

CORRECTION

Open Access



# Correction to: Multi-modal imaging of high-risk ductal carcinoma in situ of the breast using C2Am: a targeted cell death imaging agent

Zoltan Szucs<sup>1</sup>, James Joseph<sup>1,2,3</sup>, Tim J. Larkin<sup>1</sup>, Bangwen Xie<sup>1</sup>, Sarah E. Bohndiek<sup>1,2</sup>, Kevin M. Brindle<sup>1,4\*</sup> and André A. Neves<sup>1\*</sup>

**Correction to: *Breast Cancer Res* (2021) 23:25**  
<https://doi.org/10.1186/s13058-021-01404-z>

After publication of the original article [1], the authors identified two errors in Figure 6.

The correct figure is given below.

---

The original article can be found online at <https://doi.org/10.1186/s13058-021-01404-z>.

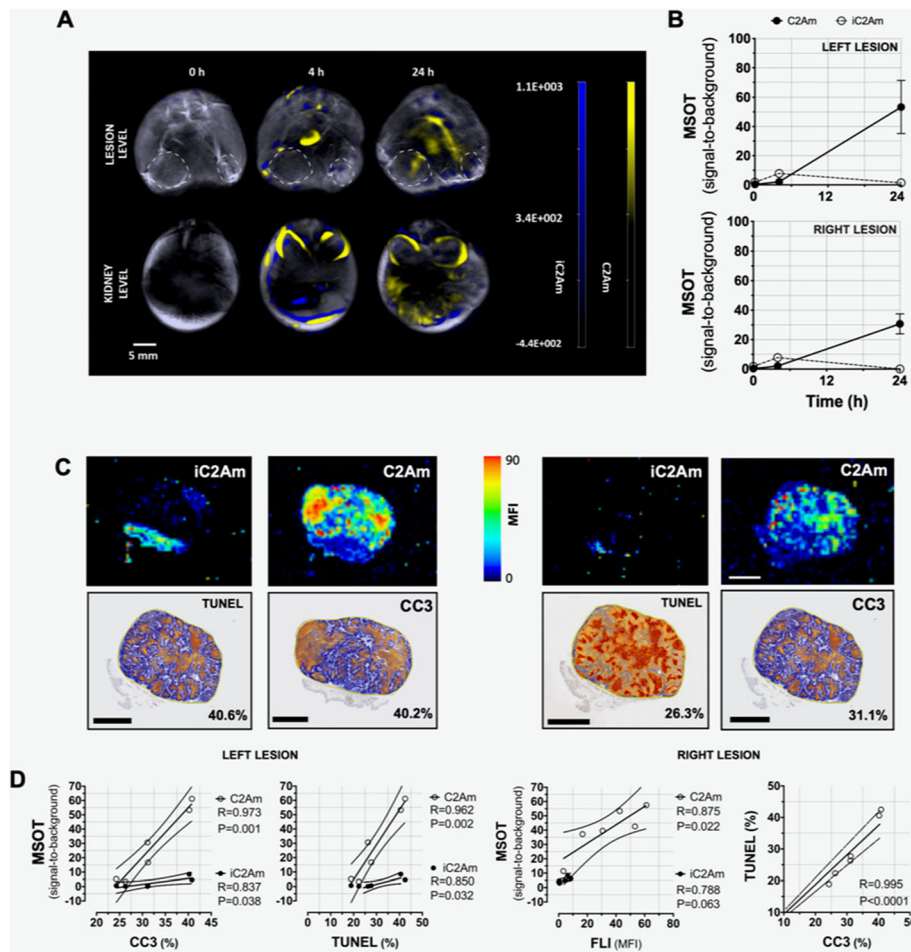
\* Correspondence: [kmb1001@cam.ac.uk](mailto:kmb1001@cam.ac.uk); [andre.neves@cruk.cam.ac.uk](mailto:andre.neves@cruk.cam.ac.uk)

<sup>1</sup>Cancer Research UK Cambridge Institute, Li Ka Shing Centre, University of Cambridge, Robinson Way, Cambridge CB2 0RE, UK

Full list of author information is available at the end of the article



© The Author(s). 2021 **Open Access** This article is licensed under a Creative Commons Attribution 4.0 International License, which permits use, sharing, adaptation, distribution and reproduction in any medium or format, as long as you give appropriate credit to the original author(s) and the source, provide a link to the Creative Commons licence, and indicate if changes were made. The images or other third party material in this article are included in the article's Creative Commons licence, unless indicated otherwise in a credit line to the material. If material is not included in the article's Creative Commons licence and your intended use is not permitted by statutory regulation or exceeds the permitted use, you will need to obtain permission directly from the copyright holder. To view a copy of this licence, visit <http://creativecommons.org/licenses/by/4.0/>. The Creative Commons Public Domain Dedication waiver (<http://creativecommons.org/publicdomain/zero/1.0/>) applies to the data made available in this article, unless otherwise stated in a credit line to the data.



The original article has been corrected.

**Author details**

<sup>1</sup>Cancer Research UK Cambridge Institute, Li Ka Shing Centre, University of Cambridge, Robinson Way, Cambridge CB2 0RE, UK. <sup>2</sup>Department of Physics, University of Cambridge, Cambridge, UK. <sup>3</sup>Present address: School of Science and Engineering, University of Dundee, Dundee, UK. <sup>4</sup>Department of Biochemistry, University of Cambridge, Cambridge, UK.

Published online: 15 March 2021

**Reference**

1. Szucs Z, et al. Multi-modal imaging of high-risk ductal carcinoma in situ of the breast using C2Am: a targeted cell death imaging agent. *Breast Cancer Res.* 2021;23:25 <https://doi.org/10.1186/s13058-021-01404-z>.