



Organophosphate pesticides and new-onset diabetes mellitus: From molecular mechanisms to a possible therapeutic perspective

Ya-Ling Chung, Yi-Chou Hou, I-Kuan Wang, Kuo-Cheng Lu, Tzung-Hai Yen

ORCID number: Ya-Ling Chung 0000-0003-3232-8839; Yi-Chou Hou 0000-0001-7662-9890; I-Kuan Wang 0000-0001-9435-5213; Kuo-Cheng Lu 0000-0002-7062-8560; Tzung-Hai Yen 0000-0002-0907-1505.

Author contributions: Chung YL and Hou YC contributed data collection and manuscript writing; Wang IK contributed data analysis; Lu KC and Yen TH contributed study design and supervision; Chung YL and Hou YC contributed equally to this work; Lu KC and Yen TH also contributed equally.

Supported by Chang Gung Memorial Hospital, Linkou, Taiwan, No. CORPG3K0191 and No. CMRPG3J1051-3.

Conflict-of-interest statement: The authors declare no conflicts of financial interest.

Open-Access: This article is an open-access article that was selected by an in-house editor and fully peer-reviewed by external reviewers. It is distributed in accordance with the Creative Commons Attribution NonCommercial (CC BY-NC 4.0) license, which permits others to distribute, remix, adapt, build upon this work non-commercially, and license their derivative works on different terms, provided the

Ya-Ling Chung, Department of Medical Laboratory, Cardinal-Tien Hospital, New Taipei City 231, Taiwan

Yi-Chou Hou, Department of Internal Medicine, Cardinal Tien Hospital, New Taipei City 231, Taiwan

Yi-Chou Hou, Graduate Institute of Clinical Medicine, College of Medicine, Taipei Medical University, Taipei 110, Taiwan

Yi-Chou Hou, Kuo-Cheng Lu, School of Medicine, Fu Jen Catholic University, New Taipei City 24205, Taiwan

I-Kuan Wang, Department of Nephrology, China Medical University Hospital, Taichung 404, Taiwan

I-Kuan Wang, College of Medicine, China Medical University, Taichung 404, Taiwan

Kuo-Cheng Lu, Division of Nephrology, Department of Medicine, Fu Jen Catholic University Hospital, New Taipei City 242, Taiwan

Kuo-Cheng Lu, Division of Nephrology, Department of Medicine, Taipei Tzu Chi Hospital, Buddhist Tzu Chi Medical Foundation, New Taipei City 231, Taiwan

Tzung-Hai Yen, Department of Nephrology, Chang Gung Memorial Hospital, Linkou 333, Taiwan

Tzung-Hai Yen, School of Traditional Chinese Medicine, College of Medicine, Chang Gung University, Taoyuan 333, Taiwan

Corresponding author: Tzung-Hai Yen, MD, PhD, Doctor, Professor, Department of Nephrology, Chang Gung Memorial Hospital, No. 199 Tung Hwa North Road, Linkou 333, Taiwan. m19570@adm.cgmh.org.tw

Abstract

Organophosphate is a commonly used pesticide in the agricultural sector. The main action of organophosphate focuses on acetylcholinesterase inhibition, and it therefore contributes to acute cholinergic crisis, intermediate syndrome and delayed neurotoxicity. From sporadic case series to epidemiologic studies, organophosphate has been linked to hyperglycemia and the occurrence of new-onset diabetes mellitus. Organophosphate-mediated direct damage to pancreatic

original work is properly cited and the use is non-commercial. See: <http://creativecommons.org/licenses/by-nc/4.0/>

Provenance and peer review:

Invited article; Externally peer reviewed

Specialty type: Endocrinology and metabolism

Country/Territory of origin: Taiwan

Peer-review report's scientific quality classification

Grade A (Excellent): 0
Grade B (Very good): B
Grade C (Good): 0
Grade D (Fair): 0
Grade E (Poor): 0

Received: February 25, 2021

Peer-review started: February 25, 2021

First decision: May 3, 2021

Revised: May 27, 2021

Accepted: September 22, 2021

Article in press: September 22, 2021

Published online: November 15, 2021

P-Reviewer: Mei XF

S-Editor: Gao CC

L-Editor: A

P-Editor: Wang LYT



beta cells, insulin resistance related to systemic inflammation and excessive hepatic gluconeogenesis and polymorphisms of the enzyme governing organophosphate elimination are all possible contributors to the development of new-onset diabetes mellitus. To date, a preventive strategy for organophosphate-mediated new-onset diabetes mellitus is still lacking. However, lowering reactive oxygen species levels may be a practical method to reduce the risk of developing hyperglycemia.

Key Words: Organophosphate; Pesticide; New-onset diabetes mellitus; Mechanism; Reactive oxygen species

©The Author(s) 2021. Published by Baishideng Publishing Group Inc. All rights reserved.

Core Tip: Organophosphate may induce acute hyperglycemia by damaging pancreatic cells and result in new-onset diabetes mellitus after chronic exposure to organophosphate compounds. Organophosphate-mediated new-onset diabetes mellitus might be mediated by a polymorphism of paraoxonase-1, which is associated with organophosphate elimination in hepatocytes. Pancreatic beta cell damage, excessive gluconeogenesis, hepatic steatosis, systemic inflammation and possibly sarcopenia all contribute to insulin resistance and therefore hyperglycemia.

Citation: Chung YL, Hou YC, Wang IK, Lu KC, Yen TH. Organophosphate pesticides and new-onset diabetes mellitus: From molecular mechanisms to a possible therapeutic perspective. *World J Diabetes* 2021; 12(11): 1818-1831

URL: <https://www.wjgnet.com/1948-9358/full/v12/i11/1818.htm>

DOI: <https://dx.doi.org/10.4239/wjd.v12.i11.1818>

INTRODUCTION

Organophosphate is a commonly used pesticide in the agricultural sector because of its bioavailability. The main action of the organophosphate focuses on acetylcholinesterase inhibition. Because of its wide use, intoxication of organophosphate has been commonly encountered by physicians. Intoxication can be divided into acute cholinergic crisis, intermediate syndrome and delayed neuropathy[1]. Among the complications induced by organophosphates, diabetes mellitus is a common yet often overlooked metabolic complication. The aim of this review is to analyze the molecular pathogenesis mechanisms of new-onset diabetes mellitus after organophosphate exposure.

ORGANOPHOSPHATE TOXICITY: ACUTE CHOLINERGIC CRISIS AND CHRONIC OXIDATIVE STRESS GENERATION

The main action of organophosphate is to inhibit acetylcholinesterase within the nervous system, and therefore, acetylcholine overactivity exists within the synapse and neuromuscular junction[2]. Neurological manifestations are the cardinal symptoms of organophosphate intoxication through the activation of muscarinic receptors and include myosis, excessive secretions, seizures, severe muscle paralysis, cardiorespiratory depression and even death in organophosphate overdose patients [3]. The hydrophobic character of organophosphate leads to its accumulation in adipose tissue, and therefore, intermediate syndrome with delayed neurologic injury might occur through the generation of oxidative stress. Gultekin *et al*[4] demonstrated that organophosphate treatment could activate lipid peroxidase and therefore generate reactive oxygen species (ROS) by exhausting glutathione and superoxide dismutase in a dose-dependent manner. Similar oxidative stress with excessive acetylcholinesterase activity has been reported in workers with chronic exposure to organophosphate[5]. Apart from neurotoxicity, accumulation within different tissues could cause different end-organ damage in the chronic phase. The mitogen-activated protein kinase

(MAPK) signaling pathway could activate associated kinases, such as extracellular responsive kinases, c-Jun N-terminal kinase (JNK) and p38 MAPK, which could worsen downstream apoptosis[6]. The main contributor to MAPK signaling from organophosphates is mediated by oxidative stress. From *in vitro* studies, the administration of organophosphate could activate the expression of quinone oxidoreductase-1, heme oxygenase 1, paraoxonase-1, catalase or superoxide dismutase in blood mesenchymal stem cells[7] or human umbilical vein endothelial cells[8]. Therefore, distant organ damage should arouse concern in chronic organophosphate-intoxicated subjects.

CLINICAL STUDIES OF NEW-ONSET DIABETES MELLITUS AFTER ORGANOPHOSPHATE EXPOSURE

Previous studies revealed that organophosphate exposure could increase the risk of new-onset diabetes mellitus (Tables 1 and 2). Moore and James[9] first noticed that acute organophosphate ingestion was associated with hyperglycemia, and hyperglycemia required insulin intervention for blood sugar control (Table 1). Serial studies also demonstrated that organophosphate-mediated acute pancreatic injury might induce hyperglycemia[10,11]. In 2008, Montgomery *et al*[12] provided epidemiologic data to link chronic exposure to organophosphate with diabetes mellitus (Table 2). Within the 5-year follow-up, the incidence of diabetes mellitus increased in organophosphate users. The study conducted by Liu *et al*[13] demonstrated that acute exposure to organophosphate led to hyperglycemia, but the effect on the development of diabetes mellitus was only marginal. In a meta-analysis study conducted by Lakshmi *et al*[14], hyperglycemia was common. A recent study by Panda *et al*[15] demonstrated that organophosphate exposure was associated with higher insulin resistance and higher plasma glycated hemoglobin levels. From the clinical study, acute organophosphate exposure was associated with hyperglycemia and then regressed after atropine treatment. From the study published by Leonel Javeres *et al* [16], red blood cell acetylcholinesterase activity decreased within the organophosphate exposure group, and the plasma concentrations of lipase/amylase and insulin increased in the organophosphate-exposed group. Such evidence demonstrated the effect of organophosphate on insulin resistance and direct damage to pancreatic cells in clinical investigations.

Clinical studies have shown that acute hyperglycemia develops in acute organophosphate-intoxicated subjects and that such hyperglycemia is associated with poor clinical patient outcomes. However, hyperglycemic status was mostly observed in animals with chronic or subchronic exposure[17,18]. Several *in vivo* studies demonstrated the acute effect of organophosphate on the variation of blood sugar. Rodrigues *et al*[19] reported variations in blood sugar after acute organophosphate exposure. For rats receiving a single intraperitoneal injection of malathion, blood glucose increased within 2 h, followed by hypoglycemia 8 h after injection[19]. In brain tissue, organophosphates can decrease the storage of glycogen within the brain by activating glycogenolytic enzymes such as glycogen phosphorylase and phosphoglucosomutase[20]. Glycolytic enzymes, such as phosphofructokinase and hexokinase, might decrease in the acute exposure of organophosphate[21]. Collectively, these mechanisms could explain the occurrence of acute hyperglycemia following organophosphate exposure.

MECHANISMS OF NEW-ONSET DIABETES MELLITUS AFTER ORGANOPHOSPHATE EXPOSURE: DYSFUNCTION OF PANCREATIC BETA CELLS

Nagaraju and Rajini[22] reported that rats receiving chronic organophosphate had higher insulin secretion from pancreatic islet cells and associated pancreatic hypertrophy. Insulin plays an important role in activating glucose transporter 9-mediated glucose transport into cells. Therefore, the regulation of insulin secretion is important in mediating the plasma concentration of glucose. Acetylcholinesterase lies within the pancreas either within acinar cells or insulin-secreting beta cells[23,24]. In insulin-secreting beta cells, acetylcholine binds to the muscarinic receptors of beta cells and then increases the cytosolic calcium concentration and enhances the efficiency of calcium-mediated exocytosis, which activates insulin-secreting activity[24]. Acetylcholinesterase also occurred within the alpha cells of the pancreas. Alpha cells

Table 1 Published human studies on the association between acute organophosphate exposure and the development of new-onset diabetes mellitus

Ref.	Area	Pesticide	Exposure	Sample size	Association
Moore and James[9], 1980	Australia	Coumaphos	Acute	1	Hyperglycemia
Hui[10], 1983	Hong Kong	Organophosphate	Acute	2	Hyperglycemia
Weizman and Sofer [11], 1992	Israel	Organophosphate and carbamate	Acute	17	Hyperglycemia in 29.4% of patients
Yurumez <i>et al</i> [98], 2007	Turkey	Organophosphate	Acute	220	Hyperglycemia in 67.7% of patients
Liu <i>et al</i> [13], 2014	Taiwan	Organophosphate	Acute	118	Hyperglycemia after poisoning was not associated with higher mortality
Moon <i>et al</i> [99], 2016	South Korea	Organophosphate	Acute	184	Hyperglycemia after poisoning was associated with higher mortality

Table 2 Published human studies on the association between chronic organophosphate exposure and the development of new-onset diabetes mellitus

Ref.	Area	Pesticide	Exposure	Sample size	Association
Montgomery <i>et al</i> [12], 2008	United States	Organophosphate and organochlorine	Chronic	33457	Positive association with diabetes
Raafat <i>et al</i> [100], 2012	Egypt	Malathion	Chronic	98	Positive associations among blood malathion concentration, waist circumference and insulin resistance
Velmurugan <i>et al</i> [30], 2017	India	Organophosphate	Chronic	3080	Positive association between blood organophosphate residues and glycated hemoglobin levels
Velmurugan <i>et al</i> [90], 2020	India	Organophosphate and arsenic	Chronic	865	Positive associations of organophosphate and arsenic with diabetes, prediabetes and atherosclerosis

stimulate insulin secretion in a paracrine manner within the pancreas[25]. Bendayan and Gisiger[23] also reported that acetylcholinesterase existed within acinar cells. Acinar cells are commonly regarded as governing lipase, but insulin secretion ability has been noted in several human studies beyond alpha and beta islet cells[26]. Case series studies showed that organophosphate overdose could induce pancreatitis and elevation of serum amylase[27]. Such clinical studies have provided evidence of organophosphate-mediated pancreatic damage. In addition, the acetylcholinergic receptor also governs the viability of pancreatic cells. The study conducted by Pfitzinger *et al*[28] demonstrated that cholinergic activation slowed the progression of pancreatic cancer. On the other hand, Zhang *et al*[29] presented evidence in a type I diabetes mellitus animal model mediated by streptozotocin that an acetylcholinesterase inhibitor protected pancreatic beta cells against apoptosis. Therefore, organophosphates might disrupt insulin secretion directly by dysregulating acetylcholinesterase activity (Figure 1).

MECHANISMS OF NEW-ONSET DIABETES MELLITUS AFTER ORGANO-PHOSPHATE EXPOSURE: DYSFUNCTION OF GLUCONEOGENESIS

Organophosphate-mediated gluconeogenesis by disrupted lipolysis

The pathogenesis of diabetes mellitus involves impaired regulation of hepatic gluconeogenesis. Hypersensitive glucose production in response to gluconeogenic stimuli poses organophosphate exposure as a risk factor for prediabetes[30,31]. As organophosphates are ingested *via* the intestine, the conversion of organophosphates by cytochrome 450 enhances cholinergic inhibition up to 70%[32]. As organophosphate accumulates within hepatocytes, the activation of adenylyl cyclase produces excessive cyclic adenosine monophosphate[31], which increases hepatic glucose production and

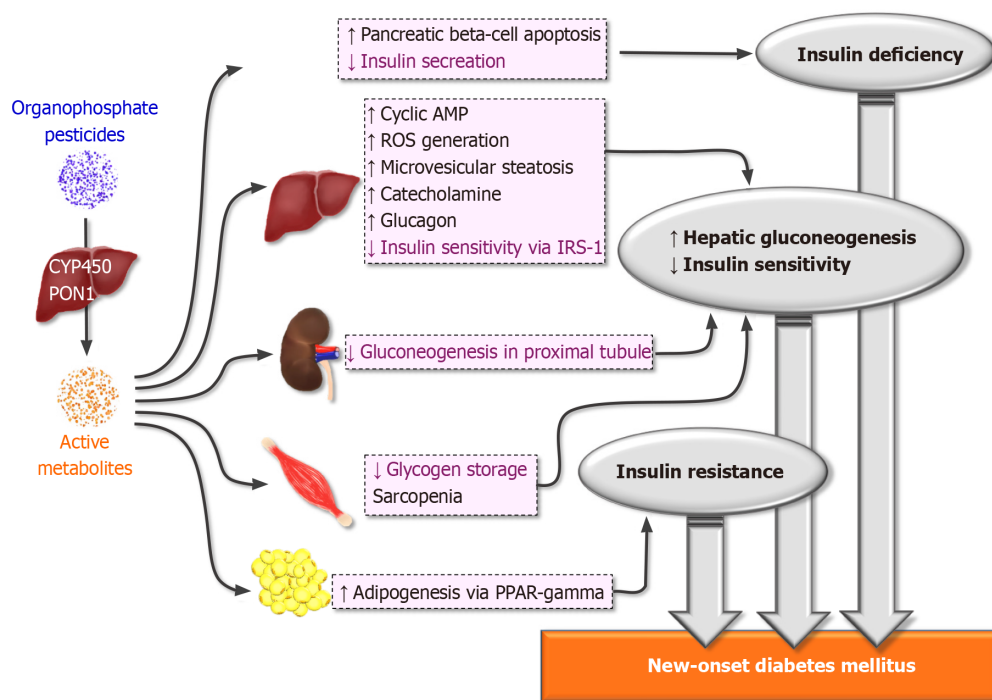


Figure 1 Postulated molecular mechanisms of new-onset diabetes mellitus after organophosphate pesticide exposure. Organophosphate pesticides are metabolized in the liver to toxic derivatives via cytochrome P450 via a first-pass effect. Paroxonase isoform 1 serves as the enzyme handling hydroxylation and cleavage of the toxic form. The active metabolite might induce new-onset diabetes mellitus via pancreatic beta cell damage and disturb the homeostasis of gluconeogenesis and insulin sensitivity. Organophosphates could directly induce apoptosis of pancreatic beta cells by activating nuclear factor-kappa beta, and therefore, insulin secretion may be hampered. Beyond pancreatic cells, gluconeogenesis within the liver could be activated by reactive oxidative species generation and inflammation induced by microvesicular steatosis, enhanced cyclic adenosine monophosphate generation, excessive catecholamine and abated insulin sensitivity of hepatocytes via insulin receptor substrate-1. Distal organ damage by organophosphates may also disturb the homeostasis of gluconeogenesis. In organophosphate-related acute kidney injury, gluconeogenesis within the proximal tubules is disturbed. Decreased proximal gluconeogenesis exacerbates excessive hepatic gluconeogenesis. In skeletal muscle, sarcopenia mediated by intermediate syndrome might reduce glycogen storage within skeletal muscle, which may induce hyperglycemia. Organophosphates also deposit within adipose tissue and therefore exacerbate adipogenesis by activating peroxisome proliferator-activated receptor-gamma. Excessive adipose tissue might enhance insulin resistance and further hasten the development of new-onset diabetes mellitus. CYP450: Cytochrome P450; PON1: Paroxonase isoform 1; ROS: Reactive oxidative species; AMP: Adenosine monophosphate; IRS-1: Insulin receptor substrate-1; PPAR: Peroxisome proliferator-activated receptor.

therefore increases body weight along with adipose tissue[33]. In a study conducted by Velmurugan *et al*[30], acetic acid increased hepatic glucose-6 phosphate and citric acid production after inducing inflammation. Apart from activation of cyclic adenosine monophosphate, the organophosphate itself also increases oxidative stress within hepatocytes by exhausting enzymes that reverse oxidative stress[34], and such oxidative stress may disrupt membranous lipids by activating lipid peroxidation[35]. Hepatic injury also occurs in organophosphate intoxication, and therefore, sequential sinusoidal dilatation and microvesicular steatosis impair glycogen synthesis[36]. Insulin mediates the suppression of adipose lipolysis physiologically and therefore downregulates gluconeogenesis[37]. Ince *et al*[38] demonstrated that lipid metabolism was disturbed in organophosphate-treated mice, with excessive end-products of lipid peroxidation. As excessive acetylcholinesterase leads to subjects having chronic hypercholinergic status, dietary habits are altered. From the study by Slotkin *et al*[39], neonatal rats exposed to organophosphate had hyperactive acetylcholine function within the neuron body, and such activity could be ameliorated only by a high-fat diet.

Organophosphate-mediated gluconeogenesis mediated by impaired glycogen storage

Under hyperglycemic conditions, glycogen storage could lower circulating glucose and enhance the anabolism process rather than catabolism. Glycogen phosphorylase, which counteracts glycogen storage, is activated by organophosphates[40]. Dichlorvos, as an example, increased the messenger ribonucleic acid expression of glycogen phosphorylase and decreased glycogen storage[41]. However, the different organophosphates had diverse actions on glycogen-storing proteins. Malathion, while activating the gluconeogenesis process, decreased glycogen phosphorylase but resulted in compensatory hepatomegaly[42,43]. The modulation of organophosphate

on glycogen storage could contribute to the gluconeogenesis process.

Organophosphate-mediated gluconeogenesis mediated by altered hormone regulation

Glucagon and catecholamine are the major hormones regulating gluconeogenesis[37]. Glucagon and catecholamine could directly enhance hepatic gluconeogenesis by activating cyclic adenosine monophosphate *via* phosphorylation of protein kinase A activity[44] and bifunctional enzyme 6-phosphofructo-2-kinase/fructose-2,6-bisphosphatase 2 (PFK2/FBPase-2)[45]. Glucagon activity also decreased glycogen storage by coupling with the inhibitory G protein[46]. Catecholamine, on the other hand, also activates gluconeogenesis *via* cyclic adenosine monophosphate activity[47]. Stress-associated catecholamine release can increase the gluconeogenesis process and therefore insulin resistance, and organophosphate itself activates catecholamine release after inhibiting acetylcholinesterase activity[42]. Organophosphate could activate catecholamine release within neurons, and unbalanced catecholamine release might prolong the gluconeogenesis process.

MECHANISMS OF NEW-ONSET DIABETES MELLITUS AFTER ORGANO-PHOSPHATE EXPOSURE: INSULIN RESISTANCE MEDIATED BY INFLAMMATION OR DYNAMIC CHANGES IN THE MICROBIOTA

Insulin resistance, excessive gluconeogenesis and insufficient glucose uptake in the presence of insulin place subjects as hyperglycemia status and therefore invoke sequential adipose tissue formation. Physiologically, insulin activates the insulin receptor by tyrosine phosphorylation of insulin receptor substrate-1[48], and serine phosphorylation inhibits the insulin receptor and offsets insulin activity[49]. Insulin resistance is common in chronic organophosphate exposure subjects. From the *in vivo* study conducted by Nagaraju and Rajini[22], insulin hypertrophy and the increased secretion of insulin were accompanied by circulating insulin-like growth factor 1, free fatty acids, corticosterone, and paraoxonase activity. As organophosphate increases excessive cholinergic activity, insulin resistance is associated with systemic inflammation. From the study reported by Liang *et al*[50], organophosphates could induce an increase in body weight in experimental mice treated with a high-fat diet. In organophosphate mice treated with a high-fat diet, systemic inflammation mediated by lipopolysaccharide might occur. Systemic inflammation mediated by the intestinal barrier might activate systemic inflammation. In addition, the lipid peroxidation end product malondialdehyde (MDA) increased in organophosphate-treated rats, and the oxidative end product was associated with a higher level of inflammation[38].

Chronic exposure to organophosphate could directly enhance systemic inflammation. In a study by Ince *et al*[38], organophosphate-treated rats had higher proinflammatory cytokines, such as interferon gamma, interleukin 1 beta, tumor necrosis factor alpha, and nuclear factor kappa-light-chain-enhancer of activated B cells (NF- κ B), than control rats. Hepatocytes are the major cells confronting proinflammatory cytokines. As NF- κ B is activated by inflammatory cytokines, I κ B kinase- β might be activated and therefore hamper the downstream action of insulin[51]. In addition to I κ B kinase- β , JNK signaling was also activated in organophosphate intoxication. When endoplasmic reticulum stress is enhanced after organophosphate-mediated excessive oxidative stress, JNK is activated under conditions of proinflammatory cytokine release *via* NF- κ B[52]. Based on the evidence above, organophosphates might induce inflammation and produce proinflammatory cytokines mediating insulin resistance.

MECHANISMS OF NEW-ONSET DIABETES MELLITUS AFTER ORGANO-PHOSPHATE EXPOSURE: INSULIN RESISTANCE MEDIATED BY ROS

Excessive oxidative stress is associated with insulin resistance. Polyunsaturated fatty acids are the main source of oxidative stress. Low concentrations of ROS mediate the proliferative signals of insulin by phosphatidylinositol 3-kinase and protein kinase B [53]. In acute or chronic organophosphate intoxication, ROS regeneration is common as the exhaustion of endogenous antioxidant species occurs. The MDA level and superoxide dismutase increased in organophosphate intoxication, and reduced

glutathione was depleted[5]. Possamai *et al*[54] showed that both acute and chronic exposure to malathion could generate ROS within the kidney and brain acutely and liver and skeletal muscle chronically. The study performed by Aly *et al*[55] also demonstrated that the liver serves as the reservoir in chronic organophosphate exposure with the generation of ROS. To enhance the elimination of ROS, adenosine triphosphate is generated from the activated gluconeogenesis process within the liver [56]. In addition, ROS also directly disturb insulin receptor signaling. Morino *et al*[57] demonstrated that ROS activated serine residues on insulin receptor substrate 1 and therefore inhibited glucose transporter type 4. From the aspect above, the ROS generated by organophosphate could disturb insulin signaling and therefore worsen insulin resistance.

MECHANISMS OF NEW-ONSET DIABETES MELLITUS AFTER ORGANO-PHOSPHATE EXPOSURE: DYSFUNCTION OF PEROXISOME PROLIFERATOR-ACTIVATED RECEPTOR GAMMA

Peroxisome proliferator-activated receptor (PPAR) is a transcriptional receptor within the nucleus, and its main action governs the proliferation of peroxisomes within the nucleus. PPARs regulate the metabolism of carbohydrates, lipids and proteins along with insulin sensitivity. The role of organophosphates in lipid metabolism has been demonstrated. Since organophosphate is a highly fat-soluble component, accumulation within adipose tissue could prolong its toxicity and generate oxidative stress within adipose tissue[58]. Smith *et al*[59] demonstrated that diazinon induces adipogenesis within preadipocytes by activating PPAR gamma receptors along with the transcription factor CCAAT-enhancer-binding protein α (C/EBP α).

MECHANISMS OF NEW-ONSET DIABETES MELLITUS AFTER ORGANO-PHOSPHATE EXPOSURE: GLUCAGON-LIKE PEPTIDE-1 RECEPTOR AGONIST AND DIPEPTIDYL PEPTIDASE-4 INHIBITOR

Incretin secreted from the intestine is important for insulin secretion. As carbohydrates enter the duodenum, the K cells within the duodenum secrete glucose-dependent insulinotropic polypeptides into the brain *via* the vagus nerve. Activated vagal tone enhances acetylcholine release to M cells within the distal ileum and therefore increases glucagon-like peptide 1 (GLP-1). GLP-1 could therefore increase insulin release and lower blood glucose. Organophosphates might increase the acetylcholine concentration within the neural cleft and therefore downregulate muscarinic receptors. Downregulated muscarinic receptors attenuate GLP-1 release and therefore further insulin release[60]. From the study by Rathis *et al*[61], the GLP-1 response was attenuated in subjects with acute exposure to organophosphate with atropine treatment. Chronic exposure to organophosphate might downregulate the incretin-mediated glucose-lowering effect.

MECHANISMS OF NEW-ONSET DIABETES MELLITUS AFTER ORGANO-PHOSPHATE EXPOSURE: RENAL HANDLING OF GLUCOSE

From clinical observations, victims of organophosphate exposure had transient glycosuria, which was relevant to euglycemia[62]. Based on the evidence, acute tubular necrosis might be noticed in organophosphate intoxication subjects. From the study reported by Kaya *et al*[63], acute organophosphate intoxication could mediate the vacuolization of tubular epithelial cells and tubular structure approaching atrophy within the proximal tubules. The oxidative stress mediated by organophosphates worsened proximal tubular damage in an *in vitro* study performed by Poovala *et al* [64]. The activation of the MAPK signaling pathway within nephron precursor cells demonstrated direct nephrotoxicity after activating JNK and caspase-3[65]. Proximal tubular cells primarily serve as gluconeogenic cells through the utilization of adenosine triphosphate, and therefore, damaged proximal tubules might impair endogenous gluconeogenesis[66] and are associated with higher mortality and the need for dialysis in critically ill patients[67,68], including organophosphate in-

toxication subjects[69]. Since acute kidney injury and stress-mediated inflammation might contribute to insulin resistance and new-onset diabetes mellitus[70], preserving kidney function during acute kidney injury status through organophosphate intoxication should be important in managing these patients to hamper the development of diabetes mellitus.

MECHANISMS OF NEW-ONSET DIABETES MELLITUS AFTER ORGANO-PHOSPHATE EXPOSURE: INTERMEDIATE SYNDROME

As described in the previous sections, the major clinical manifestation of cholinergic crisis was the overactivation of the parasympathetic tone with tachycardia, myosis or neurologic complications such as seizures. From a previous study by Liu *et al*[13], acute organophosphate intoxication was minimally predictive of new-onset diabetes mellitus. Intermediate syndrome by organophosphate could induce myopathy, especially in the proximal skeletal muscle and respiratory muscle[71]. Although the direct mechanism is still unknown, necrosis of skeletal muscle and associated myopathy might be an entity in chronic organophosphate intoxication subjects[72]. In addition, organophosphate-mediated peripheral motor neuropathy is accompanied by weakness after acute intoxication[73]. From a review of the literature, a correlation between organophosphate intoxication and sarcopenia was rare. However, in patients with diabetic neuropathy, sarcopenia was more obvious than in those without neuropathy[74]. Persistent muscle weakness in intermediate syndrome might lead to sarcopenic status in organophosphate patients, and sarcopenia alone might enhance the risk of developing diabetes mellitus. In the study by Hong *et al*[75], skeletal muscle mass was negatively associated with the development of type 2 diabetes mellitus. Since skeletal muscle serves as the pool of glucose mediated by insulin, the decreased skeletal mass would reduce glucose disposal and therefore worsen the inflammation of skeletal muscle and insulin resistance[76].

POSSIBLE THERAPEUTIC PERSPECTIVE IN PREVENTING ORGANO-PHOSPHATE-MEDIATED NEW-ONSET DIABETES MELLITUS

In acute organophosphate intoxication, the application of atropine is the mandatory therapeutic strategy in treating cholinergic crises. The association between atropine and insulin secretion has been discussed. In 1978, cholinergic blockade by atropine was known to decrease insulin secretion mediated by gastric inhibitory polypeptides and gastrin release[77,78]. The action of atropine on gastric inhibitory polypeptides lowered postprandial insulin secretion. From the study published by Schafer *et al*[79] and Afonso *et al*[80], atropine inhibited the release of hepatic insulin-sensitizing substances, which therefore lessened insulin sensitivity during feeding. The parasympathetic nerves directly stimulate postprandial insulin secretion; therefore, atropine might play an inhibitory role in blood sugar control. However, a study by Svensson *et al*[81] showed that atropine improved insulin sensitivity in both lean and obese subjects. In the atropine-treated group, glucose uptake was higher than that in the subjects treated with saline alone. In summary, parasympathetic blockade might directly decrease insulin secretion mediated by gastric inhibitory polypeptides and delay intestinal emptying under cellular dehydration conditions[82]. However, atropine might improve insulin sensitivity based on the clinical trial mediated by Svensson *et al*[81]. Since atropine might only be given in the acute intoxication of organophosphate conditions, the acute adverse effect might not be potentiated.

ROLE OF ROS GENERATION IN ORGANO-PHOSPHATE-MEDIATED NEW-ONSET DIABETES MELLITUS

From the evidence mentioned above, the oxidative stress generated by organophosphate increased gluconeogenesis and decreased insulin sensitivity. Therefore, interventions to lessen ROS generation have been proposed to prevent the development of organophosphate-mediated diabetes mellitus. N-Acetylcysteine is a widely used scavenger for ROS due to its regeneration of glutathione. From clinical trials, N-acetylcysteine has been applied to treat acute organophosphate intoxication.

From the clinical trial reported by El-Ebiary *et al*[83], n-acetylcysteine could achieve less atropine use and shorter hospitalization stays in acute organophosphate intoxication subjects. Falach-Malik *et al*[84] demonstrated that in diabetes-prone mice treated with a high-fat diet, n-acetylcysteine alleviated glucose intolerance by lessening hepatic steatosis. Charron *et al*[85] also demonstrated that in high-fat diet-fed maternal mice, n-acetylcysteine supplementation in the maternal stage decreased diabetes mellitus development in offspring. A similar effect was also demonstrated in a type 1 diabetes mellitus animal model under insulin deficiency[86]. N-Acetylcysteine also lessened organophosphate-mediated toxicity *in vivo*. A report from Yurumez *et al* [87] demonstrated that N-acetylcysteine could rescue antioxidative glutathione, nitrite and nitrate and decrease MDA generation in organophosphate-treated mice. The study conducted by Bayir *et al*[88] demonstrated that in organophosphate-poisoned mice, n-acetylcysteine alone could restore the cholinesterase concentration within erythrocytes, and the liver MDA level was lessened in n-acetylcysteine-treated mice rather than pralidoxime-atropine-treated mice or sham mice. From the aspect of decreasing organophosphate-mediated oxidative stress and the sequential development of diabetes mellitus, a therapeutic strategy for lowering ROS should be considered.

FUTURE PERSPECTIVES ON THE PREVENTION OF ORGANO-PHOSPHATE-MEDIATED NEW-ONSET DIABETES MELLITUS: RISK FACTOR STRATIFICATION

Since the development of diabetes mellitus is common in organophosphate-exposed subjects, risk stratification should be emphasized. The specific brand of organophosphate pesticide could influence the development of diabetes mellitus. Juntarawijit and Juntarawijit[89] noticed that endosulfan, mevinphos, carbamate and one fungicide (benlates) contributed to the development of diabetes mellitus in the Thai population. Apart from the specific insecticides, the environmental heavy metal content might play a synergistic role in the development of diabetes mellitus. From the study by Velmurugan *et al*[90], arsenics could synergize with organophosphate-mediated diabetes mellitus. At the same time, genetic polymorphisms should play a role in the development of organophosphate-induced diabetes mellitus. As the previous section mentioned, organophosphates could be metabolized by hepatic cytochrome p450, and metabolites might generate genotoxicity if the polymorphism existed within the subjects[91]. The first pass effect of cytochrome p450 generates toxic oxon organophosphate, which would be further oxidatively cleaved by cytochrome or hydroxylated by paraoxonase-1[92,93]. From the study by Al-Hakeem *et al*[94], the polymorphism in paraoxonase-1 with glutamine 192 to arginine made the subject vulnerable to gestational diabetes mellitus. The evidence shows a link between the polymorphism and organophosphate-mediated diabetes mellitus. In addition to diabetes mellitus development, lipid metabolism might be altered by paraoxonase-1 polymorphisms. The study conducted by Onat and *et al*[95] Leonel Javeres *et al*[96] demonstrated that the paraoxonase-1 polymorphism with the rs662 genotype was associated with ApoA1 and ApoB, which also reflected dyslipidemia in metabolic syndrome. Finally, personal protective equipment plays an important role in moderating the organophosphate metabolites associated with insulin resistance. Seesen conducted a study analyzing urinary organophosphate metabolites in pesticide sprayers and nonfarm workers[97]. In this study, the pesticide sprayer had a higher incidence of insulin resistance, and the only different organophosphate metabolite was diethylthiophosphate. No correlation was identified between diethylthiophosphate and the severity of insulin resistance. However, personal protection equipment lowered organophosphate metabolite generation. Personal protective equipment might play a preventive role in alleviating insulin resistance in organophosphate intoxication subjects.

CONCLUSION

Organophosphate pesticides have been linked to both acute and chronic intoxication. In acute intoxication, organophosphate-mediated cholinergic crisis might sequentially be followed by intermediate syndrome. Intermediate syndrome might hamper chronic muscle wasting and sarcopenia, therefore increasing the risk of diabetes mellitus. With chronic exposure to organophosphates, diabetes mellitus might develop by direct

damage to the pancreas and insulin resistance mediated by lipolysis, oxidative stress and chronic inflammation. Distal organ damage, such as acute kidney injury, might worsen possible organophosphate-mediated diabetes mellitus. The standard therapeutic strategy for cholinergic crisis may play a controversial role in managing organophosphate-mediated diabetes mellitus. However, reducing ROS might be a possible therapeutic strategy. In addition, elucidating the possible genetic polymorphisms to predict the development of diabetes mellitus with organophosphate intoxication might be essential.

REFERENCES

- 1 **Liu HF**, Ku CH, Chang SS, Chang CM, Wang IK, Yang HY, Weng CH, Huang WH, Hsu CW, Yen TH. Outcome of patients with chlorpyrifos intoxication. *Hum Exp Toxicol* 2020; **39**: 1291-1300 [PMID: [32336155](#) DOI: [10.1177/0960327120920911](#)]
- 2 **Pearson JN**, Patel M. The role of oxidative stress in organophosphate and nerve agent toxicity. *Ann N Y Acad Sci* 2016; **1378**: 17-24 [PMID: [27371936](#) DOI: [10.1111/nyas.13115](#)]
- 3 **Brown MA**, Brix KA. Review of health consequences from high-, intermediate- and low-level exposure to organophosphorus nerve agents. *J Appl Toxicol* 1998; **18**: 393-408 [PMID: [9840747](#) DOI: [10.1002/\(sici\)1099-1263\(199811/12\)18:6<393::aid-jat528>3.0.co;2-0](#)]
- 4 **Gultekin F**, Ozturk M, Akdogan M. The effect of organophosphate insecticide chlorpyrifos-ethyl on lipid peroxidation and antioxidant enzymes (in vitro). *Arch Toxicol* 2000; **74**: 533-538 [PMID: [11131033](#) DOI: [10.1007/s002040000167](#)]
- 5 **Ranjbar A**, Pasalar P, Abdollahi M. Induction of oxidative stress and acetylcholinesterase inhibition in organophosphorous pesticide manufacturing workers. *Hum Exp Toxicol* 2002; **21**: 179-182 [PMID: [12099619](#) DOI: [10.1191/0960327102ht238oa](#)]
- 6 **Aggeli IK**, Gaitanaki C, Lazou A, Beis I. Activation of multiple MAPK pathways (ERKs, JNKs, p38-MAPK) by diverse stimuli in the amphibian heart. *Mol Cell Biochem* 2001; **221**: 63-69 [PMID: [11506188](#) DOI: [10.1023/A:1010933013533](#)]
- 7 **Jahan S**, Kumar D, Singh S, Kumar V, Srivastava A, Pandey A, Rajpurohit CS, Khanna VK, Pant AB. Resveratrol Prevents the Cellular Damages Induced by Monocrotophos via PI3K Signaling Pathway in Human Cord Blood Mesenchymal Stem Cells. *Mol Neurobiol* 2018; **55**: 8278-8292 [PMID: [29526017](#) DOI: [10.1007/s12035-018-0986-z](#)]
- 8 **Ellis RJ**, Small DM, Ng KL, Vesey DA, Vitetta L, Francis RS, Gobe GC, Morais C. Indoxyl Sulfate Induces Apoptosis and Hypertrophy in Human Kidney Proximal Tubular Cells. *Toxicol Pathol* 2018; **46**: 449-459 [PMID: [29683083](#) DOI: [10.1177/0192623318768171](#)]
- 9 **Moore PG**, James OF. Acute pancreatitis induced by acute organophosphate poisoning. *Postgrad Med J* 1981; **57**: 660-662 [PMID: [7335569](#) DOI: [10.1136/pgmj.57.672.660](#)]
- 10 **Hui KS**. Metabolic disturbances in organophosphate insecticide poisoning. *Arch Pathol Lab Med* 1983; **107**: 154 [PMID: [6687534](#)]
- 11 **Weizman Z**, Sofer S. Acute pancreatitis in children with anticholinesterase insecticide intoxication. *Pediatrics* 1992; **90**: 204-206 [PMID: [1379357](#)]
- 12 **Montgomery MP**, Kamel F, Saldana TM, Alavanja MC, Sandler DP. Incident diabetes and pesticide exposure among licensed pesticide applicators: Agricultural Health Study, 1993-2003. *Am J Epidemiol* 2008; **167**: 1235-1246 [PMID: [18343878](#) DOI: [10.1093/aje/kwn028](#)]
- 13 **Liu SH**, Lin JL, Shen HL, Chang CC, Huang WH, Weng CH, Hsu CW, Wang IK, Liang CC, Yen TH. Acute large-dose exposure to organophosphates in patients with and without diabetes mellitus: analysis of mortality rate and new-onset diabetes mellitus. *Environ Health* 2014; **13**: 11 [PMID: [24597539](#) DOI: [10.1186/1476-069X-13-11](#)]
- 14 **Lakshmi J**, Mukhopadhyay K, Ramaswamy P, Mahadevan S. A Systematic Review on Organophosphate Pesticide and Type II Diabetes Mellitus. *Curr Diabetes Rev* 2020; **16**: 586-597 [PMID: [31544698](#) DOI: [10.2174/1573399815666190712192844](#)]
- 15 **Panda S**, Nanda R, Mangaraj M, Rathod PK, Mishra PK. Glycemic Status in Organophosphorus Poisoning. *J Nepal Health Res Counc* 2015; **13**: 214-219 [PMID: [27005715](#)]
- 16 **Leonel Javeres MN**, Raza S, Judith N, Anwar F, Habib R, Batool S, Nurulain SM. Mixture of Organophosphates Chronic Exposure and Pancreatic Dysregulations in Two Different Population Samples. *Front Public Health* 2020; **8**: 534902 [PMID: [33194944](#) DOI: [10.3389/fpubh.2020.534902](#)]
- 17 **Deotare ST**, Chakrabarti CH. Effect of acephate (orthene) on tissue levels of thiamine, pyruvic acid, lactic acid, glycogen and blood sugar. *Indian J Physiol Pharmacol* 1981; **25**: 259-264 [PMID: [7298151](#)]
- 18 **Abdollahi M**, Donyavi M, Pournourmohammadi S, Saadat M. Hyperglycemia associated with increased hepatic glycogen phosphorylase and phosphoenolpyruvate carboxykinase in rats following subchronic exposure to malathion. *Comp Biochem Physiol C Toxicol Pharmacol* 2004; **137**: 343-347 [PMID: [15228952](#) DOI: [10.1016/j.cca.2004.03.009](#)]
- 19 **Rodrigues MA**, Puga FR, Chenker E, Mazanti MT. Short-term effect of malathion on rats' blood glucose and on glucose utilization by mammalian cells in vitro. *Ecotoxicol Environ Saf* 1986; **12**:

- 110-113 [PMID: 3792264 DOI: 10.1016/0147-6513(86)90046-1]
- 20 **Husain K**, Ansari RA. Effectiveness of certain drugs in acute malathion intoxication in rats. *Ecotoxicol Environ Saf* 1990; **19**: 271-275 [PMID: 2364909 DOI: 10.1016/0147-6513(90)90028-4]
- 21 **Sarin S**, Gill KD. Dichlorvos induced alterations in glucose homeostasis: possible implications on the state of neuronal function in rats. *Mol Cell Biochem* 1999; **199**: 87-92 [PMID: 10544956 DOI: 10.1023/A:1006930511459]
- 22 **Nagaraju R**, Rajini PS. Adaptive response of rat pancreatic β -cells to insulin resistance induced by monocrotophos: Biochemical evidence. *Pestic Biochem Physiol* 2016; **134**: 39-48 [PMID: 27914538 DOI: 10.1016/j.pestbp.2016.04.009]
- 23 **Bendayan M**, Gisiger V. Demonstration of acetylcholinesterase molecular forms in a continuous tubular lysosomal system of rat pancreatic acinar cells. *J Histochem Cytochem* 2001; **49**: 29-40 [PMID: 11118476 DOI: 10.1177/002215540104900104]
- 24 **Gilon P**, Henquin JC. Mechanisms and physiological significance of the cholinergic control of pancreatic beta-cell function. *Endocr Rev* 2001; **22**: 565-604 [PMID: 11588141 DOI: 10.1210/edrv.22.5.0440]
- 25 **Rodriguez-Diaz R**, Dando R, Jacques-Silva MC, Fachado A, Molina J, Abdulreda MH, Ricordi C, Roper SD, Berggren PO, Caicedo A. Alpha cells secrete acetylcholine as a non-neuronal paracrine signal priming beta cell function in humans. *Nat Med* 2011; **17**: 888-892 [PMID: 21685896 DOI: 10.1038/nm.2371]
- 26 **Yu L**, Luo JX, Wei JL, Mu XJ, Ren XX, Yang Z, Peng YT, Zhao HL. Insulin-producing acinar cells in adult human pancreas. *Pancreas* 2014; **43**: 592-596 [PMID: 24713842 DOI: 10.1097/mpa.000000000000079]
- 27 **Yoshida S**, Okada H, Nakano S, Shirai K, Yuhara T, Kojima H, Doi T, Kato H, Suzuki K, Morishita K, Murakami E, Ushikoshi H, Toyoda I, Ogura S. Much caution does no harm! *J Intensive Care* 2015; **3**: 21 [PMID: 25949814 DOI: 10.1186/s40560-015-0088-1]
- 28 **Pfitzinger PL**, Fangmann L, Wang K, Demir E, Gürlevik E, Fleischmann-Mundt B, Brooks J, D'Haese JG, Teller S, Hecker A, Jesinghaus M, Jäger C, Ren L, Istvanffy R, Kühnel F, Friess H, Ceyhan GO, Demir IE. Indirect cholinergic activation slows down pancreatic cancer growth and tumor-associated inflammation. *J Exp Clin Cancer Res* 2020; **39**: 289 [PMID: 33357230 DOI: 10.1186/s13046-020-01796-4]
- 29 **Zhang B**, Yang L, Yu L, Lin B, Hou Y, Wu J, Huang Q, Han Y, Guo L, Ouyang Q, Zhang B, Lu L, Zhang X. Acetylcholinesterase is associated with apoptosis in β cells and contributes to insulin-dependent diabetes mellitus pathogenesis. *Acta Biochim Biophys Sin (Shanghai)* 2012; **44**: 207-216 [PMID: 22236578 DOI: 10.1093/abbs/gmr121]
- 30 **Velmurugan G**, Ramprasath T, Swaminathan K, Mithieux G, Rajendhran J, Dhivakar M, Parthasarathy A, Babu DD, Thumburaj LJ, Freddy AJ, Dinakaran V, Puhari SS, Rekha B, Christy YJ, Anusha S, Divya G, Suganya K, Meganathan B, Kalyanaraman N, Vasudevan V, Kamaraj R, Karthik M, Jeyakumar B, Abhishek A, Paul E, Pushpanathan M, Rajmohan RK, Velayutham K, Lyon AR, Ramasamy S. Gut microbial degradation of organophosphate insecticides-induces glucose intolerance via gluconeogenesis. *Genome Biol* 2017; **18**: 8 [PMID: 28115022 DOI: 10.1186/s13059-016-1134-6]
- 31 **Slotkin TA**. Does early-life exposure to organophosphate insecticides lead to prediabetes and obesity? *Reprod Toxicol* 2011; **31**: 297-301 [PMID: 20850519 DOI: 10.1016/j.reprotox.2010.07.012]
- 32 **Casida JE**, Quistad GB. Organophosphate toxicology: safety aspects of nonacetylcholinesterase secondary targets. *Chem Res Toxicol* 2004; **17**: 983-998 [PMID: 15310231 DOI: 10.1021/tx0499259]
- 33 **Meggs WJ**, Brewer KL. Weight gain associated with chronic exposure to chlorpyrifos in rats. *J Med Toxicol* 2007; **3**: 89-93 [PMID: 18072142 DOI: 10.1007/bf03160916]
- 34 **Sharma Y**, Bashir S, Irshad M, Gupta SD, Dogra TD. Effects of acute dimethoate administration on antioxidant status of liver and brain of experimental rats. *Toxicology* 2005; **206**: 49-57 [PMID: 15590108 DOI: 10.1016/j.tox.2004.06.062]
- 35 **Altuntas I**, Delibas N, Demirci M, Kilinc I, Tamer N. The effects of methidathion on lipid peroxidation and some liver enzymes: role of vitamins E and C. *Arch Toxicol* 2002; **76**: 470-473 [PMID: 12185416 DOI: 10.1007/s00204-002-0359-1]
- 36 **Sutcu R**, Altuntas I, Yildirim B, Karahan N, Demirin H, Delibas N. The effects of subchronic methidathion toxicity on rat liver: role of antioxidant vitamins C and E. *Cell Biol Toxicol* 2006; **22**: 221-227 [PMID: 16583303 DOI: 10.1007/s10565-006-0039-7]
- 37 **Petersen MC**, Vatner DF, Shulman GI. Regulation of hepatic glucose metabolism in health and disease. *Nat Rev Endocrinol* 2017; **13**: 572-587 [PMID: 28731034 DOI: 10.1038/nrendo.2017.80]
- 38 **Ince S**, Arslan-Acaroz D, Demirel HH, Varol N, Ozyurek HA, Zemheri F, Kucukurt I. Taurine alleviates malathion induced lipid peroxidation, oxidative stress, and proinflammatory cytokine gene expressions in rats. *Biomed Pharmacother* 2017; **96**: 263-268 [PMID: 28987951 DOI: 10.1016/j.biopha.2017.09.141]
- 39 **Slotkin TA**, Lassiter TL, Ryde IT, Wrench N, Levin ED, Seidler FJ. Consumption of a high-fat diet in adulthood ameliorates the effects of neonatal parathion exposure on acetylcholine systems in rat brain regions. *Environ Health Perspect* 2009; **117**: 916-922 [PMID: 19590683 DOI: 10.1289/ehp.0800459]
- 40 **Koundinya PR**, Ramamurthi R. Effect of organophosphate pesticide Sumithion (Fenitrothion) on

- some aspects of carbohydrate metabolism in a freshwater fish, *Sarotherodon* (Tilapia) mossambicus (Peters). *Experientia* 1979; **35**: 1632-1633 [PMID: 520481 DOI: 10.1007/BF01953236]
- 41 **Romero-Navarro G**, Lopez-Aceves T, Rojas-Ochoa A, Fernandez Mejia C. Effect of dichlorvos on hepatic and pancreatic glucokinase activity and gene expression, and on insulin mRNA levels. *Life Sci* 2006; **78**: 1015-1020 [PMID: 16153661 DOI: 10.1016/j.lfs.2005.06.010]
- 42 **Rezg R**, Mornagui B, El-Fazaa S, Gharbi N. Caffeic acid attenuates malathion induced metabolic disruption in rat liver, involvement of acetylcholinesterase activity. *Toxicology* 2008; **250**: 27-31 [PMID: 18588939 DOI: 10.1016/j.tox.2008.05.017]
- 43 **Rezg R**, Mornagui B, El-Arbi M, Kamoun A, El-Fazaa S, Gharbi N. Effect of subchronic exposure to malathion on glycogen phosphorylase and hexokinase activities in rat liver using native PAGE. *Toxicology* 2006; **223**: 9-14 [PMID: 16621213 DOI: 10.1016/j.tox.2006.02.020]
- 44 **Lee Y**, Berglund ED, Yu X, Wang MY, Evans MR, Scherer PE, Holland WL, Charron MJ, Roth MG, Unger RH. Hyperglycemia in rodent models of type 2 diabetes requires insulin-resistant alpha cells. *Proc Natl Acad Sci U S A* 2014; **111**: 13217-13222 [PMID: 25157166 DOI: 10.1073/pnas.1409638111]
- 45 **Rider MH**, Bertrand L, Vertommen D, Michels PA, Rousseau GG, Hue L. 6-phosphofructo-2-kinase/fructose-2,6-bisphosphatase: head-to-head with a bifunctional enzyme that controls glycolysis. *Biochem J* 2004; **381**: 561-579 [PMID: 15170386 DOI: 10.1042/bj20040752]
- 46 **Adigun AA**, Wrench N, Seidler FJ, Slotkin TA. Neonatal organophosphorus pesticide exposure alters the developmental trajectory of cell-signaling cascades controlling metabolism: differential effects of diazinon and parathion. *Environ Health Perspect* 2010; **118**: 210-215 [PMID: 20123610 DOI: 10.1289/ehp.0901237]
- 47 **Siddle K**, Kane-Maguire B, Campbell AK. The effects of glucagon and insulin on adenosine 3':5'-cyclic monophosphate concentrations in an organ culture of mature rat liver. *Biochem J* 1973; **132**: 765-773 [PMID: 4352833 DOI: 10.1042/bj1320765]
- 48 **White MF**. IRS proteins and the common path to diabetes. *Am J Physiol Endocrinol Metab* 2002; **283**: E413-E422 [PMID: 12169433 DOI: 10.1152/ajpendo.00514.2001]
- 49 **Shah OJ**, Wang Z, Hunter T. Inappropriate activation of the TSC/Rheb/mTOR/S6K cassette induces IRS1/2 depletion, insulin resistance, and cell survival deficiencies. *Curr Biol* 2004; **14**: 1650-1656 [PMID: 15380067 DOI: 10.1016/j.cub.2004.08.026]
- 50 **Liang Y**, Zhan J, Liu D, Luo M, Han J, Liu X, Liu C, Cheng Z, Zhou Z, Wang P. Organophosphorus pesticide chlorpyrifos intake promotes obesity and insulin resistance through impacting gut and gut microbiota. *Microbiome* 2019; **7**: 19 [PMID: 30744700 DOI: 10.1186/s40168-019-0635-4]
- 51 **Arkan MC**, Hevener AL, Greten FR, Maeda S, Li ZW, Long JM, Wynshaw-Boris A, Poli G, Olefsky J, Karin M. IKK-beta links inflammation to obesity-induced insulin resistance. *Nat Med* 2005; **11**: 191-198 [PMID: 15685170 DOI: 10.1038/nm1185]
- 52 **Aguirre V**, Uchida T, Yenush L, Davis R, White MF. The c-Jun NH(2)-terminal kinase promotes insulin resistance during association with insulin receptor substrate-1 and phosphorylation of Ser(307). *J Biol Chem* 2000; **275**: 9047-9054 [PMID: 10722755 DOI: 10.1074/jbc.275.12.9047]
- 53 **Dröge W**. Oxidative enhancement of insulin receptor signaling: experimental findings and clinical implications. *Antioxid Redox Signal* 2005; **7**: 1071-1077 [PMID: 15998262 DOI: 10.1089/ars.2005.7.1071]
- 54 **Possamai FP**, Fortunato JJ, Feier G, Agostinho FR, Quevedo J, Wilhelm Filho D, Dal-Pizzol F. Oxidative stress after acute and sub-chronic malathion intoxication in Wistar rats. *Environ Toxicol Pharmacol* 2007; **23**: 198-204 [PMID: 21783758 DOI: 10.1016/j.etap.2006.09.003]
- 55 **Aly N**, El-Gendy K, Mahmoud F, El-Sebae AK. Protective effect of vitamin c against chlorpyrifos oxidative stress in male mice. *Pestic Biochem Physiol* 2010; **97**: 7-12 [DOI: 10.1016/j.pestbp.2009.11.007]
- 56 **Rahimi R**, Abdollahi M. A review on the mechanisms involved in hyperglycemia induced by organophosphorus pesticides. *Pestic Biochem Physiol* 2007; **88**: 115-121 [DOI: 10.1016/j.pestbp.2006.10.003]
- 57 **Morino K**, Petersen KF, Shulman GI. Molecular mechanisms of insulin resistance in humans and their potential links with mitochondrial dysfunction. *Diabetes* 2006; **55** Suppl 2: S9-S15 [PMID: 17130651 DOI: 10.2337/db06-S002]
- 58 **De Bleecker JL**. The intermediate syndrome in organophosphate poisoning: an overview of experimental and clinical observations. *J Toxicol Clin Toxicol* 1995; **33**: 683-686 [PMID: 8523492 DOI: 10.3109/15563659509010628]
- 59 **Smith A**, Yu X, Yin L. Diazinon exposure activated transcriptional factors CCAAT-enhancer-binding proteins α (C/EBP α) and peroxisome proliferator-activated receptor γ (PPAR γ) and induced adipogenesis in 3T3-L1 preadipocytes. *Pestic Biochem Physiol* 2018; **150**: 48-58 [PMID: 30195387 DOI: 10.1016/j.pestbp.2018.07.003]
- 60 **Rathish D**, Agampodi SB, Jayasumana MACS, Siribaddana SH. From organophosphate poisoning to diabetes mellitus: The incretin effect. *Med Hypotheses* 2016; **91**: 53-55 [PMID: 27142144 DOI: 10.1016/j.mehy.2016.04.002]
- 61 **Rathish D**, Senavirathna I, Jayasumana C, Agampodi S, Siribaddana S. A low GLP-1 response among patients treated for acute organophosphate and carbamate poisoning: a comparative cross-sectional study from an agrarian region of Sri Lanka. *Environ Sci Pollut Res Int* 2019; **26**: 2864-2872 [PMID: 30499084 DOI: 10.1007/s11356-018-3818-9]
- 62 **Shobha TR**, Prakash O. Glycosuria in organophosphate and carbamate poisoning. *J Assoc*

- Physicians India* 2000; **48**: 1197-1199 [PMID: [11280228](#)]
- 63 **Kaya Y**, Bas O, Hanci H, Cankaya S, Nalbant I, Odaci E, Avni Uydu H, Aslan A. Acute renal involvement in organophosphate poisoning: histological and immunochemical investigations. *Ren Fail* 2018; **40**: 410-415 [PMID: [30012025](#) DOI: [10.1080/0886022X.2018.1489289](#)]
- 64 **Poovala VS**, Huang H, Salahudeen AK. Role of reactive oxygen metabolites in organophosphate-bidrin-induced renal tubular cytotoxicity. *J Am Soc Nephrol* 1999; **10**: 1746-1752 [PMID: [10446942](#) DOI: [10.1681/ASN.V1081746](#)]
- 65 **Ren X**, Han HJ, Lee YJ, Lee SH, Ng HY, Chae KJ, Kim IS. Proapoptotic effect of a micropollutant (tris-(2-chloroethyl)-phosphate) at environmental level in primary cultured renal proximal tubule cells. *J Water Health* 2012; **10**: 522-530 [PMID: [23165709](#) DOI: [10.2166/wh.2012.180](#)]
- 66 **Lewy PR**, Quintanilla A, Levin NW, Kessler RH. Renal energy metabolism and sodium reabsorption. *Annu Rev Med* 1973; **24**: 365-384 [PMID: [4268018](#) DOI: [10.1146/annurev.me.24.020173.002053](#)]
- 67 **Lin YF**, Lin SL, Huang TM, Yang SY, Lai TS, Chen L, Wu VC, Chu TS, Wu KD; National Taiwan University Hospital Study Group on Acute Renal Failure (NSARF). New-Onset Diabetes After Acute Kidney Injury Requiring Dialysis. *Diabetes Care* 2018; **41**: 2105-2110 [PMID: [30104297](#) DOI: [10.2337/dc17-2409](#)]
- 68 **Legouis D**, Ricksten SE, Faivre A, Verissimo T, Gariani K, Verney C, Galichon P, Berchtold L, Feraille E, Fernandez M, Placier S, Koppitch K, Hertig A, Martin PY, Naesens M, Pugin J, McMahon AP, Cippà PE, de Seigneux S. Altered proximal tubular cell glucose metabolism during acute kidney injury is associated with mortality. *Nat Metab* 2020; **2**: 732-743 [PMID: [32694833](#) DOI: [10.1038/s42255-020-0238-1](#)]
- 69 **Lee FY**, Chen WK, Lin CL, Lai CY, Wu YS, Lin IC, Kao CH. Organophosphate Poisoning and Subsequent Acute Kidney Injury Risk: A Nationwide Population-Based Cohort Study. *Medicine (Baltimore)* 2015; **94**: e2107 [PMID: [26632728](#) DOI: [10.1097/MD.00000000000002107](#)]
- 70 **Jiang YD**, Chang CH, Tai TY, Chen JF, Chuang LM. Incidence and prevalence rates of diabetes mellitus in Taiwan: analysis of the 2000-2009 Nationwide Health Insurance database. *J Formos Med Assoc* 2012; **111**: 599-604 [PMID: [23217595](#) DOI: [10.1016/j.jfma.2012.09.014](#)]
- 71 **Karalliedde L**, Baker D, Marrs TC. Organophosphate-induced intermediate syndrome: aetiology and relationships with myopathy. *Toxicol Rev* 2006; **25**: 1-14 [PMID: [16856766](#) DOI: [10.2165/00139709-200625010-00001](#)]
- 72 **Ahlgren JD**, Manz HJ, Harvey JC. Myopathy of chronic organophosphate poisoning: a clinical entity? *South Med J* 1979; **72**: 555-558, 563 [PMID: [441767](#) DOI: [10.1097/00007611-197905000-00015](#)]
- 73 **Miranda J**, McConnell R, Wesseling C, Cuadra R, Delgado E, Torres E, Keifer M, Lundberg I. Muscular strength and vibration thresholds during two years after acute poisoning with organophosphate insecticides. *Occup Environ Med* 2004; **61**: e4 [PMID: [14691285](#)]
- 74 **Yang Q**, Zhang Y, Zeng Q, Yang C, Shi J, Zhang C, Ni X, Du Z, Tang Z, Hu J, Li X, Cai J, Li Q, Cheng Q. Correlation Between Diabetic Peripheral Neuropathy and Sarcopenia in Patients with Type 2 Diabetes Mellitus and Diabetic Foot Disease: A Cross-Sectional Study. *Diabetes Metab Syndr Obes* 2020; **13**: 377-386 [PMID: [32104034](#) DOI: [10.2147/DMSO.S237362](#)]
- 75 **Hong S**, Chang Y, Jung HS, Yun KE, Shin H, Ryu S. Relative muscle mass and the risk of incident type 2 diabetes: A cohort study. *PLoS One* 2017; **12**: e0188650 [PMID: [29190709](#) DOI: [10.1371/journal.pone.0188650](#)]
- 76 **Scott D**, de Courten B, Ebeling PR. Sarcopenia: a potential cause and consequence of type 2 diabetes in Australia's ageing population? *Med J Aust* 2016; **205**: 329-333 [PMID: [27681976](#) DOI: [10.5694/mja16.00446](#)]
- 77 **Larrimer JN**, Mazzaferri EL, Cataland S, Mekhjian HS. Effect of atropine on glucose-stimulated gastric inhibitory polypeptide. *Diabetes* 1978; **27**: 638-642 [PMID: [658609](#) DOI: [10.2337/diab.27.6.638](#)]
- 78 **Baumert JE Jr**, Cataland S, Tetirick CE Jr, Pace WG, Mazzaferri EL. Effect of atropine on meal-stimulated gastrin and gastric inhibitory polypeptide (GIP) release. *J Clin Endocrinol Metab* 1978; **46**: 473-476 [PMID: [752033](#) DOI: [10.1210/jcem-46-3-473](#)]
- 79 **Schafer J**, Legare DJ, Lutt WW. Acetylcholinesterase antagonist potentiated insulin action in fed but not fasted state. *J Pharmacol Exp Ther* 2010; **333**: 621-628 [PMID: [20133391](#) DOI: [10.1124/jpet.109.164509](#)]
- 80 **Afonso RA**, Lutt WW, Ribeiro RT, Legare DJ, Macedo MP. Insulin resistance in two animal models of obesity: A comparison of HISS-dependent and HISS-independent insulin action in high-fat diet-fed and Zucker rats. *Proc West Pharmacol Soc* 2007; **50**: 110-114 [PMID: [18605245](#)]
- 81 **Svensson MK**, Jansson PA, Persson AL, Sjöstrand M, Eriksson JW. Atropine improves insulin sensitivity in both lean and abdominally obese subjects. *J Clin Endocrinol Metab* 2011; **96**: E1843-E1847 [PMID: [21865364](#) DOI: [10.1210/jc.2011-0669](#)]
- 82 **Gundamaraju R**, Vemuri R. Pathophysiology of Greedy Colon and Diabetes: Role of Atropine in worsening of Diabetes. *Euroasian J Hepatogastroenterol* 2014; **4**: 51-54 [PMID: [29264319](#) DOI: [10.5005/jp-journals-10018-1096](#)]
- 83 **El-Ebiary AA**, Elsharkawy RE, Soliman NA, Soliman MA, Hashem AA. N-acetylcysteine in Acute Organophosphorus Pesticide Poisoning: A Randomized, Clinical Trial. *Basic Clin Pharmacol Toxicol* 2016; **119**: 222-227 [PMID: [26786042](#) DOI: [10.1111/bcpt.12554](#)]
- 84 **Falach-Malik A**, Rozenfeld H, Chetboun M, Rozenberg K, Elyasiyan U, Sampson SR, Rosenzweig

- T. N-Acetyl-L-Cysteine inhibits the development of glucose intolerance and hepatic steatosis in diabetes-prone mice. *Am J Transl Res* 2016; **8**: 3744-3756 [PMID: 27725855]
- 85 **Charron MJ**, Williams L, Seki Y, Du XQ, Chaurasia B, Saghatelian A, Summers SA, Katz EB, Vuguin PM, Reznik SE. Antioxidant Effects of N-Acetylcysteine Prevent Programmed Metabolic Disease in Mice. *Diabetes* 2020; **69**: 1650-1661 [PMID: 32444367 DOI: 10.2337/db19-1129]
- 86 **Argaev Frenkel L**, Rozenfeld H, Rozenberg K, Sampson SR, Rosenzweig T. N-Acetyl-L-Cysteine Supplement in Early Life or Adulthood Reduces Progression of Diabetes in Nonobese Diabetic Mice. *Curr Dev Nutr* 2019; **3**: nzy097 [PMID: 30993256 DOI: 10.1093/cdn/nzy097]
- 87 **Yurumez Y**, Cemek M, Yavuz Y, Birdane YO, Buyukokuroglu ME. Beneficial effect of N-acetylcysteine against organophosphate toxicity in mice. *Biol Pharm Bull* 2007; **30**: 490-494 [PMID: 17329844 DOI: 10.1248/bpb.30.490]
- 88 **Bayır A**, Kara H, Köylü Ö, Kocabaş R, Ak A. Effects of n-acetylcysteine on the erythrocyte and liver cholinesterase, nitric oxide and malondialdehyde levels in acute organophosphate toxicity. *Crit Care* 2011; **15**: P366 [DOI: 10.1186/cc9786]
- 89 **Juntarawijit C**, Juntarawijit Y. Association between diabetes and pesticides: a case-control study among Thai farmers. *Environ Health Prev Med* 2018; **23**: 3 [PMID: 29374457 DOI: 10.1186/s12199-018-0692-5]
- 90 **Velmurugan G**, Swaminathan K, Mohanraj S, Dhivakar M, Veerasekar G, Alexander T, Cherian M, Palaniswami NG, Pradeep T. Association of co-accumulation of arsenic and organophosphate insecticides with diabetes and atherosclerosis in a rural agricultural community: KMCH-NNCD-I study. *Acta Diabetol* 2020; **57**: 1159-1168 [PMID: 32314019 DOI: 10.1007/s00592-020-01516-6]
- 91 **Abass K**, Pelkonen O. The inhibition of major human hepatic cytochrome P450 enzymes by 18 pesticides: comparison of the N-in-one and single substrate approaches. *Toxicol In Vitro* 2013; **27**: 1584-1588 [PMID: 22634058 DOI: 10.1016/j.tiv.2012.05.003]
- 92 **Kaur G**, Jain AK, Singh S. CYP/PON genetic variations as determinant of organophosphate pesticides toxicity. *J Genet* 2017; **96**: 187-201 [PMID: 28360405 DOI: 10.1007/s12041-017-0741-7]
- 93 **Costa LG**, Cole TB, Jarvik GP, Furlong CE. Functional genomic of the paraoxonase (PON1) polymorphisms: effects on pesticide sensitivity, cardiovascular disease, and drug metabolism. *Annu Rev Med* 2003; **54**: 371-392 [PMID: 12525679 DOI: 10.1146/annurev.med.54.101601.152421]
- 94 **Al-Hakeem MM**, Abotalib Z, Alharbi KK, Khan IA. Relationship between the paraoxonase 1 gene glutamine 192 to arginine polymorphism and gestational diabetes mellitus in Saudi women. *Clin Biochem* 2014; **47**: 122-125 [PMID: 25036896 DOI: 10.1016/j.clinbiochem.2014.07.005]
- 95 **Onat A**, Can G, Hergenç G, Yazici M, Karabulut A, Albayrak S. Serum apolipoprotein B predicts dyslipidemia, metabolic syndrome and, in women, hypertension and diabetes, independent of markers of central obesity and inflammation. *Int J Obes (Lond)* 2007; **31**: 1119-1125 [PMID: 17299378 DOI: 10.1038/sj.ijo.0803552]
- 96 **Leonel Javeres MN**, Habib R, Judith N, Iqbal M, Nepovimova E, Kuca K, Batool S, Nurulain SM. Analysis of PON1 gene polymorphisms (rs662 and rs854560) and inflammatory markers in organophosphate pesticides exposed cohorts from two distinct populations. *Environ Res* 2020; **191**: 110210 [PMID: 32949615 DOI: 10.1016/j.envres.2020.110210]
- 97 **Seesen M**, Lucchini RG, Siriruttanapruk S, Sapbamrer R, Hongsihong S, Woskie S, Kongtip P. Association between Organophosphate Pesticide Exposure and Insulin Resistance in Pesticide Sprayers and Nonfarmworkers. *Int J Environ Res Public Health* 2020; **17** [PMID: 33158102 DOI: 10.3390/ijerph17218140]
- 98 **Yurumez Y**, Durukan P, Yavuz Y, Ikizceli I, Avsarogullari L, Ozkan S, Akdur O, Ozdemir C. Acute organophosphate poisoning in university hospital emergency room patients. *Intern Med* 2007; **46**: 965-969 [PMID: 17603234 DOI: 10.2169/internalmedicine.46.6304]
- 99 **Moon JM**, Chun BJ, Cho YS. Hyperglycemia at presentation is associated with in hospital mortality in non-diabetic patient with organophosphate poisoning. *Clin Toxicol (Phila)* 2016; **54**: 252-258 [PMID: 26763288 DOI: 10.3109/15563650.2015.1128544]
- 100 **Raafat N**, Abass MA, Salem HM. Malathion exposure and insulin resistance among a group of farmers in Al-Sharkia governorate. *Clin Biochem* 2012; **45**: 1591-1595 [PMID: 22885474 DOI: 10.1016/j.clinbiochem.2012.07.108]



Published by **Baishideng Publishing Group Inc**
7041 Koll Center Parkway, Suite 160, Pleasanton, CA 94566, USA

Telephone: +1-925-3991568

E-mail: bpgoffice@wjgnet.com

Help Desk: <https://www.f6publishing.com/helpdesk>

<https://www.wjgnet.com>

