


 Cite this: *RSC Adv.*, 2020, 10, 12308

# Epitaxial synthesis of Ni–MoS<sub>2</sub>/Ti<sub>3</sub>C<sub>2</sub>T<sub>x</sub> MXene heterostructures for hydrodesulfurization†

 Mari Vinoba, \* R. Navamani and Hanadi Al-Sheeha

Hierarchical structures of 2D layered Ti<sub>3</sub>C<sub>2</sub>T<sub>x</sub> MXene hold potential for a range of applications. In this study, catalysts comprising few-layered MoS<sub>2</sub> with Ti<sub>3</sub>C<sub>2</sub>T<sub>x</sub> have been formulated for hydrodesulfurization (HDS). The support Ti<sub>3</sub>C<sub>2</sub>T<sub>x</sub> was derived from MAX phases (Ti<sub>3</sub>AlC<sub>2</sub>) via a liquid-phase exfoliation process, while MoS<sub>2</sub> was obtained from synthesized aqueous ammonium tetrathiomolybdate (ATM). Furthermore, a series of catalysts with different architectures was synthesized by confinement of ATM and/or the promoter Ni in Ti<sub>3</sub>C<sub>2</sub>T<sub>x</sub> at different mole ratios, through a thermal conversion process. The synthesized MoS<sub>2</sub>/Ti<sub>3</sub>C<sub>2</sub>T<sub>x</sub> and Ni–MoS<sub>2</sub>/Ti<sub>3</sub>C<sub>2</sub>T<sub>x</sub> catalysts were characterized using X-ray diffraction (XRD), Brunauer–Emmett–Teller (BET), scanning electron microscopy coupled with energy dispersive X-ray spectroscopy (SEM-EDS), high-resolution transmission electron microscopy (HRTEM), and temperature-programmed reduction (TPR) measurements. The number of MoS<sub>2</sub> layers formed on the Ti<sub>3</sub>C<sub>2</sub>T<sub>x</sub> support was calculated using Raman spectroscopy. The heterostructured few-layered MoS<sub>2</sub>/Ti<sub>3</sub>C<sub>2</sub>T<sub>x</sub> catalysts were applied in sulfur removal efficiency experiments involving thiophene. The active MoS<sub>2</sub> sites confined by the Ti<sub>3</sub>C<sub>2</sub>T<sub>x</sub> enhanced hydrogen activation by proton saturation, and the electron charge stabilized the sulfur atom to facilitate hydrogenation reactions, leading to predominant formation of C<sub>4</sub> hydrocarbons. The Ni–MoS<sub>2</sub>/Ti<sub>3</sub>C<sub>2</sub>T<sub>x</sub> showed the best activity at a promoter molar ratio of 0.3 when compared to the other catalysts. In particular, it is evident from the results that ATM and Ti<sub>3</sub>C<sub>2</sub>T<sub>x</sub> are potential materials for the *in situ* fabrication of hierarchical few-layered MoS<sub>2</sub>/Ti<sub>3</sub>C<sub>2</sub>T<sub>x</sub> catalysts for enhancing hydrodesulfurization activity in clean fuel production.

 Received 6th February 2020  
 Accepted 12th March 2020

DOI: 10.1039/d0ra01158d

[rsc.li/rsc-advances](http://rsc.li/rsc-advances)

## Introduction

The current socio-economic climate demands control over production costs, innovative technologies, zero pollution to life-giving sources, and “no waste” management in petroleum refineries. Many factors affect the goals of petroleum refineries, and one of these is the effect of sulfur emitted from automotive fuels to the environment; thus environmental protection agencies have imposed stringent regulations on sulfur levels in transportation fuels.<sup>1,2</sup> Over recent years, many conventional supported and unsupported NiMo and CoMo-sulfide catalysts have been employed in the hydrodesulfurization (HDS) reaction.<sup>3,4</sup> The supported catalysts show more stability, offer enhanced dispersion of active metal sites on the surface, and are more durable than unsupported catalysts. The prominent activity of hydrotreating catalysts depends on the potential of the active sites, and the structure and textural characteristics of the supports.<sup>5–7</sup> Generally, alumina is used as a support as it is economical and possesses unique physicochemical properties.

However, the conventional sulfidation of Mo-oxide on alumina with H<sub>2</sub>S treatment occurs at a high temperature, which may lead to the formation of a mixture of Mo-sulfides/oxides, and the inhibition of HDS activity due to strong metal–alumina interactions.<sup>8–10</sup> Furthermore, promoted hydrotreating catalysts show enhanced HDS activity due to promoter atoms which are dispersed on the MoS<sub>2</sub> edges of the square pyramidal structure in the same plane as the Mo atoms.<sup>11,12</sup> It is reported that the morphology of promoter–Mo–sulfur catalysts with supports is characterized either by a highly dispersed single-layer structure that strongly interacts with the support and has low sulfur coordination with Mo and the promoter (Type-I) or by a less dispersed few-layered structure that weakly interacts with the support due to complete sulfidation and has higher sulfur coordination to Mo and the promoter (Type-II). Due to the structural properties, it has been reported in previous studies that the Type-II structure reveals higher HDS activity than the Type-I structure.<sup>13,14</sup> Notably, a few reports have described the use of ammonium thiomolybdates as precursors for the preparation of active metal-sulfide HDS catalysts due to their unique electronic structures and chemical reactivity.<sup>15,16</sup> Currently, the thermal conversion of ammonium thiomolybdate at a low temperature is used to produce uniformly active MoS<sub>2</sub> dispersed on supported HDS catalysts; this could provide a more

Petroleum Research Center, Kuwait Institute for Scientific Research, Kuwait. E-mail: vmari@kISR.edu.kw; vinoba76@gmail.com

† Electronic supplementary information (ESI) available: Details of the materials and their characterization; XRD patterns for MAX, MXene and catalysts; and BET characterization of catalysts. See DOI: 10.1039/d0ra01158d



economical method than conventional sulfidation of molybdenum oxides. Moreover, the thiomolybdate precursor contains sulfur bonded to Mo in a tetrahedral coordination, which undergoes a topotactic reaction during the thermal conversion; as a result, the *c*-axis of sulfide is retained in the precursor.<sup>17</sup>

In recent years, metal carbides have played a significant role in the formulation of new generation catalysts with novel support systems that can overcome the inhibition of HDS efficiency due to strong metal-support interactions. This hybrid system composed of a support and active metals enhances the removal of sulfur through the breaking of the ring S-C bonds in thiophene derivatives.<sup>18,19</sup> In this regard, transition metal carbides and nitrides that possess significantly altered physical and chemical properties have been recognized as encouraging support materials for crude oil hydroprocessing due to their excellent performance and stability in HDS processes.<sup>7,20</sup> Transition metal carbides have attracted attention as prospective catalysts for use in the HDS process as they exhibit hydrogenating properties similar to those of noble metals,<sup>21</sup> and at the same time, they are sulfur-tolerant.<sup>22</sup> Currently, however, researchers are giving more attention to the new family of two-dimensional (2D) transition metal carbides and nitrides (MXenes) (where M refers to early transition metals (groups 13 and 14) and X corresponds to carbon and/or nitrogen) because of their unique structure, mechanical, optical and electronic properties, large specific surface areas, surface hydrophilicity, and tunable compositions.<sup>23</sup> MXenes ( $M_{n+1}X_nT_x$ ) (where  $T_x$  denotes surface terminated functional groups (-F, -OH, and -O)) are derived from MAX phases ( $M_{n+1}AX_n$ ) (where A stands for mostly IIIA or IVA group elements) by selective etching of the A layer. The ordered MXenes comprise few atoms that have *n* layers of sandwiched Ti-C-Ti sheets. MXene-based hybrid materials play a vital role in a wide range of applications such as energy storage,<sup>24</sup> hydrogen storage,<sup>25</sup> catalysis,<sup>26</sup> sensing,<sup>27</sup> water purification,<sup>28</sup> and gas separation<sup>29</sup> due to the attached surface anion functional groups, which provide hydrophilic surfaces and enhance the dispersion of the catalysts.

Based on the above, the MXene  $Ti_3C_2T_x$  was derived by etching the Al-layer from a MAX compound  $Ti_3AlC_2$ . A few-layered  $MoS_2$  catalyst was developed by combining the active metal and promoter on the MXene support (Ni-Mo-S/ $Ti_3C_2T_x$ ). It was investigated for thiophene HDS at a low hydrogen pressure and reaction temperature. Synthesized ammonium thiomolybdate (ATM) was used as a precursor for the preparation of the  $MoS_2$  catalyst. The few-layered  $MoS_2$  was derived by controlled calcination in an inert medium in a rotary furnace.

## Experimental

### Preparation of $Ti_3C_2T_x$ MXene and ATM solution

$Ti_3AlC_2$  powder was dispersed slowly in 30% HF solution in a ratio of 1 : 10 ( $Ti_3AlC_2$  : HF) (Caution: exothermic reaction) with continuous stirring at room temperature for 48 h. This exfoliated the MXene layers by etching the aluminum. The dealuminated product MXene ( $Ti_3C_2T_x$ ) was washed in water and centrifuged several times until the pH reached neutral. Then it was dried at 60 °C for 12 h.<sup>30</sup> A stock solution of ATM was

prepared by dissolving ammonium heptamolybdate (15.8 mmol) in a mixture of ammonium hydroxide and water.<sup>31</sup> The mixture was purged with 10% hydrogen sulfide ( $H_2S/Ar$ ) at 100 mL  $min^{-1}$  for sulfidation at room temperature for 2 h. The temperature was gradually increased to 60 °C with continuous  $H_2S$  purging until a dark red stock solution was obtained, and this was used as a precursor for  $MoS_2$ .

### Formulation of the $MoS_2/Ti_3C_2T_x$ MXene catalysts

The incipient wetness impregnation technique was used to prepare two sets of  $Ti_3C_2T_x$  supported target catalysts. One set (termed AMA) was prepared with active  $MoS_2$  on  $Ti_3C_2T_x$ , and the other (termed NAMA) was prepared using a Ni promoter with  $MoS_2$  on  $Ti_3C_2T_x$ . A series of AMA catalysts were formulated at different ratios of Mo (6, 9, and 12 wt%) by dispersion of the ATM stock solution in the  $Ti_3C_2T_x$  support. These materials were dried and calcined in the rotary furnace under  $N_2$  and are denoted as AMA-1, AMA-2, and AMA-3, respectively. The NAMA catalysts were prepared by a stepwise impregnation method. First, ATM solutions (6, 9, and 12 wt% Mo) were impregnated on MXene, as above, and then the samples were impregnated with nickel nitrate. The Ni/(Ni + Mo) ratios for the samples with 6, 9 and 12 wt% Mo were maintained at 0.39, 0.30, and 0.24, respectively. Subsequently, the materials were calcined in an inert medium to give the NAMA catalysts denoted as NAMA-1, NAMA-2, and NAMA-3, respectively. The above-synthesized series of AMA and NAMA catalysts were next treated with 10%  $H_2S$  (balanced  $H_2$ ) in a reactor at 375 °C for 4 h, and then the temperature was reduced to 350 °C for the thiophene HDS reactions; the corresponding catalysts are denoted as S-AMA and S-NAMA, respectively. All the synthesized materials were characterized and investigated for thiophene HDS activity.

### Catalytic properties of the MXene-based catalysts

The HDS activity of each synthesized catalyst was assessed in a fixed glass reactor associated with a thiophene saturator system. Hydrogen was bubbled through thiophene to attain an equilibrium between liquid thiophene and its vapor, and then the produced vent gas mixture ( $H_2$  + thiophene) was used as a feed.<sup>32</sup> The thiophene concentration in the reactor inlet was quantified from its vapor pressure using the Antoine eqn (1); the molar fraction of thiophene + hydrogen is given by eqn (2).

$$\ln P^{\text{sat}} \text{ (mm Hg)} = A - B/(C + T_{\text{sat}}) \quad (1)$$

$$X_{\text{thiophene}} = P^{\text{sat}}/P \quad (2)$$

where *P* is the total pressure (mm Hg),  $P^{\text{sat}}$  is the vapor pressure (mm Hg), and  $T_{\text{sat}}$  is the saturator temperature (K) of thiophene.  $X_{\text{thiophene}}$  is a molar fraction. The calculated values were  $P^{\text{sat}} = 28.47$  mm Hg (3.80 kPa), and  $X_{\text{thiophene}} = 0.0375$ . The Antoine coefficients  $A = 16.0243$ ,  $B = 2869.07$ , and  $C = -58.8$  were valid in the temperature range from 260 to 380 K.<sup>33</sup> From the conditions adopted, it was calculated that the inlet gas mixture

consisted of about 3.75 mol% thiophene in H<sub>2</sub> when the saturator temperature was set at 5 °C.

The desired amount of catalyst was placed in the glass reactor and purged with hydrogen-containing thiophene vapor at 50 mL min<sup>-1</sup> at 350 °C. The reactor outlet was connected to an online gas chromatograph (GC) for the quantification of C<sub>1</sub>–C<sub>4</sub> hydrocarbon products and unreacted thiophene. The GC was calibrated with Agilent refinery gas mixture P/N 5190-0519.<sup>31</sup> The data were recorded at periodic intervals to evaluate the conversion rate and product selectivity. The molar flow of thiophene into the reactor (3) and HDS conversion rate (4) were calculated as follows:

$$F_{\text{thiophene}} = P^{\text{sat}} \times V/RT_{\text{sat}} \quad (3)$$

$$\text{Conversion rate } (\nu) = F_{\text{thiophene}} \times \alpha/m \quad (4)$$

where  $F_{\text{thiophene}}$  is the molar flow of thiophene (mol h<sup>-1</sup>),  $\nu$  is the conversion rate (mol h<sup>-1</sup> g<sup>-1</sup>), and  $V$ ,  $R$ ,  $\alpha$  and  $m$  are the inlet total flow (L h<sup>-1</sup>), gas constant (0.082057 L atm mol<sup>-1</sup> K<sup>-1</sup>), conversion fraction, and mass of catalyst (g), respectively.

## Results and discussion

### Characterization of the catalysts

The XRD patterns of the pristine MAX phase (Ti<sub>3</sub>AlC<sub>2</sub>), and MXene (Ti<sub>3</sub>C<sub>2</sub>T<sub>x</sub>) are shown in Fig. S1.† Ti<sub>3</sub>AlC<sub>2</sub> displayed characteristic intense peaks at  $2\theta = 9.54^\circ$ ,  $19.17^\circ$ ,  $33.99^\circ$ ,  $38.99^\circ$  and  $40.89^\circ$  corresponding to the planes (002), (004), (101), (104) and (105), respectively. All the  $2\theta$  values agreed with those in JCPDS no. 52-0875, confirming the purity of Ti<sub>3</sub>AlC<sub>2</sub>.<sup>34,35</sup> In the MXene pattern, the most intense peak of Ti<sub>3</sub>AlC<sub>2</sub> located at  $38.99^\circ$  (104) was completely absent due to the HF-etching process that had removed the entire atomic aluminum layer. Also, the Al-layer exfoliated MXene exhibited shifts in two peaks toward lower angles, from  $9.54^\circ$  and  $19.17^\circ$  to  $9.10^\circ$  (002) and  $18.50^\circ$  (004). At the same time, two new peaks emerged at  $2\theta = 27.94^\circ$  (008), and  $60.78^\circ$  (110),<sup>25,36</sup> which confirmed the transformation of Ti<sub>3</sub>AlC<sub>2</sub> to Ti<sub>3</sub>C<sub>2</sub>T<sub>x</sub> MXene.

The XRD patterns of the AMA (Fig. S2†) and NAMA (Fig. 1) catalysts revealed no individual MoS<sub>2</sub> peaks (JCPDS 03-065-0160) due to the formation of nanocrystalline MoS<sub>2</sub> on Ti<sub>3</sub>C<sub>2</sub>T<sub>x</sub>.<sup>37</sup> Furthermore, the (002) peaks of AMA-1, AMA-2, AMA-3, NAMA-1, NAMA-2, and NAMA-3 catalysts were downshifted in comparison to that of Ti<sub>3</sub>C<sub>2</sub>T<sub>x</sub> ( $9.10^\circ$ ) to  $\sim 7.4^\circ$ – $8.3^\circ$ . These shifts towards lower  $2\theta$  values confirmed the enlarged  $d$ -spacing of Ti<sub>3</sub>C<sub>2</sub>T<sub>x</sub> due to the effective intercalation of MoS<sub>2</sub> between the Ti<sub>3</sub>C<sub>2</sub>T<sub>x</sub> layers in the prepared catalysts. In addition, the diffraction peaks of Ti<sub>3</sub>C<sub>2</sub>T<sub>x</sub> were retained at their original  $2\theta$  positions of  $37.6^\circ$  and  $60.78^\circ$  (002); this indicated the persistence of Ti<sub>3</sub>C<sub>2</sub>T<sub>x</sub> in the AMA and NAMA catalysts.<sup>38</sup> The XRD patterns of the NAMA catalysts exhibited new peaks corresponding to TiC and TiO<sub>2</sub> which could be attributed to the minor conversion of Ti<sub>3</sub>C<sub>2</sub>T<sub>x</sub> to TiC and TiO<sub>2</sub> in the presence of the promoter salt during the calcination, but these impurities were relatively very low in the AMA catalysts.

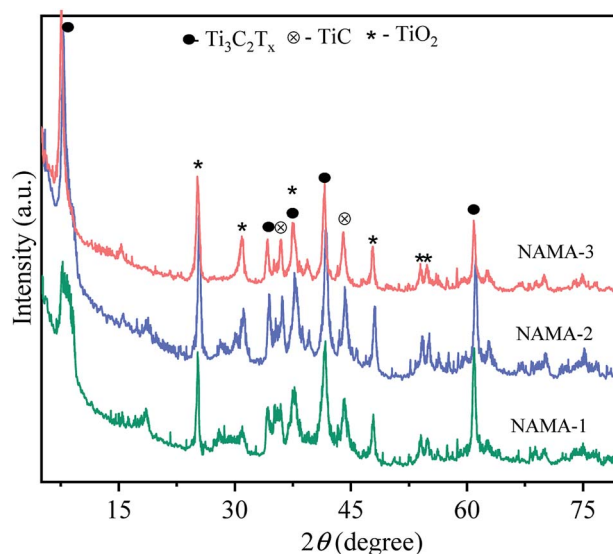


Fig. 1 XRD diffraction patterns of the NAMA (NiMoS<sub>2</sub>/Ti<sub>3</sub>C<sub>2</sub>T<sub>x</sub>) catalysts.

The N<sub>2</sub> adsorption–desorption isotherms of the AMA (Fig. S3†) and NAMA (Fig. 2) catalysts show type H3 hysteresis. The specific surface areas of Ti<sub>3</sub>AlC<sub>2</sub> and Ti<sub>3</sub>C<sub>2</sub>T<sub>x</sub> calculated using the Brunauer–Emmett–Teller (BET) method were found to be 4.2 and 13.5 m<sup>2</sup> g<sup>-1</sup>, respectively. All of the prepared catalysts showed increasing specific surface areas when the Mo loading was increased from 6 to 12%. For example, the BET surface areas of AMA-1, AMA-2, AMA-3, were 34.5, 42.7, and 47.3 m<sup>2</sup> g<sup>-1</sup>, respectively, and the same trend was observed for NAMA-1, NAMA-2, and NAMA-3 which had surface areas of 45.1, 55.8 and 62.8 m<sup>2</sup> g<sup>-1</sup>, respectively. The higher surface areas of the catalysts compared to the support (Ti<sub>3</sub>C<sub>2</sub>T<sub>x</sub>) were most likely due to the intercalation of MoS<sub>2</sub> between the Ti<sub>3</sub>C<sub>2</sub>T<sub>x</sub> interlayers and its anchoring on the surfaces along with the partial

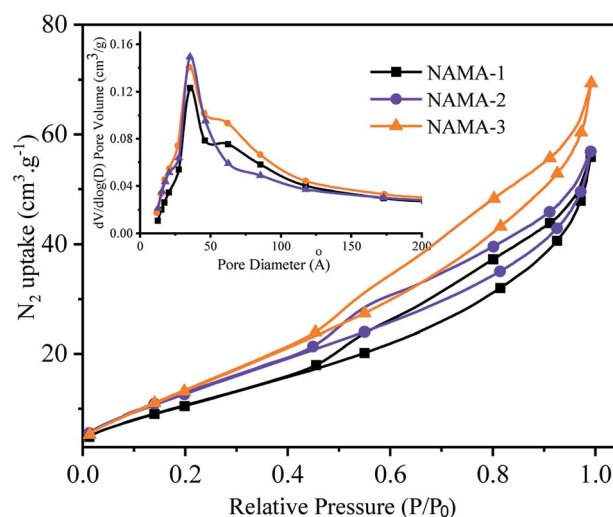


Fig. 2 BET hysteresis loops and pore size profiles of the NAMA catalysts.

delamination of the  $\text{Ti}_3\text{C}_2\text{T}_x$  layers. In addition, the NAMA catalysts had higher surface areas than the AMA type catalysts due to the improved crystallinity of the nickel promoter as well as the  $\text{MoS}_2$  between the  $\text{Ti}_3\text{C}_2\text{T}_x$  interlayers. The pore size distributions indicate that the pores of the AMA and NAMA catalysts were in the mesoporous range (20–500 Å), and results show a decreasing trend from 50 to 40 Å with an increase in Mo loading from 6 to 12 wt%. Thus, the better textural properties of the AMA and NAMA catalysts should be beneficial for enhancing catalyst contact area, and facilitating the access of the reactant to the active  $\text{MoS}_2$  sites on the catalytic surfaces.

Raman spectra of the few-layered  $\text{MoS}_2/\text{MXene}$  catalysts exhibited two characteristic  $\text{MoS}_2$  vibration modes, as shown in Fig. 3. The frequency displacement between the in-plane and out-of-plane Mo–S phonon modes, corresponding to the  $E_{2g}^1$  vibration, softened (red-shifted), while the  $A_{1g}$  vibration stiffened (blue-shifted) in the catalysts.<sup>38,39</sup> These two modes are thickness-dependent and indicate the number of layers.<sup>40</sup> Typically, the difference in vibration modes of monolayer, few-layer, and bulk crystal  $\text{MoS}_2$  are 18, 19–24, and  $>25\text{ cm}^{-1}$ , respectively. The few-layered  $\text{MoS}_2$  catalysts (AMA and NAMA) were successfully derived from the thermal conversion of ATM, and displayed active modes at  $\sim 400\text{ cm}^{-1}$  ( $A_{1g}$ ) and  $\sim 378\text{ cm}^{-1}$  ( $E_{2g}^1$ ); the asymmetric stretching peak at  $477\text{ cm}^{-1}$ , and the symmetric vibration at  $456\text{ cm}^{-1}$  of the Mo=S bond in tetrahedral  $[\text{MoS}_4]^{2-}$  (ref. 31) were not detected. The frequency differences between the vibration modes for AMA-1, AMA-2 and AMA-3 were 22.0, 22.5, and  $22.9\text{ cm}^{-1}$ , respectively, while NANA-1, NAMA-2 and NAMA-3 had differences of 22.2, 22.5, and  $23.1\text{ cm}^{-1}$ , respectively. In contrast, the frequency difference between the  $E_{2g}^1$  and  $A_{1g}$  modes for bulk  $\text{MoS}_2$  was  $25.5\text{ cm}^{-1}$ . Thus, the Raman spectroscopy results for the catalysts illustrated differences between the two vibration modes of  $\sim 22.5\text{ cm}^{-1}$ , which indicated the successful formation of few-layered  $\text{MoS}_2$  on MXene.

The XPS technique was used to investigate the surface electronic states of the available elements in the NAMA-2 catalyst

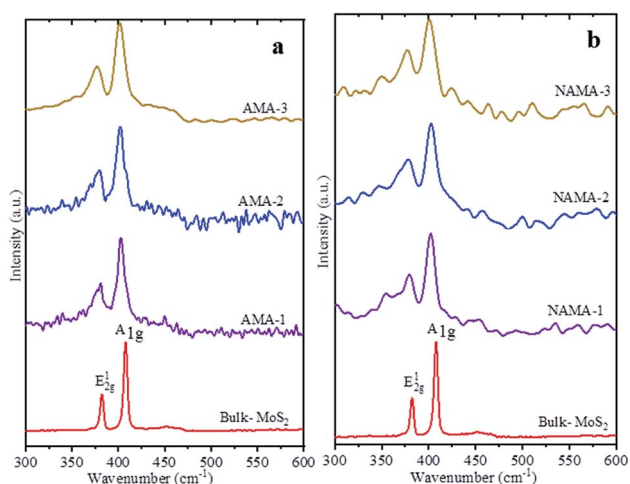


Fig. 3 Raman spectra of the (a) AMA and (b) NAMA catalysts compared with the spectrum of bulk  $\text{MoS}_2$ .

and their terminal groups. The XPS survey spectrum revealed Ni, Mo, S, Ti, C, O, and F elements (Fig. 4a) and so corresponding high-resolution XPS spectra were obtained for Ni 2p, Mo 3d, S 2p, Ti 2p, C 1s, O 1s, and F 1s (Fig. 4b). The photo-emission of the Ti 2p region in the Ni-promoted  $\text{MoS}_2/\text{Ti}_3\text{C}_2\text{T}_x$  (NAMA-2) catalyst was deconvoluted and the peaks were fitted, as shown in Fig. 4b. The Ti 2p spectrum showed three peaks corresponding to O or OH terminated groups placed at binding energies of 454.9, 456.0, and 457.6 eV, and corresponding to Ti–C,  $\text{Ti}^{2+}$ –C and  $\text{Ti}^{4+}$ –C, respectively.<sup>38,41</sup>

The C 1s spectrum of the NAMA-2 catalyst was deconvoluted to four peaks, with the major peak at +284.7 eV attributed to adventitious carbon (C–C) caused by material exposure to the atmosphere. The other peaks at 283.2, 285.8, and 287.4 eV corresponded to Ti–C bonds, surface C–O bonds, and C–F groups, respectively.<sup>42,43</sup> The O 1s profile for the NAMA-2 catalyst was deconvoluted to four peaks located at 529.6, 531.2, 532.8, and 533.8 eV and assigned to  $\text{TiO}_2$ , C–Ti–O<sub>x</sub>,  $\text{Al}_2\text{O}_3$ , and  $\text{H}_2\text{O}(\text{ads})$ . The binding energies of some atoms and groups overlapped with many other peaks due to surface organic contamination. The peak value of C–Ti–O (531.2 eV) was close to that for O atoms near to vacancies in  $\text{TiO}_2$  (531.5 eV). The strongly adsorbed water molecules on the surface, and OH groups at bridging sites of titania appeared at the same binding energy of 533.8 eV. The F 1s spectrum was well fitted<sup>43</sup> to four peaks, of which the main peak for C–Ti–F<sub>x</sub> was located at 685.1 eV, and the peaks for  $\text{TiO}_{2-x}\text{F}_x$ ,  $\text{AlF}_x$ , and  $\text{Al}(\text{OF})_x$  appeared at 683.8, 687.0 and 689.1 eV, respectively.

The Mo 3d region displayed seven peaks, as shown in Fig. 4f. The two peaks for Mo–S bonds located at 228.9 and 231.9 eV corresponded to  $\text{Mo}^{4+} 3d_{5/2}$  and  $\text{Mo}^{4+} 3d_{3/2}$ , respectively.<sup>39,41</sup> Furthermore, a peak was observed at a lower binding energy (225.3 eV) which could be ascribed to S 2s of  $\text{MoS}_2$ . The peaks of Mo–C bonds appeared at 227.7 and 231.8 eV, corresponding to  $\text{Mo} 3d_{5/2}$  and  $\text{Mo} 3d_{3/2}$ , respectively. The higher oxidation state  $\text{Mo}^{6+}$  was also noticed and could be attributed to the partial oxidation of the Mo edges in  $\text{MoS}_2$  from the  $\text{Mo}^{4+}$  to  $\text{Mo}^{6+}$  state ( $\text{MoO}_3$  and  $\text{MoO}_4^{2-}$ ) when exposed to the air. The peaks of  $\text{Mo}^{6+}$  located at 232.8 and 235.2 eV were ascribed to  $\text{Mo}^{6+} 3d_{5/2}$  and  $\text{Mo}^{6+} 3d_{3/2}$ . The S 2p<sub>3/2</sub> and S 2p<sub>1/2</sub> peaks in the S 2p spectrum at 161.5 and 162.9 eV, respectively, corresponded to a doublet of  $\text{S}^{2-}$  species in  $\text{MoS}_2$  (Fig. 4g). The peak at 163.4 eV, ascribed to C–S–C bonds, was due to the strong intercalation of  $\text{MoS}_2$  into the  $\text{Ti}_3\text{C}_2\text{T}_x$  support. Another peak was observed at a high binding energy (169.4 eV), which coincided with the S–O bond, and might be due to the partial oxidation of the S edges in  $\text{MoS}_2$  by exposure to the atmosphere. The Ni 2p spectrum of the NAMA catalyst (Fig. 4h) showed two sets of doublets from Ni 2p<sub>3/2</sub> (NiMoS phase) and Ni 2p<sub>1/2</sub> at 855.4 and 873.2 eV, respectively, as well as satellite (Sat.) peaks at 860.7 and 880.0 eV, which were ascribed to the  $\text{Ni}^{2+}$  valence state.<sup>43</sup> The other two peaks at 857.6 and 873.8 eV corresponded to  $\text{Ni}^{3+}$  ( $\text{Ni}_2\text{O}_3$ ). In the ATM decomposition process,  $\text{MoS}_4^{2-}$  converts to  $\text{MoS}_2$  and evolves  $\text{H}_2\text{S}$ , which in turn causes slight sulfidation of NiO to  $\text{NiS}_x$ , giving a peak located at 853.0 eV, and another small satellite peak at 864.0 eV. Also, the deconvolution of the Ni 2p spectrum indicated the presence of nickel oxide in the catalyst.

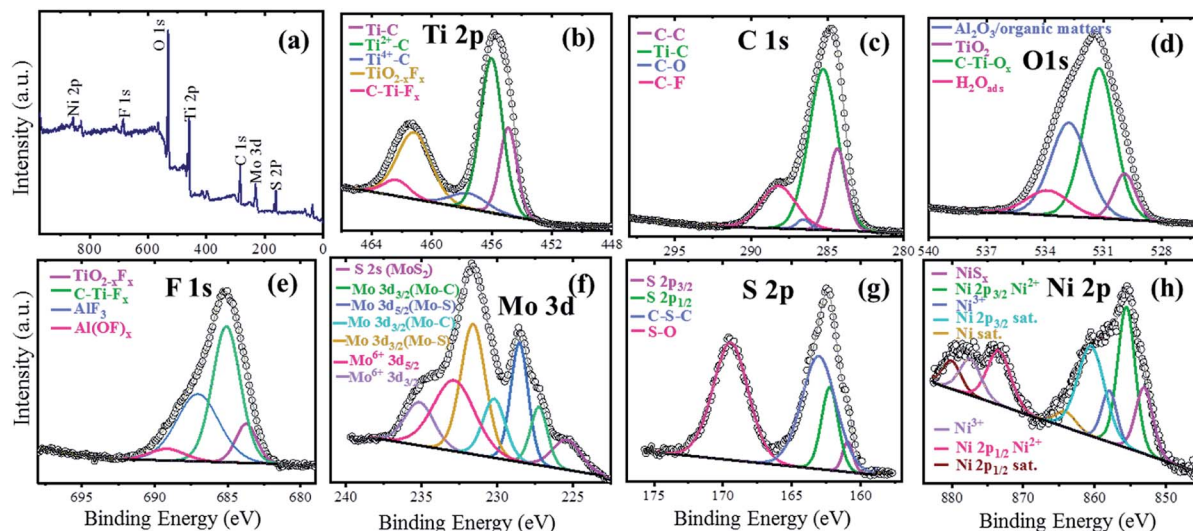


Fig. 4 XPS spectra of the NAMA-2 catalyst: full survey spectrum (a), and core level spectra of Ti 2p (b), C 1s (c), O 1s (d), F 1s (e), Mo 3d (f), S 2p (g), and Ni 2p (h).

The SEM image of the NAMA-2 catalyst revealed the surface morphology and homogeneous intercalation of the promoter with the MoS<sub>2</sub> nanosheets in the Ti<sub>3</sub>C<sub>2</sub>T<sub>x</sub> support, giving an accordion-like structure (Fig. 5a). The EDS spectrum of NAMA-2 confirmed the presence of elements Ti, Mo, S, Ni, and C, and firmly indicated the existence of NiO, MoS<sub>2</sub>, and Ti<sub>3</sub>C<sub>2</sub>T<sub>x</sub> (Fig. 5b). The distribution of Ni, Mo, S, Ti, C, and O elements in NAMA-2 (NiMoS<sub>2</sub>/Ti<sub>3</sub>C<sub>2</sub>T<sub>x</sub>) was confirmed by elemental mapping analysis (Fig. 5c), which also confirmed the uniform distribution of promoter and MoS<sub>2</sub> nanosheets on the surface

and in between the layers of MXene. Further confirmation of the MoS<sub>2</sub> nanosheets in the AMA-2 and NAMA-2 catalysts was given by the high-resolution transmission electron microscopy (HRTEM) images, as shown in Fig. 5d and e. The few monolayers of active MoS<sub>2</sub> formed a hierarchical structure and the layer-to-layer spacing on the MXene was found from the TEM images;<sup>42</sup> during the synthesis of the catalysts, 2D MoS<sub>2</sub> formed as layer-structured crystallite stacks or slabs. The average number of layers per slab and slab length per stack were determined from the HRTEM morphology.<sup>44,45</sup> The AMA-2

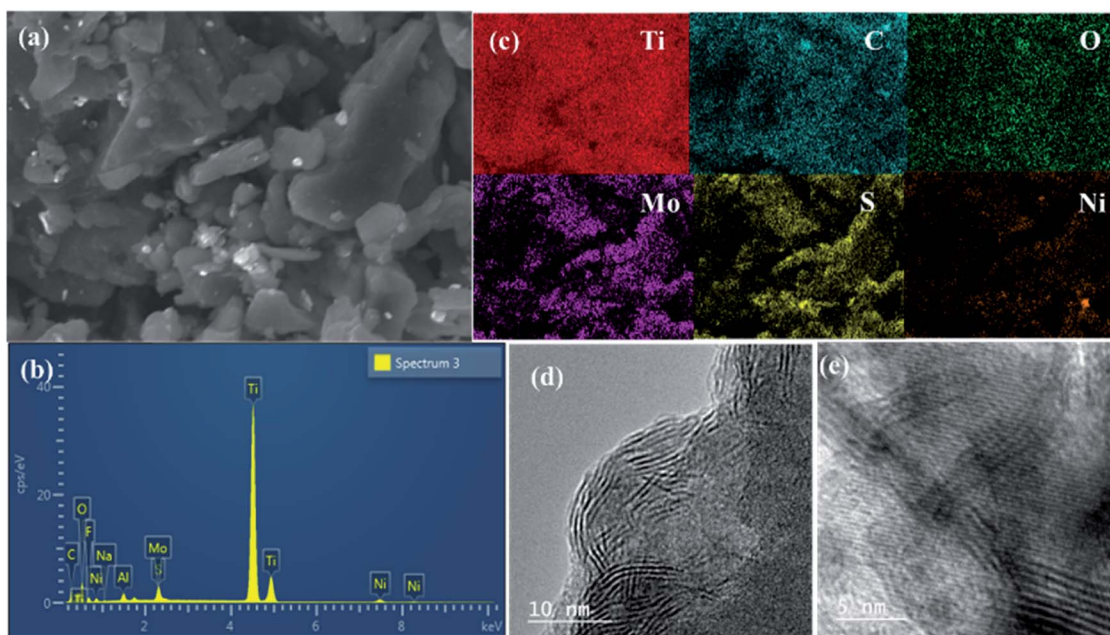


Fig. 5 The surface morphology and elemental distribution of the NAMA-2 catalyst: SEM image (a), EDS spectrum (b), and elemental mapping (c). HRTEM images of AMA-2 (d) and NAMA-2 (e).

(MoS<sub>2</sub>/MXene) catalysts displayed a higher slab number of about 4.2 layers, and length of 6.4 nm compared to NAMA-2 (Ni-MoS<sub>2</sub>/MXene) which showed 3.4 layers and a slab length of 3.7 nm. This significant morphology difference between the NAMA-2 and AMA-2 catalysts might be due to the intercalation of layered MoS<sub>2</sub> into MXene by the *in situ* thermal conversion process. Thus, the intercalation of 2D MoS<sub>2</sub> stacks between the MXene slabs could be associated with the enhanced HDS activity of the NAMA catalysts. Moreover, the data from the Raman spectroscopy supported the formation of few-layered MoS<sub>2</sub>, and indicated about 2–3 layers.

The H<sub>2</sub>-consumption of the prepared MoS<sub>2</sub>-based catalysts at a range of temperatures was obtained by temperature-programmed reduction (TPR) (Fig. 6). The heterostructured MoS<sub>2</sub>/Ti<sub>3</sub>C<sub>2</sub>T<sub>x</sub> (AMA-2) or NiMoS<sub>2</sub>/Ti<sub>3</sub>C<sub>2</sub>T<sub>x</sub> (NAMA-2) was placed in a quartz cell and pretreated at 150 °C in an Ar environment. A reducing gas containing 10% H<sub>2</sub> in Ar was introduced into the sample quartz tube at a constant flow rate over the pretreated catalyst with a constant heating ramp of 10 °C min<sup>-1</sup> up to 800 °C. The reduction of MoS<sub>2</sub> on the Ti<sub>3</sub>C<sub>2</sub>T<sub>x</sub> support was recorded based on H<sub>2</sub> consumption signals by a thermal conductivity detector. The reduction peaks of labile sulfur moieties on the surface of the MoS<sub>2</sub> supported catalysts (AMA and NAMA) were observed between around 200–800 °C. The AMA-2 signals were deconvoluted to five peaks located at 266, 412, 537, 608, and 693 °C, indicating sulfur dimers in the MoS<sub>2</sub> layers. The edge sulfur atoms connected either with one or two Mo atoms, corresponding to hydrogen consumption signals at 266 and 412 °C, and another sulfur atom strongly bonded with Mo was evident in the range of 500–700 °C. The reduction of the NAMA-2 catalyst showed lower temperature peaks at 221, 290, 383, 490, and 617 °C, and Mo deeply intercalated in the support was reduced at 740 °C. The appearance of these reduction peaks at lower temperatures for the NAMA catalyst could be ascribed to the different reduction states of Mo due to the promoter Ni<sup>2+</sup> placed next to Mo<sup>4+</sup> edge ions and coordinated with S<sup>2-</sup> ions, which reduced the strong interaction of Mo with the support;<sup>46</sup> this was also confirmed by XPS data (Fig. 4). The H<sub>2</sub>-TPR profiles of AMA and NAMA in the low-temperature region between around 250–300 °C indicated reduction either by excess sulfur, or by sulfur weakly bonded to the support surface.

Furthermore, the weakly attached sulfur atoms easily consumed H<sub>2</sub> on the surface of MoS<sub>2</sub> to form H<sub>2</sub>S, in a continuous process. Hence, these processes generated sulfur

vacancies in the transition sulfide, in turn, enhancing catalytic activity. Also, as supported by DFT theory,<sup>47</sup> physisorbed H<sub>2</sub> could split into separate atoms that adsorbed on adjacent sulfur dimers present in the catalyst, forming two adjacent S–Mo–SH surface groups. Then, an H atom was transferred from one S–Mo–SH to form SH–Mo–SH groups. The chemisorbed sulfur led to the desorption of H<sub>2</sub>S and the other sulfur atom associated with the same Mo edge. Thus, the NAMA-2 catalyst TPR curve indicated different reduction states: Mo<sup>6+</sup> to Mo<sup>4+</sup>, Mo<sup>4+</sup> to Mo<sup>0</sup>, and Ni<sup>2+</sup> to Ni<sup>0</sup>.<sup>48</sup>

### Hydrodesulfurization activity on the MoS<sub>2</sub>/Ti<sub>3</sub>C<sub>2</sub>T<sub>x</sub> and NiMoS<sub>2</sub>/Ti<sub>3</sub>C<sub>2</sub>T<sub>x</sub> catalysts

The few-layered MoS<sub>2</sub> decorated on Ti<sub>3</sub>C<sub>2</sub>T<sub>x</sub> was formulated with or without promoter (Ni) by impregnation with aqueous ATM alone, or with ATM and then the nickel salt, and subsequent calcination in an inert medium. The Mo loading varied, with samples prepared at 6, 9, and 12 wt% on Ti<sub>3</sub>C<sub>2</sub>T<sub>x</sub>. These were denoted AMA-1, AMA-2, and AMA-3, respectively in the absence of promoter. The NiMoS<sub>2</sub>/Ti<sub>3</sub>C<sub>2</sub>T<sub>x</sub> catalysts were intercalated by dispersion of promoter in ATM/Ti<sub>3</sub>C<sub>2</sub>T<sub>x</sub> before calcination, with molar ratios of Ni/(Ni + Mo) of 0.39, 0.30, and 0.24 for the 6, 9, and 12 wt% Mo loadings, denoted NAMA-1, NAMA-2, and NAMA-3, respectively. The sulfur removal activity of each catalyst was investigated by using thiophene. Also, the above-mentioned catalysts were sulfided using H<sub>2</sub>S (to give S-AMA and S-NAMA), and their HDS activities were compared with those of the parent catalysts (AMA and NAMA). Typically, HDS activity was studied by passing saturated thiophene vapor over a catalyst loaded in a fixed-bed reactor, and the flow of thiophene concentration was controlled through a saturator system maintained at 5 °C. The amount of thiophene vapor from the saturator was calculated as 3.75 mol% using the Antoine eqn (1). The reaction was carried out at 350 °C, and the reactor outlet was connected to an online refinery gas analyzer for quantifying the desulfurized products and unreacted thiophene.<sup>31</sup> The thiophene HDS reaction over AMA and NAMA catalysts showed the formation of significant amounts of C<sub>4</sub> hydrocarbons (butane and butenes) and considerable amounts of C<sub>1</sub>–C<sub>3</sub> hydrocarbons.

The HDS of thiophene was carried out in triplicate over the AMA and NAMA catalysts and the rate of thiophene conversion was determined by taking the average value for each catalyst. Fig. 7 shows the HDS rates of the AMA-1, AMA-2, and AMA-3 catalysts, which were 1.2, 2.27, and 1.9 mmol h<sup>-1</sup> g<sup>-1</sup>, respectively, while the conversion rates of the Ni-based NAMA-1, NAMA-2, and NAMA-3 catalysts were 3.5, 4.3, and 3.6 mmol h<sup>-1</sup> g<sup>-1</sup>, respectively. It has previously been reported that traditional Ni–MoS<sub>2</sub>/Al<sub>2</sub>O<sub>3</sub> exhibited HDS activity of about 2.5 mmol h<sup>-1</sup> g<sup>-1</sup>.<sup>49</sup> Thus, in comparison with the reported alumina catalysts, Ni–MoS<sub>2</sub> on Ti<sub>3</sub>C<sub>2</sub>T<sub>x</sub> showed higher HDS rates, which might be due to the synergistic effect of the 2D MoS<sub>2</sub> in 2D Ti<sub>3</sub>C<sub>2</sub>T<sub>x</sub> with the Ni promoter. Fig. 7 reveals that the HDS rates of the AMA and NAMA catalysts increased with increasing Mo loading up to 9 wt%, but upon a further increase in Mo loading, the activity decreased, which might be due to the

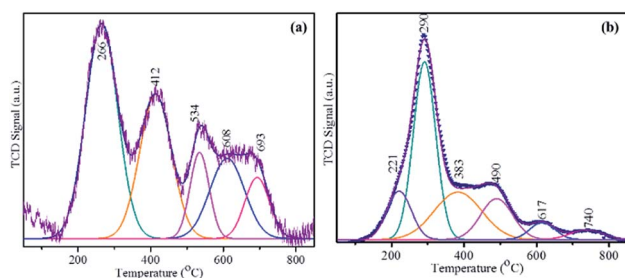


Fig. 6 H<sub>2</sub>-TPR curves of the AMA-2 and NAMA-2 catalysts.

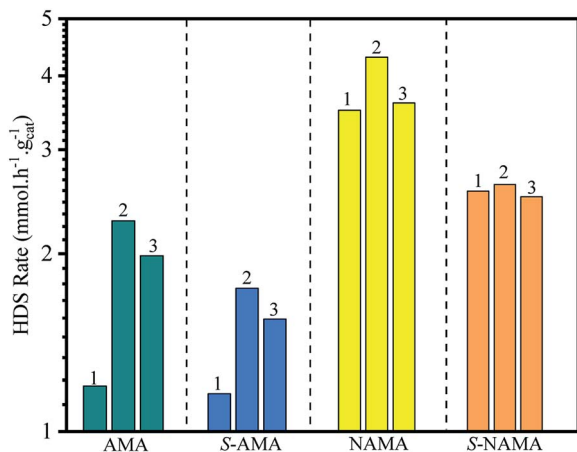


Fig. 7 The comparison of the HDS activity of AMA and NAMA catalysts, and the conventional H<sub>2</sub>S-treated AMA and NAMA catalysts.

nature of MoS<sub>2</sub> intercalated between the MXene layers. The 9 wt% Mo showed higher conversion rates compared to the other two concentrations, which might be due to the metal-support Ti<sub>3</sub>C<sub>2</sub>T<sub>x</sub> interactions, which also play a substantial role in the conversion rates; even when the Mo concentration was increased from 6 to 12% wt, a maximum conversion rate cut-off was achieved at 9 wt% Mo.<sup>50</sup> However, the NAMA catalysts showed higher conversion rates than the AMA catalysts due to the synergic effect between the Ni particles sited at the surface of the S-layers, and the layer edges of active MoS<sub>2</sub> sites which dominated on the surface of C–Ti–O. Further, the Raman spectra results illustrate that the frequency difference between the E<sub>2g</sub><sup>1</sup> and A<sub>1g</sub> modes in NAMA-3 was nearly 23 cm<sup>-1</sup>; the increase in the frequency difference could be attributed to the formation of close-packed multilayered MoS<sub>2</sub>. Thus, the formation of close-packed multilayered MoS<sub>2</sub> with higher Mo loading might result in the lower catalytic activity of AMA-3, and NAMA-3.

In addition, the HDS of thiophene was investigated with H<sub>2</sub>S/H<sub>2</sub>-treated S-AMA and S-NAMA catalysts. The AMA and NAMA catalysts exhibited about 20% higher catalytic activities than the H<sub>2</sub>S/H<sub>2</sub>-treated S-AMA and S-NAMA catalysts. When compared with a similar study of H<sub>2</sub>S-treated Co–MoS<sub>2</sub>/alumina catalysts derived from ATM,<sup>51</sup> the activity of NAMA-2 was about 7-fold higher than that of the H<sub>2</sub>S-treated Co–MoS<sub>2</sub>/alumina catalysts, due to the synergistic effect of Ni and MoS<sub>2</sub> between the Ti<sub>3</sub>C<sub>2</sub>T<sub>x</sub> slabs. Nevertheless, the decrease in HDS activity for the H<sub>2</sub>S/H<sub>2</sub>-treated S-AMA and S-NAMA catalysts might be due to inhibition of edge active MoS<sub>2</sub>.

The turnover frequency (TOF) for the HDS of thiophene on Ni–MoS<sub>2</sub>/MXene was calculated from the ratio between the HDS activity of each NAMA catalyst (mol g<sup>-1</sup> h<sup>-1</sup>) and the amount of Ni present in that NAMA catalyst (mol g<sup>-1</sup>).<sup>52</sup> Fig. 8 shows the TOF as a function of the Ni/(Ni + Mo) ratio for the NAMA and S-NAMA catalysts. The highest TOF value was achieved with a Ni/(Ni + Mo) ratio of 0.30 (NAMA-2) which exceeded the values for NAMA-3 (low Ni content) and NAMA-1 (high Ni content). This

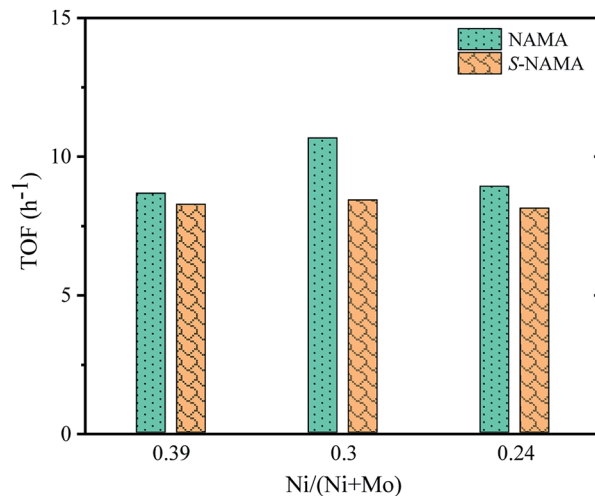


Fig. 8 TOF on Ni–MoS<sub>2</sub>/MXene catalysts as a function of promoter concentration.

confirmed that NAMA-2 was more intrinsically active compared to NAMA-1 and NAMA-3 due to the sintering of the active phase.

A number of products were obtained through the HDS of thiophene that were formed through various intermediates by hydrogenation of unsaturated carbon bonds and direct S removal from C–S bonds.<sup>47</sup> The MoS<sub>2</sub>-based catalysts undergo parallel HDS reactions: the hydrogenation (C=C bond) involves the π-electrons of the S-ring compound adsorbed on the MoS<sub>2</sub> layer, and direct S-removal (C–S bond) involves the exposed Mo ion and S vacancy site of chemisorbed S-atoms of thiophene *via* hydrogen transfer followed by sulfur elimination. These pathways involve different intermediates (dihydrothiophene, tetrahydrothiophene, and butadiene) and generate different products such as butenes (1-butene, *cis*-2-butene, *trans*-2-butene), butanes (*n*-butane, *i*-butane), and C<sub>1</sub>–C<sub>3</sub> hydrocarbons (methane, ethane, ethene, propane, propene).<sup>50</sup> The activities of the AMA and NAMA catalysts depended on the weakly bonded sulfur at the surface of the few-layered MoS<sub>2</sub> for the generation of H<sub>2</sub>S, which created sulfur vacancies that reduced the energy barrier and favored the hydrogenation reaction, enhancing the catalytic conversion rates.

Fig. 9 shows the average thiophene conversion by the synthesized (AMA and NAMA) and sulfided (S-AMA and S-NAMA) catalysts in terms of mol% per gram of catalyst at a particular time (5 h). The synthesized few-layered MoS<sub>2</sub>/Ti<sub>3</sub>C<sub>2</sub>T<sub>x</sub> catalysts revealed higher conversion than the H<sub>2</sub>S-sulfided catalysts because of the saturation of the active sites with surface carbon. The AMA catalysts displayed an appreciable thiophene conversion due to the presence of corner MoS<sub>2</sub> that helped to cleave C–S bonds, and edge MoS<sub>2</sub> that enabled hydrogenation of thiophene.<sup>7,53</sup> However, the Ni-promoted NAMA catalysts were more active for the dissociation of hydrogen molecules and their association with the evenly dispersed MoS<sub>2</sub> on the support which strengthened the MoS<sub>2</sub> hydrogen capacity. Furthermore, MoS<sub>2</sub> peaks were not noticed in the XRD patterns of the NAMA catalysts, which suggests that

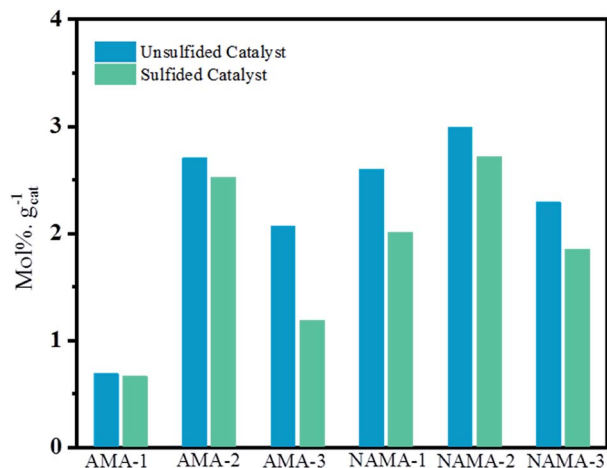


Fig. 9 Effect of sulfidation on few-layered MoS<sub>2</sub>/MXene catalysts for overall thiophene conversion.

the nanocrystalline MoS<sub>2</sub> and Ni were highly dispersed to form Ni–Mo–S structures. In other words, the thermal conversion of intercalated ATM and promoter precursor on Ti<sub>3</sub>C<sub>2</sub>T<sub>x</sub> in an inert medium favored the formation of an active Ni–Mo–S phase, and in turn, this decreased the formation of NiS<sub>x</sub> and NiO<sub>x</sub>, as confirmed by the XPS spectra. Thus, it is clear that the formation of the active Ni–Mo–S phase in the NAMA catalysts favored the high conversion of thiophene.

Fig. 10 shows the product distributions obtained on the AMA and NAMA catalysts and the corresponding sulfided catalysts (S-AMA and S-NAMA). The results reveal a declining trend in the formation of butenes and increasing proportion of butanes upon increasing Mo loading on the AMA catalysts, which favors the hydrogenation of thiophene; the conversion of low carbon products (C<sub>1</sub>–C<sub>3</sub>) remained the same at about 3–5% after completion of the HDS reaction. However, this change was not observed on the S-AMA catalysts due to the hidden edge MoS<sub>2</sub> sites and so the distribution of butenes, butanes, and C<sub>1</sub>–C<sub>3</sub>

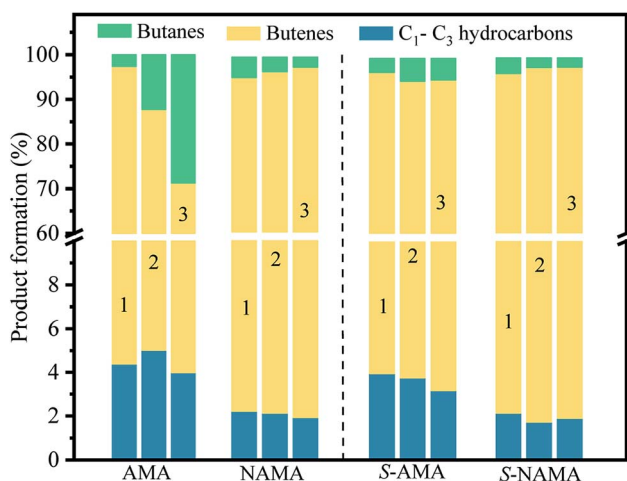


Fig. 10 The distribution of HDS products on the parent AMA and NAMA catalysts, and the sulfided S-AMA, and S-NAMA catalysts.

hydrocarbons corresponded to about ~92%, ~4%, and ~4%, respectively. On the other hand, the NAMA and S-NAMA catalysts favored butenes (~95% formation), while the formation of butanes and C<sub>1</sub>–C<sub>3</sub> hydrocarbons slightly diminished over S-NAMA compared to those on NAMA catalysts. The sulfidation process might convert the active Ni promoter to inactive NiS<sub>x</sub> on the surface of the S-NAMA catalysts, which could decrease the hydrogenation of thiophene, resulting in the lower C<sub>1</sub>–C<sub>3</sub> and butane contents.<sup>6,7</sup> Overall, it was observed that the NAMA catalysts gave about 98% of C<sub>4</sub> (butenes and butanes) and about 2% of C<sub>1</sub>–C<sub>3</sub> hydrocarbons. Thus, the aqueous ATM and 2D MXene (titanium carbide) offer a new opportunity for the formulation of a new generation of catalysts. Moreover, using ATM as the Mo precursor provides a better *in situ* approach than a conventional hazardous H<sub>2</sub>S sulfidation process.

## Conclusions

Few-layered MoS<sub>2</sub> with and without Ni-promoted Ti<sub>3</sub>C<sub>2</sub>T<sub>x</sub> (AMA and NAMA) catalysts were successfully prepared from the precursor ATM ((NH<sub>4</sub>)<sub>2</sub>MoS<sub>4</sub>) which was obtained in aqueous form by purging H<sub>2</sub>S through ammonium heptamolybdate. The AMA and NAMA catalysts were sulfided using H<sub>2</sub>S, to produce S-AMA and S-NAMA catalysts. The absence of MoS<sub>2</sub> peaks in the XRD patterns of the AMA catalysts indicated the formation of highly dispersed nanocrystalline MoS<sub>2</sub> on Ti<sub>3</sub>C<sub>2</sub>T<sub>x</sub>. The intercalation of MoS<sub>2</sub> and promoter between the layers of Ti<sub>3</sub>C<sub>2</sub>T<sub>x</sub> and the number of MoS<sub>2</sub> layers formed were confirmed from the textural properties of the catalysts and the active A<sub>g</sub><sup>1</sup> and E<sub>g</sub><sup>2</sup> Raman spectroscopy modes. HRTEM images and scanning electron microscopy coupled with energy dispersive X-ray spectroscopy (SEM-EDS) mapping revealed the catalyst surface morphology and elemental distribution. The electronic states of the elements on the surface of Ti<sub>3</sub>C<sub>2</sub>T<sub>x</sub> that catalyzed the thiophene HDS were established by XPS analysis. The kinetic parameters were established from the conversion rates, and the formation of C<sub>1</sub>–C<sub>3</sub>, and C<sub>4</sub> hydrocarbon products was quantified with GC. The overall reaction rate for HDS was higher for the NAMA than for the AMA catalysts due to the enhancement in rate provided by the promoter Ni. Furthermore, the prepared AMA and NAMA catalysts showed higher HDS rates than the corresponding sulfided catalysts because the H<sub>2</sub>S-sulfidation led to the poisoning of active MoS<sub>2</sub> sites. The product distribution showed higher C<sub>4</sub> (butane and butene) formation than C<sub>1</sub>–C<sub>3</sub> product formation on the layered MoS<sub>2</sub>-MXene catalysts. The NAMA-2 catalyst with the 0.30 molar ratio of Ni/(Ni + Mo) exhibited the highest HDS rate and showed significant selectivity for *n*-butane and butenes. XRD and XPS data indicated that the active Ni–Mo–S structure formed on Ti<sub>3</sub>C<sub>2</sub>T<sub>x</sub> for thiophene HDS through the hydrogenation and hydrogenolysis of C–S bonds. In summary, the epitaxial synthesis of HDS catalysts from ATM and 2D MXene provides an alternative route to conventional metal oxide sulfidation by H<sub>2</sub>S. Thus, the Ni-promoted few-layered MoS<sub>2</sub>/Ti<sub>3</sub>C<sub>2</sub>T<sub>x</sub> catalyst is a potential candidate for achieving an enhanced HDS rate in the clean fuel process.



## Conflicts of interest

There are no conflicts to declare.

## Acknowledgements

This work was supported through the Petroleum Research Center funded by the Kuwait Institute for Scientific Research (KISR).

## References

- 1 E. B. Fox, Z. W. Liu and Z. T. Liu, *Energy Fuels*, 2013, **27**, 6335–6338.
- 2 P. Sikarwar, V. Gosu and V. Subbaramaiah, *Rev. Chem. Eng.*, 2019, **35**, 669–705.
- 3 A. Stanislaus, A. Marafi and M. S. Rana, *Catal. Today*, 2010, **153**, 1–68.
- 4 A. Tanimu and K. Alhooshani, *Energy Fuels*, 2019, **33**, 2810–2838.
- 5 M. Breyse, P. Afanasiev, C. Geantet and M. Vrinat, *Catal. Today*, 2003, **86**, 5–16.
- 6 E. Furimsky, *Appl. Catal., A*, 2003, **240**, 1–28.
- 7 J. Jeon, Y. Park, S. Choi, J. Lee, S. S. Lim, B. H. Lee, Y. J. Song, J. H. Cho, Y. H. Jang and S. Lee, *ACS Nano*, 2018, **12**, 338–346.
- 8 B. Hinnemann, J. K. Nørskov and H. Topsøe, *J. Phys. Chem. B*, 2005, **109**, 2245–2253.
- 9 Y. Okamoto, *Catal. Today*, 1997, **39**, 45–59.
- 10 R. R. Chianelli, G. Berhault and B. Torres, *Catal. Today*, 2009, **147**, 275–286.
- 11 H. Topsøe, B. S. Clausen and F. E. Massoth, in *Catalysis*, Springer, 1996, pp. 1–269.
- 12 J. V. Lauritsen, S. Helveg, E. Laegsgaard, I. Stensgaard, B. S. Clausen, H. Topsøe and E. Besenbacher, *J. Catal.*, 2001, **197**, 1–5.
- 13 S. M. A. M. Bouwens, F. B. M. Vanzon, M. P. Vandijk, A. M. Vanderkraan, V. H. J. Debeer, J. A. R. Vanveen and D. C. Koningsberger, *J. Catal.*, 1994, **146**, 375–393.
- 14 A. I. Dugulan, J. A. R. van Veen and E. J. M. Hensen, *Appl. Catal., B*, 2013, **142**, 178–186.
- 15 Y. Aray and J. Rodriguez, *J. Mol. Catal. A: Chem.*, 2007, **265**, 32–41.
- 16 G. Alonso, G. Berhault and R. R. Chianelli, *Inorg. Chim. Acta*, 2001, **316**, 105–109.
- 17 K. K. Liu, W. J. Zhang, Y. H. Lee, Y. C. Lin, M. T. Chang, C. Su, C. S. Chang, H. Li, Y. M. Shi, H. Zhang, C. S. Lai and L. J. Li, *Nano Lett.*, 2012, **12**, 1538–1544.
- 18 M. A. Al-Daous, *Catal. Commun.*, 2015, **72**, 180–184.
- 19 L. Yang, X. Z. Wang, Y. Liu, Z. F. Yu, J. J. Liang, B. B. Chen, C. Shi, S. Tian, X. Li and J. S. Qiu, *Appl. Catal., B*, 2017, **200**, 211–221.
- 20 E. Puello-Polo, M. Ayala-G and J. L. Brito, *Catal. Commun.*, 2014, **53**, 9–14.
- 21 R. B. Levy and M. Boudart, *Science*, 1973, **181**, 547–549.
- 22 R. V. Mom, J. N. Louwen, J. W. M. Frenken and I. M. N. Groot, *Nat. Commun.*, 2019, **10**, 2546.
- 23 M. Naguib, V. N. Mochalin, M. W. Barsoum and Y. Gogotsi, *Adv. Mater.*, 2014, **26**, 992–1005.
- 24 B. Anasori, M. R. Lukatskaya and Y. Gogotsi, *Nat. Rev. Mater.*, 2017, **2**, 16098.
- 25 Y. Liu, H. Du, X. Zhang, Y. Yang, M. Gao and H. Pan, *Chem. Commun.*, 2016, **52**, 705–708.
- 26 N. Li, X. Z. Chen, W. J. Ong, D. R. MacFarlane, X. J. Zhao, A. K. Cheetham and C. H. Sun, *ACS Nano*, 2017, **11**, 10825–10833.
- 27 H. Liu, C. Y. Duan, C. H. Yang, W. Q. Shen, F. Wang and Z. F. Zhu, *Sens. Actuators, B*, 2015, **218**, 60–66.
- 28 Y. L. Ying, Y. Liu, X. Y. Wang, Y. Y. Mao, W. Cao, P. Hu and X. S. Peng, *ACS Appl. Mater. Interfaces*, 2015, **7**, 1795–1803.
- 29 L. Ding, Y. Y. Wei, L. B. Li, T. Zhang, H. H. Wang, J. Xue, L. X. Ding, S. Q. Wang, J. Caro and Y. Gogotsi, *Nat. Commun.*, 2018, **9**, 155.
- 30 M. Alhabeab, K. Maleski, B. Anasori, P. Lelyukh, L. Clark, S. Sin and Y. Gogotsi, *Chem. Mater.*, 2017, **29**, 7633–7644.
- 31 M. Vinoba, R. Navvamani and H. Al-Sheeha, *SN Appl. Sci.*, 2019, **1**, 340.
- 32 P. Rayo, A. Rodriguez-Hernandez, P. Torres-Mancera, J. A. D. Munoz, J. Ancheyta and R. G. de Leon, *Catal. Today*, 2018, **305**, 2–12.
- 33 B. S. Guo, J. Bai, Y. H. Li, S. Q. Xia and P. S. Ma, *Fluid Phase Equilib.*, 2013, **353**, 87–92.
- 34 M. Naguib, M. Kurtoglu, V. Presser, J. Lu, J. J. Niu, M. Heon, L. Hultman, Y. Gogotsi and M. W. Barsoum, *Adv. Mater.*, 2011, **23**, 4248–4253.
- 35 N. V. Tzenov and M. W. Barsoum, *J. Am. Ceram. Soc.*, 2000, **83**, 825–832.
- 36 J. F. Zhu, Y. Tang, C. H. Yang, F. Wang and M. J. Cao, *J. Electrochem. Soc.*, 2016, **163**, A785–A791.
- 37 B. Schönfeld, J. J. Huang and S. C. Moss, *Acta Crystallogr., Sect. B: Struct. Sci.*, 1983, **39**, 404–407.
- 38 N. H. Attanayake, S. C. Abeyweera, A. C. Thenuwara, B. Anasori, Y. Gogotsi, Y. G. Sun and D. R. Strongin, *J. Mater. Chem. A*, 2018, **6**, 16882–16889.
- 39 J. Kibsgaard, Z. B. Chen, B. N. Reinecke and T. F. Jaramillo, *Nat. Mater.*, 2012, **11**, 963–969.
- 40 C. Lee, H. Yan, L. E. Brus, T. F. Heinz, J. Hone and S. Ryu, *ACS Nano*, 2010, **4**, 2695–2700.
- 41 J. P. Liu, Y. Z. Liu, D. Y. Xu, Y. Z. Zhu, W. C. Peng, Y. Li, F. B. Zhang and X. B. Fan, *Appl. Catal., B*, 2019, **241**, 89–94.
- 42 C. J. Shen, L. B. Wang, A. G. Zhou, H. Zhang, Z. H. Chen, Q. K. Hu and G. Qin, *J. Electrochem. Soc.*, 2017, **164**, A2654–A2659.
- 43 N. X. Hao, Y. Wei, J. L. Wang, Z. W. Wang, Z. H. Zhu, S. L. Zhao, M. Han and X. Huang, *RSC Adv.*, 2018, **8**, 20576–20584.
- 44 A. López-Benítez, A. Guevara-Lara and G. Berhault, *ACS Catal.*, 2019, **9**, 6711–6727.
- 45 J. Liang, M. Wu, P. Wei, J. Zhao, H. Huang, C. Li, Y. Lu, Y. Liu and C. Liu, *J. Catal.*, 2018, **358**, 155–167.
- 46 P. Castillo-Villalon, J. Ramirez and J. A. Vargas-Luciano, *J. Catal.*, 2014, **320**, 127–136.

- 47 C. Guo, T. Zhang, M. Niu, S. F. Cao, S. X. Wei, Z. J. Wang, W. Y. Guo, X. Q. Lu and C. M. L. Wu, *Mol. Catal.*, 2019, **463**, 67–76.
- 48 W. K. Lai, W. J. Song, L. Q. Pang, Z. F. Wu, N. Zheng, J. J. Li, J. B. Zheng, X. D. Yi and W. P. Fang, *J. Catal.*, 2013, **303**, 80–91.
- 49 Y. Okamoto, K. Ochiai, M. Kawano and T. Kubota, *J. Catal.*, 2004, **222**, 143–151.
- 50 M. J. Girgis and B. C. Gates, *Ind. Eng. Chem. Res.*, 1991, **30**, 2021–2058.
- 51 A. Nogueira, R. Znaiguia, D. Uzio, P. Afanasiev and G. Berhault, *Appl. Catal., A*, 2012, **429–430**, 92–105.
- 52 Y. Okamoto, A. Kato, Usman, N. Rinaldi, T. Fujikawa, H. Koshika, I. Hiromitsu and T. Kubota, *J. Catal.*, 2009, **265**, 216–228.
- 53 G. Berhault, A. Mehta, A. C. Pavel, J. Yang, L. Rendon, M. J. Yácaman, L. C. Araiza, A. D. Moller and R. R. Chianelli, *J. Catal.*, 2001, **198**, 9–19.