

Severe central obesity or diabetes can replace weight loss in the detection of frailty in obese younger elderly – a preliminary study

Assaf Buch¹⁻³
 Lital Keinan-Boker^{4,5}
 Ofer Kis¹
 Eli Carmeli^{1,6}
 Elena Izkhakov^{1,2}
 Maya Ish-Shalom^{1,2}
 Yitshal Berner^{2,7}
 Gabi Shefer^{1,2}
 Yonit Marcus^{1,2}
 Naftali Stern^{1,2}

¹The Institute of Endocrinology, Metabolism and Hypertension, Tel-Aviv Sourasky Medical Center, Tel Aviv, Israel; ²The Sackler Faculty of Medicine Tel Aviv University, Tel Aviv, Israel; ³Robert H Smith Faculty of Agriculture, Food and Environment, The Hebrew University of Jerusalem, Rehovot, Israel; ⁴School of Public Health, University of Haifa, Haifa, Israel; ⁵Israel Center for Disease Control, Israel Ministry of Health, Ramat Gan, Israel; ⁶The Department of Physical Therapy, University of Haifa, Haifa, Israel; ⁷Meir Medical Center, Kfar Saba, Israel

Correspondence: Assaf Buch
 The Institute of Endocrinology
 Metabolism and Hypertension,
 Tel-Aviv Sourasky Medical Center,
 6 Weizmann St, Tel Aviv 64239, Israel
 Tel +972 3 697 3732
 Fax +972 3 697 4578
 Email buchasaf@gmail.com

Purpose: Unwanted weight loss is one of the established criteria for the diagnosis of frailty. However, the relevance of this criterion to detect frailty in obese older adults has not been assessed. In particular, with the exception of malignancy, unwanted weight loss is not commonly seen in older obese subjects. Therefore, we tested the possibility that some obesity phenotypes and/or diabetes might be more useful in the detection of frailty in this setting.

Patients and methods: A preliminary cross-sectional study of 50 consecutive subjects was conducted at The Institute of Endocrinology, Metabolism and Hypertension, Tel-Aviv Sourasky Medical Center. Inclusion criteria were: young elderly (aged 65–75 years), with general and/or abdominal obesity, without cancer. Frailty was assessed directly using the Fried model, the five-item fatigue, resistance, ambulation, illnesses, and loss of weight (FRAIL) scale. Eventually, in the assessment of frailty, the weight loss criterion was replaced by one or several of obesity/diabetes-related variables each time: severity of obesity by body mass index, waist circumference (and their interaction), body fat, and diabetes. The receiver operating characteristic curves for functional impairment indices were plotted to compare the usefulness of the frailty accepted and adjusted models.

Results: The prevalence of frailty and pre-frailty in this cohort were 7/50 (14%) and 27/50 (54%), respectively, but unwanted weight loss was seen in three subjects (6%) only. The level of abdominal obesity had the strongest correlation with functional score ($r=0.292$, $P<0.05$). Frailty models which included either severe abdominal obesity or diabetes in lieu of unwanted weight loss had good sensitivity rates per each frailty score as compared with the original Fried model.

Conclusion: For detecting and/or screening for the frailty syndrome in obese young elderly, the level of abdominal obesity or diabetes may provide a useful marker.

Keywords: abdominal obesity, anthropometrics, older adults, functional level, unwanted weight loss

Introduction

The increase in the elderly population is linked to a rising prevalence of sarcopenia¹ and frailty,² two of the most common and debilitating health conditions afflicting old age. Presently, both the disorders are also associated with overweight and/or obesity and not only with underweight.^{1,3-6} The functional profile of the “fat and frail” population⁷ is apparently different from that of the better recognized, classical phenotype seen in frail underweight older adults, as they may have higher risk for metabolic impairment (diabetes and metabolic syndrome) and may exhibit a significantly elevated rate of death.^{5,8}

For the detection of frailty, Fried’s criteria presently comprises one of the most widely accepted diagnostic tools.² This scoring model is based on the identification

through direct assessment of the following features: low hand grip strength, low 4 m average walking speed, low caloric expenditure on physical activity, self-reporting of extreme fatigue or low functionality, and a spontaneous reduction of at least 4.5 kg in the past year. A prefrail state entails the fulfillment of at least one criterion, whereas the co-presence of three or more criteria defines frailty.⁹

However, whether Fried's criteria are applicable to obese elderly is yet to be validated. Because Fried's feature of recent weight loss is strongly linked with under/malnutrition¹⁰ (the least prevalent feature in elderly subjects⁹), some measure of obesity per se or any of its morbid sequels might be more suitable for the detection of frailty in this subpopulation. Also, as unintentional weight loss is a marker for malnutrition or disease (mostly malignancy), it is reasonable to assume that unwanted weight loss may potentially be replaced by measures of adiposity, as they reflect the other side of the nutrition spectrum – overnutrition (especially when no malignancy is prevalent).

To get a better understanding of this issue, we recruited an outpatient clinic-based sample of overweight/obese older (65–75 years) subjects in whom the validity of Fried's criteria for diagnosing frailty was compared to modified models of functionality, such that non-intentional weight loss would be replaced by some obesity-related variables.^{11–14} We a priori chose variables that were already shown to be frailty-related: waist circumference (WC),^{15–17} body mass index (BMI),^{8,17,18} percent fat (% fat),^{19–21} and the presence of diabetes.^{4,22} We included diabetes in our criteria, since 1) the prevalence of diabetes rises with age and obesity;^{23,24} 2) diabetes has been shown to accelerate the loss of muscle mass and function in older adults,²⁵ and increases functional limitations in older adults,²⁶ owing to insulin resistance, inflammation, hyperglycemia, and advanced glycation end products (AGEs).⁴ We hypothesized that higher degree of abdominal obesity would be the best criterion to replace weight reduction using validity assessment since abdominal obesity was repeatedly shown to be associated with frailty more than other measures of obesity.^{15–17}

Patients and methods

Population and sampling

The study took place at the Institute of Endocrinology, Metabolism, and Hypertension (IEMH), Tel-Aviv Sourasky Medical Center (TASMC). This was a non-probability sample composed of patients aged 65–75 years visiting the various outpatient clinics in the IEMH (eg, endocrinology, osteoporosis, diabetes, and metabolic syndrome clinics) and affiliated

community clinics, who were offered by their physician to participate in the study. The study was approved by the institutional review board of TASMC, and signed informed consent was obtained from all the participants. We selected only younger elderly (ie, the age group of 65–75 years) because this age range may present a therapeutic window for the remaining years of life and because older subjects were more likely to have severe comorbidities.

Assessment of eligibility

Inclusion criteria: patients aged 65–75 years, obese (BMI >30 kg/m² and/or WC ≥102 cm for men and ≥88 cm for women) who were able to walk independently either with or without an assisting device (cane or walker). **Exclusion criteria:** cognitive impairment as defined by the referring physician; recent use of steroid agents (≤6 months); uncorrected endocrinopathy (eg, primary hypothyroidism); known and active malignancy (past malignancy of >1 year was allowed); diagnosed with liver disease other than hepatosteatosis; renal impairment with eGFR <45 cc/mL; recent (≤6 months) stroke, myocardial infarction or unstable angina; New York Heart Association Class 2 or higher congestive heart failure; and a fall during the past 12 months with an associated fracture. Screening for potential subjects was based on the medical reports generated at and obtained from the IEMH.

Study flow and protocol

Health status and functional abilities were examined using a standardized protocol and questionnaire.^{27–30} Eligible subjects were asked to provide a recent medical summary from their primary physician (including list of diagnoses) and recent blood test results (<1 year), including CBC, glucose, and HbA1c; lipid renal, electrolyte, and liver function panels, etc. The study began in April 2016, and recruitment was completed by June 2016. Since this is a preliminary study, we a priori decided to recruit 50 male and female subjects.

Data collection and definition – main exposure variables

Frailty assessment and screening

Fried phenotype model as described in detail elsewhere⁹ is based on low hand grip strength, low 4 m average walking speed, low caloric expenditure on physical activity, self-reporting of extreme fatigue or low functionality, and a spontaneous reduction of at least 4.5 kg in the past year. The five-item FRAIL scale¹² included the following five components: fatigue, resistance, ambulation, comorbidity, and loss of weight. In both the tools,

frailty scores ranged from 0 to 5 (ie, 1 point for each component; 0=best score, 5=worst score) and were further categorized into frail (3–5), pre-frail (1–2), and robust (0) (Table S1).

Anthropometric data

All measurements were carried out twice, and the average was then calculated, according to a standardized protocol and included standing height and weight (using an analog scale suitable for weighing up to 130 kg, with accuracy of 0.5 kg), WC (measured around the umbilicus), and % fat/lean mass (obtained by way of electrical impedance body composition analyzer [BF-350; TANITA, Tokyo, Japan]). To increase the accuracy of the body composition measurements, participants were instructed to refrain from heavy exertion and alcoholic beverages intake within the preceding 24 hours and to eat a light meal ~3 hours before their meeting. We reviewed the literature for suggested cutoffs of anthropometric variables for higher risk of mortality and disability (as potential outcomes of frailty). The cutoffs searched for were WC,^{17,31–33} BMI,^{17,34,35–37} and % body fat.^{35,36} Interaction of high BMI and high WC was also examined, since WC is an independent and good predictor of total mortality, particularly among overweight and obese adults, and may have prognostic value with respect to mortality and frailty risk, beyond that of BMI per se.^{16,17} Eventually, we used the 75th percentile as the cutoff point because of the high obesity-prone selectivity of our population: all participants had high levels of abdominal obesity, particularly females. Following the footsteps of Fried et al,⁹ which defined the upper quartiles of various frailty criteria as indicative of frailty, we used the upper quartiles of obesity measures to replace the non-intentional weight loss criterion, so as to preserve the overall structure of the

original Fried's model. Finally, because of the novelty of our hypothesis, and since specific obesity cutoffs for the incidence of functional limitations in obese elderly are yet to be determined, we used quartiles (Box 1).

Physical function tests

The subjects were also examined using standardized protocols of the following tests: sit to stand 30 seconds (STS 30),²⁹ 2 minutes walk test,²⁸ and leg extension³⁰ (Supplementary materials).

The presence of comorbidities

This was evaluated by the combination of self-reported standardized questionnaire and information obtained from the medical summaries provided by the subject, as well as the records at the IEMH. Occasionally, not all diagnoses are documented in the medical notes. Comorbidity was defined by the presence of four or more of the following: chronic medical conditions – hypertension, coronary heart disease (eg, history of myocardial infarct), cerebrovascular disease (stroke or transient ischemic attack), chronic kidney disease, diabetes, asthma disease, glaucoma and/or cataract, unbalanced dyslipidemia (observed by blood test results), and osteoporosis.

Data collection: main outcome

Frailty may be considered as a pre-disability state,^{11,12} and hence, disability may be an outcome of frailty.^{12,14} Therefore, the presence of disability (as detected in standard questionnaires) is often used for the validation of frailty. We used the Comprehensive Functional Assessment Questionnaire (CFAQ) to assess physical function state by questions

Box 1 Suggested variables considered as a replacement for the weight loss criterion in the Fried Model

New potential variables

1. Severe obesity as defined by waist circumference

Rationale: Abdominal obesity is associated with frailty and its outcomes (eg, functional impairment, higher mortality rate); is linked to insulin-resistance and higher inflammatory state, which are all mechanistically associated with frailty and sarcopenia.

Cutoff: The cutoff for the definition of severe obesity is the highest quartile (75th) for each gender (for males, 119.6 cm; for females, 132 cm). Since our study population was selectively chosen based on the presence of obesity, the usually applied higher cutoff for the general population was selected based on statistical reasoning. Females and males were analyzed separately.

2. Severe obesity as defined by % body fat

Rationale: The proportion of body fat increases with age in parallel to the decrease in lean mass, which is at the core of sarcopenia and frailty.

Cutoff: The selected cut-off is based on the highest quartile (75th) for each gender (for males, 35.5%; for females, 47.9%), to keep unity in cutoffs chosen for analysis. Females and males were analyzed separately.

3. Severe obesity as defined by BMI

Rationale: BMI is the most commonly used measure of obesity which is related to higher risk for frailty and its outcomes such as disability and mortality.

Cutoff: The cutoff chosen for BMI-based definition of severe obesity in this study is the highest quartile (75th) (for both genders: >38.5 kg/m²) and is selected here to keep unity in cutoffs chosen for analysis. The cutoff is within the range of hazardous levels of obesity (BMI >35 kg/m²).

Abbreviation: BMI, body mass index.

on activities of daily living (ADL)²⁷ as recently utilized in several reports.^{38–40} Each of the nine questions in the questionnaire had an answer score of 0–4. A score of “0” indicates that the activity was not performed unrelated to health problems, whereas the higher the score from 1 to 4, the higher the difficulty associated with the specific activity. Answers in each of the nine questions in the functional questionnaire were summed to a total score ranged from 0 up to 36 (representing the highest functional impairment).

Data analysis – preliminary study

Analysis was performed using the SPSS program (version 24). *P*-values were compared to the value of ≤ 0.05 . Sample size is determined as 50 subjects for this study and has been chosen with no pre-assumptions because this is a preliminary study. Continuous variables are presented as mean \pm SD, as well as by range. The CFAQ scoring was validated using the Timed Up and Go test (in which ≥ 12 seconds indicated a higher risk of falling).²⁹ The area under the receiver operating characteristic curve (area under the curve [AUC]) was 0.85 ($P=0.003$). The score generated from the questionnaire with the validity was ≥ 16 (specificity 83.7%, sensitivity 81.4%; data not shown). Eventually, we defined functional impairment as any score >16 , (~ 16), based on: 1) statistical reasoning (highest quartile of the derived scores); 2) the distribution of the scores recorded in the study’s sample which was clearly clustered in a “tri-modal” fashion such that the achieved scores fell within the following ranges: 9–16 vs 17–20 vs 25–27.

In the direct assessment of frailty, we used a modified Fried model;⁹ in which the 4 m walk test was dichotomized (ie, >4 seconds considered as frail) according to the widely used five-item FRAIL scale.² Unwanted weight loss was self-reported, whereas the other components of the Fried model were maintained (Supplementary materials). The presence of these components was summed up to a total frailty score with a maximal value of five (representing the highest frailty state). Since only seven subjects (14%) were defined as frail based on this score, we merged them with the 27 subjects (54%) that were defined as pre-frail and referred to this group as frail-prone (FP) subjects.

Following a normal distribution test, an appropriate univariate analysis was conducted to test the difference between the FP and the non-frailty prone (NFP) groups. Analyses were also stratified by sex. We then introduced several evidence-based variables into the model, each replacing the weight loss criterion, and the analyses were subsequently repeated for each “corrected” model. The variables were: WC, BMI, % body fat (each dichotomized by the highest quartile vs all others), and the presence (vs absence) of

diabetes (as detailed in Box1). To test the relevance of these new criteria against – the traditional – Fried’s criteria and functional status, we used the Spearman correlations with the Likert-based scale of the functional level questions.

Each time, the new adjusted frailty models included one of the proposed variables as a replacement for the original weight-reduction criterion. Using the AUC, we estimated the accuracy of each model. The AUC ranges from 0.5 to 1.0, where 1.0 indicated perfect sensitivity and specificity. An index test AUC of at least 0.8 is considered to indicate good discriminative ability.⁴¹ The sensitivity (the probability to correctly classify the FP as positive) and specificity (the probability to correctly classify the NFP as negative) were calculated under different cutoffs. We a priori defined that a fair validity will be considered as $\geq 75\%$ (sensitivity and specificity) with respect to functional impairment.

Lastly, using multivariate linear regressions, we examined the relation between the frailty and function state, adjusted for several potential confounders (eg, education level, age, and others as detailed in the “Results” section). These confounders were selected based on existing literature as well as their distribution in the stratified exposure variables (FP vs NFP) and the stratified outcome variable (functional impairment vs no impairment).

Results

Subject characteristics

The study included 50 subjects with an average age of 69 ± 3 years and 60% were female. According to the selected criteria (the Fried model with the modification described in the “Methods” section), 34 of the subjects were categorized as FP, of whom seven were frail, whereas 16 were categorized as robust (NFP) (Table 1A). The classification as FP was clearly dominated by a low activity level (88%). Other components of frailty were low grip strength (32%), slow gait (26%), and self-report of exhaustion (24%).

Notably, unwanted weight loss was seen in only three subjects (9% of the FP and 6% of the entire cohort). Interestingly, when the five-item FRAIL screening tool was applied, the rate of FP among women was considerably higher (by 24%, all of whom were classified as pre-frail) (Table 1B).

Exploring the role of anthropometric and metabolic variables as new candidates to define frailty

Significant spontaneous weight loss is uncommon in obese young elderly, as reflected in its low rate in our study population, seen in only 3/50 subjects (6%). The correlations between

Table 1 (A) Participants' health characteristics with stratification to frailty status by Fried phenotype model (exposure) and (B) participants' frailty and disability characteristics with stratification to frailty status by Fried phenotype model (exposure)

	Total sample (n=50)		Not-prone for frailty (NFP) (n=16)		Frailty prone (FP) (n=34; 7 of them frail)				
	All	Females (n=30)	Males (n=20)	All	Females (n=10)	Males (n=6)	All	Females (n=20)	Males (n=14)
(A) Health characteristics									
Age (years)	69±3 (63-75)	68.7±3 (63-75)	69.4±3.4 (65-75)	68.43±2.7 (65-74.8)	67.9±2.1 (65-71)	69.2±3.6 (65.2-74.8)	69.3±3.4 (63-75)	69.1±3.4 (63-75)	69.5±3.4 (65-75)
BMI (kg/m ²)	35±6 (25-51)	36.6±6.3 (26.8-51.4)	31.9±3.6 ^a (25-39.4)	33.7±5.8 (24.5-49.1)	35.5±6.3 (26.8-49.1)	30.7±3.6 (24.6-34.1)	35.2±5.8 (26.8-51.4)	37.1±6.4 (27.5-51.4)	32.4±3.6 ^a (26.8-39.4)
WC (cm)	118±14 (87-147)	119.9±16.3 (87-146.5)	114.8±10.7 (99-145)	110.6±10 (93.5-137.5)	111.6±11 (93.5-137.5)	109±8.7 (99-118.7)	121.3±15.1 ^b (87-146.5)	124.1±17.2 ^b (87-146.5)	117.3±10.8 (104-145)
Fat (% of body weight)	39±8 (23-54)	44.6±4.5 (37.7-54.3)	31.2±4.5 ^a (23.3-37.4)	39±7.7 (24.3-54.3)	43.5±4.9 (37.7-54.3)	31.6±5.2 (24.3-37.3)	39.4±8.2 ^a (23.3-51.7)	45.2±4.3 (38.2-51.7)	31.1±4.4 (23.3-37.4)
General obesity (%; mean BMI ± SD) ^c	78; 37±5	87; 38±6	65; 34±2	75; 36±5	80; 38±5	67; 33±1	79; 37±5	90; 38±6	64; 35±3
Abdominal obesity (%) ^c	96; 119±14	97; 121±15	95; 116±10	94; 111±10	100; 112±11	83; 111±8	97; 122±14	95; 126±15	100; 117±11
Prevalent morbidities (partial list)									
% diabetes (n)	52 (26)	43 (13)	65 (13)	44 (7)	30 (3)	67 (4)	56 (19)	50 (10)	64 (9)
% hypertension (n)	70 (35)	70 (21)	70 (14)	56 (9)	70 (7)	33 (2)	76 (26)	70 (14)	86 (12) ^b
% osteoporosis (n)	24 (12)	27 (8)	20 (4)	31 (5)	40 (4)	17 (1)	21 (7)	20 (4)	21 (3)
% co-morbidity (≥4 conditions) (n) ^d	24 (12)	20 (6)	30 (6)	12 (2)	0	33 (2)	29 (10)	30 (6)	29 (4)
Metabolic syndrome (%; ≥3 components)	90	90	90	81	80	83	94	95	93
HbA1c (%; n=41)	6.7±1.2 (5-11)	6.6±1.3 (5-11)	6.7±1.1 (5-10)	6.56±1.3 (5-10)	6±0.8 (5-8)	7.6±1.3 ^a (6-10)	6.7±1.2 (5-11)	6.9±1.4 (6-11)	6.4±0.9 (5-8)
(B) Frailty status									
Fried model									
Physical activity energy expenditure (Kcal per week)	518±757 (0-2,755)	504.9±755 (0-2,755)	538.4±777 (0-2,297)	1,300±658 (400-2,775)	1,296±689 (400-2,755)	1,307±668 (500-2,298)	150.2±465 (0-1,966)	109±390 ^e (0-1,704)	209±566 ^e (0-1,966)
Frail by physical activity (%)	60 (30)	60 (18)	60 (12)	0	0	0	88 (30)	90 (18)	86 (12)
Hand grip (average of both hands; kg)	31±8 (13-46)	25.3±5.6 (12.8-36.3)	38.2±5.2 ^f (29.6-46.1)	32.1±6.2 (23.6-44)	28.4±3.4 (23.6-36.3)	38.2±4.8 (32.05-44.05)	29.8±9.2 (12.8-46.1)	23.8±6 ^e (12.8-34.6)	38.2±5.6 ^f (29.6-46.1)
Frail by grip strength (%)	22 (11)	27 (8)	15 (3)	0	0	0	32 (11)	40 (8)	21 (3)
4 m walk (seconds)	3.4±0.8 (2.1-5.7)	3.6±0.9 (2.4-5.7)	3.2±0.5 (2.1-4.1)	3±0.4 (2.1-3.6)	3±0.3 (2.6-3.6)	2.9±0.5 (2.1-3.5)	3.6±0.8 ^e (2.3-5.7)	3.9±0.9 ^e (2.3-5.7)	3.3±0.5 ^f (2.5-4.1)
Frail by walk time (%)	18 (9)	27 (8)	5 (1)	0	0	0	26 (9)	40 (8)	7 (1)
% unintentional weight loss	6 (3)	10 (3)	0	0	0	0	9 (3)	15 (3)	0
% exhaustion	16 (8)	17 (5)	15 (3)	0	0	0	24 (8)	25 (5)	21 (3)

(Continued)

Table 1 (Continued)

	Total sample (n=50)		Not-prone for frailty (NFP) (n=16)		Frailty prone (FP) (n=34; 7 of them frail)	
	All	Females (n=30)	Males (n=20)	All	Females (n=10)	Males (n=6)
% frail-prone (pre-frail + frail) by the 5 questions screening tool (% frail)	50 (16% frail)	60 (20% frail)	35 (10% frail)	12 (0 frail)	20 (0 frail)	0
Functional assessment						
Physical function tests						
Sit to stand 30 seconds (STS 30) (repetitions)	11±3 (0-16)	10.4±3.4 (0-16)	11.8±3.3 (0-16)	12.4±1.7 (9-16)	11.6±1.5 (9-13)	12.8±1.8 (11-16)
2 minute walk test (meters)	164.6±40.8 (58-251)	152.4±38.5 (58-202)	182.2±38.5 (107-251)	184.2±24.1 (142-234)	176.8±19.2 (142-202)	196.5±28.0 (167-234)
Leg extension (average of both legs; kg)	27±9 (7.5-49.5)	22.7±7.5 (7.5-38)	33.3±7.3 ^f (20.5-49.5)	29.5±8 (18-44.5)	26.6±6.5 (18-35.5)	34.2±8.4 (20.5-44.5)
Functional level (reported by patient)						
Functional score (0-36) ^g	13±5 (9-27)	13.9±5 (9-27)	12.05±4 (9-21)	10.3±1.3 (9-14)	10.7±1.5 (9-14)	9.7±0.8 (9-11)

Notes: Data are shown as mean ± SD for continuous variables (range) or % for nominal/categorical variables. ^aMales vs females in the same group (all population, not prone and frailty-prone groups) significantly different ($P<0.05$). ^bMales vs males, females vs females, and all vs all between groups (not prone and frailty-prone groups) significantly different ($P<0.05$). ^cGeneral obesity was defined using BMI levels ≥ 30 kg/m² and abdominal obesity was defined as waist circumference ≥ 102 cm for men and ≥ 88 cm for women. ^dThe presence of four or more of the following conditions: coronary heart disease/congestive heart failure/stroke/chronic kidney disease/asthma/diabetes/hypertension/osteoporosis/glaucoma and/or cataract/unbalanced dyslipidemia. ^eMales vs males, females vs females, and all vs all between groups (not prone and frailty-prone groups) significantly different ($P<0.05$). ^fMales vs females in the same group (all population, not prone and frailty-prone groups) significantly different ($P<0.05$). ^gCFAQ to assess physical function state by questions on activities of daily living (nine questions in total). Each had an answer score of 0-4. A score of "0" indicates that the activity was not performed unrelated to health problems. Increasing score from 1 to 4 reflects greater difficulty associated with the specific activity. Answers in each of the nine questions in the functional questionnaire were summed to a total score ranging from 0 (no impairment at all) up to 36 (the highest functional impairment). χ^2 test for categorical variables and t-test (or Mann-Whitney) for continuous variables.

Abbreviations: BMI, body mass index; WC, waist circumference; CFAQ, Comprehensive Functional Assessment Questionnaire.

the variables introduced as an alternative to unwanted weight loss, and the components of the Fried model, and the functional score are presented in Table 2. As shown, among these anthropometric/metabolic variables, WC was most prominently related to frailty and functional state. Still, the correlation of the anthropometric/metabolic variables with the Fried's components were insufficient to suggest interdependence ($r < 0.8$), such that their introduction as new independent variables appears justified. Among the anthropometric/metabolic variables used, WC was also the only variable that was significantly and positively correlated with the functional score ($r = 0.296$; $P < 0.05$).

Testing the new adjusted models for frailty using functional impairment as an outcome

Reclassification of the subjects with the adjusted models (in which the weight loss criterion was replaced) resulted in a sizeable increase in the rate of frailty. In the model using high BMI (75th percentile and higher), the proportion of frail subjects increased from 14% to 24% (1.71-fold) (Table S2). In women, the most visible increase in frailty rate by reclassification occurred in the models that included diabetes and high body fat. In males a higher frailty was observed when weight loss was replaced by high WC, high BMI, and high WC and BMI (two-fold increase in all alternative models as listed) (Table S2).

The altered models, in which weight loss was replaced by the anthropometric/metabolic variables, afforded acceptable specificity as they all identified the most normally functioning

individuals correctly (defined by the original Fried's model; using a frailty score cutoff of 3; Table S2). Using the cutoffs to differentiate between FP (pre-frail+frail) and NFP, all the frailty models (Fried's and the five-item FRAIL scale as well as the new adjusted models) had the same sensitivity (100%; Table S2; Figure 1), whereas specificity was highest in the five-item FRAIL scale (76.5%; Table S2). A strict cutoff differentiating the frail (≥ 3 scores) from the pre-frail and non-frail group, showed the same sensitivity in all models (62.5%); with exception of the five-item FRAIL scale, which resulted in a lower sensitivity (50%; Table S2; Figure 1). From a clinical perspective, sensitivity appears more critical than specificity in the detection of frailty and disability. In this regard, a clear advantage was seen when the weight loss criterion was replaced by diabetes or high WC, which for each selected cutoff level showed a higher or at least the same sensitivity as seen with the Fried model vis-à-vis functionality (Figure 1).

Exploring the accuracy of the models

Evidence supporting the accuracy of the new models can be seen in Table S3, where correlations of specific components of the functional level assessed in the questionnaire were tested against the frailty scores in each model and its specific components. In Fried's model, the strongest and most consistent predictor of functional impairment was the 4 m walk test. WC level was the strongest and most consistent anthropometric factor correlated with functional impairment. Moreover, the overall correlations (as well as question-specific correlations)

Table 2 Spearman correlations coefficients of anthropometric and metabolic variables and functional tests

Frailty and functional variables	% body fat (n=50)	BMI (kg/m ²) (n=50)	Waist circumference (cm) (n=50)	% HbA1C (n=41)
Fried phenotype model				
4m walk (average; sec)	0.212	0.275	0.291*	0.096
Hand grip (average of both hands; kg)	-0.659**	-0.348*	-0.23	0.003 (F: -0.505*)
PA energy expenditure (Kcal per week)	-0.066	-0.084	-0.337*	-0.147 (F: -0.523*)
Frailty total scores by Fried (0–5)	0.174	0.212	0.464** (F: 0.453*)	0.127 (M: -0.546* ; F: 0.533**)
Other functional tests				
Leg extension (average of both legs; Kg)	-0.438**	-0.23	-0.099	0.203
Sit to stand 30 secs (STS 30; repetitions)	-0.247 (n=46)	-0.172 (n=46)	-0.348* (n=46) (F: -0.464*)	-0.334* (n=37) (F: -0.673**)
2 min walk test (meters)	-0.439** (F: -0.505**)	-0.544** (F: -0.505**)	-0.570** (F: -0.729**)	-0.23 (F: -0.528*)
Functional Assessment Questionnaire				
Functional score (0–36) ¹	0.251	0.263	0.296*	0.231

Notes: Correlations between anthropometric and metabolic characteristics, and functional outcomes (Spearman's rho). Correlations for gender added only when significant. Bold numbers indicate significant results in the level of the whole sample. *Correlation is significant at the 0.05 level (two-tailed). **Correlation is significant at the 0.01 level (two-tailed). ¹As indicated within Table 1B.

Abbreviations: BMI, body mass index; F, females; M, males; PA, physical activity.

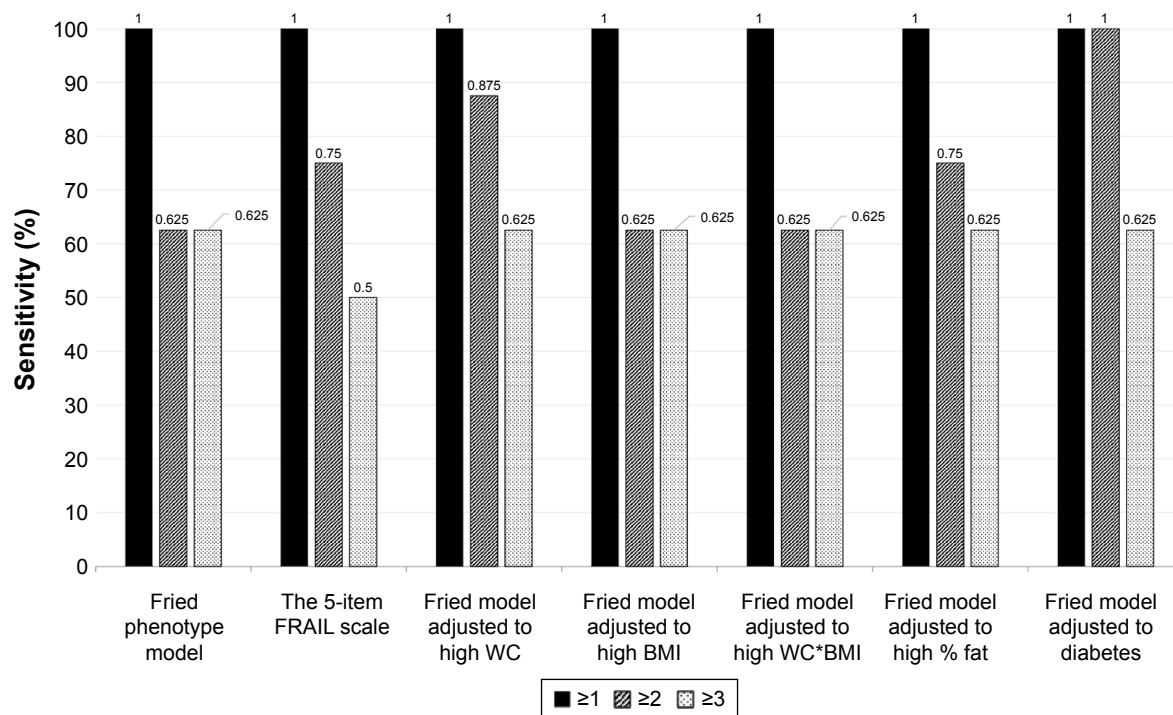


Figure 1 Sensitivity rates (%) of the different models per each cutoff to differentiate the frailty states.

Notes: Sensitivity rates stratified by the different model per each cutoff to differentiate the frailty state levels. Models were validated against functional impairment (as represented by the functional activities of daily living questionnaire used in our study with any score > 16).

Abbreviations: BMI, body mass index; FRAIL, fatigue, resistance, ambulation, illnesses, and loss of weight; WC, waist circumference.

were strongest and most consistent using the modified Fried criteria, in which weight loss was replaced by high WC or diabetes (overall Spearman correlations with total score of functional level: 0.587, 0.49; $P < 0.01$, respectively).

The relation of frailty-models to the functional level

Several explanatory variables differed among outcome groups (Table 3). The rate of comorbidity (%) was 3.74

Table 3 Participants' general and frailty characteristics with stratification to functional status by the comprehensive functional assessment questionnaire (outcome)

	No functional impairment (score ≤ 16) (n=42)	Functional impairment (score > 16) (n=8)	P-value between groups
Age (years)	69.0±3.0	69.1±4.2	0.929
Gender (% females) (n)	59.5 (25)	62.5 (5)	0.875
Marital status (% not married) ^a (n)	38 (16)	50 (4)	0.476
Economic status (% report of average or not so good) ^b (n)	26 (11)	50 (4)	0.178
Highest educational level (% with lower than academic level) ^c (n)	26 (11)	12.5 (1)	0.498
Smoking (% current smokers) ^d (n)	7 (3)	12.5 (1)	0.609
% comorbidity (≥4 conditions) ^e (n)	16.6 (7)	62.5 (5)	0.005
% frail-prone by Fried (% frail)	62 (4.7)	100 (62.5)	0.034
Frailty by Fried (scores)	0.9±0.88	2.88±1.64	0.011
% frail-prone by Fried + WC (% frail)	64 (12)	100 (62.5)	0.043
Frailty by Fried + WC (scores)	1.10±1.08	3±1.31	0.004
% frail-prone by Fried + diabetes (% frail)	78.5 (9.5)	100 (62.5)	0.148
Frailty by Fried + diabetes (scores)	1.36±1.03	3.38±1.3	0.003

Notes: ^a"Married" vs merged groups of "not-married" (single/divorced/widowed = 1). ^bBased on the following question: "How do you define your economic status" (1 – not so good; 2 – average; 3 – good; 4 – excellent). "Good or excellent" vs merged groups of "not" (average/not so good = 1). ^cBased on the following question: "What is your highest educational level" (1 – elementary; 2 – high school; 3 – academic). "Academic" vs merged groups of "not-academic" (elementary/high school = 1). ^d"Non- or past smokers" (merged) vs current smokers (=1). ^eThe presence of four or more of the following conditions: coronary heart disease/congestive heart failure/stroke/chronic kidney disease/asthma/diabetes/hypertension/osteoporosis/glaucoma and/or cataract/unbalanced dyslipidemia. Data are shown as mean ± SD for continuous variables or % for nominal/categorical variables. χ^2 test for categorical variables and t-test (or Mann-Whitney) for continuous variables.

Abbreviation: WC, waist circumference.

higher in subjects with functional impairment as compared to subjects without functional impairment ($P=0.005$). All frailty scores and proportions differed between groups (Table 3). The frailty scores in each model remained significantly and

highly related to the functional scores. However, the number of comorbidities (Figure 2A) was the most strongly associated explanatory variable in Fried’s model as well as in the models in which weight loss was replaced by either WC or

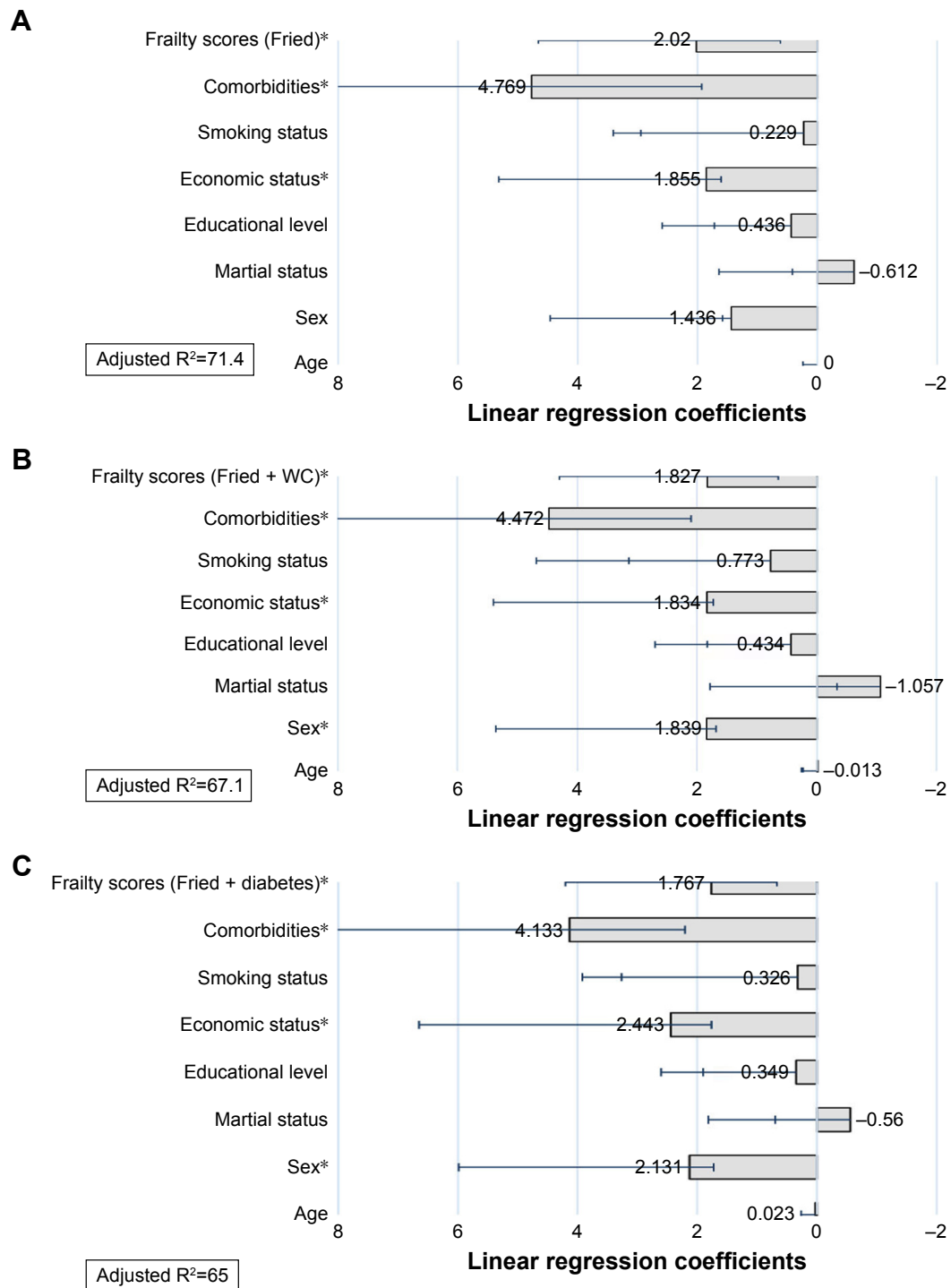


Figure 2 The adjusted correlation between frailty scores (by the three detective models) to function scores using linear regression. **Notes:** Stepwise multiple linear regression testing the correlations of different variables (explanatory variables) with functional impairment (outcome). The independent role of frailty (as presented by the three most valid models) was assessed. **(A)** Includes all variables and Fried frailty model; **(B)** Includes all variables and frailty model including severe abdominal obesity instead of weight loss; **(C)** Includes all variables and frailty model including diabetes instead of weight loss. Bars represent the adjusted coefficients and lines represent the confidence intervals. *Correlation is significant at the 0.05 level (two-tailed). **Abbreviation:** WC, waist circumference.

diabetes (Figure 2B and C). Female sex explained significantly the functional level only in the modified models, but not in the Fried model (Figure 2B and C).

Discussion

This preliminary study has been assessed for the first time the pertinence of accepted and common frailty criteria applied specifically in obese younger elderly subjects. In our survey, characterized by the common presence of obesity and/or diabetes, the Fried criteria⁹ as well as the five-item FRAIL scale screening tool² were able to detect functional impairment, an accepted outcome in this age section of the population. Notably, non-intentional weight loss, one of the Fried criteria, appeared uncommon in our cohort, which agrees with our clinical experience and a recent analysis of the last national representative survey of the Israeli elderly population.⁴² The relative rarity of unwanted weight loss in the present study (~6%)⁴² is also in line with its rate in an Israeli general population sample study of community-dwelling elderly with obesity (~5%).⁴³ In fact, weight gain in the latter study was twice as common as the rate of weight loss in subjects free of current or recent malignancy. Because obesity is so common in subjects over the age of 65 years, and in view of the growing evidence that obesity in older subjects is linked to sarcopenia,⁵ we examined herein the possibility that the degree obesity levels and the presence of diabetes might serve as alternative variables to non-intentional weight loss in this age group.

The most significant and novel contribution of this study is that altering the accepted Fried model in obese younger elderly population by replacing the weight loss criterion with severe abdominal obesity or diabetes presence is both feasible and valid. When all cutoffs for determining FP states were examined, the level of abdominal obesity and/or the presence of diabetes showed the highest sensitivity in detecting functional impairment, compared to the original Fried model as well as to the altered models using other anthropometric/metabolic variables (level of % body fat, level of BMI, and level of high BMI–high WC; Figure 1). We have also shown here for the first time, to our knowledge, that in obese younger elderly subjects (aged 65–75 years), the anthropometric/metabolic factor most strongly associated with the common frailty components (in Fried model) and with functional impairment is the level of abdominal obesity (Tables 2 and S1). Of note is the observation that the frailty-disability link did not change due to this alterations in the Fried model: traditional explanatory variables for functional impairment were kept unchanged when the frailty model was

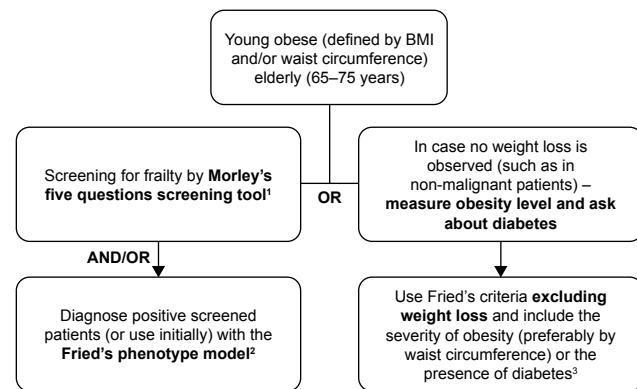


Figure 3 Optional screening and/or diagnosing flow for obese younger elderly subjects.

Notes: Suggested scheme to diagnose or screen for frailty in young (65–75 years) obese elderly – step by step: 1. The five-item fatigue, resistance, ambulation, illnesses, and loss of weight (FRAIL) scale by Morley et al¹²; 2. The Fried phenotype model for frailty⁹; and 3. High levels of WC (severe abdominal obesity) chosen for this study were based on the 75th percentile: for males, 119.6 cm and for females, 132 cm.

Abbreviations: WC, waist circumference; BMI, body mass index.

altered by the introduction of high level of WC or diabetes as replacement for weight loss (Figure 2).

While existing literature has discussed in depth the role of BMI vs WC in the frailty state,^{15–17} we suggest that in the direct assessment of obese young elderly and severity of abdominal obesity or diabetes may be included in the frailty model itself. A screening flow sheet for the diagnosis of frailty in obese young elderly is presented in Figure 3. Mechanistically, centralized obesity and diabetes may be more valuable to predict frailty and its outcomes (such as functional impairment) as it may reflect or correlate with multiple potentially disabling processes such as inflammation and insulin resistance.⁵ Diabetes in particular is of growing interest regarding its relationship with frailty/sarcopenia and functional impairment, for example, through “anabolic-resistance.”⁴⁴

Although we used a selective sample of apparently homogenous subjects, our findings are concordant with reports that frailty and functional impairment co-segregate with factors such as economic status and comorbidities.^{9,11,14,45} Female gender was significantly and independently associated with functional impairment only in the adjusted models (coefficients of 1.8–2.5). Caution should be made in interpreting this finding due to the possibility of residual confounding and their higher levels of obesity than males (unlike in the general population), all of which may be due to selection/volunteer bias of females in studies and in our unit in particular.

Interestingly, the 5-item FRAIL scale screening tool² showed relatively high sensitivity in the total study population and in particular with female subjects (using cut-offs ≥ 1 scores and >2 scores). This may reflect its subjective nature which is also the case for the functional report. Whereas previous studies

have shown that this tool is highly predictive and detective for functional outcomes,⁴⁶ not focusing on obese older patients. The higher sensitivity in women may be partially explained by their potentially higher self-awareness and higher tendency to report difficulties particularly when obesity is present.⁴⁷

The observation in the present preliminary study indicating that the weight reduction criterion in the Fried model can be safely replaced by the presence of severe abdominal obesity or diabetes cannot be generalized at the present but might instigate further research in a representative sample. If present, weight loss should be viewed as an important factor, even in the obese as it is clearly associated with increased mortality risk in frail, nursing home residents.⁴⁸ On the other hand, as obesity becomes a more prevalent phenomenon, obesity-related features should not be overlooked in the context of frailty detection and classification.

An important limitation of this study is that it is a highly selective group with respect to age and source of recruitment. The subjects recruited for the preliminary study tended to present a lower level of function and higher presence of frailty compared to a sample of community-dwelling younger elderly (16% vs 12.6% and 14% vs 8.4%, respectively).⁴⁹ This may be attributed to the hospital setting of the preliminary study population. A second limitation of our report is that it is a cross-sectional study, such that causality may not be assumed. Finally, the small sample size of our study comprises an additional limitation, as the potential effects of high heterogeneity (eg, BMI ranged from 25 to 51 kg/m²) cannot be adjusted for by stratification.

Conclusion

In the consecutive group of obese younger elderly subjects, the inclusion of severe abdominal obesity (75th percentile by sex) or the presence of diabetes in lieu of the traditional trait of unwanted weight loss allowed detection of functional limitations and yielded a slightly higher sensitivity (per same cutoff) and AUC. Therefore, for the detection of frailty in obese younger elderly in the absence of spontaneous weight reduction, severe abdominal obesity or diabetes may comprise a legitimate criterion. These findings need to be examined in larger scale studies to verify their accuracy and validity.

Clinical implications

1. In obese young elderly subjects without active cancer, screening for frailty, besides weight-reduction, should include severe abdominal obesity or diabetes.
2. Suggested criteria for severe abdominal obesity are 120/132 cm (male/female, respectively) for outpatient clinic attendants.

Acknowledgments

This work was performed in partial fulfillment of the requirements for a PhD degree by Assaf Buch at the Sackler Faculty of Medicine, Tel Aviv University, Israel. The authors wish to acknowledge the support of all the physicians in the Institute of Endocrinology, Metabolism, and Hypertension who helped in recruitment of the patients. This work was supported by the Sagol Foundation for the Metabolic Syndrome Research Center.^{3,4}

Disclosure

The authors report no conflicts of interest in this work.

References

1. Cruz-Jentoft AJ, Baeyens JP, Bauer JM. Sarcopenia: European consensus on definition and diagnosis. *Age Ageing*. 2010;39(4):412–423.
2. Morley JE, Vellas B, van Kan GA, et al. Frailty consensus: a call to action. *J Am Med Dir Assoc*. 2013;14(6):392–397.
3. Osher E, Stern N. Obesity in Elderly Subjects. *Diabetes Care*. 2009;32(Suppl 2):S398–S402.
4. Morley JE, Malmstrom TK, Rodriguez-Mañas L, Sinclair AJ. Frailty, sarcopenia and diabetes. *J Am Med Dir Assoc*. 2014;15(12):853–859.
5. Buch A, Carmeli E, Boker LK, et al. Muscle function and fat content in relation to sarcopenia, obesity and frailty of old age – an overview. *Exp Gerontol*. 2016;76:25–32.
6. Walston J, Hadley EC, Ferrucci L, et al. Research agenda for frailty in older adults: toward a better understanding of physiology and etiology: summary from the American Geriatrics Society/National Institute on Aging Research Conference on Frailty in Older Adults. *J Am Geriatr Soc*. 2006;54(6):991–1001.
7. Porter Starr KN, McDonald SR, Weidner JA, Bales CW. Challenges in the management of geriatric obesity in high risk populations. *Nutrients*. 2016;8(5):262.
8. Lee Y, Kim J, Han ES, et al. Frailty and body mass index as predictors of 3-year mortality in older adults living in the community. *Gerontology*. 2014;60(6):475–482.
9. Fried LP, Tangen CM, Walston J, et al. Frailty in older adults: evidence for a phenotype. *J Gerontol A Biol Sci Med Sci*. 2001;56(3):M146–M157.
10. Alibhai SM, Greenwood C, Payette H. An approach to the management of unintentional weight loss in elderly people. *CMAJ*. 2005;172(6):773–780.
11. Morley JE, Perry HM, Miller DK. Editorial: Something about frailty. *J Gerontol A Biol Sci Med Sci*. 2002;57(11):M698–M704.
12. Morley JE, Malmstrom TK, Miller DK. A simple frailty questionnaire (FRAIL) predicts outcomes in middle aged African Americans. *J Nutr Health Aging*. 2012;16(7):601–608.
13. Abellan van Kan G, Rolland YM, Morley JE, Vellas B. Frailty: toward a clinical definition. *J Am Med Dir Assoc*. 2008;9(2):71–72.
14. Vermeulen J, Neyens JC, van Rossum E, Spreuwenberg MD, de Witte LP. Predicting ADL disability in community-dwelling elderly people using physical frailty indicators: a systematic review. *BMC Geriatr*. 2011;11:33.
15. Guallar-Castillón P, Sagardui-Villamor J, Banegas JR, et al. Waist circumference as a predictor of disability among older adults. *Obesity*. 2007;15(1):233–233.
16. García-Esquinas E, José García-García F, León-Muñoz LM, et al. Obesity, fat distribution, and risk of frailty in two population-based cohorts of older adults in Spain. *Obesity*. 2015;23(4):847–855.
17. Staiano AE, Reeder BA, Elliott S, et al. Body mass index versus waist circumference as predictors of mortality in Canadian adults. *Int J Obes*. 2012;36(11):1450–1454.

18. Hardy R, Cooper R, Aihie Sayer A, et al. Body mass index, muscle strength and physical performance in older adults from eight cohort studies: the HALCyon programme. *PLoS One*. 2013;8(2):e56483.
19. Waters DL, van Kan GA, Cesari M, et al. Gender specific associations between frailty and body composition. *J Frailty Aging*. 2012;1(1):18–23.
20. Hirani V, Naganathan V, Blyth F, et al. Longitudinal associations between body composition, sarcopenic obesity and outcomes of frailty, disability, institutionalisation and mortality in community-dwelling older men: The Concord Health and Ageing in Men Project. *Age Ageing*. 2017;46(3):413–420.
21. Falsarella GR, Gasparotto LP, Barcelos CC, et al. Body composition as a frailty marker for the elderly community. *Clin Interv Aging*. 2015;10:1661–1667.
22. García-Esquinas E, Graciani A, Guallar-Castillón P, et al. Diabetes and risk of frailty and its potential mechanisms: a prospective cohort study of older adults. *J Am Med Dir Assoc*. 2015;16(9):748–754.
23. Ford ES, Williamson DF, Liu S. Weight change and diabetes incidence: findings from a national cohort of US adults. *Am J Epidemiol*. 1997;146(3):214–222.
24. Wild S, Roglic G, Green A, Sicree R, King H. Global prevalence of diabetes: estimates for the year 2000 and projections for 2030. *Diabetes Care*. 2004;27(5):1047–1053.
25. Park SW, Goodpaster BH, Lee JS, et al. Excessive loss of skeletal muscle mass in older adults with type 2 diabetes. *Diabetes Care*. 2009;32(11):1993–1997.
26. Lee RH, Pieper CF, Colón-Emeric C. Association between clinical fracture risk and type 2 diabetes mellitus among older women is mediated in part by functional impairments. *J Am Geriatr Soc*. 2015;63(8):1546–1551.
27. Jette AM, Cleary PD. Assessment disability. *Phys Ther*. 1987;67(12):1854–1859.
28. The NIH Toolbox Motor Battery [Internet]. The National Institutes of Health. [cited 2015 Oct 17]. Available from: <http://www.health-measures.net/explore-measurement-systems/nih-toolbox/intro-to-nih-toolbox/motor>. Accessed January 13, 2017.
29. STEADI Materials for Health Care Providers [Internet]. Centers for Disease Control and Prevention [cited 2015 Oct 17]. Available from: <https://www.cdc.gov/steadi/materials.html#tabs-1205242-7>. Accessed January 23, 2017.
30. Andrews AW, Thomas MW, Bohannon RW. Normative values for isometric muscle force measurements obtained with hand-held dynamometers. *Phys Ther*. 1996;76(3):248–259.
31. Cerhan JR, Moore SC, Jacobs EJ, et al. A pooled analysis of waist circumference and mortality in 650,000 adults. *Mayo Clin Proc*. 2014;89(3):335–345.
32. Flegal KM, Graubard BI. Estimates of excess deaths associated with body mass index and other anthropometric variables. *Am J Clin Nutr*. 2009;89(4):1213–1219.
33. Zaslavsky O, Rillamas-Sun E, Lacroix AZ, et al. Association between anthropometric measures and long-term survival in frail older women: observations from the Women's Health Initiative Study. *J Am Geriatr Soc*. 2016;64(2):277–284.
34. Winter JE, Macinnis RJ, Wattanapenpaiboon N, Nowson CA. BMI and all-cause mortality in older adults: a meta-analysis. *Am J Clin Nutr*. 2014;99(4):875–890.
35. Padwal R, Leslie WD, Lix LM, Majumdar SR. Relationship among body fat percentage, body mass index, and all-cause mortality. *Ann Intern Med*. 2016;164(8):532.
36. Graf CE, Karsegard VL, Spoerri A, et al. Body composition and all-cause mortality in subjects older than 65 y. *Am J Clin Nutr*. 2015;101(4):760–767.
37. Flegal KM, Kit BK, Orpana H, Graubard BI. Association of all-cause mortality with overweight and obesity using standard body mass index categories. *JAMA*. 2013;309(1):71–82.
38. Villareal DT, Aguirre L, Gurney AB, et al. Aerobic or resistance exercise, or both, in dieting obese older adults. *N Engl J Med*. 2017;376(20):1943–1955.
39. Napoli N, Shah K, Waters DL, et al. Effect of weight loss, exercise, or both on cognition and quality of life in obese older adults. *Am J Clin Nutr*. 2014;100(1):189–198.
40. Villareal DT, Banks M, Siener C, Sinacore DR, Klein S, et al. Physical frailty and body composition in obese elderly men and women. *Obes Res*. 2004;12(6):913–920.
41. Murphy JM, Berwick DM, Weinstein MC, Borus JF, Budman SH, Klerman GL. Performance of screening and diagnostic tests: application of receiver operating characteristic analysis. *Arch Gen Psychiatry*. 1987;44(6):550–555.
42. Buch A, Carmeli E, Shefer G, et al. Cognitive impairment and the association between frailty and functional deficits are linked to abdominal obesity in the elderly. *Maturitas*. 2018;114:46–53.
43. National Health and Nutrition Survey Ages 65 and over 2005–2006- part 1 [Internet]. The Israeli Ministry of Health. Available from: http://www.health.gov.il/PublicationsFiles/Mabat_2005-2006-a.pdf. Accessed August 17, 2017.
44. Cleasby ME, Jamieson PM, Atherton PJ. Insulin resistance and sarcopenia: mechanistic links between common co-morbidities. *J Endocrinol*. 2016;229(2):R67–R81.
45. Alvarado BE, Zunzunegui M-V, Béland F, Bamvita J-M. Life course social and health conditions linked to frailty in Latin American older men and women. *J Gerontol A Biol Sci Med Sci*. 2008;63(12):1399–1406.
46. Woo J, Yu R, Wong M, et al. Frailty screening in the community using the FRAIL scale. *J Am Med Dir Assoc*. 2015;16(5):412–419.
47. Davison KK, Ford ES, Cogswell ME, Dietz WH. Percentage of body fat and body mass index are associated with mobility limitations in people aged 70 and older from NHANES III. *J Am Geriatr Soc*. 2002;50(11):1802–1809.
48. Pizzato S, Sergi G, Bolzetta F, et al. Effect of weight loss on mortality in overweight and obese nursing home residents during a 5-year follow-up. *Eur J Clin Nutr*. 2015;69(10):1113–1118.
49. Buch A, Keinan-Boker L, Berner Y, Carmeli E, Goldsmith R, Stern N. Estimated frailty prevalence among Israeli elderly – results from a cross sectional national survey. *Isr J Health Policy Res*. 2018;7(1):18.

Clinical Interventions in Aging

Publish your work in this journal

Clinical Interventions in Aging is an international, peer-reviewed journal focusing on evidence-based reports on the value or lack thereof of treatments intended to prevent or delay the onset of maladaptive correlates of aging in human beings. This journal is indexed on PubMed Central, MedLine,

CAS, Scopus and the Elsevier Bibliographic databases. The manuscript management system is completely online and includes a very quick and fair peer-review system, which is all easy to use. Visit <http://www.dovepress.com/testimonials.php> to read real quotes from published authors.

Submit your manuscript here: <http://www.dovepress.com/clinical-interventions-in-aging-journal>

Dovepress