







## STANDARD ARTICLE

# Successful nutritional control of scratching and clinical signs associated with adverse food reaction: A randomized controlled COSCAD'18 adherent clinical trial in dogs in the United States

James L. Weemhoff<sup>1</sup>  | Jennifer M. MacLeay<sup>1</sup>  | John Brejda<sup>2</sup>  |  
Heidi Schiefelbein<sup>1</sup>  | Susan M. Wernimont<sup>1</sup>  | Kathy L. Gross<sup>1</sup> 

<sup>1</sup>Pet Nutrition Center, Hill's Pet Nutrition, Inc, Topeka, Kansas 66616

<sup>2</sup>Alpha Statistics, Lincoln, Nebraska

## Correspondence

James L. Weemhoff, Pet Nutrition Center,  
Hill's Pet Nutrition, Inc, 1035 NE 43rd St.,  
Topeka, KS 6661, USA.  
Email: james\_weemhoff@hillspet.com

## Funding information

Hill's Pet Nutrition

## Abstract

**Background:** Adverse reactions to food are a common dermatological condition in dogs, requiring nutritional intervention using a novel or hydrolysate protein-based food.

**Objective:** To evaluate a therapeutic food containing egg and phytonutrients in dogs with food allergies using an activity monitor and core outcome set for canine atopic dermatitis (COSCAD'18) guidelines and in a controlled double-masked, multicenter, prospective clinical trial.

**Animals:** Adult dogs with a history of adverse food reaction as diagnosed by a food elimination trial were recruited from general practices.

**Methods:** After a 21-day baseline period, dogs were randomized to test or positive control (hydrolyzed protein) food for 21 days. Owner (pruritus visual analog score [PVAS], coat quality, food acceptance, and satisfaction) and veterinarian (canine atopic dermatitis lesion index [CADLI], physical examination) assessments were completed on days 0, 21, and 42. Dogs wore a collar-mounted activity monitor to record scratching and shaking behavior throughout the study. Statistical analysis included within-group comparison to baseline and between-group comparison at study end using a significance threshold of  $\alpha = 0.05$ .

**Results:** At the end of the treatment period, all results were similar between groups for CADLI, PVAS, owner satisfaction, activity, and questionnaire data. Scores for hair

**Abbreviations:** AICC, corrected Akaike information criterion; BFI, body fat index; BIC, Bayesian information criterion; CADESI, canine atopic dermatitis extent and severity index; CADLI, canine atopic dermatitis lesion index; CAFR, canine adverse reaction to food; CBC, complete blood count; CI, confidence interval; COSCAD'18, 2018 core outcome set for canine atopic dermatitis; GI, gastrointestinal; OGATE, owner global assessment of treatment efficacy; PCF, positive control food; PCFB, period change from baseline; PVAS, pruritus visual analog score; SD, standard deviation; TTF, therapeutic test food.

This is an open access article under the terms of the Creative Commons Attribution License, which permits use, distribution and reproduction in any medium, provided the original work is properly cited.

© 2021 Hills pet Nutrition Inc. Journal of Veterinary Internal Medicine published by Wiley Periodicals LLC on behalf of American College of Veterinary Internal Medicine.

dullness, brittleness, amount of dandruff, feces quality, and food acceptance were positive and not statistically different between groups.

**Conclusions and Clinical Importance:** The therapeutic test food was well-accepted and efficacious in managing signs of adverse reactions to food compared to baseline as well as compared to the positive control food.

#### KEYWORDS

activity monitor, canine adverse food reactions, egg, novel protein, pruritus

## 1 | INTRODUCTION

Canine adverse food reaction (CAFR) accounts for about 10% of dogs presenting for pruritus or allergic skin disease<sup>1</sup> and 15% of those may be allergic to chicken whereas only 4% seem to be allergic to egg.<sup>2</sup> Clinical signs of CAFR typically are dermatological, gastrointestinal (GI), or both and affected dogs can be successfully managed using either alternate or hydrolyzed protein sources.<sup>3,4</sup>

Controlled studies of CAFR are uncommonly reported in the literature and are not standardized. Lack of consistency in the design of interventional dermatology studies in dogs led to the proposal of the core outcome set for canine atopic dermatitis (COSCAD'18) which includes 3 endpoints: a veterinary assessment of skin lesions such as the canine atopic dermatitis lesion index (CADLI) or canine atopic dermatitis extent and severity index (CADESI), an owner-assessment of scratching behavior such as the pruritus visual analog score (PVAS), and an owner global assessment of treatment efficacy (OGATE).<sup>5</sup> We used COSCAD'18 criteria to evaluate 2 foods because the criteria could readily be applied to dogs with CAFR as well as dogs with atopic dermatitis. The major advantage of COSCAD'18 is that it allows for comparison of results between studies by standardizing outcomes. A drawback is that the measures used are subject to biased reporting by the veterinarian or a pet owner or both. Therefore, we included a wearable device to provide objective data. We previously described behavior algorithms for dogs based on continuous, high-resolution accelerometer data collected by collar-worn activity monitors.<sup>6</sup> The algorithms are sensitive, specific, and >99% accurate in quantifying scratching and shaking in dogs based on validation against >500 video assessments of scratching and shaking in a population of >300 dogs.<sup>6</sup> Activity monitors are capable of continuously and objectively quantifying behaviors in dogs 24 hours per day, 7 days per week, and have been used successfully in a nutrition intervention study.<sup>7</sup>

Our objective was to conduct a randomized controlled clinical trial using COSCAD'18 criteria and activity monitor data to evaluate the efficacy of a therapeutic food containing egg and sources of phytonutrients compared to a hydrolyzed protein control food in managing clinical and owner-assessed pruritic signs in dogs with CAFR in a general practice setting.

## 2 | MATERIALS AND METHODS

### 2.1 | Ethics

This study was approved by the sponsor's Institutional Animal Care and Use Committee (CP824a, 11/17/2018) and was performed in accordance with the sponsor's animal welfare policy. Written, informed owner consent was obtained before the commencement of any study activities.

### 2.2 | Study design

A controlled, double-masked, multicenter, prospective clinical study was conducted and included monitoring of activity, CADLI,<sup>8</sup> PVAS,<sup>9,10</sup> OGATE,<sup>5</sup> and additional questionnaires. The study consisted of 2 periods: a baseline period (days 0-21) and a treatment period (days 22-42).

### 2.3 | Patients

Recruitment occurred between September 2019 and March 2020 and included dogs  $\geq 1$  year of age if they were free of concurrent disease, had a history of GI signs (tenesmus, diarrhea, or soft feces) with or without dermatological signs (erythema, scratching) related to an adverse reaction to food diagnosed by resolution of signs after a feeding trial and were currently stable for these clinical signs as determined by the attending veterinarian; patients with known allergy to egg were excluded. Recruitment focused on dogs with cutaneous adverse reaction to food but those with concurrent GI manifestations were permitted provided the patient's GI signs were not consistent with inflammatory bowel disease (eg, undetermined weight loss, hypoproteinemia). Sample size calculations were made assuming a 40% change from baseline for the response variables. Monoclonal antibody-based medications and intermittently-dosed immunosuppressive agents were not allowed; other prior medications were allowed if owners were willing to keep the treatment regimen constant throughout the study. Pet owners were recruited by veterinarians from 11 general practices throughout the continental United States; health was assured based on complete physical examination,

CBC, serum biochemistry, serum total T4 concentration, and heartworm test at study entry and a CBC and serum biochemistry profile at study completion. No socialization or enrichment activity restrictions were placed on the dogs.

## 2.4 | Study foods

Details of the macronutrient content and ingredient list of the study foods are provided as supplemental information (Tables S1 and S2); the positive control food (PCF) was a protein hydrolysate-based food (Royal Canin Ultamino, Lot #119490, Batch Codes 01312020 & 02292020, Purchased 10/2018 and Royal Canin Ultamino, Lot #123278, Batch Code 01292021, Purchased 10/2019) and the therapeutic test food (TTF) was a novel protein food with egg and rice as the major protein sources with additional sources of phytonutrients (Hill's Pet Nutrition Prescription Diet Derm Complete, Lot #122186, Produced 6/28/2019). Dogs were limited to their typical food during baseline and blocked based on CADLI scores (3 point increments). Patients were randomly assigned to either the TTF or PCF in a 1 : 1 allocation ratio using an electronic data capture system (Vision V9P3, Prelude Dynamics, Austin, Texas). Study foods were provided in color-coded bags to mask food identity to all study participants. Dogs included in the analysis entered the study on a variety of foods, but all foods were novel or hydrolyzed protein foods or other therapeutic foods. Supplements or treats were not allowed and dog owners were instructed to maintain the dog's feeding routine. The volume of food offered was based on the dog's current weight, caloric content of the study foods, and input from the veterinarian.

## 2.5 | Activity monitor

All dogs enrolled in the study were provided with a collar-mounted activity monitor which used triaxial accelerometer technology to generate a continuous record of the dog's motion throughout the baseline and treatment periods of the study. After collection, the data were processed using validated algorithms to quantify dermatologic related behaviors including scratching and shaking; sleeping and sleep quality (based on sleep disruptions) also were measured.<sup>6</sup> Study days in which a minimum of 20 hours of data from the activity monitor was obtained were considered "qualifying days" and included in the statistical analysis. Behavior data were summarized as the total duration of each behavior in seconds per day whereas sleep quality was assessed on a scale of 0 (frequently interrupted) to 100 (uninterrupted).

## 2.6 | Data collection

Study entry was considered day 0; questionnaire data from day 21 was considered baseline and compared to day 42 (end of study). Activity data were recorded on a continuous basis, the baseline period spanning days 0-21, and test period days 22-42. At each visit,

veterinarians completed the CADLI and other questionnaires. For the CADLI, grades were assigned reflecting the degree of alopecia/lichenification/hyperpigmentation and erythema/excoriation/erosion for each of 5 body regions on a scale of 0 (none) to 5 (severe) yielding 2 subtotals that were added together for a maximum score of 50.<sup>8</sup> Scores <8/50 were considered clinically normal.<sup>5</sup> At the same time points, owners completed the PVAS using the scale of 0 (none) to 10 (severe).<sup>9,10</sup> Scores <3.6/10 were considered clinically normal.<sup>5</sup> Owners were asked to score overall skin and fecal quality and answered a series of questions regarding their dog's quality of life based on a questionnaire developed and validated for dogs with atopic dermatitis.<sup>11</sup> Quality of life responses consisted of a 5-point Likert scale ranging from strongly agree to strongly disagree. Other questions were based on a score of 1-100. Fecal quality was graded 1 (watery) to 5 (firm) using a scale that included both pictures and word descriptions. A successful food transition was defined as a transition to the study food without experiencing an adverse event or reporting poor palatability within 7 days of starting the study food, as reported by either the veterinarian or the owner.

## 2.7 | Statistical methods

All data were analyzed by a biostatistician (J. Brejda) who was blinded to the identity of the test and control foods and using Statistical Analysis Software (SAS, version 9.4). Differences in mean animal age and weight among dogs assigned to PCF and TTF were analyzed using a 2-sample *t* test. Distribution of body fat index (BFI) and sex between dogs enrolled into the PCF and TTF groups was analyzed using Fisher's exact test. Questionnaires that provided a numerical ranging from 0 to 100 were assumed to be continuous and normally distributed and were analyzed using a linear mixed model with food, day, and food × day as fixed effects in the model. The correlation between the repeated measures (day) was modeled by fitting an appropriate covariance structure selected using the corrected Akaike information criterion (AICC) and Bayesian information criterion (BIC) fit statistics. A simulation-based adjustment was used to control for inflation of the Type I error rate resulting from multiple comparisons. Trends over days were tested using orthogonal polynomial contrasts for linear and quadratic trends. The pet quality of life questionnaire had nominal ordinal responses such as strongly agree, agree, neutral, disagree, or strongly disagree and was analyzed using the Cochran-Mantel-Haenszel test with modified ridit scores. Separate analyses were performed for each day the questionnaire was completed.

Values from wearable data for each activity during the 3-week baseline period were averaged to produce a single mean value for each animal. Values from the treatment period were averaged at weekly intervals for each animal. The mean baseline values were subtracted from weekly treatment period values for each activity to calculate a period change from baseline (PCFB) value for each animal and week. The PCFB values were analyzed using a general linear mixed-model with food, week, and the food × week interaction as fixed effects. To account for the correlation between repeated

measurements made at weekly intervals, 6 common covariance structures were fit to the data, and the AICC fit statistic was used to select the best covariance structure for each activity. To control for multiplicity, a simulation-based adjustment (ADJUST = SIMULATE) was used to control for inflation of the Type I error rate. To test for trends over time, orthogonal polynomial contrasts for linear, quadratic, and

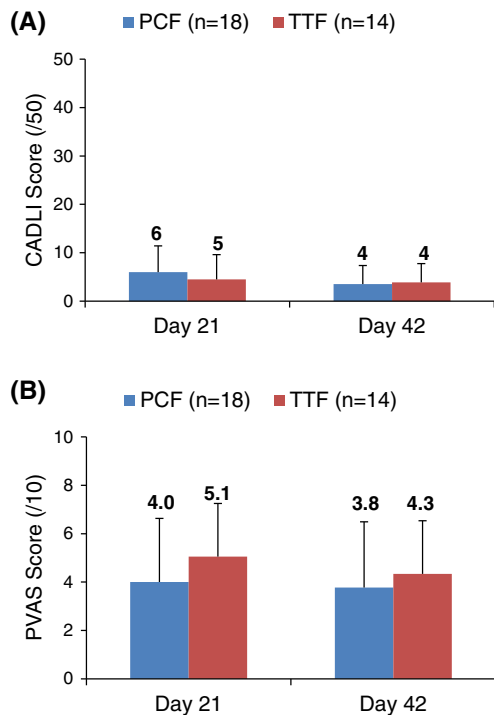
cubic effects were performed. Differences were considered significant when  $P \leq .05$ .

### 3 | RESULTS

#### 3.1 | Dogs

Patient signalment and characteristics are summarized and provided as supplemental information (Table S3). No significant differences were found between groups with respect to sex, weight, age, or breed. Forty-four dogs were screened, 35 were randomized and received study foods, and 32 dogs completed the study and were included in the analysis (14 PCF and 18 TTF).

Adverse events and study withdrawals were similar between groups; 3 dogs failed to complete the study for reasons including deterioration of dermatologic condition (1 PCF and 1 TTF) or food acceptance issues (1 TTF). Twelve adverse events were reported for 8 dogs (5 PCF, 3 TTF) and which were assessed by the attending investigator to be possibly or probably related to a food and ranged from mild to moderate and resolved; 2 of these dogs ultimately were withdrawn from the study by their owners (1 PCF, 1 TTF). The most common deviation reported were study visits conducted outside of the study design windows. Deviations included new medications (9 dogs; 6 PCF, 3 TTF). Four changes involved medicines that may have had an effect on clinical signs of food allergies (2 PCF, 2 TTF). The TTF dogs still were included in the analysis because the timing and brevity of medication administration were not expected to have affected the response to the questions at subsequent visits; 1 TTF dog received an ear medication on a single occasion on day 21 after completion of forms, the second dog received a 3-day course of an antihistamine during the baseline period. This dog's baseline was extended so that 3 weeks passed from the time of the last dose of antihistamine to the day 21 visit. For the PCF group, 1 dog received oclacitinib and another received an ear medication in the middle of the treatment period. The change in medications for the PCF dogs



**FIGURE 1** Comparison of canine atopic dermatitis lesion index (CADLI) (A) and pruritus visual analog (PVAS) (B) scores between therapeutic test food (TTF) and positive control food (PCF) after baseline and treatment period. Data are expressed as mean  $\pm$  SD. CADLI: PCF vs TTF: mean  $\pm$  SD: Day 21 =  $6 \pm 5$  vs  $5 \pm 5$ , Day 42 =  $4 \pm 4$  vs  $4 \pm 4$ ;  $P > .05$ . PVAS: PCF vs TTF: mean  $\pm$  SD: Day 21 =  $4.0 \pm 2.6$  vs  $5.1 \pm 2.2$ , and Day 42 =  $3.8 \pm 2.7$  vs  $4.3 \pm 2.2$ ;  $P > .05$

**TABLE 1** Owner reported outcomes for treatment efficacy

Question	Scale	Description	Baseline		End of study	
			PCF	TTF	PCF	TTF
How dull is your dog's hair coat?	0-100	Very shiny-very dull	$34 \pm 16$	$34 \pm 28$	$30 \pm 16$	$29 \pm 28$
How coarse or brittle is your dog's hair?	0-100	Very soft-very coarse/brittle	$37 \pm 26$	$35 \pm 27$	$35 \pm 25$	$24 \pm 23$
How much dandruff is your dog currently displaying?	0-100	None-extremely flaky/scaly	$20 \pm 18$	$18 \pm 26$	$12 \pm 18$	$18 \pm 31$
How disruptive is your dog's skin condition currently to you or your family?	0-100	Not disruptive-extremely disruptive	$28 \pm 30$	$30 \pm 31$	$32 \pm 34$	$30 \pm 29$
How disruptive is your dog's skin condition currently to you or a member of your family's sleep?	0-100	Not disruptive-extremely disruptive	$16 \pm 22$	$22 \pm 28$	$24 \pm 29$	$22 \pm 33$
How much does your dog's skin condition interfere with your enjoyment of snuggling with your dog?	0-100	Not disruptive-extremely disruptive	$12 \pm 22$	$13 \pm 17$	$8 \pm 18$	$16 \pm 21$
Feces score	0-5	Watery-firm	$5 \pm 1$	$5 \pm 1$	$5 \pm 0$	$5 \pm 1$

Note: No comparisons were significant between or within groups. Values are represented as mean  $\pm$  SD.

Question	Change	PCF	TTF
My dog interrupts sleeping in order to scratch, lick, bite, or chew itself.	Improvement	7	5
	No change	9	4
	Worse	2	5
My dog is happy.	Improvement	4	2
	No change	9	9
	Worse	5	3
My dog is playful and active.	Improvement	3	3
	No change	11	9
	Worse	4	2
My dog is tired because of his disease.	Improvement	6	3
	No change	12	9
	Worse	0	2
My dog sleeps well.	Improvement	4	1
	No change	9	9
	Worse	5	4
The skin disease has changed my dog's behavior for the worse.	Improvement	5	5
	No change	9	6
	Worse	4	3
The treatment itself (shampoo, pills, etc.) is a major burden to my dog.	Improvement	2	2
	No change	14	8
	Worse	2	4

TABLE 2 Quality of life assessment

Note: Number of dog owners reporting improved, same (no change) or worse scores for quality of life related questions at study start vs study end. No proportions were statistically different for control food vs therapeutic test food.

Abbreviations: PCF, positive control food; TTF, therapeutic test food.

Behavior	Week	PCF		TTF	
		Mean	95% CI	Mean	95% CI
Scratching (s/d)	1	3.8 ± 21.4	-40.2 to 47.8	-18.8 ± 24.7	-69.6 to 32.0
	2	9.9 ± 15.6	-22.0 to 41.8	3.3 ± 18.0	-33.5 to 40.2
	3	5.0 ± 35.7	-68.7 to 78.6	-42.2 ± 41.3	-127.2 to 42.9
Shaking (s/d)	1	-0.62 ± 2.93	-6.56 to 5.33	-2.18 ± 3.39	-9.04 to 4.68
	2	-3.68 ± 2.93	-9.63 to 2.26	1.12 ± 3.39	-5.75 to 7.98
	3	-4.56 ± 2.93	-10.51 to 1.38	-3.59 ± 3.39	-10.45 to 3.27
Sleeping (h/d)	1	-0.38 ± 0.20	-0.78 to 0.02	0.11 ± 0.23	-0.35 to 0.57
	2	-0.39 ± 0.20	-0.79 to 0.0	-0.41 ± 0.23	-0.87 to 0.05
	3	-0.25 ± 0.20	-0.65 to 0.15	0.03 ± 0.23	-0.43 to 0.49
Sleep quality index	1	0.41 ± 0.75	-1.12 to 1.95	-0.51 ± 0.86	-2.28 to 1.26
	2	-1.45 ± 0.98	-3.48 to 0.57	0.62 ± 1.14	-1.71 to 2.96
	3	0.39 ± 0.86	-1.39 to 2.16	1.38 ± 1.00	-0.67 to 3.44

Note: No changes were significantly different between or within groups. Data are represented as mean ± SD and confidence interval (CI).

Abbreviations: PCF, positive control food; TTF, therapeutic test food.

TABLE 3 Weekly animal activity data for dogs randomized to the therapeutic test food and positive control food groups presented as change from baseline

could have affected the results but because of the type of medications, any change would have been an improvement in clinical response. Therefore, these changes would not have affected the

clinical and statistical conclusions of the study. Importantly, none of these animals was included in the analysis of the activity data. The details of these medications are provided in Table S4.

## 3.2 | COSCAD Outcomes

### 3.2.1 | Canine atopic dermatitis lesion index

No significant differences in CADLI scores were found between and within the PCF and TTF groups at end of baseline and end of study, and results are shown in Figure 1A. Most dogs entered the study with a CADLI <8 (24/32; 75%), indicating a good level of control.<sup>5</sup> All dogs beginning with a score ≤8 (12 PCF, 12 TTF) finished the study with a score ≤8. Dogs that entered the study with a CADLI ≥8 (6 PCF, 2 TTF) ended the study with scores ≤8 except 1 PCF dog (start, 10/50; end, 14/50) and 1 TTF dog (start, 11/50; end, 13/50).

### 3.2.2 | Pruritus visual analog score

No significant differences in PVAS scores were found between or within groups at any of the visits, Figure. 1B. Twenty of 32 dogs (63%) entered the study with PVAS scores >3.6/10. Twenty dogs began with scores ≤3.6 (10 PCF, 10 TTF) and all but 1 PCF and 1 TTF dog finished the study with scores ≤3.6. For dogs that began the study with PVAS scores >3.6, 50% of dogs in the PCF group and 60% of dogs in the TTF group had lower PVAS scores at study end.

### 3.2.3 | Owner assessments

Outcomes are reported in Tables 1 and 2. No significant differences were found ( $P > .05$ ) between or within groups and most owners reported positive scores and little or no change in dermatological or quality of life metrics.

## 3.3 | Activity data

Dogs tolerated the use of the activity sensors and owners did not report any issues with their pets wearing the device. Activity data

could not be obtained from 4 dogs (2 PCF, 2 TTF) for technical reasons. Compliance was excellent: the average number of qualifying days (days with >20 hours of wearable data) was 75% for the baseline period and 85% for the treatment period. Comparing change from baseline between treatment groups (PCF vs TTF), no significant differences were found in any of the evaluated behaviors: scratching, shaking, sleep duration, and sleep quality index (Table 3).

## 3.4 | Other metrics

Veterinarians were asked a series of questions to evaluate the dog's overall skin and hair coat health. No significant differences were found between or within groups or among time points (Table 4). Successful transition to the study foods was higher for the TTF (14/16, 88%) than the PCF (15/19, 79%) group but was not significantly different. Owner responses to food-related questions are reported in Table 5. For enthusiasm, owners of dogs assigned to the PCF felt their dog was substantially less enthusiastic toward that food than their previous food ( $P = .04$ ). All other measures were not different between or within groups.

## 4 | DISCUSSION

We documented similar control of signs associated with CAFR between foods in owner-dog pairs managed in general practices in the United States using a core outcome set of measurements developed and endorsed by veterinary dermatologists in conjunction with an activity monitor. Similarly, we chose the CADLI, PVAS, and owner evaluation results as primary outcome measures but also used activity data and veterinary outcomes to support these findings. A shortcoming of our study was that the population of dogs was not described based on the specific source of their food allergy. A practical approach for general practitioners is to recommend avoidance of common food allergens by prescribing foods with novel or hydrolyzed protein or both, and the results of our study support that approach. To our

**TABLE 4** Veterinary reported outcomes for skin and coat health

Question	Scale	Description	Baseline		End of study	
			PCF	TTF	PCF	TTF
The amount of shedding	0-100	None-severe	31 ± 23	18 ± 17	23 ± 23	26 ± 23
The overall skin quality	0-100	Excellent-poor	24 ± 19	20 ± 17	15 ± 10	20 ± 22
The overall coat quality	0-100	Excellent-poor	21 ± 20	17 ± 13	14 ± 11	17 ± 18
The overall clinical signs associated with dermatitis	0-100	None-severe	22 ± 22	17 ± 18	15 ± 15	22 ± 26
How the overall clinical signs associated with dermatitis in this dog have changed since the previous exam?	0-100	Significant improvement-significant deterioration	47 ± 11	47 ± 12	40 ± 15	44 ± 17
How has skin healing progressed since the previous exam?	0-100	Significant improvement-significant deterioration	46 ± 13	44 ± 13	39 ± 16	43 ± 18

Note: No scores were significantly different within or between groups. Values are represented as mean ± SD. Scores were 0-100 with the lower score reflecting more ideal status.

Abbreviations: PCF, positive control food; TTF, therapeutic test food.

**TABLE 5** Owner reported outcomes for food assessment and performance

Question	Scale	Description	Baseline		End of study	
			PCF	TTF	PCF	TTF
How well your dog appears to like the food you are currently feeding him/her?	0-100	Rejects totally-likes extremely	83 ± 18	87 ± 17	74 ± 32	82 ± 22
How enthusiastic your dog appears to be when eating the food you are currently feeding him/her?	0-100	No enthusiasm-extreme enthusiasm	81 ± 22	84 ± 24	69 ± 35*	74 ± 28
Owner—How would you rate your satisfaction with the current food?	0-100	Most satisfied-least satisfied	...	...	49 ± 34	49 ± 35
Owner—Do you prefer this food over the dog's previous food?	Yes/No	...	...	...	31%	55%
Owner—Would you recommend this food to a friend?	Yes/No	...	...	...	80%	62%
Veterinarian—How would you rate your satisfaction with the current food?	0-100	Most satisfied-least satisfied	...	...	29 ± 22	36 ± 31
Veterinarian—Would you recommend this food to a colleague?	Yes/No	...	...	...	100%	90%

Note: Values are represented as mean ± SD where appropriate. Scores were 0-100. Several questions were only assessed at study end.

Abbreviations: PCF, positive control food; TTF, therapeutic test food.

\**P* < .05 vs baseline.

knowledge, a comparison showing similar outcomes between a hydrolyzed and a novel protein food in a population of dogs with CAFR managed in clinical practice has not been published previously.

The TTF incorporated ingredients to avoid as well as modulate the immune response. For the test food, egg was selected as a primary protein source because documented cases of allergies to egg represent approximately 4% of all food allergies in dogs, lower than other protein sources such as chicken or soy.<sup>12-14</sup> Several components of egg have been shown to have immunomodulating effects.<sup>15</sup> We previously have reported that a food with polyphenol containing phytonutrients modulates clinical signs in dogs with environmental allergies.<sup>16,17</sup> Polyphenols have been shown to modulate the immune system directly by inhibiting degranulation of mast cells as well as cytokine and immunoglobulin production and indirectly by binding antigens, thus rendering them less recognizable by the immune system.<sup>18,19</sup> Clinically, once pruritus is controlled, skin healing can commence, and is supported by dietary antioxidants, vitamins, fatty acids, and minerals.<sup>20-23</sup>

To our knowledge, ours is the first study using COSCAD'18 criteria to evaluate food in managing CAFR. The COSCAD'18 was intended to be used in the evaluation of pharmaceuticals in dogs with environmental allergies but its use for food allergy has worked well. A benefit of the COSCAD'18 is that it demands a broader assessment of the clinical condition than a study design using only veterinary or owner input. Furthermore, our study showed that COSCAD'18 could be employed in study designs examining the maintenance of clinical condition.

We interpreted the CADLI and PVAS with reference to values considered normal because some level of scratching behavior can be habitual. The upper threshold between what would be considered normal and what would be clinically relevant is a CADLI score of 8 and a PVAS score of 3.6.<sup>5</sup> To be eligible, dogs were considered controlled with respect to

dermatological signs, but minimum criteria were not set nor were dogs blocked based on score. Different scores were observed among participants at study entry but were not different between groups. The range was likely because of the fact that controlled is a subjective assessment. Dogs entering the study with higher scores improved and improvements were similar between groups.

To our knowledge, ours is the first study to combine COSCAD'18 criteria with activity data in a nutrition intervention study. Activity monitors provided continuous and objective quantification of each dog's pruritic behavior. One limitation is that minimum technological requirements must be met, which may prohibit its use by certain owners and 1 participant was lost for this reason. Wearable data supported that both foods maintained control of clinical signs including scratching, shaking, sleep duration, and sleep quality. Future studies could examine the correlation between individual COSCAD'18 criteria and measures of behavior in larger groups of dogs with active clinical signs.

Multiple owner-assessed outcomes were evaluated, including hair coat dullness, brittleness, and the amount of dandruff, as well as endpoints reflecting pet owner enjoyment of dog companionship. Neither clinical nor emotional endpoints were statistically different between foods. Emotional scores tended to be higher at study end and were similar between groups. Dogs began the study with normal fecal quality which did not change, and foods were similarly accepted in both groups. When asked specifically about their opinion of the foods, veterinarians and owners reported high satisfaction scores (>50/100) and willingness to recommend foods to a friend or colleague (>50%).

One limitation of our study is that the elimination trial was performed previously and not as part of the trial. As such, we were not able to set the conditions of the food elimination trial. This was because a prospective trial to recruit newly diagnosed cases of CAFR would take a long period of time. We controlled for this issue by recruiting animals

where the veterinarian, and not the owner, attested to the presence of the food allergy and history of a food elimination trial. A second potential limitation is the possibility of Type II error. To minimize this possibility, sample size calculations were made assuming a 40% change from baseline for the response variables. This is the magnitude of the response anticipated as a result of feeding the therapeutic food. The anticipated response was observed over time, which from a clinical standpoint was the desired outcome because it showed that the therapeutic food was beneficial. However, it is possible that the magnitude of the difference between the 2 foods was not as large as the magnitude of change over time. As a result, the sample size needed to show a significant change over time was insufficient to demonstrate significant differences between the 2 foods, resulting in a Type II error.

## 5 | CONCLUSION

In summary, we successfully used COSCAD'18 criteria and activity monitors to provide evidence for similar management of clinical signs associated with CAFR by 2 foods: a commercially available hydrolyzed protein-based food and a therapeutic food with egg, rice, and sources of polyphenols.

### ACKNOWLEDGMENT

Funding was provided by Hill's Pet Nutrition.

### CONFLICT OF INTEREST DECLARATION

J. Brejda provided contracted services to Hill's Pet Nutrition, Inc, and all other authors are employees of Hill's Pet Nutrition, Inc. Preliminary results from this study were presented as 2 abstracts of the 9th World Congress of Veterinary Dermatology. Evaluation of clinical signs related to adverse food reaction (AFR) in dogs using a new behavior-recognition approach and Successful management of clinical signs related to adverse food reaction in dogs using a food with a new approach. *Veterinary Dermatology* 2020; 31:S1:103-104.

### OFF-LABEL ANTIMICROBIAL DECLARATION

Authors declare no off-label use of antimicrobials.

### INSTITUTIONAL ANIMAL CARE AND USE COMMITTEE (IACUC) OR OTHER APPROVAL DECLARATION

This study was approved by Hill's Pet Nutrition IACUC (CP824a, 11/17/2018) and was performed in accordance with the Hill's Pet Nutrition animal welfare policy. Written, informed owner consent was obtained prior to commencement of any study activities.

### HUMAN ETHICS APPROVAL DECLARATION

Authors declare human ethics approval was not needed for this study.

### ORCID

James L. Weemhoff  <https://orcid.org/0000-0001-6793-4703>

Jennifer M. MacLeay  <https://orcid.org/0000-0002-9198-8071>

John Brejda  <https://orcid.org/0000-0002-7197-9565>

Heidi Schiefelbein  <https://orcid.org/0000-0001-7466-3163>

Susan M. Wernimont  <https://orcid.org/0000-0001-7203-1349>

Kathy L. Gross  <https://orcid.org/0000-0001-9614-2692>

## REFERENCES

- Olivry T, Mueller RS. Critically appraised topic on adverse food reactions of companion animals (3): prevalence of cutaneous adverse reactions in dogs and cats. *BMC Vet Res*. 2017;13:51.
- Mueller RS, Olivry T, Prélaud P. Critically appraised topic on adverse food reactions of companion animals (2): common food allergen sources in dogs and cats. *BMC Vet Res*. 2016;12:9.
- Loeffler A, Lloyd H, Bond R, Kim JY, Pfeiffer DU. Dietary trials with a commercial chicken hydrolysate diet in 63 pruritic dogs. *Vet Rec*. 2004;154:519-522.
- Fritsch DA, Roudebush P, Allen T, et al. Effect of two therapeutic foods in dogs with chronic nonseasonal pruritic dermatitis. *Intern J Appl Res Vet Med*. 2010;8:146-154.
- Olivry T, Benschneider E, Favrot C, et al. Development of a core outcome set for therapeutic clinical trials enrolling dogs with atopic dermatitis (COSCAD'18). *BMC Vet Res*. 2018;14:238.
- Griffies JD, Zutty J, Sarzen M. Wearable sensor shown to specifically quantify pruritic behaviors in dogs. *BMC Vet Res*. 2018;14:124.
- Wernimont SM, Thompson RJ, Mickelsen SL, Smith S, Alvarenga I, Gross K. Use of accelerometer activity monitors to detect changes in pruritic behaviors: interim clinical data on 6 dogs. *Sensors (Basel)*. 2018; 18:249.
- Plant JD, Gortel K, Kavalik M, Polissar NL, Neradilek MB. Development and validation of the Canine Atopic Dermatitis Lesion Index, a scale for the rapid scoring of lesion severity in canine atopic dermatitis. *Vet Dermatol*. 2012;23:515-e103.
- Hill PB, Lau P, Rybnicek J. Development of an owner-assessed scale to measure the severity of pruritus in dogs. *Vet Dermatol*. 2017;18: 301-308.
- Rybnicek J, Lau-Gillard PJ, Harvey R, Hill PB. Further validation of a pruritus severity scale for use in dogs. *Vet Dermatol*. 2009;20: 115-122.
- Favrot C, Linek M, Mueller R, Zini E, International Task Force on Canine Atopic Dermatitis. Development of a questionnaire to assess the impact of atopic dermatitis on health-related quality of life of affected dogs and their owners. *Vet Dermatol*. 2010;21: 63-69.
- Marsella R. Hypersensitivity disorders. In: Muller GH, Kirk RW, Scott DW, eds. *Small Animal Dermatology*. 7th ed. St. Louis, MO: Saunders Co.; 2013:403-405.
- Roudebush P. Ingredients and foods associated with adverse reactions in dogs and cats. *Vet Dermatol*. 2013;24:293-294.
- Johansen C, Mariani C, Mueller RS. Evaluation of canine adverse food reactions by patch testing with single proteins, single carbohydrates and commercial foods. *Vet Dermatol*. 2017;28:473-477.
- Mine Y. *Egg Bioscience and Biotechnology*. Hoboken, NJ: John Wiley & Sons; 2008.
- MacLeay J, Schiefelbein H, Gross K. A double masked clinical trial of a therapeutic food in the management of canine atopy. *J Vet Intern Med*. 2016;30:1485-1486.
- Gross K, MacLeay J, Fritsch D, et al. (Inventors) Hill's Pet Nutrition, Inc. (Assignee). Pet Food Composition for Managing Non-Food Allergies. United States Patent Applications 2018 US 15/764345.
- Singh A, Holvoet S, Mercenier A. Dietary polyphenols in the prevention and treatment of allergic diseases. *Clin Exp Allergy*. 2011;41: 1346-1359.
- Sommerhoff CP, Osborne ML, Lazarus SC. Effect of inhibitors on histamine release from mast cells recovered by bronchoalveolar lavage in Basenji-Greyhound and Mongrel dogs. *Agents Actions*. 1990;31: 183-189.



20. Mooney MA, Vaughn DM, Reinhart GA, et al. Evaluation of the effects of omega-3 fatty acid-containing diets on the inflammatory stage of wound healing in dogs. *Am J Vet Res.* 1998;59: 859-863.
21. Marsh KA, Ruedisueli FL, Coe SL, Watson TGD. Effects of zinc and linoleic acid supplementation on the skin and coat quality of dogs receiving a complete and balanced diet. *Vet Dermatol.* 2000;11: 277-284.
22. Jewell DE, Yu S, Joshi DK. Effects of serum vitamin E levels on skin vitamin E levels in dogs and cats. *Vet Ther.* 2002;3:235-243.
23. Kapun AP, Salobir J, Levart A, Kalcher GT, Svete AN, Kotnik T. Vitamin E supplementation in canine atopic dermatitis: improvement of clinical signs and effects of oxidative stress markers. *Vet Rec.* 2014;175:560.

## SUPPORTING INFORMATION

Additional supporting information may be found online in the Supporting Information section at the end of this article.

**How to cite this article:** Weemhoff JL, MacLeay JM, Brejda J, Schiefelbein H, Wernimont SM, Gross KL. Successful nutritional control of scratching and clinical signs associated with adverse food reaction: A randomized controlled COSCAD'18 adherent clinical trial in dogs in the United States. *J Vet Intern Med.* 2021;35(4):1884–1892. <https://doi.org/10.1111/jvim.16193>