

RESEARCH ARTICLE

Independent predictors of acute kidney injury in patients with acute coronary syndrome after percutaneous coronary intervention

Aisulu Zhunuspekova¹, Jamilya Mansurova^{2*}, Lyudmila Karazhanova¹

1 Department of Cardiology and Interventional Arrhythmology, Semey Medical University, Semey, Kazakhstan, **2** Head Office, Semey Medical University, Semey, Kazakhstan

* mansurova_dzhami@mail.ru

Abstract

Introduction

High residual platelet reactivity (RPR) in patients after percutaneous coronary intervention (PCI) receiving antiplatelet agents has been associated with a high risk of developing acute kidney injury (AKI).

Study aim

This study aimed at identification of independent prognostic predictors of AKI risk in patients with acute coronary syndrome (ACS) after PCI.

Study design, setting and patients

This was a prospective single-center clinical trial that included 155 patients (n = 119 without AKI, n = 36 with AKI, mean age 64.0±10.6 years, of whom 74.2% were males), who underwent PCI with stenting. We prospectively evaluated RPR using optical aggregometry. Development of AKI was the primary endpoint.

Results

Acute renal dysfunction was observed in 36 patients (23.2%) after PCI, the risk factors of which according to univariate regression analysis were: age (p = 0.040), low diastolic blood pressure (DBP) (p = 0.001), having severe heart failure (HF) according to Killip (p<0.001), low level of hemoglobin (p = 0.026) and erythrocytes (p = 0.005), increased creatinine (p<0.001), low baseline glomerular filtration rate (GFR) (p<0.001), low left ventricular ejection fraction (LV EF) (p = 0.003), high residual platelet reactivity (RPR) (p<0.001) and platelet aggregation area under the curve (AUC) with 10 µg/mL ADP (p<0.001), as well as dose of X-ray contrast medium (XCM) (p = 0.008). As a result of multivariate regression analysis the following independent predictors of AKI were established with the inclusion of the above factors: baseline creatinine level [OR 1.033 at 95% CI from 1.017 to 1.049; p<0.001], RPR with 10 µg/mL ADP [OR 1.060 at 95% CI from 1.027 to 1.094; p = 0.001], dose of an XCM

OPEN ACCESS

Citation: Zhunuspekova A, Mansurova J, Karazhanova L (2021) Independent predictors of acute kidney injury in patients with acute coronary syndrome after percutaneous coronary intervention. PLoS ONE 16(3): e0247304. <https://doi.org/10.1371/journal.pone.0247304>

Editor: Yajing Wang, Thomas Jefferson University, UNITED STATES

Received: June 16, 2020

Accepted: February 4, 2021

Published: March 4, 2021

Copyright: © 2021 Zhunuspekova et al. This is an open access article distributed under the terms of the [Creative Commons Attribution License](https://creativecommons.org/licenses/by/4.0/), which permits unrestricted use, distribution, and reproduction in any medium, provided the original author and source are credited.

Data Availability Statement: The data underlying the results presented in the study are available from Harvard Dataverse Repository <https://doi.org/10.7910/DVN/2YDJED>.

Funding: The study was funded via a local grant provided by the "MUS" NCJSC (No. 23 dated 05.24.2018).

Competing interests: NO authors have competing interests

[OR 1.005 at 95% CI from 1.001 to 1.008; $p = 0.014$], diastolic blood pressure (DBP) [OR 0.926 at 95% CI from 0.888 to 0.965; $p < 0.001$].

Conclusion

ADP-induced high residual platelet reactivity, baseline creatinine level, X-ray contrast medium, low diastolic blood pressure were independent predictors of AKI in patients with ACS after PCI.

Introduction

Cardiovascular disease is the leading cause of death worldwide [1]. Acute coronary syndrome (ACS) is a clinical manifestation of exacerbation of coronary heart disease.

Numerous studies have shown that in patients with ACS, acute renal dysfunction occurs in one of five cases and is one of the leading predictors of cardiovascular complications and mortality in the hospital period and in the long term [2–5].

When performing reperfusion therapy in patients with ACS, mechanical revascularization is the strategy of choice compared to the pharmacological reperfusion method [6]. Dual antiplatelet therapy (DAPT) both before and after PCI is one of the fundamental aspects of prevention of ischemic complications in patients with ACS [7]. The prognostic value of platelet hyperactivity in the development of AKI in this category of patients is little studied. This procedure requires the use of iodine-containing XCM which have a toxic effect on the renal tubule epithelium and changes in renal hemodynamics. A moderate decrease in kidney function is potentially important in critical conditions and in studies of contrast-induced nephropathy (CIN) [8].

The mechanism of development of AKI of ACS has not yet been fully studied, and the measures for its prevention are not unified. Therefore, prediction of acute kidney injury is critical.

To improve outcomes in patients with ACS after PCI performed with XCM, early identification of patients at high risk for acute renal impairment is necessary. The aim of this study was to identify independent predictors of AKI in patients with ACS after myocardial revascularization.

Materials and methods

Study design, setting and patients

The present prospective study included 155 patients with ACS, who were hospitalized in the cardiac surgery department of the University Hospital of Semey Medical University (Kazakhstan) from 2018 to 2019. All patients had undergone PCI and were prospectively evaluated for PRP using optical aggregometry induced by adenosine diphosphate (ADP) and epinephrine. Inclusion criteria: patients with ST-elevation acute coronary syndrome (STE-ACS) and non ST-elevation acute coronary syndrome (NSTEMI-ACS) according to coronarography data, coronary artery disease requiring PCI with stenting; taking DAPT with a P₂Y₁₂ receptor inhibitor and acetylsalicylic acid (ASA).

Exclusion criteria: terminal renal failure in program hemodialysis patients, incidence of oncological diseases, intolerance to antiplatelet agents, refusal to participate in the study.

The study design was approved by the local ethics committee and followed the principles of Helsinki Declaration. Study design was approved by Local Ethical Committee of "Medical

University Semey" Non-Commercial Joint-Stock Company Protocol 9 dated September 13, 2017. All patients gave written informed consent to participate in the study.

Intervention

All patients received 325 mg of aspirin and a loading dose of 600 mg of clopidogrel or ticagrelor 180 mg, followed by a maintenance dose of 325 mg daily of aspirin and 75 mg daily of clopidogrel or ticagrelor 90 mg daily.

Key outcome indicators

Acute kidney injury was the primary endpoint, which was defined according to the recommendation of KDIGO (2012) as an increase in serum creatinine (Cr) level ≥ 26.5 $\mu\text{mol/L}$ within 48 hours after PCI compared to the initial indicator [9–12]. To determine the filtration function of the kidneys, as the most optimal, the glomerular filtration rate was calculated using the Cockcroft-Gault formula [13].

Testing platelet aggregation activity

Aggregatometry is based on the ability of platelets to activate and form cell aggregates under the influence of inductors. During the analysis, changes in the light transmission of platelet-rich plasma are recorded as a result of the interaction of platelets through the IIb/IIIa glycoprotein receptors in response to stimulation by the inducer. This principle is used in the operation of an optical aggregometer. When assessing platelet aggregation according to G. Born and J. O'Brien, platelets are activated at 37°C by adding one of the agonists [14, 15]. After that, platelet aggregation occurs and transparency in the blood sample increases, which leads to an increase in the aggregation curve. Blood sampling was performed 12–48 hours after PCI in the morning on an empty stomach from the cubital vein into vacuum tubes with 3.8% sodium citrate (in a ratio of 9:1) with a short-term application of a tourniquet with a needle diameter of 0.8 mm. Blood samples were delivered to the laboratory within 20–30 minutes. To obtain platelet-rich plasma, a test tube with blood was rotated in an OPn-3.02 "Dastan" centrifuge (Kyrgyzstan) at 1000 rpm. within 10 minutes. The platelet-rich plasma tube was re-centrifuged at 3000 rpm for 15 minutes. The antithrombotic efficacy of antiplatelet agents was assessed on an AggRAM Helena Biosciences Europe aggregometer using adenosine-5'-diphosphate (ADP) and epinephrine from Tekhnologiya-Standard (Russia) at a dilution of 10 $\mu\text{g/mL}$ and 2.5 $\mu\text{g/mL}$, respectively. The aggregation registration time was 10 minutes. The results of the study of platelet function were assessed by the maximum percentage of aggregation (max %) in response to stimulation with the inductor and the AUC. Platelet-poor plasma was taken as 100%, platelet-rich plasma as 0%. [dx.doi.org/10.17504/protocols.io/bk6skzee](https://doi.org/10.17504/protocols.io/bk6skzee)

Coronaroangiography

Coronary angiography was performed on a Siemens Artis zee angiographic unit using the standard M. Judkins technique with transfemoral or radiation access, subsequent digital x-ray processing, and DVD recording. According to the Seldinger method, a puncture of the femoral or radial artery was performed under a local anesthesia, followed by the installation of a hemostatic introducer sheath. To visualize coronary arteries, a low osmolarity XCM-Iohexol–was used. A hemodynamically significant criterion was considered to be a narrowing of the lumen of the vessel over 70% in diameter. Based on the results of the CAG and technical capabilities, simultaneous PCI was performed. X-ray data of all patients were recorded in the Protocol of coronary angiography.

Statistical analysis

Statistical data processing was carried out using the SPSS 20.0 program. To check the correspondence of the real distribution of variables to the normal one, the Kolmogorov-Smirnov test was used. Quantitative variables with normal distribution were presented as mean values and their standard deviations ($M \pm SD$), min and max values; for comparison, the Student's *t*-test was used for independent samples. In case of an abnormal distribution, quantitative variables are presented in the form of the median and interquartile range ($Me(IQR)$), min and max values; for their comparison, the Mann-Whitney *U*-test was used. Dichotomous signs are presented in the form of shares (absolute number of patients (%)), to identify the relationship between nominal variables χ^2 Pearson, correction for continuity, Fisher's test. Using binary logistic regression (univariate and multivariate), independent predictors of AKI and odds ratio (OR) were established at 95% confidence intervals (CI) for each factor. Using the ROC analysis, the predictive value of quantitative variables was estimated, their critical values were established, at which the event will occur with a probability of 0.5. Differences between the compared variables were considered significant at $p < 0.05$.

Results

The present study included 155 patients whose average age was 64.0 ± 10.6 years old with a minimum and maximum being 29 and 87 respectively.

Among them, there were 115 (74.2%) men (average age 62.2 ± 10.6 years) and 40 (25.8%) women (average age 69.3 ± 8.9 years). Men were significantly younger than women ($p < 0.001$). There were no statistically significant differences in the development of acute renal dysfunction in the patients with STE-ACS and NSTEMI-ACS ($p = 0.715$), therefore the calculation was performed for the entire group of patients. Comparative clinical and laboratory characteristics of patients in groups with AKI ($n = 36$; 23.2%) and without AKI ($n = 119$; 76.8%) are presented in [Table 1](#).

The incidence of AKI in the study population was 36 (23.2%) cases. [Table 2](#) shows the results of a single-factor regression analysis, which identified statistically significant risk factors for AKI against the background of dual antiplatelet therapy.

When the above variables were included in the multivariate regression analysis, the following independent predictors of AKI were statistically significant: creatinine [OR 1.033 at 95% CI from 1.017 to 1.049; $p < 0.001$], RPR with $10 \mu\text{g/mL}$ ADP [OR 1.060 at 95% CI from 1.027 to 1.094; $p = 0.001$], X-ray-contrast medium dose [OR 1.005 at 95% CI from 1.001 to 1.008; $p = 0.014$], diastolic blood pressure (DBP) [OR 0.926 at 95% CI 0.888 to 0.965; $p < 0.001$]. The accuracy of the forecast when including the established independent predictors of AKI was 87.1%, sensitivity— 58.3% and specificity— 95.8%.

To determine the optimal cut—off points for quantitative variables, a ROC analysis was performed with the construction of ROC curves ([Fig 1](#)).

The areas under the ROC curves for independent predictors of AKI development are shown in [Table 3](#).

In the study population, the optimal cut—off points for variables with the highest sensitivity and specificity were: creatinine level $119 \mu\text{mol/L}$, RPR value 45%, X-ray contrast medium dose 275 ml, diastolic blood pressure 70 mm Hg.

The following multivariate mathematical model was obtained to calculate the probability of the onset of AKI in multifactorial logistic regression:

$$P = 1 / 1 + e^{-(0,032 * C + 0,058 * RPR + 0,005 * XCM - 0,077 * DBP - 3,342)}$$

where *P*—likelihood of AKI, *e*—the base of the natural logarithm, approximately equal to

Table 1. General clinical characteristics of patients depending on the presence of acute kidney injury.

Indicator	All patients (n = 155)	Patients without AKI (n = 119)	Patients with AKI (n = 36)	p-value
Age, years	64.0±10.6	63.0±10.5	67.2±10.5	0.038*
	29–87	29–87	38–87	
Male, n(%)	115(74.2)	87(73.1)	28(77.8)	0.731 ^c
BMI, kg/m ²	27.0(6.7)	27.6(7.0)	26.7(4.9)	0.190**
	18–80	18–80	20.2–41.4	
Pre-existing arterial hypertension, n(%)	152(98.1)	116(97.5)	36(100)	1.000 ^b
Diabetes mellitus, n(%)	31(20)	25(21.0)	6(16.7)	0.739 ^c
Smoking, n(%)	56(36.1)	45(37.8)	11(30.6)	0.427 ^a
STE-ACS, n(%)	95(61.3)	72(60.5)	23(63.9)	0.715 ^a
ABP systolic, mm Hg	130(20)	130(20)	120(38)	0.069**
	40–210	40–210	40–180	
ABP diastolic, mm Hg	80(10)	80(10)	80(25)	0.001**
	0–100	40–100	0–90	
Clopidogrel	91(58.7)	73(61.3)	18(50)	0.226 ^a
Ticagrelor	64(41.3)	46(38.7)	18(50)	0.226 ^a
Heart Failure (Killip)				
I	80(51.6)	64(53.8)	16(44.4)	0.326 ^a
II	56(36.1)	50(42)	6(16.7)	0.006 ^a
III	1(0.6)	1(0.8)	-	1.000 ^b
IV	18(11.6)	4(3.4)	14(38.9)	<0.001 ^b
LV EF, %	51(9)	51(8)	49,5(12)	0.010**
	23–66	29–66	23–58	
IACBS, n(%)	3(1.9)	2(1.7)	1(2.8)	0.550 ^b
Laboratory indicators				
Hemoglobin, g/L	144(23)	145(20)	136,5(33)	0.033**
	64–180	64–180	80–174	
Erythrocytes	4,6(0.7)	4,6(0.6)	4,3(1.0)	0.003**
	2.5–5.7	2.5–5.7	2.8–5.5	
Cholesterol, mmol/L	4,6(1.7)	4,7(1.7)	4,2(2.0)	0.238**
	2.3–9.0	2.5–9.0	2.3–8.1	
Triglycerides, mmol/L	1,5(1.0)	1,6(1.0)	1,5(1.0)	0.339**
	0.5–5.0	0.6–5.0	0.5–4.1	
Glucose, mmol/L	6,6(3.0)	6,5(2.9)	6,9(3.7)	0.936**
	2,9–20.7	4,0–20.7	2,9–12.5	
Creatinine baseline, µmol/L	101(45)	97(38)	128,7(82)	<0.001**
	37–701	37–218	53–701	
GFR baseline	58.0±23.1	63.4±21.0	40.3±20.8	<0.001*
	8–114	21–114	8–111	
Calcium, mmol/L	1,2(0.1)	1,2(0.1)	1,1(0.1)	<0.001**
	0,9–2,8	0,9–2,8	1,0–2,4	
Residual Platelet Reactivity against the background of DAPT				
RPR with 10 µg/mL ADP, %	46,8(33.8)	41,5(30.9)	61,7(23.7)	<0.001**
	10,5–83,4	10,5–83,4	29,2–82,9	
AUC with 10 µg/mL ADP	37,5(36.0)	28,8(34.6)	51,1(24.0)	<0.001**
	0,9–77,4	0,9–77,4	15,2–76,2	
RPR with 2,5 µg/mL epinephrine, %	34,0±19,4	32,9±18,3	37,6±22,4	0.212**
	0,4–84,7	0,4–79,8	0,4–84,7	

(Continued)

Table 1. (Continued)

Indicator	All patients (n = 155)	Patients without AKI (n = 119)	Patients with AKI (n = 36)	p-value
AUC with 2,5 µg/mL epinephrine	23.6±16.0	22.8±15.1	26.3±18.5	0.251**
	0–68.2	0–64.8	0–68.2	
X-ray contrast medium				
Contrast, mL	200(100)	200(100)	300(175)	0.007**
	100–800	100–800	100–800	

Note.

*—parametric criteria—student t-test, M±SD (mean ± standard deviation); min and max values

** nonparametric test—Mann-Whitney U-test, Me(IQR) (median(interquartile range)); min and max values; nominal variables (absolute number of patients (%))

^a—χ² Pearson

^b—Fisher test

^c—correction for continuity; AKI—acute renal injury; BMI—body mass index; STE-ACS—acute coronary syndrome with ST elevation; BP—blood pressure; IACBS—intra aortic counterpulsation balloon support; LV EF—left ventricular ejection fraction; GFR—glomerular filtrate rate; RPR—residual platelet reactivity; AUC—aggregation area under the platelets curve; ADP—adenosinediphosphate.

<https://doi.org/10.1371/journal.pone.0247304.t001>

2.718; C—creatinine; RPR—residual platelet reactivity induced by ADP; XCM—X-ray contrast medium; DBP—diastolic blood pressure. If the value of P is greater than 0.5, then the onset of the AKI is expected, otherwise the event will not occur.

To assess the quality of the obtained predictive model, we used ROC analysis with the inclusion of predicted values of the probability of AKI development (Fig 2).

Given the presence of a multi-factor predictive model, the optimal value of one factor depends on the indicators of other factors that affect the development of the event.

Discussion

Acute renal dysfunction is a common complication that can develop in patients with ACS and reach the rate of 30% [16–19]. In our study population, acute renal dysfunction developed in 23.2% of patients.

Table 2. Risk factors for AKI in patients with ACS on the background of DAT.

Indicator	OR	95% CI		p-value
		Lower	Upper	
Age	1.041	1.002	1.081	0.040
DBP	0.948	0.919	0.978	0.001
Degree of HF (Killip)	2.190	1.496	3.206	<0.001
Hemoglobin	0.981	0.965	0.998	0.026
Erythrocytes	0.390	0.203	0.747	0.005
Creatinine	1.026	1.013	1.038	<0.001
Baseline GFR	0.940	0.917	0.965	<0.001
LVEF	0.929	0.885	0.975	0.003
RPR with 10 µg/mL ADP	1.046	1.023	1.070	<0.001
AUC with 10 µg/mL ADP	1.041	1.020	1.063	<0.001
XCM	1.004	1.001	1.007	0.008

Note. OR—odds ratio, CI—confidence interval, DBP—diastolic blood pressure, HF—heart failure, GFR—glomerular filtration rate, LVEF—left ventricular ejection fraction, RPR—residual platelet reactivity; AUC—area under the platelet aggregation curve, ADP—adenosine diphosphate, XCM—X-ray-contrast medium.

<https://doi.org/10.1371/journal.pone.0247304.t002>

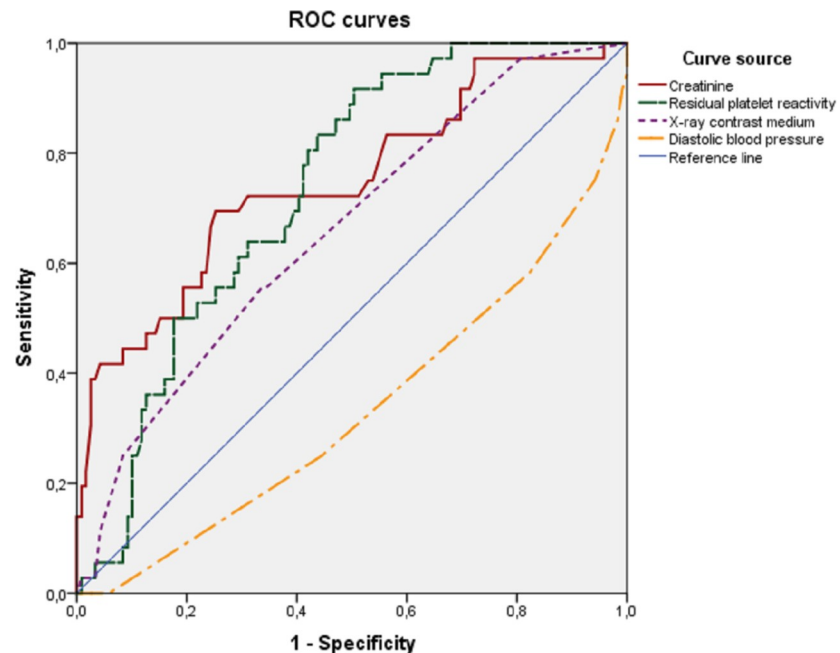


Fig 1. ROC curves of independent variables. ROC-curves of independent predictors of AKI in patients with ACS after PCI (creatinine, residual platelet reactivity, X-ray contrast medium, diastolic blood pressure), which demonstrate the relationship between the sensitivity and specificity of tests.

<https://doi.org/10.1371/journal.pone.0247304.g001>

The key result of this study was the identification of independent predictors for the development of acute renal dysfunction in patients with ACS after PCI with stenting. The baseline high creatinine level, high RPR (induced by 10 $\mu\text{g}/\text{mL}$ ADP), the dose of XCM, low diastolic blood pressure were the main factors for the development of AKI against the background of DAPT, including ASA and clopidogrel/ticagrelor. In binary regression analysis, a multivariate mathematical model of risk was obtained that allows calculating the probability of AKI in patients with ACS after PCI with stenting. The prognostic model we obtained included such factors as ORT, DBP level that can change during therapy, i.e. by optimizing treatment, the likelihood of AKI can be reduced, thereby personalizing the therapy.

One of the important evaluation criteria in this study was platelet function testing by optical aggregometry induced by ADP. Currently, many methods are used to determine platelet aggregation activity. However, the effectiveness of antiplatelet therapy is not controlled, since there is still no standardized parameter by which platelet hyperactivity and the degree of its change against the background of antiplatelet therapy could be established [20, 21].

Table 3. Areas under the ROC curves of independent predictors of AKI development.

Indicator	Area	95% CI		p-value
		Lower	Upper	
Creatinine	0.748	0.650	0.846	<0.001
RPR with 10 $\mu\text{g}/\text{mL}$ ADP	0.733	0.652	0.814	<0.001
XCM	0.659	0.560	0.758	0.004
Diastolic blood pressure	0.333	0.229	0.438	0.002

Note. DI—confidence interval, RPR—residual platelet reactivity; ADP—adenosinediphosphate, XCM—X-ray-contrast medium, BP—blood pressure.

<https://doi.org/10.1371/journal.pone.0247304.t003>

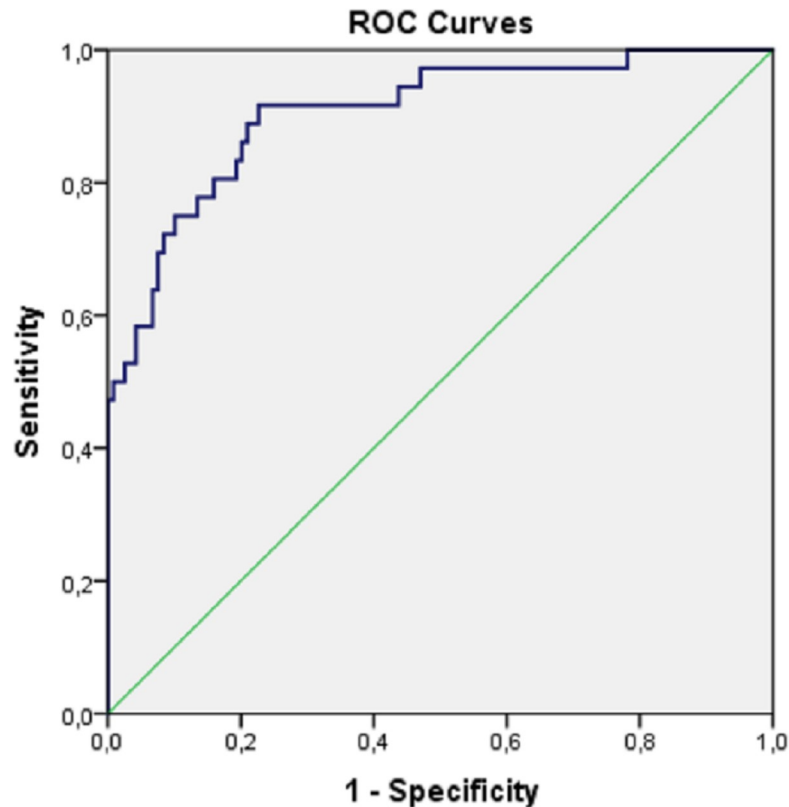


Fig 2. ROC curve of predictive ability of a regression model of AKI prognosis. The area under the ROC curve for the predicted AKI probability values was 0.905 with 95% CI from 0.847 to 0.964 ($p < 0.001$), which corresponds to a very good predictive power of the model.

<https://doi.org/10.1371/journal.pone.0247304.g002>

Several studies have established the dominant role of platelet function in the pathogenesis of ACS and the prognostic value of the high residual platelet reactivity associated with DAPT in the development of adverse cardiovascular events in patients undergoing PCI [22–24]. However, in this category of patients, the role of platelet hyperactivity in the development of AKI is not well understood. As far as we know, this is the first study to demonstrate that the development of AKI in patients with ACS after PCI is associated with high residual platelet reactivity and the area under the aggregation curve, which is recommended for scientific purposes.

Hakan Uçar et al. noted that the medium platelet volume (MPV) may serve as a marker of impaired renal function in patients with stable angina pectoris [25]. In a study by Gremmel T. et al., high residual platelet reactivity was found to be a predictor of the development of adverse clinical outcomes in patients with chronic kidney disease (CKD) with ACS after PCI [26]. Zdrojewski Z. and co-authors identified a direct correlation between the high aggregation activity of platelets, as well as an increase in their size with the progression of renal failure in patients with glomerulonephritis [27]. Also, C.M. Gasperetti et al. found that balloon angioplasty increases serotonin-induced platelet aggregation [28]. A systematic review and meta-analysis done by Jie Jiang et al. established the prognostic significance of the ratio of platelet to lymphocyte in the development of CIN, which develops after administration of XCM, and is one of the leading causes of acute renal failure at hospital stage [8, 29].

In this work, the role of platelets in the development of acute renal dysfunction was studied by determining the residual platelet reactivity by the ADP inducer. It was found that platelets

are involved in the development of AKI since platelet hyperactivity has proven to be one of the important modifiable independent predictors of AKI in patients with ACS after PCI ($p = 0.001$).

One of the factors for the development of AKI with the introduction of XCM is the total amount of contrast used during the procedure. Irfan Sahin et al. found that an increase in the level of XCM ($p = 0.01$), age ($p = 0.05$) and the platelet distribution width (PDW) ($p = 0.04$) were independent predictors of the development of CIN in patients with ACS after coronary angiography and/or PCI [17]. According to the Cath-PCI register, a link was established between the volume of the contrast medium and the risk of renal injury. To achieve optimal intra-procedural results, the use of a minimum amount of a contrast dose should be emphasized in each case [30]. Our study has also identified the relationship between the volume of XCM used for patients with ACS and the risk of AKI ($p = 0.014$), optimal value of the cut-off point for the dose of XCM, at which sensitivity and specificity are maximum, was 275 mL ($p = 0.008$).

Numerous studies have shown that renal failure or chronic kidney disease (CKD) is an independent predictor of AKI in patients with ACS ($p < 0.001$) [31]. The baseline serum creatinine level turned out to be the leading risk factor for AKI in the study population ($p < 0.001$), creatinine levels 1.3 mg/dL (119 $\mu\text{mol/L}$) were the cut-off point ($p < 0.001$). The ACEF risk model (2009), used to assess the risk of adverse cardiovascular complications in patients after surgical and percutaneous myocardial revascularization, includes factors such as age, creatinine, and left ventricular ejection fraction. At creatinine levels above 2 mg/dL (177 $\mu\text{mol/L}$), an increase in the frequency of the combined endpoint, including death from heart disease, acute myocardial infarction, or stroke, was observed [32, 33].

Patients with cardiogenic shock and initial CKD have a higher risk of developing AKI during PCI [30]. Study by Tarun Jain et al. demonstrated the relationship between the risk of developing CIN and cardiogenic shock. It was shown that patients with a cardiogenic shock at the time of PCI had significantly greater risks of developing CIN ($p = 0.003$) [34]. In our study, AKI was significantly more likely to develop in patients with cardiogenic shock (Killip IV) than in patients with normal blood pressure (38.9% vs 3.4%, $p < 0.001$). Low diastolic blood pressure was an independent predictor of AKI ($p < 0.001$). Thus, the presence of any hypotension during PCI can be considered one of the most reliable predictors of AKI.

There is a Cleveland score (2005) risk stratification model for assessing AKI after heart surgery that includes variables such as gender, chronic heart failure, left ventricular ejection fraction, preoperative use of an intra-aortic balloon pump, chronic obstructive pulmonary disease, diabetes mellitus, heart surgery, type of surgery, emergency surgery, baseline creatinine level [35]. The above factors are mainly nominal non-modifiable in contrast to those obtained in our model. When assessing the risk of developing CIN after PCI, the Mehran scale is used, which includes predictors such as hypotension, age, congestive heart failure, anemia, diabetes mellitus, creatinine level, XCM volume, and the use of an intra-aortic balloon pump [36]. The risk scales do not take into account laboratory indicators, such as residual platelet reactivity and platelet aggregation area under the curve, which may vary depending on the effectiveness of antiplatelet therapy, as well as patient adherence to treatment and lead to shifts in risk assessment.

Unfortunately, there is still no consensus on a personalized approach to prescribing DAPT. The results of large randomized trials, such as TRIGGER-PCI, GRAVITAS, ARCTIC, did not reveal the advantages of a personalized approach to prescribing DAPT to patients after planned PCI [37–39]. In contrast, a multicenter randomized trial, TROPICAL-ACS, established the benefit of personalized therapy using platelet function testing in clinical PCI results [40].

The results of our study indicate the need for a personalized approach in prescription of antiplatelet therapy based on platelet function testing, the correction of which can reduce the likelihood of AKI after PCI.

Conclusion

This study has found that independent predictors of the development of acute renal dysfunction in patients with ACS after PCI with stenting against the background of DAPT are: baseline creatinine level ($p < 0.001$), 10 $\mu\text{g}/\text{mL}$ ADP-induced high RPR ($p = 0.001$), dose of XCM ($p = 0.014$), low DBP ($p < 0.001$). RPR, dose of XCM, BP level are modifiable factors. By optimizing treatment aimed at correcting the obtained variables, it is possible to reduce the likelihood of AKI, thereby personalizing the therapy.

Thus, high RPR in patients with ACS 12–48 hours after PCI, detected by optical aggregometry, indicates a high risk of AKI. Given the prognostic significance of platelet function testing, RPR should be determined in this category of patients to identify those at high risk of AKI.

A possible association between high platelet activity and progression of renal failure has not been adequately studied. The results of this work show the need for further prospective studies in this area as well as during other angiographic procedures.

Supporting information

S1 Data.

(ZIP)

Acknowledgments

The authors thank all study participants, the staff of the department of cardiac surgery and the laboratory of Semey Medical University for their support throughout the study.

Author Contributions

Conceptualization: Lyudmila Karazhanova.

Data curation: Aisulu Zhunuspekova.

Formal analysis: Jamilya Mansurova.

Writing – original draft: Jamilya Mansurova.

References

1. WHO | About cardiovascular diseases [Internet]. [cited 2020 Mar 3]. Available from: https://www.who.int/cardiovascular_diseases/about_cvd/ru/
2. Zhao L, Wang L, Zhang Y. Elevated admission serum creatinine predicts poor myocardial blood flow and one-year mortality in ST-segment elevation myocardial infarction patients undergoing primary percutaneous coronary intervention. *J Invasive Cardiol* [Internet]. 2009 Oct [cited 2017 Nov 3]; 21(10):493–8. Available from: <http://www.ncbi.nlm.nih.gov/pubmed/19805833> PMID: 19805833
3. Sooklim K, Srimahachota S, Boonyaratavej S, Kanjanavanit R, Sirivivattanakul N, Piamsomboon C, et al. Renal dysfunction as an independent predictor of total mortality after acute coronary syndrome: the Thai ACS Registry. *J Med Assoc Thai* [Internet]. 2007 Oct [cited 2020 Mar 6];90 Suppl 1:32–40. Available from: <http://www.ncbi.nlm.nih.gov/pubmed/18431884> PMID: 18431884
4. Parikh CR, Coca SG, Wang Y, Masoudi FA, Krumholz HM. Long-term prognosis of acute kidney injury after acute myocardial infarction. *Arch Intern Med*. 2008 May 12; 168(9):987–95. <https://doi.org/10.1001/archinte.168.9.987> PMID: 18474763
5. Newsome BB, Warnock DG, McClellan WM, Herzog CA, Kiefe CI, Eggers PW, et al. Long-term risk of mortality and end-stage renal disease among the elderly after small increases in serum creatinine level

- during hospitalization for acute myocardial infarction. *Arch Intern Med*. 2008 Mar 24; 168(6):609–16. <https://doi.org/10.1001/archinte.168.6.609> PMID: 18362253
6. Ibanez B, James S, Agewall S, Antunes MJ, Bucciarelli-Ducci C, Bueno H, et al. 2017 ESC Guidelines for the management of acute myocardial infarction in patients presenting with ST-segment elevation. *Eur Heart J* [Internet]. 2018 Jan 7 [cited 2018 Oct 13]; 39(2):119–77. Available from: <https://academic.oup.com/eurheartj/article/39/2/119/4095042>
 7. Neumann F-J, Sousa-Uva M, Ahlsson A, Alfonso F, Banning AP, Benedetto U, et al. 2018 ESC/EACTS Guidelines on myocardial revascularization. *Eur Heart J* [Internet]. 2018 Aug 25 [cited 2018 Oct 13]; Available from: <https://academic.oup.com/eurheartj/advance-article/doi/10.1093/eurheartj/ehy394/5079120>
 8. Nash K, Hafeez A, Hou S. Hospital-acquired renal insufficiency. *Am J Kidney Dis* [Internet]. 2002 May [cited 2020 Mar 13]; 39(5):930–6. Available from: <https://linkinghub.elsevier.com/retrieve/pii/S0272638602078733> <https://doi.org/10.1053/ajkd.2002.32766> PMID: 11979336
 9. Morcos SK, Thomsen HS, Webb JAW. Contrast-media-induced nephrotoxicity: A consensus report. *Eur Radiol* [Internet]. 1999 Sep 21 [cited 2020 Mar 7]; 9(8):1602–13. Available from: <http://link.springer.com/10.1007/s003300050894> PMID: 10525875
 10. Maccariello E. Contrast induced nephropathy. Vol. 38, *Jornal brasileiro de nefrologia: 'orgao oficial de Sociedades Brasileira e Latino-Americana de Nefrologia*. Sociedade Brasileira de Nefrologia; 2016. p. 388–9. <https://doi.org/10.5935/0101-2800.20160062> PMID: 28001182
 11. McCullough PA. Contrast-Induced Acute Kidney Injury [Internet]. Vol. 51, *Journal of the American College of Cardiology*. Elsevier USA; 2008 [cited 2020 Mar 7]. p. 1419–28. Available from: <https://linkinghub.elsevier.com/retrieve/pii/S0735109708003537> <https://doi.org/10.1016/j.jacc.2007.12.035> PMID: 18402894
 12. Khwaja A. KDIGO Clinical Practice Guidelines for Acute Kidney Injury. *Nephron* [Internet]. 2012 Aug 7 [cited 2020 Mar 7]; 120(4):c179–84. Available from: <https://www.karger.com/Article/FullText/339789> <https://doi.org/10.1159/000339789> PMID: 22890468
 13. Levey AS, Inker LA, Coresh J. GFR estimation: From physiology to public health. Vol. 63, *American Journal of Kidney Diseases*. W.B. Saunders; 2014. p. 820–34. <https://doi.org/10.1053/j.ajkd.2013.12.006> PMID: 24485147
 14. Born GVR. Aggregation of blood platelets by adenosine diphosphate and its reversal. *Nature* [Internet]. 1962 [cited 2020 Sep 7]; 194(4832):927–9. Available from: <https://pubmed.ncbi.nlm.nih.gov/13871375/> <https://doi.org/10.1038/194927b0> PMID: 13871375
 15. O'Brien JR. Further observations on platelet aggregation induced by adenosine diphosphate thrombin and tri-ethyl tin. *J Clin Pathol*. 1963; 16(3):223–6. <https://doi.org/10.1136/jcp.16.3.223> PMID: 16811008
 16. Manna G La, Pancaldi LG, Capecechi A, Maska E, Comai G, Cappuccilli ML, et al. Risk for Contrast Nephropathy in Patients Undergoing Coronarography. *Artif Organs* [Internet]. 2010 May 7 [cited 2020 Mar 8]; 34(6):E193–9. Available from: <http://doi.wiley.com/10.1111/j.1525-1594.2009.00984.x>
 17. Sahin I, Karabulut A, Avci II, Okuyan E, Biter HI, Yildiz SS, et al. Contribution of platelets indices in the development of contrast-induced nephropathy. *Blood Coagul Fibrinolysis*. 2015 Apr 7; 26(3):246–9. <https://doi.org/10.1097/MBC.000000000000107> PMID: 24695089
 18. Ortega-Hernández J, Springall R, Sánchez-Muñoz F, Arana-Martinez J-C, González-Pacheco H, Bojalil R. Acute coronary syndrome and acute kidney injury: role of inflammation in worsening renal function. *BMC Cardiovasc Disord* [Internet]. 2017 Dec 26 [cited 2020 Mar 19]; 17(1):202. Available from: <http://bmccardiovascdisord.biomedcentral.com/articles/10.1186/s12872-017-0640-0> PMID: 28747177
 19. Marenzi G, Cosentino N, Bartorelli AL. Acute kidney injury in patients with acute coronary syndromes. Vol. 101, *Heart*. BMJ Publishing Group; 2015. p. 1778–85.
 20. Gasparyan AY. Aspirin and clopidogrel resistance: methodological challenges and opportunities. *Vasc Health Risk Manag* [Internet]. 2010 Mar 24 [cited 2017 Nov 23]; 6:109–12. Available from: <http://www.ncbi.nlm.nih.gov/pubmed/20448796> <https://doi.org/10.2147/vhrm.s9087> PMID: 20448796
 21. Gorog DA, Fuster V. Platelet function tests in clinical cardiology: Unfulfilled expectations. *J Am Coll Cardiol* [Internet]. 2013; 61(21):2115–29. Available from: <https://doi.org/10.1016/j.jacc.2012.11.080> PMID: 23541972
 22. Parodi G, Marcucci R, Valenti R, Gori AM, Migliorini A, Giusti B, et al. High residual platelet reactivity after clopidogrel loading and long-term cardiovascular events among patients with acute coronary syndromes undergoing PCI. *JAMA* [Internet]. 2011 Sep 21 [cited 2018 Oct 12]; 306(11):1215. Available from: <http://www.ncbi.nlm.nih.gov/pubmed/21934054> <https://doi.org/10.1001/jama.2011.1332> PMID: 21934054
 23. Cuisset T, Frere C, Quilici J, Morange P-E, Nait-Saidi L, Mielot C, et al. High post-treatment platelet reactivity is associated with a high incidence of myonecrosis after stenting for non-ST elevation acute

- coronary syndromes. *Thromb Haemost* [Internet]. 2007 Feb [cited 2017 Nov 2]; 97(2):282–7. Available from: <http://www.ncbi.nlm.nih.gov/pubmed/17264958> PMID: 17264958
24. Golukhova EZ, Grigoryan M V., Ryabinina MN, Bulaeva NI. Clinical and laboratory predictors of major adverse cardiac events in patients with ischemic heart disease following elective percutaneous coronary intervention. *Ration Pharmacother Cardiol* [Internet]. 2016; 12(5):528–35. Available from: <http://www.rpcardio.com/jour/article/view/1332>
 25. Uçar H, Gür M, Koyunsever NY, Şeker T, Türkoğlu C, Kaypaklı O, et al. Mean platelet volume is independently associated with renal dysfunction in stable coronary artery disease. *Platelets*. 2014; 25(4):274–8. <https://doi.org/10.3109/09537104.2013.805406> PMID: 23772896
 26. Gremmel T, Müller M, Steiner S, Seidinger D, Koppensteiner R, Kopp CW, et al. Chronic Kidney Disease Is Associated With Increased Platelet Activation and Poor Response to Antiplatelet Therapy [Internet]. [cited 2020 Mar 25]. Available from: https://pubmed.ncbi.nlm.nih.gov/23729489/?from_single_result=Chronic+kidney+disease+is+associated+with+increased+platelet+activation+and+poor+response+to+antiplatelet+therap
 27. Zdrojewski Z, Lizakowski S, Raszeja-Specht A, Skibowska A, Rutkowski B. Influence of spontaneous platelet aggregation on progression of glomerular disease. *Nephron*. 2002; 92(1):36–42. <https://doi.org/10.1159/000064462> PMID: 12187082
 28. Gasperetti CM, Gonias SL, Gimple LW, Powers ER. Platelet activation during coronary angioplasty in humans. *Circulation*. 1993; 88(6):2728–34. <https://doi.org/10.1161/01.cir.88.6.2728> PMID: 8252685
 29. Jiang J, Ji H-Y, Xie W-M, Ran L-S, Chen Y-S, Zhang C-T, et al. Could platelet-to-lymphocyte ratio be a predictor for contrast-induced nephropathy in patients with acute coronary syndrome? *Medicine (Baltimore)*. 2019 Aug; 98(32):e16801. <https://doi.org/10.1097/MD.00000000000016801> PMID: 31393410
 30. Tsai TT, Patel UD, Chang TI, Kennedy KF, Masoudi FA, Matheny ME, et al. Contemporary incidence, predictors, and outcomes of acute kidney injury in patients undergoing percutaneous coronary interventions: Insights from the NCDR cath-PCI registry. *JACC Cardiovasc Interv*. 2014 Jan; 7(1):1–9. <https://doi.org/10.1016/j.jcin.2013.06.016> PMID: 24456715
 31. Neves D, Belo A, Damásio AF, Carvalho J, Santos AR, Piçarra B, et al. Acute kidney injury in acute coronary syndromes—An important multifactorial consequence. *Rev Port Cardiol* [Internet]. 2016 Jul 1 [cited 2020 Mar 25]; 35(7–8):415–21. Available from: <https://linkinghub.elsevier.com/retrieve/pii/S0870255116301068> <https://doi.org/10.1016/j.repc.2016.04.008> PMID: 27374414
 32. 2014 ESC/EACTS Guidelines on myocardial revascularization. *Eur Heart J* [Internet]. 2014 Oct 1 [cited 2017 Aug 3]; 35(37):2541–619. Available from: <https://academic.oup.com/eurheartj/article-lookup/doi/10.1093/eurheartj/ehu278> PMID: 25173339
 33. Ranucci M, Castelvechio S, Menicanti L, Frigiola A, Pelissero G. Risk of Assessing Mortality Risk in Elective Cardiac Operations: Age, Creatinine, Ejection Fraction, and the Law of Parsimony. *Circulation* [Internet]. 2009 Jun 23 [cited 2017 Nov 3]; 119(24):3053–61. Available from: <http://www.ncbi.nlm.nih.gov/pubmed/19506110> <https://doi.org/10.1161/CIRCULATIONAHA.108.842393> PMID: 19506110
 34. Jain T, Shah S, Shah J, Jacobsen G, Khandelwal A. Contrast-induced nephropathy in STEMI patients with and without chronic kidney disease. *Crit Pathw Cardiol*. 2018; 17(1):25–31. <https://doi.org/10.1097/HPC.000000000000123> PMID: 29432373
 35. Thakar C V., Arrigain S, Worley S, Yared JP, Paganini EP. A clinical score to predict acute renal failure after cardiac surgery. *J Am Soc Nephrol*. 2005; 16(1):162–8. <https://doi.org/10.1681/ASN.2004040331> PMID: 15563569
 36. Mehran R, Aymong ED, Nikolsky E, Lasic Z, Iakovou I, Fahy M, et al. A simple risk score for prediction of contrast-induced nephropathy after percutaneous coronary intervention: development and initial validation. *J Am Coll Cardiol* [Internet]. 2004 Oct 6 [cited 2019 Nov 22]; 44(7):1393–9. Available from: <http://www.ncbi.nlm.nih.gov/pubmed/15464318> <https://doi.org/10.1016/j.jacc.2004.06.068> PMID: 15464318
 37. Trenk D, Stone GW, Gawaz M, Kastrati A, Angiolillo DJ, Müller U, et al. A Randomized Trial of Prasugrel Versus Clopidogrel in Patients With High Platelet Reactivity on Clopidogrel After Elective Percutaneous Coronary Intervention With Implantation of Drug-Eluting Stents. *J Am Coll Cardiol* [Internet]. 2012 Jun 12 [cited 2017 Nov 3]; 59(24):2159–64. Available from: <http://www.ncbi.nlm.nih.gov/pubmed/22520250> <https://doi.org/10.1016/j.jacc.2012.02.026> PMID: 22520250
 38. Price MJ, Berger PB, Teirstein PS, Tanguay J-F, Angiolillo DJ, Spriggs D, et al. Standard- vs High-Dose Clopidogrel Based on Platelet Function Testing After Percutaneous Coronary Intervention. *JAMA* [Internet]. 2011 Mar 16 [cited 2017 Nov 2]; 305(11):1097. Available from: <http://www.ncbi.nlm.nih.gov/pubmed/21406646> <https://doi.org/10.1001/jama.2011.290> PMID: 21406646
 39. Montalescot G, Range G, Silvain J, Bonnet J-L, Boueri Z, Barthelemy O, et al. High On-Treatment Platelet Reactivity as a Risk Factor for Secondary Prevention After Coronary Stent Revascularization: A Landmark Analysis of the ARCTIC Study. *Circulation* [Internet]. 2014 May 27 [cited 2017 Nov 3]; 129

(21):2136–43. Available from: <http://www.ncbi.nlm.nih.gov/pubmed/24718568> <https://doi.org/10.1161/CIRCULATIONAHA.113.007524> PMID: 24718568

40. Sibbing D, Aradi D, Jacobshagen C, Gross L, Trenk D, Geisler T, et al. Guided de-escalation of anti-platelet treatment in patients with acute coronary syndrome undergoing percutaneous coronary intervention (TROPICAL-ACS): a randomised, open-label, multicentre trial. *Lancet* [Internet]. 2017 Oct [cited 2017 Nov 3]; 390(10104):1747–57. Available from: <http://linkinghub.elsevier.com/retrieve/pii/S0140673617321554> [https://doi.org/10.1016/S0140-6736\(17\)32155-4](https://doi.org/10.1016/S0140-6736(17)32155-4) PMID: 28855078