



Published in final edited form as:

*Mod Pathol.* 2018 February ; 31(2): 288–298. doi:10.1038/modpathol.2017.126.

## Composite Analysis of Immunological and Metabolic Markers Defines Novel Subtypes of Triple Negative Breast Cancer

Thomas A. Adams<sup>1</sup>, Paris J. Vail<sup>2</sup>, Amanda Ruiz<sup>2</sup>, Mehri Mollae<sup>3</sup>, Peter A. McCue<sup>3</sup>, Erik S. Knudsen<sup>2</sup>, and Agnieszka K. Witkiewicz<sup>1,2,\*</sup>

<sup>1</sup>University of Arizona, Department of Pathology, Tucson, Arizona, United States

<sup>2</sup>University of Arizona Cancer Center, Tucson, Arizona, United States

<sup>3</sup>Thomas Jefferson University, Department of Pathology, Philadelphia, Pennsylvania, United States

### Abstract

Cancer biology is influenced by the tumor microenvironment that impacts on disease prognosis and therapeutic intervention. The inter-relationship of tumor infiltrating lymphocytes, immune response regulators, and a glycolytic tumor environment was evaluated in a cohort of 183 largely consecutive patients with triple negative breast cancer diagnosis. High levels of tumor infiltrating lymphocytes were associated with improved survival of triple negative breast cancer cases. However, elevated levels of PD-L1, CD163, and FOXP3 were individually associated with significantly decreased overall survival. These three determinants were significantly correlated, and could serve to differentiate the prognostic significance of tumor infiltrating lymphocytes. Interestingly, a glycolytic tumor environment, as determined by the expression of MCT4 in the tumor stroma, was associated with the immune evasive environment and poor prognosis. Clustering of all markers defined four distinct triple negative breast cancer subtypes that harbored prognostic significance in multi-variate analysis. Immune and metabolic markers stratify triple negative breast cancer into subtypes that have prognostic significance and implications for therapies targeting immune checkpoints and tumor metabolism.

### Introduction

Triple negative breast cancer (triple negative breast cancer) accounts for ~15% of breast cancers and is defined by a lack of expression of estrogen receptor (ER), progesterone receptor (PR), and HER2/neu (1). triple negative breast cancer affects younger patients (less than 50 years), is more prevalent in African-American women, and is more aggressive than breast tumors of other molecular subtypes (1–8). In contrast to ER positive or HER2 positive breast carcinomas, there are no approved molecularly targeted therapies for triple negative breast cancer (9–11). As a result, triple negative breast cancer treatment has remained

Users may view, print, copy, and download text and data-mine the content in such documents, for the purposes of academic research, subject always to the full Conditions of use: [http://www.nature.com/authors/editorial\\_policies/license.html#terms](http://www.nature.com/authors/editorial_policies/license.html#terms)

\*Correspondence: Agnieszka K Witkiewicz, University of Arizona Cancer Center, 1515 N Campbell Avenue, 4963, Tucson, AZ 85724, awitki@email.arizona.edu.

dependent on the efficacy of conventional chemotherapy, radiation, and surgery. Previous studies have indicated that tumor infiltrating lymphocytes are over-represented in triple negative breast cancers compared to other breast cancer subtypes (12–14). Given the success of immunotherapeutic agents in melanoma and lung cancer (15, 16), there is growing interest in the potential for immunotherapeutic strategies to treat breast cancer. It has been hypothesized that these strategies would be effective in patients whose tumors have a brisk lymphocytic infiltrate (12, 17). The International tumor infiltrating lymphocytes Working Group 2014 provided a framework for enumerating tumor infiltrating lymphocytes, and subsequent work has shown agreement between pathologists in the use of these recommendations to define significant tumor infiltrating lymphocytes (12, 18). The degree of lymphocytic infiltration assessed by routine histology has been shown to have predictive and prognostic value in triple negative breast cancer (18).

Tumor biology is influenced by the intrinsic microenvironment and the host immune response. The development of immune checkpoint inhibitors provides an opportunity to augment the antitumor immune response that has proved effective in multiple clinical studies. PD-1 is a checkpoint molecule in the immune response and is expressed on T-cells (19). PD-L1, a ligand for PD-1, is reported to be expressed on triple negative breast cancer cells as well as infiltrating lymphocytes and thought to be a mechanism for evading the immune response to tumor specific T-cells (19, 20). Immune modulatory agents, such as PD-1 and PD-L1 inhibitors, have shown activity in melanoma and bladder cancer. Recent studies involving triple negative breast cancer have shown similar patterns of response and adverse events as described in melanoma (21–23).

Importantly in tumors, there are other determinants of tumor-associated immune suppression including regulatory T cells, which express FOXP3, and M2 macrophages, marked by CD163 (24, 25). Regulatory T cells, a unique subset of CD4+ helper T cells of the CD4+/CD25+ phenotype, can suppress proliferation and cytokine secretion of effector T lymphocytes through immunoregulation (24). The most specific and reliable marker of regulatory T cells is FOXP3, and elevated FOXP3 lymphocytes are thought to contribute to tumor immune evasion in breast cancer (24). Tumor associated macrophages are alternatively activated macrophages that enhance tumor progression by promoting tumor cell invasion, migration, and angiogenesis (25). Tumor associated macrophages have an anti-inflammatory function similar to M2 macrophages. Expression of the CD163 antigen is a highly specific marker for M2 macrophages (25).

The nature of the immune infiltrate is believed to be related to both the innate immunogenicity of the tumor and the tumor microenvironment. Neo-epitopes and the presentation of non-self antigens by the tumor represents one of the key drivers of antitumor immune response (26, 27). However, it is becoming increasingly clear that tumors can develop an environmental niche that influences the ability of lymphocytes to reach their targets and modulate the immune infiltrate (28). In particular, the metabolic state of a tumor can influence immune engagement. A subset of tumor cells preferentially metabolize pyruvate into lactic acid regardless of the oxygen concentration (29). To export metabolic waste products, rapidly growing tumor cells overexpress proteins to allow for extrusion of products such as carbonic anhydrases and monocarboxylate transporters (MCTs) (29–31).

Interestingly, triple negative breast cancer were the most glycolytic of the breast tumors in a study of glycolytic markers that included MCT4 (29). MCT4 was of prognostic significance and was associated with decreased overall survival (29, 32). Inhibitors targeting glycolysis and monocarboxylate transporters are currently in pharmacologic development (29). In the present study, we investigated the relationship between immune response regulators (PD-L1, FOXP3, and CD163), glycolytic metabolism (MCT4), tumor infiltrating lymphocytes, and their association with survival in triple negative breast cancers.

## Materials and Methods

### Study population and tumor microarray construction

Study cases were obtained from surgical pathology files at Thomas Jefferson University with Institutional Review Board approval. The tissue microarrays were prepared from 180 largely consecutive patients with triple negative breast cancer. Clinical and treatment information was extracted by chart review. Clinicopathologic data included age, race, tumor size, stage, histologic grade, lymph node status, and overall survival (see Table 1). Treatment information could be obtained for 108 patients. For inclusion in this study as triple negative breast cancer, expressions of estrogen and progesterone receptors were not detected or were present in less than 1% of tumor cells, with a satisfactory positive control. HER2 was scored 0–1+ or 2+, and an absence of HER2 amplification by fluorescent in situ hybridization was required for negativity. Clinical and pathological variables were determined following well-established criteria. All triple negative breast cancer were graded according to the Elston-Ellis method; lymphovascular invasion was classified as either present or absent. The tumor tissue microarrays were constructed using a tissue arrayer (Veridiam). Two tissue cores (0.6 µm diameter) were sampled from each block to account for tumor and tissue heterogeneity and transferred to the recipient block.

### Immunostaining

Immunohistochemistry was performed as described previously (32, 33) on 4-mm tissue microarrays sections using a standard avidin–biotin immunoperoxidase method with antibodies specific for CD163 (Cell Marque, prediluted), FOXP3 (Abcam, dilution 1:200), PD-L1 (Cell Signaling, dilution 1:600), and MCT4 (Santa Cruz, dilution 1:250). All stains were validated using recommended tissue controls, and evaluated for correct compartment specific staining by pathologists with experience in evaluating the indicated markers. Staining was performed on either a Dako or Ventana Benchmark automated immunohistochemical stainers.

### Tissue microarrays scoring and statistical analysis

After staining, positive cells were counted and converted to a percentage of the total counted cells in a given field and expression of all examined markers was categorized as low or high based on the median percentage of positive cells. Stromal MCT4 staining was scored semi-quantitatively as negative (0, no staining), weak (1, either diffuse weak staining or strong staining in less than 30% of stromal cells per core), or strong (2, defined as strong staining of 30% or more of the stromal cells). Data were spot-checked for consensus and entered into a relational database by a third-party not affiliated with the study. Correlation between

markers was obtained using the Spearman correlation method. Kaplan–Meier curves for both independent as well as combined markers were obtained using the survival package in R statistical software (34). Statistical significance and HR along with 95% confidence intervals for the Kaplan–Meier curves was established using the log-rank p-value obtained from Cox proportional hazard regression analysis. A K-means clustering analysis was used for composite analysis of immune markers using R statistical software.

### **Tumor-infiltrating lymphocytes**

Tumor infiltrating lymphocytes were assessed based on criteria developed by International tumor infiltrating lymphocytes Working Group (18). Full face H&E sections of the blocks used for the tissue microarrays construction were evaluated by a single pathologist. Tumor infiltrating lymphocytes were assessed as <5% or to the closest 5% increment. It has been previously reported that many studies evaluating the prognostic significance of tumor infiltrating lymphocytes have used a cutoff of 50-60% to define lymphocyte predominant breast cancer (12). In this study, 0-10% stromal tumor infiltrating lymphocytes were scored as 0, 10-50% as 1, and >50% as 2.

## **Results**

### **Tumor infiltrating lymphocytes in triple negative breast cancer are associated with improved survival**

The degree of immune response is a key aspect of the tumor immune milieu and was characterized by enumerating tumor infiltrating lymphocytes. Stromal tumor infiltrating lymphocytes were evaluated on full face hematoxylin and eosin stained sections from the blocks used for tissue microarrays construction by a pathologist using established scoring criteria (35). This triple negative breast cancer cohort is derived from patients who underwent surgical resection in the absence of neoadjuvant therapy (Table 1). A diverse density of tumor infiltrating lymphocytes was observed in the tissues as illustrated by the representative micrographs (Fig. 1A). Subset of tumors was largely devoid of lymphocytic infiltrate in the stroma. Others exhibited intermediate or high numbers of tumor infiltrating lymphocytes. The density of tumor infiltrating lymphocytes was evaluated for association with survival. High tumor infiltrating lymphocytes in the local tumor environment were associated with improved survival versus low tumor infiltrating lymphocytes based on Kaplan–Meier analysis. The improved survival was most pronounced comparing low (score 0) versus high levels of tumor infiltrating lymphocytes (score 2) (Fig. 1B, left), but it was also observed when comparing low levels versus intermediate and high levels (score 0 vs. 1, 2) (Fig. 1B, right).

### **Multiple immune-suppressive mechanisms are observed in triple negative breast cancer**

Expression of differing immune effectors within the tumor environment may reflect distinct mechanisms of immune suppression and have relevance to the utilization of immunotherapy in triple negative breast cancer.

Staining for PD-L1 showed substantial variance in the relative number of cells staining positively among triple negative breast cancer cases (Fig. 2A). In univariate analysis,

elevated levels of PD-L1 staining in the triple negative breast cancer tumor cells were associated with significantly decreased overall survival (Fig. 2A), suggesting that suppression of immune function is associated with poor-prognosis in triple negative breast cancer. FOXP3 staining highlighted regulatory T cell lymphocytes, and elevated levels of FOXP3 staining were associated with significantly decreased overall survival by Kaplan-Meier analysis (Fig. 2B). CD163 staining highlighted macrophages in the tumor cellular environment was also associated with significantly decreased overall survival by Kaplan-Meier analysis (Fig. 2C).

That each of the immune-suppressive markers was associated with poor-prognosis, which suggests that they may be correlated in the tumor cases. Spearman correlation analysis demonstrated that there was a high-level of correlation between CD163, PD-L1, and FOXP3 ( $p < 0.001$  for all) (Fig. 3A). In contrast, the correlation with tumor infiltrating lymphocytes was not significant ( $p = 0.09$  for PD-L1,  $p = 0.15$  for FOXP3, and  $p = 0.13$  for CD163). Since the levels of tumor infiltrating lymphocytes and the immune-regulatory markers were independent, pair-wise comparisons were employed to differentiate the prognostic significance within the low tumor infiltrating lymphocytes sub-group (Fig. 3B-D). These data showed that high FOXP3 (Fig. 3C) and high CD163 (Fig. 3D) in a low tumor infiltrating lymphocyte environment denote subgroups of patients with a particularly poor-prognosis.

#### **Relevance of a glycolytic tumor environment to immunological features of the tumor**

Metabolic preference within the tumor microenvironment is known to influence the immunological milieu (36). MCT4 is critical for lactate export and its high expression defines glycolytic tumors. As shown in the representative micrographs, distinct levels of MCT4 were noted in the tumor stroma (Fig. 4A). Elevated levels of stromal MCT4 staining were associated with significantly decreased overall survival (Fig. 4A). To assess how stromal MCT4 expression impacts on the immune milieu, the levels of CD163, PD-L1, and FOXP3 were stratified by MCT4 levels. These analyses demonstrated that high-levels of MCT4 were significantly associated with increased levels of each of the immune-suppressive markers (Fig. 4B). This finding suggests that the metabolic features of the tumor microenvironment may play a pivotal role in directing the immunological features of triple negative breast cancer.

#### **Composite analysis of immune and metabolic markers define novel prognostic subtypes in triple negative breast cancer**

To concordantly analyze the immune and metabolic features of the cases, K-means clustering analysis was used to define four distinct triple negative breast cancer subtypes (Fig. 5A). Cluster 1 and cluster 2 showed low levels of immunosuppressive markers PD-L1 and FOXP3, and they harbored increased tumor infiltrating lymphocytes. By Kaplan-Meier analysis, these clusters had an overall good prognosis (Fig. 5B). In contrast, cluster 3 and cluster 4 showed increased staining for PD-L1, FOXP3, and stromal MCT4 (Fig. 5A). Both of these clusters showed poor survival (Fig. 5B). Cluster 3 was enriched for CD163 macrophages with minimal tumor infiltrating lymphocytes, while cluster 4 demonstrated high tumor infiltrating lymphocytes with minimal CD163 expression (Fig. 5B). These data

were largely recapitulated in a sub-group analysis of patients for whom we had adjuvant chemotherapy treatment information. (Supplemental Figure 1). In univariate analysis the clusters were significantly associated with overall survival, both including all clusters (log-rank) or in pair-wise comparison (clusters 1,2 vs. 3,4). In multivariate analysis, the K-means cluster group determined by combined marker expression showed strong prognostic significance, with a hazard ratio greater than for tumor stage and histologic grade (Fig. 5C). Together, these data suggest that composite analysis of immunological and metabolic determinants of the tumor microenvironment could define important subgroups of triple negative breast cancer.

## Discussion

In this study, we investigated the expression of immune markers PD-L1, FOXP3, CD163, and tumor infiltrating lymphocytes, as well as the metabolic marker MCT4 in a cohort of triple negative breast cancer patients.

The finding of improved survival with high level of stromal tumor infiltrating lymphocytes is consistent with other studies in triple negative breast cancer. Tumor infiltrating lymphocytes have generally been associated with better prognosis and response to neoadjuvant therapy in triple negative breast cancer (35, 37–42). In recent meta-analysis studies higher tumor infiltrating lymphocyte levels in pre-treatment biopsy indicated higher pathologic complete response (pCR) rates for neoadjuvant chemotherapy and improved survival (43, 44). Therefore, the enumeration of tumor infiltrating lymphocytes can be both a predictive marker of response to chemotherapy and prognostic marker in triple negative breast cancer. We focused on stromal tumor infiltrating lymphocytes in our analysis as suggested by the international tumor infiltrating lymphocytes working group (18); however, others have also shown prognostic significance of tumor infiltrating lymphocytes within the tumor bed (45).

Since tumor infiltrating lymphocytes represent a complex population of lymphocytes, there is considerable interest in defining the immunological features of tumor infiltrating lymphocytes. Here, we employed FOXP3 as a marker for regulatory T cells and CD163 as a marker of type 2 macrophages. These immune cells are generally immunosuppressive, and are believed to contribute to immune evasion by tumor cells. regulatory T cells can suppress proliferation and cytokine secretion by effector T lymphocytes and could contribute to overall tumor infiltrating lymphocyte density within a tumor (24). CD163 expressing macrophages are alternatively activated macrophages that enhance tumor progression by promoting tumor cell invasion, migration, and angiogenesis (25). Elevated levels of regulatory T cell lymphocytes and CD163 expressing macrophages were associated with decreased survival in this study and there was a significant correlation between the presence of regulatory T cell cells and CD163 positive macrophages. These findings suggest that features of a specific tumor and/or its environment elicit multiple mechanisms of local immune suppression.

There is considerable interest in understanding the nature of immunosuppressive mechanisms in triple negative breast cancer that could be specifically targeted to yield effective treatment. PD-L1 is a target of the therapeutic antibody Nivolumab that is FDA

approved for specific cancer indications. In our study PD-L1 levels were strongly associated with shorter overall survival. While there have been conflicting reports regarding the impact on PD-L1 expression on prognosis, several studies show decreased survival in cases with high PD-L1 staining as evaluated by immunohistochemistry, concordant with our study. For example, In a study of 650 cases of breast cancer, PD-L1 was expressed in 23.4% of cases and was associated with negative overall survival (46). Similarly, a recent meta-analysis of PD-L1 in breast carcinoma, indicated that PD-L1 expression was marker of poor prognosis (47). Since PD-L1 is expressed in a significant percentage of triple negative breast cancer, it represents a potential therapeutic target (20), and numerous phase I/II clinical trials testing antibodies against PD-1 or PD-L1 are ongoing (48). Interestingly, the PD-L1 gene (CD274) is amplified in a significant subset of triple negative breast cancer cases. However, in analysis of data from TCGA this event did not yield a significant increase in transcript expression, suggesting non-genetic regulation of PD-L1 expression. Therefore, direct analysis of the protein may be a preferable determinant of PD-L1 function within the tumor compartment. In many triple negative breast cancer cases, PD-L1 expression was associated with the presence of CD163 positive macrophages and FOXP3 positive regulatory T cells. This finding suggests that coordinate targeting of multiple immunological features of triple negative breast cancer may be required to mount an effective antitumor response. Consistent with this concept, it has been suggested that a combined strategy to block PD-L1/PD-1 along with modalities to deplete regulatory T cell cells may be a reasonable therapeutic option (24). Similarly, there are ongoing approaches to selectively target tumor associated macrophages (49, 50).

The cancer microenvironment was postulated to modulate immune cell infiltration and immune cell function(36, 51, 52). Interestingly, triple negative breast cancer tumors analyzed in this study showed strong correlation between distinct immunosuppressive features. This finding supports the hypothesis that the tumor niche yields a multi-factorial impact on the immune system. Glycolytic metabolic preference of the tumor microenvironment represents one of the potential mechanisms promoting immunosuppressive infiltrate (53, 54). Glycolytic tumors express transporters such as MCT4 that facilitate extracellular removal of lactate to support metabolism. This has the net effect of acidifying the local tumor environment (55). Multiple studies have shown that MCT4 expression in the tumor microenvironment is associated with poor-prognosis (56, 57). How MCT4 impacts on the local immunological milieu remains poorly understood. However, lactic acid can skew macrophages toward the anti-inflammatory tumor-promoting M2 phenotype (58). This may represent a possible mechanistic link for the relationship between the metabolic and immune environment. Heretofore the relationship of MCT4 with PD-L1 and FOXP3 in triple negative breast cancer has not been determined, but findings from our study suggest that metabolic features of the tumor environment could have a broad influence on the composition of immune infiltrate and related therapeutic sensitivities.

Given the complexity of tumor biology, it is increasingly important to consider the intersection of different processes in delineating tumor subtypes. Integrating the data in this study defined four subtypes of triple negative breast cancer based on their relative tumor infiltrating lymphocyte, immune suppressive features, and MCT4 status. The subsets identified in this manner may have important implications for the use of immunotherapy in

the treatment of triple negative breast cancer. Cluster 1 had high-levels of tumor infiltrating lymphocytes, but relatively low levels of PD-L1 and FOXP3. This suggests that potentially inhibiting CTLA4 or other approaches to activate the immune system could be effective in this subtype. Cluster 2 harbored high levels of tumor infiltrating lymphocytes, but had high levels of PD-L1 with relatively scant presentation of FOXP3 and CD163 positive cells, suggesting the utility of agents inhibiting PD1/PD-L1. Interestingly, both clusters had a more favorable prognosis in the cohort analyzed. Clusters 3 and 4 had poor prognosis and were characterized by a glycolytic environment and the presence of multiple immunosuppressive features. Further study will be required to determine if the association between MCT4 and the nature of the immune system is causal or casual. Since overall survival is typically associated with metastatic spread, it will also be critically important to evaluate how the markers studied herein directly contribute to the invasive potential and ability to colonize at distant sites. Since cluster 3 was largely devoid of tumor infiltrating lymphocytes it would require some means to engage lymphocytes (e.g. through vaccine) that would couple with targeting regulatory T cells and tumor associated macrophages. Lastly, cluster 4 showed high tumor infiltrating lymphocytes with minimal CD163 expression, suggesting that immune checkpoint therapy could be effective in this subtype in conjunction with suppression of regulatory T cells. Thus, the subgroups defined have unique features that may present opportunities for targeted therapy, and suggest that a coordinate assessment of immunological features may be important for effective use of immunotherapy in triple negative breast cancer. Furthermore, functional research focused on interrelated immune and metabolic pathways could be fruitful in increasing the breadth of antitumor immunologic responses.

## Supplementary Material

Refer to Web version on PubMed Central for supplementary material.

## References

1. Badve S, Dabbs DJ, Schnitt SJ, et al. Basal-like and triple-negative breast cancers: a critical review with an emphasis on the implications for pathologists and oncologists. *Mod Pathol.* 2011; 24:157–67. [PubMed: 21076464]
2. Haffty BG, Yang Q, Reiss M, et al. Locoregional relapse and distant metastasis in conservatively managed triple negative early-stage breast cancer. *J Clin Oncol.* 2006; 24:5652–7. [PubMed: 17116942]
3. Reis-Filho JS, Tutt AN. Triple negative tumours: a critical review. *Histopathology.* 2008; 52:108–18. [PubMed: 18171422]
4. Thike AA, Cheok PY, Jara-Lazaro AR, et al. Triple-negative breast cancer: clinicopathological characteristics and relationship with basal-like breast cancer. *Mod Pathol.* 2010; 23:123–33. [PubMed: 19855377]
5. Dent R, Trudeau M, Pritchard KI, et al. Triple-negative breast cancer: clinical features and patterns of recurrence. *Clin Cancer Res.* 2007; 13:4429–34. [PubMed: 17671126]
6. Bauer KR, Brown M, Cress RD, Parise CA, Caggiano V. Descriptive analysis of estrogen receptor (ER)-negative, progesterone receptor (PR)-negative, and HER2-negative invasive breast cancer, the so-called triple-negative phenotype: a population-based study from the California cancer Registry. *Cancer.* 2007; 109:1721–8. [PubMed: 17387718]

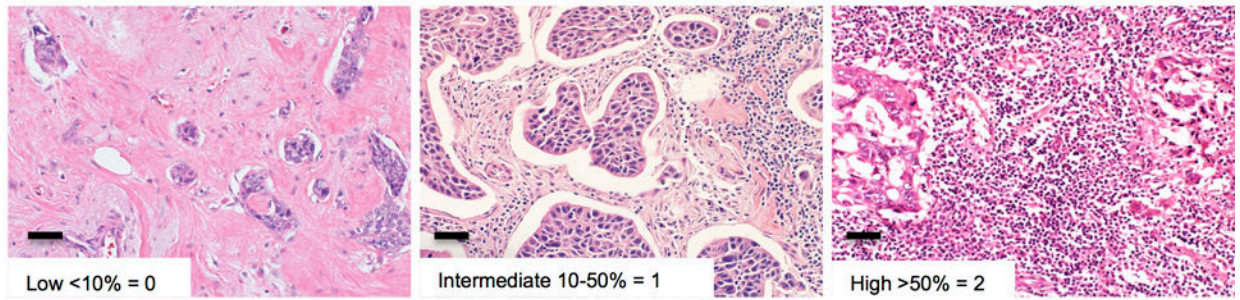


7. Harris LN, Broadwater G, Lin NU, et al. Molecular subtypes of breast cancer in relation to paclitaxel response and outcomes in women with metastatic disease: results from CALGB 9342. *Breast Cancer Res.* 2006; 8:R66. [PubMed: 17129383]
8. Morris GJ, Naidu S, Topham AK, et al. Differences in breast carcinoma characteristics in newly diagnosed African-American and Caucasian patients: a single-institution compilation compared with the National Cancer Institute's Surveillance, Epidemiology, and End Results database. *Cancer.* 2007; 110:876–84. [PubMed: 17620276]
9. Li X, Wetherilt CS, Krishnamurti U, et al. Stromal PD-L1 Expression Is Associated With Better Disease-Free Survival in Triple-Negative Breast Cancer. *Am J Clin Pathol.* 2016; 146:496–502. [PubMed: 27686176]
10. Millar EK, Graham PH, O'Toole SA, et al. Prediction of local recurrence, distant metastases, and death after breast-conserving therapy in early-stage invasive breast cancer using a five-biomarker panel. *J Clin Oncol.* 2009; 27:4701–8. [PubMed: 19720911]
11. Yam C, Mani SA, Moulder SL. Targeting the Molecular Subtypes of Triple Negative Breast Cancer: Understanding the Diversity to Progress the Field. *Oncologist.* 2017
12. Swisher SK, Wu Y, Castaneda CA, et al. Interobserver Agreement Between Pathologists Assessing Tumor-Infiltrating Lymphocytes (TILs) in Breast Cancer Using Methodology Proposed by the International TILs Working Group. *Annals of Surgical Oncology.* 2016; 23:2242–8. [PubMed: 26965699]
13. Garcia-Tejido P, Cabal ML, Fernandez IP, Perez YF. Tumor-Infiltrating Lymphocytes in Triple Negative Breast Cancer: The Future of Immune Targeting. *Clin Med Insights Oncol.* 2016; 10:31–9. [PubMed: 27081325]
14. Stanton SE, Disis ML. Clinical significance of tumor-infiltrating lymphocytes in breast cancer. *J Immunother Cancer.* 2016; 4:59. [PubMed: 27777769]
15. Page DB, Postow MA, Callahan MK, Allison JP, Wolchok JD. Immune modulation in cancer with antibodies. *Annu Rev Med.* 2014; 65:185–202. [PubMed: 24188664]
16. Peggs KS, Quezada SA, Korman AJ, Allison JP. Principles and use of anti-CTLA4 antibody in human cancer immunotherapy. *Curr Opin Immunol.* 2006; 18:206–13. [PubMed: 16464564]
17. Luen SJ, Savas P, Fox SB, Salgado R, Loi S. Tumour-infiltrating lymphocytes and the emerging role of immunotherapy in breast cancer. *Pathology.* 2017; 49:141–55. [PubMed: 28049579]
18. Salgado R, Denkert C, Demaria S, et al. The evaluation of tumor-infiltrating lymphocytes (TILs) in breast cancer: recommendations by an International TILs Working Group 2014. *Ann Oncol.* 2015; 26:259–71. [PubMed: 25214542]
19. Boussiotis VA. Molecular and Biochemical Aspects of the PD-1 Checkpoint Pathway. *The New England journal of medicine.* 2016; 375:1767–78. [PubMed: 27806234]
20. Mittendorf EA, Philips AV, Meric-Bernstam F, et al. PD-L1 expression in triple-negative breast cancer. *Cancer Immunol Res.* 2014; 2:361–70. [PubMed: 24764583]
21. Disis ML, Stanton SE. Triple-negative breast cancer: immune modulation as the new treatment paradigm. *American Society of Clinical Oncology educational book American Society of Clinical Oncology Meeting.* 2015:e25–30. [PubMed: 25993181]
22. Nanda R, Chow LQ, Dees EC, et al. Pembrolizumab in Patients With Advanced Triple-Negative Breast Cancer: Phase Ib KEYNOTE-012 Study. *J Clin Oncol.* 2016; 34:2460–7. [PubMed: 27138582]
23. Cimino-Mathews A, Foote JB, Emens LA. Immune targeting in breast cancer. *Oncology (Williston Park, NY).* 2015; 29:375–85.
24. Li Z, Dong P, Ren M, et al. PD-L1 Expression Is Associated with Tumor FOXP3(+) Regulatory T-Cell Infiltration of Breast Cancer and Poor Prognosis of Patient. *J Cancer.* 2016; 7:784–93. [PubMed: 27162536]
25. Medrek C, Ponten F, Jirstrom K, Leandersson K. The presence of tumor associated macrophages in tumor stroma as a prognostic marker for breast cancer patients. *BMC Cancer.* 2012; 12:306. [PubMed: 22824040]
26. Bobisse S, Foukas PG, Coukos G, Harari A. Neoantigen-based cancer immunotherapy. *Ann Transl Med.* 2016; 4:262. [PubMed: 27563649]

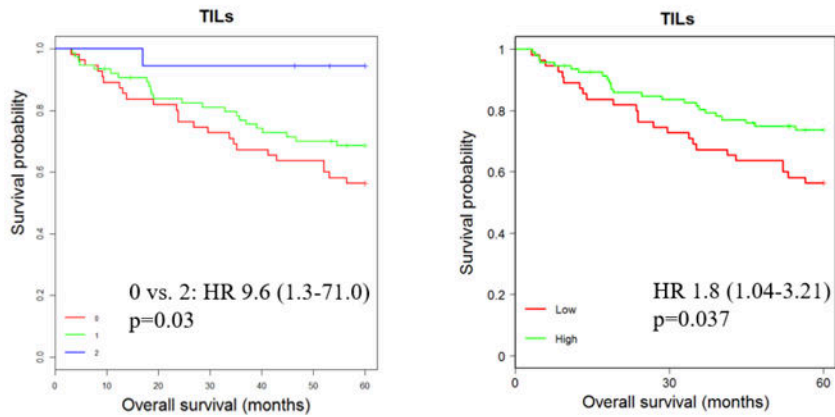
27. Shigehisa Kitano AI. Cancer Neoantigens: A Promising Source of Immunogens for Cancer Immunotherapy. *Journal of Clinical and Cellular Immunology*. 2015;06.
28. Hutcheson J, Balaji U, Porembka MR, et al. Immunologic and Metabolic Features of Pancreatic Ductal Adenocarcinoma Define Prognostic Subtypes of Disease. *Clin Cancer Res*. 2016; 22:3606–17. [PubMed: 26858311]
29. Doyen J, Trastour C, Ettore F, et al. Expression of the hypoxia-inducible monocarboxylate transporter MCT4 is increased in triple negative breast cancer and correlates independently with clinical outcome. *Biochem Biophys Res Commun*. 2014; 451:54–61. [PubMed: 25058459]
30. Supuran CT. Carbonic anhydrases: novel therapeutic applications for inhibitors and activators. *Nat Rev Drug Discov*. 2008; 7:168–81. [PubMed: 18167490]
31. Halestrap AP. The monocarboxylate transporter family—Structure and functional characterization. *IUBMB Life*. 2012; 64:1–9. [PubMed: 22131303]
32. Witkiewicz AK, Whitaker-Menezes D, Dasgupta A, et al. Using the “reverse Warburg effect” to identify high-risk breast cancer patients: stromal MCT4 predicts poor clinical outcome in triple-negative breast cancers. *Cell Cycle*. 2012; 11:1108–17. [PubMed: 22313602]
33. Knudsen E, Vail P, Balaji U, et al. Stratification of Pancreatic Ductal Adenocarcinoma: Combinatorial Genetic, Stromal, and Immunological Markers. *Clin Cancer Res*. 2017
34. R\_Core\_Team. R: A Language and environment for statistical computing. Vienna, Austria: R Foundation For Statistical Computing; 2014.
35. Loi S, Michiels S, Salgado R, et al. Tumor infiltrating lymphocytes are prognostic in triple negative breast cancer and predictive for trastuzumab benefit in early breast cancer: results from the FinHER trial. *Annals of oncology : official journal of the European Society for Medical Oncology/ ESMO*. 2014; 25:1544–50.
36. Pilon-Thomas S, Kodumudi KN, El-Kenawi AE, et al. Neutralization of Tumor Acidity Improves Antitumor Responses to Immunotherapy. *Cancer Res*. 2016; 76:1381–90. [PubMed: 26719539]
37. Pruneri G, Vingiani A, Bagnardi V, et al. Clinical validity of tumor-infiltrating lymphocytes analysis in patients with triple-negative breast cancer. *Ann Oncol*. 2016; 27:249–56. [PubMed: 26598540]
38. Perez EA, Ballman KV, Tenner KS, et al. Association of Stromal Tumor-Infiltrating Lymphocytes With Recurrence-Free Survival in the N9831 Adjuvant Trial in Patients With Early-Stage HER2-Positive Breast Cancer. *JAMA Oncol*. 2016; 2:56–64. [PubMed: 26469139]
39. Ali HR, Provenzano E, Dawson SJ, et al. Association between CD8+ T-cell infiltration and breast cancer survival in 12,439 patients. *Ann Oncol*. 2014; 25:1536–43. [PubMed: 24915873]
40. Dieci MV, Mathieu MC, Guarneri V, et al. Prognostic and predictive value of tumor-infiltrating lymphocytes in two phase III randomized adjuvant breast cancer trials. *Ann Oncol*. 2015; 26:1698–704. [PubMed: 25995301]
41. Loi S, Sirtaine N, Piette F, et al. Prognostic and predictive value of tumor-infiltrating lymphocytes in a phase III randomized adjuvant breast cancer trial in node-positive breast cancer comparing the addition of docetaxel to doxorubicin with doxorubicin-based chemotherapy: BIG 02-98. *J Clin Oncol*. 2013; 31:860–7. [PubMed: 23341518]
42. Dieci MV, Criscitiello C, Goubar A, et al. Prognostic value of tumor-infiltrating lymphocytes on residual disease after primary chemotherapy for triple-negative breast cancer: a retrospective multicenter study. *Ann Oncol*. 2014; 25:611–8. [PubMed: 24401929]
43. Mao Y, Qu Q, Zhang Y, et al. The value of tumor infiltrating lymphocytes (TILs) for predicting response to neoadjuvant chemotherapy in breast cancer: a systematic review and meta-analysis. *PLoS One*. 2014; 9:e115103. [PubMed: 25501357]
44. Wang K, Xu J, Zhang T, Xue D. Tumor-infiltrating lymphocytes in breast cancer predict the response to chemotherapy and survival outcome: A meta-analysis. *Oncotarget*. 2016; 7:44288–98. [PubMed: 27329588]
45. Krishnamurti U, Wetherilt CS, Yang J, Peng L, Li X. Tumor-infiltrating lymphocytes are significantly associated with better overall survival and disease-free survival in triple-negative but not estrogen receptor-positive breast cancers. *Hum Pathol*. 2017; 64:7–12. [PubMed: 28153508]
46. Muenst ARS S, Gao F, et al. Expression of programmed death ligand 1 (PD-L1) is associated with poor prognosis in human breast cancer. *Breast Cancer Res Treat*. 2014

47. Yawen Guo PY, Zeming Liu, et al. Prognostic and Clinicopathological Value of Programmed Death Ligand-1 in Breast Cancer: A Meta-Analysis. PLoS ONE. 2016; 11(5):e0156323. doi: 101371/journal.pone0156323. [PubMed: 27227453]
48. Xue Li ML, Zhen Lian, et al. Prognostic Role of Programmed Death Ligand-1 Expression in Breast Cancer: A Systematic Review and Meta-Analysis. Targ Oncol. 2016 doi: 101007/s11523-016-0451-8.
49. Condeelis J, Pollard JW. Macrophages: obligate partners for tumor cell migration, invasion, and metastasis. Cell. 2006; 124:263–6. [PubMed: 16439202]
50. Mitchem JB, Brennan DJ, Knolhoff BL, et al. Targeting tumor-infiltrating macrophages decreases tumor-initiating cells, relieves immunosuppression, and improves chemotherapeutic responses. Cancer Res. 2013; 73:1128–41. [PubMed: 23221383]
51. Marme F. Immunotherapy in Breast Cancer. Oncol Res Treat. 2016; 39:335–45. [PubMed: 27260697]
52. Schlosser HA, Theurich S, Shimabukuro-Vornhagen A, et al. Overcoming tumor-mediated immunosuppression. Immunotherapy. 2014; 6:973–88. [PubMed: 25341119]
53. Singer K, Kastenberger M, Gottfried E, et al. Warburg phenotype in renal cell carcinoma: high expression of glucose-transporter 1 (GLUT-1) correlates with low CD8(+) T-cell infiltration in the tumor. Int J Cancer. 2011; 128:2085–95. [PubMed: 20607826]
54. Renner K, Singer K, Koehl GE, et al. Metabolic Hallmarks of Tumor and Immune Cells in the Tumor Microenvironment. Front Immunol. 2017; 8:248. [PubMed: 28337200]
55. Gillies RJ, Gatenby RA. Metabolism and its sequelae in cancer evolution and therapy. Cancer journal. 2015; 21:88–96.
56. Baek G, Tse YF, Hu Z, et al. MCT4 Defines a Glycolytic Subtype of Pancreatic Cancer with Poor Prognosis and Unique Metabolic Dependencies. Cell reports. 2014; 9:2233–49. [PubMed: 25497091]
57. Le Floch R, Chiche J, Marchiq I, et al. CD147 subunit of lactate/H<sup>+</sup> symporters MCT1 and hypoxia-inducible MCT4 is critical for energetics and growth of glycolytic tumors. Proc Natl Acad Sci U S A. 2011; 108:16663–8. [PubMed: 21930917]
58. Colegio OR, Chu NQ, Szabo AL, et al. Functional polarization of tumour-associated macrophages by tumour-derived lactic acid. Nature. 2014; 513:559–63. [PubMed: 25043024]

A.

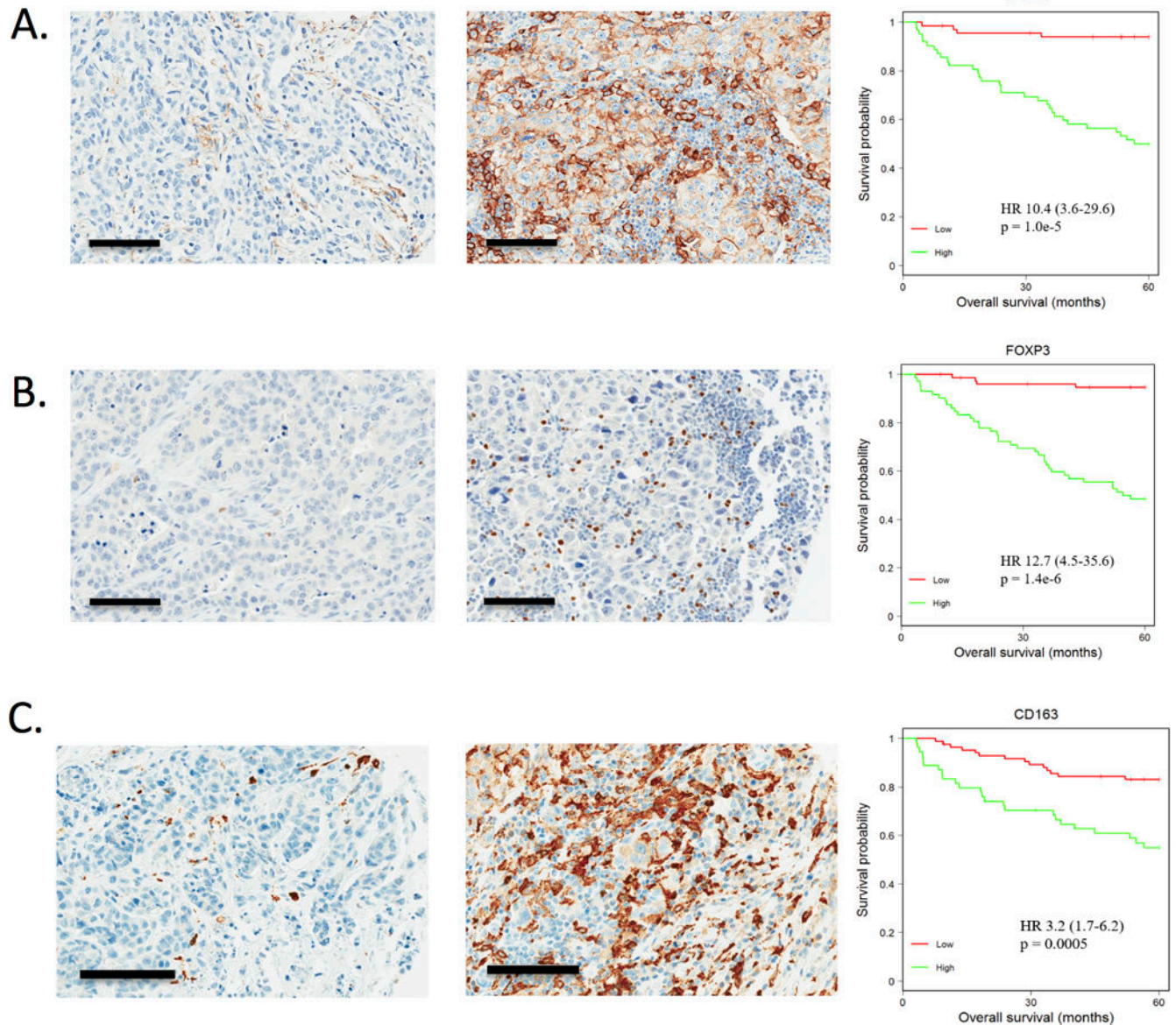


B.



**Figure 1. Tumor infiltrating cells and prognosis**

**A.** Stromal tumor infiltrating lymphocytes were evaluated on full face H&E sections from the blocks used for tissue microarrays construction by a single surgical pathologist using established criteria. Left: Representative example of Low < 10% tumor infiltrating lymphocytes, score 0. Middle: Representative example of intermediate tumor infiltrating lymphocytes 10-50%, score 1. Right: Representative example of high tumor infiltrating lymphocytes >50%, score 2. **B.** Left: Kaplan-Meier analysis shows improved survival in the stromal tumor infiltrating lymphocytes score 2 group (high) versus stromal tumor infiltrating lymphocytes score 0 group (low). Score 0 (n = 55), Score 1 (n = 75), Score 2 (n = 18). Score 0 vs. 2: HR 9.6, p=0.03. Score 1 vs. 2: HR 0.15, p=0.07, Score 1 vs. 0: HR 1.5, p=0.17. Right: Kaplan-Meier analysis shows improved survival in the stromal tumor infiltrating lymphocytes high group versus the stromal tumor infiltrating lymphocytes low group. Low = Score 0 (n = 55). High = Score 1,2 (n = 93). HR 1.8, p=0.037. Scale bar size is 100  $\mu$ m.



**Figure 2. Immunosuppressive markers are associated with prognosis**

**A.** Left: PD-L1 staining by immunohistochemistry was scored in the tumor cells as low 10% in 66 cases. Middle: PD-L1 staining by immunohistochemistry was scored high > 10% in 62 cases. Right: In univariate analysis, elevated levels of PD-L1 staining were associated with significantly decreased overall survival (HR 10.4,  $p=1.0e-5$ ) by Kaplan-Meier analysis. **B.** Left: FOXP3 staining was noted, highlighting lymphocytes in the tumor cellular environment, categorized as low, 8, in 76 cases. Middle: High, > 8, in 72 cases Right: In univariate analysis, elevated levels of FOXP3 staining were associated with significantly decreased overall survival (HR 12.7,  $p=1.4e-6$ ) by Kaplan-Meier analysis. **C.** Left: CD163 staining was noted, highlighting macrophages in the tumor cellular environment, categorized as low 20% in 84 cases. Middle: High, > 20%, in 54 cases. Right: In univariate analysis,

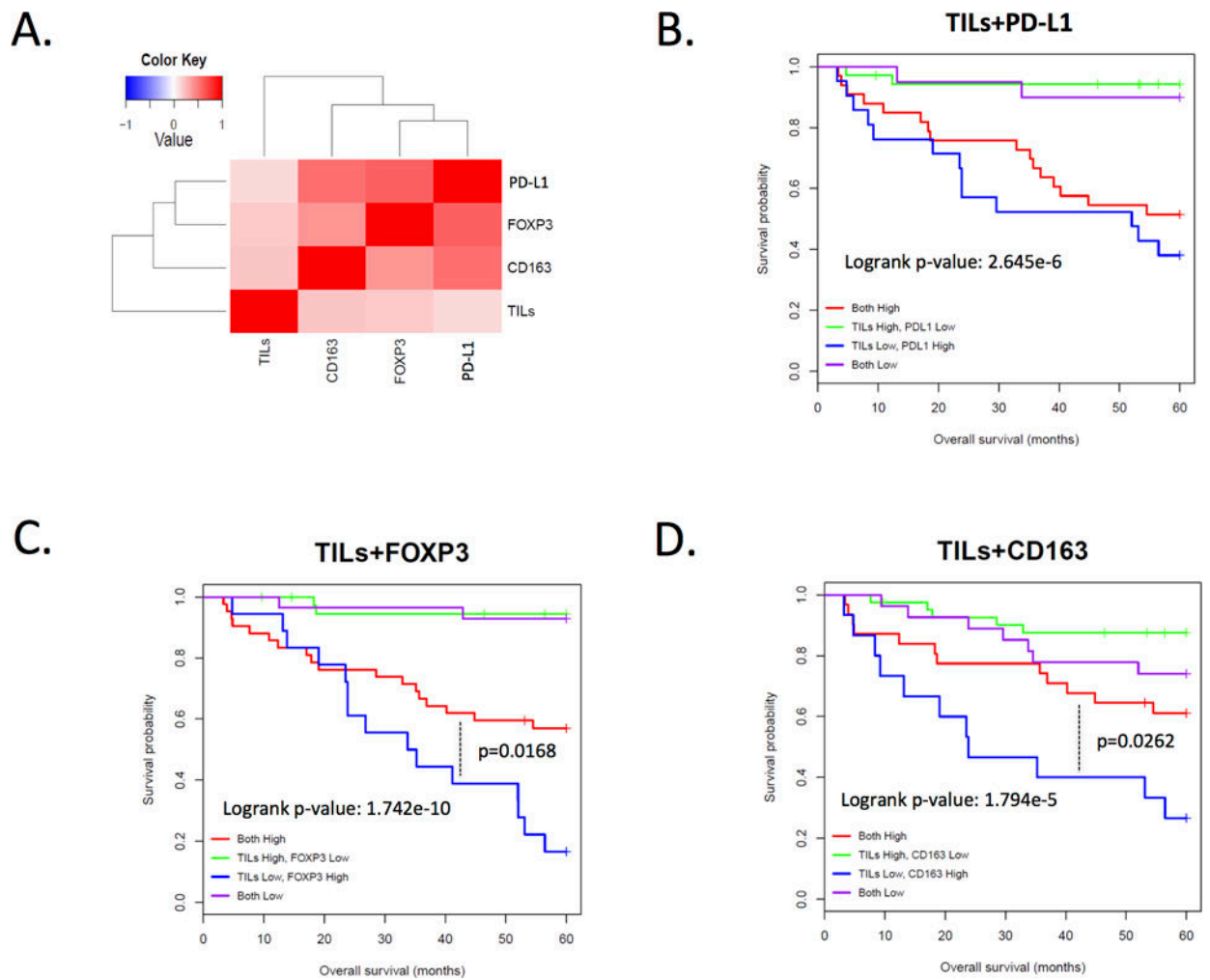
elevated levels of CD163 staining were associated with significantly decreased overall survival (HR 3.2, p=0.0005) by Kaplan-Meier analysis. Scale bar size is 100  $\mu$ m.

Author Manuscript

Author Manuscript

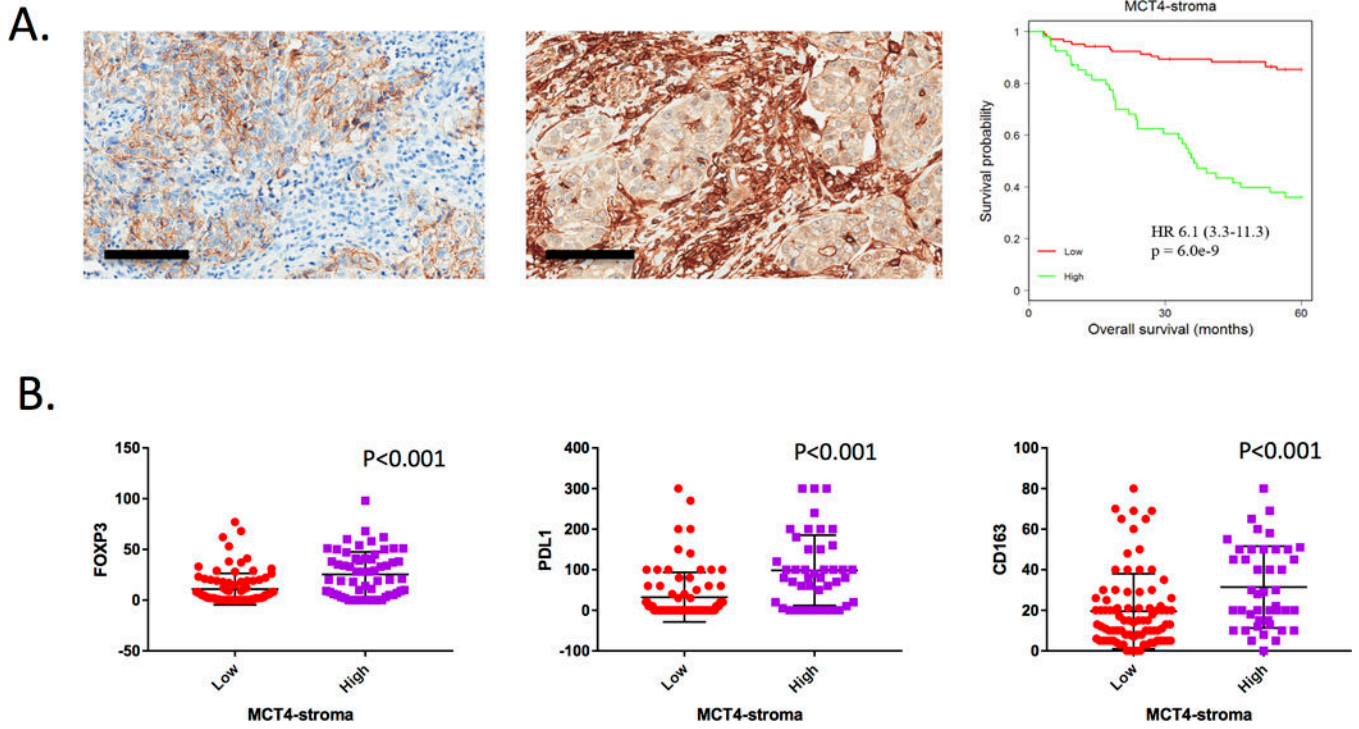
Author Manuscript

Author Manuscript



**Figure 3. Correlation between multiple immune-suppressive mechanisms in triple negative breast cancer**

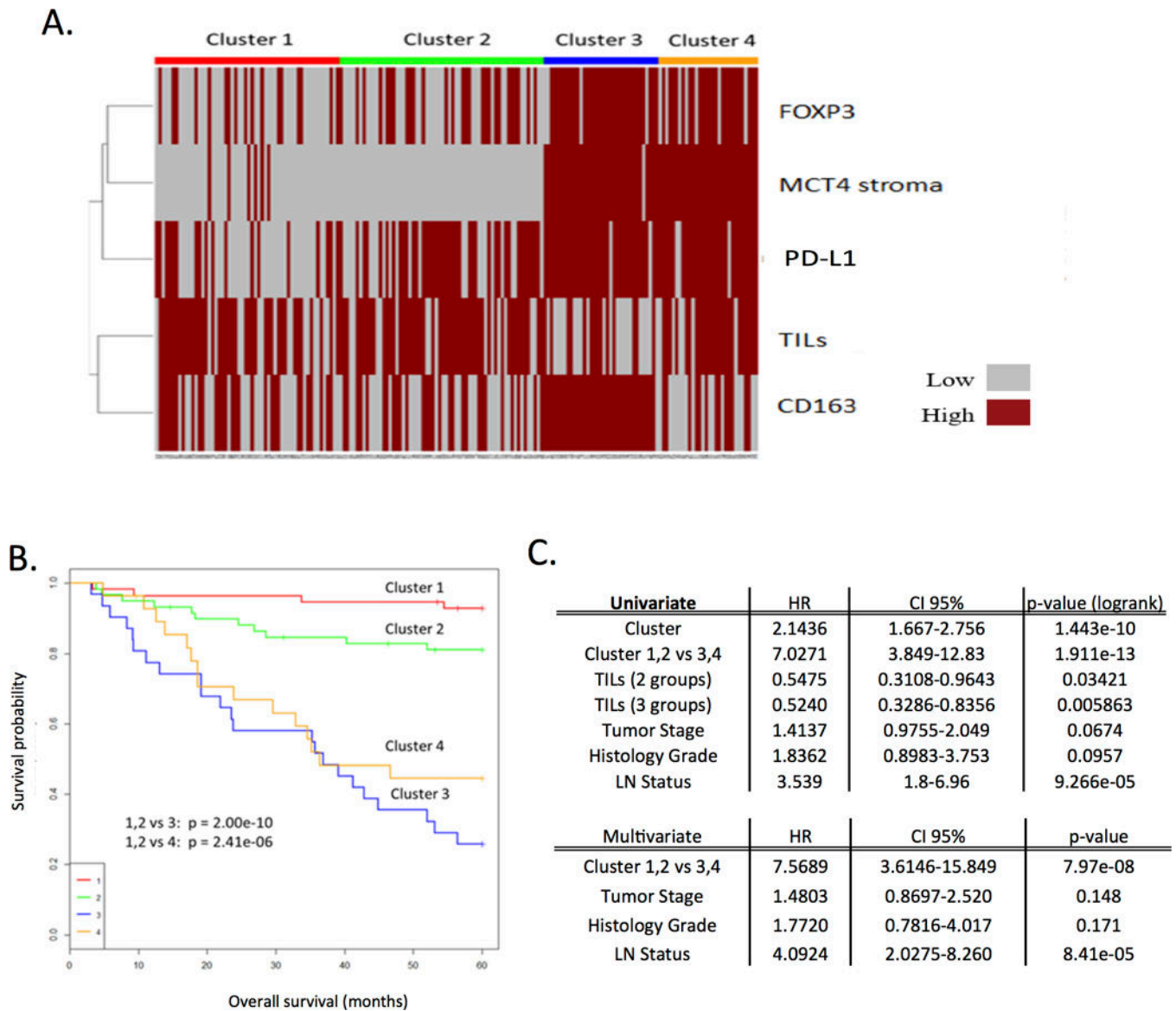
**A.** Heatmap showing the Pearson correlation between the indicated markers. The association between CD163, FOXP3, and PD-L1 are all significant ( $p < 0.001$ ). **B.** Composite Kaplan-Meier analysis of the levels of tumor infiltrating lymphocytes and PD-L1. **C.** Composite Kaplan-Meier analysis of the levels of tumor infiltrating lymphocytes and FOXP3. **D.** Composite Kaplan-Meier analysis of the levels of tumor infiltrating lymphocytes and CD163.



**Figure 4. Metabolic features of the tumor environment are associated with prognosis and immune-suppressive markers**

**A.** Left and Middle: Stromal MCT4 staining was evaluated by immunohistochemistry, and categorized as low (score 0, 1) vs. high (score 2). Right: In univariate analysis, elevated levels of stromal MCT4 staining were associated with significantly decreased overall survival (HR 6.1,  $p=6.0e-9$ ) by Kaplan-Meier analysis. **B.** The level of MCT4 in the stroma was used to dichotomize cases and the levels of CD163, FOXP3, and PD-L1 positive cells is shown. Statistical analysis is by t-test. Scale bar size is 100  $\mu$ m.





**Figure 5. Composite Analysis of Immune and Metabolic Markers**

**A.** K-means clustering analysis plot that defines four distinct triple negative breast cancer subtypes. **B.** Kaplan-Meier plot indicating survival probability based on the indicated clusters. Note decreased survival in cluster 3 and 4. Cluster 3 vs 1, 2: HR 8.38,  $p = 2.00e-10$ . Cluster 4 vs 1, 2: HR 5.64,  $p = 2.41e-6$ . Cluster 1:  $n=56$ . Cluster 2:  $n=59$ . Cluster 3:  $n=31$ . Cluster 4:  $n=28$ . **C.** Univariate and multivariate analysis of the K-means clusters, tumor stage, grade, and lymph node status. The clusters identified based on composite analysis of immune and metabolic markers maintain statistical significance ( $p < 0.05$ ) in the multivariate model.

**Table 1**  
**Clinicopathological features of the TNBC Cohort**

Numbers in brackets are frequencies. N denotes number of non-missing observations.

Variable	N	Values
<b>Age</b>	180	55.5 ± 13.7
<b>Race</b>	179	
White		76% (136)
African American		24% (43)
<b>Tumor size (cm)</b>	<b>164</b>	<b>2.34 ± 1.80</b>
<b>Histologic grade</b>	<b>169</b>	
1-2		75% (126)
3		25% (43)
<b>Stage</b>	<b>170</b>	
1		36% (62)
2		46% (78)
3		12% (21)
4		5% (9)
<b>Lymph node status</b>	<b>144</b>	
Negative		59% (85)
Positive		41% (59)
<b>Survival (months)</b>	<b>174</b>	<b>86.3 ± 52.1</b>