



Heated communities: large inter- and intraspecific variation in heat tolerance across trophic levels of a soil arthropod community

Oscar Franken¹ · Milou Huizinga¹ · Jacintha Ellers¹ · Matty P. Berg^{1,2}

Received: 2 August 2017 / Accepted: 29 November 2017 / Published online: 9 December 2017
© The Author(s) 2017. This article is an open access publication

Abstract

Temperature extremes are predicted to increase in frequency, intensity and duration under global warming and are believed to significantly affect community composition and functioning. However, the effect of extreme climatic events on communities remains difficult to predict, especially because species can show dissimilar responses to abiotic changes, which may affect the outcome of species interactions. To anticipate community responses we need knowledge on within and among species variation in stress tolerance. We exposed a soil arthropod community to experimental heat waves in the field and measured heat tolerance of species of different trophic levels from heated and control plots. We measured the critical thermal maximum (CT_{max}) of individuals to estimate inter- and intraspecific variation in heat tolerance in this community, and how this was affected by experimental heat waves. We found interspecific variation in heat tolerance, with the most abundant prey species, the springtail *Isotoma riparia*, being more sensitive to high temperatures than its predators (various spider species). Moreover, intraspecific variation in CT_{max} was substantial, suggesting that individuals within a single species were unequally affected by heat extremes. However, heat tolerance of species did not increase after being exposed to an experimental heat wave. We conclude that interspecific variation in tolerance traits potentially causes trophic mismatches during extreme events, but that intraspecific variation could lessen these effects by enabling partial survival of populations. Therefore, ecophysiological traits can provide a better understanding of abiotic effects on communities, not only within taxonomic or functional groups, but also when comparing different trophic levels.

Keywords Critical thermal maximum (CT_{max}) · Extreme event · Heat wave · Functional trait · Thermal stress

Communicated by Sylvain Pincebourde.

We expanded the use of trait-based approaches to include multiple taxa within a soil arthropod community in the field. This provides new insights on how differences in tolerance can shape communities.

Electronic supplementary material The online version of this article (<https://doi.org/10.1007/s00442-017-4032-z>) contains supplementary material, which is available to authorized users.

✉ Oscar Franken
oscarfranken@gmail.com; o.franken@vu.nl

¹ Section of Animal Ecology, Department of Ecological Science, Vrije Universiteit, Amsterdam, De Boelelaan 1085, 1081 HV Amsterdam, The Netherlands

² Groningen Institute for Evolutionary Life Sciences, Community and Conservation Ecology Group, University of Groningen, PO Box 11103, 9700 CC Groningen, The Netherlands

Introduction

Most terrestrial ecosystems irregularly experience sudden and severe changes in environmental conditions, for example, due to extreme weather events, such as heat waves, drought spells, and floods. Such extreme events have recently received increasing experimental attention (e.g., De Boeck et al. 2011; Krab et al. 2013; Kayler et al. 2015), but their impact on the community relative to more gradual changes in abiotic conditions remains hard to assess. Whereas, extreme events occur infrequently and usually last for a short period of time, they impose more extreme conditions on organisms and the sudden onset of these events leaves little time for adaptation. Moreover, current climate change scenarios predict an increase in frequency, intensity and duration of extreme weather events (Easterling et al. 2000a, b; Beniston et al. 2007; Rahmstorf and Coumou 2011), which may amplify their ecological impact (Gutschick and BassiriRad 2003; Jentsch et al. 2007).

A major challenge in community ecology is to predict the effects of such extreme weather events on community structure and composition (Gilman et al. 2010; Sutherland et al. 2013). The main difficulty in anticipating a community response is that different species within the community can show dissimilar responses to abiotic stress, which may be due to differences in physiological tolerances or behavioural strategies and microhabitat use to avoid stress. In addition, the variation among species in their responses to environmental change may result in altered trophic, competitive or facilitative interactions and interaction strengths (Tylianakis et al. 2008; Walther 2010; Berg et al. 2010). To anticipate community responses we need knowledge on interspecific and intraspecific variation in responses of species to abiotic stress, which can be investigated using functional traits that relate to species tolerance.

Trait-based approaches have been advocated as a more mechanistic approach to foresee how communities are affected by environmental change (McGill et al. 2006; Langlands et al. 2011; Dias et al. 2013). Multiple studies have related variation in tolerance traits and their environmental drivers to spatial distribution of species (Dias et al. 2013; van Dooremalen et al. 2013), (dis)assembly processes (Lindo et al. 2012; Bartlett et al. 2016), and community composition (Bokhorst et al. 2012). However, trait studies have mainly been carried out within single functional groups or trophic levels (e.g., Dias et al. 2013; van Dooremalen et al. 2013), rather than across trophic levels within a single community (but see Sentis et al. 2013; Puentes et al. 2015). Moreover, studies have predominantly used mean trait values of species to characterize interspecific variation in tolerance, ignoring the fact that trait distributions between species may overlap due to intraspecific variation of trait values (Albert et al. 2011; Violle et al. 2012). Intraspecific variation in stress tolerance determines the relative proportion of a population that will be affected by the extreme conditions and the proportion that can still interact with other species. Thus, including within-species variation in trait-based studies predicting community responses is imperative, as previously shown for Collembola (Janion et al. 2009).

Intraspecific variation of trait values can be caused by several underlying mechanisms, and these may differentially affect persistence under extreme conditions. For instance, many species show ontogenetic variation in traits related to abiotic stress, which affects survival probabilities of different life stages (Bowler and Terblanche 2008; Hoffmann 2010; Kingsolver et al. 2011; Nakazawa 2014; Zizzari and Ellers 2014). Especially when extreme conditions affect only a particular age or size class, such as small-sized juveniles or reproductively active adults, severe consequences for the population can be expected. This may alter size distributions and population dynamics with cascading effect on higher trophic levels (e.g.,

through reduced prey density) or lower trophic levels (e.g., through reduced predation pressure). Another important source of intraspecific variation in trait values is phenotypic plasticity (DeWitt and Scheiner 2004), by which previous exposure to stressful conditions may lead to a rapid increase in tolerance to subsequent exposures, which may even act across generations (e.g., Bateson et al. 2014; Zizzari et al. 2016). Moreover, if species differ in the degree to which they adjust their physiology to extreme conditions, this may differentially affect species' survival when exposed to extreme events, thereby affecting the interaction strength between the species. Understanding the causes and consequences of intraspecific variation can provide valuable insight in the effects of extreme events at the population level, and subsequently on the interactions with other species in the community.

In this paper we investigate the extent of inter- and intraspecific variation in heat tolerance of several species from a soil arthropod community that was exposed to experimental heat waves. These heat waves were induced by placing small plastic greenhouses with heat emitters in the field. We focus on a thermal trait that is related to temperature extremes: the critical thermal maximum (CT_{max}), which reflects the heat tolerance of an individual when exposed to a gradually increasing temperature (Lutterschmidt and Hutchison 1997; Terblanche et al. 2007; Mitchell and Hoffmann 2010). As CT_{max} is measured at the individual level, this tolerance proxy allowed us to measure intraspecific variation in heat tolerance and link this to body size effects. Using species from a single arthropod community, we maximize the likelihood that they have previously experienced the same climatic conditions, although the actual habitat mean temperature and variance that individuals have experienced is likely to be modified by behavioural differences and microhabitat use.

We expected to find interspecific differences in heat tolerance due to differences in physiology among species, especially because thermal traits are often considered to be phylogenetically conserved (e.g., Kellermann et al. 2012; Araújo et al. 2013). We further expected large intraspecific variation within the measured species, mostly due to differences in body size and associated ontogenetic variation. Specifically, we hypothesize that larger, adult individuals are more sensitive to exposure to high temperatures than smaller, juvenile individuals (Bowler and Terblanche 2008; Zizzari and Ellers 2014). Finally, we expected an increase in heat tolerance of species after being exposed to an artificial heat wave in the field, either because of phenotypic plasticity in heat tolerance or because of disproportional survival of more tolerant individuals. We will discuss the ecological consequences of the inter- and intraspecific variation in heat tolerances in terms of species interactions within our soil community.

Materials and methods

Field site

Our experiment was conducted on the southwest side of the barrier island of Schiermonnikoog (53.46896°N, 6.13914°E), The Netherlands. The ecosystem consisted of a vegetated beach which was characterized by a rather low diversity of plant species and a relatively low species richness of the arthropod community compared to other terrestrial ecosystems (van Wingerden and den Hollander 1981; Ellers et al. 2011). This allowed us to collect individuals from all the dominant taxa living on the soil surface and include them in our study. The study site was located ~ 400 m north of the mean high tide line, in an area which annually received about five to ten sea water inundation events. During our experiment, there were no inundation events. The vegetation was dominated by *Glaux maritima* L. with tufts of *Carex extensa* Gooden, *C. distans* L. and *Limonium vulgare* Mill. Approximately the first cm of the soil consisted of sand mixed with fine organic matter with almost no build-up of a leaf litter layer. In patches where vegetation cover was sparse, a microbial mat covered the soil surface (Bolhuis et al. 2013). In 2014, the average annual temperature was 11.5 °C, with a measured summer maximum of 34.4 °C. There were 8 days in 2014 on which the temperature exceeded 25.0 °C, and an additional 67 days with temperatures exceeding 20.0 °C. Annual precipitation was 621.8 mm, making 2014 a warmer and dryer year compared to long term averages (all climate data from weather station ‘Lauwersoog’, The Netherlands. Source: http://cdn.knmi.nl/knmi/map/page/klimatologie/gegevens/mow/jow_2014.pdf).

Artificial heat waves in the field

We established four spatially separated plots which were aligned parallel to the dune ridge and the sea. Plots were chosen to have similar elevation above mean sea level and, therefore, comparable inundation regimes and vegetation types (Fig. S1). The distance between plots ranged from ~ 15 to ~ 80 m to reduce spatial variability over larger scales. Within these four plots, four subplots of 70 × 70 cm each were created, resulting in a total of 16 subplots. Our experimental capacity was limited to four heating units; therefore, the experiments were carried out in two periods (period 1 from the 3rd to the 10th of June 2014 and period 2 from the 20th of July to the 7th of August 2014). For each plot the four subplots were randomly assigned to a combination of period and treatment (control period 1, treatment period 1, control period 2, treatment period 2).

To heat the soil in the treated subplots, we covered them with miniature greenhouses (hereafter tents) made out of transparent polythene sheets (Botanico PNI1101) (Fig. S1). Sheets were placed over two crossed plastic pipes (ø 1 cm) of ~ 157 cm length that formed two halve-circle arcs with a maximum height of 50 cm above the soil. Two ceramic heat emitters (60 Watts each, RepTech) were attached on the pipes, each 12.5 cm from the center where the pipes crossed. Heat emitters were placed 20 cm above the soil surface and were powered to their full capacity by a generator (Honda EU10i). Tents were set-up for 4 h between ~ 11:00 and 15:00 to specifically mimic an increase in maximum temperature during the hottest period of each day. Using this method, the treatment subplots were warmed relative to the control subplots, even though absolute temperatures reached were dependent on the ambient conditions. During heating, the base of the tents were pressed to the ground by placing a heavy iron chain on top of a 3–5 cm wide band of sheet around the subplots, to limit movement of animals out of the plots. The tents remained on the subplots for an additional hour with the heat emitters turned off to allow the air to cool down gradually. Control subplots were not covered by tents and exposed to ambient field conditions. Compared to the control subplots, the heating resulted in an average increase of the maximum temperature of 7.4 °C for period 1 and 4.0 °C for period 2 (Table 2 and Fig. S5).

Since the tents were removed daily, temperatures dropped to ambient night temperatures, whereas during natural heat waves it is not uncommon that also night temperatures are relatively high. However, nighttime exposure was not included in this experiment as it could have introduced unwanted artefacts such as a high relative humidity. By removing the tents, animals possibly moved in or out of the subplots during the night, potentially diluting the effect of heating. However, soil organisms generally have a small home range, as was the case for our species. More specifically, the genus of the most abundant prey species in our study, *Isotoma* (Collembola) moves only ~ 5 cm week⁻¹ (Ojala and Huhta 2001), and the most abundant predator species, i.e., web building dwarf spiders (Linyphiidae), can be considered largely sedentary. Lycosid spiders were the most mobile species, but mark-recapture studies shows only ~ 20% probability to move to an adjacent plot (1 m) in 4 days (Ahrens and Kraus 2006).

Temperature was recorded to the nearest 0.01 °C every minute using temperature loggers (Tinytag Plus2) of which the sensors were placed horizontally on the soil surface in both control and heated subplots. Temperature profiles were retrieved with the program EasyView (Version 5.7.0.1. © INTAB Interface-Teknik AB 2002) and data were exported to Microsoft Excel (Microsoft Office 365 version 1611) for further analysis. Every day, the average and maximum temperature was calculated for both the control and heated

subplots of a selected plot pair. Per subplot, the average of the temperature data of the exposure days was used for statistical analysis. A paired *t* test was performed in Microsoft Excel to test for effectiveness of the heat treatment.

In the first experimental period we applied a single heat wave of 5 consecutive days, which resembles a meteorological heat wave according to The Royal Netherlands Meteorological Institute (<https://www.knmi.nl/kennis-en-datacentrum/uitleg/hittegolf>, in Dutch). We used a staggered exposure period, starting with the exposure of one pair of subplots (control and treatment), and adding one random pair to the exposure every day. This design allowed us to harvest a single pair of subplots per day (which was necessary due to logistic constraints, see below), while each pair still had 5 days of exposure. Preliminary analysis showed no effect of this single heat wave on the thermal sensitivity of the soil organisms. Therefore, in the second experimental period we applied two consecutive artificial heat waves of 5 days each to further increase thermal stress. We are aware that this experimental design does not allow us to disentangle effects of the experimental period and number of heat waves, therefore the combined effect of experimental period and number of heat waves was included as a random effect in the statistical analyses to account for any introduced variation by these combined effects (see Supplemental information 2). In total, this design resulted in eight heated and eight control subplots for the full experimental period.

Critical thermal maximum (CT_{max})

To obtain samples for the measurement of CT_{max} , animals were collected from the control and heated subplots directly after the removal of the tents. Vegetation and top soil in the subplots was carefully, manually searched for 1 h. The arthropods (i.e., springtails, spiders and insects) were collected alive using a pooter and stored in plastic containers (\varnothing 13.1 cm, height 5.8 cm) with a \sim 0.5 cm thick bottom of water-saturated plaster of Paris and some vegetation material. Predators were collected in separate containers from the prey to prevent predation. The containers were transported to the laboratory within an hour.

For the measurement of CT_{max} animals were placed individually in a glass jar (\varnothing 2.7 \times 7.5 cm) with a \sim 2.1 cm layer of water-saturated pink plaster of Paris (Regal Die Violet class 4, Gips Zwolman) to prevent dehydration. Twenty-five jars were placed in a Styrofoam plate (37.5 \times 29.9 \times 2.0 cm) in a 5 \times 5 grid with \sim 2.3 cm intervals. This plate was placed in a 19 L water bath (Julabo Bath tank 19) with a heating immersion circulator (Julabo MB) (Fig. S3). The water level in the bath was set to come up to the first 0.5 cm of the Styrofoam plate. The bottom of the vials protruded \sim 2.1 cm from the underside of the Styrofoam plate to facilitate heat conduction from the water to the layer of plaster in the jar.

Animals from different treatments or size classes were always mixed within a single run, to prevent bias between runs, and were randomly assigned to the 24 jars. Three runs per pair of control and heated subplots were needed to test the collected animals for CT_{max} , resulting in measurements of a maximum of 72 individual animals per day. The water was heated following a ramping assay from an initial temperature of 20 °C, with a steady increase of 0.35 °C min⁻¹ (Julabo EasyTemp software version 3.4.1). The initial temperature of 20 °C was close to the soil temperatures at time of sampling, and chosen to standardize measurements over the different days. During each run a logger (iButton, Maxim Integrated DS1923) was placed in the center jar of the plate to monitor changes in moisture and temperature. The programmed increase of 0.35 °C min⁻¹ of the water resulted in a 0.33 °C min⁻¹ steady increase within the test vials. This rate was relatively fast compared to other studies, which are typically in the range of 0.06–0.25 °C min⁻¹ (Terblanche et al. 2007; Moretti et al. 2017), but this rate was chosen to complete three water bath runs per day, which was essential to process all animals per subplot pair within a day. CT_{max} values are known to depend on methodological context (e.g., Terblanche et al. 2007; Chown et al. 2009; Mitchell and Hoffmann 2010), with higher ramping rates giving rise to higher estimates of CT_{max} (because of shorter total exposure time until death). Although the absolute value of CT_{max} measured for each individual in our study may partly result from the chosen ramping rate, differences between individuals or species were meaningful because the same methodology was applied throughout the experiment. A correction was applied to correct the recorded water temperature to the air temperature in the vials (Fig. S4).

Animals in the vials were observed continuously during the gradual increase of the air temperature. CT_{max} was recorded as the temperature at which there was no movement of appendages of the animal observable after gently touching them with a fine brush. We chose this protocol to standardize the method for use of a diversity of taxa within one measurement (for a discussion on possible endpoints in CT_{max} measurements see Lutterschmidt and Hutchison 1997).

After the CT_{max} measurements, the animals were fixed in 70% ethanol and stored for species identification and body size measurements. For body size measurements we used a mounted camera (Olympus SC30) on a Leica Wild M8 stereomicroscope (with 6 \times magnification) to make digital images of each individual. During measurement, the animals remained submerged in 70% ethanol. Body size was measured from these images using cellSens Entry 1.7 software (Olympus). Collembola were measured dorsolaterally, following and including the curvature that normally occurs when storing some Collembola in ethanol. Hemiptera, Coleoptera and Araneae do not show this altered body shape and were measured dorsally, to the nearest μ m. For

spiders it is also common to use the length or width of the cephalothorax, but we refrained from using these measurements to be able to directly compare the body sizes of all taxonomic groups.

Analysis and statistics

Statistical analyses were performed using R version 3.3.1 (R Core Team 2016), which was run in the RStudio interface (RStudio Team 2015). Species with fewer than three individuals were not included in any of the analyses. We ran linear mixed effects models on the CT_{max} data using the package “lme4” (Bates et al. 2015) with the random factors: plot (spatial difference between the plots, linking the subplot pairs), experiment (experimental heating period 1 vs period 2) and run (temporal variation between water bath runs within a pair of subplots). To test whether the fit of the statistical models was improved when including interactions between the main factors, or to test if a main factor improved the model fit, we obtained Wald Chi-square statistics from the “Anova” function in the statistical package “Car” (Fox and Weisberg 2011).

First, we tested whether life stage and sex had significant effects on the observed CT_{max} values. The effect of life stage could only be assessed in the bug family Saldidae. Being hemimetabolous, both nymphs and adults live on the soil surface, and hence have comparable thermal environments throughout their life history. This does not hold for the holometabolous beetle family Heteroceridae, where a large part of the larval development takes place belowground. Also the spiders were not suitable for testing for life stage-related changes in CT_{max} , since juvenile spiders could not be identified to the species level. Effect of sex on the observed CT_{max} was tested for the spiders *Erigone longipalpis* and *Oedothorax retusus*. The absence of a significant effect of the

factors of life stage and sex would justify their omissions from further analysis.

We then tested whether the heating treatment and taxonomic group had a significant influence on the measured CT_{max} values, and whether this effect differed between taxa (Treatment \times Taxon). Only the taxonomic groups for which we had data on more than ten individuals in the treatment and control subplots were included. Contrasts analysis was performed on significant fixed factors using the function “lsmeans” in the similarly named package (Lenth 2016), with a Tukey correction for multiple comparisons. To test for interspecific effects of body size on the observed CT_{max} values, we fitted a weighted least squares linear model to the average CT_{max} and average body size of all taxonomic groups, with the weight being the number of measured individuals per group. Besides this interspecific relationship between CT_{max} and body size, it is expected that variation within taxa might contribute to the intraspecific variation in CT_{max} . We used the data of the taxonomic groups with more than ten measured individuals to fit a linear mixed effects model with taxonomic group, individual body size and their interaction (Taxon \times Body size), to test their effect on CT_{max} . When interactions between taxonomic group and body size were significant, we investigated this intraspecific pattern for each taxon. Assumptions of the applied tests were visually checked by plotting the residuals of the fitted models.

Results

Soil fauna community

In total, we measured the CT_{max} and body size of 552 individuals of the arthropod community living on the soil surface (Table 1). The most abundant taxonomic group was the

Table 1 An overview of the soil animals for which CT_{max} and body size were measured and included in the analysis

Species	Author	Taxon	Family	N	
				Control	Treatment
<i>Isotoma riparia</i>	(Nicolet 1842)	Collembola	Isotomidae	127	128
<i>Walckenaeria kochi</i>	(O.P.-Cambridge 1872)	Araneae	Linyphiidae	3	0
<i>Oedothorax retusus</i>	(Westring 1851)	Araneae	Linyphiidae	20	37
<i>Erigone longipalpis</i>	(Sundevall 1830)	Araneae	Linyphiidae	15	21
Linyphiidae (juvenile)		Araneae	Linyphiidae	41	38
<i>Pachygnatha degeeri</i>	Sundevall 1830	Araneae	Tetragnathidae	3	1
<i>Argenna patula</i>	(Simon 1874)	Araneae	Dictynidae	2	4
Lycosidae (juvenile) ^a		Araneae	Lycosidae	16	15
Saldidae		Hemiptera	Saldidae	14	17
<i>Heterocerus</i> sp.		Coleoptera	Heteroceridae	10	10
				251	271

N gives the number of individuals included in the analysis

^aCombination of *Pardosa purbeckensis* F. O. Pickard-Cambridge, 1895 and *Pirata piraticus* (Clerck 1757)

Collembola, present with a single species *Isotoma riparia* ($N = 255$). Two Linyphiid spider species were present in high numbers, i.e., *Erigone longipalpis* ($N = 36$) and *Oedothorax retusus* ($N = 57$). Juvenile Linyphiidae could not be determined to species level and were pooled together ($N = 79$). The Lycosidae were also abundant, but we caught mostly juveniles ($N = 31$) and only two adults. As the adults belonged to two different species of wolf spiders, they were excluded from further analysis. We also found several spider species with lower numbers of adults, i.e., *Walckenaeria kochi* ($N = 3$), *Argenna patula* ($N = 6$) and *Pachygnatha degeeri* ($N = 4$). Finally, two insect taxa were found: *Heterocerus* sp. (Coleoptera, $N = 20$) and Saldidae (Hemiptera, $N = 31$).

Statistical analysis showed that the heating treatment had a significant effect on both the average and maximum temperatures in both treatment periods (Table 2, Fig. S5).

No effects of life stage and sex on CT_{max}

The effect of life stage on CT_{max} was tested in the Saldidae. Our analysis of CT_{max} shows that including life stage did not significantly improve the fit of the model ($\chi^2_{(1)} = 0.035$, $P = 0.85$, Fig. S6a).

Sexual dimorphism is a second factor that could potentially increase intraspecific variation in CT_{max} for some of the taxonomic groups. Of the two Linyphiidae species tested, *O. retusus* ($N = 57$) showed clear body size dimorphism, with larger females than males, whereas *E. longipalpis* ($N = 36$) did not show size dimorphism. However, the statistical models showed no significant effects of sex on CT_{max} for either of these species (*O. retusus*: ($\chi^2_{(1)} = 0.43$,

$P = 0.51$); *E. longipalpis*: ($\chi^2_{(1)} = 2.7314$, $P = 0.098$), see also Fig S6b, c. Based on the lack of significance of life stage and sex in the tested species, these variables were not included in the remainder of the analyses.

The effect of artificial heat waves on CT_{max}

Seven taxonomic groups had a sufficiently large sample size (i.e., $N > 10$ in both treatment and control) to test our hypothesis that exposure to higher temperatures in the field will result in higher CT_{max} values. We found that there was no interaction between the two main effects Taxon and Treatment ($\chi^2_{(6)} = 4.0$, $P = 0.68$). Moreover, only Taxon had a strong effect on the observed CT_{max} values ($\chi^2_{(6)} = 962.8$, $P < 0.001$), and the heating treatments did not have an effect on the CT_{max} values ($\chi^2_{(1)} = 0.60$, $P = 0.44$).

As the heating treatments did not influence CT_{max} values, we ran the model again without treatment, this time including all available taxa. Taxonomic group remained highly significant in this analysis ($\chi^2_{(9)} = 1051.6$, $P < 0.001$), and contrast analysis revealed large differences in CT_{max} between the taxonomic groups (Fig. 1). Especially the main prey species of our arthropod community, *I. riparia* ($CT_{max} = 43.4 \pm 1.8$ °C) had a significantly lower heat tolerance than its most abundant predators, *O. retusus* ($CT_{max} = 45.6 \pm 1.8$ °C; t ratio = 7.5; $P < 0.001$), *E. longipalpis* ($CT_{max} = 47.1 \pm 2.2$ °C; t ratio = 12.7; $P < 0.001$), juvenile Linyphiidae ($CT_{max} = 46.1 \pm 1.9$; t ratio = 10.5; $P < 0.001$) and the juvenile Lycosidae

Table 2 Abiotic conditions in control versus heated subplots

Experiment	Average temp. (°C ± SD)	Max. temp. (°C ± SD)
Period 1: one heat wave		
Control	26.1 ± 1.6	31.1 ± 1.5
Treatment	32.7 ± 1.4**	38.5 ± 1.1**
Difference	6.6 ± 1.3	7.4 ± 1.9
Period 2: Two consecutive heat waves		
Heat wave 1		
Control	29.6 ± 0.7	32.2 ± 0.7
Treatment	33.1 ± 0.5***	36.4 ± 0.4***
Difference	3.5 ± 0.3	4.2 ± 0.4
Heat wave 2		
Control	30.1 ± 0.7	34.6 ± 0.7
Treatment	33.6 ± 0.9***	38.3 ± 0.8***
Difference	3.5 ± 0.2	3.7 ± 0.3

Temperature was recorded at the soil surface. Values were averaged over the 5 days of exposure per plot, which masks part of the variation of the actual daily differences in the field

* $P < 0.05$, ** $P < 0.01$, *** $P < 0.001$, paired t test (See Fig. S5 for details per plot pair)

Fig. 1 Differences in CT_{max} for the taxonomic groups included in our analysis. Boxplots indicate the median with quartiles, with whiskers indicating 1.5 times the interquartile range. In this analysis, data of the control and treatment subplots was combined, as there was no significant effect of the heating treatment on CT_{max} of the different taxa. For clarity, the different taxonomic groups are colour coded. Collembola and Heteroceridae are considered decomposers, while all spider species (Araneae) are predators. Saldidae are thought to either actively predate or feed on dead animals. For full species names see Table 1. Different letters indicate statistical difference at $P < 0.05$

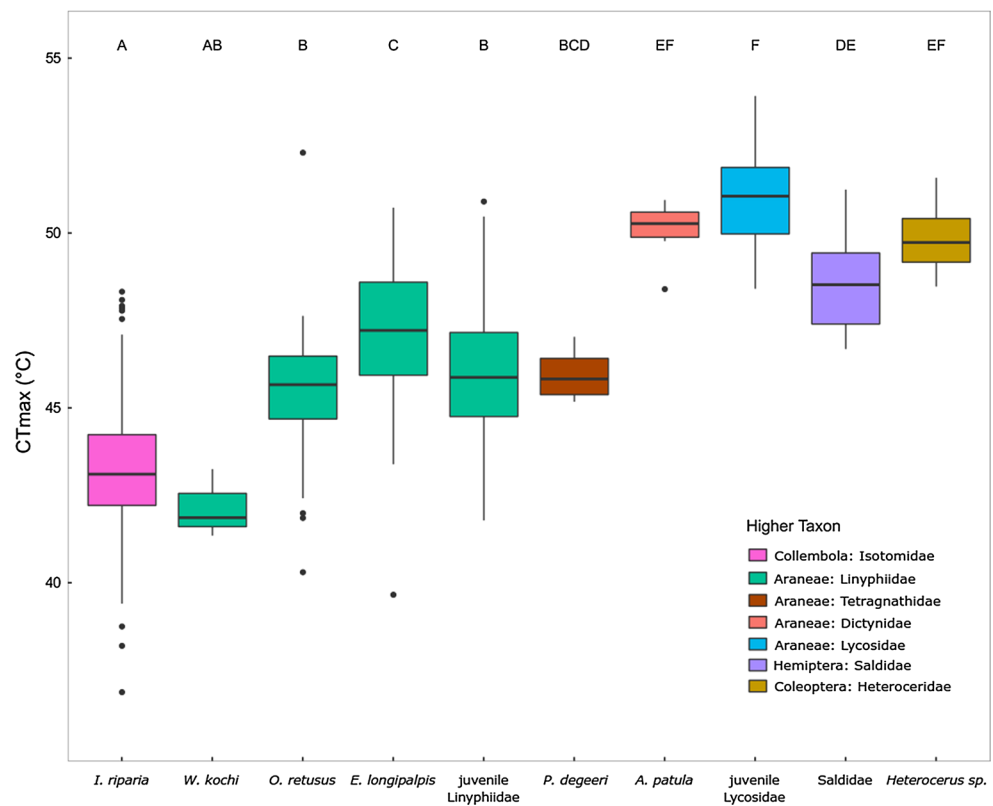


Table 3 Intraspecific variation in CT_{max} of the seven taxa with > 10 individuals in both control and treatment subplots

Species	Mean CT_{max}	St. deviation	Range min–max CT_{max}	Total variation in CT_{max}
<i>I. riparia</i>	43.4	1.8	37.0–48.5	11.5
<i>O. retusus</i>	45.6	1.8	40.4–52.4	12.0
<i>E. longipalpis</i>	47.1	2.2	39.8–50.9	11.1
Linyphiidae (juv)	46.1	1.9	41.9–51.0	9.1
Lycosidae (juv)	51.1	1.3	48.5–54.0	5.5
Saldidae	48.6	1.3	46.8–51.4	4.6
<i>Heterocerus</i> sp.	50.0	0.9	48.6–51.7	3.1

Full species names are given in Table 1

($CT_{max} = 51.1 \pm 1.3$ °C; t ratio = 22.8; $P < 0.001$; See Fig. 1 and Table 3 for details on the other taxa).

Inter- and intraspecific variation in CT_{max} and the effect of body size

To test if the observed interspecific differences in CT_{max} were related to variation in species’ body size, a linear

model was fitted with average CT_{max} and average body size per taxonomic group, each weighted for the number of observations in that taxon. There was no significant relationship between average body size and average CT_{max} value of the taxa ($t_{(1,8)} = 1.58$; $P = 0.153$) (Fig. S7).

Besides interspecific variation, we also observed that CT_{max} varied considerably within each taxon. For example, CT_{max} of *I. riparia* ranged from 37.0 to 48.5 °C and the total variation in *O. retusus* was even higher: ranging from 40.4 to 52.4 °C (see Table 3 for all taxa). We tested intraspecific variation in body size as an explanatory variable for intraspecific variation of CT_{max} values. In addition to taxonomic group ($\chi^2_{(6)} = 942.4$, $P < 0.001$), intraspecific variation in body size was also highly significant with an overall negative correlation between individual body size and CT_{max} ($\chi^2_{(1)} = 12.6$, $P < 0.001$). However, there was a significant interaction between the factors taxon and body size ($\chi^2_{(9)} = 22.4$, $P = 0.001$), indicating that the effect of body size on CT_{max} differed between taxonomic groups.

This interaction was further investigated by separately analysing the effect of individual body size on CT_{max} for seven taxa with sufficient sample sizes (the same taxa as used to test for artificial heating above, Table 4). We found that *I. riparia* and *Heterocerus* sp. had a significant negative relationship between CT_{max} and body size ($\chi^2_{(1)} = 17.3$,

Table 4 Results of the Wald Chi-square tests body size as the main effect in the fitted linear mixed effect models

CT _{max} (taxon) ~	Fixed and random factors	χ^2	Df	P	Slope
<i>I. riparia</i>	Body size + (1 Experiment) + (1 Run) + (1 Plot)	17.30	1	< 0.001	− 0.82
<i>O. retusus</i>	Body size + (1 Experiment) + (1 Run) + (1 Plot)	0.25	1	0.615	− 0.29
<i>E. longipalpis</i>	Body size + (1 Run) + (1 Plot)	0.43	1	0.513	− 0.92
Linyphiidae (juv)	Body size + (1 Experiment) + (1 Run) + (1 Plot)	4.63	1	0.032	1.09
Lycosidae (juv)	Body size + (1 Experiment) + (1 Run) + (1 Plot)	0.45	1	0.501	0.19
Saldidae	Body size + (1 Experiment) + (1 Run) + (1 Plot)	0.57	1	0.450	0.22
<i>Heterocerus</i> sp.	Body size + (1 Run) + (1 Plot)	9.49	1	0.002	− 0.92

The effect of body size on CT_{max} was tested for these seven taxa separately. Taxa for which CT_{max} was influenced by body size are displayed in bold. Full species names are given in Table 1

$P < 0.001$ and $\chi^2_{(1)} = 9.5$, $P = 0.002$ for *I. riparia* and *Heterocerus* sp., respectively). For every additional mm in body size, the CT_{max} was reduced by 0.82 and 0.92 °C for *I. riparia* and *Heterocerus* sp., respectively. Especially for *I. riparia* these values are substantial as body sizes ranged from ~ 1.2 to ~ 4.5 mm, resulting in a difference in thermal tolerance of almost 3 °C from the smallest to largest individuals. On contrary, the juvenile Linyphiidae showed a positive relationship between CT_{max} and body size ($\chi^2_{(1)} = 4.63$, $P = 0.032$). This results in a 1.09 °C increase in CT_{max} for every additional mm of length.

Discussion

In this study we investigated inter- and intraspecific differences in heat tolerance among species of a soil arthropod community exposed to artificial heat waves. We found strong interspecific differences in heat tolerance, with the dominant Collembola species being more sensitive to high temperatures than its predators, mostly spider species (Fig. 1). Additionally, we observed large intraspecific variation in heat tolerance (Table 3), partly related to body size. Artificial heating of communities in the field, mimicking naturally occurring heat waves, had no detectable effect on heat tolerance of individual species. We discuss the ecological implications of inter- and intraspecific variation in heat tolerance on species interactions.

Interspecific differences in heat tolerance

We observed significant differences in the level of heat tolerance between taxonomic groups. The prey species *I. riparia* had a significantly lower CT_{max} than most of its predator species, and also among predator species heat tolerance differed significantly. For example, within the spiders, the Lycosidae and Dictynidae had significantly higher CT_{max} values than the Linyphiidae and Tetragnathidae. Although interspecific differences in CT_{max} between taxa have been reported

before (e.g., Addo-Bediako et al. 2000; Sunday et al. 2011; Araújo et al. 2013), this—to our knowledge—has never been reported for interacting species in a terrestrial community under field conditions. The information obtained from this approach therefore adds to studies focusing on specific interactions in the community (Sentis et al. 2013; Puentes et al. 2015) or studies comparing heat tolerances across spatial scales (e.g., Deutsch et al. 2008; Araújo et al. 2013).

The mechanisms underlying these interspecific differences in thermal tolerance are largely unknown. Previous research has already pointed to evolutionary constraints at the upper thermal limits of species (Addo-Bediako et al. 2000; Chown 2001; Mitchell et al. 2011; Kellermann et al. 2012; Hoffmann et al. 2013). However, a mechanistic explanation as to which trait is underlying these constraints is not evident and multiple factors can be simultaneously at play, such as membrane lipid composition (van Dooremalen et al. 2013), innate differences in heat shock protein expression (Belén Arias et al. 2011), oxygen limitation at higher temperatures (Klok et al. 2004), and interspecific differences in body size. Specifically the difference in body size is interesting considering that on the soil surface, which is heated by solar radiation, the smaller species in this community may experience higher temperatures compared to larger species because the smaller species' bodies are closer to the heated soil surface (e.g., Kaspari et al. 2015). However, we found no significant relation between the average CT_{max} and body size of the taxa investigated here (Fig. S7). Measurements of both heat tolerance and these underlying traits in combination with phylogenetic analysis could potentially provide additional answers, but to do so more data are needed that are collected in a standardized and comparative way (Moretti et al. 2017).

The finding of substantial interspecific differences in heat tolerance within a single community, raises the question how these differences affect the dynamics of species interactions during and after heat waves. This is especially relevant as it is known that altered species interactions can pose a larger effect on communities than the direct abiotic effects (Ockendon et al. 2014). In line with the thermal mismatch

hypothesis postulated for host–parasite interactions (Nowakowski et al. 2016; Cohen et al. 2017; Greenspan et al. 2017), our results indicate that thermal mismatches might also occur in predator–prey interactions in a community. Species with a high thermal tolerance are expected to be less affected by hot weather extremes than species with low thermal tolerance. Therefore, when such species co-occur, the species within communities will most likely not respond to climate change in similar ways (Petchey et al. 1999; Voigt et al. 2003).

The fact that higher trophic levels in our study seem to be more tolerant to high temperatures also highlights the difference in climate change effects of short term extreme events compared to more gradual and longer lasting time scales, as studies on the latter usually find that higher trophic levels are more sensitive to increases in temperature than lower trophic levels (e.g., Petchey et al. 1999; Voigt et al. 2003; Vasseur and McCann 2005; Gilman et al. 2010). This difference can be explained by our focus on the direct, physiological differences between the taxa, which is especially relevant when communities are exposed to extreme events. As such extremes can occur for one or several days (such as the 5 days used here), the stress is sudden and can directly cause differences in survival between species when their physiological thresholds are surpassed. On the contrary, the studies quoted above focus on longer time scales (even spanning multiple generation), and therefore on consequences for population dynamics. This emphasizes that the specific form of temperature changes that global warming can bring about (e.g., extreme event versus gradual change), can yield different predictions on the outcome at the community level.

Intraspecific variation of thermal tolerance

In addition to interspecific differences in heat tolerance, within-species variation can also affect the outcome of species interactions. When intraspecific variation is large, some proportion of the individuals could survive and continue to interact in the community, depending on the severity of the heat wave. We found considerable levels of intraspecific variation in CT_{max} values of the prey species *I. riparia* (37.0–48.5 °C) and in some of the other taxa (see Fig. 1 and Table 3), with some of the individuals of interacting species showing overlap in tolerance trait values. Part of this intraspecific variation of CT_{max} may have resulted from variation in body size within taxa. We found a negative relationship of body size with CT_{max} in adult Heteroceridae and *I. riparia* (~ 1 °C lower for every 0.9 mm extra length). The degree of intraspecific variation of heat tolerance observed in our study is comparable to what is reported in existing literature, (e.g., Terblanche et al. 2005; Jumbam et al. 2008; Chown et al. 2009; Mitchell and Hoffmann 2010, when standard deviations are recalculated from reported standard

errors). As we measured individuals straight from the field, without an acclimation period in the laboratory, we were able to obtain a nearly “complete estimation of within-species trait distribution” (sensu Violle et al. 2012) from the measured individuals in our community. We argue that to make statements on the effects of temperature on species performance and species interactions in natural ecosystems, heat tolerance should be measured directly from the field and encompass all relevant life stages of the species to prevent underestimation of trait variation. This is especially true when the intraspecific variation is important in understanding effects of climatic extremes on species interactions.

No evidence for heat wave induced phenotypic plasticity of CT_{max}

Phenotypic plasticity is a common way to mediate sudden adverse effects of changing environmental pressures (DeWitt and Scheiner 2004; Chown et al. 2007) and can be of particular importance when considering species interactions (Berg and Ellers 2010). Despite the highly dynamic character of the thermal regime at our field site, which is generally thought to favour phenotypic plasticity of the related traits (Agrawal 2001), we found no effects of the heating treatment on CT_{max} in any of the studied taxonomic groups. Such a result is inconsistent with a scenario of phenotypic plasticity of CT_{max} . Previous studies have reported that plastic responses in traits related to thermal maxima are often less pronounced than those of thermal minima (e.g., Chown 2001; Jumbam et al. 2008; Alford et al. 2012; van Heerwaarden et al. 2016; see also the recent review on plasticity in extreme environments by Chevin and Hoffmann 2017), indicating that this limited plasticity of thermal maxima might be a general phenomenon among arthropods.

Animals can also behaviourally respond to changes in temperature to avoid adverse conditions (e.g., Kearney et al. 2009; Buckley et al. 2015; Duffy et al. 2015; Woods et al. 2015; MacLean et al. 2016). Horizontal or vertical movement in the soil allows animals to utilize small-scale spatial variability in micro-habitat thermal conditions. Even small absolute differences in temperatures between micro-habitat patches can be ecologically significant by reducing or increasing temperature by the few degrees that may determine survival or death (Scheffers et al. 2014; Kaspari et al. 2015; Pincebourde and Casas 2015). For instance, dense tussocks can reduce the amplitude of temperature fluctuations by several degrees, as we observed in our field site (Fig. S8), and hiding in this buffered microhabitat might prevent exposure of individuals to lethal high temperatures (Huey et al. 2012). To prevent variation caused by differences in microhabitats, we choose our plots to have homogeneous vegetation without such dense tussocks. A similar reduction in exposure to

high temperatures may be achieved by vertical movement deeper into the soil (e.g., van Dooremalen et al. 2013). Although temperature differences down the soil profile can be large even over a few centimetres (Krab et al. 2015), we do not expect that our study organisms can fully utilize this temperature gradient. The vegetated beach ecosystem we studied has only limited possibilities for vertical stratification as the sandy soil is rather compact and often water locked. So both phenotypic and behavioural plasticity likely play a limited role in the patterns observed in our study.

In this study, we directly compared temperature sensitivity across trophic levels in a local terrestrial community. We observed interspecific differences in heat tolerance within a soil arthropod community, especially between the more temperature sensitive prey *I. riparia* (Collembola) and their more tolerant predators. As a consequence, during a heat wave the population size of prey might be reduced and negatively affect the growth rate or abundance of the predators, causing bottom-up effects in this food web. A severe reduction in Collembola availability could potentially also lead to a switch to a different prey species, including the possibility of intra-guild predation or cannibalism (Samu et al. 1999), and an associated change in community structure (Barton and Schmitz 2009; Rosenblatt and Schmitz 2016). In this study we focused specifically on a trait related to the effects of extreme temperatures, the Critical Thermal maximum (CT_{max}). We argue that applying a trait-based approach allows for the formulation of predictions on how trophic interactions in food webs will be affected by extreme climatic events (sensu McGill et al. 2006; Violle et al. 2007). Including ecophysiological trait measurements, such as heat tolerance, in field studies on effects of climate extremes on community composition can therefore be a powerful method to point out direct effects of abiotic change at the species level, but can also help to reveal physiological mismatches between interacting species, which might shape the community dynamics on longer time scales.

Acknowledgements We would like to thank the journal editors and three anonymous reviewers for their useful comments on an earlier version of this manuscript. We would also like to thank Herman A. Verhoef for constructive discussions at the initial stages of planning the experiment and Jasper Molleman and Kiki Kersten for providing the calibration curve used to calculate CT_{max} values from the water bath temperature. This study was financed by NWO Grant 821.01.015.

Author contribution statement OF, JE and MB conceived the ideas and designed the methodology; OF and MH performed the field experiments; all authors contributed to the collection of the data; OF analyzed the data; OF provided a first draft of the manuscript, which was improved by all authors. All authors gave final approval for publication.

Open Access This article is distributed under the terms of the Creative Commons Attribution 4.0 International License (<http://creativecommons.org/licenses/by/4.0/>), which permits unrestricted use, distribution, and reproduction in any medium, provided you give appropriate credit to the original author(s) and the source, provide a link to the Creative Commons license, and indicate if changes were made.

References

- Addo-Bediako A, Chown SL, Gaston KJ (2000) Thermal tolerance, climatic variability and latitude. *Proc R Soc B* 267:739–745. <https://doi.org/10.1098/rspb.2000.1065>
- Agrawal AA (2001) Phenotypic plasticity in the interactions and evolution of species. *Science* 294:321–326. <https://doi.org/10.1126/science.1060701>
- Ahrens L, Kraus JM (2006) Wolf spider (Araneae, Lycosidae) movement along a pond edge. *J Arachnol* 34:532–539. <https://doi.org/10.1636/05-85.1>
- Albert CH, Grassein F, Schurr FM et al (2011) When and how should intraspecific variability be considered in trait-based plant ecology? *Perspect Plant Ecol Evol Syst* 13:217–225. <https://doi.org/10.1016/j.ppees.2011.04.003>
- Alford L, Blackburn TM, Bale JS (2012) Effect of latitude and acclimation on the lethal temperatures of the peach-potato aphid *Myzus persicae*. *Agric For Entomol* 14:69–79. <https://doi.org/10.1111/j.1461-9563.2011.00553.x>
- Araújo MB, Ferri-Yáñez F, Bozinovic F et al (2013) Heat freezes niche evolution. *Ecol Lett* 16:1206–1219. <https://doi.org/10.1111/ele.12155>
- Bartlett MK, Zhang Y, Yang J et al (2016) Drought tolerance as a driver of tropical forest assembly: resolving spatial signatures for multiple processes. *Ecology* 97:503–514. <https://doi.org/10.1890/15-0468.1>
- Barton BT, Schmitz OJ (2009) Experimental warming transforms multiple predator effects in a grassland food web. *Ecol Lett* 12:1317–1325. <https://doi.org/10.1111/j.1461-0248.2009.01386.x>
- Bates D, Mächler M, Bolker BM, Walker SC (2015) Fitting linear mixed-effects models using lme4. *J Stat Softw* 67:1–48. <https://doi.org/10.18637/jss.v067.i01>
- Bateson P, Gluckman P, Hanson M (2014) The biology of developmental plasticity and the predictive adaptive response hypothesis. *J Physiol* 592:2357–2368. <https://doi.org/10.1113/jphysiol.2014.271460>
- Belén Arias M, Josefina Poupin M, Lardies MA (2011) Plasticity of life-cycle, physiological thermal traits and Hsp70 gene expression in an insect along the ontogeny: effect of temperature variability. *J Therm Biol* 36:355–362. <https://doi.org/10.1016/j.jtherbio.2011.06.011>
- Beniston M, Stephenson DB, Christensen OB et al (2007) Future extreme events in European climate: an exploration of regional climate model projections. *Clim Chang* 81:71–95. <https://doi.org/10.1007/s10584-006-9226-z>
- Berg MP, Ellers J (2010) Trait plasticity in species interactions: a driving force of community dynamics. *Evol Ecol* 24:617–629. <https://doi.org/10.1007/s10682-009-9347-8>
- Berg MP, Kiers ET, Driessen G et al (2010) Adapt or disperse: understanding species persistence in a changing world. *Glob Chang Biol* 16:587–598. <https://doi.org/10.1111/j.1365-2486.2009.02014.x>
- Bokhorst S, Phoenix GK, Bjerke JW et al (2012) Extreme winter warming events more negatively impact small rather than large soil fauna: shift in community composition explained by traits not taxa. *Glob Chang Biol* 18:1152–1162. <https://doi.org/10.1111/j.1365-2486.2011.02565.x>

- Bolhuis H, Fillinger L, Stal LJ (2013) Coastal microbial mat diversity along a natural salinity gradient. *PLoS One* 8:e63166. <https://doi.org/10.1371/journal.pone.0063166>
- Bowler K, Terblanche JS (2008) Insect thermal tolerance: what is the role of ontogeny, ageing and senescence? *Biol Rev* 83:339–355. <https://doi.org/10.1111/j.1469-185X.2008.00046.x>
- Buckley LB, Ehrenberger JC, Angilletta MJ Jr (2015) Thermoregulatory behaviour limits local adaptation of thermal niches and confers sensitivity to climate change. *Funct Ecol* 29:1038–1047. <https://doi.org/10.1111/1365-2435.12406>
- Chevin L-M, Hoffmann AA (2017) Evolution of phenotypic plasticity in extreme environments. *Philos Trans R Soc B Biol Sci* 372:20160138. <https://doi.org/10.1098/rstb.2016.0138>
- Chown SL (2001) Physiological variation in insects: hierarchical levels and implications. *J Insect Physiol* 47:649–660. [https://doi.org/10.1016/S0022-1910\(00\)00163-3](https://doi.org/10.1016/S0022-1910(00)00163-3)
- Chown SL, Slabber S, McGeoch MA et al (2007) Phenotypic plasticity mediates climate change responses among invasive and indigenous arthropods. *Proc Biol Sci* 274:2531–2537. <https://doi.org/10.1098/rspb.2007.0772>
- Chown SL, Jumbam KR, Sørensen JG, Terblanche JS (2009) Phenotypic variance, plasticity and heritability estimates of critical thermal limits depend on methodological context. *Funct Ecol* 23:133–140. <https://doi.org/10.1111/j.1365-2435.2008.01481.x>
- Cohen JM, Venesky MD, Sauer EL et al (2017) The thermal mismatch hypothesis explains host susceptibility to an emerging infectious disease. *Ecol Lett* 20:184–193. <https://doi.org/10.1111/ele.12720>
- De Boeck HJ, Dreesen FE, Janssens IA, Nijs I (2011) Whole-system responses of experimental plant communities to climate extremes imposed in different seasons. *New Phytol* 189:806–817. <https://doi.org/10.1111/j.1469-8137.2010.03515.x>
- Deutsch CA, Tewksbury JJ, Huey RB et al (2008) Impacts of climate warming on terrestrial ectotherms across latitude. *Proc Natl Acad Sci* 105:6668–6672. <https://doi.org/10.1073/pnas.0709472105>
- DeWitt TJ, Scheiner SM (2004) Phenotypic plasticity: functional and conceptual approaches. Oxford University Press, Oxford
- Dias ATC, Krab EJ, Mariën J et al (2013) Traits underpinning desiccation resistance explain distribution patterns of terrestrial isopods. *Oecologia* 172:667–677. <https://doi.org/10.1007/s00442-012-2541-3>
- Duffy GA, Coetzee BWT, Janion-Scheepers C, Chown SL (2015) Microclimate-based macrophysiology: implications for insects in a warming world. *Curr Opin Insect Sci* 11:84–89. <https://doi.org/10.1016/j.cois.2015.09.013>
- Easterling DR, Evans JL, Groisman PY et al (2000a) Observed variability and trends in extreme climatic events: a brief review. *Bull Am Meteorol Soc* 81:417–425. [https://doi.org/10.1175/1520-0477\(2000\)081<0417:OVATIE>2.3.CO;2](https://doi.org/10.1175/1520-0477(2000)081<0417:OVATIE>2.3.CO;2)
- Easterling DR, Meehl Ga, Parmesan C et al (2000b) Climate extremes: observations, modeling, and impacts. *Science* 289:2068–2074. <https://doi.org/10.1126/science.289.5487.2068>
- Ellers J, Dias ATC, Berg MP (2011) Interaction milieu explains performance of species in simple food webs along an environmental gradient. *Open Ecol J* 3:12–21. <https://doi.org/10.2174/1874213001003040012>
- Fox J, Weisberg S (2011) An R companion to applied regression, 2nd edn. Sage, Thousand Oaks
- Gilman SE, Urban MC, Tewksbury J et al (2010) A framework for community interactions under climate change. *Trends Ecol Evol* 25:325–331. <https://doi.org/10.1016/j.tree.2010.03.002>
- Greenspan SE, Bower DS, Roznik EA et al (2017) Infection increases vulnerability to climate change via effects on host thermal tolerance. *Sci Rep* 7:9349. <https://doi.org/10.1038/s41598-017-09950-3>
- Gutschick VP, BassiriRad H (2003) Extreme events as shaping physiology, ecology, and evolution of plants: toward a unified definition and evaluation of their consequences. *New Phytol* 160:21–42. <https://doi.org/10.1046/j.1469-8137.2003.00866.x>
- Hoffmann AA (2010) Physiological climatic limits in *Drosophila*: patterns and implications. *J Exp Biol* 213:870–880. <https://doi.org/10.1242/jeb.037630>
- Hoffmann AA, Chown SL, Clusella-Trullas S (2013) Upper thermal limits in terrestrial ectotherms: how constrained are they? *Funct Ecol* 27:934–949. <https://doi.org/10.1111/j.1365-2435.2012.02036.x>
- Huey RB, Kearney MR, Krockenberger A et al (2012) Predicting organismal vulnerability to climate warming: roles of behaviour, physiology and adaptation. *Philos Trans R Soc Lond B Biol Sci* 367:1665–1679. <https://doi.org/10.1098/rstb.2012.0005>
- Janion C, Worland MR, Chown SL (2009) Assemblage level variation in springtail lower lethal temperature: the role of invasive species on sub-Antarctic Marion Island. *Physiol Entomol* 34:284–291. <https://doi.org/10.1111/j.1365-3032.2009.00689.x>
- Jentsch A, Kreyling J, Beierkuhnlein C (2007) A new generation of climate change experiments: events, not trends. *Front Ecol Environ* 5:365–374. [https://doi.org/10.1890/1540-9295\(2007\)5\[365:ANGOCE\]2.0.CO;2](https://doi.org/10.1890/1540-9295(2007)5[365:ANGOCE]2.0.CO;2)
- Jumbam KR, Terblanche JS, Deere JA et al (2008) Critical thermal limits and their responses to acclimation in two sub-Antarctic spiders: *Myro kerguelensis* and *Prinerigone vagans*. *Polar Biol* 31:215–220. <https://doi.org/10.1007/s00300-007-0349-0>
- Kaspari M, Clay NA, Lucas J et al (2015) Thermal adaptation generates a diversity of thermal limits in a rainforest ant community. *Glob Chang Biol* 21:1092–1102. <https://doi.org/10.1111/gcb.12750>
- Kayler ZE, De Boeck HJ, Fatichi S et al (2015) Experiments to confront the environmental extremes of climate change. *Front Ecol Environ* 13:219–225. <https://doi.org/10.1890/140174>
- Kearney M, Shine R, Porter WP (2009) The potential for behavioral thermoregulation to buffer “cold-blooded” animals against climate warming. *Proc Natl Acad Sci* 106:3835–3840. <https://doi.org/10.1073/pnas.0808913106>
- Kellermann V, Overgaard J, Hoffmann AA et al (2012) Upper thermal limits of *Drosophila* are linked to species distributions and strongly constrained phylogenetically. *Proc Natl Acad Sci USA* 109:16228–16233. <https://doi.org/10.1073/pnas.1207553109>
- Kingsolver JG, Woods HA, Buckley LB et al (2011) Complex life cycles and the responses of insects to climate change. *Integr Comp Biol* 51:719–732. <https://doi.org/10.1093/icb/ibr015>
- Klok CJ, Sinclair BJ, Chown SL (2004) Upper thermal tolerance and oxygen limitation in terrestrial arthropods. *J Exp Biol* 207:2361–2370. <https://doi.org/10.1242/jeb.01023>
- Krab EJ, Van Schroyen Lantman IM, Cornelissen JHC, Berg MP (2013) How extreme is an extreme climatic event to a subarctic peatland springtail community? *Soil Biol Biochem* 59:16–24. <https://doi.org/10.1016/j.soilbio.2012.12.012>
- Krab EJ, Cornelissen JHC, Berg MP (2015) A simple experimental set-up to disentangle the effects of altered temperature and moisture regimes on soil organisms. *Methods Ecol Evol* 6:1159–1168. <https://doi.org/10.1111/2041-210X.12408>
- Langlands PR, Brennan KEC, Framenau VW, Main BY (2011) Predicting the post-fire responses of animal assemblages: testing a trait-based approach using spiders. *J Anim Ecol* 80:558–568. <https://doi.org/10.1111/j.1365-2656.2010.01795.x>
- Lenth RV (2016) Least-squares means: the R package lsmeans. *J Stat Softw* 69:1–33. <https://doi.org/10.18637/jss.v069.i01>
- Lindo Z, Whiteley J, Gonzalez A (2012) Traits explain community disassembly and trophic contraction following experimental environmental change. *Glob Chang Biol* 18:2448–2457. <https://doi.org/10.1111/j.1365-2486.2012.02725.x>
- Lutterschmidt WI, Hutchison VH (1997) The critical thermal maximum: history and critique. *Can J Zool* 75:1561–1574. <https://doi.org/10.1139/z97-783>

- MacLean HJ, Higgins JK, Buckley LB, Kingsolver JG (2016) Geographic divergence in upper thermal limits across insect life stages: does behavior matter? *Oecologia* 181:107–114. <https://doi.org/10.1007/s00442-016-3561-1>
- McGill BJ, Enquist BJ, Weiher E, Westoby M (2006) Rebuilding community ecology from functional traits. *Trends Ecol Evol* 21:178–185. <https://doi.org/10.1016/j.tree.2006.02.002>
- Mitchell KA, Hoffmann AA (2010) Thermal ramping rate influences evolutionary potential and species differences for upper thermal limits in *Drosophila*. *Funct Ecol* 24:694–700. <https://doi.org/10.1111/j.1365-2435.2009.01666.x>
- Mitchell KA, Sgrò CM, Hoffmann AA (2011) Phenotypic plasticity in upper thermal limits is weakly related to *Drosophila* species distributions. *Funct Ecol* 25:661–670. <https://doi.org/10.1111/j.1365-2435.2010.01821.x>
- Moretti M, Dias ATC, de Bello F et al (2017) Handbook of protocols for standardized measurement of terrestrial invertebrate functional traits. *Funct Ecol* 31:558–567. <https://doi.org/10.1111/1365-2435.12776>
- Nakazawa T (2014) Ontogenetic niche shifts matter in community ecology: a review and future perspectives. *Popul Ecol* 57:347–354. <https://doi.org/10.1007/s10144-014-0448-z>
- Nowakowski AJ, Whitfield SM, Eskew EA et al (2016) Infection risk decreases with increasing mismatch in host and pathogen environmental tolerances. *Ecol Lett* 19:1051–1061. <https://doi.org/10.1111/ele.12641>
- Ockendon N, Baker DJ, Carr JA et al (2014) Mechanisms underpinning climatic impacts on natural populations: altered species interactions are more important than direct effects. *Glob Chang Biol* 20:2221–2229. <https://doi.org/10.1111/gcb.12559>
- Ojala R, Huhta V (2001) Dispersal of microarthropods in forest soil. *Pedobiologia (Jena)* 45:443–450. <https://doi.org/10.1078/0031-4056-00098>
- Petchey OL, McPhearson PT, Casey TM, Morin PJ (1999) Environmental warming alters food-web structure and ecosystem function. *Nature* 402:69–72. <https://doi.org/10.1038/47023>
- Pincebourde S, Casas J (2015) Warming tolerance across insect ontogeny: influence of joint shifts in microclimates and thermal limits. *Ecology* 96:986–997. <https://doi.org/10.1890/14-0744.1.sm>
- Puentes A, Torp M, Weih M, Björkman C (2015) Direct effects of elevated temperature on a tri-trophic system: *Salix*, leaf beetles and predatory bugs. *Arthropod Plant Interact* 9:567–575. <https://doi.org/10.1007/s11829-015-9401-0>
- R Core Team (2016) R: A language and environment for statistical computing. R Foundation for Statistical Computing, Vienna, Austria. Version 3.3.1. <https://www.r-project.org/>
- Rahmstorf S, Coumou D (2011) Increase of extreme events in a warming world. *Proc Natl Acad Sci* 108:17905–17909. <https://doi.org/10.1073/pnas.1101766108>
- Rosenblatt AE, Schmitz OJ (2016) Climate change, nutrition, and bottom-up and top-down food web processes. *Trends Ecol Evol* 31:965–975. <https://doi.org/10.1016/j.tree.2016.09.009>
- RStudio Team (2015) RStudio: integrated development for R. RStudio, Inc., Boston. Version 1.0.143. <http://www.rstudio.com/>
- Samu F, Toft S, Kiss B (1999) Factors influencing cannibalism in the wolf spider *Pardosa agrestis* (Araneae, Lycosidae). *Behav Ecol Sociobiol* 45:349–354. <https://doi.org/10.1007/s002650050>
- Scheffers BR, Edwards DP, Diesmos A et al (2014) Microhabitats reduce animal's exposure to climate extremes. *Glob Chang Biol* 20:495–503. <https://doi.org/10.1111/gcb.12439>
- Sentis A, Hemptinne J-L, Brodeur J (2013) Effects of simulated heat waves on an experimental plant–herbivore–predator food chain. *Glob Chang Biol* 19:833–842. <https://doi.org/10.1111/gcb.12094>
- Sunday JM, Bates AE, Dulvy NK (2011) Global analysis of thermal tolerance and latitude in ectotherms. *Proc R Soc B* 278:1823–1830. <https://doi.org/10.1098/rspb.2010.1295>
- Sutherland WJ, Freckleton RP, Godfray HCJ et al (2013) Identification of 100 fundamental ecological questions. *J Ecol* 101:58–67. <https://doi.org/10.1111/1365-2745.12025>
- Terblanche JS, Sinclair BJ, Klok CJ et al (2005) The effects of acclimation on thermal tolerance, desiccation resistance and metabolic rate in *Chirodica chalconota* (Coleoptera: Chrysomelidae). *J Insect Physiol* 51:1013–1023. <https://doi.org/10.1016/j.jinsphys.2005.04.016>
- Terblanche JS, Deere JA, Clusella-Trullas S et al (2007) Critical thermal limits depend on methodological context. *Proc R Soc B* 274:2935–2942. <https://doi.org/10.1098/rspb.2007.0985>
- Tylianakis JM, Didham RK, Bascompte J, Wardle DA (2008) Global change and species interactions in terrestrial ecosystems. *Ecol Lett* 11:1351–1363. <https://doi.org/10.1111/j.1461-0248.2008.01250.x>
- van Dooremalen C, Berg MP, Eilers J (2013) Acclimation responses to temperature vary with vertical stratification: implications for vulnerability of soil-dwelling species to extreme temperature events. *Glob Chang Biol* 19:975–984. <https://doi.org/10.1111/gcb.12081>
- van Heerwaarden B, Kellermann V, Sgrò CM (2016) Limited scope for plasticity to increase upper thermal limits. *Funct Ecol* 30:1947–1956. <https://doi.org/10.1111/1365-2435.12687>
- van Wingerden WKRE, den Hollander J (1981) Ecology of arthropods living on the wadden sea islands. In: Report 10: Terrestrial and freshwater fauna of the Wadden Sea area, Final report of the section “Terrestrial Fauna” of the Wadden Sea Working Group. pp 32–127
- Vasseur DA, McCann KS (2005) A mechanistic approach for modeling temperature-dependent consumer–resource dynamics. *Am Nat* 166:184–198. <https://doi.org/10.1086/431285>
- Violle C, Navas M-L, Vile D et al (2007) Let the concept of trait be functional! *Oikos* 116:882–892. <https://doi.org/10.1111/j.2007.0030-1299.15559.x>
- Violle C, Enquist BJ, McGill BJ et al (2012) The return of the variance: intraspecific variability in community ecology. *Trends Ecol Evol* 27:244–252. <https://doi.org/10.1016/j.tree.2011.11.014>
- Voigt W, Perner J, Davis AJ et al (2003) Trophic levels are differentially sensitive to climate. *Ecology* 84:2444–2453. <https://doi.org/10.1890/02-0266>
- Walther G-R (2010) Community and ecosystem responses to recent climate change. *Philos Trans R Soc London B Biol Sci* 365:2019–2024. <https://doi.org/10.1098/rstb.2010.0021>
- Woods HA, Dillon ME, Pincebourde S (2015) The roles of microclimatic diversity and of behavior in mediating the responses of ectotherms to climate change. *J Therm Biol* 54:86–97. <https://doi.org/10.1016/j.jtherbio.2014.10.002>
- Zizzari ZV, Eilers J (2014) Rapid shift in thermal resistance between generations through maternal heat exposure. *Oikos* 123:1365–1370. <https://doi.org/10.1111/oik.01496>
- Zizzari ZV, van Straalen NM, Eilers J (2016) Transgenerational effects of nutrition are different for sons and daughters. *J Evol Biol* 29:1317–1327. <https://doi.org/10.1111/jeb.12872>