

Research Article

Hyperuricemia and Incident Cardiovascular Disease and Noncardiac Vascular Events in Patients with Rheumatoid Arthritis

Daniel Kuo,¹ Cynthia S. Crowson,^{2,3} Sherine E. Gabriel,^{2,3} and Eric L. Matteson^{2,3}

¹ Department of Medicine, Mayo Clinic College of Medicine, 200 1st Street SW, Rochester, MN 55905, USA

² Department of Health Sciences Research, Mayo Clinic College of Medicine, 200 1st Street SW, Rochester, MN 55905, USA

³ Division of Rheumatology, Mayo Clinic College of Medicine, 200 1st Street SW, Rochester, MN 55905, USA

Correspondence should be addressed to Eric L. Matteson; matteson.eric@mayo.edu

Received 17 June 2014; Accepted 4 August 2014; Published 17 August 2014

Academic Editor: Shinichi Kawai

Copyright © 2014 Daniel Kuo et al. This is an open access article distributed under the Creative Commons Attribution License, which permits unrestricted use, distribution, and reproduction in any medium, provided the original work is properly cited.

Objective. To evaluate whether hyperuricemia is a risk factor for cardiovascular disease (CVD) in patients with rheumatoid arthritis (RA). **Methods.** A population-based inception cohort of patients diagnosed between 1980 and 2007 with adult-onset RA was assembled. A comparison cohort of age- and sex-matched subjects without RA (non-RA) was also assembled. All clinically obtained uric acid values were collected. CVD and noncardiac vascular events were recorded for each patient. Cox proportional hazards models were used to assess the impact of hyperuricemia on development of CVD, mortality, and noncardiac vascular disease. **Results.** In patients without RA, hyperuricemia was associated with heart failure (HR: 1.95; 95% CI: 1.13–3.39) and CVD (HR: 1.59; 95% CI: 0.99–2.55). In patients with RA, hyperuricemia was not significantly associated with CVD but was significantly associated with peripheral arterial events (HR: 2.52; 95% CI: 1.17–5.42). Hyperuricemia appeared to be more strongly associated with mortality among RA patients (HR: 1.96; 95% CI: 1.45–2.65) than among the non-RA subjects (HR: 1.57; 95% CI: 1.09–2.24). **Conclusion.** In patients with RA, hyperuricemia was a significant predictor of peripheral arterial events and mortality but not of CVD.

1. Introduction

Patients with rheumatoid arthritis (RA) are at increased risk to develop cardiovascular disease (CVD) [1, 2] and experience cardiovascular mortality [3, 4]. Although treatments for RA have improved over time, cardiovascular mortality has remained relatively unchanged [4] and is responsible for 50 percent of premature deaths in patients with RA [5, 6]. Traditional cardiovascular risk factors including smoking, hypertension, hyperlipidemia, obesity, and diabetes are important factors but do not adequately account for the excess burden of CVD in RA patients [7].

There is growing evidence that serum uric acid (SUA) may play a role in CVD in the general population [8, 9]. Indeed epidemiologic studies have found that hyperuricemia appears to be an independent risk factor for hypertension [10], heart failure (HF) [11], coronary artery disease [12], and stroke [13]. Experimental studies have also shown that uric acid is a functionally active molecule that can contribute to

proatherogenic processes including inflammation, endothelial dysfunction, and oxidative stress [14].

The role of hyperuricemia in RA has not been well studied and only a few papers have addressed the subject [15, 16]. However, hyperuricemia is common in the general population with a prevalence of 6–8% among healthy adults and as many as 1 in 3 adults with uncontrolled hypertension and several CVD risk factors [17]. Given the excess burden of cardiovascular disease in patients with RA and the potential role of serum uric acid, the purpose of this study was to examine the effects of hyperuricemia on CVD specifically in patients with RA.

2. Patients and Methods

2.1. Study Population. An inception cohort of all cases of rheumatoid arthritis (RA) first diagnosed between January 1, 1980 and December 31, 2007 ($n = 813$) among Olmsted

County residents ≥ 18 years of age was assembled as previously described [18]. The incidence date was defined as the earliest date at which the patient fulfilled at least 4 of the 7 American College of Rheumatology (ACR; formerly, the American Rheumatism Association) 1987 classification criteria for RA [19]. A comparison cohort of subjects without RA with similar age, sex, and calendar year was also assembled. All patients in both cohorts were followed up longitudinally through their entire medical records until death, migration from Olmsted County, or December 31, 2008. The study was approved by the Institutional Review Boards of the Mayo Clinic and Olmsted Medical Center.

2.2. Data Collection. All clinically obtained uric acid values were collected. Mayo Medical Laboratory reference ranges for adults by sex were used. Hyperuricemia was defined as serum uric acid (SUA) > 8.0 mg/dL for males and > 6.1 mg/dL for females.

Clinically available data for traditional cardiovascular risk factors were collected, including age, gender, race, smoking history, body mass index (BMI), diabetes mellitus, hypertension, and dyslipidemia. Data from the medical record were also collected for factors that could affect SUA levels including estimated glomerular filtration rate (GFR), alcoholism, low-dose aspirin, and urate lowering therapy.

CVD recorded for each patient included angina, myocardial infarction (MI; hospitalized or silent), revascularization procedures, and HF. Noncardiac vascular diseases (NCVD) included stroke, thromboembolism, and peripheral vascular disease [20]. Mortality data were also collected.

2.3. Statistical Methods. Descriptive statistics (means, percentages, etc.) were used to summarize the data. Poisson regression models with smoothing splines were used to examine trends in uric acid levels according to time since RA incidence/index date with adjustment for age and sex. The cumulative incidence of hyperuricemia adjusted for the competing risk of death was estimated [21]. These methods are similar to Kaplan-Meier method with censoring of patients who are still alive at last follow-up. However, patients who die before experiencing hyperuricemia are appropriately accounted for to avoid the overestimation of the rate of occurrence of hyperuricemia, which can occur if such subjects are simply censored.

Patients who were diagnosed with hyperuricemia prior to the diagnosis of RA, or prior to the index date for subjects in the non-RA comparison cohort, were excluded from the analysis of cumulative incidence. A sensitivity analysis was performed to examine the possibility that differences in testing rates might influence cumulative incidence results. A subset of uric acid tests was randomly selected from patients with RA to mimic the testing rate in patients without RA for the sensitivity analysis. Cumulative incidence comparisons between the cohorts were performed using methods by Gray [22].

Cox proportional hazards models were used to compare the rate of development of hyperuricemia between patients with RA and the non-RA comparison cohort. Cox models

were also used to assess the impact of hyperuricemia on the development of CVD, NCVD, or mortality among patients with RA and non-RA subjects. Age was used as the time scale for these models to provide optimal adjustment for age under the assumption that age is likely the most important time determinate of cardiovascular disease. Subjects entered the model at the age they met criteria for RA and remained in the model until the age of each cardiac or vascular disease event. Subjects without events were censored at the age of death or last follow-up. The models were also stratified by sex. Traditional cardiovascular risk factors as well as factors that could affect both uric acid levels and the outcomes of interest (e.g., GFR, alcoholism, low-dose aspirin, and urate-lowering therapy) were included in these models as adjusters. Time-dependent covariates were used to model risk factors that developed over time. These time-dependent covariates allowed patients to be modeled as unexposed to the risk factor during the follow-up time prior to development of the risk factor and then change to exposed following development of the risk factor. Interactions between cohort and hyperuricemia were examined.

3. Results

The study population included 813 patients with RA and 813 subjects without RA. The average age at RA incidence (index date for the non-RA cohort) was 55.9 (SD 15.7) years and 556 (68%) were female in each cohort (Table 1). There was no difference in the presence of hyperuricemia at RA incidence/index date between cohorts ($P = 0.22$). Rates of testing of SUA were higher among patients with RA (0.77 tests per 1 person-year of follow-up) than among non-RA subjects (0.50 per 1 person-year of follow-up; $P < 0.001$).

There were no apparent assay changes in SUA ranges by calendar years of interest (figure not shown). Examination of trends in serum uric acid according to time since RA incidence/index date revealed that the average serum uric acid decreases in RA patients prior to diagnosis of RA (Figure 1). SUA remains lower in RA on average than in non-RA for the first 10 years of RA disease duration.

The cumulative incidence of hyperuricemia was higher in the RA patients compared to the non-RA subjects ($18.1\% \pm 1.7\%$ at 10 years in RA versus $11.5\% \pm 1.5\%$ in non-RA; $P = 0.008$, Table 2; Figure 2(a)). However, after randomly resampling RA patient data to mimic the testing rate of non-RA subjects, the difference in cumulative incidence of hyperuricemia between groups disappeared ($12.9\% \pm 1.5\%$ at 10 years in RA versus $11.5\% \pm 1.5\%$ in non-RA; $P = 0.64$, Table 2; Figure 2(b)). There was no difference in the rate of development of hyperuricemia among RA and non-RA by sex ($P = 0.61$ for RA/non-RA by male/female interaction).

The associations between hyperuricemia and CVD/mortality were more consistent in patients without RA than in patients with RA (Table 3). However, hyperuricemia appeared to be more strongly associated with mortality among the RA (Hazard Ratio [HR]: 2.00; 95% confidence interval [CI]: 1.51, 2.64) than among the non-RA patients (HR: 1.59; 95% CI: 1.12, 2.27), but this difference did not reach

TABLE 1: Characteristics of 813 patients with rheumatoid arthritis (RA) and 813 subjects without RA (non-RA).

	RA (<i>n</i> = 813)	Non-RA (<i>n</i> = 813)	<i>P</i> value
Age at incidence/index, years, mean \pm SD	55.9 \pm 15.7	55.9 \pm 15.7	0.99
Sex, female, <i>n</i> (%)	556 (68%)	556 (68%)	1.0
Race			0.023
White	761 (93.6%)	771 (94.8%)	0.10 (or white versus nonwhite)
American Indian/Alaska native	3 (0.4%)	1 (0.1%)	
Asian	21 (2.6%)	14 (1.7%)	
Black or African American	5 (0.6%)	12 (1.5%)	
Native Hawaiian or other Pacific Islander	4 (0.5%)	0 (0%)	
More than 1 race	11 (1.4%)	3 (0.4%)	
Unknown	8 (1.0%)	12 (1.5%)	
Length of follow-up, years, mean \pm SD	9.6 \pm 6.9	10.9 \pm 7.2	—
Smoking status at incidence/index, <i>n</i> (%)			
Never	364 (45%)	435 (54%)	0.002
Current	178 (22%)	144 (18%)	
Former	271 (33%)	234 (29%)	
Body mass index at incidence/index, mean \pm SD	27.8 \pm 6.2	27.8 \pm 7.8	0.74
Diabetes mellitus at incidence/index, <i>n</i> (%)	79 (10%)	67 (8%)	0.30
Hypertension at incidence/index, <i>n</i> (%)	307 (38%)	275 (34%)	0.10
Dyslipidemia at incidence/index, <i>n</i> (%)	444 (55%)	391 (48%)	0.008
eGFR < 60 mL/min/1.73 m ² at incidence/index, <i>n</i> (%)	74 (9%)	74 (9%)	1.0
Alcoholism at incidence/index, <i>n</i> (%)	56 (7%)	55 (7%)	0.92
Low-dose aspirin at incidence/index, <i>n</i> (%)	130 (16%)	135 (17%)	0.74
CVD at incidence/index, <i>n</i> (%)	95 (12%)	99 (12%)	0.76
Serum uric acid at incidence/index date*, mg/dL	(<i>n</i> = 616)	(<i>n</i> = 510)	
Mean \pm SD	5.1 \pm 2.6	5.2 \pm 1.5	0.011
Median, IQR	4.8 (3.7, 5.9)	5.0 (4.1, 6.1)	
Total number of uric acid tests performed**	5231	3258	—
Number of tests per patient, mean (SD)	8.4 (11.7)	6.9 (8.9)	—
Rate of uric acid tests per person-year of follow-up	0.77 per 1 py	0.50 per 1 py	<0.001
Presence of hyperuricemia at incidence/index, <i>n</i> (%)	62/616 (10%)	63/510 (12%)	0.22
Use of urate lowering therapy at incidence/index date	7 (1%)	8 (1%)	0.80
Use of urate lowering therapy, ever	28 (3%)	28 (3%)	1.0

* Closest to incidence/index date within \pm 90 days.

** From incidence/index date to last follow-up.

IQR: interquartile range; *n*: number; SD: standard deviation; py: person-year; eGFR: estimated glomerular filtration rate.

TABLE 2: Cumulative incidence of hyperuricemia in patients with rheumatoid arthritis (RA) compared to subjects without RA (non-RA).

Group	Number of patients at risk (RA/non-RA)	Number of patients with outcome (RA/non-RA)	Cumulative incidence (%) of hyperuricemia (\pm SE)	<i>P</i> value compared to non-RA
Non-RA	502	69	10 yr: 11.5 \pm 1.5 20 yr: 16.9 \pm 2.0	0.008
RA	630	111	10 yr: 18.1 \pm 1.7 20 yr: 24.6 \pm 2.3	
RA with testing rate of non-RA*	630	81	10 yr: 12.9 \pm 1.5 20 yr: 18.1 \pm 2.0	0.64

* Based on randomly selected uric acid tests for RA patients to mimic lower testing rate of the non-RA cohort.

TABLE 3: Associations between hyperuricemia and cardiovascular disease/mortality in patients with rheumatoid arthritis (RA) and subjects without RA (non-RA).

N events in RA/non-RA		MI HR (95% CI)	CVD HR (95% CI)	HF HR (95% CI)	Death HR (95% CI)
		46/41	137/108	92/69	229/163
Model 1	RA	1.01 (0.50, 2.06)	1.00 (0.66, 1.52)	1.31 (0.82, 2.10)	2.00 (1.51, 2.64)
	Non-RA	1.84 (0.91, 3.72)	1.81 (1.14, 2.87)	1.88 (1.09, 3.25)	1.59 (1.12, 2.27)
Model 2	RA	0.86 (0.41, 1.80)	0.88 (0.57, 1.38)	1.18 (0.71, 1.95)	1.96 (1.45, 2.65)
	Non-RA	1.66 (0.81, 3.40)	1.59 (0.99, 2.55)	1.95 (1.13, 3.39)	1.57 (1.09, 2.24)
Model 3	RA	0.69 (0.31, 1.54)	0.94 (0.58, 1.51)	1.04 (0.61, 1.77)	1.85 (1.35, 2.55)
	Non-RA	1.37 (0.63, 2.96)	1.42 (0.84, 2.39)	1.59 (0.89, 2.84)	1.51 (1.03, 2.22)

Model 1: age, sex, and calendar year adjusted.

Model 2: Model 1, additionally adjusted for smoking, hypertension, obesity (BMI ≥ 30 kg/m²), diabetes mellitus, and dyslipidemia.

Model 3: Model 2, additionally adjusted for eGFR < 60, urate lowering therapy, alcoholism, and low-dose aspirin use.

MI: myocardial infarction; CVD: cardiovascular disease (composite of MI, revascularization procedures, angina, and heart failure.); HF: heart failure; Death: all-cause mortality; HR: hazard ratio; CI: confidence interval.

TABLE 4: Associations between hyperuricemia and noncardiac vascular disease in patients with rheumatoid arthritis (RA). Data on subjects without RA were omitted as they were only available for part of the study period (1995–2007).

N events in RA		Cerebrovascular events HR (95% CI)	Peripheral arterial events HR (95% CI)	Venous thromboembolic events HR (95% CI)
		49	36	48
Model 1	RA	1.74 (0.93, 3.23)	2.62 (1.27, 5.41)	1.56 (0.83, 2.95)
	RA	1.39 (0.72, 2.67)	2.52 (1.17, 5.42)	1.27 (0.66, 2.45)
Model 3	RA	1.23 (0.61, 2.46)	2.54 (1.13, 5.70)	1.44 (0.74, 2.81)

Model 1: age, sex, and calendar year adjusted.

Model 2: Model 1, plus being adjusted for smoking, hypertension, obesity (BMI ≥ 30 kg/m²), diabetes mellitus, and dyslipidemia.

Model 3: Model 2, plus being adjusted for eGFR < 60, urate lowering therapy, alcoholism, and low-dose aspirin use.

HR: hazard ratio; CI: confidence interval.

statistical significance (interaction $P = 0.32$). In the patients with RA, hyperuricemia was also associated with increased risk of peripheral arterial events (HR: 2.62; 95% CI: 1.27, 5.41; Table 4).

4. Discussion

In this population-based study we examined the role of hyperuricemia on cardiovascular disease in patients with and without RA. Among subjects without RA, hyperuricemia was associated with an increased risk of HF and CVD. By contrast, among patients with RA, hyperuricemia was not associated with increased risk of MI, HF, or CVD. However, hyperuricemia was a predictor of peripheral arterial events in RA patients. Hyperuricemia was also a predictor of all-cause mortality in both groups. These findings suggest that in patients with RA hyperuricemia may confer increased risk

of peripheral arterial events and all-cause mortality but not necessarily cardiac disease.

Baseline serum uric acid levels in this study were similar to those reported for nationally representative data of adults in the United States [23]. The prevalence of hyperuricemia among healthy US adults has been reported to be 6–8% but increased among persons with hypertension and CVD risk factors [17]. Similarly, in our study, a proportion of subjects had cardiovascular comorbidities and higher rates of hyperuricemia. Baseline prevalence of hyperuricemia was similar between RA patients and non-RA subjects in our study.

RA and gout cooccur infrequently [24]. As a result, data are limited regarding the occurrence of hyperuricemia in patients with RA. We calculated the cumulative incidence of hyperuricemia in patients with and without RA and found that during follow-up, patients with RA appeared to develop hyperuricemia more frequently than their

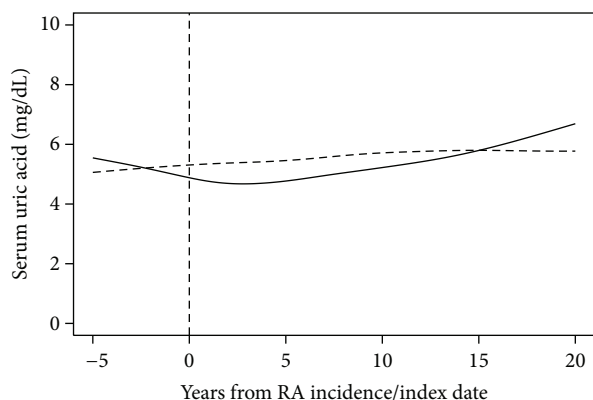


FIGURE 1: Trends in serum uric acid over time in patients with rheumatoid arthritis (RA; solid line) and without RA (dashed line).

non-RA counterparts. However, when uric acid data for the RA cohort were randomly sampled at the same rate as the non-RA comparison cohort, the cumulative incidence of hyperuricemia in the resampled dataset was similar to that of the non-RA group. This suggests that excess hyperuricemia was incidentally found in RA patients due to higher rates of testing. A small study of healthy subjects found that it is not uncommon to detect transient hyperuricemia with repeated SUA measurements [25].

In many epidemiologic studies of the general population, hyperuricemia has been associated with increased risk of cardiac disease including myocardial infarction [26, 27], HF [11], and coronary heart disease [12]. However, there are also studies which have suggested that uric acid is not an independent risk factor for heart disease [8, 9]. For example, a recent Mendelian randomization study by Palmer et al. used a single nucleotide polymorphism of the SLC2A9 urate transporter gene to evaluate the effects of hyperuricemia on ischemic heart disease and found no association [9]. They suggested that obesity could be an important confounder when studying CVD outcomes. It is still debatable whether uric acid is a causal agent in cardiovascular disease pathogenesis or rather a biomarker of disease.

Subjects in the non-RA cohort of our study were reflective of the general population within Olmsted County. In these patients, hyperuricemia was associated with increased risk of MI, HF, and CVD after adjusting for age, sex, and calendar year. Increased risk for MI did not reach statistical significance, but this was likely due to a small number of observed events. Upon further adjustment for traditional cardiovascular risk factors, hazard ratios for MI and CVD were attenuated while risk of HF increased slightly. These associations were further attenuated after adjusting for reduced kidney function, alcoholism, low-dose aspirin, and urate-lowering therapy.

In contrast, few studies have examined the potential effects of hyperuricemia on CVD in patients with RA. Results from a cross-sectional study of 400 RA patients suggested that higher serum uric acid levels were associated with an increased likelihood of CVD prevalence even after adjusting for confounders (OR 1.36 per 1mg/dL increase in serum

uric acid) [16]. However, in our cohort of RA patients, hyperuricemia was not associated with increased risk of cardiac disease incidence, despite greater numbers of cardiac events compared to non-RA subjects.

Several factors could have affected the observed result. One possibility is that the null hypothesis, that hyperuricemia has no effect on CVD, could be true. However, some patients with transient hyperuricemia were likely included in the analysis due to a higher rate of testing among patients with RA. The inclusion of such patients could dilute the effects of hyperuricemia on cardiovascular outcome. Another consideration is that, on average, patients with RA started the study with lower serum uric acid levels and continued to have lower levels for the first 10 years of disease. Reasons for this are speculative but may relate to medication effects, comorbidity burden. The effect though is that RA patients may have had less exposure to uric acid prior to incidence of hyperuricemia and therefore experience fewer adverse cardiac outcomes related to the exposure. An alternative possibility is that hyperuricemia may have relatively less impact on cardiac processes in the context of disease-specific factors in RA (e.g., systemic inflammation), as has been suggested for some traditional CVD risk factors [7].

In terms of noncardiac vascular outcomes, diseases of the peripheral arteries were examined as a composite outcome that included peripheral arterial disease (PAD), aortic aneurysm, renal artery stenosis, and arterial thromboembolism. Few other studies have looked at the association of uric acid levels with peripheral arterial disease (PAD). One cross-sectional study of the US population found that higher SUA was associated with PAD [28]. A case-control study reported an association between SUA and increased risk of PAD, though the relationship was not statistically significant [29]. Among patients in the RA cohort of our study, hyperuricemia was a predictor for the occurrence of peripheral arterial events even after adjusting for traditional cardiovascular risk factors, including smoking.

Mechanisms which may contribute to vascular disease in patients with hyperuricemia include uric acid's ability to promote endothelial dysfunction [30], decrease nitrous oxide bioavailability, and increase oxidative stress [14]. Uric acid has also been associated with increased inflammatory markers such as C-reactive protein [31] which have been implicated in peripheral vascular disease [32]. Such effects may interact synergistically with the high degree of systemic inflammation in RA to promote increased atherogenesis.

SUA has been found to be associated with all-cause mortality in many but not all studies. A recent meta-analysis found that across studies of the general population, SUA in the highest level (e.g., quartile, quintile) compared to the lowest level was associated with all-cause mortality (pooled RR 1.24; 95% CI: 1.09–1.42) [33]. Interestingly, one study of high-functioning community-dwelling seniors found that inflammation was an important confounder in their analysis of SUA and mortality in women but not in men [34]. Given the high levels of systemic inflammation that affect persons with RA, it is possible that underlying inflammation contributed to the increased risk of all-cause mortality

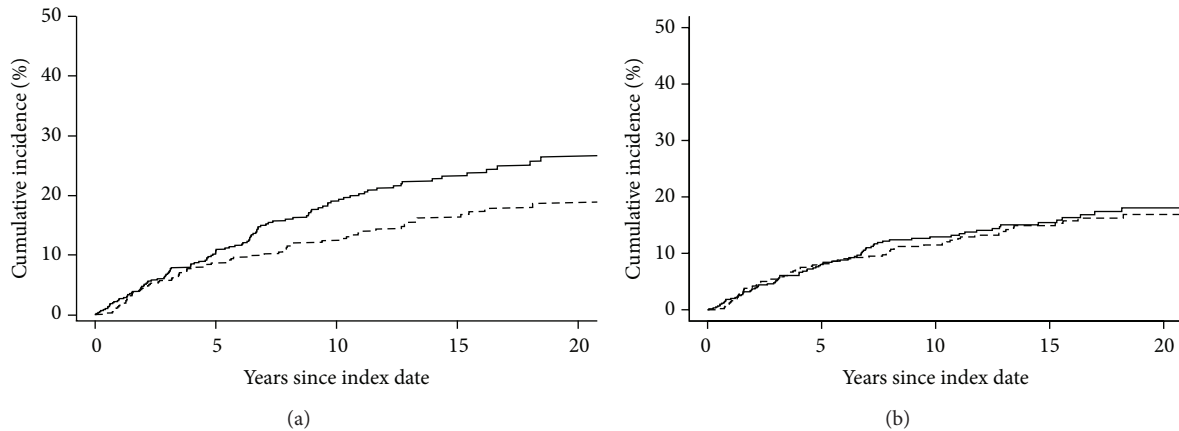


FIGURE 2: (a) Cumulative incidence of hyperuricemia in patients with rheumatoid arthritis (RA) versus subjects without RA (non-RA). The solid line is RA and dashed line is non-RA ($P = 0.008$). (b) Cumulative incidence of hyperuricemia in patients with RA (based on randomly selected uric acid tests using lower testing rate of the non-RA cohort) versus subjects without RA (non-RA). The solid line is RA and dashed line is non-RA ($P = 0.64$).

associated with hyperuricemia in the RA cohort of our study.

There were some limitations to our study. Since data were retrospectively collected from the medical record, only clinically obtained data were available. Detailed information about diuretic use was not available. Also, the patient population consisted predominantly of Caucasian patients, so results may or may not necessarily be generalizable to patients of other ethnicities [35]. Strengths of our study include that it was a population-based study with long follow-up duration.

In summary, we evaluated hyperuricemia as a possible risk factor for cardiovascular disease in patients with RA. The results of our study suggest that hyperuricemia may not be a risk factor for excess cardiovascular disease in patients with RA. However, hyperuricemia was associated with increased risk of peripheral arterial events and all-cause mortality. Further research should investigate other nontraditional risk factors of cardiovascular disease in patients with RA.

Conflict of Interests

The authors declare that there is no conflict of interests regarding the publication of this paper.

Disclaimer

The contents of this work are solely the responsibility of the authors and do not necessarily represent the official views of the NIH or RRF.

Acknowledgments

This paper was supported by the National Institutes of Health, NIAMS (R01 AR046849); National Institute on Aging of the National Institutes of Health (R01AG034676); National Center for Advancing Translational Sciences (NCATS)

(UL1 TR000135); Rheumatology Research Foundation (RRF) (Medical Student Research Preceptorship award).

References

- [1] D. H. Solomon, E. W. Karlson, E. B. Rimm et al., "Cardiovascular morbidity and mortality in women diagnosed with rheumatoid arthritis," *Circulation*, vol. 107, no. 9, pp. 1303–1307, 2003.
- [2] L. Lévy, B. Fautrel, T. Barnetche, and T. Schaeffer, "Incidence and risk of fatal myocardial infarction and stroke events in rheumatoid arthritis patients. A systematic review of the literature," *Clinical and Experimental Rheumatology*, vol. 26, no. 4, pp. 673–679, 2008.
- [3] J. A. Aviña-Zubieta, H. K. Choi, M. Sadatsafavi, M. Etminan, J. M. Esdaile, and D. Lacaille, "Risk of cardiovascular mortality in patients with rheumatoid arthritis: a meta-analysis of observational studies," *Arthritis and Rheumatism*, vol. 59, no. 12, pp. 1690–1697, 2008.
- [4] C. Meune, E. Touzé, L. Trinquart, and Y. Allanore, "Trends in cardiovascular mortality in patients with rheumatoid arthritis over 50 years: a systematic review and meta-analysis of cohort studies," *Rheumatology*, vol. 48, no. 10, pp. 1309–1313, 2009.
- [5] D. P. Symmons and S. E. Gabriel, "Epidemiology of CVD in rheumatic disease, with a focus on RA and SLE," *Nature Reviews Rheumatology*, vol. 7, no. 7, pp. 399–408, 2011.
- [6] C. S. Crowson, E. L. Matteson, V. L. Roger, T. M. Therneau, and S. E. Gabriel, "Usefulness of risk scores to estimate the risk of cardiovascular disease in patients with rheumatoid arthritis," *The American Journal of Cardiology*, vol. 110, no. 3, pp. 420–424, 2012.
- [7] A. Gonzalez, H. Maradit Kremers, C. S. Crowson et al., "Do cardiovascular risk factors confer the same risk for cardiovascular outcomes in rheumatoid arthritis patients as in non-rheumatoid arthritis patients?" *Annals of the Rheumatic Diseases*, vol. 67, no. 1, pp. 64–69, 2008.
- [8] B. F. Culeton, M. G. Larson, W. B. Kannel, and D. Levy, "Serum uric acid and risk for cardiovascular disease and death: the

- Framingham heart study," *Annals of Internal Medicine*, vol. 131, no. 1, pp. 7–13, 1999.
- [9] T. M. Palmer, B. G. Nordestgaard, M. Benn et al., "Association of plasma uric acid with ischaemic heart disease and blood pressure: Mendelian randomization analysis of two large cohorts," *British Medical Journal*, vol. 347, article f4262, Article ID f4262, 2013.
- [10] P. C. Grayson, S. Y. Kim, M. Lavalley, and H. K. Choi, "Hyperuricemia and incident hypertension: a systematic review and meta-analysis," *Arthritis Care and Research*, vol. 63, no. 1, pp. 102–110, 2011.
- [11] H. Huang, B. Huang, Y. Li et al., "Uric acid and risk of heart failure: a systematic review and meta-analysis," *European Journal of Heart Failure*, vol. 16, no. 1, pp. 15–24, 2014.
- [12] S. Y. Kim, J. P. Guevara, K. M. Kim, H. K. Choi, D. F. Heitjan, and D. A. Albert, "Hyperuricemia and coronary heart disease: a systematic review and meta-analysis," *Arthritis Care and Research*, vol. 62, no. 2, pp. 170–180, 2010.
- [13] S. Y. Kim, J. P. Guevara, K. M. Kim, H. K. Choi, D. F. Heitjan, and D. A. Albert, "Hyperuricemia and risk of stroke: a systematic review and meta-analysis," *Arthritis and Rheumatism*, vol. 61, no. 7, pp. 885–892, 2009.
- [14] M. Kanbay, M. Segal, B. Afsar, D. Kang, B. Rodriguez-Iturbe, and R. J. Johnson, "The role of uric acid in the pathogenesis of human cardiovascular disease," *Heart*, vol. 99, no. 11, pp. 759–766, 2013.
- [15] V. F. Panoulas, K. M. Douglas, H. J. Milionis et al., "Serum uric acid is independently associated with hypertension in patients with rheumatoid arthritis," *Journal of Human Hypertension*, vol. 22, no. 3, pp. 177–182, 2008.
- [16] V. F. Panoulas, H. J. Milionis, K. M. Douglas et al., "Association of serum uric acid with cardiovascular disease in rheumatoid arthritis," *Rheumatology*, vol. 46, no. 9, pp. 1466–1470, 2007.
- [17] S. P. Juraschek, L. C. Kovell, E. R. Miller, and A. C. Gelber, "Dose-Response Association of Uncontrolled Blood Pressure and Cardiovascular Disease Risk Factors with Hyperuricemia and Gout," *PLoS ONE*, vol. 8, no. 2, Article ID e56546, 2013.
- [18] E. Myasoedova, C. S. Crowson, H. M. Kremers, T. M. Therneau, and S. E. Gabriel, "Is the incidence of rheumatoid arthritis rising? Results from Olmsted County, Minnesota, 1955–2007," *Arthritis and Rheumatism*, vol. 62, no. 6, pp. 1576–1582, 2010.
- [19] F. C. Arnett, S. M. Edworthy, D. A. Bloch et al., "The American Rheumatism Association 1987 revised criteria for the classification of rheumatoid arthritis," *Arthritis and Rheumatism*, vol. 31, no. 3, pp. 315–324, 1988.
- [20] A. K. Bacani, S. E. Gabriel, C. S. Crowson, J. A. Heit, and E. L. Matteson, "Noncardiac vascular disease in rheumatoid arthritis: increase in venous thromboembolic events?" *Arthritis & Rheumatism*, vol. 64, no. 1, pp. 53–61, 2012.
- [21] T. A. Gooley, W. Leisenring, J. Crowley, and B. E. Storer, "Estimation of failure probabilities in the presence of competing risks: new representations of old estimators," *Statistics in Medicine*, vol. 18, no. 6, pp. 695–706, 1999.
- [22] R. J. Gray, "A class of K -sample tests for comparing the cumulative incidence of a competing risk," *Annals of Statistics*, vol. 16, no. 3, pp. 1141–1154, 1988.
- [23] Y. Zhu, B. J. Pandya, and H. K. Choi, "Prevalence of gout and hyperuricemia in the US general population: The National Health and Nutrition Examination Survey 2007–2008," *Arthritis and Rheumatism*, vol. 63, no. 10, pp. 3136–3141, 2011.
- [24] A. Jebakumar, P. D. Udayakumar, C. S. Crowson, and E. L. Matteson, "Occurrence of gout in rheumatoid arthritis: it does happen! A population-based study," *International Journal of Clinical Rheumatology*, vol. 8, no. 4, pp. 433–437, 2013.
- [25] K. H. Yu, S. F. Luo, W. P. Tsai, and Y. Y. Huang, "Intermittent elevation of serum urate and 24-hour urinary uric acid excretion," *Rheumatology*, vol. 43, no. 12, pp. 1541–1545, 2004.
- [26] M. J. Bos, P. J. Koudstaal, A. Hofman, J. C. M. Witteman, and M. M. B. Breteler, "Uric acid is a risk factor for myocardial infarction and stroke: The Rotterdam Study," *Stroke*, vol. 37, no. 6, pp. 1503–1507, 2006.
- [27] I. Holme, A. H. Aastveit, N. Hammar, I. Jungner, and G. Walldius, "Uric acid and risk of myocardial infarction, stroke and congestive heart failure in 417 734 men and women in the Apolipoprotein MOrtality RISk study (AMORIS)," *Journal of Internal Medicine*, vol. 266, no. 6, pp. 558–570, 2009.
- [28] A. Shankar, B. E. Klein, F. J. Nieto, and R. Klein, "Association between serum uric acid level and peripheral arterial disease," *Atherosclerosis*, vol. 196, no. 2, pp. 749–755, 2008.
- [29] J. F. Baker, H. R. Schumacher, and E. Krishnan, "Serum uric acid level and risk for peripheral arterial disease: analysis of data from the multiple risk factor intervention trial," *Angiology*, vol. 58, no. 4, pp. 450–457, 2007.
- [30] U. M. Khosla, S. Zharikov, J. L. Finch et al., "Hyperuricemia induces endothelial dysfunction," *Kidney International*, vol. 67, no. 5, pp. 1739–1742, 2005.
- [31] D. H. Kang, J. E. Park, E. S. Yoo, L. K. Lee, and R. J. Johnson, "Uric acid induced the expression of C-reactive protein (CRP) in vascular smooth muscle cells (VSMC) via MAP kinase-dependent and angiotensin II-mediated pathway," *Atherosclerosis Supplements*, vol. 4, no. 2, pp. 332–333, 2003.
- [32] P. M. Ridker, M. Cushman, M. J. Stampfer, R. P. Tracy, and C. H. Hennekens, "Plasma concentration of C-reactive protein and risk of developing peripheral vascular disease," *Circulation*, vol. 97, no. 5, pp. 425–428, 1998.
- [33] G. Zhao, L. Huang, M. Song, and Y. Song, "Baseline serum uric acid level as a predictor of cardiovascular disease related mortality and all-cause mortality: a meta-analysis of prospective studies," *Atherosclerosis*, vol. 231, no. 1, pp. 61–68, 2013.
- [34] P. Hu, T. E. Seeman, T. B. Harris, and D. B. Reuben, "Is serum uric acid level associated with all-cause mortality in high-functioning older persons: MacArthur studies of successful aging?" *Journal of the American Geriatrics Society*, vol. 49, no. 12, pp. 1679–1684, 2001.
- [35] J. L. St Sauver, B. R. Grossardt, C. L. Leibson, B. P. Yawn, L. J. Melton III, and W. A. Rocca, "Generalizability of epidemiological findings and public health decisions: an illustration from the Rochester Epidemiology Project," *Mayo Clinic Proceedings*, vol. 87, no. 2, pp. 151–160, 2012.