

## Invited Mini Review

## Role of estrogen and RAS signaling in repeated implantation failure

Kwonho Hong<sup>1</sup> & Youngsok Choi<sup>2,\*</sup><sup>1</sup>Department of Stem Cell and Regenerative Biotechnology, Konkuk University, Seoul 05029, <sup>2</sup>Department of Biomedical Science, CHA University, Seongnam 13488, Korea

In humans, hormonal regulation is crucial for the preparation of uterine environment leading to either successful implantation or menstrual cycle. Estrogen is a pivotal female steroid hormone that regulates the uterine dynamics along with progesterone in the estrous and menstrual cycles in humans. Estrogen signals act via nuclear estrogen receptor or membrane-bound receptor. The membrane-bound estrogen receptor plays a crucial role in the rapid response of estrogen in the uterine epithelium. Recently, RASD1 has received attention as a novel signal transducer of estrogen in various systems including female reproductive organs. In this review, we discuss the regulation of estrogen and RASD1 signaling in the uterus and also provide insights into RAS as a novel signaling molecule in repeated implantation failure. [BMB Reports 2018; 51(5): 225-229]

## INTRODUCTION

Uterus is an important reproductive organ in mammals, and is responsive to female hormones. The organ comprises three layers: endometrium, myometrium, and perimetrium. Endometrium is the innermost layer of the uterus, and contains luminal and glandular epithelium along with stromal region. The endometrium changes throughout the menstrual cycle in response to ovarian hormones, estrogen and progesterone. Estrogen is one of the crucial female steroid hormones and plays a key role in regulating physiological and cellular functions of various tissues including reproductive organs (1, 2). Estrogen orchestrates the cycle of uterine epithelium with another steroid hormone, progesterone, for successful uterine implantation after puberty. In this review, we will investigate the relationship between estrogen and the recently reported

\*Corresponding author. Tel: +82-31-881-7149; Fax: +82-31-881-7249; E-mail: youngsokchoi@cha.ac.kr.

<https://doi.org/10.5483/BMBRep.2018.51.5.045>

Received 23 February 2018

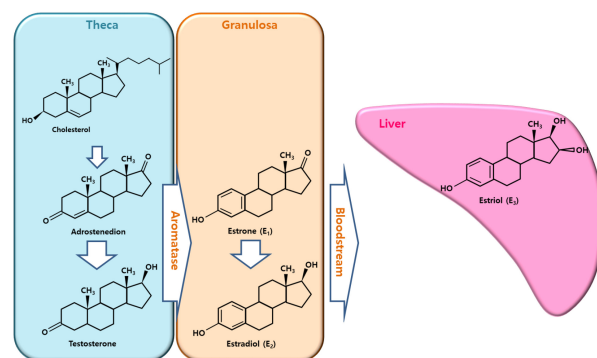
**Keywords:** Estrogen, Estrogen receptor, RAS signaling, Repeated implantation failure, Uterus

RAS signal as well as the implications for patient with repeated implantation failure.

## ESTROGEN SIGNALING

## Estrogen production from the ovary during the estrous or menstrual cycle

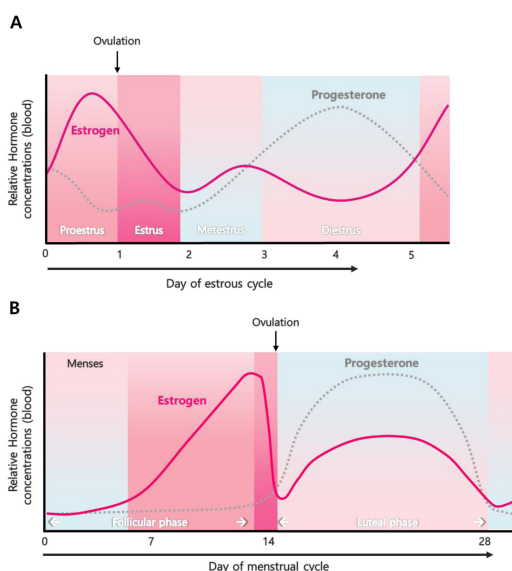
Estrogen exists in three forms such as estrone, estradiol, and estriol (1, 2). Estrogen is produced in various tissues including the ovary, placenta, fat, and the liver in females (3, 4). It is the primary source of estrogen production. Two different somatic cells known as theca and granulosa cells surround the oocyte in the ovarian follicles (3-5). Estrogen biosynthesis depends on P450 aromatase enzyme activity, which catalyzes the hydroxylation of estrogen precursors, androstenedione or testosterone (Fig. 1). Androstenedione and testosterone are produced in theca cells from cholesterol via steroidogenesis, and diffuse into granulosa cells, which contain aromatases leading to estrogen synthesis during reproductive life. Estrogen production in the ovary changes periodically along with the estrous or menstrual cycle under the control of a gonado-



**Fig. 1.** Estrogen production. Estradiol is synthesized in the ovary based on the two-cell theory. In theca cells, androstenedione or testosterone is generated from cholesterol. In granulosa cells, estrone or estradiol is produced from androstenedione or testosterone by aromatase, which is a cell-specific enzyme. Estradiol in the blood is converted into estriol in the liver or placenta (modified from Hiller (1, 3)).

tropin, follicle-stimulating hormone, which is synthesized and secreted by the anterior pituitary (6).

The estrogen produced in the ovary is secreted into bloodstream, bound to carrier proteins such as sex-hormone-binding globulin or albumin, and then delivered to target tissues (1, 7). Uterus is one of the main targets of estrogen. Uterus is an important secondary sex organ of the reproductive system responsive to female hormones in most mammals. The uterus consists of three layers, endometrium, myometrium and perimetrium. The growth and degeneration of uterine epithelium are dynamically and cyclically altered by estrogen and another steroid hormone, progesterone in rodents and humans (8). The dynamic regulation of uterine epithelium is precisely regulated by the endocrine system for preparation of uterine receptivity for successful implantation of embryo during early pregnancy (8). The estrous cycle in mice is divided into 4 stages, proestrus, estrus, metestrus, and diestrus, with four to five days (9). In rodents, the estrogen levels peak at proestrus stage followed by ovulation (10). The cycle in humans is called menstrual cycle which is approximately 28 days long. The uterine cycle during the menstrual cycle is divided into proliferative and secretory phases (11). Estrogen level is gradually increased in the follicular phase and peaks before the ovulation leading to thickening of the uterine endometrium (11). Human and mouse cycles vary, although the estrogen concentrations peak before the ovulation (Fig. 2).



**Fig. 2.** Estrogen level during estrous cycle and menstrual cycle. (A) The estrous cycle is divided into four stages in mice: proestrus, estrus, metestrus, and diestrus. (B) The menstrual cycle is divided into two phases in humans: follicular phase and luteal phase (modified from Wang and Dey (11)).

### Estrogen receptor signaling in the uterus

Estrogen levels are dynamically altered according to the cycle, and are closely related to changes in the uterine endometrium. Cunha *et al.* reported that estrogen induces cell proliferation and maintains secretory function in uterine epithelium (12). The role of estrogen in the uterine changes has been investigated in ovariectomized mice and knockout animal models. Estrogen induced epithelial cell proliferation in ovariectomized mice within 24 h of administration (13). Estrogen binds via two types of receptor: estrogen receptor alpha ( $ER\alpha$ ) and estrogen receptor beta ( $ER\beta$ ) (2). Estrogen receptors occur widely throughout the body including the uterus (14, 15) suggesting that ER signaling is important in fertility. However, the biological functions of the receptor are different.  $ER\alpha$  knockout mice are infertile (16), whereas  $ER\beta$ -deficient mice are fertile (17).  $ER\alpha$  plays a crucial role in uterine development and function. The uterus in  $ER\alpha$  knockout mice is hypoplastic (16).  $ER\alpha$  signals and induces cellular proliferation and differentiation of uterine epithelium in response to estrogen (18) suggesting that estrogen regulates uterine physiology via its own receptor. Estrogen receptor mediates estrogen signaling via two signal transduction pathways (19), one of which is mediated via nuclear estrogen receptor. In the absence of estrogen, the receptor is present in cytoplasm. However, estrogen diffuses across the phospholipid membrane and binds with the cytoplasmic receptor. Estrogen binding to the receptor triggers translocation of ER into the nucleus and acts as a transcriptional factor via subsequent binding to specific DNA sequences found in the regulatory regions of estrogen-responsive target genes, called the estrogen response elements (ERE). This  $ER\alpha$  nuclear receptor-mediated signaling is known as genomic actions.

A majority of  $ER\alpha$  occurs in the cytoplasm or the nucleus, whereas a small portion of the receptor is located in the membrane (19). Compared with the nuclear receptor, the membrane-bound  $ER\alpha$  signaling pathway triggers rapid transcription of estrogen to control the gene expression of target tissues resulting in rapid changes in the cellular events of hormone signal. The membrane-bound  $ER\alpha$  is known to be associated with other complexes such as G proteins (20), tyrosine kinases (21, 22), caveolin-1/2 (23), p130Cas (24), and striatin (25) suggesting that  $ER\alpha$ -mediated signaling is complex resulting in an integrated cellular response with target cell specificity. These non-genomic signals are transmitted to the nucleus via various intracellular signaling pathways such as the mitogen-activated protein kinase (MAPK/ERK) and phosphoinositide 3-kinase (PI3K/AKT) pathways (19, 26).

### RAS SIGNALING

#### RAS superfamily

RAS proteins are encoded by Ras sarcoma (Ras) oncogenes and belong to a class of small GDP/GTP-binding guanine triphosphatases (GTPase) (27). The RAS superfamily consists of

over 150 members including three major RAS isoforms: HRAS, NRAS, and KRAS (27), which play a key role in cellular processes such as proliferation, migration, adhesion, and differentiation (28). Abnormal signaling of RAS occurs in human diseases including cancer (29). RAS proteins mediate intracellular signal transduction of cellular responses by switching between active GTP-binding and inactive GDP-binding forms. The level of active and inactive RAS is regulated by guanine nucleotide exchange-factors (GEFs) and GTPase-activating proteins (GAPs) via interaction with other molecules and membrane-bound receptors (30, 31). GEFs catalyze the release of GDP and promote GTP binding to activate RAS, whereas GAPs stimulate intrinsic GTPase activity of RAS leading to GTP hydrolysis and inactivation of RAS (32). The relationship between RAS activation and ER-mediated signaling was investigated (33). In 2004, first, the p85-associated PI3-kinase, which is associated with ER, is activated via phosphorylation of a protein kinase C (PKC). The PKC induces phosphorylation and recruitment of RAS to the ER/Src/PI3K complex followed by RAS stimulation resulting in activation of RAF via the Src/Shc-SOS pathway in MCF-7 cells (33). The activation of RAS signals occurs via a cascade of mitogen-activated protein kinase (MAPK)/extracellular signal-regulated kinase (ERK) pathways. The activated RAS leads to activation of a serine/threonine-protein kinase, RAF (34), which in turn activates a serine/tyrosine/threonine kinase,

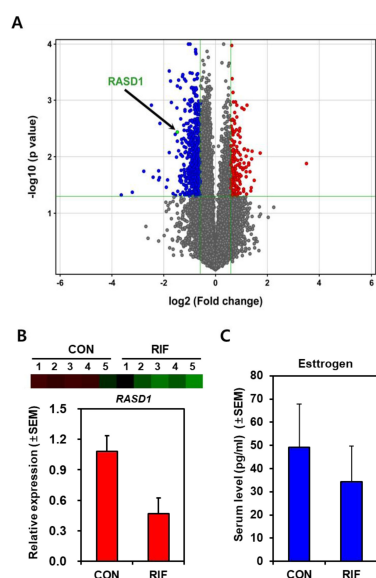
MAPK/ERK kinase (MEK) (35) resulting in phosphorylation of MAPK/ERK.

### RASD1 and RASD2

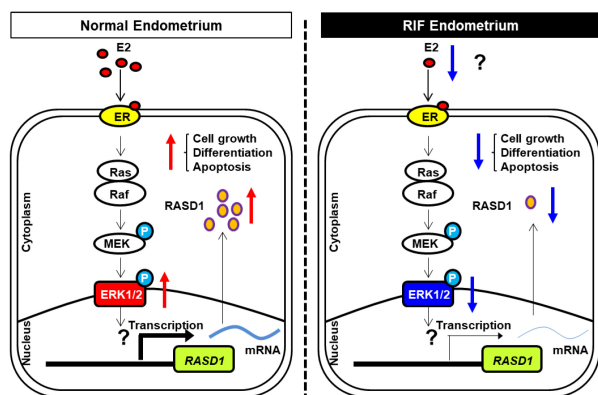
The RASD subfamily comprises two members, RASD1 and RASD2 (36, 37). RASD1 is a dexamethasone-induced Ras-related protein 1 (called dexras1) (38), whereas RASD2 is a Ras homolog enriched in striatum (called Rhes) (36). RASD1 was originally found in a mouse pituitary-derived cell line, AtT-20 (38). RASD2 was discovered in the striatum of rat brain (36). RASD1 and RASD2 contain longer C-termini compared with other members, although their C-termini vary (36). RASD1 contains four highly conserved GTP-binding and hydrolysis pockets, an effector loop, and a C-terminal CAAX box site for isoprenylation (39). RASD1 plays crucial roles in cellular signal transduction, growth, and proliferation via binding to receptor or interacting partners (40). RASD1 forms a heterodimer with G proteins,  $G_{1\alpha}$  and  $G_{\beta\gamma}$ . RASD1 suppresses cAMP-PKR-CREB pathway via interaction with  $G_{1\alpha}$  (41), and inhibits dopamine receptor-mediated sensitization through  $G_{\beta\gamma}$  interaction (42). In addition, RASD1 increases nitric oxide (NO) signal by interacting with neuronal nitric oxide synthase (nNOS) and CAPON in nervous system (43, 44). Cell growth is suppressed by RASD1 overexpression in several cells including NIH-3T3 fibroblast cells, MCF-7 breast cancer cell line and A549 lung adenocarcinoma cell line (45).

### Regulation of RASD1 by estrogen

The expression of RASD1 was regulated by dexamethasone treatment in AtT-20 cells (38). However, recent studies suggest that RASD1 is regulated by estrogen in several tissues including pituitary, uterus, and oviduct (37, 38, 46-48). In fact, RASD1 mRNA was exclusively detected in the brain and female reproductive organs (37, 46). Estrogen is known to regulate cell cycle in several organs including the uterus, mammary gland and pituitary (49). Kim *et al.* reported that the expression of RASD1 was dynamically regulated in the uterus during the estrous cycle (37). RASD1 was localized in the uterine epithelium at the proestrus stage, which is consistent with estrogen peaks in the blood (Fig. 2). Administration of estrogen significantly induced RASD1 expression in the uterine epithelium of ovariectomized mice and 3-week-old prepubertal mice (37). In addition, Jeong *et al.* reported that RASD1 expression was rapidly regulated by estrogen in regenerating oviduct after molting in hens (46). Wang *et al.* showed that RASD1 is essential for estrogen-responsive immediate early gene expression in rat pituitary cells (48). In fact, the uterine epithelium is rapidly and dynamically altered by estradiol and progesterone during the estrous cycle for preparation of pregnancy. Therefore, RASD1 might play a role in rapid signal transduction during uterine dynamics in response to estrogen.



**Fig. 3.** RASD1 expression in the uterine endometrium of RIF patients. (A) Gene profile analysis of RIF and the relative RASD1 location in volcano plot. (B) Semi-quantitative RT-PCR analysis was performed using total RNA extracted from uterine endometrial tissues of RIF patients ( $n = 5$ ) and control women ( $n = 5$ ). (C) Relative serum levels (pg/ml) of estrogen in RIF patients ( $n = 15$ ) and control women ( $n = 7$ ). Data modified from Choi (50).



**Fig. 4.** Estrogen signaling pathway regulates RASD1 expression in uterine epithelium of control and RIF patients. In normal uterine endometrium, estrogen signals are transduced via the non-genomic action of estrogen receptor, which mediates the RAS/MEK/ERK pathway to regulate RASD1 expression for successful implantation. In RIF endometrium, decreased estrogen expression result in a reduction in the levels of RASD1 factors.

### RASD1 expression in the uterus of patients with repeated implantation failure

Interactions between blastocyst and uterus are a prerequisite for successful embryo implantation and the role of uterine endometrium plays a key role. Kim *et al.* reported a recent study suggesting that patients with repeated implantation failure (RIF) show aberrant gene expression in the endometrium (50) following dysregulation of several signaling pathways as well as genes. Interestingly, RASD1 expression was significantly reduced in RIF (Fig. 3) (50). In fact, the level of estrogen of RIF patients was lower than in control group (Fig. 3) suggesting that low estrogen level during menstrual cycle was related to failure of implantation.

In normal conditions, RASD1 acts a signaling factor in uterine modulation leading to successful implantation, such as cellular growth and differentiation. By contrast, RIF patients show reduced estrogen levels leading to diminished RASD1 levels in the uterine endometrium, resulting in abnormal implantation via abnormal uterine regulation (Fig. 4).

### CONCLUSION

Uterus is the most dynamic organ, undergoing organ-specific proliferation and morphological changes, which are regulated by ovarian hormones including estrogen. The uterine epithelium is rapidly changed during the reproductive cycle. The signaling pathway requires a second messenger, such as RASD1, associated with estrogen receptor to orchestrate the uterine dynamics. The relationship between RASD1 and estrogen receptor-mediated signal transduction warrants further studies for a better understanding and insight into RIF clinically.

### ACKNOWLEDGEMENTS

This was supported by a grant from the Ministry of Science, ICT & Future Planning (2015M2A2A7A03044831 & 2017M3A9C6061361).

### CONFLICTS OF INTEREST

The authors have no conflicting interests.

### REFERENCES

1. Gruber CJ, Tschugguel W, Schneeberger C and Huber JC (2002) Production and actions of estrogens. *N Engl J Med* 346, 340-352
2. Yasar P, Ayaz G, User SD, Gupur G and Muyan M (2017) Molecular mechanism of estrogen-estrogen receptor signaling. *Reprod Med Biol* 16, 4-20
3. Hillier SG, Whitelaw PF and Smyth CD (1994) Follicular oestrogen synthesis: the 'two-cell, two-gonadotrophin' model revisited. *Mol Cell Endocrinol* 100, 51-54
4. Lieberman S (1996) Are the differences between estradiol and other estrogens, naturally occurring or synthetic, merely semantical? *J Clin Endocrinol Metab* 81, 850-851
5. Nelson LR and Bulun SE (2001) Estrogen production and action. *J Am Acad Dermatol* 45, S116-124
6. Pierce JG and Parsons TF (1981) Glycoprotein hormones: structure and function. *Annu Rev Biochem* 50, 465-495
7. Anderson DC (1974) Sex-hormone-binding globulin. *Clin Endocrinol (Oxf)* 3, 69-96
8. Groothuis PG, Dassen HH, Romano A and Punyadeera C (2007) Estrogen and the endometrium: lessons learned from gene expression profiling in rodents and human. *Hum Reprod Update* 13, 405-417
9. Champlin AK, Dorr DL and Gates AH (1973) Determining the stage of the estrous cycle in the mouse by the appearance of the vagina. *Biol Reprod* 8, 491-494
10. Bingel AS (1974) Timing of LH release and ovulation in 4- and 5-day cyclic mice. *J Reprod Fertil* 40, 315-320
11. Wang H and Dey SK (2006) Roadmap to embryo implantation: clues from mouse models. *Nat Rev Genet* 7, 185-199
12. Cunha GR and Lung B (1979) The importance of stroma in morphogenesis and functional activity of urogenital epithelium. *In Vitro* 15, 50-71
13. Agarwal AK, Durani S and Setty BS (1982) Dose dependent modulation of receptor dynamics and uterine growth in immature rat by estradiol: importance of an additional nuclear binding at 24 hr for long-term (72 hr) uterine growth. *Endokrinologie* 79, 235-241
14. Bondesson M, Hao R, Lin CY, Williams C and Gustafsson JA (2015) Estrogen receptor signaling during vertebrate development. *Biochim Biophys Acta* 1849, 142-151
15. Deroo BJ and Korach KS (2006) Estrogen receptors and human disease. *J Clin Invest* 116, 561-570
16. Lubahn DB, Moyer JS, Golding TS, Couse JF, Korach KS and Smithies O (1993) Alteration of reproductive function but not prenatal sexual development after insertional disruption of the mouse estrogen receptor gene. *Proc Natl*

- Acad Sci U S A 90, 11162-11166
17. Weihua Z, Saji S, Makinen S et al (2000) Estrogen receptor (ER) beta, a modulator of ERalpha in the uterus. *Proc Natl Acad Sci U S A* 97, 5936-5941
  18. Couse JF and Korach KS (1999) Estrogen receptor null mice: what have we learned and where will they lead us? *Endocr Rev* 20, 358-417
  19. Cheskis BJ, Greger JG, Nagpal S and Freedman LP (2007) Signaling by estrogens. *J Cell Physiol* 213, 610-617
  20. Kumar P, Wu Q, Chambliss KL et al (2007) Direct interactions with G alpha i and G betagamma mediate nongenomic signaling by estrogen receptor alpha. *Mol Endocrinol* 21, 1370-1380
  21. Song RX, Barnes CJ, Zhang Z, Bao Y, Kumar R and Santen RJ (2004) The role of Shc and insulin-like growth factor 1 receptor in mediating the translocation of estrogen receptor alpha to the plasma membrane. *Proc Natl Acad Sci U S A* 101, 2076-2081
  22. Song RX, McPherson RA, Adam L et al (2002) Linkage of rapid estrogen action to MAPK activation by ERalpha-Shc association and Shc pathway activation. *Mol Endocrinol* 16, 116-127
  23. Razandi M, Oh P, Pedram A, Schnitzer J and Levin ER (2002) ERs associate with and regulate the production of caveolin: implications for signaling and cellular actions. *Mol Endocrinol* 16, 100-115
  24. Cabodi S, Moro L, Baj G et al (2004) p130Cas interacts with estrogen receptor alpha and modulates non-genomic estrogen signaling in breast cancer cells. *J Cell Sci* 117, 1603-1611
  25. Lu Q, Pallas DC, Surks HK, Baur WE, Mendelsohn ME and Karas RH (2004) Striatin assembles a membrane signaling complex necessary for rapid, nongenomic activation of endothelial NO synthase by estrogen receptor alpha. *Proc Natl Acad Sci U S A* 101, 17126-17131
  26. Kato S, Endoh H, Masuhiro Y et al (1995) Activation of the estrogen receptor through phosphorylation by mitogen-activated protein kinase. *Science* 270, 1491-1494
  27. Wennerberg K, Rossman KL and Der CJ (2005) The Ras superfamily at a glance. *J Cell Sci* 118, 843-846
  28. Malumbres M and Barbacid M (2003) RAS oncogenes: the first 30 years. *Nat Rev Cancer* 3, 459-465
  29. Simanshu DK, Nissley DV and McCormick F (2017) RAS Proteins and Their Regulators in Human Disease. *Cell* 170, 17-33
  30. Bos JL, Rehmann H and Wittinghofer A (2007) GEFs and GAPs: critical elements in the control of small G proteins. *Cell* 129, 865-877
  31. Cherfils J and Zeghouf M (2013) Regulation of small GTPases by GEFs, GAPs, and GDIs. *Physiol Rev* 93, 269-309
  32. McCormick F (1998) Going for the GAP. *Curr Biol* 8, R673-674
  33. Castoria G, Migliaccio A, Di Domenico M et al (2004) Role of atypical protein kinase C in estradiol-triggered G1/S progression of MCF-7 cells. *Mol Cell Biol* 24, 7643-7653
  34. Avruch J, Khokhlatchev A, Kyriakis JM et al (2001) Ras activation of the Raf kinase: tyrosine kinase recruitment of the MAP kinase cascade. *Recent Prog Horm Res* 56, 127-155
  35. Falchook GS, Lewis KD, Infante JR et al (2012) Activity of the oral MEK inhibitor trametinib in patients with advanced melanoma: a phase 1 dose-escalation trial. *Lancet Oncol* 13, 782-789
  36. Falk JD, Vargiu P, Foye PE et al (1999) Rhes: A striatal-specific Ras homolog related to Dexas1. *J Neurosci Res* 57, 782-788
  37. Kim HR, Cho KS, Kim E et al (2017) Rapid expression of RASD1 is regulated by estrogen receptor-dependent intracellular signaling pathway in the mouse uterus. *Mol Cell Endocrinol* 446, 32-39
  38. Kempainen RJ and Behrend EN (1998) Dexamethasone rapidly induces a novel ras superfamily member-related gene in AtT-20 cells. *J Biol Chem* 273, 3129-3131
  39. Graham TE, Key TA, Kilpatrick K and Dorin RI (2001) Dexas1/AGS-1, a steroid hormone-induced guanosine triphosphate-binding protein, inhibits 3',5'-cyclic adenosine monophosphate-stimulated secretion in AtT-20 corticotroph cells. *Endocrinology* 142, 2631-2640
  40. McCormick F (1995) Ras-related proteins in signal transduction and growth control. *Mol Reprod Dev* 42, 500-506
  41. Graham TE, Qiao Z and Dorin RI (2004) Dexas1 inhibits adenylyl cyclase. *Biochem Biophys Res Commun* 316, 307-312
  42. Nguyen CH and Watts VJ (2005) Dexas1 blocks receptor-mediated heterologous sensitization of adenylyl cyclase 1. *Biochem Biophys Res Commun* 332, 913-920
  43. Fang M, Jaffrey SR, Sawa A, Ye K, Luo X and Snyder SH (2000) Dexas1: a G protein specifically coupled to neuronal nitric oxide synthase via CAPON. *Neuron* 28, 183-193
  44. Shen A, Chen M, Niu S et al (2008) Changes in mRNA for CAPON and Dexas1 in adult rat following sciatic nerve transection. *J Chem Neuroanat* 35, 85-93
  45. Vaidyanathan G, Cismowski MJ, Wang G, Vincent TS, Brown KD and Lanier SM (2004) The Ras-related protein AGS1/RASD1 suppresses cell growth. *Oncogene* 23, 5858-5863
  46. Jeong W, Bae H, Lim W, Bazer FW and Song G (2017) RAS-related protein 1: an estrogen-responsive gene involved in development and molting-mediated regeneration of the female reproductive tract in chickens. *Animal*, 1-8
  47. Lee Y, Kim KH, Yoon H et al (2016) RASD1 knockdown results in failure of oocyte maturation. *Cell Physiol Biochem* 40, 1289-1302
  48. Wang L, Mitsui T, Ishida M, Izawa M and Arita J (2017) Rasd1 is an estrogen-responsive immediate early gene and modulates expression of late genes in rat anterior pituitary cells. *Endocr J* 64, 1063-1071
  49. Foster JS, Henley DC, Ahamed S and Wimalasena J (2001) Estrogens and cell-cycle regulation in breast cancer. *Trends Endocrinol Metab* 12, 320-327
  50. Choi Y, Kim HR, Lim EJ et al (2016) Integrative analyses of uterine Transcriptome and microRNAome reveal compromised LIF-STAT3 signaling and progesterone response in the endometrium of patients with recurrent/repeated implantation failure (RIF). *PLoS One* 11, e0157696