



Immunomodulatory Effects of Bone Marrow-Derived Mesenchymal Stem Cells on Pro-Inflammatory Cytokine-Stimulated Human Corneal Epithelial Cells

Li Wen^{1,9}, Meidong Zhu^{1,2,3,9*}, Michele C. Madigan^{1,4}, Jingjing You¹, Nicholas J. C. King⁵, Francis A. Billson^{1,3,6}, Kathryn McClellan^{1,2,3}, Gerard Sutton^{1,2,3,7,8}, Con Petsoglou^{1,2,3}

1 Save Sight Institute & Discipline of Clinical Ophthalmology, University of Sydney, Sydney, New South Wales, Australia, **2** Lions New South Wales Eye Bank, NSW Organ and Tissue Donation Service, Sydney, New South Wales, Australia, **3** Sydney Eye Hospital, Sydney, New South Wales, Australia, **4** School of Optometry & Vision Science, University of New South Wales, Kensington, New South Wales, Australia, **5** Discipline of Pathology, School of Medical Sciences and Bosch Institute, Sydney Medical School, University of Sydney, Camperdown, New South Wales, Australia, **6** Sight for Life Foundation, Sydney, New South Wales, Australia, **7** Vision Eye Institute, Chatswood, New South Wales, Australia, **8** Auckland University, Auckland, New Zealand

Abstract

Purpose: To investigate the modulatory effect of rat bone marrow mesenchymal stem cells (MSC) on human corneal epithelial cells (HCE-T) stimulated with pro-inflammatory cytokines interferon gamma (IFN- γ) and tumor necrosis factor alpha (TNF- α) in an *in vitro* co-cultured model.

Methods: HCE-T alone and co-cultured with MSC were stimulated with IFN- γ /TNF for 24 and 48 hours or left untreated. The expression of intracellular adhesion molecule (ICAM)-1, human leukocyte antigen ABC, DR and G (HLA-ABC, HLA-DR, HLA-G) were investigated by flow cytometry. Subcellular localization of nuclear factor-kappa B (NF- κ B) and expression of indoleamine 2,3-dioxygenase (IDO) were assessed by immunofluorescence staining and western blot. The concentration of transforming growth factor beta 1 (TGF- β 1) in the conditioned media from different cultures was evaluated by enzyme-linked immunosorbent assay. NF- κ B and TGF- β 1 signaling pathway blocking experiments were performed to analyze associations between the expression of cell surface molecules and the NF- κ B transcription pathway, and the expression of IDO and TGF- β 1 signaling pathway.

Results: IFN- γ /TNF treatment significantly up-regulated expression of ICAM-1, HLA-ABC, and induced *de novo* expression of HLA-DR and IDO on HCE-T cultured alone, while HLA-G expression remained unaffected. Up-regulation was significantly inhibited by co-culture with MSC. Increased TGF- β 1 secretion was detected in 48 h IFN- γ /TNF-stimulated MSC monocultures and HCE-T/MSC co-cultures. MSC attenuated the activation of cytokine-induced NF- κ B and IDO induction. Blockade of NF- κ B transcription pathway by BMS-345541 significantly reduced the up-regulation of ICAM-1, HLA-ABC, HLA-DR and IDO expression, while blockade of TGF- β 1 signaling pathways reversed the modulatory effect of MSC on IDO expression.

Conclusions: MSC reduced the expression of adhesion and immunoregulatory molecules on pro-inflammatory cytokine-stimulated HCE-T via the NF- κ B transcription pathway. MSC attenuated expression of IDO through both NF- κ B transcription and TGF- β 1 signaling pathways. Co-culture of HCEC with MSC therefore provides a useful *in vitro* model to study the anti-inflammatory properties of MSC on corneal epithelium.

Citation: Wen L, Zhu M, Madigan MC, You J, King NJC, et al. (2014) Immunomodulatory Effects of Bone Marrow-Derived Mesenchymal Stem Cells on Pro-Inflammatory Cytokine-Stimulated Human Corneal Epithelial Cells. PLoS ONE 9(7): e101841. doi:10.1371/journal.pone.0101841

Editor: Xing-Ming Shi, Georgia Regents University, United States of America

Received: March 13, 2014; **Accepted:** June 12, 2014; **Published:** July 8, 2014

Copyright: © 2014 Wen et al. This is an open-access article distributed under the terms of the Creative Commons Attribution License, which permits unrestricted use, distribution, and reproduction in any medium, provided the original author and source are credited.

Data Availability: The authors confirm that all data underlying the findings are fully available without restriction. All relevant data are within the paper and its Supporting Information files.

Funding: The study was supported by Sydney Eye Hospital Foundation, Lions NSW Eye Bank, Sydney Foundation for Medical Research, Save Sight Institute Special Stem Cell Research Grant. These funding bodies had no role in the study design, data collection and analysis, decision to publish, or preparation of the manuscript.

Competing Interests: The Vision Eye Institute is an employer of Professor Sutton, however the company does not provide any financial support or has influence on research performed by our group. There is no competing interest due to employment by this company. Professor Francis Billson, AO is an unpaid consultant at the Save Sight Institute, University of Sydney and the Chairman and Director of Sight For Life Foundation, a charitable Foundation whose charitable purpose is to support the activities of Sydney Eye Hospital as a teaching Hospital of the University of Sydney. The Sight For Life Foundation has no competing interest in this study nor financial support or any other involvement in this study. This does not alter the authors' adherence to all PLOS ONE policies on sharing data and materials.

* Email: meidong.zhu@sydney.edu.au

⁹ These authors contributed equally to this work.

Introduction

Corneal epithelium is the outermost layer of the cornea. It maintains the integrity and transparency of the cornea and forms a barrier to protect the cornea from injury and harmful foreign agent invasion. Inflammation is part of the initial reaction of the cornea to chemical, thermal and mechanical injury and is associated with the infiltration of neutrophils, monocytes/macrophages and lymphocytes to the site of damage [1,2], as well as generation of pro-inflammatory cytokines, such as IFN- γ /TNF, IL-1 [3–5]. The release of IFN- γ and TNF activates the NF- κ B pathway, which in turn up-regulates a large number of target genes. These include crucial immune recognition molecules, such as major histocompatibility complex-I (MHC-I) and MHC-II, recognized by CD8⁺ and CD4⁺ T cells, respectively, and intracellular adhesion molecule (ICAM-1, CD54), recognized by the integrin, leukocyte function antigen-1 (LFA-1, CD11a/CD18), expressed on lymphocytes and many members of the myeloid lineage. Increased ICAM-1 and MHC-II expression on injured corneal epithelium further play an important role in the infiltration of activated leukocytes [6,7]. Excessive activation of immune cells can interfere with repair, aggravating injury, eventually leading to permanent corneal damage and visual impairment [8]. However, IFN- γ and TNF also induce secretion of soluble immunomodulatory molecules, such as transforming growth factor- β 1 (TGF- β 1) and interleukin-10 (IL-10), which are anti-inflammatory [9,10], as well as expression of indoleamine 2,3-dioxygenase (IDO), the first enzyme in the tryptophan metabolic pathway [11]. The IDO-mediated depletion of tryptophan and subsequent accumulation of active metabolites is strongly linked to immune suppression and in the eye, prolonged corneal allograft survival [12]. IDO may also protect corneal endothelial cells from UV-induced oxidative stress and damage [13]. Thus, these factors play dual roles in both the generation of inflammatory responses and wound healing.

Bone marrow mesenchymal stem cells (MSC) are adherent bone marrow progenitor cells with a fibroblastic morphology that distinguishes them from hematopoietic progenitor cells [14]. MSC are an attractive candidate for tissue repair and wound healing, because of their easy isolation, capacity for self-renewal, potential for multiple lineage differentiation and anti-inflammatory properties. Systemically injected in animal models of corneal injury, MSC migrate to the injury site and engraft to promote wound healing [15]. Although trans-differentiation of MSC into corneal epithelial cells is considered to play a role in tissue repair [16–18], studies also show that the anti-inflammatory and anti-angiogenic effects of MSC are essential in this process [19–21]. This is supported by evidence of the immunosuppressive and anti-angiogenic profile of *in vitro* soluble factors secreted by MSC cocultured with damaged corneal epithelial cells [22].

To date, the mechanisms involved in the immunomodulatory effects of MSC on corneal wound healing have not been fully elucidated. In the present study, we mimicked the inflammatory environment using a combination of IFN- γ and TNF in cocultures of MSC and corneal epithelial cells. We investigated the modulatory effects of MSC on the expression of a range of immunoglobulin superfamily (IgSF) recognition molecules normally up-regulated in inflammation, in IFN- γ /TNF-stimulated corneal epithelial cells, as well as the expression of anti-inflammatory elements such as IDO and TGF- β 1, induced by these cytokines. In order to dissect the underlying mechanism(s) we further examined the effects of MSC on the activation of the NF- κ B transcription and TGF- β 1-signaling pathways, which are associated with this modulation. Our hypotheses, experimental design and findings are summarized in Figure S1.

Materials and Methods

Animal ethics approval was obtained from the Animal Ethics Committee, University of Sydney (Ethic approval number: K17/12-2007/3/4757). All procedures were conducted in accordance with relevant national and international guidelines.

Cell isolation and culture

1. Mesenchymal stem cell (MSC) isolation and culture. Bone marrows from femurs and tibias of 3–4 weeks old Wistar rats were separated by density gradient centrifugation with Ficoll-Paque PLUS (Sigma-Aldrich, St. Louis, USA). The cells from the interface layer were resuspended with low glucose Dulbecco's Modified Eagles Medium (DMEM, Invitrogen, CA, USA) supplemented with 15% fetal bovine serum (FBS), 50 μ g/ml of penicillin and streptomycin, and 2 mM glutamine (all reagents from Invitrogen). A final concentration of 5×10^6 cells were seeded in 25 cm² tissue culture flasks (NUNC, Thermo Fisher Scientific Inc., MA, USA), and grown at 37°C in a humidified atmosphere of 5% CO₂. Medium was changed two days after seeding, and then twice per week until the cells reached around 80% confluence. The cells were then passaged with 0.25% trypsin/0.1% EDTA (Invitrogen) and grown in MSC Growth medium (M-GM) [DMEM-low glucose supplemented with 10% FBS, 50 μ g/ml penicillin and streptomycin, and 2 mM glutamine (Invitrogen)]. Flow cytometric analysis was used to identify the molecular phenotype of rat-MSCs. Passages 3–5 were used for all experiments.

2. Human corneal epithelial cell culture. A human SV40-adenovirus vector transformed corneal epithelial cell line (HCE-T, Riken Cell Bank, Japan) was used for these experiments [23]. Cells were cultured and maintained in HCE-T Growth Medium (H-GM) [1:1 DMEM/Hams F12 supplemented with 5% FBS, 10 ng/ml human epidermal growth factor (EGF), 5 μ g/ml insulin, 50 μ g/ml penicillin and streptomycin and 2 mM glutamine (all reagents from Invitrogen)], according to the manufacturer's instruction.

3. HCE-T and MSC co-culture. For the co-cultures system, HCE-T cells were seeded in 6 well plates; MSC cells were seeded on to permeable membrane inserts (0.45 μ m pore size, 24.5 mm diameter, Transwell, Corning Incorporated, NY, USA) and grown in M-GM with FBS reduced to 5%. After 3 h, Transwells with MSC cells were placed in the 6 well plates, above the HCE-T cells.

Treatment paradigms

The following experiments were conducted using the established cell culture models.

1. Cytokine treatment. This experiment was to establish pro-inflammatory cytokine stimulation models using combined IFN- γ and TNF recombinant proteins (Table 1).

After 3 days in culture, fresh media were added into monocultured HCE-T and co-cultured HCE-T/MSC cells (with EGF and insulin were omitted from H-GM). Immediately, 100 U/mL of recombinant human (rH) IFN- γ /TNF and recombinant rat (rR) IFN- γ /TNF were added to HCE-T and MSC cells respectively and incubated for 24 and 48 h (detailed in Table1).

2. NF- κ B pathway examination. Monocultured and co-cultured HCE-T cells were prepared as described above. After 3 days in culture, the cells were changed to fresh growth medium and treated with DMSO as vehicle and BMS-345541 a NF- κ B pathway inhibitor, (5 μ M, Sigma-Aldrich) for 1 h incubation, followed by IFN- γ /TNF treatments for 24 and 48 hours (Table 2, three replicates were conducted). The HCE-T cells were harvested and subject to flow cytometry and western blot analysis.

Table 1. Cytokine Treatment Groups.

Group 1	HCE-T only, untreated control
Group 2	HCE-T only, 24 h [100 U/ml rh IFN- γ +100 U/ml rh TNF]
Group 3	HCE-T/MSC, 24 h [HCE-T 100 U/ml rH IFN- γ +100 U/ml rH TNF] [MSC 100 U/ml rR IFN- γ + rR TNF 100 U/ml]
Group 4	As for Group 2, 48 h cytokines stimulation
Group 5	As for Group 3, 48 h cytokines stimulation

rH - recombinant human; rR - recombinant rat.
rH TNF- α (Sigma-Aldrich), rH IFN- γ (Sigma-Aldrich).
rR TNF- α (BioLegend, San Diego USA), rR IFN- γ (BioLegend).
doi:10.1371/journal.pone.0101841.t001

3. Assessment of TGF- β 1 pathway and its relationship with IDO production. HCE-T and MSC monocultures and HCE-T/MSC co-cultures were established as described above. The cells were treated as described in Table 3 (Groups 1 to 8, $n = 3$ repeat experiments). Enzyme-linked immunosorbent assay (ELISA) was used to examine for secreted TGF- β 1 in all groups including untreated controls and cytokine-stimulated cells.

To further study the effects of TGF- β 1 in IDO regulation, we examined (a) the effects of exogenous TGF- β 1 (10 ng/ml, BioLegend, CA, USA) on IDO expression in control and cytokine-treated HCE-T cells, and non-cytokine-treated HCE-T/MSC co-cultures (Table 4), and (b) the effects of blocking the TGF- β 1 signaling pathway in HCE-T monocultures and HCE-T/MSC co-cultures (Table 5). SB-431542 (1 μ M, Sigma-Aldrich), a TGF- β receptor I inhibitor was used together with monoclonal mouse anti-TGF- β 1 antibody (1 μ g/ml, R&D System, Minneapolis, USA) in the inhibition experiments (Table 5). IDO expressions were determined by western blotting.

Immunology assays

1. Flow cytometry. To characterize MSCs, cells were harvested by trypsinization, and were resuspended in either PE conjugated anti-CD29, FITC conjugated anti-CD44, anti-CD34, Alexa conjugated anti-CD45, or its isotype controls (Table 6). To detect the expression of CD54 (ICAM-1, MHC-I (HLA-ABC) and MHC-II (HLA-DR) on HCE-Ts, HCE-Ts were subjected to the cytokine treatment (Table 1) and then harvested by trypsinization. HCE-Ts were resuspended in either mouse anti-human Alexa 488 conjugated antibody CD54, MHC-I (HLA-ABC) and MHC-II (HLA-DR); or mouse anti-human HLA-G antibody (Table 6) for 1 h at 4°C. Cells were centrifuged through FBS, and resuspended in culture media for FCM analysis. To detect HLA-G expression, cells were further incubated with donkey anti-mouse Alexa Fluor

488 secondary antibody for 1 h at 4°C. Cells incubated with isotype hamster or mouse IgG were used as controls (Table 6). Flow cytometric analysis was then performed (Canto, Becton Dickinson, Sydney, Australia), and data was analyzed with FlowJo software (Tree Star Inc, California, USA). Sample values were obtained by setting all isotype control values at channel 100. Graphed values were obtained by subtracting geometric means of isotype from experimental antibody labeled values. Statistics were undertaken as described below.

2. Immunofluorescent staining. This method was used to view NF- κ B nuclear translocation. HCE-Ts were seeded on to glass cover slips placed in a 24 well plate (5×10^3 cells/well). MSC were seeded on 6.5 μ m diameter of Transwells (10^4 cells/well). The groups and treatments were as described in Table 1. After the treatments, coverslips were fixed in 100% methanol (Ajax Finechem, Thermo Fisher Scientific Australia Pty Ltd) for 10 min at 4°C. Cells were blocked with 10% normal donkey serum (Zymed, Life Technologies, CA, USA)/PBS prior to incubation with rabbit anti-NF- κ B or negative control rabbit IgG (Table 6) overnight at 4°C. After rinsing with PBS, cells were incubated with donkey anti-rabbit Alexa Fluor 488 (Table 6) and 1 μ g/ml of Hoechst 33342 (Sigma-Aldrich) for 1 h at room temperature (RT). Immunolabelling was visualized and imaged using an inverted Olympus DP71 fluorescence microscope (Olympus, Center Valley, PA, USA).

3. Enzyme-linked immunosorbent assay (ELISA). Conditioned medium from each treatment group listed in Table 3 was collected and centrifuged at 400xg at 4°C for 10 min, and the supernatants were carefully collected and stored at -80°C prior to ELISA analysis. Measurement of the concentration of total TGF- β 1 was performed with a TGF- β 1 DuoSet ELISA kit (R&D Systems, Australia, Bio-Scientific Pty. Ltd.), while measurement of the concentration of active TGF- β 1 was performed with a LEGEND MAX Free Active TGF- β 1 ELISA Kit (BioLegend) according to the manufacturer's instructions. Briefly, standards and 100 μ l of supernatants were loaded into the wells, and the absorbencies were measured at 450 nm using a Tecan Safire² microplate reader and analyzed by Magellan software (Tecan, Männedorf, Switzerland). All samples were tested in triplicate.

4. Western blot. HCE-T cell cultures (Table 1, 4 and 5) were washed with cold PBS twice, and lysed in ice-cold RIPA buffer (Sigma-Aldrich) supplemented with complete mini-protease inhibitor cocktail tablet (Roche Diagnostics, Mannheim, Germany). Both cytoplasmic and nuclear extracts were prepared with a nuclear and cytoplasmic extraction kit (Millipore, Australia, Pty, Ltd) according to the manufacturer's instructions. The protein concentrations of the lysates were determined by QuantiPro BCA Assay Kit (Sigma-Aldrich) according to the manufacturer's instructions.

Table 2. Groups for NF- κ B pathway.

Group 1	HCE-T only, untreated control
Group 2	HCE-T only, treated with vehicle (DMSO) 1 h, followed 24 h 100 U/ml rH IFN- γ +100 U/ml rH TNF
Group 3	HCE-T only, treated with BMS-345541 (5 μ M) 1 h, followed 24 h 100 U/ml rH IFN- γ +100 U/ml rH TNF
Group 4	As for group 2, HCE-T only, treated with vehicle (DMSO) 1 h, followed 48 h cytokines stimulation
Group 5	As for group 3, HCE-T only, treated with BMS-345541 (5 μ M) 1 h, followed 48 h cytokines stimulation

DMSO - Dimethyl sulfoxide (Research Organics, OH USA).
doi:10.1371/journal.pone.0101841.t002

Table 3. Groups for detection of TGF- β 1 secretion.

Group 1	HCE-T only, untreated control
Group 2	HCE-T only, 24 h 100 U/ml rH IFN- γ +100 U/ml rH TNF
Group 3	HCE-T/MSC, 24 h [HCE-T 100 U/ml rH IFN- γ +100 U/ml rH TNF] [MSC 100 U/ml rR IFN- γ +100 U/ml rR TNF]
Group 4	As for group 2, HCE-T only, 48 h cytokines stimulation
Group 5	As for group 3, HCE-T/MSC, 48 h cytokines stimulation
Group 6	MSC only, untreated control
Group 7	MSC only, 24 h 100 U/ml rR IFN- γ +100 U/ml rR TNF
Group 8	MSC only, 48 h 100 U/ml rR IFN- γ +100 U/ml rR TNF stimulation

doi:10.1371/journal.pone.0101841.t003

Cell lysates (15 μ g) from each group were electrophoresed in 10% SDS-polyacrylamide gels, then transferred onto polyvinylidene difluoride (PVDF, 0.45 μ m) membranes (Invitrogen) as described previously [24]. Briefly, the membranes were blocked with 5% bovine serum albumin (BSA, Sigma), and then incubated with anti-NF- κ B p65 (an isoform of NF- κ B), anti-IDO, anti-histone H2B and anti-GAPDH antibodies (Table 6) at 4°C overnight. The blots were then incubated with horseradish peroxidase (HRP)-conjugated secondary antibodies at RT for 2 h, and developed using Enhanced chemiluminescence (ECL) Plus (Thermo Scientific) and visualized using a Syngene G Box system (Syngene, Cambridge, UK). Protein expression was determined using GeneTool software (version 4.03.02.0, Syngene, UK) and relative protein levels normalized to GAPDH or Histone 2B were used for comparisons.

Statistical analysis

All experiments were repeated at least 3 times. Results were expressed as mean \pm standard error of the mean (SEM). The statistical significance was assessed using GraphPad Prism 5 (GraphPad Software, La Jolla, CA, USA). One way analysis of variance (ANOVA) with Tukey's multiple comparison was used for multi-group comparisons, and a two-tailed unpaired Student's t test was used for comparisons between two groups, and a p value of <0.05 was considered statistically significant.

Table 4. Groups for exogenous TGF- β 1 treatment.

Group 1	HCE-T only, untreated control
Group 2	HCE-T only, 24 h [100 U/ml rh IFN- γ +100 U/ml rh TNF]
Group 3	HCE-T only, TGF- β 1 10 ng/ml 1 h treatment, followed 24 h [100 U/ml rh IFN- γ +100 U/ml rh TNF]
Group 4	HCE-T only, as for group 2, 48 h cytokines stimulation
Group 5	HCE-T only, as for group 3, TGF- β 1 10 ng/ml 1 h treatment, followed 48 h cytokines stimulation
Group 6	HCE-T/MSC, untreated control
Group 7	HCE-T/MSC, 24 h TGF- β 1 10 ng/ml treatment
Group 8	HCE-T/MSC, 48 h TGF- β 1 10 ng/ml treatment

doi:10.1371/journal.pone.0101841.t004

Results

Modulatory effects of MSC on IgSF molecule expression

More than 98% of isolated primary rat MSC exhibiting the characteristic spindle shaped morphology were CD29⁺ and CD44⁺ with no CD34⁺ or CD45⁺ cells detected by flow cytometry (Figure 1). These cells have been demonstrated to be able to differentiated into corneal epithelial-like cells [25].

HCE-T constitutively expressed ICAM-1 and MHC-I, while HLA-DR and HLA-G was not expressed above isotype control levels (Figure 2 and inserts). HCE-T treated with IFN- γ (100 U/ml) and TNF (100 U/ml) showed a maximal 3-4-fold increase in ICAM-1 at 24 h, reducing to a 2-fold increase by 48 h, compared to untreated controls. MSC/HCE-T co-culture abrogated this up-regulation ($p < 0.01$ Figure 2A), with ICAM-1 expression remaining at control levels at both 24 h and 48 h in these cultures. Similarly, co-culture abrogated the cytokine-induced increase in MHC-I at 24 h and 48 h (both $p < 0.05$, Figure 2B) and the progressively increasing *de novo* HLA-DR expression at these time points ($p < 0.05$, Figures 2C). In contrast, HLA-G expression on HCE-T was not modulated by cytokine stimulation or MSC co-culture (Figure 2D). The level of expression of these antigens in untreated HCE-T/MSC co-culture was similar to that of untreated HCE-T (data not shown in figure).

Modulatory effect of MSC on cytokine-induced NF- κ B activation

As many of the pro-inflammatory effects of IFN- γ and TNF are induced via NF- κ B translocation, we investigated whether this pathway was modulated by MSC. As expected, the induced expression of ICAM-1 and MHC-I/MHC-II was significantly inhibited at 24 and 48 hour time points by HCE-T treatment with the NF- κ B inhibitor, BMS-345541, confirming the dependence of up-regulation of all three molecules on NF- κ B translocation (Figure 3A to C, $p < 0.05$). Furthermore, Western blot of HCE-T nuclear extracts showed a 3-fold increase in nuclear translocation of NF- κ B p65 protein at both 24 h and 48 h after cytokine treatment, compared to untreated controls (Figure 3D). However, co-culture with MSC significantly reduced translocation at both time points (both $p < 0.05$, Figure 3D). There was no significant reduction of NF- κ B p65 in cytoplasmic extracts (Figure 3E) after 24 h cytokine exposure compared to untreated controls. However, a significant increase in cytoplasmic retention was observed when co-cultured with MSC at this time point ($p < 0.05$). Neither of the 48 h cytoplasmic values was significantly different from controls. Compared to control HCE-T (Figure 3F), IFN- γ /TNF treatment induced obvious perinuclear staining and nuclear translocation of NF- κ B p65 by 24 h in HCE-T by immunohistochemistry (Figure 3G) and this was clearly reduced in HCE-T/MSC co-cultures (Figure 3H). Similar patterns of immunolabelling were observed at 48 h (not shown). HCE-T monolayers showed no obvious staining with rabbit IgG (Figure 3I).

Effect of MSC on cytokine-induced IDO expression

We next investigated the effect of MSC on cytokine-induced IDO expression. Western blot analysis showed almost undetectable IDO expression in untreated HCE-T (Figure 4A). Treatment with IFN- γ /TNF progressively increased IDO expression by approximately 180- and 220-fold at 24 h and 48 h, respectively, however, this was significantly inhibited by MSC co-culture at 24 h ($p < 0.05$) and 48 h ($p < 0.01$) (Figure 4A). Furthermore, similar to the effect on cytokine-induced IgSF molecules, treatment with BMS-345541 significantly reduced IFN- γ /TNF-induced IDO expression at both 24 h and 48 h ($p < 0.01$,

Table 5. Groups for TGF- β 1 signaling pathway experiments.

Group 1	HCE-T only, untreated control
Group 2	HCE-T only, 24 h 100 U/ml rh IFN- γ +100 U/ml rH TNF stimulation
Group 3	HCE-T/MSC 1 h vehicle (DMSO) treatment followed 24 h [HCE-T 100 U/ml rh IFN- γ +100 U/ml rH TNF] [MSC 100 U/ml rR IFN- γ +100 U/ml TNF]
Group 4	HCE-T/MSC, treatment 1 h anti- TGF- β 1 antibody (1 μ g/ml) and SB-431542 (1 μ M/ml), then 24 h [HCE-T 100 U/ml rh IFN- γ +100 U/ml rH TNF] [MSC 100 U/ml rR IFN- γ +100 U/ml rR TNF]
Group 5	HCE-T only, as for group 2, 48 h cytokines stimulation
Group 6	HCE-T/MSC, as for group 3, 1 h DMSO treatment, followed 48 h cytokines stimulation
Group 7	HCE-T/MSC, as for group 4, 1 h anti- TGF- β 1 antibody (1 μ g/ml) and SB-431542 (1 μ M/ml) treatment, followed 48 h cytokines stimulation

doi:10.1371/journal.pone.0101841.t005

Figure 4B). Interestingly, however, this treatment had a significantly greater effect at 24 h than 48 h ($p < 0.01$, Figure 4B), suggesting IDO up-regulation may also be occurring via another pathway.

The involvement of TGF- β 1 in the modulatory effect of MSC on IDO induction

Because of the immunosuppressive nature of TGF- β 1 and since this is produced by MSC [26,27], an ELISA was performed to evaluate the secretion of TGF- β 1 in HCE-T/MSC co-cultures. There was no significant difference in total TGF- β 1 production between untreated HCE-T monocultures and HCE-T/MSC co-cultures. Stimulation with IFN- γ /TNF over 48 h did not

Table 6. Antibodies, conjugates and immunoreagents.

Primary antibodies and immunoglobulin (Ig) controls	Working dilutions concentrations	Applications	Manufacturer
PE anti-mouse/rat CD29	1:50 1:100	FCM IF	BioLegend, CA, USA
PE anti-rat CD44H	1:50	FCM	BioLegend
FITC mouse anti-rat CD34	1:5	FCM	Santa Cruz, CA, USA
Alexa Fluor 488 mouse anti-rat CD45	1:50	FCM	BioLegend
Alexa Fluor 488 anti-human CD54 (ICAM-1)	1:20	FCM	BioLegend
Alexa Fluor 488 anti-human HLA-A, B, C (MHC-I)	1:20	FCM	BioLegend
Alexa Fluor 488 mouse anti-human HLA-DR (MHC-II)	1:50	FCM	BioLegend
Purified anti-human HLA-G (MHC-Ib)	1:50	FCM	BioLegend
Rabbit anti-NF- κ B (p65)	1:100	IF	Santa Cruz, CA, USA
	1:5000	WB	
Mouse anti-IDO	1:1000	WB	Millipore, MA, USA
Mouse anti-GAPDH	1:10,000	WB	Hytect Ltd. Finland
Rabbit anti-histone H2B	1:1000	WB	Cell Signaling, MA, USA
PE Armenian hamster IgG isotype control	1:20	FCM	BioLegend
Alexa Fluor 488 mouse IgG1 isotype control (FC)	1:20	FCM	BioLegend
FITC mouse IgG1 isotype control	1:5	FCM	BioLegend
Mouse IgG	10 μ g/ml	FCM	Jackson ImmunoResearch Laboratory
Rabbit IgG	4 μ g/ml	IF	Jackson ImmunoResearch Laboratory, PA, USA
Secondary antibodies	Dilutions	Applications	Manufacturer
Donkey anti-mouse Alexa Fluor 488	1:1000	FCM	Molecular Probes, CA, USA
Donkey anti-rabbit Alexa Fluor 488	1:1000	IF	Molecular Probes, CA, USA
HRP conjugated goat anti-mouse IgG	1:20,000	WB	Millipore
HRP conjugated goat anti-rabbit IgG	1:25,000	WB	Millipore

FCM: flow cytometry; WB: Western blotting; IF: immunofluorescence staining.

doi:10.1371/journal.pone.0101841.t006

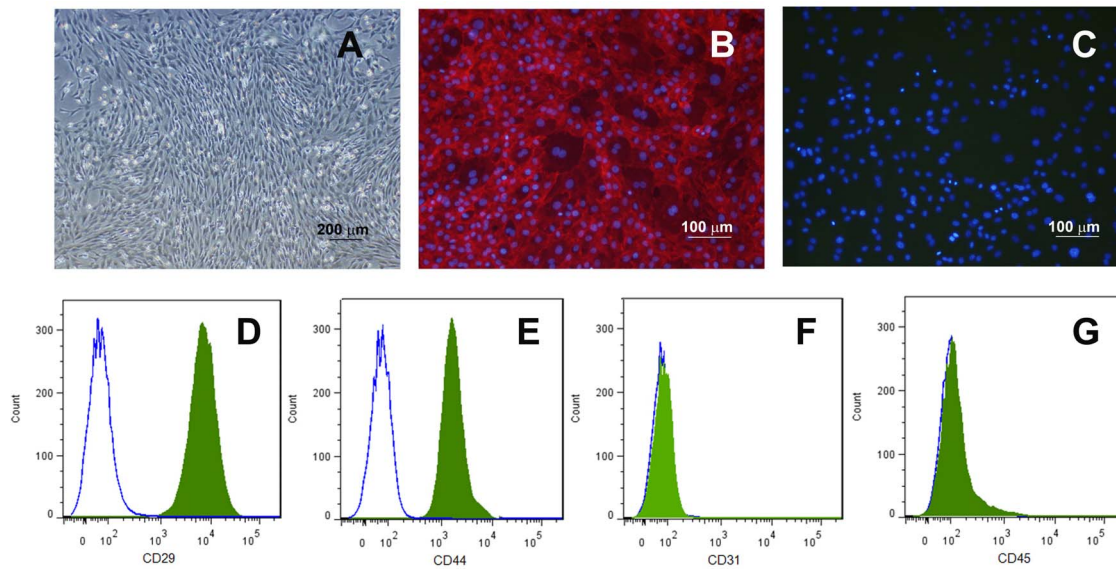


Figure 1. Immunophenotype of rat MSCs. Rat MSCs display spindle shape and reach confluent at 14 days post-isolation (A). More than 98% of the population are positive to the mesenchymal markers CD29 (B, D) and CD44 (E), and negative to the hematopoietic markers CD34 (C, F) and CD45 (G). Green shaded profile, antibodies staining; blue open profile, isotype control.
doi:10.1371/journal.pone.0101841.g001

statistically increase the amount of total TGF- β 1 in HCE-T monocultures. However, IFN- γ /TNF-stimulated HCE-T/MSC co-culture increased TGF- β 1 from HCE-T by 24 h ($p = 0.052$), and significantly increased at 48 h ($P < 0.01$, Figure 5A). Levels of active TGF- β 1 were $< 5\%$ of the total TGF- β 1 and similar in untreated HCE-T and MSC monocultures (Figure 5B). IFN- γ /TNF treatment significantly increased active TGF- β 1 secretion from HCE-T ($p < 0.01$) and MSC ($p < 0.05$) monocultures by 48 h. Compared to untreated monocultures, IFN- γ /TNF-stimulated HCE-T/MSC co-culture showed a significant increase in active TGF- β 1 production after 48 h, [70.2 ± 8.92 pg/ml (mean \pm SEM), $p < 0.01$], levels were greater than IFN- γ /TNF-treated MSC or HCE-T monocultures (MSCs 53.8 ± 5.1 pg/ml and HCE-T 51.8 ± 2.9 pg/ml respectively) (Figure 5B).

To investigate the association between TGF- β 1 and the modulatory effects of MSC on HCE-T, exogenous TGF- β 1 was added to IFN- γ /TNF-treated HCE-T monocultures. Western blot analysis showed that IDO expression was significantly inhibited at 24 h and 48 h ($p < 0.05$ at both time points, Figure 6A), while MSCs did not affect IDO expression on untreated HCE-Ts. Interestingly, IDO expression on HCE-T/MSC co-cultures treated with TGF- β 1 for 48 h was significant lower than untreated HCE-T monocultures ($p < 0.01$, Figure 6B). Furthermore, blockade of the TGF- β 1 signaling pathway in IFN- γ /TNF-treated MSC/HCE-T co-cultures by a combination of neutralizing anti-TGF- β 1 antibody and SB-431542, a TGF- β receptor I blocker, resulted in significant inhibition of the down-regulatory effect of MSC on IDO expression by 48 h ($p < 0.05$, Figure 6C). However, this did not fully remove the effect of MSC co-culture, confirming that IDO is downregulated by more than one pathway in this system.

Discussion

The effects of stem cells on corneal wound healing and epithelial regeneration have been widely discussed with respect to their potential for trans-differentiation [16–18]. However, focus has recently increased on the potential anti-inflammatory effects of MSC in these processes. Although the administration of MSC

systemically or topically has a therapeutic effect in ocular surface wound healing by reducing local inflammation and neovascularization, mechanistic detail remains unclear [19–21,28,29]. To further elucidate this, we used an *in vitro* model to examine the anti-inflammatory and immunoregulatory effects of MSC on pro-inflammatory cytokine (IFN- γ /TNF)-stimulated human corneal epithelial cells.

The infiltration of inflammatory cells into the site of cell damage is an initial step in tissue injury that depends on the interactions between locally upregulated adhesion molecules such as ICAM-1 on tissue cells, and LFA-1 expressed on virtually immigrating leukocytes. Excessive inflammatory cell infiltration may lead to severe corneal damage, for example, via enzymes released from neutrophils [30], while neovascularization, mediated by VEGF from infiltrating neutrophils and macrophages, ultimately reduces function [31,32]. In addition, epithelial MHC-I and MHC-II molecules could informally present antigen to T-lymphocytes that migrate to sites of corneal injury in adaptive responses due to infection or autoimmunity. Up-regulated MHC-I and MHC-II would increase the efficiency of this interaction and render epithelial cells more susceptible to T cell-mediated cytotoxicity [33–35]. Our results showed that MSC effectively abrogated IFN- γ /TNF-induced ICAM-1 and MHC-I and II expression on HCE-T. An inhibitory effect on ICAM-1 expression mediated by MSC has been observed in MSC/pulmonary endothelial cell co-cultures [36] and MSC/human umbilical endothelial cell (HUVECs) co-cultures [37]. To our knowledge, this is the first time inhibition of these molecules mediated by MSC has been observed on corneal epithelium.

In contrast to MHC-II, which was induced *de novo* by IFN- γ /TNF treatment in our study, HLA-G expression on HCE-T was neither induced *de novo* by these cytokines, nor affected by MSC co-culture. HLA-G is an important soluble factor for immunomodulation by MSC [38]. Immunosuppressive functions of HLA-G include inhibition of CD4 $^{+}$ and CD8 $^{+}$ T-cell proliferation, and impairment of natural killer cell activation and inhibition of CD4 $^{+}$ T-cell proliferation [38,39]. Lack of responsiveness of HLA-G in our study may be related to a) the possible requirement for direct

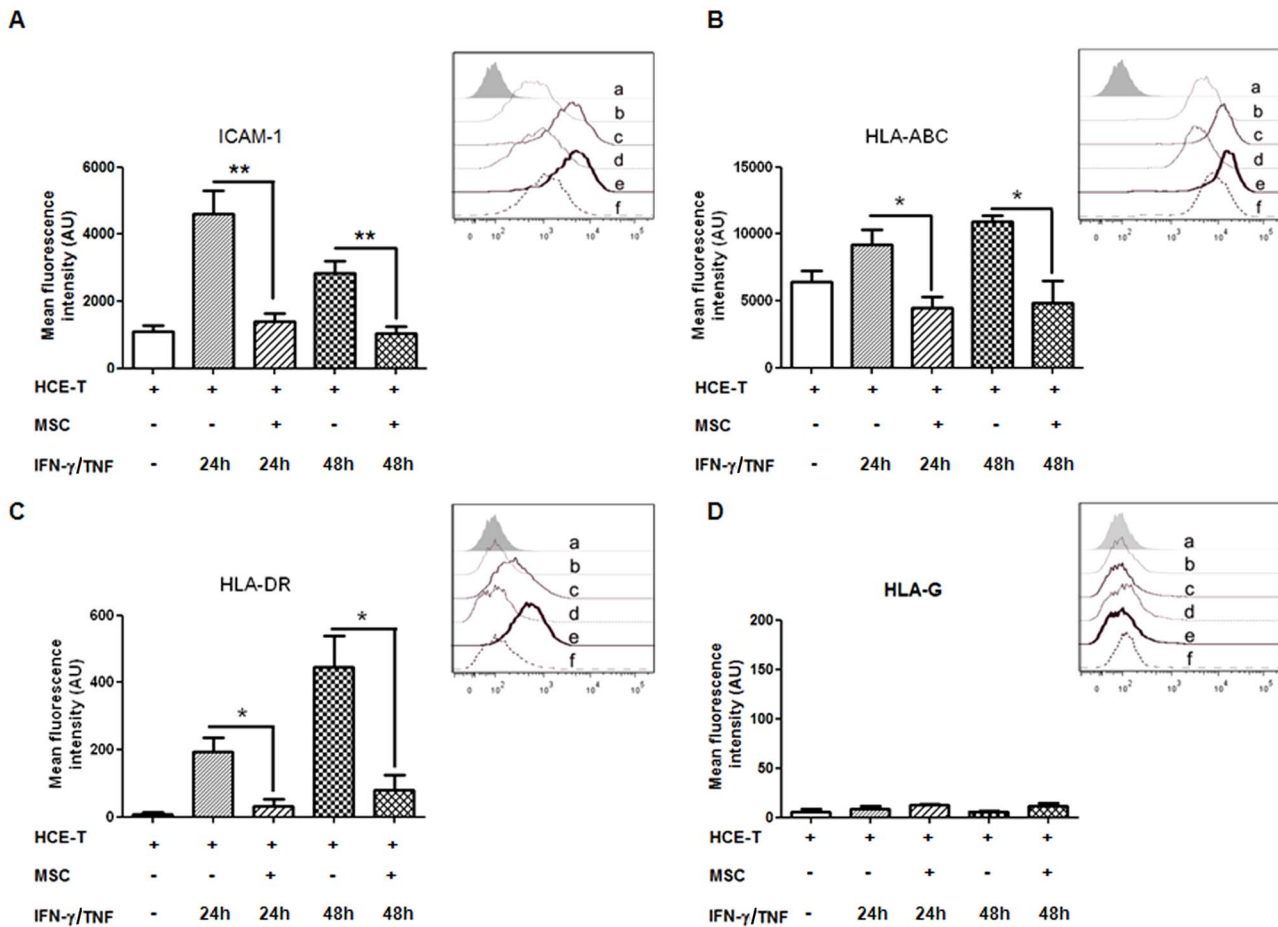


Figure 2. Modulatory effects of MSC on IgSF molecule expression. Bar graphs showing the relative expressions of ICAM-1 (A), HLA-ABC (B), HLA-DR (C) and HLA-G (D) on HCE-T cells, as determined by FCM. HCE-Ts were either untreated or treated for 24 h and 48 h with IFN- γ (100 U/ml) and TNF (100 U/ml) on monocultures and HCE-T/MSC co-cultures. The inserts are representative FCM histograms, and the abscissa represents log₁₀ fluorescent intensity in arbitrary units (AU) [a. isotype control Alexa 488 conjugated mouse IgG; b. untreated HCE-T; c. 24 h IFN- γ /TNF treatment on HCE-T monoculture; d. 24 h IFN- γ /TNF treatment on HCE-T/MSC co-culture; e. 48 h combination cytokines stimulation on HCE-T monoculture; f. 48 h combination cytokine stimulation on HCE-T/MSC co-culture]. Data represents mean \pm SEM of four separate experiments (n = 4). *: p < 0.05, **: p < 0.01. The "+" or "-" symbol denotes the presence or absence of the denoted treatment or cell type at the left. doi:10.1371/journal.pone.0101841.g002

contact between MSC and HCE-T to modulate HLA-G expression on HCE-T and/or b) insufficient IFN- γ /TNF to induce HLA-G expression or c) refractoriness of the HCE-T cells in this study.

The transcription factor, NF- κ B, regulates the expression of a large number of genes coding for cell surface molecules involved in inflammatory responses [34,40]. Inhibition of NF- κ B decreases the expression of molecules such as ICAM-1 and VCAM-1 on HUVEC and epithelial cells, and MHC-I and MHC-II on dendritic cells [41–43]. Suppression of NF- κ B translocation and reduction of NF- κ B mRNA have been demonstrated in MSC transplantation in myocardial infarction and in traumatic brain injury rat models [44,45]. BMS-343341 prevents neutrophil infiltration in an animal model of spinal cord injury by inhibiting ICAM-1 expression and down-regulates TNF-induced ICAM-1 expression in HUVEC [46,47]. NF- κ B inhibition with BMS-343341 in our studies confirmed the NF- κ B pathway dependence of IFN- γ /TNF-induced ICAM-1, MHC-I and MHC-II up-regulation, while MSC similarly, significantly reduced IFN- γ /TNF-induced NF- κ B nuclear translocation in corneal epithelial cells. The mechanism by which MSC down-regulate NF- κ B

translocation in our model is unclear. Some studies have shown that TNF- α -stimulated gene/protein 6 (TSG-6) can inhibit nuclear translocation of NF- κ B [45,48,49]. Increased TSG-6 with decreased NF- κ B mRNA and protein has also been reported with MSC transplantation in a rat model of traumatic brain injury[45]. The role of TSG-6 in our model will be explored in future studies.

TGF- β 1 is an important cytokine with potent immunoregulatory properties. It regulates the differentiation, proliferation and activation of lymphocytes, macrophages and dendritic cells and has immunosuppressive effects on T cells and neutrophils in a broad spectrum of pathological circumstances [50]. TGF- β 1 is constitutively secreted by MSC, and the addition of anti-TGF- β 1 antibody attenuated the suppressive effect of MSC on proliferation of peripheral blood lymphocytes [51]. Topical and systemic administration of MSC in animal models of chemical- or heat-induced corneal injury revealed increased levels of TGF- β 1 mRNA and protein in the epithelial, stromal and endothelial layers of cornea [20,28]. Our data show that IFN- γ /TNF stimulation over 48 h significantly increased active TGF- β 1 secretion from MSC and HCE-T monocultures. In addition, the level of total TGF- β 1 in 48 h cytokine-stimulated HCE-T/MSC

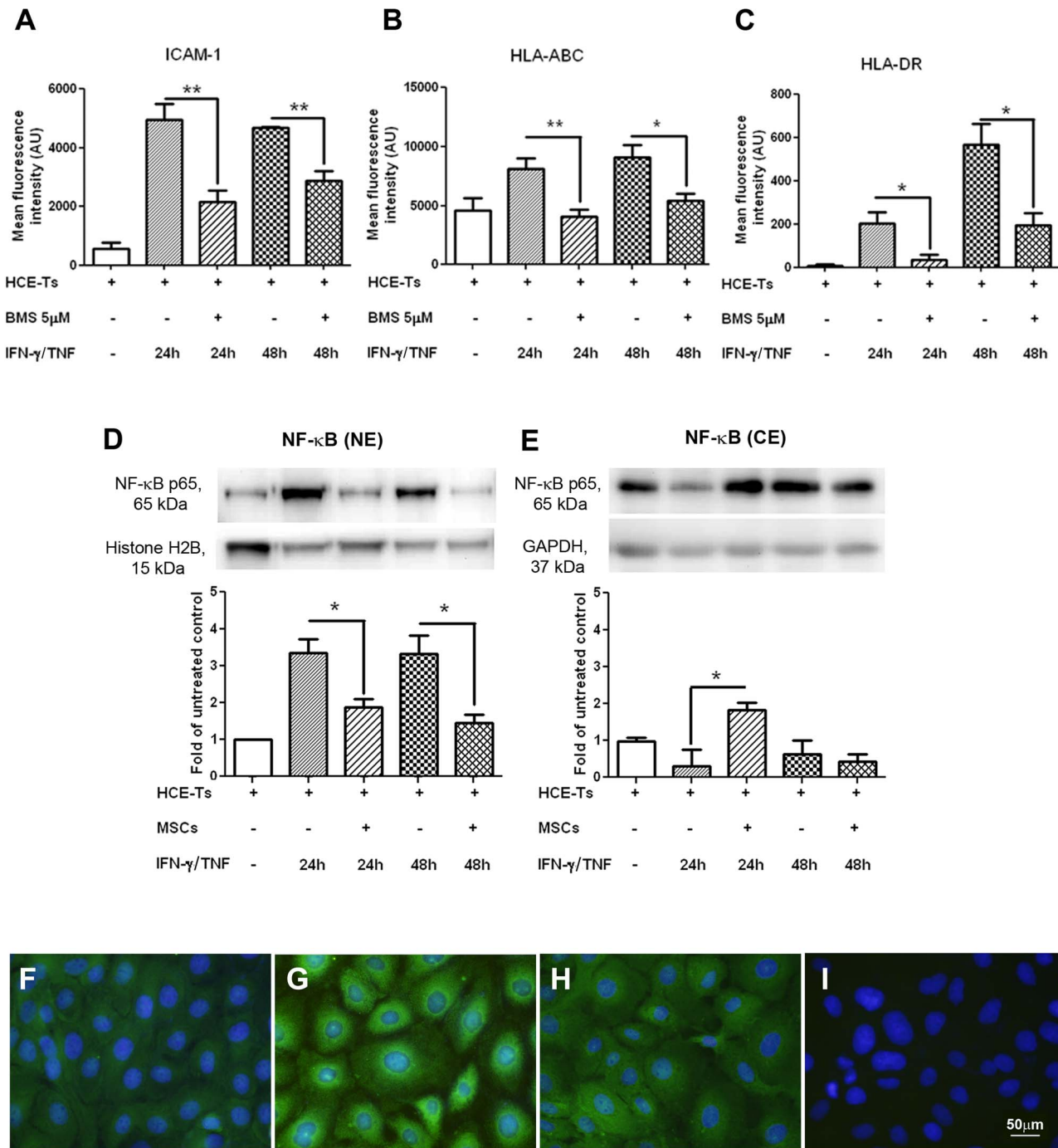


Figure 3. Blocked NF- κ B activation inhibits cytokine-upregulated IgSF molecules expression, and MSC modulates cytokine-induced NF- κ B nuclear translocation. A to C shows FCM analysis of HCE-T cells treated with BMS-345541 (5 μ M), a NF- κ B pathway inhibitor, significantly inhibited IFN- γ (100 U/ml) and TNF (100 U/ml) induced ICAM-1 (A), HLA-ABC (B), and HLA-DR (C) expression. Data represents mean \pm SEM of four separate experiments (n=4). *: p<0.05, **: p<0.01. D and E (upper panel) show representative bands of western blots for NF- κ B p65 (65 kDa) in nuclear extracts (NE, D) and cytoplasmic extracts (CE, E). Histone H2B (15 kDa) and GAPDH (37 kDa) were used as the loading controls for nuclear and cytoplasmic extracts, respectively. Protein was prepared from HCE-T cells with or without IFN- γ /TNF stimulation, or HCE-T/MSCs co-cultured with 24 h and 48 h IFN- γ /TNF treatment. The lower panel shows the fold changes of NF- κ B within nuclear extracts and cytoplasmic extracts compared with the untreated group, using Histone H2B and GAPDH as loading controls. Data represents mean \pm SEM of four separate experiments (n=4). *: p<0.05. F to I show representative immunocytochemistry images. Untreated HCE-T cells displayed weak NF- κ B nuclear and cytoplasmic staining (F); NF- κ B expression showed marked nuclear and perinuclear translocation after 24 h IFN- γ /TNF stimulation of HCE-T monocultures (G); NF- κ B perinuclear and nuclear translocation decreased at 24 h in IFN- γ /TNF in stimulated HCE-Ts/MSCs co-cultures (H); HCE-T monolayer showed no obvious staining with rabbit IgG (I). The "+" or "-" symbol denotes the presence or absence of the denoted treatment or cell type at the left. doi:10.1371/journal.pone.0101841.g003

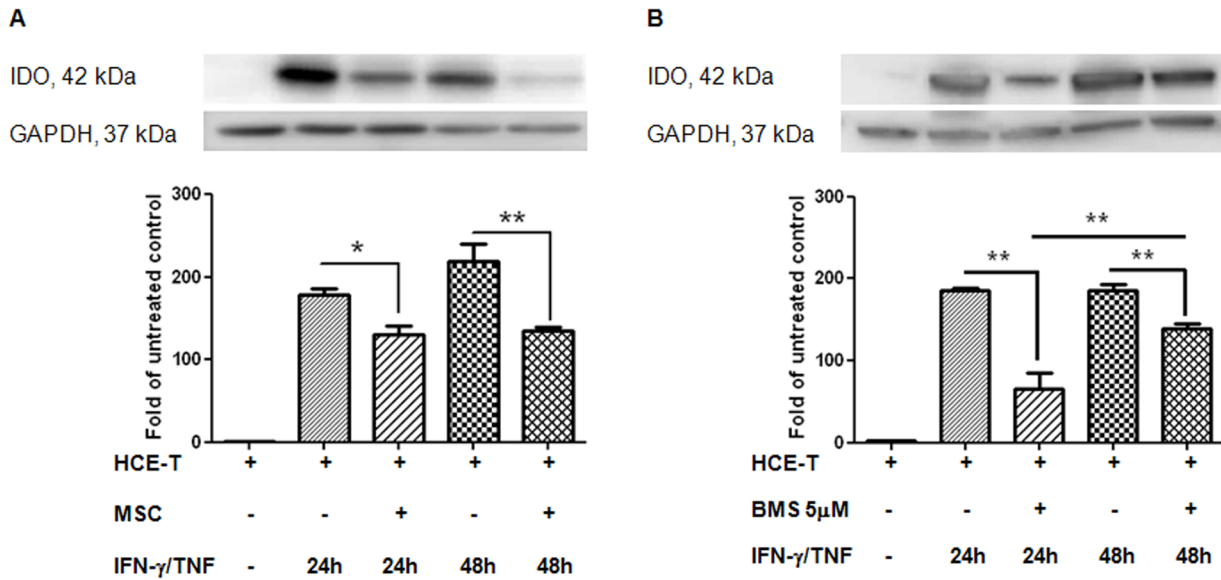


Figure 4. The modulatory effect of MSC on cytokine-induced IDO expression, and the association of NF- κ B to the modulation. The upper panels are representative images of individual experiments. **(A)** Bar graphs show IDO expression in untreated HCE-T, HCE-T monocultures and HCE-T/MSC co-cultures stimulated for 24 h and 48 h with IFN- γ (100 U/ml) and TNF (100 U/ml), semi-quantified by densitometry with GAPDH as loading control. Combination treatment with cytokine remarkably induced IDO expression in HCE-T monocultures, while HCE-T/MSC co-cultured significantly attenuated this induction on 24 h ($p < 0.05$) and 48 h ($p < 0.01$). **(B)** Treatment with BMS-345541, a NF- κ B pathway inhibitor, significantly reduced the cytokine-induced-IDO expression at both 24 h and 48 h ($p < 0.01$). Data represents the results from three individual experiments ($n = 3$) \pm SEM. *: $p < 0.05$, **: $p < 0.01$. The “+” or “-” symbol denotes the presence or absence of the denoted treatment or cell type at the left. doi:10.1371/journal.pone.0101841.g004

co-cultures was increased compared to 48 h cytokine-stimulated HCE-T monocultures, indicating that the increase in total TGF- β 1 was associated with the presence of MSC. TGF- β 1 has been reported to suppress NF- κ B activation [52], but we observed neither reduced NF- κ B translocation in response to exogenous

TGF- β 1 nor down-regulation of the IgSF molecules tested (data not shown). On the other hand, TGF- β clearly down-regulated IDO expression in cytokine-stimulated HCE-T/MSC co-cultures.

IDO catalyses the breakdown of the essential amino acid, L-tryptophan, to kynurenine. As the initial and rate-limiting enzyme

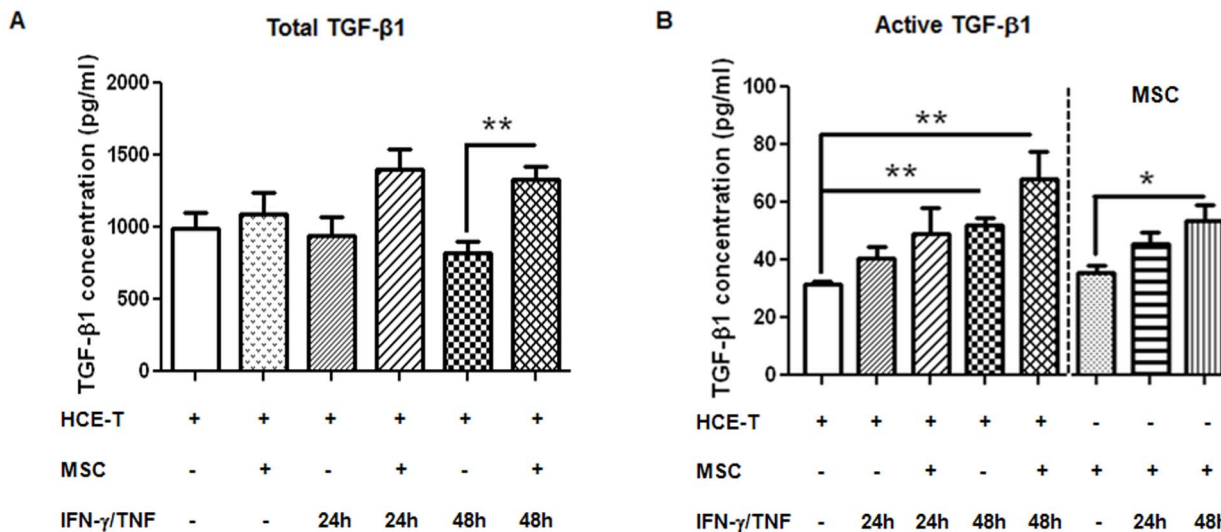


Figure 5. The effect of MSC on TGF- β 1 secretion. The concentration of **(A)** total and **(B)** active TGF- β 1 secretion in conditioned media collected from untreated HCE-T monocultures, MSC monocultures and HCE-T/MSC co-cultures, or HCE-T monocultures, MSC monocultures and HCE-T/MSC co-cultured with IFN- γ /TNF stimulation for 24 h and 48 h was measured by ELISA. **(A)** A similar level of TGF- β 1 was detected from untreated HCE-T monocultures and HCE-T/MSC co-cultures. IFN- γ /TNF-stimulated HCE-T/MSC co-culture showed increased total TGF- β 1 from HCE-Ts at 24 h ($p = 0.052$), and significantly increased at 48 h ($P < 0.01$). **(B)** IFN- γ /TNF treatment significantly increased active TGF- β 1 secretion from HCE-T ($p < 0.01$) and MSC ($p < 0.05$) monocultures at 48 h. Compared to untreated monocultures, IFN- γ /TNF-stimulated HCE-T/MSC co-culture showed a significant increase in active TGF- β 1 after 48 h, ($p < 0.05$). Data represents the results from three individual experiments ($n = 3$) \pm SEM. *: $p < 0.05$, **: $p < 0.01$. The “+” or “-” symbol denotes the presence or absence of the denoted treatment or cell type at the left. doi:10.1371/journal.pone.0101841.g005

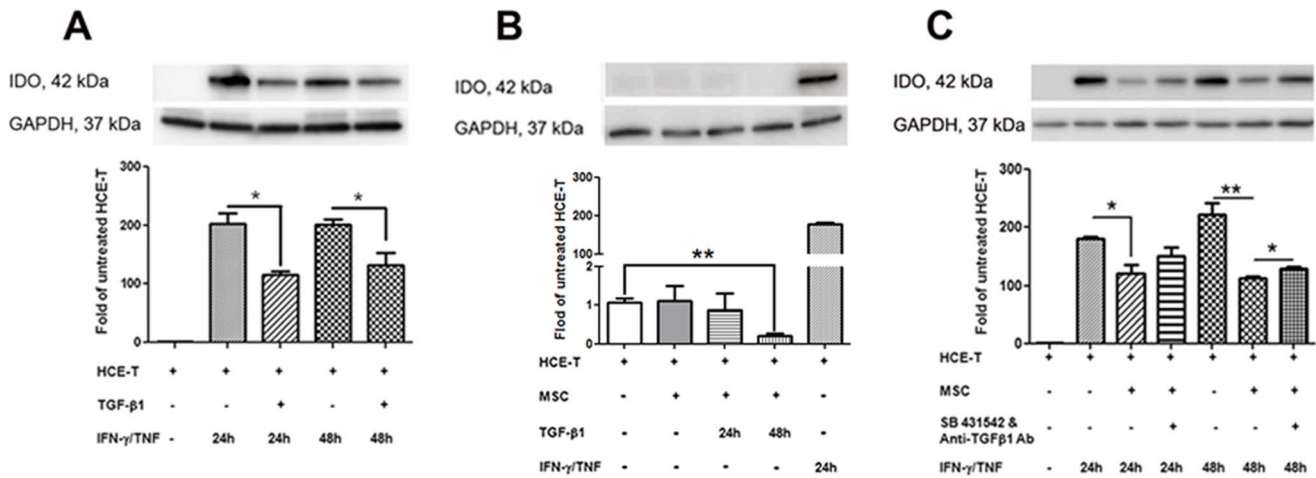


Figure 6. The involvement of TGF- β 1 in the modulatory effect of MSCs on IDO induction. (A) Untreated HCE-T, HCE-T monocultures exposed to IFN- γ /TNF for 24 h and 48 h with or without 10 ng/ml TGF- β 1 pre-treatment. The cytokines-induced IDO expression was significantly inhibited by TGF- β 1 at 24 h and 48 h ($p < 0.05$ at both time points). (B) HCE-T/MSc co-cultures without and with TGF- β 1 10 ng/ml 24 h treatment express a similar low level of IDO as untreated HCE-T monocultures (less than 2 folds). The IDO expression is significant lower in the HCE-T/MSc co-cultures with 48 h TGF- β 1 treatment compared to the untreated HCE-T monolayers ($p < 0.01$). While IDO expression from HCE-Ts stimulated with IFN- γ /TNF for 24 h was more than 180 folds higher than untreated HCE-Ts. (C) Untreated HCE-T, HCE-T monocultures stimulated with IFN- γ /TNF for 24 h and 48 h, or HCE-T/MSc co-cultures stimulated by IFN- γ /TNF with or without combined SB-431542 (1 μ M) and anti-TGF- β 1 antibody (1 μ g/ml) treatment. Blockade of the TGF- β 1 signaling pathway in IFN- γ /TNF-treated MSC/HCE-T co-cultures using combined neutralizing anti-TGF- β 1 antibody and SB-431542, a TGF- β receptor I blocker, significantly reversed the down-regulatory effect of MSC on IDO expression by 48 h ($p < 0.05$). The upper panels are representative images of individual western blots for IDO (42 kDa) and GAPDH (37 kDa) expression in HCE-T cells. Each bar summarizes the data from 3 individual experiments ($n = 3$) \pm SEM. *: $p < 0.05$, **: $p < 0.01$. The "+" or "-" symbol denotes the presence or absence of the denoted treatment or cell type at the left.
doi:10.1371/journal.pone.0101841.g006

of the kynurenine pathway, the depletion of L-tryptophan locally inhibits T cell proliferation, while kynurenine is toxic to a range of immune cells [53]. IDO-dependent suppression of T-cell responses appears to function as a natural immunoregulatory mechanism. Our results show that IFN- γ /TNF stimulation significantly induced IDO expression on HCE-T and is consistent with published data that IFN- γ induces IDO expression and TNF acts synergistically [54]. Modulatory IDO production and activity is potentially a feature of MSC immunoregulation [55]. However, to our knowledge the effect of MSC on IDO expression induced in cells acted on by MSC has not been investigated. Contrary to our expectations, MSC significantly attenuated cytokine-induced IDO expression on HCE-T, while the inhibition of IDO by BMS-345541 confirmed the importance of the NF- κ B pathway in its induction. Interestingly, the reduction of IDO expression was greater at 24 h than 48 h, suggesting that IDO up-regulation may be controlled by other pathways.

Exogenous TGF- β 1 treatment of cytokine-stimulated HCE-T monoculture also significantly attenuated cytokine-induced IDO expression, while in cytokine-stimulated co-cultures, TGF- β receptor I blockade and neutralizing TGF- β 1 antibody together substantially reversed the modulating effect of MSC on cytokine-induced IDO expression. Previous studies have shown that TGF- β inhibits IFN- γ -induced IDO activation in human monocyte-derived-macrophages [56], and abrogates IFN- γ -induced IDO expression in human skin and synovial fibroblasts *in vitro* at both the mRNA and protein levels [57]. Over expression of IDO decreases colonic epithelial cell proliferation and results in cell cycle arrest in lens epithelial cells, since tryptophan is crucial for epithelial cell replication [58,59]. Our findings show that in MSC/HCE-T co-cultures, TGF- β 1 down regulates IDO expression in corneal epithelial cells and that the modulatory effect of MSC involves both NF- κ B and TGF- β 1 signaling pathways in our

model. The reduction of IDO expression by MSC may contribute to corneal re-epithelialization after injury.

Previous studies using MSC from heterogenic species to investigate corneal repair have used human MSC in animal models [19,60]. In contrast, we used rat MSC with human corneal epithelium *in vitro*. Notwithstanding, our data corroborate these *in vivo* studies, further emphasizing the correspondence of these anti-inflammatory process between species.

There are limitations of this *in vitro* model. Clearly, the effect of MSC on local leukocyte recruitment into cytokine-stimulated tissue and the influence of IDO on corneal re-epithelialization would be better investigated in an *in vivo* model. Nevertheless, studies to dissect out further potential mechanisms of MSC-mediated anti-inflammatory modulation of corneal repair and injury protection are warranted. Co-cultured HCE-T and MSC provide a useful *in vitro* model to study this.

In conclusion, our results suggest that MSC reduce the expression of adhesion molecules and immunoregulatory molecules on HCE-T stimulated with pro-inflammatory cytokines, via NF- κ B signaling pathways. Increased TGF- β 1 secretion in MSC and MSC/HCE-T co-cultures inhibited NF- κ B activation and attenuated cytokine-induced IDO expression. These modulatory effects may provide an environment more favorable for corneal epithelial regeneration, further supporting the therapeutic potential of MSC in corneal injury recovery.

Supporting Information

Figure S1 Hypothesis, experimental design and results of the study. Flowchart summarizes the hypothesis, experimental design and results of the current study.
(JPG)

Acknowledgments

The authors thank Professor John McAvoy for his ongoing encouragement and support, and Associate Professor Frank Lovicu for the helpful input in the animal work. The flow cytometry analysis was undertaken at the Bosch Institute, University of Sydney.

References

- Li Z, Burns AR, Rumbaut RE, Smith CW (2007) gamma delta T cells are necessary for platelet and neutrophil accumulation in limbal vessels and efficient epithelial repair after corneal abrasion. *Am J Pathol* 171: 838–845.
- Oh JY, Choi H, Lee RH, Roddy GW, Ylostalo JH, et al. (2012) Identification of the HSPB4/TLR2/NF-kappaB axis in macrophage as a therapeutic target for sterile inflammation of the cornea. *EMBO Mol Med* 4: 435–448.
- Oh JY, Kim MK, Shin MS, Lee HJ, Lee JH, et al. (2009) The anti-inflammatory effect of subconjunctival bevacizumab on chemically burned rat corneas. *Curr Eye Res* 34: 85–91.
- Sadrai Z, Hajrasouliha AR, Chauhan S, Saban DR, Dastjerdi MH, et al. (2011) Effect of topical azithromycin on corneal innate immune responses. *Invest Ophthalmol Vis Sci* 52: 2525–2531.
- Uwaydat S, Jha P, Tytarenko R, Brown H, Wiggins M, et al. (2011) The use of topical honey in the treatment of corneal abrasions and endotoxin-induced keratitis in an animal model. *Curr Eye Res* 36: 787–796.
- Kao WW, Zhu G, Benza R, Kao CW, Ishizaki M, et al. (1996) Appearance of immune cells and expression of MHC II DQ molecule by fibroblasts in alkali-burned corneas. *Cornea* 15: 397–408.
- Li Z, Burns AR, Smith CW (2006) Lymphocyte function-associated antigen-1-dependent inhibition of corneal wound healing. *Am J Pathol* 169: 1590–1600.
- Bellner L, Wolstein J, Patil KA, Dunn MW, Laniado-Schwartzman M (2011) BILVERDIN Rescues the HO-2 Null Mouse Phenotype of Unresolved Chronic Inflammation Following Corneal Epithelial Injury. *Invest Ophthalmol Vis Sci* 52: 3246–3253.
- Mika J, Zychowska M, Popielek-Barczyk K, Rojewska E, Przewlocka B (2013) Importance of glial activation in neuropathic pain. *Eur J Pharmacol* 716: 106–119.
- Vitkovic L, Maeda S, Sternberg E (2001) Anti-inflammatory cytokines: expression and action in the brain. *Neuroimmunomodulation* 9: 295–312.
- Macchiariulo A, Camaioni E, Nuti R, Pellicciari R (2009) Highlights at the gate of tryptophan catabolism: a review on the mechanisms of activation and regulation of indoleamine 2,3-dioxygenase (IDO), a novel target in cancer disease. *Amino Acids* 37: 219–229.
- Zaher SS, Germain C, Fu H, Larkin DF, George AJ (2011) 3-hydroxykynurenine suppresses CD4+ T-cell proliferation, induces T-regulatory-cell development, and prolongs corneal allograft survival. *Invest Ophthalmol Vis Sci* 52: 2640–2648.
- Serbecic N, Beutelspacher SC (2006) Indoleamine 2,3-dioxygenase protects corneal endothelial cells from UV mediated damage. *Exp Eye Res* 82: 416–426.
- Friedenstein AJ, Chailakhyan RK, Latsnik NV, Panasyuk AF, Keiliss-Borok IV (1974) Stromal cells responsible for transferring the microenvironment of the hemopoietic tissues. Cloning in vitro and retransplantation in vivo. *Transplantation* 17: 331–340.
- Ye J, Yao K, Kim JC (2006) Mesenchymal stem cell transplantation in a rabbit corneal alkali burn model: engraftment and involvement in wound healing. *Eye* 20: 482–490.
- Gu S, Xing C, Han J, Tso MO, Hong J (2009) Differentiation of rabbit bone marrow mesenchymal stem cells into corneal epithelial cells in vivo and ex vivo. *Mol Vis* 15: 99–107.
- Reinshagen H, Auw-Haedrich C, Sorg RV, Boehringer D, Eberwein P, et al. (2011) Corneal surface reconstruction using adult mesenchymal stem cells in experimental limbal stem cell deficiency in rabbits. *Acta Ophthalmol* 89: 741–748.
- Jiang TS, Cai L, Ji WY, Hui YN, Wang YS, et al. (2010) Reconstruction of the corneal epithelium with induced marrow mesenchymal stem cells in rats. *Mol Vis* 16: 1304–1316.
- Ma Y, Xu Y, Xiao Z, Yang W, Zhang C, et al. (2006) Reconstruction of chemically burned rat corneal surface by bone marrow-derived human mesenchymal stem cells. *Stem Cells* 24: 315–321.
- Oh JY, Kim MK, Shin MS, Lee HJ, Ko JH, et al. (2008) The anti-inflammatory and anti-angiogenic role of mesenchymal stem cells in corneal wound healing following chemical injury. *Stem Cells* 26: 1047–1055.
- Roddy GW, Oh JY, Lee RH, Bartosh TJ, Ylostalo J, et al. (2011) Action at a distance: systemically administered adult stem/progenitor cells (MSCs) reduce inflammatory damage to the cornea without engraftment and primarily by secretion of TNF-alpha stimulated gene/protein 6. *Stem Cells* 29: 1572–1579.
- Oh JY, Kim MK, Shin MS, Wee WR, Lee JH (2009) Cytokine secretion by human mesenchymal stem cells cocultured with damaged corneal epithelial cells. *Cytokine* 46: 100–103.
- Tchedre K, Imayasu M, Hori Y, Cavanagh HD (2013) Contact lens care solutions downregulate membrane-associated mucins 1 and 16 in cultured human corneal epithelial cells and at the rat corneal surface in vivo. *Eye Contact Lens* 39: 394–399.

Author Contributions

Conceived and designed the experiments: LW MZ MCM NJCK GS CP FAB KM. Performed the experiments: LW MZ MCM. Analyzed the data: LW MZ MCM JY NJCK. Contributed reagents/materials/analysis tools: FAB KM GS. Contributed to the writing of the manuscript: LW MZ MCM NJCK JY CP FAB KM GS.

- You J, Hodge C, Wen L, McAvoy JW, Madigan MC, et al. (2012) Using soybean trypsin inhibitor as an external loading control for Western blot analysis of tear proteins: Application to corneal disease. *Experimental Eye Research* 99: 55–62.
- Wen L, Zhu M, Petsoglou C (2014) Differentiation and immunomodulatory effects of bone marrow-derived mesenchymal stem cells on human corneal epithelium. *Chin J Cell Stem Cell* 4(1):5–15.
- Marie JC, Letterio JJ, Gavin M, Rudensky AY (2005) TGF-beta1 maintains suppressor function and Foxp3 expression in CD4+CD25+ regulatory T cells. *J Exp Med* 201: 1061–1067.
- Ryan JM, Barry F, Murphy JM, Mahon BP (2007) Interferon-gamma does not break, but promotes the immunosuppressive capacity of adult human mesenchymal stem cells. *Clin Exp Immunol* 149: 353–363.
- Lan Y, Kodati S, Lee HS, Omoto M, Jin Y, et al. (2012) Kinetics and function of mesenchymal stem cells in corneal injury. *Invest Ophthalmol Vis Sci* 53: 3638–3644.
- Yao L, Li ZR, Su WR, Li YP, Lin ML, et al. (2012) Role of mesenchymal stem cells on cornea wound healing induced by acute alkali burn. *PLoS One* 7: 17.
- He J, Bazan NG, Bazan HE (2006) Alkali-induced corneal stromal melting prevention by a novel platelet-activating factor receptor antagonist. *Arch Ophthalmol* 124: 70–78.
- Chang JH, Garg NK, Lunde E, Han KY, Jain S, et al. (2012) Corneal neovascularization: an anti-VEGF therapy review. *Surv Ophthalmol* 57: 415–429.
- Cho M, Hunt TK, Hussain MZ (2001) Hydrogen peroxide stimulates macrophage vascular endothelial growth factor release. *Am J Physiol Heart Circ Physiol* 280: H2357–2363.
- Douglas MW, Kesson AM, King NJ (1994) CTL recognition of west Nile virus-infected fibroblasts is cell cycle dependent and is associated with virus-induced increases in class I MHC antigen expression. *Immunology* 82: 561–570.
- Kesson AM, Cheng Y, King NJ (2002) Regulation of immune recognition molecules by flavivirus, West Nile. *Viral Immunol* 15: 273–283.
- Pennino D, Bhavsar PK, Effner R, Avitabile S, Venn P, et al. (2013) IL-22 suppresses IFN-gamma-mediated lung inflammation in asthmatic patients. *J Allergy Clin Immunol* 131: 562–570.
- Pati S, Gerber MH, Menge TD, Wataha KA, Zhao Y, et al. (2011) Bone marrow derived mesenchymal stem cells inhibit inflammation and preserve vascular endothelial integrity in the lungs after hemorrhagic shock. *PLoS One* 6: 28.
- Liu NT, McGettrick HM, Buckley CD, Newsome P, Ed Rainger G, et al. (2013) Crosstalk Between Mesenchymal Stem Cells and Endothelial Cells Leads to Down-Regulation of Cytokine-Induced Leukocyte Recruitment. *Stem Cells* 31.
- Selmani Z, Naji A, Zidi I, Favier B, Gaiffe E, et al. (2008) Human leukocyte antigen-G5 secretion by human mesenchymal stem cells is required to suppress T lymphocyte and natural killer function and to induce CD4+CD25high-FOXP3+ regulatory T cells. *Stem Cells* 26: 212–222.
- Bahri R, Hirsch F, Josse A, Rouas-Freiss N, Bidere N, et al. (2006) Soluble HLA-G inhibits cell cycle progression in human alloreactive T lymphocytes. *J Immunol* 176: 1331–1339.
- Ghosh S, May MJ, Kopp EB (1998) NF-kappa B and Rel proteins: evolutionarily conserved mediators of immune responses. *Annu Rev Immunol* 16: 225–260.
- Kim JY, Kang JS, Kim HM, Ryu HS, Kim HS, et al. (2010) Inhibition of bone marrow-derived dendritic cell maturation by glabridin. *Int Immunopharmacol* 10: 1185–1193.
- Lee YJ, Moon MK, Hwang SM, Yoon JJ, Lee SM, et al. (2010) Anti-inflammatory effect of *Buddleja officinalis* on vascular inflammation in human umbilical vein endothelial cells. *Am J Chin Med* 38: 585–598.
- Yomogida S, Hua J, Sakamoto K, Nagaoka I (2008) Glucosamine suppresses interleukin-8 production and ICAM-1 expression by TNF-alpha-stimulated human colonic epithelial HT-29 cells. *Int J Mol Med* 22: 205–211.
- Du YY, Zhou SH, Zhou T, Su H, Pan HW, et al. (2008) Immuno-inflammatory regulation effect of mesenchymal stem cell transplantation in a rat model of myocardial infarction. *Cytotherapy* 10: 469–478.
- Zhang R, Liu Y, Yan K, Chen L, Chen XR, et al. (2013) Anti-inflammatory and immunomodulatory mechanisms of mesenchymal stem cell transplantation in experimental traumatic brain injury. *J Neuroinflammation* 10: 1742–2094.
- Han X, Lu M, Wang S, Lv D, Liu H (2012) Targeting IKK/NF-kappaB pathway reduces infiltration of inflammatory cells and apoptosis after spinal cord injury in rats. *Neurosci Lett* 511: 28–32.
- MacMaster JF, Dambach DM, Lee DB, Berry KK, Qiu Y, et al. (2003) An inhibitor of IkappaB kinase, BMS-345541, blocks endothelial cell adhesion molecule expression and reduces the severity of dextran sulfate sodium-induced colitis in mice. *Inflamm Res* 52: 508–511.

48. Choi H, Lee RH, Bazhanov N, Oh JY, Prockop DJ (2011) Anti-inflammatory protein TSG-6 secreted by activated MSCs attenuates zymosan-induced mouse peritonitis by decreasing TLR2/NF-kappaB signaling in resident macrophages. *Blood* 118: 330–338.
49. Kota DJ, Wiggins LL, Yoon N, Lee RH (2013) TSG-6 produced by hMSCs delays the onset of autoimmune diabetes by suppressing Th1 development and enhancing tolerogenicity. *Diabetes* 62: 2048–2058.
50. Letterio JJ, Roberts AB (1998) Regulation of immune responses by TGF-beta. *Annu Rev Immunol* 16: 137–161.
51. Liu J, Lu XF, Wan L, Li YP, Li SF, et al. (2004) Suppression of human peripheral blood lymphocyte proliferation by immortalized mesenchymal stem cells derived from bone marrow of Banna Minipig inbred-line. *Transplant Proc* 36: 3272–3275.
52. Flores B, von Bernhardi R (2012) Transforming growth factor beta1 modulates amyloid beta-induced glial activation through the Smad3-dependent induction of MAPK phosphatase-1. *J Alzheimers Dis* 32: 417–429.
53. Frumento G, Piazza T, Di Carlo E, Ferrini S (2006) Targeting tumor-related immunosuppression for cancer immunotherapy. *Endocr Metab Immune Disord Drug Targets* 6: 233–237.
54. Robinson CM, Shirey KA, Carlin JM (2003) Synergistic transcriptional activation of indoleamine dioxygenase by IFN-gamma and tumor necrosis factor-alpha. *J Interferon Cytokine Res* 23: 413–421.
55. Ge W, Jiang J, Arp J, Liu W, Garcia B, et al. (2010) Regulatory T-cell generation and kidney allograft tolerance induced by mesenchymal stem cells associated with indoleamine 2,3-dioxygenase expression. *Transplantation* 90: 1312–1320.
56. MacKenzie CR, Gonzalez RG, Kniep E, Roch S, Daubener W (1999) Cytokine mediated regulation of interferon-gamma-induced IDO activation. *Adv Exp Med Biol* 467: 533–539.
57. Yuan W, Collado-Hidalgo A, Yufit T, Taylor M, Varga J (1998) Modulation of cellular tryptophan metabolism in human fibroblasts by transforming growth factor-beta: selective inhibition of indoleamine 2,3-dioxygenase and tryptophanyl-tRNA synthetase gene expression. *J Cell Physiol* 177: 174–186.
58. Bell LV, Else KJ (2011) Regulation of colonic epithelial cell turnover by IDO contributes to the innate susceptibility of SCID mice to *Trichuris muris* infection. *Parasite Immunol* 33: 244–249.
59. Mailankot M, Smith D, Howell S, Wang B, Jacobberger JW, et al. (2008) Cell cycle arrest by kynurenine in lens epithelial cells. *Invest Ophthalmol Vis Sci* 49: 5466–5475.
60. Arnalich-Montiel F, Pastor S, Blazquez-Martinez A, Fernandez-Delgado J, Nistal M, et al. (2008) Adipose-derived stem cells are a source for cell therapy of the corneal stroma. *Stem Cells* 26: 570–579.