

Cite this: *RSC Adv.*, 2019, 9, 6936

Improvement of activated sludge dewatering properties using green conditioners: chitosan hydrochloride and lysozyme†

Feng Lin, Xiaolin Zhu, Yong Luo, Peiran Yu and Mengru Liu*

In this study, the effects of chitosan hydrochloride (CTSCL), lysozyme (LZM) and cationic polyacrylamide (CPAM) as conditioners on the dewatering performance of activated sludge were comparatively investigated in terms of the capillary suction time (CST), specific resistance to filtration (SRF) and water content after conditioning and subsequent dewatering. CTSCL showed nearly the same capacity to improve the sludge dewaterability as CPAM, with CTSCL and CPAM conditioning resulting in the SRF of sludge decreasing by 95.82% and 96.15%, CST decreasing by 78.22% and 84.88%, and water content of the dewatered sludge decreasing by 10.84% and 8.5%, respectively. However, LZM conditioning exhibited the best improvement in the dewatering extent, which could decrease the water content of dewatered sludge by 19.84%. In addition, the evolution of the physical properties, extracellular polymeric substance content and composition, and the sludge floc morphology were analyzed to explain the sludge conditioning mechanism. Both CTSCL and CPAM could extrude sludge surface bound water into free water, produce sludge flocs with a larger size and more surface pores and finally improve the sludge filterability. In comparison with chemical flocculants, the conditioning mechanism of LZM was distinctly different, which effectively decomposed cell walls, released the internal bound water beneficial for improving the sludge dewatering extent, while the released organic substances clogged the floc surface, and the high proportion of fine particles in the flocs resulted in poorer filtration.

Received 17th December 2018
Accepted 21st February 2019

DOI: 10.1039/c8ra10349f

rsc.li/rsc-advances

1. Introduction

With the rapid rise of sewage amounts and treatment rates, subsequent sludge treatment and disposal problems are becoming increasingly apparent. The high water content of over 95%, huge volume, and difficulties in transportation accompanied with sludge would bring about serious secondary pollution to the environment if not appropriately dealt with. Therefore, it is necessary to carry out sludge dewatering prior to sludge treatment and disposal.^{1,2}

Sludge is a heterogeneous colloidal system containing microorganisms, refractory organics and some heavy metals that form a stable suspension in water.² The microorganisms are embedded in a matrix of extracellular polymeric substances (EPS) that consists of miscellaneous organic substances such as proteins (PN), polysaccharides (PS) and humic acid.^{3–5} Both EPS and water within the EPS structure account for approximately 80% of the total sludge mass,^{6,7} which is a major obstacle hindering the volume reduction of sludge. In addition, the EPS

usually occur as highly hydrated capsules surrounding cell walls and contain many hydrophilic functional groups, such as –COOH and –OH, which can change the surface characteristics of sludge particles.^{8,9} Consequently, the presence of negative charge carried by EPS have the sludge particles to be negatively charged, thus forming a stable and electrically exclusive colloid system in which the hydrated sludge structure is maintained, and the release of water and other components such as PN, PS and heavy metals is effectively prevented.¹⁰ As a result, the separation of solid liquid in activated sludge is particularly difficult.

The rate of sludge dewatering could be improved efficiently if the sludge was regulated before dewatering. The addition of organic polymers and inorganic coagulants, such as cationic polyacrylamide (CPAM), polyferric chloride and lime, could agglomerate the fine sludge colloids into large flocs through electrical neutralization and bridging action, which was easily separated from the water.^{11–13} At present, the sludge utilization means of activated sludge are combustion to generate electricity, dunghill for soil and making building materials, so nonbiodegradable conventional conditioners may result in pollution issues, such as biological toxicity, and thereby limit the subsequent utilization of the sludge. Thus, it is imperative to explore efficient and environmentally friendly conditioners for sludge dewatering.

Green conditioners, such as natural organic polymer flocculants and enzymes, is concerned gradually in sludge dewatering

State Key Laboratory of Pulp and Paper Engineering, School of Light Industry and Engineering, South China University of Technology, Guangzhou 510640, China.
E-mail: lmr@scut.edu.cn

† Electronic supplementary information (ESI) available. See DOI: 10.1039/c8ra10349f



owing to their superiority, nontoxicity and biodegradability.¹³ Zemmouri *et al.*¹⁴ reported that natural chitosan showed the same efficiency in the field of sludge conditioning as synthetic polymer (SedCF802). However, there remains the issue of the poor solubility of chitosan in water, which is inconvenient for practical applications. Then, Huang *et al.*¹⁵ tried to synthesize a new hydrophobic cationic chitosan flocculant with better water solubility in comparison with chitosan; however, the synthetic process is so complicated that the new chitosan flocculant is not suitable for large-scale applications. Until recently, chitosan hydrochloride (CTSCL) was known as a cationic chitosan derivative without complex synthesis process, which was easily dissolved in water and possessed the advantages of chitosan.¹⁶ Currently, the flocculation performance of CTSCL has been used in the removal of humic acids from water, and its effectiveness could approach 95–100%.¹⁷ However, there are few reports on the application of CTSCL as a sludge conditioner.

Chemical conditioners commonly accelerate the removal rate of water but hardly influence the destruction of the structure of EPS,¹⁸ which was thought to play a critical role in the sludge filtering performance. Consequently, researchers have recently paid more attention to the various enzymes responsible for releasing the bound water from sludge flocs by the degradation of EPS and the lysis of biological cells.^{19,20} Chen *et al.*²¹ found that the application of compound enzymes (protease and α -amylase) disrupted EPS structure and got the dewatered sludge with higher solid content, while the reaction time of was 4 h, not convenient for practical application. Compared with the protease and amylase, lysozyme (LZM), could effectively and quickly destroy the β -1,4-glucoside bond, which connects *N*-acetylmuramic acid and *N*-acetylglucosamine in the cytoderm, and then decompose the insoluble mucopolysaccharide into a soluble peptide. These would lead to the lysis of bacteria, and finally disrupt the EPS structure.⁶ He *et al.*¹⁹ have found that LZM destroyed the microbial cell wall to result in the release of intracellular soluble substances, which had a strong potential to disintegrate activated sludge. However, sludge dewatering properties of the pulp and paper mill were investigated by Bonilla *et al.*,²² who found that both active and inactive LZM exhibited similar reinforcement of the sludge dewaterability, and the conclusion insisted on there was little difference between the conditioning mechanisms of LZM and chemical flocculants. Our new experimental discoveries about the performance of LZM during sludge conditioning contradict the latter point.

To investigate the feasibility of improving the activated sludge dewaterability on the basis of green conditioning, this paper compared the conditioning effect of CTSCL and LZM with that of CPAM using activated sludge (activated sludge collected from the secondary sedimentation tank) as the research object. In addition, the relevant conditioning mechanism in improving the sludge dewatering performance is expected to be elucidated.

2. Materials and methods

2.1 Materials

2.1.1 Sludge sample. Sludge samples were collected from the secondary sedimentation tank of Lijiao wastewater

treatment plant in Guangzhou, China, and stored at 4 °C. The main characteristics of the sludge are listed in ESI, Table S1†.

2.1.2 Chemical reagents. CPAM with a molecular weight of approximately 10–12 million was purchased from SNF Floerger. LZM was purchased from Amresco. CTSCL with a molecular weight of approximately 200 thousand was produced by Cool Chemistry of China. The reaction buffer (catalog number L9295) and micrococcus lysodeikticus cell suspension (catalog number M3770) were purchased from Sigma. Na₃PO₄ and NaCl were purchased from Guangzhou Chemical Reagent Factory of China. NaH₂PO₄ was purchased from Sinopharm Chemical Reagent Co., Ltd (China). KCl was obtained from Damao Chemical Reagent Factory of China. All the chemical reagents used were analytical grade.

2.2. Methods

2.2.1 Sludge conditioning. One hundred milliliters of the sludge sample was poured into a 250 mL beaker, and the dissolved conditioners were added using a scalar pipette. Then, the mixture was stirred at 150 rpm for 30 s and subsequently at 50 rpm for 2 min. After that, the conditioned sludge remained in the beaker for 10 min. All the tests were performed in triplicate. The dosage of different conditioners is shown in ESI, Table S2†.

2.2.2 Activity assay of LZM. The cell suspension used in the study has an absorbance at 450 nm (A_{450}) between 0.6–0.7 *versus* the reaction buffer blank. Immediately before use, a solution was prepared containing 200–400 units per mL of LZM in a cold reaction buffer (catalog number L9295). First, 800 μ L of the micrococcus cell suspension was pipetted into a cuvette as a blank one as a control, and one for each sample. Then, the cuvettes were equilibrated to 25 °C, and A_{450} was monitored until constant. Afterwards, 30 μ L of reaction buffer was added to the blank cuvette, 30 μ L of the LZM solution was added to the control cuvette, and 30 μ L of the test sample was added to the remaining cuvettes. The mixtures were immediately mixed by inversion and the decrease in A_{450} was recorded for 5 min. Finally, the maximum linear rate ($\Delta A_{450}/\text{min}$) was obtained for each of the test samples and the blank.²³

The enzyme activity (units per mL) was calculated as follows:

$$r = \frac{(\Delta A_{450}/\text{min}_{\text{test}} - \Delta A_{450}/\text{min}_{\text{blank}})d_f}{0.001 \times 0.03}$$

where d_f is the dilution factor, 0.001 is the ΔA_{450} as per unit definition, and 0.03 is the volume (in milliliters) of the enzyme solution.

2.2.3 Determination of the sludge dewaterability. The determination of the specific resistance to filtration (SRF)¹² was conducted in a Buchner funnel using a qualitative filter paper. The device used for measuring the SRF was shown in ESI, Fig. S1†, and the operation process was presented in ESI, Text S1.†

The capillary suction time (CST) was measured using a CST instrument (304 M, Triton Electronics Ltd., Dunmow, UK).

As shown in Fig. S2†, a lab-scale pressure filtration system, featured a hydraulic drive piston which could move up and down in an enclosed space, was used for sludge dewatering. The detailed operation process of the sludge deep dewatering was introduced in ESI, Text S2.†

The bound water content was analyzed according to a modified thermal analytical approach.²⁴ The sludge sample of 10 mg was first cooled from 25 °C to -25 °C at a rate of -2 °C min⁻¹ and the released heat (mJ) was recorded, assuming that all the free water was frozen at -25 °C except bound water. The sludge sample was then heated from -25 °C to 25 °C at a heating rate of +2 °C min⁻¹. And the heat uptake during phase transition of bound water (W_B) can be calculated with the following equation:

$$W_B = W_T - \Delta H / \Delta H_0$$

where W_B is the bound water content, W_T is the total water content, ΔH is the heat absorbed in melting process and ΔH_0 is the water heat of fusion (334 mJ mg⁻¹).

2.2.4 EPS characterization

2.2.4.1 EPS extraction. The soluble EPS (S-EPS), loosely bound EPS (LB-EPS) and tightly bound EPS (TB-EPS) from the sludge were separated using a series of methods that comprised centrifugation, ultrasonication, and thermal extraction.²⁵ The specific process was shown in ESI, Text S3.†

2.2.4.2 EPS analysis. The PN concentration in the extracted EPS was measured by the Coomassie brilliant blue method with bovine serum albumin (BSA) as a standard.²⁶ The PS concentration of the EPS was determined using the anthrone method with a glucose standard.²⁷ The DNA content in the S-EPS was analyzed using the modified diphenylamine method with calf thymus DNA sodium as the standard.²⁸ Then the PN, PS and DNA were analyzed using a UV/VIS spectrophotometer (TU-1080, Beijing Purkinje General Instrument, China). The accuracy of the standard curve for the three parameters reached 99.60% and pure water was used to “zero” the spectrophotometer. Also a blank test with only LZM was used to exclude the effect of LZM on PN concentration.

2.2.4.3 Three-dimensional excitation emission matrix (3D-EEM). A fluorescence spectrophotometer (F-7000, Hitachi, Japan) was used to analyze the organic matter in each layer of the EPS. The excitation (Ex) wavelengths ranged from 200 to 400 nm, and the emission (Em) wavelengths varied from 200 to 500 nm. The sampling intervals were all at 5 nm. And the scanning speed was 12 000 nm min⁻¹, with 5 nm of excitation and emission slit bandwidths.⁸ The spectrum of deionized water was regarded as the blank before the determination of all the samples, which were then deducted from all data used for plotting. Specially, the spectrum of LZM solution was regarded as another blank before the determination of the LZM-conditioned samples.

2.2.5 Floc morphology. A particle size analyzer (MS3000, Malvern, UK) was employed to measure the median diameter (D_v [50]) of the sludge particle size. The sludge samples were prepared by freeze-drying, and the sludge morphology was studied with a scanning electron microscope (SEM) (EVO 18, ZEISS, Germany).

2.2.6 Zeta potential. A laser diffraction instrument (Zetasizer Nano ZS90, Malvern, UK) was used to measure the zeta potential of the sludge supernatant.

2.3 Statistical analysis

Statistical analysis was carried out using the software Origin Pro 9.0 64 bit (Origin Pro Lab Corp., Northampton, MA, USA).

3. Results and discussion

3.1 Effects of the different conditioners on sludge dewatering performance

For a long time, both SRF and CST, which are measures of the difficulty level of filtration, were commonly used to evaluate the sludge dewaterability in sewage treatment plants or research labs.¹⁸ Generally, lower SRF and CST mean better filtration performance.

The change of the indexes with the increasing dosage of the different conditioners is shown in Fig. 1a–c. SRF, CST and water content simultaneously reached the minimum at the level 5 with the dosage of 2.5 mg g⁻¹ dry solid (DS) CPAM, 15 mg g⁻¹ DS CTSCl and 4.8 × 10⁶ U g⁻¹ DS LZM with the activity of 1.6 × 10⁴ U mg⁻¹, respectively. CTSCl showed nearly the same capacity to improve the sludge dewatering performance as CPAM, with CTSCl and CPAM conditioning resulting in the sludge SRF decreasing by 95.82% and 96.15%, CST decreasing by 78.22% and 84.88%, and water content of the dewatered sludge decreasing by 10.84% and 8.5%, respectively. In contrast, as shown in Fig. 1a–c, although both SRF and CST of the sludge conditioned with LZM were evidently higher than those of the others, the resulting water content of the dewatered sludge reached the lowest value of 58.54%, which could be ascribed to the destruction of microbial cell walls and the release of intracellular water into free water.²¹ The reason why the filtration performance was unsatisfactory after LZM conditioning is still unclear and needs further investigation.

As a synthetic flocculant based on natural polymers, CTSCl showed considerable potency to condition the sludge as well as CPAM. In combination with its biodegradability, CTSCl is expected to be a promising substitute for conventional chemical flocculants if its cost can be reduced in future. In addition, LZM also exhibited unique superiority in improving the degree of sludge dewatering that could not be achieved with traditional chemical flocculants.

3.2 Effects of the different conditioners on particle size and zeta potential of sludge

As shown in Fig. 2a, both organic macromolecular flocculants, CPAM and CTSCl, displayed similar D_v [50] variation of the conditioned sludge particles when the conditioner dosage was increased, with maximum values of 227.81 μm and 105 μm, respectively. Because of the strong bridging effect of high molecular weight polymer, CPAM with a molecular weight of approximately 10–12 million was more beneficial for the formation of large flocs.²⁹ In comparison, CTSCl with a molecular weight of approximately 200 thousand resulted in the weaker bridging effect, thereby producing relatively small particle size of sludge. In contrast, the D_v [50] remained approximately constant with increasing LZM dosage, far smaller than that of the sludge conditioned with polymeric flocculants. It was inferred that the poor filterability of the sludge conditioned with LZM was related to the high proportion of fine particle retention in the flocs, accompanied by the larger total specific surface area and more surface bound water, consistent with research by Raynaud *et al.*²⁸

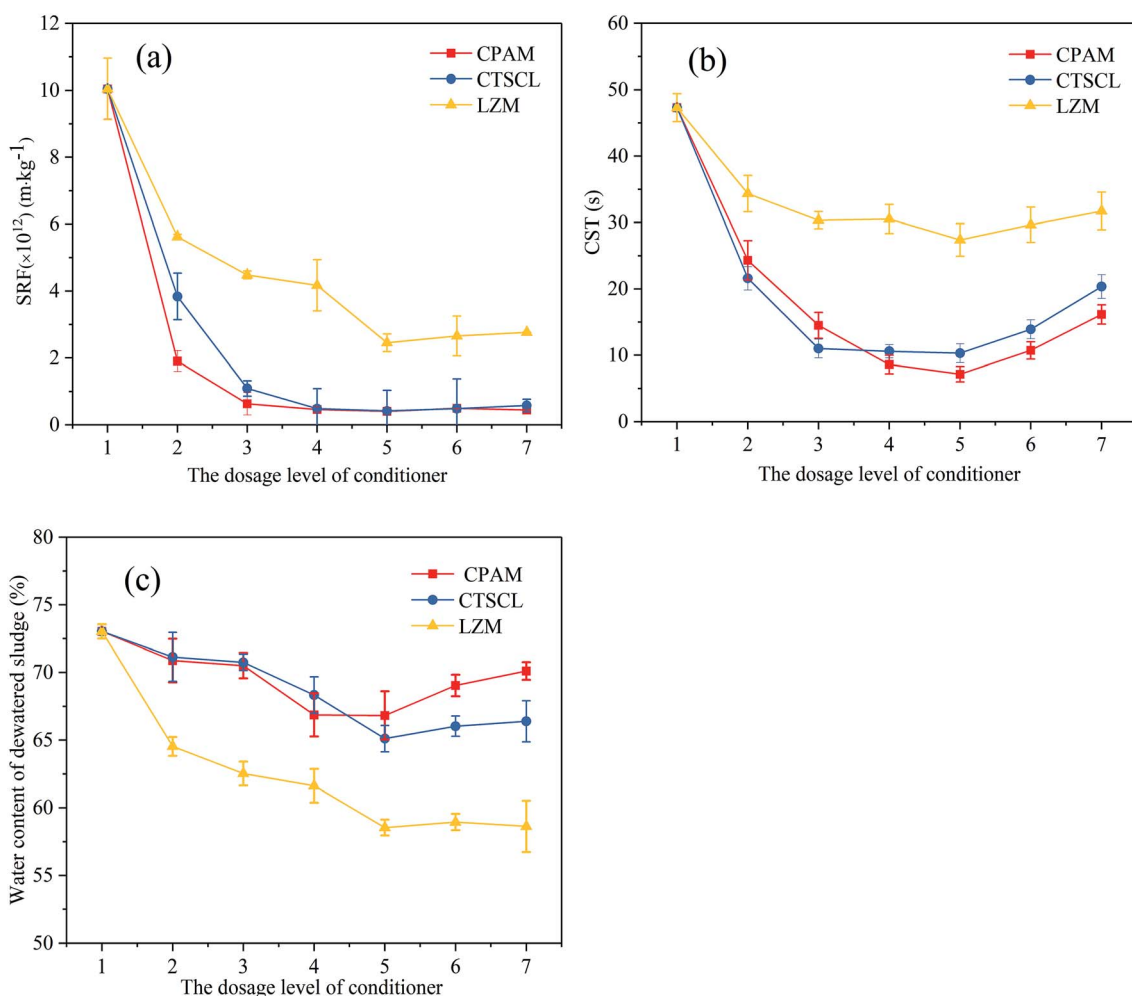


Fig. 1 Effects of the different conditioners on sludge dewatering performance (a) SRF; (b) CST; (c) water content of the dewatered sludge.

Generally, activated sludge colloidal particles are negatively charged due to anionic functional groups, such as carboxyl, hydroxyl and phosphate groups.^{3,9} According to the traditional Derjaguin–Landau–Verwey–Overbeek (DLVO) theory,³⁰ with the loss of negative surface charge and increase in zeta potential,

the sludge flocs would be in a position to aggregate, settle down rapidly, and be dewatered more readily. As shown in Fig. 2b, there was an upward trend of the zeta potential value from -14.3 mV to -10.5 mV after conditioning by CPAM and to -8.6 mV by CTSL, respectively. Notably, these observations

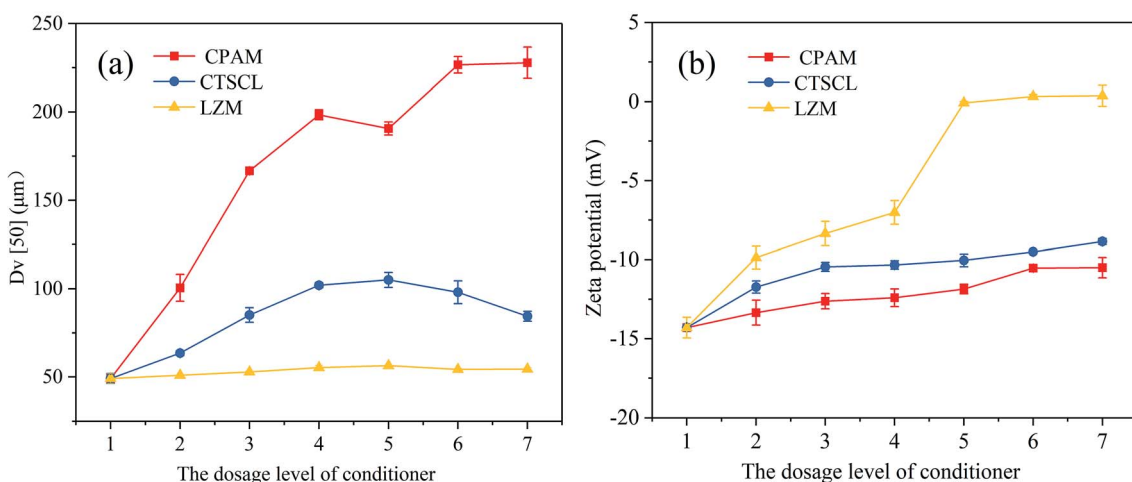


Fig. 2 Effects of CPAM, CTSL and LZM dosage on (a) $D_v [50]$ and (b) zeta potential of sludge.

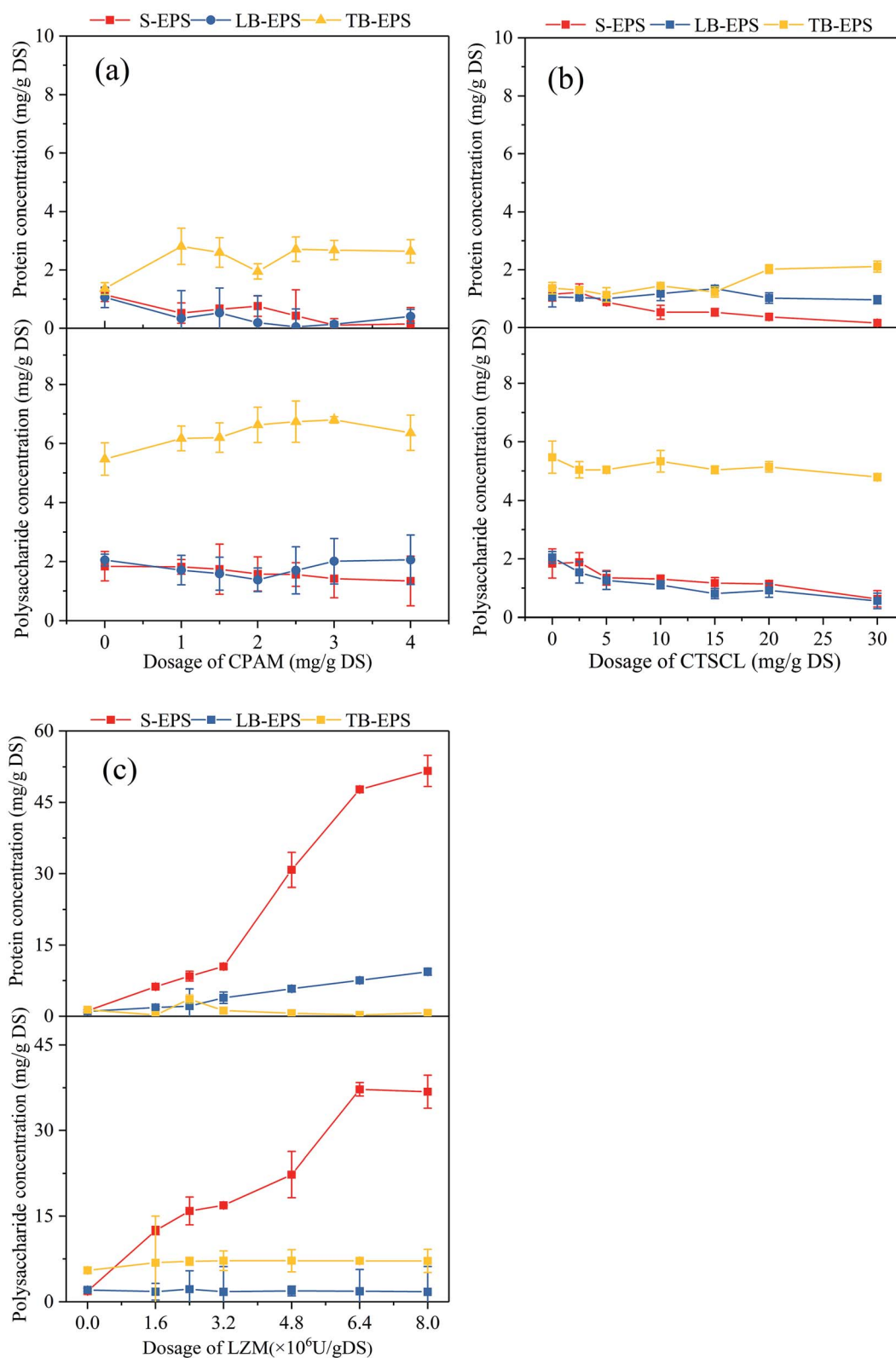


Fig. 3 Effects of (a) CPAM, (b) CTSL and (c) LZM dosage on the PN and PS concentration of the different fractions of EPS.

were inconsistent with the results of particle size, which might be ascribed to the higher dosage of CTSL (6-fold of that of CPAM), and the higher density of positive charge after CTSL conditioning than that of CPAM conditioning, thus slightly

enhancing the electrostatic neutralization effect.³¹ The above results also confirmed these organic polymer flocculants conditioned sludge and gave rise to aggregate mainly by means of the bridging action, using long chain-like molecular

structure to form larger flocs, combined with a small contribution from electrostatic neutralization.

In sharp contrast, a significant shift in the zeta potential from -14.3 mV to 0.37 mV was observed along with the increase dosage of LZM from 0 to 8×10^6 U g⁻¹ DS. A possible explanation was after the destruction of cell walls and EPS structure by LZM conditioning, the cationic amino group contained in the PN molecule neutralized parts of the negative charges on the sludge surface, thus leading to the aggregation of sludge particles and the increase of zeta potential.³² However, the destruction of EPS structure also weakened the aggregation of sludge particles, consequently the D_v [50] was far smaller than that of the sludge conditioned with polymeric flocculants as shown in Fig. 2a. In combination with the optimum dewaterability in Fig. 1a–c was obtained at the dosage of 4.8×10^6 U g⁻¹ DS, corresponding to the zeta potential of -0.08 mV, and the result was in agreement with the literature, which discovered the best dewatering performance of activated sludge occurred at the zeta potential close to 0 mV (-0.4 ± 0.1 mV) after Fe(II)-S₂O₈²⁻ ozonation under 80 °C.³⁰ Therefore, the contribution of electric neutralization could not be ignored with regards to LZM in improving the sludge dewaterability.

3.3 Effects of the different conditioners on chemical characteristics and sludge morphologies

3.3.1 EPS analysis. The chemical composition and spatial distribution of the EPS had a dominant effect on the bio-flocculation, and even on the settling and dewatering performance of activated sludge.³³ Typically, the release of EPS and intracellular materials was beneficial for reducing the water content and enhancing sludge dewaterability as the conversion of bound water into free water.³⁴ As exhibited in Fig. 3a and b, the concentrations of PN and PS remained stable when treated with different dosages of CPAM and CTSL. In combination with the results of Section 3.1 that the water content of dewatered sludge decreased slightly after separate CPAM and CTSL conditioning, there was no evidence that the polymeric flocculants had any influence on the biochemical properties of the

sludge, with the changes in the biopolymer concentration was within 1 mg g⁻¹ DS.²⁹

By comparison, the PN concentration rose quickly to 51.64 mg g⁻¹ DS from 1.15 mg g⁻¹ DS after LZM conditioning as shown in Fig. 3c, and the PS concentration boosted to 37.22 mg g⁻¹ DS from 1.84 mg g⁻¹ DS in the S-EPS. From Fig. 4, it can be noticed that the DNA content increased and the bound water content decreased. All the experimental data confirmed that the cell walls were indeed destroyed after LZM conditioning, followed by the release of the substances inside the cells. On the one hand, amino acids with positive charge in the PN contained aliphatic and aromatic side chains including alanine, phenylalanine and tryptophan, which played a critical role in the hydrophobicity of the sludge surface.³⁵ On the other hand, the PS contained negatively charged hydrophilic groups like carboxyl groups, which exerted an adverse influence on the dewatering performance of sludge. As the concentration of PN was more than that of PS,³² the dewaterability of the sludge after LZM conditioning was accordingly improved.

3.3.2 3D-EEM analysis. 3D-EEM method is an extremely impressive and alternative tool that has been widely used to represent natural organic matter.³⁶ As CPAM and CTSL had no influence on the amounts of PN and PS, further research on the distributions of protein-like substances in the different fractions of EPS was conducted by the 3D-EEM method aimed at the sludge conditioned by LZM; the results were compared with those when CTSL conditioning was used. Fig. 5 shows that two main fluorescent peaks occurred in the different fractions of EPS, including peak A (Ex/Em = $280/335$), tryptophan-like proteins, and peak B (Ex/Em = $225/340$), aromatic proteins.³⁷

As shown in Table 1, with the rising dosage of CTSL, the intensities of tryptophan-like and aromatic proteins in the EPS had few clear changes, corresponding to the almost constant level of the PN concentration in EPS. The intensity of tryptophan-like proteins in S-EPS dramatically rose to 3935.45 from 199.3 after LZM conditioning in Table 2, in comparison to that in LB-EPS and TB-EPS which ascended from 93.05 to 844.25 and 661.9 to 2236.45 , respectively. It was noted that the fluorescence intensity of tryptophan-like proteins in the TB-EPS after LZM conditioning was

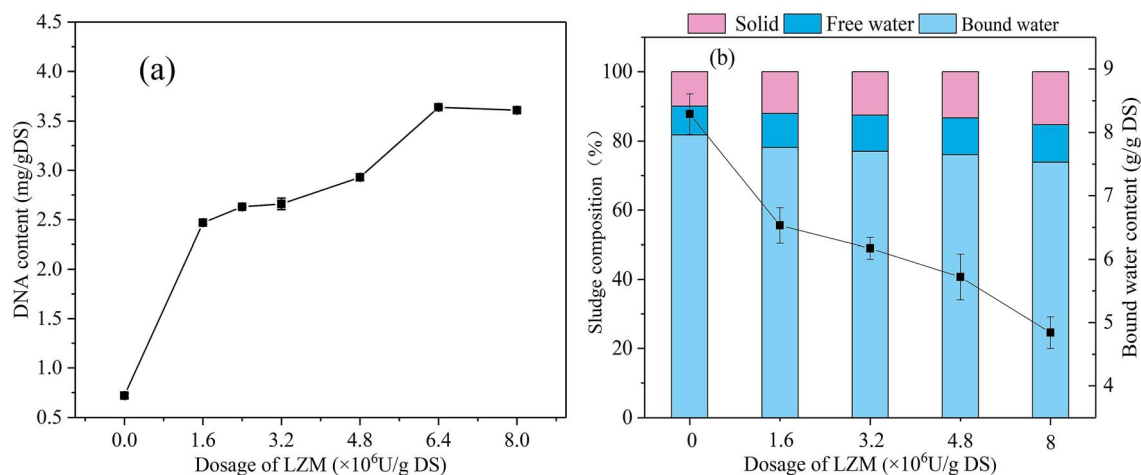


Fig. 4 Effects of LZM dosage on sludge (a) DNA and (b) bound water content.

much higher than that after CTSCl conditioning in Fig. 5, while the PN concentration in the TB-EPS were between those of sludge conditioned by LZM and CTSCl in Fig. 3. This is because EPS contained various kinds of PN with the luminophores and non-luminophores, while 3D-EEM can only detect the fluorescent functional groups in EPS and cannot quantitatively analyze and compare them with the total PN concentration.³⁸

After a comprehensive analysis of Fig. 3c and Table 2, it could be inferred that the breakdown of cell walls after LZM conditioning not only released the bound water, which was beneficial for improving the dewatering performance, but also released organic substances. That is why both the SRF and CST of the sludge conditioned with LZM were higher than those of the sludge conditioned with chemical

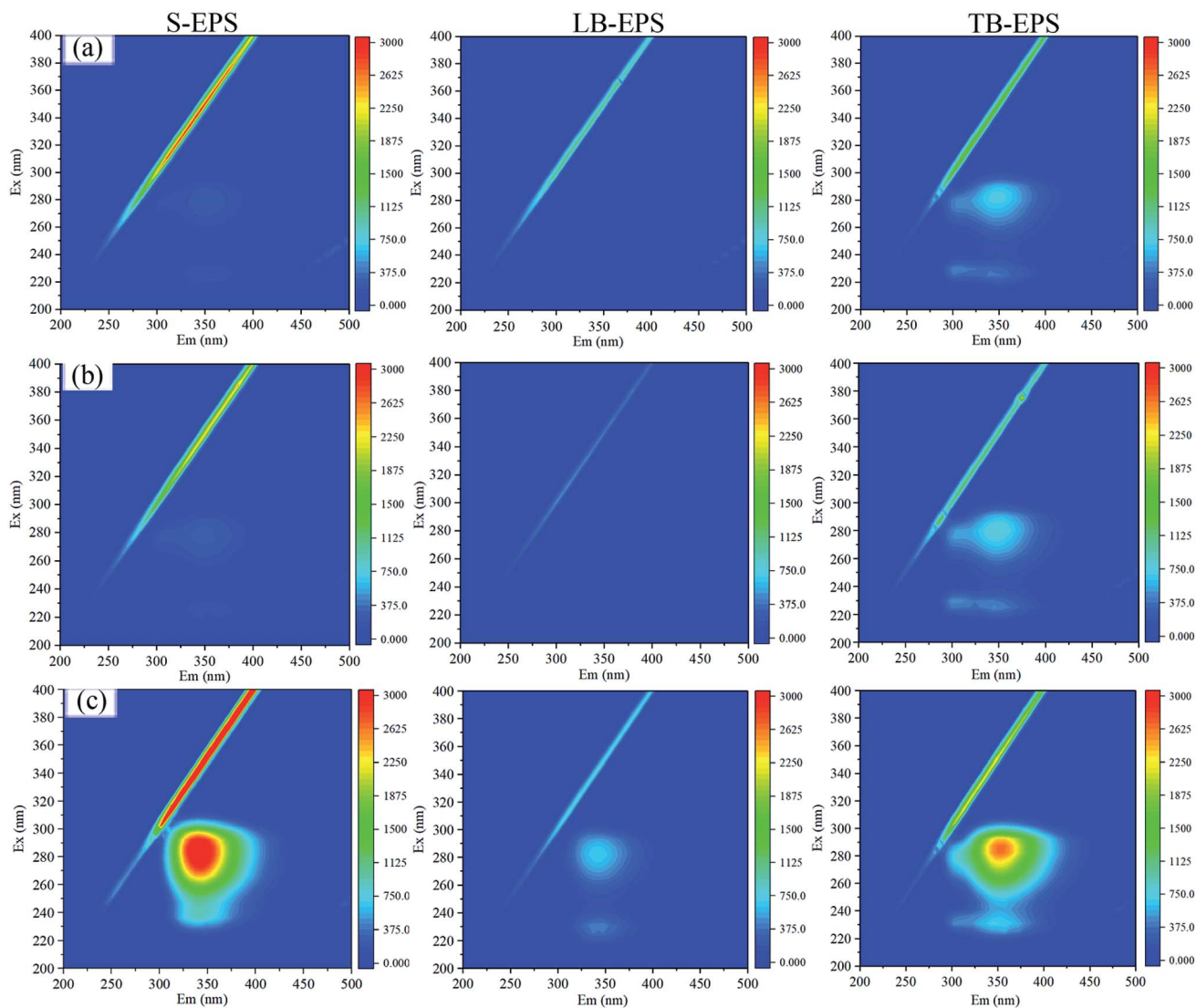


Fig. 5 Influence of the different conditioners on EEM profiles of the different fractions of EPS: (a) raw sludge; (b) 15 mg g⁻¹ DS CTSCl; (c) 4.8 × 10⁶ U g⁻¹ DS LZM (with S-EPS, LB-EPS and TB-EPS samples diluted by 20 times).

Table 1 Influence of CTSCl conditioning on the intensities of the fluorescent peaks in the different fractions of EPS

Dosage (mg g ⁻¹ DS)	S-EPS		LB-EPS		TB-EPS	
	Tryptophan protein	Aromatic protein	Tryptophan protein	Aromatic protein	Tryptophan protein	Aromatic protein
0	199.30	136.00	93.05	64.19	661.90	404.50
2.5	211.70	176.00	68.35	44.86	613.30	395.40
15	251.20	169.7	60.29	23.33	707.60	414.90
30	260.70	176.00	72.08	38.87	790.00	484.20

Table 2 Influence of LZM conditioning on the intensities of the fluorescent peaks in the different fractions of EPS

Dosage level ($\times 10^6$ U g^{-1} DS)	S-EPS		LB-EPS		TB-EPS	
	Tryptophan protein	Aromatic protein	Tryptophan protein	Aromatic protein	Tryptophan protein	Aromatic protein
0	199.30	176.00	93.05	64.19	661.90	404.50
1.6	208.64	166.83	91.56	58.77	1703.76	479.23
4.8	3279.26	203.31	675.56	55.41	2201.45	507.11
8	3935.45	225.71	844.25	62.65	2236.45	539.21

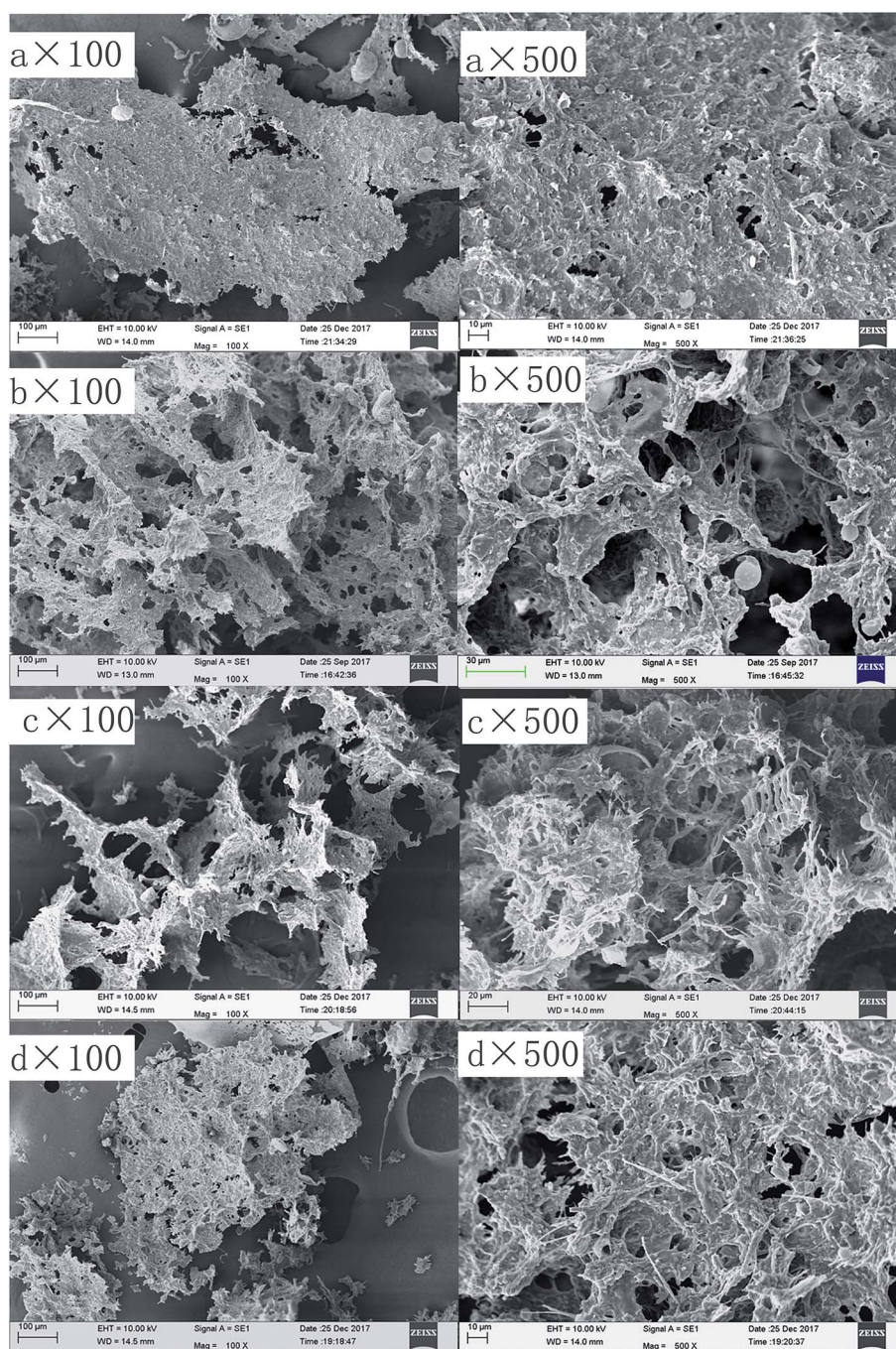


Fig. 6 SEM images of the sludge treated in various ways: (a) raw sludge; (b) sludge conditioned with 2.5 mg g^{-1} DS CPAM; (c) sludge conditioned with 15 mg g^{-1} DS CTSLC; (d) sludge conditioned with $4.8 \times 10^6 \text{ U g}^{-1}$ DS LZM.

conditioners, while the water content of the sludge cake reached the lowest value.

3.3.3 SEM analysis. SEM analysis was used to further probe into the surface micromorphology and structure of the sludge treated by different conditioners as shown in Fig. 6. Since the floc structure of the raw sludge was loosely packed, there was little support force after it was freeze-dried. In contrast, the raw sludge without conditioning in Fig. 6a was arranged in a lamellar structure, with a relatively smooth surface and non-porous structure. When comparing Fig. 6b with Fig. 6c, it can be noticed that the sludge conditioned with CPAM and CTSCl had much in common, and both exhibited a pronounced sense of three-dimensional structures and exposed more surface pores, which provided more channels to release water and thus improved the sludge filtration performance.³⁹ Also, the resulting structures were in compliance with the fact that the sludge conditioning with organic flocculants was mainly achieved through bridging with adjacent colloids. As depicted in Fig. 6d, the three-dimensional sense of the sludge structure after being conditioned with LZM was not as notable compared with the others, the structure was even a bit too flat. Furthermore, it seemed that some of the outflow of intracellular material clogged the pores on the floc surface as a consequence of the cell rupture, thus resulting in the poor drainage, and that might be another reason why the filtering performance got worse after LZM conditioning.

4. Conclusions

CTSCl showed a similar effect on the sludge dewatering performance as CPAM, with CTSCl and CPAM decreasing the water content by 10.84% and 8.5%, respectively, which was mostly due to the bridging mechanism that resulted in the increase of the particle size of the sludge flocs, thus enhancing the filterability and dewaterability. Also, CTSCl demonstrated its potential application in sludge conditioning and could be considered as an ideal substitute for CPAM. LZM exhibited its unique superiority in improving the degree of sludge dewatering that could not be achieved with traditional chemical flocculants, which led to a 19.84% decrease in the water content of dewatered sludge. Unlike the conditioning mechanism of chemical flocculants, LZM conditioning effectively broke down cell walls of the microbial bacteria, and released the bound water beneficial for improving the dewatering performance, while the released organic substances clogged the floc surface and the high proportion of fine particles in the flocs resulted in poorer filtration. All the above results were confirmed by the comparison of the sludge microstructure and microtopography before and after the conditioning.

Conflicts of interest

There are no conflicts to declare.

Acknowledgements

This study was supported by the Science and Technology Planning Project of Guangdong Province, China

(2014B090901038 and 2016A020221011), and the Fundamental Research Funds for the Central Universities (2017MS073).

References

- 1 K. K. Xiao, Y. Chen, X. Jiang and Y. Zhou, *Chemosphere*, 2017, **170**, 233–241.
- 2 G. X. You, P. F. Wang, J. Hou, C. Wang, Y. Xu, L. Z. Miao, B. W. Lv, Y. Y. Yang, Z. L. Liu and F. Zhang, *Water Res.*, 2017, **118**, 93–103.
- 3 J. S. Zhang, Y. G. Xue, N. Eshtiaghi, X. H. Dai, W. Q. Tao and Z. Li, *Water Res.*, 2017, **116**, 34–43.
- 4 Q. Yang, J. Yi, K. Luo, X. L. Jing, X. M. Li, Y. Liu and G. M. Zeng, *Process Saf. Environ. Prot.*, 2013, **91**, 521–526.
- 5 Y. Q. Wu, Y. H. Jiang, G. J. Ke and Y. J. Liu, *Radiat. Phys. Chem.*, 2017, **130**, 164–170.
- 6 G. X. You, J. Hou, P. F. Wang, Y. Xu, C. Wang, L. Z. Miao, B. W. Lv, Y. Y. Yang and H. Luo, *Environ. Res.*, 2016, **151**, 698–705.
- 7 W. J. Zhang, P. Yang, X. Y. Yang, Z. Chen and D. S. Wang, *Bioresour. Technol.*, 2015, **181**, 247–253.
- 8 W. Chen, X. H. Gao, H. Xu, Y. Cai and J. F. Cui, *Chemosphere*, 2017, **170**, 196–206.
- 9 B. Y. Xiao, C. Liu, J. X. Liu and X. S. Guo, *Bioresour. Technol.*, 2015, **196**, 109–115.
- 10 C. Colombo, G. Palumbo, J. Z. He, R. Pinton and S. Cesco, *J. Soils Sediments*, 2014, **14**, 538–548.
- 11 R. S. Mo, S. S. Huang, W. C. Dai, J. L. Liang and S. Y. Sun, *Chem. Eng. J.*, 2015, **269**, 391–398.
- 12 M. Q. Niu, W. J. Zhang, D. S. Wang, Y. Chen and R. L. Chen, *Bioresour. Technol.*, 2013, **144**, 337–343.
- 13 S. M. Koh and J. B. Dixon, *Appl. Clay Sci.*, 2001, **18**, 111–122.
- 14 H. Zemmouri, N. Mameri and H. Lounici, *Water Sci. Technol.*, 2015, **71**, 810–816.
- 15 P. Huang, X. W. Zhao and L. Ye, *J. Macromol. Sci., Part B: Phys.*, 2016, **55**, 299–309.
- 16 J. Xiao and Q. Zhou, *Natural Polymer Flocculant*, Chemical Industry Press, 2005.
- 17 S. Bratskaya, S. Schwarz and D. Chervonetsky, *Water Res.*, 2004, **38**, 2955–2961.
- 18 Y. Lu, G. Y. Zheng, W. Z. Wu, C. H. Cui and L. X. Zhou, *Sep. Purif. Technol.*, 2017, **176**, 243–251.
- 19 J. G. He, X. D. Xin, W. Qiu, J. Zhang, Z. D. Wen and J. Tang, *Bioresour. Technol.*, 2014, **170**, 108–114.
- 20 B. R. Wu, X. L. Chai and Y. C. Zhao, *Bioprocess Biosyst. Eng.*, 2016, **39**, 627–639.
- 21 Z. Chen, W. J. Zhang, D. S. Wang, T. Ma and R. Y. Bai, *Water Res.*, 2015, **83**, 367–376.
- 22 S. Bonilla, H. Tran and D. G. Allen, *Water Res.*, 2015, **68**, 692–700.
- 23 D. M. Chipman and N. Sharon, *Science*, 1969, **165**, 454–465.
- 24 N. Katsiris and A. Kouzeli-Katsiri, *Water Res.*, 1987, **21**, 1319–1327.
- 25 X. S. Guo, J. X. Liu and B. Y. Xiao, *J. Biotechnol.*, 2014, **188**, 130–135.
- 26 M. M. Bradford, *Anal. Biochem.*, 1976, **72**, 248–254.

- 27 K. Raunkjær, T. Hvitved-Jacobsen and P. H. Nielsen, *Water Res.*, 1994, **28**, 251–262.
- 28 M. Raynaud, J. Vaxelaire, J. Olivier, E. Dieudéfaugel and J. C. Baudez, *Water Res.*, 2012, **46**, 4448–4456.
- 29 H. F. Wang, H. J. Wang, H. Hu and R. J. Zeng, *RSC Adv.*, 2017, **7**, 30274–30282.
- 30 G. Y. Zhen, X. Q. Lu, B. Y. Wang, Y. C. Zhao, X. L. Chai, D. J. Niu, A. H. Zhao, Y. Y. Li, Y. Song and X. Y. Cao, *Bioresour. Technol.*, 2012, **124**, 29–36.
- 31 R. I. S. Gill and T. M. Herrington, *Colloids Surf.*, 1986, **22**, 51–76.
- 32 B. Q. Liao, D. G. Allen, I. G. Droppo, G. G. Leppard and S. N. Liss, *Water Res.*, 2001, **35**, 339–350.
- 33 H. Wei, J. Ren, A. M. Li and H. Yang, *Chem. Eng. J.*, 2018, **349**, 737–747.
- 34 L. F. Wang, L. L. Wang, W. W. Li, D. Q. He, H. Jiang, X. D. Ye, H. P. Yuan, N. W. Zhu and H. Q. Yu, *Chem. Eng. Sci.*, 2014, **116**, 228–234.
- 35 K. You, W. Di, J. Liu and Y. S. Yuan, *Adv. Mater. Res.*, 2014, **1023**, 262–265.
- 36 Y. Dai, S. Huang, J. Liang, S. Zhang, S. Sun, T. Bing and Q. Xu, *Chem. Eng. J.*, 2017, **321**, 123–138.
- 37 R. K. Henderson, A. Baker, K. R. Murphy, A. Hambly, R. M. Stuetz and S. J. Khan, *Water Res.*, 2009, **43**, 863–881.
- 38 M. Muller, D. M. B. P. Milori, S. Deleris, J. P. Steyer and Y. Dudal, *Waste Manage.*, 2011, **31**, 1916–1923.
- 39 Z. Chen, W. J. Zhang, D. S. Wang, T. Ma, R. Y. Bai and D. Z. Yu, *Water Res.*, 2016, **103**, 170–181.