




REVIEW

Effects of phospho- and calcitropic hormones on electrolyte transport in the proximal tubule [version 1; referees: 2 approved]

Justin J. Lee^{1,2}, Allein Plain^{1,2}, Megan R. Beggs^{1,2}, Henrik Dimke³,
R. Todd Alexander ^{1,2,4}

¹Department of Physiology, University of Alberta, Edmonton, Canada

²The Women and Children’s Health Research Institute, Edmonton, Canada

³Department of Cardiovascular and Renal Research, Institute of Molecular Medicine, University of Southern Denmark, Odense, Denmark

⁴Department of Pediatrics, Edmonton Clinic Health Academy, University of Alberta, Edmonton, Canada

V1 **First published:** 03 Oct 2017, 6(F1000 Faculty Rev):1797 (doi: 10.12688/f1000research.12097.1)
Latest published: 03 Oct 2017, 6(F1000 Faculty Rev):1797 (doi: 10.12688/f1000research.12097.1)

Abstract

Calcium and phosphate are critical for a myriad of physiological and cellular processes within the organism. Consequently, plasma levels of calcium and phosphate are tightly regulated. This occurs through the combined effects of the phospho- and calcitropic hormones, parathyroid hormone (PTH), active vitamin D₃, and fibroblast growth factor 23 (FGF23). The organs central to this are the kidneys, intestine, and bone. In the kidney, the proximal tubule reabsorbs the majority of filtered calcium and phosphate, which amounts to more than 60% and 90%, respectively. The basic molecular mechanisms responsible for phosphate reclamation are well described, and emerging work is delineating the molecular identity of the paracellular shunt wherein calcium permeates the proximal tubular epithelium. Significant experimental work has delineated the molecular effects of PTH and FGF23 on these processes as well as their regulation of active vitamin D₃ synthesis in this nephron segment. The integrative effects of both phospho- and calcitropic hormones on proximal tubular solute transport and subsequently whole body calcium-phosphate balance thus have been further complicated. Here, we first review the molecular mechanisms of calcium and phosphate reabsorption from the proximal tubule and how they are influenced by the phospho- and calcitropic hormones acting on this segment and then consider the implications on both renal calcium and phosphate handling as well as whole body mineral balance.

Open Peer Review

Referee Status:  

	Invited Referees	
	1	2
version 1 published 03 Oct 2017		

F1000 Faculty Reviews are commissioned from members of the prestigious F1000 Faculty. In order to make these reviews as comprehensive and accessible as possible, peer review takes place before publication; the referees are listed below, but their reports are not formally published.

- 1 **Orson Moe**, University of Texas Southwestern Medical Center, USA
University of Texas Southwestern Medical Center, USA
- 2 **Olivier Bonny**, Lausanne University Hospital, Switzerland
University of Lausanne, Switzerland

Discuss this article

Comments (0)

Corresponding author: R. Todd Alexander (todd2@ualberta.ca)

Author roles: **Lee JJ:** Conceptualization, Funding Acquisition, Writing – Review & Editing; **Plain A:** Conceptualization, Writing – Original Draft Preparation; **Beggs MR:** Conceptualization, Writing – Original Draft Preparation, Writing – Review & Editing; **Dimke H:** Conceptualization, Writing – Review & Editing; **Alexander RT:** Conceptualization, Writing – Review & Editing

Competing interests: The authors declare that they have no competing interests.

How to cite this article: Lee JJ, Plain A, Beggs MR *et al.* **Effects of phospho- and calciotropic hormones on electrolyte transport in the proximal tubule [version 1; referees: 2 approved]** *F1000Research* 2017, 6(F1000 Faculty Rev):1797 (doi: [10.12688/f1000research.12097.1](https://doi.org/10.12688/f1000research.12097.1))

Copyright: © 2017 Lee JJ *et al.* This is an open access article distributed under the terms of the [Creative Commons Attribution Licence](https://creativecommons.org/licenses/by/4.0/), which permits unrestricted use, distribution, and reproduction in any medium, provided the original work is properly cited.

Grant information: Work in the Alexander laboratory is funded by grants from the Women and Children's Health Research Institute, which is supported by the Stollery Children's Hospital Foundation, the Canadian Institutes of Health Research (MOP 136891), the National Sciences and Engineering Research Council, and the Kidney Foundation of Canada. HD is supported by Fabrikant Vilhelm Pedersen og Hustrus Mindelegat, the Novo Nordisk Foundation, the Carlsberg Foundation, the A.P. Møller Foundation, the Beckett Foundation, the Lundbeck Foundation, and the Danish Medical Research Council. MRB is supported by a Vanier Canada Graduate Scholarship.

The funders had no role in study design, data collection and analysis, decision to publish, or preparation of the manuscript.

First published: 03 Oct 2017, 6(F1000 Faculty Rev):1797 (doi: [10.12688/f1000research.12097.1](https://doi.org/10.12688/f1000research.12097.1))

Introduction

The kidneys play a critical role in maintaining electrolyte balance, including both calcium and phosphate. They accomplish this by adjusting the urinary excretion of these minerals, thereby amending the amount in blood. In particular, the proximal tubule (PT) reabsorbs approximately 70% of filtered calcium and 90% of filtered phosphate ions¹. Failure to properly regulate PT reabsorption leads to abnormal calcium and phosphate homeostasis, which may manifest as neuromuscular, cardiovascular, or gastrointestinal symptoms². The molecular mechanisms mediating calcium and phosphate reabsorption in the PT, as well as the endocrine regulation of these processes, have been extensively studied. The endocrine factors involved in calcium and phosphate homeostasis are known as calciotropic and phosphotropic hormones, respectively. These hormones include parathyroid hormone (PTH), 1,25-dihydroxyvitamin D₃ (that is, active vitamin D), and fibroblast growth factor 23 (FGF23). Previous review articles have primarily focused on the individual effects of PTH, active vitamin D, and FGF23 on either calcium or phosphate transport in the kidneys, and some have suggested an interconnection between the two pathways^{1,3-6}. However, emerging work demonstrates that PTH and FGF23 each have distinct effects on both phosphate and calcium homeostasis. They should thus be considered calciophosphotropic hormones, a term we will use for the remainder of this article. Here, we briefly review calcium and phosphate reabsorption and their dependence on sodium transport in the PT and then dissect the role of PTH and FGF23 on these processes.

Proximal tubule

The PT is the initial segment of the nephron wherein transport occurs. It is responsible for reabsorbing the majority of water and solutes that filter into this tubular segment from the glomerulus. Anatomically, the PT is located in the renal cortex and can be divided into (i) the proximal convoluted tubule (PCT) and (ii) the proximal straight tubule (PST). The PT can be further subdivided into segments S1, S2, and S3 on the basis of molecular ultrastructure and expression profiles⁷⁻¹⁰. The PCT is comprised of S1 and part of S2, whereas the PST contains the remainder of the S2 segment as well as the S3 segment^{7,8}. The majority of sodium, bicarbonate, and phosphate reabsorption from the PT occurs in the PCT, owing to the greater expression of select sodium-coupled cotransporters, larger microvilli surface area, and denser mitochondrial population. In contrast, calcium reabsorption occurs in the distal part of the PT due to a favourable electrochemical gradient there.

Proximal tubular function

The transport of solutes across the PT epithelium occurs via both transcellular and paracellular pathways. The transcellular pathway is generally a unidirectional, active process whereby substrates that are reabsorbed in the PT enter the epithelial cell across the apical membrane and subsequently are extruded across the basolateral membrane. The paracellular pathway in the PT is either a passive or secondarily active bidirectional process permitted by tight-junction proteins called claudins¹¹. Transport via the paracellular pathway is determined by the transepithelial electrochemical gradient and the permeability of the tight junction.

About 65% of transepithelial sodium reabsorption in the nephron occurs in the PT, and two thirds of it occurs via the transcellular pathway in a process coupled to bicarbonate reclamation^{12,13}. As such, significant paracellular sodium reabsorption also takes place in this segment. Calcium reabsorption from the PT is primarily mediated by the paracellular pathway, while phosphate reabsorption occurs via the transcellular pathway^{14,15}. Both calcium and phosphate reabsorption in the PT are dependent to some degree on the transepithelial transport of sodium.

The proximal tubule, a target of calciophosphotropic hormones

Electrolyte transport in the PT is regulated by multiple factors, including the calciophosphotropic hormones PTH and FGF23. These hormones interdependently regulate one another through the PTH-active vitamin D–FGF23 axes (Figure 1)¹⁶. The regulatory mechanisms within these axes are complex and beyond the scope of this review. (The reader is referred to several recent reviews covering this topic¹⁶⁻¹⁹.) Here, we focus on the effects of PTH, active vitamin D, and FGF23 on calcium and phosphate transport processes in the PT.

PTH is produced in the parathyroid gland and released when systemic calcium levels are reduced below the physiological set point. PTH increases serum calcium levels by directly increasing calcium resorption from bone and reabsorption from kidneys, while it indirectly stimulates intestinal absorption by increasing the synthesis of active vitamin D in the kidneys²⁰⁻²³. Concomitantly, PTH inhibits phosphate reabsorption in the PT, thereby increasing phosphate excretion into urine²⁴. These actions on the PT are mediated by its direct interaction with the G protein-coupled type 1 PTH receptors (PTHrRs) expressed on both apical and basolateral membranes²⁵. The major effects of PTH binding to the PTHR in the PT are mediated by protein kinase A (PKA) and protein kinase C (PKC). These protein kinases are stimulated by the G_s- and G_{q/11}-protein pathways, respectively²⁶. It is noteworthy that the apical PTHR preferentially signals through the PKC pathway²⁵. Ultimately, these signalling pathways modulate both the expression and membrane localization of transport proteins involved in the reabsorption of sodium, calcium, and phosphate across the PT epithelium.

PTH also increases plasma levels of active vitamin D via a direct effect on PT epithelial cells¹⁷. The enzyme responsible for hydroxylating 25-hydroxyvitamin D₃ at the 1 α -position, CYP27B1 or 1 α -hydroxylase, is expressed in the PT and is upregulated by PTH²⁷. Though traditionally thought of as a calciotropic hormone, active vitamin D is a phospho- and calciotropic hormone that increases both serum calcium and phosphate levels by stimulating their intestinal absorption²¹. It also suppresses the release of PTH by downregulating *PTH* gene expression and increasing calcium-sensing receptor (CaSR) expression in the parathyroid gland^{28,29}. Even though active vitamin D directly increases the expression of proteins involved in calcium reabsorption in the distal nephron, it is unclear whether it exerts a direct effect on electrolyte handling in the PT which is independent of its secondary effects on other hormones.

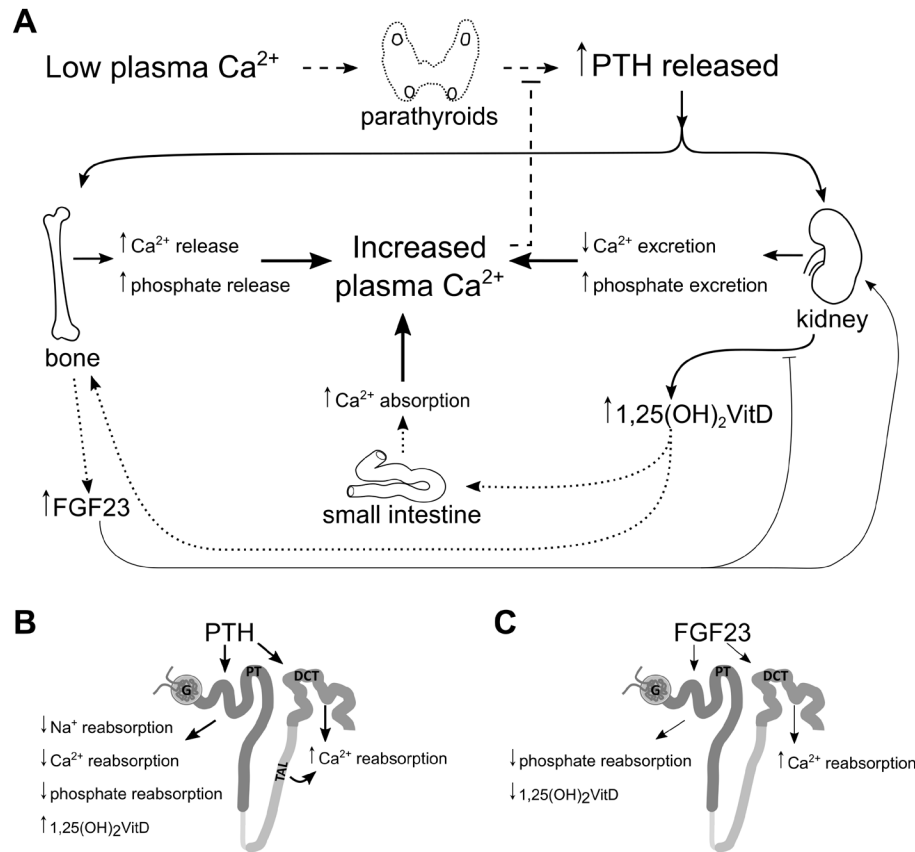


Figure 1. Regulation of calcium and phosphate by parathyroid hormone (PTH), 1,25-dihydroxyvitamin D_3 (active vitamin D), and fibroblast growth factor 23 (FGF23). (A) Low plasma calcium stimulates release of PTH from the parathyroid glands. PTH stimulates resorption of bone, releasing calcium and phosphate into the plasma. In the kidney, PTH increases urinary calcium reabsorption and phosphate excretion. (B) PTH-dependent active calcium reabsorption takes place in the distal nephron but, in the proximal tubule (PT), stimulates 1α -hydroxylase to convert 25-hydroxyvitamin D_3 into active vitamin D and reduces the reabsorption of sodium, calcium, and phosphate. Active vitamin D increases calcium absorption from the small intestine and stimulates FGF23 secretion from bone. (C) FGF23 acts as a negative feedback modulator of activated vitamin D activation and increases distal nephron calcium reabsorption while decreasing phosphate reabsorption from PT.

FGF23 is a 251-amino acid peptide hormone synthesized and released from osteocytes and osteoblasts in response to elevations in systemic active vitamin D or phosphate or both^{16,19}. The primary action of FGF23 is to reduce PT phosphate reabsorption via binding to specific FGF receptors (FGFRs), including 1, 3, and 4, which are expressed on the basolateral membrane throughout the PT^{30,31}. Downstream signalling after FGFR activation reduces phosphate transporter expression and apical membrane localization in the PT. This signalling also depends on its cofactor, klotho, to activate the downstream signalling pathways. Though primarily thought of as a phosphotropic hormone, FGF23 is also a calciotropic hormone. With klotho as its cofactor, FGF23 directly modulates calcium reabsorption from the distal convoluted tubule (DCT)^{32,33}. Of note, PTH stimulates FGF23 release in rodents^{29,34,35}, while in contrast to PTH, FGF23 indirectly suppresses the 1-hydroxylation of 25-dihydroxyvitamin D_3 ¹⁷. Thus, like PTH and active vitamin D, FGF23 regulates both calcium and phosphate homeostasis and therefore can be considered a calciophosphotropic hormone^{6,36}.

Calcium reabsorption from the proximal tubule

The kidney efficiently reabsorbs 98–99% of filtered calcium ions. More than 60% of this reabsorption occurs in the PT, which is largely driven by diffusion through the paracellular shunt^{37–39}. Micropuncture studies in mammals show a parallel relationship between PT calcium reabsorption and sodium reabsorption, which does not dissociate under a variety of circumstances, including the administration of PTH, acetazolamide, furosemide, or hydrochlorothiazide or with the induction of acute and chronic metabolic acidosis^{40–43}. In addition, an active transcellular pathway is proposed to account for less than 20% of calcium reabsorption from this segment^{37,44}. Consistent with this, micropuncture experiments performed in the absence of a transepithelial potential difference found that not all calcium transport in the distal PT was passive and paracellular¹⁴. Moreover, similar studies in the PST (S2 and S3 regions) of rabbit kidney demonstrate significant calcium transport that is independent of sodium transport, implying the presence of a transcellular calcium reabsorption pathway in the later portion of the PT^{45,46}. The molecular constituents of this

pathway remain to be elucidated. Towards this goal, an *in vitro* study using the L-type calcium channel blocker, nifedipine, abolished calcium flux in a rabbit PT cell model, implying the presence of functional apical L-type calcium channels in the PT⁴⁷. In addition, cation-permeable transient receptor potential channel 1 (TRPC1) has been localized to the apical membrane of PT cells *in vitro* and *in vivo*^{47,48}. These studies support the presence of a transcellular pathway for calcium reabsorption in the PST; however, further study is required to delineate the molecular constituents.

Calcium transport in the proximal tubule is coupled to sodium and water transport

Calcium reabsorption in the PT is highly dependent on sodium transport. The kidneys filter more than 500 g of sodium and 180 L of water daily, while approximately 4 g of filtered sodium and 1–2 L of water is excreted in the urine⁴⁹. The PT reabsorbs about two thirds of the filtered sodium and water. Sodium reabsorption in the PT is primarily mediated by an active transcellular pathway (Figure 2A)⁵⁰. Active reabsorption of sodium creates a small, albeit significant, osmotic gradient for water, which is reabsorbed trans- and paracellularly through the water-selective channel aquaporin-1 and tight-junction pore claudin-2, respectively⁵¹. The majority of sodium transport across the apical membrane occurs via the sodium proton exchanger isoform 3 (NHE3), encoded by the *Slc9a3* gene, which is expressed along the PCT. Animals with a targeted deletion of *Slc9a3* have a significant reduction in sodium and water reabsorption from the PT and display hypotension^{13,52–54}. Though contributing minimally to sodium reabsorption from the PT, other apical membrane sodium-coupled cotransporters, including sodium-glucose, sodium-phosphate, and sodium–amino acid cotransporters, are expressed in this segment. These transporters account for less than 5% of total transcellular sodium reabsorption in the PT; thus, only those involved in phosphate transport will be discussed here.

Sodium is also reabsorbed from the PT through the paracellular pathway. The PT is very leaky, displaying a transepithelial resistance (TER) of 5–7 $\Omega\cdot\text{cm}^{21}$. This leakiness is conferred by a tight-junction family of proteins called claudins. Claudin-2, -10a, and -17 are expressed in this nephron segment^{11,55,56}. Claudin-2 forms a cation-selective, water-permeable pore, permitting paracellular diffusion of sodium, calcium, and water down their electrochemical gradients while restricting the diffusion of larger macromolecules⁵⁷. In the early PCT (S1), the transepithelial potential difference is lumen-negative, generated by the electrogenic sodium-glucose cotransporter (SGLT2)⁵⁸. Although this electrogenically favours paracellular cation secretion, this is overcome by the large amount of active sodium and consequent water reabsorption described above. The movement of water across the PT, when it occurs through the paracellular pore, can in turn carry other ions, including calcium, even against their respective transepithelial electrochemical

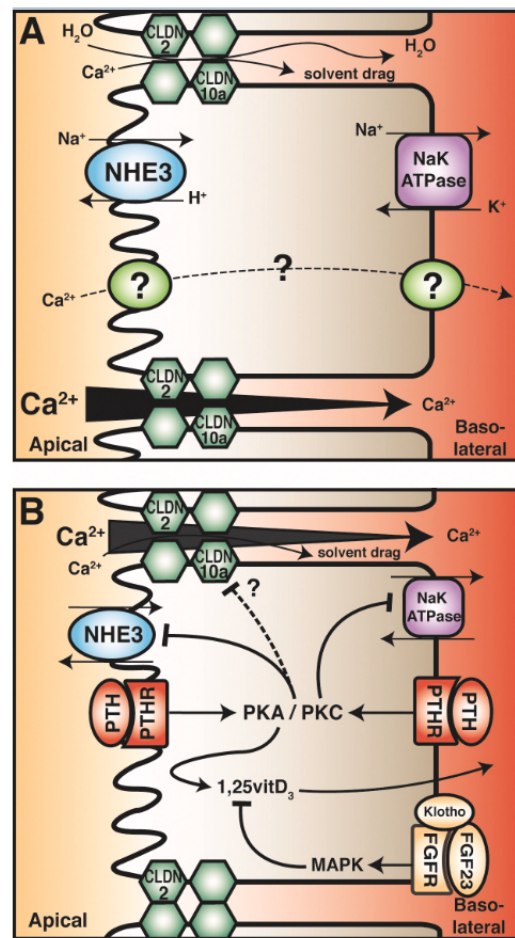


Figure 2. Proximal tubule (PT) calcium (Ca^{2+}) reabsorption. (A) Calcium reabsorption from the PT occurs primarily by a paracellular route, likely mediated by claudin-2 (CLDN2). This is dependent on transcellular sodium reabsorption, driven by the sodium proton exchanger (NHE3) and sodium potassium ATPases. The reabsorption of sodium generates an osmotic gradient for water reabsorption, which in turn drags other solutes (including calcium) in a process known as solvent drag (top junction). In the late PT, the calcium concentration gradient favours reabsorption (from apical to basolateral) as the majority of sodium and water reabsorption occurs in the early PT (bottom junction). The transcellular calcium reabsorption pathway, present in late PT, is illustrated as a dashed line. (B) Parathyroid hormone (PTH) in the PT decreases calcium reabsorption by attenuating its driving force. PTH in both the tubular fluid and the blood binds its receptor (PTHr), which is expressed on both apical and basolateral membranes. This activates the downstream messengers protein kinase A (PKA) and protein kinase C (PKC). Note that apical PTHr preferentially activates PKC. Both pathways inhibit NHE3 activity and reduce abundance, but only PKC inhibits Na^+/K^+ ATPase activity. PTH also reduces tight-junction permeability in the PT and enhances active vitamin D_3 synthesis. In contrast, fibroblast growth factor 23 (FGF23) reduces active vitamin D_3 levels.

gradient, in a process known as solvent drag (Figure 2). This is supported by experiments using pharmacological blockade of NHE3 in a PT cell model and NHE3 knockout mice that display increased urinary calcium excretion and reduced calcium transport across intestinal epithelia⁵⁹⁻⁶¹. In contrast, the transepithelial potential difference across the late PT is lumen-positive, which is the result of reclamation of chloride ions and bicarbonate⁵⁸. This electrochemical gradient thus favours the reabsorption of sodium and calcium⁵⁸. As sodium and water are reabsorbed in the earlier portions of the PT, calcium in the tubular fluid becomes concentrated, generating a transepithelial chemical gradient that favours paracellular calcium reabsorption^{37,40,41}. These mechanisms in concert generate a transepithelial electrochemical gradient from lumen-to-blood that drives calcium reabsorption. Taken together, the majority of PT calcium reabsorption occurs via a paracellular pathway.

Regulation of sodium and calcium transport in the proximal tubule

PTH increases serum calcium in part by increasing the reabsorption of filtered calcium from the renal tubule, thereby reducing calcium excretion into urine. Paradoxically, micropuncture studies in the dog revealed that PTH reduces sodium, fluid, and calcium reabsorption from the PT, even though it still lowered urinary calcium excretion^{43,62}. This observation is reconciled by findings of enhanced calcium reabsorption in the later segments of the tubule following PTH administration⁶²⁻⁶⁴. Microperfusion of rabbit cortical thick ascending limb (TAL) in the presence of PTH led to an almost fivefold increase in calcium flux across the segment with similar findings in mice^{65,66}. PTH also affects calcium reabsorption through a transcellular calcium transport pathway in the distal convoluted tubule, which relies on the calcium-permeable transient receptor potential V5 channel (TRPV5)⁶⁷⁻⁶⁹. Consistent with this, PTH activates TRPV5 by increasing the open probability of the channel, membrane abundance, and total expression⁶⁸⁻⁷⁰. A secondary effect of PTH on the DCT is to increase the amount of TRPV5 indirectly by increasing circulating active vitamin D levels, as this hormone also enhances calcium reclamation in the DCT^{71,72}.

A number of studies on animals demonstrate that the major effect of PTH on the PT is to inhibit sodium reabsorption, resulting in a natriuresis (Figure 2B)^{42,43,62,73}. Various *in vitro* expression studies using opossum kidney (OK) cells found that acute and chronic incubation with PTH downregulates *Slc9a3* at the transcriptional level, which is abolished by PKA inhibition (a downstream effector of PTH binding its receptor PTHR)⁷⁴⁻⁷⁶. These studies also revealed that PTH decreases NHE3 membrane abundance^{75,77}. These cell culture studies are supported by *in vivo* work on PTH-infused rats that display significantly reduced renal NHE3 expression⁷⁸⁻⁸⁰. Furthermore, microperfusion of rat PT after chronic PTH exposure found reduced transepithelial sodium transport along with increased sodium and water excretion^{78,79}. Thus, PTH directly inhibits NHE3-dependent transport. The actions of PTH on NHE3 are mediated by the phosphorylation of NHE3 at residue Ser605 by PKA⁸¹. Although PKC activation results in NHE3 inhibition, this effect is mediated through an unknown mechanism that does not appear to require direct NHE3 phosphorylation⁸². Both PKA and PKC are thought to interact with NHE3 through

its PDZ domain-containing linker protein, the sodium-hydrogen exchanger regulatory factor 1 (NHERF-1); however, the precise mode of interaction is incompletely understood^{83,84}. Furthermore, the molecular details of PTH-mediated transcriptional regulation have not been fully elucidated⁷⁴.

PTH also inhibits sodium/potassium ATPase activity in the PT, which would secondarily inhibit the apical sodium-dependent cotransporter fundamental to transcellular sodium reabsorption (Figure 2B). This occurs through the activation of PKC via a G_{9/11} protein-coupled pathway after PTHR binding⁸⁵⁻⁸⁷. Activated PKC translocates to the basolateral membrane and phosphorylates the alpha subunit of the sodium/potassium ATPase, inhibiting its activity^{88,89}. Given the abovementioned role of NHE3 and the sodium/potassium ATPase in paracellular calcium reabsorption, their inhibition by PTH would inhibit sodium reabsorption from the PT, which would decrease paracellular calcium reabsorption. This seems in direct contrast to the primary role of PTH to increase serum calcium levels. The reasons for this remain unclear. A previous attempt to reconcile this observation suggested that NHE3 inhibition alkalizes the tubular fluid via reduced hydrogen secretion, thereby reducing reabsorption of bicarbonate^{76,78}. This hypothesis is supported by a micropuncture study, where acute administration of PTH increased distal delivery of bicarbonate, leading to an alkaline urine⁹⁰. Since TRPV5, which is expressed in the distal nephron, is activated by alkaline pH, this could increase distal transcellular calcium reabsorption through TRPV5^{76,78,91}. Micropuncture data further demonstrate the uncoupling of sodium and calcium transport in the distal nephron^{42,43,62}. However, direct *in vivo* measurements of tubular pH after PTH administration and the consequent effect on calcium reabsorption in the distal tubule have not been made.

Alternatively, PTH-mediated inhibition of PT sodium reabsorption might affect urinary calcium excretion by altering the glomerular filtration rate (GFR). Multiple *in vivo* studies found that exogenous PTH administration decreases GFR⁹²⁻⁹⁴. Consistent with this, patients with primary hyperparathyroidism show significantly reduced GFR⁹⁵. An explanation for this observation is that PTH stimulates tubuloglomerular feedback by increasing the distal delivery of chloride. The majority of chloride reclamation from the PT occurs through the paracellular pathway, driven by the transepithelial electrochemical gradient⁹⁶. PTH-mediated inhibition of sodium reabsorption in the early PT would result in a more positive lumen, which in turn would favour retention of chloride and result in increased distal delivery of chloride. This would stimulate tubuloglomerular feedback, thereby decreasing GFR⁹⁷. The PTH effect on GFR would not directly affect PT calcium transport. However, it would reduce the filtered calcium load and the amount of calcium in the ultrafiltrate. This would decrease the amount of calcium needed to be reabsorbed by active calcium transport in the distal nephron, thereby maximizing calcium reabsorption. Further studies are required to confirm this hypothesis.

The effect of calciophosphotropic hormones on ion transport in the cortical TAL⁹⁸⁻¹⁰⁰ and the distal convoluted tubule^{67-69,71,101} have been studied. However, there is a paucity of recent studies looking

at the PT. In particular, the potential regulation of tight-junction permeability by calciophosphotropic hormones, including PTH, has received little attention. Functional data suggest a relationship between PTH signalling and altered paracellular transport in the PT¹⁰². PTH administration to rats acutely decreased paracellular solute reabsorption from the PT¹⁰². This is further supported by a microperfusion study that showed reduced water-driven paracellular solute transport (that is, reduced solvent drag) across rabbit PCTs after infusion of cyclic AMP (a downstream second messenger of PTH-PTHr activation)¹⁰³. Consistent with the abovementioned studies, inhibition of NHE3 in an intestinal cell culture model resulted in increased TER consistent with reduced tight-junction permeability¹⁰⁴ as TER across a leaky epithelium is predominantly a reflection of paracellular ion permeability. Together, these studies suggest that PTH inhibits paracellular transport in the PT by decreasing tight-junction permeability, which likely also affects the permeation of calcium, although this has not been specifically tested. We are unaware of attempts to delineate the molecular components involved in regulation of paracellular permeability following PTH application. Further research is required to do so and to assess the effect of PTH on the transcellular calcium absorption pathway in the late PT.

FGF23 also affects PT solute transport by acting on sodium-phosphate cotransporters. However, given the relatively small amount of sodium reabsorbed via this pathway, this primarily decreases phosphate rather than sodium transport and therefore is discussed below. Currently, we are unaware of data demonstrating an effect of FGF23 on transcellular sodium transport or tight-junction permeability in the PT. It should be kept in mind, however, that FGF23 participates in calcium homeostasis through the enhancement of active vitamin D inactivation as well as by enhancing distal tubular calcium reabsorption through TRPV5³⁴.

There is evidence of calcium sensing by the PT. The CaSR detects elevated serum calcium. It signals through a $G_{q/11}$ protein-coupled pathway inhibiting PTH release from the parathyroid gland and decreases calcium reabsorption from the TAL^{105,106}. Several studies have reported CaSR expression in the brush border membrane of PT epithelial cells^{107,108}, but another study contradicts this observation¹⁰⁰. A recent study using both monoclonal and polyclonal antibodies against the CaSR found a low level of expression in PT¹⁰⁹. Regardless, a functional study using conditionally immortalized PT epithelial cells isolated from the urine of healthy subjects revealed activation of the $G_{q/11}$ pathway with exposure to increased extracellular calcium as well as its allosteric agonist NPS-R568¹¹⁰. The physiological role of a CaSR in the PT appears to be to antagonize the inhibitory effects of PTH in PT transport processes. In microperfused late PT (S3 region) and OK cells, the addition of the CaSR agonists gadolinium and NPS R467 abolishes the phosphaturic effects of PTH¹⁰⁸. Further microperfusion and micropuncture experiments on rat PT demonstrate a link between CaSR activation and NHE3. Increased fluid absorption and intracellular pH were seen in response to high luminal calcium or NPS-R568, an effect that was absent in CaSR knockout animals¹¹¹. Together, these studies support the presence of a functional calcium-sensing mechanism in the PT, which antagonizes PTHr activation.

Human diseases with altered proximal tubular calcium transport

Global PT dysfunction results in glycosuria, aminoaciduria, low-molecular-weight proteinuria and renal tubular acidosis. This constellation of symptoms is called the Fanconi syndrome. Perhaps not surprisingly, the Fanconi syndrome often includes alteration in vitamin D metabolism¹¹². Dent's disease and the oculo-renal syndrome of Lowe's disease are typically accompanied by hypercalciuria and nephrocalcinosis^{113,114}. These diseases are the result of mutations in *CLCN5* or *OCRL1*^{115,116}. The former gene encodes a transmembrane proton-chloride exchanger (also present intracellularly), and the latter a lipid phosphatase involved in the shuttling of lipid between endomembrane compartments^{117,118}. Why these gene defects result in a PT calcium phenotype is unknown and is an area of research that requires exploring. Given the possible involvement of *CLCN5* in luminal chloride and proton balance, it is possible that loss-of-function mutation in the *CLCN5* gene alters the transepithelial electrical gradient in the PT, thus perturbing various solute transport processes¹¹⁷. However, further studies employing cell and animal models of *CLCN5* and *OCRL1* mutations will help delineate the pathophysiological mechanism of these syndromes.

Phosphate transport in proximal tubule

Phosphate reabsorption in the proximal tubule

Phosphate is vital to bone mineralization, maintaining cellular energy stores, and to cell signalling. The kidneys are essential to maintaining systemic phosphate levels, as the majority of ingested phosphate is absorbed from the intestine. Less than 1% of the body's phosphorus exists in a solubilized form as either dihydrogen phosphate ($H_2PO_4^{1-}$) or mono-hydrogen phosphate (HPO_4^{2-}), and the pH determines the fraction of each. The remaining fractions are stored either as part of hydroxyapatite in bone (~85%) or intracellularly (~15%)¹¹⁹. In adults, the kidneys filter approximately 200 mmoles of phosphate daily, and about 90% of it is reabsorbed back into the bloodstream. Of this filtered fraction, 90% is reabsorbed from the PT.

In the PT, phosphate reabsorption occurs primarily via a transcellular pathway (Figure 3). Paracellular phosphate reabsorption from this tubule segment has been described as insignificant in comparison with transcellular reabsorption^{4,5,120,121}. Sodium-coupled phosphate cotransporters NaPi-IIa, NaPi-IIc, and PiT-2 mediate the cellular entry of filtered phosphate ions from the lumen⁵. Apical phosphate entry is facilitated by secondary active transport of sodium, the electrochemical gradient of which is maintained by the basolateral sodium/potassium ATPase. The transport capacity of the PT for phosphate is determined primarily by the abundance of sodium-coupled phosphate transporters, which is due to the steep electrical gradient across the apical membrane (about -70 mV) and a low cytosolic sodium concentration. Expression studies in rodent PT reveal that NaPi-IIa expression is high in the early PT and decreases along the length of this nephron segment, but the fact that NaPi-IIc and PiT-2 are expressed throughout the PT highlights the importance of the early PT to phosphate reabsorption^{122,123}. The NaPi-II transporter family shows preference for divalent phosphate (HPO_4^{2-}). NaPi-IIa is electrogenic (couples 3 Na^+ to 1 phosphate), and

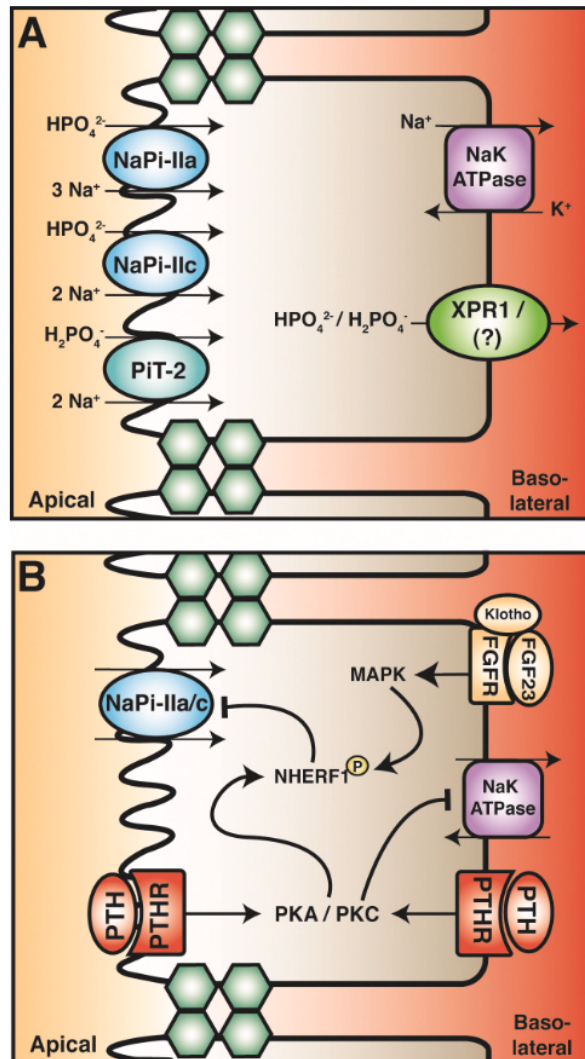


Figure 3. Proximal tubule (PT) phosphate reabsorption. (A) Phosphate reabsorption in the PT is mediated by the transcellular pathway. Apical entry occurs through the sodium-phosphate exchanger family (NaPi) subtypes IIa and IIc and sodium-dependent phosphate transporter 2 (PiT-2). The stoichiometric ratio and preference of phosphate species are depicted. The basolateral extrusion of phosphate may occur through the xenotropic and polytropic retroviral receptor (XPR1). (B) Parathyroid hormone (PTH) and fibroblast growth factor 23 (FGF23) both attenuate phosphate reabsorption in the PT by inhibiting NaPi-II cotransporters. PTH in the tubular fluid and blood activates protein kinase A and C (PKA and PKC). These kinases phosphorylate the PDZ domain-containing scaffold protein sodium hydrogen exchanger regulatory factor 1 (NHERF1), leading to internalization and degradation of NaPi-IIa. FGF23 in the blood binds to its receptor complex (which includes the cofactor, klotho). This leads to the activation of the mitogen-activated protein kinase (MAPK) pathway, resulting in phosphorylation of NHERF1. This signal cascade also decreases NaPi-IIa abundance. How PTH and FGF affect NaPi-IIc is currently unknown.

NaPi-IIc is electroneutral (couples 2 Na⁺ to 1 phosphate)^{124–126}. In contrast, PiT-2 has greater affinity for monovalent phosphate ions (H₂PO₄⁻) and is electrogenic^{127,128}. Genetic knockout studies in mice demonstrate that NaPi-IIa constitutes about 70% of phosphate reabsorption in the PT in this species^{129–131}. Loss-of-function mutations in the NaPi-IIa cotransporter (*SLC34A1*) in humans, in contrast to rodents, causes renal calcification and generalized proximal-tubular dysfunction (that is, the Fanconi syndrome) rather than specific phosphate disturbances^{132,133}. Moreover, NaPi-IIc in the human kidney likely contributes substantially to phosphate reabsorption, as patients with hereditary hypophosphatemic rickets with hypercalciuria—genetic mutations in the NaPi-IIc (*SLC34A3* gene)—show renal wasting of phosphate due to impaired NaPi-IIc function^{134,135}. After apical entry, subsequent intracellular diffusion and basolateral extrusion of phosphate complete reabsorption across PT epithelia¹²². Although little is known about the basolateral extrusion mechanism, a recent nephron-specific knockout of the xenotropic and polytropic retroviral receptor gene (*Xpr1*) in mice resulted in hypophosphatemia and hyperphosphaturia, suggesting a role for this transporter in renal tubular phosphate reabsorption¹³⁶. The protein product of *Xpr1* also shares a sequence homology similar to that of a phosphate extrusion transporter in plants (PHO1). Additional experiments need to be carried out to confirm its role in transcellular phosphate reabsorption.

Regulation of phosphate transport in the proximal tubules

PTH and FGF23 regulate phosphate reabsorption in the PT, which in turn regulates plasma phosphate levels. Active vitamin D increases serum phosphate via enhanced intestinal absorption and potentially via increased PT reabsorption^{137,138}. However, limited direct evidence of the effect on the PT and confounding effects of PTH and FGF23 complicates this interpretation¹. PTH attenuates renal phosphate reabsorption by reducing the membrane abundance of NaPi-IIa, NaPi-IIc, and PiT-2 cotransporters (Figure 3)^{139–141}. PTH acutely decreases the abundance of apical NaPi-IIa cotransporters by stimulating endocytosis and ultimately their degradation^{142,143}. PTH induces NaPi-IIa endocytosis through a complex intracellular pathway, which has been reviewed previously^{4,5}. In short, the PTH-PTH1R interaction results in phosphorylation of PDZ domain-containing proteins—including NHERF-1—via activation of PKA and PKC, the signaling pathways that inhibit NHE3. NHERF-1 anchors NaPi-IIa to the cytoskeleton and its phosphorylation releases the transporter, permitting endocytosis and degradation in response to PTH^{144–147}. Patients with mutations in NHERF-1 (*SLC9A3R1*) display phosphaturia and nephrolithiasis but have otherwise normal PT function^{148,149}. Interestingly, the mutations are not in the PDZ domain. Instead, these NHERF-1 mutants when expressed *in vitro* confer enhanced PTH-induced cAMP generation and inhibit phosphate transport, suggesting that NHERF-1 is a key component in PTH-mediated phosphaturic effects¹⁴⁹. PTH is also implicated in the internalization of NaPi-IIc; however, it is not subsequently degraded^{140,141}. The molecular pathway

whereby NaPi-IIc is downregulated is currently unknown. Nevertheless, like its effect on calcium handling, PTH decreases phosphate reabsorption in the PT. However, unlike calcium, where the distal tubule compensates for calcium loss in PT, the distal nephron has limited ability to reabsorb phosphate. Consequently, elevated PTH induces hyperphosphaturia and hypophosphatemia—symptoms commonly observed in patients with primary hyperparathyroidism¹⁵⁰.

Osteocytes and osteoblasts produce FGF23 in response to an increase in plasma phosphate levels and in response to active vitamin D (Figure 1). FGF23 decreases serum phosphate levels, primarily by reducing phosphate reabsorption from the PT and by reducing intestinal phosphate reabsorption through the inactivation of active vitamin D. In the kidney, FGF23 stimulates the internalization and subsequent degradation of NaPi-IIa and NaPi-IIc cotransporters by phosphorylation of NHERF-1 in a process similar to PTH (Figure 3B)^{33,151,152}. This occurs through mitogen-activated protein kinase (MAPK) and serum/glucocorticoid-regulated kinase-1 (SGK-1) signalling pathways that are activated by FGFR 1, 3, and 4^{153–157}. Unlike PTH, the FGF23-FGFR signalling pathway also downregulates transcription and translation of NaPi-IIa and NaPi-IIc cotransporters, contributing to a decrease in abundance of proteins in the PT^{33,158,159}. Moreover, PTH-induced endocytosis of NaPi-IIa is abolished by inhibition of the MAPK pathway, suggesting a functional crosstalk mechanism between PTH and FGF23 signalling pathways in the PT¹⁶⁰. Thus, the physiological actions of PTH on phosphate excretion and consequent reductions in serum phosphate level are complemented by the action of FGF23.

Direct phosphate sensing is another mechanism by which phosphate transport may be regulated in the PT. A phosphate-sensing mechanism has been observed in cell culture where increased extracellular phosphate activates the MAPK pathway¹⁶¹. This has also been observed in other cell lines, including human embryonic kidney 293 cells^{154,162} where increased extracellular phosphate activates the MAPK pathway that FGF23 stimulates, without altering expression of FGF, FGFR, or klotho¹⁵⁴. This finding is not surprising when we consider the functional role of FGF23. As a phosphaturic hormone, FGF23 is released in response to high serum phosphate levels. Consequently, FGF23 signals the PT to attenuate the reabsorption of phosphate through NaPi-II cotransporters, inducing phosphate excretion. Therefore, it is likely that increased extracellular phosphate stimulates the same signalling pathway activated by FGF23. However, work remains to confirm this, including exploring the effects of high extracellular phosphate on MAPK signalling *in vivo*, as well as whether phosphate directly regulates gene expression, trafficking, or activity (or a combination of these) of known phosphate transporters in PT.

Integration of parathyroid hormone and fibroblast growth factor 23 signalling in the proximal tubule

It is evident that PTH and FGF23 have distinct effects in the PT. Both PTH and FGF23 decrease phosphate reabsorption. The mechanism by which PTH and FGF23 attenuate phosphate

reabsorption is similar. Both lead to phosphorylation of NHERF-1, resulting in internalization and degradation of NaPi-IIa^{33,145–147,152}. This raises the possibility that there is molecular crosstalk between the PTH and FGF23 signalling pathways^{4,163}. Although PKA and PKC seem to be the predominant signalling mechanisms for PTH, they also activate the MAPK pathway, which is activated by FGF23 binding the FGFR^{160,164,165}. Interestingly, the downstream effects of PTH (that is, internalization of NaPi-IIa) were only partially abolished by PKA and PKC inhibition, but inhibition of MAPK completely abolished NaPi-IIa internalization¹⁴². This observation suggests a molecular connection between the PTH and FGF23 pathway, whereby the effect of PTH is dependent on MAPK activation. A recent *in vivo* study by Andrukhova *et al.* revealed that, in mice without FGF23 and klotho, chronic PTH effects are blunted in the PT, an effect restored by recombinant FGF23 administration, further supporting the idea that the actions of PTH are dependent on FGF23³. This led to the speculation that FGF23 signalling results in the phosphorylation of specific sites on NHERF-1, which are not phosphorylated by PKA or PKC (that is, the downstream mediators of PTH-PTHrP). At a systemic level, a similar relationship was observed. FGF23 knockout mice have normal serum PTH but display hyperphosphatemia, consistent with the phosphaturic effect of PTH being dependent on the presence of FGF23¹⁵⁸. Conversely, parathyroidectomized rats, when exposed to active vitamin D which stimulates FGF23 release, do not significantly increase their fractional excretion of phosphate compared with controls, consistent with the FGF23 effect being dependent on PTH¹⁶⁶. Similar effects are observed in hypoparathyroid patients who have high serum FGF23 and phosphate levels¹⁶⁷. Together, these studies suggest that there is molecular crosstalk between PTH signalling and FGFR signalling, whereby the phosphaturic effect of PTH and FGF23 is dependent on the other hormone. Overall, PTH and FGF regulation of phosphate balance is a complex process, and much remains to be answered: for example, the molecular mechanism of interaction between second messengers, and the presence of possible reciprocal regulatory mechanisms; that is, does FGF23 signalling activate PKA and PKC?

Conclusions

PTH and FGF23 are important physiological regulators of calcium and phosphate balance. Calcium reabsorption in the PT occurs primarily by the paracellular pathway, whereas phosphate reabsorption occurs through a transcellular pathway. Reabsorption of both minerals is coupled to sodium. Emerging work has implicated PTH in the direct inhibition of transcellular sodium transport and modulation of the paracellular pathway through which calcium is reabsorbed. Consequently, PTH inhibits calcium reabsorption from the PT, increasing distal delivery, but overall decreases urinary calcium excretion by increasing calcium reclamation from the distal nephron. PTH and FGF23 directly inhibit transcellular phosphate transport in the PT, resulting in increased phosphate excretion. Significant further experimental work is required to fully elucidate the complex PTH-active vitamin D-FGF23 axes in regulating calcium and phosphate transport across the nephron. Of concern, many experimental models are limited by the confounding effects of individual hormones

and crosstalk between them. Consistent with this, it seems an unlikely coincidence that both PTH and FGF23 regulate active vitamin D levels via their effect on the PT. Furthermore, whether PTH, active vitamin D, or FGF23 has an effect on PT transcellular calcium transport is not known. Thus, further delineating the molecular pathways mediating calcium and phosphate transport across the PT in the presence and absence of these hormones will contribute to our understanding of renal regulation of calcium and phosphate in both health and disease.

Competing interests

The authors declare that they have no competing interests.

Grant information

Work in the Alexander laboratory is funded by grants from the Women and Children's Health Research Institute, which is supported by the Stollery Children's Hospital Foundation, the Canadian Institutes of Health Research (MOP 136891), the National Sciences and Engineering Research Council, and the Kidney Foundation of Canada. HD is supported by Fabrikant Vilhelm Pedersen og Hustrus Mindelegat, the Novo Nordisk Foundation, the Carlsberg Foundation, the A.P. Møller Foundation, the Beckett Foundation, the Lundbeck Foundation, and the Danish Medical Research Council. MRB is supported by a Vanier Canada Graduate Scholarship.

The funders had no role in study design, data collection and analysis, decision to publish, or preparation of the manuscript.

References



- Blaine J, Chonchol M, Levi M: **Renal control of calcium, phosphate, and magnesium homeostasis.** *Clin J Am Soc Nephrol.* 2015; **10**(7): 1257–72.
[PubMed Abstract](#) | [Publisher Full Text](#) | [Free Full Text](#)
- Moe SM: **Disorders involving calcium, phosphorus, and magnesium.** *Prim Care.* 2008; **35**(2): 215–37, v–vi.
[PubMed Abstract](#) | [Publisher Full Text](#) | [Free Full Text](#)
- Andrukhova O, Streicher C, Zeitz U, et al.: **Fgf23 and parathyroid hormone signaling interact in kidney and bone.** *Mol Cell Endocrinol.* 2016; **436**: 224–39.
[PubMed Abstract](#) | [Publisher Full Text](#) | [F1000 Recommendation](#)
- Biber J, Hernando N, Forster I, et al.: **Regulation of phosphate transport in proximal tubules.** *Pflugers Arch.* 2009; **458**(1): 39–52.
[PubMed Abstract](#) | [Publisher Full Text](#)
- Biber J, Hernando N, Forster I: **Phosphate transporters and their function.** *Annu Rev Physiol.* 2013; **75**: 535–50.
[PubMed Abstract](#) | [Publisher Full Text](#)
- Erben RG, Andrukhova O: **FGF23 regulation of renal tubular solute transport.** *Curr Opin Nephrol Hypertens.* 2015; **24**(5): 450–6.
[PubMed Abstract](#) | [Publisher Full Text](#)
- Evan AP, Gattone VH 2nd, Connors BA: **Ultrastructural features of the rabbit proximal tubules.** *Arch Histol Cytol.* 1992; **55** Suppl: 139–45.
[PubMed Abstract](#) | [Publisher Full Text](#)
- Evan AP Jr, Hay DA, Dail WG: **SEM of the proximal tubule of the adult rabbit kidney.** *Anat Rec.* 1978; **191**(14): 397–413.
[PubMed Abstract](#) | [Publisher Full Text](#)
- Taub M: **Primary kidney cells.** *Methods Mol Biol.* 1997; **75**: 153–61.
[PubMed Abstract](#) | [Publisher Full Text](#) | [Free Full Text](#)
- Kriz W, Bankir L: **A standard nomenclature for structures of the kidney. The Renal Commission of the International Union of Physiological Sciences (IUPS).** *Kidney Int.* 1988; **33**(1): 1–7.
[PubMed Abstract](#) | [Publisher Full Text](#)
- Yu AS: **Claudins and the kidney.** *J Am Soc Nephrol.* 2015; **26**(1): 11–9.
[PubMed Abstract](#) | [Publisher Full Text](#) | [Free Full Text](#)
- Frömter E, Rümrich G, Ullrich KJ: **Phenomenologic description of Na⁺, Cl⁻ and HCO₃⁻ absorption from proximal tubules of rat kidney.** *Pflugers Arch.* 1973; **343**(3): 189–220.
[PubMed Abstract](#) | [Publisher Full Text](#)
- Rector FC Jr: **Sodium, bicarbonate, and chloride absorption by the proximal tubule.** *Am J Physiol.* 1983; **244**(5): F461–71.
[PubMed Abstract](#)
- Ng RC, Rouse D, Suki WN: **Calcium transport in the rabbit superficial proximal convoluted tubule.** *J Clin Invest.* 1984; **74**(3): 834–42.
[PubMed Abstract](#) | [Publisher Full Text](#) | [Free Full Text](#) | [F1000 Recommendation](#)
- Bank N, Aynedjian HS, Weinstein SW: **A microperfusion study of phosphate reabsorption by the rat proximal renal tubule. Effect of parathyroid hormone.** *J Clin Invest.* 1974; **54**(5): 1040–8.
[PubMed Abstract](#) | [Publisher Full Text](#) | [Free Full Text](#)
- Blau JE, Collins MT: **The PTH-Vitamin D-FGF23 axis.** *Rev Endocr Metab Disord.* 2015; **16**(2): 165–74.
[PubMed Abstract](#) | [Publisher Full Text](#)
- Fleet JC: **The role of vitamin D in the endocrinology controlling calcium homeostasis.** *Mol Cell Endocrinol.* 2017; **453**: 36–45.
[PubMed Abstract](#) | [Publisher Full Text](#) | [Free Full Text](#)
- Khundmiri SJ, Murray RD, Lederer E: **PTH and Vitamin D.** *Compr Physiol.* 2016; **6**(2): 561–601.
[PubMed Abstract](#) | [Publisher Full Text](#)
- Martin A, David V, Quarles LD: **Regulation and function of the FGF23/klotho endocrine pathways.** *Physiol Rev.* 2012; **92**(1): 131–55.
[PubMed Abstract](#) | [Publisher Full Text](#) | [Free Full Text](#)
- Collip J: **The extraction of a parathyroid hormone which will prevent or control parathyroid tetany and which regulates the level of blood calcium.** *J Biol Chem.* 1925; **63**: 395–438.
[Reference Source](#)
- Migicovsky BB, Jamieson JW: **Calcium absorption and vitamin D.** *Can J Biochem Physiol.* 1955; **33**(2): 202–8.
[PubMed Abstract](#)
- Schartum S, Nichols G Jr: **Calcium metabolism of bone in vitro. Influence of bone cellular metabolism and parathyroid hormone.** *J Clin Invest.* 1961; **40**(11): 2083–91.
[PubMed Abstract](#) | [Publisher Full Text](#) | [Free Full Text](#)
- Carone FA, Epstein FH, Beck D, et al.: **The effects upon the kidney of transient hypercalcemia induced by parathyroid extract.** *Am J Pathol.* 1960; **36**: 77–103.
[PubMed Abstract](#) | [Free Full Text](#)
- Harrison HE, Harrison HC: **The renal excretion of inorganic phosphate in relation to the action of vitamin d and parathyroid hormone.** *J Clin Invest.* 1941; **20**(1): 47–55.
[PubMed Abstract](#) | [Publisher Full Text](#) | [Free Full Text](#)
- Traebert M, Völkl H, Biber J, et al.: **Luminal and contraluminal action of 1-34 and 3-34 PTH peptides on renal type IIa Na-P(i) cotransporter.** *Am J Physiol Renal Physiol.* 2000; **278**(5): F792–8.
[PubMed Abstract](#)
- Gensure RC, Gardella TJ, Jüppner H: **Parathyroid hormone and parathyroid hormone-related peptide, and their receptors.** *Biochem Biophys Res Commun.* 2005; **328**(3): 666–78.
[PubMed Abstract](#) | [Publisher Full Text](#)
- Hewison M, Zehnder D, Bland R, et al.: **1alpha-Hydroxylase and the action of vitamin D.** *J Mol Endocrinol.* 2000; **25**(2): 141–8.
[PubMed Abstract](#) | [Publisher Full Text](#)
- Hebert SC, Brown EM, Harris HW: **Role of the Ca²⁺-sensing receptor in divalent mineral ion homeostasis.** *J Exp Biol.* 1997; **200**(Pt 2): 295–302.
[PubMed Abstract](#)
- Liu S, Tang W, Zhou J, et al.: **Fibroblast growth factor 23 is a counter-regulatory phosphaturic hormone for vitamin D.** *J Am Soc Nephrol.* 2006; **17**(5): 1305–15.
[PubMed Abstract](#) | [Publisher Full Text](#)
- Erben RG, Andrukhova O: **FGF23-Klotho signaling axis in the kidney.** *Bone.* 2017; **100**: 62–8.
[PubMed Abstract](#) | [Publisher Full Text](#)
- Andrukhova O, Zeitz U, Goetz R, et al.: **FGF23 acts directly on renal proximal tubules to induce phosphaturia through activation of the ERK1/2-SGK1 signaling pathway.** *Bone.* 2012; **51**(3): 621–8.
[PubMed Abstract](#) | [Publisher Full Text](#) | [Free Full Text](#)
- Andrukhova O, Smorodchenko A, Egerbacher M, et al.: **FGF23 promotes renal calcium reabsorption through the TRPV5 channel.** *EMBO J.* 2014; **33**(3): 229–46.
[PubMed Abstract](#) | [Publisher Full Text](#) | [Free Full Text](#) | [F1000 Recommendation](#)
- Alexander RT, Woudenberg-Vrenken TE, Buurman J, et al.: **Klotho prevents renal**

- calcium loss. *J Am Soc Nephrol*. 2009; 20(11): 2371–9.
[PubMed Abstract](#) | [Publisher Full Text](#) | [Free Full Text](#)
34. Samadifam R, Richard C, Nguyen-Yamamoto L, et al.: **Bone formation regulates circulating concentrations of fibroblast growth factor 23**. *Endocrinology*. 2009; 150(11): 4835–45.
[PubMed Abstract](#) | [Publisher Full Text](#)
35. Saji F, Shiizaki K, Shimada S, et al.: **Regulation of fibroblast growth factor 23 production in bone in uremic rats**. *Nephron Physiol*. 2009; 111(4): p59–66.
[PubMed Abstract](#) | [Publisher Full Text](#)
36. Rodríguez-Ortiz ME, Rodríguez M: **FGF23 as a calciotropic hormone [version 1; referees: 2 approved]**. *F1000Res*. 2015; 4: pii: F1000 Faculty Rev-1472.
[PubMed Abstract](#) | [Publisher Full Text](#) | [Free Full Text](#)
37. Suki WN: **Calcium transport in the nephron**. *Am J Physiol*. 1979; 237(1): F1–6.
[PubMed Abstract](#)
38. Seldin DW: **Renal handling of calcium**. *Nephron*. 1999; 81 Suppl 1: 2–7.
[PubMed Abstract](#) | [Publisher Full Text](#)
39. Duarte CG, Watson JF: **Calcium reabsorption in proximal tubule of the dog nephron**. *Am J Physiol*. 1967; 212(6): 1355–60.
[PubMed Abstract](#)
40. Sutton RA, Dirks JH: **The renal excretion of calcium: a review of micropuncture data**. *Can J Physiol Pharmacol*. 1975; 53(6): 979–88.
[PubMed Abstract](#) | [Publisher Full Text](#)
41. Edwards BR, Baer PG, Sutton RA, et al.: **Micropuncture study of diuretic effects on sodium and calcium reabsorption in the dog nephron**. *J Clin Invest*. 1973; 52(10): 2418–27.
[PubMed Abstract](#) | [Publisher Full Text](#) | [Free Full Text](#)
42. Beck LH, Goldberg M: **Effects of acetazolamide and parathyroidectomy on renal transport of sodium, calcium, and phosphate**. *Am J Physiol*. 1973; 224(5): 1136–42.
[PubMed Abstract](#)
43. Agus ZS, Gardner LB, Beck LH, et al.: **Effects of parathyroid hormone on renal tubular reabsorption of calcium, sodium, and phosphate**. *Am J Physiol*. 1973; 224(5): 1143–8.
[PubMed Abstract](#)
44. Moor MB, Bonny O: **Ways of calcium reabsorption in the kidney**. *Am J Physiol Renal Physiol*. 2016; 310(11): F1337–50.
[PubMed Abstract](#) | [Publisher Full Text](#)
45. Almeida AL, Kudo LH, Rocha AS: **Calcium transport in isolated perfused pars recta of proximal tubule**. *Braz J Med Biol Res*. 1981; 14(1): 43–9.
[PubMed Abstract](#)
46. **F** Rouse D, Ng RC, Suki WN: **Calcium transport in the pars recta and thin descending limb of Henle of the rabbit, perfused in vitro**. *J Clin Invest*. 1980; 65(1): 37–42.
[PubMed Abstract](#) | [Publisher Full Text](#) | [Free Full Text](#) | [F1000 Recommendation](#)
47. Zhang MI, O'Neil RG: **Regulated calcium channel in apical membranes renal proximal tubule cells**. *Am J Physiol*. 1996; 271(5 Pt 1): C1757–64.
[PubMed Abstract](#)
48. Goel M, Sinkins WG, Zuo CD, et al.: **Identification and localization of TRPC channels in the rat kidney**. *Am J Physiol Renal Physiol*. 2006; 290(5): F1241–52.
[PubMed Abstract](#) | [Publisher Full Text](#)
49. Palmer LG, Schnermann J: **Integrated control of Na transport along the nephron**. *Clin J Am Soc Nephrol*. 2015; 10(4): 676–87.
[PubMed Abstract](#) | [Publisher Full Text](#) | [Free Full Text](#)
50. Curthoys NP, Moe OW: **Proximal tubule function and response to acidosis**. *Clin J Am Soc Nephrol*. 2014; 9(9): 1627–38.
[PubMed Abstract](#) | [Publisher Full Text](#) | [Free Full Text](#)
51. **F** Schnermann J, Huang Y, Mizel D: **Fluid reabsorption in proximal convoluted tubules of mice with gene deletions of claudin-2 and/or aquaporin1**. *Am J Physiol Renal Physiol*. 2013; 305(9): F1352–64.
[PubMed Abstract](#) | [Publisher Full Text](#) | [Free Full Text](#) | [F1000 Recommendation](#)
52. Wang T, Yang CL, Abbiati T, et al.: **Mechanism of proximal tubule bicarbonate absorption in NHE3 null mice**. *Am J Physiol*. 1999; 277(2 Pt 2): F298–302.
[PubMed Abstract](#)
53. Schultheis PJ, Clarke LL, Meneton P, et al.: **Renal and intestinal absorptive defects in mice lacking the NHE3 Na⁺/H⁺ exchanger**. *Nat Genet*. 1998; 19(3): 282–5.
[PubMed Abstract](#)
54. Lorenz JN, Schultheis PJ, Traynor T, et al.: **Micropuncture analysis of single-nephron function in NHE3-deficient mice**. *Am J Physiol*. 1999; 277(3 Pt 2): F447–53.
[PubMed Abstract](#)
55. Alexander RT, Dimke H, Cordat E: **Proximal tubular NHEs: sodium, protons and calcium?** *Am J Physiol Renal Physiol*. 2013; 305(3): F229–36.
[PubMed Abstract](#) | [Publisher Full Text](#) | [Free Full Text](#)
56. Alexander RT, Rievaj J, Dimke H: **Paracellular calcium transport across renal and intestinal epithelia**. *Biochem Cell Biol*. 2014; 92(6): 467–80.
[PubMed Abstract](#) | [Publisher Full Text](#)
57. Amasheh S, Meiri N, Gitter AH, et al.: **Claudin-2 expression induces cation-selective channels in tight junctions of epithelial cells**. *J Cell Sci*. 2002; 115(Pt 24): 4969–76.
[PubMed Abstract](#) | [Publisher Full Text](#)
58. Barratt LJ, Rector FC Jr, Kokko JP, et al.: **Factors governing the transepithelial potential difference across the proximal tubule of the rat kidney**. *J Clin Invest*. 1974; 53(2): 454–64.
[PubMed Abstract](#) | [Publisher Full Text](#) | [Free Full Text](#)
59. Pan W, Borovac J, Spicer Z, et al.: **The epithelial sodium/proton exchanger, NHE3, is necessary for renal and intestinal calcium (re)absorption**. *Am J Physiol Renal Physiol*. 2012; 302(8): F943–56.
[PubMed Abstract](#) | [Publisher Full Text](#) | [Free Full Text](#)
60. Rievaj J, Pan W, Cordat E, et al.: **The Na⁺/H⁺ exchanger isoform 3 is required for active paracellular and transcellular Ca²⁺ transport across murine cecum**. *Am J Physiol Gastrointest Liver Physiol*. 2013; 305(4): G303–13.
[PubMed Abstract](#) | [Publisher Full Text](#) | [Free Full Text](#)
61. **F** Charoenphandhu N, Kraidth K, Lertsuwan K, et al.: **Na⁺/H⁺ exchanger 3 inhibitor diminishes hepcidin-enhanced duodenal calcium transport in hemizygous β-globin knockout thalassaemic mice**. *Mol Cell Biochem*. 2017; 427(1–2): 201–8.
[PubMed Abstract](#) | [Publisher Full Text](#) | [F1000 Recommendation](#)
62. Sutton RA, Wong NL, Dirks JH: **Effects of parathyroid hormone on sodium and calcium transport in the dog nephron**. *Clin Sci Mol Med*. 1976; 51(4): 345–51.
[PubMed Abstract](#) | [Publisher Full Text](#)
63. Burnatowska MA, Harris CA, Sutton RA, et al.: **Effects of PTH and cAMP on renal handling of calcium, magnesium, and phosphate in the hamster**. *Am J Physiol*. 1977; 233(6): F514–8.
[PubMed Abstract](#)
64. Harris CA, Burnatowska MA, Seely JF, et al.: **Effects of parathyroid hormone on electrolyte transport in the hamster nephron**. *Am J Physiol*. 1979; 236(4): F342–8.
[PubMed Abstract](#)
65. Bourdeau JE, Burg MB: **Effect of PTH on calcium transport across the cortical thick ascending limb of Henle's loop**. *Am J Physiol*. 1980; 239(2): F121–6.
[PubMed Abstract](#)
66. Di Stefano A, Wittner M, Nitschke R, et al.: **Effects of parathyroid hormone and calcitonin on Na⁺, Cl⁻, K⁺, Mg²⁺ and Ca²⁺ transport in cortical and medullary thick ascending limbs of mouse kidney**. *Pflügers Arch*. 1990; 417(2): 161–7.
[PubMed Abstract](#) | [Publisher Full Text](#)
67. van Abel M, Hoenderop JG, van der Kemp AW, et al.: **Coordinated control of renal Ca²⁺ transport proteins by parathyroid hormone**. *Kidney Int*. 2005; 68(4): 1708–21.
[PubMed Abstract](#) | [Publisher Full Text](#)
68. **F** de Groot T, Lee K, Langeslag M, et al.: **Parathyroid hormone activates TRPV5 via PKA-dependent phosphorylation**. *J Am Soc Nephrol*. 2009; 20(8): 1693–704.
[PubMed Abstract](#) | [Publisher Full Text](#) | [Free Full Text](#) | [F1000 Recommendation](#)
69. de Groot T, Kovalevskaya NV, Verkaar S, et al.: **Molecular mechanisms of calmodulin action on TRPV5 and modulation by parathyroid hormone**. *Mol Cell Biol*. 2011; 31(14): 2845–53.
[PubMed Abstract](#) | [Publisher Full Text](#) | [Free Full Text](#)
70. Cha SK, Wu T, Huang CL: **Protein kinase C inhibits caveolae-mediated endocytosis of TRPV5**. *Am J Physiol Renal Physiol*. 2008; 294(5): F1212–21.
[PubMed Abstract](#) | [Publisher Full Text](#)
71. Lambers TT, Bindels RJ, Hoenderop JG: **Coordinated control of renal Ca²⁺ handling**. *Kidney Int*. 2006; 69(4): 650–4.
[PubMed Abstract](#) | [Publisher Full Text](#)
72. Hoenderop JG, Müller D, Van Der Kemp AW, et al.: **Calcitriol controls the epithelial calcium channel in kidney**. *J Am Soc Nephrol*. 2001; 12(7): 1342–9.
[PubMed Abstract](#)
73. **F** Agus ZS, Puschett JB, Senesky D, et al.: **Mode of action of parathyroid hormone and cyclic adenosine 3',5'-monophosphate on renal tubular phosphate reabsorption in the dog**. *J Clin Invest*. 1971; 50(3): 617–26.
[PubMed Abstract](#) | [Publisher Full Text](#) | [Free Full Text](#) | [F1000 Recommendation](#)
74. Neri EA, Bezerra CN, Queiroz-Leite GD, et al.: **Parathyroid hormone inhibition of Na⁺/H⁺ exchanger 3 transcription: Intracellular signaling pathways and transcription factor expression**. *Biochem Biophys Res Commun*. 2015; 461(4): 582–8.
[PubMed Abstract](#) | [Publisher Full Text](#)
75. Bezerra CN, Girardi AC, Carraro-Lacroix LR, et al.: **Mechanisms underlying the long-term regulation of NHE3 by parathyroid hormone**. *Am J Physiol Renal Physiol*. 2008; 294(5): F1232–7.
[PubMed Abstract](#) | [Publisher Full Text](#)
76. Collazo R, Fan L, Hu MC, et al.: **Acute regulation of Na⁺/H⁺ exchanger NHE3 by parathyroid hormone via NHE3 phosphorylation and dynamin-dependent endocytosis**. *J Biol Chem*. 2000; 275(41): 31601–8.
[PubMed Abstract](#) | [Publisher Full Text](#)
77. Yang LE, Maunsbach AB, Leong PK, et al.: **Differential traffic of proximal tubule Na⁺ transporters during hypertension or PTH: NHE3 to base of microvilli vs. NaPi2 to endosomes**. *Am J Physiol Renal Physiol*. 2004; 287(5): F896–906.
[PubMed Abstract](#) | [Publisher Full Text](#)
78. Girardi AC, Titan SM, Malnic G, et al.: **Chronic effect of parathyroid hormone on NHE3 expression in rat renal proximal tubules**. *Kidney Int*. 2000; 58(4): 1623–31.
[PubMed Abstract](#) | [Publisher Full Text](#)
79. Wang W, Li C, Kwon TH, et al.: **Reduced expression of renal Na⁺ transporters in rats with PTH-induced hypercalcemia**. *Am J Physiol Renal Physiol*. 2004; 286(3): F534–45.
[PubMed Abstract](#) | [Publisher Full Text](#)
80. Zhang Y, Norian JM, Magyar CE, et al.: **In vivo PTH provokes apical NHE3 and NaPi2 redistribution and Na-K-ATPase inhibition**. *Am J Physiol*. 1999; 276(5 Pt 2): F711–9.
[PubMed Abstract](#)
81. Kurashima K, Yu FH, Cabado AG, et al.: **Identification of sites required for down-regulation of Na⁺/H⁺ exchanger NHE3 activity by cAMP-dependent protein**

- kinase. phosphorylation-dependent and -independent mechanisms. *J Biol Chem.* 1997; **272**(45): 28672–9.
[PubMed Abstract](#) | [Publisher Full Text](#)
82. Yip JW, Ko WH, Viberi G, *et al.*: Regulation of the epithelial brush border Na⁺/H⁺ exchanger isoform 3 stably expressed in fibroblasts by fibroblast growth factor and phorbol esters is not through changes in phosphorylation of the exchanger. *J Biol Chem.* 1997; **272**(29): 18473–80.
[PubMed Abstract](#) | [Publisher Full Text](#)
83. Weinman EJ, Steplock D, Wang Y, *et al.*: Characterization of a protein cofactor that mediates protein kinase A regulation of the renal brush border membrane Na⁽⁺⁾-H⁺ exchanger. *J Clin Invest.* 1995; **95**(5): 2143–9.
[PubMed Abstract](#) | [Publisher Full Text](#) | [Free Full Text](#)
84. Yun CH, Oh S, Zizak M, *et al.*: cAMP-mediated inhibition of the epithelial brush border Na⁺/H⁺ exchanger, NHE3, requires an associated regulatory protein. *Proc Natl Acad Sci U S A.* 1997; **94**(7): 3010–5.
[PubMed Abstract](#) | [Publisher Full Text](#) | [Free Full Text](#)
85. Derrickson BH, Mandel LJ: Parathyroid hormone inhibits Na⁽⁺⁾-K⁽⁺⁾-ATPase through Gq/G11 and the calcium-independent phospholipase A2. *Am J Physiol.* 1997; **272**(6 Pt 2): F781–8.
[PubMed Abstract](#)
86. Satoh T, Cohen HT, Katz AI: Different mechanisms of renal Na-K-ATPase regulation by protein kinases in proximal and distal nephron. *Am J Physiol.* 1993; **265**(3 Pt 2): F399–405.
[PubMed Abstract](#)
87. Ominato M, Satoh T, Katz AI: Regulation of Na-K-ATPase activity in the proximal tubule: role of the protein kinase C pathway and of eicosanoids. *J Membr Biol.* 1996; **152**(3): 235–43.
[PubMed Abstract](#) | [Publisher Full Text](#)
88. Khundmiri SJ, Dean WL, McLeish KR, *et al.*: Parathyroid hormone-mediated regulation of Na⁺-K⁺-ATPase requires ERK-dependent translocation of protein kinase Calpha. *J Biol Chem.* 2005; **280**(10): 8705–13.
[PubMed Abstract](#) | [Publisher Full Text](#)
89. Khundmiri SJ, Ameen M, Delamere NA, *et al.*: PTH-mediated regulation of Na⁺-K⁺-ATPase requires Src kinase-dependent ERK phosphorylation. *Am J Physiol Renal Physiol.* 2008; **295**(2): F426–37.
[PubMed Abstract](#) | [Publisher Full Text](#) | [Free Full Text](#)
90. Liu FY, Cogan MG: Angiotensin II stimulates early proximal bicarbonate absorption in the rat by decreasing cyclic adenosine monophosphate. *J Clin Invest.* 1989; **84**(1): 83–91.
[PubMed Abstract](#) | [Publisher Full Text](#) | [Free Full Text](#)
91. Yeh BI, Sun TJ, Lee JZ, *et al.*: Mechanism and molecular determinant for regulation of rabbit transient receptor potential type 5 (TRPV5) channel by extracellular pH. *J Biol Chem.* 2003; **278**(51): 51044–52.
[PubMed Abstract](#) | [Publisher Full Text](#)
92. Ichikawa I, Brenner BM: Effects of parathyroid hormone on glomerular function. *Contrib Nephrol.* 1980; **20**: 38–45.
[PubMed Abstract](#)
93. Ichikawa I, Humes HD, Dousa TP, *et al.*: Influence of parathyroid hormone on glomerular ultrafiltration in the rat. *Am J Physiol.* 1978; **234**(5): F393–401.
[PubMed Abstract](#)
94. Marchand GR: Effect of parathyroid hormone on the determinants of glomerular filtration in dogs. *Am J Physiol.* 1985; **248**(4 Pt 2): F482–6.
[PubMed Abstract](#)
95. Tassone F, Gianotti L, Emmolo I, *et al.*: Glomerular filtration rate and parathyroid hormone secretion in primary hyperparathyroidism. *J Clin Endocrinol Metab.* 2009; **94**(11): 4458–61.
[PubMed Abstract](#) | [Publisher Full Text](#)
96. Aronson PS, Giebisch G: Mechanisms of chloride transport in the proximal tubule. *Am J Physiol.* 1997; **273**(2 Pt 2): F179–92.
[PubMed Abstract](#)
97. Pollock CA, Lawrence JR, Field MJ: Tubular sodium handling and tubuloglomerular feedback in experimental diabetes mellitus. *Am J Physiol.* 1991; **260**(6 Pt 2): F946–52.
[PubMed Abstract](#)
98. Wittner M, Mandon B, Roinel N, *et al.*: Hormonal stimulation of Ca²⁺ and Mg²⁺ transport in the cortical thick ascending limb of Henle's loop of the mouse: evidence for a change in the paracellular pathway permeability. *Pflügers Arch.* 1993; **423**(5–6): 387–96.
[PubMed Abstract](#)
99. Motoyama HI, Friedman PA: Calcium-sensing receptor regulation of PTH-dependent calcium absorption by mouse cortical ascending limbs. *Am J Physiol Renal Physiol.* 2002; **283**(3): F399–406.
[PubMed Abstract](#) | [Publisher Full Text](#)
100. Loupy A, Ramakrishnan SK, Woolta B, *et al.*: PTH-independent regulation of blood calcium concentration by the calcium-sensing receptor. *J Clin Invest.* 2012; **122**(9): 3355–67.
[PubMed Abstract](#) | [Publisher Full Text](#) | [Free Full Text](#) | [F1000 Recommendation](#)
101. Hoenderop JG, Nilius B, Bindels RJ: Molecular mechanism of active Ca²⁺ reabsorption in the distal nephron. *Annu Rev Physiol.* 2002; **64**: 529–49.
[PubMed Abstract](#) | [Publisher Full Text](#)
102. Lorentz WB: Effect of parathyroid hormone on renal tubular permeability. *Am J Physiol.* 1976; **231**(5 Pt. 1): 1401–7.
[PubMed Abstract](#)
103. Jacobson HR: Altered permeability in the proximal tubule response to cyclic AMP. *Am J Physiol.* 1979; **236**(1): F71–9.
[PubMed Abstract](#)
104. Turner JR, Black ED, Ward J, *et al.*: Transepithelial resistance can be regulated by the intestinal brush-border Na⁽⁺⁾/H⁽⁺⁾ exchanger NHE3. *Am J Physiol Cell Physiol.* 2000; **279**(6): C1918–24.
[PubMed Abstract](#)
105. Toka HR, Pollak MR, Houillier P: Calcium Sensing in the Renal Tubule. *Physiology (Bethesda).* 2015; **30**(4): 317–26.
[PubMed Abstract](#) | [Publisher Full Text](#)
106. Brown EM, Gamba G, Riccardi D, *et al.*: Cloning and characterization of an extracellular Ca²⁺-sensing receptor from bovine parathyroid. *Nature.* 1993; **366**(6455): 575–80.
[PubMed Abstract](#) | [Publisher Full Text](#)
107. Riccardi D, Traebert M, Ward DT, *et al.*: Dietary phosphate and parathyroid hormone alter the expression of the calcium-sensing receptor (CaR) and the Na⁺-dependent Pi transporter (NaPi-2) in the rat proximal tubule. *Pflügers Arch.* 2000; **441**(2–3): 379–87.
[PubMed Abstract](#) | [Publisher Full Text](#)
108. Ba J, Brown D, Friedman PA: Calcium-sensing receptor regulation of PTH-inhibitable proximal tubule phosphate transport. *Am J Physiol Renal Physiol.* 2003; **285**(6): F1233–43.
[PubMed Abstract](#) | [Publisher Full Text](#)
109. Graca JAZ, Schepelmann M, Brennan SC, *et al.*: Comparative expression of the extracellular calcium-sensing receptor in the mouse, rat, and human kidney. *Am J Physiol Renal Physiol.* 2016; **310**(6): F518–33.
[PubMed Abstract](#) | [Publisher Full Text](#) | [Free Full Text](#) | [F1000 Recommendation](#)
110. Di Mise A, Tamma G, Ranieri M, *et al.*: Conditionally immortalized human proximal tubular epithelial cells isolated from the urine of a healthy subject express functional calcium-sensing receptor. *Am J Physiol Renal Physiol.* 2015; **308**(11): F1200–6.
[PubMed Abstract](#) | [Publisher Full Text](#) | [F1000 Recommendation](#)
111. Capasso G, Geibel PJ, Damiano S, *et al.*: The calcium sensing receptor modulates fluid reabsorption and acid secretion in the proximal tubule. *Kidney Int.* 2013; **84**(2): 277–84.
[PubMed Abstract](#) | [Publisher Full Text](#) | [F1000 Recommendation](#)
112. Baran DT, Marcy TW: Evidence for a defect in vitamin D metabolism in a patient with incomplete Fanconi syndrome. *J Clin Endocrinol Metab.* 1984; **59**(5): 998–1001.
[PubMed Abstract](#) | [Publisher Full Text](#)
113. Szczepanska M, Zaniew M, Recker F, *et al.*: Dent disease in children: diagnostic and therapeutic considerations. *Clin Nephrol.* 2015; **84**(4): 222–30.
[PubMed Abstract](#) | [Publisher Full Text](#)
114. Meier W, Blumberg A, Imahorn W, *et al.*: Idiopathic hypercalciuria with bilateral macular colobomata: a new variant of oculo-renal syndrome. *Helv Paediatr Acta.* 1979; **34**(3): 257–69.
[PubMed Abstract](#)
115. Pook MA, Wrong O, Wooding C, *et al.*: Dent's disease, a renal Fanconi syndrome with nephrocalcinosis and kidney stones, is associated with a microdeletion involving DXS255 and maps to Xp11.22. *Hum Mol Genet.* 1993; **2**(12): 2129–34.
[PubMed Abstract](#) | [Publisher Full Text](#)
116. Hoopes RR Jr, Shrimpton AE, Knohl SJ, *et al.*: Dent Disease with mutations in OCRL1. *Am J Hum Genet.* 2005; **76**(2): 260–7.
[PubMed Abstract](#) | [Publisher Full Text](#) | [Free Full Text](#)
117. Picollo A, Pusch M: Chloride/proton antiporter activity of mammalian CLC proteins CIC-4 and CIC-5. *Nature.* 2005; **436**(7049): 420–3.
[PubMed Abstract](#) | [Publisher Full Text](#)
118. Lowe M: Structure and function of the Lowe syndrome protein OCRL1. *Traffic.* 2005; **6**(9): 711–9.
[PubMed Abstract](#) | [Publisher Full Text](#)
119. Favus M, Bushinsky D, Lemann J: Regulation of calcium, magnesium, and phosphate metabolism. In: *Primer On the Metabolic Bone Diseases and Disorders of Mineral Metabolism*. Sixth. Ann Harbor: American Society for Bone and Mineral Research; 2006; 76–83.
[Reference Source](#)
120. Sabbagh Y, Giral H, Caldas Y, *et al.*: Intestinal phosphate transport. *Adv Chronic Kidney Dis.* 2011; **18**(2): 85–90.
[PubMed Abstract](#) | [Publisher Full Text](#) | [Free Full Text](#)
121. Kaufman JS, Hamburger RJ: Lack of influence of volume flux on phosphate reabsorption in the proximal tubule. *Miner Electrolyte Metab.* 1987; **13**(3): 158–64.
[PubMed Abstract](#)
122. Villa-Bellosta R, Ravera S, Sorribas V, *et al.*: The Na⁺-P_i cotransporter PIT-2 (SLC20A2) is expressed in the apical membrane of rat renal proximal tubules and regulated by dietary P_i. *Am J Physiol Renal Physiol.* 2009; **296**(4): F691–9.
[PubMed Abstract](#) | [Publisher Full Text](#) | [Free Full Text](#)
123. Madjdpour C, Bacic D, Kaissling B, *et al.*: Segment-specific expression of sodium-phosphate cotransporters NaPi-IIa and -IIc and interacting proteins in mouse renal proximal tubules. *Pflügers Arch.* 2004; **448**(4): 402–10.
[PubMed Abstract](#) | [Publisher Full Text](#)
124. Bacconi A, Virkki LV, Biber J, *et al.*: Renouncing electroneutrality is not free of charge: switching on electrogenicity in a Na⁺-coupled phosphate cotransporter. *Proc Natl Acad Sci U S A.* 2005; **102**(35): 12606–11.
[PubMed Abstract](#) | [Publisher Full Text](#) | [Free Full Text](#)
125. Forster IC, Loo DD, Eskandari S: Stoichiometry and Na⁺ binding cooperativity

- of rat and flounder renal type II Na⁺-Pi cotransporters. *Am J Physiol*. 1999; 276(4 Pt 2): F644–9.
[PubMed Abstract](#)
126. Segawa H, Kaneko I, Takahashi A, et al.: Growth-related renal type II Na⁺/Pi cotransporter. *J Biol Chem*. 2002; 277(22): 19665–72.
[PubMed Abstract](#) | [Publisher Full Text](#)
127. Bai L, Collins JF, Ghishan FK: Cloning and characterization of a type III Na-dependent phosphate cotransporter from mouse intestine. *Am J Physiol Cell Physiol*. 2000; 279(4): C1135–43.
[PubMed Abstract](#)
128. Böttger P, Hede SE, Grunnet M, et al.: Characterization of transport mechanisms and determinants critical for Na⁺-dependent P_i symport of the PIT family paralogs human PIT1 and PIT2. *Am J Physiol Cell Physiol*. 2006; 291(6): C1377–87.
[PubMed Abstract](#) | [Publisher Full Text](#)
129. Segawa H, Onitsuka A, Furutani J, et al.: Npt2a and Npt2c in mice play distinct and synergistic roles in inorganic phosphate metabolism and skeletal development. *Am J Physiol Renal Physiol*. 2009; 297(3): F671–8.
[PubMed Abstract](#) | [Publisher Full Text](#)
130. Tenenhouse HS, Martel J, Gauthier C, et al.: Differential effects of Npt2a gene ablation and X-linked Hyp mutation on renal expression of Npt2c. *Am J Physiol Renal Physiol*. 2003; 285(6): F1271–8.
[PubMed Abstract](#) | [Publisher Full Text](#)
131. Beck L, Karaplis AC, Amizuka N, et al.: Targeted inactivation of Npt2 in mice leads to severe renal phosphate wasting, hypercalcaemia, and skeletal abnormalities. *Proc Natl Acad Sci U S A*. 1998; 95: 5372–7.
[PubMed Abstract](#) | [Publisher Full Text](#) | [Free Full Text](#)
132. Dinour D, Davidovits M, Ganon L, et al.: Loss of function of NaPiIIa causes nephrocalcinosis and possibly kidney insufficiency. *Pediatr Nephrol*. 2016; 31(12): 2289–97.
[PubMed Abstract](#) | [Publisher Full Text](#)
133. Magen D, Berger L, Coady MJ, et al.: A loss-of-function mutation in NaPi-IIa and renal Fanconi's syndrome. *N Engl J Med*. 2010; 362(12): 1102–9.
[PubMed Abstract](#) | [Publisher Full Text](#)
134. Lorenz-Depiereux B, Benet-Pages A, Eckstein G, et al.: Hereditary hypophosphatemic rickets with hypercalciuria is caused by mutations in the sodium-phosphate cotransporter gene SLC34A3. *Am J Hum Genet*. 2006; 78(2): 193–201.
[PubMed Abstract](#) | [Publisher Full Text](#) | [Free Full Text](#)
135. Bergwitz C, Roslin NM, Tieder M, et al.: SLC34A3 mutations in patients with hereditary hypophosphatemic rickets with hypercalciuria predict a key role for the sodium-phosphate cotransporter NaPi-IIc in maintaining phosphate homeostasis. *Am J Hum Genet*. 2006; 78(2): 179–92.
[PubMed Abstract](#) | [Publisher Full Text](#) | [Free Full Text](#) | [F1000 Recommendation](#)
136. Ansermet C, Moor MB, Centeno G, et al.: Renal Fanconi Syndrome and Hypophosphatemic Rickets in the Absence of Xenotropic and Polytopic Retroviral Receptor in the Nephron. *J Am Soc Nephrol*. 2017; 28(4): 1073–8.
[PubMed Abstract](#) | [Publisher Full Text](#) | [Free Full Text](#) | [F1000 Recommendation](#)
137. Kurnik BR, Hruska KA: Effects of 1,25-dihydroxycholecalciferol on phosphate transport in vitamin D-deprived rats. *Am J Physiol*. 1984; 247(1 Pt 2): F177–84.
[PubMed Abstract](#)
138. Egel J, Pfanstiel J, Puschett JB: Effects of 1,25-dihydroxyvitamin D3 on membrane transport and intermediary metabolism. *Miner Electrolyte Metab*. 1985; 11(1): 62–8.
[PubMed Abstract](#)
139. Matsumoto N, Hemmi A, Yamato H, et al.: Immunohistochemical analyses of parathyroid hormone-dependent downregulation of renal type II Na-Pi cotransporters by cryobiopsy. *J Med Invest*. 2010; 57(1–2): 138–45.
[PubMed Abstract](#) | [Publisher Full Text](#)
140. Picard N, Capuano P, Stange G, et al.: Acute parathyroid hormone differentially regulates renal brush border membrane phosphate cotransporters. *Pflügers Arch*. 2010; 460(3): 677–87.
[PubMed Abstract](#) | [Publisher Full Text](#)
141. Segawa H, Yamanaka S, Onitsuka A, et al.: Parathyroid hormone-dependent endocytosis of renal type IIc Na-Pi cotransporter. *Am J Physiol Renal Physiol*. 2007; 292(1): F395–403.
[PubMed Abstract](#) | [Publisher Full Text](#)
142. Bacic D, Lehir M, Biber J, et al.: The renal Na⁺/phosphate cotransporter NaPi-IIa is internalized via the receptor-mediated endocytic route in response to parathyroid hormone. *Kidney Int*. 2006; 69(3): 495–503.
[PubMed Abstract](#) | [Publisher Full Text](#)
143. Kempson SA, Lötscher M, Kaissling B, et al.: Parathyroid hormone action on phosphate transporter mRNA and protein in rat renal proximal tubules. *Am J Physiol*. 1995; 268(4 Pt 2): F784–91.
[PubMed Abstract](#)
144. Gislis SM, Pribanic S, Bacic D, et al.: PDZK1: I. a major scaffold in brush borders of proximal tubular cells. *Kidney Int*. 2003; 64(5): 1733–45.
[PubMed Abstract](#) | [Publisher Full Text](#)
145. Gislis SM, Stajlar J, Traebert M, et al.: Interaction of the type IIa Na/Pi cotransporter with PDZ proteins. *J Biol Chem*. 2001; 276(12): 9206–13.
[PubMed Abstract](#) | [Publisher Full Text](#)
146. Dobbie H, Unwin RJ, Faria NJR, et al.: Matrix extracellular phosphoglycoprotein causes phosphaturia in rats by inhibiting tubular phosphate reabsorption. *Nephrol Dial Transplant*. 2008; 23(2): 730–3.
[PubMed Abstract](#) | [Publisher Full Text](#)
147. Weinman EJ, Steplock D, Cha B, et al.: PTH transiently increases the percent mobile fraction of Npt2a in OK cells as determined by FRAP. *Am J Physiol Renal Physiol*. 2009; 297(6): F1560–5.
[PubMed Abstract](#) | [Publisher Full Text](#) | [Free Full Text](#)
148. Courbebaisse M, Leroy C, Bakouh N, et al.: A new human NHERF1 mutation decreases renal phosphate transporter NPT2a expression by a PTH-independent mechanism. *PLoS One*. 2012; 7(4): e34764.
[PubMed Abstract](#) | [Publisher Full Text](#) | [Free Full Text](#)
149. Karim Z, Gérard B, Bakouh N, et al.: NHERF1 mutations and responsiveness of renal parathyroid hormone. *N Engl J Med*. 2008; 359(11): 1128–35.
[PubMed Abstract](#) | [Publisher Full Text](#) | [F1000 Recommendation](#)
150. Witteveen JE, van Lierop AH, Papapoulos SE, et al.: Increased circulating levels of FGF23: an adaptive response in primary hyperparathyroidism? *Eur J Endocrinol*. 2012; 166(1): 55–60.
[PubMed Abstract](#) | [Publisher Full Text](#)
151. Shimada T, Urakawa I, Yamazaki Y, et al.: FGF-23 transgenic mice demonstrate hypophosphatemic rickets with reduced expression of sodium phosphate cotransporter type IIa. *Biochem Biophys Res Commun*. 2004; 314(2): 409–14.
[PubMed Abstract](#) | [Publisher Full Text](#)
152. Larsson T, Marsell R, Schipani E, et al.: Transgenic mice expressing fibroblast growth factor 23 under the control of the alpha1(I) collagen promoter exhibit growth retardation, osteomalacia, and disturbed phosphate homeostasis. *Endocrinology*. 2004; 145(7): 3087–94.
[PubMed Abstract](#) | [Publisher Full Text](#)
153. Yan X, Yokote H, Jing X, et al.: Fibroblast growth factor 23 reduces expression of type IIa Na⁺/Pi co-transporter by signaling through a receptor functionally distinct from the known FGFRs in opossum kidney cells. *Genes Cells*. 2005; 10(5): 489–502.
[PubMed Abstract](#) | [Publisher Full Text](#)
154. Yamazaki M, Ozono K, Okada T, et al.: Both FGF23 and extracellular phosphate activate Raf/MEK/ERK pathway via FGF receptors in HEK293 cells. *J Cell Biochem*. 2010; 111(5): 1210–21.
[PubMed Abstract](#) | [Publisher Full Text](#)
155. Huang T, Lin X, Li Q, et al.: Selection of a novel FGF23-binding peptide antagonizing the inhibitory effect of FGF23 on phosphate uptake. *Appl Microbiol Biotechnol*. 2015; 99(7): 3169–77.
[PubMed Abstract](#) | [Publisher Full Text](#)
156. Gattineni J, Bates C, Twombly K, et al.: FGF23 decreases renal NaPi-2a and NaPi-2c expression and induces hypophosphatemia in vivo predominantly via FGF receptor 1. *Am J Physiol Renal Physiol*. 2009; 297(2): F282–91.
[PubMed Abstract](#) | [Publisher Full Text](#) | [Free Full Text](#)
157. Gattineni J, Alphonse P, Zhang Q, et al.: Regulation of renal phosphate transport by FGF23 is mediated by FGFR1 and FGFR4. *Am J Physiol Renal Physiol*. 2014; 306(3): F351–8.
[PubMed Abstract](#) | [Publisher Full Text](#) | [Free Full Text](#) | [F1000 Recommendation](#)
158. Shimada T, Kakitani M, Yamazaki Y, et al.: Targeted ablation of Fgf23 demonstrates an essential physiological role of FGF23 in phosphate and vitamin D metabolism. *J Clin Invest*. 2004; 113(4): 561–8.
[PubMed Abstract](#) | [Publisher Full Text](#) | [Free Full Text](#)
159. Shimada T, Mizutani S, Muto T, et al.: Cloning and characterization of FGF23 as a causative factor of tumor-induced osteomalacia. *Proc Natl Acad Sci U S A*. 2001; 98(11): 6500–5.
[PubMed Abstract](#) | [Publisher Full Text](#) | [Free Full Text](#) | [F1000 Recommendation](#)
160. Bacic D, Schulz N, Biber J, et al.: Involvement of the MAPK-kinase pathway in the PTH-mediated regulation of the proximal tubule type IIa Na⁺/Pi cotransporter in mouse kidney. *Pflügers Arch*. 2003; 446(1): 52–60.
[PubMed Abstract](#) | [Publisher Full Text](#)
161. Nair D, Misra RP, Sallis JD, et al.: Phosphocitrate inhibits a basic calcium phosphate and calcium pyrophosphate dihydrate crystal-induced mitogen-activated protein kinase cascade signal transduction pathway. *J Biol Chem*. 1997; 272(30): 18920–5.
[PubMed Abstract](#) | [Publisher Full Text](#)
162. Julien M, Magne D, Masson M, et al.: Phosphate stimulates matrix Gla protein expression in chondrocytes through the extracellular signal regulated kinase signaling pathway. *Endocrinology*. 2007; 148(2): 530–7.
[PubMed Abstract](#) | [Publisher Full Text](#) | [Free Full Text](#)
163. Chong WH, Molinolo AA, Chen CC, et al.: Tumor-induced osteomalacia. *Endocr Relat Cancer*. 2011; 18(3): R53–77.
[PubMed Abstract](#) | [Publisher Full Text](#) | [Free Full Text](#)
164. Yang Y, Wang B: Disruption of β -catenin binding to parathyroid hormone (PTH) receptor inhibits PTH-stimulated ERK1/2 activation. *Biochem Biophys Res Commun*. 2015; 464(1): 27–32.
[PubMed Abstract](#) | [Publisher Full Text](#) | [Free Full Text](#) | [F1000 Recommendation](#)
165. Satoh N, Nakamura M, Suzuki M, et al.: Roles of Akt and SGK1 in the Regulation of Renal Tubular Transport. *Biomed Res Int*. 2015; 2015: 971697.
[PubMed Abstract](#) | [Publisher Full Text](#) | [Free Full Text](#) | [F1000 Recommendation](#)
166. Rubinger D, Wald H, Popovtzer MM: 25-Hydroxycholecalciferol and 1,25-dihydroxycholecalciferol enhances phosphaturia in rats with reduced renal mass: evidence for a PTH-dependent mechanism. *Miner Electrolyte Metab*. 1990; 16(6): 348–54.
[PubMed Abstract](#)
167. Gupta A, Winer K, Econs MJ, et al.: FGF-23 is elevated by chronic hyperphosphatemia. *J Clin Endocrinol Metab*. 2004; 89(9): 4489–92.
[PubMed Abstract](#) | [Publisher Full Text](#)

Open Peer Review

Current Referee Status:  

Editorial Note on the Review Process

F1000 Faculty Reviews are commissioned from members of the prestigious F1000 Faculty and are edited as a service to readers. In order to make these reviews as comprehensive and accessible as possible, the referees provide input before publication and only the final, revised version is published. The referees who approved the final version are listed with their names and affiliations but without their reports on earlier versions (any comments will already have been addressed in the published version).

The referees who approved this article are:

Version 1

- ¹ **Olivier Bonny** ^{1,2} ¹ Service of Nephrology, Lausanne University Hospital, Lausanne, Switzerland
² Department of Pharmacology and Toxicology, University of Lausanne, Lausanne, Switzerland
Competing Interests: No competing interests were disclosed.
- ¹ **Orson Moe** ^{1,2} ¹ Department of Physiology, University of Texas Southwestern Medical Center, Dallas, USA
² Charles and Jane Pak Center of Mineral Metabolism and Clinical Research, University of Texas Southwestern Medical Center, Dallas, USA
Competing Interests: No competing interests were disclosed.