

Neuroprotective mechanism of *Kai Xin San*: upregulation of hippocampal insulin-degrading enzyme protein expression and acceleration of amyloid-beta degradation

Na Wang¹, Yong-ming Jia¹, Bo Zhang², Di Xue¹, Maharjan Reeru¹, Yan Li², Shu-ming Huang², Xue-wei Liu^{1,*}

1 Institute of Medicine, Qiqihar Medical University, Qiqihar, Heilongjiang Province, China

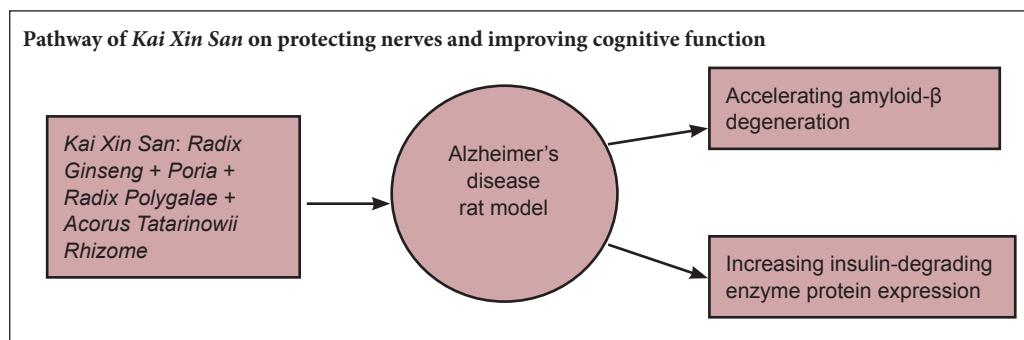
2 Department of Neuroscience, Institute of Traditional Chinese Medicine, Heilongjiang University of Chinese Medicine, Harbin, Heilongjiang Province, China

How to cite this article: Wang N, Jia YM, Zhang B, Xue D, Reeru M, Li Y, Huang SM, Liu XW (2017) Neuroprotective mechanism of *Kai Xin San*: upregulation of hippocampal insulin-degrading enzyme protein expression and acceleration of amyloid-beta degradation. *Neural Regen Res* 12(4):654-659.

Open access statement: This is an open access article distributed under the terms of the Creative Commons Attribution-NonCommercial-ShareAlike 3.0 License, which allows others to remix, tweak, and build upon the work non-commercially, as long as the author is credited and the new creations are licensed under the identical terms.

Funding: This research was supported by the National Natural Science Foundation of China, No. 81303248, 81603321; the Natural Science Foundation of Heilongjiang Province of China, No. H2015028; a grant from the Nursing Program for Young Scholars of Heilongjiang Province of China, No. UNPYSCT-2016116; the Scientific Research Fund for Doctors of Qiqihar Medical University in China, No. QY2016B-09.

Graphical Abstract



*Correspondence to:

Xue-wei Liu, Ph.D.,
lxw_qmu@126.com.

orcid:

0000-0002-0381-7548
(Xue-wei Liu)

doi: 10.4103/1673-5374.205107

Accepted: 2017-02-25

Abstract

Kai Xin San is a Chinese herbal formula composed of *Radix Ginseng*, *Poria*, *Radix Polygalae* and *Acorus Tatarinowii Rhizome*. It has been used in China for many years for treating amnesia. *Kai Xin San* ameliorates amyloid- β ($A\beta$)-induced cognitive dysfunction and is neuroprotective *in vivo*, but its precise mechanism remains unclear. Expression of insulin-degrading enzyme (IDE), which degrades $A\beta$, is strongly correlated with cognitive function. Here, we injected rats with exogenous $A\beta_{42}$ (200 μ M, 5 μ L) into the hippocampus and subsequently administered *Kai Xin San* (0.54 or 1.08 g/kg/d) intragastrically for 21 consecutive days. Hematoxylin-eosin and Nissl staining revealed that *Kai Xin San* protected neurons against $A\beta$ -induced damage. Furthermore, enzyme-linked immunosorbent assay, western blot and polymerase chain reaction results showed that *Kai Xin San* decreased $A\beta_{42}$ protein levels and increased expression of IDE protein, but not mRNA, in the hippocampus. Our findings reveal that *Kai Xin San* facilitates hippocampal $A\beta$ degradation and increases IDE expression, which leads, at least in part, to the alleviation of hippocampal neuron injury in rats.

Key Words: nerve regeneration; neurodegeneration; traditional Chinese medicine; *Kai Xin San*; insulin-degrading enzyme; amyloid- β ; Alzheimer's disease; Chinese herbal compound; $A\beta$ -degrading enzymes; neurons; *Radix Ginseng*; *Radix Polygalae*; *Acorus Tatarinowii Rhizoma*; neural regeneration

Introduction

Amyloid- β ($A\beta$), a key biomolecule in senile plaques, plays a central role in the pathology of Alzheimer's disease (AD) (Amici et al., 2016; Chai et al., 2016; Zhang et al., 2016). In the brain, under physiological conditions, $A\beta$ is constantly generated from amyloid precursor protein and cleaved by β - and γ -secretases (Li et al., 2016; Niu et al., 2016). It is widely

accepted that abnormal accumulation of $A\beta$, containing $A\beta_{42}$ and $A\beta_{40}$, participates in the pathology of AD (Awasthi et al., 2016; Wang, 2016). $A\beta_{42}$, which is hydrophobic and prone to aggregation, seems to be more neurotoxic than $A\beta_{40}$ in AD. It is mostly degraded by $A\beta$ -degrading enzymes, but an imbalance between its generation and degradation leads to pathological $A\beta$ accumulation in AD (Saido, 2013). However,

er, anabolic increases in A β are rarely observed in sporadic AD cases, which constitute 95% of all AD cases (Campion et al., 1999). Several mechanisms can affect A β clearance and degradation, involving A β proteases, low-density lipoprotein receptor-related protein 1, and apolipoprotein E. A β degradation is correlated with A β -degrading enzyme dysfunction, which may explain the accumulation of A β in sporadic AD cases (Leissring, 2016). In addition, insulin-degrading enzyme (IDE) plays a key role in A β degradation, and its dysfunction contributes to the pathology of AD (Zhao et al., 2007).

The Chinese herbal formula *Kai Xin San* (KXS), has been used for treating amnesia for many years. Experimentally, KXS has been shown to improve learning and memory in several paradigms, including models of AD (Hu et al., 2013; Chu et al., 2016). KXS ameliorates the cognitive dysfunction induced by A β *in vivo* (Li et al., 2013) and seems to be involved in the protective effects targeting the neuropathological cascade after A β deposition. However, it is not known whether KXS directly mediates the catabolic metabolism of A β to reduce A β accumulation, though research on the catabolic metabolism of A β is ongoing. Identifying whether KXS can affect the expression of A β -degrading enzymes will provide important insight into treatment options for AD. To this end, we investigated the efficacy of KXS on A β degradation, and explored its mechanism in light of the catabolic role of IDE in A β metabolism. We demonstrate that KXS accelerates A β degradation by increasing IDE expression in the brain.

Materials and Methods

Animals

230 specific-pathogen-free Wistar rats (115 males, 115 females), weighing 200–240 g, were provided by the Laboratory Animal Center, Heilongjiang University of Chinese Medicine, China (license No. SYXK (Hei) 2013-012). Rats were housed in an animal laboratory at 22 \pm 2°C and 60 \pm 3% humidity, under a 12-hour dark/light cycle. The rats received a standard diet and free access to water. The animal facilities and protocols were approved by the Institutional Animal Care and Use Committee, Heilongjiang University of Chinese Medicine (No. 2014HZYLL-018). All procedures conformed with the National Institutes of Health Guide for the Care and Use of Laboratory Animals (NIH Publications No. 8023, revised, 1978).

Drugs and KXS extraction

Radix Ginseng (*Renshen*), *Poria* (*Fuling*), *Radix Polygalae* (*Yuanzhi*) and *Acorus Tatarinowii Rhizoma* (*Shichangpu*) were purchased from Harbin Tongrentang Drug Company (Harbin, China). From these components, we prepared KXS as described previously (Liu et al., 2014). In brief, the four dried raw herbs were mixed together in a weight ratio of 3:3:2:2 (*Radix Ginseng* 60 g, *Poria* 60 g, *Radix Polygalae* 40 g, *Acorus Tatarinowii Rhizoma* 40 g), and decocted/extracted by refluxing for 1.5 hours in 2,000 mL boiling 60% ethanol (1:10, w/v). The extracts were passed through filter paper, dried under a vacuum and stored at –80°C. The extracts were mainly characterized by 75 chemical constituents, identified by ultra-performance liquid chromatography tandem mass spectrometry.

A β and KXS administration

200 rats were equally and randomly allocated to four groups: control, model, low-dose KXS (KXSL) and high-dose KXS (KXSH; **Table 1**). A β_{42} (Wako Pure Chemical Industries, Ltd., Japan) was dissolved in dimethyl sulfoxide and diluted with 0.9% saline. For intrahippocampal A β_{42} injection (all groups except control), rats were anesthetized with 3% pentobarbital sodium (50 mg/kg) and fixed in a stereotaxic instrument as previously described (Asle-Rousta et al., 2013). A β_{42} solution was injected into the hippocampus bilaterally at the following coordinates: 3.6 mm posterior to the bregma, 2.2 mm lateral to the midline and 4.0 mm below the top of the skull. A total of 10 μ L per rat (5 μ L each side, 200 μ M) was injected over 10 minutes. The needle was slowly withdrawn from the brain, the surgical incision was sutured, and penicillin sodium was administered to prevent infection. Control rats underwent the same procedure, but same volume of saline was injected instead of of A β . Subsequently, rats received KXS (KXSL group, 0.54 g/kg/d; KXSH group, 1.08 g/kg/d) or an equivalent volume of saline (control and model groups) intragastrically once a day for 21 consecutive days. Forty rats were used for histology and Nissl staining (n = 10 per group) and 160 for the enzyme-linked immunosorbent assay (ELISA) (n = 40 per group).

Histological staining

Rats were anesthetized with 10% (3.5 mL) chloral hydrate and decapitated after perfusion with 10% formalin and the brain was removed immediately. Brains from the rats in each group (**Table 1**) were fixed with 10% formalin for hematoxylin-eosin and Nissl staining. The tissue containing the hippocampus was dehydrated through a graded series of alcohol (75%, 85%, 95%, and 100%), embedded in paraffin, and sliced into 4- μ m-thick sections. These sections were deparaffinized and subjected to hematoxylin-eosin and Nissl staining (Ooigawa et al., 2006; Zhou et al., 2012). Under a microscope (Olympus, Tokyo, Japan), a 300 \times 100 μ m² field of view was selected at random to count the number of injured cells (showing nuclear shrinkage or disappearance) and total cells in the hippocampal dentate gyrus, and the percentage of injured cells was calculated.

ELISA assay for injected A β_{42}

At five time points after injection (12, 24, 48, 96 and 168 hours; n = 8 rats per time point), brain A β_{42} concentration was measured. Rats were anesthetized with 10% (3.5 mL) chloral hydrate and decapitated. The brains were quickly dissected on ice at the allocated time-point. For ELISA, brains were homogenized in 70% formic acid buffer (1:10 w/v) for 1 hour. The lysates were centrifuged at 12,000 \times g for 30 minutes. The supernatants were collected and neutralized with 1 M Tris-base solution. The solution containing A β_{42} was measured using a specific and sensitive sandwich ELISA kit (Wako Pure Chemical Industries, Ltd., Japan). Total protein concentration was measured using the BCA method.

Table 1 Group assignment and drug treatment

Experiments	n	Groups	A β injection to hippocampus	Orally given KXS (g/kg/d)	Duration for KXS treatment (day)
Histological staining and Nissl staining	40	Control (n = 10)	-	-	21
		Model (n = 10)	+	-	21
		KXSL (n = 10)	+	0.54	21
		KXSH (n = 10)	+	1.08	21
ELISA for injected A β_{42}	160	Control (n = 40)*	-	-	21
		Model (n = 40)*	+	-	21
		KXSL (n = 40)*	+	0.54	21
		KXSH (n = 40)*	+	1.08	21
Western blot assay and real-time PCR	30	Control (n = 10)	-	-	21
		KXSL (n = 10)	-	0.54	21
		KXSH (n = 10)	-	1.08	21

KXS: *Kai Xin San*; KXSL: low-dose KXS; KXSH: high-dose KXS; A β : amyloid-beta; ELISA: enzyme linked immunosorbent assay; PCR: polymerase chain reaction. *n = 8 rats per time point (12, 24, 48, 96, or 168 hours after A β_{42} injection); +: administered; -: not administered.

Table 2 Sequences of primers used for real-time polymerase chain reaction

Gene	Sequences (5'-3')	Product size (bp)
IDE	Forward: AGT TAA AAG AAG CCC TCG ATG	160
	Reverse: TGC TCA ATA AGG GTG TCT TCT AC	
β -Actin	Forward: AGA GGC ATC CTG ACC CTG AAG	163
	Reverse: GGT TGG CCT TAG GGT TCA GAG	

IDE: Insulin-degrading enzyme.

Western blot assay

Thirty rats were equally and randomly allocated to three groups (Table 1). Rats were anesthetized with 10% (3.5 mL) chloral hydrate and decapitated. Brains were removed on ice and hippocampi were dissected out for western blot and real time-polymerase chain reaction (PCR) assays. To measure IDE content, hippocampal tissue was lysed in radioimmunoprecipitation assay buffer containing protease inhibitor. Protein content was determined using the Bradford method. Samples were mixed with an equal volume of 2 \times loading buffer and proteins were denatured by boiling at 100°C for 5 minutes. Protein samples (2 μ g/ μ L) were resolved using sodium dodecyl sulfate polyacrylamide gel electrophoresis with a 10% gel and transferred to polyvinylidene fluoride membranes. Blots were blocked in 5% non-fat milk for 2 hours at room temperature, then incubated with primary polyclonal antibody against human IDE (1:400; Santa Cruz Biotechnology, Santa Cruz, CA, USA) overnight at 4°C. Immunoreactive bands were probed with a horseradish peroxidase-linked secondary polyclonal antibody (1:800; Beyotime Institute of Biotechnology, Haimen, China) for 2 hours. Enhanced chemiluminescence detection (Beyotime Institute of Biotechnology, Shanghai, China) was used to quantify the optical densities of immunoreactive bands. All protein bands were converted to gray values and compared against the internal reference protein (β -actin, Beyotime Institute of Biotechnology, Shanghai, China). Protein expression was quantified using Gel-Pro Analyzer 3.0 software (Media Cybernetics, Inc., Rockville, MD, USA).

Real time-PCR for detecting IDE mRNA

Total hippocampal RNA was extracted using TRIzol Reagent (TaKaRa Biotechnology (Dalian) Co., Ltd., Dalian, China) according to the manufacturer's protocol. RNA concentration was then measured using ultraviolet spectroscopy. Total RNA was used to prepare cDNA by reverse transcription using a PrimeScript RT reagent kit (TaKaRa Biotechnology (Dalian) Co., Ltd.). For detection of IDE mRNA, primers were designed using Primer 5 software (downloaded from <https://www.genscript.com/ssl-bin/app/primer>) (Table 2). cDNA was amplified using a SYBR Premix Ex Taq kit (TaKaRa Biotechnology (Dalian) Co., Ltd.). The PCR protocol consisted of denaturation at 95°C for 30 seconds followed by 40 denaturation and annealing cycles (95°C for 5 seconds, 60°C for 34 seconds). β -Actin was used as an internal reference. IDE mRNA expression was quantified using the $2^{-\Delta\Delta C_t}$ method.

Statistical analysis

All data, expressed as the mean \pm SD, were analyzed using SPSS 13.0 software (SPSS, Chicago, IL, USA). One-way analysis of variance was used for comparisons of multiple groups and the least significant difference test was used between two groups. $P < 0.05$ was considered significant.

Results

Effect of KXS on neuronal injury induced by hippocampal A β_{42} injection

Hematoxylin-eosin and Nissl staining were performed to investigate the neuroprotective effect of KXS. As expected, A β_{42} injection induced hippocampal neuronal injury, which was prevented by KXS. Hematoxylin-eosin staining revealed irregular neurons and neuronal death around the injection site (Figure 1B). However, neuronal injuries were markedly less severe after treatment with KXS (Figure 1C, D), and the number of injured neurons in the KXS group was significantly lower than in the model group ($F = 23.5$; $P = 0.03$ and $P < 0.005$ Figure 1E). Accordingly, Nissl staining also revealed typical neuronal pathological changes, including neuronal loss and nucleus shrinkage or disappearance, in the hippocampal den-

tate gyrus in the model group (Figure 2B), and were reversed significantly after treatment with KXS (Figure 2C, D). The proportion of injured neurons was significantly lower in the KXSL group ($F = 20.6$; $P = 0.04$) and KXSH group ($P = 0.007$) than in the model group (Figure 2E).

KXS effect on degradation of A β_{42}

We explored why KXS reduces A β_{42} -induced histological injury. A β_{42} levels in all groups declined between 6 and 96 hours, indicating that some A β_{42} clearance occurred without treatment. However, at 12, 24, 48, 96 and 168 hours, A β_{42} levels were significantly lower in the KXS groups than in the model group, and lower in the KXSH group than in the KXSL group (Figure 3).

Effect of KXS on IDE mRNA and protein expression

To further explore the KXS-induced reduction in A β_{42} levels, hippocampal IDE protein expression was investigated by western blot assay. Rats in the KXS groups showed significant upregulation of IDE protein after 168 hours compared with the model group ($P < 0.01$). IDE protein expression increased more in the KXSH group than in the KXSL group (Figure 4A). However, no significant difference in IDE mRNA expression was found between the KXS groups and the model group (Figure 4B). These results indicate that KXS accelerated A β degradation by upregulating IDE expression in the brain.

Discussion

KXS treatment improves the cognitive dysfunction induced by intrahippocampal A β injection (Li et al., 2013). Moreover, rat plasma containing KXS alleviated A β_{42} -induced damage in PC12 cells (Wen et al., 2012). These results tightly link the pharmacological targets of KXS to A β_{42} . The present study showed that KXS prevented neuronal injury induced by A β_{42} and suggested that the therapeutic efficacy of KXS was related to A β in treating cognitive dysfunction.

KXS improves learning and memory in several paradigms, including experimental AD (Hu et al., 2013). However, whether KXS can affect A β degradation and clearance is not clear. The present results show that A β_{42} levels were significantly reduced after treatment with KXS. Because the excessive accumulation of A β is regarded as an essential upstream process in the AD pathogenesis cascade, we speculated that KXS might promote A β degradation.

Although insulin was long considered the main substrate for IDE, it was recently shown that IDE also degrades A β into peptides in the brain (Baranello et al., 2015). In addition, the process of substrate degradation by IDE has been elucidated: a proteolytic chamber, formed by the N and C terminal units of IDE, cleaves only peptides of up to 70 amino acids (Shen et al., 2006). In the brain, IDE is secreted from neurons and microglia, and A β degradation takes places extracellularly as well as in the cell membrane (Qiu et al., 1998; Zhang et al., 2013). Some studies reported an association of polymorphisms in the IDE locus with the risk of AD and plasma A β levels (Vekrellis et al., 2000; Carrasquillo et al., 2010; Cheng et al., 2015). Most clinical studies con-

firm that IDE activity or expression is lower in AD and in individuals at high risk of AD (Perez et al., 2000; Del Campo et al., 2015). Moreover, an increase of cerebral endogenous A β was found after IDE inhibition or knockout (Shen et al., 2006). These studies suggest that IDE participates in the degradation of A β , and that its dysfunction contributes to the increase of A β in the brain. Therefore, in our study, we explored whether KXS would alter IDE expression.

Indeed, there was a significant increase in IDE protein expression after treatment with KXS, suggesting that this is an important reason for the decrease in A β_{42} . Consistent with this, some active components from KXS have the ability to increase the protein level and activity of IDE. For instance, ginsenoside Rg1, one of the major active ingredients of KXS, can increase IDE expression by upregulating PPAR γ , leading to lower levels of A β_{42} in the hippocampus (Quan et al., 2013). Ginsenosides Rg3 and Rb1, which act on the insulin signal transduction pathway, also can upregulate IDE protein expression, implying that the insulin pathway may be involved in regulating IDE expression (Gu et al., 2014; Jang et al., 2015). Together, these findings suggest that KXS and its active constituents can increase IDE expression. However, according to our PCR results, the mRNA level of IDE did not change. There are a number of possible reasons for these inconsistent changes. One is that rapid transcription coupled with rapid degradation will result in no change in RNA survival and availability for translation, and therefore cannot account for increased protein production. Conversely, KXS may regulate post-transcriptional changes, such as increased translation efficiency or reduced protein degradation, without affecting the mRNA level of IDE (Rodnina, 2016). These complicated molecular mechanisms represent an even greater challenge and should be addressed in subsequent studies.

In summary, the results of the present study demonstrate for the first time that KXS accelerates A β degradation by upregulating IDE protein expression and improving cognitive dysfunction. KXS is a promising agent for the treatment of AD.

Author contributions: NW designed the study and wrote the paper. YMJ provided critical revision of the paper for intelligent content. BZ, YL, DX, and MR analyzed data. SMH designed the study. XWL designed the study, analyzed the data, and wrote the paper. All authors approved the final version of the paper.

Conflicts of interest: None declared.

Plagiarism check: This paper was screened twice using CrossCheck to verify originality before publication.

Peer review: This paper was double-blinded and stringently reviewed by international expert reviewers.

References

- Amici S, Iannizzi P, Di Pucchio A, Abraha I, Montedori A, Chattat R, Vanacore N. Can early counselling and support for Alzheimer's disease caregivers reduce burden? Study protocol for a multicenter randomized controlled trial. *Clin Trials Degener Dis* 2016;1:99-106.
- Asle-Rousta M, Kolahdooz Z, Oryan S, Ahmadiani A, Dargahi L (2013) FTY720 (fingolimod) attenuates beta-amyloid peptide (A β_{42})-induced impairment of spatial learning and memory in rats. *J Mol Neurosci* 50:524-532.
- Awasthi M, Singh S, Pandey VP, Dwivedi UN (2016) Alzheimer's disease: an overview of amyloid beta dependent pathogenesis and its therapeutic implications along with in silico approaches emphasizing the role of natural products. *J Neurol Sci* 361:256-271.

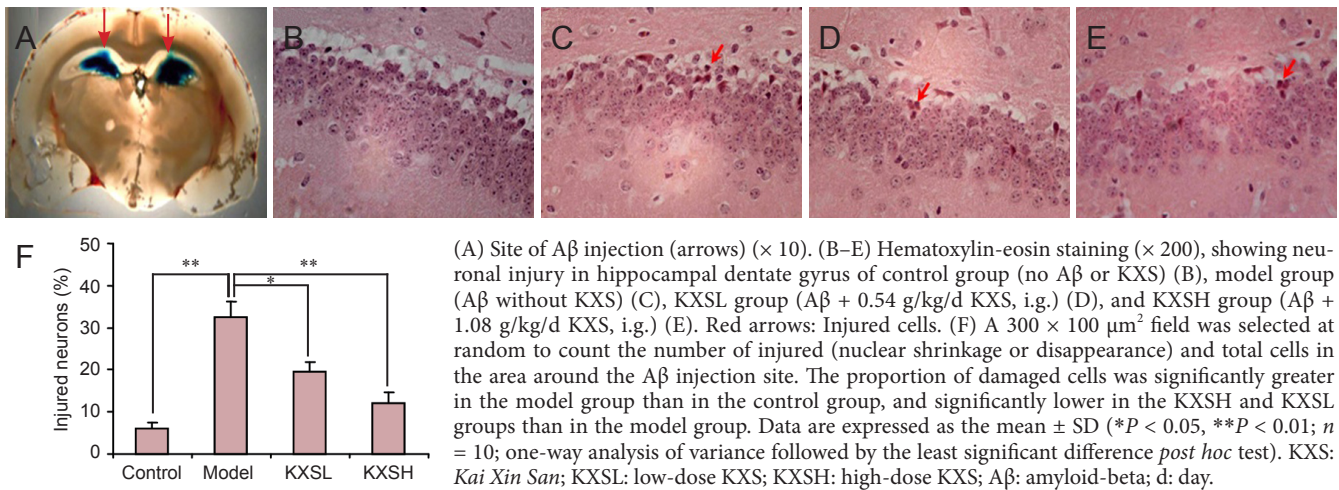


Figure 1 Effect of KXS on neuronal injury in the hippocampal dentate gyrus of rats after Aβ₄₂ injection.

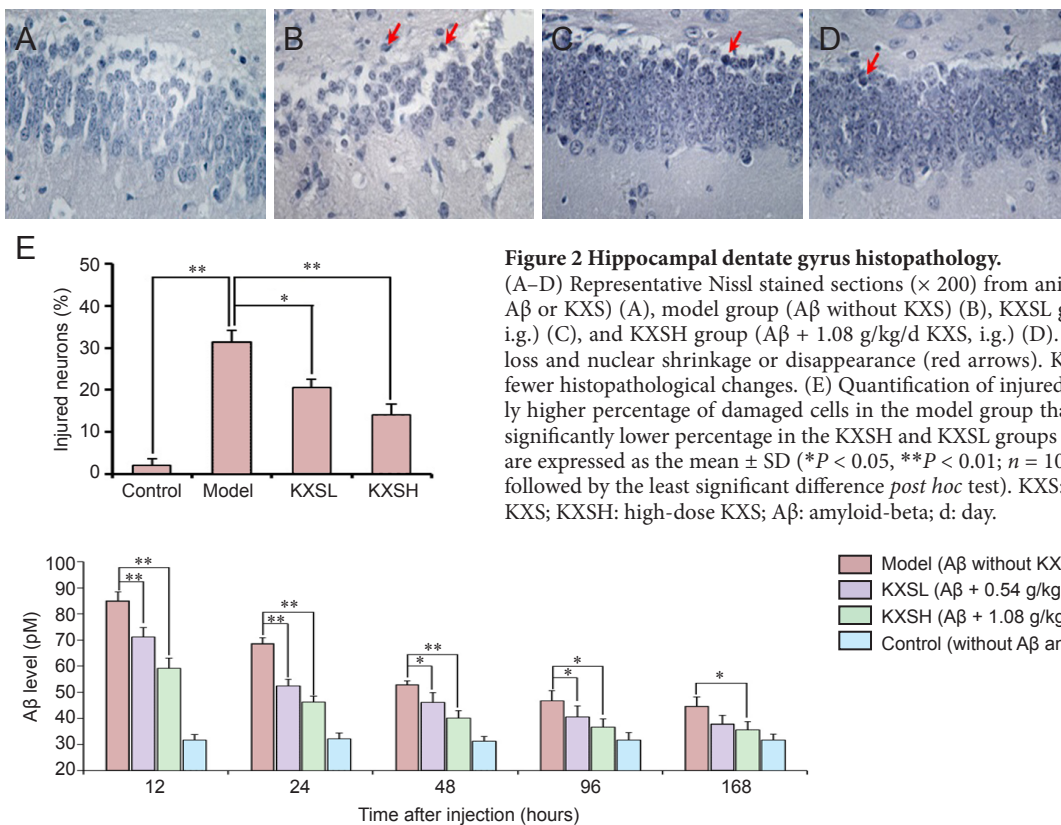


Figure 2 Hippocampal dentate gyrus histopathology.

(A–D) Representative Nissl stained sections (× 200) from animals in the control group (no Aβ or KXS) (A), model group (Aβ without KXS) (B), KXSL group (Aβ + 0.54 g/kg/d KXS, i.g.) (C), and KXSH group (Aβ + 1.08 g/kg/d KXS, i.g.) (D). Model group shows neuronal loss and nuclear shrinkage or disappearance (red arrows). KXSL and KXSH groups show fewer histopathological changes. (E) Quantification of injured cells. There was a significantly higher percentage of damaged cells in the model group than in the control group, and a significantly lower percentage in the KXSH and KXSL groups than in the model group. Data are expressed as the mean ± SD (**P* < 0.05, ***P* < 0.01; *n* = 10; one-way analysis of variance followed by the least significant difference *post hoc* test). KXS: *Kai Xin San*; KXSL: low-dose KXS; KXSH: high-dose KXS; Aβ: amyloid-beta; d: day.

Baranello RJ, Bharani KL, Padmaraju V, Chopra N, Lahiri DK, Greig NH, Pappolla MA, Sambamurti K (2015) Amyloid-beta protein clearance and degradation (ABCD) pathways and their role in Alzheimer's disease. *Curr Alzheimer Res* 12:32-46.

Campion D, Dumanchin C, Hannequin D, Dubois B, Belliard S, Puel M, Thomas-Anterion C, Michon A, Martin C, Charbonnier F, Raux G, Camuzat A, Penet C, Mesnage V, Martinez M, Clerget-Darpoux F, Brice A, Frebourg T (1999) Early-onset autosomal dominant Alzheimer disease: prevalence, genetic heterogeneity, and mutation spectrum. *Am J Hum Genet* 65:664-670.

Carrasquillo MM, Belbin O, Zou F, Allen M, Ertekin-Taner N, Ansari M, Wilcox SL, Kashino MR, Ma L, Younkin LH, Younkin SG, Younkin CS, Dincman TA, Howard ME, Howell CC, Stanton CM, Watson CM, Crump M, Vitart V, Hayward C, et al. (2010) Concordant association of insulin degrading enzyme gene (IDE) variants with IDE mRNA, Abeta, and Alzheimer's disease. *PLoS One* 5:e8764.

Chai GS, Wang YY, Yasheng A, Zhao P (2016) Beta 2-adrenergic receptor activation enhances neurogenesis in Alzheimer's disease mice. *Neural Regen Res* 11:1617-1624.

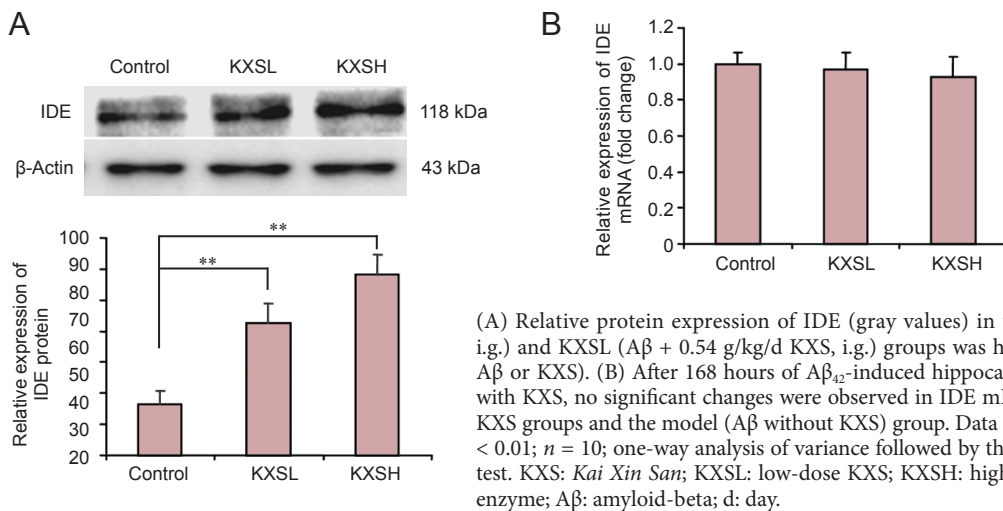


Figure 4 KXS upregulates IDE protein expression but has no effect on IDE mRNA expression.

- Cheng H, Wang L, Shi T, Shang Y, Jiang L (2015) Association of insulin degrading enzyme gene polymorphisms with Alzheimer's disease: a meta-analysis. *Int J Neurosci* 125:328-335.
- Chu H, Zhang A, Han Y, Lu S, Kong L, Han J, Liu Z, Sun H, Wang X (2016) Metabolomics approach to explore the effects of Kai-Xin-San on Alzheimer's disease using UPLC/ESI-Q-TOF mass spectrometry. *J Chromatogr B Analyt Technol Biomed Life Sci* 1015-1016:50-61.
- Del Campo M, Stargardt A, Veerhuis R, Reits E, Teunissen CE (2015) Accumulation of BRI2-BRICHOS ectodomain correlates with a decreased clearance of A β by insulin degrading enzyme (IDE) in Alzheimer's disease. *Neurosci Lett* 589:47-51.
- Gu WJ, Liu D, Zhang MR, Zhang H (2014) Effect of ginsenoside Rb1 on insulin signal transduction pathway in hippocampal neurons of high-glucose-fed rats. *Zhongguo Zhongyao Zazhi* 39:1064-1068.
- Hu Y, Liu M, Liu P, Yan JJ, Liu MY, Zhang GQ, Zhou XJ, Yu BY (2013) Effect of kai xin san on learning and memory in a rat model of paradoxical sleep deprivation. *J Med Food* 16:280-287.
- Jang SK, Yu JM, Kim ST, Kim GH, Park da W, Lee DI, Joo SS (2015) An $A\beta_{42}$ uptake and degradation via Rg3 requires an activation of caveolin, clathrin and $A\beta$ -degrading enzymes in microglia. *Eur J Pharmacol* 758:1-10.
- Leissring MA (2016) A β -degrading proteases: therapeutic potential in Alzheimer disease. *CNS drugs* 30:667-675.
- Li L, Luo J, Chen D, Tong JB, Zeng LP, Cao YQ, Xiang J, Luo XG, Shi JM, Wang H, Huang JF (2016) BACE1 in the retina: a sensitive biomarker for monitoring early pathological changes in Alzheimer's disease. *Neural Regen Res* 11:447-453.
- Li Y, Liu B, Liu XW, Huang SM (2013) Mechanism research of Kai Xin Granule on $A\beta$ -induced cognitive impairment in rats. *Zhongyiyao Xinxin* 33:34-38.
- Liu XW, Liu S, Huang SM (2016) Plasma pharmacoc hemistry study of effective extracivet from kai-xin-san on Alzheimer's disease. *Zhongguo Shiyuan Fangjixue Zazhi* 20:179-183.
- Niu Jw, Zhang B, Chen H (2016) Safety and efficacy of human umbilical cord-derived mesenchymal stem cells in patients with Alzheimer's disease: study protocol for an open-label self-control trial. *Clin Trials Degener Dis*;1:1-8.
- Ooigawa H, Nawashiro H, Fukui S, Otani N, Osumi A, Toyooka T, Shima K (2006) The fate of Nissl-stained dark neurons following traumatic brain injury in rats: difference between neocortex and hippocampus regarding survival rate. *Acta Neuropathol* 112:471-481.
- Perez A, Morelli L, Cresto JC, Castano EM (2000) Degradation of soluble amyloid beta-peptides 1-40, 1-42, and the Dutch variant 1-40Q by insulin degrading enzyme from Alzheimer disease and control brains. *Neurochem Res* 25:247-255.
- Qiu WQ, Walsh DM, Ye Z, Vekrellis K, Zhang J, Podlisny MB, Rosner MR, Safavi A, Hersh LB, Selkoe DJ (1998) Insulin-degrading enzyme regulates extracellular levels of amyloid beta-protein by degradation. *J Biol Chem* 273:32730-32738.
- Quan Q, Wang J, Li X, Wang Y (2013) Ginsenoside Rg1 decreases $A\beta$ (1-42) level by upregulating PPAR γ and IDE expression in the hippocampus of a rat model of Alzheimer's disease. *PLoS One* 8:e59155.
- Rodnina MV (2016) The ribosome in action: Tuning of translational efficiency and protein folding. *Protein Sci* 25:1390-1406.
- Saido TC (2013) Metabolism of amyloid beta peptide and pathogenesis of Alzheimer's disease. *Proc Jpn Acad Ser B Phys Biol Sci* 89:321-339.
- Shen Y, Joachimiak A, Rosner MR, Tang WJ (2006) Structures of human insulin-degrading enzyme reveal a new substrate recognition mechanism. *Nature* 443:870-874.
- Vekrellis K, Ye Z, Qiu WQ, Walsh D, Hartley D, Chesneau V, Rosner MR, Selkoe DJ (2000) Neurons regulate extracellular levels of amyloid beta-protein via proteolysis by insulin-degrading enzyme. *J Neurosci* 20:1657-1665.
- Wang GF (2016) Effects of Bushen Yizhi Decoction on Alzheimer's disease model rats induced by D-galactose combined with amyloid-beta 25-35 and the underlying mechanism. *Zhongguo Zuzhi Gongcheng Yanjiu* 20:7307-7313.
- Wen W, Zhang C, Liu M, Huang SM (2012) The rat plasma containing Kai Xin San protected PC12 from $A\beta$ -induced toxicity. *Zhongyiyao Xinxin* 29:80-81.
- Zhang SG, Wang XS, Zhang YD, Di Q, Shi JP, Qian M, Xu LG, Lin XJ, Lu J (2016) Indirubin-3'-monoxime suppresses amyloid-beta-induced apoptosis by inhibiting tau hyperphosphorylation. *Neural Regen Res* 11:988-993.
- Zhang Y, Wang B, Wan H, Zhou Q, Li T (2013) Meta-analysis of the insulin degrading enzyme polymorphisms and susceptibility to Alzheimer's disease. *Neurosci Lett* 541:132-137.
- Zhao Z, Xiang Z, Haroutunian V, Buxbaum JD, Stetka B, Pasinetti GM (2007) Insulin degrading enzyme activity selectively decreases in the hippocampal formation of cases at high risk to develop Alzheimer's disease. *Neurobiol Aging* 28:824-830.
- Zhou X, Song FH, He W, Yang XY, Zhou ZB, Feng X, Zhou LH (2012) Neonatal exposure to sevoflurane causes apoptosis and reduces nNOS protein expression in rat hippocampus. *Mol Med Rep* 6:543-546.

Copypedited by Slone-Murphy J, Wang J, Li CH, Qiu Y, Song LP, Zhao M