

Research Article

Fasting blood glucose to HDL-C ratio as a novel predictor of clinical outcomes in non-diabetic patients after PCI

Qian-Qian Guo^{1,2,*},  Ying-Ying Zheng^{1,2,3,*}, Jun-Nan Tang^{1,2}, Ting-Ting Wu³, Xu-Ming Yang⁴, Zeng-Lei Zhang^{1,2}, Jian-Chao Zhang^{1,2}, Yi Yang³, Xian-Geng Hou³, Meng-Die Cheng^{1,2}, Feng-Hua Song^{1,2}, Zhi-Yu Liu^{1,2}, Kai Wang^{1,2}, Li-Zhu Jiang^{1,2}, Lei Fan^{1,2}, Xiao-Ting Yue^{1,2}, Yan Bai^{1,2}, Xin-Ya Dai^{1,2}, Ru-Jie Zheng^{1,2},  Xiang Xie³ and Jin-Ying Zhang^{1,2}

¹Department of Cardiology, First Affiliated Hospital of Zhengzhou University, Zhengzhou 450052, P.R. China; ²Key Laboratory of Cardiac Injury and Repair of Henan Province, Zhengzhou, China; ³Department of Cardiology, First Affiliated Hospital of Xinjiang Medical University, Urumqi 830011, P.R. China; ⁴Department of Cardiology, The First Affiliated Hospital, and College of Clinical Medicine of Henan University of Science and Technology, Luoyang 471003, China

Correspondence: Jin-Ying Zhang (jyzhang@zzu.edu.cn) or Xiang Xie (xiangxie999@sina.com) or Ying-Ying Zheng (zhengying527@163.com)



Background The present study was to assess the prognostic value of fasting blood glucose to high-density lipoprotein cholesterol ratio (GHR) in non-diabetic patients with coronary artery disease (CAD) undergoing percutaneous coronary intervention (PCI).

Methods and results A total of 6645 non-diabetic patients from two independent cohorts, the CORFCHD-PCI study ($n=4282$) and the CORFCHD-ZZ ($n=2363$) study, were enrolled in Clinical Outcomes and Risk Factors of Patients with Coronary Heart Disease after PCI. Patients were divided into two groups according to the GHR value. The primary outcome included all-cause mortality (ACM) and cardiac mortality (CM). The average follow-up time was 36.51 ± 22.50 months. We found that there were significant differences between the two groups in the incidences of ACM ($P=0.013$) and CM ($P=0.038$). Multivariate Cox regression analysis revealed GHR as an independent prognostic factor for ACM. The incidence of ACM increased 1.284-times in patients in the higher GHR group (hazard ratio [HR]: 1.284 [95% confidence interval [CI]: 1.010–1.631], $P<0.05$). Kaplan–Meier survival analysis suggested that patients with high GHR value tended to have an increased accumulated risk of ACM. However, we did not find significant differences in the incidence of major adverse cardiac events, main/major adverse cardiovascular and cerebrovascular events (MACCE), stroke, recurrent myocardial infarction (MI) and bleeding events.

Conclusions The present study indicates that GHR index is an independent and novel predictor of ACM in non-diabetic CAD patients who underwent PCI.

*These authors contributed equally to this work.

Received: 07 August 2020
Revised: 02 November 2020
Accepted: 02 November 2020

Accepted Manuscript online:
03 November 2020
Version of Record published:
26 November 2020

Background

Coronary artery disease (CAD) is one of the most common cardiovascular diseases (CVDs) in the world. Despite great advances achieved in the treatment of CAD, it still has high mortality. CAD is a complicated multifactor disease. Metabolic syndrome (MetS) is a major contributor to the epidemic of CAD [1], MetS includes abdominal obesity, high triglycerides (TGs), low high-density lipoprotein cholesterol (HDL-C), high blood pressure, and elevated fasting blood glucose (FBG) [2]. Muhlestein et al. found abnormalities of fasting glucose (FG) were much more prevalent (60%) than previously appreciated in patients with advanced CAD, they were associated with greater mortality risk than expected, despite elimination of ischemia by percutaneous coronary intervention (PCI) [3]. Dyslipidemia is one

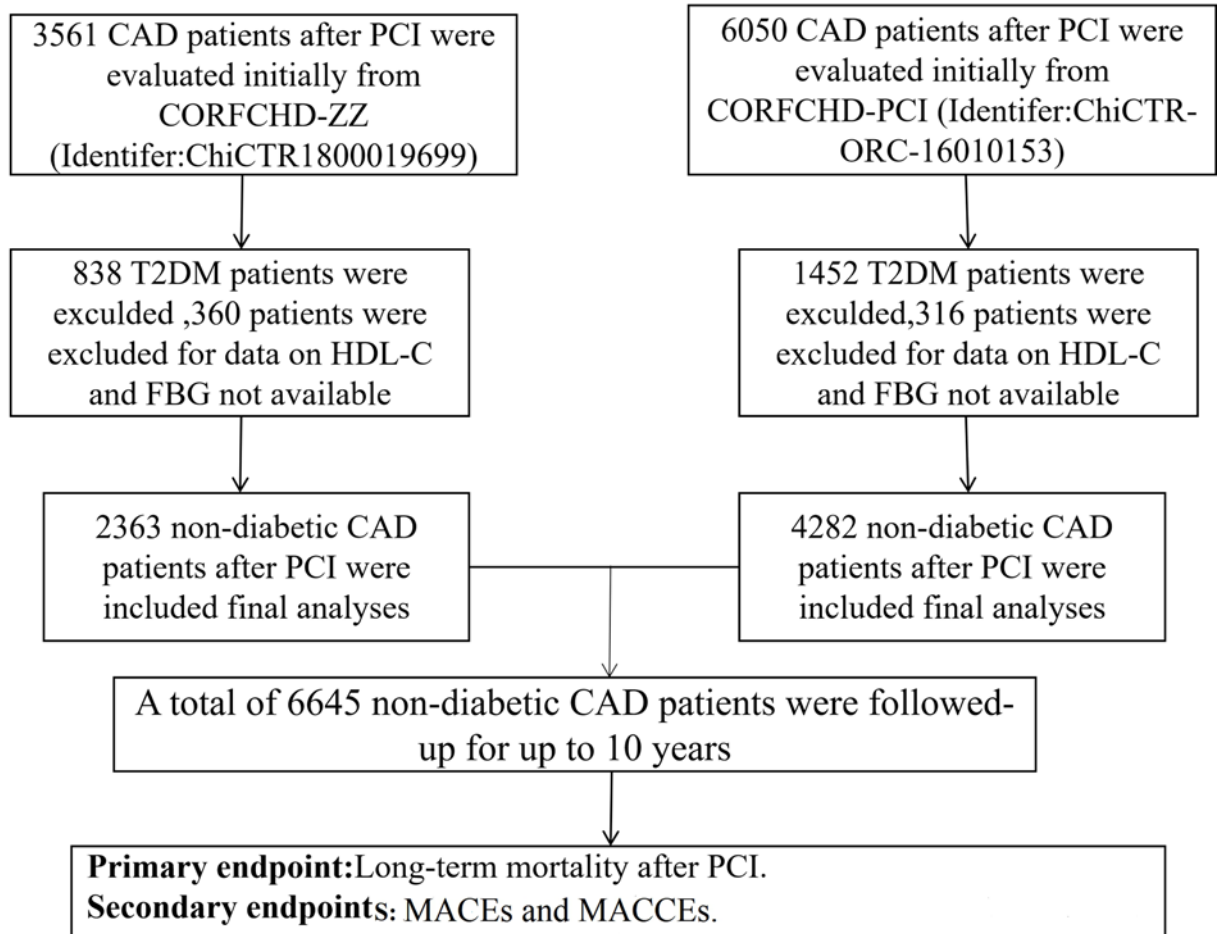


Figure 1. The flowchart of participants' inclusion

of the main risk factors for the development and progression of CVD, epidemiological studies strongly suggested that HDL-C levels were inversely associated with the risk of CAD [4]. Low HDL-C level is strongly associated with CVD development and CVD-related mortality [5]. Diabetes mellitus (DM) is well-established as a primary and secondary risk factor for CAD, it increases the risk of incident myocardial infarction (MI) and death in patients with established CAD [6]. However, there are relatively few studies investigating the prognosis values of FBG to HDL-C ratio (GHR) in non-diabetic patients with PCI. Therefore, our study examined the GHR index of non-diabetic patients with CAD undergoing PCI and discussed the effect of GHR index on long-term clinical outcomes.

Methods

Study design and population

CAD patients who underwent PCI at the First Affiliated Hospital of Zhengzhou University and First Affiliated Hospital of Xinjiang Medical University from January 2008 to December 2017 were included in the present study. DM patients and those with no HDL-C and FBG data were excluded from analysis. Finally, a total of 6645 non-diabetic CAD patients were enrolled in the present study (Figure 1). The details of the design are registered on <http://www.chictr.org.cn> (identifier: ChiCTR1800019699 and ChiCTR-ORC-16010153). The inclusion criteria were CAD patients including non-ST-segment elevation acute coronary syndrome (ACS), ST-segment elevation ACS and stable angina, who were undergoing coronary angiography, showing stenosis $\geq 70\%$ and receiving at least one stent via implantation. We excluded patients who had DM, serious heart failure, rheumatic heart disease, valvular heart disease, congenital heart disease, pulmonary heart disease, and serious dysfunction of the liver or kidney. The present study complies with the Declaration of Helsinki and the protocol was approved by the ethics committee of the First Affiliated Hospital of Zhengzhou University and First Affiliated Hospital of Xinjiang Medical University. Because of the

retrospective design of the study, the need to obtain informed consent from eligible patients was waived by the ethics committee.

Definitions

Hypertension was defined as a systolic blood pressure (SBP) of ≥ 140 mmHg and/or a diastolic blood pressure (DBP) of ≥ 90 mmHg on at least three resting measurements on at least two separate healthcare visits according to the American Heart Association recommendations or with the use of any antihypertensive drug [7]. DM was defined as FBG ≥ 7.1 mmol/l or 2-h post-load glucose ≥ 11.1 mmol/l or current use of anti-diabetic medications [8]. Smoking and drinking status were defined as current tobacco and alcohol use.

Clinical and demographic characteristics collection

Data on clinical and demographic characteristics, including age, sex, history of hypertension, family history of CAD, and smoking and drinking status, were collected from medical records. Imaging and laboratory data, including FBG, blood urea nitrogen (BUN), creatinine (Cr), uric acid (UA), lipid parameters and angiographic results were noted. During the follow-up period, the use of β -blockers, angiotensin-converting enzyme inhibitors (ACEIs), angiotensin II receptor blockers (ARBs), statins, aspirins, clopidogrels, ticagrelors and calcium channel blockers (CCBs) were recorded. GHR index was calculated by the formula [FBG (mmol/l)/HDL-C (mmol/l)].

End points

The primary end point was the long-term mortality, including all-cause mortality (ACM) and cardiac mortality (CM), during the follow-up. The secondary end points were major adverse cardiovascular events (MACEs) defined as the combination of cardiac death, recurrent MI and target vessel reconstruction, and main/major adverse cardiac and cerebrovascular events (MACCEs) which have been described previously [9]. Briefly, deaths were considered a cardiac condition unless a non-cardiac definite cause was identified. Recurrent MI was defined as a new Q wave, and an increased concentration of creatine kinase MB to greater than five-times the upper limit of the normal range within 48 h after procedure or new Q waves or an increase in creatine kinase MB concentration to greater than the upper limit of the normal range plus ischemic symptoms or signs, if occurring more than 48 h after the procedure [9]. Stroke is defined as a sudden onset of vertigo, numbness, aphasia, or dysarthria caused by cerebrovascular disease, including hemorrhage, embolism, thrombosis, aneurysm rupture, and persisting for > 24 h [9]. Bleeding events were determined according to the Bleeding Academic Research Consortium (BARC) standard [10]. Target vessel revascularization (TVR) was defined as any repetitive revascularization in a treated vessel where there was stenosis of at least 50% diameter in the presence of ischemic signs or symptoms or stenosis of at least 70% in the absence of ischemic signs or symptoms [9]. All incidents were determined by an adjudication committee that was blinded to the group of patients. All events were adjudicated by an event adjudication committee blinded to the group of the patients.

Follow-up

In our study, the enrolled patients would receive regular follow-up after discharge by office visits or by telephone interview. And the patients were followed up for at least 2 years, and the longest follow-up time was 10 years. During the follow-up, the compliance of the drugs and adverse events were assessed by trained clinical physicians carefully.

Statistical analyses

All analyses were performed using the SPSS 23.0 for Windows statistical software (SPSS Inc, Chicago, Illinois, United States). Continuous data are presented as the mean \pm standard deviation. Categorical data are presented as the frequencies and percentages. The GHR was analyzed as a continuous variable categorized into two groups on the basis of the GHR cut-off value of 6.30. The cut-off value (6.30) is according to the analysis of the ROC curve for the baseline data of the study population. To compare parametric continuous variables, Student's *t* tests were used, and to compare non-parametric continuous variables, Mann-Whitney U tests were used. Chi-squared (χ^2) tests were used to compare categorical variables. Multivariate Cox regression analysis was used for determination of independent parameters for prognosis. Sequential models were developed to examine the incremental prognostic value of the parameters. Incremental factors added to the model at each step were considered significant when the difference in the log likelihood associated with each model corresponded to $P < 0.05$. Long-term survival was analyzed using the Kaplan-Meier method. The *P*-values were two-sided, and $P < 0.05$ was considered significant.

Table 1 Baseline characteristics

Variables	GHR index		χ^2 or T value	P
	Low (<6.30; n=4543)	High (\geq 6.30; n=2102)		
Age (years)	60.90 \pm 10.98	59.47 \pm 11.09	4.922	< 0.001
Gender (male)	3284 (72.3%)	1621 (77.1%)	17.345	< 0.001
Smoking	1664 (36.6%)	880 (41.9%)	16.682	< 0.001
Alcohol drinking	1080 (23.8%)	620 (29.5%)	24.722	< 0.001
Family history	308 (11.7%)	197 (11.9%)	0.020	0.884
HR (bpm)	74.29 \pm 16.20	75.50 \pm 11.60	-3.086	0.002
Hypertension	1978 (43.5%)	871 (41.4%)	2.594	0.110
SBP (mmHg)	128.80 \pm 18.56	127.39 \pm 18.96	2.831	0.005
DBP (mmHg)	77.43 \pm 11.41	77.05 \pm 11.67	1.246	0.213
FBG (mmol/l)	4.90 \pm 0.75	5.64 \pm 0.82	-34.215	< 0.001
BUN (mmol/l)	5.52 \pm 2.86	5.64 \pm 3.32	-1.457	0.145
Cr (mmol/l)	73.55 \pm 22.94	76.96 \pm 28.57	-4.785	< 0.001
WBC ($\times 10^9$)	7.01 \pm 2.27	7.52 \pm 2.54	-8.197	< 0.001
eGFR (%)	107.46 \pm 199.78	102.46 \pm 170.94	0.991	0.322
UA (mmol/l)	315.01 \pm 86.45	321.21 \pm 94.42	-32.130	< 0.001
TG (mmol/l)	1.60 \pm 1.00	2.16 \pm 1.44	-18.212	< 0.001
TC (mmol/l)	3.99 \pm 1.07	3.83 \pm 1.08	5.824	< 0.001
LDL (mmol/l)	2.48 \pm 0.90	2.37 \pm 0.87	4.603	< 0.001
CCB (n,%)	625 (13.8)	253 (12.1)	3.482	0.067
β -blocker (n,%)	2054 (45.3)	847 (40.5)	13.310	< 0.001
ACEI or ARB (n,%)	1133 (25.0)	477 (22.8)	3.664	0.056
Statin (n,%)	2958 (65.3)	1184 (56.8)	44.349	< 0.001

The bold P-Values are statistically different.

Table 2 Clinical outcomes between two groups

Variables	GHR index		χ^2 or T value	P
	Low (<6.30; n=4543)	High (\geq 6.30; n=2102)		
ACM (n,%)	182 (4.0)	113 (5.4)	6.355	0.013
CM (n,%)	134 (2.9)	83 (3.9)	4.540	0.038
MAcEs (n,%)	519 (11.4)	263 (12.5)	1.638	0.205
MACCEs (n,%)	611 (13.4)	298 (14.2)	0.644	0.420
Stroke (n,%)	103 (2.3)	39 (1.9)	1.166	0.316
Bleeding (n,%)	83 (3.2)	53 (3.2)	0.004	1
Recurrent MI (n,%)	133 (2.9)	57 (2.7)	0.241	0.692

The bold P-Values are statistically different.

Results

Baseline characteristics

We divided the enrolled patients into two groups according to the the GHR value. Baseline characteristics of the two groups are shown in Table 1. There were 4543 patients in the low GHR group and 2102 patients in the high GHR group. Participants with higher GHR values were more likely to be male, with higher levels of Cr, UA, white blood count (WBC), heart rate (HR), FBG and TG, and higher incidence of smoking and alcohol drinking. Higher levels of total cholesterol (TC), low-density lipoprotein cholesterol (LDL-C) and SBP, higher use of β -blocker, statin and older patients were found in the low GHR group (all P-values <0.05). Meanwhile, family history, hypertension, levels of DBP, BUN and estimated glomerular filtration rate (eGFR), use of ACEI or angiotensin receptor antagonist (ARB) and CCB did not show significant difference between the two groups (all P-values >0.05).

Clinical outcomes

As shown in Table 2, for the primary end point, the incidence of ACM in the lower GHR group was 182 (4.0%) and

Table 3 Cox regression analysis results for ACM

Variables	B	SE	Wald	P	HR	95% CI
Gender (male)	-0.060	0.155	0.152	0.696	0.941	0.695–1.275
Age (years)	0.044	0.006	57.393	<0.001	1.045	1.033–1.057
Smoking	-0.017	0.154	0.012	0.914	0.983	0.727–1.331
Alcohol drinking	0.057	0.166	0.117	0.732	1.058	0.765–1.465
Heart rate	0.023	0.005	23.229	<0.001	1.024	1.014–1.033
Cr	0.002	0.002	0.484	0.487	1.002	0.997–1.006
UA	0.001	0.001	2.194	0.139	1.001	1.000–1.002
WBC	0.089	0.023	14.751	<0.001	1.093	1.044–1.143
LDL-C	-0.132	0.069	3.629	0.057	0.877	0.76–1.004
GHR index high vs. low	0.250	0.122	4.180	0.041	1.284	1.010–1.631

Abbreviations: B, regression coefficient; SE, standard error.

Table 4 Cox regression analysis results for CM

Variables	B	SE	Wald	P	HR	95% CI
Gender (male)	-0.166	0.184	0.811	0.368	0.847	0.591–1.215
Age (years)	0.032	0.007	23.691	<0.001	1.033	1.019–1.046
Smoking	-0.071	0.178	0.159	0.690	0.931	0.657–1.321
Alcohol drinking	0.017	0.192	0.007	0.931	1.017	0.698–1.481
Heart rate	0.026	0.006	20.892	<0.001	1.026	1.015–1.037
Cr	0.002	0.002	0.605	0.437	1.002	0.997–1.006
UA	0.001	0.001	3.163	0.075	1.001	1.000–1.003
WBC	0.068	0.028	6.146	0.013	1.071	1.014–1.130
LDL-C	-0.113	0.080	2.006	0.157	0.893	0.763–1.045
GHR index high vs. low	0.222	0.143	2.415	0.120	1.248	0.944–1.651

Abbreviations: B, regression coefficient; SE, standard error.

that in the higher GHR group was 113 (5.4%). The difference was significant ($P=0.013$); also, the incidence of CM between the two groups showed a significant difference (2.9 vs. 3.9%, $P=0.038$). For the secondary end points, we found that there were no significant differences between the two groups in the incidence of MACEs (11.4 vs. 12.5%, $P=0.205$), MACCEs (13.4 vs. 14.2%, $P=0.420$). Besides, there were also no significant differences between the two groups in the incidence of stroke (2.3 vs. 1.9%, $P=0.316$), bleeding events (3.2 vs. 3.2%, $P=1$) or recurrent MI (2.9 vs. 2.7%, $P=0.692$).

Univariate models for each of the predictor variables were created, and variables that were significant ($P<0.05$) in univariate Cox models were entered into multivariate Cox regression analysis. In multivariate Cox regression analysis, after adjusting for the traditional clinical prognostic factors and factors that were significant ($P<0.05$) in univariate Cox models, we found that GHR index could predict poor clinical outcomes. The GHR index was an independent predictor for ACM in the high GHR group. The incidence of ACM increased 1.284-times in patients in the high GHR group (hazard ratio [HR]: 1.284 [95% confidence interval [CI]: 1.010–1.631], $P<0.05$). (Table 3). However, after adjusting factors mentioned above in multivariate Cox regression analysis, the incidence of CM did not show significant differences between two groups ($P>0.05$) (Table 4).

Kaplan–Meier survival analysis suggested that patients with high GHR value exhibited increased accumulated risk of ACM (Log-rank $P=0.017$; Figure 2).

Discussion

The present study investigated the prognostic value of GHR in non-diabetic CAD patients with PCI and found that GHR index was an independent poor prognosis factor at levels ≥ 6.30 . High levels increased long-term ACM 1.284-times. To reduce the risk of confounding factors, we adjusted a comprehensive list of characteristics that influence the risk of cardiovascular events to examine the association between GHR value and clinical outcomes.

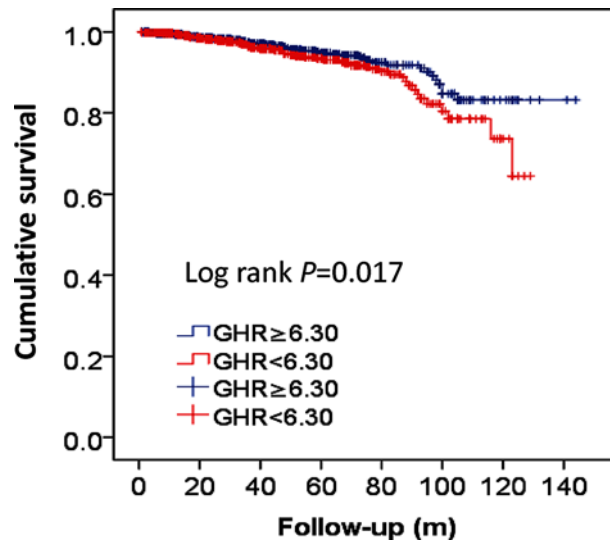


Figure 2. Kaplan–Meier curves for survival analysis of ACM-free survival

Although a large number of novel biomarkers, such as genetic variation [11], miRNA [12] and LncRNA [13] have emerged in recent years, their predictive performances on the outcomes of CAD patients after PCI are limited and performing detection methods for these biomarkers are expensive. Recently, the prognostic role of hematologic biomarkers in patients with CVD has been recognized, such as RDW [14], GPR [15], TG/HDL-C ratio [16], IFG [17], TyG [18], MPV [19], which are efficient biomarkers for predicting clinical outcomes in patients with CAD.

However, there are few researches that focus on non-diabetic CAD patients. In order to find a reliable biomarker to predict the outcome of CVD in non-diabetic CAD patients. Our study first investigated the relation between the GHR value and outcomes in non-diabetic CAD patients after PCI. Since hyperglycemia and low level of HDL-C are well-known risk factors of CVD, the predictive value of FBG and HDL-C on cardiovascular outcomes is less effective. HDL-C plays a protective role in CVDs by enhancing cholesterol metabolism [20], while plasma glucose might be associated with dysfunction of endothelial cells and platelets [21–23]. Their values in predicting CVD risk might be better interpreted when they were considered as a whole.

In the present study, we recruited 6645 non-diabetic CAD patients who underwent PCI. We divided these patients into two groups according to GHR value, we found that patients in the higher GHR group had higher incidence of ACM. Several baseline characteristic variables showed significant differences between the two groups, such as gender, smoking, age, alcohol drinking, Cr, UA, WBC, TC, LDL-C. Considering the impact of these confounding factors and some traditional clinical prognostic factors, we performed multivariable Cox regression analyses. After adjusting for these confounders, the GHR index remained an independent predictor of ACM in non-diabetic CAD patients after PCI. Therefore, the results are credible and cannot be accidental.

The elevated ACM in the higher GHR group can be explained as follows: (1) Dyslipidemia is a major risk factor for atherosclerotic CVD, it includes hypertriglyceridemia, hypercholesterolemia, low high-density lipoprotein levels, high low-density lipoprotein levels etc [24]. HDL-C level is inversely associated with CVD and coronary death, independently from other traditional risk factors [25], HDL-C exerts its cardioprotective effects mainly through its role in reverse cholesterol transport (RCT), including removing cholesterol from peripheral cells in the arterial wall and transporting it to the liver for recycling [26,27]. (2) Hyperglycemia is also a traditional risk factor for CVD [3]. Previous studies have shown that appropriate glycemic control can provide long-term cardiovascular benefits [28,29]. Glucose itself may be atherogenic by increasing oxidative stress [30,31] and vascular inflammation, non-enzymatically glycosylating low-density lipoprotein, other apolipoproteins, and clotting factors [32] and facilitating the formation of advanced glycation end-products in the vessel wall and matrix [33]. (3) Low HDL-C level and high FBG level can accelerate the evolution of coronary atherosclerosis in CAD patients, so elevated ACM and CM in higher GHR group can be credible.

Our study had several limitations. First, this is an observational study with potential selection bias. Second, the sample size was small, and the clinical follow-up duration was not long enough, which might influence the reliability of

results. Third, laboratory parameters were only measured once at admission with a potential bias due to measurement error. Finally, residual compounding factors and unrecorded variables might also affect outcomes.

Conclusion

The present study shows that the baseline GHR index is a simple, reliable, cheap and independent predictor of adverse outcomes in non-diabetic CAD patients who underwent PCI. The GHR index deserves further validation in other populations.

Data Availability

The data will not be shared, because the identified participant information is included in the data.

Competing Interests

The authors declare that there are no competing interests associated with the manuscript.

Funding

This work was supported by the National Natural Science Foundation of China [grant numbers 81870328, 81760043, 81800267].

Author Contribution

Jin-Ying Zhang conceived and designed the study. Xiang Xie, Qian-Qian Guo and Ying-Ying Zheng contributed to the design. Ying-Ying Zheng analyzed the data. Qian-Qian Guo performed the study. Jun-Nan Tang, Ting-Ting Wu, Xu-Ming Yang made contributions to the revision of the manuscript. Zeng-Li Zhang, Jian-Chao Zhang, Yi Yang, Xian-Geng Hou, Meng-Die Cheng, Feng-Hua Song, Zhi-Yu Liu, Kai Wang, Li-Zhu Jiang, Lei Fan, Xiao-Ting Yue, Yan Bai, Xin-Ya Dai and Ru-Jie Zheng participated in the collection of the data. All authors read and critically revised the final manuscript. All authors read and approved the final manuscript.

Ethics Approval and Consent to Participate

The present study protocol was approved by the ethics committee of the First Affiliated Hospital of Zhengzhou University and First Affiliated Hospital of Xinjiang Medical University and was in line with the Declaration of Helsinki. Due to the retrospective design of the study, the need to obtain informed consent from eligible patients was waived by the ethics committee. IRB: The First Affiliated Hospital of Zhengzhou University (Reference number: 2019-ky-005) and The First Affiliated Hospital of Xinjiang Medical University (Reference number: XYDYFY-1600871).

Consent for Publication

All authors have reviewed the final version of the manuscript and approved its publication.

Trial Registration

Chinese Clinical Trial Registry. ChiCTR1800019699 and ChiCTR-ORC-16010153. Registered 14 December 2016 and 24 November 2018 (<http://www.chictr.org.cn/index.aspx>).

Abbreviations

ACEI, angiotensin-converting enzyme inhibitor; ACM, all-cause mortality; ACS, acute coronary syndrome; ARB, angiotensin II receptor blocker; BUN, blood urea nitrogen; CAD, coronary artery disease; CCB, calcium channel blocker; CM, cardiac mortality; Cr, creatinine; CVD, cardiovascular disease; DBP, diastolic blood pressure; DM, diabetes mellitus; FBG, fasting blood glucose; GHR, fasting blood glucose to high-density lipoprotein cholesterol ratio; HDL-C, high-density lipoprotein cholesterol; HR, hazard ratio; LDL-C, low-density lipoprotein cholesterol; MACCE, main/major adverse cardiovascular and cerebrovascular event; MACE, major adverse cardiovascular event; MetS, metabolic syndrome; MI, myocardial infarction; PCI, percutaneous coronary intervention; ROC, receiver operating characteristic curve; SBP, systolic blood pressure; TC, total cholesterol; TG, triglyceride; UA, uric acid; WBC, white blood count.

References

- 1 Cai, G., Shi, G., Xue, S. and Lu, W. (2017) The atherogenic index of plasma is a strong and independent predictor for coronary artery disease in the Chinese Han population. *Medicine (Baltimore)* **96**, e8058, <https://doi.org/10.1097/MD.0000000000008058>
- 2 Sherling, D.H., Perumareddi, P. and Hennekens, C.H. (2017) Metabolic syndrome. *J. Cardiovasc. Pharmacol. Ther.* **22**, 365–367, <https://doi.org/10.1177/1074248416686187>

- 3 Muhlestein, J.B., Anderson, J.L., Horne, B.D., Lavasani, F., Allen Maycock, C.A., Bair, T.L. et al. (2003) Effect of fasting glucose levels on mortality rate in patients with and without diabetes mellitus and coronary artery disease undergoing percutaneous coronary intervention. *Am. Heart J.* **146**, 351–358, [https://doi.org/10.1016/S0002-8703\(03\)00235-7](https://doi.org/10.1016/S0002-8703(03)00235-7)
- 4 Stein, R., Ferrari, F. and Scolaria, F. (2019) Genetics, dyslipidemia, and cardiovascular disease: new insights. *Curr. Cardiol. Rep.* **21**, 68, <https://doi.org/10.1007/s11886-019-1161-5>
- 5 Silbernagel, G., Schöttker, B., Appelbaum, S., Scharnagl, H., Kleber, M.E., Grammer, T.B. et al. (2013) High-density lipoprotein cholesterol, coronary artery disease, and cardiovascular mortality. *Eur. Heart J.* **34**, 3563–3571, <https://doi.org/10.1093/eurheartj/ehs343>
- 6 Stamler, J., Vaccaro, O., Neaton, J.D. and Wentworth, D. (1993) Diabetes, other risk factors, and 12-yr cardiovascular mortality for men screened in the Multiple Risk Factor Intervention Trial. *Diabetes Care* **16**, 434–444, <https://doi.org/10.2337/diacare.16.2.434>
- 7 Aronow, W.S., Fleg, J.L., Pepine, C.J., Artinian, N.T., Bakris, G., Brown, A.S. et al. (2011) ACCF/AHA 2011 expert consensus document on hypertension in the elderly: a report of the American College of Cardiology Foundation Task Force on Clinical Expert Consensus Documents developed in collaboration with the American Academy of Neurology, American Geriatrics Society, American Society for Preventive Cardiology, American Society of Hypertension, American Society of Nephrology, Association of Black Cardiologists, and European Society of Hypertension. *J. Am. Soc. Hypertens.* **5**, 259–352
- 8 Olafsdottir, E., Andersson, D.K., Dedorsson, I. and Stefánsson, E. (2014) The prevalence of retinopathy in subjects with and without type 2 diabetes mellitus. *Acta Ophthalmol.* **92**, 133–137, 2014, <https://doi.org/10.1111/aos.12095>
- 9 Hicks, K.A., Mahaffey, K.W., Mehran, R., Nissen, S.E., Wiviott, S.D., Dunn, B. et al. (2018) 2017 cardiovascular and stroke endpoint definitions for clinical trials. *J. Am. Coll. Cardiol.* **71**, 1021–1034, <https://doi.org/10.1016/j.jacc.2017.12.048>
- 10 Valgimigli, M., Campo, G., Monti, M., Vranckx, P., Percoco, G., Tumscitz, C. et al. (2012) Short- versus long-term duration of dual-antiplatelet therapy after coronary stenting: a randomized multicenter trial. *Circulation* **125**, 2015–2026, <https://doi.org/10.1161/CIRCULATIONAHA.111.071589>
- 11 Inouye, M., Abraham, G., Nelson, C.P., Wood, A.M., Sweeting, M.J., Dudbridge, F. et al. (2018) Genomic risk prediction of coronary artery disease in 480,000 adults: implications for primary prevention. *J. Am. Coll. Cardiol.* **72**, 1883–1893, <https://doi.org/10.1016/j.jacc.2018.07.079>
- 12 Li, Z., Wu, J., Wei, W., Cai, X., Yan, J. and Song, J. (2019) Association of serum miR-186-5p with the prognosis of acute coronary syndrome patients after percutaneous coronary intervention. *Front. Physiol.* **10**, 686, <https://doi.org/10.3389/fphys.2019.00686>
- 13 Melo, Z., Ishida, C., Goldaraz, M.P., Rojo, R. and Echavarría, R. (2018) Novel roles of non-coding RNAs in opioid signaling and cardioprotection. *Noncoding RNA* **4**, 22, <https://doi.org/10.3390/ncrna4030022>
- 14 Wu, T.T., Zheng, Y.Y., Hou, X.G., Yang, Y., Ma, X., Ma, Y.T. et al. (2019) Red blood cell distribution width as long-term prognostic markers in patients with coronary artery disease undergoing percutaneous coronary intervention. *Lipids Health Dis.* **18**, 140, <https://doi.org/10.1186/s12944-019-1082-8>
- 15 Zheng, Y.Y., Wu, T.T., Chen, Y., Hou, X.G., Yang, Y. and Ma, X. (2019) Gamma-glutamyl transferase-to-platelet ratio as a novel predictor of long-term adverse outcomes in patients after undergoing percutaneous coronary intervention: a retrospective cohort study. *Thromb. Haemost.* **119**, 1021–1030
- 16 Sultani, R., Tong, D.C., Peverelle, M., Lee, Y.S., Baradi, A. and Wilson, A.M. (2020) Elevated triglycerides to high-density lipoprotein cholesterol (TG/HDL-C) ratio predicts long-term mortality in high-risk patients. *Heart Lung Circ.* **29**, 414–421, <https://doi.org/10.1016/j.hlc.2019.03.019>
- 17 Younis, A., Goldkorn, R., Goldenberg, I., Geva, D., Tzur, B., Mazu, A. et al. (2017) Impaired fasting glucose is the major determinant of the 20-year mortality risk associated with metabolic syndrome in nondiabetic patients with stable coronary artery disease. *J. Am. Heart Assoc.* **6**, e006609, <https://doi.org/10.1161/JAHA.117.006609>
- 18 Mao, Q., Zhou, D., Li, Y., Wang, Y., Xu, S.C. and Zhao, X.H. (2019) The triglyceride-glucose index predicts coronary artery disease severity and cardiovascular outcomes in patients with non-ST-segment elevation acute coronary syndrome. *Dis. Markers* **2019**, 6891537, <https://doi.org/10.1155/2019/6891537>
- 19 Wada, H., Dohi, T., Miyauchi, K., Shitara, J., Endo, H., Doi, S. et al. (2018) Mean platelet volume and long-term cardiovascular outcomes in patients with stable coronary artery disease. *Atherosclerosis* **277**, 108–112, <https://doi.org/10.1016/j.atherosclerosis.2018.08.048>
- 20 Rader, D.J. and Hovingh, G.K. (2014) HDL and cardiovascular disease. *Lancet* **384**, 618–625, [https://doi.org/10.1016/S0140-6736\(14\)61217-4](https://doi.org/10.1016/S0140-6736(14)61217-4)
- 21 Farhangkhorae, H., Khan, Z.A., Barbin, Y. and Chakrabarti, S. (2005) Glucose-induced up-regulation of CD36 mediates oxidative stress and microvascular endothelial cell dysfunction. *Diabetologia* **48**, 1401–1410, <https://doi.org/10.1007/s00125-005-1801-8>
- 22 Zhou, S.X., Huo, D.M., He, X.Y., Yu, P., Xiao, Y.H., Ou, C.L. et al. (2018) High glucose/lysophosphatidylcholine levels stimulate extracellular matrix deposition in diabetic nephropathy via platelet-activating factor receptor. *Mol. Med. Rep.* **17**, 2366–2372
- 23 Tenenbaum, A., Klempfner, R. and Fisman, E.Z. (2014) Hypertriglyceridemia: a too long unfairly neglected major cardiovascular risk factor. *Cardiovasc. Diabetol.* **13**, 159, <https://doi.org/10.1186/s12933-014-0159-y>
- 24 Kopin, L. and Lowenstein, C. (2017) Dyslipidemia. *Ann. Intern. Med.* **167**, ITC81–ITC96, <https://doi.org/10.7326/AITC201712050>
- 25 Kuvin, J.T., Rämét, M.E., Patel, A.R., Pandian, N.G., Mendelsohn, M.E. and Karas, R.H. (2002) A novel mechanism for the beneficial vascular effects of high-density lipoprotein cholesterol: enhanced vasorelaxation and increased endothelial nitric oxide synthase expression. *Am. Heart J.* **144**, 165–172, <https://doi.org/10.1067/mhj.2002.123145>
- 26 Gadi, R., Amanullah, A. and Figueredo, V.M. (2013) HDL-C: does it matter? An update on novel HDL-directed pharmacotherapeutic strategies. *Int. J. Cardiol.* **167**, 646–655, <https://doi.org/10.1016/j.ijcard.2012.05.052>
- 27 Yancey, P.G., Bortnick, A.E., Kellner-Weibel, G., de la Llera-Moya, M., Phillips, M.C. and Rothblat, G.H. (2003) Importance of different pathways of cellular cholesterol efflux. *Arteriosclerosis Thrombosis Vasc. Biol.* **23**, 712–719, <https://doi.org/10.1161/01.ATV.0000057572.97137.DD>
- 28 Tinsley, L.J., Kupelian, V., D'Eon, S.A., Pober, D., Sun, J.K., King, G.L. et al. (2017) Association of glycemic control with reduced risk for large-vessel disease after more than 50 years of type 1 diabetes. *J. Clin. Endocrinol. Metab.* **102**, 3704–3711, <https://doi.org/10.1210/jc.2017-00589>
- 29 Paneni, F. and Luscher, T.F. (2017) Cardiovascular protection in the treatment of type 2 diabetes: a review of clinical trial results across drug classes. *Am. J. Cardiol.* **120**, S17–S27, <https://doi.org/10.1016/j.amjcard.2017.05.015>
- 30 Ford, E.S. (1999) Body mass index, diabetes, and C-reactive protein among U.S. adults. *Diabetes Care* **22**, 1971, <https://doi.org/10.2337/diacare.22.12.1971>

- 31 Elhadd, T.A., Jennings, P.E. and Belch, J.J. (1997) Oxidative stress and diabetic complications in young IDDM patients. *Diabetes Care* **20**, 1338, <https://doi.org/10.2337/diacare.20.8.1338a>
- 32 Lyons, T.J. and Jenkins, A.J. (1997) Lipoprotein glycation and its metabolic consequences. *Curr. Opin. Lipidol.* **8**, 174–180, <https://doi.org/10.1097/00041433-199706000-00008>
- 33 Brownlee, M. (1991) Glycation and diabetic complications. *J. Pak. Med. Assoc.* **41**, 171–174