

POSTER PRESENTATION

Open Access

Visual and quantitative perfusion analysis in left main stem disease: a CE-MARC substudy

John P Greenwood¹, Ananth Kidambi^{1*}, Neil Maredia¹, Kevin Mohee¹, Steven Sourbron², Manish Motwani¹, Akhlaque Uddin¹, David P Ripley¹, Bernhard A Herzog¹, Arshad Zaman^{1,2}, Catherine J Dickinson³, Julia Brown⁴, Jane Nixon⁴, Colin Everett⁴, Sven Plein¹

From 16th Annual SCMR Scientific Sessions
San Francisco, CA, USA. 31 January - 3 February 2013

Background

Left main stem (LMS) disease occurs in approximately 5% of patients with stable angina. It confers adverse prognosis, with potential for prognostic gain with revascularization. Single-photon emission computed tomography (SPECT) and CMR fail to detect ischemia in 41% and 18% of patients with significant LMS stenosis respectively [1], likely in part because of balanced reduction in coronary perfusion. It is not known whether quantitative assessment of myocardial blood flow (MBF) can improve diagnostic rates. The CE-MARC study prospectively enrolled 752 patients with suspected coronary artery disease, scheduled to undergo CMR, SPECT and X-ray coronary angiography [2]. We assessed the diagnostic performance of visual and quantitative perfusion CMR in CE-MARC patients with LMS disease.

Methods

All patients from the CE-MARC population with LMS disease $\geq 50\%$, or LMS equivalent disease (proximal LAD and proximal LCx $\geq 70\%$) on quantitative angiography were studied. A control group (matched for age and gender, excluding LMS or 3-vessel disease) was randomly selected from the CE-MARC population. Visual SPECT and CMR analyses were from the original, blinded read of CE-MARC. Only perfusion components of the CE-MARC CMR and SPECT protocols were analyzed. MBF was calculated offline (PMI v0.4) using the Fermi model from CMR stress perfusion images, with arterial input defined in LV blood pool, and LAD and LCx segments in the mid-LV short axis myocardial slice as tissue response.

Results

47 patients were included in the analysis (22 LMS, 1 LMS equivalent, 24 controls); 1 LMS patient did not have CMR. Visual detection rates for ischemia in LMS disease were non-significantly higher for CMR than SPECT (83% vs. 61%, $p=0.19$). On quantitative CMR perfusion analysis, stress MBF was significantly lower in LMS patients than controls (2.67 ± 0.94 ml/g/min vs. 3.97 ± 1.25 ml/g/min, $p < 0.01$). ROC AUC for MBF was 0.81. An MBF cut-off of 3.78 ml/g/min was derived by Youden's Index (to objectively find optimal sensitivity and specificity). This cut-off point had sensitivity 0.96, specificity 0.67 and accuracy 0.81 for LMS disease over controls. Using this cut-off, stress MBF had higher sensitivity in LMS disease than visual SPECT analysis (96% vs. 61%, $p=0.01$, Figure 1), but was not significantly superior to visual CMR analysis ($p=0.35$).

Conclusions

Quantitative CMR identifies LMS disease with higher sensitivity than visual SPECT analysis. Quantitative CMR analysis of MBF compared to visual CMR analysis did increase diagnostic sensitivity numerically; however this did not reach statistical significance in this small population from CE-MARC.

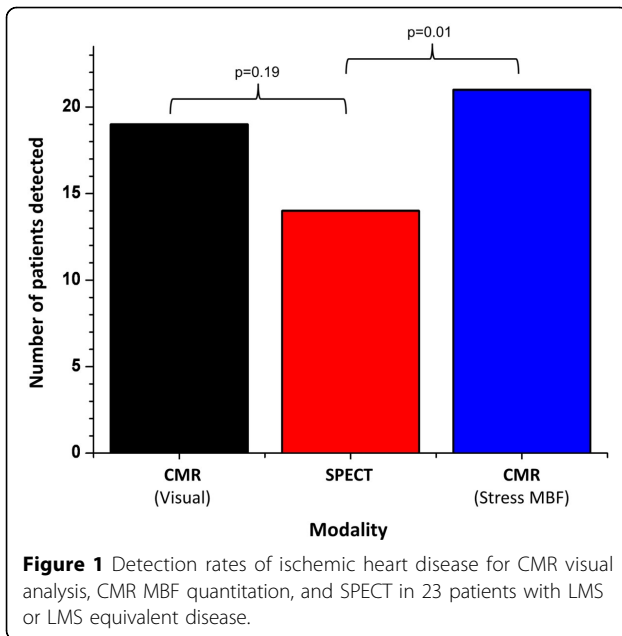
Funding

CE-MARC was funded by the British Heart Foundation (BHF). JPG and SP receive an educational research grant from Philips Healthcare. SP is funded by a BHF fellowship (FS/1062/28409).

Author details

¹Department of Cardiology, Multidisciplinary Cardiovascular Research Centre & Leeds Institute of Genetics, Health and Therapeutics, Leeds, UK

¹Department of Cardiology, Multidisciplinary Cardiovascular Research Centre & Leeds Institute of Genetics, Health and Therapeutics, Leeds, UK
Full list of author information is available at the end of the article



of Medical Physics, University of Leeds, Leeds, UK. ³Department of Nuclear Cardiology, Leeds Teaching Hospitals NHS Trust, Leeds, UK. ⁴Clinical Trials Research Unit, University of Leeds, Leeds, UK.

Published: 30 January 2013

References

1. Greenwood JP, *et al.* *JCMR* 2012, **14**:O93.
2. Greenwood JP, *et al.* **CE-MARC: a prospective trial.** *Lancet* 2012, **379**:453-460.

doi:10.1186/1532-429X-15-S1-P195

Cite this article as: Greenwood *et al.*: Visual and quantitative perfusion analysis in left main stem disease: a CE-MARC substudy. *Journal of Cardiovascular Magnetic Resonance* 2013 **15**(Suppl 1):P195.

Submit your next manuscript to BioMed Central and take full advantage of:

- Convenient online submission
- Thorough peer review
- No space constraints or color figure charges
- Immediate publication on acceptance
- Inclusion in PubMed, CAS, Scopus and Google Scholar
- Research which is freely available for redistribution

Submit your manuscript at
www.biomedcentral.com/submit

 **BioMed Central**