



# HHS Public Access

Author manuscript

Nat Commun. Author manuscript; available in PMC 2015 December 02.

Published in final edited form as:

Nat Commun. ; 6: 7216. doi:10.1038/ncomms8216.

## The CREB/CRTC2 Pathway Modulates Autoimmune Disease by Promoting Th17 Differentiation

Jeniffer B. Hernandez<sup>1</sup>, Christina Chang<sup>2</sup>, Mathias LeBlanc<sup>1</sup>, David Grimm<sup>1</sup>, John Le Lay<sup>3</sup>, Klaus H. Kaestner<sup>3</sup>, Ye Zheng<sup>2</sup>, and Marc Montminy<sup>1,\*</sup>

<sup>1</sup>Peptide Biology Laboratories, Salk Institute, 10010 North Torrey Pines Road, La Jolla, CA 92037, USA

<sup>2</sup>Nomis Foundation for Immunobiology and Microbial Pathogenesis Laboratories, Salk Institute, 10010 North Torrey Pines Road, La Jolla, CA 92037, USA

<sup>3</sup>Department of Genetics, Institute for Diabetes, Obesity and Metabolism, University of Pennsylvania School of Medicine, 3400 Civic Center Blvd, Philadelphia, PA 19104-5156

### Abstract

Following their activation in response to inflammatory signals, innate immune cells secrete T cell polarizing cytokines that promote the differentiation of naïve CD4 T cells into T helper (Th) cell subsets. Amongst these, Th17 cells play a prominent role in the development of a number of autoimmune diseases. Although regarded primarily as an immunosuppressant signal, cAMP has been found to mediate pro-inflammatory effects of macrophage-derived prostaglandin E<sub>2</sub> (PGE<sub>2</sub>) on Th17 cells. Here we show that PGE<sub>2</sub> enhances Th17 cell differentiation via the activation of the CREB co-activator CRTC2. Following its dephosphorylation, CRTC2 stimulates the expression of the cytokines IL-17A and IL-17F by binding to CREB over both promoters. CRTC2 mutant mice have decreased Th17 cell numbers, and they are protected from experimental autoimmune encephalitis, a model for multiple sclerosis. Our results suggest that small molecule inhibitors of CRTC2 may provide therapeutic benefit to individuals with autoimmune disease.

### INTRODUCTION

Th17 cells promote clearance of pathogens such as *Mycobacterium tuberculosis* and *Candida albicans*<sup>1</sup>; they are also implicated in autoimmune diseases such as multiple sclerosis, rheumatoid arthritis, inflammatory bowel disease, and asthma. Following their activation, innate immune cells secrete cytokines such as TGF- $\beta$  and IL-6, which promote the differentiation of naïve CD4 T cells into Th17 cells<sup>2-4</sup>. In turn, Th17 cells secrete factors

Users may view, print, copy, and download text and data-mine the content in such documents, for the purposes of academic research, subject always to the full Conditions of use:[http://www.nature.com/authors/editorial\\_policies/license.html#terms](http://www.nature.com/authors/editorial_policies/license.html#terms)

\*Correspondence: montminy@salk.edu.

#### Author Contributions

J.B.H. and M.R.M designed the research and analyzed the data; J.B.H., C.C. and D.G. conducted the experiments; Y.Z. provided suggestions for experiments and feedback on the manuscript; M.L. took images, analyzed and scored the H&E and luxol fast blue spinal cord sections; J.L. and K.K. generated the CRTC2 loxp mice and J.B.H. and M.R.M. wrote the manuscript.

**Competing Financial Interests:** The authors declare no competing financial interests.

such as IL-17A and IL-17F to recruit neutrophils and macrophages for pathogen clearance<sup>5</sup>. Both IL-17A and IL-17F appear critical for Th17 function, as mice deficient in these two cytokines are resistant to a mouse model of multiple sclerosis called experimental autoimmune encephalomyelitis (EAE)<sup>6, 7</sup>.

The paracrine hormone prostaglandin E2 (PGE<sub>2</sub>) exerts both immunosuppressive and pro-inflammatory effects on immune cells. PGE<sub>2</sub> suppresses the function of macrophages, neutrophils, Th1 cells, and natural killers, for example; yet it promotes Th2, regulatory T cell, and Th17 cell responses<sup>8</sup>. PGE<sub>2</sub> has been found to function through Gs-coupled EP2 and EP4 receptors, which upregulate IL-17A and IL-17F expression<sup>9</sup>. Although PGE<sub>2</sub> concentrations are elevated in cerebrospinal fluid from multiple sclerosis patients, the role of this paracrine hormone in this setting is unknown<sup>10</sup>. Animal studies on EAE support a dual role for PGE<sub>2</sub> in promoting the generation of Th17 cells during immunization and in modulating entry of Th17 cells into the CNS<sup>11</sup>.

cAMP is thought to function primarily as an immunosuppressant signal; it inhibits nearly every pathway downstream of the T cell receptor (TCR) to suppress T cell activation, proliferation, and cytokine production<sup>12</sup>. Despite these effects, T cells deficient in cAMP signaling due to targeted disruption of the G<sub>αs</sub> unit of the heterotrimeric G protein, show a block in Th17 cell differentiation and inflammatory responsiveness<sup>13</sup>.

In line with these pro-inflammatory effects, the cAMP responsive factor CREB has been found to enhance the activation, proliferation and survival of T cells<sup>14</sup>. Mice deficient in CREB1 and the CREB family member, ATF-1, have reduced thymic cellularity and delayed recovery following sublethal irradiation<sup>15</sup>. Moreover, mice expressing a dominant negative CREB polypeptide exhibit defects in proliferation, IL-2 production, and impaired T cell function<sup>16, 17</sup>.

In addition to promoting CREB phosphorylation, cAMP also stimulates cellular gene expression via the PKA-dependent dephosphorylation of the CRTC family of CREB co-activators. Sequestered in the cytoplasm under basal conditions, CRTCs translocate to the nucleus following their dephosphorylation, where they bind to CREB on relevant promoters<sup>18</sup>. Of the three family members, CRTC2 is abundantly expressed in the liver, spleen, and lymph nodes (<http://biogps.gnf.org/>). While the CREB-CRTC2 pathway has been shown to function importantly in glucose metabolism and B cell differentiation, its role in T cell development and function has not been fully characterized<sup>19, 20</sup>. Here we use mice with a knockout of the CRTC2 gene to evaluate its effects on T cell differentiation. Our results highlight an unexpected role for the CREB pathway in adaptive immunity.

## RESULTS

### Th17 Differentiation is Defective in CRTC2 Mutant Mice

We evaluated thymic phenotypes of CRTC2 mutant (*Crtc2*<sup>-/-</sup>) mice compared to control littermates. The relative proportions of CD4 or CD8 single positive, double positive, and double negative thymocytes were similar between *Crtc2*<sup>-/-</sup> and control littermates

(Supplementary Fig. 1a). Splenic CD4 and CD8 T cell numbers were also comparable (Supplementary Fig. 1b).

Although naïve CD4 T cells from both groups differentiated comparably into Th1, Th2, and Treg cells in vitro (Fig. 1a, 1b), the differentiation of *Crtc2*<sup>-/-</sup> cells into Th17 cells was significantly impaired (Fig. 1b); IL-17A (*il17a*), and IL17F (*il17f*) cytokine expression was also reduced in CRTC2-mutants relative to control (Fig. 1c). Consistent with these changes, mRNA amounts for *il17a* and *il17f* were also down-regulated in *Crtc2*<sup>-/-</sup> CD4 T cells (Fig. 1d). *Crtc2*<sup>-/-</sup> Th17 cells also had lower mRNA amounts for NR4A2, a well-established CREB/CRTC2 target that has been shown to regulate Th17 differentiation and autoimmune disease (Fig. 1d)<sup>18, 21</sup>.

Despite these effects, mRNA amounts for other Th17 genes, including the retinoic acid receptor-related orphan receptor (ROR)- $\gamma$ t (*rorc*), ROR- $\alpha$  (*rora*), and signal transducer and activator of transcription 3 (*stat3*), were relatively unaffected by deletion of the *Crtc2* gene (Supplementary Fig. 2).

We reasoned that loss of *Crtc2* could interfere with either the proliferation or survival of Th17 cells. Supporting this notion, disruption of CREB activity has been shown to stimulate apoptosis and to reduce proliferation<sup>16, 17</sup>. When placed under Th17 differentiation conditions, however, *Crtc2*<sup>-/-</sup> CD4 T cells showed comparable Annexin-V staining relative to wild type cells (Supplementary Fig. 3). Moreover, mRNA amounts for the anti-apoptotic factors Bcl2 and Bcl-xL appeared comparable between wild type and *Crtc2*<sup>-/-</sup> cells. Arguing as well against an effect on proliferation, CRTC2-mutant CD4 T cells actually showed a slight increase in mitotic index compared to wild type (Supplementary Fig. 3b).

The prostaglandin PGE<sub>2</sub>, a product of activated innate immune cells, has been found to promote the differentiation of human and murine Th17 cells<sup>9</sup>. Consistent with these findings, exposure to PGE<sub>2</sub> stimulated CRTC2 dephosphorylation (Fig. 1e), and it increased *il17a* and *il17f* mRNA amounts in wild type but not CRTC2-mutant Th17 differentiated cells (Fig. 1d). Exposure to PGE<sub>2</sub> also increased mRNA amounts for *rorc*, *rora* and *stat3*, although loss of CRTC2 did not interfere with the induction of these genes (Supplementary Fig. 4a). Arguing against an effect on PGE<sub>2</sub> signaling per se, mRNA amounts for the PGE<sub>2</sub> receptors EP2 and EP4 were comparable between wild type and CRTC2-mutant Th17 differentiated cells (Supplementary Fig. 4b).

Having seen that targeted disruption of the *Crtc2* gene blocks Th17 cell differentiation even in the absence of exogenous PGE<sub>2</sub>, we considered that T cells may themselves produce PGE<sub>2</sub> endogenously. Supporting this notion, T cells have been shown to express prostaglandin synthase 2 (Ptgs2)<sup>22</sup>. mRNA amounts for Ptgs2 were upregulated in CD4 T cells under Th17 differentiation conditions compared to undifferentiated CD4 T cells (Th0) (Supplementary Fig. 4c). Correspondingly, immunoreactive PGE<sub>2</sub> amounts were also increased in the medium from CD4 T cells exposed to Th17 differentiation cocktail (Supplementary Fig. 4d).

We exposed naïve CD4 T cells to individual components of the Th17 differentiation cocktail (Supplementary Fig. 4e). In line with its ability to stimulate *Ptgs2* expression, T cell activation by  $\alpha$ CD3/CD28 alone was sufficient to trigger CRTC2 dephosphorylation. Although Th17 cytokines had no effect individually, exposure to a cocktail of these further enhanced effects of  $\alpha$ CD3/CD28 on CRTC2 dephosphorylation. Together, these results indicate that endogenous PGE<sub>2</sub> promotes T cell differentiation in part through the activation of CRTC2.

### The CREB/CRTC2 Pathway Regulates IL-17 Expression

CREB stimulates cellular gene expression by binding to palindromic (TGACGTCA) or to half site (TGACG/CGTCA) cAMP Responsive Elements (CREs) often positioned within 1 kilobase of the transcriptional start site (TSS). The IL-17A gene contains two half site CREs at -144 and -54, while the IL-17F gene has half sites at -149 and at -85 relative to the TSS (Fig. 2a). To evaluate the potential role of CREB in mediating effects of CRTC2 on these genes, we expressed a dominant negative CREB polypeptide called A-CREB in wild type naïve CD4 T cells under Th17 differentiation conditions. Similar to the effects we observed with loss of CRTC2, A-CREB expression significantly decreased Th17 differentiation, although to a lesser extent than CRTC2 gene disruption (Fig. 2b, Supplementary Fig. 5). Consistent with their overlapping effects on CREB target genes, combined expression of A-CREB and knockout of the CRTC2 gene decreased Th17 cell differentiation more than either alone.

We evaluated effects of CRTC2 on IL-17A and IL-17F promoter activity. Over-expression of phosphorylation defective, constitutively active CRTC2 (CRTC2AA) enhanced both IL-17A and IL-17F reporters in transient transfection assays (Fig. 2c). Indeed, exposure to cAMP agonist forskolin further increased IL-17A and IL-17F promoter activity. In keeping with the role of CRTC2 as a CREB co-activator, co-expression of A-CREB blocked the stimulatory effects of CRTC2 in this setting (Fig. 2d).

We performed chromatin immunoprecipitation studies to determine whether IL-17A and IL-17F genes are direct targets for CRTC2. Supporting this idea, exposure to PGE<sub>2</sub> increased amounts of CRTC2 over CREB binding sites on both IL-17A and IL-17F promoters (Fig. 2e). Taken together, these results indicate that CRTC2 regulates IL-17A and IL-17F gene expression by binding to their promoters in response to PGE<sub>2</sub> stimulation.

### CRTC2 Mutant Mice are Refractory to EAE

Having seen that Th17 cell differentiation from naïve CD4 T cells is decreased in CRTC2-mutant mice, we evaluated whether these animals would be correspondingly resistant to EAE. Following administration of immunogen (MOG<sub>35-55</sub> peptide), wild type mice developed hind limb paralysis and limp tails characteristic of EAE but CRTC2-mutant mice did not (Fig. 3a). Consistent with these clinical scores, Th17 cell numbers in the central nervous system (CNS) were substantially lower in CRTC2-mutant mice compared to wild type littermates (Fig. 3b). Correspondingly, spinal cord sections from CRTC2 mutants had substantially lower numbers of infiltrating cells, which were otherwise associated with demyelination (Fig. 3c).

In principle, the decreased number of Th17 cells in the CNS of *Crtc2*<sup>-/-</sup> mice could reflect either a decrease in Th17 differentiation in peripheral tissues or reduced recruitment of Th17 cells into the CNS. Supporting the former, *Crtc2*<sup>-/-</sup> mice had fewer Th17 cells in draining lymph nodes following MOG<sub>35-55</sub> immunization than control littermates (Fig. 3d). By contrast, Th1 cell numbers were comparable between the two groups, indicating that CRTC2-mutant cells CD4 T cells are specifically defective in Th17 cell differentiation during the induction phase of EAE.

To evaluate Th17 cell recruitment to the CNS, we performed adoptive transfer experiments using MOG<sub>35-55</sub> primed Th17 cells from wild type or CRTC2- mutant mice (Supplementary Fig. 6a). Mice receiving *Crtc2*<sup>-/-</sup> Th17 cells remained refractory to EAE compared to recipient mice injected with wild type Th17 cells (Supplementary Fig. 6b). *Crtc2*<sup>-/-</sup> Th17 cell numbers in the CNS were also decreased relative to controls (Supplementary Fig. 6c). By contrast, numbers of *Crtc2*<sup>-/-</sup> Th1 cells in the CNS were actually upregulated compared to wild type. Taken together, this data supports the idea that differentiation and recruitment of Th17 cells to the CNS are both adversely affected in *Crtc2*<sup>-/-</sup> mice.

### Decreased Th17 differentiation and EAE in *Crtc2*<sup>CD4</sup> mice

To determine whether the effects of CRTC2 on EAE are cell autonomous, we used the Cre-loxP system to generate mice with a deletion of CRTC2 targeted to T cells. After crossing CRTC2 fl/fl and CD4-Cre mice, we obtained *Crtc2*<sup>CD4</sup> animals lacking *Crtc2* expression in Th17 cells by Western blot analysis (Fig. 4a). Similar to whole body knockouts, *Crtc2*<sup>CD4</sup> mice had normal proportions of CD4 and CD8 single positive, double positive, and double negative cells compared to *Crtc2* fl/fl controls (Supplementary Fig. 7a). No differences in the proportion of T cells in the spleens of *Crtc2*<sup>CD4</sup> mice were evident compared to *Crtc2* fl/fl mice (Supplementary Fig. 7b). Percentages of effector memory (CD44hiCD62Llo) and naïve (CD44loCD62Lhi) CD4+ and CD8+ T cells were also comparable between *Crtc2*<sup>CD4</sup> and *Crtc2* fl/fl mice (Supplementary Fig. 7c).

*Crtc2*<sup>CD4</sup> naïve CD4 T cells differentiated poorly into Th17 cells relative to control (Fig. 4b). Under Th17 differentiation conditions, mRNA amounts for *il17a* and *il17f* mRNA were also decreased in *Crtc2*<sup>CD4</sup> CD4 T cells (Fig. 4c). Exposure to PGE<sub>2</sub> increased *il17a* and *il17f* mRNA levels in *Crtc2* fl/fl but not *Crtc2*<sup>CD4</sup> CD4 T cells. These results demonstrate that PGE<sub>2</sub> enhances *il17a* and *il17f* gene expression through induction of the CREB/CRTC2 pathway in T cells.

In keeping with results from mice with a whole-body knockout of CRTC2, *Crtc2*<sup>CD4</sup> mice also had significantly reduced EAE; correspondingly, CNS-infiltrating Th17 cell numbers were reduced in *Crtc2*<sup>CD4</sup> mice compared to control littermates (Fig. 4d, e). These results indicate that the resistance to EAE in *Crtc2*<sup>-/-</sup> mice is intrinsic to the loss of *Crtc2* expression in CD4 T cells.

## DISCUSSION

Although cAMP has been thought to function as a potent negative regulator of T cells<sup>12</sup>, we found a positive role for the CREB pathway in stimulating Th17 cell differentiation; deletion

of CRTC2 selectively decreases IL-17A and IL-17F cytokine production and blocks the differentiation of naïve T cells into Th17 cells (Supplementary Fig. 8). In keeping with its effects on CREB and CRTC2, exposure to PGE<sub>2</sub> augmented the expression of both IL-17A and IL-17F genes in wild type Th17 cells, but not in CRTC2-mutant Th17 cells. This data suggests that PGE<sub>2</sub> signals through the CREB/CRTC2 pathway to upregulate IL-17A and IL-17F levels and enhance Th17 cell function. PGE<sub>2</sub> appears to be produced both exogenously- by macrophages- and endogenously by differentiating T cells to activate the CREB pathway during Th17 cell differentiation. Similar to a previous study, we found that the activation of naïve T cells appears sufficient to trigger PTGS2 expression<sup>22</sup>.

In keeping with the importance of Th17 cells for the development of autoimmune disease, CRTC2-mutant mice had significantly reduced EAE compared to wild type mice. The resistance to EAE in CRTC2-mutant mice appears cell-autonomous because mice with targeted deletion of CRTC2 in T cells are also EAE-resistant.

Although the CREB/CRTC2 pathway has been proposed to stimulate Th1 cell differentiation<sup>23</sup>, we were unable to detect any decrease in Th1 cell numbers or activity in the context of CRTC2 deficiency. In vivo studies also argue against a significant role for CRTC2 in Th1 cell differentiation, at least in the context of EAE.

In addition to its role in T cells, the CREB/CRTC2 pathway also promotes fasting glucose homeostasis by upregulating the gluconeogenic program in response to increases in circulating pancreatic glucagon<sup>18</sup>. CRTC2 activity is increased in insulin resistance, where it contributes to elevations in circulating glucose concentrations<sup>19</sup>. Notably, IL-17A and IL-17F expression appear to be upregulated by elevations in glucose<sup>24</sup>, suggesting that the CREB pathway may also contribute to the development of autoimmune diseases in insulin resistance. Further studies should provide insight into the mechanism by which extracellular glucose modulates the expression of these cytokines.

## Methods

### Mice

C57BL/6 (B6) and CD4-Cre transgenic mice were purchased from Jackson Laboratory. CRTC2 fl/fl mice were generated by inserting the 5' loxP site between exons 1 and 2 and placing the 3' loxP between exons 4 and 5<sup>25</sup>. To generate *Crtc2*-mutant T cells, floxed *Crtc2* mice were crossed to CD4-Cre mice. The CD4 T cells in the Cre<sup>+</sup> *Crtc2*<sup>CD4</sup> mice were determined to be *Crtc2*<sup>CD4</sup>. The wild type littermates (Cre-*Crtc2*fl/fl) were used as control (*Crtc2*fl/fl). All mice used were on a C57BL/6 background, between 6 and 12 weeks of age, and sex-matched for each experiment. Mice were housed in pathogen-free conditions. Animal studies were approved and supervised by the Institutional Animal Care and Use Committee (IACUC) at the Salk Institute.

### Reagents

Reagents were obtained as follows: PGE<sub>2</sub>, PMA, Ionomycin and forskolin were purchased from Sigma-Aldrich; recombinant cytokines (TGFβ, IL-6, IL-7 and IL-1β) from Peprotech; IL-23 from R&D systems; anti-CD3 (2C11), anti-CD28 (2C11), anti-IFN-γ (XMG1.2), anti-



IL-12, and anti-IL-4 (11B11) antibodies were purchased from BioXCell. All antibodies used for flow cytometry were obtained from ebioscience. Tubulin antibody was purchased from Millipore. For CREB, pCREB (pSer133), and CRTC2 detection, rabbit polyclonal antibodies were raised against their respective antigens. Retrovirus MSCV-ACREB was a gift from Paul K. Brindle (St. Jude's).

### CD4+ T cell isolation and differentiation in vitro

CD4 T cells were isolated by immunomagnetic selection (Dynabeads FlowComp Mouse CD4 Kit, Life Technologies) from a single-cell suspension of splenocytes. Naïve CD4 T cells (CD62L<sup>hi</sup>CD44<sup>lo</sup>CD25<sup>-</sup>) were isolated from CD4+ T cells by cell sorting on a FACSaria or InFlux flow cytometer (BD Biosciences). Cells were incubated with CLICKS medium (Irvine Scientific) supplemented with 2 mM l-glutamine, 100 U ml<sup>-1</sup> penicillin, 100 µg ml<sup>-1</sup> streptomycin, 50 µM β-mercaptoethanol, and 10% FCS. Culture plates (6-well) were coated with anti-hamster Ab (1:100, Vector labs). Where indicated naïve CD4 T cells were placed in supplemented CLICKS medium for 2 days after isolation to reduce background CREB phosphorylation. IL-7 was added to maintain survival of the T cells.

For all differentiation conditions, naïve CD4 T cells were cultured in medium with plate-bound anti-CD3 Ab (1 µg mL<sup>-1</sup>) and soluble anti-CD28 (0.5 µg mL<sup>-1</sup>). For Th17 differentiation, cells were treated with TGF-β (2 ng mL<sup>-1</sup>), IL-6 (20 ng mL<sup>-1</sup>), IL-1β (20 ng mL<sup>-1</sup>), and IL-23 (20 ng mL<sup>-1</sup>, R&D). For Th1 differentiation, cells were treated with IL-12 (20 ng mL<sup>-1</sup>), IL-2 (50 U mL<sup>-1</sup>) and anti-IL4 (20 µg mL<sup>-1</sup>). For Th2 differentiation, cells were treated with IL-4 (100 U mL<sup>-1</sup>), anti-IL-12 (10 µg mL<sup>-1</sup>), IL-2 (50 U mL<sup>-1</sup>) and anti-IFN-γ (10 µg mL<sup>-1</sup>). For iTreg generation, cells were treated with hTGF-β (5 ng mL<sup>-1</sup>), and IL-2 (50 U mL<sup>-1</sup>). For Th0, cells were treated with IL-2, in addition to the above αCD3/CD28 conditions. T cells were differentiated for 4 days, unless indicated, and then treated with PMA (50 ng mL<sup>-1</sup>), Ionomycin (500 ng mL<sup>-1</sup>) and Golgi-plug (1:1000) for 5 hours prior to intracellular staining. For intracellular staining, cells were fixed and permeabilized using ebioscience intracellular fixation and permeabilization kit prior to addition of labeled antibodies. All labeled antibodies were used at 1:300 dilutions. Cells were analyzed on a LSRII flow cytometer or FACSaria.

### Chromatin Immunoprecipitation

Chromatin immunoprecipitation with CRTC2 antisera was performed as described previously<sup>26</sup>. Following 4 days of Th17 differentiation, Th17 cells were expanded under Th17 conditions for an additional 2 days, and treated with PGE<sub>2</sub> (1 µM) 30 minutes prior to fixation. Cells were treated with PGE<sub>2</sub> at the end of Th17 differentiation to see if PGE<sub>2</sub> enhanced binding of CRTC2 to CREB on the IL-17A and IL-17F promoters. Briefly, Th17 cells were fixed in 1% formaldehyde for 10 minutes at room temperature and then glycine (125 mM) was added to stop the crosslinking reaction for 5 minutes at room temperature while cells were rocking. Cells were then resuspended in cell lysis buffer (25 mM HEPES pH 7.8, 1.5 mM MgCl<sub>2</sub>, 10 mM KCl, 0.3% NP-40, and 1 mM DTT) and incubated on ice for 10 minutes. Following 5 minute centrifugation at 5000 rpm, cells were resuspended 800 µL of nuclei lysis buffer (50 mM HEPES pH 7.9, 140 mM NaCl, 1 mM EDTA, 1% Triton X-100, 0.1% Na-Deoxycholate, and 0.2% SDS) and incubated on ice for 10 minutes.

Chromatin was sonicated 8 times for 15 seconds at level 8. Following centrifugation, supernatants were with protein A for 6 hours. Supernatants were divided equally among samples and 1% was saved for input control. 2 µg of each antibody was incubated with supernatants overnight. Protein A was then added to mix for 2 hours. Following centrifugation pellets were washed once with nucleic lysis buffer, once with nucleic lysis buffer containing 500 mM NaCl, twice with 20 mM Tris, pH 8.0, 1 mM EDTA, 250 mM LiCl, 0.5% NP-40, 0.5% Na-deoxycholate, and twice with TE. The antibody/protein/DNA complexes were eluted with 1% SDS, 1 mM EDTA, 10 mM Tris, pH 8.1. Samples were then incubated at 65°C overnight to reverse formaldehyde crosslinking. Next samples were incubated at 65°C with proteinase K for 2 hours. Glycogen was then added to the samples and DNA was extracted using phenol chloroform. Samples were resuspended in water and analyzed with quantitative real time PCR using primers listed in Table 1 (Supplementary Table S1).

### Real-Time Quantitative PCR

Total RNA from cells was extracted using Tripure and cDNA was generated using the Transcriptor First Strand cDNA Synthesis kit (Roche Applied Science). cDNA was quantified on a lightcycler 480 instrument (Roche Applied Science). Gene expression data were presented relative to the expression of housekeeping gene 18s.

### Reporter Assays

HEK293T cells were cultured in DMEM (corning cellgro) containing 10% fetal bovine serum (Gemini Bio Products), 100 µg mL<sup>-1</sup> penicillin-streptomycin and 1 mM sodium pyruvate (corning cellgro). Forskolin (10µM) was added as indicated. HEK293T cells were transfected with lipofectamine 2000 (Invitrogen). Luciferase activities were normalized to β-galactosidase activity. pGL4 mouse IL-17A 0.6 kb promoter plasmid was purchased from Addgene. For pGL3 mouse IL-17F promoter plasmid, 461 base pairs upstream of the mouse IL-17F start site was cloned into pGL3 using 5'-GCTCTCGAGGTGTTTAAAACCAAGTCT-3' and 5'-GCTAAGCTTTCTCCAATGGCTGCTTCT-3' primers. pCDNA mouse CRTC2 constitutively active (S171A, S275A) was previously described<sup>27</sup>.

### Western Blotting

Th17 cells were treated as indicated and then lysed in complete lysis buffer (150 mM NaCl, 50 mM sodium fluoride, 10 mM β-glycerophosphate, 20 mM HEPES (pH 7.4), 1% Triton X-100 with 1 mM sodium vanadate, 1 mM PMSF, 1 mg mL<sup>-1</sup> aprotinin, and 1 mg mL<sup>-1</sup> leupeptin) and lysates were resolved on a 7.5% SDS-PAGE gel. The proteins were transferred to a polyvinylidene difluoride membranes (Immobilon-P; Millipore), prewashed in TBST, then blocked in TBST supplemented with 5% milk and incubated with primary antibody. Following an overnight incubation with the primary Ab, the blot was washed three times in TBST, and incubated with peroxidase-labeled anti-rabbit secondary antibody for 1 hour incubation at room temperature. To visualize Western, the blot was washed three times in TBST, then incubated in ECL reagent (Amersham Biosciences) and exposed to x-ray film. Images have been cropped for presentation. Full size images are presented in Supplementary Fig. 9.



## Enzyme-Linked Immunosorbent Assays

PGE<sub>2</sub> was quantified from Th0 or Th17 cultured cell medium. Medium without cells was used as a control. After 4 days of treatment, cells were spun down and the supernatant was collected. PGE<sub>2</sub> was quantified using the PGE<sub>2</sub> parameter assay kit from R&D Systems.

## Retroviral Infection

MSCV-IRES-GFP and MSCV-ACREB-IRES-GFP were transfected into 293T cells along with Psi-Eco packaging vector and retroviral supernatants were collected as previously described<sup>28</sup>. Naïve CD4 T cells were differentiated into Th17 cells as stated above and infected on days 1 and 2. Fresh cytokines were added after each infection. On day 4, cells were then treated with PMA (50 ng mL<sup>-1</sup>), Ionomycin (500 ng mL<sup>-1</sup>) and Golgi-plug (1:1000) for 5 hours prior to intracellular staining. For intracellular staining, cells were fixed and permeabilized using ebioscience intracellular fixation and permeabilization kit prior to addition of labeled antibodies.

## Active EAE

On day 0 and 7 mice were immunized with 400 µg of MOG<sub>35-55</sub> peptide supplemented with complete Freund's adjuvant containing 4 mg mL<sup>-1</sup> desiccated tuberculosis. On day 0 and 2 mice were injected with 250 ng of pertussis toxin (List Biologicals). Mice were monitored daily for signs of clinical disease following EAE induction using the following scale: (0.5) altered gait and/or hunched appearance, [1] limp tail, [2] partial hind limb paralysis, [3] complete hind limb paralysis, [4] complete hind limb paralysis and partial fore limb paralysis, and [5] death.

## Passive EAE

On day 0, donor mice were immunized with 400 µg of MOG<sub>35-55</sub> supplemented with complete Freund's adjuvant containing 4 mg mL<sup>-1</sup> desiccated tuberculosis. On day 10, draining lymph nodes were harvested and cells were cultured at 5 million cells mL<sup>-1</sup> under Th17 differentiation conditions in addition to 20 µg mL<sup>-1</sup> of MOG<sub>35-55</sub> peptide. On day 14, cells were restimulated at 2 million cells mL<sup>-1</sup> using plate bound anti-CD3 and soluble anti-CD28 antibodies in the presence of 20 ng mL<sup>-1</sup> IL-18. On day 15, 4-5 million cells were injected intraperitoneally into sublethally irradiated mice. To compensate for the decrease in Th17 differentiation, recipients receiving CRTC2-mutant cells received 5 million cells instead of the 4 million cells that the wild type recipients received. Mice were monitored daily for signs of clinical disease following EAE induction using the same scale as in active EAE.

## Leukocyte isolation from the central nervous system

At the end of EAE mice were euthanized and brains and spinal cords were collected. Brains and spinal cords were pooled and treated with 2 mg mL<sup>-1</sup> of collagenase and 10 units of Dnase for 30 minutes at 37°C. Samples were then filtered through a 70 µm nylon mesh and leukocytes were isolated through a Percoll gradient. Leukocytes were then treated with PMA (50 ng mL<sup>-1</sup>), Ionomycin (500 ng mL<sup>-1</sup>) and Golgi-plug (1:1000) for 5 hours prior to intracellular staining. For intracellular staining, cells were fixed and permeabilized using

ebioscience intracellular fixation and permeabilization kit prior to addition of labeled antibodies.

### Evaluation of Spinal Cord Sections

Spinal cords were dissected at day 28 and stained with H&E or Luxol fast blue, and both cell infiltration and demyelination were scored. H&E slides were assessed for inflammation using the following scoring system: (0) = no evidence of inflammation; (1) rare, scattered small foci of cellular inflammation; (2) multiple, isolated foci of cellular infiltration; (3) multiple, confluent foci of inflammation; and (4) foci of necrosis and/or neutrophilic infiltration. Luxol fast blue slides were assessed for neuronal degeneration or axonal swelling using the following scoring system: (0) normal; (1) minimal or few, scattered degenerative neurons; (2) moderate, multifocal groups of degenerative neurons; (3) marked or large, multifocal degenerative neurons; and (4) severe or coalescing groups of degenerative neurons.

### Statistical analysis

All mice used in experiments were around 6-12 weeks old. Whenever possible, littermates of appropriate genotypes were used as age and sex-matched controls. The number of mice per experiment was limited by the availability of the required genotype and age. Criteria of exclusion were: 1) age 2) evident signs of disease. 3) spontaneous natural death during the experiment. Sample size (number of mice, spleens, and cells) is within the range of published unless indicated. Statistical analysis were performed with unpaired Student's t-test. Differences were considered statistically significant at  $P < 0.05$  (\*  $P < 0.05$ ; \*\*  $P < 0.01$  and \*\*\*  $P < 0.001$ ).

### Supplementary Material

Refer to Web version on PubMed Central for supplementary material.

### Acknowledgements

We thank the Salk flow cytometry core facility, specifically C.O'Connor and C.Fitzpatrick; P. Brindle for MSCV-ACREB-IRES-GFP; and the Salk peptide sequencing core, specifically J. Meisenhelder for generation of MOG<sub>35-55</sub> peptide. This work was supported by NIH grant DK R01-049777, the Clayton Foundation for Medical Research, the Kieckhefer Foundation, and the Leona M. and Harry B. Helmsley Charitable Trust. J.B.H was funded by the National Institute of Health T32 Salk cancer training grant.

### REFERENCES

1. Korn T, Bettelli E, Oukka M, Kuchroo VK. IL-17 and Th17 Cells. Annual review of immunology. 2009; 27:485–517.
2. Veldhoen M, Hocking RJ, Atkins CJ, Locksley RM, Stockinger B. TGFbeta in the context of an inflammatory cytokine milieu supports de novo differentiation of IL-17-producing T cells. Immunity. 2006; 24:179–189. [PubMed: 16473830]
3. Bettelli E, et al. Reciprocal developmental pathways for the generation of pathogenic effector TH17 and regulatory T cells. Nature. 2006; 441:235–238. [PubMed: 16648838]
4. Mangan PR, et al. Transforming growth factor-beta induces development of the T(H)17 lineage. Nature. 2006; 441:231–234. [PubMed: 16648837]

5. Kolls JK, Linden A. Interleukin-17 family members and inflammation. *Immunity*. 2004; 21:467–476. [PubMed: 15485625]
6. Yang XO, et al. Regulation of inflammatory responses by IL-17F. *The Journal of experimental medicine*. 2008; 205:1063–1075. [PubMed: 18411338]
7. Komiyama Y, et al. IL-17 plays an important role in the development of experimental autoimmune encephalomyelitis. *J Immunol*. 2006; 177:566–573. [PubMed: 16785554]
8. Kalinski P. Regulation of immune responses by prostaglandin E2. *J Immunol*. 2012; 188:21–28. [PubMed: 22187483]
9. Boniface K, et al. Prostaglandin E2 regulates Th17 cell differentiation and function through cyclic AMP and EP2/EP4 receptor signaling. *The Journal of experimental medicine*. 2009; 206:535–548. [PubMed: 19273625]
10. Bolton C, Turner AM, Turk JL. Prostaglandin levels in cerebrospinal fluid from multiple sclerosis patients in remission and relapse. *Journal of neuroimmunology*. 1984; 6:151–159. [PubMed: 6586729]
11. Esaki Y, et al. Dual roles of PGE2-EP4 signaling in mouse experimental autoimmune encephalomyelitis. *Proceedings of the National Academy of Sciences of the United States of America*. 2010; 107:12233–12238. [PubMed: 20566843]
12. Mosenden R, Tasken K. Cyclic AMP-mediated immune regulation—overview of mechanisms of action in T cells. *Cellular signalling*. 2011; 23:1009–1016. [PubMed: 21130867]
13. Li X, et al. Divergent requirement for Galphas and cAMP in the differentiation and inflammatory profile of distinct mouse Th subsets. *The Journal of clinical investigation*. 2012; 122:963–973. [PubMed: 22326954]
14. Wen AY, Sakamoto KM, Miller LS. The role of the transcription factor CREB in immune function. *J Immunol*. 2010; 185:6413–6419. [PubMed: 21084670]
15. Baumann S, et al. CREB function is required for normal thymic cellularity and post-irradiation recovery. *European journal of immunology*. 2004; 34:1961–1971. [PubMed: 15214044]
16. Barton K, et al. Defective thymocyte proliferation and IL-2 production in transgenic mice expressing a dominant-negative form of CREB. *Nature*. 1996; 379:81–85. [PubMed: 8538746]
17. Zhang F, Rincon M, Flavell RA, Aune TM. Defective Th function induced by a dominant-negative cAMP response element binding protein mutation is reversed by Bcl-2. *J Immunol*. 2000; 165:1762–1770. [PubMed: 10925253]
18. Altarejos JY, Montminy M. CREB and the CRTC co-activators: sensors for hormonal and metabolic signals. *Nat Rev Mol Cell Biol*. 2011; 12:141–151. [PubMed: 21346730]
19. Wang Y, et al. Targeted disruption of the CREB coactivator *Crtc2* increases insulin sensitivity. *Proceedings of the National Academy of Sciences of the United States of America*. 2010; 107:3087–3092. [PubMed: 20133702]
20. Sherman MH, et al. AID-induced genotoxic stress promotes B cell differentiation in the germinal center via ATM and LKB1 signaling. *Molecular cell*. 2010; 39:873–885. [PubMed: 20864035]
21. Raveney BJ, Oki S, Yamamura T. Nuclear receptor NR4A2 orchestrates Th17 cell-mediated autoimmune inflammation via IL-21 signalling. *PloS one*. 2013; 8:e56595. [PubMed: 23437182]
22. Iniguez MA, Punzon C, Fresno M. Induction of cyclooxygenase-2 on activated T lymphocytes: regulation of T cell activation by cyclooxygenase-2 inhibitors. *J Immunol*. 1999; 163:111–119. [PubMed: 10384106]
23. Yao C, et al. Prostaglandin E(2) promotes Th1 differentiation via synergistic amplification of IL-12 signalling by cAMP and PI3-kinase. *Nature communications*. 2013; 4:1685.
24. Kumar P, Natarajan K, Shanmugam N. High glucose driven expression of pro-inflammatory cytokine and chemokine genes in lymphocytes: molecular mechanisms of IL-17 family gene expression. *Cellular signalling*. 2014; 26:528–539. [PubMed: 24308966]
25. Le Lay J, et al. CRTC2 (TORC2) contributes to the transcriptional response to fasting in the liver but is not required for the maintenance of glucose homeostasis. *Cell Metab*. 2009; 10:55–62. [PubMed: 19583954]
26. Ravnskjaer K, et al. Cooperative interactions between CBP and TORC2 confer selectivity to CREB target gene expression. *Embo J*. 2007; 26:2880–2889. [PubMed: 17476304]

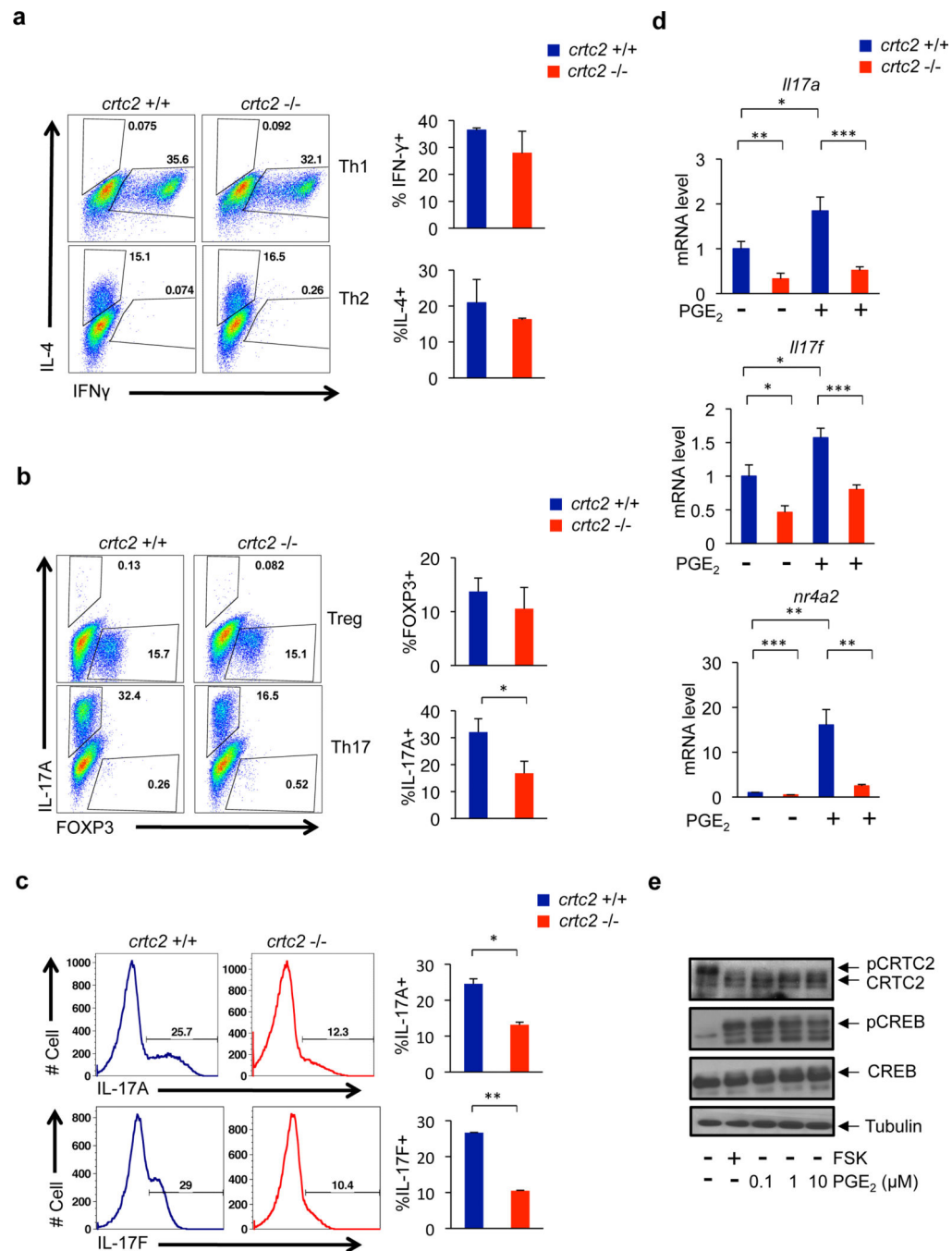
27. Wang Y, et al. Inositol-1,4,5-trisphosphate receptor regulates hepatic gluconeogenesis in fasting and diabetes. *Nature*. 2012; 485:128–132. [PubMed: 22495310]
28. Friedrich ML, et al. DRAK2, a lymphoid-enriched DAP kinase, regulates the TCR activation threshold during thymocyte selection. *International immunology*. 2005; 17:1379–1390. [PubMed: 16172133]

Author Manuscript

Author Manuscript

Author Manuscript

Author Manuscript

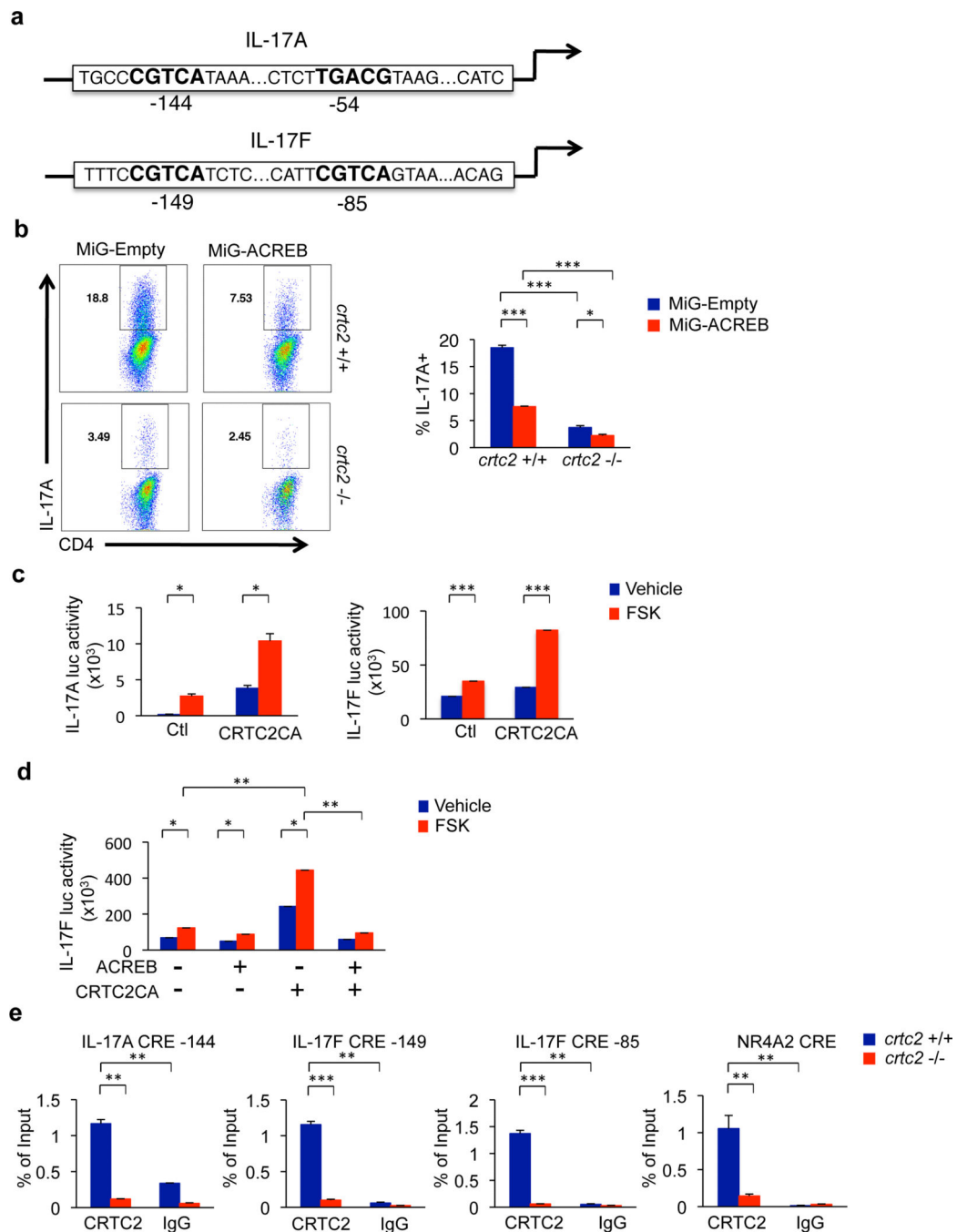


**Figure 1. Decreased Th17 differentiation in CRTC2-mutant mice**

(a and b) Wild type and CRTC2 mutant naïve CD4 T cells skewed towards Th1, Th2, Treg, and Th17 cells. Cytokine levels determined by flow cytometry. Plots are gated on live CD4 T cells. Number in each quadrant indicates cell frequency. Data are representative of 3 experiments. Bar graphs represent the mean of percentage (right)  $\pm$  SEM,  $n = 3$ , from 3 independent experiments with similar results. (c) Decrease in IL-17A and IL-17F secreting Th17 cells from CRTC2-mutant or wild type littermates under Th17 differentiation conditions. IL-17A and IL-17F levels determined by flow cytometry. The electronic gate

indicates the frequency of IL-17A (top) or IL-17F (bottom) CD4 T cells. Data are representative of 3 experiments. Bar graphs represent the mean percentage (right)  $\pm$  SEM,  $n = 3$ , from 3 independent experiments with similar results. **(d)** mRNA amounts for IL-17A, IL-17F, and NR4A2 in CRTC2-mutant T cells under Th17 differentiation conditions. Treatment with PGE<sub>2</sub> indicated. Data represent the mean  $\pm$  SEM,  $n = 3$ , from 3 independent experiments with similar results. **(e)** Immunoblot showing effect of PGE<sub>2</sub> and forskolin (FSK) on CRTC2 dephosphorylation and CREB phosphorylation in CD4 T cells under Th17 differentiation conditions. Statistical analysis were performed with unpaired Student's t-test. Differences were considered statistically significant at  $P < 0.05$  (\*  $P < 0.05$ ; \*\*  $P < 0.005$  and \*\*\*  $P < 0.0005$ ).

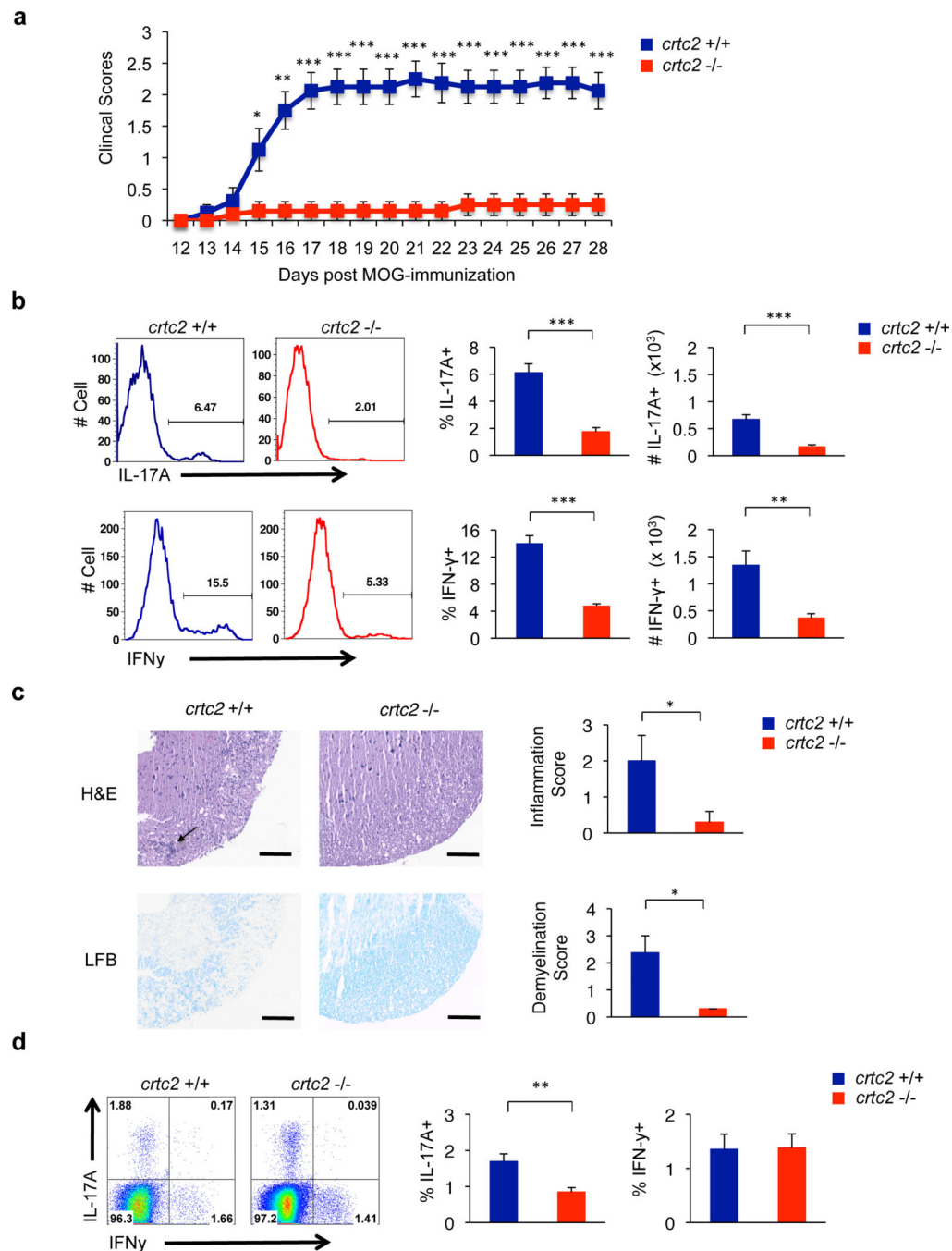




**Figure 2. CREB and CRTC2 regulate the expression of IL-17A and IL-17F**

(a) Location of CRE sites on the mouse IL-17A and IL-17F promoters. (b) Effect of retrovirally encoded dominant negative CREB polypeptide (ACREB) on Th17 differentiation. IL-17A levels were determined by flow cytometry. The number in each quadrant indicates the frequency of cells. Data are representative of 3 experiments. Bar graphs represent the mean of percentage (right)  $\pm$  SEM,  $n = 3$ , from 3 independent experiments. (c) Effect of phosphorylation-defective constitutively active CRTC2 on expression of IL-17A and IL-17F reporters in 293T cells. Effect of Forskolin (FSK) shown.

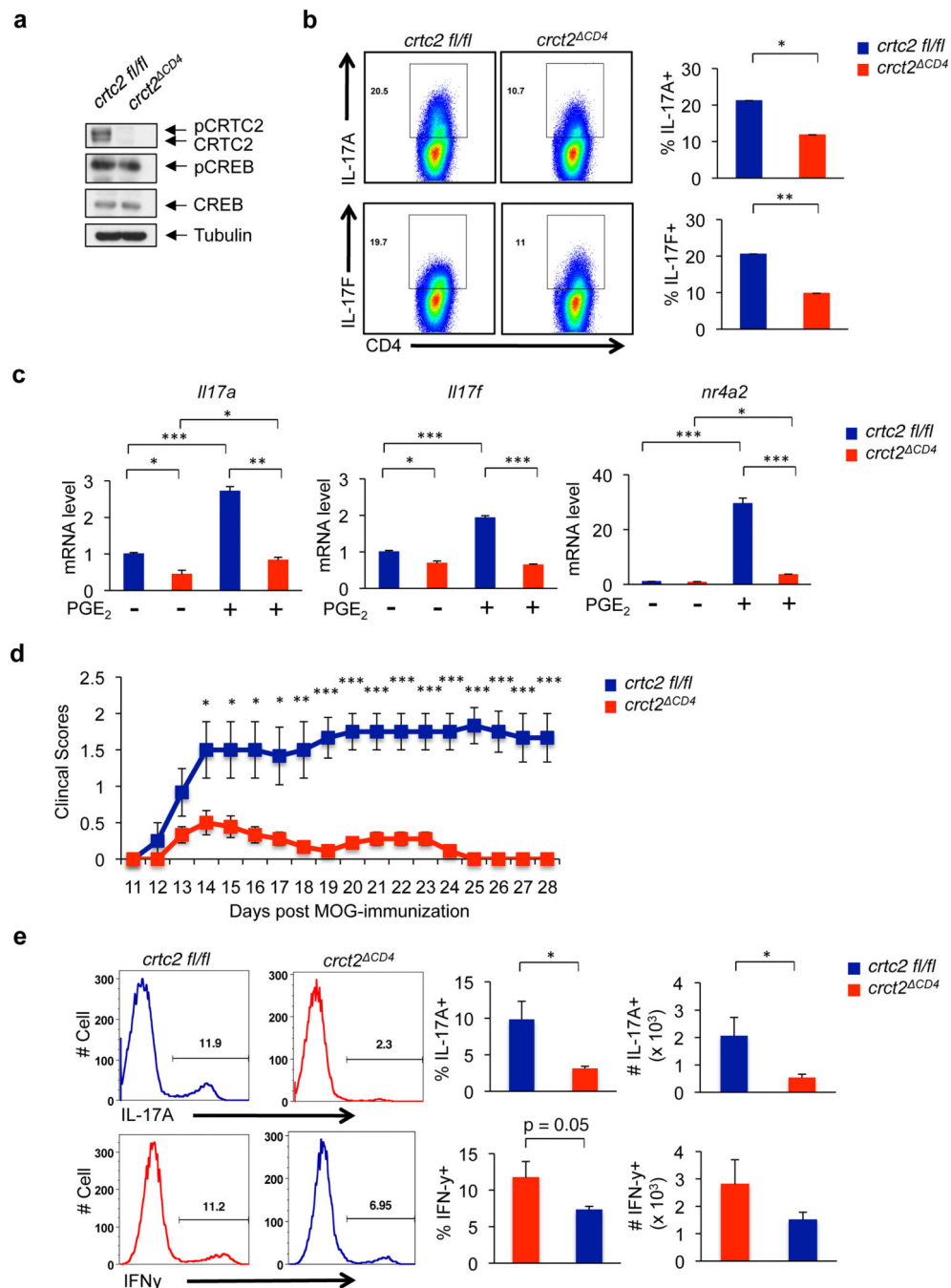
Bar graphs represent the mean of relative luciferase activity relative to co-transfected *RSV*  $\beta$ -gal reporter  $\pm$  SEM, n = 3, from 3 independent experiments. **(d)** Co-expression of A-CREB and constitutively active CRTC2 (CRTC2AA) on expression of IL-17A and IL-17F reporters in 293T cells. Bar graphs represent the mean of relative luciferase activity relative to co-transfected *RSV*  $\beta$ -gal reporter  $\pm$  SEM, n = 3, from 3 independent experiments. **(e)** Chromatin Immunoprecipitation (ChIP) assay of sorted naïve CD4 T cells cultured under Th17 polarization conditions. Effect of PGE<sub>2</sub> on recruitment of CRTC2 to IL-17A and IL-17F promoters shown. Bar graphs represent the mean  $\pm$  SEM, n = 3, from 3 independent experiments. Statistical analysis were performed with unpaired Student's t-test. Differences were considered statistically significant at P < 0.05 (\* P < 0.05; \*\* P < 0.005 and \*\*\* P < 0.0005).



### Figure 3. CRTC2-mutant mice are resistant to EAE

(a) Clinical scores of wild type and CRTC2-mutant littermates following MOG<sub>35-55</sub> immunization. Wild type (n = 8) and CRTC2-mutant (n = 10) animals received 400  $\mu$ g of MOG<sub>35-55</sub> peptide plus Complete Freund's Adjuvant (CFA) on days 0 and 7 and 250 ng pertussis toxin on days 0 and 2. Each line represents the average score of the mice. Similar results were obtained in three independent studies. Data represent the mean  $\pm$  SEM. (b) Decreased Th17 cells in CRTC2-mutant mice following MOG<sub>35-55</sub> immunization. T cells were isolated from pooled brain and spinal cord samples from mice in panel a on day 28 as

described in methods. T cells were then stimulated with PMA and Ionomycin for 5 hours. IL-17A (top) and IFN- $\gamma$  (bottom) levels were determined by flow cytometry. Histograms are gated on live CD4 T cells. The electronic gate indicates the frequency of IL-17A+ (top) or IFN- $\gamma$  (bottom) CD4 T cells. Bar graphs represent the mean of percentage (left) and cell number (right)  $\pm$  SEM; wild type (n = 8) and CRT2 mutant (n = 10) animals. (c) The spinal cord was dissected at day 28 and stained with H&E (top) or Luxol fast blue (LFB) (bottom), and both cell infiltration and demyelination were scored. Arrow indicates infiltrating cells. (scale bars, 100  $\mu$ m). Bar graphs represent the mean  $\pm$  SEM; wild type (n = 4) and CRT2 mutant (n = 5) animals. (d) Decreased Th17 cells in draining lymph nodes of CRT2-mutant mice 7 days after MOG<sub>35-55</sub> immunization. T cells were stimulated with PMA and Ionomycin for 5 hours. Cytokine levels determined by flow cytometry. Plots are gated on live CD4 T cells. Number in each quadrant indicates cell frequency. Bar graphs represent the mean of percentage  $\pm$  SEM; wild type (n = 5) and CRT2 mutant (n = 5) animals. Similar results were obtained in two independent studies. Statistical analysis were performed with unpaired Student's t-test. Differences were considered statistically significant at P < 0.05 (\* P < 0.05; \*\* P < 0.005 and \*\*\* P < 0.0005).



#### Figure 4. Decreased Th17 differentiation and EAE in *Crtc2*<sup>CD4</sup> mice

(a) Immunoblot showing CRTC2 protein amounts in control and *Crtc2*<sup>CD4</sup> Th17 cells. (b and c) Relative differentiation of Th17 cells from CRTC2 floxed<sup>CD4cre</sup> or control (CRTC2fl/fl) CD4<sup>+</sup> T cells. Frequency of IL-17A (top) and IL-17F (bottom) secreting Th17 cells from CRTC2-deficient or CRTC2fl/fl T cells under Th17 differentiation conditions. Data are representative of 3 experiments with similar results. Bar graphs represent the mean of percentage (left) and cell number (right)  $\pm$  SEM, n = 3, from 3 independent experiments. (d) *il17a* and *il17f* mRNA amounts from CRTC2floxed<sup>CD4cre</sup> T cells under

Th17 differentiation conditions. Cells treated with vehicle or PGE2 indicated. Data represent the mean  $\pm$  SEM, n = 3, from 3 independent experiments with similar results. **(d)** *Crtc2*<sup>CD4</sup> mice are resistant to EAE. *CRTC2*fl/fl (n = 6) and *Crtc2*<sup>CD4</sup> (n = 9) mice received 400  $\mu$ g of MOG35-55 peptide plus CFA on days 0 and 7 and 200 ng pertussis toxin on days 0 and 2. Mice were scored as previously described in 3a. Each line represents the average score of the mice. Similar results were obtained in two independent studies. Data represent the mean  $\pm$  SEM, from 2 independent experiments with similar results. **(e)** Th17 cell numbers in the CNS of *CRTC2*fl/fl or *Crtc2*<sup>CD4</sup> mice following MOG<sub>35-55</sub> immunization. Histograms are gated on live CD4+ T cells. The electronic gate indicates the frequency of IL-17A+ (top) or IFN- $\gamma$  (bottom) levels. Bar graphs represent the mean of percentage (left) and cell number (right)  $\pm$  SEM; *CRTC2* fl/fl (n = 6) and *Crtc2*<sup>CD4</sup> (n = 9). Statistical analysis were performed with unpaired Student's t-test. Differences were considered statistically significant at P < 0.05 (\* P < 0.05; \*\* P < 0.005 and \*\*\* P < 0.0005).