

SCIENTIFIC REPORTS



OPEN

Bioelectric-calcineurin signaling module regulates allometric growth and size of the zebrafish fin

Jacob M. Daane¹, Jennifer Lanni^{1,2}, Ina Rothenberg³, Guiscard Seebohm³, Charles W. Higdon⁴, Stephen L. Johnson⁴ & Matthew P. Harris¹

The establishment of relative size of organs and structures is paramount for attaining final form and function of an organism. Importantly, variation in the proportions of structures frequently underlies adaptive change in morphology in evolution and maybe a common mechanism underlying selection. However, the mechanism by which growth is integrated within tissues during development to achieve proper proportionality is poorly understood. We have shown that signaling by potassium channels mediates coordinated size regulation in zebrafish fins. Recently, calcineurin inhibitors were shown to elicit changes in zebrafish fin allometry as well. Here, we identify the potassium channel *kcnk5b* as a key player in integrating calcineurin's growth effects, in part through regulation of the cytoplasmic C-terminus of the channel. We propose that the interaction between *Kcnk5b* and calcineurin acts as a signaling node to regulate allometric growth. Importantly, we find that this regulation is epistatic to inherent mechanisms instructing overall size as inhibition of calcineurin is able to bypass genetic instruction of size as seen in *sof* and wild-type fins, however, it is not sufficient to re-specify positional memory of size of the fin. These findings integrate classic signaling mediators such as calcineurin with ion channel function in the regulation of size and proportion during growth.

The establishment of relative proportion of structures and organs is essential for the normal physiology and function of an organism. The study of differential growth of structures in development and in the evolution of form has a rich history¹. A key advance in our understanding differential growth stems from the work of D'Arcy Thompson and his efforts to define the underlying rules of coordinated transformations in form². This foundational work was leveraged by Huxley and Teissier who formalized scaling relationships between structures within organisms as a power law that details the relative proportion of structures^{3,4}. This law provides a scale-independent means of comparing growth in development and among species.

A common mechanism for the establishment of organ size and the relative proportions of structures is through differential sensitivity of organs to a systemic growth signal such as insulin-like growth factors (IGF) or growth hormone (GH)^{5,6}. However, there is substantial evidence for an organ-intrinsic capacity to establish relative size that is robust to such broad systemic signals. Transplanted organs will frequently reach their target size even when cultured in ectopic locations⁷⁻⁹. Intrinsic regulation of size in structures is also observed in cases in which organs will accelerate growth back to a seemingly pre-ordained growth trajectory following growth-limiting insults, such as nutrient deprivation or illness^{10,11}. This "catch-up growth" is also seen during epimorphic regeneration, wherein growth rate is dependent on the amount of tissue lost such that recovery of the original form occurs within the same time window; this suggests that relative growth rates are guided by *retained* positional cues within tissues¹²⁻¹⁵. How growth is integrated with positional information within the organ to achieve proper proportion remains unclear.

An effective strategy to understand growth and regulation of size is to analyze mutants or experimental conditions in which scaling properties have been altered. Through genetic screens in the zebrafish, several mutants have been identified that have adult fins that are reduced in size as well as mutants in which fins grow beyond their

¹Department of Genetics, Harvard Medical School; Department of Orthopedic Research, Boston Children's Hospital, 300 Longwood Avenue, Boston, MA, 02115, USA. ²Department of Biology, Wheaton College, Norton, MA, 02766, USA. ³Institute for Genetics of Heart Diseases (IfGH), Department of Cardiovascular Medicine, University Hospital Muenster, Muenster, Germany. ⁴Department of Genetics, Washington University Medical School, Saint Louis, MO, 63110, USA. Correspondence and requests for materials should be addressed to M.P.H. (email: harris@genetics.med.harvard.edu)

normal limit^{16–23}. The *another longfin* mutant was identified as having enlarged fins and barbels²⁴. We have previously shown that *alf* is caused by a specific gain-of-function point mutation in the potassium channel *kcnk5b*, a member of the TWIK/TASK two pore family (K_{2P}) of potassium channels²⁰. Supporting a role for ion regulation in establishing proportion, the *shortfin* (*sof*) mutant has been mapped back to mutations in the gap junction *connexin43* (*cx43/gja1*)^{18,25}. Though both gap junctions and potassium channels have important roles in physiology and cell biology, these initial findings in the zebrafish fin are surprising in that they uncover a specific role for local bioelectric signaling in the regulation and coordination of growth.

Insight into the mechanisms regulating coordinated growth also comes from pharmacological regulation of cell signaling during development. Inhibition of calcineurin in developing and regenerating fins by FK506 and cyclosporin A specifically increases the size of the resulting fin²⁶. Calcineurin is a protein phosphatase known to affect transcription through direct binding and dephosphorylation of the NFAT family of transcription factors²⁷. Analysis of the patterning and gene expression profiles in overgrown fins treated with FK506 led Kujawski and colleagues to suggest that positional information of the fin was specifically altered by calcineurin inhibition. Under this hypothesis, activation of calcineurin triggers a proximal-like growth program that leads to enhanced proliferation to re-specify larger fin sizes²⁶.

Here, we extend analysis into mechanisms of size regulation by potassium channels and calcineurin using the zebrafish fin as a model. We show that FK506 can mirror the growth effects of activated *Kcnk5b*, and can override genetic determination of size. Importantly, we demonstrate that *Kcnk5b* function is a key component to the ability of FK506 to regulate growth. Through our genetic and experimental analyses, we demonstrate that the growth-mediating properties of FK506 do not re-specify positional memory in the fin, but rather act to maintain heightened rate of growth during regeneration of the fin. These data advance our understanding of how size is regulated during growth and provide a regulatory link between bioelectric and classical signaling pathways in the regulation of growth and proportion.

Results

Skeletal phenotypes of fins treated with FK506 compared to mutants affecting fin proportion.

Fins are composed of multiple segmented rays of dermal bone. Elongation of the fin occurs through sequential addition of these bony segments to the distal fin tip. The zebrafish fin-ray segments are regularly patterned such that each segment is of roughly same length along the proximal-distal axis. While the segmentation pattern of the fin rays can be dissociated from total fin length²⁸, mutants with altered fin size are often accompanied by a change in size of segments, consistent with alterations in the rate of growth^{17,20,25}. The fin segments in *kcnk5b/alf* mutant are generally elongated, while those of the *shortfin* mutant are shorter^{18,20} (Fig. S1).

As segmentation patterns are influenced by mutations that alter fin size, we asked whether FK506 treatment had an effect on segmentation patterning. We focused primarily on fin regeneration, which recapitulates growth properties that occur during fin development. During fin regeneration, both the missing fin tissue and segmentation patterns are precisely restored. Thus, regeneration assays can serve as a foundation for exploring the genetic contributions of positional identity and memory, growth rate, and patterning. Treatment of regenerating fins with the calcineurin inhibitors FK506 and cyclosporin A led to dose-dependent coordinated overgrowth of fin regenerates (Fig. S1E)²⁶. FK506-treated fins also exhibited elongated fin ray segments, similar to those observed in *kcnk5b/alf* mutants (Fig. S1E–G). Surprisingly, FK506 treatment of *cx43/shortfin* regenerating fins also resulted in elongated fin ray segments (Fig. S1H).

FK506 treatment regulates growth independently of memory of size. As treatment of fins with FK506 appears to bypass the genetic specification of normal fin length in wild-type fish²⁶, we sought to define the growth characteristics of inhibiting calcineurin in the background of different mutants with altered fin size. Similar to wildtype, when cut to 50% of their initial size, the fins of short-finned (*cnx43/sof*) and long-finned (*kcnk5b/alf*) fish regenerate back to their pre-amputation size over a similar time period despite their vastly different starting lengths (Fig. 1). However, FK506-treatment of regenerating fins from both wild-type and *cnx43* short-finned mutants leads to an increased rate of growth in each group, resulting in the formation of similarly sized, larger fins in both genotypes (Fig. 1). Oddly, the shape and size of FK506-treated fins from *cx43/sof* mutants were indistinguishable from treated wild-type fins (Fig. S1H). Of note, FK506-treatment of fish with gain-of-function of *kcnk5b* activity does not lead to an additional increase in the size of the regenerate or rate of its growth over untreated mutants (Fig. 1). All fins treated with FK506 regrow at comparably increased rates, regardless of genotype or previous size. These data suggest that the effect of calcineurin on fin growth is acting at, or downstream of, mechanisms specifying size. Further, the phenotypic similarities between *alf* and those of FK506-treated fins raise the potential that these two mechanisms may be integrated.

Kcnk5b activity is critical for growth effects of FK506. Fish deficient for *kcnk5b* have normal fin proportions and growth²⁰. To assess the role of *Kcnk5b* in calcineurin growth regulation, we resected the pectoral fins of *kcnk5b*^{-/-} fish and asked if the channel is needed for the FK506 growth response. Unexpectedly, the growth effects driven by FK506 treatment are suppressed in *kcnk5b*^{-/-} fish (Fig. 2A–C). This effect was seen in both pectoral fin as well as caudal fin regeneration (Fig. 2D). These data reveal that *Kcnk5b* is a critical component of FK506-mediated regulation of growth and size. Some additional growth occurs after FK506 treatment in *kcnk5b*^{-/-} fish, raising the possibility that residual function of the *kcnk5a* paralogue or other targets of FK506 may contribute in part to the FK506 response.

Modification of *kcnk5b* function by calcineurin. *Kcnk5b* could mediate FK506 growth effect indirectly or through modification of calcineurin regulation. Increasing the levels of wild-type *kcnk5b* locally in the fin is sufficient to induce fin overgrowth²⁰. As large changes in transcription are observed in regenerating fins

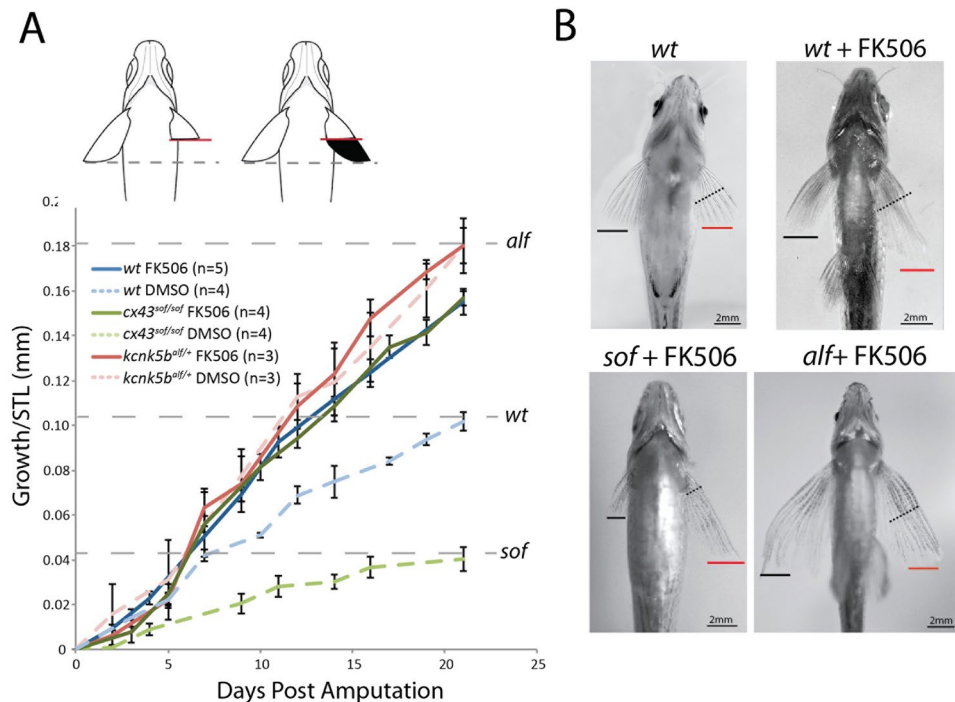


Figure 1. Calcineurin inhibition is sufficient to override genetic encoding of size. **(A)** Regenerative growth of zebrafish pectoral fins after resection to ~50% of pre-cut fin length at 0 days post amputation in different genetic backgrounds with short- (*cx43^{sof/sof}*) or long- (*kcnk5b^{alf}*) fin size relative to wild-type fish. Dashed lines indicate pre-cut pectoral fin length. Data normalized to standard length (STL) of each fish. ANOVA genotype by treatment interaction test $F(2,23) = 27.89$, $p < 0.0001$. Pairwise comparisons (ANOVA p-value): *alf* FK506-*alf* DMSO (1.0), *alf* DMSO-*sof* FK506 (0.25), *alf* DMSO-*wt* FK506 (0.25), *wt* FK506-*sof* FK506 (1.0), *sof* FK506-*sof* DMSO (< 0.0001), *wt* FK506-*wt* DMSO (0.0013). **(B)** Representative ventral view of pectoral fins after regeneration. Black line indicates unoperated pectoral fin length. Red line indicates pectoral fin length after treatment with FK506 during regeneration. Black dashed line highlights site of amputation. Growth rate of FK506-treated regenerating caudal fins. **(D)** Caudal fins were resected to 50% of their original size and treated with FK506. Growth rate is analyzed through 9 days post amputation, when regenerative growth rate for DMSO treated fins begins to slow. Two-tailed t-test $p < 0.0007$ for suppression of growth in the absence of *kcnk5b*. Error bars represent \pm SEM.

treated with FK506²⁶, we hypothesized that FK506 mediated overgrowth could be due to upregulation of *kcnk5b* expression levels. However, we find that expression of *kcnk5b* is not significantly altered in wild-type regenerating fins after FK506 treatment (Fig. 3A). To test the potential for direct modulation of channel activity by FK506/calcineurin, we assessed the change in conductance of Kcnk5b channel variants in *Xenopus* oocytes. Oocytes expressing wild-type zebrafish Kcnk5b show decreased conductance when treated with FK506 (Fig. 3D,E; see Nam *et al.*²⁹). Similarly, treatment of oocytes expressing *kcnk5b* with VIVIT, an independent peptide inhibitor of calcineurin, showed a comparable decrease in conductance, supporting a role of calcineurin in regulation of channel activity (Fig. 3E inset).

It has been shown that the activity of another KCNK two-pore potassium channel family member, Kcnk18/TRESK, is regulated by direct binding of calcineurin to the intracellular loop of the channel. This binding affects downstream dephosphorylation events on conserved serine residues on the C-terminus of the channel^{30,31}. Intriguingly, we identified a putative calcineurin binding site in the cytoplasmic C-terminus of zebrafish Kcnk5b that is similar to that identified in KCNK18/TRESK (Fig. 3B). Czirják *et al.* previously demonstrated that an isoleucine to alanine mutation in this domain in TRESK attenuated the effect of calcineurin and its binding to the channel³⁰. We mutated the co-responding residue in the presumptive binding site in Kcnk5b (I290A; Fig. 3B) and assessed the effect on conductance of the channel in oocytes. Oocytes expressing Kcnk5b/I290A had lower conductance than wildtype, but were similar to wild-type channels treated with FK506 (Fig. 3C–E). Importantly, the Kcnk5b/I290A expressing oocytes were also non-responsive to FK506 treatment. Thus, the effect of the altering the molecular characteristics of this site on the Kcnk5b C-terminal intracellular domain is comparable in effect to chemical inhibition of calcineurin by FK506. This result suggests that, similar to KCNK18, the activity of Kcnk5b is modulated by calcineurin through interactions with the cytoplasmic C-terminus.

The *alf* mutation affects the last transmembrane domain of the channel located just prior to the predicted calcineurin binding site (Perathoner *et al.*²⁰, Fig. S3). In an effort to screen for further variants affecting growth within this region, we used CRISPR-targeted Cas9 genetic editing with guides targeted to the fifth exon of *kcnk5b*, which contains the transmembrane and C-terminus, and screened adults for somatic clones sufficient to cause

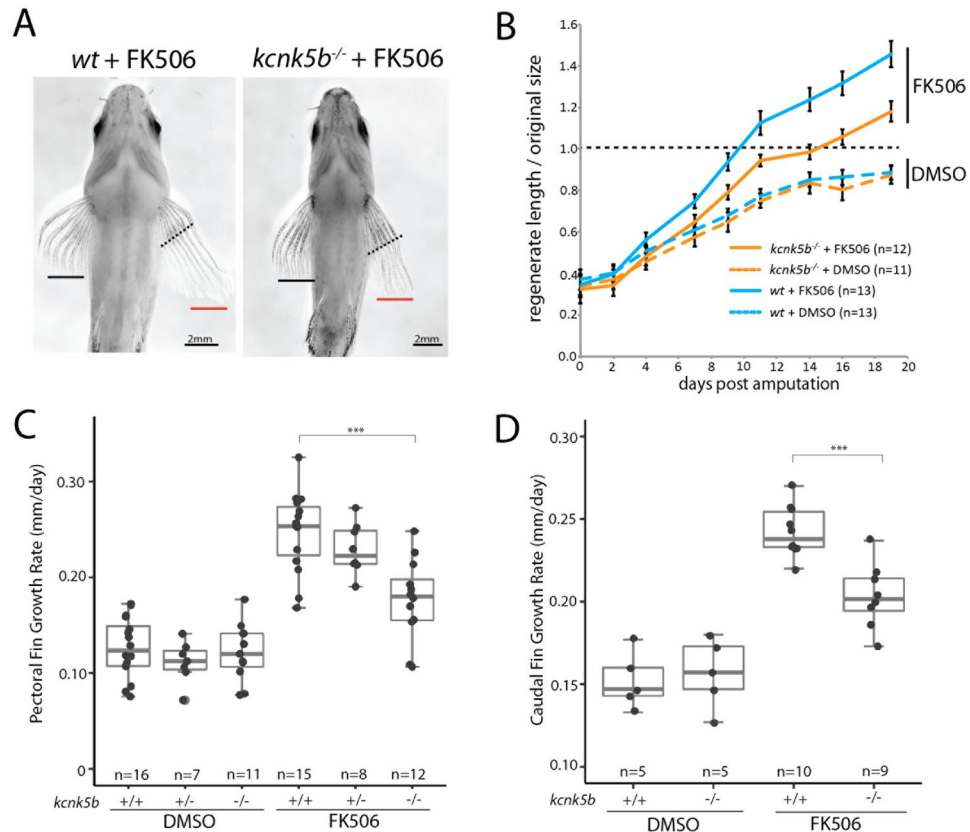


Figure 2. *Kcnk5b* mediates the effect of calcineurin in regulating proportion. (A) Example of growth of pectoral fins of wildtype or *kcnk5b* deletion mutants regenerating after treatment with FK506. Dashed line indicates plane of section; black bar extent of growth of untreated fin; red, resected fin. (B) Growth rates of wildtype and *kcnk5b* deficient zebrafish. Dashed line, size of original pre-cut fin. Error bars represent \pm SEM. ANOVA genotype by treatment interaction $F(1,45) = 6.59$, $p = 0.014$. Pairwise comparisons (ANOVA p-value): *kcnk5b*^{-/-} FK506-wt FK506 (0.0013), *kcnk5b*^{-/-} DMSO-wt DMSO (1.0), *kcnk5b*^{-/-} FK506-*kcnk5b*^{-/-} DMSO (0.022). (C) Growth rate of regenerating fins of different *kcnk5b* genotypes treated with FK506. Gray dots represent individual fish. Two-tailed t-test $p < 0.0002$ for suppression of growth in the absence of *kcnk5b*. Data is from four independent experiments. (D) Representative ventral view of pectoral fins after regeneration.

overgrowth. We recovered fish having overgrowth caused by guides targeting the transmembrane region of the channel. Analysis of *Kcnk5b* in these clones revealed formation of frameshift mutations leading to early termination (Fig. S3). Thus, loss of the last transmembrane domain and the cytoplasmic tail of *Kcnk5b* is sufficient to lead to increased proportion.

Calcineurin signaling does not re-specify positional cues, rather overrides them. We have demonstrated an interaction between *Kcnk5b* and calcineurin-mediated signaling in regulating growth. However, the ability of this module to specify growth or identity of the fin remains unclear. Kujawski *et al.*²⁶ provide evidence of perdurance of proximal markers in treated fins and suggest that calcineurin inhibition leads to a re-specification of the regenerating tissue to a proximal identity. However, these data are also consistent with the hypothesis that the treatment leads to a sustained increase in the rate of growth that then is associated with broader domains of regional markers in the enlarged regenerated tissue. To address the effect of calcineurin on altering positional information of the fin, we mirrored classic experiments of Maden (1982)³² in regulation of positional identity of limb regenerates in the salamander and asked if limited alteration of calcineurin could re-specify identity of the fin regenerate and thus its interpretation of fate.

We first approached this question by addressing how fins respond when FK506 is removed. Pectoral fins regenerating under the influence of FK506 exhibited increased growth (Figs 2 and S1). However, after removal of the drug, either prior to achieving their original size, or in fins that had surpassed their original size, regenerative growth quickly stopped regardless of the extent of the fin regenerate (Fig. 4A). Thus, FK506 induces an acceleration of growth that requires continual presence of the drug for sustained overgrowth. We extended these studies to address if the identity of the regenerated tissue was altered by treatment with FK506. As amputated fins will regenerate back to a size similar to that originally specified during development, the fin tissue remaining after amputation retains information concerning size and proportion that is then integrated in the regenerate. However, if overgrown fins caused by FK506 inhibition of calcineurin are resected, either into the original fin tissue or within a regenerated portion of the fin, these resulting regenerates grew only to the original size of the

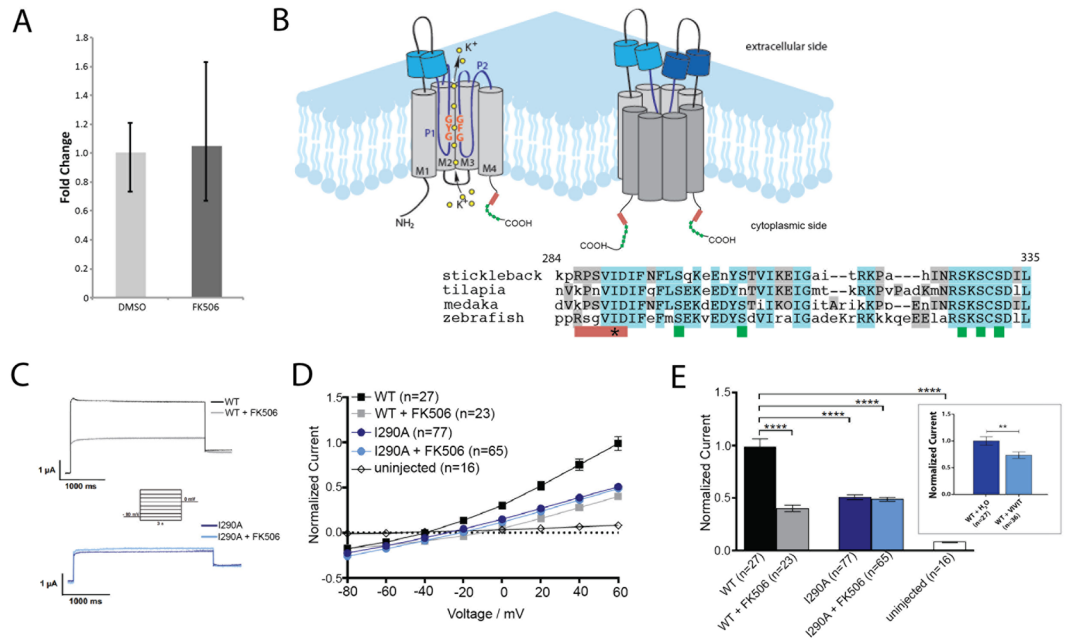


Figure 3. FK506 effect on Kcnk5b activity is modulated by the cytoplasmic domain of the channel. **(A)** qRT-PCR comparing relative levels of *kcnk5b* in FK506-treated, 5-day post-amputation pectoral fin blastemas to values of DMSO-treated controls ($n = 5$, \pm SEM). **(B)** Multiple sequence alignment of Kcnk5b protein highlighting putative calcineurin binding domain with resemblance to calcineurin binding in TRESK (red bar, PQIVID³⁰ and a nearby suite of highly conserved serine residues (green bars). Asterisk indicates site of mutagenesis in (C–E) (I290A). Alignment generated by MUSCLE⁵⁵. Diagram adapted from⁵⁶. **(C)** Representative electrophysiology current traces from voltage clamp recordings in *Xenopus* oocyte injected with wild-type or mutant I290A Kcnk5b cRNA and treated with FK506 or DMSO. The membrane potential was clamped at a reference potential of -80 mV and then varied by incremental 20 mV steps to a range of -100 mV to $+60$ mV. **(D)** Current is suppressed in wild-type Kcnk5b homodimers through treatment with FK506 or by mutation of the calcineurin binding site (I290A). **(E)** Recorded currents were normalized to the value recorded for oocytes injected with the wild-type channel at $+60$ mV. *Inset*, *Xenopus* oocytes expressing wild-type zebrafish Kcnk5b were injected with VIVIT peptide or carrier. Patch clamp experiments registered the resulting conductance. $**p < 0.001$, n , number of oocytes assessed.

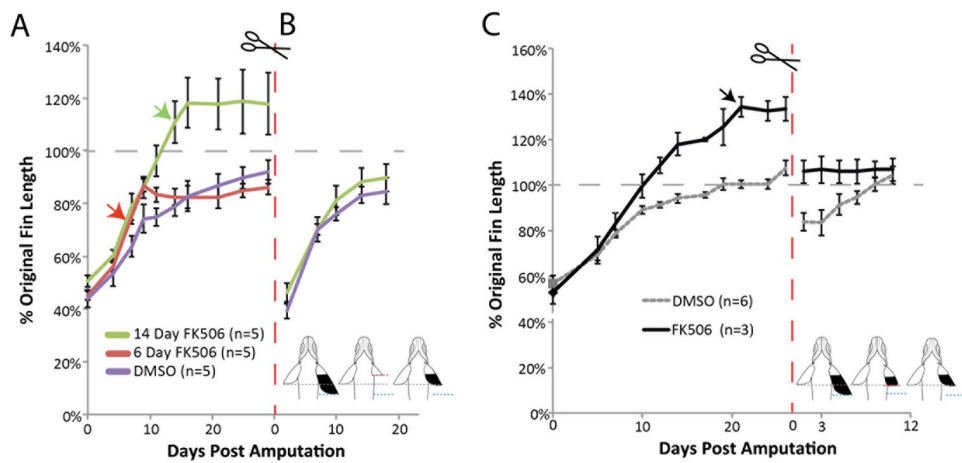


Figure 4. Calcineurin inhibition establishes regenerative growth rate independently of positional identity. **(A)** Pulse of FK506 treatment for 6 or 14 days post-amputation to assess effects of transient inhibition of calcineurin by FK506 on growth and patterning of the fin. Fins were cut to 50% original length and allowed to regenerate in the presence of FK506. Arrows indicate end of drug treatment ($n = 5$ fish per treatment group). **(B)** Subsequent regeneration of the pectoral fins from **(A)** in the absence of FK506 after resection at original cut site to determine if fin allometry was re-set to a larger size through previous FK506 treatment. **(C)** Second regeneration of FK506-treated fins cut at a site within the regenerated tissue demonstrating memory of original positional information and recovery of wild-type size within the pectoral fin. Gray dashed line indicates pre-cut fin length. Red dashed lines indicate second resection. Error bars represent \pm SEM.

fin prior to treatment with FK506 (Fig. 4B,C). Similarly, FK506-treated overgrown fins cut beyond the original wild-type fin length failed to grow further upon amputation without the presence of the drug (Fig. 4C). Similar effects were seen in when tested in both pectoral as well as caudal fin regenerates (Fig. S2). Thus, *Kcnk5b*/calcineurin signaling does not lead to lasting alterations in positional identity, but rather regulates rate of growth leading to enhanced fin proportions.

Discussion

Bioelectric integration of growth and form. Bioelectric potential is manifest as a resting voltage state of cells (*V_{mem}*). While it is clear that specialized cells such as nerves and cardiomyocytes have honed the regulation of electrical potential for specific functions, a broader role of this signaling in development and homeostasis is becoming apparent as it is necessary for normal pattern and growth of diverse organ systems^{33–37}. Natural and experimental changes of resting potential can have broad effects in morphogenesis. A key property of bioelectric signaling is the capacity to coordinate responses across cells and tissues. Many tissues are electrically coupled through the action of gap junctions, and localized signals can expand via paracrine signaling by local fluctuations in electrical fields³⁸. Thus, the integration of cellular- and tissue-level responses to inductive signals as well as integration of patterning cues within developing organs can be orchestrated through electrical coupling of cells such that a unified structure is formed and maintained. Perturbations of such electrically coupled-developmental systems could be a factor for the coordinated transformations observed in evolution^{2,39} and broad patterning phenotype observed in some diseases^{37,40}. The role of *kcnk5b* in regulation of proportion was identified in genetic screens through its actions in causing altered scaling properties of adult fins (Perathoner *et al.*²⁰). We show that *Kcnk5b* is a key component to increased fin growth caused by calcineurin inhibition. Importantly, our work here demonstrates that *Kcnk5b*/calcineurin signaling is sufficient to increase growth regardless of innate size and genotype and thus override, but not re-specify, positional identity of the fin.

We demonstrate that *Kcnk5b*, like *Kcnk18*, can signal through calcineurin via a region in its C-terminus. Altering the presumptive binding site on the C-terminus of *Kcnk5b* (I290A) is sufficient to mirror the effect of calcineurin inhibition and to remove sensitivity to FK506 treatment for conductance. FK506 treatment of *Kcnk5b* in oocytes leads to decreased current. Similarly, the I290A mutation also mirrors this response. In contrast, *alf* mutants²⁰ show increased conductance in oocytes. This difference of the direction of conductance with similar growth outcomes may also point to the importance of signaling events downstream of changes in conductance that drive fin growth. The C-terminus of mouse *Kcnk5*/TASK-2 interacts directly with G $\beta\gamma$ subunit of heterotrimeric G-proteins⁴¹, and work on other two pore potassium channels, such as TREK-1 and TREK-2, has revealed dynamic regulation by cAMP/PKA, DAG/PIP/PKC and nitric oxide/cGMP/PKG pathways⁴². Modulation of *Kcnk5b* activity by conductance, or through interactions with its C-terminus, may act to adjust and/or respond to changes in voltage to regulate growth rate. Interestingly, we have found that premature truncation mutations leading to channels that lack the last transmembrane domain and the C-terminus of *Kcnk5b* result in fin overgrowth comparable to that seen in the *alf* mutant, which affects the identical region (F241Y, Fig. S3). As null alleles of *kcnk5b* do not cause an overgrowth phenotype, the truncation mutation appears to cause an increase in function of the channel. Alteration of the pore structure or conformation/presence of the C-terminus may cause dysregulated channel activity leading to overgrowth. The regulation of calcineurin may reflect downstream response to changes in conductance or conformation and thus, link calcium signaling to changes in pore conductance and/or conformation. In support of these findings, there is evidence that polarization-dependent differentiation of myoblasts requires calcineurin function in a manner that is sensitive to dephosphorylation of the Kir2.1 channel^{43,44}. Thus, integrated bioelectric and secondary signaling mechanisms may have broader roles in development and physiology that previously expected.

Coordination of growth and proportion. Regulation of overgrowth by *Kcnk5b*/calcineurin signaling is coordinated among diverse tissues of the developing and regenerating fin to establish a larger, functional structure. This coordination may be attained through a re-interpretation of positional information within the fin such that regenerating tissues replace the missing components with tissue in register with the distal edge of the remaining fin stump. Positional information within the fin may be set up and driven by differential gene expression patterns in development^{45,46}. Rabinowitz *et al.*⁴⁶ detail expression profiles of wild-type fins that support dynamic regulation of gene expression across the proximal-distal aspect of the fin. Interestingly, a significant class of genes differentially isolated in these studies was ion channels, suggesting that bioelectric signaling may be a key factor of this asymmetry and establishment of positional cues. The work on calcineurin by Kujawski *et al.*²⁶ also would point to calcineurin signaling as mediating position and being able to re-specify identity when altered. This mechanism was founded on extended gene expression domains in the proximal component of the fin and delayed distal bifurcation of the rays after calcineurin inhibition. However, an alternate explanation for the observed changes in pattern is that the expanded proximal molecular and anatomical identities observed in FK506-treated fins are a consequence of increased growth rate, such that larger regional domains, interpreted as position, are generated rather than specific changes in identity *per se*. This hypothesis would explain observed overgrowth as well as extended branching of the fin, but would be independent of changes in positional memory. Alternatively, positional information is independent of size-instructive signals suggesting that modification of identity markers stemming from *Kcnk5b*/calcineurin signaling is coincident, but independent from, mechanisms of size determination and relative proportion.

Our data link the growth regulation of *Kcnk5b* and calcineurin and demonstrate that their function is not sufficient to re-specify identity, rather to override it. Establishing, or re-establishing, identity in the fin may require signals present only during development and may not be malleable during regeneration. Long-term treatment of fish during development with FK506 leads to global alterations in growth of the body that make comparison of proportion difficult (Fig. S4). Thus, identification of these developmental cues to regulate proportion and size will

require dissociation by other means. Our findings suggest that the regulation of growth by *Kcnk5b*/calcineurin fulfills the general requirements of a scaling property previously defined by relative growth comparisons and represented by the rate constant of Huxley and Teissier (1939). The encoding and specification of absolute size, however remains undefined.

Methods

Fish Husbandry. The zebrafish AB strains and Tübingen (Tü) strains carrying *albino* mutation were used as background for all experiments. Fish were bred and maintained as previously described⁴⁷. All experimental procedures involving fish conform to AAALAC standards and were approved by institutional IACUC committees. A complete description of the husbandry and environmental conditions in housing for the fish used in these experiments is available as a collection in protocols.io <https://doi.org/10.17504/protocols.io.mrjc54n>.

For all experiments, adult stages defined by reproductively mature fish >3 months old were used for analysis. Mutant alleles used in this work are *alf*^{dt30mh}, *sof*^{fdj7e2}, and *kcnk5b*^{j131x8}.

Fin Regeneration and Measurements. Fish were anesthetized by treatment with tricaine for measurements and pectoral fin amputation. Unless otherwise indicated, pectoral fins of wildtype and mutants were resected to roughly 50% their pre-cut length using standard surgical scissors. Fin length was measured before, during and after regeneration using handheld calipers and measurements were normalized to the fish standard length, determined as the length from the tip of the snout to the posterior end of the caudal peduncle. Fin growth rate was measured for individual fish as the slope of the linear growth regression line over time from the amputation stump through the cessation of growth. Regeneration was considered complete for both treatment groups when the DMSO-treated control fins stopped growing (~3 weeks). ANOVA was used to compare mean fin growth of the genotypes and FK506 treatment groups. A genotype by treatment interaction test assessed whether the effect of FK506 was similar in all genotypes. Post-hoc pairwise comparisons between groups were adjusted for multiple comparisons using the Tukey-Kramer method. Analysis was done with SAS 9.4 (Cary, NC).

FK506 Treatment. Stock FK506 (Sigma) was dissolved in dimethyl sulfoxide (DMSO; Sigma). Fish water was treated with 100 nM FK506 unless otherwise indicated. Up to five individual zebrafish were housed in 1 L of FK506- or DMSO-treated fish water and were fed daily with live artemia. Water and drug were refreshed every other day throughout the duration of the experiment.

qRT-PCR. Five days post amputation, pectoral fin regenerates were collected from five individuals of each treatment group. For RNA extraction, tissue was homogenized in TRIzol Reagent (Invitrogen). cDNA synthesis was performed with oligo dT primers using SuperScript III Reverse Transcription Kit (Invitrogen). qRT-PCR was performed with Power SYBR Green Master Mix (Applied Biosystems) on Applied Biosystems ViiA 7 Real Time PCR System. Cycling conditions: 10 minutes at 95 °C; 40 cycles of 15 seconds at 95 °C followed by 1 minute at 60 °C; melting curve analysis with 15 seconds at 95 °C, 1 minute at 60 °C and 15 seconds at 95 °C. Temperature was varied at 1.6 °C/s. Expression levels were normalized relative to β -actin. ddCt was used to calculate fold change in FK506-treated relative to the average of DMSO-treated fish. *Kcnk5b* primers: 5'-TTGTAGCCGTCTGTGACCAA-3', 5'-AGTACCCACCCAACTGTC-3'. β -actin primers: 5'-CAACAACC TGCTGGGCAAA-3', 5'-GCGTCGATGTCGAAGGTCA-3'.

Electrophysiology. The cDNA of *Kcnk5b* was subcloned into pSGEM for cRNA expression. The plasmid was linearized using *NheI* and cRNA was *in vitro* synthesized using the T7 mMessage mMachine kit (Ambion). *Xenopus laevis* oocytes were provided by Ecocyte Bioscience. Oocyte handling, injection and electrophysiological recordings were as previously described⁴⁸. Briefly, stage V oocytes were injected with 4 ng of cRNA encoding wildtype or mutant I290A *kcnk5b* and stored for 3 days at 18 °C in Barth's solution containing (in mmol/L): 88 NaCl, 1.0 KCl, 2.4 NaHCO₃, 0.33 Ca(NO₃)₂, 0.4 CaCl₂, 0.8 MgSO₄, 5 Tris-HCl, penicillin-G (63 mg/L), gentamicin (100 mg/L), streptomycin sulfate (40 mg/L), theophylline (80 mg/L); pH 7.6. Two-electrode-voltage-clamp recordings were performed at 22 °C using a Turbo Tec-10CD amplifier (NPI electronics), Digidata 1322 A AD/DA-interface and pCLAMP 9.0 software (Axon Instruments Inc./Molecular Devices). Before measurement oocytes were pre-incubated in 0.5% DMSO (control) or in 50 μ M FK506 (InvivoGen) for 1 h at 18 °C in ND96 recording solution containing (in mM): 96 NaCl, 4 KCl, 1.8 MgCl₂, 1.0 CaCl₂, 5 HEPES; pH 7.6. FK506 was dissolved in DMSO and FK506 dilution in ND96 was prepared freshly before every experiment. Recording pipettes were filled with 3 M KCl and had resistances of 0.5–1.5 M Ω . Data were analyzed with Clampfit 9.0 (Molecular Devices Corporation), Excel (Microsoft) and Prism6 (GraphPad Software). p-values were corrected for multiple hypothesis testing using Bonferroni test in Origin software (OriginLab, Northampton, MA). The *Kcnk5b* I290A variant was generated by QuikChange II (Agilent). Mutagenesis primers: 5'-CTCGCTCTGGAGTCGCTGACATCTTTGAG-3', 5'-CTCAAAGATGTCAGCGACTCCAGAGCGAG-3'.

CRISPR generation of *kcnk5b* somatic clones. The fifth and terminal exon of zebrafish *kcnk5b* encodes the last transmembrane domain and cytoplasmic C-terminus. We designed guide RNAs (gRNA) tiling this exon to screen for sufficiency of deletions in this region to affect fin growth in mosaic injected animals. The ChopChop online was used to design gRNAs to limit predicted off-target gRNA cutting^{49,50}. The pool of 5 distinct gRNAs were simultaneously injected to blanket the start of the exon. These gRNAs were assembled according to Gangan *et al.*⁵¹. Briefly, oligos containing the gRNA target were annealing to a universal oligo containing the tracrRNA and SP6 promoter. The annealed oligo ends were then filled in with T4 polymerase for 20 minutes at 12 °C. gRNA was synthesized from this oligo template using Ambion MEGAscript SP6 Kit. For transcription efficiency, the first two bases of each gRNA were changed to 'GG' as there is evidence that these bases have less effect on Cas9 cutting efficiency or off-target binding than mutations closer to the PAM site^{52–54}. gRNAs were injected into single cell

zebrafish embryos at a concentration of 50 ng/ μ l blanket and 300 ng/ μ l Cas9. To screen for deletion efficiency, the target exon was amplified from pools of three 24 hour embryos and the resulting amplicons were heated to 95 °C and cooled at -0.1 °C per second to form heteroduplexes. Following heteroduplex PCR, a T7 endonuclease digestion for 30 minutes at 37 °C in NEB Buffer 2 was used to generate deletions in the presence of Cas9-induced indels. Primers for colony PCR cloning of the exon 5 screen: 5'-GGCAAATCAAACCTGGTTAGTCC-3', 5'-CGCTGTAG TCCTCGACCTTC-3'. gRNA sequences: 5'-ATCACTTTGTTCCATACAG-3', 5'-GACAAAGAA TCTGTAGAGAG-3', 5'-GGATCTACCTGGCCTTGCT-3', 5'-TTGGAACGTGCATATGGTGG-3', 5'-CGTCAT GGTGGGCAGCCTG-3'.

Significance Statement. The diversity of forms in Nature is frequently derived from variation in the proportions of organs and tissues. The ability of organs and tissues to attain proper proportions is generally unknown. Recent work has shown that inhibition of the activity of calcineurin modulates size of fins in zebrafish. Here, we show that the action of a potassium channel, *Kcnk5b* is required for growth caused by calcineurin inhibition. Importantly, we show that these factors specify fin growth independently from inherent cues of size and positional identity of the fin. Our work shows that this signaling node acts as a molecular rheostat, able to integrate bioelectric and calcium-mediated signaling systems to dial relative growth rates guiding ultimate fin size.

References

- Gayon, J. History of the concept of allometry. *Am. Zool.* **40**, 748–758 (2000).
- Thompson, D. W. *On growth and form*. (Cambridge University press, 1917).
- Huxley, J. & Teissier, G. Terminology of Relative Growth. *Nature* **137**, 780–781 (1936).
- Huxley, J. *Problems in Relative Growth*. (Lincoln MacVeagh, The Dial Press, 1932).
- Bryant, P. J. & Simpson, P. Intrinsic and Extrinsic Control of Growth in Developing Organs. *Q. Rev. Biol.* **59**, 387–415 (1984).
- Conlon, I. & Raff, M. Size Control in Animal Development. *Cell* **96**, 235–244 (1999).
- Twitty, V. C., Schwind, J. L. & Joseph, L. The growth of eyes and limbs transplanted heteroplastically between two species of *Amblystoma*. *J. Exp. Zool.* **59**, 61–86 (1931).
- Felts, W. J. L. Transplantation studies of factors in skeletal organogenesis. I. The subcutaneously implanted immature long-bone of the rat and mouse. *Am. J. Phys. Anthropol.* **17**, 201–215 (1959).
- Dittmer, J. E., Goss, R. J. & Dinsmore, C. E. The growth of infant hearts grafted to young and adult rats. *Am. J. Anat.* **141**, 155–60 (1974).
- Prader, A., Tanner, J. M. & von Harnack, G. A. Catch-up growth following illness or starvation: An example of developmental canalization in man. *J. Pediatr.* **62**, 646–659 (1963).
- Finkelstein, G. P., Lui, J. C. & Baron, J. Catch-up growth: cellular and molecular mechanisms. *World Rev. Nutr. Diet.* **106**, 100–4 (2013).
- Spallanzani, L. *An essay on animal reproductions (Trans. M. Maty)*. (London: T. Becket and P.A. de Hondt, 1769).
- Morgan, T. H. The physiology of regeneration. *J. Exp. Zool.* **3**, 457–500 (1906).
- Tassava, R. & Goss, R. Regeneration rate and amputation level in fish fins and lizard tails. *Growth* **30**, 9–21 (1966).
- Lee, Y., Grill, S., Sanchez, A., Murphy-Ryan, M. & Poss, K. D. Fgf signaling instructs position-dependent growth rate during zebrafish fin regeneration. *Development* **132**, 5173–83 (2005).
- Huang, C. *et al.* Collagen IX is required for the integrity of collagen II fibrils and the regulation of vascular plexus formation in zebrafish caudal fins. *Dev. Biol.* **332**, 360–70 (2009).
- Goldsmith, M. I., Fisher, S., Waterman, R. & Johnson, S. L. Saltatory control of isometric growth in the zebrafish caudal fin is disrupted in long fin and rapunzel mutants. *Dev. Biol.* **259**, 303–317 (2003).
- Iovine, M. K., Higgins, E. P., Hindes, A., Coblitz, B. & Johnson, S. L. Mutations in *connexin43* (*GJA1*) perturb bone growth in zebrafish fins. *Dev. Biol.* **278**, 208–19 (2005).
- Green, J., Taylor, J. J., Hindes, A., Johnson, S. L. & Goldsmith, M. I. A gain of function mutation causing skeletal overgrowth in the rapunzel mutant. *Dev. Biol.* **334**, 224–34 (2009).
- Perathoner, S. *et al.* Bioelectric signaling regulates size in zebrafish fins. *PLoS Genet.* **10**, e1004080 (2014).
- Fisher, S., Jagadeeswaran, P. & Halpern, M. E. Radiographic analysis of zebrafish skeletal defects. *Dev. Biol.* **264**, 64–76 (2003).
- Eeden, F. J. M. V. *et al.* Genetic analysis of fin formation in the zebrafish, *Danio rerio*. *Development* **123**, 255–262 (1996).
- Iovine, M. K. & Johnson, S. L. Genetic analysis of isometric growth control mechanisms in the zebrafish caudal Fin. *Genetics* **155**, 1321–9 (2000).
- Haffter, P. *et al.* The identification of genes with unique and essential functions in the development of the zebrafish, *Danio rerio*. *Development* **123**, 1–36 (1996).
- Sims, K., Eble, D. M. & Iovine, M. K. *Connexin43* regulates joint location in zebrafish fins. *Dev. Biol.* **327**, 410–8 (2009).
- Kujawski, S. *et al.* Calcineurin Regulates Coordinated Outgrowth of Zebrafish Regenerating Fins. *Dev. Cell* **28**, 573–587 (2014).
- Hogan, P. G., Chen, L., Nardone, J. & Rao, A. Transcriptional regulation by calcium, calcineurin, and NFAT. *Genes Dev.* **17**, 2205–32 (2003).
- Schulte, C. J., Allen, C., England, S. J., Juárez-Morales, J. L. & Lewis, K. E. *Evx1* is required for joint formation in zebrafish fin dermoskeleton. *Dev. Dyn.* **240**, 1240–8 (2011).
- Nam, J. H. *et al.* Expression of *TASK-2* and its upregulation by B cell receptor stimulation in WEHI-231 mouse immature B cells. *Am. J. Physiol. Cell Physiol.* **300**, C1013–22 (2011).
- Czirják, G. & Enyedi, P. Targeting of calcineurin to an NFAT-like docking site is required for the calcium-dependent activation of the background K^+ channel, *TRESK*. *J. Biol. Chem.* **281**, 14677–82 (2006).
- Czirják, G., Tóth, Z. E. & Enyedi, P. The two-pore domain K^+ channel, *TRESK*, is activated by the cytoplasmic calcium signal through calcineurin. *J. Biol. Chem.* **279**, 18550–8 (2004).
- Maden, M. Vitamin A and pattern formation in the regenerating limb. *Nature* **295**, 672–675 (1982).
- Beane, W. S., Morokuma, J., Lemire, J. M. & Levin, M. Bioelectric signaling regulates head and organ size during planarian regeneration. *Development* **140**, 313–322 (2013).
- Levin, M. Endogenous bioelectrical networks store non-genetic patterning information during development and regeneration. *J. Physiol.* **592**, 2295–305 (2014).
- Levin, M. Molecular bioelectricity: how endogenous voltage potentials control cell behavior and instruct pattern regulation *in vivo*. *Mol. Biol. Cell* **25**, 3835–50 (2014).
- Bates, E. Ion Channels in Development and Cancer. *Annu. Rev. Cell Dev. Biol.* **31**, 231–47 (2015).
- Dahal, G. R. *et al.* An inwardly rectifying K^+ channel is required for patterning. *Development* **139**, 3653–3664 (2012).
- Levin, M. Morphogenetic fields in embryogenesis, regeneration, and cancer: Non-local control of complex patterning. *BioSystems* **109**, 243–261 (2012).

39. Gould, S. J. Allometry and size in ontogeny and phylogeny. *Biol. Rev. Camb. Philos. Soc.* **41**, 587–640 (1966).
40. Bates, E. A. A potential molecular target for morphological defects of fetal alcohol syndrome: Kir2.1. *Curr. Opin. Genet. Dev.* **23**, 324–329 (2013).
41. Añazco, C. *et al.* G protein modulation of K2P potassium channel TASK-2: a role of basic residues in the C terminus domain. *Pflugers Arch.* **465**, 1715–26 (2013).
42. Enyedi, P. & Czirják, G. Molecular Background of Leak K⁺ Currents: Two-Pore Domain Potassium Channels. *Physiol. Rev.* **90**, 559–605 (2010).
43. König, S., Béguet, A., Bader, C. R. & Bernheim, L. The calcineurin pathway links hyperpolarization (Kir2.1)-induced Ca²⁺ signals to human myoblast differentiation and fusion. *Development* **133**, 3107–3114 (2006).
44. Hinard, V., Belin, D., König, S., Bader, C. R. & Bernheim, L. Initiation of human myoblast differentiation via dephosphorylation of Kir2.1 K⁺ channels at tyrosine 242. *Development* **135**, 859–867 (2008).
45. Tornini, V. A. & Poss, K. D. Keeping at arm's length during regeneration. *Dev. Cell* **29**, 139–145 (2014).
46. Rabinowitz, J. S. *et al.* Transcriptomic, proteomic, and metabolomic landscape of positional memory in the caudal fin of zebrafish. *Proc. Natl. Acad. Sci.* 201620755 (2017).
47. Nüsslein-Volhard, C. & Dahm, R. *Zebrafish: a practical approach.* (Oxford University Press, 2002).
48. Seebohm, G. *et al.* Regulation of KCNQ4 potassium channel prepulse dependence and current amplitude by SGK1 in *Xenopus* oocytes. *Cell Physiol Biochem* **16**, 255–262 (2005).
49. Montague, T. G., Cruz, J. M., Gagnon, J. A., Church, G. M. & Valen, E. CHOPCHOP: A CRISPR/Cas9 and TALEN web tool for genome editing. *Nucleic Acids Res.* **42**, 401–407 (2014).
50. Labun, K., Montague, T. G., Gagnon, J. A., Thyme, S. B. & Valen, E. CHOPCHOPv2: a web tool for the next generation of CRISPR genome engineering. *Nucleic Acids Res.* **44**, gkw398 (2016).
51. Gagnon, J. A. *et al.* Efficient mutagenesis by Cas9 protein-mediated oligonucleotide insertion and large-scale assessment of single-guide RNAs. *PLoS One* **9**, e98186 (2014).
52. Hwang, W. Y. *et al.* Efficient genome editing in zebrafish using a CRISPR-Cas system. *Nat. Biotechnol.* 1–3 (2013).
53. Hwang, W. Y. *et al.* Heritable and precise zebrafish genome editing using a CRISPR-Cas system. *PLoS One* **8**, e68708 (2013).
54. Fu, Y. *et al.* High-frequency off-target mutagenesis induced by CRISPR-Cas nucleases in human cells. *Nat. Biotechnol.* **31**, 822–6 (2013).
55. Edgar, R. C. MUSCLE: multiple sequence alignment with high accuracy and high throughput. *Nucleic Acids Res.* **32**, 1792–7 (2004).
56. Perathoner, S. Potassium Channels and Growth Control: Identification and Characterisation of Mutations Affecting Proportional Growth of the Fin in the Cyprinid *Danio rerio*. <http://edoc.mpg.de/display.epl?mode=doc&id=686270&col=65&grp=323> (Eberhardt Karls University Tübingen, 2013).

Acknowledgements

The authors wish to thank Drs. Christopher Antos and Satu Kujawski for their discussions of data on calcineurin prior to publication. *Sof* mutant lines were kindly provided by Dr. Kathryn Iovine. This work was supported in part by NSF GRFP and DDIG DEB-1407092 to JMD, and Grant HD084985 from NICHD, a John Simon Guggenheim Fellowship to MPH as well as support from the Children's Orthopaedic Surgery Foundation at Boston Children's Hospital. This work was conducted with statistical support from Harvard Catalyst | The Harvard Clinical and Translational Science Center (National Center for Research Resources and the National Center for Advancing Translational Sciences, National Institutes of Health Award 8UL1TR000170-05 and financial contributions from Harvard University and its affiliated academic health care centers). The content is solely the responsibility of the authors and does not necessarily represent the official views of Harvard Catalyst, Harvard University and its affiliated academic health care centers, or the National Institutes of Health.

Author Contributions

J.M.D. and M.P.H. designed the experiments and wrote the manuscript. J.M.D. and J.L. performed fin regeneration and drug treatment experiments. *Kcnk5b* deletion line generated by C.W.H. and S.L.J. Electrophysiology and analysis was performed by I.R. and G.S. All authors provided critical feedback and helped shape the manuscript.

Additional Information

Supplementary information accompanies this paper at <https://doi.org/10.1038/s41598-018-28450-6>.

Competing Interests: The authors declare no competing interests.

Publisher's note: Springer Nature remains neutral with regard to jurisdictional claims in published maps and institutional affiliations.



Open Access This article is licensed under a Creative Commons Attribution 4.0 International License, which permits use, sharing, adaptation, distribution and reproduction in any medium or format, as long as you give appropriate credit to the original author(s) and the source, provide a link to the Creative Commons license, and indicate if changes were made. The images or other third party material in this article are included in the article's Creative Commons license, unless indicated otherwise in a credit line to the material. If material is not included in the article's Creative Commons license and your intended use is not permitted by statutory regulation or exceeds the permitted use, you will need to obtain permission directly from the copyright holder. To view a copy of this license, visit <http://creativecommons.org/licenses/by/4.0/>.

© The Author(s) 2018