



# Regulation of Myofilament Contractile Function in Human Donor and Failing Hearts

Kerry S. McDonald<sup>1\*</sup>, Laurin M. Hanft<sup>1</sup>, Joel C. Robinett<sup>1</sup>, Maya Guglin<sup>2</sup> and Kenneth S. Campbell<sup>2,3</sup>

<sup>1</sup> Department of Medical Pharmacology and Physiology, University of Missouri, Columbia, MO, United States, <sup>2</sup> Division of Cardiovascular Medicine, University of Kentucky, Lexington, KY, United States, <sup>3</sup> Department of Physiology, University of Kentucky, Lexington, KY, United States

## OPEN ACCESS

### Edited by:

Norio Fukuda,  
Jikei University School of Medicine,  
Japan

### Reviewed by:

Martina Krüger,  
Heinrich Heine University  
of Düsseldorf, Germany  
Margaret Westfall,  
University of Michigan, United States  
John Peter Konhilas,  
University of Arizona, United States

### \*Correspondence:

Kerry S. McDonald  
mcdonaldks@missouri.edu

### Specialty section:

This article was submitted to  
Striated Muscle Physiology,  
a section of the journal  
Frontiers in Physiology

**Received:** 20 January 2020

**Accepted:** 16 April 2020

**Published:** 25 May 2020

### Citation:

McDonald KS, Hanft LM,  
Robinett JC, Guglin M and  
Campbell KS (2020) Regulation  
of Myofilament Contractile Function  
in Human Donor and Failing Hearts.  
*Front. Physiol.* 11:468.  
doi: 10.3389/fphys.2020.00468

Heart failure (HF) often includes changes in myocardial contractile function. This study addressed the myofibrillar basis for contractile dysfunction in failing human myocardium. Regulation of contractile properties was measured in cardiac myocyte preparations isolated from frozen, left ventricular mid-wall biopsies of donor ( $n = 7$ ) and failing human hearts ( $n = 8$ ). Permeabilized cardiac myocyte preparations were attached between a force transducer and a position motor, and both the  $\text{Ca}^{2+}$  dependence and sarcomere length (SL) dependence of force, rate of force, loaded shortening, and power output were measured at  $15 \pm 1^\circ\text{C}$ . The myocyte preparation size was similar between groups (donor: length  $148 \pm 10 \mu\text{m}$ , width  $21 \pm 2 \mu\text{m}$ ,  $n = 13$ ; HF: length  $131 \pm 9 \mu\text{m}$ , width  $23 \pm 1 \mu\text{m}$ ,  $n = 16$ ). The maximal  $\text{Ca}^{2+}$ -activated isometric force was also similar between groups (donor:  $47 \pm 4 \text{ kN} \cdot \text{m}^{-2}$ ; HF:  $44 \pm 5 \text{ kN} \cdot \text{m}^{-2}$ ), which implicates that previously reported force declines in multi-cellular preparations reflect, at least in part, tissue remodeling. Maximal force development rates were also similar between groups (donor:  $k_{tr} = 0.60 \pm 0.05 \text{ s}^{-1}$ ; HF:  $k_{tr} = 0.55 \pm 0.04 \text{ s}^{-1}$ ), and both groups exhibited similar  $\text{Ca}^{2+}$  activation dependence of  $k_{tr}$  values. Human cardiac myocyte preparations exhibited a  $\text{Ca}^{2+}$  activation dependence of loaded shortening and power output. The peak power output normalized to isometric force (PNPO) decreased by  $\sim 12\%$  from maximal  $\text{Ca}^{2+}$  to half-maximal  $\text{Ca}^{2+}$  activations in both groups. Interestingly, the SL dependence of PNPO was diminished in failing myocyte preparations. During sub-maximal  $\text{Ca}^{2+}$  activation, a reduction in SL from  $\sim 2.25$  to  $\sim 1.95 \mu\text{m}$  caused a  $\sim 26\%$  decline in PNPO in donor myocytes but only an  $\sim 11\%$  change in failing myocytes. These results suggest that altered length-dependent regulation of myofilament function impairs ventricular performance in failing human hearts.

**Keywords:** heart failure, human cardiac myocytes, contractile properties, rate of force development, loaded shortening, power output, sarcomere length

## INTRODUCTION

Human heart failure is defined as the inability of the cardiac pump function to meet peripheral demands. Heart failure afflicts ~6 million patients in the US and is associated with 1 in 9 deaths (Benjamin et al., 2018). Most current medication strategies for heart failure are designed to alleviate symptoms by decreasing the hemodynamic load (arterial blood pressure). Thus, new precision-based approaches that focus on the disease mechanisms intrinsic to the myocardium could have a significant impact.

The etiology of human heart failure is complex and encompasses ventricular remodeling and alterations to cardiac myocyte biology, which include energetic deficiencies and alterations in calcium handling and myofilament function. The purpose of this study was to address the myofibrillar basis for contractile dysfunction in failing human myocardium. Regulation of steady-state and dynamic contractile properties was measured in single permeabilized cardiac myocyte preparations isolated from frozen, left ventricular mid-wall biopsies of donor and failing human hearts.

## MATERIALS AND METHODS

Samples were obtained from patients undergoing heart transplants at the University of Kentucky and from organ donors who did not have heart failure. Hearts were handed to a researcher as soon as these were excised from the body. Mid-wall myocardial samples of distal anterior left ventricular free wall were dissected and snap frozen in liquid nitrogen and stored at  $-150^{\circ}\text{C}$  before shipping to the University of Missouri. All procedures were approved by the University of Kentucky Institutional Review Board, and written informed consent was obtained from each patient who had heart failure and from a legally authorized representative of each organ donor. Samples were obtained from seven organ donors (mean age of  $39 \pm 6$ , 3 female, 6 white, 1 African-American), four patients with ischemic heart failure (mean age of  $48 \pm 10$ , 1 female, 3 white, 1 African American), and four patients with non-ischemic heart failure (mean age of  $51 \pm 4$ , 3 female, 3 white, 1 African American). Data are presented as two groups, donor and heart failure (HF).

### Single Permeabilized Myocardial Samples and Functional Measurements

A total of 29 permeabilized single cardiac myocyte preparations from eight hearts from patients who had heart failure and seven hearts from organ donors were analyzed for this work (Table 1). Single permeabilized cardiac myocyte preparations (see Figure 1) were mounted between a force transducer and a motor, and contractile properties were measured during maximal and sub-maximal  $\text{Ca}^{2+}$  activations at long ( $\sim 2.25 \mu\text{m}$ ) and short sarcomere lengths ( $\sim 1.95 \mu\text{m}$ ), which are thought to span the sarcomere working range (Pollack and Huntsman, 1974; Grimm et al., 1980; Guccione et al., 1997; Chung et al., 2018). In brief, cardiac myocyte preparations were attached by placing the ends of the myocyte into stainless steel troughs (25 gauge) and ends were secured by overlaying a 0.5-mm

length of 4–0 monofilament nylon suture (Ethicon, Inc.) and tying the suture into the troughs with loops of 10–0 monofilament (Ethicon, Inc.). The attachment procedure was performed under a stereomicroscope ( $\sim 100\times$  magnification) using finely shaped forceps (McDonald, 2000). Prior to the mechanical measurements, the experimental apparatus was mounted on the stage of an inverted microscope (model IX-70, Olympus Instrument Co., Japan). Mechanical measurements were performed using a capacitance-gauge transducer plus a  $10\times$  amplifier (Aurora Scientific, Inc., Aurora, ON, Canada). Length changes were introduced using a DC torque motor (model 308, Aurora Scientific, Inc.) driven by voltage commands from a personal computer via a 16-bit D/A converter (AT-MIO-16E-1, National Instruments Corp., Austin, TX, United States). Force and length signals were digitized at 1 kHz and stored on a personal computer using LabVIEW for Windows (National Instruments Corp.). Sarcomere length was monitored using an IonOptix SarLen system (IonOptix, Milton, MA, United States), which used a fast Fourier transform algorithm of the video image of the myocyte. Following attachment, the relaxed, permeabilized cardiac myocyte preparation was adjusted to a sarcomere length of  $\sim 2.25 \mu\text{m}$  and passive tension was measured by slacking the preparation in pCa 9.0 solution (McDonald and Moss, 1995; McDonald, 2000). Cardiac myocyte preparation force, rates of force development, and force-velocity and power-load measurements were made at  $15 \pm 1^{\circ}\text{C}$  as previously described (McDonald, 2000; Hinken and McDonald, 2004; Hanft et al., 2017).

### Data and Statistical Analysis

Force redevelopment kinetics ( $k_{tr}$ ) following a slack-restretch maneuver were determined by fitting a single exponential function to the force recovery profile using the equation

$$F = F_{\max}(1 - e^{-k_{tr}t})$$

where  $F$  is tension at time  $t$ ,  $F_{\max}$  is maximal tension, and  $k_{tr}$  is the rate constant of force development.

Myocyte length traces, force-velocity curves, and power-load curves were analyzed as previously described (McDonald, 2000). Myocyte length and sarcomere length traces during loaded shortening were fit to a single decaying exponential equation:

$$L = Ae^{-kt} + C$$

where  $L$  is cell length at time  $t$ ,  $A$  and  $C$  are constants with dimensions of length, and  $k$  is the rate constant of shortening ( $k_{\text{shortening}}$ ). Velocity of shortening at any given time,  $t$ , was determined as the slope of the tangent to the fitted curve at that time point. In this study, loaded shortening velocities were calculated at time equal to 100 ms after the onset of the force clamp.

Hyperbolic force-velocity curves were fit to the relative force-velocity data using the Hill equation (Hill, 1938)

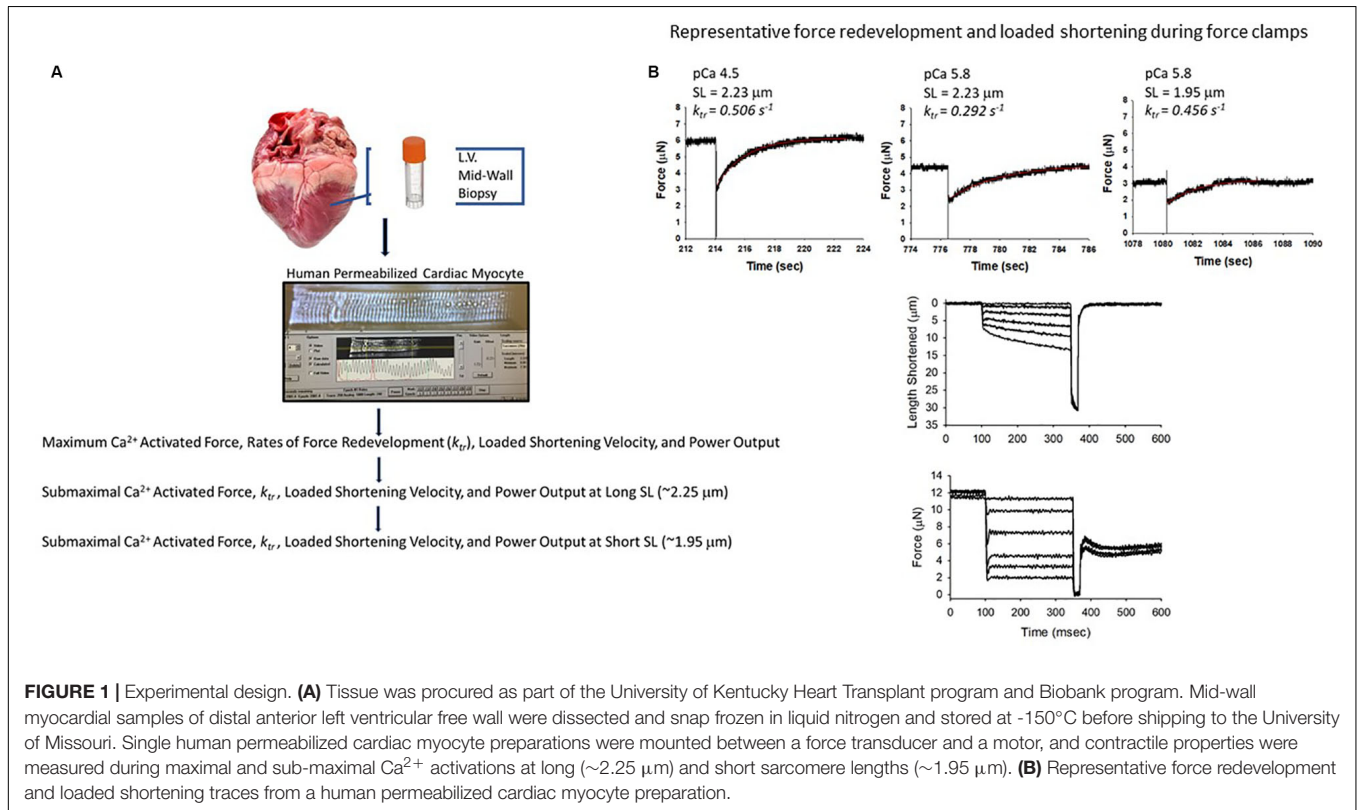
$$(P + a)(V + b) = (P_o + a)b$$

where  $P$  is force during shortening at velocity  $V$ ,  $P_o$  is the maximal isometric force, and  $a$  and  $b$  are constants with

**TABLE 1** | Human permeabilized cardiac myocyte preparations.

	Cardiac myocyte preparations	Length ( $\mu\text{m}$ )	Width ( $\mu\text{m}$ )	Sarcomere length ( $\mu\text{m}$ )	Passive force ( $\text{kN} \cdot \text{m}^{-2}$ )	Peak power (pW)	pCa for half-max. force	Relative force half-max. pCa
Donor	13	148 $\pm$ 10	21 $\pm$ 2	2.26 $\pm$ 0.01	1.91 $\pm$ 0.40	54 $\pm$ 12	5.77 $\pm$ 0.01	0.53 $\pm$ 0.03
HF	16	131 $\pm$ 9	23 $\pm$ 5	2.27 $\pm$ 0.01	1.67 $\pm$ 0.26	43 $\pm$ 25	5.85 $\pm$ 0.01	0.56 $\pm$ 0.02

Values are means  $\pm$  S.E.M.



**FIGURE 1** | Experimental design. **(A)** Tissue was procured as part of the University of Kentucky Heart Transplant program and Biobank program. Mid-wall myocardial samples of distal anterior left ventricular free wall were dissected and snap frozen in liquid nitrogen and stored at  $-150^{\circ}\text{C}$  before shipping to the University of Missouri. Single human permeabilized cardiac myocyte preparations were mounted between a force transducer and a motor, and contractile properties were measured during maximal and sub-maximal  $\text{Ca}^{2+}$  activations at long ( $\sim 2.25 \mu\text{m}$ ) and short sarcomere lengths ( $\sim 1.95 \mu\text{m}$ ). **(B)** Representative force redevelopment and loaded shortening traces from a human permeabilized cardiac myocyte preparation.

dimensions of force and velocity, respectively. Force-velocity data were normalized to isometric force to illustrate condition effects on loaded shortening velocity. Power-load curves were obtained by multiplying force  $\times$  velocity at each relative load on the force-velocity curve, and statistical analysis compared peak normalized power output (PNPO) values, which were obtained by multiplying relative force at optimum power  $\times$  velocity at optimum power. Curve fitting was performed using a customized program written in QBasic, as well as commercial software (SigmaPlot).

The experimental data were analyzed in SAS 9.1.3 (SAS Institute, Cary, NC, United States) using linear mixed effects. As previously described (Haynes et al., 2014), this statistical approach accounts for the hierarchical structure of the data (values obtained from different numbers of myocyte preparations from hearts procured from organ donors and patients who had heart failure) and has greater statistical power than standard ANOVA for this type of design. Compound symmetry was assumed for the covariance structure, and *post-hoc* analyses were performed using Tukey-Kramer corrections.  $P < 0.05$  was accepted as a statistically significant difference.  $N$  = number of

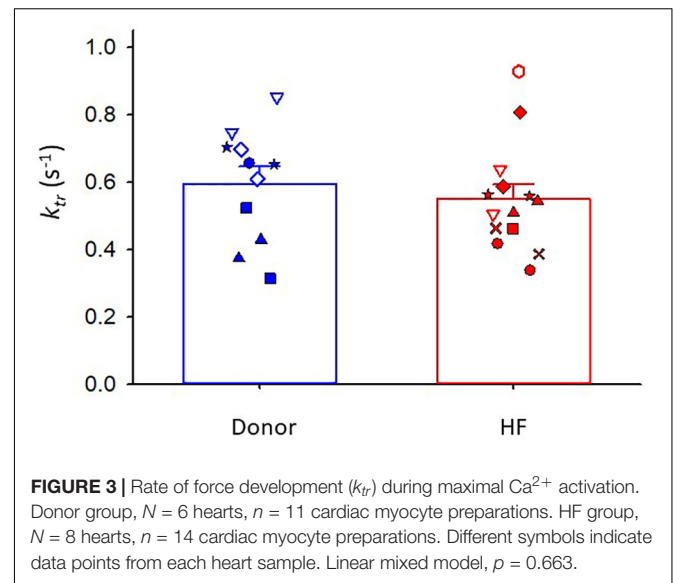
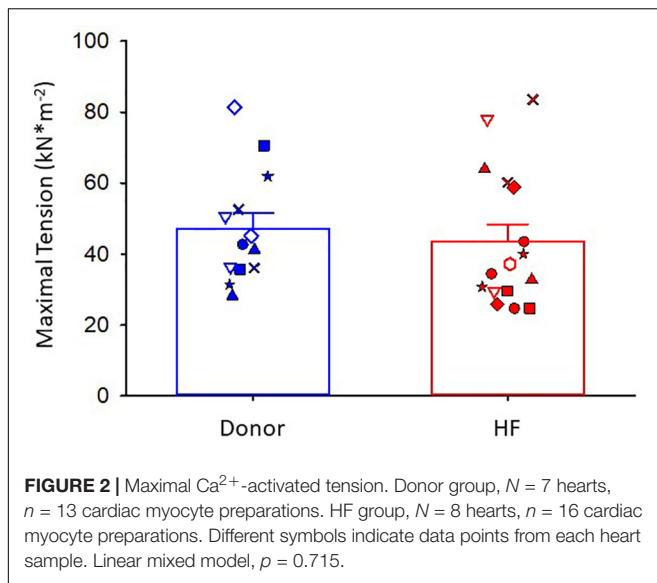
hearts.  $n$  = number of cardiac myocyte preparations. Values are expressed as means  $\pm$  SEM.

## RESULTS

### Contractile Properties of Human Single Permeabilized Cardiac Myocyte Preparations

Permeabilized human cardiac myocyte preparations were similar in size between donor and heart failure groups (Table 1). At sarcomere length (SL)  $\sim 2.25 \mu\text{m}$ , passive tension was similar between groups (donor:  $1.91 \pm 0.40$  vs. HF:  $1.67 \pm 0.26 \text{ kN} \cdot \text{m}^{-2}$ ) (Table 1).

Maximal  $\text{Ca}^{2+}$ -activated tension was similar between donor and heart failure cardiac myocyte preparations (donor:  $47 \pm 4 \text{ kN} \cdot \text{m}^{-2}$ ; HF:  $44 \pm 5 \text{ kN} \cdot \text{m}^{-2}$ ) (Figure 2). For all figures, the different symbols indicate data points from each heart sample to indicate variability among tissues. After the entire experimental protocol (see Figure 1), the final maximal



$\text{Ca}^{2+}$ -activated tension was  $0.902 \pm 0.037$  of the initial pCa 4.5 force in donor preparations and  $0.806 \pm 0.032$  in heart failure preparations ( $p = 0.064$ ).

Maximal rates of force development (as indexed by the rate constant,  $k_{tr}$ ) were also similar between donor and heart failure groups Donor:  $k_{tr} = 0.60 \pm 0.05 \text{ s}^{-1}$ ; HF:  $k_{tr} = 0.55 \pm 0.04 \text{ s}^{-1}$ ) (Figure 3). All human cardiac myocyte preparations exhibited a robust  $\text{Ca}^{2+}$  activation dependence of  $k_{tr}$ , i.e., lower  $k_{tr}$  values at half-maximal  $\text{Ca}^{2+}$  activation ( $p < 0.001$ ) (Figure 4). In addition,  $k_{tr}$  values increased at short sarcomere length (SL) compared with those at long SL during sub-maximal  $\text{Ca}^{2+}$  activations ( $p < 0.001$ ).

The maximal absolute power generating capacity was similar between donor and heart failure groups (donor:  $1.23 \pm 0.15 \mu\text{W} \cdot \text{mg}^{-1}$ ; HF:  $1.07 \pm 0.14 \mu\text{W} \cdot \text{mg}^{-1}$ ) (Figure 5). Statistical analysis showed that the peak normalized power output (PNPO) fell as  $\text{Ca}^{2+}$  activation was reduced in cells from organ donors and patients who had heart failure (Figures 6A,B). At sub-maximal  $\text{Ca}^{2+}$  activations, PNPO also decreased at short sarcomere length in both groups. Interestingly, Figure 6C shows that cells from failing hearts exhibited a markedly reduced sarcomere length dependence of PNPO ( $p = 0.004$ ). This indicates that normalized power falls further as sarcomere length is reduced in cells from organ donors than it does in cells from patients who had heart failure.

No differences were observed in either maximal  $\text{Ca}^{2+}$ -activated tension or  $k_{tr}$  values between sexes in cardiac myocyte preparations from donor or heart failure samples (Supplementary Figures S1, S2).

## DISCUSSION

### Brief Summary

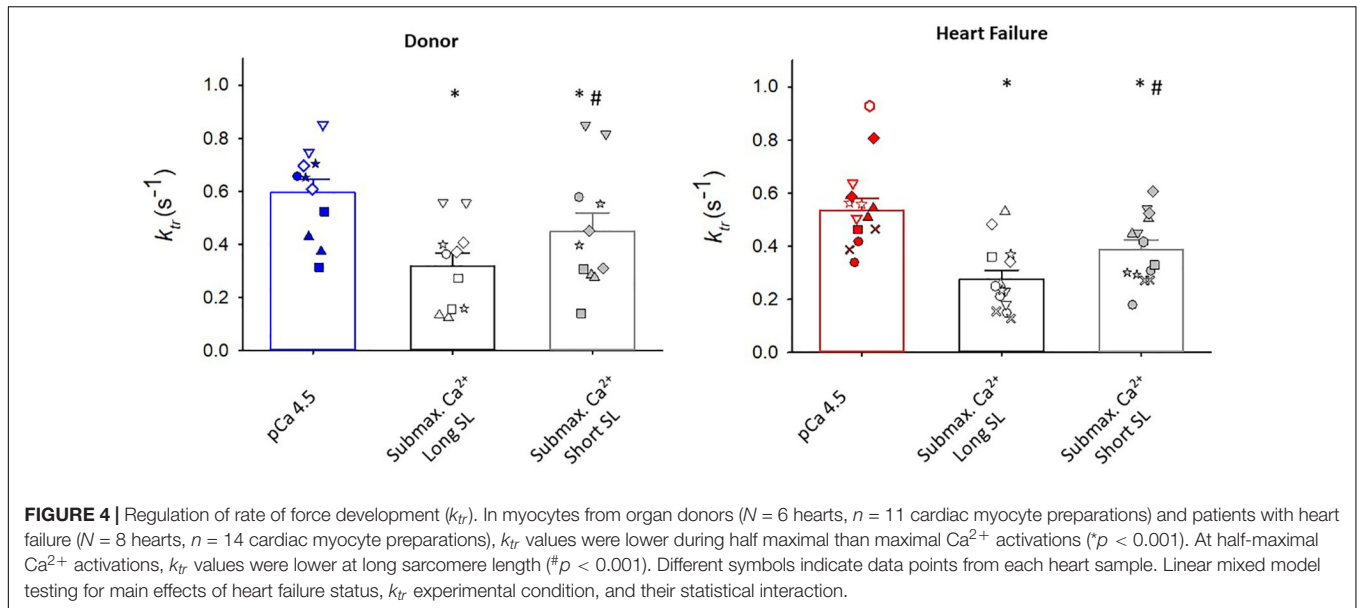
Steady-state and dynamic contractile properties were measured in human single permeabilized cardiac myocyte preparations.

Human cardiac myocytes exhibited both  $\text{Ca}^{2+}$  activation and sarcomere length dependence of force development and power output. Maximal  $\text{Ca}^{2+}$ -activated contractile force, rates of force development, and power were similar between human donor and failing samples. Conversely, the sarcomere length dependence of power was diminished in myofilaments from failing hearts, which provides a sub-cellular, biophysical mechanism for the depressed Frank-Starling relationship in failing human hearts.

### Human Permeabilized Cardiac Myocyte Preparations

For both donor and heart failure samples, human single permeabilized cardiac myocyte preparations displayed  $\text{Ca}^{2+}$  activation dependence of force,  $k_{tr}$  values, loaded shortening, and power output, which has previously been reported in rodent and porcine permeabilized cardiac myocyte preparations (McDonald, 2000; McDonald et al., 2012). Previous studies have reported the  $\text{Ca}^{2+}$  sensitivity of both force (Wolff et al., 1996; van der Velden et al., 2000, van Der Velden et al., 2001; van der Velden et al., 2003, 2006; Kooij et al., 2010; Wijnker et al., 2013; Haynes et al., 2014; Swenson et al., 2017) and rates of force development (Edes et al., 2007) in human permeabilized cardiac myocyte preparations. Our study is the first, to our knowledge, to show the  $\text{Ca}^{2+}$  activation dependence of loaded shortening and power output in human permeabilized cardiac myocyte preparations. Compared with those during maximal  $\text{Ca}^{2+}$  activations, the velocity at optimal power, peak normalized power output, and absolute power output were all lower during half-maximal  $\text{Ca}^{2+}$  activations, which signifies that changes in both force and loaded shortening velocity account for the regulation of human myofilament power output generating capacity by activator [ $\text{Ca}^{2+}$ ]. Also, human cardiac myocyte preparations exhibited a sarcomere length dependence of force,  $k_{tr}$  values, loaded shortening, and power output,





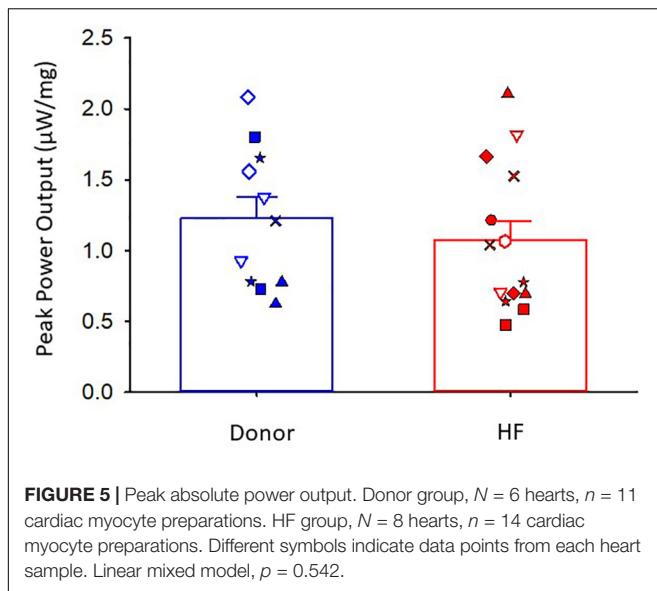
similar to reports on rodent (Fabiato and Fabiato, 1975; Adhikari et al., 2004; Stelzer and Moss, 2006; Korte and McDonald, 2007; Hanft and McDonald, 2009, 2010; Hanft et al., 2016) and porcine (McDonald et al., 2012) permeabilized cardiac myocyte preparations.

### Donor vs. Heart Failure Human Permeabilized Cardiac Myocyte Preparations

Maximal  $\text{Ca}^{2+}$ -activated tension,  $k_{tr}$  values, and absolute power output were similar between donor and heart failure cardiac myocyte preparations. Other studies have reported similar maximal  $\text{Ca}^{2+}$ -activated tensions in human single permeabilized cardiac myocytes obtained from donor and end-stage heart failure samples stored in liquid nitrogen (Wolff et al., 1996; van der Velden et al., 2000, van Der Velden et al., 2001; van der Velden et al., 2003, 2006). In contrast, maximal  $\text{Ca}^{2+}$ -activated tension has been reported to be reduced in single permeabilized cardiac myocytes from small-animal mixed models of heart failure (Belin et al., 2006; de Waard et al., 2007; Edes et al., 2008; Hanft et al., 2017). In addition,  $k_{tr}$  values, loaded shortening, and power output have been reported to be decreased in single permeabilized myocytes from late-stage heart failure in rodent models (Edes et al., 2008; Hanft et al., 2017). The exact reasons for the differences between human and rodent heart failure studies are uncertain but likely arise, at least in part, from confounding variables associated with human patients (e.g., age, sex, medications, disease etiology, genetic variability, fresh vs. frozen samples). Consistent with this, contractile properties showed more variability in human cardiac myocyte preparation in this study compared with those in previous reports on rodent permeabilized cardiac myocyte preparations (Edes et al., 2008; Hanft et al., 2017).

### Length-Dependent Activation of Power in Human Permeabilized Cardiac Myocyte Preparations From Donor vs. Heart Failure Samples

The relationship between ventricular filling and ventricular output was described in the early twentieth century and is known as the Frank-Starling relationship (Frank, 1895; Patterson and Starling, 1914). The functional importance of the Frank-Starling relationship is to dynamically match left and right ventricular outputs and adapt hemodynamics to peripheral demands. The molecular mechanism underlying the Frank-Starling relationship involve sarcomere physical factors, including alterations in inter-filament lattice spacing (Fuchs and Martyn, 2005) and myosin cross-bridge orientation (Ait Mou et al., 2016), perhaps mediated by titin (Cazorla et al., 2001; Fukuda et al., 2003). The Frank-Starling relationship often is markedly depressed in late-stage cardiac failure (Braunwald and Ross, 1964; Ross and Braunwald, 1964; Holubarsch et al., 1996). Depressed Frank-Starling relationships result, at least in part, from the reduced length dependence of the activation of cardiac myofilaments from failing hearts. For instance, studies have reported reduced the length dependence of the  $\text{Ca}^{2+}$  sensitivity of force in single permeabilized cardiac myocyte preparations from failing human hearts (Schwinger et al., 1994; Holubarsch et al., 1996; Sequiera et al., 2013; Wijnker et al., 2014). Our study extended previous studies by examining the length dependence of cardiac myofilament loaded shortening and power output, which ultimately determines ventricular ejection. Interestingly, the length dependence of power was significantly depressed in failing human cardiac myocyte preparations, providing evidence of novel dynamic myofibrillar mechanisms (in addition to the length dependence of steady-state force) for depressed Frank-Starling relationships in failing human hearts. The exact molecular mechanisms for the depressed myofilament length



dependence of power remain to be determined. Certainly, lower levels of PKA-mediated phosphorylation of cardiac myofilament proteins with heart failure may contribute (Wolff et al., 1996; van der Velden et al., 2003; Messer et al., 2007; Copeland et al., 2010; Kooij et al., 2010; Haynes et al., 2014). For instance, PKA phosphorylation and troponin exchange with pseudo-phosphorylation affect the length dependence of force (Kooij et al., 2010; Wijmker et al., 2013, 2014) and have been shown to, in part, restore the length dependence of the  $\text{Ca}^{2+}$  sensitivity of force in failing cardiac myocyte preparations. Another plausible molecular regulator of the length dependence of power is cardiac myocyte binding protein-C (cMyBP-C), a protein that resides in the C-zone of thick filaments and the phosphorylation state is depressed in failing myocardium (Hamdani et al., 2008; Copeland et al., 2010; Kooij et al., 2010; Haynes et al., 2014; Stathopoulou et al., 2016). In addition, preliminary studies from our lab have shown that the sarcomere length dependence of power is regulated by PKA phosphorylation sites on cMyBP-C in a transgenic mouse (Hanft et al., 2019). This finding raises the intriguing possibility that thick filament ON state may contribute to the length dependence of power output, which could be addressed experimentally by small molecules or peptides that regulate thick filament states (Green et al., 2016). There also may be many dynamic changes in sarcomere signals beyond PKA, and the dynamic signaling at the sarcomere may vary widely between “normal” and heart failure myocardia, which requires exploration of sarcomere functional proteomics in response to varied stimuli, e.g., neurohumoral factors, activation frequency (i.e., heart rate), and medications (Hamdani et al., 2008).

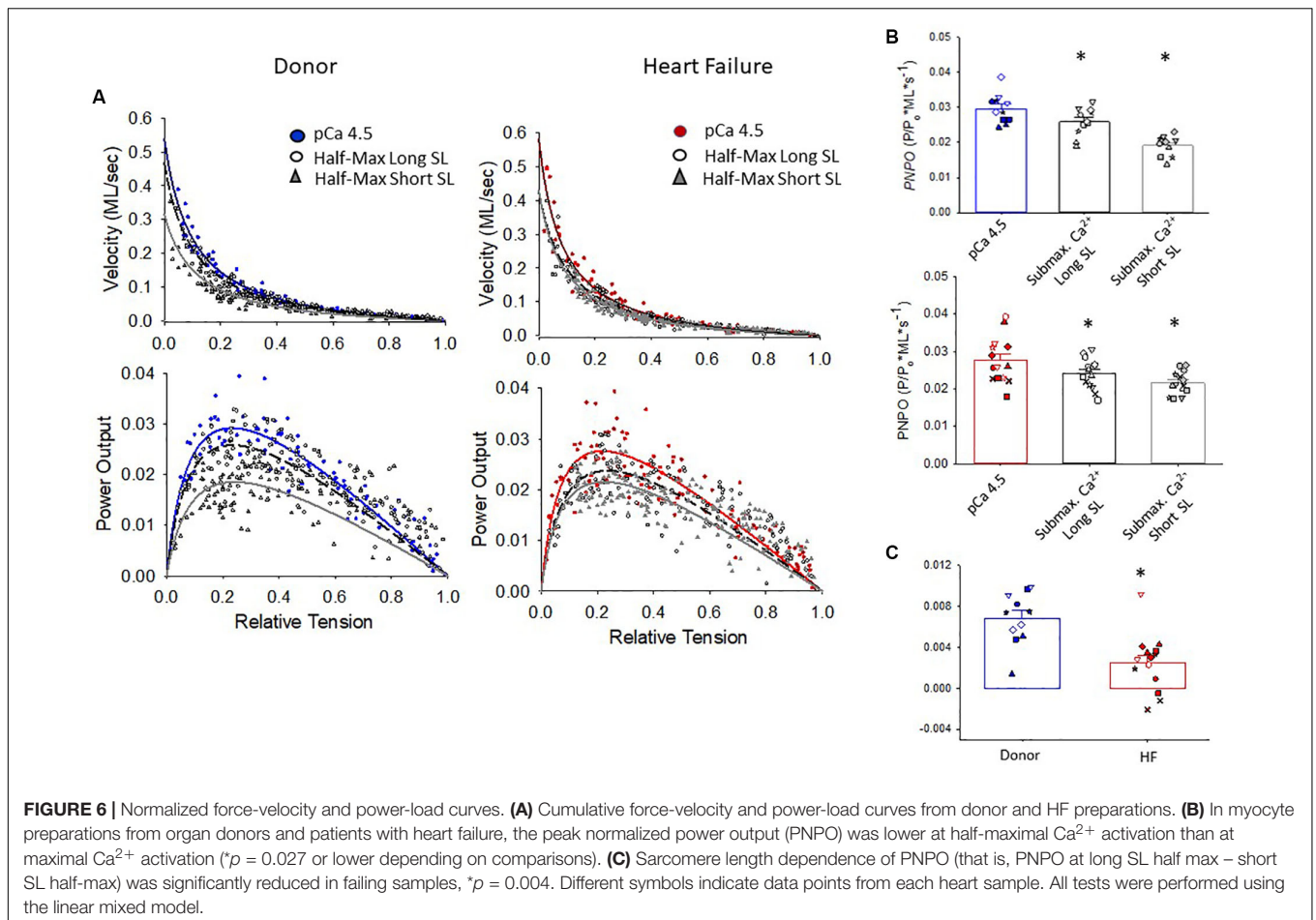
## Integration of Findings in Failing Human Myocardium

Heart failure is postulated to arise from a variety of changes in cardiac myocyte biology, including loss of cells, morphological

changes, transformed intracellular signaling, disrupted energetics, altered  $\text{Ca}^{2+}$  handling, and modifications of myofilament function. There is evidence of several contractility adaptations of intact myocardial preparations from failing human hearts, which include (i) decreased  $\beta$ -adrenergic responsiveness, (ii) depressed force-frequency relations, and (iii) slowed relaxation rates (Chung et al., 2018). From a myofilament standpoint, findings from failing permeabilized myocardial preparations include the (i) increased  $\text{Ca}^{2+}$  sensitivity of force, (ii) depressed length dependence of the  $\text{Ca}^{2+}$  sensitivity of force, and (iii) decreased PKA phosphorylation of myofilament proteins. One parameter that has yielded mixed results, especially between permeabilized multi-cellular and single-cell preparations, is maximal  $\text{Ca}^{2+}$ -activated tension. In this regard, a recent study showed depressed force and power in multi-cellular preparations obtained from the transmural region of the left ventricular free wall of human failing myocardium (Haynes et al., 2014). Our current study directly addressed the sub-cellular mechanistic underpinnings of this finding by measuring force and power in single permeabilized cardiac myocytes obtained from the same region of the left ventricles of donor and failing myocardia. Our finding that force and power in single cells does not depend on the heart failure status implies that the changes in multi-cellular myocardial preparations arise, at least in part, from tissue remodeling, perhaps due to the loss of myofilaments and consequent augmentation of myocardial fibrosis (Haynes et al., 2014).

## Study Limitations

There are several limitations with human cardiac myocyte contractile property studies. First, there is the caveat of categorizing non-failing, donor myocardium as normal because of the possibility of high blood levels of catecholamines and inotropic support at the time of procurement. Second, the diversity of factors that contribute to non-ischemic disease likely augments experimental variability. Third, any assessment of cardiac myocyte size is precluded because ventricular biopsies are mechanically disrupted, which yields highly variable sized fragments. Fourth, permeabilized cardiac myocyte contractile property studies have an inherent bias due to the selection of rod-shaped cardiac myocyte-sized preparations. The selection of myocyte preparations (to only those that can withstand measurements) may exclude populations with, for instance, diminished maximum tension-generating capacity. The preparation selection process increases the possibility of a false-negative result about tension generation capacity. Fifth, the labor-intensive nature of single cardiac myocyte contractile property measurements limits the sample size, which in combination with regional variability (Kuro-o et al., 1986; Cazorla et al., 2000), disease etiology, and varied treatments also increases the likelihood of false-negative results. Sixth, the small size of single cardiac myocyte preparations (tens of nanograms) tests the limits of conventional techniques to assess myofilament protein isoforms and post-translational modifications in preparations that had their mechanics measured (Herron et al., 2001; Herron and McDonald, 2002; Korte et al., 2005; Hanft et al., 2013).



## Next Steps

This study provides a comprehensive assessment of contractile properties of human single permeabilized cardiac myocytes from donor and patients who have heart failure. The study implicates myocardial tissue remodeling to explain, at least in part, previous reports of depressed force and mechanics in human multi-cellular myocardial preparations. Additionally, since the sarcomere length dependence of power was diminished in myofilaments from failing hearts, it is likely that that altered length dependence of myofilament power contributes to the depressed Frank-Starling relationship in failing human hearts. Future exploration of unique molecular mechanisms will necessitate next-generation, unbiased, cellular functional proteomic approaches on preparations that had their mechanics measured. Additional work is needed to address other myofilament properties, including dynamic response to calcium transients, myofilament efficiency, thin and thick filament dynamics, and relaxation kinetics, and how these are affected during the progression to heart failure. Future investigations will also require systematic delineation of how confounders such as genetics, disease etiology, environment, age, sex, co-morbidities, and medications affect myofilament function studies. Both the expansion of dynamic myofilament studies and critical evaluation of individual patient scenarios are necessary for

future, best-practice precision medicine to treat the underlying molecular mechanisms that cause human hearts to fail.

## DATA AVAILABILITY STATEMENT

The datasets generated for this study are available on request to the corresponding author.

## ETHICS STATEMENT

All procedures were approved by the University of Kentucky Institutional Review Board and written informed consent was obtained from each patient who had heart failure and from a legally authorized representative of each organ donor, subjects gave informed consent.

## AUTHOR CONTRIBUTIONS

KM, LH, and JR performed human single cardiac myocyte preparation experiments. MG and KC procured human tissue. KM, LH, JR, MG, and KC contributed to data analysis and manuscript preparation.

## FUNDING

This work was supported by (i) the National Institutes of Health (NIH) HL57852 and a University of Missouri, School of Medicine Bridge Grant to KM; (ii) NIH TR033173, HL133359, and HL146676 to KC; and (iii) SEC Visiting Faculty Grant Program to KM and KC.

## ACKNOWLEDGMENTS

The content is solely the responsibility of the authors and does not necessarily represent the official views of the National Institutes of Health.

## REFERENCES

- Adhikari, B. B., Regnier, M., Rivera, A. J., Kreuziger, K. L., and Martyn, D. A. (2004). Cardiac length dependence of force and force redevelopment kinetics with altered cross-bridge cycling. *Biophys. J.* 87, 1784–1794. doi: 10.1529/biophysj.103.039131
- Ait Mou, Y., Hsu, K., Farman, G. P., Kumar, M., Greaser, M. L., Irving, T. C., et al. (2016). Titin strain contributes to the Frank-Starling law of the heart by structural rearrangements of both thin- and thick-filament proteins. *Proc. Natl. Acad. Sci. U.S.A.* 113, 2306–2311. doi: 10.1073/pnas.1516732113
- Belin, R. J., Sumanda, M. P., Kobayashi, T., Walker, L. A., Rundell, V. L., Urboniene, D., et al. (2006). Left ventricular myofilament dysfunction in rat experimental hypertrophy and congestive heart failure. *Am. J. Physiol. Heart Circ. Physiol.* 291, H2344–H2353. doi: 10.1152/ajpheart.00541.2006
- Benjamin, E. J., Virani, S. S., Callaway, C. W., Chamberlain, A. M., Chang, A. R., Cheng, S., et al. (2018). Heart disease and stroke statistics–2018 update: a report from the American Heart Association. *Circulation* 137, e67–e492. doi: 10.1161/CIR.0000000000000573
- Braunwald, E., and Ross, J. (1964). Applicability of Starling's law of the heart to man. *Circ. Res.* 2, 169–181.
- Cazorla, O., Le Guennec, J.-Y., and White, E. (2000). Length-tension relationships of subepicardial and sub-endocardial single ventricular myocytes from rat and ferret hearts. *J. Mol. Cell. Cardiol.* 32, 735–744. doi: 10.1006/jmcc.2000.1115
- Cazorla, O., Wu, Y., Irving, T. C., and Granzier, H. (2001). Titin-based modulation of calcium sensitivity of active tension in mouse skinned cardiac myocytes. *Circ. Res.* 88, 1028–1035. doi: 10.1161/hh1001.090876
- Chung, J. H., Martin, B. L., Canan, B. D., Elnakish, M. T., Milani-Nejad, N., Saad, N. S., et al. (2018). Etiology-dependent impairment of relaxation kinetics in right ventricular end-stage failing human myocardium. *J. Mol. Cell. Cardiol.* 121, 81–93. doi: 10.1016/j.yjmcc.2018.07.005
- Copeland, O., Sadayappan, S., Messer, A. E., Steinen, G. J., van der Velden, J., and Marston, S. B. (2010). Analysis of cardiac myosin binding protein-C phosphorylation in human heart muscle. *J. Mol. Cell. Cardiol.* 49, 1003–1011. doi: 10.1016/j.yjmcc.2010.09.007
- de Waard, M. C., van der Velden, J., Bito, V., Ozdemir, S., Biesmans, L., Boontje, N. M., et al. (2007). Early exercise training normalizes myofilament function and attenuates left ventricular pump dysfunction in mice with a large myocardial infarction. *Circ. Res.* 100, 1079–1088. doi: 10.1161/01.RES.0000262655.16373.37
- Edes, I. F., Czuriga, D., Csanyi, G., Chlopicki, S., Recchia, F. A., Borbely, A., et al. (2007). The rate of tension redevelopment is not modulated by sarcomere length in permeabilized human, murine and porcine cardiomyocytes. *Am. J. Physiol.* 293, R20–R29. doi: 10.1152/ajpregu.00537.2006
- Edes, I. F., Toth, A., Csanyi, G., Lomnicka, M., Chlopicki, S., Edes, I., et al. (2008). Late-stage alterations in myofibrillar contractile function in a transgenic mouse model of dilated cardiomyopathy (Tgalphaq\*44). *J. Mol. Cell. Cardiol.* 45, 363–372. doi: 10.1016/j.yjmcc.2008.07.001

## SUPPLEMENTARY MATERIAL

The Supplementary Material for this article can be found online at: <https://www.frontiersin.org/articles/10.3389/fphys.2020.00468/full#supplementary-material>

**FIGURE S1** | Maximal Ca<sup>2+</sup> activated tension- Effects of sex. Male,  $N = 8$  hearts,  $n = 15$  cardiac myocyte preparations. Female,  $N = 7$  hearts,  $n = 14$  cardiac myocyte preparations. Different symbols indicate data points from each heart sample. Linear mixed model,  $p = 0.549$ .

**FIGURE S2** | Rate of force development ( $k_{tr}$ ) during maximal Ca<sup>2+</sup> activation- Effects of sex. Male,  $N = 7$  hearts,  $n = 11$  cardiac myocyte preparations. Female,  $N = 7$  hearts,  $n = 12$  cardiac myocyte preparations. Different symbols indicate data points from each heart sample. Linear mixed model,  $p = 0.993$ .

- Fabiato, A., and Fabiato, F. (1975). Dependence of the contractile activation of skinned cardiac cells on the sarcomere length. *Nature* 256, 54–56. doi: 10.1038/256054a0
- Frank, O. (1895). Zur dynamik des herzmuskels. *Z. Biol.* 32, 370–447.
- Fuchs, F., and Martyn, D. A. (2005). Length-dependent Ca<sup>2+</sup> activation in cardiac muscle: some remaining questions. *J. Muscle Res. Cell Motil.* 26, 199–212. doi: 10.1007/s10974-005-9011-z
- Fukuda, N., Wu, Y., Farman, G., Irving, T. C., and Granzier, H. (2003). Titin isoform variance and length dependence of activation in skinned bovine cardiac muscle. *J. Physiol.* 553, 147–154. doi: 10.1113/jphysiol.2003.049759
- Green, E. M., Wakimoto, H., Anderson, R. L., Evanchik, M. J., Gorham, J. M., Harrison, B. C., et al. (2016). A small-molecule inhibitor of sarcomere contractility suppresses hypertrophic cardiomyopathy in mice. *Science* 351, 617–621. doi: 10.1126/science.aad3456
- Grimm, A. F., Lin, H.-L., and Grimm, B. R. (1980). Left ventricular free wall and intraventricular pressure-sarcomere length distributions. *Am. J. Physiol.* 239, H101–H107. doi: 10.1152/ajpheart.1980.239.1.H101
- Guccione, J. M., O'Dell, W. G., McCulloch, A. D., and Hunter, W. C. (1997). Anterior and posterior left ventricular sarcomere lengths behave similarly during ejection. *Am. J. Physiol.* 272, H469–H477. doi: 10.1152/ajpheart.1997.272.1.H469
- Hamdani, N., de Waard, M., Messer, A. E., Boontje, N. M., Kooij, V., van Dijk, S., et al. (2008). Myofilament dysfunction in cardiac disease from mice to men. *J. Muscle Res. Cell Motil.* 29, 189–201. doi: 10.1007/s10974-008-9160-y
- Hanft, L. M., Biesiadecki, B. J., and McDonald, K. S. (2013). Length dependence of striated muscle force generation is controlled by phosphorylation of cTnI at serines 23/24. *J. Physiol.* 591, 4535–4547. doi: 10.1113/jphysiol.2013.258400
- Hanft, L. M., Cornell, T. D., McDonald, C. A., Rovetto, M. J., Emter, C. A., and McDonald, K. S. (2016). Molecule specific effects of PKA-mediated phosphorylation on rat isolated heart and cardiac myofibrillar function. *Arch. Biochem. Biophys.* 601, 22–31. doi: 10.1016/j.abb.2016.01.019
- Hanft, L. M., Emter, C. A., and McDonald, K. S. (2017). Cardiac myofibrillar contractile properties during the progression from hypertension to decompensated heart failure. *Am. J. Physiol. Heart Circ. Physiol.* 313, H103–H113. doi: 10.1152/ajpheart.00069.2017
- Hanft, L. M., Fitzsimons, D. P., Hacker, T. A., Moss, R. L., and McDonald, K. S. (2019). The role of cardiac MyBP-C in regulating Frank-Starling relationships. *Biophys. J.* 116:166a.
- Hanft, L. M., and McDonald, K. S. (2009). Sarcomere length dependence of power output is increased after PKA treatment in rat cardiac myocytes. *Am. J. Physiol. Heart Circ. Physiol.* 296, H1524–H1531. doi: 10.1152/ajpheart.00864.2008
- Hanft, L. M., and McDonald, K. S. (2010). Length dependence of force generation exhibit similarities between rat cardiac myocytes and skeletal muscle fibres. *J. Physiol.* 588, 2891–2903. doi: 10.1113/jphysiol.2010.190504
- Haynes, P., Nava, K. E., Lawson, B. A., Chung, C. S., Mitov, M. I., Campbell, S. G., et al. (2014). Transmural heterogeneity of cellular level power output is reduced in human heart failure. *J. Mol. Cell. Cardiol.* 72, 1–8. doi: 10.1016/j.yjmcc.2014.02.008



- Herron, T. J., Korte, F. S., and McDonald, K. S. (2001). Loaded shortening and power output in cardiac myocytes are dependent on myosin heavy chain isoform expression. *Am. J. Physiol. Heart Circ. Physiol.* 281, H1217–H1222. doi: 10.1152/ajpheart.2001.281.3.H1217
- Herron, T. J., and McDonald, K. S. (2002). Small amounts of alpha-myosin heavy chain isoform expression significantly increase power output of rat cardiac myocyte fragments. *Circ. Res.* 90, 1150–1152. doi: 10.1161/01.res.0000022879.57270.11
- Hill, A. V. (1938). The heat of shortening and the dynamic constants of muscle. *Proc. R. Soc. Lond. Ser. B* 126, 136–195. doi: 10.1152/advan.00072.2005
- Hinken, A. C., and McDonald, K. S. (2004). Inorganic phosphate speeds loaded shortening in rat skinned cardiac myocytes. *Am. J. Physiol. Cell Physiol.* 287, C500–C507. doi: 10.1152/ajpcell.00049.2004
- Holubarsch, C., Ruf, T., Goldstein, D. J., Ashton, R. C., Nickl, W., Pieske, B., et al. (1996). Existence of the Frank-Starling mechanism in the failing human heart: investigations on the organ, tissue, and sarcomere levels. *Circulation* 94, 683–689. doi: 10.1161/01.cir.94.4.683
- Kooij, V., Saes, M., Jaquet, K., Zaremba, R., Foster, D. B., Murphy, A. M., et al. (2010). Effect of troponin I ser23/24 phosphorylation on Ca<sup>2+</sup>-sensitivity in human myocardium depends on the phosphorylation background. *J. Mol. Cell. Cardiol.* 48, 954–963. doi: 10.1016/j.yjmcc.2010.01.002
- Korte, F. S., Herron, T. J., Rovetto, M. J., and McDonald, K. S. (2005). Power output is linearly related to MyHC content in rat skinned myocytes and isolated working hearts. *Am. J. Physiol. Heart Circ. Physiol.* 289, H801–H812. doi: 10.1152/ajpheart.01227.2004
- Korte, F. S., and McDonald, K. S. (2007). Sarcomere length dependence of rat skinned cardiac myocyte mechanical properties: dependence on myosin heavy chain. *J. Physiol.* 581, 725–739. doi: 10.1113/jphysiol.2007.128199
- Kuro-o, M., Tsuchimochi, H., Ueda, S., Takaku, F., and Yazaki, Y. (1986). Distribution of cardiac myosin isozymes in human conduction system. Immunohistochemical study using monoclonal antibodies. *J. Clin. Invest.* 77, 340–347. doi: 10.1172/JCI112310
- McDonald, K. S. (2000). Ca<sup>2+</sup> dependence of loaded shortening in rat skinned cardiac myocytes and skeletal muscle fibers. *J. Physiol.* 525, 169–181. doi: 10.1111/j.1469-7793.2000.00169.x
- McDonald, K. S., Hanft, L. M., Domeier, T. L., and Emter, C. A. (2012). Length and PKA dependence of force generation and loaded shortening in porcine cardiac myocytes. *Biochem. Res. Int.* 5:371415. doi: 10.1155/2012/371415
- McDonald, K. S., and Moss, R. L. (1995). Osmotic compression of single cardiac myocytes reverses the reduction in Ca<sup>2+</sup> sensitivity of tension observed at short sarcomere length. *Circ. Res.* 77, 199–205. doi: 10.1161/01.res.77.1.199
- Messer, A. E., Jacques, A. M., and Marston, S. B. (2007). Troponin phosphorylation and regulatory function in human heart muscle: dephosphorylation of Ser 23/24 on troponin I could account for the contractile defect in end-stage heart failure. *J. Mol. Cell. Cardiol.* 42, 247–259. doi: 10.1016/j.yjmcc.2006.08.017
- Patterson, S., and Starling, E. H. (1914). On the mechanical factors which determine the output of the ventricles. *J. Physiol.* 48, 357–379. doi: 10.1113/jphysiol.1914.sp001669
- Pollack, G. H., and Huntsman, L. L. (1974). Sarcomere length-active force relations in living mammalian cardiac muscle. *Am. J. Physiol.* 227, 383–389. doi: 10.1152/ajplegacy.1974.227.2.383
- Ross, J., and Braunwald, E. (1964). Studies on Starling's law of the heart: the effect of impeding venous return on performance of the normal and failing human left ventricle. *Circulation* 30, 719–727. doi: 10.1161/01.cir.30.5.719
- Schwinger, R. H., Bohm, M., Koch, A., Schmidt, U., Morano, I., Eissner, H. J., et al. (1994). The failing human heart is unable to use the Frank-Starling mechanism. *Circ. Res.* 74, 959–969. doi: 10.1161/01.res.74.5.959
- Sequiera, V., Wijnker, P. J., Nijenkamp, L. L., Kuster, D. W., Najafi, A., Witjas-Paalberends, R., et al. (2013). Perturbed length-dependent activation in human hypertrophic cardiomyopathy with missense sarcomeric gene mutations. *Circ. Res.* [Epub ahead of print]. doi: 10.1161/CIRCRESAHA.111.3.00436
- Stathopoulou, K., Wittig, I., Heidler, J., Piasecki, A., Richter, F., Diering, S., et al. (2016). S-glutathiolation impairs phosphoregulation and function of cardiac myosin-binding protein C in human heart failure. *FASEB J.* 30, 1849–1864. doi: 10.1096/fj.201500048
- Stelzer, J. E., and Moss, R. L. (2006). Contributions of stretch activation to length-dependent contraction in murine Myocardium. *J. Gen. Physiol.* 128, 461–471. doi: 10.1085/jgp.200609634
- Swenson, A. M., Tang, W., Blair, C. A., Fetrow, C. M., Unrath, W. C., Previs, M. J., et al. (2017). Omecamtiv mecarbil enhances the duty ratio of human beta-cardiac myosin resulting in increased calcium sensitivity and slowed force development in cardiac muscle. *J. Biol. Chem.* 292, 3768–3778. doi: 10.1074/jbc.M116.748780
- van der Velden, J., de Jong, J. W., Owen, V. J., Burton, P. B. J., and Stienen, G. J. M. (2000). Effect of protein kinase A on calcium sensitivity of force and its sarcomere length dependence in human cardiomyocytes. *Cardiovasc. Res.* 46, 487–495. doi: 10.1016/s0008-6363(00)00050-x
- van Der Velden, J., Klein, L. J., Zaremba, R., Boontje, N. M., Huybregts, M. A., Stoker, W., et al. (2001). Effects of calcium, inorganic phosphate, and pH on isometric force in single skinned cardiomyocytes from donor and failing human hearts. *Circulation* 104, 1140–1146. doi: 10.1161/hc3501.095485
- van der Velden, J., Narolska, N. A., Lamberts, R. R., Boontje, N. M., Borbely, A., Zaremba, R., et al. (2006). Functional effects of protein kinase C-mediated myofilament phosphorylation in human myocardium. *Cardiovasc. Res.* 69, 876–887. doi: 10.1016/j.cardiores.2005.11.021
- van der Velden, J., Papp, Z., Zaremba, R., Boontje, N. M., de Jong, J. W., Owen, V. J., et al. (2003). Increased calcium sensitivity of the contractile apparatus in end-stage human heart failure results from altered phosphorylation of contractile proteins. *Cardiovasc. Res.* 57, 37–47. doi: 10.1016/s0008-6363(02)00606-5
- Wijnker, P. J., Murphy, A. M., Stienen, G. J., and van der Velden, J. (2014). Troponin I phosphorylation in human myocardium in health and disease. *Netherlands Heart J.* 22, 463–469. doi: 10.1007/s12471-014-0590-4
- Wijnker, P. J. M., Foster, D. B., Tsao, A. L., Frazier, A. H., dos Remedios, C. G., Murphy, A. M., et al. (2013). Impact of site-specific phosphorylation of protein kinase A sites Ser23 and Ser24 of cardiac troponin I in human cardiomyocytes. *Am. J. Physiol.* 304, H260–H268. doi: 10.1152/ajpheart.00498.2012
- Wolff, M. R., Buck, S. H., Stoker, S. W., Greaser, M. L., and Mentzer, R. M. (1996). Myofibrillar calcium sensitivities of isometric tension is increased in human dilated cardiomyopathies. *J. Clin. Invest.* 98, 167–176.

**Conflict of Interest:** The authors declare that the research was conducted in the absence of any commercial or financial relationships that could be construed as a potential conflict of interest.

Copyright © 2020 McDonald, Hanft, Robinett, Guglin and Campbell. This is an open-access article distributed under the terms of the Creative Commons Attribution License (CC BY). The use, distribution or reproduction in other forums is permitted, provided the original author(s) and the copyright owner(s) are credited and that the original publication in this journal is cited, in accordance with accepted academic practice. No use, distribution or reproduction is permitted which does not comply with these terms.