



RESEARCH ARTICLE

REVISED Modified OXIS classification for primary canines**[version 2; peer review: 2 approved]**J Aarthi ^{1*}, MS Muthu ^{2,3*}, M Kirthiga ², Vignesh Kailasam⁴¹Department of Pedodontics and Preventive dentistry, Sree Balaji Dental College and Hospital, Pallikaranai, Chennai, Tamil Nadu, 600100, India²Centre for Early Childhood Caries Research, Department of Pediatric and Preventive Dentistry, Sri Ramachandra Faculty of Dental Sciences, Sri Ramachandra Institute of Higher Education and Research, Porur, Chennai, Tamil Nadu, 600116, India³Centre of Medical and Bio-Allied Health Sciences, Ajman University, Ajman, 20550, United Arab Emirates⁴Department of Orthodontics and Dentofacial Orthopedics, Sri Ramachandra Faculty of Dental Sciences, Sri Ramachandra Institute of Higher Education and Research, Chennai, Tamil Nadu, 600116, India

* Equal contributors

V2 First published: 06 Apr 2022, 7:130
<https://doi.org/10.12688/wellcomeopenres.17775.1>
 Latest published: 10 Jun 2022, 7:130
<https://doi.org/10.12688/wellcomeopenres.17775.2>

Abstract

Background: A new classification called OXIS was proposed for categorising the interproximal contacts of primary molars, and its prevalence was established. The aim of this study was to establish the variations in interproximal contacts of primary canines and thereby modify the OXIS classification of primary molars to primary canines. Additionally, we aimed to estimate the applicability of modifications to primary anterior teeth.

Methods: A retrospective study was conducted with sectional die models obtained from a previous study of 1,090 caries-free children. Two calibrated examiners evaluated a total of 4,674 contacts from the occlusal aspect. The contacts were scored according to the former OXIS classification, with two modifications incorporated to encompass the morphological differences and rotations of primary canines and other primary anterior teeth.

Results: The most prevalent contact was O (62.1%), followed by X (19.6%), I (12.6%), S type I (4.1%), and S type II (1.6%). Inter-arch comparison by means of the Chi-square test revealed significant differences for all types of contacts ($P < .001$).

Conclusions: The interproximal contacts of canines were categorised as O, X, I, S I, and S II. The OXIS classification of primary molars was modified to benefit the variations in primary canines. This study showed the presence of different types of contacts in primary canines. Identification of these contacts and their complexity has warranted a need for this to be studied as an inherent risk factor for caries risk assessment.

Open Peer Review**Approval Status**

	1	2
version 2 (revision) 10 Jun 2022		 view
version 1 06 Apr 2022	 view	 view

1. **Indira Mysore Devraj** , JSS Academy of Higher Education and Research, Mysuru, India

2. **Nicola P. T. Innes** , Cardiff University, Cardiff, UK

Any reports and responses or comments on the article can be found at the end of the article.

Keywords

Deciduous teeth, Interproximal contacts, Primary canines, Retrospective, OXIS



This article is included in the [Wellcome Trust/DBT India Alliance](#) gateway.

Corresponding author: MS Muthu (muthumurugan@gmail.com)

Author roles: **Aarthi J:** Conceptualization, Data Curation, Formal Analysis, Investigation, Methodology, Project Administration, Resources, Validation, Visualization, Writing – Original Draft Preparation, Writing – Review & Editing; **Muthu M:** Conceptualization, Data Curation, Formal Analysis, Investigation, Methodology, Project Administration, Resources, Supervision, Validation, Visualization, Writing – Review & Editing; **Kirthiga M:** Data Curation, Formal Analysis, Funding Acquisition, Investigation, Methodology, Resources, Validation, Visualization, Writing – Review & Editing; **Kailasam V:** Formal Analysis, Methodology, Resources, Validation, Visualization, Writing – Review & Editing

Competing interests: No competing interests were disclosed.

Grant information: This work was supported by Wellcome through a Wellcome Trust/DBT India Alliance CPH Early Career Fellowship [IA/CPHE/17/1/503352] to MK.

The funders had no role in study design, data collection and analysis, decision to publish, or preparation of the manuscript.

Copyright: © 2022 Aarthi J *et al.* This is an open access article distributed under the terms of the [Creative Commons Attribution License](#), which permits unrestricted use, distribution, and reproduction in any medium, provided the original work is properly cited.

How to cite this article: Aarthi J, Muthu M, Kirthiga M and Kailasam V. **Modified OXIS classification for primary canines [version 2; peer review: 2 approved]** Wellcome Open Research 2022, 7:130 <https://doi.org/10.12688/wellcomeopenres.17775.2>

First published: 06 Apr 2022, 7:130 <https://doi.org/10.12688/wellcomeopenres.17775.1>

REVISED Amendments from Version 1

We thank the reviewers for their comments and suggestions. Taking these into account, in this version (2), we have made the following amendments

A sentence in the clinical implications section has been modified based on the reviewer's comment.

A text has been added to the clinical implications section to clear the ambiguity mentioned by the reviewer.

We have removed the line "The O contacts were scored as zero, X as one, I as two, S Type I as three, and S Type II as four" from the statistical analysis section, as per the reviewer's comment

The reasons for assignment of scores has been added to the Methodology section, under "Evaluation of Canine Contacts".

Text has been added to the methodology section, under "Calibration and Training of Examiners" elaborating on the calibration process.

A brief note on calibration of other clinicians has been added to the "Discussion" section.

We agree to the reviewer's comment on the total number of contacts as 8,720 from the 4,360 sectional die models. We have incorporated a flow chart indicating the reasons for inclusion and exclusion of contacts (Figure 3).

We agree to the reviewer's comments on Table 2 and we will remove the same, the information of which is already provided in Table 3. Also we agree to change the word "prevalence" to "overall" in Table 3. The Table 3 will now be numbered as Table 2.

Any further responses from the reviewers can be found at the end of the article

Introduction

Interdental spaces and primate spaces are common features of the primary dentition. These spaces play a significant role during the transition to the permanent dentition¹. Primate spaces are those that are present mesial to maxillary canines and distal to mandibular canines. Although the open type of primary dentition is the most common and most favourable, it is not uncommon to find children with the closed type of dentition². Previous studies have reported variations in the presence of interdental spacing and primate spaces in both the maxilla and the mandible³⁻⁵. Likewise, there have been variations in the presence of anterior segment spacing in different populations. It should be noted that most studies reported primate spaces as not being present in both arches of all children. Hence, it can be assumed that primary canines may or may not be in contact with the adjacent teeth, due to the presence or absence of primate spaces. Otuyumei *et al.*, reported closed or crowded anterior segments to be present in 24.4% and 26.3% in the maxilla and mandible, respectively, in Nigerian children. Also, 18.1% of them exhibited contact or crowded anterior segments in both arches⁶. Thus, these studies have summarised the anterior segment in primary dentition as having generalised spacing, being closed/crowded, and having only primate spaces, hinting at variations in contacts

of primary canines and other anterior teeth. Chronologically, primary canines are the last to exfoliate and are retained in the oral cavity for a longer period of time, and hence are exposed to various environmental influences. Most clinicians face the challenge of restoring primary canines that are affected with multi-surface tooth decay. The proximal surfaces of these teeth are affected along with their labial or lingual surfaces, creating complexity in the restoration of these teeth. Failure of class III restorations in primary canines has long been of concern to clinicians. A thorough understanding and assessment of contacts could answer the myriad questions about the patterns of caries in these teeth.

One study reported an interesting finding where the labial surfaces of mandibular canines had non-cavitated enamel lesions in children with an otherwise healthy dentition⁷. Similarly, another study reported the labial surface to be the most commonly affected in primary canines⁸. The aetiology behind such patterns is not clearly understood. One study, conducted in Bangalore, India, reported the prevalence and pattern of decay in primary anterior teeth in preschool children aged 3–6 years. Diverse patterns of tooth decay involving more than one surface (mesiobuccal, distobuccal, distolingual, or mesiolingual) were seen affecting the primary anterior teeth (canines) in this study⁹. Thus, it can be hypothesised that the position of a tooth in the arch and its contact with adjacent teeth could play a significant role in the occurrence of multi-surface tooth decay. Variations in the posterior contact areas between first and second primary molars have been reported and classified in recent studies^{10,11}. Further, a study conducted on the prevalence of the OXIS classification of interproximal contacts between first and second primary molars¹² provides perspective on the different types of contacts that could possibly exist between the other primary teeth as well.

There is limited literature on the caries prevalence and pattern of tooth decay of primary canines. It has been reported that crowding and the absence of interdental spacing could decrease the accessibility to proper oral hygiene measures, thereby increasing plaque accumulation and thus increasing the risk for caries¹³. Although the various etiologic factors of caries have been widely studied, the roles of tooth type, position, and spacing in the same have been less often reported¹⁴. Knowledge of the different types of contacts present in the primary dentition could aid in long term follow up and caries prevention, thereby improving the oral health of the child. Hence, there is a need to investigate the various contacts of primary canines that could provide further insight into which surfaces are more prone to be carious in these teeth. The variations in interproximal contact of primary anterior teeth, especially those of canines with lateral incisors and first primary molars, have not been reported. Although previous studies³⁻⁶ have reported variations in the anterior segment as a whole, to the best of our knowledge there are no reports on the interproximal contacts of primary canines. Thus, this study aimed to assess the variations in interproximal contacts of primary canines in 3- and 4-year-old caries-free children, and

thereby to modify OXIS and propose a classification for the primary canines and other primary anterior teeth.

Methods

Ethics approval

Ethics clearance for this study was obtained from the Institutional Ethics Board, Sri Ramachandra University, Chennai, India (REF: IEC-NI/16/AUG/55/54).

Study design and study samples

This retrospective study was conducted with the dental casts obtained from children aged between three and four years in Puducherry recruited between October 2018 – January 2019¹². The study was entitled “OXIS classification of interproximal contacts of primary molars and its prevalence in three- to four-year-olds”¹² and was funded by the Wellcome Trust, UK/DBT India Alliance. The children participating in that study were screened in their respective schools after informed consent (written) was obtained from their parents. Maxillary and mandibular impressions of caries-free children were obtained by means of sectional impression trays with silicone-rubber-based impression material. A die stone was used to pour the impressions and obtain the models.

In total, 4,360 sectional die models obtained from 1,090 caries-free children (two maxillary and two mandibular for each child) were analysed for interproximal contacts of primary canines. Among these, models with clearly visible contact on at least one side of the primary canine (mesial or distal) were included in the present study. Models with unrecorded or broken canines and those with developmental anomalies of teeth were excluded. Thus, 4,674 contacts were included in the study.

Calibration and training of the examiners

As a preliminary process, two paediatric dentists (A.J., K.M.) were substantially trained and graded by an expert (M.S.M.) to evaluate the variations in canine contacts over a period of two months. This training consisted of one hour of theoretical

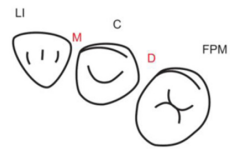
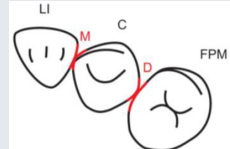
discussion to orient the examiners to the OXIS classification of primary molars¹¹. This was followed by another hour of PowerPoint presentation along with a Q & A session. Following this orientation, the modifications of S I and S II for the anterior teeth were explained in another PowerPoint presentation with a Q & A session lasting for an hour. The last one hour of hands-on training was conducted on the models by an expert (MSM) in order to acquaint the examiners to the method of scoring. The examiners individually evaluated and scored models of 20 patients (80 models). The inter-examiner reliability was calculated using Cohen kappa, the value of which was 0.80, which indicated a good degree of agreement.

Evaluation of canine contacts

The evaluation of canine contacts was performed by the aforementioned examiners. The models were viewed from the occlusal perspective by being placed on a flat surface. With the OXIS classification¹¹ retained, a few modifications were made to incorporate the variations in the contacts of the primary canines. The types of contacts of maxillary and mandibular canines with primary lateral incisors and first primary molars (i.e., mesial and distal contacts) were evaluated and classified (Table 1). For X and I types, the contact was measured buccolingually by means of the Williams probe.

- When there was no contact between the canine and the adjacent tooth (O), the contact was classified as Open (O) and was given a score of zero.
- When there was a contact point of ≤ 1 mm between the proximal surface of the canine (mesial/distal) and that of the adjacent tooth, measured buccolingually by means of the Williams probe, the contact was classified as X and was given a score of one.
- When there was a surface contact of > 1 mm between the proximal surface of the canine (mesial/distal) and that of the adjacent tooth, measured buccolingually by means of the Williams probe, the contact was classified as I and was given a score of two.

Table 1. Illustrative images and representative models of the types of contacts according to modified OXIS criteria.

Type of contact	Criteria	Pictorial representation	Score
Open (O)	The proximal surfaces of canine (mesial and distal) have no contact with the adjacent teeth		0
X Type	When there is a point contact of ≤ 1 mm between the proximal surface of canine (mesial/distal) and that of the adjacent tooth		1

Type of contact	Criteria	Pictorial representation	Score
I Type	When there is a surface contact of > 1 mm between the proximal surface of canine (mesial/distal) and of the adjacent tooth		2
S Type I	When canine is rotated and only one of its surfaces (either proximal surface or labial/lingual surface) is contacting the adjacent tooth		3
S Type II	When canine is rotated and has two of its surfaces - proximal surface (mesial/distal) and labial or lingual surface contacting the adjacent tooth		4

The interproximal contact of the primary canine with that of the primary lateral incisor and the first primary molar [mesial and distal] is shown.

Red dots indicate mesial/distal canine surfaces.

Green dots indicate labial/lingual canine surfaces.

LI - Lateral incisor, C - Canine, FPM - First primary molar, M - Mesial, D - Distal, L - Labial, P/L - Palatal/lingual

- When the canine was rotated and only one of its surfaces (either proximal or labial/lingual) was in contact with the adjacent tooth, the contact was classified as S Type I and was given a score of three.
- When the canine was rotated and had two surfaces — proximal (mesial/distal) and labial or lingual — in contact with the adjacent tooth, the contact was classified as S Type II

and was given a score of four. Representative images of all the variations in the canine contacts have been depicted with clinical images and their respective stone models (shown in [Figure 1](#) and [Figure 2](#)).

Assignment of scores zero to four was done for two reasons. Firstly, the hierarchy in numbering implies the increased risk for caries. The scores zero to four denote caries susceptibility

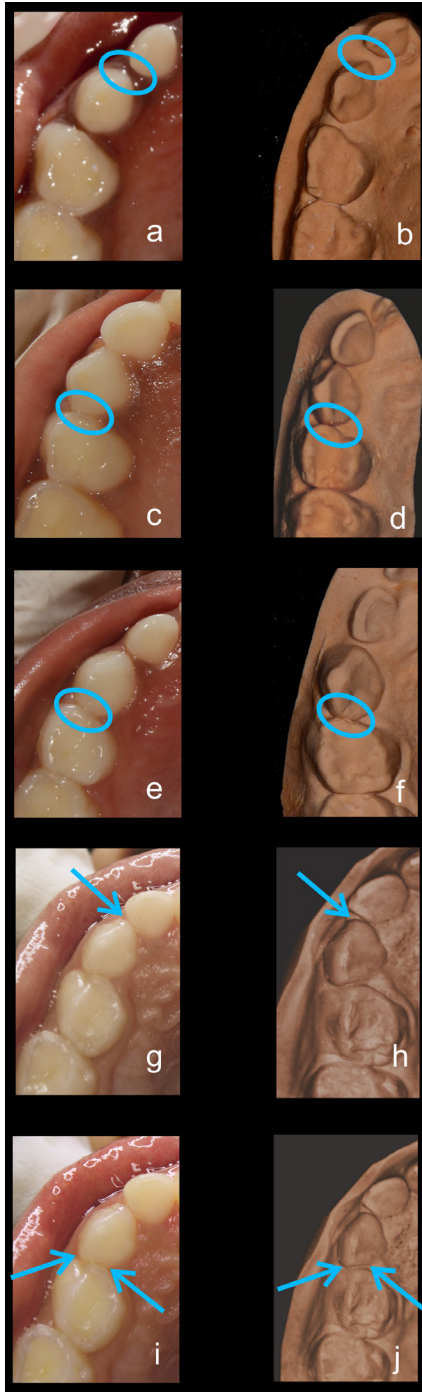


Figure 1. Representative clinical images and their respective stone models for each type of contact in maxillary primary canines. (a, b) Open (O) type. (c, d) X type. (e, f) I type. (g, h) S type I. (i, j) S type II.

in increasing order. An open contact with a score of zero is likely have decreased caries susceptibility, while a complex S type contact with a of score three or four could have an increased susceptibility to caries. The second reason for assignment of scores was to aid in entering the data into the statistical software.

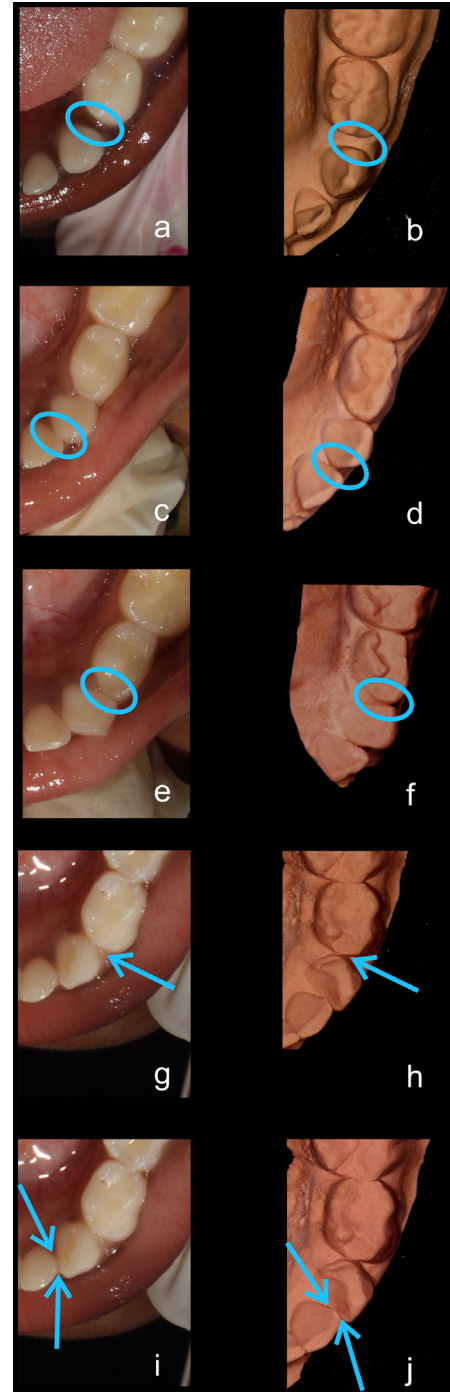


Figure 2. Representative clinical images and their respective stone models for each type of contact in mandibular primary canines. (a, b) Open (O) type. (c, d) X type. (e, f) I type. (g, h) S type I. (i, j) S type II.

Statistical analysis

Data extracted were tabulated and analysed by means of SPSS software (version 16) (SPSS, RRID:SCR_002865). Types of contacts and their prevalence were expressed in numbers and percentages. Inter-arch comparisons of rates of occurrence of contacts were performed by the Chi-square test.

Results

Sectional models from 1,090 patients (577 female patients, 513 male patients) were considered for this study. Each patient had four models (right and left, maxillary and mandibular), and each canine had two contacts (mesial and distal), thus creating 8,720 contacts. Of these, 4,674 contacts were considered eligible for scoring according to the inclusion criteria (Figure 3)

Prevalence of contacts

Among the 4,674 contacts that were scored, the O type was found in 62.1%, the X type in 19.6%, the I type in 12.6%, the S type I in 4.1%, and the S type II in 1.6% (Table 2)¹⁵. There was no statistically significant difference between sex and types of contact ($P = .199$).

Frequency of contacts in mesial/distal regions

In the mesial to canine region, the prevalence of the O contact type was 76.6%, followed by the X and I types, with 11.9% and 4.3%, respectively. S types I and II had prevalences of 3.5% and 3.6%, respectively, in the mesial canine contact. In the distal canine region, the prevalences of O, X, I, and S types I and II were 56%, 22.8%, 16.1%, 4.3%, and 0.8%, respectively. There was a statistically significant difference between the mesial and distal regions in the occurrence of contacts ($P < .001$) (Table 2).

Inter-arch comparisons

The prevalence of the O type contact in the maxilla and mandible was 34.23% and 27.83%, respectively ($P < .001$). The

prevalence of the X type contact was 9.17% in the maxilla and 10.38% in the mandible ($P = .0004$). The prevalence of the I type contact was 7.89% and 4.75% in the maxilla and mandible, respectively ($P < .001$). The prevalence of the S type I contact was 0.64% in the maxilla and 3.47% in the mandible ($P < .001$). The prevalence of the S type II contact was 0.13% and 1.49% in the maxilla and mandible, respectively ($P < .001$) (Table 2).

Discussion

The series of studies on OXIS contacts^{10,11,14} and their reports on the relationship/vulnerability of various contacts to caries serve as an impetus for the study of canines and hence to the proposal of this classification. The present retrospective study evaluated variations in the interproximal contacts of primary canines and proposed a classification for the same. In view of the proposal of a classification that is simple yet comprehensive, and which allows for categorisation and differentiation, this study has extended the OXIS classification for primary canines that could be used for other primary anterior teeth as well.

The study on OXIS classification of primary molars¹² has provided a leading edge for the investigation of contacts among other primary teeth, and this study on the primary canines provides a scientific foundation for anterior teeth. The approximal morphology of the primary molars¹⁰ and the prevalence of OXIS contacts¹² and their caries risk for primary molars¹⁶ have been reported previously. However, to overcome the differences

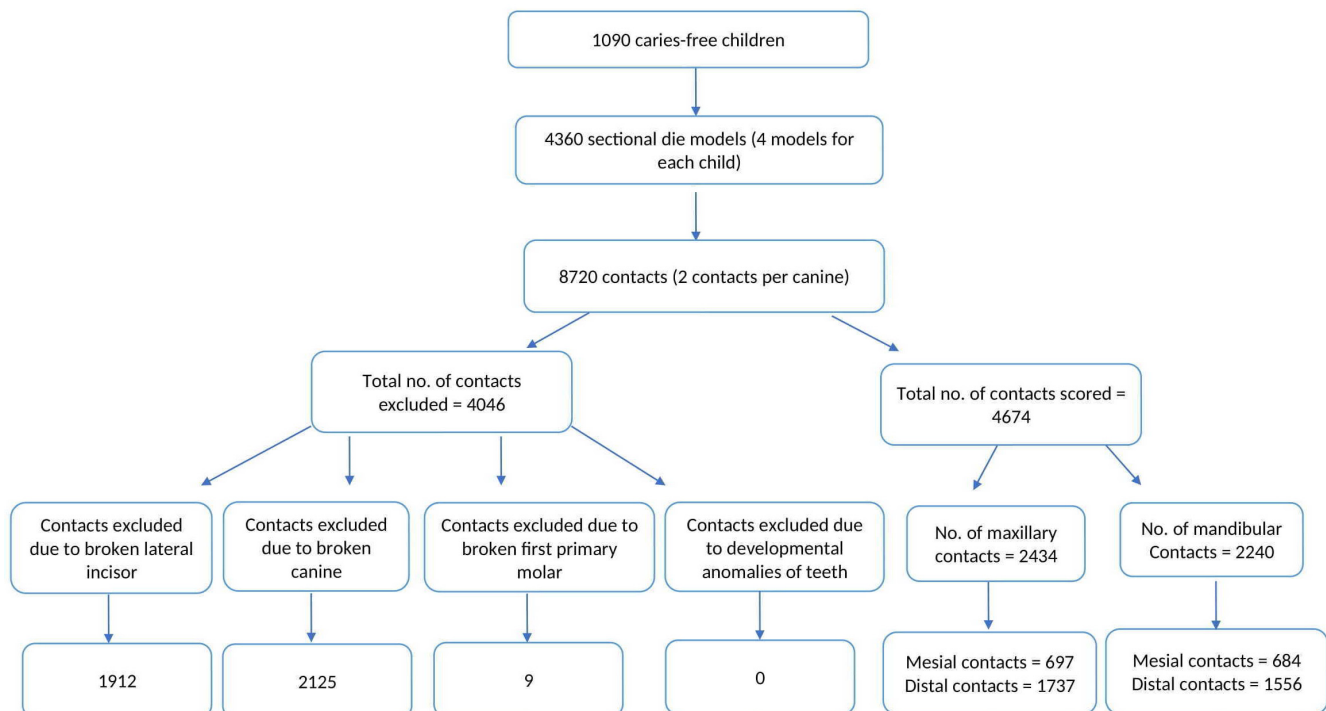


Figure 3. Flowchart showing Inclusion and Exclusion of Contacts.

Table 2. Inter-arch comparisons, maxilla vs mandible.

Type of contact	Maxilla N=2,434				Mandible N=2,240				Prevalence (Maxilla and mandible)		P-value*		
	Mesial to canine N=697		Distal to canine N=1,737		Mesial to canine N=684		Distal to canine N=1,556		Total	%			
	M	F	M	F	M	F	M	F	Total	%			
Open (O)	279	332	492	497	989	209	238	412	442	1,301	27.83	62.1	<0.001*
		611		989			447		854				
		(87.66%)		(56.94%)			(65.4%)		(55%)				
X Type	15	34	165	215	380	48	67	164	206	485	10.376	19.6	0.0004*
		49		380			115		370				
		(7.03%)		(21.88%)			(16.8%)		(23.8%)				
I Type	18	15	143	193	336	16	11	76	119	222	4.749	12.6	<0.001*
		33		336			27		195				
		(4.73%)		(19.34%)			(3.95%)		(12.5%)				
S Type I	0	2	16	12	28	20	27	55	60	162	3.465	4.1	<0.001*
		2		28			47		115				
		(0.29%)		(1.61%)			(6.88%)		(7.4%)				
S Type II	2	0	1	3	4	22	26	12	10	70	1.497	1.6	<0.001*
		2		4			48		22				
		(0.29%)		(0.23%)			(7.02%)		(1.4%)				

M - Male, F - Female.

*P < .05 = significant. There was a statistically significant difference in the rates of occurrence of contacts between the maxilla and the mandible. O type and I type contacts were significantly greater in the maxilla, whilst the others were significantly greater in the mandible.

*Mesial vs distal O contacts: $\chi^2 = 175.37, P < .001$. Mesial vs distal X type contacts: $\chi^2 = 73.39, P < .001$. Mesial vs distal I type contacts: $\chi^2 = 122.82, P < .001$. Mesial vs distal S type I contacts: $\chi^2 = 1.597, P = .206$. Mesial vs distal S type II contacts: $\chi^2 = 47.64, P < .001$.

between the primary anterior and posterior teeth and propose a universal classification, we have incorporated two modifications into the present study. This allows for judicious use of the modified OXIS classification on the primary anterior teeth. First, owing to the smaller buccolingual dimensions of primary anterior teeth, the cut-off point in differentiating between X and I types was set at 1 mm (≤ 1 mm and >1 mm) as opposed to 1.5 mm for posterior teeth. Second, the S type was subdivided into two categories (S type I and S type II), to identify and include the variations that could possibly occur due to the rotations of the tooth.

A new investigator (AJ) was involved in the calibration process who had to be oriented to the OXIS classification¹¹. However, the other investigator (KM) was already a part of the classification team and was familiar with OXIS. Further, illustrative images of the types of canine contacts (which are now available in the manuscript in Table 1) were not available at the time of calibration and hence had to be worked on from preliminary stages. The schematic images (Table 1) thus developed and the representative clinical and model images (Figure 1 and Figure 2), allow for easy understanding and use of the classification. Additionally, the OXIS team is in the process of developing an online calibration portal for the OXIS classification in line with ICDAS portal. The calibration process for OXIS classification of primary molars has already been integrated in this portal and expected to go live in early or mid-September 2022, which will facilitate faster calibration (45–60 minutes) of the clinicians. The Modified OXIS classification has also been planned to be added in Phase 2 of the development of this portal.

In the present study, among the mesial contacts studied, 37.9% were closed, with most being open (62.1%). In the maxilla, the O type contacts were predominantly seen in the mesial region (87.66%) as opposed to the distal region (56.94%), which is in agreement with the concept of primate spaces being present mesial to canines in the maxillary arch². However, in the mandibular arch, 65.4% of the O type contacts were seen mesial to canines, and 55% were present distal to canines, which is contrary to the concept of primate spaces being present distal to mandibular canines. O and I type contacts were seen predominantly in the maxilla, whilst the rest of the contacts were found predominantly in the mandible. These findings could not be compared due to the lack of similar studies in the literature.

When sex variations were considered, no statistically significant differences were found between sex and type of contact ($P = .199$). In inter-arch comparisons of rates of contact occurrence, statistically significant results were obtained ($P < .001$). Similarly, comparisons of mesial and distal contacts yielded significant results ($P < .001$). These findings could not be compared due to the absence of similar studies. Hence, further studies in different populations are needed.

To the authors' knowledge, this is the first study to classify the interproximal contacts of primary canines. Earlier studies^{4,5} classified the anterior segment collectively and categorised them as dentition with generalised spacing, closed dentition, crowded dentition, and those with only primate spaces. Describing

the anterior segment as a whole could possibly obscure the role and position of individual teeth in caries formation. Hence, in our study, these criteria were not used.

Strengths and limitations

The present study had both strengths and limitations. This is the first study to evaluate the interproximal contacts of primary canines and propose a classification for the same. A large sample size with 1,090 children and 4,674 contacts adds to the strength of the study. As the study was conducted on existing models from a previous epidemiological study in caries-free children, it can serve as future reference for the assessment of caries risk in these contacts. With regard to the limitations, as this study was conducted on previously existing segmental models that had been used to assess the contact areas of primary molars, not all models had teeth present anterior to first primary molars and canines. Hence, mesial-to-canine contacts could not be scored in most models, as they were unrecorded. This led to increased numbers of contacts being scored on the distal aspect compared with the mesial side of the canines. Another limitation is that the results cannot be generalised to children of other ethnicities.

The types of contacts present between and among teeth could play a significant role in plaque accumulation, thereby leading to caries formation. Also, the complexity of the contacts can act as an indicator for caries assessment of the teeth involved. A retrospective cohort study, conducted by Muthu *et al.*, evaluated the caries risk of the contacts of primary molars based on the OXIS classification. Those authors reported that the S and I type contacts had higher odds of developing caries compared with the X and O types¹⁶. In our study, the highest complexity was found in S type I and II contacts, which had rotated canines. These types of contacts had one or more canine surfaces having a broad contact with adjacent teeth. Such a complex position of a canine, with its proximal and labial or lingual surfaces being in contact with a lateral incisor or first primary molar, could inhibit cleansing activity. This in turn could lead to plaque accumulation in these areas. Hence, it is plausible to hypothesise that teeth with broader contacts (I type) and rotated teeth (S types I and II) could be at higher risk for caries formation.

Clinical implications

There are two important clinical implications of the types of interproximal contact present between and among the primary canines. First, identification of the types of contacts and their complexity indicates that this should be considered an inherent risk factor for caries risk assessment. Another significant implication is that, knowledge of the variations in contact can aid the clinician in restoring complex contacts to more favorable ones thus reducing plaque accumulation and susceptibility to caries.

Further, initial recording of the contacts could provide information on the number and type of surfaces at risk. Primary molars with multi-surface caries involvement often require a full coronal restoration, which could be applicable to primary canines as well. Assessing such contacts might drive the clinician to place a full coronal restoration in teeth with complex contacts in the early stages of decay. Hence, it would

be equitable to place full coronal restorations like strip crowns or zirconia crowns as opposed to class III or class IV restorations in such contacts.

Conclusions

This study was conducted on primary canines to evaluate the variations in contacts. However, this classification can be extended to classify other anterior teeth as well. Furthermore, the prevalence of OXIS contacts on other primary anterior teeth and in various populations needs to be studied. The role of these contacts in the risk of developing caries needs to be further established through longitudinal prospective and retrospective cohort studies. Long-term follow-up studies are necessary to evaluate the association of these contacts with the occurrence of caries.

Data availability

Underlying data

Open Science Framework: Modified OXIS Classification for Primary Canines. [10.17605/OSF.IO/MZDXB](https://doi.org/10.17605/OSF.IO/MZDXB)¹⁵.

Data are available under the terms of the [Creative Commons Zero “No rights reserved” data waiver](https://creativecommons.org/licenses/by/4.0/) (CC0 1.0 Public domain dedication).

Acknowledgments

The authors acknowledge Mrs. Gayathri Babu for her assistance in statistical analysis.

References

- Nakata M, Wei SHY: **Occlusal guidance in pediatric dentistry**. Tokyo; St. Louis: Ishiyaku EuroAmerica, 1988.
[Reference Source](#)
- Baume LJ: **Physiological tooth migration and its significance for the development of occlusion; the biogenesis of the successional dentition**. *J Dent Res*. 1950; **29**(3): 338–348.
[PubMed Abstract](#) | [Publisher Full Text](#)
- Sun KT, Li YF, Hsu JT, et al.: **Prevalence of primate and interdental spaces for primary dentition in 3- to 6-year-old children in Taiwan**. *J Formos Med Assoc*. 2018; **117**(7): 598–604.
[PubMed Abstract](#) | [Publisher Full Text](#)
- Ferreira EEM, Pastori EC, Ferreira RI, et al.: **Comparative assessment of anterior spacing in Japanese-Brazilian and white children in the primary dentition**. *J Orthod*. 2011; **16**: 155–162.
[Publisher Full Text](#)
- Han J, Hwang DH, Choi H, et al.: **Anterior spacing and crowding in the primary dentition in Hwaseong City: a preliminary study**. *J Korean Acad Pediatr Dent*. 2017; **44**: 397–402.
[Reference Source](#)
- Otuyemi OD, Sote EO, Isiekwe MC, et al.: **Occlusal relationships and spacing or crowding of teeth in the dentitions of 3-4-year-old Nigerian children**. *Int J Paediatr Dent*. 1997; **7**(3): 155–160.
[PubMed Abstract](#) | [Publisher Full Text](#)
- Henry JA, Muthu MS, Saikia A, et al.: **Prevalence and pattern of early childhood caries in a rural South Indian population evaluated by ICDAS with suggestions for enhancement of ICDAS software tool**. *Int J Paediatr Dent*. 2017; **27**(3): 191–200.
[PubMed Abstract](#) | [Publisher Full Text](#)
- Hennon DK, Stookey GK, Muhler JC: **Prevalence and distribution of dental caries in preschool children**. *J Am Dent Assoc*. 1969; **79**(6): 1405–1414.
[PubMed Abstract](#) | [Publisher Full Text](#)
- Srivastava VK: **Prevalence and pattern of caries in primary anterior teeth of preschool children: an observational study**. *J Indian Soc Pedod Prev Dent*. 2020; **38**(1): 26–33.
[PubMed Abstract](#) | [Publisher Full Text](#)
- Cortes A, Martignon S, Qvist V, et al.: **Approximal morphology as predictor of approximal caries in primary molar teeth**. *Clin Oral Investig*. 2018; **22**(2): 951–959.
[PubMed Abstract](#) | [Publisher Full Text](#)
- Kirthiga M, Muthu MS, Kayalvizhi G, et al.: **Proposed classification for interproximal contacts of primary molars using CBCT: a pilot study [version 2; peer review: 2 approved]**. *Wellcome Open Res*. 2018; **3**: 98.
[PubMed Abstract](#) | [Publisher Full Text](#) | [Free Full Text](#)
- Muthu MS, Kirthiga M, Kayalvizhi G, et al.: **OXIS classification of interproximal contacts of primary molars and its prevalence in three- to four-year-olds**. *Pediatr Dent*. 2020; **42**(3): 197–202.
[PubMed Abstract](#)
- Mathewson RJ, Primosch RE: **Hard tissue assessment**. In: *Fundamentals of Pediatric Dentistry*. Chicago, IL: Quintessence Publishing Co. Inc, 1995; 78–79.
- Allison PJ, Schwartz S: **Interproximal contact points and proximal caries in posterior primary teeth**. *Pediatr Dent*. 2003; **25**(4): 334–340.
[PubMed Abstract](#)
- Aarthi J: **Modified OXIS Classification for Primary Canines**. 2022.
<http://www.doi.org/10.17605/OSF.IO/MZDXB>
- Muthu MS, Kirthiga M, Lee JC, et al.: **OXIS contacts as a risk factor for approximal caries: a retrospective cohort study**. *Pediatr Dent*. 2021; **43**(4): 296–300.
[PubMed Abstract](#) | [Free Full Text](#)

Open Peer Review

Current Peer Review Status:  

Version 2

Reviewer Report 27 June 2022

<https://doi.org/10.21956/wellcomeopenres.19885.r50990>

© 2022 Innes N. This is an open access peer review report distributed under the terms of the [Creative Commons Attribution License](#), which permits unrestricted use, distribution, and reproduction in any medium, provided the original work is properly cited.



Nicola P. T. Innes 

School of Dentistry, Cardiff University, Cardiff, UK

I am very happy to change my recommendation to Approval and thank the authors for considering my suggestions so favourably

Competing Interests: No competing interests were disclosed.

Reviewer Expertise: Dentistry, clinical trials, paediatric dentistry, epidemiology, cariology, evidence-based dentistry, translational research, educational research, restorative dentistry, service evaluation.

I confirm that I have read this submission and believe that I have an appropriate level of expertise to confirm that it is of an acceptable scientific standard.

Version 1

Reviewer Report 05 May 2022

<https://doi.org/10.21956/wellcomeopenres.19674.r49781>

© 2022 Innes N. This is an open access peer review report distributed under the terms of the [Creative Commons Attribution License](#), which permits unrestricted use, distribution, and reproduction in any medium, provided the original work is properly cited.



Nicola P. T. Innes 

School of Dentistry, Cardiff University, Cardiff, UK

Many thanks for inviting me to review the manuscript "Modified OXIS classification for primary

canines". This is a very nice paper in a novel area. I have also read the authors' other piece of work by Muthu *et al.* 2020 ¹, from which this piece seems to follow.

The investigation and reporting of the work are of a high standard and the content is of interest to paediatric dentists especially but also cariologists, oral biologists, and anatomists. The photographs and diagrams are of high quality, clear and useful.

There are only a few areas where I have queries and feel there might be benefit from further clarification within the text.

1. I am unsure of the value of differentiating between whether one or two of the designated surfaces are in contact with the adjacent tooth. It would seem to be most important that the tooth is rotated and that the contact area is therefore broad. The rationale given by the authors is twofold: *First, identification of the types of contacts and their complexity indicates that this should be considered an inherent risk factor for caries risk assessment. Another significant implication is that knowledge of the types of contacts present can aid the clinician in re-establishing contacts in class III and class IV restorations, which are often challenging. For example, teeth with I type, and S type I or II contacts could require broader proximal restorations, with caries extending onto the labial or lingual side. This might require full coronal restoration of the affected canines.* The first point, using the presence of more extensive contact areas rather than contact points or open areas as an indicator for risk of dental caries; this would seem useful. However, it is difficult to see how the very granular coding (especially the S1 and S2 codes), where there are contacts, will add further information beyond the OXI classification and possibly the S as a code without the breakdown between S1 and S2. The second point, to allow re-establishment of contacts for restorations; if the tooth has been destroyed to such an extent that the contacts between the teeth are not known, then it seems unlikely that the OXIS will be much help unless someone has recorded them previously. In terms of managing the caries based on the contact profile, this would, of course, be driven by where the carious lesion is and extends to rather than by the contact points, so it is unclear how this information helps. It is clearer to see how this level of information might be useful for primary molars as it might drive a risk assessment with further detail that might push the clinician towards placing a full coronal restoration earlier than they might, but I was unclear if this is what the authors were saying. It would be helpful if the authors can elaborate further on why they feel the codes should be so detailed and granular.
2. The assignment of the scores – zero to three is written twice. Once in the bullet points on page 4 of 11 and again under statistical analysis heading on page 5 of 11.
3. The purpose of assigning the scores of zero to three was a little unclear. A hierarchy is implied by the numbering, but it is difficult to see a rationale for this and also there seems to be no further information in the paper that uses this scoring nor any evidence of summation of the scores. Was this only to allow the data to be entered into the statistical software? If this is so, it would be helpful to have this clarified in the text or perhaps both parts of the text that reference the scoring can be removed as this does not seem to be required by the reader.
4. Calibration and training of the examiners – it is stated that it took 4 hours to train the examiners but there is only a little information on what this consisted of. Also, it would be

helpful in the discussion to have mention of how the training of the examiners might relate to the time to train other clinicians as 4 hours seems quite a long time if someone was going to adopt the scoring system.

5. There is information that the 4,360 die models translate into 4,674 contacts. I realise that it probably should have been 8,720 (double this) and that the missing ones were related to the die models not covering the contact points required but it would be helpful to see what was included, what wasn't and why. So, perhaps a flow diagram, like a CONSORT chart showing where data couldn't be included and what was left at the end (possibly broken down into how many maxillary/ mandibular, mesial/distal of canines). This also relates to Table 3 results where the final breakdown is given.
6. Table 1. Either is not required as this is given in Table 3 columns (although it should say "prevalence" rather than "Overall". Or if Table 1 is being kept, it should give the detail of which are maxillary/ mandibular and mesial/distal for the prevalence data.

References

1. Muthu MS, Kirthiga M, Kayalvizhi G, Mathur VP: OXIS Classification of Interproximal Contacts of Primary Molars and Its Prevalence in Three- to Four-Year-Olds. *Pediatr Dent*. 2020; **42** (3): 197-202 [PubMed Abstract](#)

Is the work clearly and accurately presented and does it cite the current literature?

Yes

Is the study design appropriate and is the work technically sound?

Yes

Are sufficient details of methods and analysis provided to allow replication by others?

Partly

If applicable, is the statistical analysis and its interpretation appropriate?

Yes

Are all the source data underlying the results available to ensure full reproducibility?

Yes

Are the conclusions drawn adequately supported by the results?

Yes

Competing Interests: No competing interests were disclosed.

Reviewer Expertise: Dentistry, clinical trials, paediatric dentistry, epidemiology, cariology, evidence-based dentistry, translational research, educational research, restorative dentistry, service evaluation.

I confirm that I have read this submission and believe that I have an appropriate level of

expertise to confirm that it is of an acceptable scientific standard, however I have significant reservations, as outlined above.

Author Response 28 May 2022

M KIRTHIGA, Sri Ramachandra Faculty of Dental Sciences, Sri Ramachandra Institute of Higher Education and Research, Porur, Chennai, India

I am unsure of the value of differentiating between whether one or two of the designated surfaces are in contact with the adjacent tooth. It would seem to be most important that the tooth is rotated and that the contact area is therefore broad. The rationale given by the authors is twofold: First, identification of the types of contacts and their complexity indicates that this should be considered an inherent risk factor for caries risk assessment. Another significant implication is that knowledge of the types of contacts present can aid the clinician in re-establishing contacts in class III and class IV restorations, which are often challenging. For example, teeth with I type, and S type I or II contacts could require broader proximal restorations, with caries extending onto the labial or lingual side. This might require full coronal restoration of the affected canines. The first point, using the presence of more extensive contact areas rather than contact points or open areas as an indicator for risk of dental caries; this would seem useful. However, it is difficult to see how the very granular coding (especially the S1 and S2 codes), The second point, to allow re-establishment of contacts for restorations; if the tooth has been destroyed to such an extent that the contacts between the teeth are not known, then it seems unlikely that the OXIS will be much help unless someone has recorded them previously. In terms of managing the caries based on the contact profile, this would, of course, be driven by where the carious lesion is and extends to rather than by the contact points, so it is unclear how this information helps. It is clearer to see how this level of information might be useful for primary molars as it might drive a risk assessment with further detail that might push the clinician towards placing a full coronal restoration earlier than they might, but I was unclear if this is what the authors were saying. It would be helpful if the authors can elaborate further on why they feel the codes should be so detailed and granular.

The first point, using the presence of more extensive contact areas rather than contact points or open areas as an indicator for risk of dental caries; this would seem useful. However, it is difficult to see how the very granular coding (especially the S1 and S2 codes), where there are contacts, will add further information beyond the OXI classification and possibly the S as a code without the breakdown between S1 and S2.

Answer: In the original OXIS classification proposed¹¹, S refers to the curved contact between the primary molars. However, the classification was modified for anterior teeth owing to the differences in their morphology and their relationship with adjacent teeth. Hence the criteria for S contact in anterior teeth was attributed to the presence of rotated tooth with one or more surfaces in contact with the adjacent teeth. Therefore, a subclassification of S contact was drafted as S I (rotated tooth, with ONE surface in contact with adjacent tooth) and S II (rotated tooth with MORE THAN ONE surface in contact with the adjacent tooth) which could provide added information on the number of surfaces in contacts with the adjacent teeth for caries risk assessment. When more than ONE surface (of a single tooth) is involved in the inter proximal contact it might potentially create a more plaque retaining microenvironment compared to only

ONE surface involved in the inter proximal contact with the adjacent tooth. Thus, the caries susceptibility of S II could be higher due to the involvement of two or more surfaces when compared to S I with one surface involvement. Further, an S II contact might hypothetically need more effective preventive treatment measures as compared to S I and I type contact. Hence a subclassification of S type with an increased risk for caries could be beneficial. This could be inferred from the retrospective¹⁶ and prospective cohort studies (unpublished data) done on the OXIS contacts for primary molars which reported the S contacts to be at a high risk for caries followed by I type.

The second point, to allow re-establishment of contacts for restorations; if the tooth has been destroyed to such an extent that the contacts between the teeth are not known, then it seems unlikely that the OXIS will be much help unless someone has recorded them previously. In terms of managing the caries based on the contact profile, this would, of course, be driven by where the carious lesion is and extends to rather than by the contact points, so it is unclear how this information helps.

Answer: We agree to the reviewer's comment; in cases where there has been extensive destruction of tooth without contacts being recorded previously, it is unlikely that OXIS classification could be of much help. The OXIS classification has been developed with the primary intent of being incorporated into caries risk assessment protocol if sufficient evidence emerges from its research from different parts of the world.

The sentence has been modified from (Line no 278, Page no 14)

Another significant implication is that knowledge of the types of contacts present can aid the clinician in re-establishing contacts in class III and class IV restorations, which are often challenging.

To

Another significant implication is that, knowledge of the variations in contact can aid the clinician in restoring complex contacts to more favorable ones thus reducing plaque accumulation and susceptibility to caries.

1c - It is clearer to see how this level of information might be useful for primary molars as it might drive a risk assessment with further detail that might push the clinician towards placing a full coronal restoration earlier than they might, but I was unclear if this is what the authors were saying.

Answer: We agree to the reviewer's comment. We have added the following text in the clinical implications section to clear the ambiguity (Line no 281, Page no 14)

Further, initial recording of the contacts could provide information on the number and type of surfaces at risk. Primary molars with multi-surface caries involvement often require a full coronal restoration, which could be applicable to primary canines as well. Assessing such contacts might drive the clinician to place a full coronal restoration in teeth with complex contacts in the early stages of decay. Hence, it would be equitable to place full coronal restorations like strip crowns or zirconia crowns as opposed to class III or class IV restorations in such contacts.

2. The assignment of the scores – zero to three is written twice. Once in the bullet points on

page 4 of 11 and again under statistical analysis heading on page 5 of 11.

Answer: We agree to the reviewer's comment regarding the repetitiveness of the scoring. We have removed it from the statistical analysis section. (Line 142, Page no 10)

3. The purpose of assigning the scores of zero to three was a little unclear. A hierarchy is implied by the numbering, but it is difficult to see a rationale for this and also there seems to be no further information in the paper that uses this scoring nor any evidence of summation of the scores. Was this only to allow the data to be entered into the statistical software? If this is so, it would be helpful to have this clarified in the text or perhaps both parts of the text that reference the scoring can be removed as this does not seem to be required by the reader.

Answer: The purpose of assigning scores of zero to four was done for two reasons as mentioned below. The data of the complete scoring has been added to the open science framework and mentioned in the data availability statement. However, as per the reviewer's comments, in order to solve the ambiguity, we agree to add a note as mentioned below in the text part that refers to the scoring of contacts.

Text has been added to the Methodology section, under "Evaluation of Canine Contacts" as (Line no 135, Page no 10)

Assignment of scores zero to four was done for two reasons. Firstly, the hierarchy in numbering implies the increased risk for caries. The scores zero to four denote caries susceptibility in increasing order. An open contact with a score of zero is likely have decreased caries susceptibility, while a complex S type contact with a of score three or four could have an increased susceptibility to caries. The second reason for assignment of scores was to aid in entering the data into the statistical software.

4. Calibration and training of the examiners – it is stated that it took 4 hours to train the examiners but there is only a little information on what this consisted of. Also, it would be helpful in the discussion to have mention of how the training of the examiners might relate to the time to train other clinicians as 4 hours seems quite a long time if someone was going to adopt the scoring system.

Answer: We agree to the reviewer's comment and we have elaborated the calibration of examiners in two sections – Methodology and Discussion as below.

Under Methodology section, we have modified the line from (Line no 79, Page no 5)

This training consisted of theoretical discussions and PowerPoint presentations, with each session lasting an hour, conducted weekly for four weeks. Following this, a practical evaluation of contacts was performed on the study models.

To

This training consisted of one hour of theoretical discussion to orient the examiners to the OXIS classification of primary molars¹¹. This was followed by another hour of PowerPoint presentation along with a Q & A session. Following this orientation, the modifications of S1, S2 for the anterior teeth were explained in another PowerPoint presentation with a Q & A session lasting for an hour. The last one hour of hands-on training was conducted on the models by an expert (MSM) in order to acquaint the examiners to the method of scoring.

Also, it would be helpful in the discussion to have mention of how the training of the examiners might relate to the time to train other clinicians as 4 hours seems quite a long time if someone was going to adopt the scoring system.

Answer: We agree to the reviewer's comment. We have elaborated on it, in the "discussion" section as follows: (Line no 214, page no 12)

A new investigator (AJ) was involved in the calibration process who had to be oriented to the OXIS classification¹¹. However, the other investigator (KM) was already a part of the classification team and was familiar with OXIS. Further, illustrative images of the types of canine contacts (which are now available in the manuscript in Table 1) were not available at the time of calibration and hence had to be worked on from preliminary stages. The schematic images (Table 1) thus developed and the representative clinical and model images (Figure 2 and 3), allow for easy understanding and use of the classification. Additionally, the OXIS team is in the process of developing an online calibration portal for the OXIS classification in line with ICDAS portal. The calibration process for OXIS classification of primary molars has already been integrated in this portal and expected to go live in early or mid-September 2022, which will facilitate faster calibration (45-60 minutes) of the clinicians. The Modified OXIS classification has also been planned to be added in Phase 2 of the development of this portal.

5. There is information that the 4,360 die models translate into 4,674 contacts. I realise that it probably should have been 8,720 (double this) and that the missing ones were related to the die models not covering the contact points required but it would be helpful to see what was included, what wasn't and why. So, perhaps a flow diagram, like a CONSORT chart showing where data couldn't be included and what was left at the end (possibly broken down into how many maxillary/ mandibular, mesial/distal of canines). This also relates to Table 3 results where the final breakdown is given.

Answer: We thank the reviewer for identifying the typographical error on the total number of contacts as 8720, as opposed to 8770 mentioned in the results section and we have corrected the same. The number of excluded contacts and the reason for their exclusion has been mentioned in the flow chart (Figure 3)

The line has been modified from (Line 148, Page no 10)

Each patient had four models (right and left, maxillary and mandibular), and each canine had two contacts (mesial and distal), thus creating 8,770 contacts. Of these, 4,674 contacts were considered eligible for scoring according to the inclusion criteria.

To

Each patient had four models (right and left, maxillary and mandibular), and each canine had two contacts (mesial and distal), thus creating 8,720 contacts. Of these, 4,674 contacts were considered eligible for scoring according to the inclusion criteria (Figure 3)

6. Table 1. Either is not required as this is given in Table 3 columns (although it should say "prevalence" rather than "Overall". Or if Table 1 is being kept, it should give the detail of which are maxillary/ mandibular and mesial/distal for the prevalence data.

Answer: We assume the reviewer mentions table 2 in this context. We agree to the reviewer's comments and we will remove Table 2, the information of which is already provided in table 3. Also, we agree to change the word "prevalence" to "overall" in Table 3.

Competing Interests: No competing interests were disclosed.

Reviewer Report 21 April 2022

<https://doi.org/10.21956/wellcomeopenres.19674.r49780>

© 2022 Devraj I. This is an open access peer review report distributed under the terms of the [Creative Commons Attribution License](#), which permits unrestricted use, distribution, and reproduction in any medium, provided the original work is properly cited.



Indira Mysore Devraj 

Department of Paediatric and Preventive Dentistry, JSS Dental College and Hospital, JSS Academy of Higher Education and Research, Mysuru, Karnataka, India

I first congratulate the Authors for establishing a new classification for primary anterior teeth.

The authors have designed the study very well. The methodology has been explained step by step for easy reproducibility. The conclusion drawn from the results is appropriate. The classification is easily understandable and applicable for chairside use.

In the aim of the study, the authors have mentioned: "to modify OXIS and propose a classification for the primary canines and other primary anterior teeth."

Applicability and generalizability of Modified OXIS to the Incisors need to be explored as a separate study as this was not evaluated here in this study.

Is the work clearly and accurately presented and does it cite the current literature?

Yes

Is the study design appropriate and is the work technically sound?

Yes

Are sufficient details of methods and analysis provided to allow replication by others?

Yes

If applicable, is the statistical analysis and its interpretation appropriate?

Yes

Are all the source data underlying the results available to ensure full reproducibility?

Yes

Are the conclusions drawn adequately supported by the results?

Yes

Competing Interests: No competing interests were disclosed.

Reviewer Expertise: Infant oral health care and preventive dentistry

I confirm that I have read this submission and believe that I have an appropriate level of expertise to confirm that it is of an acceptable scientific standard.

Author Response 28 May 2022

M KIRTHIGA, Sri Ramachandra Faculty of Dental Sciences, Sri Ramachandra Institute of Higher Education and Research, Porur, Chennai, India

We thank the reviewer for her valuable inputs. We agree to the reviewer's comment. Although we propose that this classification could be applied to primary canines and other anterior teeth, a separate study needs to be conducted on incisors in order to explore its applicability and generalizability.

Competing Interests: No competing interests were disclosed.
