

CORRECTION

Open Access



# Correction to: NAP1L1 interacts with hepatoma-derived growth factor to recruit c-Jun inducing breast cancer growth

Shu Liu<sup>1,2\*†</sup>, Yewei Zhang<sup>2†</sup>, Shien Cui<sup>3,4†</sup>, Dajiang Song<sup>6†</sup>, Bo Li<sup>2</sup>, Qian Chen<sup>2</sup>, Guangyu Yao<sup>3\*</sup> and Bin Gong<sup>5\*</sup> 

**Correction to: *Cancer Cell International* (2021) 21:605**

<https://doi.org/10.1186/s12935-021-02301-3>

In this article [1], two pictures incorrectly placed in Figures 4C and 5A; the correct Figs. 4 and 5 should have appeared as shown in this erratum.

---

The original article can be found online at <https://doi.org/10.1186/s12935-021-02301-3>.

---

\*Correspondence: 3543359430@qq.com; yaogy@smu.edu.cn;  
gb18573204146@163.com

†Shu Liu, Yewei Zhang, Shien Cui and Dajiang Song contributed equally to this work

<sup>1</sup> Department of Breast Surgery, The Affiliated Hospital of Guizhou Medical University, Guiyang 550001, Guizhou, People's Republic of China

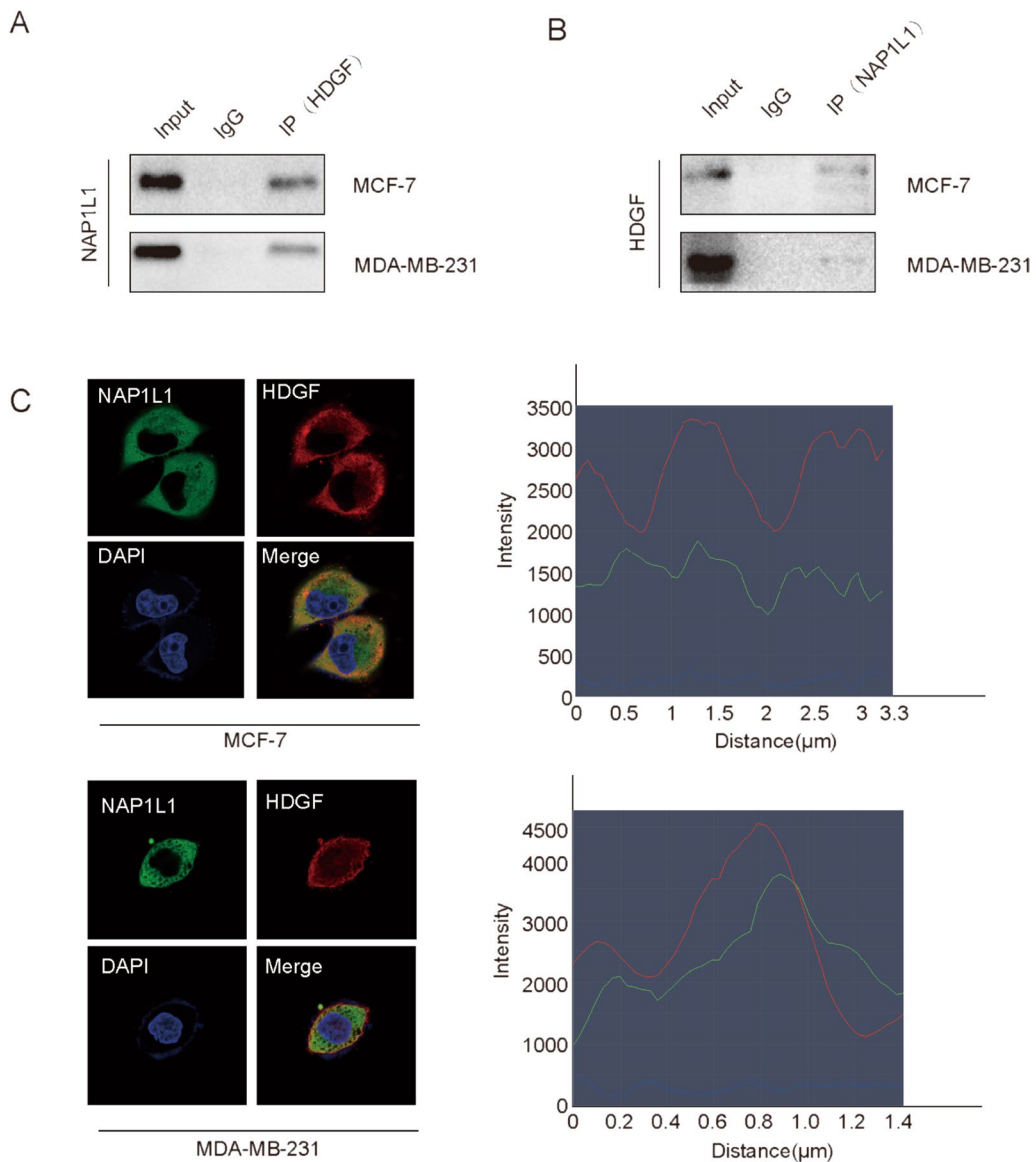
<sup>3</sup> Breast Center, Department of General Surgery, Nanfang Hospital Southern Medical University, Guangzhou, China

<sup>5</sup> Cancer Center, Integrated Hospital of Traditional Chinese Medicine, Southern Medical University, Guangzhou, China

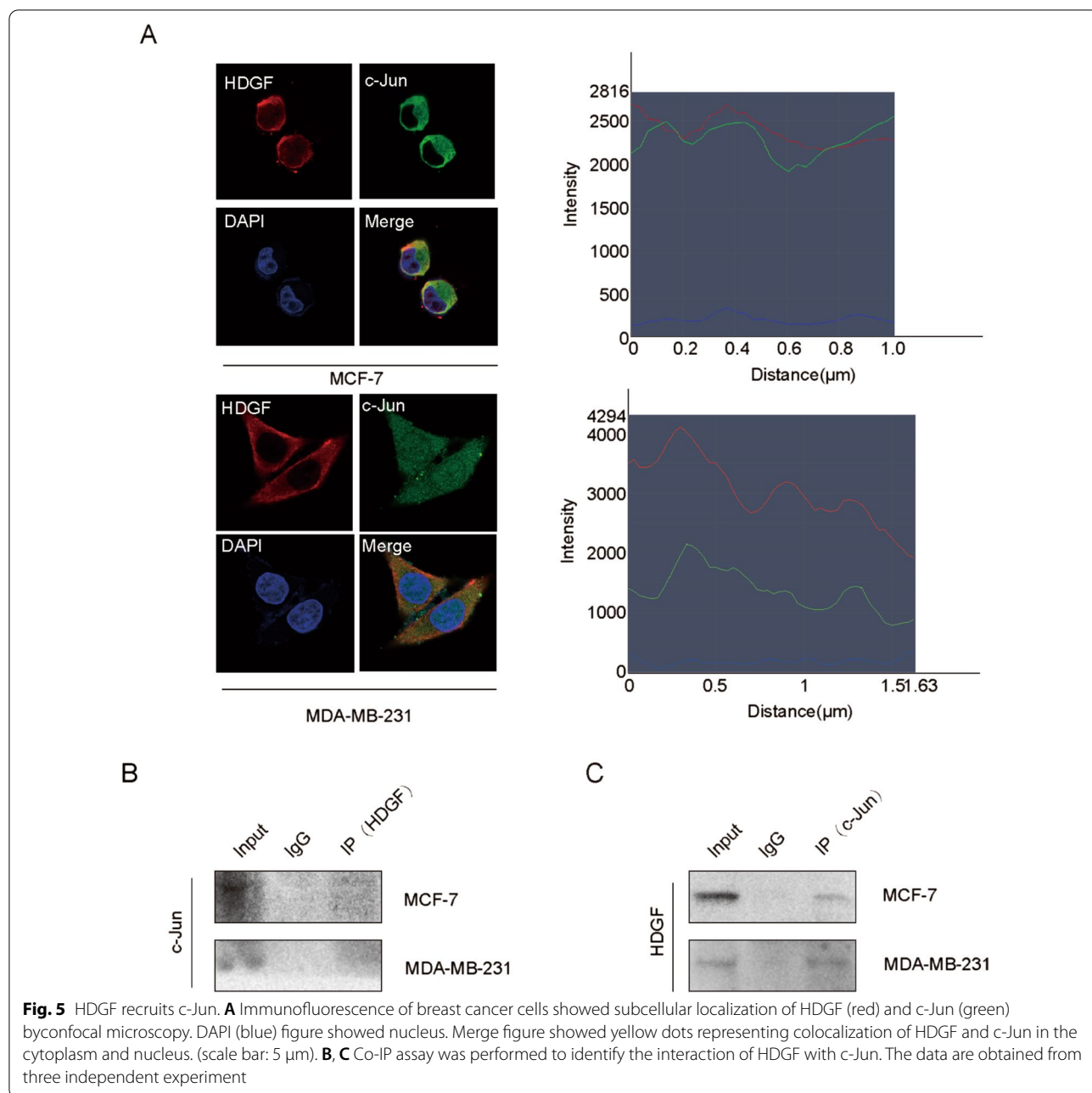
Full list of author information is available at the end of the article



© The Author(s) 2022. **Open Access** This article is licensed under a Creative Commons Attribution 4.0 International License, which permits use, sharing, adaptation, distribution and reproduction in any medium or format, as long as you give appropriate credit to the original author(s) and the source, provide a link to the Creative Commons licence, and indicate if changes were made. The images or other third party material in this article are included in the article's Creative Commons licence, unless indicated otherwise in a credit line to the material. If material is not included in the article's Creative Commons licence and your intended use is not permitted by statutory regulation or exceeds the permitted use, you will need to obtain permission directly from the copyright holder. To view a copy of this licence, visit <http://creativecommons.org/licenses/by/4.0/>. The Creative Commons Public Domain Dedication waiver (<http://creativecommons.org/publicdomain/zero/1.0/>) applies to the data made available in this article, unless otherwise stated in a credit line to the data.



**Fig. 4** NAP1L1 interacts with HDGF. **A, B** Co-IP assay was performed to identify the interaction of NAP1L1 with HDGF. **C** Immunofluorescence of breast cancer cells showed subcellular localization of NAP1L1 (green) and HDGF (red) by confocal microscopy. DAPI (blue) figure showed nucleus. Merge figure showed yellow dots representing colocalization of NAP1L1 and HDGF in the cytoplasm. (scale bar: 5 μm). The data are obtained from three independent experiment



**Author details**

<sup>1</sup>Department of Breast Surgery, The Affiliated Hospital of Guizhou Medical University, Guiyang 550001, Guizhou, People's Republic of China. <sup>2</sup>Guizhou Medical University, Guiyang, Guizhou, China. <sup>3</sup>Breast Center, Department of General Surgery, Nanfang Hospital Southern Medical University, Guangzhou, China. <sup>4</sup>Breast Center, Department of General Surgery, Zhongshan City People's Hospital, Zhongshan, Guangzhou, China. <sup>5</sup>Cancer Center, Integrated Hospital of Traditional Chinese Medicine, Southern Medical University, Guangzhou, China. <sup>6</sup>Department of Oncology Plastic Surgery, Hunan Province Cancer Hospital and The Affiliated Cancer Hospital of Xiangya School of Medicine, Central South University, Changsha, Hunan, China.

**Reference**

1. Liu S, Zhang Y, Cui S, Song D, Li B, Chen Q, Yao G, Gong B. NAP1L1 interacts with hepatoma-derived growth factor to recruit c-Jun inducing breast cancer growth. *Cancer Cell Int.* 2021;21:605.

**Publisher's Note**

Springer Nature remains neutral with regard to jurisdictional claims in published maps and institutional affiliations.