

Original Article



# Effect of Ambrisentan Therapy on the Expression of Endothelin Receptor, Endothelial Nitric Oxide Synthase and NADPH Oxidase 4 in Monocrotaline-induced Pulmonary Arterial Hypertension Rat Model

Hyeryon Lee , PhD<sup>1</sup>, Arim Yeom , BA<sup>1</sup>, Kwan Chang Kim , MD, PhD<sup>2</sup>, and Young Mi Hong , MD, PhD<sup>1</sup>

<sup>1</sup>Department of Pediatrics, Ewha Womans University College of Medicine, Seoul, Korea

<sup>2</sup>Department of Thoracic and Cardiovascular Surgery, Ewha Womans University College of Medicine, Seoul, Korea



Received: Jan 6, 2019

Revised: Mar 4, 2019

Accepted: Apr 3, 2019

**Correspondence to**

Young Mi Hong, MD, PhD




Department of Pediatrics, Ewha Womans University College of Medicine, 1071 Anyangcheon-ro, Yangcheon-gu, Seoul 07985, Korea.

E-mail: ymhong@ewha.ac.kr

Copyright © 2019. The Korean Society of Cardiology

This is an Open Access article distributed under the terms of the Creative Commons Attribution Non-Commercial License (<https://creativecommons.org/licenses/by-nc/4.0>) which permits unrestricted noncommercial use, distribution, and reproduction in any medium, provided the original work is properly cited.

**ORCID iDs**

Hyeryon Lee   
<https://orcid.org/0000-0002-8566-7503>  
Arim Yeom   
<https://orcid.org/0000-0001-6343-4648>  
Kwan Chang Kim   
<https://orcid.org/0000-0001-8297-5415>  
Young Mi Hong   
<https://orcid.org/0000-0002-6600-7876>

## ABSTRACT

**Background and Objectives:** Elevated endothelin (ET)-1 level is strongly correlated with the pathogenesis of pulmonary arterial hypertension (PAH). Expression level of nicotinamide adenine dinucleotide phosphate oxidase (NOX) 4 is increased in the PAH patients. Ambrisentan, a selective endothelin receptor A (ERA) antagonist, is widely used in PAH therapy. The current study was undertaken to evaluate the effects of ambrisentan treatment in the monocrotaline (MCT)-induced PAH rat model.

**Methods:** Rats were categorized into control group (C), monocrotaline group (M) and ambrisentan group (Am). The M and Am were subcutaneously injected 60 mg/kg MCT at day 0, and in Am, ambrisentan was orally administered the day after MCT injection for 4 weeks. The right ventricle (RV) pressure was measured and pathological changes of the lung tissues were observed by Victoria blue staining. Protein expressions of ET-1, ERA, endothelial nitric oxide synthase (eNOS) and NOX4 were confirmed by western blot analysis.

**Results:** Ambrisentan treatment resulted in a recovery of the body weight and RV/left ventricle+septum at week 4. The RV pressure was lowered at weeks 2 and 4 after ambrisentan administration. Medial wall thickening of pulmonary arterioles and the number of intra-acinar arteries were also attenuated by ambrisentan at week 4. Protein expression levels of ET-1 and eNOS were recovered at weeks 2 and 4, and ERA levels recovered at week 4.

**Conclusions:** Ambrisentan administration resulted in the recovery of ET-1, ERA and eNOS protein expression levels in the PAH model. However, the expression level of NOX4 remained unaffected after ambrisentan treatment.

**Keywords:** Hypertension, pulmonary; Endothelin receptor antagonists; Monocrotaline; Gene expression

**Conflict of Interest**

The authors have no financial conflicts of interest.

**Author Contributions**

Conceptualization: Hong YM, Kim KC;

Investigation: Lee H, Yeom A, Kim KC; Writing - original draft: Lee H; Writing - review & editing: Hong YM.

**INTRODUCTION**

Pulmonary arterial hypertension (PAH) is a fatal disease, characterized by elevation of the pulmonary artery pressure.<sup>1)</sup> PAH is a multifactorial disease involving endothelial dysfunction and pulmonary arteriole remodeling.<sup>2)</sup> Many signaling molecules, including endothelin (ET)-1, ET receptor, and the endothelial-derived vasoactive molecules such as nitric oxide, play a critical role in the pathophysiology of the disease.<sup>3)</sup>

ET-1 is a strong vasoconstrictor that induces proliferation of vascular smooth muscle cells,<sup>4)</sup> and has been targeted for therapy of numerous hypertensive diseases. ET-1 exerts pathophysiological changes in PAH by stimulating the constriction of pulmonary vessels and uncontrolled proliferation of vascular smooth muscle cells. The ET system is activated in plasma and lung tissues in both the PAH animal model as well as in PAH patients.<sup>5)</sup> Cells exhibit 2 types of receptors to facilitate binding of ET: type A and B. Smooth muscle cells express both type A and B, whereas endothelial cells express only type A receptors. Stimulation of ET receptors type A and B on the surface of smooth muscle cell promotes vasoconstriction and proliferative effects of ET. However, stimulation of the ET receptor type B induces production of nitric oxide and prostacyclin, which in turn induce vasodilation and anti-proliferating effects.<sup>6)</sup>

Endothelial nitric oxide synthase (eNOS) and nicotinamide adenine dinucleotide phosphate oxidase (NOX) modulate reactive oxygen species, stimulation of vasoconstriction and vascular remodeling in PAH.<sup>7)</sup> In the experimental PAH model, there is increased expression and activity of NOX4, which is identified to be responsible for modulating the production of the reactive oxygen species.<sup>8)</sup> In our previous study, we noticed that NOX4 protein expression level was increased by ET-1 treatment in pulmonary arterial smooth muscle cells.<sup>9)</sup> It has also been found that ET-1 increases vascular superoxide via NOX in deoxycorticosterone acetate-salt hypertension rat model.<sup>10)</sup> Likewise, lung biopsy samples from PAH patients also reveal an imbalance in the levels of reactive oxygen species.<sup>11)</sup>

Ambrisentan, an orally active diphenyl propionic acid derivative, is a potent ET receptor type A selective antagonist, having a half-life of 9 to 15 hours, that enables a once-daily dosing.<sup>12)13)</sup>

However, to date, there are no reports on the effect of ambrisentan on NOX4. Therefore, we considered it worthwhile to investigate the effects of ambrisentan treatment on NOX4 production in animal models. This study therefore investigated the effects of ambrisentan by evaluating the pathophysiology in PAH.

**METHODS****Animals**

Six-week old male Sprague Dawley rats were purchased from Orient Bio (Orient Bio Inc., Seongnam, Korea). The rats were maintained under climate-controlled conditions with a 12:12-hour light:dark cycle, with free access to standard chow and water. All animals were treated in accordance with the guidelines of the Institutional Animal Care and Use Committee (IACUC) at the Ewha Womans University (IACUC approval No. ESM16-0356).

**Experimental protocols**

The rats were classified into 3 groups: control group (C), monocrotaline group (M) and ambrisentan group (Am). Saline was injected subcutaneously to the C. To the both M and

Am, monocrotaline (MCT) 60 mg/kg were injected subcutaneously at day 0. Subsequently, from day 1 onwards, ambrisentan was administered (0.2 mg/kg, per os) to the Am group, every day for 4 weeks. The rats were sacrificed at weeks 2 and 4. Body and organ weight were measured, and the ratio was calculated as follows; organ / body weight (g)  $\times 10000$ . The tissues were harvested and immediately frozen in liquid nitrogen for western blot, or fixed in 10% formalin for pathological examination.

### Hemodynamics

To evaluate the effects of ambrisentan, right ventricle (RV) pressure was measured in anesthetized rats. Briefly, the rats were anesthetized and placed on a thermostatically controlled heating box for maintaining the body temperature. A catheter was inserted into the right external jugular vein, and the mean RV pressure was measured in this study.

### Pathological changes in the pulmonary arteries

For histopathological evaluation, the lung tissues were embedded in paraffin and sectioned. The sections were cut into 3–5  $\mu\text{m}$  thickness and stained with hematoxylin-eosin and Victoria blue. More than 20 fields of pulmonary arterioles ranging 25–100  $\mu\text{m}$  in diameter were observed. This method was based on our previous reports.<sup>14)</sup>

### Western blot analysis

The harvested tissues were homogenized in lysis buffer (Proprep; IntRON Biotechnology, Gyeonggi, Korea) on ice. After 1 hour, the samples were centrifuged at 12,000 rpm in 4°C. The protein content in supernatant was quantified with an enzyme-linked immunosorbent assay reader (Molecular Devices, Sunnyvale, CA, USA) at 562 nm, based on a bovine serum albumin (BSA) standard curve. The amount of supernatant containing 25–35  $\mu\text{g}$  of protein was used for 8–12% sodium dodecyl sulfate polyacrylamide gel electrophoresis. Proteins resolved on the acrylamide gel by electrophoresis were transferred onto nitrocellulose membranes. The membranes were blocked with 5% BSA in tris-buffered saline containing 0.1% tween 20, for 1 hour at room temperature. Membranes were then washed, incubated overnight at 4°C with appropriate primary antibodies of ET-1 (Abcam, Cambridge, MA, USA), endothelin receptor A (ERA; Santa Cruz Biotechnology, Santa Cruz, CA, USA), eNOS (Santa Cruz Biotechnology) and NOX4 (Santa Cruz Biotechnology) separately, after which the probed membranes were incubated with the corresponding secondary antibodies. Membranes were then washed and visualized by subjecting to a chemiluminescent reaction using an enhanced chemiluminescence detection kit (GE Healthcare, Piscataway, NJ, USA).

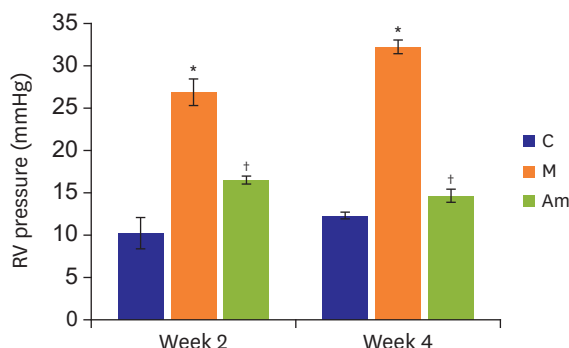
### Statistical analysis

Statistical analysis was performed using PRISM 5 (GraphPad Software, San Diego, CA, USA). A Kruskal-Wallis test was used for the comparison of differences in the 3 groups and a Mann-Whitney test was used for comparisons between groups with Bonferroni correction. Animals were randomized within each experimental group. All data are presented as mean  $\pm$  standard deviation. A p value of  $<0.05$  is considered statistically significant.

## RESULTS

### RV pressure in 3 groups

MCT administration significantly increased the RV pressure in the M as compared to the C at weeks 2 (C vs. M;  $10.33 \pm 1.76$  mmHg vs.  $27.00 \pm 1.47$  mmHg,  $p=0.001$ ) and 4 (C vs. M;



**Figure 1.** RV pressure in MCT-induced PAH model after ambrisentan treatment. RV pressure increased in the M compared to the C at weeks 2 and 4. The RV pressure decreased in the Am compared with the M at weeks 2 and 4. RV = right ventricle; MCT = monocrotaline; PAH = pulmonary arterial hypertension; C = control group; M = monocrotaline group; Am = ambrisentan group. \*p<0.05 as compared with the C; †p<0.05 as compared with the M.

12.33±0.33 mmHg vs. 32.40±0.76 mmHg, p<0.001). Early concurrent oral administration of ambrisentan significantly decreased the right ventricular systolic pressure at weeks 2 (M vs. Am; 27.00±1.47 mmHg vs. 16.60±0.40 mmHg, p<0.001) and 4 (M vs. Am; 32.40±0.76 mmHg vs. 14.67±0.80 mmHg, p<0.001) (**Figure 1**).

### Changes of the body weight in 3 groups

At week 4, the body weight (BW) decreased significantly in the M group as compared to the C group (C vs. M; 441.25±7.77 g vs. 327.30±9.92 g, p<0.001). Recovery in the BW was observed in the Am group at week 4 (M vs. Am; 327.30±9.92 g vs. 394.33±10.82 g, p<0.001) (**Table 1**). With the onset of RV hypertrophy, the RV/[left ventricle (LV)+septum (S)] weight ratio increased in the M at week 2 (C vs. M; 0.30±0.02 vs. 0.41±0.02, p=0.005) and 4 (C vs. M; 0.32±0.02 vs. 0.93±0.09, p<0.001), which decreased significantly in the Am at weeks 2 (M vs. Am; 0.41±0.02 vs. 0.36±0.01, p=0.035) and 4 (M vs. Am; 0.93±0.09 vs. 0.61±0.04, p=0.007). Furthermore, the RV weight/BW ratio decreased in the Am at week 4 (M vs. Am; 19.80±1.73 vs. 13.82±0.85, p=0.010).

The lung weight/BW ratio increased in the M at week 4 (C vs. M; 39.18±1.30 vs. 68.01±2.17, p<0.001), and decreased in the Am (M vs. Am; 68.01±2.17 vs. 55.64±3.22, p=0.014) (**Table 1**).

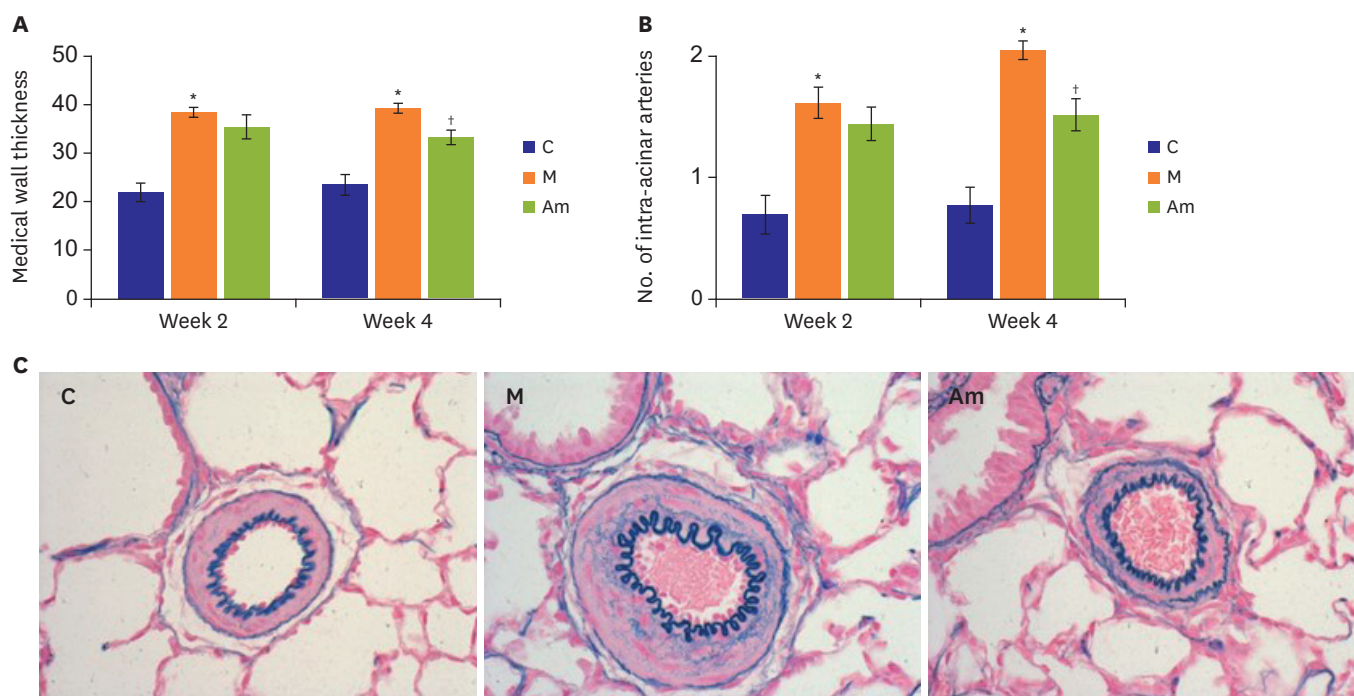
### Lung pathology in 3 groups

MCT-induced PAH resulted in pulmonary arteriole remodeling, characterized by medial wall thickening and angiogenesis. The lung pathology data are presented in **Figure 2**. Compared to the C, increased medial wall thickness was observed in the M at weeks 2 (C vs. M; 21.99±1.95 vs. 38.43±0.94, p<0.001) and 4 (C vs. M; 23.60±2.17 vs. 38.25±0.66, p<0.001). The number of intra-acinar arteries also increased in the M at weeks 2 (C vs. M; 0.70±0.14 vs. 1.60±0.12, p=0.002) and 4 (C vs. M; 0.77±0.14 vs. 2.05±0.08, p<0.001). Conversely, medial wall thickening

**Table 1.** Changes of BW and organ weight/BW ratio after low-dose ambrisentan treatment

Week	Group	BW (g)	RV/LV+S	RV/BW	LV/BW	Lung/BW	K/BW	Liver/BW
2	C (n=6)	353.00±3.97	0.30±0.02	7.28±0.56	24.00±0.61	42.97±0.46	45.89±0.92	420.96±3.92
	M (n=6)	307.30±7.69	0.41±0.02*	9.13±0.29*	22.47±0.34	57.94±1.88	52.04±2.21	438.20±15.74
	Am (n=6)	298.30±3.91	0.36±0.01†	9.05±0.22	25.34±0.66	65.40±0.88	44.68±0.83	461.56±2.69
4	C (n=6)	441.25±7.77	0.32±0.02	6.48±0.40	19.97±0.42	39.18±1.30	42.34±1.37	367.21±18.97
	M (n=6)	327.30±9.92*	0.93±0.09*	19.80±1.73*	21.54±1.12	68.01±2.17*	43.60±4.16	416.44±34.47
	Am (n=6)	394.33±10.82†	0.61±0.04†	13.82±0.85†	22.87±0.81	55.64±3.22†	42.65±2.30	396.23±6.89

BW = body weight; RV = right ventricle; LV = left ventricle; S = septum; K = kidney; C = control group; M = monocrotaline group; Am = ambrisentan group. \*p<0.05 as compared with the C; †p<0.05 as compared with the M.



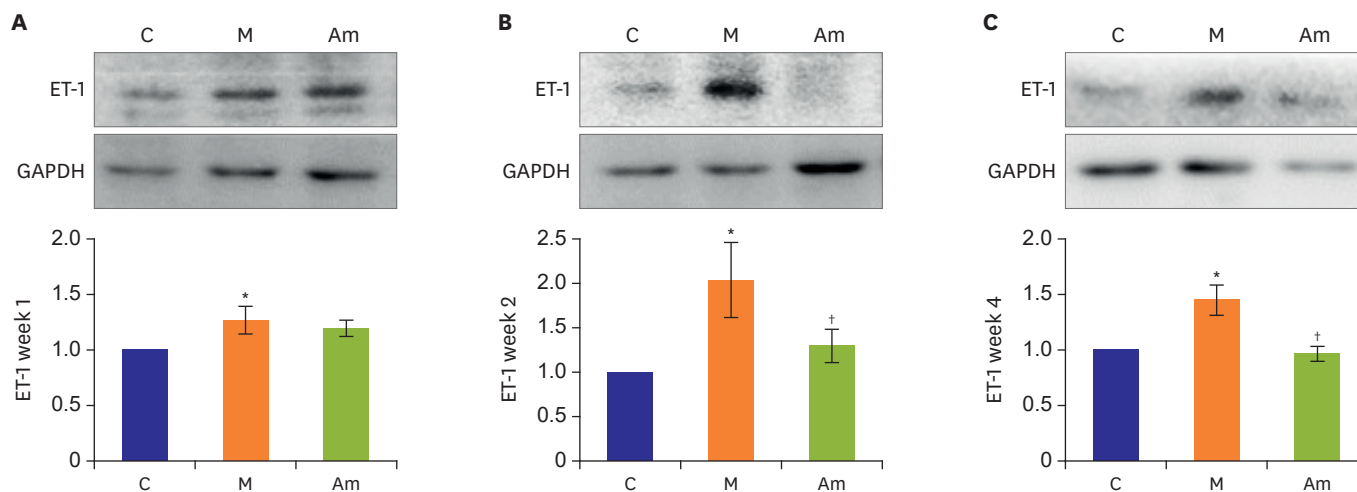
**Figure 2.** Pulmonary pathology in MCT-induced PAH model after ambrisentan treatment (400× images). (A, C) Pulmonary arteriole medial wall thickness was decreased in the Am at week 4. (B) The number of intra-acinar arteries was reduced in the Am at week 4.

MCT = monocrotaline; PAH = pulmonary arterial hypertension; C = control group; M = monocrotaline group; Am = ambrisentan group. \*p<0.05 as compared with the C; †p<0.05 as compared with the M.

and angiogenesis decreased in the Am. Medial wall thickness decreased in the Am at week 4 (M vs. Am;  $38.25 \pm 0.66$  vs.  $33.58 \pm 1.78$ ,  $p=0.008$ ), and the number of intra-acinar arteries also decreased in the Am at week 4 (M vs. Am;  $2.05 \pm 0.08$  vs.  $1.50 \pm 0.13$ ,  $p=0.008$ ).

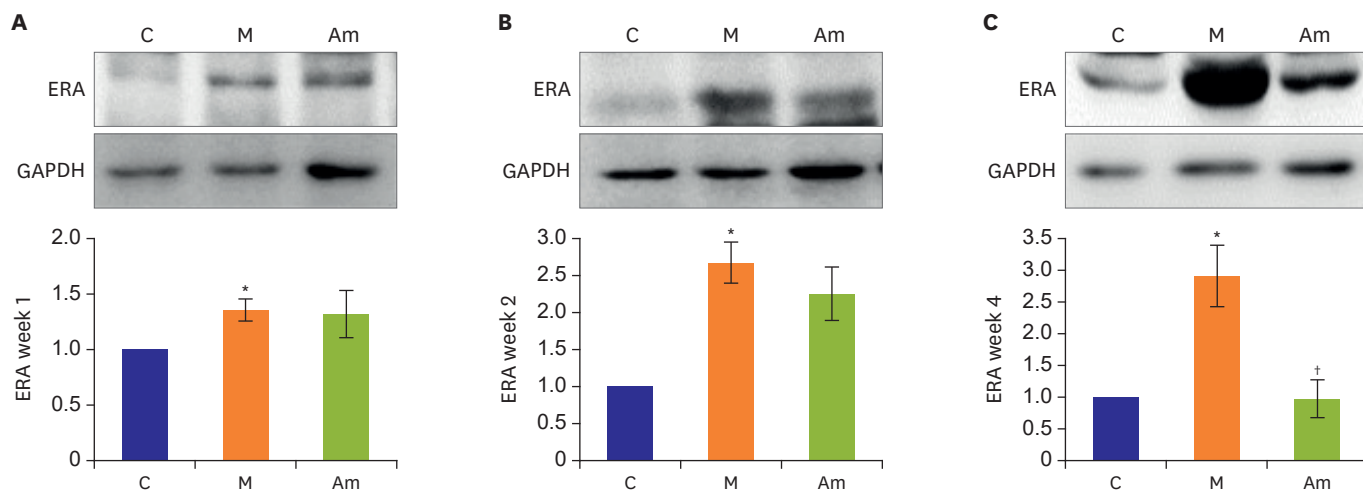
### ET-1 and ERA protein expression levels in lung tissues in 3 groups

Administration of MCT injection significantly increased the ET-1 and ERA protein expression levels from week 1 (Figure 3 and 4). However, ambrisentan treatment resulted in decreased



**Figure 3.** ET-1 protein expression level in lung tissues of MCT-induced PAH model after ambrisentan treatment. ET-1 protein expression decreased significantly in lung tissues of PAH rat model 2 weeks after ambrisentan treatment.

ET = endothelin; MCT = monocrotaline; PAH = pulmonary arterial hypertension; C = control; M = monocrotaline; Am = ambrisentan. \*p<0.05 as compared with the C; †p<0.05 as compared with the M.



**Figure 4.** ERA protein expression level in lung tissues of MCT-induced PAH model after ambrisentan treatment. ERA protein expression decreased in lung tissues of PAH rat model 4 weeks after ambrisentan treatment.

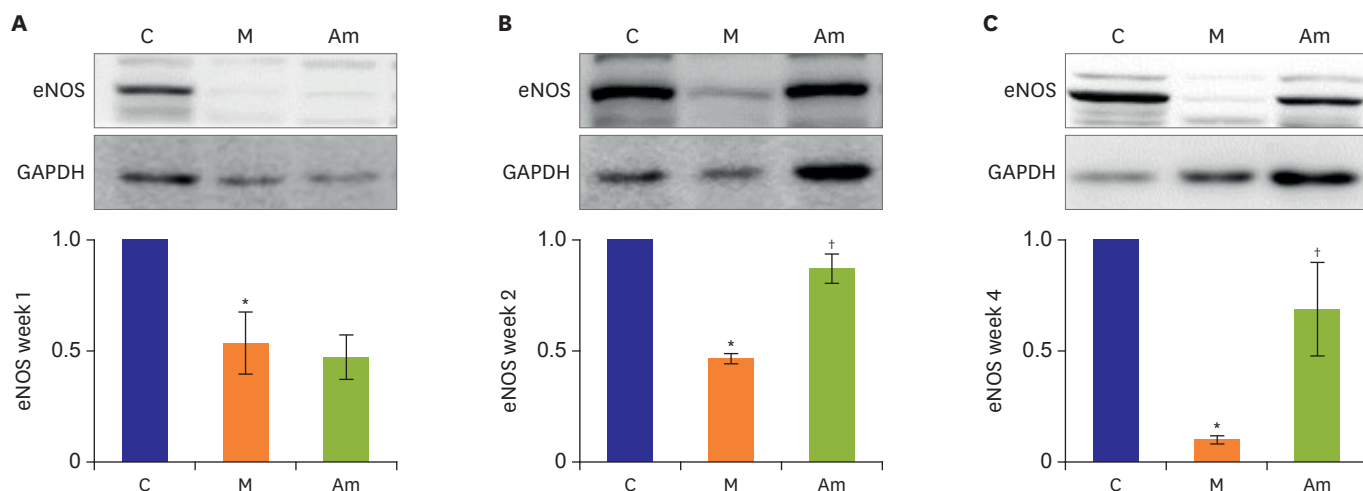
ERA = endothelin receptor A; MCT = monocrotaline; PAH = pulmonary arterial hypertension; C = control; M = monocrotaline; Am = ambrisentan.

\* $p < 0.05$  as compared with the C; † $p < 0.05$  as compared with the M.

ET-1 expression as compared to the M at week 2 (M vs. Am;  $2.03 \pm 0.43$  vs.  $1.28 \pm 0.19$ ,  $p = 0.025$ ) and 4 (M vs. Am;  $1.45 \pm 0.21$  vs.  $0.96 \pm 0.06$ ,  $p = 0.043$ ). The protein expression levels of ERA also decreased at week 4 (M vs. Am;  $2.93 \pm 0.48$  vs.  $0.98 \pm 0.30$ ,  $p = 0.006$ ).

### eNOS protein expression levels in the lung tissues in 3 groups

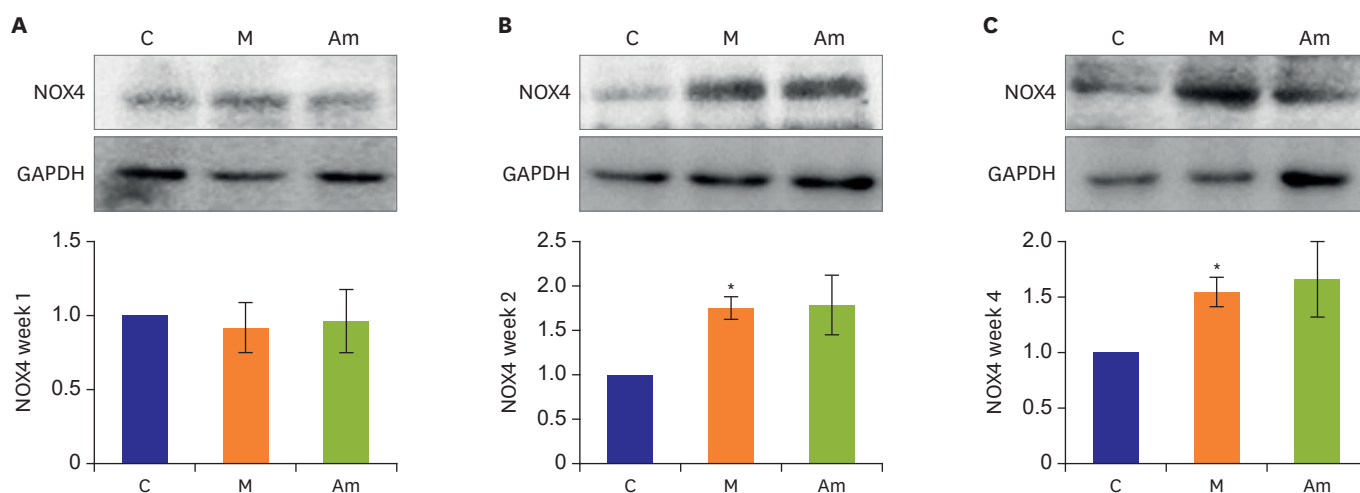
Decrease in the eNOS protein level was observed in the M, as compared with the C, from week 1 (Figure 5). The decreased eNOS levels were dramatically recovered in the Am at weeks 2 (M vs. Am;  $0.46 \pm 0.02$  vs.  $0.87 \pm 0.07$ ,  $p < 0.001$ ) and 4 (M vs. Am;  $0.10 \pm 0.02$  vs.  $0.69 \pm 0.21$ ,  $p = 0.004$ ).



**Figure 5.** eNOS protein expression level in lung tissues of MCT-induced PAH model after ambrisentan treatment. Two weeks after ambrisentan treatment, eNOS protein expression increased significantly compared with the M in lung tissues of MCT-induced PAH rat model.

eNOS = endothelial nitric oxide synthase; MCT = monocrotaline; PAH = pulmonary arterial hypertension; C = control group; M = monocrotaline group; Am = ambrisentan group.

\* $p < 0.05$  as compared with the C; † $p < 0.05$  as compared with the M.



**Figure 6.** NOX4 protein expression in lung tissues of MCT-induced PAH model level after ambrisentan treatment. There were no significant changes in NOX4 protein expression level.

NOX = nicotinamide adenine dinucleotide phosphate oxidase; MCT = monocrotaline; PAH = pulmonary arterial hypertension; C = control; M = monocrotaline; Am = ambrisentan.

\*p < 0.05 as compared with the C.

### NOX4 protein expression levels in the lung tissues in 3 groups

Protein expression level of NOX4 increased at weeks 2 (C vs. M;  $1.00 \pm 0.00$  vs.  $1.74 \pm 0.17$ ,  $p = 0.005$ ) and 4 (C vs. M;  $1.00 \pm 0.00$  vs.  $1.54 \pm 0.14$ ,  $p = 0.007$ ). However, no subsequent changes of NOX4 protein expression levels were observed after ambrisentan administration (Figure 6).

## DISCUSSION

Taken together, our results show that oral administration of low-dose ambrisentan effectively recovers or slows down the progression of PAH in the MCT-induced animal model. Ambrisentan is an established drug used in the multifactorial disease PAH, but efficacy of low dose treatments in an animal model is yet to be researched. In this study, the administration of ambrisentan, an ETA-selective receptor antagonist, improved the RV pressure and pulmonary pathology, and induced changes in the expression levels of proteins involved in vasoconstriction in the lung tissues of MCT-induced PAH rat model.

Results from the current study reveal that oral administration of low dose ambrisentan reduced the RV pressure and RV hypertrophy at weeks 2 and 4 after administration. Recovery in the BW, and decrease in the medial wall thickness of pulmonary arteriole and the number of intra-acinar arteries were observed at week 4. Protein expression levels of ET-1 and eNOS were recovered in the lung tissues of MCT-induced PAH rat model at weeks 2 and 4, whereas protein expression of ERA was decreased at week 4. However, the NOX4 expression remained unchanged in the lung tissues of MCT-induced PAH rat after ambrisentan administration.

In the present and previous studies, ET-1 and ERA protein expression levels were increased at weeks 2 and 4 after MCT injection, suggesting their importance in the progression of cardiopulmonary pathology in MCT-induced PAH rat model.<sup>14)</sup> In the 2016 study by Lee et al.<sup>15)</sup>, plasma ET-1 levels were found to be significantly increased in the MCT model.<sup>16)</sup> The protein expression level of eNOS decreased from 1 week after the MCT injection, whereas the NOX4 protein level was increased at week 4 in lung tissues of the MCT treated rat model.

The 2016 study by Lee et al.<sup>15)</sup> further reported that eNOS protein expression level in lung tissues was significantly decreased, and plasma cyclic guanosine monophosphate level was also decreased in the MCT rat model.<sup>17)</sup> However, other studies have reported increased eNOS expression level in PAH. It is thought that the changes in the expression correspond to the progression of the disease.<sup>18)</sup>

Elevated expression of the NOX4 protein in lung tissues were observed at weeks 2 and 4 in the MCT-induced PAH rat model. The 2017 study by Wu et al.<sup>19)</sup> reported increased expression levels of the NOX2 and NOX4 proteins. Since NOX4 is the major isoform expressed in PAH, its increased level have been reported in the lung tissues of PAH patients.<sup>20)</sup> Furthermore, elevated levels of NOX4 were also reported in the endothelium and fibroblasts of pulmonary arteries.<sup>21)</sup> They suggested the involvement of NOX4 in the characteristic changes associated with fibroblasts, vascular remodeling and development of PAH.<sup>22)</sup>

The present study revealed attenuation of RV pressure, RV hypertrophy and pulmonary arteriole vessel wall thickening after treatment of ambrisentan. The effect of ambrisentan in this study was similar to that of bosentan in our previous study, with respect to lowering the RV pressure at week 4.<sup>23)</sup> This finding is consistent with a previous report by Kosanovic et al.<sup>24)</sup> in 2011, who reported that a selective ERA antagonist TBC3711 improved the ratio of RV/(LV+S) weight, RV weight and medial wall thickness of pulmonary arterioles in the MCT-induced PAH model. The ET-1 and ERA protein expression levels were significantly reduced after a 4-week treatment of ambrisentan in our study, indicating that the inhibitory effects of ambrisentan in the MCT model influenced not only ERA inhibition but also the protein expression levels of ET-1, ERA and eNOS. A 2003 study by Jasmin et al.<sup>25)</sup> revealed significant increase in the endothelin receptor B (ERB) density in RV tissues of the MCT model but interestingly, the altered ET system was attenuated by a selective ERA antagonist. In the current study, the protein expression level of eNOS recovered in the Am at weeks 2 and 4. Nitric oxide is a well-known vasodilator generated by eNOS, and the imbalance of this enzyme elicits abnormal blood pressure.<sup>26)</sup> In another study by Dubois et al.,<sup>27)</sup> impaired eNOS activity resulted in the dysregulation of vascular tone, leading to PAH. Our current study demonstrates that the ETA blocker ambrisentan effectively alleviates eNOS expression in lung tissues.

The half-life of ambrisentan is longer than that of the other drugs (15 hours); the half-life of bosentan and sitaxsentan is 5.4 and 10 hours, respectively.<sup>27)</sup> However, it is still controversial as to which type of blocker is more beneficial for the treatment of PAH: the ERA selective blocker or the dual receptor blocker. Theoretically, an ERA selective blocker, such as ambrisentan, acts on the ETA in vascular smooth muscle cells and inhibits vasoconstriction and mitogenic effects. On the other hand, an ERA/ERB dual blocker, such as bosentan, acts not only on the smooth muscle cells but also on ERB in endothelial cells, and suppresses vasodilation by ET clearance and inhibiting the activation of nitric oxide and prostacyclin.<sup>13)</sup>

Although an approved drug in experimental and clinical pulmonary hypertension, low-dose administration of ambrisentan has not been studied in animal models. Ambrisentan (Letaris®; Gilead, Foster City, CA, USA; Volbris®; GSK, Brentford, UK) was approved by the United States Food and Drug Administration in 2007. Oral administration of 5–10 mg/day dose is recommended for humans, and 10–15 mg/kg/day dose is mainly used in animal efficacy studies.<sup>28)</sup> Ambrisentan is known to improve hemodynamic changes and to increase the exercise capacity in patients with PAH.<sup>29)</sup> In this study, administration of 0.2 mg/kg/



day ambrisentan showed efficacy in improving the RV pressure, pulmonary pathological changes, and eNOS levels in lung tissues. The 2015 study by Iglarz et al.<sup>30)</sup> reported that 1 mg/kg dose of ambrisentan decreased the mean pulmonary artery pressure to 11 mmHg in the Dahl salt-sensitive rat model. These studies clearly indicate that low dose ambrisentan effectively decreases the RV pressure and reduces the progression of medial wall thickening of pulmonary arterioles in the MCT-induced PAH rat model.

In conclusion, MCT-induced PAH rats have characteristic RV hypertrophy and PAH. Imbalance of ET-1, ERA, eNOS and NOX4 protein expression levels are also observed in the lungs of MCT induced PAH rats, suggesting that excessive pulmonary artery contraction may be involved in the ET-1 pathway.

Our study revealed that treatment with low dose ambrisentan suppresses the ET-1 and ERA levels, and improves the eNOS level in the lung tissue of MCT-induced PAH rats. Further research is required to identify the optimum dosage of ambrisentan, and evaluate its dose-dependent effects in low dose treatment.

## REFERENCES

1. Patel BB, Feng Y, Cheng-Lai A. Pulmonary arterial hypertension: a review in pharmacotherapy. *Cardiol Rev* 2015;23:33-51.  
[PUBMED](#) | [CROSSREF](#)
2. Tuder RM, Abman SH, Braun T, et al. Development and pathology of pulmonary hypertension. *J Am Coll Cardiol* 2009;54:S3-9.  
[PUBMED](#) | [CROSSREF](#)
3. Cooke JP. A novel mechanism for pulmonary arterial hypertension? *Circulation* 2003;108:1420-1.  
[PUBMED](#) | [CROSSREF](#)
4. Chester AH, Yacoub MH. The role of endothelin-1 in pulmonary arterial hypertension. *Glob Cardiol Sci Pract* 2014;2014:62-78.  
[PUBMED](#) | [CROSSREF](#)
5. Giaid A, Yanagisawa M, Langleben D, et al. Expression of endothelin-1 in the lungs of patients with pulmonary hypertension. *N Engl J Med* 1993;328:1732-9.  
[PUBMED](#) | [CROSSREF](#)
6. Jernigan NL, Walker BR, Resta TC. Endothelium-derived reactive oxygen species and endothelin-1 attenuate NO-dependent pulmonary vasodilation following chronic hypoxia. *Am J Physiol Lung Cell Mol Physiol* 2004;287:L801-8.  
[PUBMED](#) | [CROSSREF](#)
7. Ismail S, Sturrock A, Wu P, et al. NOX4 mediates hypoxia-induced proliferation of human pulmonary artery smooth muscle cells: the role of autocrine production of transforming growth factor-beta1 and insulin-like growth factor binding protein-3. *Am J Physiol Lung Cell Mol Physiol* 2009;296:L489-99.  
[PUBMED](#) | [CROSSREF](#)
8. Craige SM, Chen K, Pei Y, et al. NADPH oxidase 4 promotes endothelial angiogenesis through endothelial nitric oxide synthase activation. *Circulation* 2011;124:731-40.  
[PUBMED](#) | [CROSSREF](#)
9. Lee H, Kim KC, Hong YM. Change of voltage-gated potassium channel 1.7 expressions in monocrotaline-induced pulmonary arterial hypertension rat model. *Korean J Pediatr* 2018;61:271-8.  
[PUBMED](#) | [CROSSREF](#)
10. Li L, Fink GD, Watts SW, et al. Endothelin-1 increases vascular superoxide via endothelin(A)-NADPH oxidase pathway in low-renin hypertension. *Circulation* 2003;107:1053-8.  
[PUBMED](#) | [CROSSREF](#)
11. Dong F, Zhang X, Wold LE, Ren Q, Zhang Z, Ren J. Endothelin-1 enhances oxidative stress, cell proliferation and reduces apoptosis in human umbilical vein endothelial cells: role of ETB receptor, NADPH oxidase and caveolin-1. *Br J Pharmacol* 2005;145:323-33.  
[PUBMED](#) | [CROSSREF](#)

12. Bowers R, Cool C, Murphy RC, et al. Oxidative stress in severe pulmonary hypertension. *Am J Respir Crit Care Med* 2004;169:764-9.  
[PUBMED](#) | [CROSSREF](#)
13. Casserly B, Klinger JR. Ambrisentan for the treatment of pulmonary arterial hypertension. *Drug Des Devel Ther* 2009;2:265-80.  
[PUBMED](#)
14. Kim KC, Lee JC, Lee H, Cho MS, Choi SJ, Hong YM. Changes in Caspase-3, B cell leukemia/lymphoma-2, interleukin-6, tumor necrosis factor- $\alpha$  and vascular endothelial growth factor gene expression after human umbilical cord blood derived mesenchymal stem cells transfusion in pulmonary hypertension rat models. *Korean Circ J* 2016;46:79-92.  
[PUBMED](#) | [CROSSREF](#)
15. Lee H, Kim KC, Cho MS, Suh SH, Hong YM. Modafinil improves monocrotaline-induced pulmonary hypertension rat model. *Pediatr Res* 2016;80:119-27.  
[PUBMED](#) | [CROSSREF](#)
16. Lim KA, Kim KC, Cho MS, Lee BE, Kim HS, Hong YM. Gene expression of endothelin-1 and endothelin receptor a on monocrotaline-induced pulmonary hypertension in rats after bosentan treatment. *Korean Circ J* 2010;40:459-64.  
[PUBMED](#) | [CROSSREF](#)
17. Sun LR, Wang C, Wu AQ, et al. Gene polymorphism of the endothelial nitric oxide synthase enzyme and pulmonary hypertension in patient with chronic obstructive pulmonary disease. *Zhonghua Jie He He Hu Xi Za Zhi* 2008;31:335-40.  
[PUBMED](#)
18. Giaid A, Saleh D. Reduced expression of endothelial nitric oxide synthase in the lungs of patients with pulmonary hypertension. *N Engl J Med* 1995;333:214-21.  
[PUBMED](#) | [CROSSREF](#)
19. Wu F, Hao Y, Yang J, et al. Protective effects of aloperine on monocrotaline-induced pulmonary hypertension in rats. *Biomed Pharmacother* 2017;89:632-41.  
[PUBMED](#) | [CROSSREF](#)
20. Sturrock A, Cahill B, Norman K, et al. Transforming growth factor-beta1 induces Nox4 NAD(P)H oxidase and reactive oxygen species-dependent proliferation in human pulmonary artery smooth muscle cells. *Am J Physiol Lung Cell Mol Physiol* 2006;290:L661-73.  
[PUBMED](#) | [CROSSREF](#)
21. Barman SA, Fulton D. Adventitial fibroblast Nox4 expression and ROS signaling in pulmonary arterial hypertension. *Adv Exp Med Biol* 2017;967:1-11.  
[PUBMED](#) | [CROSSREF](#)
22. Peng JJ, Liu B, Xu JY, Peng J, Luo XJ. NADPH oxidase: its potential role in promotion of pulmonary arterial hypertension. *Naunyn Schmiedebergs Arch Pharmacol* 2017;390:331-8.  
[PUBMED](#) | [CROSSREF](#)
23. Koo HS, Kim KC, Hong YM. Gene expressions of nitric oxide synthase and matrix metalloproteinase-2 in monocrotaline-induced pulmonary hypertension in rats after bosentan treatment. *Korean Circ J* 2011;41:83-90.  
[PUBMED](#) | [CROSSREF](#)
24. Kosanovic D, Kojonazarov B, Luitel H, et al. Therapeutic efficacy of TBC3711 in monocrotaline-induced pulmonary hypertension. *Respir Res* 2011;12:87.  
[PUBMED](#) | [CROSSREF](#)
25. Jasmin JF, Cernacek P, Dupuis J. Activation of the right ventricular endothelin (ET) system in the monocrotaline model of pulmonary hypertension: response to chronic ETA receptor blockade. *Clin Sci (Lond)* 2003;105:647-53.  
[PUBMED](#) | [CROSSREF](#)
26. Huang PL, Huang Z, Mashimo H, et al. Hypertension in mice lacking the gene for endothelial nitric oxide synthase. *Nature* 1995;377:239-42.  
[PUBMED](#) | [CROSSREF](#)
27. Dubois M, Delannoy E, Duluc L, et al. Biopterin metabolism and eNOS expression during hypoxic pulmonary hypertension in mice. *PLoS One* 2013;8:e82594.  
[PUBMED](#) | [CROSSREF](#)
28. Kingman M, Ruggiero R, Torres F. Ambrisentan, an endothelin receptor type A-selective endothelin receptor antagonist, for the treatment of pulmonary arterial hypertension. *Expert Opin Pharmacother* 2009;10:1847-58.  
[PUBMED](#) | [CROSSREF](#)

29. Barst RJ. A review of pulmonary arterial hypertension: role of ambrisentan. *Vasc Health Risk Manag* 2007;3:11-22.  
[PUBMED](#)
30. Iglarz M, Steiner P, Wanner D, Rey M, Hess P, Clozel M. Vascular effects of endothelin receptor antagonists depends on their selectivity for ETA versus ETB receptors and on the functionality of endothelial ETB receptors. *J Cardiovasc Pharmacol* 2015;66:332-7.  
[PUBMED](#) | [CROSSREF](#)