

# Relating form to function in the hummingbird feeding apparatus

Alejandro Rico-Guevara

Department of Integrative Biology, University of California, Berkeley, CA, United States of America

## ABSTRACT

A complete understanding of the feeding structures is fundamental in order to study how animals survive. Some birds use long and protrusible tongues as the main tool to collect their central caloric source (e.g., woodpeckers and nectarivores). Hummingbirds are the oldest and most diverse clade of nectarivorous vertebrates, being a perfect subject to study tongue specializations. Their tongue functions to intraorally transport arthropods through their long bills and enables them to exploit the nectarivorous niche by collecting small amounts of liquid, therefore it is of vital importance to study its anatomy and structure at various scales. I focused on the portions of the hummingbird tongue that have been shown to be key for understanding their feeding mechanisms. I used histology, transmission and scanning electron microscopy, microCT, and *ex-vivo* experiments in order to advance the comprehension of the morphology and functioning of the hummingbird feeding apparatus. I found that hummingbird tongues are composed mainly of thin cornified epithelium, lack papillae, and completely fill the internal cast of the rostral oropharyngeal cavity. Understanding this puzzle-piece match between bill and tongue will be essential for the study of intraoral transport of nectar. Likewise, I found that the structural composition and tissue architecture of the tongue groove walls provide the rostral portion of the tongue with elastic properties that are central to the study of tongue-nectar interactions during the feeding process. Detailed studies on hummingbirds set the basis for comparisons with other nectar-feeding birds and contribute to comprehend the natural solutions to collecting liquids in the most efficient way possible.

Submitted 14 April 2017

Accepted 19 May 2017

Published 8 June 2017

Corresponding author  
Alejandro Rico-Guevara,  
a.rico@berkeley.edu

Academic editor  
Virginia Abdala

Additional Information and  
Declarations can be found on  
page 24

DOI 10.7717/peerj.3449

© Copyright  
2017 Rico-Guevara

Distributed under  
Creative Commons CC-BY 4.0

## OPEN ACCESS

**Subjects** Biophysics, Zoology, Anatomy and Physiology

**Keywords** Anatomy, Bill, Computed tomography, Electron microscopy, Lingual apparatus, Nectar feeding, Tongue

## INTRODUCTION

A central challenge of biological studies is to describe the links among the structures (e.g., organismal morphology), underlying mechanisms (e.g., biomechanics), and emergent phenomena (e.g., performance, ecological and evolutionary patterns) in live organisms. Birds are an ideal subject to tackle this challenge since they have evolved the most morphologically diverse array of feeding structures among tetrapods (*Rubega, 2000*). A thorough understanding of the form and function of the feeding structures is vital to grasp the functional constraints that steer the evolution of resource exploitation in animals. In birds, it has been recognized that bill shape is tightly correlated to diet (cf. *Rubega, 2000*), however, this idea has been challenged in raptorial birds by the correlation between skull

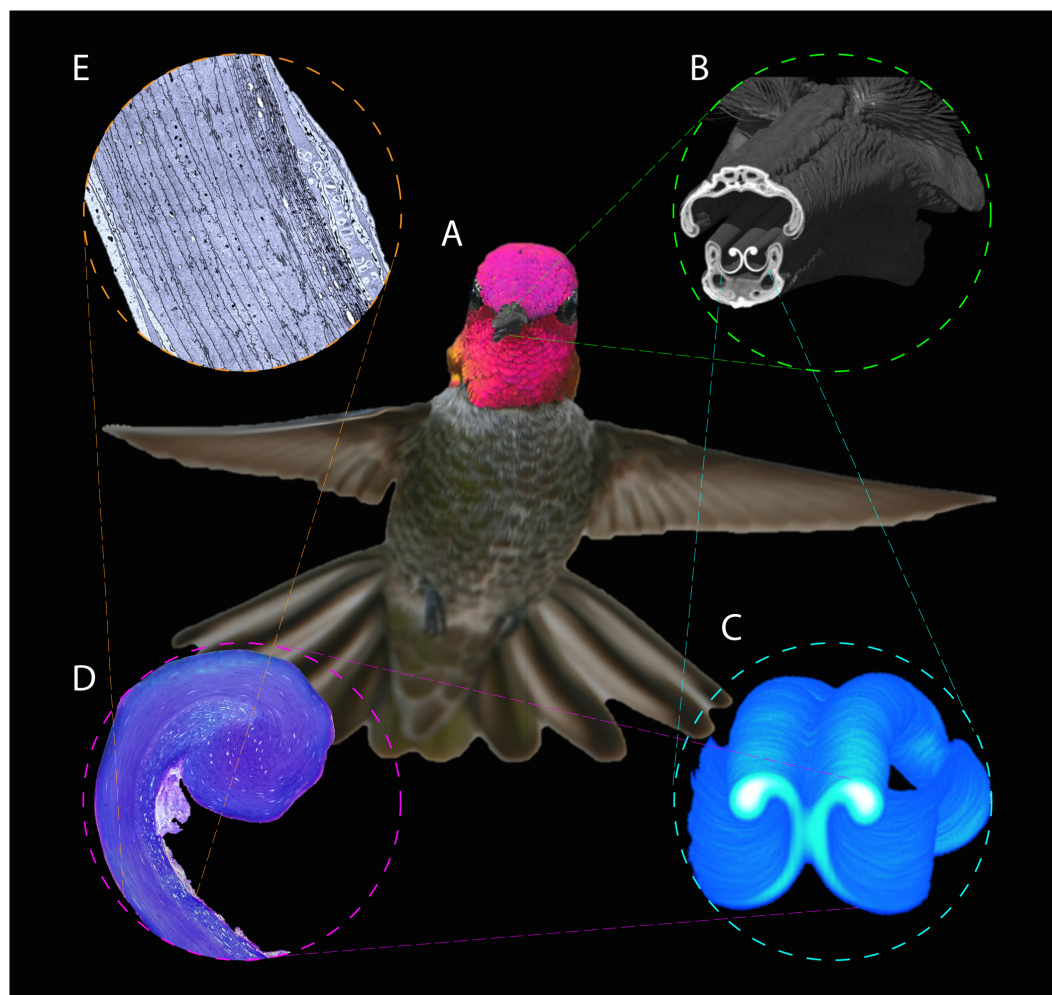
and beak structure implying developmental constraints (Bright *et al.*, 2016). It has been highlighted recently that (1) phylogeny and allometry are determinants in the variation of bill shape, with high diversification rates at the dawn of modern birds followed by a slowed down diversification phase of morpho-space packing (Cooney *et al.*, 2017), and that (2) to fully understand the evolution of the feeding apparatus a reappraisal of the linguo-laryngeal system in the context of the skull-beak coupling is warranted (Homberger, 2017). If bill shape provides information about generally *which* type of food is consumed (e.g., seeds *vs.* meat); as a complement, I hypothesize that lingual apparatus morphology could provide further information about *how* the food is consumed. Examples can be found in the extreme reduction of the tongue of cormorants (Jackowiak, Andrzejewski & Godynicki, 2006), the gigantic papillae of penguins (Kobayashi *et al.*, 1998), and the numerous flexible projections of flamingo tongues (Zweers *et al.*, 1995). Avian tongues present adaptations as extensive and varied as those of bird bills (Farner, 1960). Unveiling the details of the morphology and coupling of the components of the feeding apparatus advances the understanding of its function and evolution.

Birds control the movement of their tongues with muscles attached to the hyobranchial apparatus (set of supporting bones); these ‘intrinsic hyolingual muscles’ (Homberger & Meyers, 1989; Tomlinson, 2000; but see Schwenk, 2001) have their most rostral attachments on a paired bone called the *paraglossum* (cf., Weymouth, Lasiewski & Berger, 1964; or *Osentoglossum*, Newton *et al.*, 1896). Some birds, such as woodpeckers (Shufeldt, 1900; Villard & Cuisin, 2004) and nectar-feeding birds (Stiles, 1981; Paton & Collins, 1989), have to protrude their tongues to procure their food. Interestingly, woodpeckers have the ability to actively control their tongue tips (cf. Bock, 1999), a capacity that is lacking in hummingbirds (Zusi, 2013). The reason for this dissimilarity relies on the differential elongation of the tongue components; in woodpeckers, the portion of the tongue supported by the *paraglossum* is not elongated whereas in hummingbirds this portion is greatly lengthened. In most birds, only the rostral third of the tongue is entirely free of musculature (review in Erdoğan & Iwasaki, 2014), but in hummingbirds between half (Scharnke, 1931; Weymouth, Lasiewski & Berger, 1964) to three fourths (Rico-Guevara, 2014) of the tongue lacks muscles, bone, and/or cartilage support. Only a pair of cornified rods at the lingual tip (cf. Weymouth, Lasiewski & Berger, 1964) provides rigidity to the rostral membranous tube-like grooves in hummingbird tongues (Fig. 1 in Rico-Guevara & Rubega, 2011). It is puzzling that this highly specialized food collection tool lacks active control, and it is important to understand how tissue organization and properties alone govern the tongue functioning in nectar collection.

In birds, the diversity in feeding apparatus came with niche specialization; as one of the prime examples, primitive insectivorous hummingbirds entered the nectar-feeding niche and became one of the most specialized nectarivorous vertebrates (Stiles, 1981; Fleming & Muchhala, 2008; Baldwin *et al.*, 2014). Early hummingbirds rapidly acquired a novel bill shape (diverging from the wide and short beak typical of Strisores) that fostered faster morphological diversification than the one experienced by the rest of the birds (Cooney *et al.*, 2017) *via* coevolution with flowers (Stiles, 1981; Weinstein & Graham, 2017) and the development of a wide array of foraging strategies (Feinsinger & Colwell, 1978)

linking exploitative and interference competition to extreme bill structural configurations (e.g., [Rico-Guevara, 2014](#); [Remsen Jr, Stiles & McGuire, 2015](#)). Hummingbirds still catch insects as their main source of protein, exhibiting a variety of hunting tactics (e.g., [Stiles, 1995](#); [Rico-Guevara, 2008](#)) and using their tongues to drag prey they catch near their bill tips to where it can be swallowed (e.g., [Yanega, 2007](#)). Therefore, they use their tongue protrusion abilities for both arthropod intraoral transport and nectar collection (e.g., [Rico-Guevara, 2014](#)). Although hummingbird tongues have been studied for about two centuries ([Martin, 1833](#); [Darwin, 1841](#); [Lucas, 1891](#); [Scharnke, 1931](#); [Weymouth, Lasiewski & Berger, 1964](#); [Hainsworth, 1973](#)), many aspects of their morphology and function still remain to be understood. The tongues of hummingbirds are forked at their tips ([Martin, 1833](#); [Darwin, 1841](#); [Scharnke, 1931](#); [Hainsworth, 1973](#)), ending in two tube-like grooves with fringed edges ([Lucas, 1891](#)). These grooves are exclusively rostral structures and the interior of the tongue base is not hollow ([Scharnke, 1931](#); [Weymouth, Lasiewski & Berger, 1964](#)). There is only one study focusing on the morphology of the entire length of the tongue grooves ([Hainsworth, 1973](#)), which unfortunately is lacking histological details. The most rostral cross section micrograph near the base of the tongue grooves ([Weymouth, Lasiewski & Berger, 1964](#)) shows at least two distinct layers of tissue composing the dorsal and ventral surfaces of the grooves, which are not further described. Studies on nectar feeding in living birds suggest that the functional traits enabling hummingbirds to extract liquid are related to the structural configuration of the tongue tip ([Rico-Guevara & Rubega, 2011](#); [Rico-Guevara, Fan & Rubega, 2015](#)), rather than to active movements of their parts through muscle action. A deeper study of the entire length of hummingbird tongues is essential to understand the underlying architectural properties enabling the observed nectar extraction mechanisms. Because previous studies (e.g., [Weymouth, Lasiewski & Berger, 1964](#); [Zusi, 2013](#)) have described in detail the hyobranchial apparatus, the structure of the root, and the body of the tongue (up to the bifurcation point) in hummingbirds, the present study presents only descriptions of the structures of the rostral portion of the tongue grooves, and in addition, a description of the coupling between the bill and tongue. Understanding the morphology of the rostral portion of the grooves and the bill-tongue fit is crucial to understand the nectar-feeding mechanics in hummingbirds (e.g., [Rico-Guevara, 2014](#)). Furthermore, because the proposed mechanism of nectar collection involves passive transformations of the tongue modulated by the interaction with the bill tips ([Rico-Guevara & Rubega, 2011](#)), it is not enough to understand the morphology of each interacting part, but also it is necessary to study their functioning. Since the tongue transformations are purported as passive, in theory they could be replicated under laboratory conditions thus validating or rejecting previously proposed biomechanical hypotheses (e.g., [Rico-Guevara, Fan & Rubega, 2015](#)).

The aims of this paper are (1) to provide a description of the coupling of the components of the feeding apparatus in hummingbirds –namely the bill-tongue three-dimensional fit, (2) to describe the tissue architecture and surfaces of the tongue tip, (3) to characterize and contextualize the gross and detailed morphology of the hummingbird feeding apparatus both in a comparative (among birds) and ecologically relevant (biomechanics) framework, and (4) to perform experiments to reveal the extent to which the feeding structures



**Figure 1** Depiction of the techniques used to study the hummingbird feeding apparatus. (A) Photograph of a hovering Anna's Hummingbird (*Calypte anna*, courtesy of Robert McQuade) with an overlaid microCT 3D reconstruction of its bill. (B) MicroCT scan coronal cutaway section portraying both the bill and tongue. (C) MicroCT scan reconstruction depicting a section of the tongue. (D) Light microscopy photograph portraying a section of the tongue with the supporting rod at the top. (E) Electron microscopy photograph depicting a section of the tongue wall tissue to show its architecture.

can passively transform to contribute in the nectar collection process (*i.e.*, *post-mortem* experiments). I used histology, transmission and scanning electron microscopy, and high-resolution X-ray computed tomography (microCT) to describe larger anatomical features and the three-dimensional arrangement of the tongue inside the bill (Fig. 1, Video S1). There have been few studies, like the one presented here, that merged microCT, light, and electron microscopy in order to examine morphological features by linking them across disparate spatial scales (Handschuh *et al.*, 2013; Jung *et al.*, 2016).



## MATERIALS & METHODS

I dissected five Ruby-throated Hummingbirds (*Archilochus colubris* Linnaeus, 1758), one Rufous Hummingbird (*Selasphorus rufus* Gmelin, 1788), one Anna's Hummingbird (*Calypte anna* Lesson, 1829), one Short-tailed Woodstar (*Myrmia micrura* Gould, 1854), one White-necked Jacobin (*Florisuga mellivora* Linnaeus, 1758), and one White-tipped Sicklebill (*Eutoxeres aquila* Bourcier, 1847), for a total of ten specimens from six hummingbird species encompassing different clades in the hummingbird phylogeny. Four of the studied species (genera *Archilochus*, *Selasphorus*, *Calypte*, and *Myrmia*) belong to the most specious (high rate of diversification) clade named Bees, and the other two belong to more basal splits and least specious clades; *Florisuga* in the Topazes, and *Eutoxeres* in the Hermits (McGuire et al., 2014). I do not present phylogenetic comparative methods because all imaging techniques were not used for all the species (see below), the results presented here are descriptive, and it is not the aim of this paper (see 'Introduction'). The inferences drawn from each method apply specifically to the species specified in each case, and unless stated in the text I do not present data on interspecific variation. All of the specimens were received as donations (e.g., dying birds that could not be rehabilitated) to the ornithological collections at the Department of Ecology and Evolutionary Biology of the University of Connecticut and at the Instituto de Ciencias Naturales of the National University of Colombia, between January 2012 and August 2013 and coming from several locations in the US, Colombia, and Ecuador. I only dissected (and processed as described below) recently deceased specimens ensuring that the tissues were fresh at the moment of each sample preparation. Once the investigation was concluded, the specimens were deposited in the freezers of the research laboratories at both universities (given the restrictions of the specimen preparations, see below) and are waiting for accession numbers and the development of specific collections for this kind of subjects. Electron microscopy specimens were deposited at the Bioscience Electron Microscopy Laboratory at the University of Connecticut. All activities in this study were reviewed and authorized by the Institutional Animal Care and Use Committee at the University of Connecticut; Institutional Animal Care and Use Committee Exemption Number E09-010. The anatomical nomenclature follows *Nomina Anatomica Avium* (Baumel et al., 1993, also see Homberger, 2017).

### High-resolution X-ray computed tomography (microCT)

I dissected three salvaged specimens, a Ruby-throated Hummingbird, an Anna's Hummingbird, and a Short-tailed Woodstar to scan their heads. Such dissections consisted of separating the head from the rest of the body, which allowed a more expedited and low-cost staining procedure (see below) and a better positioning of the specimens for the scanning process (closer to the X-ray source to achieve higher resolution). To obtain detailed morphological data at the micrometric scale and visualize the tongue soft tissues, I employed a staining protocol with osmium tetroxide (OsO<sub>4</sub>, cf. Metscher, 2009) with the difference that I did not embed my samples in resin, but instead placed them in small vials that could be positioned as close to the X-ray emitter as required for the desired resolution. I opted for osmium instead of iodine (e.g., Lautenschlager, Bright & Rayfield, 2014) because, although they both seem to bind to lipids (Bozzola & Russell, 1999; Gignac & Kley, 2014),

osmium stabilizes tissue proteins, which then do not coagulate during dehydration with alcohol (Hayat, 2000). The heads were kept in 10% neutral buffered formalin and fixed with a solution containing 2.5% (wt/vol) glutaraldehyde and 2% (wt/vol) formaldehyde in 0.1 M sodium cacodylate trihydrate buffer (pH 7.4 adjusted with NaOH) for 8 h at 4 °C. After two washes in distilled water, the heads were fixed/stained with 2% (wt/vol) OsO<sub>4</sub> in 0.1 M cacodylate buffer water for 4 h at 4 °C. Samples were washed three times in distilled water (20 min apart at 4 °C) and then dehydrated in a graded series of ethanol solutions. The specimens were stored in 100% ethanol at 4 °C and scanned at The University of Texas High-Resolution X-ray Computed Tomography Facility. Scans were performed at 70 kV and 10 W, with Xradia 0.5 and 4X objectives, and 1 mm SiO<sub>2</sub>, or no filter. Specimens were scanned in three parts, scans were stitched using Xradia plugins, and voxel size was between 15.5 and 5.2 μm. I obtained 16bit TIFF images that were reconstructed by Xradia Reconstructor, and the total number of slices per specimen was between 2,223 and 2,854, with scan times between 4 and 7 h. Using the data from the microCT scans I digitally decoupled the feeding apparatus components (segmenting in Avizo©) and constructed three-dimensional models to study the bill and tongue match.

### Histological preparations

I dissected two Ruby-throated Hummingbirds to extract their tongues, which were cut into ~3-mm long sections and fixed with 1.5% (wt/vol) glutaraldehyde—1.5% (wt/vol) paraformaldehyde in standard buffer (0.1 M HEPES, 80 mM NaCl, 3 mM MgCl<sub>2</sub>, pH 7.4 adjusted with NaOH) for a total of 9 h at 4 °C with one change into fresh fixative after one hour. The sections were then fixed in a solution of 1% OsO<sub>4</sub>—0.8% potassium ferricyanide—0.1 M sodium cacodylate—0.375 M NaCl for 2 h at 4 °C and then washed in distilled water. The sections were dehydrated in a graded series of ethanol solutions, and embedded in epoxy resin (a mixture of Embed812, Araldite 502 and DDSA, blocks polymerized at 60 °C for 48 h). I obtained semi-thin cross sections (1 μm) that were stained with methylene blue/azure II (1:1) followed by counterstaining with fuchsin for light microscopy. Photomicrographs were captured using a JVC High Resolution CCTV digital camera on an Olympus BX51 compound microscope at different magnifications (up to 1,000x). I used Auto-Montage software (Syncroscopy Inc.) to compile images of multiple optical planes, thereby obtaining pseudo-planar fields of view with improved visualization of the tissue structures.

### Transmission electron microscopy (TEM)

I used one Ruby-throated Hummingbird for TEM. Using some of the fixed and embedded sections (epoxy resin processed in a Microwave Tissue Processor, Pelco Biowave Pro) of the tongue from the histological preparations, I obtained thin (80-nm) cross sections using a diamond knife on a Leica Ultracut UCT Ultramicrotome. The sections were put on Formvar support films for TEM and stained with either 2% uranyl acetate (UA) and lead citrate (LC, Reynolds, 1963), UA LC and RuO<sub>4</sub> vapors, or RuO<sub>4</sub> vapors only (Xue, Trent & Osseo-Asare, 1989). These sections were then imaged at the Bioscience Electron Microscopy Laboratory at the University of Connecticut, with a FEI Tecnai G2 Spirit

BioTWIN transmission electron microscope at an accelerating voltage of 80 kV and at direct magnifications up to 120,000 $\times$ .

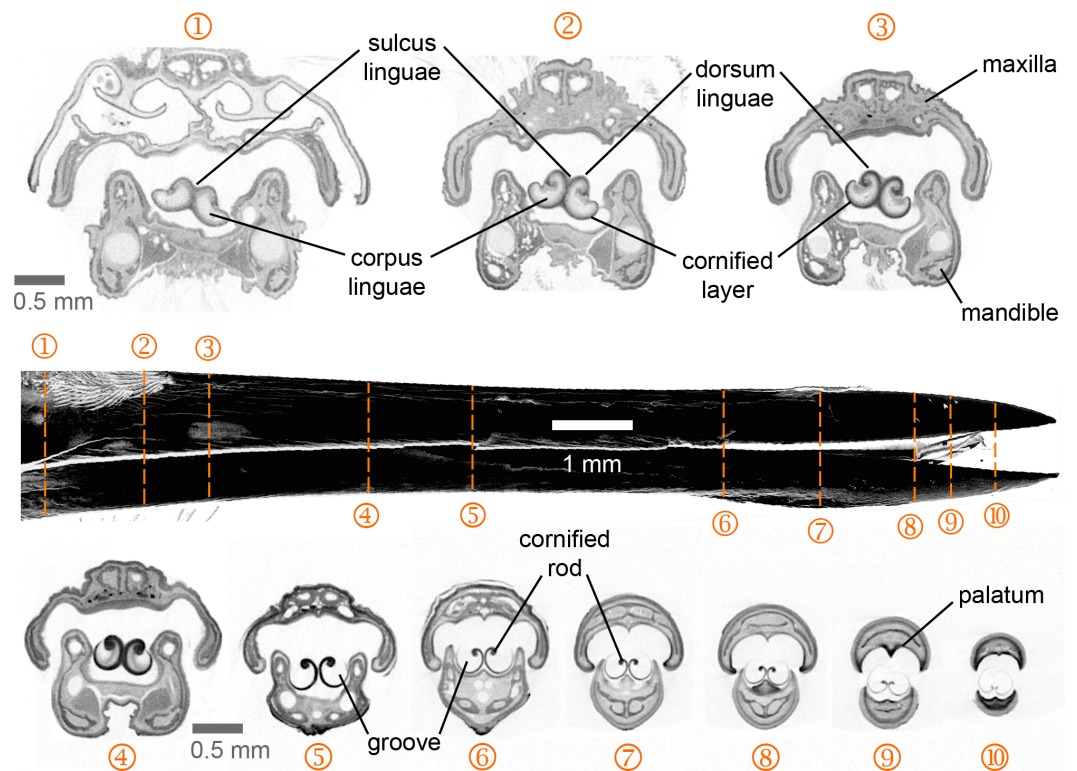
### Scanning electron microscopy (SEM)

I dissected one Ruby-throated Hummingbird and one Rufous Hummingbird to extract their tongues. The tongues were flattened with microslides and fixed with a solution containing 2.5% (wt/vol) glutaraldehyde and 2% (wt/vol) paraformaldehyde in 0.1 M sodium cacodylate trihydrate buffer (pH 7.4 adjusted with NaOH) for 8 h at 4 °C. After six washes (30 min apart) with the 0.1 M cacodylate buffer, the tongues were fixed/stained with 2% (wt/vol) OsO<sub>4</sub> (2.5 ml) in 0.1 M cacodylate buffer (1.7 ml) + distilled water (0.8 ml) for 8 h at 4 °C. The tongues were cleaned by washing them three times in the cacodylate buffer and then dehydrated in a graded series of ethanol solutions. For all of these washes I used jets of fluid (using droppers immersed in the liquids) to ensure that the tongues were free of debris (and remaining nectar) in both dorsal and ventral surfaces; I did not scrape the tongue surfaces in order to keep them intact for posterior visualization. The first tongue was dried with a critical point dryer (Polaron E3000) for 2 h. Unfortunately, critical point drying (CPD) caused the edges of the tongue in the rostral region (where it forms the grooves) to spiral inward while drying, and only a small proportion of the dorsal surface of the tongue was visible after CPD. For the second tongue, I opted to use nylon mesh biopsy capsules and tissue cassettes to keep the tissue from spiraling inward. I inserted the tissue between layers of filter paper (chemically stable and allows adequate fluid exchange) to prevent mechanical damage from the mesh. By employing SEM, I could visualize and photograph the regions of interest, including equal access to both dorsal and ventral surfaces.

After CPD, I sputter coated (Polaron E5100) the tongues with gold and palladium, and attached them to aluminum SEM stubs using double-sided carbon tape, coated the caudal ends of the tongues with silver paint, and connected them to the aluminum stubs in order to reduce charging effects. I imaged the tongues at the Bioscience Electron Microscopy Laboratory at the University of Connecticut, with a Zeiss DSM982 field emission scanning electron microscope operated at an accelerating voltage of 2 kV and at direct magnifications up to 50,000 $\times$ .

### Ex-vivo experiments

I dissected one Ruby-throated Hummingbird to examine tongue-nectar interactions *post-mortem*. Under an Olympus SZX-12 dissecting microscope, I attached a Micro-Manipulator Model FX-117 (Electron Microscopy Sciences©) *via* surgical micro clamps to the epibranchial bones of the hyobranchial apparatus (Fig. S1). I held the skull in place with articulating arms coupled to a soft “helmet” made out of a polyvinyl chloride sheet and an Irwin© Quick-Grip Mini Handi-Clamp with swiveling clamping pads provided with longitudinal and transversal furrows that matched the hummingbird’s bill basal diameter without compressing it. At the tip of the bill I positioned a Mitutoyo© Digimatic Digital Caliper connected to a laptop to compare the compression of the tongue by the bill tip in this artificial setting and match it with previous estimates in living hummingbirds



**Figure 2** Selected feeding apparatus cross sections (1–10) from a microCT scan of an Anna's Hummingbird (*Calypte anna*). Black structure in the middle of the figure is a lateral view of the bill from the reconstructed scan, and the dashed orange lines crossing it correspond to the numbered cross sections. Upper and lower bills (rhinotheca and gnathotheca are the keratinous sheaths of the maxillary and mandibular bones respectively) on each section appear separated but in a living hummingbird they can be fully coupled when the bill is shut, leaving virtually no space outside the tongue grooves in the rostral region. Relevant structures for understanding the feeding apparatus functioning are labeled (see text).

(Rico-Guevara, Fan & Rubega, 2015). The end result was the ability to precisely control tongue flattening and protrusion (Video S2). I attached a second Micro-Manipulator to a reservoir filled with artificial nectar (18.6% sucrose concentration) in order to control the bill tip to nectar surface distance without moving the fixed head. Lastly, I filmed the tongue-nectar interactions by coupling a high-speed camera (TroubleShooter HR), running up to 1,260 frames/s (1,280 × 512 pixels), to the dissecting microscope.

Activities were reviewed and authorized by the Institutional Animal Care and Use Committee at the University of Connecticut; Exemption Number E13-001.

## RESULTS

### High-resolution X-ray computed tomography (microCT)

I present the first complete cross-section series of a hummingbird feeding apparatus. I started with the most caudal section at the nasal operculum (Fig. 2, cross section [XS] 1) where the tongue is dorso-ventrally flattened, and the tongue body (*corpus linguae*) has started to divide medially due to an ingrowth (*sulcus linguae*) of the dorsal and ventral epithelia (Fig. 2, XS 1; cf. XS 11 in Weymouth, Lasiewski & Berger, 1964). The tongue body

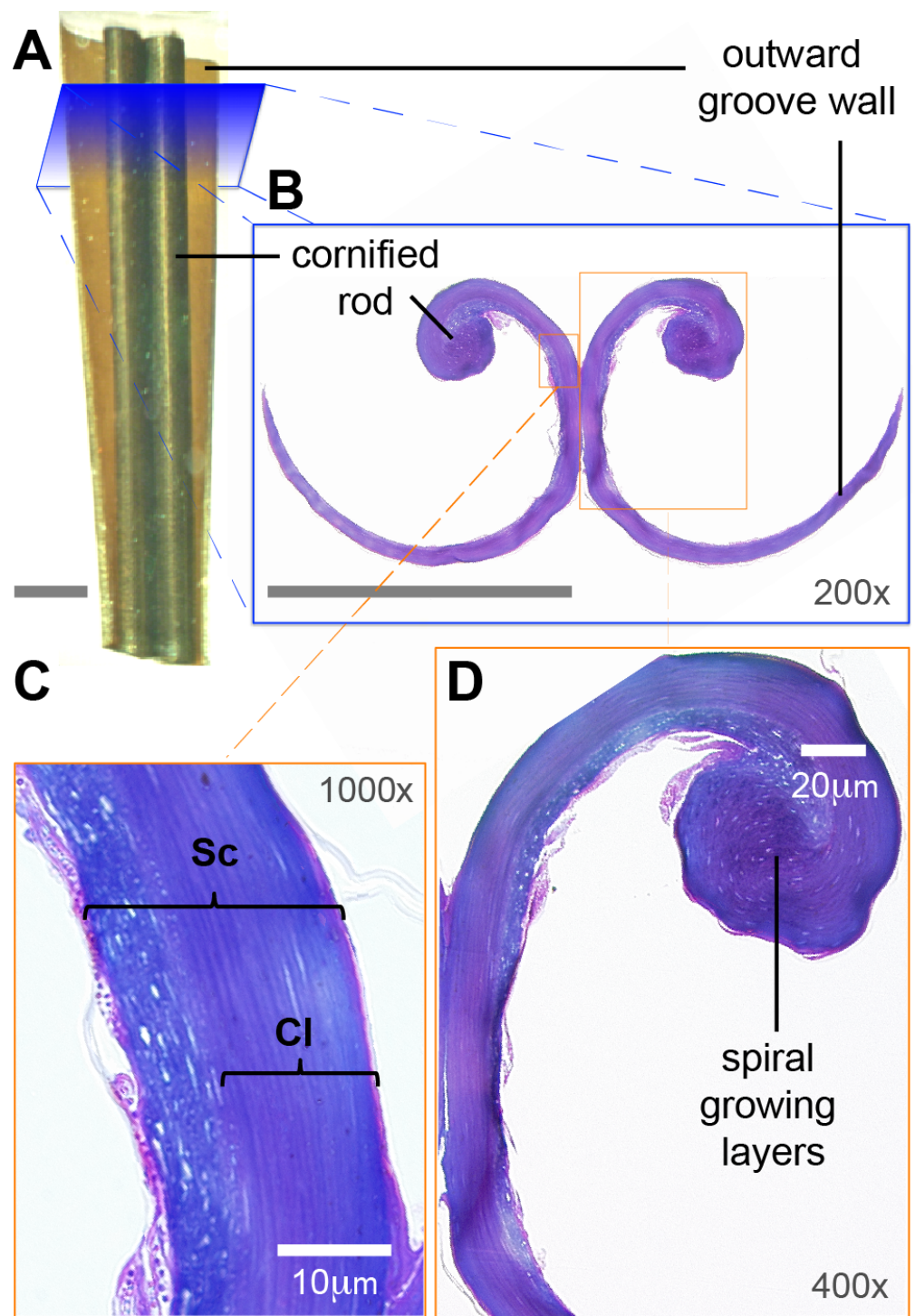
in hummingbirds encompasses the tongue from a distinct base, at the joint between the *basihyale* and the *paraglossum*, to the rostral grooves. I do not present a description of the structure of the lingual body in this paper given that this has been detailed previously (Weymouth, Lasiewski & Berger, 1964). At XS 2 there is a dark layer of cornified tissue almost completely surrounding the lingual body. Such layers become thicker at the ingrowth region and eventually connect, when moving rostrally through cross sections (Fig. 2, XS 2–5), effectively dividing the tongue body (cf. XS 13 in Weymouth, Lasiewski & Berger, 1964) and giving rise to a bifid tongue. At XS 3 the semi-cylindrical configuration characteristic of the tongue grooves is already conspicuous (cf. XS 14 in Weymouth, Lasiewski & Berger, 1964).

At XS 4 it is apparent that the tissue inside the lingual body chambers is thinner, leaving an empty space dorso-laterally (cf. XS 15–17 in Weymouth, Lasiewski & Berger, 1964). At this section, the *dorsum linguae* is made of cornified tissue and it forms a pair of dorsal cornified rods of the lingual tip (cf. Weymouth, Lasiewski & Berger, 1964). These dorsal rods become thicker and more robust when moving rostrally through cross sections (Fig. 2, XS 2–5), probably because they are the sole structural support of the rostral half of the tongue. By XS 5 there is no tissue inside the cornified semi-cylindrical grooves, and the two sides of the lingual body are completely separated (i.e., bifurcated tongue). There is almost no change between the tongue appearance and size between XS 5 and 6, which is about 3 mm corresponding to about half of the total groove length. From XS 6 to 8 there is no ostensible change in the tongue shape besides an overall reduction in size (~25%). The rostral portion of the tongue is characterized by a reduction of the rods and a thinning in the cornified tissue comprising the grooves (Fig. 2, XS 9–10). It is worth noting that from XS 1 to 4 it is evident how the tongue fills the internal buccal spaces (when the bill is shut), leaving only a small space dorso-laterally. Such space matches the position of tongue base projections (Scharnke, 1931; XS 2 in Weymouth, Lasiewski & Berger, 1964). A reduction in the internal space outside the grooves and a tighter coupling between bill internal walls (oropharyngeal roof, or *palatum*, and oropharyngeal floor, or interramal region) and tongue shape is evident in the rostral portion of the feeding apparatus (Fig. 2, XS 5–10). A more in-depth description of the bill structures, such as the salivary ducts openings in the oropharyngeal floor (Fig. 2, XS 7), will be provided elsewhere.

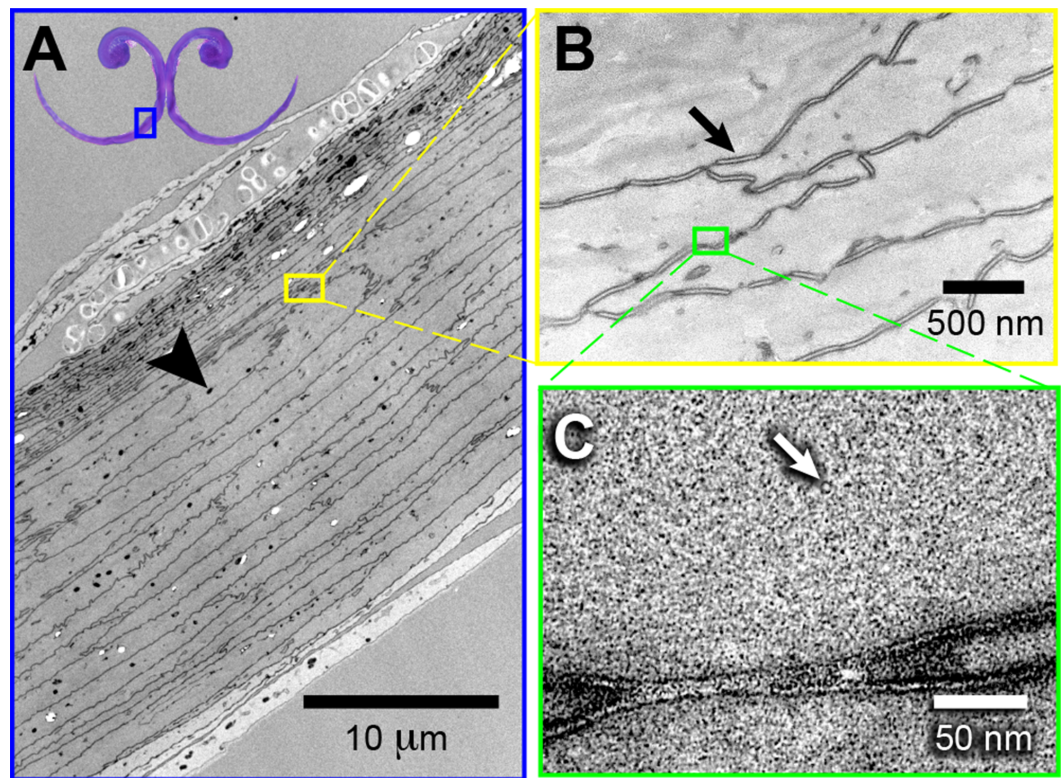
### Histology and electron microscopy

I focused on the rostral half of the tongue (e.g., Fig. 3A) to complement the work of Weymouth, Lasiewski & Berger (1964) that focused on the caudal half. At its basal region, the tongue is a cylindrical structure containing bones, muscles, vessels, blood cells, loose connective tissue, nerves, and sensory structures (e.g., taste buds), all surrounded by stratified squamous epithelium (Weymouth, Lasiewski & Berger, 1964). Moving rostrally, the tongue shape transitions into two distinct bean-shaped chambers running parallel to each other (Fig. 2, XS 1; Weymouth, Lasiewski & Berger, 1964), the paired *paraglossum* becomes cartilaginous and thins until it finally disappears along with the muscles, vessels, nerves, and other abovementioned structures, whereas the stratified squamous epithelium becomes thicker and a strongly cornified layer appears in between two layers of epithelium (analogous to the human nail matrix covered by the cuticle, Fig. 2, XS 2–3, 3C; Weymouth,





**Figure 3** Low-magnification morphology of the rostral half (grooves) of a Ruby-throated Hummingbird (*Archilochus colubris*) tongue. (A) Section of the tongue embedded in resin; dorsal view oriented with the caudal end of the section at the top. (B) Corresponding cross section (light microscope) showing the semi-cylindrical configuration of the grooves. The cornified rod of the lingual tip and the outward (lateral) groove wall are labeled for reference. Unlabeled scale bars = 250  $\mu$ m. (C) Histological details of the groove wall showing the *stratum corneum* (Sc), the strongly cornified layer (Cl). (D) Histological details of the cornified rod and the seemingly germinative layers remains.



**Figure 4** High-magnification morphology of a cross section at the rostral half (grooves) of a Ruby-throated Hummingbird (*Archilochus colubris*) tongue. (A) Transmission electron micrograph showing the difference in layer composition (more densely packed near the dorsal surface), and potential melanin (black arrow head) granules. Vapor-stained with  $\text{RuO}_4$ . (B) The cellular outlines are connected corneodesmosomes (black arrow). Stained with uranyl acetate (UA), lead citrate (LC), and  $\text{RuO}_4$  (vapors). (C) Keratinous matrix showing the microfibrils (white arrow). Stained with UA, LC, and  $\text{RuO}_4$ .

*Lasiewski & Berger, 1964*). In the rostral half of the tongue all the connective tissue is absent, the bean-shaped chambers become hollow, and the remaining cornified epithelium (*stratum corneum*) is shaped like two extended ‘commas’ mirroring each other and forming the paired grooves or semi-cylinders at the tongue tip (Fig. 2, XS 4–10, 3B; *Weymouth, Lasiewski & Berger, 1964; Ortiz-Crespo, 2003*). The growing tissue seems to be abundant at the base of the grooves (cf. Fig. 2; *Weymouth, Lasiewski & Berger, 1964*), but to disappear in the rostral portions with few remaining cells at the interior of the cornified rod (Fig. 3D).

I found elliptical-to-circular dark corpuscles distributed evenly throughout the tongue tissue (black arrow head, Fig. 4A). The cell boundaries are continuous lines of corneodesmosomes (e.g., black arrow, Fig. 4B). I found structures of  $\sim 35$  Å diameter that possibly are microfibrils (e.g., white arrow, Fig. 4C). Regarding the different staining methods, I found that staining with uranyl acetate and lead citrate provided the best imaging of the elliptical dark corpuscles and the most external layers of keratin, especially in the dorsal surface of the grooves (Fig. S2). However, vapor-staining with  $\text{RuO}_4$  offered the best visualization of the corneo-desmosomes necessary to study the cell architecture (Fig. S2).

In the grooved (rostral) half of the tongue, two layers of the *stratum corneum* can be distinguished: a thicker one underlying the ventral (convex) surface of the grooves, which I refer to as ‘cornified layer’, and a thinner one underlying the dorsal (concave) surface of the grooves (Fig. 3B). The cornified layer is made of larger cells, it is less densely packed, and it contains less granules than the layer closer to the dorsal surface (Fig. 4A). This latter layer may contain some flattened granular-cornified cells but I do not refer to it as *stratum granulosum* because that name is mostly applied to mammal tissues (Baumel et al., 1993). It is plausible that some of the germinative layers of this keratinized stratified squamous epithelium could be found at the basal portions of the dorsal rods (Fig. 3B), but most of it is restricted to the caudal half of the tongue (Weymouth, Lasiewski & Berger, 1964).

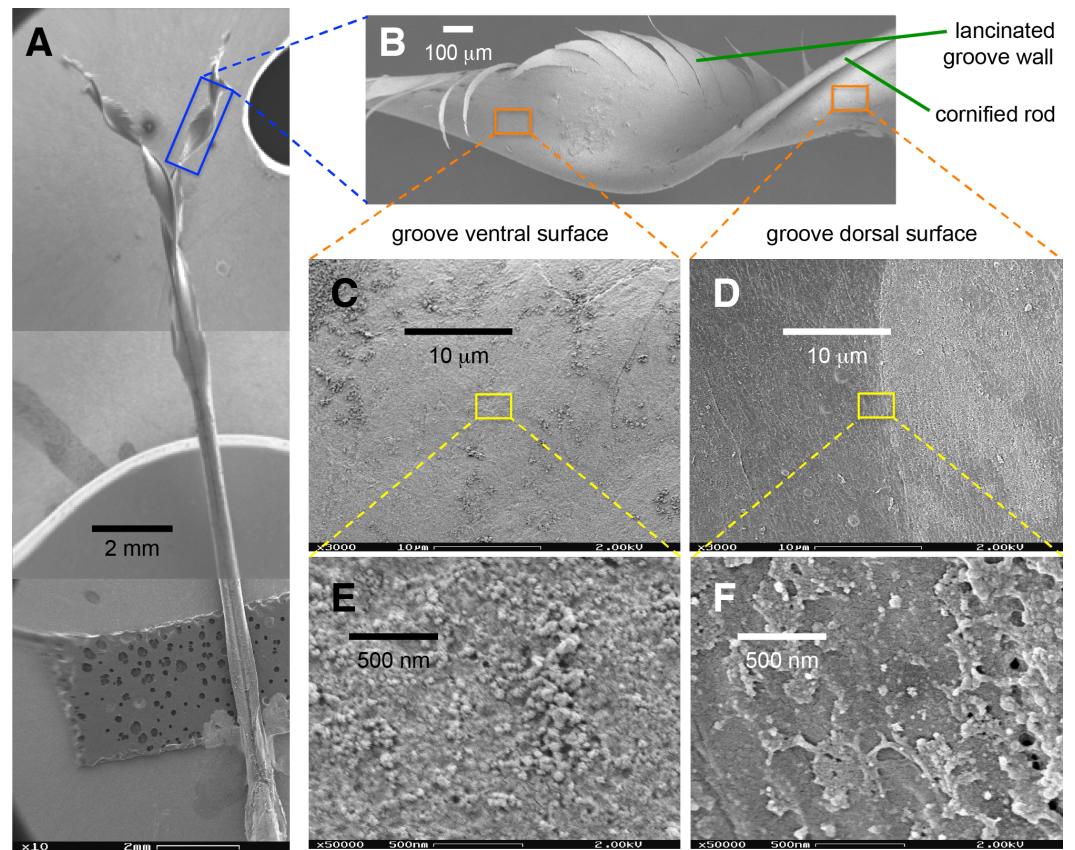
Probably related to the abovementioned differences in underlying tissue, I found qualitative differences between the dorsal and ventral surfaces of the tongue grooves (Fig. 5). These surfaces were cleaned in the same manner (see Methods: SEM), therefore differential accumulation of nectar or dirt residue does not appear to be a confounding factor. In addition, given that the accelerating voltage can alter the level of surface detail visualized, I kept constant 2 kV for all the comparisons. While capturing the EM images, I tried to compare corresponding points on the dorsal and ventral surface, but I did not perceive noticeable differences on the tongue surfaces depending on the relative position on the groove wall (e.g., relative distance to the cornified rod, or at the lancinated portions, Figs. 5A and 5B). At the 10- $\mu$ m scale the ventral tongue groove surface (Fig. 5C) seems to have more granulated regions in comparison with the dorsal side that appears smoother (Fig. 5D). Furthermore, at the 500-nm scale the ventral surface (Fig. 5E) presented a rougher aspect than the dorsal surface (Fig. 5F).

### **Ex-vivo experiments**

I recorded expansive filling (*sensu Rico-Guevara, Fan & Rubega, 2015*) in the *post-mortem* experiments (Fig. S1, Video S2). This observation indicates that physical (structural) rather than muscular forces are responsible for the expansion and filling of the tongue. I flattened the grooves by closing the bill tips and leaving only a small aperture to extrude the tongue through (see methods), reproducing previous observations in free-living birds (Rico-Guevara & Rubega, 2011; Rico-Guevara, Fan & Rubega, 2015), and registered that the flattened grooves expanded spontaneously upon contact with nectar in tongues of deceased specimens (Video S3). Additionally, I observed that the separation of the tips and the relaxation of the fringed regions occurred in *post-mortem* experiments (Video S4). Consequently, nectar trapping (*sensu Rico-Guevara & Rubega, 2011*) would be the first step of the fluid collecting system and is immediately followed by expansive filling. I hypothesize that the main force driving the expansive process and therefore the filling of the tongue with nectar is the elastic energy that can be stored in the cornified groove walls.

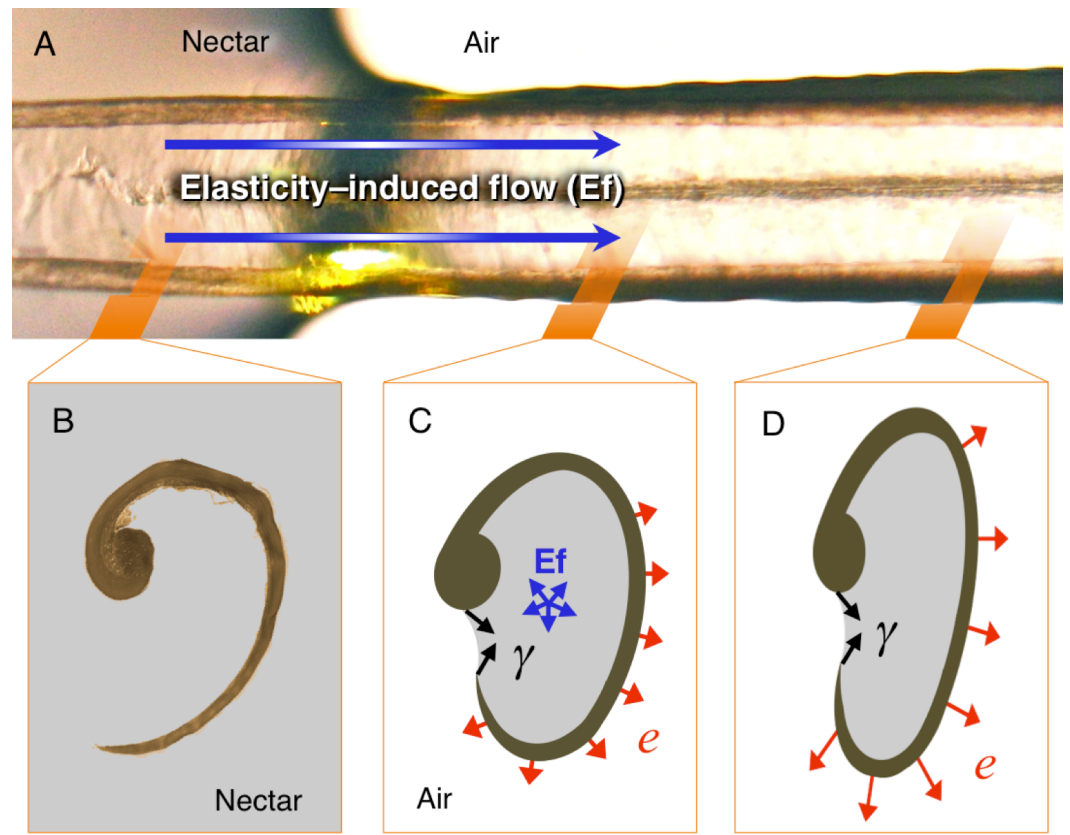
I explain the hypothesis as follows: (1) The process starts when the tongue is dorsoventrally compressed upon protrusion; when the tongue is extruded, only a thin layer of nectar remains inside the grooves. Such a thin layer acts as an adhesive (Stephan adhesion) maintaining the dorsoventrally flattened (elliptical) configuration of the grooves even after they pass the extrusion point (bill tip). The attractive forces between the nectar and





**Figure 5** Scanning electron microscopy of a Rufous Hummingbird (*Selasphorus rufus*) tongue. (A) Overview of the entire tongue, although my observations focused on the rostral half (grooves). (B) Close up of a longitudinally twisted section of a tongue groove, indicating the cornified rod of the lingual tip and the lacerations of the groove wall. (C) Medium magnification (3,000 $\times$ ) micrograph of the ventral surface of the tongue. (D) Medium magnification (3,000 $\times$ ) micrograph of the dorsal surface of the tongue. (E) High magnification (50,000 $\times$ ) micrograph of the ventral surface of the tongue. (F) High magnification (50,000 $\times$ ) micrograph of the dorsal surface of the tongue. Note that when the grooves adopt their natural semi-cylindrical configuration, the ventral surface corresponds to the outer (convex) side of the groove walls, and the dorsal surface corresponds to the inner (concave) side of the groove walls.

the tongue (adhesion, cohesion, and surface tension) are able to resist the elastic energy stored in the grooves' walls (cornified layers), and thus keep the grooves flattened. This stable flattened configuration is conserved during the trip of the tongue across the air space between the bill tip to the nectar pool. In the dorsal portion of the tongue, where the groove's inside upper edge meets the rod, the free (outer) edge of the groove is prevented from rolling outward by a narrow sheet of nectar joining it to the rod. The surface tension at this exposed nectar sheet keeps the grooves "zipped up" by preventing air from entering the groove itself. Surface tension at the tip of the tongue also keeps the grooves stuck to each other, forming a unitary structure. (2) Once the tongue passes the compression point at the bill tips, there is a slight expansion in the tongue grooves (because of the cessation of compressive forces). The expansion of the grooves is arrested at the point in which the attractive forces between the tongue walls and the nectar balance out the elastic



**Figure 6** Elasticity-induced flow hypothesis. (A) Dorsal photograph of a Short-tailed Woodstar (*Myrmia micrura*) tongue tip just after contacting the nectar surface. Given the flattened configuration of the portions of the grooves outside the nectar, there would be elastic energy stored which induces inward flow. (B) Cross section (light microscope photograph) of a hummingbird tongue in its “relaxed” configuration inside the nectar. (C) Hypothetical cross section showing the elasticity-induced flow ( $E_f$  in blue), the surface tension ( $\gamma$  in black), and the elastic potential energy ( $e$  in red). (D) Hypothetical cross section for a portion of the tongue not yet affected by the expansive flow. Strong nectar-wall adhesion keeps the groove in a flattened configuration, and surface tension along the groove slit prevents bubble infiltration. Elastic potential energy is larger when the bending of the wall is more pronounced; yielding a pressure differential that pumps the nectar into each groove.

forces of the grooves’ walls. This creates an initial transient equilibrium that maintains the flattened configuration (cf. Rico-Guevara, Fan & Rubega, 2015). (3) Once the tongue tip contacts the nectar surface, the free supply of fluid eliminates the surface tension that was holding the grooves together, allowing the area of the grooves that is inside the nectar to open (cf. Rico-Guevara & Rubega, 2011). This opening of the ends of the grooves allows the nectar molecules from the nectar pool to start interacting with the nectar molecules inside the grooves (i.e., elasticity-induced flow, Fig. 6). On the dorsal surface of the length of the grooves still outside the nectar pool (more proximal to the bird’s mouth), the surface tension of the fluid sheet between the rods and the groove walls holds the grooves in the rolled, flattened position. (4) Molecules of liquid entering the tongue grooves, at the boundary where the tongue enters the nectar pool, start moving proximally through the grooves, creating a jet of fluid that fills the grooves following their expansion (cf.



*Rico-Guevara, Fan & Rubega, 2015*). This continued destabilization of the initial transient equilibrium causes the area of the grooves outside the nectar to expand which in turn causes them to fill, creating a positive feedback that forces the grooves open along their entire length. This creates a filling front wave because the expansive process happens from the point of contact with the nectar backwards (Fig. 6). (5) The expansion stops when most of the potential elastic energy is released (and the grooves are fully reshaped into their cylindrical configuration) and when the remaining elastic energy is counteracted by the surface tension at the zipped dorsal slit (cf. *Rico-Guevara & Rubega, 2011*). At this point the grooves have achieved their maximum capacity, and they are completely filled with nectar.

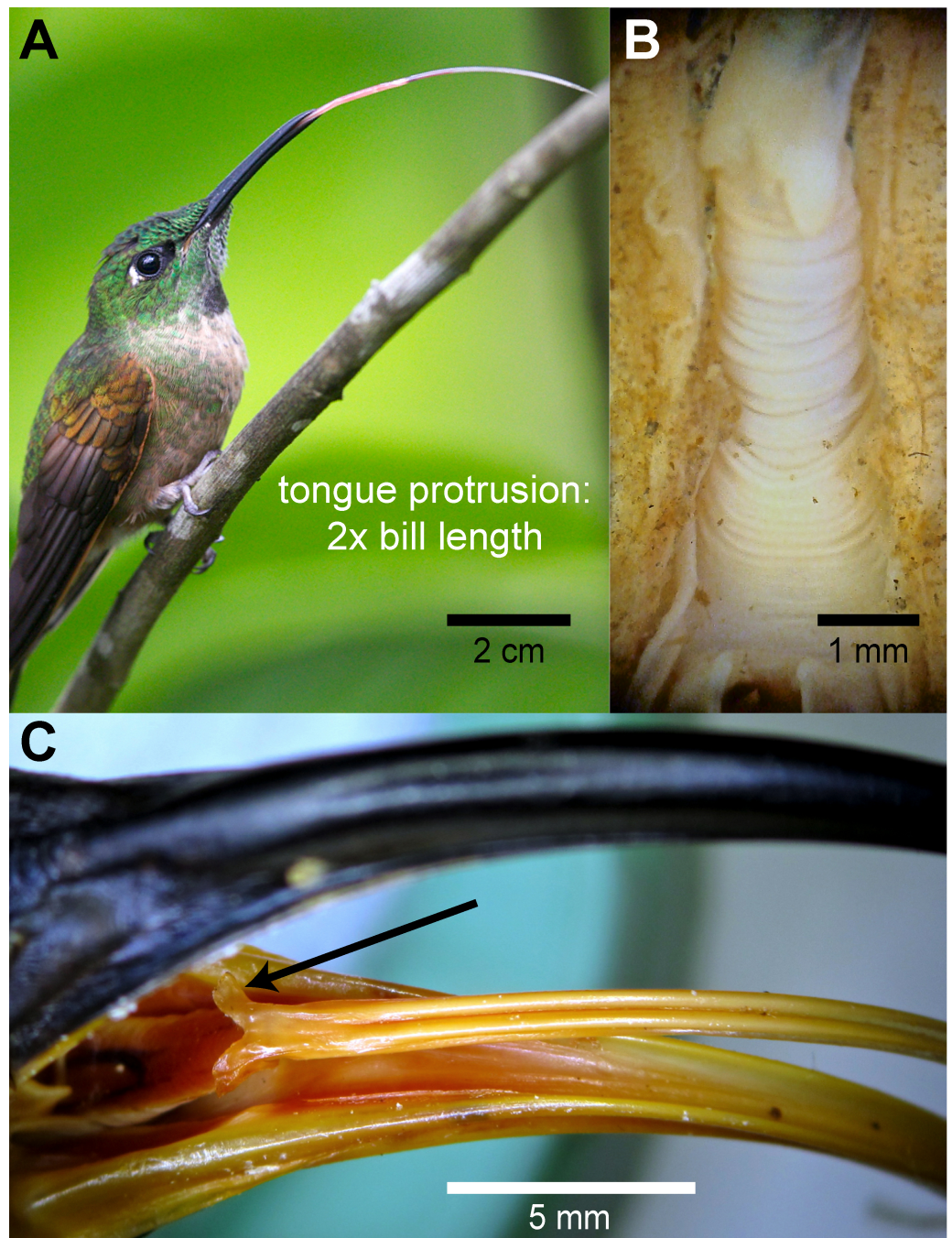
### Notes on gross tongue morphology relevant to feeding in hummingbirds

Hummingbird tongues may look as a fishing line due to their extreme slenderness, but are truly complex structures well adapted to particular tasks. Hummingbirds can extend their tongues beyond their bill tips up to about two times the bill length (e.g., Fig. 7A), given that most hummingbird tongues are only slightly longer than their bills (Fig. 2, *Rico-Guevara, 2014*), the tongue base can be extended past the bill tip (transition visible in Fig. 7A). This remarkable lingual protraction can be achieved by the rostral displacement of the elongated hyoid apparatus (e.g., Video S5), and hummingbirds can protrude their tongues with their bills closed because of the presence of an elastic envelope between the larynx and the tongue base (e.g., Fig. 7B), which allows lingual protraction without dragging the trachea inside the bill. Lingual protrusion serves to increase the range of the tongue tips, and also to reach the bill tips with the tongue base, which is important for the intraoral transport of the food. At the tongue base, hummingbirds present two caudal-facing flaps without conical papillae (e.g., Fig. 7C), which may aid during intraoral transport. I did not find papillae neither through macroscopical observations of the entire tongue nor through microscopical observations at the rostral regions.

## DISCUSSION

### Gross morphology of hummingbird tongues

Hummingbird tongues entirely lack papillae, a rare condition in vertebrate tongues (*Schwenk, 2000; Iwasaki, 2002*) and even among birds (review in *Erdoğan & Iwasaki, 2014*). Avian lingual papillae are involved in manipulation of solid food (e.g., prey apprehension, holding, cutting, filtering, shelling, *Iwasaki, Asami & Chiba, 1997; Kobayashi et al., 1998; Jackowiak et al., 2010; Jackowiak et al., 2011; Guimarães et al., 2014; Skieresz-Szewczyk & Jackowiak, 2014*) and caudal intraoral transport of solid items (review in *Parchami, Dehkordi & Bahadoran, 2010*). Hummingbirds have remarkable feeding modes; first, about half of their diet (cf. *Stiles, 1995*) is composed of floral nectar that is collected inside the tongue grooves; this process does not involve adhesion of the liquid to intra-papillar spaces, as in the case of bats (*Birt, Hall & Smith, 1997; Harper, Swartz & Brainerd, 2013*) or lorikeets (*Homberger, 1980*, p. 41). Second, the other half of their diet (cf. *Stiles, 1995*) consists of arthropods, which most hummingbirds capture by flycatching (*Stiles, 1995; Rico-Guevara, 2008*). *Yanega & Rubega (2004)* showed that the flycatching mechanism in



**Figure 7** Gross morphology of hummingbird tongues. (A) Photograph of a Fawn-breasted Brilliant (*Heliodoxa rubinooides*) stretching its tongue apparatus (courtesy of Jim DeWitt –Frozen Feather Images). (B) Dissecting microscope photograph of the throat region in a dissected specimen of a White-necked Jacobin (*Florisuga mellivora*) showing the accordion-like structure or *tuba elastica* in its retrieved position. The *tuba elastica* can contain the basihyal and ceratobranchial bones allowing them to move independently from the surrounding tissue and permitting the extreme protraction of the tongue. (C) Macro photograph of the bill and tongue-base of a White-tipped Sicklebill (*Eutoxeres aquila*). Note the *alae linguae* at the base of the tongue (black arrow), which are enlarged in comparison to other hummingbirds.

hummingbirds involves an expansion of the gape (see also [Smith, Yanega & Ruina, 2011](#)) and most of the aerial prey are captured at the base rather than at the tip of the bill; therefore, little or no intraoral lingual transport is necessary. Other hummingbirds, especially from the subfamily Phaethornithinae ('hermits'), consume mostly substrate-captured prey (e.g., spiders, [Stiles, 1995](#)). This is also the case of reproductive females of many species across the family, which have higher protein requirements ([Rico-Guevara, 2008](#); [Hardesty, 2009](#)). In the process of consuming substrate prey or prey that are generally captured near the bill tip, hummingbirds, as other birds, can use inertial transport (cf. [Mobbs, 1979](#); catch and throw, [Zweers, Berge & Berkhoudt, 1997](#); or cranioinertial feeding, [Tomlinson, 2000](#); [Gussekkloo & Bout, 2005](#); also called ballistic transport, [Baussart et al., 2009](#); [Baussart & Bels, 2011](#); [Harte et al., 2012](#)) while flying, or lingual transport ([Yanega, 2007](#)). Hummingbirds have evolved the ability to protract their tongues past the bill tips to feed on nectar, but the purpose of the extreme protrusion that they can achieve (e.g., [Fig. 7A](#)) is still a mystery. Thus, hummingbirds can reach the rostral portions of their bills with the tongue base (to perform lingual transport for instance), without dragging their tracheae rostrally, because of the development of an accordion-like tube (*tuba elastica*, [Zusi, 2013](#)) between the epiglottis and the tongue base which can contain a large part of the hyobranchial apparatus during tongue protrusion (cf. [Weymouth, Lasiewski & Berger, 1964](#); [Fig. 7B](#)). This *tuba elastica* appears to be a modification of the fibrous attachment between the rostral process of the cricoid cartilage and the rostral process of the *basihyale* ([Soley, Tivane & Crole, 2015](#)). Hummingbirds' lack of lingual papillae and protrusion abilities may be explained by their arthropod hunting and consumption strategies, as well as their liquid food collecting method: grooves with smooth surfaces are easier to extrude nectar from, and protrusible tongues not only to reach but also to transport food intraorally.

Besides lacking papillae, hummingbird tongues are also unique because of their *alae linguae* (cf. [Weymouth, Lasiewski & Berger, 1964](#); [Homburger, 2017](#)), which are flattened projections at the base of the tongue ([Fig. 7C](#)). These two flaps are located and oriented at the same place and in the same general direction as the papillary crest in other birds. Nevertheless, these structures do not present caudally directed conical papillae, as is usual in avian tongues (e.g., [Erdoğan & Alan, 2012](#); [Erdoğan, Pérez & Alan, 2012](#)). In comparison to the width of the tongue, these flaps are greatly elongated laterally in Sicklebills (*Eutoxeres*, [Fig. 7C](#)), which have strongly decurved bills. These flaps are thin and flexible at touch, as well as positioned dorso-laterally forming a V-shaped structure. These flaps in hummingbirds have no parallel among nectar-feeding birds ([Lucas, 1894](#); [Scharnke, 1932](#); [Scharnke, 1933](#); [Rand, 1961](#); [Rand, 1967](#); [Bock, 1972](#); [Morioka, 1992](#); [Pratt, 1992](#); [Downs, 2004](#); [Chang et al., 2013](#)), or birds in general (e.g., [Erdoğan & Alan, 2012](#); [Erdoğan, Sağsöz & Akbalik, 2012](#); [Erdoğan, Pérez & Alan, 2012](#); [Erdoğan & Iwasaki, 2014](#); [Erdoğan & Pérez, 2015](#)). I hypothesize that the *alae linguae* could aid to move the nectar backwards during its intraoral transport ([Rico-Guevara, 2014](#)) and to drag proximally arthropod prey that are caught at different places along the bill length (cf. [Yanega, 2007](#)). In terms of general shape, hummingbird tongues are not triangular and dorsoventrally flattened as in most birds (review in [Erdoğan & Pérez, 2015](#)), instead, as it is the case in other nectarivorous birds, these tongues are cylindrically shaped (e.g., [Bock, 1972](#); [Downs, 2004](#); [Chang et al., 2013](#)).

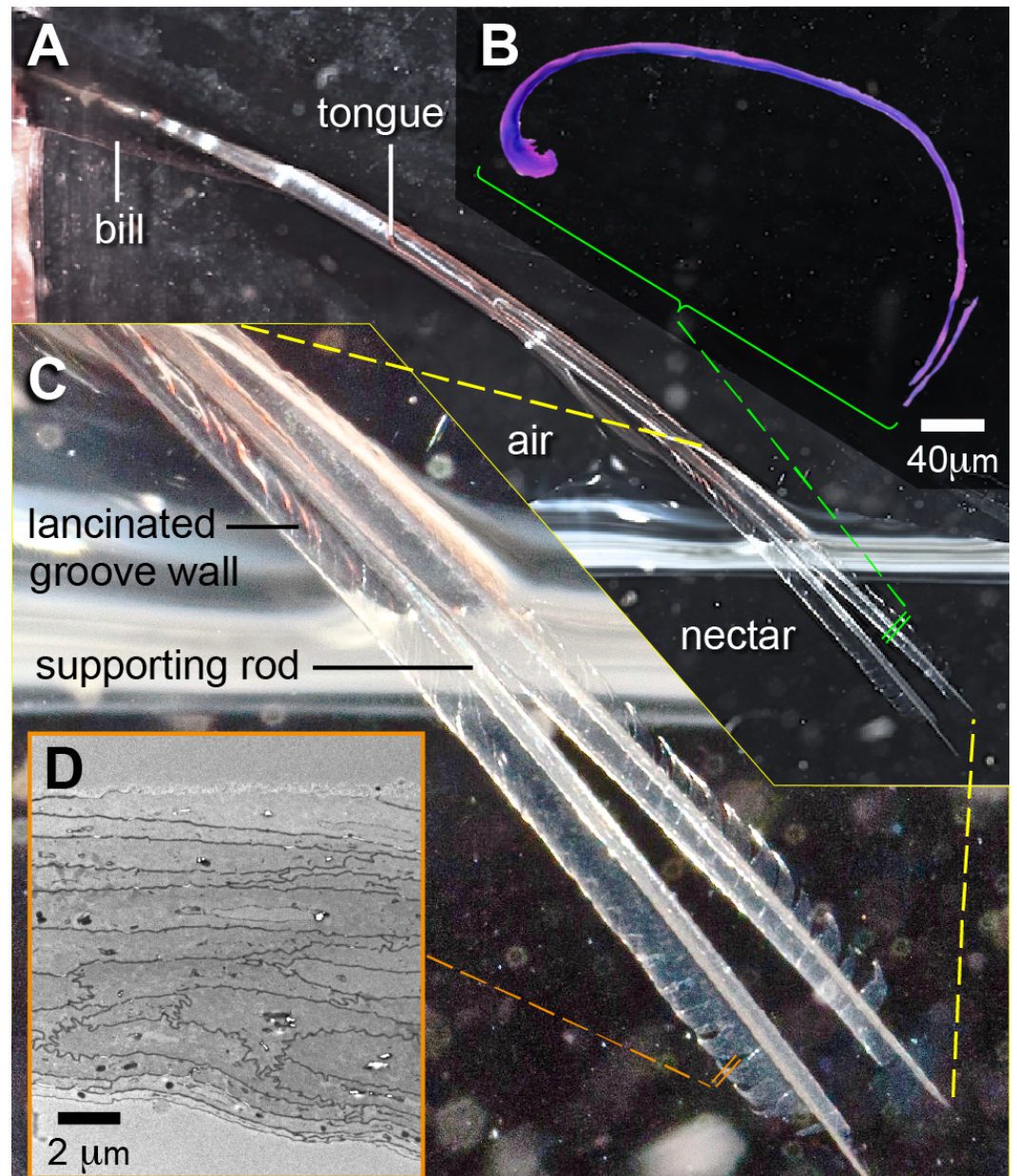


Lastly, I found that hummingbird tongues near the tip also lacked taste buds and salivary glands (found in other birds, review in [Erdoğan, Sağsöz & Akbalik, 2012](#)), in agreement with previous work by [Weymouth, Lasiewski & Berger \(1964\)](#).

### Ultrastructural characteristics of hummingbird tongues

The rostral portions of the hummingbird tongue, the ones that collect the food, are mostly transparent and their tissues are extremely thin ([Figs. 2, 8A and 8C](#)), a rare condition in vertebrates. The species studied with TEM had transparent tongues and also presented few and small dark corpuscles ([Fig. 4A](#)), which possibly are melanin granules (e.g., [Dummett & Barens, 1974](#)). I expect that species with darker tongues (tongue color varies across the family, ([Rico-Guevara, 2014](#))) will have more and/or larger dark corpuscles of the kind reported here. The  $\sim 35$  Å diameter structures that I found in the tissue ([Fig. 4C](#)) are likely to be microfibrils; the ventral layers of cornified tissue are more similar to those found in feathers ( $\beta$ -keratin) than to that of tissues with  $\alpha$ -keratin (cf. [Filshie & Rogers, 1962](#)). Specifically, the diameter of the putative microfibrils is within the range of other  $\beta$ -keratin tissue microarchitectures ([Parakkal & Alexander, 1972](#), p. 33), and almost a third of the diameter of  $\alpha$ -keratin microfibrils ([Filshie & Rogers, 1962](#); [Johnson & Sikorski, 1965](#)). In most avian tongues the *stratum corneum* at the ventral surface comprises less than 10% of the lingual tissue in a cross section ([Erdoğan, Sağsöz & Akbalik, 2012](#); [Erdoğan & Iwasaki, 2014](#)). Different from most birds, the cornified ventral layer in hummingbirds accounts for between 50%, near the cornified rod and near the groove base, and 100%, at the edge of the groove wall and at the tongue tip, of the tissue in cross sections ([Figs. 2, 3A, 8B and 8D, S2](#)). I suggest that most of the germinative layers of this keratinized stratified squamous epithelium (including the layers of dead cells, the *stratum corneum*) disappear before reaching the most rostral portions of the hummingbird tongue; similar to what would be expected in cross sections of human nail overhangs. Therefore, the caudal half of the hummingbird tongues is made of dead cornified tissue that is shaped by the interaction with the bill, and it is constantly replaced from the rostral half. A thick (cornified) layer of  $\beta$ -keratin can increase mechanical resistance on a surface that is compressed and scraped by the serrated edges of the bill tip  $\sim 14$  times a second ([Ewald & Williams, 1982](#)) and literally tens of thousands of times a day ([Rico-Guevara, 2014](#)). Future experiments to test the hypothetical high percentage (50–100%) of  $\beta$ -keratin in the hummingbird tongue grooves could use *in situ* hybridization, immunolabeling for  $\beta$ -keratins (e.g., in [Alibardi et al., 2009](#)) or selective biodegradation of  $\beta$ -keratin (e.g., [Lingham-Soliar, Bonser & Wesley-Smith, 2010](#); [Lingham-Soliar & Murugan, 2013](#)).

I found differences between the layers of tissue underlying the dorsal and ventral surfaces of the tongue grooves ([Fig. 3B](#)). These differences may be explained by the organization of the tissues ([Fig. 4A](#)), but they may also be influenced by differential composition and organization between proteins (fibrous vs. matrix components) and/or the presence of  $\beta$ -keratin (reviewed by [Alibardi et al., 2009](#)), which has been found in the rostral ventral epithelium of other avian tongues (review in [Carver, Knapp & Sawyer, 1990](#)). On the ventral surface of the tongue grooves I found thick *stratum corneum* (cf. [Fig. 4](#) in [Kadhim et al., 2013](#); [Figs. 5 and 6](#) in [Jackowiak et al., 2015](#)), but without the underlying *lamina*



**Figure 8** Tongue groove morphology at the most distal portions (near the tip) in a Ruby-throated Hummingbird (*Archilochus colubris*). (A) Photograph showing the tongue protrusion, its bifurcation, and the relaxed morphology of the grooves inside the nectar (courtesy of Don Carroll). (B) Cross section (light microscope) showing the reduction in cornified rod diameter and the thinning in the *stratum corneum* composing the grooves (which at this point is composed only of the cornified layer). (C) Close up to the tongue tip showing the membranous appearance of the grooves and the presence of diagonal cuts in the tissue (lancinated groove walls). (D) Electron micrograph showing the structure of the cornified layer, note the reduction in the number of cell layers and the absence of delineated boundaries in the dorsal surface (on top).



*propria* characteristic of heavily cornified areas in bird tongues (Farner, 1960; Kadhim et al., 2013). This *stratum corneum* in the tongue surface is common in birds (Farner, 1960; Erdoğan, Sağsöz & Akbalik, 2012; Erdoğan & Iwasaki, 2014), however, as opposed to hummingbirds, in several bird species the *stratum corneum* is better developed on the dorsal lingual surface (Iwasaki, 2002; Erdoğan, Sağsöz & Akbalik, 2012). I found more sloughing cell layers in the histology and TEM preparations in the dorsal compared to the ventral surface, which indicates that the ventral surface is underlain by harder keratin (cf. Lucas & Stettenheim, 1972). Interestingly, my results are consistent with the idea that dorsal and ventral surfaces of hummingbird tongues have different rugosities (Figs. 5 and 8D). To conclude that there are significant differences between dorsal and ventral surfaces of the hummingbird tongue, it would be necessary to quantify differences in roughness; the best way to do this is by using Atomic Force Microscopy (e.g., Ghosh et al., 2013). Alternative techniques (e.g., Nanda, Sarangi & Sahu, 1998; Fujii, 2011; Kremer et al., 2015) include the use of optical interferometry (e.g., white light scanner), and 3-D reconstructions of tilted SEM micrographs (stereomicroscopy). Differential rugosity between tongue surfaces would have direct implications for their hydrophobicity, i.e., increased roughness may significantly increase contact angle of a water droplet and decrease contact angle hysteresis, which would augment its hydrophobicity (e.g., Michael & Bhushan, 2007). Therefore, the dorsal tongue groove surface, which is less rugose, may be more hydrophilic than the ventral groove surface, and potentially facilitating the fluid trapping process described by Rico-Guevara & Rubega (2011).

### Microanatomy of the hummingbird feeding apparatus

Hummingbird tongues, as well as most avian tongues, correspond to the shape of the interramal region (oropharyngeal cavity floor), although commonly not to its size (e.g., Abou-Zaid & Al-Jaloud, 2010; Tivane et al., 2011; review in Abumandour, 2014). Nevertheless, it is worth noting that avian tongues are not larger than the oropharyngeal cavity (as it is the case in some nectarivorous bats, Muchhala, 2006), instead, to reach farther away from the tip of their bills, the mobile bones of the hyoid apparatus in some avian taxa appear greatly elongated, allowing for tongue protrusion (e.g., Video S5). In hummingbirds, the tongue grooves fit perfectly in the rostral portion of the oropharyngeal cavity and match both lower and upper bill internal walls (Fig. 2), which is of vital importance for the efficient offloading of nectar (cf. Rico-Guevara & Rubega, 2011) and intraoral transport (Rico-Guevara, 2014). My study presents the first high-resolution (5- $\mu$ m voxels) CT scan of a vertebrate tongue satisfactorily stained to highlight soft tissue. A study on flamingos presented detailed CT scans of the head (including the tongue) stained with a novel injection technique (Holliday et al., 2006), but it focused on vascular anatomy at lower resolution than in the present study. Within the last five years other studies have used a variety of techniques to enhance visualization of soft tissue in vertebrates (reviews in Gignac & Kley, 2014; Lautenschlager, Bright & Rayfield, 2014; Gignac et al., 2016), but they have not been focused on tongues or worked at the micro scale of the present study. This three-dimensional modeling of hummingbird tongues allows for the clarification of some misconceptions; for instance, it has been suggested that the mathematical model derived

for capillary filling provides a rationale for the shape of hummingbird tongues (*Kim et al., 2012*). Specifically, that the semi-cylindrical shape of the grooves (cylinders with a dorsal slit) can be explained by an optimal opening angle of a cross section, which matches a peak of energy intake rates (Fig. 4 in *Kim et al., 2012*). I prefer a more parsimonious explanation: starting with a dorso-ventrally flattened tongue as an ancestral condition (cf. *Emura, Okumura & Chen, 2010; Shah & Aziz, 2014*), evolution would maximize the nectar-holding capacity by selecting for a cylindrical structure. In the same way in which a sphere is the shape with the lowest surface area to volume ratio, for an elongated structure (like a tongue), a cylindrical configuration achieves the greatest capacity for a given amount of tissue (in this case, the groove walls). It is worth noting that the tongue tip whilst outside the nectar ends in a conical shape (Fig. 1 in *Rico-Guevara, Fan & Rubega, 2015*), due to a shortening of the cross-sectional length of the groove wall (Figs. 2 and 3), which helps to trap and retain the nectar at high licking rates (*Rico-Guevara & Rubega, 2011*). Rostrally, the groove wall membranes exhibit diagonal to perpendicular cuts in the tissue starting from their lateral edges (Fig. 8C), forming lancinated walls in the distal portions of the grooves (*Lucas, 1891*; also called lamellae, *Rico-Guevara & Rubega, 2011*). Such cuts may originate by wear during the extruding action of the serrated bill tips on the rostral tongue portions (*Lucas, 1891; Rico-Guevara, 2014*), and may facilitate the bending of the tongue tip and trapping of fluid drops while mopping the inside of nectar chambers. Wearing at the tongue tip seems to counteract the continuous elongation of the tongue by the growing tissue at the base of the grooves (cf. Fig. 2), and unpublished descriptions of hummingbirds with ‘dislocated’ tongues (feeding from artificial feeders with the tongue always hanging to one side from the bill base) report that their tongues are unusually long and/or they become longer with time.

Additionally, microCT data could inform the mathematical models necessary to make predictions about feeding efficiency across the varying morphology of hummingbird species. For instance, by calculating the total and partial groove capacities depending on immersion lengths (conditioned by the nectar pools on the flowers they visit) the expected amount of liquid extracted can be obtained, and then compared to performance measurements in the wild. Further calculations of the intraoral flow on nectar (based on the bill-tongue internal coupling) taking into account a range of liquid properties that vary in nature (e.g., composition, viscosity, temperature, etc.) will provide information on the limiting step of the fluid collection and transport system. Such an approach would generate falsifiable quantitative predictions about the action of the feeding apparatus, and the volumes of nectar that can be collected and the speed at which they can be transported, for nectars of different concentrations and at different temperatures (hummingbirds feed from flowers at elevations as high as 5,000 m, *Carpenter, 1976*). Results from this proposed approach will shed new light on the long-standing debate about the reason of the mismatch between hummingbird nectar concentration preferences (*Hainsworth & Wolf, 1976; Roberts, 1996; Morgan et al., 2016*) and the concentration of the nectar of the flowers they pollinate (review in *Nicolson, Nepi & Pacini, 2007*). The predictions from these mathematical models available only with the MicroCT reconstruction data, could be tested with additional experiments under controlled conditions using *post mortem*

tongues (building on the *ex-vivo* experiments presented here), and by measuring nectar extraction rates (fluid volume uptake ( $\mu\text{l/s}$ )) in free-living nectarivores living under extreme environmental conditions.

### Biophysics of nectar collection

The *post-mortem* observations (e.g., [Videos S3, S4](#)) are consistent with the idea that expansive filling and nectar trapping are processes that do not incur any extra energy than that necessary to squeeze the nectar out of the tongue and inside the bill, making this elastic micropump a highly efficient device ([Rico-Guevara, 2014](#)). This is because when the tongue tips enter the surface of the nectar pool, the attractive forces (adhesion and cohesion) holding the groove walls flattened get weaker because more molecules of fluid are available to fill the internal groove space. This creates an imbalance, with elastic forces dominating, which results in reshaping of the groove walls away from the flattened configuration at the tongue tips. Molecules of nectar are pulled inside the grooves through the release of the elastic energy initially stored on the flattening of the groove walls ([Fig. 6](#)). Because the grooves are sealed on top (by surface tension in the zipped dorsal slit), the release of the elastic energy (reshaping of the grooves) pulls more and more nectar molecules inside the grooves until they reach a stable cylindrical configuration, from the tips to the base of the grooves. The net result of this process is that the portions of the tongue that remain outside the liquid expand and are filled quickly with nectar, thereby improving fluid collection efficiency. Thus, the tongue filling is achieved through the transition from a high potential energy state (flattened grooves) to a low potential energy state (filled grooves). In summary, the elastic properties of the cornified layer make the elasticity-induced flow hypothesis plausible. This is ecologically relevant because when the bill tip is almost in contact with the nectar surface (most likely scenario in the wild given hummingbird flowers' internal morphology), the process described above is sufficient to fully load the fringed distal portion of the tongue. Nevertheless, when the bill tip is not in contact with the surface of the nectar (e.g., hummingbirds visiting flowers with corollas longer than their bills), but instead there is a space between the bill tip and the nectar pool, the portion of the tongue that remains outside the liquid would be filled with fluid by the interaction of the aforementioned physical forces in a process I hypothesize as follows: As the tongue is protruded, the grooves are dorso-ventrally flattened by the bill tips, and once the tongue tip contacts the nectar surface the fluid starts to penetrate the flattened grooves (because of cohesion of water molecules in the nectar pool and water molecules in the nectar remaining trapped inside the tongue). When the grooves expand, their walls start releasing the potential energy stored by the bending (flattening by the bill tips). At this point, the excess Laplace pressure due to the nectar flowing inside the grooves plus the releasing of the potential energy whilst the grooves' walls are recovering their semi-cylindrical shape, create a positive feedback between the groove's internal space expansion and the nectar flow. The net result of this process is that the portion of the tongue that remains outside the nectar is also loaded with nectar ([Fig. 6](#)). Additionally, if there are empty portions of the tongue still inside the beak before passing through the squeezing zone at the bill tip, the nectar filling the grooves will reach them via cohesive and adhesive forces to all the internal surfaces;

thereby allowing complete loading of the grooves. Alternatively, the complete filling of the tongue may be achieved by the bill-tongue interaction, involving mechanisms like suction, surface tension transport, hydrostatic pressure motion, etc. However, this would be dependent on, and pertains to, the intra-oral transport of the nectar, which remains understudied.

## CONCLUSIONS

A variety of anatomical structures allow hummingbirds to protrude their tongues and drag food backwards. Hummingbird tongue shape matches the shape of the internal bill walls, which is important to understand and model the squeezing of the tongue and movement of the nectar to the throat. The rostral portions of the tongue are mostly made of a cornified layer ( $\beta$ -keratin) that is replaced from the tongue basal portions, and worn at the tip by the interaction with the bill tips upon nectar extrusion. Interestingly, if the dorsal and ventral surfaces have different rugosities that may have direct implications to their hydrophobicity, i.e., increased roughness may significantly increase contact angle (of a water droplet) and decrease contact angle hysteresis (e.g., *Michael & Bhushan, 2007*). Therefore, at the grooves, the inner tongue surface may be more hydrophilic than the outer surface, potentially helping the fluid trapping process (*Rico-Guevara & Rubega, 2011*) and maintaining the surface tension zip at the dorsal slit along the grooves (*Figs. 6C–6D*).

Hummingbird tongues are thinner than other bird tongues (references above), the walls of the grooves are between  $\sim 10$  and  $30 \mu\text{m}$  thick, which makes them highly pliable. In addition, the tissue architecture of the cornified layer resembling a brick-wall configuration, along with its keratinous composition, grants non-stretchable properties to the grooves. Hence, hummingbird tongues are easily squeezed to unload the nectar inside the bill (*Rico-Guevara & Rubega, 2011*), yielding to storage of elastic potential energy in the flattened tips, which is then released when the tongue is reinserted in the nectar (*Rico-Guevara, 2014*), thereby improving liquid uptake efficiency. The proper functioning of hummingbird tongue grooves as dynamic structures depends on the balance between pliability and elasticity; in particular, the latter has to be strong enough to help the pumping process to extract nectar but weak enough to keep the grooves flattened until they contact the nectar surface (*Rico-Guevara, Fan & Rubega, 2015*). Several scaling models and applications have been developed on the basis of recent discoveries of biological phenomena and underlying physical explanations (see *Vogel, 2011*), which opens the way for deeper studies of the influence of the surface characteristics (e.g., differential hydrophilicity) and the tissue composition of the grooves on the elastic properties of hummingbird tongues.

The present work raises anew the question: how do hummingbirds feed? Much work remains before the whole nectar feeding process in hummingbirds and other nectarivores can be fully explained. Achieving a fuller understanding of the mechanics of the nectar-feeding process may help eliminate the disparity between the theoretical predictions of how birds should act and empirical observations of what they actually do. A detailed three-dimensional morphological description that allows for detailed mathematical modeling will aid in understanding different aspects of their food collection efficiency limits and

deviations of predicted vs. realized performance, which are the building blocks of foraging and coevolution principles (review in [Pyke, 2016](#)). Since the inferences presented in this paper apply only to the species studied, future work should focus on corroborate or disprove the trends presented here applying equivalent methods on a wider range of taxa. Detailed accounts on the gross morpho-functional diversity of the feeding apparatus of hummingbirds have been accomplished in the past (e.g., [Yanega, 2007](#); [Rico-Guevara, 2014](#)), but detailed comparative and phylogenetically corrected studies including modern visualization techniques are warranted (e.g., CT scans, [Ekdale, 2006](#); 3D white-light scans, [Cooney et al., 2017](#)). This paper sets the bases for morpho-functional comparisons between hummingbirds and other nectar feeding organisms, as an example of convergent and alternative ways to maximize food collection efficiency in nature.

## ACKNOWLEDGEMENTS

I thank Margaret Rubega, Diego Sustaita, and Kurt Schwenk for thorough discussions; Stephen Daniels and Marie Cantino for their help with electron microscopy and specimen staining for microCT; Kristiina Hurme for style corrections; the National Science Foundation funded course: Basics of CT data acquisition, visualization, and analysis, at The University of Texas High-Resolution X-ray CT Facility for training; Dominique Homberger, Robert Colwell, Tai-Hsi Fan, and Carl Schlichting for their priceless comments on earlier versions of the manuscript; and the Miller Institute at UC Berkeley.

## ADDITIONAL INFORMATION AND DECLARATIONS

### Funding

This study was funded by the American Ornithologists' Union, the Ecology and Evolutionary Biology Department at the University of Connecticut, and the Miller Institute. The funders had no role in study design, data collection and analysis, decision to publish, or preparation of the manuscript.

### Grant Disclosures

The following grant information was disclosed by the author:

American Ornithologists' Union.

Ecology and Evolutionary Biology Department at the University of Connecticut.

Miller Institute.

### Competing Interests

The author declares there are no competing interests.

### Author Contributions

- Alejandro Rico-Guevara conceived and designed the experiments, performed the experiments, analyzed the data, contributed reagents/materials/analysis tools, wrote the paper, prepared figures and/or tables, reviewed drafts of the paper.



## Animal Ethics

The following information was supplied relating to ethical approvals (i.e., approving body and any reference numbers):

Activities were reviewed and authorized by the Institutional Animal Care and Use Committee at the University of Connecticut.

## Data Availability

The following information was supplied regarding data availability:

The raw data is included in the figures and in the [Supplemental Files](#).

## Supplemental Information

Supplemental information for this article can be found online at <http://dx.doi.org/10.7717/peerj.3449#supplemental-information>.

## REFERENCES

- Abou-Zaid DF, Al-Jaloud NA. 2010.** The structural adaptations of the lingual apparatus of the grey heron, *Ardea cinerea*. *Egyptian Journal of Experimental Biology* 6:307–317.
- Abumandour MM. 2014.** Gross anatomical studies of the oropharyngeal cavity in Eurasian Hobby (Falconinae: *Falco Subbuteo*, Linnaeus 1758). *Journal of Life Sciences Research* 1:80–92.
- Alibardi L, Dalla Valle L, Nardi A, Toni M. 2009.** Evolution of hard proteins in the sauropsid integument in relation to the cornification of skin derivatives in amniotes. *Journal of Anatomy* 214:560–586 DOI 10.1111/j.1469-7580.2009.01045.x.
- Baldwin MW, Toda Y, Nakagita T, O’Connell MJ, Klasing KC, Misaka T, Edwards SV, Liberles SD. 2014.** Evolution of sweet taste perception in hummingbirds by transformation of the ancestral umami receptor. *Science* 345:929–933 DOI 10.1126/science.1255097.
- Baumel JJ, King AS, Breazile JE, Evans HE, Vanden Berge JC. 1993.** *Handbook of avian anatomy: nomina anatomica avium*. 2nd edition. Cambridge: Nuttall Ornithological Club.
- Baussart S, Bels V. 2011.** Tropical hornbills (*Aceros cassidix*, *Aceros undulatus*, and *Buceros hydrocorax*) use ballistic transport to feed with their large beaks. *Journal of Experimental Zoology* 315:72–83 DOI 10.1002/jez.590.
- Baussart S, Korsoun L, Libourel PA, Bels V. 2009.** Ballistic food transport in toucans. *Journal of Experimental Zoology* 311:465–474 DOI 10.1002/jez.542.
- Birt P, Hall LS, Smith GC. 1997.** Ecomorphology of the tongues of Australian megachiroptera (Chiroptera: Pteropodidae). *Australian Journal of Zoology* 45:369–384 DOI 10.1071/ZO97005.
- Bock WJ. 1972.** Morphology of the tongue apparatus of *Ciridops anna* (Drepanididae). *Ibis* 114:61–78.
- Bock WJ. 1999.** Functional and evolutionary morphology of woodpeckers. *Ostrich* 70:23–31 DOI 10.1080/00306525.1999.9639746.

- Bozzola JJ, Russell LD. 1999.** Specimen preparation for transmission electron microscopy. In: Bozzola JJ, Russell LD, eds. *Electron microscopy: principles and techniques for biologists*. Sudbury: Jones and Bartlett, 21–31.
- Bright JA, Marugán-Lobón J, Cobb SN, Rayfield EJ. 2016.** The shapes of bird beaks are highly controlled by nondietary factors. *Proceedings of the National Academy of Sciences of the United States of America* **113**:5352–5357 DOI [10.1073/pnas.1602683113](https://doi.org/10.1073/pnas.1602683113).
- Carpenter FL. 1976.** Ecology and evolution of an Andean hummingbird (*Oreotrochilus estella*). *University of California Publications in Zoology* **106**:1–74.
- Carver WE, Knapp LW, Sawyer RH. 1990.**  $\beta$ -keratin expression in avian tongue cell aggregates. *Journal of Experimental Zoology Part A: Ecological Genetics and Physiology* **256**:333–338.
- Chang YM, Lin HY, Hatch KA, Yao CT, Shiu HJ. 2013.** Brush-tipped tongue structure of the Taiwan Yuhina (*Yuhina brunneiceps*) and White-eared Sibia (*Heterophasia auricularis*). *Wilson Journal of Ornithology* **125**:204–208 DOI [10.1676/12-016.1](https://doi.org/10.1676/12-016.1).
- Cooney CR, Bright JA, Capp EJR, Chira AM, Hughes EC, Moody CJA, Nouri LO, Varley ZK, Thomas GH. 2017.** Mega-evolutionary dynamics of the adaptive radiation of birds. *Nature* **542**:344–347 DOI [10.1038/nature21074](https://doi.org/10.1038/nature21074).
- Darwin C. 1841.** *The Zoology of the voyage of H.M.S. Beagle: part III, birds*. London: Smith, Elder and Co, 156 p.
- Downs CT. 2004.** Some preliminary results of studies on the bill and tongue morphology of Gurney's Sugarbird and some southern African sunbirds. *Ostrich* **75**:169–175 DOI [10.2989/00306520409485432](https://doi.org/10.2989/00306520409485432).
- Dummett CO, Barends G. 1974.** Avian oral pigmentation. *Journal of Periodontology* **45**(6):426–433.
- Ekdale E. 2006.** “*Eutoxeres aquila*”; “*Patagona gigas*” (On-line), digital morphology. Available at [http://digimorph.org/specimens/Eutoxeres\\_aquila/](http://digimorph.org/specimens/Eutoxeres_aquila/); [http://digimorph.org/specimens/Patagona\\_gigas/](http://digimorph.org/specimens/Patagona_gigas/) (accessed on 15 May 2016).
- Emura S, Okumura T, Chen H. 2010.** Scanning electron microscopic study of the tongue in the jungle nightjar (*Caprimulgus indicus*). *Okajimas Folia Anatomica Japonica* **86**:117–120 DOI [10.2535/ofaj.86.117](https://doi.org/10.2535/ofaj.86.117).
- Erdoğan S, Alan A. 2012.** Gross anatomical and scanning electron microscopic studies of the oropharyngeal cavity in the European magpie (*Pica pica*) and the common raven (*Corvus corax*). *Microscopy Research and Technique* **75**:379–387 DOI [10.1002/jemt.21067](https://doi.org/10.1002/jemt.21067).
- Erdoğan S, Iwasaki SI. 2014.** Function-related morphological characteristics and specialized structures of the avian tongue. *Annals of Anatomy* **196**:75–87 DOI [10.1016/j.aanat.2013.09.005](https://doi.org/10.1016/j.aanat.2013.09.005).
- Erdoğan S, Pérez W. 2015.** Anatomical and scanning electron microscopic characteristics of the oropharyngeal cavity (tongue, palate and laryngeal entrance) in the southern lapwing (Charadriidae: *Vanellus chilensis*, Molina 1782). *Acta Zoologica* **96**:264–272 DOI [10.1111/azo.12075](https://doi.org/10.1111/azo.12075).
- Erdoğan S, Sağsöz H, Akbalik ME. 2012.** Anatomical and histological structure of the tongue and histochemical characteristics of the lingual salivary glands in the

- chukar partridge (*Alectoris chukar*, Gray 1830). *British Poultry Science* **53**:307–315  
DOI 10.1080/00071668.2012.700507.
- Erdoğan S, Pérez W, Alan A. 2012.** Anatomical and scanning electron microscopic investigations of the tongue and laryngeal entrance in the long-legged buzzard (*Buteo rufinus*, crettschmar, 1829). *Microscopy Research and Technique* **75**:1245–1252  
DOI 10.1002/jemt.22057.
- Ewald PW, Williams WA. 1982.** Function of the bill and tongue in nectar uptake by hummingbirds. *Auk* **99**:573–576.
- Farner DS. 1960.** Chapter XI. Digestion and the digestive system. In: Marshall AJ, ed. *Biology and comparative physiology of birds*. Vol. I. New York: Academic Press, 411–467.
- Feinsinger P, Colwell RK. 1978.** Community organization among neotropical nectar-feeding birds. *American Zoologist* **18**:779–795 DOI 10.1093/icb/18.4.779.
- Filshie BK, Rogers GE. 1962.** An electron microscope study of the fine structure of feather keratin. *Journal of Cell Biology* **13**:1–12 DOI 10.1083/jcb.13.1.1.
- Fleming TH, Muchhala N. 2008.** Nectar-feeding bird and bat niches in two worlds: pantropical comparisons of vertebrate pollination systems. *Journal of Biogeography* **35**:764–780 DOI 10.1111/j.1365-2699.2007.01833.x.
- Fujii Y. 2011.** Comparison of surface roughness estimations by X-ray reflectivity measurements and TEM observations. *IOP Conference Series: Materials Science and Engineering* **24**:012008.
- Ghosh S, Bowen J, Jiang K, Espino DM, Shepherd DE. 2013.** Investigation of techniques for the measurement of articular cartilage surface roughness. *Micron* **44**:179–184  
DOI 10.1016/j.micron.2012.06.007.
- Gignac PM, Kley NJ. 2014.** Iodine-enhanced micro-CT imaging: methodological refinements for the study of the soft-tissue anatomy of post-embryonic vertebrates. *Journal of Experimental Zoology* **322**:166–176 DOI 10.1002/jez.b.22561.
- Gignac PM, Kley NJ, Clarke JA, Colbert MW, Morhardt AC, Cerio D, Cost IN, Cox PG, Daza JD, Early CM, Echols MS. 2016.** Diffusible iodine-based contrast-enhanced computed tomography (diceCT): an emerging tool for rapid, high-resolution, 3-D imaging of metazoan soft tissues. *Journal of Anatomy* **228**(6):889–909  
DOI 10.1111/joa.12449.
- Guimarães JP, Britto MR, Le Bas A, Miglino MA. 2014.** Ultrastructural aspects of the tongue in Magellanic Penguins *Spheniscus magellanicus* (Forster, 1781). *Acta Scientiarum. Biological Sciences* **36**:491–497 DOI 10.4025/actascibiols.v36i4.23168.
- Gusseklou SW, Bout RG. 2005.** The kinematics of feeding and drinking in palaeognathous birds in relation to cranial morphology. *Journal of Experimental Biology* **208**:3395–3407 DOI 10.1242/jeb.01769.
- Hainsworth FR. 1973.** On the tongue of a hummingbird: its role in the rate and energetics of feeding. *Comparative Biochemistry and Physiology* **46**:64–78  
DOI 10.1016/0300-9629(73)90559-8.
- Hainsworth FR, Wolf LL. 1976.** Nectar characteristics and food selection by hummingbirds. *Oecologia* **25**:101–113 DOI 10.1007/BF00368847.

- Handschuh S, Baeumler N, Schwaha T, Ruthensteiner B. 2013.** A correlative approach for combining microCT, light and transmission electron microscopy in a single 3D scenario. *Frontiers in Zoology* **10**:44–59 DOI [10.1186/1742-9994-10-44](https://doi.org/10.1186/1742-9994-10-44).
- Hardesty J. 2009.** Using nitrogen-15 to examine protein sources in hummingbird diets. *Ornitologia Colombiana* **8**:19–28.
- Harper CJ, Swartz SM, Brainerd EL. 2013.** Specialized bat tongue is a hemodynamic nectar mop. *Proceedings of the National Academy of Sciences of the United States of America* **110**:8852–8857 DOI [10.1073/pnas.1222726110](https://doi.org/10.1073/pnas.1222726110).
- Harte M, Legreneur P, Pelle E, Placide MA, Bels V. 2012.** Ballistic food transport in birds: the example of *Casuaricus casuaricus*. *Computer Methods in Biomechanics and Biomedical Engineering* **15**:137–139 DOI [10.1080/10255842.2012.713665](https://doi.org/10.1080/10255842.2012.713665).
- Hayat MA. 2000.** *Principles and techniques of electron microscopy: Biological applications*. 4th edition. London: Academic Press, 564 p.
- Holliday CM, Ridgely RC, Balanoff AM, Witmer LM. 2006.** Cephalic vascular anatomy in flamingos (*Phoenicopterus ruber*) based on novel vascular injection and computed tomographic imaging analyses. *Anatomical Record* **288**:1031–1041.
- Homberger DG. 1980.** Funktionell-morphologische untersuchungen zur radiation der ernährungs-und trinkmethoden der papageien (Psittaci). Dissertation, Universität Zürich.
- Homberger DG. 2017.** The avian lingual and laryngeal apparatus within the context of the head and jaw apparatus, with comparisons to the mammalian condition: functional morphology and biomechanics of evaporative cooling, feeding, drinking, and vocalization. In: Maina J, ed. *The biology of the avian respiratory system*. Springer International Publishing, 27–97.
- Homberger DG, Meyers RA. 1989.** Morphology of the lingual apparatus of the domestic chicken, *Gallus gallus*, with special attention to the structure of the fasciae. *The American Journal of Anatomy* **186**:217–257 DOI [10.1002/aja.1001860302](https://doi.org/10.1002/aja.1001860302).
- Iwasaki S-I. 2002.** Evolution of the structure and function of the vertebrate tongue. *Journal of Anatomy* **201**:1–13 DOI [10.1046/j.1469-7580.2002.00073.x](https://doi.org/10.1046/j.1469-7580.2002.00073.x).
- Iwasaki S-I, Asami T, Chiba A. 1997.** Ultrastructural study of the keratinization of the dorsal epithelium of the tongue of Middendorff's Bean Goose, *Anser fabalis middendorffii* (Anseres, Anseridae). *Anatomical Record* **247**:149–163 DOI [10.1002/\(SICI\)1097-0185\(199702\)247:2<149::AID-AR1>3.0.CO;2-T](https://doi.org/10.1002/(SICI)1097-0185(199702)247:2<149::AID-AR1>3.0.CO;2-T).
- Jackowiak H, Andrzejewski W, Godynicki S. 2006.** Light and scanning electron microscopic study of the tongue in the cormorant *Phalacrocorax carbo* (Phalacrocoracidae, Aves). *Zoological Science* **23**:161–167 DOI [10.2108/zsj.23.161](https://doi.org/10.2108/zsj.23.161).
- Jackowiak H, Skieresz-Szewczyk K, Godynicki S, Iwasaki S-I, Meyer W. 2011.** Functional morphology of the tongue in the Domestic Goose (*Anser anser f. domestica*). *Anatomical Record* **294**:1574–1584 DOI [10.1002/ar.21447](https://doi.org/10.1002/ar.21447).
- Jackowiak H, Skieresz-Szewczyk K, Kwieciński Z, Godynicki S, Jackowiak K, Leszczyszyn A. 2015.** Light microscopy and scanning electron microscopy studies on the reduction of the tongue microstructures in the White Stork (*Ciconia ciconia*, Aves). *Acta Zoologica* **96**:436–441 DOI [10.1111/azo.12087](https://doi.org/10.1111/azo.12087).



- Jackowiak H, Skieresz-Szewczyk K, Kwiecinski Z, Trzcielinska-Lorych J, Godynicki S. 2010. Functional morphology of the tongue in the Nutcracker (*Nucifraga caryocatactes*). *Zoological Science* 27:589–594 DOI 10.2108/zsj.27.589.
- Johnson DJ, Sikorski J. 1965. Alpha-keratin: molecular and fine structure of  $\alpha$ -keratin (IV). *Nature* 205:266–268 DOI 10.1038/205266a0.
- Jung JY, Naleway SE, Yaraghi NA, Herrera S, Sherman VR, Bushong EA, McKittrick J. 2016. Structural analysis of the tongue and hyoid apparatus in a woodpecker. *Acta Biomaterialia* 37:1–13 DOI 10.1016/j.actbio.2016.03.030.
- Kadhim KK, Zuki ABZ, Babjee SMA, Noordin MM, Zamri-Saad M. 2013. Morphological and histochemical observations of the red jungle fowl tongue *Gallus gallus*. *African Journal of Biotechnology* 10:9969–9977.
- Kim W, Peaudcerf F, Baldwin MW, Bush JW. 2012. The hummingbird's tongue: a self-assembling capillary syphon. *Proceedings of the Royal Society B: Biological Sciences* 279:4990–4996 DOI 10.1098/rspb.2012.1837.
- Kobayashi K, Kumakura M, Yoshimura K, Inatomi M, Asami T. 1998. Fine structure of the tongue and lingual papillae of the penguin. *Archives of Histology and Cytology* 61:37–46 DOI 10.1679/aohc.61.37.
- Kremer A, Lippens S, Bartunkova S, Asselbergh B, Blanpain C, Fendrych M, Guérin CJ. 2015. Developing 3D SEM in a broad biological context. *Journal of Microscopy* 259:80–96 DOI 10.1111/jmi.12211.
- Lautenschlager S, Bright JA, Rayfield EJ. 2014. Digital dissection—using contrast-enhanced computed tomography scanning to elucidate hard- and soft-tissue anatomy in the Common Buzzard *Buteo buteo*. *Journal of Anatomy* 224:412–431 DOI 10.1111/joa.12153.
- Lingham-Soliar T, Bonser RH, Wesley-Smith J. 2010. Selective biodegradation of keratin matrix in feather rachis reveals classic bioengineering. *Proceedings of the Royal Society B: Biological Sciences* 277:1161–1168 DOI 10.1098/rspb.2009.1980.
- Lingham-Soliar T, Murugan N. 2013. A new helical crossed-fibre structure of  $\beta$ -keratin in flight feathers and its biomechanical implications. *PLOS ONE* 8:e65849 DOI 10.1371/journal.pone.0065849.
- Lucas FA. 1891. On the structure of the tongue in humming birds. *Proceedings of the United States National Museum* 14:169–172 DOI 10.5479/si.00963801.14-848.169.
- Lucas FA. 1894. The tongue of the cape may warbler. *Auk* 11:141–144 DOI 10.2307/4067665.
- Lucas AM, Stettenheim PB. 1972. Avian anatomy. In: *Integument. Agriculture Handbook*. 362. Washington, D.C.: US Department of Agriculture.
- Martin WCL. 1833. *The naturalist's library: a general history of humming-birds or the Trochilidae*. London: H.G. Bohn, 276 p.
- McGuire JA, Witt CC, Remsen JV, Corl A, Rabosky DL, Altshuler DL, Dudley R. 2014. Molecular phylogenetics and the diversification of hummingbirds. *Current Biology* 24:910–916 DOI 10.1016/j.cub.2014.03.016.

- Metscher BD. 2009.** MicroCT for comparative morphology: simple staining methods allow high-contrast 3D imaging of diverse non-mineralized animal tissues. *BMC Physiology* **9**:11 DOI [10.1186/1472-6793-9-11](https://doi.org/10.1186/1472-6793-9-11).
- Michael N, Bhushan B. 2007.** Hierarchical roughness makes superhydrophobic states stable. *Microelectronic Engineering* **84**:382–386 DOI [10.1016/j.mee.2006.10.054](https://doi.org/10.1016/j.mee.2006.10.054).
- Mobbs AJ. 1979.** Methods used by the Trochilidae (hummingbirds) when capturing insects. *Aviculture Magazine* **85**:26–30.
- Morgan KV, Hurly TA, Martin L, Healy SD. 2016.** Presentation order affects decisions made by foraging hummingbirds. *Behavioral Ecology and Sociobiology* **70**:21–26 DOI [10.1007/s00265-015-2017-7](https://doi.org/10.1007/s00265-015-2017-7).
- Morioka H. 1992.** Tongue of two species of Prionochilus from the Philippines, with notes on feeding habits of flowerpeckers (Dicaeidae). *Japanese Journal of Ornithology* **40**:85–91 DOI [10.3838/jjo.40.85](https://doi.org/10.3838/jjo.40.85).
- Muchhala N. 2006.** Nectar bat stows huge tongue in its rib cage. *Nature* **444**:701–702 DOI [10.1038/444701a](https://doi.org/10.1038/444701a).
- Nanda KK, Sarangi SN, Sahu SN. 1998.** Measurement of surface roughness by atomic force microscopy and Rutherford backscattering spectrometry of CdS nanocrystalline films. *Applied Surface Science* **133**:293–297 DOI [10.1016/S0169-4332\(98\)00212-8](https://doi.org/10.1016/S0169-4332(98)00212-8).
- Newton A, Gadow H, Lydekker R, Roy CS, Shufeldt RW. 1896.** *A dictionary of birds*. London: A & C Black, 1066 p.
- Nicolson SW, Nepi M, Pacini E. 2007.** *Nectaries and nectar*. Dordrecht: Springer Netherlands, 396 p.
- Ortiz-Crespo F. 2003.** *Los colibríes: historia natural de unas aves casi sobrenaturales*. Quito, Ecuador: FUNDACYT, Mariscal Press, 60–63.
- Parakkal PF, Alexander NJ. 1972.** *Keratinization: a survey of vertebrate epithelia*. New York: Academic Press, 59 p.
- Parchami A, Dehkordi RAF, Bahadoran S. 2010.** Scanning electron microscopy of the tongue in the golden eagle *Aquila chrysaetos* (Aves: Falconiformes: Accipitridae). *World Journal of Zoology* **5**:257–263.
- Paton DC, Collins BG. 1989.** Bills and tongues of nectar-feeding birds: a review of morphology, function and performance, with intercontinental comparisons. *Austral Ecology* **14**:473–506 DOI [10.1111/j.1442-9993.1989.tb01457.x](https://doi.org/10.1111/j.1442-9993.1989.tb01457.x).
- Pratt HD. 1992.** Is the Poo-uli a Hawaiian honeycreeper (Drepanidinae)? *The Condor* **94**:172–180.
- Pyke GH. 2016.** Plant–pollinator co-evolution: it’s time to reconnect with optimal foraging theory and evolutionarily stable strategies. *Perspectives in Plant Ecology, Evolution and Systematics* **19**:70–76 DOI [10.1016/j.ppees.2016.02.004](https://doi.org/10.1016/j.ppees.2016.02.004).
- Rand AL. 1961.** *The tongue and nest of certain flowerpeckers, Aves: Dicaeidae*. Chicago: Natural History Museum.
- Rand AL. 1967.** The flower-adapted tongue of a Timaliinae bird and its implications. *Fieldiana Zoology* **51**:53–61.

- Remsen Jr V, Stiles FG, McGuire JA. 2015.** Classification of polytminae (Aves: Trochilidae). *Zootaxa* **3957**:143–150 DOI [10.11646/zootaxa.3957.1.13](https://doi.org/10.11646/zootaxa.3957.1.13).
- Reynolds ES. 1963.** The use of lead citrate at high pH as an electron-opaque stain in electron microscopy. *Journal of Cell Biology* **17**:208–212 DOI [10.1083/jcb.17.1.208](https://doi.org/10.1083/jcb.17.1.208).
- Rico-Guevara A. 2008.** Morfología y forrajeo para buscar artrópodos por colibríes altoandinos. *Ornitología Colombiana* **7**:43–58.
- Rico-Guevara A. 2014.** Morphology and function of the drinking apparatus in hummingbirds. Dissertation, University of Connecticut.
- Rico-Guevara A, Fan T-H, Rubega MA. 2015.** Hummingbird tongues are elastic micropumps. *Proceedings of the Royal Society B: Biological Sciences* **282**:20151014 DOI [10.1098/rspb.2015.1014](https://doi.org/10.1098/rspb.2015.1014).
- Rico-Guevara A, Rubega MA. 2011.** The hummingbird tongue is a fluid trap, not a capillary tube. *Proceedings of the National Academy of Sciences of the United States of America* **108**:9356–9360 DOI [10.1073/pnas.1016944108](https://doi.org/10.1073/pnas.1016944108).
- Roberts WM. 1996.** Hummingbirds' nectar concentration preferences at low volume: the importance of time scale. *Animal Behavior* **52**:361–370 DOI [10.1006/anbe.1996.0180](https://doi.org/10.1006/anbe.1996.0180).
- Rubega MA. 2000.** Feeding in birds: approaches and opportunities. In: Schwenk K, ed. *Feeding: form, function and evolution in tetrapod vertebrates*. 39. San Diego: Academic Press, 395–408.
- Scharnke H. 1931.** Beiträge zur morphologie und entwicklungsgeschichte der zunge der Trochilidae, Meliphagidae und Picidae. *Journal of Ornithology* **79**:425–491 DOI [10.1007/BF01955537](https://doi.org/10.1007/BF01955537).
- Scharnke H. 1932.** Ueber den Bau der Zunge der Nectariniidae, Promeropidae und Drepanididae nebst Bemerkungen zur Systematik der blütenbesuchenden Passeres. *Journal of Ornithology* **80**:114–123 DOI [10.1007/BF01995024](https://doi.org/10.1007/BF01995024).
- Scharnke H. 1933.** Ueber eine rückgebildete Honigfresser-Zunge. *Journal of Ornithology* **81**:355–359 DOI [10.1007/BF01955206](https://doi.org/10.1007/BF01955206).
- Schwenk K. 2000.** An introduction to tetrapod feeding. In: Schwenk K, ed. *Feeding: form, function and evolution in tetrapod vertebrates*. San Diego: Academic Press, 21–61.
- Schwenk K. 2001.** Extrinsic versus intrinsic lingual muscles: a false dichotomy. *Bulletin of the Museum of Comparative Zoology* **156**:219–235.
- Shah SW, Aziz NA. 2014.** Morphology of the lingual apparatus of the Swiftlet, *Aerodramus fuciphagus* (Aves, Apodiformes, Apodidae). *JMAU* **2**:100–103.
- Shufeldt RW. 1900.** On the osteology of the woodpeckers. *Proceedings of the American Philosophical Society* **39**:578–622.
- Skieresz-Szewczyk K, Jackowiak H. 2014.** Scanning electron microscopy investigation of the filter-feeding apparatus in the domestic goose (*Anser anser* f. *Domestica*) and the Domestic Duck (*Anas Platyrhynchos* f. *Domestica*). In: Méndez-Vilas A, ed. *Microscopy: advances in scientific research and education*. Badajoz: Formatex Research Center 84–88.
- Smith ML, Yanega GM, Ruina A. 2011.** Elastic instability model of rapid beak closure in hummingbirds. *Journal of Theoretical Biology* **282**:41–51 DOI [10.1016/j.jtbi.2011.05.007](https://doi.org/10.1016/j.jtbi.2011.05.007).

- Soley JT, Tivane C, Crole MR. 2015.** Gross morphology and topographical relationships of the hyobranchial apparatus and laryngeal cartilages in the ostrich (*Struthio camelus*). *Acta Zoologica* **96**:442–451 DOI [10.1111/azo.12088](https://doi.org/10.1111/azo.12088).
- Stiles FG. 1981.** Geographical aspects of bird-flower coevolution, with particular reference to Central America. *Annals of the Missouri Botanical Garden* **68**:323–351 DOI [10.2307/2398801](https://doi.org/10.2307/2398801).
- Stiles FG. 1995.** Behavioral, ecological and morphological correlates of foraging for arthropods by the hummingbirds of a tropical wet forest. *The Condor* **97**:853–878 DOI [10.2307/1369527](https://doi.org/10.2307/1369527).
- Tivane C, Rodrigues MN, Soley JT, Groenwald HB. 2011.** Gross anatomical features of the oropharyngeal cavity of the ostrich (*Struthio camelus*). *Pesquisa Veterinária Brasileira* **31**:543–550.
- Tomlinson CAB. 2000.** Feeding in paleognathous birds. In: Schwenk K, ed. *Feeding: form, function and evolution in tetrapod vertebrates*. San Diego: Academic Press, 359–394.
- Villard P, Cuisin J. 2004.** How do woodpeckers extract grubs with their tongues? A study of the Guadeloupe Woodpecker (*Melanerpes herminieri*) in the French West Indies. *Auk* **121**:509–514 DOI [10.1642/0004-8038\(2004\)121\[0509:HDWEGW\]2.0.CO;2](https://doi.org/10.1642/0004-8038(2004)121[0509:HDWEGW]2.0.CO;2).
- Vogel S. 2011.** Surface tension helps a tongue grab liquid. *Proceedings of the National Academy of Sciences of the United States of America* **108**:9321–9322 DOI [10.1073/pnas.1107208108](https://doi.org/10.1073/pnas.1107208108).
- Weinstein BG, Graham CH. 2017.** Persistent bill and corolla matching despite shifting temporal resources in tropical hummingbird-plant interactions. *Ecology Letters* **20**:326–335 DOI [10.1111/ele.12730](https://doi.org/10.1111/ele.12730).
- Weymouth RD, Lasiewski RC, Berger AJ. 1964.** The tongue apparatus in hummingbirds. *Cells Tissues Organs* **58**:252–270 DOI [10.1159/000142586](https://doi.org/10.1159/000142586).
- Xue T, Trent JS, Osseo-Asare K. 1989.** Characterization of Nafion<sup>®</sup> membranes by transmission electron microscopy. *Journal of Membrane Science* **45**:261–271 DOI [10.1016/S0376-7388\(00\)80518-9](https://doi.org/10.1016/S0376-7388(00)80518-9).
- Yanega GM. 2007.** A comparative study of the functional morphology and ecology of insectivory in hummingbirds. Dissertation. University of Connecticut.
- Yanega GM, Rubega MA. 2004.** Feeding mechanisms: hummingbird jaw bends to aid insect capture. *Nature* **428**:615 DOI [10.1038/428615a](https://doi.org/10.1038/428615a).
- Zusi RL. 2013.** Introduction to the skeleton of hummingbirds (Aves: Apodiformes, Trochilidae) in functional and phylogenetic contexts. *Ornithological Monographs* **77**:1–94 DOI [10.1525/om.2013.77.1.1](https://doi.org/10.1525/om.2013.77.1.1).
- Zweers GA, Berge JV, Berkhoudt H. 1997.** Evolutionary patterns of avian trophic diversification. *Zoology* **100**:25–57.
- Zweers G, De Jong F, Berkhoudt H, Vanden Berge JC. 1995.** Filter feeding in flamingos (*Phoenicopterus ruber*). *The Condor* **97**:297–324 DOI [10.2307/1369017](https://doi.org/10.2307/1369017).