

ARTICLE OPEN



Acute stress induces severe neural inflammation and overactivation of glucocorticoid signaling in interleukin-18-deficient mice

Kyosuke Yamanishi^{1,2}, Nobutaka Doe^{3,4}, Keiichiro Mukai¹, Takuya Hashimoto^{1,2}, Naomi Gamachi², Masaki Hata², Yuko Watanabe⁵, Chiaki Yamanishi⁵, Hideshi Yagi⁶, Haruki Okamura² and Hisato Matsunaga^{1,2}✉

© The Author(s) 2022

Interleukin-18 (IL18) is an inflammatory cytokine that is related to psychiatric disorders such as depression and cognitive impairment. We previously found that IL18 deficiency may cause hippocampal impairment, resulting in depression-like behavioral changes. However, the potential role of IL18 in stressful conditions remains uncertain. In the present study, we examined the effect of IL18 on neural inflammation and stress tolerance during acute stress. Littermate *Il18*^{+/+} and *Il18*^{-/-} mice were exposed to a single restraint stress for 6 h, and all assessments were performed 18 h after the mice were released from the restraint. In *Il18*^{-/-} mice exposed to acute stress, the immobility times in both the forced swim test and tail suspension test were decreased, although no difference was observed in *Il18*^{+/+} mice. *Il1β*, *Il6*, and *Tnfa* expression levels in the hippocampus of stressed *Il18*^{-/-} mice were significantly higher than those in the other groups. Moreover, the numbers of astrocytes and microglia, including those in the active form, were also increased compared with those in other groups. Regarding the molecular mechanism, the *HSF5* and *TTR* genes were specifically expressed in stressed *Il18*^{-/-} mice. As a potential treatment, intracerebral administration of IL18 to *Il18*^{-/-} mice resulted in partial recovery of changes in behavioral assessments. Our results revealed that IL18-deficient mice were more sensitive and had a longer response to acute stress than that in normal mice. In addition, neural inflammation and augmentation of glucocorticoid signals caused by stress were more intense and remained longer in *Il18*^{-/-} mice, resulting in behavioral changes. In conclusion, IL18 might be an indispensable factor that modulates the stress response and maintains balance between neural inflammation and glucocorticoid signaling.

Translational Psychiatry (2022)12:404; <https://doi.org/10.1038/s41398-022-02175-7>

INTRODUCTION

In humans, stressful conditions are essentially universal, often cause severe problems, and may ultimately lead to absences or resignation from work. Indeed, many stressful situations occur in daily life. Moreover, extreme stress can cause physical and/or psychiatric disorders such as adjustment disorder and major depressive disorder (MDD), resulting in increased negative social interactions for such patients [1]. Therefore, stress management is important for a healthy life.

The immune system may contribute to the fundamental mechanisms of psychiatric disorders caused by stressful conditions, especially MDD. Under normal conditions, the hypothalamic-pituitary-adrenal (HPA) axis monitors and modulates immune balance through various hormones such as glucocorticoids [2–5]. However, stressful events induce HPA axis hyperactivity, and continuous stress leads to corticoid resistance, resulting in an excessive inflammatory response, which is a crucial risk factor for developing MDD [2, 6, 7]. A previous meta-analysis

showed that serum tumor necrosis factor (TNF) α , interleukin (IL) 6, and IL18 were increased in MDD patients [8, 9]. Furthermore, TNF α and IL18 levels were greater in the hippocampus of an animal model of MDD than those in controls [10]. Therefore, stress and stress-induced psychiatric symptoms may be closely associated with the immune system, even though these direct interactions have not been clarified.

IL18 is a proinflammatory cytokine that was found to induce interferon- γ in 1995 [11]. IL18 has two forms, an active 18-kDa mature form, and a non-active 24-kDa precursor form. Cleaved caspase-1 metabolizes the precursor form of IL18 to generate the active form [12–15]. In our previous studies, we found that IL18 was associated with energy metabolism and psychiatric disorders such as depression [16–18]. Regarding neural function, IL18 exists in neural cells of the brain in a precursor form, and its deficiency leads to hippocampal impairment and a depressive-like phenotype [18, 19]. Thus, IL18 is closely related to neural function and psychiatric phenotypes such as depression as well as the immune

¹Department of Neuropsychiatry, School of Medicine, Hyogo Medical University, Nishinomiya, Hyogo 6638501, Japan. ²Department of Psychoimmunology, School of Medicine, Hyogo Medical University, Nishinomiya, Hyogo 6638501, Japan. ³Laboratory of Neurogenesis and CNS Repair, Institute for Advanced Medical Sciences, Hyogo Medical University, Nishinomiya, Hyogo 6638501, Japan. ⁴Department of Occupational Therapy, School of Rehabilitation, Hyogo Medical University, Nishinomiya, Hyogo 6638501, Japan. ⁵Hirakata General Hospital for Developmental Disorders, Hirakata, Osaka 5730122, Japan. ⁶Department of Anatomy and Cell Biology, School of Medicine, Hyogo Medical University, Nishinomiya, Hyogo 6638501, Japan. ✉email: hisa1311@hyo-med.ac.jp

Received: 11 July 2022 Revised: 6 September 2022 Accepted: 12 September 2022

Published online: 23 September 2022

system. However, we previously only evaluated hippocampal function under IL18 deficiency, and no treatment was examined.

Therefore, we examined the potential role of IL18 in the hippocampus in response to a single acute stress. For this purpose, we performed the following five assessments in the current study: (1) assessment of behavioral changes in IL18-deficient mice after acute stress, (2) measurement of corticosterone release and its receptor expression in the hippocampus, (3) evaluation of differences in neurogenesis and neural inflammation with regard to cytokine expression and astrocyte and microglia density, (4) comparison of comprehensive molecular differences using RNA sequencing (RNA-Seq) and the results of our previous study, and (5) examination of the behavioral changes after intracerebroventricular administration of IL18.

MATERIALS AND METHODS

Animals and stress treatment

Male *Il18*^{-/-} mice were generated on a C57Bl/6 background as described previously [20]. C57Bl/6 *Il18*^{+/+} male littermates were used as controls. All mice were housed in groups of four to five in polycarbonate cages with free access to water and standard food. The colony room was monitored and automatically maintained under the following conditions: room temperature (22 ± 1 °C), humidity (50–60%), and a 12-h light/dark cycle (lights on at 08:00 am).

Mice were divided into four groups randomly: (1) *Il18*^{+/+} mice without stress, (2) *Il18*^{+/+} mice with stress, (3) *Il18*^{-/-} mice without stress, and (4) *Il18*^{-/-} mice with stress. The stress consisted of a single restraint stress starting at 10:00 am and lasting for 6 h. During the stress, the mice could not drink water or eat food. Mice in the non-stressed groups had free access to water and food. After the stress, mice were immediately released and free for 18 h. After 18 h, mice underwent behavioral assessments or were sacrificed (Supplementary Fig. 1A).

Twelve mice per group were used for behavioral assessments, six were used for RNA-Seq, reverse transcription quantitative polymerase chain reaction (RT-qPCR), and western blotting assays, and five were used for immunostaining. An enzyme-linked immunosorbent assay (ELISA) was performed using serum samples from mice (*n* = 12 from each group). Twelve mice per group were used for the rescue experiment involving intracerebral administration of IL18. All animal experiments were conducted according to the Guide for the Care and Use of Laboratory Animals published by the National Institutes of Health, and all protocols were approved by the Animal Care Committee of Hyogo Medical University (Hyogo, Japan; approval nos. #28041, #19-030).

Behavioral analysis

Behavioral differences between groups were assessed with an open field test (OFT), a forced swim test (FST), and a tail suspension test (TST). These assessments were performed according to previously described procedures with minor modifications [18, 21, 22].

Open field test

Spontaneous locomotor activity in a novel environment was tested in the OFT. A cubic open field box made of transparent acrylic plates without a ceiling (45 × 45 × 45 cm) was placed in a ventilated soundproof chamber. An overhead incandescent light bulb provided room lighting of ~140–150 lx at the center of the test arena. Each mouse was placed at the center of the test chamber and could freely explore the open field arena for 10 min. Experimental sessions were conducted between 10:00 and 12:00 am every day to minimize the effects of temporal factors such as circadian rhythm. Behavior was recorded during each session and analyzed later. The distance traveled in the open field was calculated using a computerized video-based tracking system (Be Chase ver.2021, ISONIX Co. Ltd., Kobe, Japan). The total distance that mice moved in 2 min was measured.

Forced swim test

The FST was performed to assess depressive-like behavioral changes. A cylindrical tank (height: 35 cm diameter: 18 cm) was used for the FST. The water level was 25 cm from the bottom, and the temperature was 24 to 26 °C. Mice were individually placed in the cylinder, allowed to swim freely

inside for 6 min, and recorded. The software program (Be Chase ver.2021, ISONIX Co. Ltd., Kobe, Japan) calculated the duration of immobility by summing the time segments (in seconds) that the mouse swam below the specified threshold velocity of 2.8 cm/s. The optimum threshold was determined by comparing scores rated manually from video images with scores from the automated device in preliminary studies.

Tail suspension test

The total immobility time induced by tail suspension was measured. The mice were suspended 30 cm above the floor by an adhesive tape that was placed ~1 cm from the end of the tail. This test was performed for 5 min, and movements were recorded. The video was analyzed by two observers blinded to the group allocation.

Sample collection

Mice were euthanized under deep anesthesia induced by inhalation of 5% isoflurane (overdose). After shallow or the absence of breathing was confirmed, blood was immediately collected from the heart. Then, the hippocampi were removed, immediately placed in liquid nitrogen, and stored at -80 °C until use.

RNA purification

Total RNA purification was performed as previously described [19]. Briefly, we extracted total RNA using an ISOGEN kit (cat. no. 311-02501, Wako Pure Chemical Industries, Ltd., Osaka, Japan), following the manufacturer's protocol, and then treated the RNA with 5 U of RNase inhibitor and 5 U of DNase I at 37 °C for 30 min. After purification by phenol/chloroform and ethanol precipitation, total RNA was dissolved in sterilized and de-ionized distilled water.

RNA-Seq

We outsourced the RNA-Sequencing analysis to Takara Bio Inc. (Mie, Japan). A SMART-Seq[®] v4 Ultra[®] Low Input RNA Kit for Sequencing (Illumina K.K., Tokyo, Japan) was used according to the manufacturer's protocol. We compared the gene expression profiles of the hippocampus between stressed *Il18*^{+/+} mice and stressed *Il18*^{-/-} mice (*n* = 3 per group). Details of RNA-Seq can be found on the Gene Expression Omnibus website (GSE207669). FASTQ files were aligned to the GRCh38 assembly using the DRAGEN Bio-IT Platform (Illumina). Genes with a false discovery rate < 0.3 were identified as differentially expressed genes using edgeR (Ver. 3.30.3, <http://bioconductor.org/biocLite.R>). A heat map was generated using the Heatplus package (Version 3.2.0, <https://github.com/alexploner/Heatplus>) available in Bioconductor using the regHeatmap function in the R statistical environment.

Ingenuity pathway analysis (IPA)

IPA (QIAGEN Digital Insights, Redwood City, CA, USA) was used to analyze the functions of genes extracted by RNA-Seq as previously described [23]. Core analysis was performed to analyze the functions of extracted molecules as follows: tissue, hippocampus; all other settings, default. The network explorer of IPA was used with default settings to identify molecule-molecule interactions and pathways between molecules [19].

RT-qPCR

RT-qPCR was performed as previously described with minor modifications [23, 24]. Briefly, total RNA (5 ng/reaction) was analyzed with the RNA-direct SYBR Green Real-Time PCR Master Mix: One-step qPCR kit (Toyobo Co. Ltd., Tokyo, Japan) following the manufacturer's protocol. Samples were examined in duplicate reactions in 384-well plates. The median threshold cycle values were used to calculate fold changes between the groups. The following cycling protocols were used with the QuantiStudio[™] 12 K Flex system (Thermo Fisher Scientific, Inc.): 30 s at 90 °C and 20 min at 61 °C for reverse transcription, followed by 45 cycles of 98 °C for 1 s, 67 °C for 15 s, and 74 °C for 35 s. Fold-change values were normalized to the glyceraldehyde-3-phosphate dehydrogenase (*Gapdh*) level using the relative standard curve method. Primer sequences for RT-qPCR are shown in Supplementary Table 1.

Western blotting

Protein extraction from the mouse hippocampus and western blotting were performed as previously described [17, 25]. Briefly, samples were

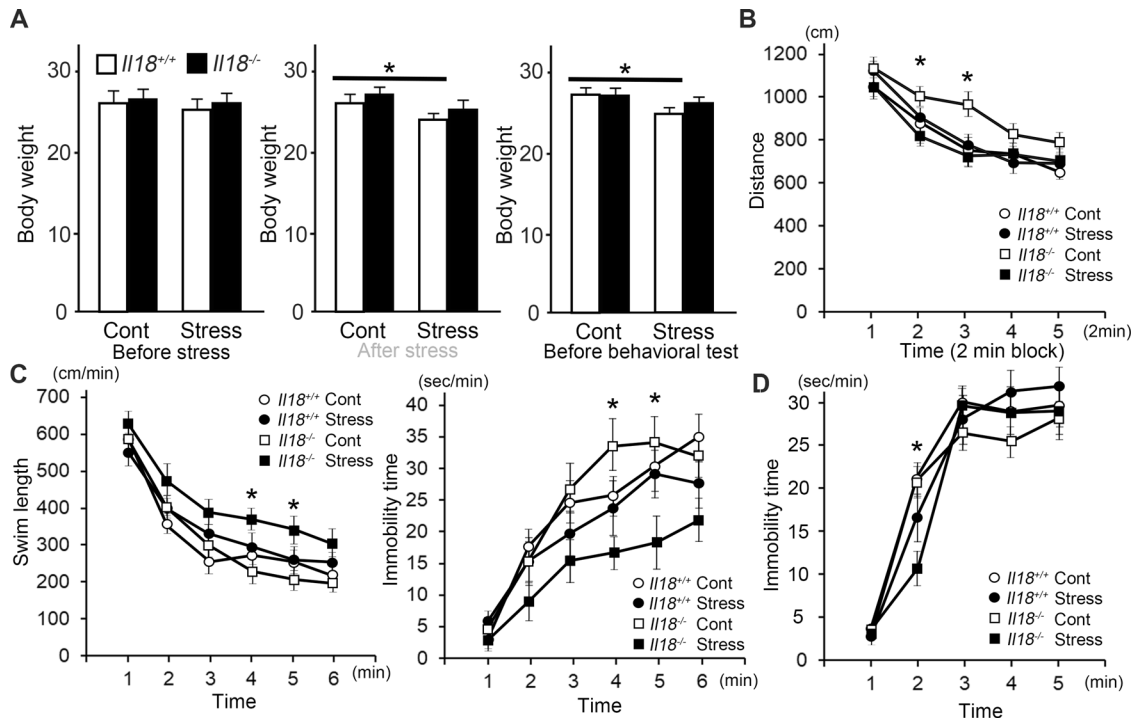


Fig. 1 *Il18^{-/-}* mice showed behavioral changes after stress. **A** The body weights of each group before stress treatment, after treatment, and before behavioral tests are shown. The behavioral tests results, including the open field test (**B**), forced swim test (**C**), and tail suspension test (**D**), are shown. **B** The graph shows the distance traveled by each mouse during 2 min in the open field test. **C** In the forced swim test, stressed *Il18^{-/-}* mice had a longer swimming distance (left) and less immobility time (left) than those of non-stressed mice, and these phenotypes were not observed in *Il18^{+/+}* mice. **D** In the tail suspension test, stressed *Il18^{-/-}* mice showed a decreased immobility time, similar to the forced swim test. * $p < 0.05$ (stressed *Il18^{-/-}* mice versus non-stressed mice), ($n = 12$ per group).

incubated in Laemmli sample buffer for 5 min at 95 °C, electrophoresed on a 10–20% sodium dodecyl sulfate polyacrylamide gel, and transferred onto polyvinylidene difluoride membranes (Hybond-P, Amersham Bioscience, Little Chalfont, UK). The primary antibodies were as follows: monoclonal rabbit anti- β -actin (cat. no. #4967; Cell Signaling Technology, Inc. (CST), Danvers, MA, USA) or anti-GAPDH (cat. no. #3683, CST) as a loading control, rabbit anti-heat shock transcription factor 5 (HSF5) polyclonal antibody (cat. No. MBS2520556, MyBioSource, San Diego, CA, USA), rabbit anti-gamma-aminobutyric acid type A receptor subunit rho1 (GABRR1) polyclonal antibody (cat. no. 25899-1-AP; Proteintech Japan, Tokyo, Japan), and rabbit anti-transferrin receptor polyclonal antibody (TTR; cat. no. sc-13098; Santa Cruz Biotechnology, Inc., Dallas, TX, USA). All membranes were blocked using 5% skim milk in phosphate-buffered saline containing 0.1% Triton X-100 and incubated with primary antibodies at 4 °C overnight. Then, the membranes were incubated with horseradish peroxidase-conjugated secondary antibodies (#NA9340V and #RPN1025; GE Healthcare, Amersham, UK). Antibody reactions were visualized with an LAS-4010 photo-image analyzer (Fuji Photo Film Co, Ltd, Tokyo, Japan). The density of specific protein bands was analyzed using ImageJ software (<http://rsbweb.nih.gov/ij/>, version 1.6), and the results were normalized to the loading control levels.

ELISA

Serum levels of corticosterone, IL18, and TTR were measured using an ELISA. ELISA kits for corticosterone, IL18, and TTR were purchased from Enzo Life Sciences, Inc. (cat. no. ADI-900-097; Farmingdale, NY, USA), Medical & Biological Laboratories Co., Ltd. (cat. no. 7625; Nagoya, Aichi, Japan), and Immunology Consultants Laboratory, Inc. (cat. no. E-90PRE; Portland, OR, USA), respectively. All ELISAs were performed according to the manufacturers' protocols.

Immunofluorescence staining

Immunofluorescence staining was performed to reveal differences in neurogenesis and neuroinflammation. Mice were deeply anesthetized with 5% isoflurane and transcardially perfused with 50 ml of saline and 4% periodate-lysine-paraformaldehyde fixative. Then, the fixed brains were

removed. Coronal brain slices with 20 μ m thickness that included the dentate gyrus of the hippocampus were prepared. These sections were incubated at 90 °C for 40 min with an antigen retrieval reagent (Histo VT One, cat. no. 06380, NACAL TESQUE, INC. Kyoto, Japan) and blocked with 5% bovine serum albumin for 1 hour. The sections were stained overnight at 4 °C with the following antibodies: Ki67 (1:200, #550609, BD Biosciences, NJ, USA), doublecortin (DCX; 1:2000, #AB2253, EMD Millipore, Burlington, MA, USA), GFAP (1:200, cat. no. #12389, CST), and IBA1 (1:500, cat. no. #019-19741, FUJIFILM Wako Pure Chemical Corporation, Osaka, Japan). For immunofluorescence staining, fluorochrome-conjugated goat anti-guinea pig IgG H&L secondary antibody (dilution 1:200, Alexa Fluor® 488, cat. no. ab150185; Abcam, Cambridge, UK) or goat anti-rabbit IgG H&L secondary antibody (dilution 1:1000, Alexa Fluor® 594, cat. no. ab150078; Abcam) was added for 2 h at room temperature. Then, the sections were cover-slipped with Vectashield mounting medium with 4,6-diamidino-2-phenylindole (DAPI) (cat. no. H-1800; Vector Laboratories, Inc., Burlingame, CA, USA) and visualized with a confocal microscope (LSM780, Carl Zeiss Co. Ltd., Tokyo, Japan). The images were scanned using ZEN Imaging Software (Carl Zeiss Co. Ltd.) for analysis. Positive cells and their density were counted and averaged as previously described (8–10 sections/mouse) using ImageJ software [18, 26, 27]. The branch length of microglia was quantified as previously shown [28].

Intracerebral IL18 administration

To evaluate behavioral changes in stressed *Il18^{-/-}* mice, IL18 was administered into the lateral ventricles. Mice were deeply anesthetized with isoflurane (5% for induction, 2% for maintenance), and 2 μ l (1 μ g/ μ l) of IL18 was slowly injected. The point of injection into the lateral ventricle was 2 mm lateral and 0.8 mm caudal from bregma as previously described [18]. After injection, mice were placed in their home cage for 24 h. Then, mice were subjected to stress as described in the 'Animals and stress treatment' section (Supplementary Fig. 1B).

Statistical analysis

All results are expressed as means \pm standard error of the mean and were analyzed using Sigmaplot™ software (version 11.0; Systat Software Inc., San

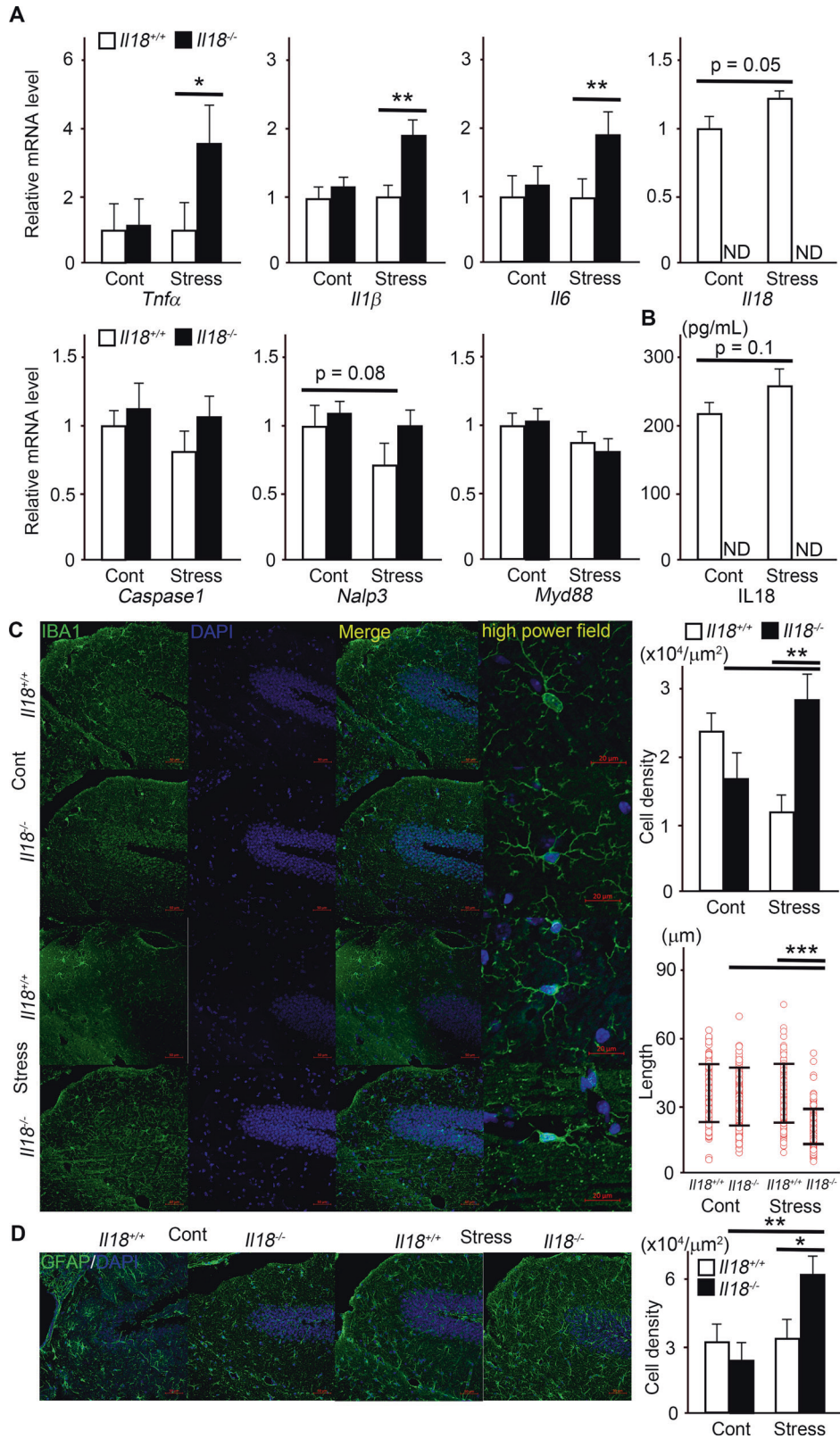


Fig. 2 Neural inflammation in the hippocampus remained longer in *Il18*^{-/-} mice exposed to a single stress than that in *Il18*^{+/+} mice. **A** The relative mRNA expression levels of inflammatory-related genes are shown. **B** The serum IL18 level was measured in each group. The immunofluorescence staining results for IBA1 (**C**) and GFAP (**D**) are shown. The cell density and branch length of microglia (**C**) and astrocytes (**D**) are shown on the right side. * $p < 0.05$, ** $p < 0.01$, *** $p < 0.001$. (**A**; $n = 6$ per group, **B**; $n = 12$ per group, **C**; cell density; length; $n = 4$ per group, **D**; cell density; $n = 4$ per group).

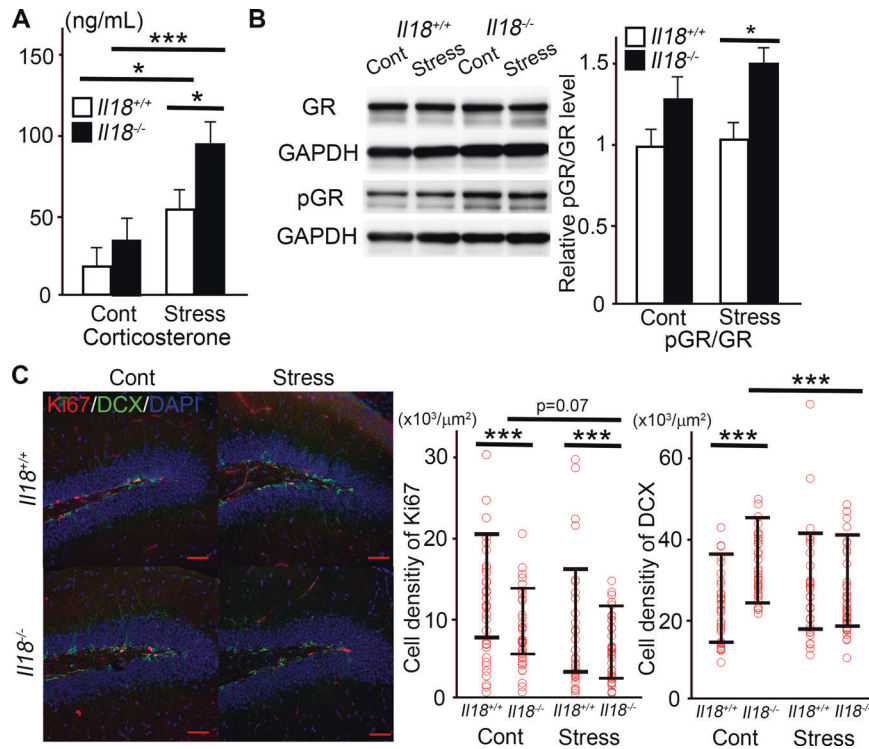


Fig. 3 The assessment of glucocorticoid signaling and neurogenesis mediated by a single stress. **A** The serum corticosterone level in each group is shown. **B** The ratio of glucocorticoid receptors and phosphorylated glucocorticoid receptors in stressed *Il18*^{-/-} mice was increased compared with that in other groups. **C** Immunofluorescence staining of Ki67 and doublecortin (DCX) is shown, and the graphs indicate the density of Ki67- and DCX-positive cells in each group. (red; Ki67, DCX; green, blue; DAPI) **p* < 0.05, ****p* < 0.001. (**A**; *n* = 12, **B**; *n* = 6, **C**; *n* = 4 per group).

Jose, CA, USA). For statistical analysis of the behavioral tests, a repeated measures ANOVA with genotype (+/+ or -/-) or with stress as the between-subject factor and repeated measures (e.g., time) as the within-subject factor, was conducted on the data for each test. ELISA, RT-qPCR, western blot, and immunochemistry data were analyzed by ANOVA first, and if significance was found, the Holm-Sidak or Tukey method was applied. Differences were considered statistically significant when *p* < 0.05. All statistical analyses were performed as previously described [18].

RESULTS

Behavioral changes with acute restraint stress

The body weight of *Il18*^{+/+} mice was significantly decreased in stressed mice and remained decreased after one night, even though there was no difference between stressed and non-stressed *Il18*^{-/-} mice before stress was applied (Fig. 1A). In the OFT, the total distance traveled by *Il18*^{-/-} mice was decreased after stress; however, the distance traveled by *Il18*^{+/+} mice was not altered by stress, and no significant difference was observed between stressed *Il18*^{-/-} mice and *Il18*^{+/+} mice (Fig. 1B). In the FST, *Il18*^{-/-} mice exhibited a significant increase in swimming distance and a decrease in immobility time after stress, and these effects were not observed in *Il18*^{+/+} mice (Fig. 1C). In the TST, mice exhibited behavioral changes similar to those in the FST; the immobility time was only slightly decreased at 2 min but this was still statistically significant (Fig. 1D).

Inflammatory response in the hippocampus after stress

Inflammatory cytokine expression was measured to evaluate the inflammatory response after acute restraint stress. The mRNA expression levels of *Tnfa*, *IL1β*, and *Il6* were significantly increased in *Il18*^{-/-} mice after stress but were not increased in *Il18*^{+/+} mice (Fig. 2A). However, *Il10* expression was not significantly different and *Il18* expression was slightly increased in *Il18*^{+/+} mice after

stress (Fig. 2A, data not shown). Contrary to our predictions, no significant difference in inflammasome-related molecules, including *Caspase1*, *Nalp3*, and *Myd88*, was observed between stressed *Il18*^{-/-} mice and *Il18*^{+/+} mice (Fig. 2A). Although the same tendency as that of *IL18* expression in serum was observed, i.e., a slight but not significant increase in *Il18*^{+/+} mice after stress (Fig. 2B), the serum *IL1β* and *IL6* levels were under the detection limit (data not shown). We next examined neural inflammation in the hippocampus based on increases in inflammatory cytokines in *Il18*^{-/-} mice after stress. IBA1-positive cells were significantly increased in *Il18*^{-/-} mice after stress, and shortened microglia branches could be observed only in *Il18*^{-/-} mice after stress (Fig. 2C). Moreover, similar to IBA1, the number of GFAP-positive cells was also increased only in *Il18*^{-/-} mice after stress (Fig. 2D).

Glucocorticoid receptors and neurogenesis in the hippocampus

To evaluate the stress response, the stress-response hormone corticosterone was measured in both the control and stressed groups. As described above, serum was extracted 18 hours after restraint stress was completed. Corticosterone was significantly increased after stress in both *Il18*^{+/+} and *Il18*^{-/-} mice, and the corticosterone level in stressed *Il18*^{-/-} mice was higher than that in stressed *Il18*^{+/+} mice (Fig. 3A). The expression of phosphorylated and non-phosphorylated glucocorticoid receptor was compared as shown in Fig. 3B, and a significant increase in the phosphorylated glucocorticoid receptor/glucocorticoid receptor ratio was observed in stressed *Il18*^{-/-} mice but not in stressed *Il18*^{+/+} mice. Upregulated glucocorticoid signals can induce inhibition of hippocampal neurogenesis [29–31]. Therefore, we next assessed hippocampal neurogenesis using immunohistochemistry according to our previous study [18]. Significantly fewer Ki67-positive cells were observed in *Il18*^{-/-} mice than in *Il18*^{+/+}

Table 1. Nine genes with a false discovery rate <0.30 were extracted from the RNA sequencing results of *Il18*-deficient mice and assigned GenBank accession numbers.

Gene symbol	Entrez gene name	GenBank ID
<i>Adprh1</i>	ADP-ribosylhydrolase like 1	NM_172750
<i>Ccdc153</i>	coiled-coil domain containing 153	NM_001081369
<i>Cryab</i>	crystallin, alpha B	NM_009964
<i>Gabbr1</i>	gamma-aminobutyric acid (GABA) C receptor, subunit rho 1	NM_008075
<i>Hsf5</i>	heat shock transcription factor family member 5	NM_001045527
<i>Il18</i>	interleukin 18	NM_008360
<i>Layn</i>	layilin	NM_001033534
<i>Nnmt</i>	nicotinamide N-methyltransferase	NM_010924
<i>Piwil2</i>	piwi-like RNA-mediated gene silencing 2	NM_021308
<i>Rslcan18</i>	regulator of sex-limitation candidate 18	NM_001256052

following results: (1) stressed *Il18*^{-/-} mice showed hyperactivity in behavioral assessments compared with other groups; (2) neural inflammation induced by a single stress remained much longer in *Il18*-deficient mice, suggesting that *Il18* may modulate the stress response; (3) stressed *Il18*^{-/-} mice exhibited higher serum corticosterone and glucocorticoid receptor phosphorylation levels in the hippocampus resulting in a slight suppression of neurogenesis; (4) specific genes such as *Hsf5* and *TTR* were extracted from stressed *Il18*^{-/-} mice in the molecular analysis; and (5) the behavioral changes induced by acute stress were slightly attenuated by intracerebral *Il18* administration.

The FST and TST are common methods used to assess depression-like phenotypes [34, 35]. Typically, an increased immobility time and decreased swim distance indicate depressive symptoms in animals [34, 35]. However, some reports have suggested that the opposite behavioral changes, i.e., decreased immobility and increased swimming distance, are observed when mice exhibit anxiety and fear [36, 37]. Moreover, Yamada et al (2000) reported that mice showed less immobility in the FST because of 'inappropriate coping responses' [37]. In our behavioral results shown in Fig. 1, the immobility time of stressed *Il18*^{-/-} mice in the FST and TST was significantly increased, which was not observed in stressed *Il18*^{+/+} mice. Therefore, our results suggested that *Il18*^{-/-} mice might exhibit behavioral changes including heightened anxiety in response to acute restraint stress because of decreased stress tolerance, and they may be regarded as a diathesis-stress model.

Inflammatory cytokines and neural inflammation are major factors that mediate depression and anxiety. To examine the relationship between the behavioral changes in Fig. 1 and the inflammatory response linked to *Il18*, we measured inflammatory and anti-inflammatory cytokine expression. As shown in Fig. 2A, *Tnfa*, *Il1β*, and *Il6* expression in stressed *Il18*^{-/-} mice was significantly greater than that in the other groups. Moreover, neuroinflammation in the hippocampus was assessed by staining for IBA1, a microglial marker, and GFAP, an astrocyte marker. According to Fig. 2C, D, the numbers of GFAP- and IBA1-positive cells were significantly increased in stressed *Il18*^{-/-} mice compared with those in the other groups. In addition, the active microglia in stressed *Il18*^{-/-} mice had a reduced total process length. In several models of depression, the expressions of inflammatory cytokines such as *Tnfa*, *Il1b*, and *Il6* in the hippocampus were increased and higher microglial activation in the hippocampus was observed compared with controls [38–41]. In summary, neural inflammation continued for a prolonged time in *Il18*^{-/-} mice but was not observed in *Il18*^{+/+} mice at 18 h after stress, suggesting that *Il18* plays a role in stress-mediated inflammatory regulation.

Stress induces HPA axis hyperactivity [6], and corticosterone is a major hormone that immediately responds to stress [42]. Chronic

glucocorticoid exposure induces inhibition of neurogenesis in the dentate gyrus, resulting in depression and anxiety disorder [43–45]. However, acute stress, such as 3 h of immobilization stress, can induce an increase in corticosterone, resulting in increased neurogenesis in the dentate gyrus of rats [46]. During neurogenesis in the dentate gyrus, stress-induced corticosterone activates microglia to maintain homeostasis of neurogenesis in the hippocampus [47]. Moreover, microglia can induce factors to modulate neural proliferation and survival [48]. Glucocorticoid-induced activation of glucocorticoid receptors in the hippocampus mediates microglial activation, resulting in hippocampal neuroinflammation and depressive-like behaviors [49].

As shown in Fig. 3A, the serum corticosterone level was not different between non-stressed *Il18*^{+/+} and *Il18*^{-/-} mice. However, serum corticosterone was significantly increased in both stressed *Il18*^{+/+} and *Il18*^{-/-} mice compared with that in non-stressed control mice. In addition, the corticosterone level was much higher in stressed *Il18*^{-/-} mice than that in stressed *Il18*^{+/+} mice. In stressed *Il18*^{-/-} mice, glucocorticoid receptor phosphorylation was significantly increased compared with that in non-stressed mice (Fig. 2B), which is a result of the increased corticosterone level [50]. As shown in Fig. 3C, although the number of DCX-positive cells was not different between the stressed groups, the number of Ki-67-positive cells was significantly decreased in *Il18*^{-/-} mice. In addition, the number of Ki-67-positive cells in stressed *Il18*^{-/-} mice was slightly but not significantly decreased compared with that in non-stressed mice. Neurogenesis was assessed 1 day after stress application, and more time may be required to determine the effects on neurogenesis because granule cells in the dentate gyrus require more than 2 weeks to mature [51]. In summary, our results suggested that the longer duration of neural inflammation in the hippocampus of stressed *Il18*^{-/-} mice was related to increased corticosterone levels and might exert a significant influence on neurogenesis. Moreover, our results also suggested that these mice require a longer time to attenuate stress-induced neuroinflammation and return to a homeostatic state.

RNA-Seq was performed to identify molecules specifically expressed in *Il18*-deficient mice exposed to stress. Figure 4A and Table 1 show nine molecules that were identified. RT-qPCR was performed to determine whether these molecules were specifically associated with stress in *Il18*-deficient mice. Based on this analysis, *Gabbr1* and *Hsf5* were suggested to specifically respond to stress in *Il18*^{-/-} mice (Fig. 4B). Then, their protein expression was confirmed by western blotting (Fig. 4C), and HSF5 was shown to be significantly upregulated, similar to the RT-qPCR results. HSFs are indispensable factors that respond to acute stress [52]. However, to our knowledge, no reports have described the relationship among HSF5, stress, and psychiatric disorders. Thus, these results were novel and suggested that HSF5 might be a critical factor that regulates the stress response along with *Il18*.

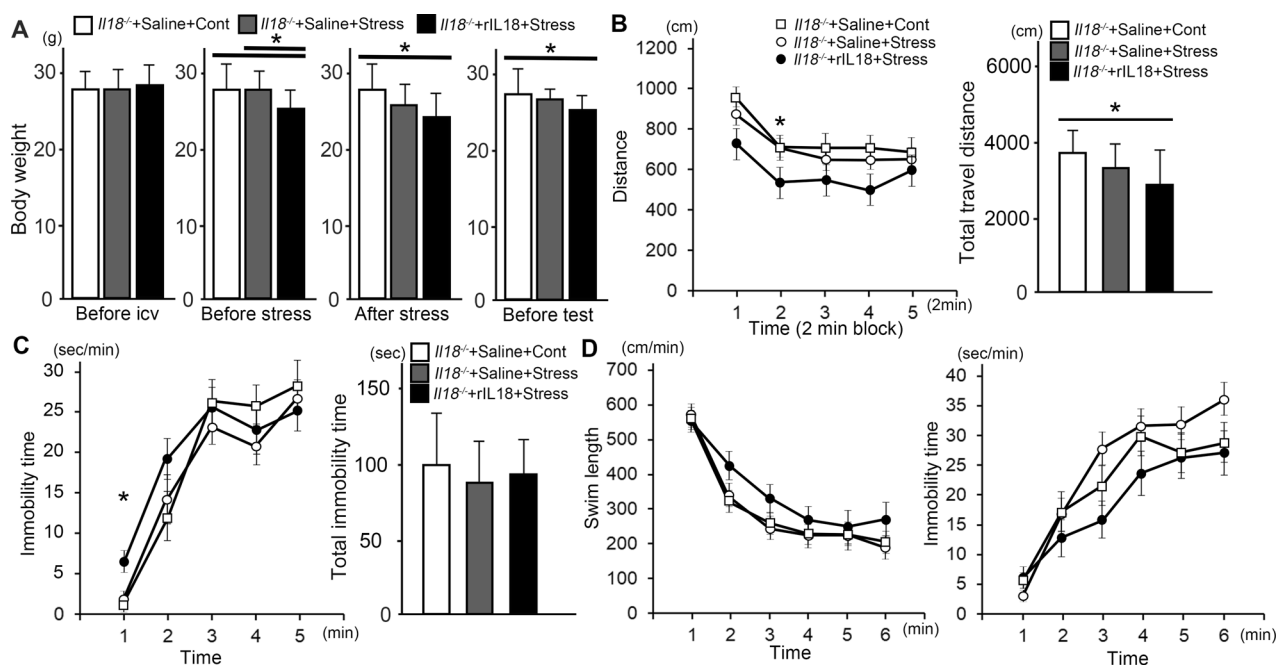


Fig. 5 Intracerebral injection of IL18 partially improved behavioral changes in stressed $IL18^{-/-}$ mice. **A** The body weights of each group before intracerebral injection of IL18, before stress treatment, after treatment, and before behavioral tests are shown. The behavioral tests results, including the open field test (**B**), tail suspension test (**C**), and forced swim test (**D**), are shown. **B** The graph shows the distance traveled by each mouse during 2 min (left) and the total distance (right) traveled in the open field test. **C** In the tail suspension test, a significant difference was found only during the first min. **D** In the forced swim test, no significant difference was observed. * $p < 0.05$ (stressed $IL18^{-/-}$ mice with IL18 administration versus the other groups), ($n = 12$ per group).

However, TTR/Ttr was decreased in $IL18^{-/-}$ mice compared with that in $IL18^{+/+}$ mice. According to our previous study, differences in *Ttr* are commonly detected in the liver, brown adipose tissue, hippocampus, and prefrontal cortex [16–19]. Although mRNA expression of *Ttr* was not significantly altered, its protein expression in the hippocampus was significantly decreased in both stressed $IL18^{+/+}$ and $IL18^{-/-}$ mice compared with that in non-stressed mice. In a clinical study, TTR was decreased in the cerebrospinal fluid of depressed patients compared with that in healthy controls [53]. Moreover, previous reports have suggested that TTR is a major factor in resistance to stress exposure [53, 54]. Although the serum TTR level was not different in $IL18^{+/+}$ and $IL18^{-/-}$ mice, the TTR level in the hippocampus of $IL18^{-/-}$ mice was decreased, and this was not affected by acute stress. Therefore, these results suggested that TTR might play an important role in mediating the stress response in IL18-deficient mice.

Intracerebral administration of IL18 was performed to determine whether behavioral changes in stressed $IL18^{-/-}$ mice could be reversed. Contrary to our prediction, no difference was observed between stressed $IL18^{-/-}$ mice administered saline or IL18 (Fig. 5). However, the increased travel distance observed in stressed $IL18^{-/-}$ mice was decreased by IL18 administration (Fig. 5B). No significant effect was observed in the TST and FST, although a slight recovery of behavioral effects was observed (Fig. 5C, D). Intracerebral injection, including saline, increased corticosterone levels in mice, and intracerebral injection itself acted as a source of stress in mice [55]. Therefore, our results suggested that intracerebral administration might be equivalent to a single restraint stress treatment and could produce the behavioral results shown in Fig. 5B, C. However, IL18 injection had a partial protective effect against stress as shown in Fig. 5A.

In summary, we found that stressed $IL18^{-/-}$ mice exhibited hyperactivity in behavioral assessments, prolonged stress-induced neural inflammation, increased levels of serum corticosterone and glucocorticoid receptor phosphorylation in the hippocampus, expressions of specific genes including *HSF5* and *TTR*, and the

amelioration of acute stress-induced behavioral changes after the intracerebral administration of IL18. These results suggest that IL18 may modulate the stress response and maintain a balance between neural inflammation and glucocorticoid signaling.

Regarding the limitations of our study, only a single stress was performed. Continuous stress treatment is warranted in future studies to develop other models of psychiatric disorders and major depressive disorders. Moreover, all analyses were performed one night after the stress was administered. A study of the time course of behavioral and neuro-inflammatory changes is warranted. IL18 has pleiotropic functions. IL18 was increased and peripheral IL18 was negatively correlated with brain activity in depressed patients [9, 56]. Moreover, the administration of IL18 into the amygdala, but not the hippocampus, led to severe depression-like behaviors [57]. However, a previous study indicated that $IL18^{-/-}$ mice exhibited morphological changes resulting in impaired learning and memory, and depressive-like behavioral changes [18]. Further analyses of the role of IL18 in different brain regions such as the amygdala and striatum and brain cells including neural cells and astrocytes are warranted.

CONCLUSION

We investigated the role of IL18 in stress. First, we revealed that IL18 deficiency resulted in behavioral changes such as stress-induced hyperactivity. Then, we found that stress-mediated neural inflammation was maintained in $IL18^{-/-}$ mice through the augmentation of glucocorticoid signaling, resulting in a slight attenuation of neurogenesis. In addition, *HSF5* and *TTR* might be the genes responsible for specific stress responses in IL18-deficient mice. Finally, we demonstrated a partial recovery effect produced by intracerebral IL18 administration. IL18 might be an indispensable cytokine that modulates and maintains homeostasis in the brain during stress. Moreover, our study suggests that IL18 may be a therapeutic target for psychiatric disorders, including stress-related disorders, although further clarification of its potential regulatory mechanism is required.

DATA AVAILABILITY

The datasets shown and/or analyzed in the present study are available from the corresponding author upon reasonable request.

REFERENCES

- Brown LH, Strauman T, Barrantes-Vidal N, Silvia PJ, Kwapil TR. An experience-sampling study of depressive symptoms and their social context. *J Nerv Ment Dis.* 2011;199:403–9.
- Slavich GM, Irwin MR. From stress to inflammation and major depressive disorder: a social signal transduction theory of depression. *Psychol Bull.* 2014;140:774–815.
- Berkenbosch F, van Oers J, del Rey A, Tilders F, Besedovsky H. Corticotropin-releasing factor-producing neurons in the rat activated by interleukin-1. *Science.* 1987;238:524–6.
- Besedovsky H, del Rey A, Sorkin E, Dinarello CA. Immunoregulatory feedback between interleukin-1 and glucocorticoid hormones. *Science.* 1986;233:652–4.
- Sapolsky R, Rivier C, Yamamoto G, Plotsky P, Vale W. Interleukin-1 stimulates the secretion of hypothalamic corticotropin-releasing factor. *Science.* 1987;238:522–4.
- Young EA, Korszun A. The hypothalamic-pituitary-gonadal axis in mood disorders. *Endocrinol Metab Clin North Am.* 2002;31:63–78.
- Paizanis E, Hamon M, Lanfumey L. Hippocampal neurogenesis, depressive disorders, and antidepressant therapy. *Neural plasticity.* 2007;2007:73754.
- Dowlati Y, Herrmann N, Swardfager W, Liu H, Sham L, Reim EK, et al. A meta-analysis of cytokines in major depression. *Biol Psychiatry.* 2010;67:446–57.
- Al-Hakeim HK, Al-Rammahi DA, Al-Dujaili AH. IL-6, IL-18, sIL-2R, and TNF α proinflammatory markers in depression and schizophrenia patients who are free of overt inflammation. *J Affect Disord.* 2015;182:106–14.
- You Z, Luo C, Zhang W, Chen Y, He J, Zhao Q, et al. Pro- and anti-inflammatory cytokines expression in rat's brain and spleen exposed to chronic mild stress: involvement in depression. *Behavioural Brain Res.* 2011;225:135–41.
- Okamura H, Tsutsi H, Komatsu T, Yutsudo M, Hakura A, Tanimoto T, et al. Cloning of a new cytokine that induces IFN-gamma production by T cells. *Nature.* 1995;378:88–91.
- Ghayur T, Banerjee S, Hugunin M, Butler D, Herzog L, Carter A, et al. Caspase-1 processes IFN-gamma-inducing factor and regulates LPS-induced IFN-gamma production. *Nature.* 1997;386:19–23.
- Okamura H, Tsutsui H, Kashiwamura S, Yoshimoto T, Nakanishi K. Interleukin-18: a novel cytokine that augments both innate and acquired immunity. *Adv Immunol.* 1998;70:281–312.
- Sugawara S, Uehara A, Nochi T, Yamaguchi T, Ueda H, Sugiyama A, et al. Neutrophil proteinase 3-mediated induction of bioactive IL-18 secretion by human oral epithelial cells. *J Immunol.* 2001;167:6568–75.
- Tsutsui H, Kayagaki N, Kuida K, Nakano H, Hayashi N, Takeda K, et al. Caspase-1-independent, Fas/Fas ligand-mediated IL-18 secretion from macrophages causes acute liver injury in mice. *Immunity.* 1999;11:359–67.
- Yamanishi K, Maeda S, Kuwahara-Otani S, Watanabe Y, Yoshida M, Ikubo K, et al. Interleukin-18-deficient mice develop dyslipidemia resulting in nonalcoholic fatty liver disease and steatohepatitis. *Transl Res: J Lab Clin Med.* 2016;173:101–14. e107
- Yamanishi K, Maeda S, Kuwahara-Otani S, Hashimoto T, Ikubo K, Mukai K, et al. Deficiency in interleukin-18 promotes differentiation of brown adipose tissue resulting in fat accumulation despite dyslipidemia. *J Transl Med.* 2018;16:314.
- Yamanishi K, Doe N, Mukai K, Ikubo K, Hashimoto T, Uwa N, et al. Interleukin-18-deficient mice develop hippocampal abnormalities related to possible depressive-like behaviors. *Neuroscience.* 2019;408:147–60.
- Yamanishi K, Miyauchi M, Mukai K, Hashimoto T, Uwa N, Seino H, et al. Exploring molecular mechanisms involved in the development of the depression-like phenotype in interleukin-18-deficient mice. *BioMed Res Int.* 2021;2021:9975865.
- Takeda K, Tsutsui H, Yoshimoto T, Adachi O, Yoshida N, Kishimoto T, et al. Defective NK cell activity and Th1 response in IL-18-deficient mice. *Immunity.* 1998;8:383–90.
- Can A, Dao DT, Arad M, Terrillion CE, Piantadosi SC, Gould TD. The mouse forced swim test. *J Vis Exp.* 2012;e3638.
- Steru L, Chermat R, Thierry B, Simon P. The tail suspension test: a new method for screening antidepressants in mice. *Psychopharmacology.* 1985;85:367–70.
- Yamanishi K, Hashimoto T, Miyauchi M, Mukai K, Ikubo K, Uwa N, et al. Analysis of genes linked to depressive-like behaviors in interleukin-18-deficient mice: gene expression profiles in the brain. *Biomed Rep.* 2020;12:3–10.
- Yamanishi K, Mukai K, Hashimoto T, Ikubo K, Nakasho K, El-Darwish Y, et al. Physiological and molecular effects of interleukin-18 administration on the mouse kidney. *J Transl Med.* 2018;16:51.
- Yamanishi K, Doe N, Sumida M, Watanabe Y, Yoshida M, Yamamoto H, et al. Hepatocyte nuclear factor 4 alpha is a key factor related to depression and physiological homeostasis in the mouse brain. *PLoS one.* 2015;10:e0119021.
- Nakagomi T, Molnár Z, Nakano-Doi A, Taguchi A, Saino O, Kubo S, et al. Ischemia-induced neural stem/progenitor cells in the pia mater following cortical infarction. *Stem Cells Dev.* 2011;20:2037–51.
- Nakagomi T, Taguchi A, Fujimori Y, Saino O, Nakano-Doi A, Kubo S, et al. Isolation and characterization of neural stem/progenitor cells from post-stroke cerebral cortex in mice. *Eur J Neurosci.* 2009;29:1842–52.
- Zhou L, Tao X, Pang G, Mu M, Sun Q, Liu F, et al. Maternal nicotine exposure alters hippocampal microglia polarization and promotes anti-inflammatory signaling in juvenile offspring in mice. *Front Pharmacol.* 2021;12:661304.
- Anacker C, Cattaneo A, Musaelyan K, Zunszain PA, Horowitz M, Molteni R, et al. Role for the kinase SGK1 in stress, depression, and glucocorticoid effects on hippocampal neurogenesis. *Proc Natl Acad Sci USA.* 2013;110:8708–13.
- Begni V, Riva MA, Cattaneo A. Cellular and molecular mechanisms of the brain-derived neurotrophic factor in physiological and pathological conditions. *Clin Sci.* 2017;131:123–38.
- Bengoa-Vergniory N, Kypta RM. Canonical and noncanonical Wnt signaling in neural stem/progenitor cells. *Cell Mol life Sci.* 2015;72:4157–72.
- Lai Polo SH, Saravia-Butler AM, Boyko V, Dinh MT, Chen YC, Fogle H, et al. RNAseq analysis of rodent spaceflight experiments is confounded by sample collection techniques. *iScience.* 2020;23:101733.
- Du M, Giridhar KV, Tian Y, Tschannen MR, Zhu J, Huang CC, et al. Plasma exosomal miRNAs-based prognosis in metastatic kidney cancer. *Oncotarget.* 2017;8:63703–14.
- Yankelevitch-Yahav R, Franko M, Huly A, Doron R. The forced swim test as a model of depressive-like behavior. *J Vis Exp.* 2015;e52587.
- Cryan JF, Mombereau C, Vassout A. The tail suspension test as a model for assessing antidepressant activity: review of pharmacological and genetic studies in mice. *Neurosci Biobehav Rev.* 2005;29:571–625.
- Pechnick RN, Chesnokova VM, Kariagina A, Price S, Bresee CJ, Poland RE. Reduced immobility in the forced swim test in mice with a targeted deletion of the leukemia inhibitory factor (LIF) gene. *Neuropsychopharmacology.* 2004;29:770–6.
- Yamada K, Iida R, Miyamoto Y, Saito K, Sekikawa K, Seishima M, et al. Neurobehavioral alterations in mice with a targeted deletion of the tumor necrosis factor- α gene: implications for emotional behavior. *J Neuroimmunol.* 2000;111:131–8.
- Zhao X, Cao F, Liu Q, Li X, Xu G, Liu G, et al. Behavioral, inflammatory and neurochemical disturbances in LPS and UCMS-induced mouse models of depression. *Behavioural Brain Res.* 2019;364:494–502.
- Sathyanesan M, Haiar JM, Watt MJ, Newton SS. Restraint stress differentially regulates inflammation and glutamate receptor gene expression in the hippocampus of C57BL/6 and BALB/c mice. *Stress.* 2017;20:197–204.
- Bian Y, Pan Z, Hou Z, Huang C, Li W, Zhao B. Learning, memory, and glial cell changes following recovery from chronic unpredictable stress. *Brain Res Bull.* 2012;88:471–6.
- Yoo KY, Lee CH, Park JH, Hwang IK, Park OK, Kwon SH, et al. Antioxidant enzymes are differentially changed in experimental ischemic hippocampal CA1 region following repeated restraint stress. *J Neurol Sci.* 2011;302:33–42.
- Owashii T, Otsubo T, Oshima A, Nakagome K, Higuchi T, Kamijima K. Longitudinal neuroendocrine changes assessed by dexamethasone/CRH and growth hormone releasing hormone tests in psychotic depression. *Psychoneuroendocrinology.* 2008;33:152–61.
- Sawamoto A, Okuyama S, Yamamoto K, Amakura Y, Yoshimura M, Nakajima M, et al. 3,5,6,7,8,3',4'-Heptamethoxyflavone, a citrus flavonoid, ameliorates corticosterone-induced depression-like behavior and restores brain-derived neurotrophic factor expression, neurogenesis, and neuroplasticity in the hippocampus. *Molecules.* 2016;21:541.
- Wong ML, Kling MA, Munson PJ, Listwak S, Licinio J, Prolo P, et al. Pronounced and sustained central hypernoradrenergic function in major depression with melancholic features: relation to hypercortisolism and corticotropin-releasing hormone. *Proc Natl Acad Sci USA.* 2000;97:325–30.
- Lenze EJ, Mantella RC, Shi P, Goate AM, Nowotny P, Butters MA, et al. Elevated cortisol in older adults with generalized anxiety disorder is reduced by treatment: a placebo-controlled evaluation of escitalopram. *Am J Geriatr Psychiatry.* 2011;19:482–90.
- Kirby ED, Muroy SE, Sun WG, Covarrubias D, Leong MJ, Barchas LA, et al. Acute stress enhances adult rat hippocampal neurogenesis and activation of newborn neurons via secreted astrocytic FGF2. *eLife.* 2013;2:e00362.
- Diaz-Jimenez D, Kolb JP, Cidlowski JA. Glucocorticoids as regulators of macrophage-mediated tissue homeostasis. *Front Immunol.* 2021;12:669891.
- Aarum J, Sandberg K, Haeblerlein SL, Persson MA. Migration and differentiation of neural precursor cells can be directed by microglia. *Proc Natl Acad Sci USA.* 2003;100:15983–8.
- Feng X, Zhao Y, Yang T, Song M, Wang C, Yao Y, et al. Glucocorticoid-driven NLRP3 inflammasome activation in hippocampal microglia mediates chronic stress-induced depressive-like behaviors. *Front Mol Neurosci.* 2019;12:210.

50. Zhang K, Pan X, Wang F, Ma J, Su G, Dong Y, et al. Baicalin promotes hippocampal neurogenesis via SGK1- and FKBP5-mediated glucocorticoid receptor phosphorylation in a neuroendocrine mouse model of anxiety/depression. *Sci Rep.* 2016;6:30951.
51. Piatti VC, Espósito MS, Schinder AF. The timing of neuronal development in adult hippocampal neurogenesis. *Neuroscientist.* 2006;12:463–8.
52. Akerfelt M, Morimoto RI, Sistonen L. Heat shock factors: integrators of cell stress, development and lifespan. *Nat Rev Mol Cell Biol.* 2010;11:545–55.
53. Sullivan GM, Mann JJ, Oquendo MA, Lo ES, Cooper TB, Gorman JM. Low cerebrospinal fluid transthyretin levels in depression: correlations with suicidal ideation and low serotonin function. *Biol Psychiatry.* 2006;60:500–6.
54. Sousa JC, Grandela C, Fernández-Ruiz J, de Miguel R, de Sousa L, Magalhães AI, et al. Transthyretin is involved in depression-like behaviour and exploratory activity. *J Neurochem.* 2004;88:1052–8.
55. Kim DH, Jung JS, Song DK, Suh HW, Huh SO, Kim YH. Intracerebroventricular injection-induced increase in plasma corticosterone levels in the mouse: a stress model. *J Pharmacol Toxicol Methods.* 1998;39:71–73.
56. Du X, Zou S, Yue Y, Fang X, Wu Y, Wu S, et al. Peripheral Interleukin-18 is negatively correlated with abnormal brain activity in patients with depression: a resting-state fMRI study. *BMC Psychiatry.* 2022;22:531.
57. Wu D, Zhang G, Zhao C, Yang Y, Miao Z, Xu X. Interleukin-18 from neurons and microglia mediates depressive behaviors in mice with post-stroke depression. *Brain, Behav, Immun.* 2020;88:411–20.

ACKNOWLEDGEMENTS

We thank Mr. Nobutaka Okamura and Mrs. Mina Nishimura for their technical support, Mr. Nobutaka Okamura for his support with sample collection, and Mrs. Mina Nishimura for clerical assistance. We thank the staff of the Research Facilities for Common Use of Hyogo Medical University for allowing resources to be used for the present study. We thank the funders listed above for supporting our study. We thank Lisa Kreiner, PhD, from Edanz (<https://jp.edanz.com/ac>) for editing a draft of this manuscript.

AUTHOR CONTRIBUTIONS

KY, HY, and HM designed the study and wrote the manuscript. KM, TH, NG, and MH performed the experiments. ND, YW, HO, and CY analyzed the data.

FUNDING

This study was supported by JSPS KAKENHI Grant Number 20K16680, a grant from SENSHIN Medical Research Foundation (2019, 2021), a grant from the Takeda Science Foundation (2019), Hyogo Medical University Grant for Research Promotion, 2020 and 2022, YOKOYAMA Foundation for Clinical Pharmacology Grant Number YRY-2004, and a grant from the Uehara Memorial Foundation (2021). The funders had no

role in the study design, data collection and analysis, decision to publish, or preparation of the manuscript.

COMPETING INTERESTS

The authors declare no competing interests.

ETHICAL APPROVAL

The animal experiments were conducted according to the Guide for the Care and Use of Laboratory Animals published by the National Institutes of Health and were approved by the Animal Care Committee of Hyogo Medical University (Hyogo, Japan) (approval no. A09-206, #28041, and #19-030). All efforts were made to minimize the number of mice used and the suffering of animals.

ADDITIONAL INFORMATION

Supplementary information The online version contains supplementary material available at <https://doi.org/10.1038/s41398-022-02175-7>.

Correspondence and requests for materials should be addressed to Hisato Matsunaga.

Reprints and permission information is available at <http://www.nature.com/reprints>

Publisher's note Springer Nature remains neutral with regard to jurisdictional claims in published maps and institutional affiliations.



Open Access This article is licensed under a Creative Commons Attribution 4.0 International License, which permits use, sharing, adaptation, distribution and reproduction in any medium or format, as long as you give appropriate credit to the original author(s) and the source, provide a link to the Creative Commons license, and indicate if changes were made. The images or other third party material in this article are included in the article's Creative Commons license, unless indicated otherwise in a credit line to the material. If material is not included in the article's Creative Commons license and your intended use is not permitted by statutory regulation or exceeds the permitted use, you will need to obtain permission directly from the copyright holder. To view a copy of this license, visit <http://creativecommons.org/licenses/by/4.0/>.

© The Author(s) 2022