

OPEN

Marine heat wave and multiple stressors tip bull kelp forest to sea urchin barrens

L. Rogers-Bennett* & C. A. Catton

Extreme climatic events have recently impacted marine ecosystems around the world, including foundation species such as corals and kelps. Here, we describe the rapid climate-driven catastrophic shift in 2014 from a previously robust kelp forest to unproductive large scale urchin barrens in northern California. Bull kelp canopy was reduced by >90% along more than 350 km of coastline. Twenty years of kelp ecosystem surveys reveal the timing and magnitude of events, including mass mortalities of sea stars (2013-), intense ocean warming (2014–2017), and sea urchin barrens (2015-). Multiple stressors led to the unprecedented and long-lasting decline of the kelp forest. Kelp deforestation triggered mass (80%) abalone mortality (2017) resulting in the closure in 2018 of the recreational abalone fishery worth an estimated \$44 M and the collapse of the north coast commercial red sea urchin fishery (2015-) worth \$3 M. Key questions remain such as the relative roles of ocean warming and sea star disease in the massive purple sea urchin population increase. Science and policy will need to partner to better understand drivers, build climate-resilient fisheries and kelp forest recovery strategies in order to restore essential kelp forest ecosystem services.

Rapid environmental changes are threatening critical marine ecosystems around the world¹, leading to large-scale catastrophic ecosystem shifts and loss of ecosystem services². Severe declines in key habitat-forming species, or ecosystem engineers, such as corals^{3,4}, seagrass⁵ and kelps⁶ will be particularly devastating to biodiversity and productivity. Kelp species are the primary structuring component of highly-productive temperate nearshore rocky reefs^{7,8} growing up to 60 cm per day, but are vulnerable to climate change stressors^{9,10} and may be at risk worldwide^{11,12}. Historically, kelp forests have occupied 25% of the world's coastlines¹³, providing a wide range of ecosystem services, including both habitat structure and food resources^{14,15} as well as modifying light levels and sedimentation¹⁶, water flow¹⁷, nutrient dynamics¹⁸, carbon sequestration¹⁹ and physical disturbance²⁰. Dense kelp beds are biodiversity hot spots, with many kelp-forest obligate species²¹ as well as species utilizing kelp forests as critical nursery habitats²², including many economically-important fished species. Kelp forests are resilient to short-term warming events²³, but multiple severe ecological and climatic stressors could tip kelp ecosystems into an urchin-dominated ecosystem. Sea urchin barrens have multiple feedback loops which could maintain barrens as an alternative stable state^{2,24,25}. The dynamics of productive, species-rich, macroalgal-dominated kelp forests are nonlinear and can rapidly transform into unproductive, species-poor urchin-dominated barrens known as a state or phase shift^{26–28}.

Starting in 2013, the Northeast Pacific Ocean experienced a record-breaking Marine Heat Wave (MHW) that resulted in well-documented declines of many offshore marine populations and ecosystems, from Baja California to Alaska. Nutrient-poor, warm water conditions associated with the MHW (2013–2015)^{29,30} originated in the Bering Sea, Alaska in 2013 and expanded to the California coast in 2014. Sea surface temperatures 2.5 °C warmer than normal persisted for 226 days, making this MHW the longest duration ever recorded³¹. The MHW led to an unprecedented coast-wide harmful algal bloom which increased concentrations of the neurotoxin domoic acid, resulting in marine mammal strandings and prolonged fishery closures³². Further, unusual mass mortality and starvation events were observed in offshore birds and mammals (e.g. Tufted puffin³³). Overlapping with the MHW, the “Godzilla” El Niño (2015–2016) shifted geographic distributions of warm-water species poleward^{34,35}, with unknown impacts to long-term ecosystem community structure and productivity.

Coastal Marine Science Institute, Karen C. Drayer Wildlife Health Center, University of California, Davis, and California Department of Fish and Wildlife, Bodega Marine Laboratory 2099 Westside Rd., Bodega Bay, CA, 94923-0247, USA. *email: rogersbennett@ucdavis.edu

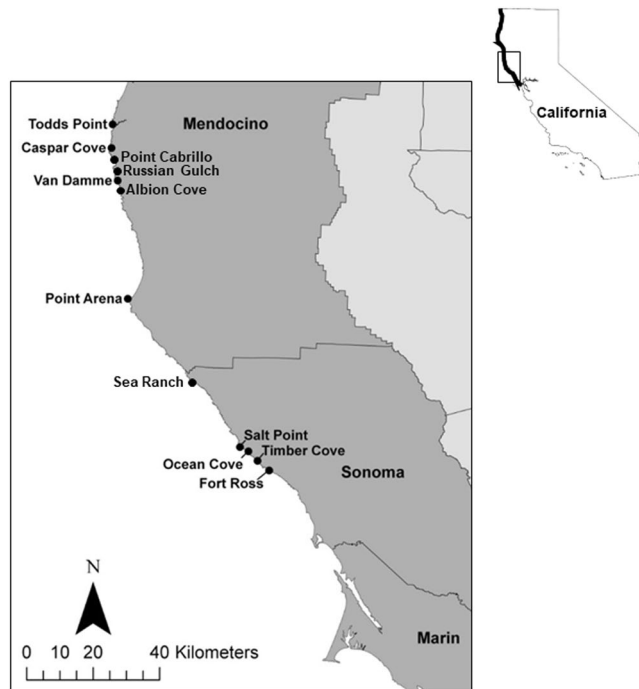


Figure 1. Map of study region in northern California. Extent of aerial survey of kelp canopy represented by the thick black coastline (*inset map*). Subtidal survey sites in Sonoma and Mendocino counties (*main map*). Maps were made using ArcGIS Version 10.6 software by Esri (<http://desktop.arcgis.com>).

Temperate kelp forests in northern California (Fig. 1) were particularly vulnerable to the MHW and other concurrent ecological stressors. This region, which was historically very productive, supported robust fisheries including the recreational red abalone, *Haliotis rufescens*, fishery (valued at \$44 M yr⁻¹³⁶) as well as the commercial red sea urchin, *Mesocentrotus franciscanus*, fishery (valued at \$3 M yr⁻¹). The bull kelp forests in this region (>350 km) were the first along the west coast of North America to show severe impacts to kelp productivity. The long-term kelp forest monitoring program was critical for tracking and understanding the biological responses to these multiple climate-related stressors and resulting degradation of fisheries and other ecosystem services³⁷. Similar impacts seem to be developing in kelp forests from Baja California to Alaska (*personal communications*), so that the dynamics described from this northern California case study will be critical for tracking and understanding the biological responses to these multiple climate-related stressors and resulting degradation of fisheries and other ecosystem services³⁷.

Here, we document the catastrophic declines in northern California kelp forests during the MHW, and the subsequent rapid shift of historically persistent kelp ecosystems to wide-spread urchin barrens. We describe the timing and magnitude of events affecting this critical nearshore region based on long-term monitoring data of kelp canopy area (1999–2016), subtidal temperature (2006–2018), and extensive scuba-based ecosystem surveys (1999–2018). We discuss the vulnerability of ecosystem services affecting economic outcomes for the region (e.g. fisheries collapse, loss of tourism), and explore opportunities to enhance resilience³⁸ against climate changes which are predicted to increase in the future.

Results

The region north of San Francisco to the Oregon border (Fig. 1) historically supported extensive, nearly pristine, productive, and persistent bull kelp, *Nereocystis luetkeana*, forests³⁹. Human population densities and development are low in the region, so no abrupt anthropogenic impacts to ocean conditions and ecosystem health were anticipated. A series of perturbations⁴⁰ including a loss of sea star predators of urchins⁴¹, prolonged warm-water conditions, and a population explosion of purple sea urchins occurred prior to and concurrently with an abrupt shift from bull kelp forest to persistent urchin barrens (Fig. 2).

Bull kelp. Bull kelp canopy area declined dramatically in 2014 (Fig. 3) throughout the historically-persistent region of bull kelp forest (>350 km of coastline) in northern California. Maximum historic extent of kelp canopy (available data: 1999, 2002, 2003, 2004 and 2008) in the region exceeded 50 km², with a range of 2.4 to 14.9 km² observed in any given year. Nearly 95% of the historic kelp canopy area was observed in Sonoma and Mendocino counties, a 250 km region of coastline dominated by contiguous rocky reef habitat. Bull kelp forests continued to be productive in 2009–2013, growing extensive thick beds throughout Sonoma and Mendocino counties (Fig. 2a; *personal observation*). In 2014–2016, the kelp canopy area declined to <2 km², with no appreciable recovery observed in the core region of the kelp forest in 2017–2019 (*personal observation*).

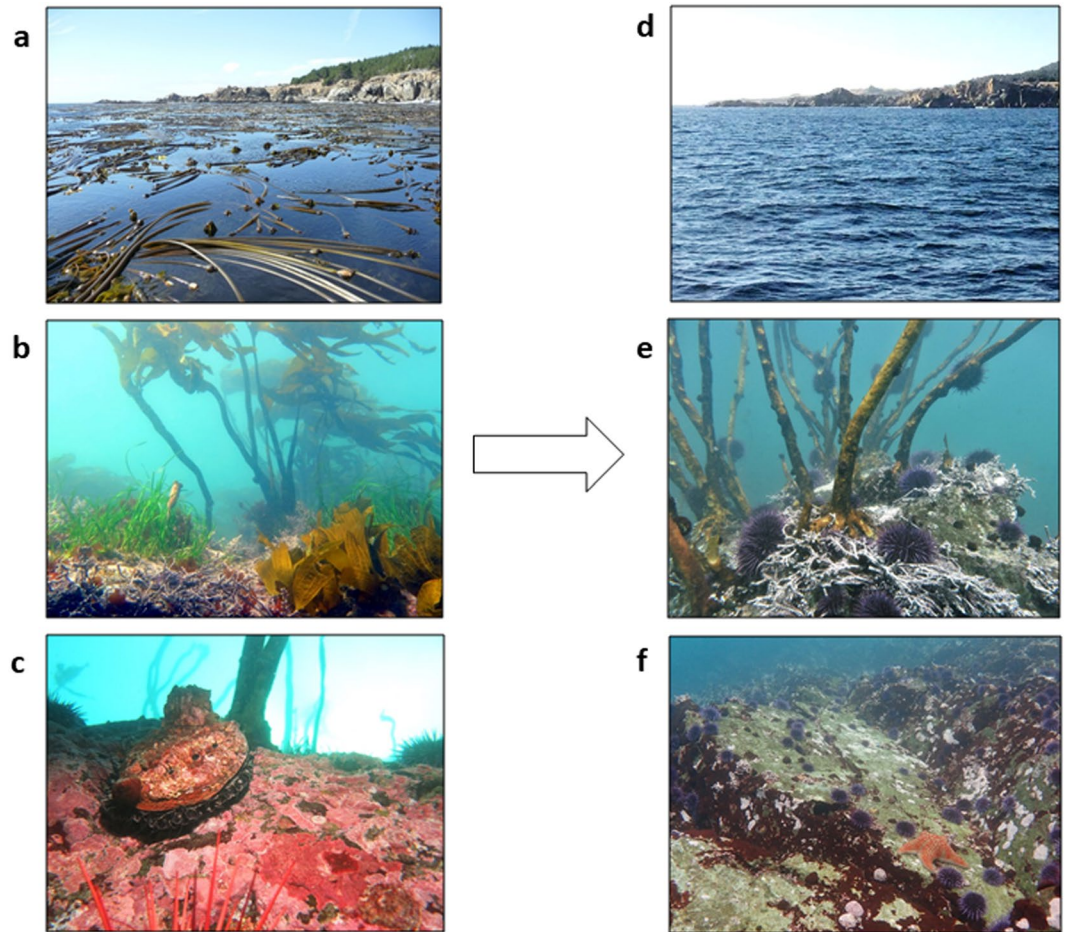


Figure 2. Ecosystem shifts observed for kelp forest canopy (*top*), subcanopy (*middle*), and benthose (*bottom*), pre-impact (**a–c**) and post-impact (**d–f**). Photo credit: CDFW (K. Joe (**a,c,e**); L. Rogers-Bennett (**b**); C. Catton (**d,f**)).

Water temperature. The bull kelp decline in 2014 coincided with the onset of the persistent warm water conditions associated with the MHW³⁰ in northern California (Fig. 4a Temperature Time Series). Nutrient-poor conditions associated with warmer ocean temperatures ($>12^{\circ}\text{C}$)^{42,43} typically appear in fall (September/October), after the primary growing season for bull kelp (June - August). In the summer of 2014 through winter of 2015, daily maximum subtidal nearshore temperatures exceeded 12°C the majority of days, starting in August (74%) until February 2015 (93%), reaching a record breaking peak temperature of 17.4°C on September 24, 2014. Cooler temperatures prevailed during the spring upwelling season of 2015, until temperatures exceeding 12°C again when warm days dominated cool days from July 2015 (65%) to March 2016 (77%). Warmer conditions developed early again in August 2017 and 2018, but were more variable, and on average cooler, than the 2014–2016 time period.

Sea stars. Prior to the MHW impacts to the kelp forest in northern California, a mass mortality event of twenty seastar species, Sea Star Wasting Syndrome (SSWS)^{41,44,45} decimated local seastar populations from San Mateo to Mendocino counties, beginning in the summer of 2013. Particularly impacted were populations of the Sunflower star, *Pycnopodia helianthoides*, an important urchin predator in kelp forest ecosystems. Prior to 2013, Sunflower stars were commonly observed on transect surveys (average population densities $0.01\text{--}0.12$ stars m^{-2}) (Fig. 4b). Within one year of detecting SSWS in the populations, Sunflower stars were functionally extinct (only 1 observed in 2014 and 2015). No Sunflower stars have been observed at any sites 2016–2019, strongly suggesting that this species is now locally extinct.

Sea urchin. Purple sea urchin, *Strongylocentrotus purpuratus*, were historically very low density in the subtidal ($0.0\text{--}1.7$ urchins m^{-2}) prior to 2014, primarily distributed in small dense patches in the shallows. Populations of purple urchins began to moderately increase in the fall of 2014, dramatically increasing 60 fold in 2015 (range: $8.2\text{--}12.9$ urchins m^{-2}) (Fig. 4c). Starting in 2015, the purple sea urchins shifted to a more aggressive feeding behavior associated with food limited urchin barren conditions, grazing down stipes of subcanopy kelps and fleshy algae (Fig. 2e), then grazing through the calcified crustose coralline algal cover (Fig. 2f). Since 2015, purple urchin densities have continued to increase at most of the sites (2018 range: $9.2\text{--}24.1$ urchins m^{-2}).

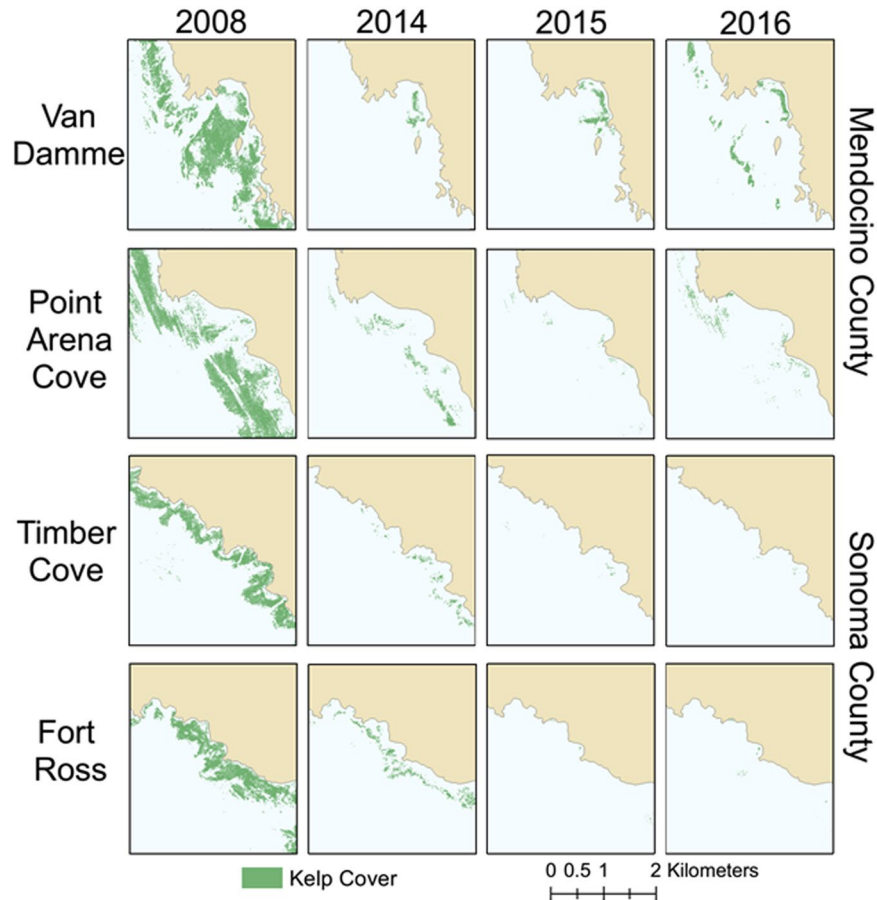


Figure 3. Surface kelp canopy area pre- and post-impact from sites in Sonoma and Mendocino counties, northern California from aerial surveys (2008, 2014–2016). Maps were made using ArcGIS Version 10.6 software by Esri (<http://desktop.arcgis.com>).

Abalone. Red abalone populations were historically abundant (range: 0.24–1.01 abalone m^{-2}) and productive prior to the severe ecosystem shifts in 2014 supporting an economically and culturally important fishery. While food-limited conditions progressively worsened after 2014, red abalone populations started to succumb to prolonged starvation, and a mass mortality event initiated in 2017 (Fig. 4d). Piles of shells were observed in the subtidal and severely weakened and shrunken abalone were common. Strong winter storms washed abalone ashore in large numbers, adding to the mass mortality. Population densities decreased at monitoring sites by 48–82% between 2016 and 2017, with additional 43–96% declines observed between 2017 and 2018 (2018 range: 0.01–0.21 abalone m^{-2}).

Discussion

A combination of large-scale environmental and ecological stressors led to dramatically reduced bull kelp canopy in northern California, starting in 2014. Climate-driven impacts of warm-water, including thermal stress and nutrient limitation, associated with the MHW suppressed bull kelp growth (and spore production) during the summer of 2014. These climate-driven impacts persisted for multiple years, and were exacerbated by a strong ecological impact of moderate sea urchin herbivory starting in 2014 and becoming intense in 2015–present. From field observations during subtidal monitoring work, we know that kelp was abundant prior to the impacts in 2014. The continued low bull kelp abundance after 2014 is likely due to the combination of unfavorable environmental conditions (warm water and low nutrients), intensive urchin grazing pressure, and limited spore availability due to multiple years of low production of this annual species.

Starting in 2014, sea urchin populations began to increase to higher densities than previously observed in the region. Populations increased at many sites to more than 30 times historic numbers by 2015, and have continued to increase. Despite widespread starvation conditions, spawning adults of purple urchins have been observed even at sites devoid of macroalgae, and young of the year (<20 mm) are abundant throughout the region. It is unknown if there was a primary driver of the urchin population increase, or if both top-down (sea star predation) and bottom-up recruitment of purple sea urchin processes were responsible. Similarly, the driver(s) of SSWS which led to the local extinction of the Sunflower star is unknown. The first observations of SSWS in the region were recorded during cold-water conditions in the summer of 2013, suggesting that this mass mortality was not initially driven by changes in ocean climate, however warm-water conditions may have later exacerbated the mortalities⁴⁴.

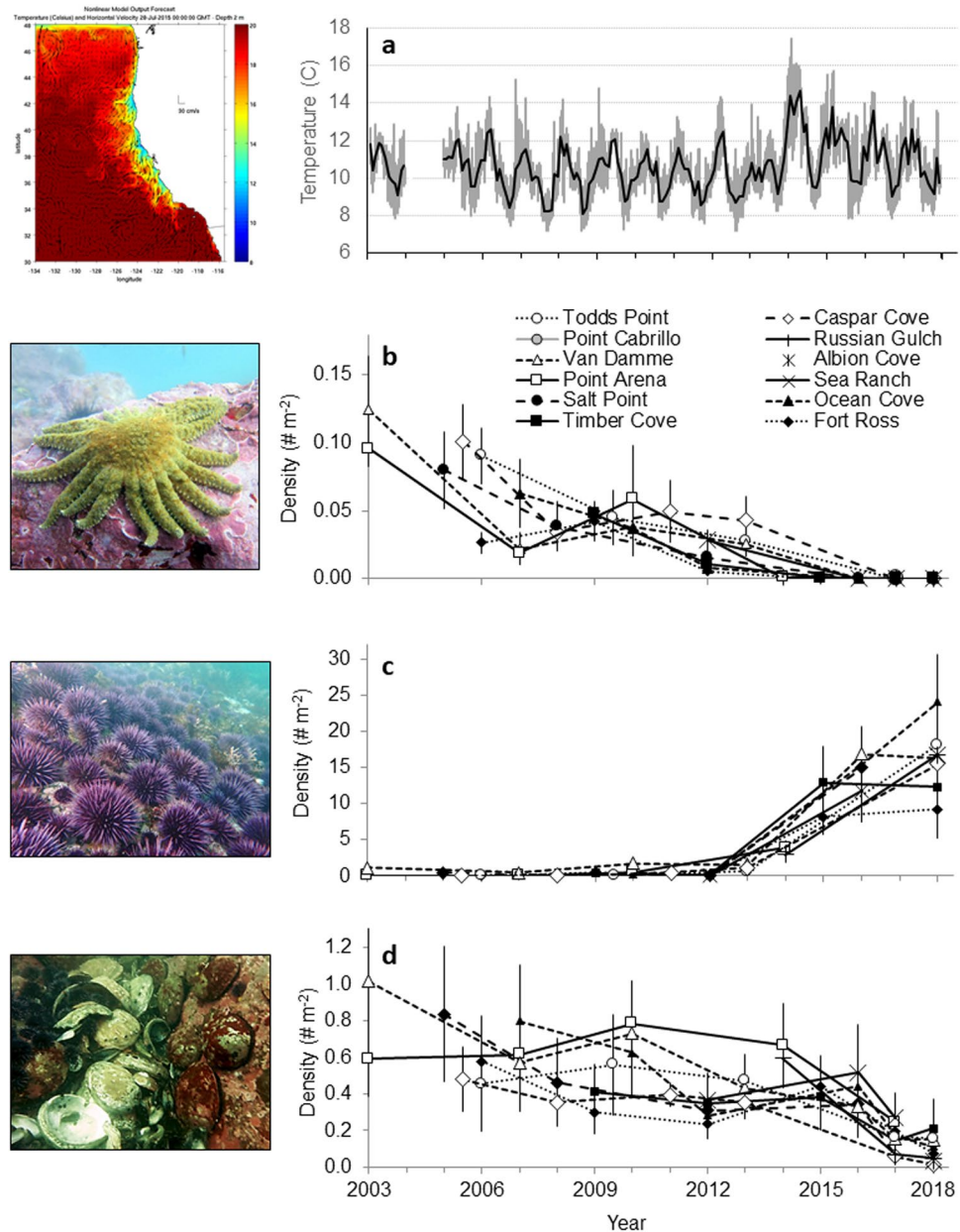


Figure 4. Time series of ecosystem stressors and species abundances (2003–2018). (a) Benthic (10 m depth) temperature in Mendocino County; (b–d): Average population densities observed across four equal depth strata (0–20 m depth) of Sunflower Stars (b), Purple Urchin (c), and Red Abalone (d). Error bars are s.e.m. across the four depth strata. Image credit: UCSC Ocean Sciences (a); CDFW (A. Maguire (b), K. Sowul (c), K. Joe (d)).

The large-scale ecosystem stressors leading to urchin barrens in northern California illustrates the vulnerability of our ecosystems and communities to climate-driven collapses. Many kelp forest ecosystem services have collapsed on a large scale throughout the region, with particularly severe economic impacts due to collapsed fisheries, kelp harvest, tourism opportunities, and loss of cultural resources. The northern California recreational red abalone fishery was the largest in the world, with 35,000 fishers landing 245,000 abalone (292 mt) yr⁻¹³⁶, however the California and Oregon fisheries were closed in 2018 due to abalone mass mortalities. Widespread abalone starvation and mortality was observed in the wild (Fig. 4d). From previous laboratory experiments, we showed that starvation conditions alone will impact red abalone health and reproduction, which will be exacerbated with warm water⁴⁶. Similarly, the commercial red sea urchin fishery has collapsed due to starvation conditions leading to poor gonad production and unmarketable sea urchins. Small remnant kelp patches (<5%) observed since 2014 are not as capable of promoting kelp recruitment as intact kelp forests⁴⁷. Further, this ecosystem shift to urchin barrens may persist as sea urchins can thrive in low food conditions on dissolved organics as both larvae⁴⁸ and adults⁴⁹ suggesting urchins barrens could be an alternative stable state.

Even if kelps recover from these multiple stressors, it may take decades before the complex biological communities, associates, and the ecosystem services provided by macroalgal forests (Table 1) rebound as has been

Ecosystem Services	Goods and Services	References
Biodiversity	Enhanced Resilience	11
	Feeding Habitat	61
	Community Structure	62
	Enhanced Microorganisms	63
Fisheries and Aquaculture	Finfish, Shellfish, Algae	61,64
Recreational Non-Consumptive Activities	Scuba Diving, Kayaking, Photography	65
	Economic Source	66
Provisioning	Kelp	67
	Drift Kelp Subsidies	68,69
	Dissolved Organics	70
Coastal Protection	Storm Buffer	17
Carbon Sequestration	Oxygen Production	19
	Water Quality	71
	Fossil Fuel Source	72

Table 1. Ecosystem services provided by kelp forests to nearshore subtidal marine communities.

observed in other parts of the world^{50–52}. While the red sea urchin fishery may take only a few months to rebound after kelp recovery, red abalone populations have declined so low that population recovery will likely take decades after kelp populations recover. A host of economically important non-consumptive recreational opportunities, including scuba diving, kayaking, and nature photography, may also impact tourism as the broader nearshore kelp associated community slowly recovers (Table 1).

The documented severe loss of kelp in northern California, starting in 2014, is remarkable because of the scale (>300 km), magnitude (>90%), and speed (within one year) of the impact in an area of historically persistent kelp forests. The severity of on-going ecological and economic consequences underscores the need to investigate the climate impacts and interactions of multiple stressors influencing the vulnerability of ecosystems, even in regions that are relatively pristine (minimal anthropogenic impacts). Identifying the relative impact of individual stressors on a natural system is frequently not possible with observational data alone, particularly when multiple stressors co-occurred or occurred in a rapid sequence. Here, we draw on the long time series of monitoring work and experience with the system, ecological knowledge and theory for kelp forest ecosystems to elucidate the timing of the strongest known stressors in the system.

Given the loss of ecosystem services associated with the shift to an unproductive alternative state, it is important to understand the perturbations that disrupted the marine ecosystem⁵³ and its ability to rebound from perturbations (resilience to phase shifts)^{4,54}. Identifying the relative importance of factors influencing climate vulnerability is the focus of ongoing research and will be critical for informing recovery potential. A plan for bull kelp recovery in northern California, developed in 2018–2019 with broad scientist and stakeholder input, identifies actionable recovery strategies aimed at enhancing ecological understanding of the drivers that will inform climate ready restoration actions and build resilience for the future⁵⁵.

Science-based management action plans must be initiated to bolster resilience in vulnerable and impacted ecosystems⁵¹ as all indications are the urchin barrens will persist. In the future, MHW are predicted to continue⁵⁶ increasing in frequency and intensity globally³¹ with the NE Pacific a regional hot-spot³⁴. This threat provides strong motivation for developing climate-ready action plans to increase ecosystem resilience to major climate stressors and identify recovery bright spots^{57,58}. Such plans should focus on tracking resilience such as within favorable microclimates⁵⁹, enhancing recovery of ecosystem engineers and keystone species, as well as identifying opportunities for economic incentives to support climate resiliency. For kelp forests in California, solutions may include developing economic opportunities to reduce urchin grazing pressure by supporting emerging purple sea urchin restorative fisheries and shifting away from fisheries being the sole support for ecosystem monitoring. Climate-ready resource management will require garnering support and building broad partnerships between science, industry and nonprofits, to develop new monitoring and restoration approaches that enhance resilience of foundational species and their ecosystem services into the future.

Methods

Northern California region. We present monitoring data from the nearshore kelp forest ecosystem at sites in rocky subtidal habitats in northern California (San Francisco to the Oregon border), with particular focus on Sonoma and Mendocino counties, from 2003–2018 (Fig. 1). Kelp communities in this region are on rocky reefs dominated by bull kelp, *Nereocystis luetkeana* (Fig. 2a). The understory is comprised of short fleshy red and crustose coralline algae as well as subcanopy kelps, such as *Pterygophora* and *Laminaria* (Fig. 2b). These subtidal rocky reefs in northern California support a diverse assemblage of macroalgae and marine invertebrates.

Kelp canopy cover. Total kelp surface canopy area was assessed in 2008, 2014–2016 by aerial surveys from San Francisco to the Oregon border. Kelp canopy was quantified using low-flying aircraft to photographically survey the nearshore coastline. Cameras were mounted on the aircraft to capture the images. Image frames were auto-georeferenced using customized software, and manually shifted as needed. ERDAS IMAGINE software was used to mosaic the frames and run them through classification in ERDAS IMAGINE. Maximum extent of the

kelp forest was determined by overlaying shapefiles from all available survey years which include 1999, 2002–2005, and 2008. Using ArcGIS Version 10.6 software by Esri, the total area representing kelp on the composite shape file was quantified in km². This procedure shows the potential for kelp canopy cover throughout the area as compared with the extent of canopy cover in a given year. No comparable large-scale kelp aerial survey data exist for this region from 2009–2013.

Subtidal temperature. Underwater temperature loggers were placed by scuba divers at Van Damme State Park at 10 m depth inside the kelp forest to monitor subsurface sea water temperatures from August 2003–August 2018. Tidbit temperature loggers made by Onset HOBO recorded temperature once per hour and were retrieved once a year by divers in August. Note: There is a gap in August 2004 to October 2005 due to failure of the logger. These data are used to detect the magnitude of the temperature and the frequency and duration of exceedance above 12 °C, an important metric for bull kelp growth as NO₃ concentrations are low at this temperature and warmer⁴².

Subtidal scuba surveys. The nearshore kelp forest ecosystem monitoring program⁶⁰ conducts scuba surveys at sites in rocky subtidal habitats along Sonoma and Mendocino counties in northern California. These surveys of the nearshore rocky reefs were initiated in 1999 and allowed for photographic documentation of communities before and after multiple stressors impacted the region. Subtidal surveys were conducted by the California Department of Fish and Wildlife (CDFW) by motor boat at twelve sites along the Sonoma and Mendocino county coasts. The sites ranged in coastal length from 2.4 to 3.2 km. The sites in Sonoma County from south to north include: Fort Ross, Timber Cove, Ocean Cove, Salt Point, and Sea Ranch. In Mendocino County the sites from south to north include: Point Arena, Albion, Van Damme, Russian Gulch, Point Cabrillo (State Marine Reserve), Caspar Cove and Todd's Point (Fig. 1). The surveys are conducted along band transects 30 × 2 m, located randomly within four depth strata (random stratified) from 1 to 20 m depths. The density estimation for each species is determined by averaging the densities within each of the four depth strata and then calculating the average of the four densities from each depth. The error bars represent standard error of the mean densities across four depth strata. The sites are surveyed to enumerate abalone, sea urchins, sea stars, macro-invertebrate densities as well as percent cover of algae and substrate type. All size classes observed are recorded. At each site 15–55 transects were surveyed. Transects were located in areas with >50% rocky reef.

Permissions for protected areas. Underwater surveys were conducted inside two marine protected areas. Van Damme State Park (State Marine Conservation Area) and Point Cabrillo (State Marine Reserve) with the permission of the California Department of Fish and Wildlife who is the managing authority for Marine Protected Areas in California.

Data availability

The data that support the findings of this study are available from the corresponding author upon request.

Received: 11 July 2019; Accepted: 23 September 2019;

Published online: 21 October 2019

References

1. Hoegh-Guldberg, O. & Bruno, J. F. The Impact of Climate Change on the World's Marine Ecosystems. *Science* **328**, 1523–1528, <https://doi.org/10.1126/science.1189930> (2010).
2. Scheffer, M., Carpenter, S., Foley, J. A., Folke, C. & Walker, B. Catastrophic shifts in ecosystems. *Nature* **413**, 591 (2001).
3. Hughes, T. P. Catastrophes, Phase Shifts, and Large-Scale Degradation of a Caribbean Coral Reef. *Science* **265**, 1547–1551, <https://doi.org/10.1126/science.265.5178.1547> (1994).
4. Hughes, T. P., Linares, C., Dakos, V., van de Leemput, I. A. & van Nes, E. H. Living dangerously on borrowed time during slow, unrecognized regime shifts. *Trends Ecol Evol* **28**, 149–155, <https://doi.org/10.1016/j.tree.2012.08.022> (2013).
5. Waycott, M. *et al.* Accelerating loss of seagrasses across the globe threatens coastal ecosystems. *Proceedings of the national academy of sciences* **106**, 12377–12381 (2009).
6. Foster, S. & Schiel, R. The ecology of giant kelp forests in California: A community profile. *US Fish & Wildlife Service Biological Report* **85**, 1–150 (1985).
7. Dayton, P. K. The Structure and Regulation of Some South American Kelp Communities. *Ecol. Monogr.* **55**, 447–468, <https://doi.org/10.2307/2937131> (1985).
8. Schiel, D. R. & Foster, M. S. *The Biology and Ecology of Giant Kelp Forests*. 1 edn, (University of California Press, 2015).
9. Russell, B. D. *et al.* Predicting ecosystem shifts requires new approaches that integrate the effects of climate change across entire systems. *Biol. Lett.* **8**, 164–166, <https://doi.org/10.1098/rsbl.2011.0779> (2012).
10. Wong, P. P. & Losada, I. J. In *Climate Change 2014: Impacts, Adaptation and Vulnerability. Part A: Global and Sectoral Aspects. Contribution of working group II to the Fifth Assessment Report of the Intergovernmental Panel of Climate Change*. 361–409. (Cambridge Univ. Press, 2014).
11. Steneck, R. S. *et al.* Kelp forest ecosystems: Biodiversity, stability, resilience and future. *Environ. Conserv.* **29**, 436–459, <https://doi.org/10.1017/S0376892902000322> (2002).
12. Krumhansl, K. A. *et al.* Global patterns of kelp forest change over the past half-century. *Proceedings of the National Academy of Sciences* **113**, 13785–13790, <https://doi.org/10.1073/pnas.1606102113> (2016).
13. Filbee-Dexter, K. & Scheibling, R. E. Sea urchin barrens as alternative stable states of collapsed kelp ecosystems. *Mar. Ecol. Prog. Ser.* **495**, 1–25 (2014).
14. Jones, C. G., Lawton, J. H. & Shachak, M. Positive and negative effects of organisms as physical ecosystem engineers. *Ecology* **78**, 1946–1957, [https://doi.org/10.1890/0012-9658\(1997\)078\[1946:paneoo\]2.0.co;2](https://doi.org/10.1890/0012-9658(1997)078[1946:paneoo]2.0.co;2) (1997).
15. Carr, M. H. & Syms, C. In *The Ecology of California Marine Fishes*. 411–427 (2006).
16. Connell, S. D. Assembly and maintenance of subtidal habitat heterogeneity: synergistic effects of light penetration and sedimentation. *Mar. Ecol. Prog. Ser.* **289**, 53–61 (2005).

17. Arkema, K. K. *et al.* Coastal habitats shield people and property from sea-level rise and storms. *Nature Climate Change* **3**, 913, <https://doi.org/10.1038/nclimate1944>, <https://www.nature.com/articles/nclimate1944#supplementary-information> (2013).
18. Schmitz, O. J., Hawlena, D. & Trussell, G. C. Predator control of ecosystem nutrient dynamics. *Ecol. Lett.* **13**, 1199–1209, <https://doi.org/10.1111/j.1461-0248.2010.01511.x> (2010).
19. Wilmers, C. C., Estes, J. A., Edwards, M., Lairde, K. L. & Konar, B. Do trophic cascades affect the storage and flux of atmospheric carbon? An analysis of sea otters and kelp forests. *Front. Ecol. Environ.* **10**, 409–415, <https://doi.org/10.1890/110176> (2012).
20. Wernberg, T. *et al.* An extreme climatic event alters marine ecosystem structure in a global biodiversity hotspot. *Nature Climate Change* **3**, 78 (2013).
21. Graham, M. H. Effects of Local Deforestation on the Diversity and Structure of Southern California Giant Kelp Forest Food Webs. *Ecosystems* **7**, 341–357, <https://doi.org/10.1007/s10021-003-0245-6> (2004).
22. Carr, M. H. Effects of Macroalgal Dynamics on Recruitment of a Temperate Reef Fish. *Ecology* **75**, 1320–1333, <https://doi.org/10.2307/1937457> (1994).
23. Edwards, M. S. Estimating Scale-Dependency in Disturbance Impacts: El Niños and Giant Kelp Forests in the Northeast Pacific. *Oecologia* **138**, 436–447 (2004).
24. Lewontin, R. C. The meaning of stability. *Brookhaven Symp Biol* **22**, 13–24 (1969).
25. Sutherland, J. P. Multiple Stable Points in Natural Communities. *The American Naturalist* **108**, 859–873 (1974).
26. Lawrence, J. M. On the relationships between marine plants and sea urchins. *Oceanogr. mar. Biol. A. Rev* **13**, 213–286 (1975).
27. Simenstad, C. A., Estes, J. A. & Kenyon, K. W. Aleuts, Sea Otters, and Alternate Stable-State Communities. *Science* **200**, 403–411, <https://doi.org/10.1126/science.200.4340.403> (1978).
28. Rogers-Bennett, L. In *Dev. Aquacult. Fish. Sci.* Vol. 37 (ed. John M. Lawrence) 393–425 (Elsevier, 2007).
29. Bond, N. A., Cronin, M. F., Freeland, H. & Mantua, N. J. Causes and impacts of the 2014 warm anomaly in the NE Pacific. *Geophys. Res. Lett.* **42**, 3414–3420, <https://doi.org/10.1002/2015GL063306> (2015).
30. Di Lorenzo, E. & Mantua, N. Multi-year persistence of the 2014/15 North Pacific marine heatwave. *Nature Climate Change* **6**, 1042, <https://doi.org/10.1038/nclimate3082>, <https://www.nature.com/articles/nclimate3082#supplementary-information> (2016).
31. Oliver, E. C. J. *et al.* Longer and more frequent marine heatwaves over the past century. *Nature Communications* **9**, 1324, <https://doi.org/10.1038/s41467-018-03732-9> (2018).
32. McCabe, R. M. *et al.* An unprecedented coastwide toxic algal bloom linked to anomalous ocean conditions. *Geophys. Res. Lett.* **43**(10), 366–310,376 (2016).
33. Jones, T. T. *et al.* Unusual mortality of Tufted puffins (*Fratercula cirrhata*) in the eastern Bering Sea. *PLoS One* **14**, e0216532, <https://doi.org/10.1371/journal.pone.0216532> (2019).
34. Cavole, L. M. *et al.* Biological Impacts of the 2013–2015 Warm-Water Anomaly in the Northeast Pacific Winners, Losers, and the Future. *Oceanography* **29**, 273–285 (2016).
35. Sanford, E., Sones, J. L., García-Reyes, M., Goddard, J. H. R. & Largier, J. L. Widespread shifts in the coastal biota of northern California during the 2014–2016 marine heatwaves. *Scientific Reports* **9**, 4216, <https://doi.org/10.1038/s41598-019-40784-3> (2019).
36. Reid, J. *et al.* The economic value of the recreational red abalone fishery in northern California. Vol. 102 (2016).
37. Frölicher, T. L. & Laufkötter, C. Emerging risks from marine heat waves. *Nature Communications* **9**, 650, <https://doi.org/10.1038/s41467-018-03163-6> (2018).
38. Holling, C. S. R. and Stability of Ecological Systems. *Annu. Rev. Ecol. Syst.* **4**, 1–23, <https://doi.org/10.1146/annurev.es.04.110173.000245> (1973).
39. Foster, M. S. *et al.* In *Research and Discoveries: The revolution of science through Scuba*. Vol. 39, 115–132 (2013).
40. Paine, R. T., Tegner, M. J. & Johnson, E. A. Compounded perturbations yield ecological surprises. *Ecosystems* **1**, 535–545, <https://doi.org/10.1007/s100219900049> (1998).
41. Hewson, I. *et al.* Densovirus associated with sea-star wasting disease and mass mortality. *Proceedings of the National Academy of Sciences of the United States of America* **111**, 17278–17283, <https://doi.org/10.1073/pnas.1416625111> (2014).
42. García-Reyes, M., Largier, J. L. & Sydeman, W. J. Synoptic-scale upwelling indices and predictions of phyto- and zooplankton populations. *Prog. Oceanogr.* **120**, 177–188, <https://doi.org/10.1016/j.pocean.2013.08.004> (2014).
43. García-Reyes, M. & Largier, J. Observations of increased wind-driven coastal upwelling off central California. *Journal of Geophysical Research: Oceans* **115**, <https://doi.org/10.1029/2009JC005576> (2010).
44. Harvell, C. *et al.* Disease epidemic and a marine heat wave are associated with the continental-scale collapse of a pivotal predator (*Pycnopodia helianthoides*). *Science Advances* **5**, eaau7042 (2019).
45. Hewson, I. *et al.* Investigating the Complex Association Between Viral Ecology, Environment, and Northeast Pacific Sea Star Wasting. *Frontiers in Marine Science* **5**, <https://doi.org/10.3389/fmars.2018.00077> (2018).
46. Rogers-Bennett, L., Dondanville, R. F., Moore, J. D. & Vilchis, L. I. Response of red abalone reproduction to warm water, starvation, and disease stressors: Implications of ocean warming. *J. Shellfish Res.* **29**, 599–611, <https://doi.org/10.2983/035.029.0308> (2010).
47. Layton, C. *et al.* Chemical microenvironments within macroalgal assemblages: Implications for the inhibition of kelp recruitment by turf algae (2019).
48. Shilling, F. M. & Manahan, D. T. Energetics of early development for the sea urchins *Strongylocentrotus purpuratus* and *Lyttechinus pictus* and the crustacean *Artemia* sp. *Mar. Biol.* **106**, 119–127, <https://doi.org/10.1007/bf02114682> (1990).
49. Pearse, J. S. & North W. J. Marine waste disposal and sea urchin ecology. *Annu. Rep. Kelp Habit. Imp. Proj. 1969–1970, Calif. Inst. Tech., Pasadena, Appendix*, 1–87 (1970).
50. Ballesteros, E. *et al.* Deep-water stands of *Cystoseira zosteroides* C. Agardh (Fucales, Ochrophyta) in the Northwestern Mediterranean: Insights into assemblage structure and population dynamics. Vol. 82 (2009).
51. Caputi, N. *et al.* Management adaptation of invertebrate fisheries to an extreme marine heat wave event at a global warming hot spot. *Ecology and Evolution* **6**, 3583–3593, <https://doi.org/10.1002/ece3.2137> (2016).
52. Salomon, A. K. *et al.* Key Features and Context-Dependence of Fishery-Induced Trophic Cascades. *Conserv. Biol.* **24**, 382–394, <https://doi.org/10.1111/j.1523-1739.2009.01436.x> (2010).
53. Knowlton, N. Multiple “stable” states and the conservation of marine ecosystems. *Prog. Oceanogr.* **60**, 387–396, <https://doi.org/10.1016/j.pocean.2004.02.011> (2004).
54. Hughes, T. P., Bellwood, D. R., Folke, C., Steneck, R. S. & Wilson, J. New paradigms for supporting the resilience of marine ecosystems. *Trends Ecol. Evol.* **20**, 380–386, <https://doi.org/10.1016/j.tree.2005.03.022> (2005).
55. Hohman, R., Hutto, S., Catton, C. A. & Koe, F. Sonoma-Mendocino Bull Kelp Recovery Plan., 1–166. (San Francisco CA, 2019).
56. Salinger, M. J. *et al.* The unprecedented coupled ocean-atmosphere summer heatwave in the New Zealand region 2017/18: drivers, mechanisms and impacts. *Environmental Research Letters* **14**, 044023, <https://doi.org/10.1088/1748-9326/ab012a> (2019).
57. Daily, G. C. *et al.* Ecosystem services in decision making: time to deliver. *Front. Ecol. Environ.* **7**, 21–28, <https://doi.org/10.1890/080025> (2009).
58. Roberts, C. M. *et al.* Marine reserves can mitigate and promote adaptation to climate change. *Proceedings of the National Academy of Sciences* **114**, 6167–6175, <https://doi.org/10.1073/pnas.1701262114> (2017).
59. Woodson, C. B. *et al.* Harnessing marine microclimates for climate change adaptation and marine conservation. *Conservation Letters* **12**, e12609, <https://doi.org/10.1111/conl.12609> (2019).
60. Rogers-Bennett, L., Kashiwada, J. V., Taniguchi, I. K., Kawana, S. K. & Catton, C. A. Using Density-Based Fishery Management Strategies to Respond to Mass Mortality Events. *J. Shellfish Res.* **38**, 485–495 (2019).

61. Norderhaug, K. M., Christie, H., Fosså, J. H. & Fredriksen, S. Fish–macrofauna interactions in a kelp (*Laminaria hyperborea*) forest. *J. Mar. Biol. Assoc. U.K.* **85**, 1279–1286, <https://doi.org/10.1017/S0025315405012439> (2005).
62. Kushner, D. J., Rassweiler, A., McLaughlin, J. P. & Lafferty, K. D. A multi-decade time series of kelp forest community structure at the California Channel Islands. *Ecology* **94**, 2655–2655, <https://doi.org/10.1890/13-0562r.1> (2013).
63. Bengtsson, M. M., Sjøtun, K., Lanzén, A. & Øvreås, L. Bacterial diversity in relation to secondary production and succession on surfaces of the kelp *Laminaria hyperborea*. *The Isme Journal* **6**, 2188, <https://doi.org/10.1038/ismej.2012.67>, <https://www.nature.com/articles/ismej201267#supplementary-information> (2012).
64. Bennett, S. *et al.* The ‘Great Southern Reef’: social, ecological and economic value of Australia’s neglected kelp forests. *Marine and Freshwater Research* **67**, 47–56, <https://doi.org/10.1071/MF15232> (2015).
65. Vásquez, J. A. *et al.* Economic valuation of kelp forests in northern Chile: values of goods and services of the ecosystem. *J. Appl. Phycol.* **26**, 1081–1088, <https://doi.org/10.1007/s10811-013-0173-6> (2014).
66. Halpern, B. S. *et al.* Spatial and temporal changes in cumulative human impacts on the world’s ocean. *Nature Communications* **6**, 7615, <https://doi.org/10.1038/ncomms8615>, <https://www.nature.com/articles/ncomms8615#supplementary-information> (2015).
67. Krumhansl, K. A. & Scheibling, R. E. Production and fate of kelp detritus. *Mar. Ecol. Prog. Ser.* **467**, 281–302 (2012).
68. Duggins, D. O., Simenstad, C. A. & Estes, J. A. Magnification of Secondary Production by Kelp Detritus in Coastal Marine Ecosystems. *Science* **245**, 170–173, <https://doi.org/10.1126/science.245.4914.170> (1989).
69. Britton-Simmons, K. H. *et al.* Habitat and bathymetry influence the landscape-scale distribution and abundance of drift macrophytes and associated invertebrates. *Limnol. Oceanogr.* **57**, 176–184, <https://doi.org/10.4319/lo.2012.57.1.0176> (2012).
70. Feehan, C. J., Grauman-Boss, B. C., Strathmann, R. R., Dethier, M. N. & Duggins, D. O. Kelp detritus provides high-quality food for sea urchin larvae. *Limnology and Oceanography* (2017).
71. Krause-Jensen, D. & Duarte, C. M. Substantial role of macroalgae in marine carbon sequestration. *Nature Geoscience* **9**, 737, <https://doi.org/10.1038/ngeo2790>, <https://www.nature.com/articles/ngeo2790#supplementary-information> (2016).
72. Xie, X. *et al.* *Petrology and Hydrocarbon Potential of Microalgal and Macroalgal Dominated Oil Shales from the Eocene Huadian Formation, NE China*. Vol. 124 (2013).

Acknowledgements

We thank the Kelp Forest Ecosystem monitoring team from the California Department of Fish and Wildlife (CDFW) and the University of California, Davis for their work collecting this time series of ecosystem data. We thank the CDFW and UCD volunteer divers who contributed to the dive surveys over the past 20 years especially S. Kawana. We thank CDFW Captains R. Puccinelli, A. Roberts and B. Bailie and their crew for their support at sea. We thank the kelp mapping and GIS team at CDFW including M. Fredle. We thank T. Ebert and R. Strathmann for discussions about sea urchin population explosions. The data used in this paper were from a 20 year time series of northern California kelp forest monitoring conducted by the California Department of Fish and Wildlife for fisheries management in collaboration with the University of California, Davis.

Author contributions

Both authors L.R.-B. and C.C. wrote the paper, contributed to data collection and performed the analyses.

Competing interests

The authors declare no competing interests.

Additional information

Correspondence and requests for materials should be addressed to L.R.-B.

Reprints and permissions information is available at www.nature.com/reprints.

Publisher’s note Springer Nature remains neutral with regard to jurisdictional claims in published maps and institutional affiliations.



Open Access This article is licensed under a Creative Commons Attribution 4.0 International License, which permits use, sharing, adaptation, distribution and reproduction in any medium or format, as long as you give appropriate credit to the original author(s) and the source, provide a link to the Creative Commons license, and indicate if changes were made. The images or other third party material in this article are included in the article’s Creative Commons license, unless indicated otherwise in a credit line to the material. If material is not included in the article’s Creative Commons license and your intended use is not permitted by statutory regulation or exceeds the permitted use, you will need to obtain permission directly from the copyright holder. To view a copy of this license, visit <http://creativecommons.org/licenses/by/4.0/>.

© The Author(s) 2019