

RESEARCH ARTICLE

Modeling Wood Encroachment in Abandoned Grasslands in the Eifel National Park – Model Description and Testing

Silvana Hudjetz^{1,2*}, Gottfried Lennartz², Klara Krämer¹, Martina Roß-Nickoll¹, André Gergs¹, Thomas G. Preuss¹

1. Institute for Environmental Research (Biology V), RWTH Aachen University, Worringerweg 1, 52074, Aachen, Germany, 2. Research Institute for Ecosystem Analysis and Assessment (gaiac) at the RWTH Aachen University, Kackertstr. 10, 52072, Aachen, Germany

*silvana.hudjetz@gaiac.rwth-aachen



CrossMark
click for updates

OPEN ACCESS

Citation: Hudjetz S, Lennartz G, Krämer K, Roß-Nickoll M, Gergs A, et al. (2014) Modeling Wood Encroachment in Abandoned Grasslands in the Eifel National Park – Model Description and Testing. PLoS ONE 9(12): e113827. doi:10.1371/journal.pone.0113827

Editor: Ben Bond-Lamberty, DOE Pacific Northwest National Laboratory, United States of America

Received: December 13, 2013

Accepted: October 31, 2014

Published: December 10, 2014

Copyright: © 2014 Hudjetz et al. This is an open-access article distributed under the terms of the [Creative Commons Attribution License](https://creativecommons.org/licenses/by/4.0/), which permits unrestricted use, distribution, and reproduction in any medium, provided the original author and source are credited.

Funding: The development of the model was supported by the MUNLV (Ministry of the Environment, Conservation, Agriculture and Consumer Protection of the State of North Rhine-Westphalia) and the LANUV (North-Rhine-Westphalian Agency for Nature, Environment and Consumer Protection) and by the German National Academic Foundation. The funders had no role in study design, data collection and analysis, decision to publish, or preparation of the manuscript.

Competing Interests: The authors have declared that no competing interests exist.

Abstract

The degradation of natural and semi-natural landscapes has become a matter of global concern. In Germany, semi-natural grasslands belong to the most species-rich habitat types but have suffered heavily from changes in land use. After abandonment, the course of succession at a specific site is often difficult to predict because many processes interact. In order to support decision making when managing semi-natural grasslands in the Eifel National Park, we built the WoodS-Model (Woodland Succession Model). A multimodeling approach was used to integrate vegetation dynamics in both the herbaceous and shrub/tree layer. The cover of grasses and herbs was simulated in a compartment model, whereas bushes and trees were modelled in an individual-based manner. Both models worked and interacted in a spatially explicit, raster-based landscape. We present here the model description, parameterization and testing. We show highly detailed projections of the succession of a semi-natural grassland including the influence of initial vegetation composition, neighborhood interactions and ungulate browsing. We carefully weighted the single processes against each other and their relevance for landscape development under different scenarios, while explicitly considering specific site conditions. Model evaluation revealed that the model is able to emulate successional patterns as observed in the field as well as plausible results for different population densities of red deer. Important neighborhood interactions such as seed dispersal, the protection of seedlings from browsing ungulates by thorny bushes, and the inhibition of wood encroachment by the herbaceous layer, have been successfully reproduced. Therefore, not only a detailed model but also detailed

initialization turned out to be important for spatially explicit projections of a given site. The advantage of the WoodS-Model is that it integrates these many mutually interacting processes of succession.

Introduction

The degradation of natural and semi-natural landscapes has become a matter of global concern. This includes habitats in Western and Central Europe [1–3]. Semi-natural grasslands are amongst the most species-rich habitat types in Germany [4] but have suffered heavily from changes in land use [5–7]. For maintenance and restoration of species-rich grassland communities, adequate management is crucial; in many cases intensification or abandonment leads to a severe reduction in species diversity over the long term [4, 8–10]. In the case of abandonment, succession may lead to the development of persistent fallows formed by tall forbs or to a rapid encroachment of woodlands. Specific developments strongly depend on site conditions, initial states of vegetation and neighborhood interactions [11–15].

Due to the complex interactions of the many processes driving succession, it is difficult to predict wood encroachment at a specific site. Ecological modeling is considered a potentially powerful tool for ecological forecasting and its application, in the light of the increasing complexity and extent of the environmental problems [16–18]. Ecological models can provide an insight into how an ecosystem functions, and the interplay of the underlying key processes, which is essential for successful landscape management [19]. In recent decades, a lot of research has gone into the understanding and simulation of tree establishment and dynamics within closed forests, so that now whole families of forest succession models exist, some of which include the impact of ungulate browsing [20–25]. By contrast, models including wood-grassland dynamics have been restricted mainly to arid regions [26, 27]; to our knowledge, only a few models exist that simulate the encroachment of woods upon temperate grasslands in a process-based, spatially explicit way [28–30].

In order to assist in decision making when managing the vast semi-natural grassland areas in the Eifel National Park in Western Germany, we built the WoodS-Model as an extension of the previously described GraS-Model (Grassland Succession Model) [31]. The WoodS-Model simulates wood encroachment on grasslands on the landscape scale combining an individual-based (IBM) with a difference equation model. The purpose of this research was thus to develop a dynamic, spatially explicit landscape model, which integrates mutually interacting processes and can be used to predict vegetation development on a particular site. The objective of the current paper is to provide a detailed model description of the simulation of woody species and their interactions with

herbaceous species. To simulate the development of the herbaceous species, we used the GraS-Model, which has previously been described and tested [31].

In order to test the model's predictive capabilities, which is a prerequisite for use in decision making, simulation results are compared with observed vegetation data on the study site, demonstrating that the model is able to emulate successional patterns observed in the field. Additionally, we simulate the landscape development with different population densities of red deer (*Cervus elaphus* L.) and test whether the observed succession can be emulated with the current high browser density on site and whether simulations with lower densities produce plausible results, so that the model can be used to support decision making including wildlife management.

Materials and Methods

2.1. Study site

The study site covers an area of about 1,500 ha on the Dreiborner Hochfläche plateau (50°33' N, 6°23' E). It rises from about 400 m above sea level in the NE to about 580 m in the SW. Mean annual temperatures and precipitation in the NE–SW area usually range between 7.8 and 6.8°C and 900 and 1100 mm, respectively. Predominant soils are acid, silty cambisols (pH_{CaCl2}: 4–5) of shallow depth. The study site was kept unwooded by agricultural land use until 1946 and since then has been mown and grazed by sheep. In the northern and central part of the Dreiborner Hochfläche, extensive mowing and grazing have continued in order to conserve the grasslands. The southern part, by contrast, is no longer managed and is now open to natural succession [32]. The grassland areas of the Dreiborner Hochfläche are now dominated by mountainous hay meadows (*Geranio-Trisetetum*), mountain pastures (*Festuco-* and *Lolio-Cynosuretum*) and fallow grasslands dominated by tall grasses such as cocksfoot (*Dactylis glomerata* L.), common velvet (*Holcus lanatus* L.), red fescue (*Festuca rubra* L.) and tall oat (*Arrhenatherum elatius* L.) (vegetation mapping by the Eifel National Park [33] and our own surveys [34]). The establishment of common broom (*Cytisus scoparius* L.) was enhanced by the so-called “Schiffelwirtschaft”, a traditional type of agricultural land use in the Eifel, in which fields were alternately ploughed, grazed and frequently burned. Broom now dominates the scenery of the Dreiborner Hochfläche. Further shrubs include raspberry (*Rubus idaeus* L.), bramble (*Rubus* sp.), blackthorn (*Prunus spinosa* L.) and hawthorn (*Crataegus monogyna* J.). Forests of spruce (*Picea abies* L.), birch (*Betula pendula* R.), beech (*Fagus sylvatica* L.), oak (*Quercus robur* L.) and a few other woody species surround the plateau.

The model was established for semi-natural grasslands located in the center of the Eifel National Park, Germany. The permit for all fieldwork carried out for this study was issued by the Eifel National Park Administration (Landesbetrieb Wald und Holz NRW, Nationalparkforstamt Eifel). No plants or animals were disturbed

and no plants or parts thereof were removed as the study only comprised non-invasive vegetation surveys.

2.2. Model description

In the following sections, the WoodS-Model is described based on the ODD (Overview, Design concepts and Details) protocol [35]. The source code was written using the Embarcadero Delphi IDE and compiler for Object Pascal, Borland Developer Studio 2009. All objects and processes described in the text correspond to objects and methods in the source code.

2.2.1. Purpose

The main purpose of this model is to simulate the encroachment of woods on a grassland mosaic subject to various forms of land use as well as ungulate browsing in a dynamic, process-based manner. The model is intended as a decision support system for stakeholders dealing with the management of grasslands at a landscape level.

2.2.2. Scales, entities and state variables

When dealing with a landscape model, different scales must be taken into account. Whereas bushes and trees can be distinguished as single individuals within the landscape, grasses and herbs are rather perceived as the sum of those plants. In the case of grasses, owing to clonal growth, individuals can be difficult to distinguish in the field. To account for the activity of these plants on different scales, the WoodS-Model has therefore been set up using a multimodeling approach of an IBM for woody species and a difference equation model for the herb layer, which is held to be a powerful approach in recent environmental modeling [36, 37].

Both herbaceous and woody species are embedded in a spatially explicit landscape grid (Fig. 1), which contains the spatio-temporal information within the model. We chose a fine grid with a cell size of 100 m² to avoid artefacts that might occur when using a wider grid [38], e.g. when small but important features in the initial data such as field paths, hedges or small woods acting as propagule sources cannot be accounted for due to a large cell size, or when seed dispersal distances are shorter than cell length. Within this grid, the interactions between adjacent cells are managed, including seed dispersal and the vegetative spread of grasses and herbs [31]. Simulated landscapes can be large. The maximal size simulated so far was approximately 1,500 ha, i.e. 150,000 cells over a simulation time of 100 years calculated in daily time steps.

Each cell is characterized by its cell size, its X-/Y-coordinates, and the information about the form of land use (cutting, grazing, trampling), which are determined by the simulated scenario. In each cell, the growth of the herbaceous plant species and each individual agent is modelled. The agents of the WoodS-Model are the individual trees or bushes. They germinate, grow, suffer from browsing, produce and disperse seeds, and die when reaching their maximum age. Each bush and tree is characterized by species-specific parameters (Table 1). Each

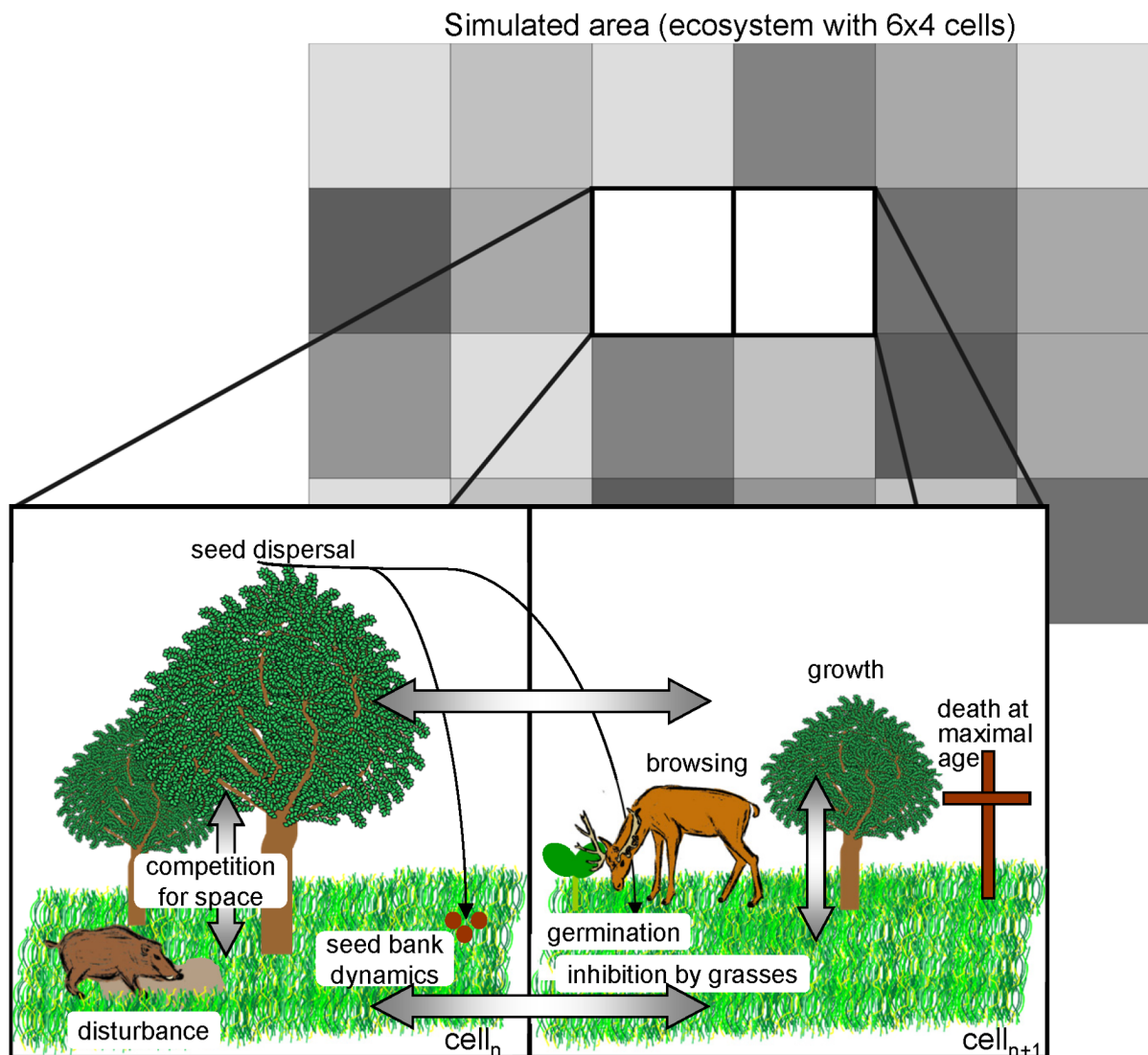


Fig. 1. Multimodeling approach: Individually modelled bushes and trees are embedded in a grid-based difference equation model. All stated processes may take place in all cells. Arrows represent interactions.

doi:10.1371/journal.pone.0113827.g001

individual's state variables are height, crown diameter, cover and age. For woody species, the composition of the herbaceous layer in each cell acts as an environmental variable (Table 1).

Species of the herbaceous layer are modelled at the population level using a difference equation approach. Their abundance is expressed as cover, so that single individuals are not distinguished and only vegetative spread of plants is considered. Model components of the herbaceous layer are provided in Table 1. The modeling approach of the herbaceous layer has been previously described in detail [31].

Shrub species under consideration in the WoodS-Model are broom, bramble and blackthorn, the most dominant species on the Dreiborner Hochfläche. As

Table 1. Model components.

Model component	Type	Abbreviation	Unit
Ecosystem			
Number of cells	parameter		–
Simulated time	parameter		a
Cells			
Cell size	parameter	A	m ²
X-Y-coordinates	parameter		–
Cutting intensity	disturbance variable	I _C	–; [0, 100]
Grazing intensity	disturbance variable	I _G	–; [0, 100]
Trampling intensity	disturbance variable	I _T	–; [0, 100]
Ungulate browsers	disturbance variable	UB	Ind 100 ha ⁻¹
Vegetation type	state variable		–
Seed bank	state variable		amount cell ⁻¹
Bushes/trees			
Growth rate	parameter	G	a ⁻¹
Maximal height	parameter	H _{max}	m
Initial height	parameter	H _{ini}	m
Maximal age	parameter	A _{max}	a
Age of maturity	parameter	A _{mat}	a
Allometric constant for crown diameter	parameter	A _{crownconst}	–
Allometric coefficient for crown diameter	parameter	A _{crowncoeff}	–
Allometric constant for biomass	parameter	A _{biomconst}	–
Allometric coefficient for biomass	parameter	A _{biomcoeff}	–
Effective seeding distance	parameter	ED	m
Maximum seeding distance	parameter	MD	m
Max. number of seeds	parameter	Seed _{max}	–
Seed loss to predators	parameter	P _{loss}	–
Germination rate	parameter	Germ	–
Decay time	parameter	Λ	a ⁻¹
Grass cover causing 50% inhibition	parameter	I50	m ²
Slope of inhibition by grasses	parameter	S	–
Height	state variable	H	m
Crown diameter	state variable	D	m
Cover	state variable	C	m ²
Age	state variable	A	a
Inhibition by grasses	state variable	I	–
Grasses/herbs (for model description see Siehoff et al. [31])			
Utilization indicator value for cutting	parameter	U _C	–; [1, 9]
Utilization indicator value for grazing	parameter	U _C	–; [1, 9]
Utilization indicator value for trampling	parameter	U _C	–; [1, 9]
Maximum growth rate	parameter	g _{max}	a ⁻¹
Factor for self-regulation	parameter	F _S	–; [0, 10000]
Cover of each species	state variable	C	m ²
Potential growth	state variable	(dc/dt) _{pot}	m ² a ⁻¹
Growth to neighbour	state variable		m ² a ⁻¹

Table 1. Cont.

Model component	Type	Abbreviation	Unit
Realized growth	state variable	$(dc/dt)_{real}$	$m^2 a^{-1}$

doi:10.1371/journal.pone.0113827.t001

bramble and blackthorn distribute vegetatively via stolons, they are modelled in the same way as grasses and herbs. Dispersal via seeds has been omitted for these species. The parameters maximal growth rate (g_{max}) and factor for self-regulation (F_s), which determine the vegetative growth [31], were set to values at which the replacement of grasses and herbs in a fallow takes several decades which is typical for poor and temporarily dry sites (Table 2).

2.2.3. Process overview and scheduling

In the model, we considered processes of seed dispersal, seed decay, germination, growth and self-thinning in woody species. These processes depend on neighborhood interactions (seed dispersal determined by the landscape pattern) and on the given management regime (influencing the herbaceous layer and the density of ungulate browsers). Management is most important for grasses and herbs; only mowing has an influence on bushes and trees directly, as individuals between the size of 0.1 and 1 m die when the area is mown. Further environmental factors affecting the vegetation are disturbance by wild boar (*Sus scrofa* L.) and ungulate browsing.

Landscape development is updated yearly, while the balance between processes is iterated in daily increments; however, no seasonal variability has been taken into account, as the model is not driven by any daily meteorological data. All cells are recalculated each increment from the upper left to the lower right. The processes are scheduled as shown in Fig. 2.

2.2.4. Design concepts

Basic principles. Woody species are modelled in an individual-based manner [39], i.e. each individual is simulated based on its life cycle and its competition with other individuals for space. The herbaceous layer is implemented on the population scale using the GraS-Model [31]. The two models, the WoodS and the GraS, are embedded in a spatially explicit, raster-based environment (Fig. 1). The herbaceous layer mechanistically interacts with individual trees by decreasing the seed availability. In the model, browsing impacts on trees are explicitly modelled in terms of removed biomass and browsing-induced mortality. Ungulate browsing intensity is accounted for by comparing the supply and demand of woody browse. As a result, wood encroachment depends on the density of ungulates and on the potential abundance of sprouting young trees. The raster-based approach allows the insertion of spatially explicit input data of the actual landscape integrating initial vegetation composition and resulting neighborhood interactions, which are crucial for the course of succession of a given landscape [11–15]. Moreover, the approach allows the simulation of various management regimes to distinct areas of the modelled landscape. The model output can be linked with a GIS to

Table 2. Characteristics of bramble (*Rubus* sp.) and blackthorn (*Prunus spinosa*).

Species	U_C [-]	U_G [-]	U_T [-]	g_{max} [d^{-1}]	F_S [-]
<i>Rubus</i> sp.	2	3	3	4.7	15000
<i>Prunus spinosa</i>	3	5	9	4.7	15000

$U_{C/G/T}$: Utilization number for cutting, grazing or trampling; g_{max} : maximum growth rate, F_S : factor for self-regulation (for explanation see Siehoff et al. [31]).

doi:10.1371/journal.pone.0113827.t002

visualized detailed raster maps, which is a precondition for the application by stakeholders who want to apply the model to existing landscapes [40].

Emergence. Bush and tree encroachment emerges from seed dispersal, seed decay, germination, growth, self-thinning, ungulate browsing and interactions with the herbaceous layer.

Sensing. In the self-thinning submodel, trees sense whether the resource space is limiting or not. When space is limiting, the smallest trees react by dying off. Browsing is sensed in the way that browsed trees cease to grow and may die at the end of the year. Furthermore, trees react to the composition of the herbaceous layer that hinders seeds from reaching the seed bank. The only management regime directly sensed by the trees is mowing, which kills saplings.

Interaction. Trees interact with their environment in terms of competition for space and the inhibition of germination by the herbaceous layer. Space is the resource that the individual trees in the WoodS-Model compete for. It is hereby used as a proxy to summarize different environmental resources such as light, nutrients and water. When space becomes limiting, self-thinning takes place and the smallest trees in one cell die. Trees are superior in succession over the bush common broom, which is modelled in the same way as the trees. Broom growth is restricted by bramble and blackthorn. Therefore, trees only compete with other tree individuals, whereas broom individuals compete with trees, bramble, blackthorn and conspecifics. Furthermore, seeds only germinate when there is space available in the given cell. For trees, available space is calculated as the space free from all trees (crown area) not including the bushes broom, bramble and blackthorn. For broom, available space only consists of the space free from trees and bushes. Competition for space only takes place within a cell, not between adjacent cells.

Tree recruitment can be strongly inhibited by the herbaceous layer, because it prevents the seeds from reaching the seed bank. Once a tree or bush has germinated, it is not hindered by grasses and herbs. Instead, it replaces grasses by virtue of the fact that space covered by trees and bushes is not available to grasses. Therefore, only the space free of trees and bushes is considered in all calculations concerning the herbaceous layer. In addition, trees are influenced by ungulate browsing.

Stochasticity. In order to take natural variation into account, several processes are calculated stochastically. When input data of a landscape is imported from a GIS map, scattered young trees and bushes are randomly clumped in grassland or shrubby vegetation types. Once a year, some of the non-forest cells are disturbed

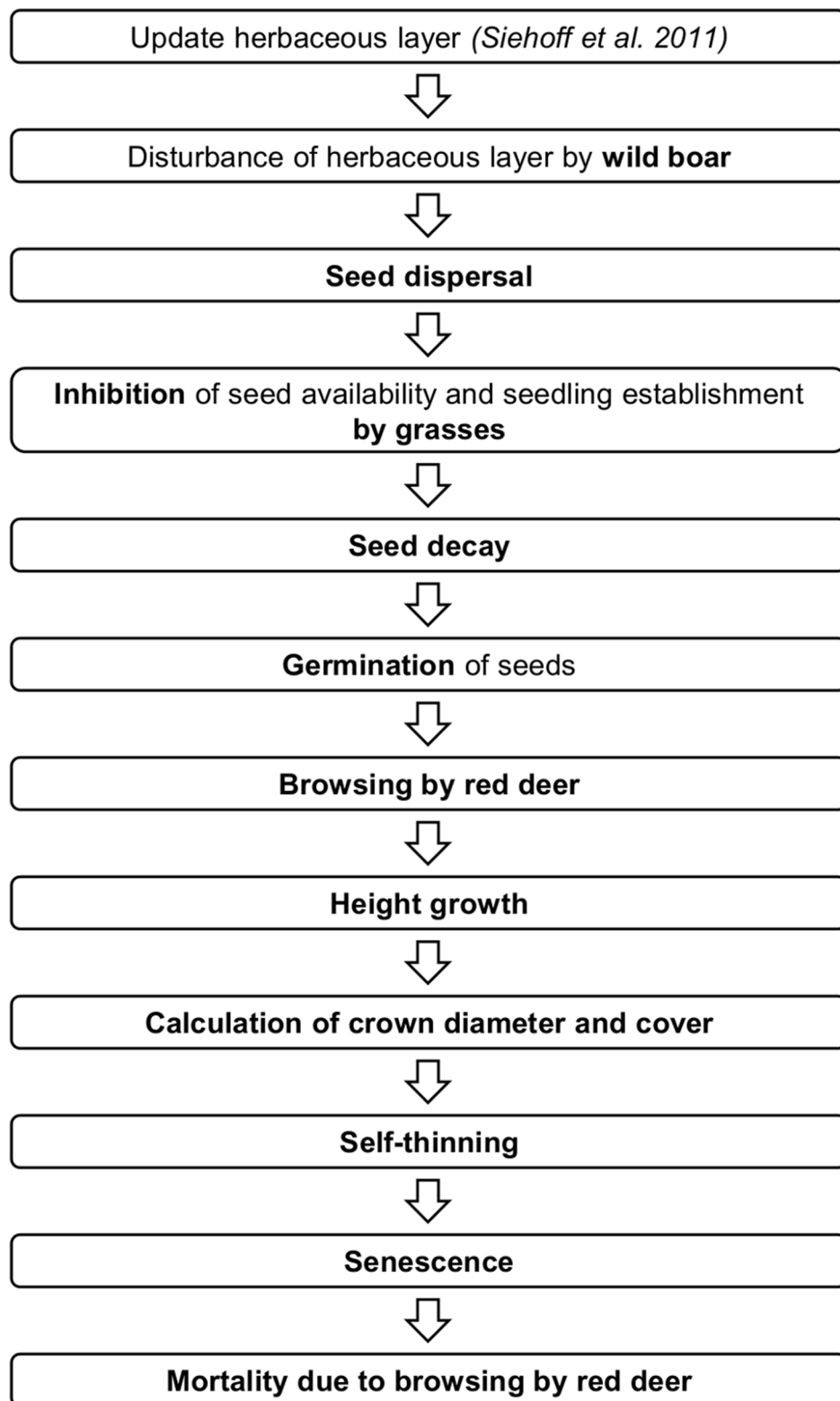


Fig. 2. Flow chart of processes taking place in the individual-based WoodS-Model.

doi:10.1371/journal.pone.0113827.g002

by wild boar; disturbed cells are chosen randomly. Furthermore, the parameters of the trees' life cycle are sampled from random distributions as follows: for each time step, the growth rate of each tree is randomly drawn from a normal distribution around its mean. For the calculation of number of seeds per tree, each year is randomly chosen to be a mast year with 70–100% of maximum amount of seeds, a year with 40–70% of seeds, a year with 10–40% of seeds or even a year without any seeds. The percentage of seeds is then randomly selected from the given range. The maximum age of a tree varies by $\pm 10\%$ of the species' maximum age for each individual. The mortality of trees due to browsing is implemented as a stochastic event.

2.2.5. Initialization

For model testing, we use simplified synthetic landscapes, for which input data can be written into ASCII files. For a realistic scenario, the simulation was initialized with data of landscape and form of land use from a detailed vegetation map of the study site [33] (originally a polygon map that was converted into a raster map in a GIS as described below). For the initialization of the vegetation composition, data for the coverage of each modelled species is needed (for details for the herb layer see Siehoff et al. [34]). Therefore, a detailed vegetation mapping of the Dreiborner Hochfläche was carried out by the national park administration [33]. Areas with a tree cover over 50% were imported as forest cells. For grassland or bush areas with scattered young trees or bushes, the amount (percentage cover) of young trees and bushes was classified by age (trees: 1, 5 years; broom: 2, 7, 10 years). Trees were assumed to show a clumped distribution. Therefore, the percentage of cells in that polygon was randomly indicated as completely covered by trees of a given age, whereas the other cells contained no trees. Most groups of bushes on the study site did not completely cover an area of 100 m² (=1 cell). To account for this observation, a proportion of cells equivalent to four times the percentage cover of bushes was assigned 25% cover of bushes for each polygon containing bushes, whilst the remainder of the cells in the polygon received zero cover.

2.2.6. Observation

The output of the model contains information about numbers, heights and covers of all trees or bushes in each cell. The cover of the species is used to define the vegetation type of each cell. Vegetation dynamics can be plotted as cover of species in each cell and total cover of species in the whole area over time. Alternatively, vegetation types for given time steps can be used to illustrate simulation results in detailed raster maps using ArcGIS9 (ESRI).

2.3. Description of submodels

2.3.1. Submodels for woody species

The simulation of woody species is divided into several submodels in accordance with their life cycle (Fig. 2). Seeds are dispersed and reach the seed bank when not

prevented from doing so by the herb layer. Afterwards, seeds germinate and seedlings and young saplings are subject to browsing. Should this browsing not take place, they grow and might die due to subsequent browsing, competition for space (self-thinning) or senescence. If they reach the age of maturity, bushes and trees disperse seeds. The corresponding submodels and equations are described in the following section. Some of the subroutines were obtained from two forest models, TreeMig and LandClim. TreeMig is based on the well-tested model ForClim [41] and was itself tested for several scenarios using different temporal and spatial scales [42, 43]. LandClim is based on the well-established model LANDIS [44, 45] and has been tested for different regions [46–48]. We did not model all woody species existing on the Dreieborner Hochfläche, but focus on the most abundant species, namely birch, broom, beech, spruce and oak, as representatives.

Seed dispersal. Once a year, mature bushes and trees disperse their seed. For the calculation of number of seeds, each year is randomly chosen as a mast year with 70–100% of maximum amount of seeds, a year with 40–70% of seeds, a year with 10–40% of seeds or even a year without any seeds. The percentage of seeds is then randomly selected from the given range. Seeds are dispersed to the surrounding cells following the LANDIS-II double exponential seed dispersal algorithm [49], so that the dispersal kernel is characterized by the effective seeding distance (ED) and the maximum seeding distance (MD) [50]. The effective seeding distance is the farthest distance to which the majority (e.g. 95% for birch) of the seeds are dispersed, whereas the remaining seeds are distributed within the maximum distance [49]. The function is normalized so that its sum over all sink cells is one:

$$p = \exp((x - \text{cellsize})(\ln(1 - k)/ED)) - \exp(x(\ln(1 - k)/ED))$$

For $x \in [\text{cellsize}, ED]$ and $\text{cellsize} \leq ED$

$$p = (1 - k)\exp((x - \text{cellsize} - ED)(\ln(0.01)/MD)) - (1 - k)\exp((x - ED)(\ln(0.01)/MD))$$

For $x \in [ED, MD]$ and $\text{cellsize} \leq ED$

- p : proportion of seeds landing in the sink cell
- x : centroid-to-centroid distance from the source cell to the sink cell
- cellsize: grid cell size (e.g. 10 m)
- ED: effective distance
- MD: maximum distance
- k : probability that the seed will disperse within the effective distance (e.g. 0.95)

For broom, oak and beech, the maximum distance reflects zoochorous dispersal by mammals (e.g. red deer) and by birds (e.g. Eurasian jay *Garrulus glandarius* L.). As the jay prefers to store its seeds in small diverse woodland patches [51],

Table 3. Parameter values for the modelled tree and bush species.

Parameter	Abbreviation	Unit	Birch	Broom	Beech	Spruce	Oak
Growth rate	G (x ± s)	[a ⁻¹]	0.03 ± 0.007 ^{f)}	0.3 ± 0.04 ^{f)}	0.024 ± 0.002	0.021 ± 0.002 ^{f)}	0.028 ± 0.004 ^{f)}
Maximal height	H _{max}	[m]	30 ¹⁾	3.7 ²⁾	45 ¹⁾	45 ¹⁾	35 ^{1*)}
Initial height	H _{ini}	[m]	0.05 ^{f)}	0.05 ^{f)}	0.05 ^{f)}	0.05 ^{f)}	0.05 ^{f)}
Maximal age	A _{max}	[a]	100 ¹⁾	12 ²⁾	350 ¹⁾	500 ¹⁾	800 ¹⁾
Age of maturity	A _{mat}	[a]	15 ³⁾	4 ⁴⁾	50 ³⁾	45 ³⁾	50 ³⁾
Allometric constant for crown diameter	A _{cd_const}	[-]	1.146 ^{f)}	0.945 ^{f)}	0.716 ^{f)}	0.880 ^{f)}	1.144 ^{f)}
Allometric coefficient for crown diameter	A _{cd_coeff}	[-]	0.791 ^{f)}	1.236 ^{f)}	1.073 ^{f)}	0.877 ^{f)}	0.929 ^{f)}
Allometric constant for biomass	A _{biomconst}	[-]	0.0044 ^{f)}	-	0.0250 ^{f)}	0.1292 ^{f)}	0.8172 ^{f)}
Allometric coefficient for biomass	A _{biomcoeff}	[-]	1.247 ^{f)}	-	2.180 ^{f)}	2.569 ^{f)}	3.746 ^{f)}
Effective seeding distance	ED	[m]	200 ⁸⁾	10 ¹⁴⁾	30 ⁸⁾	70 ⁸⁾	30 ⁸⁾
Maximum seeding distance	MD	[m]	700 ⁸⁾	500 ^{9,z)}	200 ^{9,z)}	250 ⁸⁾	200 ^{9,z)}
Proportion of seeds in ED	p _{ED}	[-]	95 ⁸⁾	97 ^{c,z)}	99 ^{5,z)}	95 ⁸⁾	99 ^{5,z)}
Max. number of seeds	Seed _{max}	[-]	11,775,000 ⁵⁾	10000 ⁴⁾	29000 ⁵⁾	96500 ⁵⁾	27500 ⁵⁾
Seed loss to predators	P _{loss}	[-]	0.8 ⁵⁾	0.8 ⁵⁾	0.8 ⁵⁾	0.8 ⁵⁾	0.8 ⁼⁵⁾
Germination rate	Germ	[-]	0.1 ⁵⁾	0.8 ⁷⁾	0.7 ⁵⁾	0.75 ⁵⁾	0.75 ⁵⁾
Decay time	λ	[a ⁻¹]	0.36 ⁵⁾	0.063 ⁶⁾	0.6 ⁵⁾	0.46 ⁵⁾	0.81 ⁵⁾
Browsing mortality	Brow _{mort}	[-]	0.1 ^{12, 13)}	-	0.2 ^{10, 11)}	0.1 ^{10, 12)}	0.2 ^{11, 12)}
Grass cover causing 50% inhibition	I ₅₀	[m ²]	29.0 ^{c)}	26.1 ^{c)}	29.5 ^{c)}	29.3 ^{c)}	29.8 ^{c)}
Slope of inhibition by grasses	S	[-]	-10 ^{c)}	-10 ^{c)}	-10 ^{c)}	-10 ^{c)}	-10 ^{c)}

x: mean, s: standard deviation.

References: ¹⁾[120], ²⁾[67], ³⁾[121], ⁴⁾[122], ⁵⁾[42], ⁶⁾[104], ⁷⁾[123], ⁸⁾[46], ⁹⁾[124], ¹⁰⁾[95], ¹¹⁾[96], ¹²⁾[125], ¹³⁾[126], ¹⁴⁾[127, 128]; *the source value was adjusted (not exceeding 15% deviation from the original value), ^{f)}fit to own data, ^{c)}manually calibrated (see text), ⁹⁾guess; ^{z)}zoochorous.

doi:10.1371/journal.pone.0113827.t003

zoochorously distributed acorns and beechnuts only land in a sink cell when this specific cell contains a minimum of one bush or tree, but is not a forest cell. Data for seed dispersal was derived from the literature as given in [Table 3](#).

Inhibition by grasses. Grasses (especially in fallows) may build up a thick layer of litter that prevents seeds from reaching the soil and hinders the germination and establishment of seedlings [11, 52–56]. For modeling the inhibition by grasses, we calculate an inhibition factor as a sigmoid function of grass cover, which is a proxy of different processes preventing seedling establishment by the herbaceous layer (see 4.1.3). The factors calculated for each single grass species, i.e. red fescue, tall oat, crested dog’s-tail (*Cynosurus cristatus* L.), perennial rye (*Lolium perenne* L.), cocksfoot and common velvet and the tufted plants (a group of perennial plants modelled in the herb layer [31]), are summed to total inhibition. This

inhibition factor I ($\in [0, 1]$) is multiplied by the number of seeds reaching the seed bank.

$$I = \max\left(1; \sum (1/(1 + \exp((c_i - I_{50})/S)))\right)$$

I : inhibition factor [-]

n : number of grasses

c_i : cover of the grass species i [m^2]

I_{50} : value of grass cover that causes an inhibition of 50% [m^2]

S : parameter defining the slope of the curve [-]

A thick grass felt develops mainly in fallow grasslands [54]. When the cell is mown or grazed, biomass is removed so that the grass sward is much weaker [57]. Therefore total inhibition is reduced by 30% for mown or grazed grasslands.

Before the seeds reach the seed bank in the sink cell, a high proportion (80%) of seeds are lost, due to non-specific predators such as mice [42]. Furthermore, grasses may hinder the seeds, so that the number of germinable seeds reaching the seed bank in one cell is calculated as:

$$N_{sb} = N_{in}(1 - P_{loss})I$$

N_{sb} : number of seeds reaching the seed bank [-]

N_{in} : seeds incoming into the sink cell [-]

P_{loss} : proportion of seeds lost to unspecific predators [-]

I : inhibition by grasses [-]; $\in [0, 1]$

The parameters I_{50} and S , which determine the inhibition of grasses for trees and broom, and the proportion of seeds in the effective seeding distance $p(ED)$ for broom were visually calibrated, so that the simulation results met patterns of bush and tree encroachment observed on the Dreiborner Hochfläche. Data used for this calibration include field surveys and analyses of aerial photographs of various authors [57–62] and our own data collected for this study [34].

Seed decay. Following the TreeMig model [42], the decay of seeds in the seed bank is calculated exponentially with species-specific parameterization (Table 3):

$$dN/dt = -\lambda N$$

dN/dt : number of seeds decaying per time step

λ : decay constant [a^{-1}]

N : number of seeds

Germination. Once a year, a fraction of the seeds in the seed bank germinates with species-specific parameterization (Table 3):

$$seedlings = N \text{ Germ}$$

seedlings: number of seedlings [-]
 N: number of seeds in the seed bank [-]
 Germ: germination rate [-]

Seeds only germinate when there is available space in the given cell. For trees, available space is calculated as the space free of all trees, not including the bushes broom, bramble and blackthorn.

$$AS_T = A - \sum trees$$

AS_T: available space for trees [m²]
 A: cell size [m²]
 Σtrees: sum of cover of all trees [m²]

For broom, available space consists only of the space free of trees and all bushes:

$$AS_C = A - \sum trees - Ps - Ru - \sum Cs$$

AS_C: available space for broom *C. scoparius* [m²]
 A: cell size [m²]
 Σtrees: sum of cover of all trees [m²]
 Ps: cover of blackthorn *P. spinosa* [m²]
 Ru: cover of bramble *Rubus* sp. [m²]
 ΣCs: sum of cover of all *Cytisus scoparius* bushes [m²]

The number of seeds germinating has been restricted to 35 tree plus 35 broom seedlings per cell to save simulation time and memory. The surplus of germinating seedlings is stored and added into the browsing equation. In fact, this artificial restriction anticipates actual browsing or self-thinning in the field. Germination rates for trees were taken from the TreeMig model [42]. The germination rate of birch was found to be too high. The high number of germinating birch seeds is strongly reduced in TreeMig by a high density-dependent mortality rate. This has not been implemented in the WoodS-Model. Therefore, the germination rate for birch was halved, resulting in a plausible seedling number for our study site.

Height growth, crown diameter and cover. Growth is modelled following a sigmoid growth curve, using a modified version of the Bertalanffy equation [63, 64]:

$$H_{(t+1)} = H_{max}(1 - (1 - (H_t/H_{max})^{(1/3)})exp - G)^3$$

$H_{(t+1)}$: height growth [$m a^{-1}$]

H_{max} : maximal height [m]

G : growth rate [a^{-1}]

Mean values for the growth rate (G) of woody species were derived by fitting the height growth equation to yield tables [65] taking mean height values of the yield classes of the Eifel National Park into account (Vollmer pers. comm.). Data for young spruce (<10 a) was obtained from Nothdurft [66]. For broom, no raw data was available, but the equation was fitted to a regression model for data gathered from a similar climatic region in France [67].

In order to take natural variation into account, values for the model parameter G were sampled from a normal distribution that requires two parameters, the mean and the standard deviation. These parameters of the random distribution function were fitted to mean height values of the yield classes and to the edges of the yield classes, respectively. For broom, the approximate minimum and maximum values as provided by Prevosto et al. [67] were taken as two standard deviations.

Crown diameter is calculated as an allometric function of height [68]:

$$D = A_{cd_const} H^{A_{cd_coeff}}$$

D : crown diameter [m]

H : height [m]

A_{cd_const} : allometric constant to calculate crown diameter [-]

A_{cd_coeff} : allometric coefficient to calculate crown diameter [-]

Based on crown diameter, the cover of the bush or tree is calculated as a circle:

$$C = (D/2)^2 \pi$$

C : cover [m^2]

Parameter values for the allometric constant (A_{const}) and allometric coefficient (A_{coeff}) were derived by fitting the equation for the calculation of crown diameter

to data of solitary bushes and trees in the Eifel National Park [69] and own measurements [34]; raw data is publicly available online.

Self-thinning. Space is the resource that the individual bushes and trees in the WoodS-Model compete for. Space is hereby used as a proxy to summarize different environmental resources such as light, nutrients and water. When space becomes limited, competition between bushes and trees results in self-thinning. Self-thinning is simulated according to Rammig et al. [64]: at the end of each time step (i.e. after growth), the crown areas of all bushes and trees in one cell are added together, and if the sum of crown areas exceeds the cell area, the smallest bush or tree dies. Common broom is inferior to trees during succession. Therefore, self-thinning is first calculated for broom, and subsequently for other woody species. Furthermore, broom also competes with bramble, blackthorn, other broom and with all tree individuals (i.e. the sum of the crown area is calculated over all broom and tree individuals plus the cover of bramble and blackthorn), whereas trees only compete with other trees. The competition between tree seedlings and bushes has not been taken into consideration, because at our site, protection from browsing with the current high population density of red deer (22 individuals per 100 ha) is likely to have a greater impact on the course of succession. This competition calculation is a simplification that we use because we do not model the vertical dimension of height and therefore light reduction for species in lower layers.

Senescence. Once a bush or tree reaches its maximal age (A_{\max}), it dies, i.e. the object is deleted. The maximum age varies by $\pm 10\%$ of the species' maximum age for each individual.

2.3.2. Wild game submodels

Disturbance by wild boar. Wild boar (*Sus scrofa* L.) plough the ground when searching for food, creating open spots and facilitating wood encroachment. In the model, 10% of hay meadows and pastures, 3% of shrubs and 1% of fallow grassland cells are randomly chosen once a year, in which 45% of the herbaceous layer is removed (percentages as observed in the field [59]). As a consequence, the grass cover is reduced, leading to a lower inhibition by grasses (see above).

Browsing by red deer. Based on a food chain approach, we link the influence of ungulates on tree establishment with the actual animal density in a given area, similar to the FORSPACE model [70]. The impact of red deer (*C. elaphus*) on succession is simulated weighting the supply of available woody browse against the ungulate demand depending on ungulate density in each cell, with “supply” referred to as the parts of woody plants that are subject to browsing and “demand” referred to as the average annual woody part of the animals' diet. Browsing impacts on trees are modelled in terms of removed biomass and browsing-induced mortality. As a result, wood encroachment depends on the density of ungulates and the potential abundance of sprouting young trees. In order to calculate the demand, first the weight of a “standard deer” is calculated as the mean weight of an individual in a “standard herd” consisting of five adult males (105 kg each), 10 adult females (70 kg each) and 20 juveniles (42.5 kg each)

Table 4. Parameter values for calculating red deer demand for woody browse.

Parameter	Abbreviation	Unit	Value	Source
Daily summer demand	Dsd	[kg dw per 100 kg red deer]	2.5	[129]
Number of summer days	sdays	[-]	214	[61]
Daily winter demand	Dwd	[kg dw per 100 kg red deer]	3.0	[129]
Number of winter days	wdays	[-]	152	[61]
Fraction of woody parts of the total food	frw	[-]	0.268	[72]

doi:10.1371/journal.pone.0113827.t004

(average weights provided by Schulte) [71]. Demand of woody browse (in dry weight, dw) per individual is furthermore calculated as:

$$D = (dsd \ sdays \ sdeer + dwd \ wdas \ sdeer) \ frw$$

D: demand of woody browse [kg dw a⁻¹]
 dsd: daily summer demand [kg dw (100 kg red deer)⁻¹]
 sdays: number of summer days [-]
 sdeer: weight of a “standard deer” [kg]
 dwd: daily winter demand [kg dw (100 kg red deer)⁻¹]
 wdays: number of winter days [-]
 frw: fraction of woody parts of the total food [-]

Data for calculating the demand for woody browse by red deer was gathered from the literature (Table 4). Data for open areas were chosen for parameterization [72]. When these values are substituted in the equation, it results in a demand for woody browse of 157.46 kg dw a⁻¹ per “standard deer”. In simulations, we applied population densities of 0, 5, 10 and 22 red deer per 100 ha⁻¹.

The supply of available browse is calculated based on the assumption that only trees up to 5 m provide forage [73], but they are only browsed up to a height of 1.7 m, which is the maximum browsing height of red deer [74]. The quantity of available browse provided by a tree has been calculated as:

$$aB = 0.024H^{1.634}$$

aB: available browse [kg dw]
 H: tree height [m]

Browsing data for birch was derived from Kalén and Bergquist [73] and the reduced maximal foraging height for red deer was adopted. As no data was available for spruce, beech and oak, we also applied the biomasses estimated for birch to these tree species.

At each browsing event, a user-defined length of a branch (here set to 0.1 m) is eaten. The browsed part of the tree is converted to biomass following the allometric function [68]:

$$B = Abiom_{const} L^{Abiom_{coeff}}$$

B: biomass [kg dw]

L: length of browsed branch [m]

Abiom_{const}: allometric constant to calculate biomass [–]

Abiom_{coeff}: allometric coefficient to calculate biomass [–]

Values for the two parameters, allometric constant (Abiom_{const}) and allometric coefficient (Abiom_{coeff}), were obtained by fitting this formula to our data on the twigs from collected trees on the Dreiborner Hochfläche (for details see [34]; raw data is publicly available online).

In the model, the ungulates are distributed evenly over the cells, in a way that in all cells the same amount of woody browse is eaten, if available. The browsed biomass from all trees and the surplus of germinating seedlings (Section 2.3.1) are summed up until the demand per cell is reached, thereafter browsing in this cell is stopped. For browsed trees, height growth is set to zero, and at the end of the year trees may die according to a species-specific browsing-induced mortality probability (Table 3). However, in the model, trees are only affected in terms of height growth by browsing up to a height of 1.7 m, when their leader shoot is still in reach of the maximum browsing height of red deer (even though trees up to a height of 5 m provide forage). Trees smaller than 0.2 m immediately die when being browsed. In the model, we did not consider any population dynamics of red deer, thus, the population density and the demand are kept constant during the simulation run. This can also be expected in reality due to actual hunting-related practices. In order to take the feeding behavior of red deer in the Eifel National Park into account, the individual trees in each cell are selected for browsing in the order of oak (most preferred), birch, beech, spruce (least preferred). Common broom does not appear to be browsed selectively in the Eifel National Park; therefore no browsing of broom is included in the model.

As thorny bushes such as blackthorn and bramble are known to act as nursery shrubs and to protect palatable tree species from browsing [56, 75–78], the demand of red deer is reduced in cells containing blackthorn and bramble by a factor $F \in [0, 1]$ according to a sigmoid function of cover:

$$F = \max(1; 1/(1 + \exp((C_P - 25)/-5)) + 1/(1 + \exp((C_R - 50)/-10)))$$

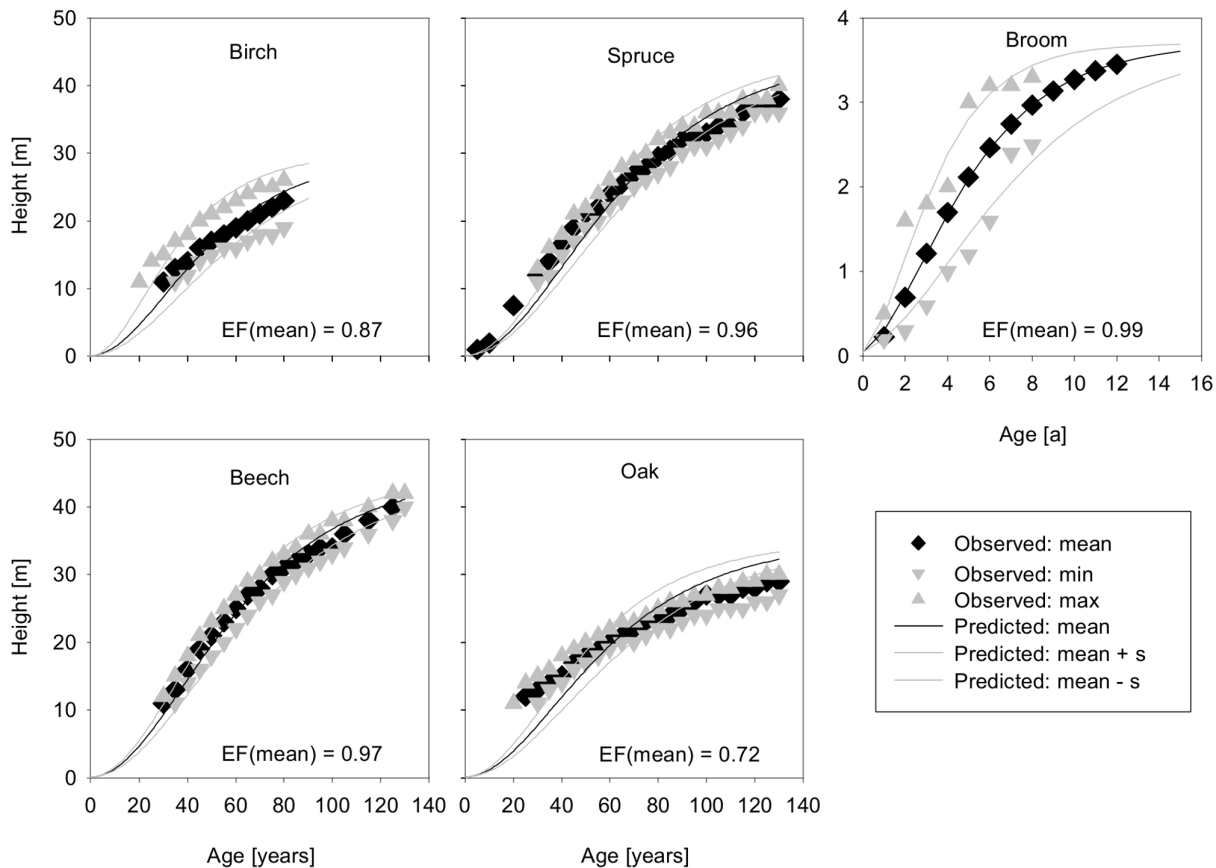


Fig. 3. Simulated growth model (black line) fitting observed data of four tree species and one bush species. Model efficiency EF is calculated as described by [119]. Grey lines are the standard deviation (2s for broom).

doi:10.1371/journal.pone.0113827.g003

F : factor [-]

$C_{P/R}$: cover of *P. spinosa* or *Rubus* sp. [m^2]

Blackthorn was found to provide a higher protection from browsing in our study area than bramble [59], as is also calculated using the above equation.

Results and Discussion

3.1. Model parameterization

Many of the model parameter values were obtained from the TreeMig and LandClim models. Remaining data gaps were closed by fitting parameter values to data collected for this study [34]. An overview of the parameter values is provided in Table 3.

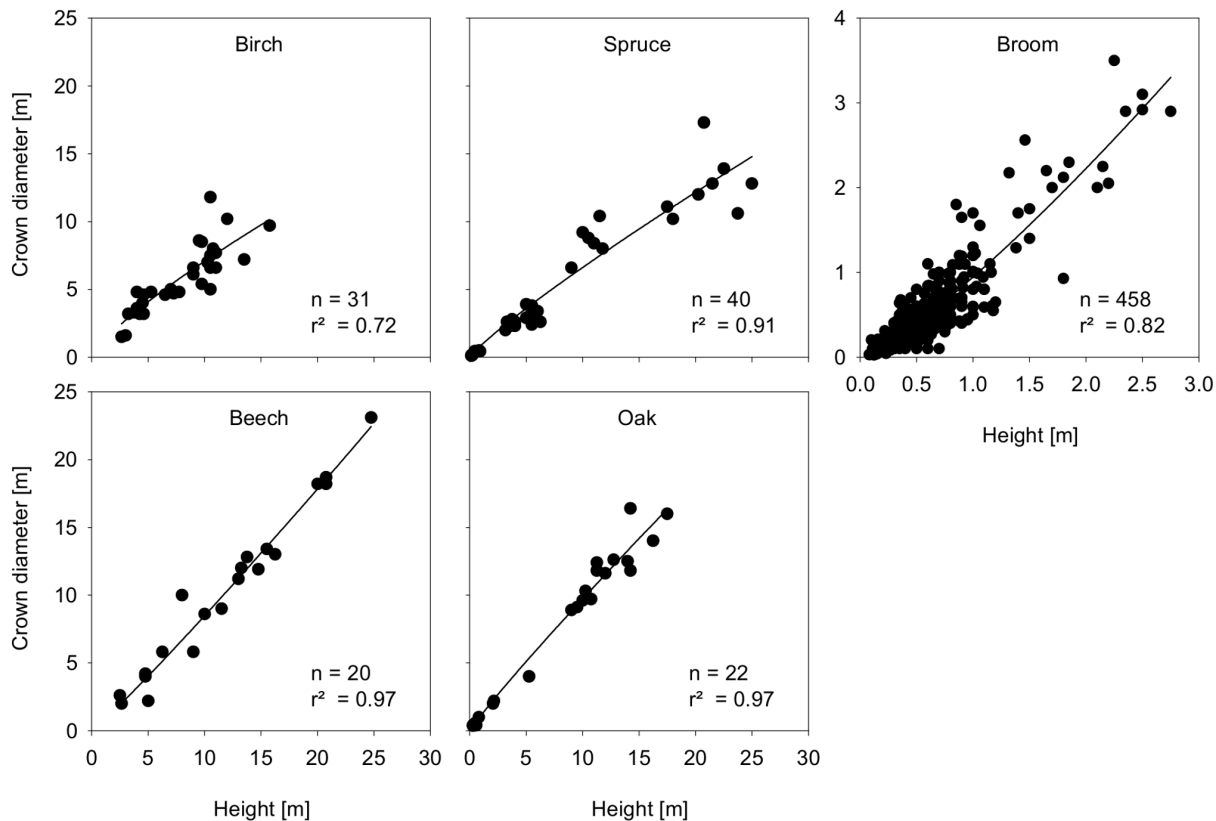


Fig. 4. Crown diameter as an allometric function of height fitting observed data of solitary bushes and trees in the Eifel National Park. Raw data is publicly available online [34].

doi:10.1371/journal.pone.0113827.g004

3.1.1. Growth of woody species

Based on our observations in the Eifel National Park, initial values for the height of woody species were set to 0.05 m, which was the minimum height found for seedlings of the modelled species. The subsequent growth of trees considered in the model is shown in Fig. 3. In general, the model fits the growth data well as indicated by the model efficiencies. However, there was a lack of data on the height growth of young birch, beech and oak trees. In particular, for oak we observed a considerable deviation between model fit and data (Fig. 3).

Survival in young age is a bottleneck for wood establishment, often determining the course of succession. Small bushes and trees particularly suffer from competition and damage by browsing. An imprecise fit of tree growth might therefore lead to an over- or underestimation of establishment under browsing. More data on the growth and survival of young saplings and different species is needed to better understand the course of succession.

Data on crown diameters corresponding to the height of woody species are generally well represented by the model (Fig. 4).

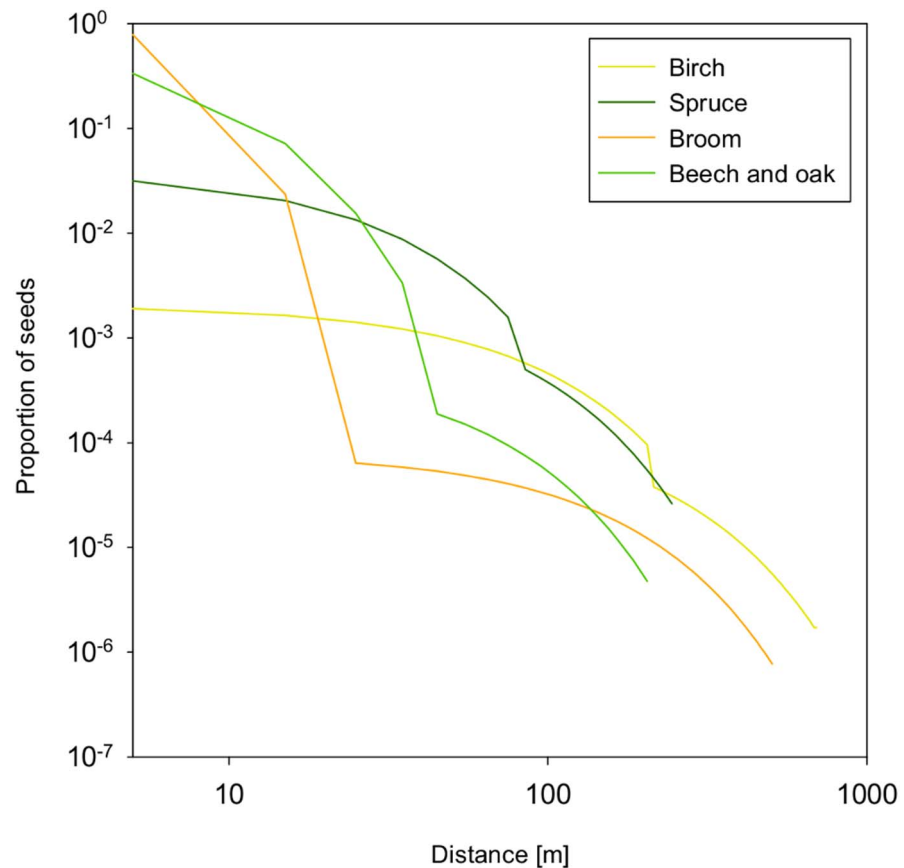


Fig. 5. Proportion of seeds landing in the sink cell along one axis for studied bushes and trees starting from one parent plant as calculated from the LANDIS II double exponential seed dispersal function [49].

doi:10.1371/journal.pone.0113827.g005

3.1.2. Seed dispersal and inhibition of wood encroachment by grasses

In the WoodS-Model we considered wind and zoochorous seed dispersal as illustrated in Fig. 5. The wind-dispersed species, birch and spruce, show a shallow dispersal curve with only a slight bend at the effective seeding distance. Broom, beech and oak, in contrast, disperse the biggest proportion of their seeds in the immediate neighborhood of the parent. Only a small number of seeds are distributed zoochorously over greater distances resulting in a sharp bend of the curves at the effective seeding distance (Fig. 5).

The encroachment of broom and trees that emerges from seed dispersal, germination and growth, without any further calibration, is illustrated in Fig. 6 for the area of 1 ha (=10 cells × 10 cells) starting with one parent plant. The wind-dispersed species, birch and spruce, spread fast and cover the simulated area in 12 and 16 years, respectively. Beech and oak spread more slowly, both reaching a maximum cover of 29% in 22 years.

Spatial spread of beech is illustrated in Fig. 7 for the same simulation run as shown in Fig. 6. In the model, the spread of beech stops when all cells within the

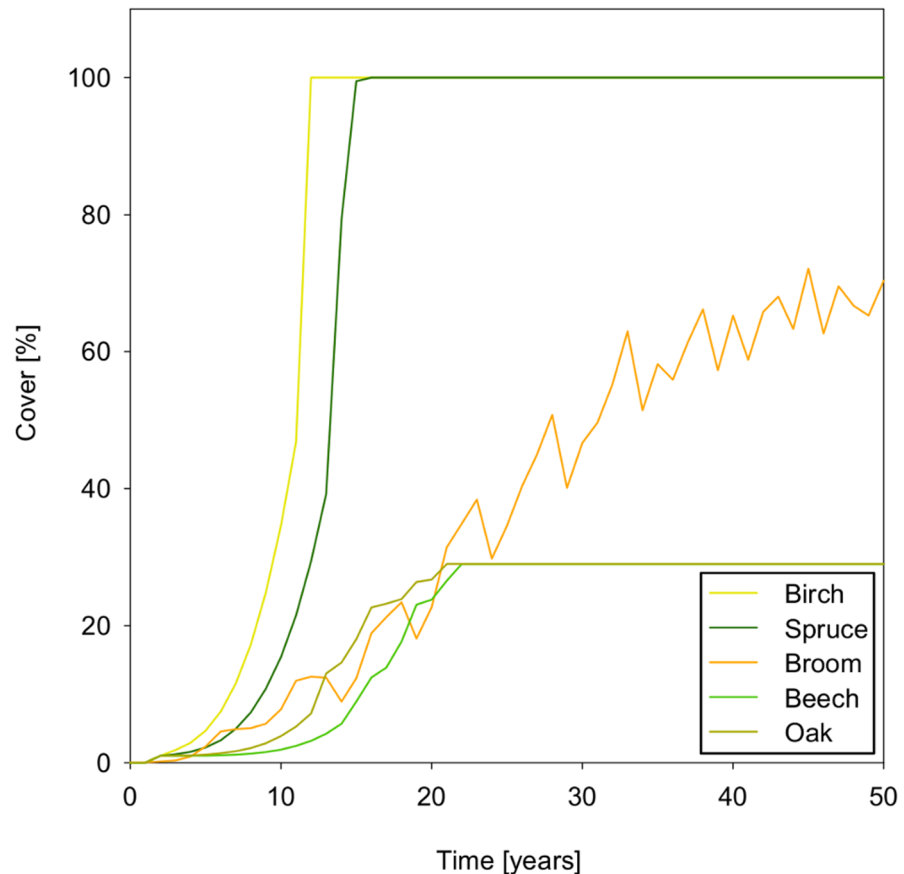


Fig. 6. Wood encroachment starting with one parent plant in a 1 ha scenario (c.f. Fig. 7) without inhibition by the herbaceous layer.

doi:10.1371/journal.pone.0113827.g006

effective seeding distance of 30 m are covered by beech. Zoochorous dispersal does not take place in this scenario, as the lack of bushes or woods would not attract jays. A further spread from the newly conquered cells does not take place within the simulated time frame, because it takes a beech tree 50 years to reach maturity. Broom shows oscillating population dynamics over time (Fig. 6) and space (Fig. 7). This oscillation might be the result of the interplay between fast maturation and death of broom individuals: fast maturation, just four years after germination, can lead to a rapid increase in population size, while the death of broom individuals at the low maximum age of 12 years leads to a decline [79, 80].

Germination of dispersed seeds, and also wood establishment, might be hindered by dense grass swards, as grasses compete with young saplings for light, nutrients and water [55, 81–83] and might suppress the germination and establishment through allelopathic effects [55, 84]. To account for these mechanisms but at the same time reduce complexity, these different processes were lumped into a single inhibition function. The inhibition factor has been calibrated using observed patterns as follows. We started the calibration process based on broom, because most data was available for this species. Therefore,

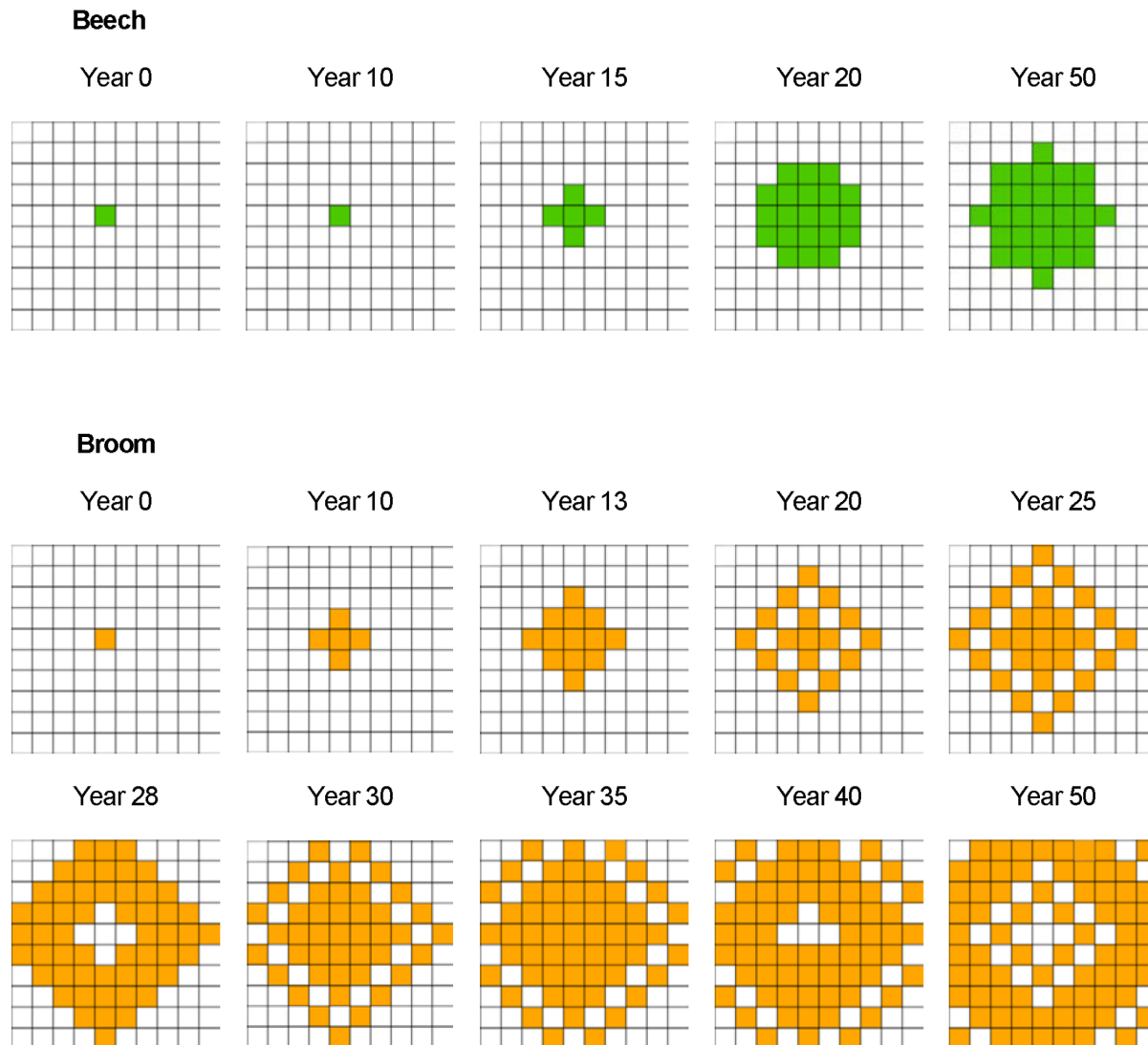


Fig. 7. Encroachment of beech (green: cells with a cover >50%) and broom (orange: cells with a cover >50%) on an area of 1 ha starting with one parent plant without inhibition by the herbaceous layer and not influenced by red deer.

doi:10.1371/journal.pone.0113827.g007

several pastures and meadows that had recently been abandoned were investigated by counting the emerging young broom individuals in the center of the pastures and calculating the mean abundance per 100 m², i.e. the size of one cell (Table 5). When investigating meadows, we made a distinction between the abundance of

Table 5. Observed mean number of broom individuals (Ind) in recently abandoned meadows and pastures on the Dreiborner Hochfläche (Heilburg (2008, unpublished), Krämer [58], Engler [57] and own data), and simulation results after calibration. n: number of field surveys.

	Meadow (edge)	Meadow (middle)	Pasture (middle)
Observation [Ind 100 m ⁻²] (n)	6.5 (6)	0.2 (10)	5.2 (16)
Simulation results [Ind 100 m ⁻²]	8.3	0.2	5.2

doi:10.1371/journal.pone.0113827.t005

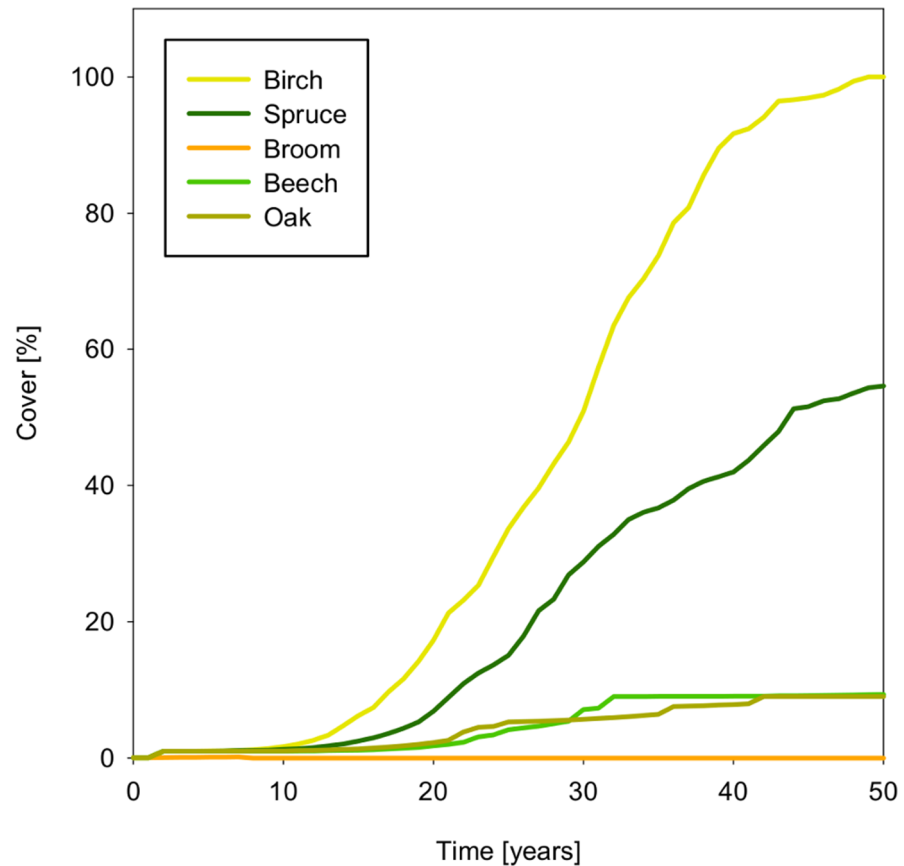


Fig. 8. Wood encroachment on a fallow grassland starting with one parent plant in a 1 ha scenario not influenced by red deer but considering the inhibition of the herbaceous layer.

doi:10.1371/journal.pone.0113827.g008

broom seedlings close to the shrub edge and the abundance in the center of the meadow. At the edge of meadows adjoining broom, i.e. within the reach of ballistic seed dispersal, many seedlings emerged in the first year after abandonment before a thick grass felt developed (Table 5). In the center of the abandoned meadows that were surrounded by broom, a few solitary bushes were established within the first year after abandonment, possibly as a result of zoochorous seed dispersal [85, 86]. In the center of the abandoned pastures, a higher number of broom bushes was observed to become established during the first year after abandonment (Table 5). The investigated fallows were surrounded by differing numbers of broom bushes. For the calibration we thus created a standard scenario using the mean surrounding broom abundance. During the calibration process, broom individuals per cell were counted, and the mean number of individuals per cell was compared to observed data (Table 5).

At the Dreiborner Hochfläche, broom was unable to reproduce in fallow grasslands that had developed thick grass felts [58, 62]. A similar inhibition was also observed for other sites [67, 80, 87, 88]. To account for this observation, the parameters I_{50} , $p(ED)$ and S (Table 3) were calibrated in a way that the simulated

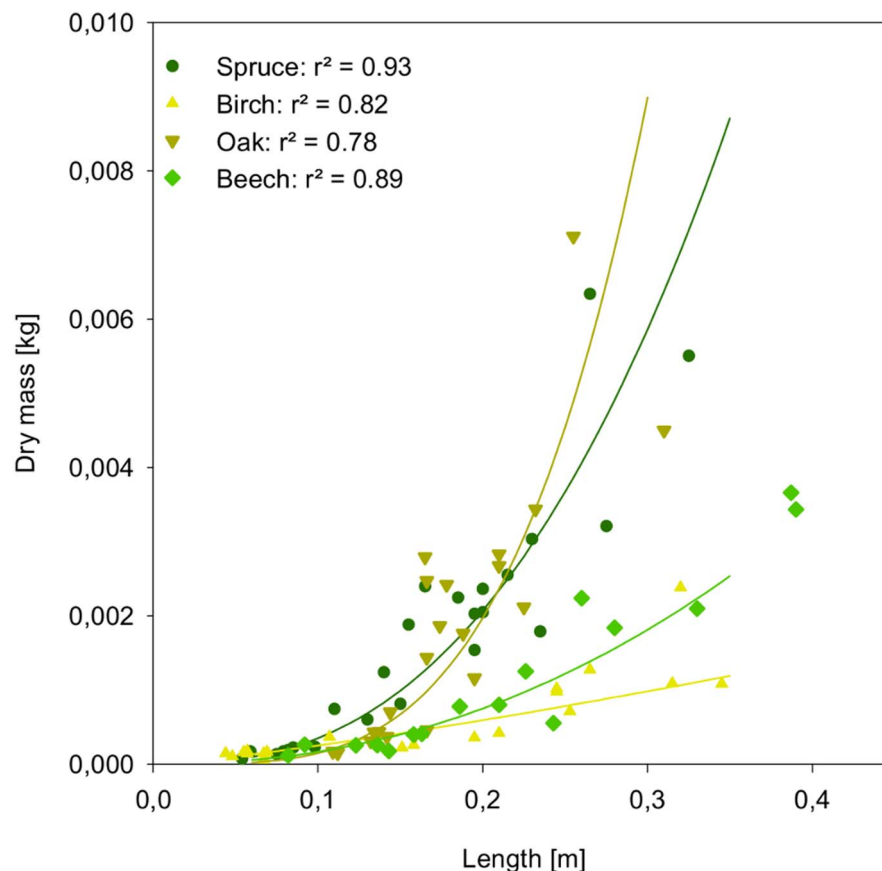


Fig. 9. Biomass of twigs as an allometric function of length fitting observed data of collected twigs (raw data is publicly available online [34]).

doi:10.1371/journal.pone.0113827.g009

mean number of broom individuals per cell recruited in the first year met the observed data (Table 5) and no further broom recruitment took place in the following simulation years.

Wood encroachment in abandoned grasslands at the Dreiborner Hochfläche is slow [61, 62]. To account for this delay in our model, we considered the inhibition of the input into the seed bank and subsequent germination of seeds by the herbaceous layer. To calibrate the inhibition function, we increased the parameter value until a delayed wood encroachment took place in a fallow of 1 ha (= 10 cells \times 10 cells), starting with one mature tree or bush and a value for the parameter I_{50} as estimated for broom (see above). The resulting simulations are displayed in Fig. 8.

3.1.3. Ungulate browsing

We explicitly modelled the influence of ungulate browsing on tree establishment under consideration of the actual animal density in a given area. Therefore, at each simulated browsing event, a defined length of branch is eaten, and the length of branches is subsequently converted into biomass as shown in Fig. 9.

For reasons of simplicity we did not consider seasonal or site-specific variation in feeding rates or food preference. However, the portion of woody browse in food and feeding preferences within woody browse might vary strongly among different sites [89,90]. Some more detailed information on the portion of woody browse in the diet of red deer is available from [72,89,91]. Red deer feed mostly on coniferous browse during the winter [92], when not much other food is available, whereas deciduous trees are more often browsed in summer [89]. Such peaks in browsing intensity during a certain time of the year might lead to greater damage than a uniform distribution, especially because trees might react differently to summer and winter browsing [93]. Furthermore, the frequency of browsing over the year might affect the browsing-related mortality [94], where smaller trees might suffer from a higher mortality than taller ones [95]. More browsing studies with an experimental design such as the ones by Harmer [96] and Vandenberghe et al. [95] are needed in order to understand the impact of ungulate browsing on tree regeneration and subsequently wood encroachment and to gain a database to parameterize browsing models for different tree species.

A further simplification in our model is that ungulate density remains constant over space and time. Yet browsing intensity is often clumped in space [89] and animal density might vary over time. Earlier simulation studies showed that this variation might influence forest regeneration, creating windows of opportunities for trees to become established [97–99]. The aforementioned data gaps and oversimplifications are likely to affect our equation comparing the supply and demand of woody browse. Yet, integrating all these additional processes and factors would lead to a more detailed model that might ensure more sophisticated simulations but, in turn, would hamper the use of the model on a large area and make parameterization even more difficult. Simulating browsing effects on a finer scale would require a much more detailed model including microclimatic conditions as done for the HUNGER model [20], which operates based on patch sizes of, for example, 0.001 ha.

3.2. Pattern-oriented model test in a landscape context

One of the main assumptions in the theory of succession is that the initial vegetation state and neighborhood relationships strongly influence the course of succession, which is also the reason why succession often strongly varies among sites [11–15]. In order to verify this assumption and additionally evaluate the effect of browsing intensity, we tested the model performance in the landscape context of our study site. First, we compared the simulation results of the status quo scenario of 22 red deer per 100 ha, which is one of the highest population densities in Central Europe [100,101], to observed landscape data [34]. Second, we investigated successional trajectories and corresponding landscape patterns employing different abundances of red deer. The simulated landscapes are independent secondary predictions and were not taken into consideration during model development and parameterization, i.e. they were not predetermined by

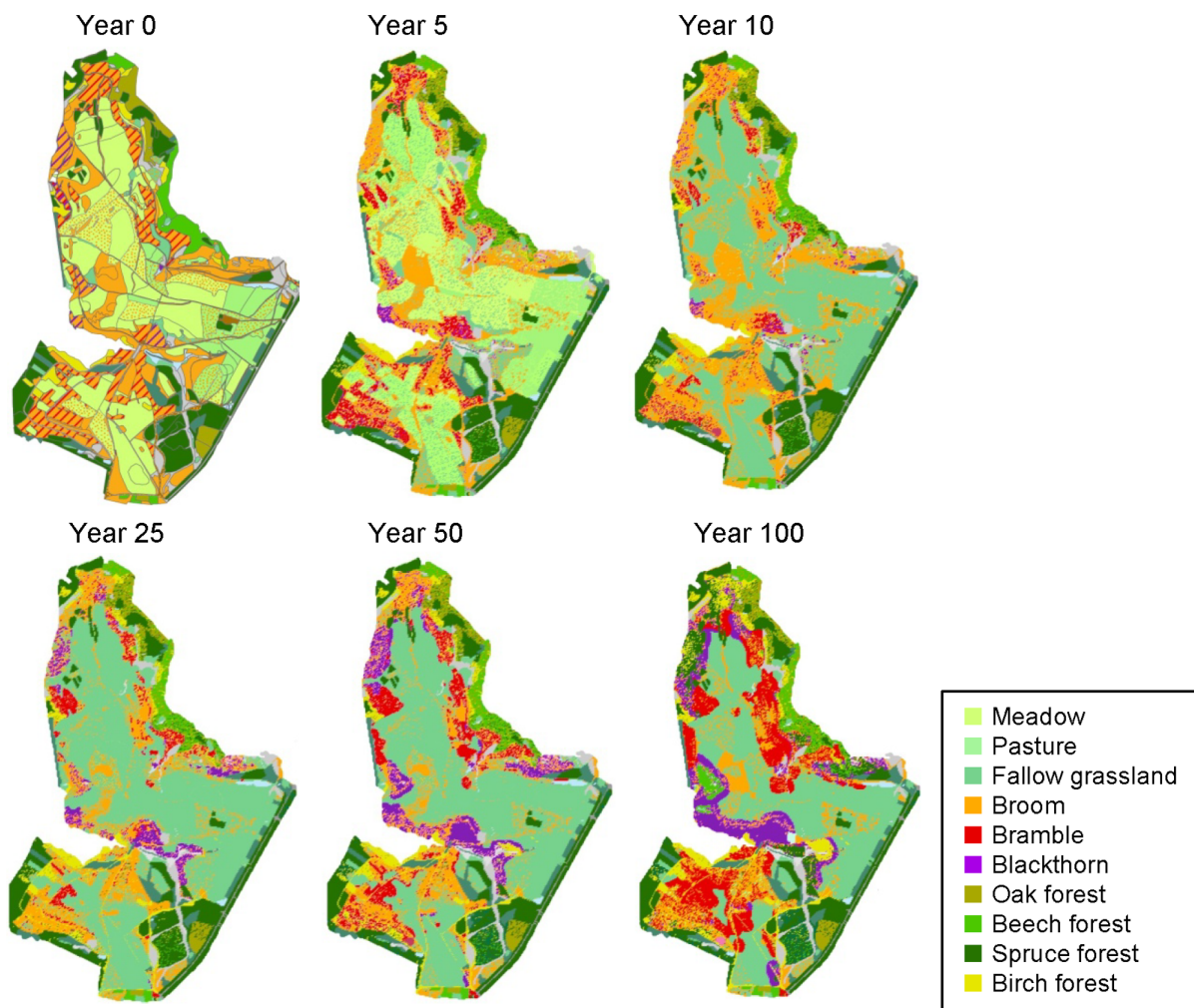


Fig. 10. Simulation of the landscape development in the southern part of the Dreiborner Hochfläche with the actual population density of red deer (22 animals per 100 ha). Names of bushes refer to shrub patches with a bush cover $\geq 10\%$. In forest cells, cover of trees is $\geq 50\%$.

doi:10.1371/journal.pone.0113827.g010

any input parameters. The pattern-oriented model test thus provides strong evidence of the predictive capability of the model [102].

3.2.1. Comparison of observed field data and simulation results

In order to provide independent data for a plausibility check of model performance, successional patterns were mapped in several field surveys of fallow areas at the Dreiborner Hochfläche [34, 57, 59, 69], for which the time of abandonment could be reconstructed from aerial photographs [59]. In order to compare the observed patterns with the model output, a part of the Dreiborner Hochfläche was simulated under conditions matching those in the areas under investigation, i.e. abandoned areas with the status quo density of red deer. The detailed vegetation map of the Dreiborner Hochfläche [33] used to initialize

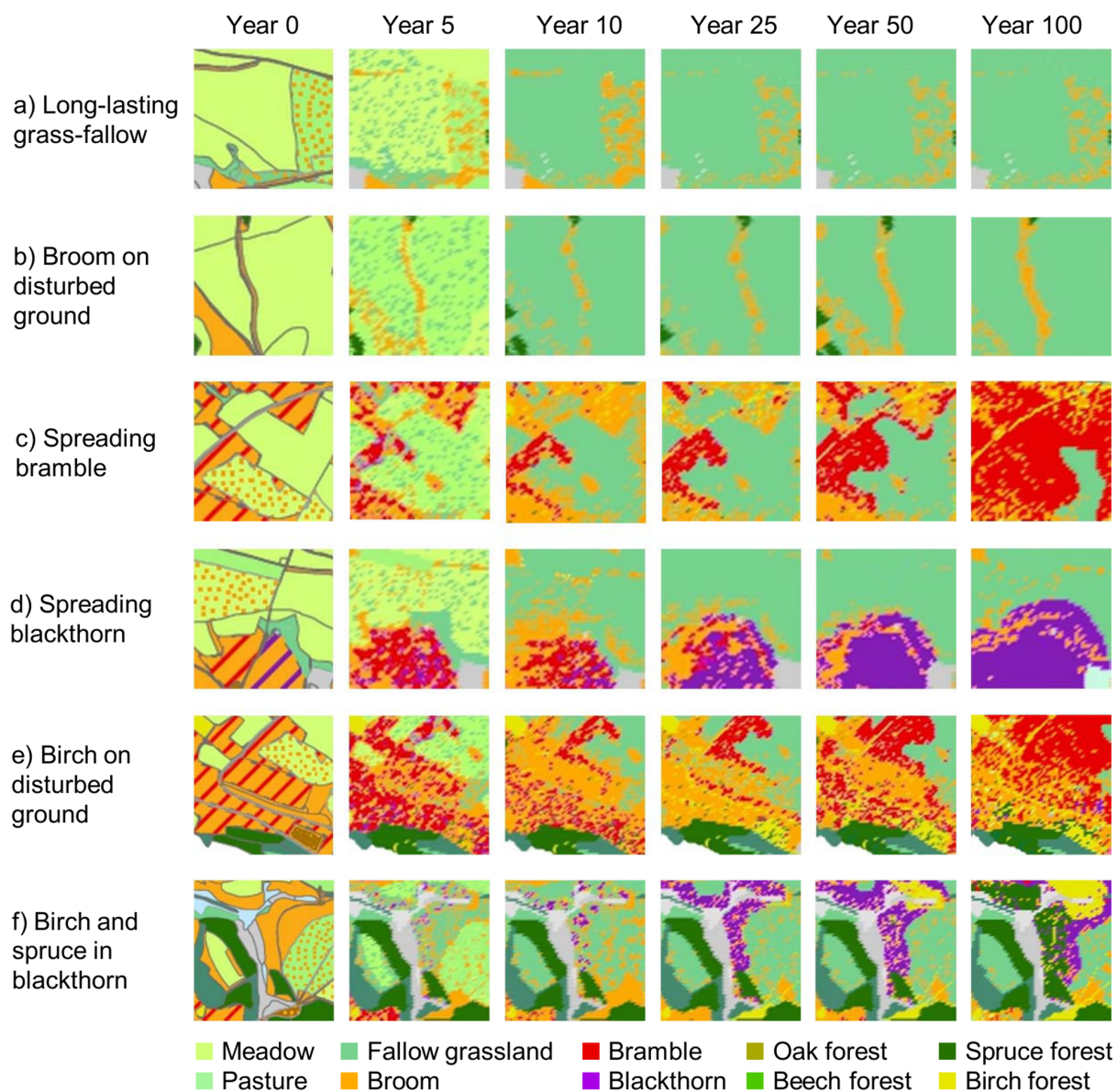


Fig. 11. Simulation: Vegetation dynamics depending on initial state and neighborhood. Details of the simulation shown in Fig. 10.

doi:10.1371/journal.pone.0113827.g011

simulations (year 0) and the model predictions for subsequent years are shown in [Fig. 10](#).

The simulated vegetation succession strongly depended on neighborhood relationships and therefore on initial vegetation as shown for partial maps in [Fig. 11](#).

Grassland areas decreased over time, as they were overgrown by bramble and blackthorn, where initials of these bushes were present ([Fig. 10](#), [Fig. 11c and d](#), [Fig. 12 b](#)). Yet, wide grassland areas in the center of the sites remained unwooded even after a simulation time of 100 years ([Fig. 10](#), [Fig. 11a](#)). In simulations, fallow

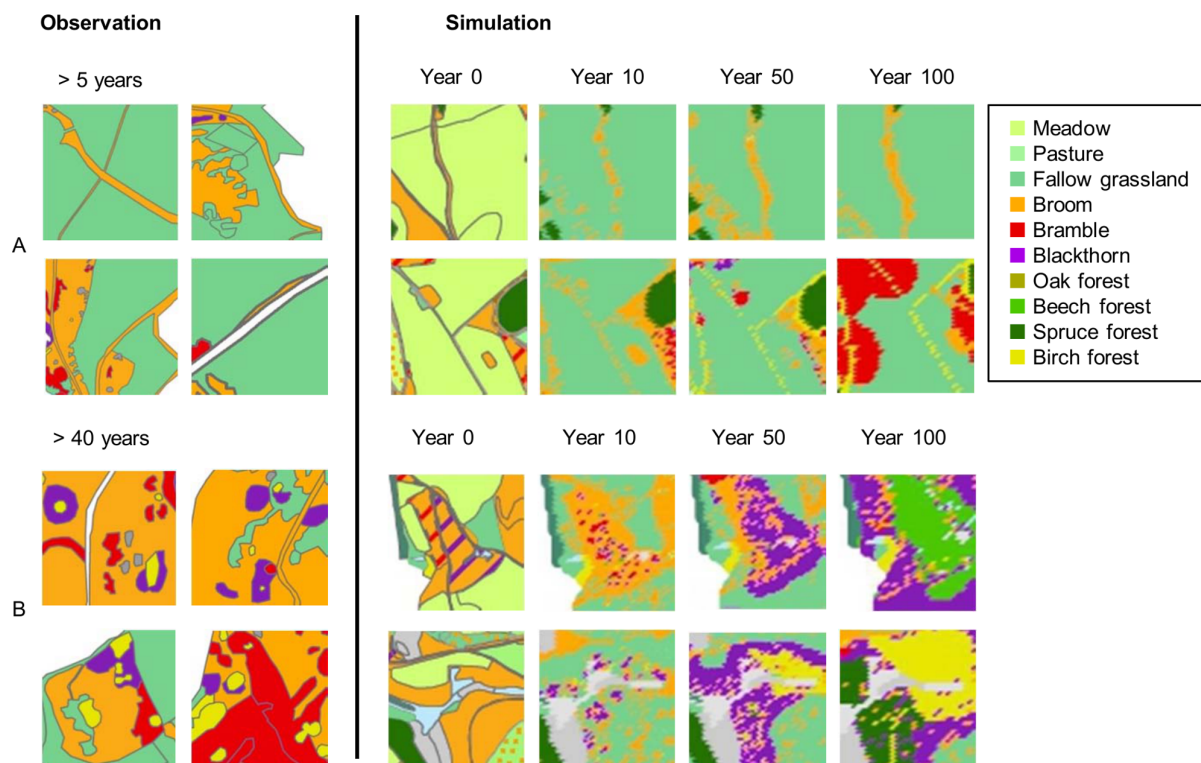


Fig. 12. Observation vs. simulation: Examples of typical patterns of succession from vegetation mapping [59] of areas of known age after abandonment, and results of simulations showing same successional patterns over time. A: Encroachment of broom on abandoned field paths. B: Spread of bramble and blackthorn into fallow grasslands and subsequent development of new forests from within thorny scrub. Since the observation is time point 0 for the simulation, a direct comparison is not possible. Therefore, we show examples of typical patterns in the observation and simulation for the same landscape. The intention is not to provide a direct comparison, but the changes of landscape structure within a given time frame.

doi:10.1371/journal.pone.0113827.g012

grassland was observed for some sites that had been abandoned for more than 40 years even close to neighboring forests (Fig. 10). The dynamics of the herbaceous layer influenced the succession of woody species, because the development of fallows dominated by tall grasses led to a strong inhibition of wood encroachment.

Broom showed oscillating population dynamics with a slight decreasing trend in the simulation (Fig. 10). Broom did not grow in fallow grassland areas, but established itself on disturbed ground, such as former field paths and sites of military disturbance (Fig. 10, Fig. 11b), and was observed on fallow field paths five years after abandonment (Fig. 12a). Field monitoring on the Dreiborner Hochfläche revealed broom establishment even though there were no propagule sources nearby [59], probably as a result of germination from long-lasting seed banks observed for this species [103, 104]. In the model, seed banks that established themselves before the start of simulation were not integrated, because their existence could not be reconstructed in the required detail. Consequently, the recruitment of broom might be underestimated in our simulation.

Bramble and blackthorn were found to play a major role in the succession on the Dreiborner Hochfläche, providing sites that were excluded from browsing (see

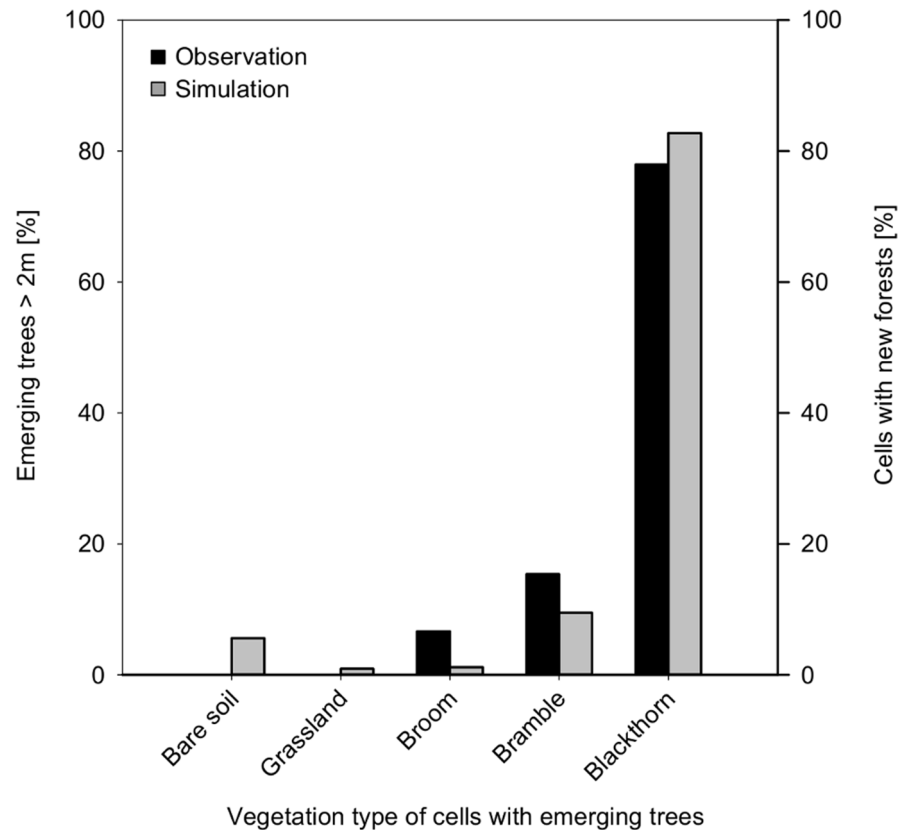


Fig. 13. Observation vs. simulation: Black bars are related to the relative number of established trees observed in the field surveys with a height >2 m [34, 57, 59, 69]. Grey bars are related to the number of simulated cells with emerging new forests.

doi:10.1371/journal.pone.0113827.g013

Figs. 10–12). As a result, patches of young forest islands, surrounded by a ring of thorny bushes, were formed within 40 years of abandonment in both field observations and model simulation (Fig. 12b).

In simulations as well as in field observations, the establishment of broom and trees was strongly hindered by dense populations of tall grasses. Regarding the association of saplings with nurse plants, simulation results align with field observations: saplings with a height > 2 m can be thought to have escaped severe browsing damage of the leader shoot, so that wood encroachment is more likely to take place. Most (78%) of the young trees of this height have been observed in blackthorn thickets, some (15%) in bramble, a few (7%) in broom thickets, and none on grassland and disturbed ground (Fig. 13), compared to simulated values of 83% for blackthorn thickets, 9% for bramble and 1% for grassland and broom each. A major difference between simulation and observation is that 6% of simulated cells, which were initially covered by bare soil, turned into new forest cells, whereas in the field no trees > 2 m were observed on these formerly disturbed grounds. This difference might be due to the way ungulate browsing is implemented in the model. In our approach, we integrated the interaction of

general tree recruitment capability and browsing effect, which is in turn influenced by the availability of woody browse. As a consequence, lower numbers of saplings result in higher browsing effects by a given density of ungulates. In contrast, at higher numbers of emerging seedlings, a given density of ungulates will not necessarily hinder the establishment of all saplings, an effect that has already been discussed by Augustine and McNaughton [99]. However, in our model, ungulate browsers are evenly distributed over the simulated cells. This may lead to an underestimation of browsing in particularly attractive cells. The importance of open ground along field paths as suitable sites for wood establishment may therefore be even higher in reality, as is already shown in the simulation. In the case of disturbed ground occurring in the vicinity of birch, simulated seedling establishment was high enough to fulfil the demand of red deer so that a sufficient number of trees survived to form a young wood patch. For the Eifel National Park it is also important that disturbance of the ungulates by visitors along frequently used field paths is not integrated in the model and browsing along these areas may therefore be overestimated in our simulation.

The development of simulated new forest cells often took 35 or even 50 to 100 years (Fig. 10, Fig. 11f, Fig. 12b). This time frame for the establishment of new forest cells is in accordance with field observations: the establishment of trees in thorny bushes was observed on sites that had been abandoned for more than 40 years (Fig. 12b). An exception to this time frame was observed for simulated birch trees becoming established on previously disturbed sites. Considerable birch recruitment took place after just 25 years on certain grassland patches that had become established on disturbed ground, such as field paths (Fig. 10, Fig. 11e). This type of grassland vegetation was not dense and was dominated by tall grasses. The number of oak and beech forests did not increase in any of the simulations. Please also note that succession within forests (e.g. from birch to beech or oak) is not included in our model.

The simulation of succession on formerly used grasslands at the Dreiborner Hochfläche produced patterns that are well documented throughout the literature: grasslands and broom shrubs are slowly overgrown by shrubs [105, 106], which act as “nurse plants” [77, 107] enhancing wood encroachment. Where no initial shrubs or disturbed sites exist within the dispersal distance of adult trees, fallow grasslands persist over several decades [11, 13]. To our knowledge, the important role these thorny bushes play in the encroachment of wood has not been integrated into other landscape models. In general, little is known about the establishment niches of these bushes [78, 108], despite their importance for the transition of grassland into wooded landscapes [9, 77, 78, 108–110].

In general, our model test reveals that the WoodS-Model is able to emulate observed patterns with the resolution of 100 m² raster cells, so that the loss of detail seems to be acceptable in the simulation on the landscape scale.

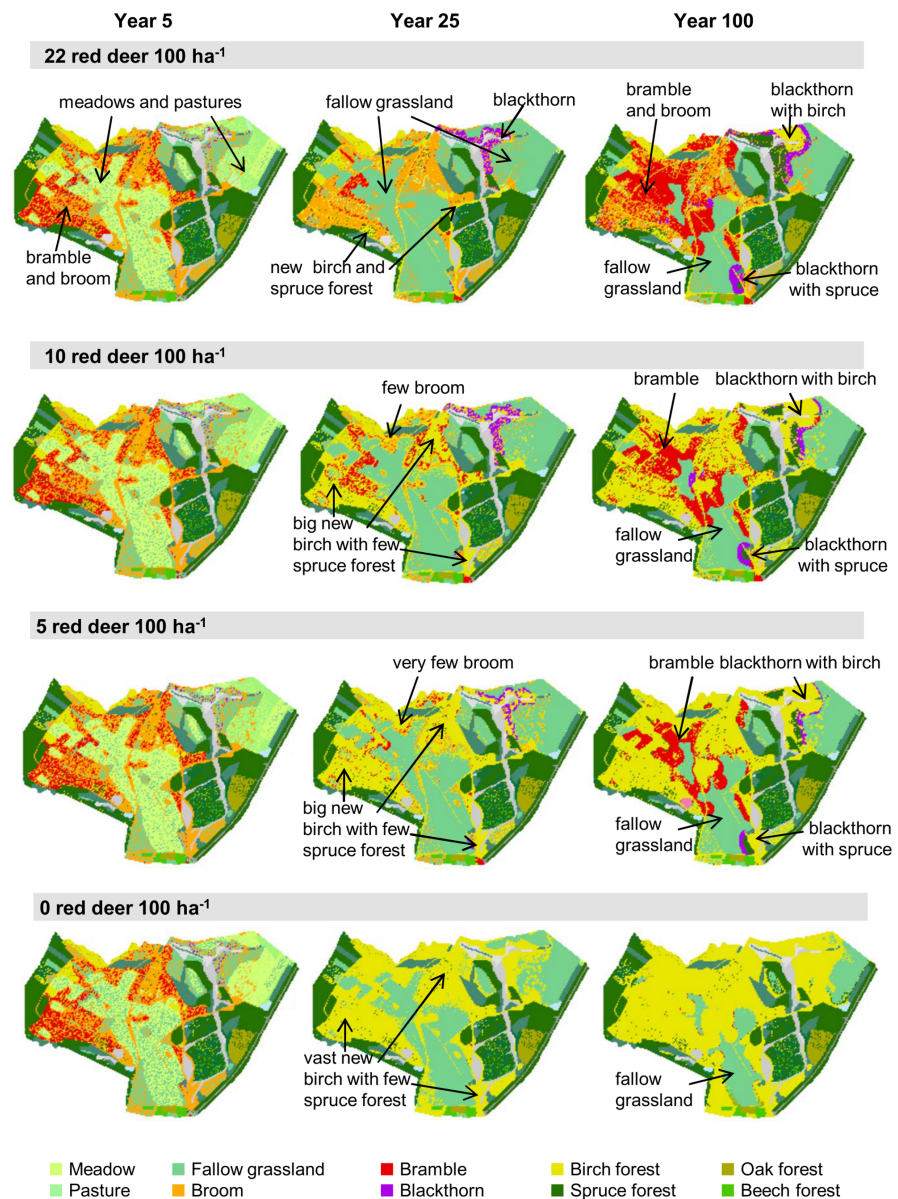


Fig. 14. Simulated vegetation development of the southern part of the Dreiberger Hochfläche if abandoned with different population densities of red deer. Initial vegetation composition as in Fig. 10.

doi:10.1371/journal.pone.0113827.g014

3.2.2. Model behavior with different population densities of red deer

In order to test the model with different abundances of red deer, we focused on the southern part of the Dreiberger Hochfläche. To check the plausibility of the model behavior and evaluate the possibility of using the WoodS-Model for decision support in wildlife management, we compared model results as derived from the status quo density simulations (Section 3.2.1) with simulated vegetation developments for lower population densities of 0, 5 and 10 red deer per 100 ha⁻¹ (Figs. 14 and 15).

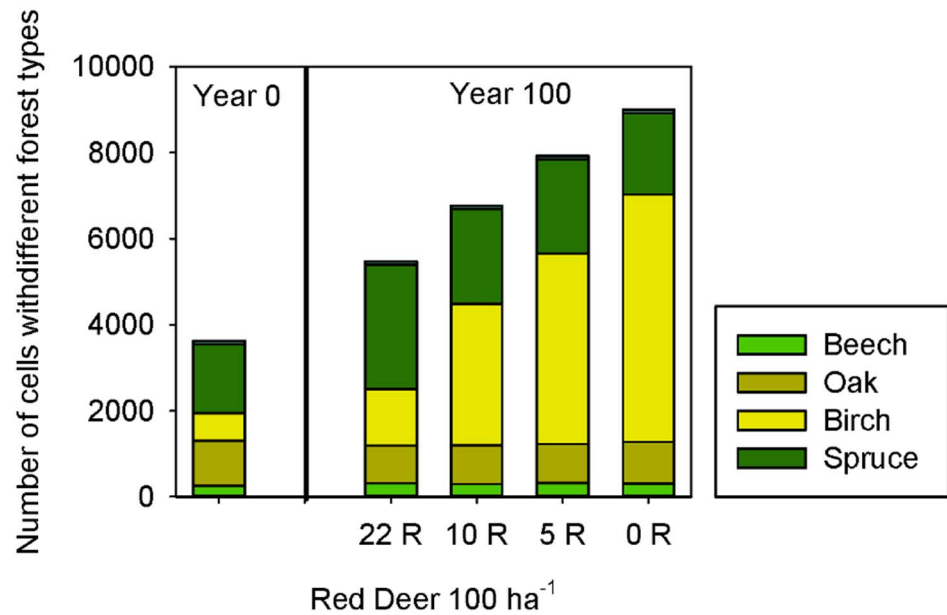


Fig. 15. Forest development after 100 simulated years in the southern part of the Dreieborner Hochfläche if abandoned with different population densities of red deer (R). Same simulation as in Fig. 14. Please note that succession within forests (e.g. from birch to beech or oak) is not included in our model.

doi:10.1371/journal.pone.0113827.g015

The predicted landscape development following abandonment strongly depended on the density of red deer in the area (Figs. 14 and 15). When considering a high density of 22 red deer per 100 ha⁻¹ in the simulation, a few wood patches developed first along abandoned field paths and later within blackthorn shrubs (Fig. 14). New emerging wood patches were formed by birch, and, to a very small extent, also by spruce. Thickets of bramble and blackthorn spread into former grasslands. While blackthorn was subsequently overgrown by emerging trees, starting at the center of the thickets, large bramble thickets persisted for more than 100 years. Broom was able to persist at sites where it was present initially, but in contrast to bramble and blackthorn did not spread into the fallow grasslands. Also, vast areas with fallow grasslands were developing a dense sward, which, in combination with the high browsing pressure from red deer, suppressed wood encroachment in these areas. The exceedingly high population density of red deer kept the succession towards forests almost in check. Usually, shrubs do not persist over such a long period of time, but are overgrown by trees [8, 105, 106, 111–115]. In this regard, it is therefore difficult to assess the further development and to evaluate model predictions. It is not clear whether, in reality, bramble and other shrub patches can persist and keep spreading over a period of 100 years as demonstrated in the simulation (where they do not age and die of senescence) or whether they degenerate and probably revert to fallow grasslands in case no tree encroachment takes place. Furthermore, bramble and blackthorn in our model only disperse vegetatively; dispersal of the berries by birds has not been accounted for. Therefore, the development of bramble and blackthorn thickets

relies on initials of these bushes in the input layer, so that important “nurse” spots may be under-represented in the model.

At lower densities of 5 and 10 red deer per 100 ha⁻¹, more birch forests developed compared to status quo density simulations, which were restricted mainly to former broom and bramble patches. However, the amount of emerging spruce remained more or less the same (Figs. 14 and 15). These new forests overgrew all broom shrubs and most of the bramble and especially blackthorn thickets, so that only small areas of these thorny bushes remained at the borders between forests and fallow grasslands. In line with many grassland succession trajectories [8, 105, 106, 111–116], in our simulations using the non-interference scenario without any red deer, existing shrub patches were rapidly overgrown by emerging trees, and most grassland areas developed into woods, mainly birch forests, over the simulation period of 100 years. Fallow grasslands that are located at a distance from seed sources remained unwooded due to low seed availability and high inhibition of emergence by grasses. Even though the forests kept encroaching on the fallow grasslands, big unwooded areas remained after 100 simulated years.

Overall, the model produces plausible simulation results with different abundances of red deer. The simulated restricted wood encroachment with the current extraordinary high population density is in line with the observations, whereas regularly observed succession [105, 112, 113] takes place under lower browsing pressure.

Conclusion

The comparison of landscape development patterns emerging from the simulated processes with observed data reveals that the WoodS-Model is able to adequately mimic spatio-temporal dynamics on the landscape scale. Based on the principle of structural realism [117], observed patterns have been reproduced in a highly realistic way on a spatial scale for the example of shrub development, and on a temporal scale for short- to middle-term succession patterns. We showed that the interacting processes of competition for space, wood recruitment, inhibition by the herbaceous layer, ungulate browsing and facilitation by nurse plants are sufficient to emulate observed patterns, whereby model parameterization is based, to a large extent, on field data. The model thereby provides a highly detailed picture of succession at the given landscape by considering neighborhood relationships in the spatio-temporal frame of grassland-to-wood succession.

Vegetation development varies among different parts of the landscape. Small structural landscape elements such as abandoned field paths, or initial shrub and wood patches, are capable of considerably determining vegetation development. In particular, the location of seed sources such as mature bushes and trees influences wood encroachment, and once a seed has reached a particular site, local patch conditions need to allow for a successful establishment of young saplings. Moreover, biotic interactions, such as germination depending on herbaceous

dynamics and ungulate browsing, can be crucial for the course of vegetation development. Structural landscape elements and initial vegetation composition are known to determine the course of succession, in particular for wood encroachment on grasslands, so that predictions are often difficult to make [15, 118]. Neighborhood effects, which may determine, for instance, the existence and location of seed sources and initials of shrubs, have been shown to highly influence the succession in both our simulation study and our space-for-time field observations.

Process-based and spatially explicit modeling approaches, such as the presented WoodS-model, allow neighboring and biotic interaction in the evaluation of certain isolated processes in various landscape scenarios to be accounted for, and predictions about future landscape states to be made. The advantage of the WoodS-Model as a decision support system in particular is that it integrates many important and mutually interacting processes determining the course of succession. Due to the generality of these processes, the model can easily be transferred to other sites and, thus, has a potentially widespread applicability. The assessment of projected impact on the landscape as a result of different simulated management scenarios can assist stakeholders in choosing suitable strategies regarding open grassland management.

Acknowledgments

We would like to thank the Eifel National Park Administration for their support and cooperation. Many thanks also to Ira C. Heilburg for performing part of the field surveys as a student intern.

Author Contributions

Conceived and designed the experiments: SH GL MR TGP. Performed the experiments: SH KK. Analyzed the data: SH KK GL TGP. Contributed reagents/materials/analysis tools: GL MR TGP. Wrote the paper: SH GL AG TGP.

References

1. **CBD** (2010) Fourth National Report under the Convention on Biological Diversity (CBD) – Germany. Available: <http://www.cbd.int/reports/search/>.
2. **Poschlod P, Bakker JP, Kahmen S** (2005) Changing land use and its impact on biodiversity. *Basic and Applied Ecology* 6: 93–98.
3. **GBO3** (2010) Secretariat of the Convention on Biological Diversity. *Global Biodiversity Outlook 3—Executive Summary*. Montreal.
4. **Lind B, Stein S, Kärcher A, Klein M** (2009) *Where have all the flowers gone? Grünland im Umbruch*. Bonn: German Federal Agency for Nature Conservation (BfN).
5. **EU-COM**. Composite Report on the Conservation Status of Habitat Types and Species as required under Article 17 of Habitats Directive, Report from the Commission to the Council and the European Parliament. COM (2009) 358 final; 2009; Brussels.

6. **Stoate C, Báldi A, Beja P, Boatman ND, Herzon I, et al.** (2009) Ecological impacts of early 21st century agricultural change in Europe – A review. *Journal of Environmental Management* 91: 22–46.
7. **Isselstein J, Jeangros B, Pavlu V** (2005) Agronomic aspects of biodiversity targeted management of temperate grasslands in Europe— a review. *Agronomy Research* 3: 139–151.
8. **Dierschke H, Briemle G** (2002) *Kulturgrasland*; Pott R, editor. Stuttgart: Ulmer. 220 p.
9. **Kleyer M** (2007) Mosaic cycles and conservation management. *Basic and Applied Ecology* 8: 293–294.
10. **Kleijn D, Kohler F, Baldi A, Batary P, Concepcion ED, et al.** (2009) On the relationship between farmland biodiversity and land-use intensity in Europe. *Proceedings of the Royal Society B-Biological Sciences* 276: 903–909.
11. **Ellenberg H** (1996) *Vegetation Mitteleuropas mit den Alpen*. 5. Auflage. Stuttgart: Eugen Ulmer. 1095 p.
12. **Smith R, Olf H** (1998) Woody species colonisation in relation to habitat productivity. *Plant Ecology* 139: 203–209.
13. **Müller J, Rosenthal G** (1998) *Brachesukzessionen – Prozesse und Mechanismen*; Universität Hohenheim. pp. 103–132.
14. **Prach K, Rehounkova K** (2006) Vegetation succession over broad geographical scales: which factors determine the patterns? *Preslia* 78: 469–480.
15. **Schreiber KF** (1997) Characteristics of succession in 20 years' abandoned grassland studies in Baden-Württemberg. *Forstwissenschaftliches Centralblatt* 116: 243–258.
16. **Clark JS, Carpenter SR, Barber M, Collins S, Dobson A, et al.** (2001) Ecological forecasts: an emerging imperative. *Science* 293: 657–660.
17. **Jeltsch F, Moloney KA, Schurr FM, Kochy M, Schwager M** (2008) The state of plant population modelling in light of environmental change. *Perspectives in Plant Ecology Evolution and Systematics* 9: 171–189.
18. **Thuiller W, Albert C, Araujo MB, Berry PM, Cabeza M, et al.** (2008) Predicting global change impacts on plant species' distributions: future challenges. *Perspectives in Plant Ecology Evolution and Systematics* 9: 137–152.
19. **Brouwer E, Duinen G-Jv, Nijssen M, Esselink H** (2005) Development of a decision support system for LIFE-Nature and similar projects: from trial-and-error to knowledge-based nature management. In: Herrier J-L, Mees J, Salman A, Seys J, Nieuwenhuysen HV, et al., editors. *Koksijde, Belgium. VLIZ Special Publication.*, pp. 229.
20. **Weisberg PJ, Bonavia F, Bugmann H** (2005) Modeling the interacting effects of browsing and shading on mountain forest tree regeneration (*Picea abies*). *Ecological Modelling* 185: 213–230.
21. **Kramer K, Groot Bruinderink GWTA, Prins HHT** (2006) Spatial interactions between ungulate herbivory and forest management. *Forest Ecology and Management* 226: 238–247.
22. **Rammig A, Fahse L, Bebi P, Bugmann H** (2007) Wind disturbance in mountain forests: simulating the impact of management strategies, seed supply, and ungulate browsing on forest succession. *Forest Ecology and Management* 242: 142–154.
23. **Bugmann H** (2001) A review of forest gap models. *Climatic Change* 51: 259–305.
24. **Scheller R, Mladenoff D** (2007) An ecological classification of forest landscape simulation models: tools and strategies for understanding broad-scale forested ecosystems. *Landscape Ecology* 22: 491–505.
25. **Pretzsch H, Grote R, Reineking B, Rotzer T, Seifert S** (2008) Models for forest ecosystem management: the reduced maximal foraging height for red deer was adopted a European perspective. *Annals of Botany* 101: 1065–1087.
26. **Kochy M, Mathaj M, Jeltsch F, Malkinson D** (2008) Resilience of stocking capacity to changing climate in arid to Mediterranean landscapes. *Regional Environmental Change* 8: 73–87.
27. **Peters DPC** (2002) Plant species dominance at a grassland-shrubland ecotone: an individual-based gap dynamics model of herbaceous and woody species. *Ecological Modelling* 152: 5–32.
28. **Gillet F** (2008) Modelling vegetation dynamics in heterogeneous pasture-woodland landscapes. *Ecological Modelling* 217: 1–18.

29. **Peringer A, Siehoff S, Chételat J, Spiegelberger T, Buttler A, et al.** Past and future landscape dynamics in wooded pastures of the Jura Mountains under land-use and climate change. *Ecology and Society*. In press.
30. **Peringer A, Rosenthal G** (2011) Establishment patterns in a secondary tree line ecotone. *Ecological Modelling* doi:10.1016/j.ecolmodel.2011.05.025.
31. **Siehoff S, Lennartz G, Heilburg IC, Roß-Nickoll M, Ratte HT, et al.** (2011) Process-based modeling of grassland dynamics built on ecological indicator values for land use. *Ecological Modelling* 222: 3854–3868.
32. **Pardey A, Rööß M, Spors H-J, Dalbeck L, Petrak M** (2008) Nationalpark Eifel: Nationalparkplan. Band 1: Leitbild und Ziele: Landesbetrieb Wald und Holz NRW, Schleiden-Gemünd.
33. **Nationalparkverwaltung Eifel Nationalparkplan Eifel Band 2.** Bestandsanalyse. Schleiden-Gemünd. In press.
34. **Siehoff S** (2011) Succession of semi-natural grasslands: spatially-explicit, mechanistic simulation considering various forms of land use. PhD-Thesis. Aachen: RWTH Aachen University. Available: <http://darwin.bth.rwth-aachen.de/opus3/volltexte/2011/3853/pdf/3853.pdf>.
35. **Grimm V, Berger U, DeAngelis DL, Polhill JG, Giske J, et al.** (2010) The ODD protocol A review and first update. *Ecological Modelling* 221: 2760–2768.
36. **Gross LJ, DeAngelis DL** (2002) Multimodeling: new approaches for linking ecological models. *Predicting Species Occurrences: Issues of Accuracy and Scale*: 467–474.
37. **Vincenot CE, Giannino F, Rietkerk M, Moriya K, Mazzoleni S** (2011) Theoretical considerations on the combined use of system dynamics and individual-based modeling in ecology. *Ecological Modelling* 222: 210–218.
38. **Bithell M, Macmillan WD** (2007) Escape from the cell: spatially explicit modelling with and without grids. *Ecological Modelling* 200: 59–78.
39. **Grimm V, Railsback SF** (2005) *Individual-based modeling & ecology*. Oxford: Princeton University Press. 448 p.
40. **Rammig A** (2005) Disturbance in mountain forests: analysing, modelling and understanding successional processes after blowdown events. PhD Thesis., Zurich, Switzerland: Swiss Federal Institute of Technology.
41. **Bugmann H** (1994) On the ecology of mountainous forests in a changing climate: a simulation study. PhD Thesis. Zurich: Swiss Federal Institute of Technology.
42. **Lischke H, Zimmermann NE, Bolliger J, Rickebusch S, Löffler TJ** (2006) TreeMig: a forest-landscape model for simulating spatio-temporal patterns from stand to landscape scale. *Ecological Modelling* 199: 409–420.
43. **Rickebusch S, Lischke H, Bugmann H, Guisan A, Zimmermann NE** (2007) Understanding the low-temperature limitations to forest growth through calibration of a forest dynamics model with tree-ring data. *Forest Ecology and Management* 246: 251–263.
44. **He HS, Mladenoff DJ** (1999) Spatially explicit and stochastic simulation of forest-landscape fire disturbance and succession. *Ecology* 80: 81–99.
45. **Syphard AD, Yang J, Franklin J, He HS, Keeley JE** (2007) Calibrating a forest landscape model to simulate frequent fire in Mediterranean-type shrublands. *Environmental Modelling & Software* 22: 1641–1653.
46. **Schumacher S** (2004) The role of large-scale disturbances and climate for the dynamics of forested landscapes in the European Alps. PhD Thesis. Zurich: Swiss Federal Institute of Technology.
47. **Schumacher S, Bugmann H, Mladenoff DJ** (2004) Improving the formulation of tree growth and succession in a spatially explicit landscape model. *Ecological Modelling* 180: 175–194.
48. **Schumacher S, Reineking B, Sibold J, Bugmann H** (2006) Modeling the impact of climate and vegetation on fire regimes in mountain landscapes. *Landscape Ecology* 21: 539–554.
49. **Ward BC, Scheller RM, Mladenoff DJ** (2004) Technical Report: LANDIS-II Double Exponential Seed Dispersal Algorithm: Dept. Forest Ecology and Management, University of Wisconsin-Madison.

50. **He HS, Mladenoff DJ** (1999) The effects of seed dispersal on the simulation of long-term forest landscape change. *Ecosystems* 2: 308–319.
51. **Bossema I** (1979) Jays and oaks: an eco-ethological study of a symbiosis. *Behaviour* 70: 1–116.
52. **Watt AS** (1919) On the causes of failure of natural regeneration in British oakwoods. *Journal of Ecology* 7: 173–203.
53. **Lässig R, Egli S, Odermatt O, Schönenberger W, Stöckli B, et al.** (1995) Beginn der Wiederbewaldung auf Windwurfflächen. *Schweizerische Zeitschrift für Forstwesen* 146: 893–911.
54. **Diemer M, Oetiker K, Billeter R** (2001) Abandonment alters community composition and canopy structure of Swiss calcareous fens. *Applied Vegetation Science* 4: 237–246.
55. **Frost I, Rydin H** (1997) Effects of competition, grazing and cotyledon nutrient supply on growth of *Quercus robur* seedlings. *Oikos* 79: 53–58.
56. **Kuiters AT, Slim PA** (2003) Tree colonisation of abandoned arable land after 27 years of horse-grazing: the role of bramble as a facilitator of oak wood regeneration. *Forest Ecology and Management* 181: 239–251.
57. **Engler S** (2010) Nitrogen balance of different aged fallows succeeding from abandoned mountain hay meadows in the Eifel National Park (Germany). Diploma Thesis. Aachen: RWTH Aachen University.
58. **Krämer K** (2009) Auswirkung verschiedener Faktoren auf die Grünlandsukzession der Dreiborner Hochfläche im Nationalpark Eifel: Wildschwein (*Sus scrofa*), Nutzung (Wiese/Weide), Randeffekte und Nachbarschaftsbeziehungen, Wegebau [Forschungspraktikum (unveröffentlicht)]. Aachen: Institute for Environmental Research, RWTH Aachen University.
59. **Krämer K** (2011) Succession of *Cytisus scoparius* shrubberies on former grassland areas in the Eifel National Park: field study and model evaluation. Diploma Thesis. Aachen: Institute for Environmental Research, RWTH Aachen University.
60. **Heilburg I** (2010) Development of diversity and species composition in different seral stages of mountain hay meadows in the Eifel National Park after abandonment on the basis of vegetation, carabids and spiders. Diploma Thesis. Aachen: RWTH Aachen University.
61. **Lennartz G, Preuß T, Fürste A, Theißen B, Toschki A, et al.** (2006) Abschlussbericht "Modellierung von Landschaftsentwicklungszenarien für die Managementzone im Nationalpark Eifel unter Berücksichtigung verschiedener Managementvarianten einschließlich spezieller Untersuchungen der Heuschrecken, Tagfalter und Vögel sowie der Ableitung von Monitoringparametern für die Offenlandentwicklung", Lehrstuhl für Umweltbiologie und -chemodynamik der Rheinisch Westfälischen Technischen Hochschule Aachen und Forschungsinstitut für Ökosystemanalyse und -bewertung e.V. (gaiac) im Auftrag der Landesanstalt für Ökologie, Bodenordnung und Forsten Nordrhein-Westfalen. Aachen.
62. **Tischler B** (2006) GIS-gestützte Analyse einzelner Aspekte der Landschafts – und landschaftsökologischen Entwicklung auf dem Truppenübungsplatz Vogelsang des Nationalparks Eifel [Magisterarbeit]: RWTH Aachen University.
63. **Rammig A, Bebi P, Bugmann H, Fahse L** (2007) Adapting a growth equation to model tree regeneration in mountain forests. *European Journal of Forest Research* 126: 49–57.
64. **Rammig A, Fahse L, Bugmann H, Bebi P** (2006) Forest regeneration after disturbance: a modelling study for the Swiss Alps. *Forest Ecology and Management* 222: 123–136.
65. **Ministerium für Ernährung und ländlichen Raum Baden-Württemberg** (2001) Schätzhilfen, Bearbeitung durch die Forstliche Versuchs- und Forschungsanstalt Baden-Württemberg.
66. **Nothdurft A** (2007) Ein nichtlineares, hierarchisches und gemischtes Modell für das Baum-Höhenwachstum der Fichte (*Picea abies* (L.) Karst.) in Baden-Württemberg. PhD Thesis. Göttingen: Georg-August-Universität Göttingen.
67. **Prevosto B, Robert A, Coquillard P** (2004) Development of *Cytisus scoparius* L. at stand and individual level in a mid-elevation mountain of the French Massif Central. *Acta Oecologica-International Journal of Ecology* 25: 73–81.
68. **Pretzsch H** (2001) Modellierung des Waldwachstums. Berlin: Blackwell Wissenschafts-Verlag. 341 p.
69. **Van Wersch C** (2010) Impact of the herbaceous layer on the succession of grassland fallows in the Eifel National Park. Bachelor Thesis. Aachen.: RWTH Aachen University.

70. **Kramer K, Groen TA, van Wieren SE** (2003) The interacting effects of ungulates and fire on forest dynamics: an analysis using the model FORSPACE. *Forest Ecology and Management* 181: 205–222.
71. **Schulte J** (1998) *Der Jäger: Lehrbuch für die Jägerprüfung*. Stuttgart: Ulmer. 560 p.
72. **Gebert C, Verheyden-Tixier H** (2001) Variations of diet composition of red deer (*Cervus elaphus L.*) in Europe. *Mammal Review* 31: 189–201.
73. **Kalén C, Bergquist J** (2004) Forage availability for moose of young silver birch and Scots pine. *Forest Ecology and Management* 187: 149–158.
74. **Renaud PC, Verheyden-Tixier H, Dumont B** (2003) Damage to saplings by red deer (*Cervus elaphus*): effect of foliage height and structure. *Forest Ecology and Management* 181: 31–37.
75. **Pott R, Hüppe J** (1991) *Die Hudelandschaften Nordwestdeutschlands*. Münster., 313 p.
76. **Weber HE** (2008) *Gebüsche, Hecken, Krautsäume*; Pott R, editor. Stuttgart: Eugen Ulmer. 256 p.
77. **Bakker ES, Olf H, Vandenberghe C, De Maeyer K, Smit R, et al.** (2004) Ecological anachronisms in the recruitment of temperate light-demanding tree species in wooded pastures. *Journal of Applied Ecology* 41: 571–582.
78. **Olf H, Vera FWM, Bokdam J, Bakker ES, Gleichman JM, et al.** (1999) Shifting mosaics in grazed woodlands driven by the alternation of plant facilitation and competition. *Plant Biology* 1: 127–137.
79. **Odom DIS, Cacho OJ, Sinden JA, Griffith GR** (2003) Policies for the management of weeds in natural ecosystems: the case of scotch broom (*Cytisus scoparius, L.*) in an Australian national park. *Ecological Economics* 44: 119–135.
80. **Paynter Q, Downey PO, Sheppard AW** (2003) Age structure and growth of the woody legume weed *Cytisus scoparius* in native and exotic habitats: implications for control. *Journal of Applied Ecology* 40: 470–480.
81. **Lieffers VI, Macdonald SE, Hogg EH** (1993) Ecology of and control strategies for *Calamagrostis-Canadensis* in boreal forest sites. *Canadian Journal of Forest Research – Revue Canadienne De Recherche Forestiere* 23: 2070–2077.
82. **Kochy M, Wilson SD** (2000) Competitive effects of shrubs and grasses in prairie. *Oikos* 91: 385–395.
83. **Van Auken OW** (2000) Shrub invasions of North American semiarid grasslands. *Annual Review of Ecology and Systematics* 31: 197–215.
84. **Jarvis PG** (1964) Interference by *Deschampsia flexuosa (L.) Trin.* *Oikos* 15: 56–78.
85. **Manzano P, Malo JE, Peco B** (2005) Sheep gut passage and survival of Mediterranean shrub seeds. *Seed Science Research* 15: 21–28.
86. **Holst PJ, Allan CJ, Campbell MH, Gilmour AR** (2004) Grazing of pasture weeds by goats and sheep. 2. Scotch broom (*Cytisus scoparius L.*). *Australian Journal of Experimental Agriculture* 44: 553–557.
87. **Paynter Q, Fowler SV, Memmott J, Shaw RH, Sheppard AW** (2000) Determinants of broom (*Cytisus scoparius (L.) Link*) abundance in Europe. *Plant Protection Quarterly* 15: 149–155.
88. **Waloff N** (1968) Studies on the insect fauna on scotch broom. In: Cragg JB, editor. *Advances in ecological research*. London: Academic Press.
89. **Gill RMA** (1992) A review of damage by mammals in north temperate forests: 1. Deer. *Forestry* 65: 145–169.
90. **Reif A, Gärtner S** (2007) Die natürliche Verjüngung der laubabwerfenden Eichenarten Stieleiche (*Quercus robur L.*) und Traubeneiche (*Quercus petraea Liebl.*) - eine Literaturstudie mit besonderer Berücksichtigung der Waldweide. *Waldoekologie online* 5: 79–116.
91. **Petrak M, Steubing L** (1985) Inhaltsstoffe und Beäusungsintensität ausgewählter Nahrungspflanzen des Rothirsches (*Cervus elaphus Linné, 1758*) in der Eifel. *Zeitschrift für Jagdwissenschaft* 31: 73–82.
92. **Palmer SCF, Mitchell RJ, Truscott AM, Welch D** (2004) Regeneration failure in Atlantic oakwoods: the roles of ungulate grazing and invertebrates. *Forest Ecology and Management* 192: 251–265.
93. **Canham CD, McAninch JB, Wood DM** (1994) Effects of the frequency, timing, and intensity of simulated browsing on growth and mortality of tree seedlings. *Canadian Journal of Forest Research – Revue Canadienne De Recherche Forestiere* 24: 817–825.

94. **Eiberle K** (1989) Über den Einfluss des Wildverbisses auf die Mortalität von jungen Waldbäumen in der oberen Montanstufe. *Schweizerische Zeitschrift für Forstwesen* 140: 1031–1042.
95. **Vandenberghe C, Frelechoux F, Buttler A** (2008) The influence of competition from herbaceous vegetation and shade on simulated browsing tolerance of coniferous and deciduous saplings. *Oikos* 117: 415–423.
96. **Harmer R** (2001) The effect of plant competition and simulated summer browsing by deer on tree regeneration. *Journal of Applied Ecology* 38: 1094–1103.
97. **Bugmann H** (2005) Langfristige Walddynamik unter Huftiereinfluss: Was leisten dynamische Modelle? *Forum für Wissen*: 41–50.
98. **Didion M, Kupferschmid AD, Bugmann H** (2009) Long-term effects of ungulate browsing on forest composition and structure. *Forest Ecology and Management* 258: S44–S55.
99. **Augustine DJ, McNaughton SJ** (1998) Ungulate effects on the functional species composition of plant communities: herbivore selectivity and plant tolerance. *The Journal of Wildlife Management* 62: 1165–1183.
100. **Petrak M, Pape J, Schröder K-H, Vollmer M, Dejoze C, et al.** (2006) Lebensraumnutzung des Rotwildes auf dem Truppenübungsplatz Vogelsang: Schlussfolgerungen für die Besucherlenkung im Nationalpark Eifel. *Decheniana (Bonn)* 159: 123–131.
101. **Petrak M, Pape J, Schröder K-H, Vollmer M, Dejoze C, et al.** Habitat use of red deer in the military training area of Vogelsang: conclusions for a visitor management strategy in the Eifel NationalPark; 2005; Hannover, Germany. pp. 435–437.
102. **Grimm V, Revilla E, Berger U, Jeltsch F, Mooij WM, et al.** (2005) Pattern-oriented modeling of agent-based complex systems: lessons from ecology. *Science* 310: 987–991.
103. **Paynter Q, Fowler SV, Memmott J, Sheppard AW** (1998) Factors affecting the establishment of *Cytisus scoparius* in southern France: implications for managing both native and exotic populations. *Journal of Applied Ecology* 35: 582–595.
104. **Turner JH** (1933) The Viability of Seeds. *Bulletin of Miscellaneous Information (Royal Gardens, Kew)* 1933: 257–269.
105. **Harmer R, Peterken G, Kerr G, Poulton P** (2001) Vegetation changes during 100 years of development of two secondary woodlands on abandoned arable land. *Biological Conservation* 101: 291–304.
106. **Kahmen S, Poschlod P** (2004) Plant functional trait responses to grassland succession over 25 years. *Journal of Vegetation Science* 15: 21–32.
107. **Schupp EW** (1995) Seed-seedling conflicts, habitat choice, and patterns of plant recruitment. *American Journal of Botany* 82: 399–409.
108. **Smit C, Ruifrok JL** (2011) From protege to nurse plant: establishment of thorny shrubs in grazed temperate woodlands. *Journal of Vegetation Science* 22: 377–386.
109. **Callaway RM** (1995) Positive interactions among plants. *Botanical Review* 61: 306–349.
110. **Barbosa P, Hines J, Kaplan I, Martinson H, Szczepaniec A, et al.** (2009) Associational resistance and associational susceptibility: having right or wrong neighbors. *Annual Review of Ecology Evolution and Systematics* 40: 1–20.
111. **Hejcman M, Pavlu V, Gaisler J** (2004) Vegetation structure under unmanaged, grazed and cut grassland in the Giant Mountains, Czech Republic. *Grassland Science in Europe* 9: 213–215.
112. **Glavac V** (1996) *Vegetationsökologie*. Jena: Fischer Verlag. 358 p.
113. **Moog D, Poschlod P, Kahmen S, Schreiber KF** (2002) Comparison of species composition between different grassland management treatments after 25 years. *Applied Vegetation Science* 5: 99–106.
114. **Schreiber K-F, Broll G, Brauckmann H-J** (2000) *Methoden der Landschaftspflege – eine Bilanz der Bracheversuche in Baden-Württemberg*. MLR B-W 32.
115. **Kratochwil A, Schwabe A** (2001) *Ökologie der Lebensgemeinschaften*. Stuttgart: Eugen Ulmer. 756 p.
116. **Clements FE** (1936) Nature and structure of the climax. *Journal of Ecology* 24: 252–284.
117. **Wiegand T, Jeltsch F, Hanski I, Grimm V** (2003) Using pattern-oriented modeling for revealing hidden information: a key for reconciling ecological theory and application. *Oikos* 100: 209–222.

118. **Schupp EW, Chambers JC, Vander Wall SB, Gomez JM, Fuentes M** (1998) Pinon and juniper seed dispersal and seedling recruitment at woodland ecotones. *Proceedings : Shrubland Ecotones*: 66–70.
119. **Loague K, Green RE** (1991) Statistical and graphical methods for evaluating solute transport models: overview and application. *Journal of Contaminant Hydrology* 7: 51–73.
120. **Härdtle W, Ewald J, Hölzel N** (2008) *Wälder des Tieflandes und der Mittelgebirge*; Pott R, editor. Stuttgart: Eugen Ulmer. 252 p.
121. **Burschel P, Huss J** (1997) *Grundriß des Waldbaus – Ein Leitfaden für Studium und Praxis*. Berlin: Parey. 488 p.
122. **Meyer SE** (2008) *Cytisus scoparius* (L.) Link. In: Bonner FT, Karrfalt RP, editors. *Woody plant seed manual*. Washington, DC: Agriculture Dept., Forest Service. pp. 466–467.
123. **Tarrega R, Calvo L, Trabaud L** (1992) Effect of high temperatures on seed-germination of 2 woody leguminosae. *Vegetatio* 102: 139–147.
124. **Kunstler G, Thuiller W, Curt T, Bouchaud M, Jouvie R, et al.** (2007) *Fagus sylvatica* L. recruitment across a fragmented Mediterranean landscape: importance of long distance effective dispersal, abiotic conditions and biotic interactions. *Diversity and Distributions* 13: 799–807.
125. **Bergquist J, Löf M, Örlander G** (2009) Effects of roe deer browsing and site preparation on performance of planted broadleaved and conifer seedlings when using temporary fences. *Scandinavian Journal of Forest Research* 24: 308–317.
126. **Miller GR, Cummins RP** (1998) Browsing by red deer on naturally regenerated birch and juniper saplings on wintering ground at Glen Feshie. *Scottish Forestry* 52: 138–145.
127. **Bossard CC** (1990) Tracing of ant-dispersed seeds: a new technique. *Ecology* 71: 2370–2371.
128. **Smith JMB, Harlen RL** (1991) Preliminary observations on the seed dynamics of broom *Cytisus scoparius* at Barrington Tops New South Wales. *Plant Protection Quarterly* 6: 73–78.
129. **Schmidt W** (2004) Äsungskapazität des Waldes in Abhängigkeit von Standort und Überschirmung im Vergleich zu Grünlandflächen. Tagung für die Jägerschaft, Ernährung des Rot-, Reh- und Gamswildes – Grundlagen, Probleme und Lösungsansätze, 16 und 17 Februar 2004. A-8952 Irdning: Bundesanstalt für alpenländische Landwirtschaft Gumpenstein.