

# **Plaque burden improves the detection of ischemic CAD over stenosis from coronary computed tomography angiography**

## **The International Journal of Cardiovascular Imaging**

Tanja Kero<sup>1\*</sup>, Sarah Bär<sup>2,3\*</sup>, Antti Saraste<sup>2,4</sup>, Riku Klén<sup>2</sup>, Jeroen J. Bax<sup>5</sup>, Juhani Knuuti<sup>2,6</sup>, Teemu Maaniitty<sup>2,6</sup>

<sup>1</sup>Nuclear Medicine & PET, Department of Surgical Sciences, Uppsala University, Uppsala, Sweden;

<sup>2</sup>Turku PET Centre, Turku University Hospital, University of Turku, Turku, Finland;

<sup>3</sup>Department of Cardiology, Bern University Hospital Inselspital, Bern, Switzerland;

<sup>4</sup>Heart Center, Turku University Hospital, University of Turku, Turku, Finland.

<sup>5</sup>Department of Cardiology, Leiden University Medical Center, Leiden, The Netherlands;

<sup>6</sup>Department of Clinical Physiology, Nuclear Medicine, and PET, Turku University Hospital, Turku, Finland;

\*The authors contributed equally to this work.

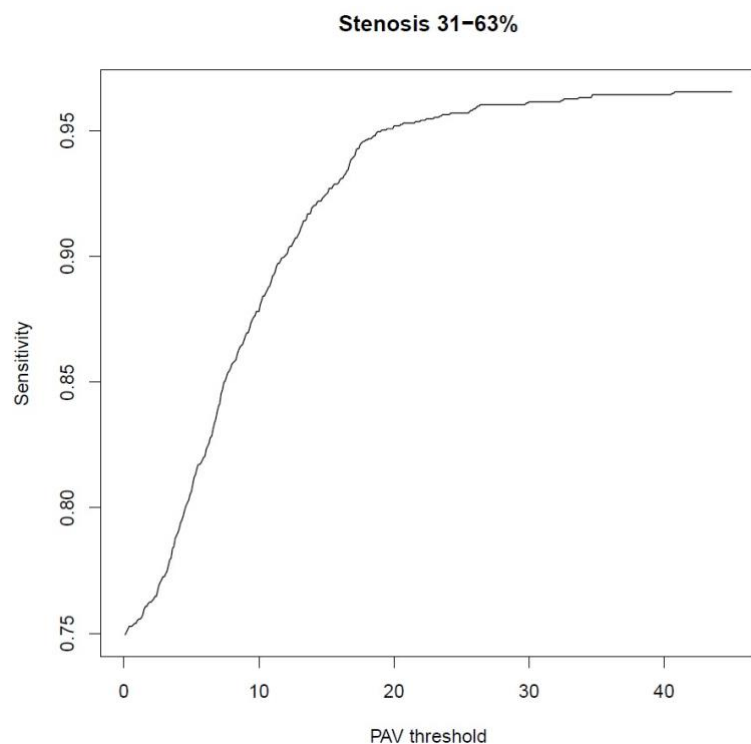
### **Address for correspondence:**

Dr Tanja Kero

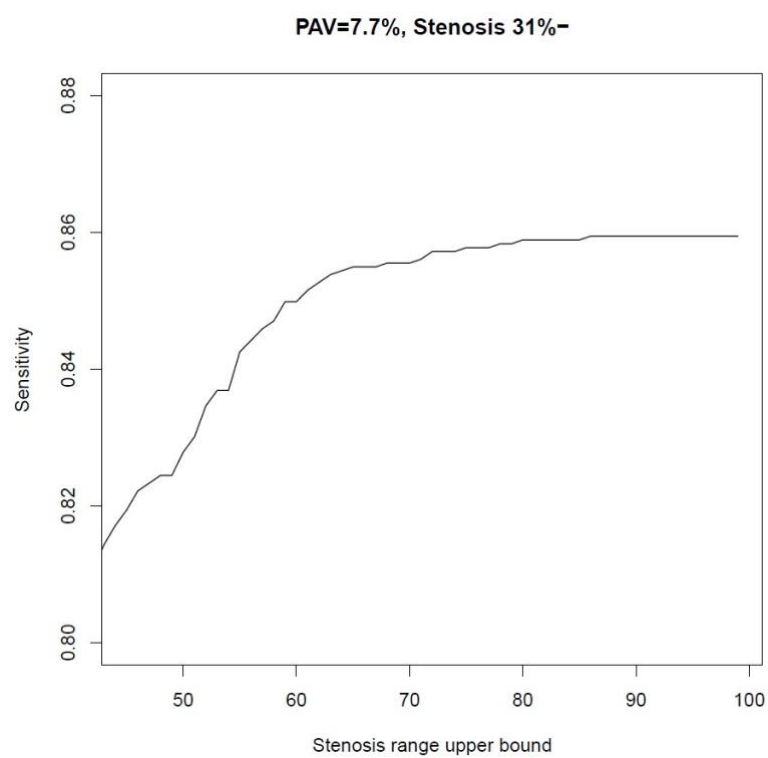
E-mail: [tanja.kero@uu.se](mailto:tanja.kero@uu.se)

**Supplemental Figure 1 a-g. Results from grid search showing the sensitivity and specificity of different PAV thresholds, stenosis range upper bounds and stenosis range lower bounds.**

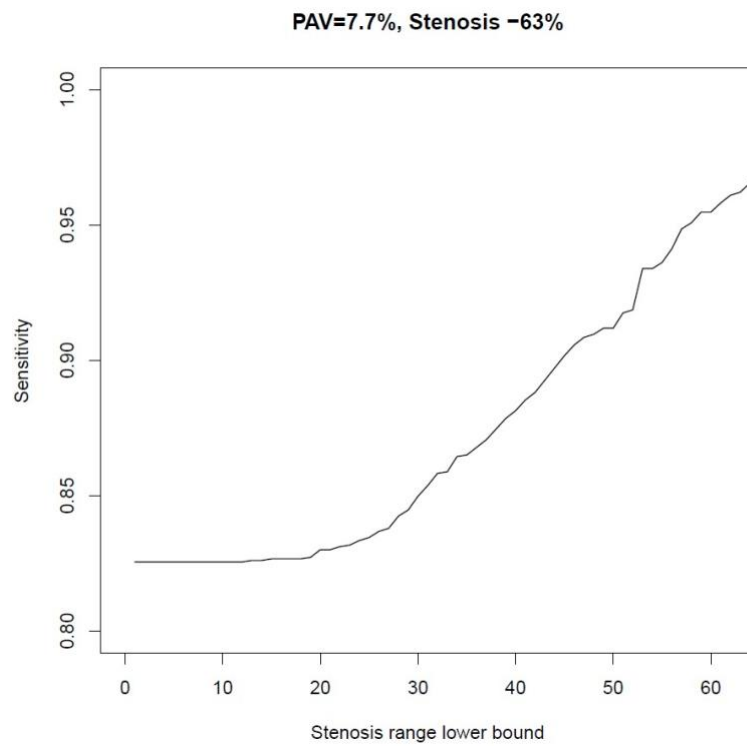
PAV = percent atheroma volume.



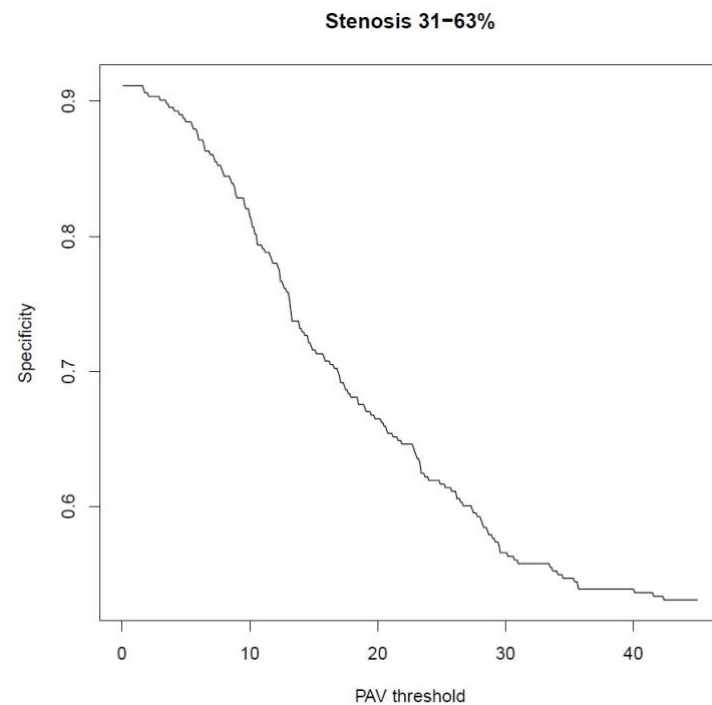
**Supplemental Figure 1a.**



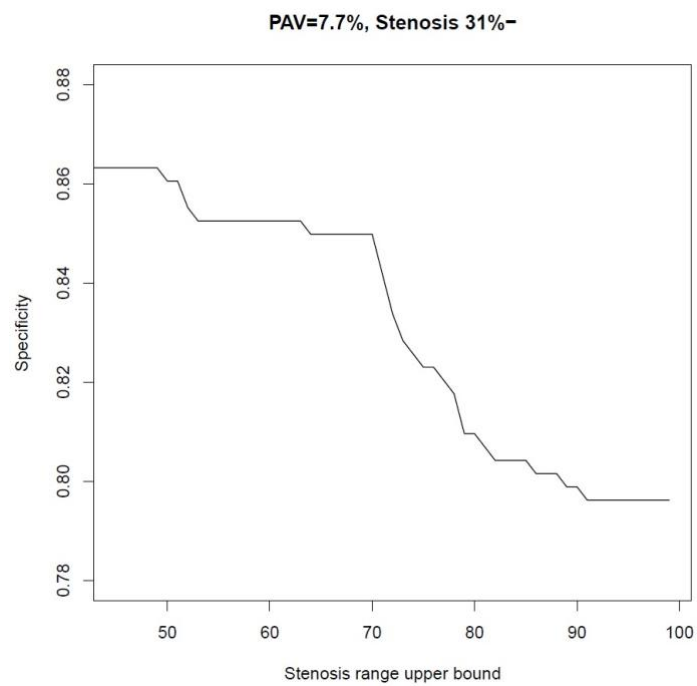
**Supplemental Figure 1b.**



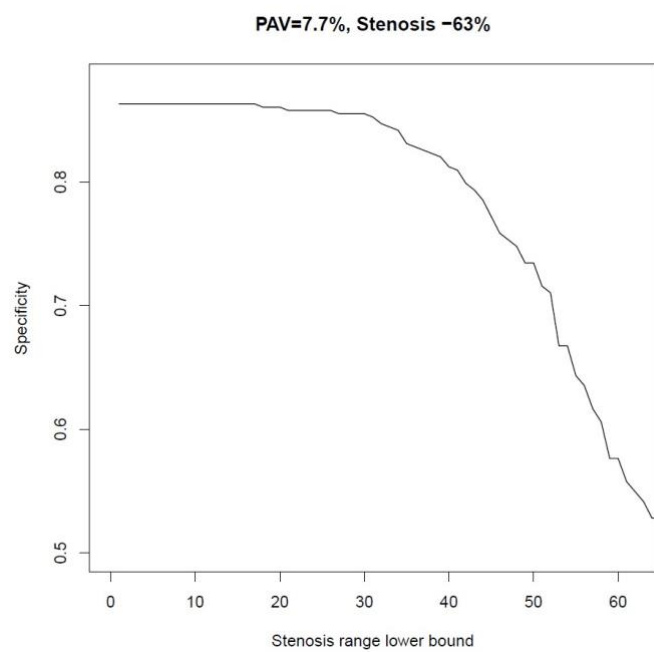
**Supplemental Figure 1c.**



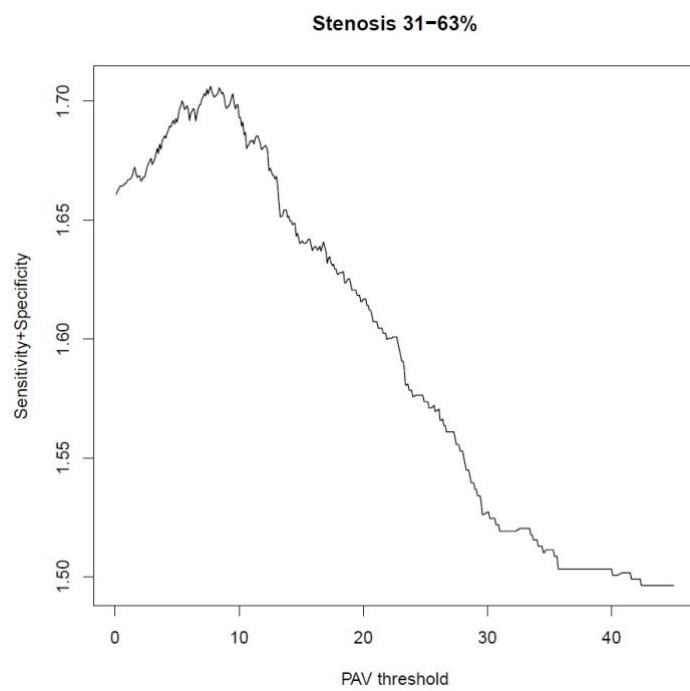
**Supplemental Figure 1d.**



**Supplemental Figure 1e.**



**Supplemental Figure 1f.**



**Supplemental Figure 1g.**

