



OPEN

Designing of promiscuous inhibitors against pancreatic cancer cell lines

Rahul Kumar^{1*}, Kumardeep Chaudhary^{1*}, Deepak Singla^{1,2†}, Ankur Gautam¹ & Gajendra P. S. Raghava¹¹Bioinformatics Centre, CSIR-Institute of Microbial Technology, Chandigarh-160036, India, ²Centre for Microbial Biotechnology, Panjab University, Chandigarh-160014.

SUBJECT AREAS:

DRUG DEVELOPMENT
VIRTUAL SCREENING
DATA PROCESSING
COMPUTATIONAL MODELSReceived
22 January 2014Accepted
17 March 2014Published
14 April 2014Correspondence and
requests for materials
should be addressed to
G.P.S.R. (raghava@
imtech.res.in)* These authors
contributed equally to
this work.† Current Address:
National Institute of
Pathology, Safdarjang
Hospital Complex,
New Delhi-110029.

Pancreatic cancer remains the most devastating disease with worst prognosis. There is a pressing need to accelerate the drug discovery process to identify new effective drug candidates against pancreatic cancer. We have developed QSAR models for predicting promiscuous inhibitors using the pharmacological data. Our models achieved maximum Pearson correlation coefficient of 0.86, when evaluated on 10-fold cross-validation. Our models have also successfully validated the drug-to-oncogene relationship and further we used these models to screen FDA approved drugs and tested them *in vitro*. We have integrated these models in a webserver named as DiPCell, which will be useful for screening and designing novel promiscuous drug molecules. We have also identified the most and least effective drugs for pancreatic cancer cell lines. On the other side, we have identified resistant pancreatic cancer cell lines, which need investigative scanner on them to put light on resistant mechanism in pancreatic cancer.

Pancreatic cancer (PCa) remains the fourth leading cause of cancer-related deaths¹, and it is one of the most lethal malignant tumors. An overall 5-year survival rate of less than 6% and 45,220 new cases were reported in United States alone¹. The mortality rate of PCa is almost equal to the incidence rate, which demonstrates the aggressiveness and lethal nature of this disease. The contributing factors for this high mortality rate are lack of screening tests for early diagnosis and development of drug resistance in tumor cells²⁻⁵. Over the years, considerable progress has been made in the fight with this disease, and few drugs have been developed to treat this deadly disease. Although gemcitabine is the standard drug of choice⁶⁻¹⁰; fluorouracil, leucovorin and irinotecan are also used as combination chemotherapy, but existing anti-cancer drugs or therapies are unable to save lives of patients suffering from PCa. One of the major reasons for the inefficiency of existing anti-cancer drugs is acquired drug resistance that is developed due to genetic alterations in various drug targets¹¹⁻¹³. There is an urgent need to improve pancreatic cancer drug arsenal to combat drug resistance problem and for effective treatment. High-throughput screening of therapeutic molecules from a large pool of chemical compounds is the most suitable way to identify novel anti-cancer molecules. However, it is time and labor consuming effort. *In silico* methods, which can predict novel inhibitors against pancreatic cancer, will be an attractive alternative approach.

Recently, considerable attention has been paid towards pancreatic cancer drug discovery. In this context, Garnett *et al.* have screened 132 anti-cancer drugs on 714 cancer cell lines¹⁴ and reported 78070 logIC₅₀ values for different drug and cell line combinations. In another study, Rechar *et al.* have demonstrated that cancer cell lines share the same features (*i.e.* copy number variation, expression abnormality) as the primary tumors¹⁵. In 2012, Barretina *et al.* clearly demonstrated the correlation between genomic status of primary tumors and cancer cell lines of different lineages¹⁶. These studies support the extrapolation of cell line studies to primary tumors and further to clinics. Keeping all these facts into consideration, in the present study, we have developed quantitative structure activity relationship (QSAR) models to predict promiscuous inhibitors against 16 pancreatic cancer cell lines. The pharmacological screening data generated in Genomics of Drug Sensitivity in Cancer (one of the projects in COSMIC) was used to develop models¹⁴. QSAR modeling using high-throughput screening data is a powerful technique, which enables the construction of predictive models. These models can be utilized for the *in silico* screening of libraries of billions of diverse molecules prior to their experimental validation. Here, we have not considered the biological targets of drugs and just tried to demonstrate the potential of chemical descriptors and QSAR to predict anti-cancer activity of unknown molecules. Our QSAR models will complement the pancreatic cancer research by helping in identification of novel inhibitors against pancreatic cancer cell lines. For the advancement of the scientific community, we have integrated these models on a webserver, DiPCell, which is freely accessible at <http://crdd.osdd.net/raghava/dipcell/>.



Supp. Table ST2). Behavior of these two cell lines can be subjected to investigate the mechanism of drug resistance in pancreatic cancer. On the other hand, KP-4 and MIA-PaCa-2 were found to be the most sensitive among all the pancreatic cancer cell lines (Figure 2C & 2D, Supp. Figure S3C & D and Supp. Table ST2).

Performance of QSAR models. In order to identify the most effective features or descriptors of anticancer drugs, we computed the correlation between chemical features of anti-cancer drugs and their inhibitory activity. We next asked, whether these chemical features have some predictive power to predict anticancer activity of an unknown molecule. To address this issue, we have used the most comprehensive pharmacological screening dataset till now from the GDSC project to develop QSAR models (Figure 3). Performance of QSAR models was evaluated in terms of Pearson correlation coefficient (R), coefficient of determination (R^2) and root mean square error (RMSE). Performance of QSAR models was evaluated at two different levels of descriptor selection. At first level, descriptors were selected using CfsSubsetEval module implemented in Weka. At this level, we selected as minimum as 38 descriptors for SW1990 cell line and maximum of 136 descriptors for MZ1-PC cell line (Table 1). We have achieved maximum correlation (R) of 0.89 in case of YAPC cell line with R^2 and RMSE values of 0.78 and 1.24 respectively, and minimum correlation was 0.64 in case of PSN1 cell line. Although we achieved a decent correlation for most of the cell lines at this level, but the ratio of number of descriptors and

number of drugs is around 1:2 or more (Table 1). For the development of robust QSAR models, this ratio should be around 1:4. So, we further reduced descriptors as much as possible by applying F-stepping technique, which removes each descriptor one by one. At this level, we have achieved maximum correlation (R) of 0.86 in case of MIA-PaCa-2 and YAPC cell lines as shown in Table 1 and minimum correlation was 0.63 in case of PSN1 cell line and maintained the ratio of number of descriptors and number of drugs to 1:4. Figure 4 demonstrates the scatter plot between observed and predicted $\log IC_{50}$ (μM) for different pancreatic cancer cell lines.

Analysis of descriptors. We have analysed all the descriptors used in developing 16 QSAR models and observed that in total 212 descriptors were sufficient enough to predict the effect of anti-cancer drugs on 16 pancreatic cancer cell lines (Figure 5 and Table ST3). While analyzing the properties of these descriptors, we observed that 96% of all the descriptors were binary fingerprints and rest 4% were 2D and 3D descriptors (Figure 5). As shown in Figure 5, KRFPs are the most contributing descriptors (22%) followed by the CDK fingerprints (21%). Further analysis suggested that extended fingerprint 153 (ExtFP153) (describes the ring feature in a drug molecule) and fingerprint (FP1013) showed a negative correlation for 9 and 11 pancreatic cancer cell lines respectively (Supp. Figure S4 and Supp. Table ST4). However, the graph fingerprint 40 (GraphFP40) showed a positive correlation with

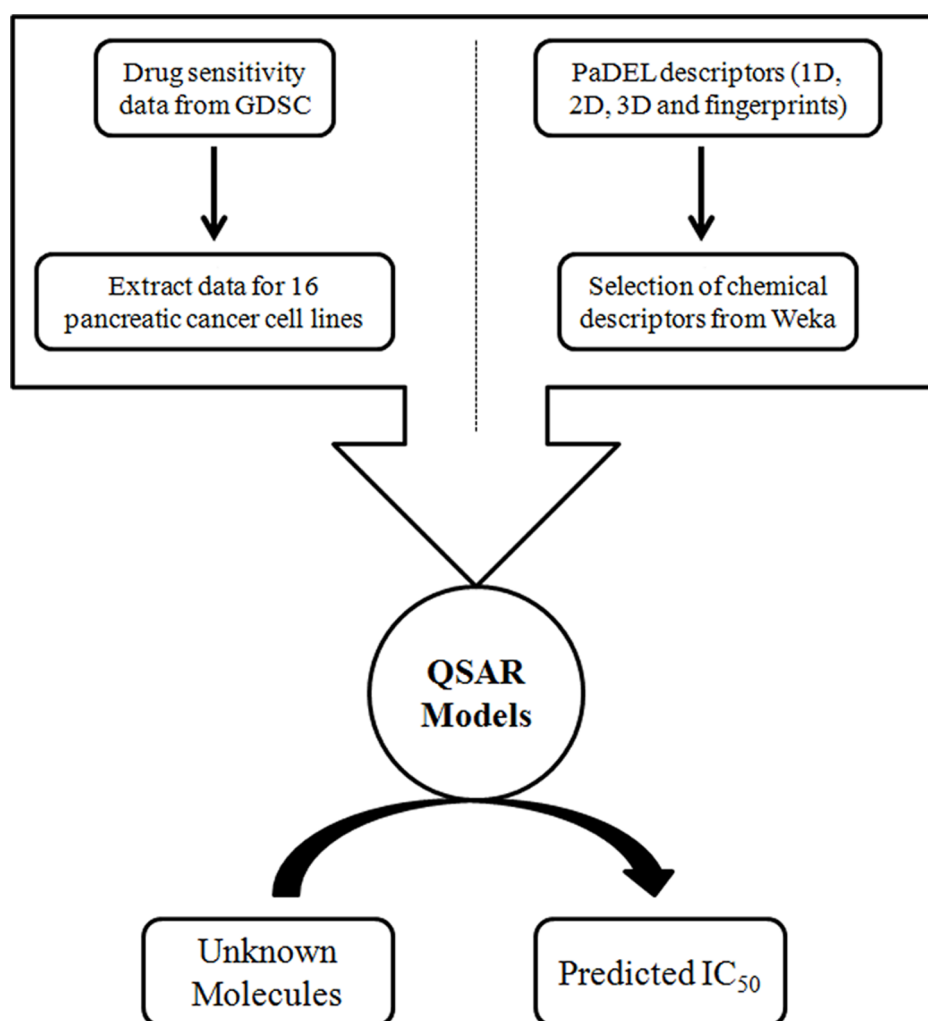


Figure 3 | Schematic diagram demonstrating work flow of DiPCell.



Table 1 | Pearson correlation and root mean square error values obtained for each pancreatic cell line by their respective QSAR models

S. No.	Cell Line	ND*	D ₁	R	R ²	RMSE	D ₂	R	R ²	RMSE
1.	AsPC-1	92	45	0.84	0.70	1.6	23	0.81	0.66	1.78
2.	BxPC-3	92	47	0.82	0.67	1.82	19	0.82	0.67	1.83
3.	CAPAN-1	96	42	0.83	0.69	1.61	21	0.84	0.71	1.58
4.	Capan-2	90	54	0.86	0.73	1.47	22	0.82	0.67	1.63
5.	HPAF-II	95	42	0.86	0.74	1.45	22	0.85	0.73	1.48
6.	HuP-T3	96	54	0.85	0.73	1.57	22	0.84	0.71	1.63
7.	HuP-T4	92	41	0.79	0.61	2.00	24	0.83	0.69	1.81
8.	KP-4	88	62	0.82	0.68	1.94	22	0.82	0.67	2.04
9.	MIA-PaCa-2	96	45	0.85	0.71	1.81	23	0.86	0.73	1.76
10.	MZ1-PC	132	136	0.79	0.61	1.94	29	0.73	0.53	2.16
11.	PANC-03-27	91	44	0.8	0.64	2.00	20	0.82	0.67	1.91
12.	PANC-08-13	92	50	0.81	0.65	1.75	22	0.82	0.68	1.74
13.	PANC-10-05	95	41	0.81	0.65	1.92	24	0.85	0.73	1.71
14.	PSN1	129	116	0.64	0.42	2.68	31	0.63	0.39	2.81
15.	SW1990	94	38	0.77	0.56	1.89	23	0.80	0.63	1.83
16.	YAPC	86	65	0.89	0.79	1.24	21	0.86	0.74	1.45

*ND: Number of drugs used to develop QSAR models; D₁: Number of descriptors selected from the CfsSubsetEval algorithm; D₂: Number of descriptor selected from CfsSubsetEval followed by F-stepping; R: Pearson Correlation; RMSE: Root Mean Square Error.

drug activity (Supp. Figure S4 and Table ST5). Relative positive charge descriptor (RPGC) is the only single 3D descriptor which showed a high positive correlation with the drug activity in Capan-2 cell line (Figure 6). It suggests that relative positive charge plays some role in anti-cancer activity of drugs, and it would be recommendable to have more relative positive charge for better antiproliferative activity. On the other hand, PubChem fingerprint, PubchemFP337, which corresponds to substructure C(∼C)(∼C)(∼C)(∼O) showed a negative correlation with the drug activity (Supp. Figure S4 and S5) (‘∼’ depicts irrespective of bond order). Similarly, activity of anti-cancer drugs for the other cell lines was correlated with different types of descriptors, suggesting that these descriptors play crucial roles in the functioning of these anti-cancer drugs (Supp. Figure S4).

Validation of drug-to-oncogene relation. From these QSAR models, we tried to recapitulate the drug-to-oncogene associations, which were suggested by the experimental data¹⁴. For instance, loss of *SMAD4* was associated with sensitivity to EGFR-family inhibitor BIBW2992¹⁴. First, we divided the 16 pancreatic cancer cell lines into two classes, first one, which is mutated for *SMAD4*, and second, which is wild type for *SMAD4*. We developed different QSAR models for wild type and mutated cell lines (BIBW2992 was not used in the training of these models to avoid any biases). Then, we predicted the logIC₅₀ value of BIBW2992 (as an independent molecule) using our QSAR models for each cell line. We got the same association from the predicted logIC₅₀ values as earlier suggested by the experimental data (Figure 7).

Screening of FDA approved drugs. Drug repositioning is the well established concept in the field of drug designing and pharmacoinformatics^{22,23}. In 2012, Debnath and coworkers carried out the high throughput screening of FDA approved drugs against the intestinal parasite *Entamoeba histolytica*, which is the causative agent of human amebiasis²⁴. They found auranofin, which is a prescribed drug in rheumatoid arthritis is ten times more potent than metronidazole (drug of choice for human amebiasis). This finding and many other earlier such reports advocated the potential of FDA approved drugs for their unknown therapeutic potential in other diseases. To capitalize these findings, we have screened FDA approved drugs by our *in silico* QSAR models and sorted them according to their predicted IC₅₀ values. We got interesting result, out of top 10 FDA approved drugs (Table 2), 7 are well known anticancer drugs, which uphold the utility of our

QSAR models for screening anticancer activity. Remaining 3 drugs, have yet to be characterized for their anticancer activity. Whole rank wise list of FDA approved drugs is available in supplementary material (Table ST5).

Experimental Validation. In the list of top ten predicted anticancer drugs, three drugs (pimicrolimus, tacrolimus and dirithromycin) were not known previously for their anticancer activity (Table 2). Therefore, we analysed *in vitro* antiproliferative effect of these three drugs on two pancreatic cancer cell lines, MIA-PaCa-2 and PANC-1. We have taken paclitaxel as a positive control for the anticancer activity and the same was also present in our predicted list of anticancer drugs. As predicted, all three drugs have shown anticancer activity on both the cell lines. Tacrolimus was the most effective drug at higher concentration (above 50 μM) as it has shown ∼100% cytotoxicity at 100 μM (Figure 8a and 8b) on both the cell lines. Pimicrolimus has shown more than 60% cytotoxicity at 100 μM on both the cell lines (Figure 8a and 8b). These results shows that the tacrolimus have prominent anticancer activity as compared to the other predicted drugs and paclitaxel (positive control) at higher concentration (100 μM) but found to be less effective at lower concentrations. Pimicrolimus was more effective than tacrolimus below 50 μM concentration range. On the other hand, dirithromycin was less effective even at higher concentration.

Web Implementation

As the results demonstrated that developed QSAR models are quite effective in predicting the inhibitory activity (logIC₅₀) of unknown molecules and in reproducing the drug-to-oncogene association, these QSAR models have been implemented to the user friendly webserver named as DiPCell (Figure 9), where users can predict the inhibitory activity of unknown molecules (or a whole library of chemicals) against 16 pancreatic cancer cell lines in terms of logIC₅₀ value. DiPCell includes following tools:

Draw structure. This tool allows users to draw chemical structure of their molecule using Marvin editor. At one time, user can predict drug sensitivity on a maximum of 16 pancreatic cancer cell lines. Since it is very difficult to define the cut-off logIC₅₀ value, which discriminates between sensitive and resistance cancer cell lines hence, an option of logIC₅₀ cut-off value has been provided, which will be defined by the user on the basis of their experimental criteria. After submission, DiPCell returns with logIC₅₀ values against pancreatic cancer cell lines selected by the users along with an option to

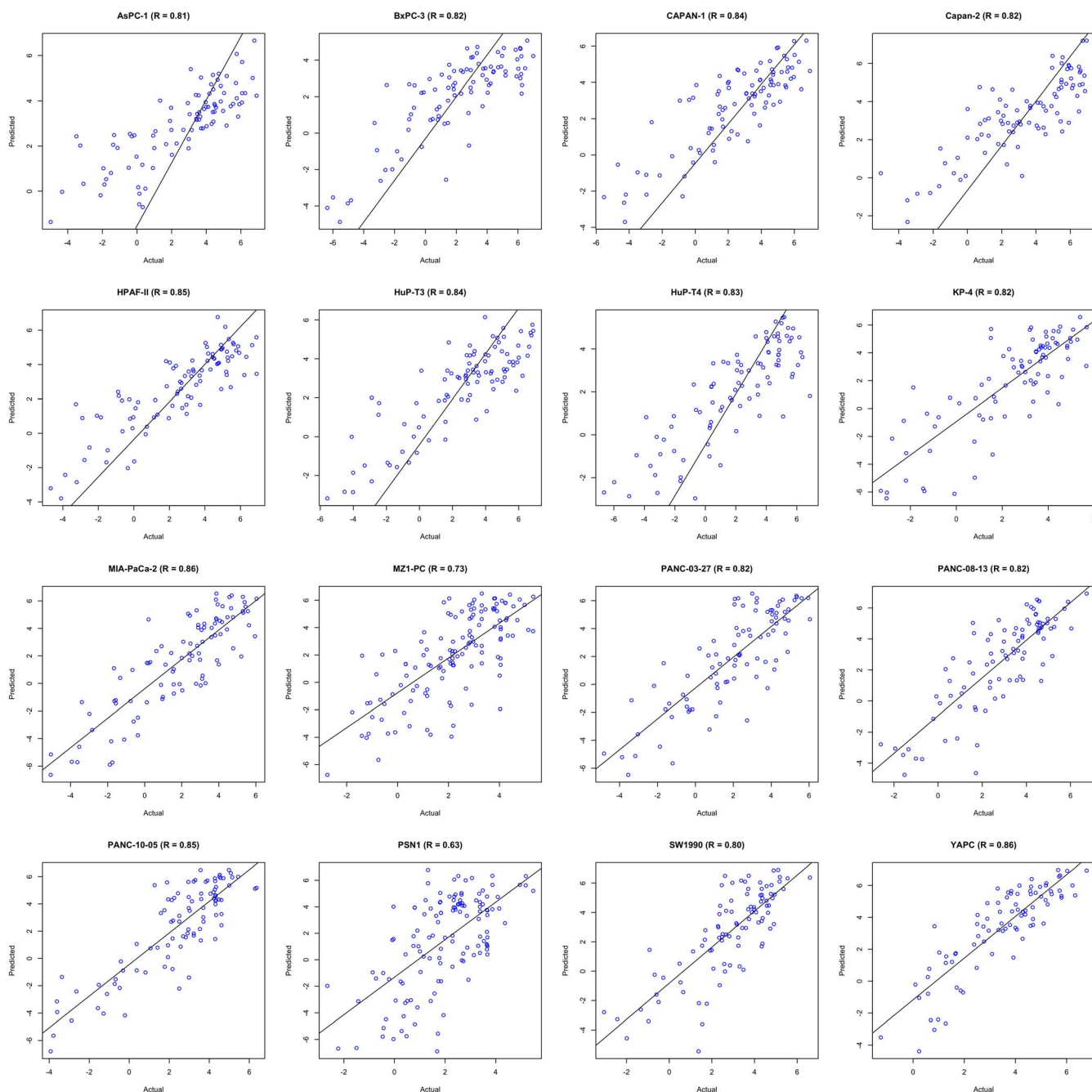


Figure 4 | Scatter plots between actual and predicted $\log IC_{50}$ values of 16 pancreatic cancer cell lines.

calculate chemical descriptors of the query molecule (Supp. Figure S6).

Batch submission. This allows users to submit more than one molecule at a time. Users have to choose the cell lines on which they want to test their query molecules along with the cut-off $\log IC_{50}$ values (Supp. Figure S7).

Design analogs. Since analogs of known drug/certain molecule may be more potent than parent molecule. Therefore, it is a common practice to identify a better molecule of a certain existing drug by structural activity relationship (SAR). In DiPCell, we have incorporated the similar kind of module, where user can design analogs and simultaneously predict their drug sensitivity on pancreatic cancer cell lines. User has to provide scaffold structures,

building blocks and linkers as input for this module (Supp. Figure S8). This webserver will be useful and can actively contribute in research on pancreatic cancer by helping in discovering the new candidate drug molecules. This web service is freely accessible at <http://crdd.osdd.net/raghava/dipcell>.

Discussion

Continuous discovery of novel inhibitors against pancreatic cancer will not only improve the current treatment but also provide more options to select suitable drugs for the right subset of patients. Identification of novel drug candidates is not as simple as it looks and the whole process usually takes a long time (~15–20 years) to funnel out a single drug molecule out of billions of compounds. On the other hand, computational screening of billions of molecules to identify/predict drug like compounds based on certain features of

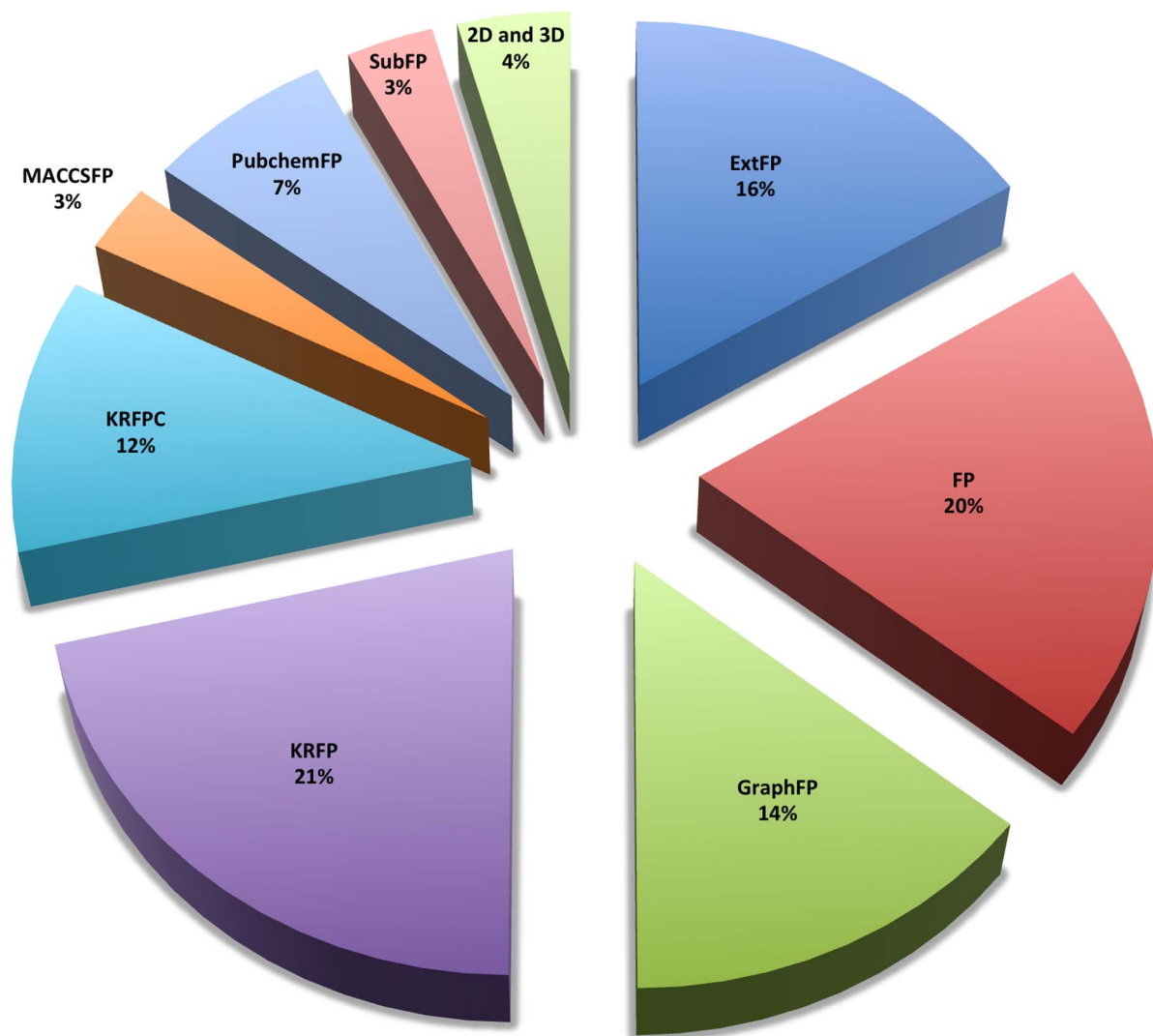


Figure 5 | Different classes of descriptors associated with inhibitory activity prediction.

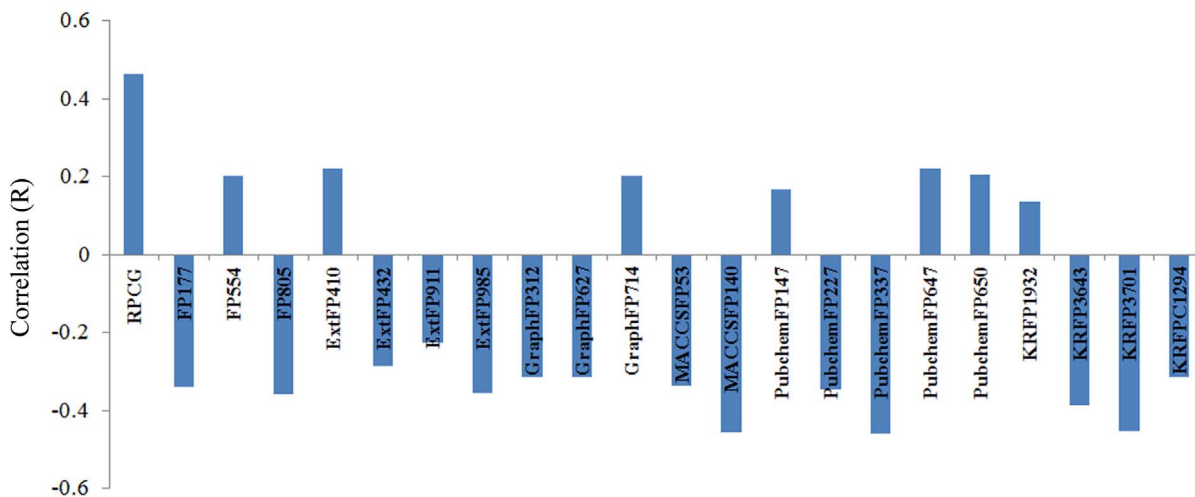


Figure 6 | Correlation of descriptors (R) with the drug activity in Capan-2 cell line.

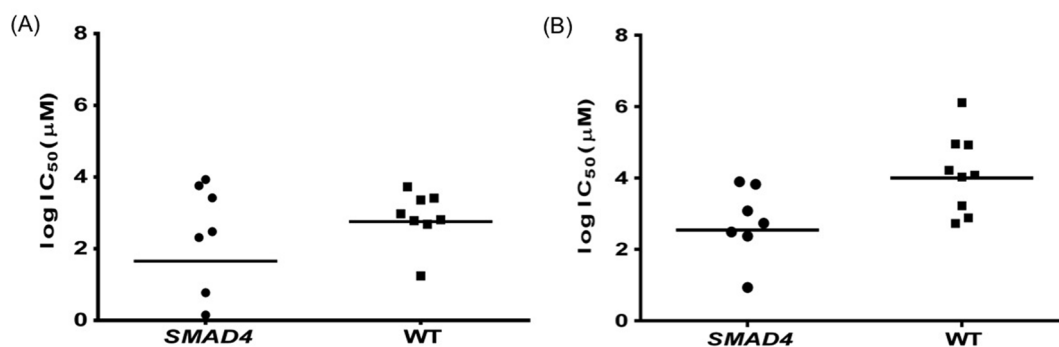


Figure 7 | Scatter plot showing (A) experimental and (B) predicted (obtained by QSAR models) LogIC_{50} values for *SMAD4* mutated and wild type pancreatic cancer cell lines. Each dot represents the cell line and horizontal line is the geometric mean. In panel (A), 15 cell lines is presented instead of 16 because for one cell line logIC_{50} is having a negative value.

well known drug molecules seems to be a potential approach. In the present study, we have developed QSAR models for prediction of inhibitors against pancreatic cancer cell lines to enhance and complement the drug development process. Our results demonstrated that chemical features of drug molecules can be correlated to their activity and thus, can be used to predict activity of unknown molecules. Availability of high throughput drug screening data made it possible to develop such efficient models, and we anticipate that as more and more screening data will be available, the predictive power of these models will increase further. Our models were also able to recapitulate the drug-to-oncogene association, which were revealed by the experimental data. So, it would help to link up the genes as biomarker of drug sensitivity^{14,25}. As we have shown in our results, Capan-2 and YAPC cell lines were resistant against most of the anticancer drugs and earlier studies demonstrated that cancer cell lines are like a mirror image of primary tumors in terms of genomic and transcriptional abnormalities^{15,16} and moreover, the high throughput data as in our case can recapitulate the real conditions up to great extent and help in systematic identification of new anticancer drug candidates. Therefore, we can hypothesize that genomic and transcriptomic studies of these two cell lines can put some light on the drug resistance mechanism in pancreatic cancer. As suggested in the literature, it is not solely the drug, which determined its activity, rather genomics and proteomic signatures of a cell line are also substantial contributors in determining the activity^{26–29}. We are currently investigating these aspects, and in the future we will integrate these signatures with QSAR models to make them more robust and efficient.

Limitations

Recently, Quackenbush and colleague have shown an interesting comparison between pharmacological data from CCLE and CGP³⁰. They have shown that the pharmacological data between these two studies are miserably correlated (Spearman's rank correlation of 0.28). In the light of this comparative study, one can question about

the validity of our QSAR models, whether they will accurately predict the anticancer activity or not. We agree with this and certainly it would limit down the spectrum of these QSAR models. But if we carefully look, this is not the limitation of QSAR models, this is the limitation of the pharmacological data available³¹. This inadequation of the pharmacological data is also reflected in our experimental validation, where we got the anticancer activity in tacrolimus and dirithromycin, but at very high concentration (100 μM). But, we can anticipate as the quality of the data will increase, predictive power of these models will increase more and more. This study is solely based on cell line data, this is also another constraint, which further narrows down the spectrum of these models. But from somewhere at some point, we have to start and this study is just a beginning of a new arena for drug sensitivity prediction.

Methods

Pharmacological data. In this study, we have used a dataset of 132 anti-cancer drugs and their log transformed IC_{50} values against 714 cancer cell lines and this data was obtained from the GDSC Website¹⁴ (Genomics of Drug Sensitivity, <http://www.cancerrxgene.org/translation/Drug>, Date of access: 20/11/2012, published in 2012) and CancerDR database¹⁷ (CancerDR: Cancer Drug Resistance Database, <http://crdd.osdd.net/raghava/cancerdr>, Date of access: 07/12/2012, published in 2013). Among the 714 cancer cell lines, 16 were pancreatic cancer cell lines. We extracted the pharmacological screening data of these 16 pancreatic cancer cell lines. LogIC_{50} values of these drugs vary from -11 to $+13.6$. Higher logIC_{50} values are just an extrapolation of the drug-response curve, and they do not have any biological relevance. But, if we reduce this scale to a somewhat narrow range, number of drugs will reduced apparently. Accordingly to make a balance between drugs and logIC_{50} range, we restricted ourself to -7 to $+7$ scale of logIC_{50} , so that we can get optimum number of drugs to develop QSAR models and moreover, to avoid any fallacy in machine learning.

Structure of Drugs. To obtain the structure of drugs, we have downloaded the SDF file of molecules available at PubChem and for rest of the drugs, structures were drawn using PubChem editor. These 2D structures were further converted into 3D structures, and their energy was minimized by OpenBabel software¹⁸.

Descriptors Calculation. To develop cell line specific QSAR models, we have computed 863 chemical descriptors (1D, 2D, and 3D), which include constitutional, topological, geometric, electrostatic, hydrophobic, etc. using PaDEL software [18]. In addition, we have calculated 10 different classes of binary fingerprints (FP's) available in PaDEL software.

Descriptor Selection. It is a well known fact that all the descriptors are not relevant to the activity, and it is a fundamental requirement to remove irrelevant descriptors to develop robust QSAR models, thus we used feature selection techniques in order to select relevant features/descriptors. We used remove-useless function followed by CfsSubsetEval module with best-fit algorithm implemented in Weka¹⁹ for the selection of relevant descriptors. CfsSubsetEval determines the predictive ability of each attribute (chemical descriptor) and the redundancy among the descriptors. It also selects the best set of attributes that are highly correlated with the class for prediction, but at the same time have low inter-correlation. Further, we applied F-stepping, which removes one descriptor at a time to check its correlation with activity.

QSAR Models. We developed individual QSAR models for each of the 16 pancreatic cancer cell lines using SMOreg algorithm in Weka, which uses the sequential minimal

Table 2 | Rank wise list of predicted anticancer drugs (Top 10)

S. No.	Drug Bank ID	Name	Therapeutic Use
1.	DB01248	Docetaxel	Anticancer
2.	DB01229	Paclitaxel	Anticancer
3.	DB00541	Vincristine	Anticancer
4.	DB00570	Vinblastine	Anticancer
5.	DB06772	Cabazitaxel	Anticancer
6.	DB00361	Vinorelbine	Anticancer
7.	DB00954	Dirithromycin	Antibiotics
8.	DB00864	Tacrolimus	Immunosuppressant
9.	DB00337	Pimicrolimus	Immunosuppressant
10.	DB01030	Topotecan	Anticancer

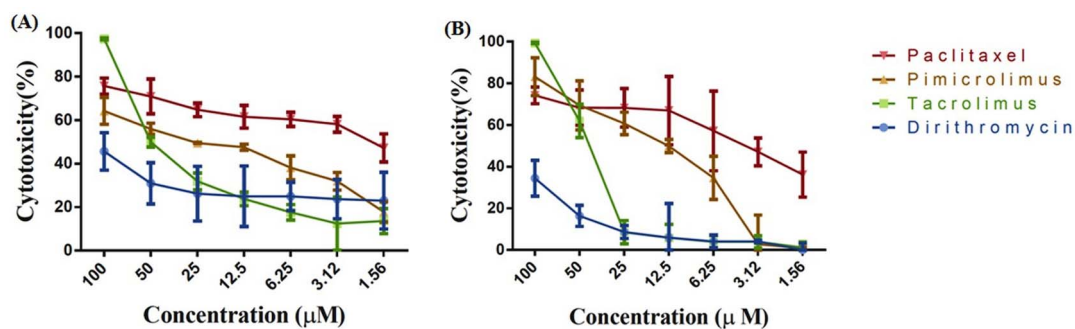



Figure 8 | Inhibition of cell proliferation by paclitaxel, dirithromycin, pimicrolimus and tacrolimus of pancreatic cancer cell lines: (a). PANC-1 (b). MIA-PaCa-2.

optimization algorithm for training a support vector classifier using polynomial or Gaussian kernels for regression problem²⁰. We used the command line version of Weka machine learning tool (version 3.6.6) for implementing SMOreg at RBF kernel¹⁹. Chemical descriptors and fingerprints used as input features for the development of QSAR models.

Cross Validation. Cross-validation was carried out to avoid under, and over-fitting of models²¹. We used 10-fold cross validation technique for building and evaluating our model. In order to implement this cross validation technique, we have randomly divided the original dataset into 10 parts. Nine datasets were used in training and remaining one was used exclusively for testing. This process is repeated, so that each part was tested once. Finally, we have calculated the Pearson correlation coefficient (R), coefficient of determination (R^2) and root mean square error (RMSE) as the performance measures.

Reagents and Cell Culture. Paclitaxel and tacrolimus were purchased from Calbiochem. Dirithromycin and pimicrolimus were purchased from Sigma with purity of 95%. Non-radioactive proliferation kit (based on MTS reagent) was purchased from Promega. Human pancreatic cancer cell lines MIA-PaCa-2 and PANC-1 were purchased from American Type Culture Collection (Rockville, MD). Cell lines were maintained in DMEM media supplemented with 10% fetal bovine serum at 37°C in humidified atmosphere (5% CO₂).

In vitro cytotoxicity assay. First, 1×10^4 cells in 100 μ l of media were plated in 96 well plates and allowed them to grow for 24 hours and treated with paclitaxel, dirithromycin, pimicrolimus and tacrolimus in various concentrations. After 72 hours, 20 μ l of MTS reagent (prepared according to the manufacturer's protocol) added to the each well followed by the additional incubation of 2 hours. Absorbance was measured at 490 nm using microplate reader (Tecan).



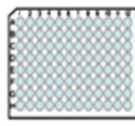
DiPCell: Designing of inhibitors of pancreatic cancer cell lines

CSIR - Institute of Microbial Technology, India

Home Draw Structure Batch Submission Design Analogs Algorithm Download Help Team Contact Us


Welcome to DiPCell

DiPCell is a webserver for the predicting inhibitory activity of unknown molecules and designing their analogs against pancreatic cancer cell lines. DiPCell implements the QSAR models, which were developed by using SMOreg machine learning algorithm on high throughput drug screening data. This high throughput screening data is obtained from the Genomics of Drug Sensitivity in Cancer (GDSC) database.




In vitro assays to check inhibitory activity of unknown molecules

This procedure is labor and time consuming



Compound Library



DiPCell

Select compounds with very less predicted inhibitory activity for experimental verification

DiPCell takes the MOL/SDF/SMILE of an unknown molecule as input and predicts the inhibitory activity in terms of IC₅₀ value. One of the major feature of DiPCell is that it generates the analogs of molecule and subsequent predicts of inhibitory activity of all the analogs. By this feature, user can select the best analog of any molecule as a inhibitory molecule.

Experimental procedure to screen unknown molecule library for some inhibitory activity is laborious and time consuming procedure, which is one of the bottleneck in drug development process. DiPCell can help in the computational screening of compound libraries to circumvent the search of drug candidates for pancreatic cancer.

Figure 9 | Web interface showing the home page of DiPCell.



1. Am. Cancer Soc., *Cancer Facts & Figures. Atlanta Am. Cancer Soc. 2013* 64 (2013).
2. Riker, A., Libutti, S. K. & Bartlett, D. L. Advances in the early detection, diagnosis, and staging of pancreatic cancer. *Surg oncol* **6**, 157–69 (1997).
3. Delhaze, M., Jonard, P., Gigot, J. F., Descamps, C. & Dive, C. Chronic pancreatitis and pancreatic cancer. An often difficult differential diagnosis. *Acta Gastroenterol. Belg.* **52**, 458–66.
4. Long, J. *et al.* Overcoming drug resistance in pancreatic cancer. *Expert Opin. Ther. Targets* **15**, 817–28 (2011).
5. Sheikh, R., Walsh, N., Clynes, M., O'Connor, R. & McDermott, R. Challenges of drug resistance in the management of pancreatic cancer. *Expert Rev. Anticancer Ther.* **10**, 1647–61 (2010).
6. Pliarchopoulou, K. & Pectasides, D. Pancreatic cancer: current and future treatment strategies. *Cancer Treat. Rev.* **35**, 431–6 (2009).
7. Di Marco, M. *et al.* Metastatic pancreatic cancer: is gemcitabine still the best standard treatment? (Review) *Oncol. Rep.* **23**, 1183–92 (2010).
8. Patra, C. R. *et al.* Targeted delivery of gemcitabine to pancreatic adenocarcinoma using cetuximab as a targeting agent. *Cancer Res.* **68**, 1970–8 (2008).
9. Hidalgo, M. Pancreatic cancer. *N. Engl. J. Med.* **362**, 1605–17 (2010).
10. Shore, S., Raraty, M. G. T., Ghaneh, P. & Neoptolemos, J. P. Review article: chemotherapy for pancreatic cancer. *Aliment. Pharmacol. Ther.* **18**, 1049–69 (2003).
11. Grønbaek, K., Hother, C. & Jones, P. A. Epigenetic changes in cancer. *APMIS* **115**, 1039–59 (2007).
12. Sadikovic, B., Al-Romaih, K., Squire, J. A. & Zielenska, M. Cause and consequences of genetic and epigenetic alterations in human cancer. *Curr. Genomics* **9**, 394–408 (2008).
13. Wang, H. *et al.* Identification of the MEK1(F129L) activating mutation as a potential mechanism of acquired resistance to MEK inhibition in human cancers carrying the B-RafV600E mutation. *Cancer Res.* **71**, 5535–45 (2011).
14. Garnett, M. J. *et al.* Systematic identification of genomic markers of drug sensitivity in cancer cells. *Nature* **483**, 570–5 (2012).
15. Neve, R. M. *et al.* A collection of breast cancer cell lines for the study of functionally distinct cancer subtypes. *Cancer Cell* **10**, 515–27 (2006).
16. Barretina, J. *et al.* The Cancer Cell Line Encyclopedia enables predictive modelling of anticancer drug sensitivity. *Nature* **483**, 603–7 (2012).
17. Kumar, R. *et al.* CancerDR: cancer drug resistance database. *Sci. Rep.* **3**, 1445 (2013).
18. O'Boyle, N. M. *et al.* Open Babel: An open chemical toolbox. *J. Cheminform.* **3**, 33 (2011).
19. Frank, E., Hall, M., Trigg, L., Holmes, G. & Witten, I. H. Data mining in bioinformatics using Weka. *Bioinformatics* **20**, 2479–81 (2004).
20. Cao, L. J. *et al.* Parallel sequential minimal optimization for the training of support vector machines. *IEEE Trans. Neural Netw.* **17**, 1039–49 (2006).
21. Kooperberg, C. *et al.* Logic regression for analysis of the association between genetic variation in the renin-angiotensin system and myocardial infarction or stroke. *Am. J. Epidemiol.* **165**, 334–43 (2007).
22. Ashburn, T. T. & Thor, K. B. Drug repositioning: identifying and developing new uses for existing drugs. *Nat. Rev. Drug Discov.* **3**, 673–83 (2004).
23. Chong, C. R. & Sullivan, D. J. New uses for old drugs. *Nature* **448**, 645–6 (2007).
24. Debnath, A. *et al.* A high-throughput drug screen for *Entamoeba histolytica* identifies a new lead and target. *Nat. Med.* **18**, 956–60 (2012).
25. Rodríguez-Paredes, M. & Esteller, M. Cancer epigenetics reaches mainstream oncology. *Nat. Med.* **17**, 330–9 (2011).
26. Chen, B.-J. *et al.* Harnessing gene expression to identify the genetic basis of drug resistance. *Mol. Syst. Biol.* **5**, 310 (2009).
27. Park, E. S. *et al.* Integrative analysis of proteomic signatures, mutations, and drug responsiveness in the NCI 60 cancer cell line set. *Mol. Cancer Ther.* **9**, 257–67 (2010).
28. Reinhold, W. C. *et al.* CellMiner: a web-based suite of genomic and pharmacologic tools to explore transcript and drug patterns in the NCI-60 cell line set. *Cancer Res.* **72**, 3499–511 (2012).
29. Nagpal, G. *et al.* PCMDB: Pancreatic Cancer Methylation Database. *Sci. Rep.* **4**, 4197 (2014).
30. Haibe-Kains, B. *et al.* Inconsistency in large pharmacogenomic studies. *Nature* **504**, 389–393 (2013).
31. Cumming, J. G., Davis, A. M., Muresan, S., Haeberlein, M. & Chen, H. Chemical predictive modelling to improve compound quality. *Nat. Rev. Drug Discov.* **12**, 948–62 (2013).

Acknowledgments

Authors are thankful to funding agencies Council of Scientific and Industrial Research (project Open Source Drug Discovery and GENESIS BSC0121) and Department of Biotechnology (project BTISNET), Govt. of India for financial support.

Author contributions

R.K. collected the data and created the datasets. R.K., K.C. and D.S. developed QSAR models. R.K. and K.C. created the back end server. R.K., K.C., A.G., and D.S. developed the front end user interface. R.K., A.G. and G.P.S.R. analysed the results and wrote the manuscript. R.K. carried out the experimental validations. R.K. and A.G. prepared figure 1, 2, 3, 5, 7, 8 and 9. D.S. prepared figure 4 and 6. G.P.S.R. conceived and coordinated the project, helped in the interpretation of data, refined the drafted manuscript and gave overall supervision to the project. All of the authors read and approved the final manuscript.

Additional information

Supplementary information accompanies this paper at <http://www.nature.com/scientificreports>

Competing financial interests: The authors declare no competing financial interests.

How to cite this article: Kumar, R., Chaudhary, K., Singla, D., Gautam, A. & Raghava, G.P.S. Designing of promiscuous inhibitors against pancreatic cancer cell lines. *Sci. Rep.* **4**, 4668; DOI:10.1038/srep04668 (2014).



This work is licensed under a Creative Commons Attribution-NonCommercial-ShareAlike 3.0 Unported License. The images in this article are included in the article's Creative Commons license, unless indicated otherwise in the image credit; if the image is not included under the Creative Commons license, users will need to obtain permission from the license holder in order to reproduce the image. To view a copy of this license, visit <http://creativecommons.org/licenses/by-nc-sa/3.0/>