

Anti-apoptotic response during anoxia and recovery in a freeze-tolerant wood frog (*Rana sylvatica*)

Victoria E.M. Gerber^{1,3}, Sanoji Wijenayake¹ and Kenneth B. Storey²

¹Department of Biology, Carleton University, Ottawa, ON, Canada

²Institute of Biochemistry, Department of Biology and Chemistry, Carleton University, Ottawa, ON, Canada

³Current affiliation: Faculty of Medicine, University of Ottawa, Ottawa, ON, Canada

ABSTRACT

The common wood frog, *Rana sylvatica*, utilizes freeze tolerance as a means of winter survival. Concealed beneath a layer of leaf litter and blanketed by snow, these frogs withstand subzero temperatures by allowing approximately 65–70% of total body water to freeze. Freezing is generally considered to be an ischemic event in which the blood oxygen supply is impeded and may lead to low levels of ATP production and exposure to oxidative stress. Therefore, it is as important to selectively upregulate cytoprotective mechanisms such as the heat shock protein (HSP) response and expression of antioxidants as it is to shut down majority of ATP consuming processes in the cell. The objective of this study was to investigate another probable cytoprotective mechanism, anti-apoptosis during oxygen deprivation and recovery in the anoxia tolerant wood frog. In particular, relative protein expression levels of two important apoptotic regulator proteins, Bax and p-p53 (S46), and five anti-apoptotic/pro-survival proteins, Bcl-2, p-Bcl-2 (S70), Bcl-xL, x-IAP, and c-IAP in response to normoxic, 24 Hr anoxic exposure, and 4 Hr recovery stages were assessed in the liver and skeletal muscle using western immunoblotting. The results suggest a tissue-specific regulation of the anti-apoptotic pathway in the wood frog, where both liver and skeletal muscle shows an overall decrease in apoptosis and an increase in cell survival. This type of cytoprotective mechanism could be aimed at preserving the existing cellular components during long-term anoxia and oxygen recovery phases in the wood frog.

Submitted 6 January 2016

Accepted 1 March 2016

Published 24 March 2016

Corresponding author

Kenneth B. Storey,

Kenneth_Storey@carleton.ca

Academic editor

Dunxian Tan

Additional Information and
Declarations can be found on
page 15

DOI 10.7717/peerj.1834

© Copyright
2016 Gerber et al.

Distributed under
Creative Commons CC-BY 4.0

OPEN ACCESS

Subjects Biochemistry, Molecular Biology

Keywords Anoxia, Wood frog, Pro-survival, Apoptosis, Cytoprotection, Hypometabolism

INTRODUCTION

Winter survival usually depends on an animal's ability to utilize physiological and biochemical mechanisms of freeze tolerance, freeze avoidance, or migration. Complete freezing of bodily fluids can be lethal to most animals and thus animals that use freeze-avoidance strategies substantially decrease the supercooling point of their bodily fluids and employ anti-freezing strategies to prevent spontaneous nucleation at subzero temperatures (Storey & Storey, 1988). By contrast, freeze-tolerant animals allow freezing of the extracellular fluid and utilize extracellular ice nucleating agents (INA) to manage ice growth but stringently prevent freezing of the cytoplasmic fluid (Storey & Storey, 2004a).

Natural freeze tolerance is known to occur in terrestrial insects of the Coleoptera, Diptera, Hymenoptera, and Lepidoptera orders (*Ring, 1980; Block, 1982; Storey & Storey, 1988*), intertidal marine gastropods and barnacles (*Aarset, 1982; Murphy, 1983*), and several species of terrestrial frogs, one of which is the freeze-tolerant wood frog, *Rana sylvatica* (*Storey & Storey, 1985; Storey & Storey, 1988*).

The North American wood frog, *R. sylvatica*, has the remarkable ability to survive winter temperatures that fall below 0 °C by converting 65–70% of total body water into extracellular ice (*Storey & Storey, 1984; Storey & Storey, 2004a*), and has been categorized as an “ecologically relevant” freeze tolerant species because unlike most other vertebrates, it has the ability to endure long-term freezing (days to weeks at a time) with a stable maximum ice content at subzero temperatures. The wood frog endures the penetration of ice crystals to a majority of their extracellular spaces including the brain, lungs, heart, abdominal cavity, plasma, bladder, and eye lens that interfere with all vital physiological functions such as neuronal activity, muscle movement, breathing, circulation, digestion and metabolism, and waste filtration (*Layne & First, 1991; Kling, Costanzo & Lee, 1994; Storey & Storey, 2004b*). Ice formation in the extracellular spaces can create many physiological concerns for the organism; one of which is the extensive damage crystal growth can cause to subcellular tissues and organs. Ice formation can burst capillary walls (*Rubinsky et al., 1987*), induce movement of inner organs, as well as produce reactive oxygen species (ROS) during recovery (*Storey & Storey, 2004a; Storey & Storey, 2004b*).

In addition, prolonged exposure to subzero temperatures can directly affect metabolic processes in several ways; (1) Conformation, orientation, and fluidity of the membrane phospholipids are temperature sensitive and thus can affect binding of transmembrane proteins, diffusion and transport, and proper functioning of membrane-bound metabolic processes. (2) Exposure to low temperature outside of the optimal range can induce protein denaturation that not only affect the functioning of individual metabolic enzymes but can also affect proper functioning of integrative metabolic pathways, the formation of multi-enzyme complexes, protein-protein interactions, and post-translational modifications of regulatory proteins (*Storey & Storey, 1988*).

Another main consequence of freezing is the onset of anoxia (lack of oxygen) and ischemia (disruption of oxygen flow via blood) (*Hochachka, 1986*). Freezing in a nutshell should be thought of as an ischemic event (*Storey & Storey, 2004b*). Extracellular freezing thickens and solidifies the blood plasma and hinders the delivery of oxygen, fuels, nutrients, and hormones to cells and organs. Prolonged exposure to subzero temperatures and low levels of oxygen circulation can generate an imbalance between ATP utilization and ATP production. If the organism under anoxia is no longer using mitochondrial oxidation to generate ATP to its fullest capacity, yet continue to utilize the available ATP at a normoxic rate, fuel reserves will diminish in a very short amount of time. ATP-limited frozen state cannot withstand regular rates of metabolic activity and as such *R. sylvatica* has been shown to downregulate its metabolic rate by suppressing energy consuming cellular processes such as gene expression (*Storey, 2004*), protein synthesis and degradation, cell cycle, ATP motive ion channel function, and selectively regulate the activities and expression levels of 25–28 metabolic enzymes that participate in glycolysis, TCA cycle, gluconeogenesis, amino

acid catabolism, and fatty acid oxidation (Storey & Storey, 1990; Cowan & Storey, 2001; Storey & Storey, 2004b). Furthermore, ischemic-reperfusion events that are associated with the freeze-thaw cycles in the wood frog produce reactive oxygen species (ROS) and can be a major source of oxidative stress (Storey & Storey, 2011). As such, several antioxidant enzymes have been shown to increase in activity during anoxia and reperfusion in the common wood frog (Joanisse & Storey, 1996). Other anoxia-tolerant vertebrates such as the red-eared sliders (*Trachemys scripta elegans*) utilize a myriad of cell preservation strategies such as the heat shock protein response (HSPs), unfolded protein response (UPR), and upregulation of antioxidant defenses to combat oxidative stress even though the overall metabolic rate of the animal has been reduced to approximately 10% of the normoxic values (Krivoruchko & Storey, 2010; Krivoruchko & Storey, 2015). This could suggest that anoxia-responsive signal transduction pathways may regulate the interplay between the hypometabolic and cytoprotective responses during anoxia and reperfusion in a stringent manner (Cowan & Storey, 2003), and not all cellular processes are universally shut down but rather selectively up and downregulated to meet the cellular demands of the organism (Cowan & Storey, 2001).

Although much work has been done on the physiological and biochemical responses to long-term freezing in wood frogs, the balance between cell survival and cell death (apoptosis) and the use of anti-apoptosis as a possible cytoprotective mechanism has not been studied. Previous work done on the champion mammalian hibernator, the 13-line ground squirrel (*Ictidomys tridecemlineatus*) have illustrated that anti-apoptosis may be used as a cytoprotective mechanism to preserve cellular integrity during torpor-arousal cycles (Rouble *et al.*, 2013). Furthermore, hibernation studies done in the brain of horseshoe bats have discovered multiple genes that are associated with apoptosis to be significantly upregulated (Chen *et al.*, 2008).

Exploring the cytoprotective role of the anti-apoptotic pathway in a naturally occurring freeze-tolerant model such as the wood frog has tremendous therapeutic potential, as important regulatory mechanisms that enable stress-tolerant species to survive are usually dysfunctional in human illnesses and/or potential hurdles to overcome in cryopreservation of organs. Previous studies have shown substantial overlap between the stressors that are associated with cryopreservation and stressors that are known to activate apoptosis (such as freeze/thaw and anoxia/recovery) and failures associated with cryopreservation have now been directly linked to apoptosis (Baust, Van Buskirk & Baust, 1998; Baust, Dayong & Baust, 2009).

Kerr, Wyllie & Currie (1972) characterized apoptosis initially as plasma membrane blebbing, cell shrinkage, chromatin condensation, and degradation of DNA. Apoptosis is now recognized to be a tightly controlled and actively regulated process of cell death, and plays a vital role in cellular immunity as well as in the regulation of cellular growth and differentiation (Elmore, 2007). There are two main apoptotic pathways—extrinsic and intrinsic, and both pathways receive information and activate apoptosis independently of one another (Ashkenazi, 2008).

The extrinsic apoptotic pathway is activated from stimuli outside the cell by apoptosis inducing ligands (e.g., growth factors, hormones, cytokines, toxins, etc.). However, the

primary focus of this paper is the intrinsic (or mitochondrial) apoptotic pathway, which activates apoptosis from inside the cell through interactions between members of the B-cell leukemia/lymphoma (Bcl) protein family. The Bcl family is a superfamily that can be divided to three subfamilies; one promoting cell death (ex. Bax and Bak), another promoting cell survival or anti-apoptosis (ex. Bcl-2 and Bcl-xL), and a third family with a conserved BH3 domain (ex. Bid and Bim) enabling them to bind and regulate anti-apoptotic Bcl-2 proteins. Developmental cues or severe cellular stress will stimulate the intrinsic pathway through transcription or post-translational activation of activator BH3-only proteins (Bid and Bim), which in turn drive the activation of pro-apoptotic proteins (Bax and Bak) (*Xu et al., 2013*). Studies into the biochemical, cellular, and physiological roles of Bcl family members have revealed that BH3-only proteins displace anti-apoptotic proteins Bcl-2 and Bcl-xL to allow pro-apoptotic proteins (Bax and Bak) to self-associate and engage the mitochondria (*Fig. 1*) (*Kodama et al., 2012; Xu et al., 2013*).

p53 is a well characterized tumor suppressor and cell cycle regulatory protein that is also stabilized and activated by cellular stress (*Oren, 1994; Ko & Prives, 1996; Levine, 1997*). p53 is responsible for initiating several cellular responses such as cell cycle arrest, senescence, cellular differentiation, and repair of genotoxic damage. Mechanisms of p53-dependent apoptosis include p53 inducing Bax and Bak oligomerization and physically interacting with Bcl-xL and Bcl-2 to antagonize their anti-apoptotic effects (*Wolff et al., 2008*). Notably, phosphorylation of p53 at S46 residue has been shown to induce apoptosis (*Oda et al., 2000; Vousden & Lu, 2002*) by regulating the mitochondrial release of cytochrome c and SMAC (*Schuler & Green, 2001*), and increasing the expression of genes that inhibit cell survival (*Bouvard et al., 2000*).

Inhibitor of apoptotic proteins (IAPs), c-IAP and x-IAP, impede apoptosis at the level of effector caspase activation. IAPs will suppress intracellular proteases that facilitate the proteolytic cleave and activation of effector caspases (*Deveraux & Reed, 1999*). In particular, IAPs block cell death by binding and inhibiting effector caspases-3 and caspase-7, as well as suppress intercommunication between intrinsic and extrinsic apoptotic pathways.

The current study looks at whether programmed cell death (apoptosis), considered to be an energy expensive process, is selectively regulated during anoxia exposure in the freeze-tolerant wood frog and whether an anti-apoptosis response may play a cytoprotective role to minimize cellular damage. In particular, the expression patterns of two important apoptotic regulator proteins, Bax and p-p53 (S46), and five anti-apoptotic/pro-survival proteins, Bcl-2, p-Bcl-2 (S70), Bcl-xL, c-IAP, and x-IAP, in response to 24 Hr anoxic exposure and 4 Hr recovery stages were analyzed in the liver and skeletal muscle of *R. sylvatica*.

MATERIAL AND METHODS

Animal preparation

During early spring, active and mature male wood frogs were sampled from meltwater ephemeral ponds in lightly wooded areas near Oxford Mills, Ontario, Canada on the first or second night when breeding choruses were active in mid-April. Water temperature

was about 5–7 °C. Frogs were held in coolers on snow taken from the edges of the ponds and transported to the laboratory. Prior to experimentation, the frogs were washed in a tetracycline bath and then—kept at 5 °C for 1–2 weeks inside plastic containers with damp sphagnum moss flooring before proceeding to anoxic treatments. Control (normoxic) frogs were sampled directly from this condition. Note: 5 °C is the average seasonal temperature recorded in Ottawa during early spring and the frogs remained active after being kept at 5 °C for 1–2 weeks.

For the anoxia experiments, 5 °C acclimated adult frogs were placed in sealed plastic jars (700 mL) with a layer of damp paper towels (wetted with distilled water that was previously bubbled with 100% N₂ gas) and were chilled on crushed ice. The jars used were connected to a nitrogen gas line by a syringe port on the lids. The jars were flushed with nitrogen gas for 20 min (a second port allowed air to vent). Frogs were quickly placed in the jars (6–8 frogs per jar), all ports were closed using parafilm, and nitrogen gassing was continued for 30 min at 5 °C. Jars were then placed in a 5 °C incubator for 24 Hrs. After 24 Hr of anoxic exposure, half the jars were placed on ice and the nitrogen lines were reconnected. The 24 Hr anoxic frogs were sampled from this condition. Frogs in the remaining jars were transferred to new jars and exposed to normal air for 4 Hr at 5 °C to facilitate aerobic recovery and sampled immediately. A 24 Hr anoxia exposure was chosen based on a previous demonstration by *Holden & Storey (1997)* that showed wood frogs can readily endure as much as 48 Hr anoxia at 5 °C (Note: 30 mins, 1 Hr, 4 Hr, and 48 Hr anoxic exposure was conducted without mortality in any experimental group). Furthermore, the use of the 24 Hr anoxic exposure time and 4 Hr recovery time points parallels several published studies of the metabolic responses to anoxia by wood frogs (*Zhang & Storey, 2012; Zhang & Storey, 2013; Sullivan, Biggar & Storey, 2015a*) as well as studies of freeze/thaw response in the wood frog (*McNally et al., 2002; McNally, Sturgeon & Storey, 2003; Sullivan, Biggar & Storey, 2015b*). All frogs were sacrificed by pithing, and liver and skeletal muscle of the hind legs from control, 24 Hr anoxia, and 4 Hr recovery were dissected and immediately placed in liquid nitrogen and subsequently stored at –80 °C for future use.

All animal protocols for care, experimentation, and euthanasia had the approval of the Carleton University Animal Care Committee (#13683) in accordance with the guidelines established by the Canadian Council on Animal Care. Note that 24 hr anoxic stress is survivable in nature by the wood frogs.

Total protein isolation

Briefly, frozen samples were quickly weighed, crushed into small pieces under liquid nitrogen using a mortar and pestle. Frozen tissues were homogenized 1:2 w/v in pre-chilled homogenizing buffer (20 mM HEPES, pH 7.4, 200 mM NaCl, 0.1 mM EDTA, 10 mM NaF, 1 mM Na₃VO₄, 10 mM β-glycerophosphate), 1 mM phenylmethylsulfonyl fluoride (PMSF) and 1 μl/ml Protease Inhibitor Cocktail (BioShop; Cat. # PIC001) using a Polytron PT10 homogenizer. Supernatants were removed after the samples were centrifuged at 12,000 rpm for 15 min at 4 °C. The Bradford assay was used to measure the soluble protein concentrations using the Bio-Rad protein reagent (BioRad Laboratories, Hercules, CA; Cat # 500–0006) and a MR5000 microplate reader at 595 nm. Final protein concentrations

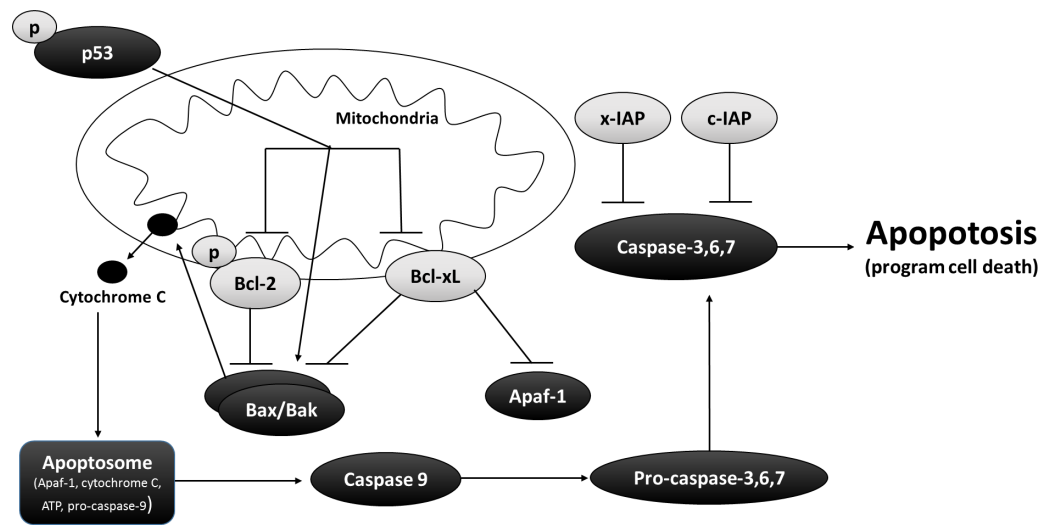


Figure 1 Interrelationship between pro and anti-apoptotic proteins in the mitochondrial matrix. Bcl-2 and Bcl-xL are two well-known anti-apoptotic proteins that protects the integrity of the mitochondrial matrix by suppressing Bax, Apaf-1, cytochrome c, and Caspase 9 from initiating programmed cell death during times of low cellular energy. In addition, x-IAP and c-IAP although not directly associated with the functioning of the mitochondrial matrix, inhibit pro-apoptotic proteins such as Caspase 3, 6, and 7. The arrow head designate pro-regulation while blunt-head designates inhibitory regulation. The image was modified from [Rouble et al. \(2013\)](#).

were adjusted to 10 $\mu\text{g}/\mu\text{L}$ for controls and liver stress samples and 5 $\mu\text{g}/\mu\text{L}$ for skeletal muscle stress samples by adding a small volume of homogenizing buffer. Samples were then mixed 1:1 v/v with 2X SDS sample buffer (100 mM Tris-base, 4% w/v SDS, 20% v/v glycerol, 0.2% w/v bromophenol blue, 10% v/v 2-mercaptoethanol, pH 6.8), boiled for 5 min and immediately stored at -40°C until use.

Immunoblotting

SDS-polyacrylamide gels were prepared containing 0.13 M Tris pH 6.8, 0.1% SDS, 0.1% APS, 0.1% TEMED and acrylamide concentrations of 5% for the upper stacking gel and 8–15% for the resolving gel depending on the molecular weight of the protein of interest. Aliquots of wood frog liver or skeletal muscle samples containing 20–30 μg of soluble protein were loaded into wells and resolved on a BioRad Mini Protean III apparatus at 180 V for 60–90 min. In order to confirm the molecular weight of the target protein bands, 3–5 μl aliquots of PiNK Plus Prestained Protein Ladder (Froggabo: PM005-0500) were loaded onto one of the lanes.

Proteins were then electroblotted onto 0.25 μm polyvinylidene difluoride (PVDF) membranes by wet transfer with 1X transfer buffer (25 mM Tris pH 8.5, 192 mM glycine, 20% methanol) at 4°C for 90 min at 160 mA and blocked with high molecular weight polyvinyl alcohol (PVA) (70–100 kDa) or milk (2.5–10% w/v) made up in 0.5% TBST solution (20 mM Tris base, pH 7.6, 140 mM NaCl, 0.05% v:v Tween-20). Membranes were then probed with specific primary antibodies (1:1,000 dilution in 0.5% TBST) at 4°C for 12–24 Hrs on a rocking platform. Antibodies each cross-reacted with single strong bands on the immunoblots at the expected molecular masses for Bcl-2 (MW: 26 kDa—Cat

#2870), p-Bcl-2 (MW: 26 kDa—Cat #2827), Bcl-xL (MW: 30 kDa—Cat #2764), c-IAP (MW: 69 kDa—Cat #4952), and p-p53 (S46) (Mw: 40 kDa—Cat#2521) were purchased from Cell Signaling). x-IAP (53 kDa) (Cat #7074) was purchased from Santa Cruz and Bax (24 kDa) (Cat #GTX77804) was purchased from GeneTex.

Membranes were washed several times with 0.5% TBST, followed by incubation with horse radish peptidase (HRP)-linked anti-rabbit IgG secondary antibody (1:8000 v/v dilution) for ~30 min before visualization using enhanced chemiluminescence (H₂O₂ and luminol). Blots were then stained using Coomassie blue stain (0.25% w/v Coomassie brilliant blue, 7.5% v:v acetic acid, 50% methanol).

Data and statistics

ChemiGenius Bio Imaging System and GeneTools software (SynGene) were used to visualize and quantify the immunoblots respectively. Bands were normalized against several Coomassie blue stained protein bands with constant expression between control and 24 Hr anoxic and 4 Hr recovery conditions and are of different molecular weight from the target band. Data were expressed as means \pm SEM, $n = 3-4$ independent samples from different animals and were analyzed using one-way analysis of variance followed by a Tukey Post-Hoc test; $p < 0.05$ was accepted as indicating a statistically significant difference.

RESULTS

Anti/Pro-apoptosis response in liver tissue of anoxia tolerant wood frog

Relative protein expression levels of anti-apoptotic proteins Bcl-2, p-Bcl-2 (S70), and Bcl-xL were measured using western immunoblotting in liver tissues (Fig. 2). Bcl-xL exhibited 1.5-fold upregulation in response to 24 Hr anoxia and 2.0-fold upregulation during 4 Hr recovery compared to normoxic control conditions. Bcl-2 activity is known to be regulated by site-specific phosphorylation at S70 residue, and both phosphorylated and non-phosphorylated forms of Bcl-2 showed decreased expression compared to the normoxic condition ($p < 0.05$).

The relative expression levels of the two anti-apoptotic proteins, x-IAP and c-IAP that are responsible for inhibiting the function of Caspase 3, 6, 7 were also assessed using western immunoblotting (Fig. 3). x-IAP showed no change in expression, whereas c-IAP showed 0.6-fold increase in expression in response to 24 Hr anoxia ($p < 0.05$).

Furthermore, relative protein expression levels of pro-apoptotic proteins Bax and p-p53 (S46) were measured using western immunoblotting in liver tissues (Fig. 4). When posttranslational modified at S46 residue, p53 facilitates pro-apoptosis and Bax function in its unmodified form as a pro-apoptotic factor. Both Bax and p-p53 (S46) showed no differential expression upon exposure to 24 Hr anoxia and 4 Hr recovery conditions.

Anti/Pro-apoptosis response in skeletal tissue of anoxia tolerant wood frog

Relative protein expression levels of anti-apoptotic proteins Bcl-2, p-Bcl-2 (S70), and Bcl-xL were measured using western immunoblotting in skeletal muscle tissues (Fig. 5).

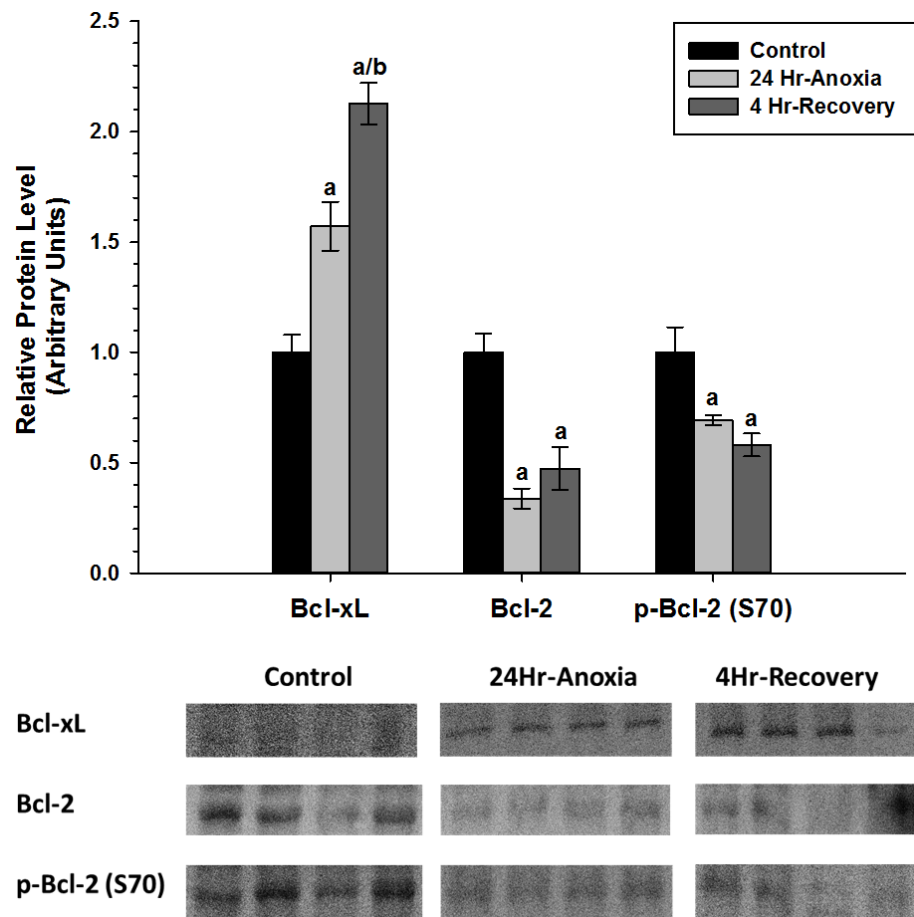


Figure 2 Relative changes in the protein expression levels of the anti-apoptotic Bcl family of proteins (Bcl-2, p-Bcl-2 (S70), and Bcl-xL) in the liver of *Rana sylvatica* in response to 24 Hr anoxia and 4 Hr recovery as determined by western immunoblotting. Data are mean \pm SEM ($N = 3-5$ independent protein isolations from different animals). Data were analyzed using analysis of variance with a post hoc Tukey test ($p < 0.05$); (A) Significantly different from the corresponding control ($P < 0.05$). (B) Significantly different values from 24 Hr anoxia.

p-Bcl-2 (S70) and Bcl-xL showed significant downregulation in expression compared to the normoxic control conditions ($p < 0.05$). On the contrary, Bcl-2 showed increased expression during 4 Hr recovery compared to control.

x-IAP and c-IAP, that are responsible for inhibiting the function of pro-apoptotic proteins Caspase 3, 6, 7, showed no difference in expression compared to the control conditions ($p < 0.05$; Fig. 6).

In addition, relative protein expression levels of pro-apoptotic proteins Bax and p-p53 (S46) were measured using western immunoblotting in skeletal muscle (Fig. 7). Bax showed a two-fold upregulation whereas p-p53 (S46) showed a significant downregulation in expression upon exposure to 24 Hr anoxia and 4 Hr recovery conditions ($p < 0.05$).

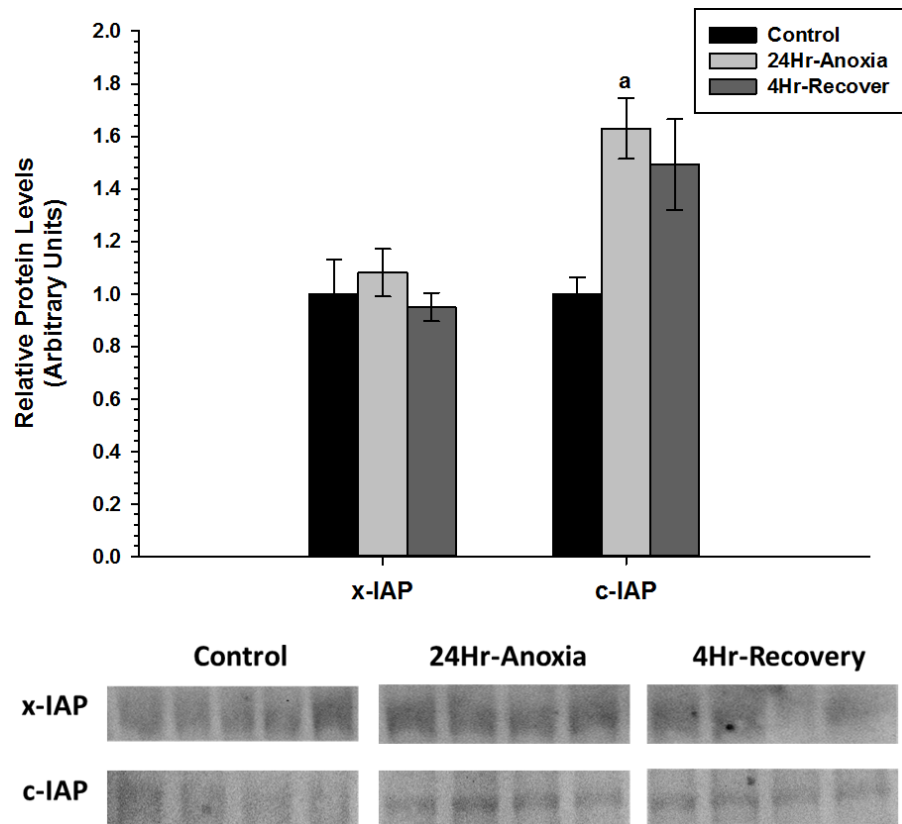


Figure 3 Relative changes in the protein expression levels of the anti-apoptotic proteins x-IAP and c-IAP in the liver of *Rana sylvatica* in response to 24 Hr anoxia and 4 Hr recovery as determined by western immunoblotting. Data are mean \pm SEM ($N = 3-5$ independent protein isolations from different animals). Other information as in Fig. 2.

DISCUSSION

The North American Wood frog, *R. sylvatica*, can survive sub-zero temperatures by utilizing a strategy called freeze-tolerance, in which 65–70% of the total body water is converted into extracellular ice (Storey & Storey, 1984). One of the main challenges of freeze-tolerance is the onset of anoxia and ischemia, such that freezing of the blood plasma cuts off oxygen and nutrient delivery to other organs and removal of waste is interrupted. In addition, having 65–70% of the body frozen means that metabolic rate will be substantially low as ATP is only produced through anaerobic means (i.e., glycolysis) and the limited amount of ATP produced is used primarily to support basal metabolic functions and maintain only the necessary molecular pathways for survival such as antioxidant defenses (Joanisse & Storey, 1996; Dawson, Katzenback & Storey, 2015) and the heat shock protein (HSP) response. Ischemia-reperfusion events generally lead to oxidative damage as re-oxygenation results in a rapid increase in reactive oxygen species in the intracellular space that can damage cellular macromolecules. Therefore, both energy conservation and cytoprotective strategies need to be equally coordinated to ensure long-term survival in the freeze tolerant frog that has been shown to survive several weeks of continuous freezing

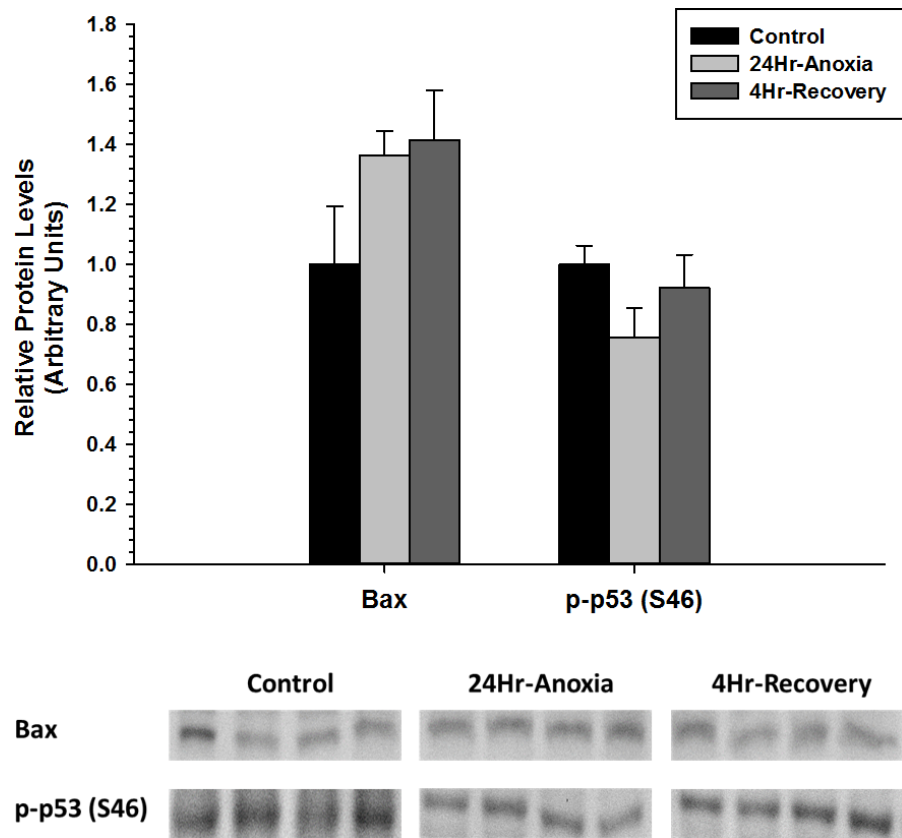


Figure 4 Relative changes in the protein expression levels of the pro-apoptotic proteins Bax and p-p53 (S46) in the liver of *Rana sylvatica* in response to 24 Hr anoxia and 4 Hr recovery as determined by western immunoblotting. Data are mean \pm SEM ($N = 3-5$ independent protein isolations from different animals). Other information as in Fig. 2.

(Layne & First, 1991) and can survive two days of exposure to nitrogen gas at 5 °C (Holden & Storey, 1997).

As such, the present study explores the apoptotic/pro-survival pathways to assess whether anti-apoptosis is part of the hypometabolic response that is aimed at conserving energy and a possible cytoprotective mechanism used to enhance long-term survival and recovery. In particular, the relative expression levels of pro-survival targets involved in the inhibition of Mitochondrial Outer Membrane Permeabilization (MOMP) (Bcl-2, p-Bcl-2 (S70), and Bcl-xL) and inhibition of caspases 3, and 7 (c-IAP and x-IAP), and two main pro-apoptotic proteins (Bax and p-p53 (S46)) were measured by western immunoblotting, comparing normoxic-control conditions to 24 Hr anoxic, and 4 Hr oxygen recovery in liver and skeletal muscle.

Taken together, the data reveals that there is tissue-specific regulation of the anti-apoptotic proteins during both 24 Hr anoxic and 4 Hr recovery conditions in *R. sylvatica*. In liver, the anti-apoptotic targets that inhibit MOMP, the Bcl family of proteins, show differential expression patterns (Fig. 2). Bcl-xL in particular increased in expression by 0.5–2 fold in response to 24 Hr anoxia and 4 Hr recovery, respectively, while Bcl-2 and

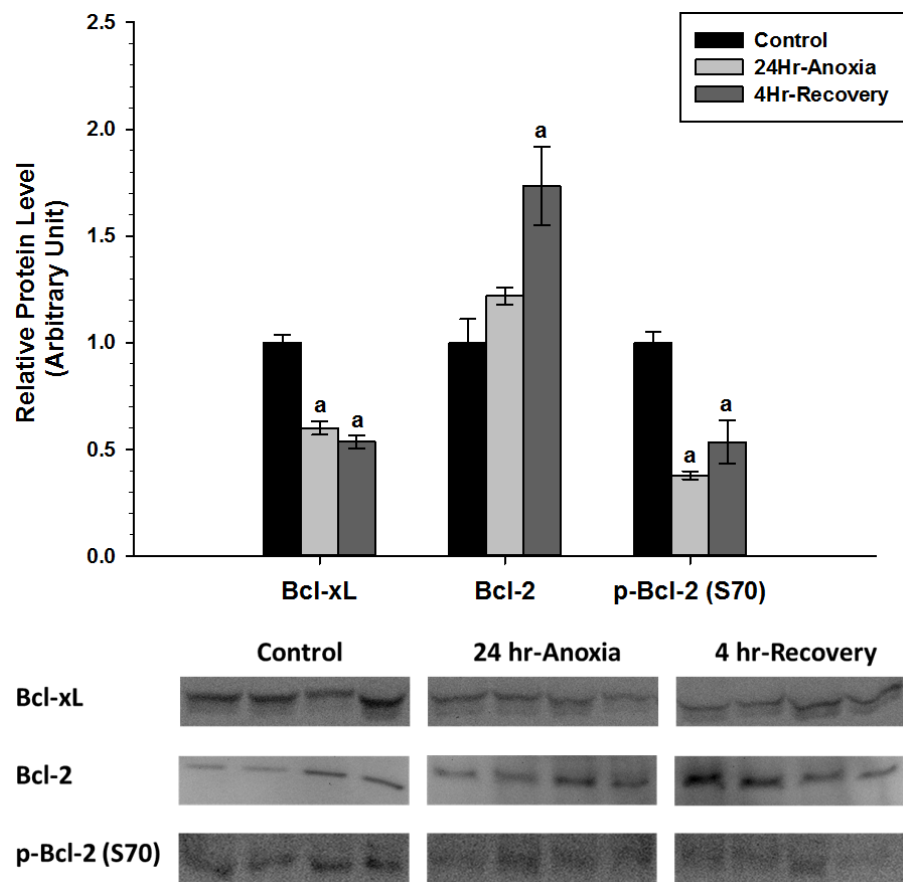


Figure 5 Relative changes in the protein expression levels of anti-apoptotic Bcl family of proteins (Bcl-2, p-Bcl-2 (S70), and Bcl-xL) in the skeletal muscle of *Rana sylvatica* in response to 24 Hr anoxia and 4 Hr recovery as determined by western immunoblotting. Data are mean \pm SEM ($N = 3-5$ independent protein isolations from different animals). Other information as in Fig. 2.

p-Bcl-2 (S70) significantly decreased ($p < 0.05$). Competitive dimerization between pro and anti-apoptotic protein targets determines cell survival or death. Bcl-2 and Bcl-xL can dimerize with the pro-apoptotic protein Bax (Chittenden *et al.*, 1995; Sedlak *et al.*, 1995; Reed, 1997; Ding *et al.*, 2014), and according to Yang *et al.* (1995), 50% reduction in the formation of Bcl:Bax heterodimers and increase in Bax:Bax homodimerization facilitate cell death. An increase in Bcl-xL expression during 24 Hr anoxia and 4 Hr recovery in the wood frog would enhance heterodimerization between Bcl-xL and Bax and thereby inhibit apoptosis.

Although the physiological relevance of Bcl-2 phosphorylation is still under investigation, there is strong evidence suggesting that phosphorylation of Bcl-2 at S70 leads to loss of anti-apoptotic function (Ito *et al.*, 1997; Deng *et al.*, 2003). Energy conservation is of utmost importance during times of long-term anoxia and ischemia, thus liver could be monopolizing Bcl-xL to promote pro-survival of the hepatocytes as opposed to using both Bcl-2 and Bcl-xL. Therefore, the decrease in p-Bcl-2 levels seen in the liver along with increased expression of Bcl-xL protein could be a sign of enhanced cell survival.

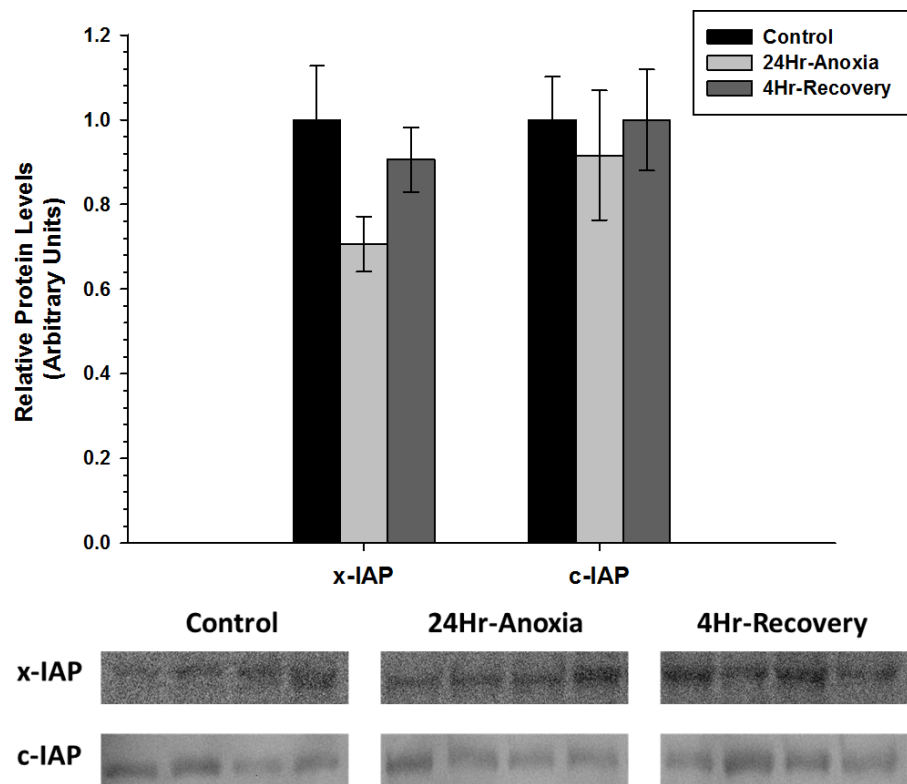


Figure 6 Relative changes in the protein expression levels of the anti-apoptotic proteins x-IAP and c-IAP in the skeletal muscle of *Rana sylvatica* in response to 24 Hr anoxia and 4 Hr recovery as determined by western immunoblotting. Data are mean \pm SEM ($N = 3-5$ independent protein isolations from different animals). Other information as in Fig. 2.

Rouble et al. (2013) suggested that increases in IAP protein levels shown in hibernating ground squirrels may promote cell survival against ER-induced apoptosis and function as an antagonist of cell death. Furthermore, in several apoptotic models, severe hypoxia and anoxia have been shown to upregulate IAP expression and facilitate cell survival independent of other cytoprotectant mechanisms (*Dong et al., 2001; Dong, Wang & Venkatachalam, 2003; Hamanaka et al., 2009*). Similarly, there was an upregulation of c-IAP in response to 24 Hr anoxia in the wood frog (*Fig. 3*). This could suggest a possible inhibition of caspase 3 and 7 activity and further repression of the apoptotic pathway in the liver.

In opposition to anti-apoptotic proteins, pro-apoptotic proteins steer cells toward death once the cells have been exposed to injury and are deemed irreparable. However, during metabolic rate depression in which ATP is in limited supply, cellular components and macromolecules will not be robustly regenerated, and the cell cycle is strongly suppressed (*Zhang & Storey, 2012*). The anti-apoptotic pathway could play an essential role in cytoprotection similar to the increase in antioxidant defenses (*Dawson, Katzenback & Storey, 2015*) aimed at preserving the existing cellular components during long term anoxia and oxygen recovery phase. In the liver, pro-apoptotic proteins Bax and p-p53 (S46) did not show an increase in expression during both 24 Hr anoxia and 4 Hr oxygen

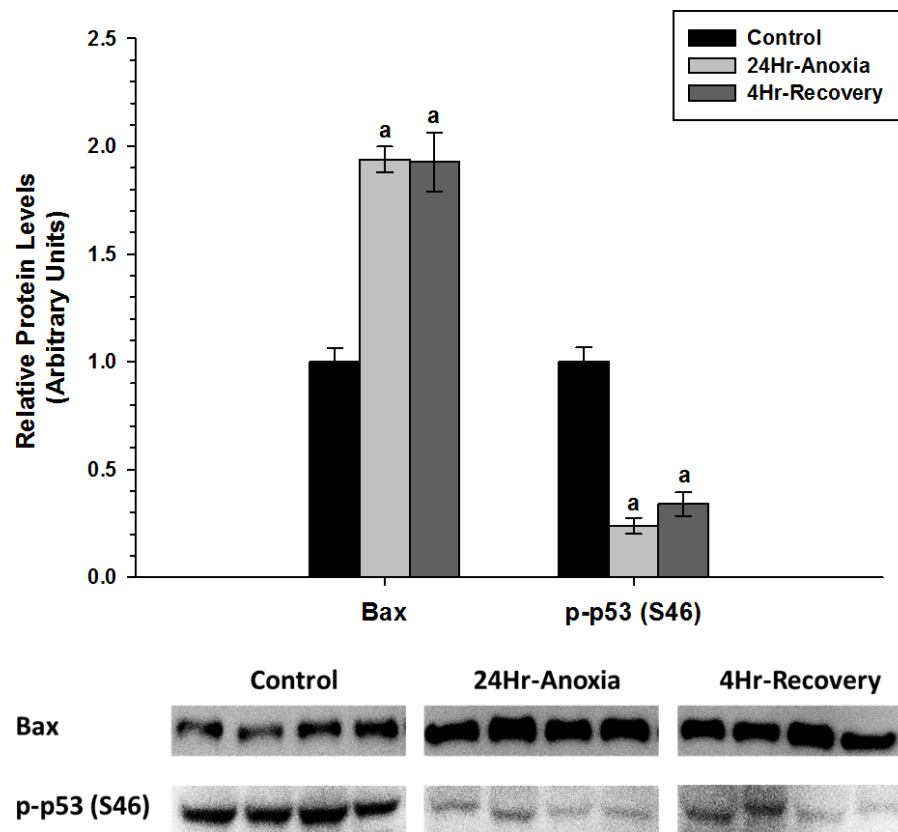


Figure 7 Relative changes in the protein expression levels of the pro-apoptotic proteins Bax and p-P53 (S46) in the skeletal muscle of *Rana sylvatica* in response to 24 Hr anoxia and 4 Hr recovery as determined by western immunoblotting. Data are mean \pm SEM ($N = 3-5$) independent protein isolations from different animals). Other information as in Fig. 2.

recovery conditions (Fig. 4). Furthermore, Akt has been shown to inhibit programmed cell death through increased phosphorylation of p21 and FOXO1, two transcription factors when phosphorylated at T145 and S256 respectively promote cell survival, during 24 Hr freezing and 8 Hr thaw in the liver of wood frogs (Zhang & Storey, 2012; Zhang & Storey, 2013). This could further suggest that apoptosis may not be fully activated in the liver.

Liver has been shown to contain approximately 1,000 mol/gww of glycogen (Storey & Storey, 1996) prior to the onset of freezing and play an important role in regulating both cryoprotection and energy maintenance. One of the main biochemical adaptations that support freeze tolerance and survival in wood frogs is the release of glucose as a cryoprotectant that regulates cell volume during extracellular ice formation (Storey & Storey, 1986). Therefore, very high concentrations of glucose are synthesized and rapidly distributed by the liver within minutes of the first onset of freezing; blood and liver glucose rise by 3.3–6.6 fold respectively, while overall glucose levels in core organs can rise to 150–300 mol/gram wet weight (gww) (Storey & Storey, 1986; Storey, Bischof & Rubinsky, 1992; Storey & Mommsen, 1994). Thus, enhanced mechanisms of cell survival could be put in place by the wood frog to preserve this essential organ during times of low oxygen availability.

In the skeletal muscle, p-Bcl-2 (S70) and Bcl-xL showed a significant decrease during anoxic and recovery conditions, while Bcl-2 showed a significant increase in expression during 4 Hr recovery compared to the control and 24 Hr anoxia (Fig. 5). *Hockenbery et al. (1993)* found that Bcl-2 prevents cells from H₂O₂ and oxidative stress-induced deaths. A substantial portion of the oxidative damage tends to occur not during the anoxic period but rather during the reperfusion phase when oxygen is reintroduced into the system. The sudden increase in oxygen radicals during reperfusion can temporally overwhelm the cellular antioxidant system and impose irreversible damage to DNA, proteins, lipids, and alter the viability and integrity of cells (*Storey & Storey, 2004a*). Bcl-2 was shown to be involved with fine-tuning the balance between mitochondrial oxygen consumption for energy production and ROS generation by modifying mitochondrial respiration to fulfill energy demands without inducing harmful increases in ROS (*Chen & Pervaiz, 2007*). In addition, Bcl-2 may be important in maintaining membrane lipid integrity by suppressing ROS damage (*Kane, Sarafin & Auton, 1993*) and has been implicated in protein and ion transport across cell membranes (*Liu et al., 1996; Kluck et al., 1997; Lam et al., 1994*). Ion channel regulation in particular plays an integral part in controlling a cell's susceptibility to death and as such Bcl-2 and Bcl-xL have been shown to form ion channels on synthetic lipid membranes (*Minn et al., 1997*).

Additionally, increased expression levels of Bcl-2 and significant decrease in p-Bcl-2 (S70) could indicate an enhanced heterodimerization between Bcl-2 and Bax, thus delaying Bax translocation to the mitochondria (*Chittenden et al., 1995; Sedlak et al., 1995; Reed, 1997*) to facilitate apoptosis. According to *Basu & Haldar (1998)*, phosphorylation at S70 can disrupt the Bcl-2:Bax heterodimerization to a certain extent and facilitate homodimerization of Bax to each other. Therefore, a decrease in p-Bcl-2 (S70) levels in 24 Hr anoxic and 4 Hr recovery could be a preventative mechanism that ensures Bcl-2 exists in a hypophosphorylated state to maintain cell survival.

The upregulation of pro-apoptotic protein Bax in the skeletal muscle suggests that apoptosis could be further inhibited by another mechanism. Previous studies have found that HSPs can inhibit apoptosis. For example, Hsp27, Hsp70 and Hsp90 have been shown to bind to Apaf-1 and reduce caspase activation (*Beere et al., 2000; Pandey et al., 2000*). Hsp27 can also inhibit the release of cytochrome c from the mitochondria (*Gorman et al., 2005*), and bind directly to cytosolic cytochrome c, sequestering it from Apaf-1 (*Garrido et al., 1999*). Hsp60 has also been shown to heterodimerize with Bax and prevent Bax translocation into the mitochondria from the cytosol (*Gupta & Knowlton, 2002*). Additionally, the significant decrease in p-p53 (S46) levels during 24 Hr anoxic and 4 Hr thaw by 0.5-fold could further suggest that apoptosis is possibly restricted in the skeletal muscle as p53 phosphorylation at S46 residue is known to induce a pro-apoptotic response (Fig. 7) (*Vousden & Lu, 2002*). Furthermore, *Wang et al. (2006)* investigated the relationship between cytoprotection and apoptosis and reported that mitochondrial-driven apoptotic events such as Bax accumulation, cytochrome c release, and p53 activation were substantially suppressed during hypoxia and anoxia to facilitate cell viability and survival.

Overall, the current data suggests a tissue-specific regulation of the anti-apoptotic pathway, which could be attributed to distinctive oxidative challenges to liver and skeletal

muscle in the wood frog during long-term anoxia and recovery. Furthermore, the interplay between anti-apoptotic proteins Bcl-2, p-Bcl-2(S70), Bcl-xL, c-IAP, and x-IAP and proapoptotic proteins Bax, and p53 may determine cell fate (*Basu & Haldar, 1998*), and as suggested by *Rouble et al. (2013)* activation of the anti-apoptotic pathway may be central to energy conservation during hypometabolism and play a cytoprotectant role that ensures long-term cell and macromolecular viability during 24 Hr anoxic and 4 Hr aerobic recovery conditions.

ADDITIONAL INFORMATION AND DECLARATIONS

Funding

This work was supported by a discovery grant awarded to Dr. KB Storey from the Natural Sciences and Engineering Research Council (NSERC) Canada (#6793). VEM Gerber held a NSERC PGSD scholarship, Sanoji Wijenayake holds a postgraduate Queen Elizabeth II Graduate Scholarship in Science and Technology, and KB Storey holds the Canada Research Chair for Molecular Physiology. The funders had no role in study design, data collection and analysis, decision to publish, or preparation of the manuscript.

Grant Disclosures

The following grant information was disclosed by the authors:

Natural Sciences and Engineering Research Council (NSERC) Canada: (#6793).
NSERC PGSD.

Queen Elizabeth II Graduate Scholarship in Science and Technology.
Canada Research Chair for Molecular Physiology.

Competing Interests

Kenneth B. Storey is an Academic Editor for PeerJ.

Author Contributions

- Victoria E.M. Gerber performed the experiments, analyzed the data, wrote the paper, prepared figures and/or tables, reviewed drafts of the paper.
- Sanoji Wijenayake conceived and designed the experiments, performed the experiments, analyzed the data, wrote the paper, prepared figures and/or tables, reviewed drafts of the paper.
- Kenneth B. Storey conceived and designed the experiments, contributed reagents/materials/analysis tools, wrote the paper, reviewed drafts of the paper.

Animal Ethics

The following information was supplied relating to ethical approvals (i.e., approving body and any reference numbers):

Carleton University Animal Care Committee, 13683.

Data Availability

The following information was supplied regarding data availability:

Raw ECL and Coomassie data corresponding to the study can be provided upon request. Please email the corresponding author.

REFERENCES

- Aarset AV. 1982.** Freezing tolerance in intertidal invertebrates (a review). *Comparative Biochemistry Physiology A* 73:571–580 DOI 10.1016/0300-9629(82)90264-X.
- Ashkenazi A. 2008.** Directing cancer cells to self-destruct with pro-apoptotic receptor agonists. *Nature Reviews Drug Discovery* 7:1001–1012 DOI 10.1038/nrd2637.
- Basu A, Haldar S. 1998.** The relationship between Bcl2, Bax and p53: consequences for cell cycle progression and cell death. *Molecular Human Reproduction* 4:1099–1109 DOI 10.1093/molehr/4.12.1099.
- Baust JG, Dayong G, Baust JM. 2009.** Cryopreservation, an emerging paradigm of change. *Organogenesis* 5:90–96 DOI 10.4161/org.5.3.10021.
- Baust JM, Van Buskirk R, Baust JG. 1998.** Cryopreservation outcome is enhanced by intracellular-type medium and inhibition of apoptosis. *Cryobiology* 37:410–411.
- Beere HM, Wolf BB, Cain K, Mosser DD, Mahboubi A, Kuwana T, Tailor P, Morimoto RI, Cohen GM, Green DR. 2000.** Heat-shock protein 70 inhibits apoptosis by preventing recruitment of procaspase-9 to the Apaf-1apoptome. *Nature Cell Biology* 2:469–475 DOI 10.1038/35019501.
- Block W. 1982.** Cold hardiness in invertebrates poikilotherms. *Comparative Biochemistry Physiology A* 73: 581–293.
- Bouvard V, Zaitchouk T, Vacher M, Duthu A, Canivet M, Choisy-Rossi C, Nieruchalski M, May E. 2000.** Tissue and cell-specific expression of the p53-target genes: Bax, Fas, Mdm2 and Waf1/p21, before and following ionising irradiation in mice. *Oncogene* 19:649–660 DOI 10.1038/sj.onc.1203366.
- Chen Z, Pervaiz S. 2007.** Bcl-2 induces pro-oxidant state by engaging mitochondrial respiration in tumor cells. *Cell Death and Differentiation* 14:1617–1627 DOI 10.1038/sj.cdd.4402165.
- Chen J, Yuan L, Sun M, Zhang L, Zhang S. 2008.** Screening of hibernation-related genes in the brain of *Rhinolophus ferrumequinum* during hibernation. *Comparative Biochemistry and Physiology B: Biochemistry and Molecular Biology* 149:388–393.
- Chittenden T, Flamington C, Houghton AB, Ebb RG, Gallo GJ, Elangovan B, Chinnadurai G, Lutz RJ. 1995.** A conserved domain in Bak, distinct from BH1 and BH2 mediates cell death and protein binding functions. *The EMBO Journal* 14:5589–5596.
- Cowan KJ, Storey KB. 2001.** Freeze-thaw effects on metabolic enzymes in wood frog organs. *Cryobiology* 43:32–458 DOI 10.1006/cryo.2001.2338.
- Cowan KJ, Storey KB. 2003.** Mitogen-activated protein kinases: new signaling pathways functioning in cellular responses to environmental stress. *Journal of Experimental Biology* 206:1107–1115 DOI 10.1242/jeb.00220.

- Dawson NJ, Katzenback BA, Storey KB. 2015.** Free-radical first responders: the characterization of CuZnSOD and MnSOD regulation during freezing of the freeze-tolerant North American wood frog, *Rana sylvatica*. *Biochimica et Biophysica Acta* **1850**:97–106 DOI [10.1016/j.bbagen.2014.10.003](https://doi.org/10.1016/j.bbagen.2014.10.003).
- Deng X, Gao F, Flagg T, May WS. 2003.** Mono- and multisite phosphorylation enhances Bcl2's antiapoptotic function and inhibition of cell cycle entry functions. *Proceedings of the National Academy of Sciences of the United States of America* **101**:153–158.
- Deveraux QL, Reed JC. 1999.** IAP family proteins- suppressors of apoptosis. *Genes and Development* **13**(3):239–252.
- Ding J, Mooers BH, Zhang Z, Kale J, Falcone D, McNichol J, Huang B, Zhang XC, Xing C, Andrews DW, Lin J. 2014.** After embedding in membranes antiapoptotic Bcl-XL protein binds both Bcl-2 homology region 3 and helix 1 of proapoptotic Bax protein to inhibit apoptotic mitochondrial permeabilization. *The Journal of Biological Chemistry* **289**:11873–11896 DOI [10.1074/jbc.M114.552562](https://doi.org/10.1074/jbc.M114.552562).
- Dong Z, Venkatachalam MA, Wang J, Patel Y, Saikumar P, Semenza GL, Force T, Nichiyanna J. 2001.** Upregulation of apoptosis in inhibitory protein IAP-2 by hypoxia. Hif-1 independent mechanisms. *Journal of Biological Chemistry* **276**:18702–18709 DOI [10.1074/jbc.M011774200](https://doi.org/10.1074/jbc.M011774200).
- Dong Z, Wang JZ, Venkatachalam MA. 2003.** Apoptosis-resistance of hypoxic cells: multiple factors involved and a role for IAP-2. *American Journal of Pathology* **163**:663–671 DOI [10.1016/S0002-9440\(10\)63693-0](https://doi.org/10.1016/S0002-9440(10)63693-0).
- Elmore S. 2007.** Apoptosis: a review of programmed cell death. *Toxicologic Pathology* **35**:495–516 DOI [10.1080/01926230701320337](https://doi.org/10.1080/01926230701320337).
- Garrido C, Bruey JM, Fromentin A, Hammann A, Arrigo AP, Solary E. 1999.** HSP27 inhibits cytochrome c-dependent activation of procaspase-9. *The FASEB Journal* **14**:2061–2070.
- Gorman AM, Szegezdi E, Quigney DJ, Samali A. 2005.** Hsp27 inhibits 6-hydroxydopamine induced cytochrome c release and apoptosis in PC12 cells. *Biochemical and Biophysical Research Communications* **327**:801–810 DOI [10.1016/j.bbrc.2004.12.066](https://doi.org/10.1016/j.bbrc.2004.12.066).
- Gupta S, Knowlton AA. 2002.** Cytosolic Heat Shock Protein 60, Hypoxia, and Apoptosis. *Circulation* **106**:2727–2733 DOI [10.1161/01.CIR.0000038112.64503.6E](https://doi.org/10.1161/01.CIR.0000038112.64503.6E).
- Hamanaka R, Bobrovnikova-Marjon E, Ji X, Liebhaber S, Diehl J. 2009.** PERK-dependent regulation of IAP translation during ER stress. *Oncogene* **28**:910–920 DOI [10.1038/onc.2008.428](https://doi.org/10.1038/onc.2008.428).
- Hochachka PW. 1986.** Defense strategies against hypoxia and hypothermia. *Science* **231**:234–241 DOI [10.1126/science.2417316](https://doi.org/10.1126/science.2417316).
- Hockenbery DM, Oltvai ZN, Yin X, Millman CL, Korsmeyer SJ. 1993.** Bcl-2 functions in an antioxidant pathway to prevent apoptosis. *Cell* **75**:241–251 DOI [10.1016/0092-8674\(93\)80066-N](https://doi.org/10.1016/0092-8674(93)80066-N).
- Holden CP, Storey KB. 1997.** Second messenger and cAMP-dependent protein kinase responses to dehydration and anoxia stresses in frogs. *Journal of Comparative Physiology B* **167**:305–312 DOI [10.1007/s003600050078](https://doi.org/10.1007/s003600050078).

- Ito T, Deng X, Carr B, May WS. 1997. Bcl-2 phosphorylation required for anti-apoptosis function. *The Journal of Biological Chemistry* 272:11671–11673 DOI 10.1074/jbc.272.18.11671.
- Joanisse DR, Storey KB. 1996. Oxidative damage and antioxidants in *Rana sylvatica*, the freeze tolerant wood frog. *American Journal of Physiology* 271:R545–R553.
- Kane DJ, Sarafin TA, Auton S. 1993. Bcl-2 inhibition of neural cell death, decreased generation of reactive oxygen species. *Science* 262:1274–1277 DOI 10.1126/science.8235659.
- Kerr JFR, Wyllie AH, Currie R. 1972. Apoptosis: a basic biological phenomenon with wide-ranging implications in tissue kinetics. *British Journal of Cancer* 26:239–258 DOI 10.1038/bjc.1972.33.
- Kling KB, Costanzo JP, Lee RE. 1994. Post-freeze recovery of peripheral nerve function in the freeze-tolerant wood frog, *Rana sylvatica*. *Journal of Comparative Physiology B* 164:316–320 DOI 10.1007/BF00346449.
- Kluck RM, Bossy-Wetzel E, Green DR, Newmeyer DD. 1997. The release of cytochrome c from mitochondria, a primary site for Bcl-2 regulation of apoptosis. *Science* 275:1132–1136 DOI 10.1126/science.275.5303.1132.
- Ko LJ, Prives C. 1996. p53: puzzle and paradigm. *Genes and Development* 10:1054–1072 DOI 10.1101/gad.10.9.1054.
- Kodama T, Hikita H, Kawaguchi T, Shigekawa M, Shimizu S, Hayashi Y, Li W, Miyagi T, Hosui A, Tatsumi T, Kanto T, Hiramatsu N, Kiyomizu K, Tadokoro S, Tomiyama Y, Hayashi N, Takehara T. 2012. Mcl-1 and Bcl-xL regulate Bak/Bax-dependent apoptosis of the megakaryocytic lineage at multistages. *Cell Death and Differentiation* 19(11):1856–1869.
- Krivoruchko A, Storey KB. 2010. Regulation of the heat shock response under anoxia in the turtle, *Trachemys scripta elegans*. *Journal of Comparative Physiology B* 180:403–414 DOI 10.1007/s00360-009-0414-9.
- Krivoruchko A, Storey KB. 2015. Turtle anoxia tolerance: biochemistry and gene regulation. *Biochimica et Biophysica Acta* 1850:1188–1196 DOI 10.1016/j.bbagen.2015.02.001.
- Lam M, Dubyak G, Chen L, Nuñez G, Miesfeld RL, Distelhorst CW. 1994. Evidence that Bcl2 represses apoptosis by regulation endoplasmic reticulum-associated Ca^{2+} fluxes. *Proceedings of the National Academy of Sciences of the United States of America* 91:6569–6573 DOI 10.1073/pnas.91.14.6569.
- Layne LR, First MC. 1991. Resumption of physiological functions in the wood frog (*Rana sylvatica*) after freezing. *American Journal of Physiology* 261:R134–R137.
- Levine AJ. 1997. p53, the cellular gatekeeper for growth and division. *Cell* 88(3):323–331 DOI 10.1016/S0092-8674(00)81871-1.
- Liu X, Kim CN, Yang J, Jemmerson R, Wang X. 1996. Induction of apoptotic program in cell free extract, requirement for dATP and cytochrome C. *Cell* 86:147–157 DOI 10.1016/S0092-8674(00)80085-9.
- McNally JD, Sturgeon CM, Storey KB. 2003. Freeze-induced expression of a novel gene, *fr47*, in the liver of the freeze-tolerant wood frog, *Rana sylvatica*. *Biochimica et Biophysica Acta* 1625:183–191 DOI 10.1016/S0167-4781(02)00603-6.

- McNally JD, Wu SB, Sturgeon CM, Storey KB. 2002. Identification and characterization of a novel freezing-inducible gene, *Ill16*, in the wood frog *Rana sylvatica*. *The FASEB Journal* 16:902–904.
- Minn AJ, Vélez P, Schendel SL, Liang H, Muchmore SW, Fesik SW, Fill M, Thompson CB. 1997. Bcl-xL forms an ion channel in synthetic lipid membranes. *Nature* 385:353–357 DOI 10.1038/385353a0.
- Murphy DJ. 1983. Freezing resistance in intertidal invertebrates. *Annual Review in Physiology* 45:289–299 DOI 10.1146/annurev.ph.45.030183.001445.
- Oda K, Arakawa H, Tanaka T, Matsuda K, Tanikawa C, Mori T, Nishimori H, Tamai K, Tokino T, Nakamura Y, Taya Y. 2000. P53AIP1, a potential mediator of p53-dependent apoptosis, and its regulation by Ser-46 Phosphorylated p53. *Cell* 102:849–862 DOI 10.1016/S0092-8674(00)00073-8.
- Oren M. 1994. Relationship of p53 to the control of apoptotic cell death. *Article in Seminars in Cancer Biology* 5(3):221–227.
- Pandey P, Saleh A, Nakazawa A, Kumar S, Srinivasula SM, Kumar V, Weichselbaum R, Nalin C, Alnemri ES, Kufe D, Kharbanda S. 2000. Negative regulation of cytochrome c-mediated oligomerization of Apaf-1 and activation of procaspase-9 by heat shock protein 90. *The EMBO Journal* 19:4310–4322 DOI 10.1093/emboj/19.16.4310.
- Reed JC. 1997. Double identity for proteins of the Bcl2 family. *Nature* 387:773–776.
- Ring RA. 1980. Insects and their cells. In: Ashwood-Smith MJ, Pitman FJ, eds. *Low temperature preservation in medicine and biology*. Turnbridge Wells: Medical Publishing Co, 187–217.
- Rouble AN, Hefler J, Mamady H, Storey KB, Tessier SN. 2013. Anti-apoptotic signaling as a cytoprotective mechanism in mammalian hibernation. *PeerJ* 1:e29 DOI 10.7717/peerj.29.
- Rubinsky B, Lee CY, Bastacky J, Onik J. 1987. The process of freezing and the mechanism of damage during hepatic cryosurgery. *Cryobiology* 27:85–97.
- Schuler M, Green DR. 2001. Mechanisms of p53-dependent apoptosis. *Biochemical Society Transactions* 29:684–687 DOI 10.1042/bst0290684.
- Sedlak TW, Oltvai ZN, Yang E, Wang K, Boise LH, Thompson CB, Korsmeyer SJ. 1995. Multiple Bcl-2 family members demonstrate selective dimerizations with Bax. *Proceedings of the National Academy of Sciences of the United States of America* 92:7834–7838 DOI 10.1073/pnas.92.17.7834.
- Storey KB. 2004. Strategies for exploration of freeze responsive gene expression: advances in vertebrate freeze tolerance. *Cryobiology* 48:134–145 DOI 10.1016/j.cryobiol.2003.10.008.
- Storey KB, Bischof J, Rubinsky B. 1992. Cryomicroscopic analysis of freezing in liver of the freeze tolerant wood frog. *American Journal of Physiology* 263:R185–R194.
- Storey KB, Mommsen TP. 1994. Effects of temperature and freezing on hepatocytes isolated from a freeze-tolerant frog. *American Journal of Physiology* 266:R1477–R1482.

- Storey KB, Storey JM. 1984.** Biochemical adaptation for freezing tolerance in the wood frog, *Rana sylvatica*. *Journal of Comparative Physiology B* **155**:29–36 DOI [10.1007/BF00688788](https://doi.org/10.1007/BF00688788).
- Storey JM, Storey KB. 1985.** Triggering of cryoprotectant synthesis by the initiation of ice nucleation in the freeze tolerant frog, *Rana sylvatica*. *Journal of Comparative Physiology B* **156**:191–195 DOI [10.1007/BF00695773](https://doi.org/10.1007/BF00695773).
- Storey KB, Storey JM. 1986.** Freeze tolerant frogs: cryoprotectants and tissue metabolism during freeze/thaw cycles. *Canadian Journal of Zoology* **64**:49–56 DOI [10.1139/z86-008](https://doi.org/10.1139/z86-008).
- Storey KB, Storey JM. 1988.** Freeze tolerance: constraining forces, adaptive mechanisms. *Canadian Journal of Zoology* **66**:1122–1127 DOI [10.1139/z88-164](https://doi.org/10.1139/z88-164).
- Storey KB, Storey JM. 1990.** Metabolic rate depression and biochemical adaptation in anaerobiosis, hibernation, and estivation. *The Quarterly Review of Biology* **65.2**:145–174.
- Storey KB, Storey JM. 1996.** Beta-adrenergic, hormonal, and nervous influences on cryoprotectant synthesis by liver of the freeze tolerant wood frog *Rana sylvatica*. *Cryobiology* **33**:186–195 DOI [10.1006/cryo.1996.0019](https://doi.org/10.1006/cryo.1996.0019).
- Storey KB, Storey JM. 2004a.** Physiology, biochemistry and molecular biology of vertebrate freeze tolerance: the wood frog. In: Benson E, Fuller B, Lane N, eds. *Life in the Frozen State*. Boca Raton. Washington D.C.: CRC Press, 243–274.
- Storey KB, Storey JM. 2004b.** Metabolic rate depression in animals: transcriptional and translational controls. *Biological Reviews of the Cambridge Philosophical Society* **79**:207–233 DOI [10.1017/S1464793103006195](https://doi.org/10.1017/S1464793103006195).
- Storey KB, Storey JM. 2011.** Heat shock proteins and hypometabolism: adaptive strategy for proteome preservation. *Research and Reports in Biology* **2011**:57–68 DOI [10.2147/RRB.S13351](https://doi.org/10.2147/RRB.S13351).
- Sullivan KJ, Biggar KK, Storey KB. 2015a.** Expression and Characterization of the novel gene *fr47* during freezing in the wood frog, *Rana sylvatica*. *Biochemistry Research International* **2015**:1–8 DOI [10.1155/2015/363912](https://doi.org/10.1155/2015/363912).
- Sullivan KJ, Biggar KK, Storey KB. 2015b.** Transcript expression of the freeze responsive gene *fr10* in *Rana sylvatica* during freezing, anoxia, dehydration, and development. *Molecular Cell Biochemistry* **399**:17–25 DOI [10.1007/s11010-014-2226-9](https://doi.org/10.1007/s11010-014-2226-9).
- Vousden KH, Lu X. 2002.** Live or let die: the cell's response to p53. *Nature Reviews* **2**:594–604.
- Wang J, Biju MP, Wang M, Haase VH, Dong Z. 2006.** Cytoprotective effects of hypoxia against Cisplatin-induced tubular cell apoptosis: involvement of mitochondrial inhibition of p53 suppression. *Journal of American Society of Nephrology* **17**:1875–1885 DOI [10.1681/ASN.2005121371](https://doi.org/10.1681/ASN.2005121371).
- Wolff S, Erster S, Palacio G, Moll UM. 2008.** p53's mitochondrial translocation and MOMP action is independent of Puma and Bax and severely disrupts mitochondrial membrane integrity. *Cell Research* **18**:733–744 DOI [10.1038/cr.2008.62](https://doi.org/10.1038/cr.2008.62).

- Xu X-P, Kim E, Swift M, Reed JC, Volkmann N, Hanein D. 2013.** Three-dimensional structure of Bax-mediated pores in membrane bilayers. *Cell Death & Disease* **4(6):**e683.
- Yang E, Zha J, Jockel J, Boise LH, Thompson CB, Korsmeyer SJ. 1995.** Bad, a heterodimeric partner for Bcl-XL and Bcl-2, displaces Bax and promotes cell death. *Cell* **80(2):**285–291.
- Zhang J, Storey KB. 2012.** Cell cycle regulation in the freeze tolerant wood frog, *Rana sylvatica*. *Cell Cycle* **11:**1727–1742 DOI [10.4161/cc.19880](https://doi.org/10.4161/cc.19880).
- Zhang J, Storey KB. 2013.** Akt signaling and freezing survival in the wood frog, *Rana sylvatica*. *Biochimica et Biophysica Acta* **1830:**4828–4837 DOI [10.1016/j.bbagen.2013.06.020](https://doi.org/10.1016/j.bbagen.2013.06.020).