

Smoking history and emphysema in asthma–COPD overlap

Kazuyoshi Kurashima¹

Yotaro Takaku¹

Chie Ohta¹

Noboru Takayanagi¹

Tsutomu Yanagisawa¹

Tetsu Kanauchi²

Osamu Takahashi³

¹Department of Respiratory Medicine,

²Department of Radiology, Saitama

Cardiovascular and Respiratory

Center, Kumagaya, ³Center for Clinical

Epidemiology, St Luke's International

Hospital, Tokyo, Japan

Background: Emphysema is a distinct feature for classifying COPD, and smoking history (≥ 10 pack-years) is one of several newly proposed criteria for asthma–COPD overlap (ACO). We studied whether or not a smoking history (≥ 10 pack-years) and emphysema are useful markers for classifying ACO and differentiating it from asthma with chronic airflow obstruction (CAO).

Methods: We retrospectively studied the mortalities and frequencies of exacerbation in 256 consecutive patients with ACO (161 with emphysema and 95 without emphysema) who had ≥ 10 pack-years smoking history, 64 asthma patients with CAO but less of a smoking history (< 10 pack-years) and 537 consecutive patients with COPD (452 with emphysema and 85 without emphysema) from 2000 to 2016. In the patients with emergent admission, the causes were classified into COPD exacerbation, asthma attack, and others.

Results: No asthma patients with CAO had emphysema according to computed tomography findings. The prognoses were significantly better in patients with asthma and CAO than in those with ACO and COPD and better in those with ACO than in those with COPD. In both ACO and COPD patients, the prognoses were better in patients without emphysema than in those with it ($P=0.027$ and $P=0.023$, respectively). The frequencies of emergent admission were higher in COPD patients than in ACO patients, and higher in patients with emphysema than in patients without emphysema. ACO/emphysema (+) patients experienced more frequent admission due to COPD exacerbation ($P<0.001$), while ACO/emphysema (–) patients experienced more frequent admission due to asthma attack ($P=0.014$).

Conclusion: A smoking history (≥ 10 pack-years) was found to be a useful marker for differentiating ACO and asthma with CAO, and emphysema was a useful marker for classifying ACO. These markers are useful for predicting the overall survival and frequency of exacerbation.

Keywords: asthma, COPD, emphysema, exacerbation, ACO, prognosis

Introduction

Among the patients with chronic airflow obstruction (CAO), concurrent asthma and COPD is common with a reported prevalence rate between 15% and 55% among COPD patients.^{1–3} This wide range of prevalence rates largely stems from the diagnostic criteria for overlap syndrome. A joint project of the Global Initiative for Asthma (GINA) and Global Initiative for Chronic Obstructive Lung Disease (GOLD) addressed the diagnostic approach for asthma–COPD overlap (ACO), previously known as asthma–COPD overlap syndrome (ACOS).⁴ However, the GINA/GOLD guidelines addressed only the clinical description, not the definition, and in real-world practice, it is difficult to differentiate whether CAO in patients with asthma is the result of airway remodeling from asthma or the effect of concurrent smoking.

The original definition of ACOS reported by Gibson and Simpson was “increased variability of airflow and incompletely reversible airflow limitation”,⁵ implying that

Correspondence: Kazuyoshi Kurashima
Department of Respiratory Medicine,
Saitama Cardiovascular and Respiratory
Center, Itai 1696, Kumagaya, Saitama
360-0105, Japan
Tel/fax +81 49 223 8638
Email kurashima.kazuyoshi@pref.
saitama.lg.jp

all cases of asthma with CAO are ACOS. Recently, a global expert panel discussion proposed new consensus criteria for ACO including a smoking history of ≥ 10 pack-years as a major criterion.⁶ According to the proposed criteria, asthma patients with CAO but less of a smoking history are excluded from ACO in areas where air pollution is not a potential etiology of COPD. However, whether or not a smoking history of ≥ 10 pack-years is a suitable marker for the diagnosis of ACO has yet to be examined.

Until inhaled corticosteroids (ICS) became widely used, the coexistence of uncontrolled asthma and COPD was associated with more frequent exacerbations,⁷ a worse prognosis^{8,9} and a greater decline of FEV₁ than COPD without asthma.^{10,11} However, recent studies have suggested that ACO includes mild-to-moderate disease with a better prognosis than COPD,^{12,13} and the GINA/GOLD guideline⁴ states that exacerbation in ACO can be reduced by treatment.

Starting from 2000, we observed all consecutive patients with CAO who were able to undergo full examinations by specialists for COPD, asthma and other airway diseases. From 2000 to 2011, we initially recruited 1,960 consecutive patients with not-fully-reversible airflow obstruction.¹² CAO was confirmed by spirometry every 1 or 2 years. For a differential diagnosis, all patients were evaluated by high-resolution computed tomography (HRCT) at the start of the observation. In this study, we further followed up their clinical records until June 2016, and investigated whether or not a smoking history of ≥ 10 pack-years is a useful marker for differentiating ACO and asthma with CAO and whether computed tomography (CT)-diagnosed emphysema is a useful marker for subclassifying ACO in terms of mortality and exacerbation. As a reference, we also compared the mortality and exacerbation between ACO and COPD.

Methods

Study subjects

We reviewed 857 consecutive patients ≥ 40 years of age with CAO (537 patients with COPD, 256 patients with ACO and 64 asthma patients with CAO) who presented to the Saitama Cardiovascular and Respiratory Center (a tertiary referral center with 155 beds for respiratory disease) in Saitama, Japan. CAO was defined as post-bronchodilator FEV₁/FVC < 0.7 throughout the observation period.

Study design

This was a retrospective observational cohort study in which clinical data were collected from medical records. ACO was defined according to the global expert panel consensus criteria⁶ with mild modification including all three major

criteria: 1) CAO in individuals ≥ 40 years of age, 2) a smoking history of ≥ 10 pack-years, 3) a documented history of asthma and at least one minor criterion: (1) a documented history of atopy or allergic rhinitis, 2) a bronchodilator response of FEV₁ ≥ 200 mL and 12% from baseline values using salbutamol, and 3) peripheral blood eosinophil count > 300 cells/ μ L). In this study, the asthma history at any age was accepted because asthma features are not specific and the first asthma event is often difficult to define.⁴

COPD was diagnosed as previously described:^{12,14} 1) a smoking history of ≥ 10 pack-years, 2) CAO in individuals ≥ 40 years of age and 3) other respiratory diseases excluded.

The entry criteria of asthma with CAO were as follows: 1) CAO in individuals ≥ 40 years of age and 2) a documented history of asthma and at least one minor criterion (a documented history of atopy or allergic rhinitis, or a bronchodilator response of FEV₁ ≥ 200 mL and 12% from baseline values using salbutamol or peripheral blood eosinophil count > 300 cells/ μ L).

HRCT was performed at the start of the observation, and the presence of emphysema was determined by two radiologists. In a previous study,¹² the observation period ended at March 1, 2012, but the subjects continued to be monitored and recorded. In this study, the cohort was followed up until June 30, 2016. The group of asthma patients with CAO in a previous study¹² was newly classified as patients with ACO and asthma with CAO with or without 10-pack-year smoking history. The patients who could not be followed up for > 1 year were excluded in order to evaluate the annual exacerbation rate. Subjective symptoms, prescription history, laboratory data and visiting history were monitored. This study was approved by the institutional review board of Saitama Cardiovascular and Respiratory Center (No 2012001). General prior consent to review their medical records was obtained from patients at the first visit to the hospital. No further consent was required for this study.

Assessment of exacerbation

The histories of exacerbation were obtained from the medical records. Total exacerbation events were defined as the worsening or new onset of symptoms such as dyspnea, cough, sputum, fever, or wheezing that required a prescription change.¹⁵ Such symptoms can be observed by respiratory infections, worsening of asthma or other causes, such as heart failure, and precise differential diagnoses were sometimes difficult in ambulatory practice. However, in patients who required emergent admission, their history, physical examination findings, results of laboratory tests, HRCT findings

and response to the treatments were well preserved in the medical record. The cause of admission recorded by the doctor in charge was reevaluated and ultimately classified by two study pulmonologists. Radiology-proven pneumonia was not excluded from causes of COPD exacerbation in emergent admission because bronchopneumonia is often detected by HRCT even if the chest radiology findings are almost normal.

In ACO patients and asthma patients with CAO, admission with severe wheezing that required oral or parenteral corticosteroids was designated as an asthma attack, and admission with symptoms of airway infection, such as fever, absence of severe wheezing and increased serum C-reactive protein >1 mg/dL requiring antibiotics, was designated as COPD exacerbation according to the study criteria.

Statistical analyses

The baseline characteristics are represented as the mean \pm SD, median (interquartile range) or number (%), as appropriate. Differences among the groups were analyzed using the Mann–Whitney *U* test or chi-squared test. Subgroups were compared via an analysis of variance.

The survival in each subgroup was estimated by Kaplan–Meier analysis. Mortality rates were compared with a log-rank test and the Cox proportional hazards model. Time was defined from the initial examination until death. Censoring took place when participants were lost to follow-up or were still alive on June 30, 2016. A *P*-value of <0.05 was considered statistically significant. All data were analyzed using SPSS version 22 (IBM Corporation, Armonk, NY, USA).

Results

Patient characteristics

Demographic data of patients with ACO, COPD and asthma with CAO are shown in Tables 1 and 2. The median observation periods were 6.6, 8.3 and 9.2 years, respectively. Patients with ACO had a higher female ratio but a similar post-bronchodilator FEV₁ compared to COPD patients. All of the asthma patients with CAO (<10-pack-year smoking history) had post-bronchodilator FEV₁/FVC <0.7 throughout the observation period. Most of them had a long asthma history (14.1 \pm 12.1 years) at the start of observation. None of the patients with asthma with CAO had CT-diagnosed emphysema.

The annual decline rate in the post-bronchodilator FEV₁ was larger in ACO patients (–45 mL/year) than in COPD patients (–40 mL/year) and asthma patients with CAO (–25 mL/year). Among patients with COPD, emphysema (+) patients had a higher percentage of de novo malignant disease (*P*=0.006) but lower rates of complication with vascular disease (*P*=0.016) than emphysema (–) patients. In patients with ACO, similar tendencies were observed, but not to a significant degree.

Mortalities of the patients with ACO, COPD and asthma with CAO

Figure 1 shows the overall survival rates of the groups. Patients with asthma with CAO (<10-pack-year smoking history) had a better survival rate than those with ACO (*P*=0.020) or COPD (*P*<0.001) (Table 3).

Figure 2 shows the overall survival rates of the subgroups classified by the presence of CT-diagnosed emphysema.

Table 1 Characteristics of the subjects

| Characteristics | COPD N=537 | ACO N=256 | Asthma/CAO N=64 | P-value |
|--|---------------------------|---------------------------|--------------------------|---------|
| Age (years) | 69.4 \pm 7.8 | 66.5 \pm 8.3 | 63.7 \pm 9.5 | <0.0001 |
| Female sex | 21 (3.9%) | 33 (12.8%) | 37 (57.8%) | <0.0001 |
| Body mass index (kg/m ²) | 21.1 \pm 3.5 | 22.0 \pm 4.0 | 22.6 \pm 3.7 | <0.0001 |
| Never smoker | 0 | 0 | 59 (92.2%) | <0.0001 |
| Smoking index (pack-years) | 66.9 \pm 34.3 | 52.1 \pm 28.4 | 0.4 \pm 1.5 | <0.0001 |
| Post-bronchodilator FVC (% predicted) | 85.3 \pm 19.4 | 86.5 \pm 18.8 | 84.5 \pm 19.2 | NS |
| Post-bronchodilator FEV ₁ (% predicted) | 60.5 \pm 24.2 | 59.4 \pm 22.6 | 66.5 \pm 22.2 | NS |
| GOLD stage, 1/2/3/4 | 117/217/159/44 | 30/40/12/3 | 20/28/14/2 | 0.0045 |
| Post-bronchodilator FEV ₁ /FVC | 44.3 \pm 12.5 | 47.3 \pm 12.3 | 52.9 \pm 10.3 | <0.0001 |
| Reversibility of FEV ₁ (%) | 8.2 \pm 8.1 | 17.6 \pm 12.6 | 17.5 \pm 11.4 | <0.0001 |
| Annual change in FEV ₁ (mL/year) | –40.0 (–70.0 to –10.0) | –45.0 (–81.0 to –20.0) | –25.0 (–59.0 to 10.0) | 0.016 |
| Any vascular diseases | 115 (21.4%) | 46 (18.0%) | 12 (18.8%) | NS |
| De novo malignant tumor | 86 (16.0%) | 32 (12.5%) | 1 (1.6%) | 0.0051 |
| Observation period (years) | 6.6 (3.5–9.7) | 8.3 (5.1–11.8) | 9.2 (6.5–12.9) | NS |

Note: Data are shown as the mean \pm standard deviation, median (interquartile range), or number (%).

Abbreviations: ACO, asthma–COPD overlap; asthma/CAO, asthma with CAO; CAO, chronic airflow obstruction; GOLD, Global Initiative for Chronic Obstructive Lung Disease; NS, not significant.

Table 2 Characteristics of the subjects classified by emphysema

| Characteristics | COPD | | | ACO | | |
|--|------------------------|-----------------------|---------|------------------------|------------------------|---------|
| | With emphysema | Without emphysema | P-value | With emphysema | Without emphysema | P-value |
| | N=452 | N=85 | | N=161 | N=95 | |
| Age (years) | 69.2±7.9 | 70.2±7.3 | NS | 67.5±7.7 | 64.2±9.3 | 0.001 |
| Female sex | 14 (3.1%) | 7 (8.2%) | 0.034 | 18 (11.2%) | 15 (15.8%) | <0.001 |
| Body mass index (kg/m ²) | 20.8±3.5 | 22.6±2.8 | <0.001 | 21.4±4.1 | 23.0±3.7 | 0.005 |
| Never smoker | 0 | 0 | NS | 0 | 0 | NS |
| Smoking index (pack-years) | 68.7±35.3 | 57.0±26.8 | 0.002 | 60.6±28.9 | 37.7±20.6 | <0.001 |
| Post-bronchodilator FVC (% predicted) | 85.2±19.5 | 85.5±18.9 | NS | 85.9±19.3 | 87.6±18.1 | NS |
| Post-bronchodilator FEV ₁ (% predicted) | 58.5±24.3 | 70.6±21.8 | <0.001 | 55.3±21.6 | 66.2±22.7 | <0.001 |
| GOLD stage, 1/2/3/4 | 87/177/147/41 | 30/40/12/3 | 0.002 | 25/59/64/13 | 21/50/23/1 | NS |
| Post-bronchodilator FEV ₁ /FVC | 44.3±12.5 | 53.3±10.3 | <0.001 | 44.0±12.1 | 52.9±10.8 | <0.001 |
| Reversibility of FEV ₁ (%) | 8.2±8.2 | 8.2±7.9 | NS | 17.6±12.4 | 17.7±12.7 | NS |
| Annual change in FEV ₁ (mL/year) | -44.0 (-71.0 to -14.5) | -30.0 (-61.0 to 20.0) | 0.016 | -43.0 (-79.0 to -20.0) | -45.0 (-82.0 to -20.0) | NS |
| Any vascular diseases | 89 (19.7%) | 26 (30.6%) | 0.025 | 26 (16.1%) | 20 (21.1%) | NS |
| De novo malignant tumor | 81 (17.9%) | 5 (5.9%) | 0.006 | 24 (14.9%) | 8 (8.4%) | NS |
| Observation period (years) | 6.4 (3.4-9.5) | 7.2 (4.2-10.2) | NS | 8.1 (4.9-11.6) | 8.4 (5.5-12.6) | NS |

Note: Data are shown as the mean ± standard deviation, median (interquartile range), or number (%).

Abbreviations: ACO, asthma-COPD overlap; GOLD, Global Initiative for Chronic Obstructive Lung Disease; NS, not significant.

Among both ACO and COPD patients, the subgroups without emphysema had a better survival rate than did the subgroups with emphysema ($P=0.027$ and $P=0.023$, respectively) (Table 3).

Frequencies of exacerbation among subgroups

The frequencies of total exacerbation events were similar between the ACO and COPD patients (Figure S1). However, the frequency was lower in the COPD/emphysema (-) group than in the COPD/emphysema (+) group or ACO/emphysema

(+) group. There were no significant differences in the frequencies of emergency visits among the subgroups (Figure S2). Subgroups with emphysema had higher frequencies of total emergent admission than subgroups without emphysema ($P<0.001$, Figure 3). The frequencies of emergent admission due to COPD exacerbation were higher in COPD patients than in ACO patients ($P<0.001$) and higher in patients with emphysema than in patients without emphysema (Table 4). ACO/emphysema (+) patients experienced more frequent admission due to COPD exacerbation but less frequent admission due to asthma attack than ACO/emphysema (-) patients ($P<0.001$ and $P=0.014$, respectively) (Table 4 and Figure 4).

Discussion

The only difference in the entry criteria of this study between ACO patients and asthma patients with CAO was a 10-pack-year smoking history. Regardless, there were marked differences in the mortality and the nature of exacerbation that required emergent admission between these two patient groups. In addition, the rates of mortality and the frequency of severe exacerbation differed based on the presence of CT-diagnosed emphysema in ACO patients as well as in COPD patients. These results suggest that a 10-pack-year smoking history is a useful marker for differentiating ACO and asthma with CAO, and CT-diagnosed emphysema is a useful marker for classifying different phenotypes of ACO.

In 2000, we hypothesized that the differential diagnosis and longitudinal observation are important in the management

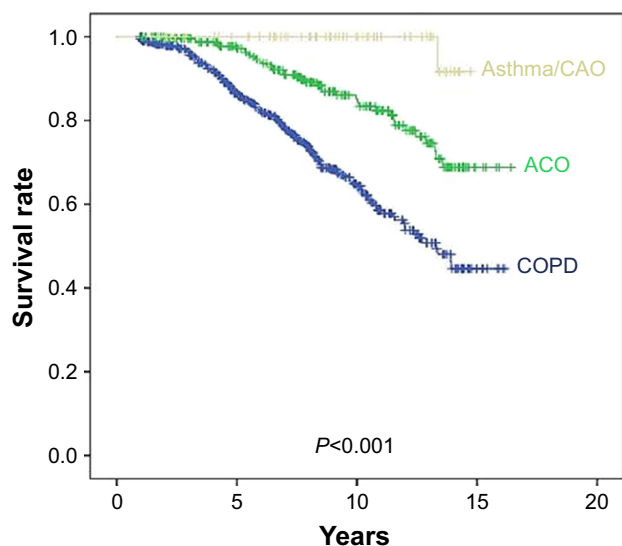


Figure 1 Kaplan-Meier survival curves for COPD, ACO, and asthma/CAO.

Abbreviations: ACO, asthma-COPD overlap; asthma/CAO, asthma with CAO; CAO, chronic airflow obstruction.

Table 3 Risk of all-cause mortality in asthma/CAO, ACO, and COPD

| Groups | Hazard ratio (95% CI) | P-value | Subgroups | Hazard ratio (95% CI) | P-value | Hazard ratio (95% CI) | P-value |
|--------------------------------------|-----------------------|---------|---------------------|-----------------------|---------|-----------------------|---------|
| Univariate analysis | | | | | | | |
| Asthma/CAO | 1.00 (reference) | | Asthma/CAO | 1.00 (reference) | | | |
| ACO | 10.64 (1.46–77.52) | 0.020 | ACO, emphysema (–) | 5.74 (0.72–45.88) | 0.099 | 1.00 (reference) | |
| COPD | 26.98 (3.77–192.91) | 0.001 | ACO, emphysema (+) | 13.79 (1.88–101.16) | 0.010 | 2.41 (1.11–5.26) | 0.027 |
| | | | COPD, emphysema (–) | 15.59 (2.06–118.01) | 0.008 | 1.00 (reference) | |
| | | | COPD, emphysema (+) | 29.55 (4.13–211.43) | 0.001 | 1.86 (1.09–3.18) | 0.023 |
| Adjusted for age, sex and BMI | | | | | | | |
| Asthma/CAO | 1.00 (reference) | | Asthma/CAO | 1.00 (reference) | | | |
| ACO | 7.26 (0.95–55.34) | 0.056 | ACO, emphysema (–) | 5.25 (0.63–43.47) | 0.125 | 1.00 (reference) | |
| COPD | 14.28 (1.88–108.56) | 0.010 | ACO, emphysema (+) | 10.02 (1.29–77.75) | 0.028 | 1.96 (0.88–4.33) | 0.098 |
| | | | COPD, emphysema (–) | 9.28 (1.163–73.98) | 0.036 | 1.00 (reference) | |
| | | | COPD, emphysema (+) | 18.71 (2.43–143.84) | 0.005 | 2.04 (1.18–3.53) | 0.011 |

Abbreviations: ACO, asthma–COPD overlap; asthma/CAO, asthma with CAO; BMI, body mass index; CAO, chronic airflow obstruction.

of patients with CAO and developed an algorithm for the diagnosis of COPD, asthma and other airway diseases with CAO.¹⁴ Fortunately, our approach and concept were very similar to the recent guideline of ACO⁴ identifying asthma features and repeated follow-up of post-bronchodilator FEV₁. However, until the publication of a recent consensus report in 2016,⁶ some patients with asthma/CAO and less of a smoking history risked being classified as having ACO because the GINA/GOLD guideline⁴ does not provide a clear cut-off value for the smoking history. Subjects with asthma/CAO can be clearly classified into ACO and asthma with airway remodeling groups according to the proposed consensus report.⁶

In previous reports, the coexistence of uncontrolled asthma and COPD was associated with more frequent exacerbation and worse prognosis than those observed in

COPD.^{5,7,8} However, the condition of ACO patients can be improved by ICS treatment,¹⁶ and after a long period of time, they become less symptomatic.⁴ In addition, growing evidence indicates that COPD patients with asthma features show a better prognosis and better response to ICS in terms of COPD exacerbation.^{17–22} In this study, all of the patients with ACO were treated with ICS and one or two long-acting bronchodilators (data not shown). In addition to the diagnostic algorithm for the patients with CAO,¹⁴ we started “COPD school” and “asthma school” for all asthma and COPD patients twice a year in 2000. Each school provides individual assistance regarding inhalation procedures, a rehabilitation class and other educational programs. Part of the programs for inhalation procedures was recently described in a report.²³ Therefore, the subjects observed in this study had received relatively good medical care from respiratory specialists.

One of the strengths of this study is that we recruited all consecutive patients with respiratory symptoms who underwent spirometry. Such an approach may be particularly important for the screening of less symptomatic patients who might be overlooked in a multicenter study. From 2000 to 2011, we screened 3,289 patients with FEV₁/FVC <0.7, and 1,960 of them had not-fully-reversible airflow limitation. However, 175 patients initially diagnosed as having asthma with not-fully-reversible airflow limitation were excluded through 2013, as their post-bronchodilator FEV₁/FVC became >0.7 after ICS and other treatments were introduced.

In a report of GINA/GOLD, CT-diagnosed emphysema is referred to as a marker for distinguishing asthma and COPD in specialized investigations;⁴ however, a recent study showed that a considerable portion of COPD patients were non-emphysema type.²⁴ The results of the present study suggest that emphysema is a good marker for classifying ACO

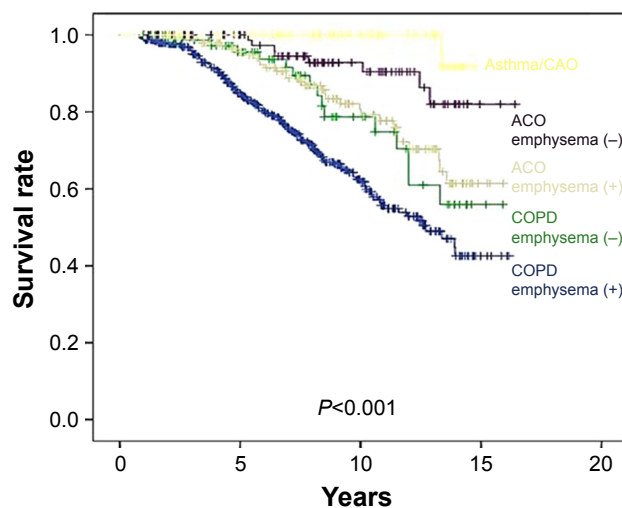


Figure 2 Kaplan–Meier survival curves for COPD, ACO, and asthma/CAO subclassified by the emphysema.

Abbreviations: ACO, asthma–COPD overlap; asthma/CAO, asthma with CAO; CAO, chronic airflow obstruction.

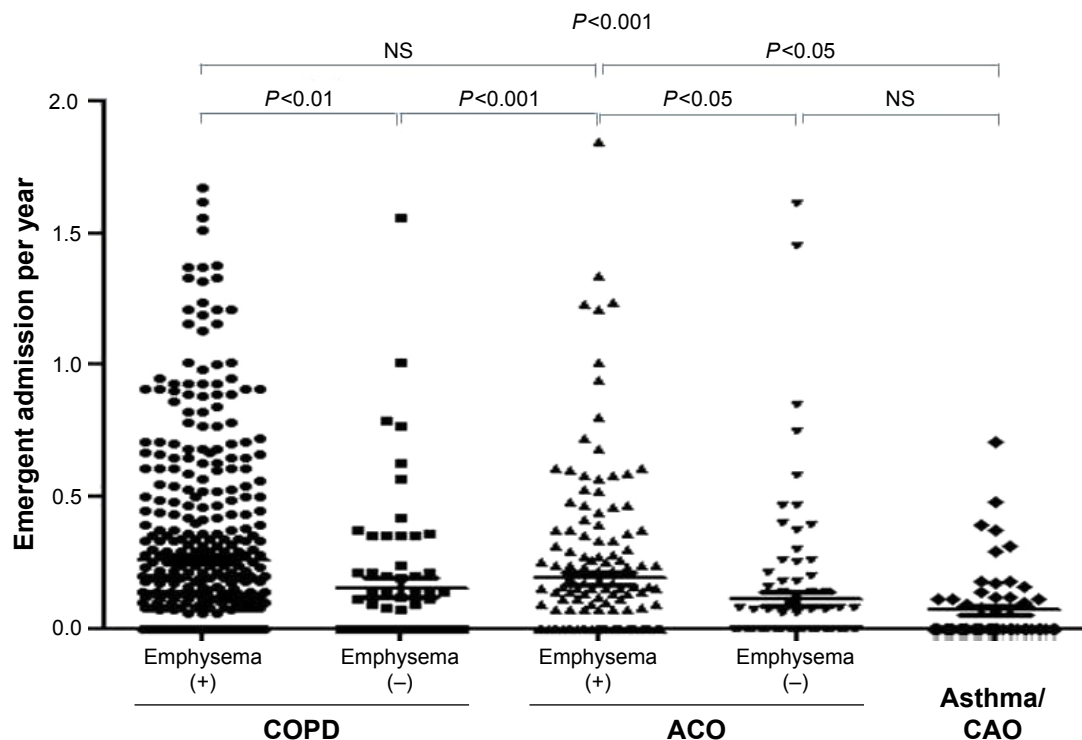


Figure 3 Frequencies of emergent admission in the subgroups of COPD, ACO, and asthma with CAO. **Abbreviations:** ACO, asthma–COPD overlap; asthma/CAO, asthma with CAO; CAO, chronic airflow obstruction; NS, not significant.

as well as COPD. We showed that ACO/emphysema (–) patients are more similar to asthma patients with CAO, and ACO/emphysema (+) patients are more similar to COPD patients in terms of the mortality and nature of exacerbation. As in previous studies,^{12,25–28} the present study showed that emphysema is a risk factor for de novo malignant tumor in patients with COPD.

To our knowledge, whether or not ACO patients experience more frequent COPD exacerbation or asthma attacks has been unclear. Although the differentiation of COPD exacerbation and asthma attack may be difficult, we tried to classify them using our study criteria in cases of admission.

In the present study, the records of physical findings, response to treatments, laboratory data and findings of HRCT were available in most cases of emergent admission. ACO/emphysema (+) patients experienced more frequent admission due to COPD exacerbation, while ACO/emphysema (–) patients experienced more frequent admission due to asthma attack. A prospective study will be needed to determine whether or not exacerbations in ACO patients influence their mortality and decline in FEV₁.

Several limitations associated with the present study warrant mention. First, we prospectively recruited patients with CAO, but this was a retrospective observational study,

Table 4 Causes of emergent admission

| Causes | COPD | | | ACO | | | COPD total | ACO total | Asthma/ CAO | P-value |
|---------------------------------------|----------------|-------------------|---------|----------------|-------------------|---------|------------|------------|-------------|---------|
| | With emphysema | Without emphysema | P-value | With emphysema | Without emphysema | P-value | | | | |
| COPD exacerbation, N (N/person, year) | 444 (0.20) | 56 (0.11) | 0.044 | 142 (0.13) | 23 (0.05) | <0.001 | 500 (0.18) | 165 (0.09) | 5 (0.01) | <0.001 |
| Asthma attack, N (N/person, year) | NA | NA | NA | 26 (0.02) | 32 (0.06) | 0.014 | NA | 58 (0.03) | 30 (0.04) | NA |
| Others, N (N/person, year) | 149 (0.07) | 23 (0.04) | NS | 30 (0.03) | 4 (0.01) | 0.019 | 172 (0.06) | 34 (0.02) | 4 (0.01) | <0.001 |

Note: In ACO patients and asthma/CAO patients, admission with severe wheezing that required oral or parenteral corticosteroids was designated as an asthma attack, and admission with symptoms of airway infection, such as a fever, absence of severe wheezing, and increased serum C-reactive protein > 1 mg/dL requiring antibiotics, was designated as COPD exacerbation according to the study criteria.

Abbreviations: ACO, asthma–COPD overlap; asthma/CAO, asthma with CAO; CAO, chronic airflow obstruction; NA, not applicable.

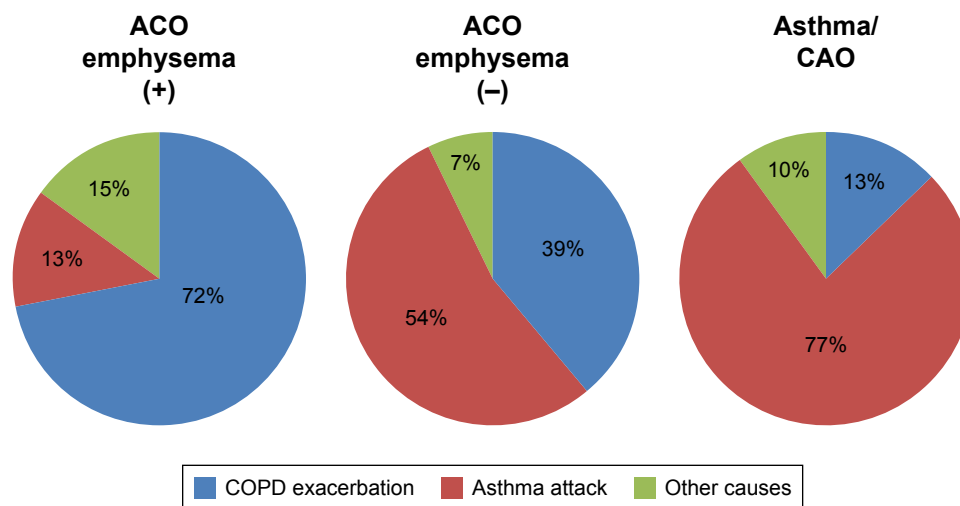


Figure 4 Causes of emergent admission in the subgroups of ACO and asthma/CAO.

Abbreviations: ACO, asthma–COPD overlap; asthma/CAO, asthma with CAO; CAO, chronic airflow obstruction.

so some clinical data were not available. Some exacerbations may not have been documented in the records of our hospital. However, our hospital is the only respiratory center in the area, so we believe that most of the episodes that required emergent admission were properly recorded. The symptoms of wheezing, cough and chronic expectoration and smoking history were recorded by the paramedical staff at the annual pulmonary function tests in our clinic. We considered these data taken by the paramedical staff useful for strengthening the records of wheezing and smoking history taken by the doctors. Second, the female ratio in patients with COPD and ACO was very low in this study. However, this ratio accords with those in previous studies in Japan¹⁷ and reflects the low smoking rate in Japanese women.²⁹ Third, treatments for COPD and ACO dramatically progressed from 2000 to 2016, but we tallied the number of exacerbations for the total period. Finally, the patients' background characteristics likely vary considerably among countries due to differences in pollution exposure (eg, biomass) and comorbidities of COPD. In Japan, the air pollution level is too low to count as an etiology of COPD,³⁰ and all patients with COPD had a significant smoking history in this study. Therefore, we considered asthma patients with CAO but a low smoking history not to be ACO under the proposed criteria. The reported vascular diseases as a comorbidity of COPD are markedly lower in Japan than in other countries,^{31–33} and the data of this study were consistent with those of a recent study in Japan.³¹

Conclusion

A smoking history of 10 pack-years is a useful cut-off value for differentiating ACO and asthma with airway remodeling.

In addition, this study showed that airway-type ACO has more asthma features, while emphysema-type ACO has more COPD features. These markers are useful for predicting overall survival and frequency of exacerbation. Symptoms and airway obstruction of ACO could be improved by the treatments with ICS and long-acting bronchodilators; therefore, careful differential diagnosis and repeated evaluation are necessary for the recognition of ACO that might be treated as asthma or COPD.

Acknowledgment

The authors wish to thank the medical staff of Saitama Cardiovascular and Respiratory Center who cared for the patients.

Author contributions

All authors contributed toward data analysis, drafting and critically revising the paper, gave final approval of the version to be published, and agree to be accountable for all aspects of the work.

Disclosure

The authors report no conflicts of interest in this work.

References

1. Soriano JB, Davis KJ, Coleman B, Visick G, Mannino D, Pride NB. The proportional Venn diagram of obstructive lung disease: two approximations from the United States and the United Kingdom. *Chest*. 2003;124(2):474–481.
2. Marsh SE, Travers J, Weatherall M, et al. Proportional classifications of COPD phenotypes. *Thorax*. 2008;63(9):761–767.
3. Weatherall M, Travers J, Scirtcliffe PM, et al. Distinct clinical phenotypes of airways disease defined by cluster analysis. *Eur Respir J*. 2009;34(4):812–818.

4. Global Initiative for Asthma. Global strategy for asthma management and prevention. Updated 2017. Available from: <http://ginasthma.org/2017-gina-report-global-strategy-for-asthma-management-and-prevention/>. Accessed May 1, 2017.
5. Gibson PG, Simpson JL. The overlap syndrome of asthma and COPD: what are its features and how important is it? *Thorax*. 2009;64(8):728–735.
6. Sin DD, Miravittles M, Mannino DM, et al. What is asthma-COPD overlap syndrome? Towards a consensus definition from a round table discussion. *Eur Respir J*. 2016;48(3):664–673.
7. Hardin M, Silverman EK, Barr RG, et al; COPDGene Investigators. The clinical features of the overlap between COPD and asthma. *Respir Res*. 2011;12:127.
8. Meyer PA, Mannino DM, Redd SC, Olson DR. Characteristics of adults dying with COPD. *Chest*. 2002;122(6):2003–2008.
9. Hoppers JJ, Postma DS, Jijcken B, Weise ST, Schouten JP. Histamine airway hyper-responsiveness and mortality from chronic pulmonary disease: a cohort study. *Lancet*. 2000;356(9238):1313–1317.
10. Silva GE, Sherrill DL, Guerra S, Barbee RA. Asthma as a risk factor for COPD in a longitudinal study. *Chest*. 2004;126(1):59–65.
11. Tashkin DP, Altose MD, Connett JE, Kanner RE, Lee WW, Wise RA. Methacholine reactivity predicts changes in lung function over time in smokers with early chronic obstructive disease. The Lung Health Study Research Group. *Am J Respir Crit Care Med*. 1996;153(6 Pt 1):1802–1811.
12. Kurashima K, Fukuda C, Nakamoto K, et al. CT-diagnosed emphysema and prognosis of chronic airflow obstruction: a retrospective study. *BMJ Open*. 2013;3(11):e003541.
13. Cosio BG, Soriano JB, López-Campos JL, et al; CHAIN Study. Defining the asthma-COPD overlap syndrome in a COPD cohort. *Chest*. 2016;149(1):45–52.
14. Kurashima K, Takayanagi N, Sato N, et al. High resolution CT and bronchial reversibility test for diagnosing COPD. *Respirology*. 2005;10(3):316–322.
15. The Japanese Respiratory Society. *Guidelines for the Diagnosis and Treatment of COPD*. 3rd ed. Tokyo: Medical Review Co., Ltd; 2013.
16. Suzuki T, Tada Y, Kawata N, et al. Clinical, physiological, and radiological features of asthma-chronic obstructive pulmonary disease overlap syndrome. *Int J Chron Obstruct Pulmon Dis*. 2015;10:947–954.
17. Suzuki M, Makita H, Konno S, et al; Hokkaido COPD Cohort Study Investigators. Asthma-like features and clinical course of COPD: an analysis from the Hokkaido COPD Cohort Study. *Am J Respir Crit Care Med*. 2016;194(11):1358–1365.
18. Brightling CE, Monterio W, Ward R, et al. Sputum eosinophilia and short-term response to prednisolone in chronic obstructive pulmonary disease: a randomized controlled trial. *Lancet*. 2000;356(9240):1480–1485.
19. Brightling CE, McKenna S, Hargadon B, et al. Sputum eosinophilia and the short term response to inhaled mometasone in chronic obstructive pulmonary disease. *Thorax*. 2005;60(3):193–198.
20. Leigh R, Pizzichini MM, Morris MM, Maltais F, Hargreave FE, Pizzichini E. Stable COPD: predicting benefit from high-dose inhaled corticosteroid treatment. *Eur Respir J*. 2006;27(5):964–971.
21. Fattahi F, ten Hacken NH, Löfdahl CG, et al. Atopy is a risk factor for respiratory symptoms in COPD patients: results from the EUROSCOP study. *Respir Res*. 2013;14:10.
22. Pascoe S, Locantore N, Dransfield MT, Barnes NC, Pavord ID. Blood eosinophil counts, exacerbations, and response to the addition of inhaled fluticasone furoate to vilanterol in patients with chronic obstructive pulmonary disease: a secondary analysis of data from two parallel randomized controlled trials. *Lancet Respir Med*. 2015;3(6):435–442.
23. Takaku Y, Kurashima K, Ohta C, et al. How many instructions are required to correct inhalation errors in patients with asthma and chronic obstructive pulmonary disease? *Respir Med*. 2017;123:110–115.
24. Bhatt SP, Sieren JC, Dransfield MT, et al; COPDGene Investigators. Comparison of spirometric thresholds in diagnosing smoking related airflow obstruction. *Thorax*. 2014;69(5):409–414.
25. Sanchez-Salcedo P, Zulueta JJ. Lung cancer in chronic obstructive pulmonary disease patients, it is not just the cigarette smoke. *Curr Opin Pulm Med*. 2016;22(4):344–349.
26. Oelsner EC, Carr JJ, Enright PL, et al. Per cent emphysema is associated with respiratory and lung cancer mortality in the general population: a cohort study. *Thorax*. 2016;71(7):624–632.
27. Henschke CI, Yip R, Boffetta P, et al; I-ELCAP Investigators. CT screening for lung cancer: importance of emphysema for never smokers and smokers. *Lung Cancer*. 2015;88(1):42–47.
28. Zaynagetdinov R, Sherrill TP, Gleaves LA, et al. Chronic NF- κ B activation links COPD and lung cancer through generation of an immunosuppressive microenvironment in the lungs. *Oncotarget*. 2016;7(5):5470–5482.
29. MacKenzie R, Eckhardt J, Prastyani AW. Japan tobacco international: to ‘be the most successful and respected tobacco company in the world’. *Glob Public Health*. 2017;12(3):281–299.
30. Sasaki H, Sekizawa K, Yanai M, Arai H, Yamaya M, Ohru T. Effects of air pollution and smoking on chronic obstructive pulmonary disease and bronchial asthma. *Tohoku J Exp Med*. 1998;186(3):151–167.
31. Chubachi S, Sato M, Kameyama N, et al; Keio COPD Comorbidity Research (K-CCR) Group. Identification of five clusters of comorbidities in a longitudinal Japanese chronic obstructive pulmonary disease cohort. *Respir Med*. 2016;117:272–279.
32. Bhatt SP, Wells JM, Kinney GL, et al; COPDGene Investigators. β -Blockers are associated with a reduction in COPD exacerbations. *Thorax*. 2016;71(1):8–14.
33. Laforest L, Roche N, Devouassoux G, et al. Frequency of comorbidities in chronic obstructive pulmonary disease, and impact on all-cause mortality: a population-base cohort study. *Respir Med*. 2016;117:33–39.

Supplementary materials

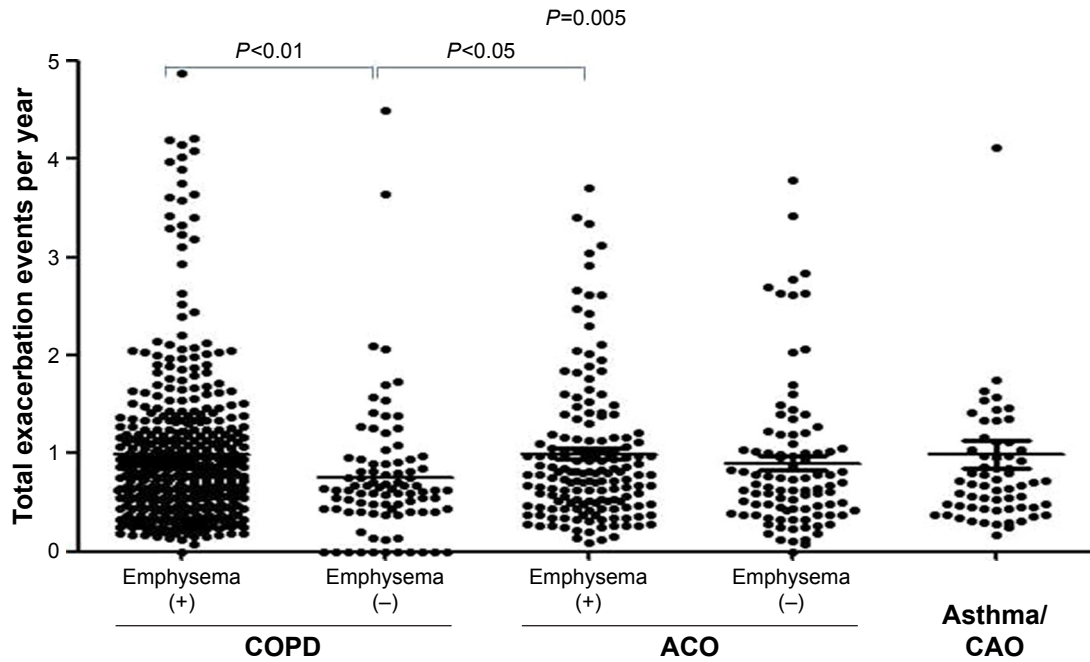


Figure S1 Frequencies of total exacerbation events in the subgroups of COPD, ACO, and asthma/CAO.
Abbreviations: ACO, asthma–COPD overlap; asthma/CAO, asthma with CAO; CAO, chronic airflow obstruction.

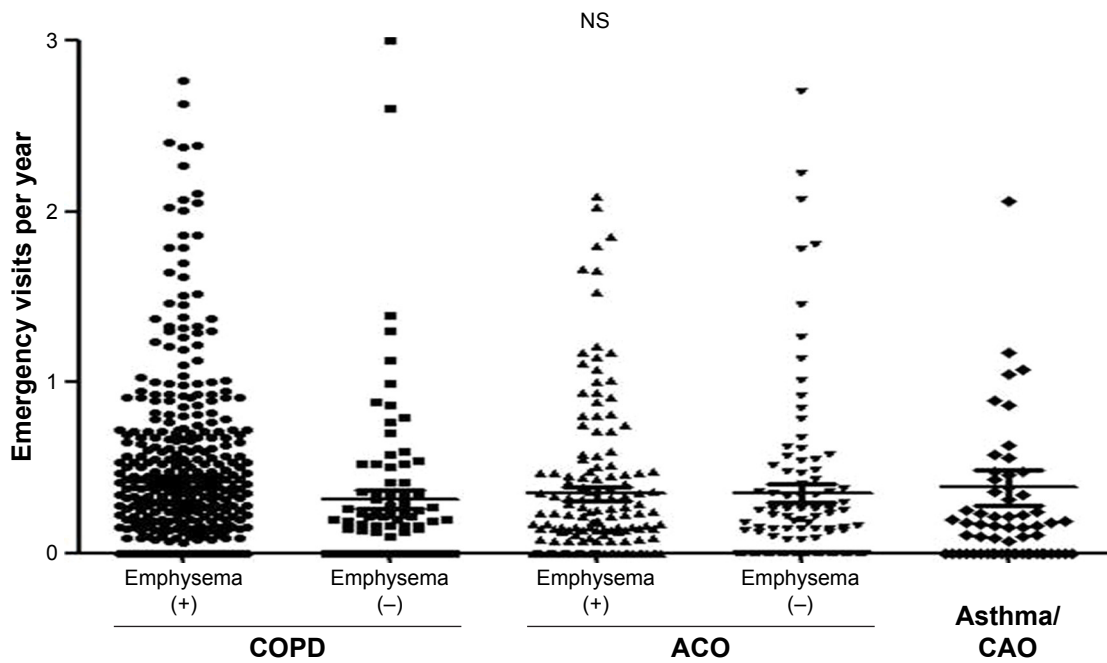


Figure S2 Frequencies of emergency visit in the subgroups of COPD, ACO, and asthma/CAO.
Abbreviations: ACO, asthma–COPD overlap; asthma/CAO, asthma with CAO; CAO, chronic airflow obstruction.

International Journal of COPD**Dovepress****Publish your work in this journal**

The International Journal of COPD is an international, peer-reviewed journal of therapeutics and pharmacology focusing on concise rapid reporting of clinical studies and reviews in COPD. Special focus is given to the pathophysiological processes underlying the disease, intervention programs, patient focused education, and self management protocols.

This journal is indexed on PubMed Central, MedLine and CAS. The manuscript management system is completely online and includes a very quick and fair peer-review system, which is all easy to use. Visit <http://www.dovepress.com/testimonials.php> to read real quotes from published authors.

Submit your manuscript here: <http://www.dovepress.com/international-journal-of-chronic-obstructive-pulmonary-disease-journal>