



OPEN

Stable isotope and chemical inhibition analyses suggested the existence of a non-mevalonate-like pathway in the yeast *Yarrowia lipolytica*

Sivamoke Dissook¹, Tomohisa Kuzuyama², Yuri Nishimoto³, Shigeru Kitani³, Sastia Putri^{1✉} & Eiichiro Fukusaki¹

Methyl erythritol phosphate (MEP) is the metabolite found in the MEP pathway for isoprenoid biosynthesis, which is known to be utilized by plants, algae, and bacteria. In this study, an unprecedented observation was found in the oleaginous yeast *Yarrowia lipolytica*, in which one of the chromatographic peaks was annotated as MEP when cultivated in the nitrogen limiting condition. This finding raised an interesting hypothesis of whether *Y. lipolytica* utilizes the MEP pathway for isoprenoid biosynthesis or not, because there is no report of yeast harboring the MEP pathway. Three independent approaches were used to investigate the existence of the MEP pathway in *Y. lipolytica*; the spiking of the authentic standard, the MEP pathway inhibitor, and the ¹³C labeling incorporation analysis. The study suggested that the mevalonate and MEP pathways co-exist in *Y. lipolytica* and the nitrogen limiting condition triggers the utilization of the MEP pathway in *Y. lipolytica*.

Isoprenoid compounds are the most diverse group of natural products with a broad range of biological functions¹. All isoprenoids derived from isopentenyl diphosphate (IPP) and dimethylallyl diphosphate (DMAPP)². In nature, two routes are leading to IPP and DMAPP; the mevalonic acid (MVA) pathway and the methylerythritol phosphate (MEP) pathway^{3–5} (Fig. 1). The MVA pathway is distributed among archaeobacteria, a few eubacteria, and in the cytosol of almost all eukaryotic cells. In contrast, the MEP pathway is discovered in many bacteria, algae, cyanobacteria, apicomplexan parasites, and plant chloroplasts⁶. Although many studies reported that the MEP pathway does not exist in the yeast, surprisingly, a chromatographic peak annotated as MEP was observed in the intracellular extract of *Y. lipolytica* cultured in a nitrogen limiting condition. This phenomenon is inconsistent with a conventional understanding regarding isoprenoid biosynthesis in yeast.

The oleaginous yeast *Y. lipolytica* is an industrial model organism for the production of bio-sustainable hydrocarbon-based chemicals^{7–13}. *Yarrowia lipolytica* is one of the most contrasting of the characterized Hemiascomycetes¹⁴. In spite of a genome nearly twice the size of *Saccharomyces cerevisiae*, *Y. lipolytica* is not thought to have undertaken whole-genome duplication¹⁵. Besides, *Y. lipolytica* has more characters shared with metazoan cells than other yeasts. These include signal-recognition-particle type 7SL RNA sequence, dispersed 5S genes, and a higher fraction of the genome composed of introns and intergenic sequences^{14,15}. The *Y. lipolytica* genome also holds representatives of diverse classes of transposable elements, including remnants of a DNA transposon¹⁶, long-terminal repeat (LTR)¹⁷, and non-LTR Long Interspersed Element (LINE)¹⁸ retrotransposons. Lastly, contrasting to the more well documented respiro-fermentative *S. cerevisiae*, *Y. lipolytica* stands an obligate aerobe. *Yarrowia lipolytica* metabolizes a varied type of carbon substrates, including lipids, paraffin, oils, acetate, and glycerol, and is capable of accumulating a high ratio of cell weight in lipid^{7,13,19–21}.

This study raises an intriguing hypothesis of whether *Y. lipolytica* could utilize the MEP pathway for isoprenoid biosynthesis. Here, we present a more in-depth investigation of the existence of the MEP pathway in *Y. lipolytica* using three independent approaches; the spiking of the authentic standard, the inhibition of the

¹Department of Biotechnology, Graduate School of Engineering, Osaka University, 2-1 Yamadaoka, Suita, Osaka 565-0871, Japan. ²Graduate School of Agricultural and Life Sciences, The University of Tokyo, 1-1-1 Yayoi, Bunkyo-ku, Tokyo 113-8657, Japan. ³International Center for Biotechnology, Osaka University, 2-1 Yamadaoka, Suita, Osaka 565-0871, Japan. ✉email: sastia_putri@bio.eng.osaka-u.ac.jp

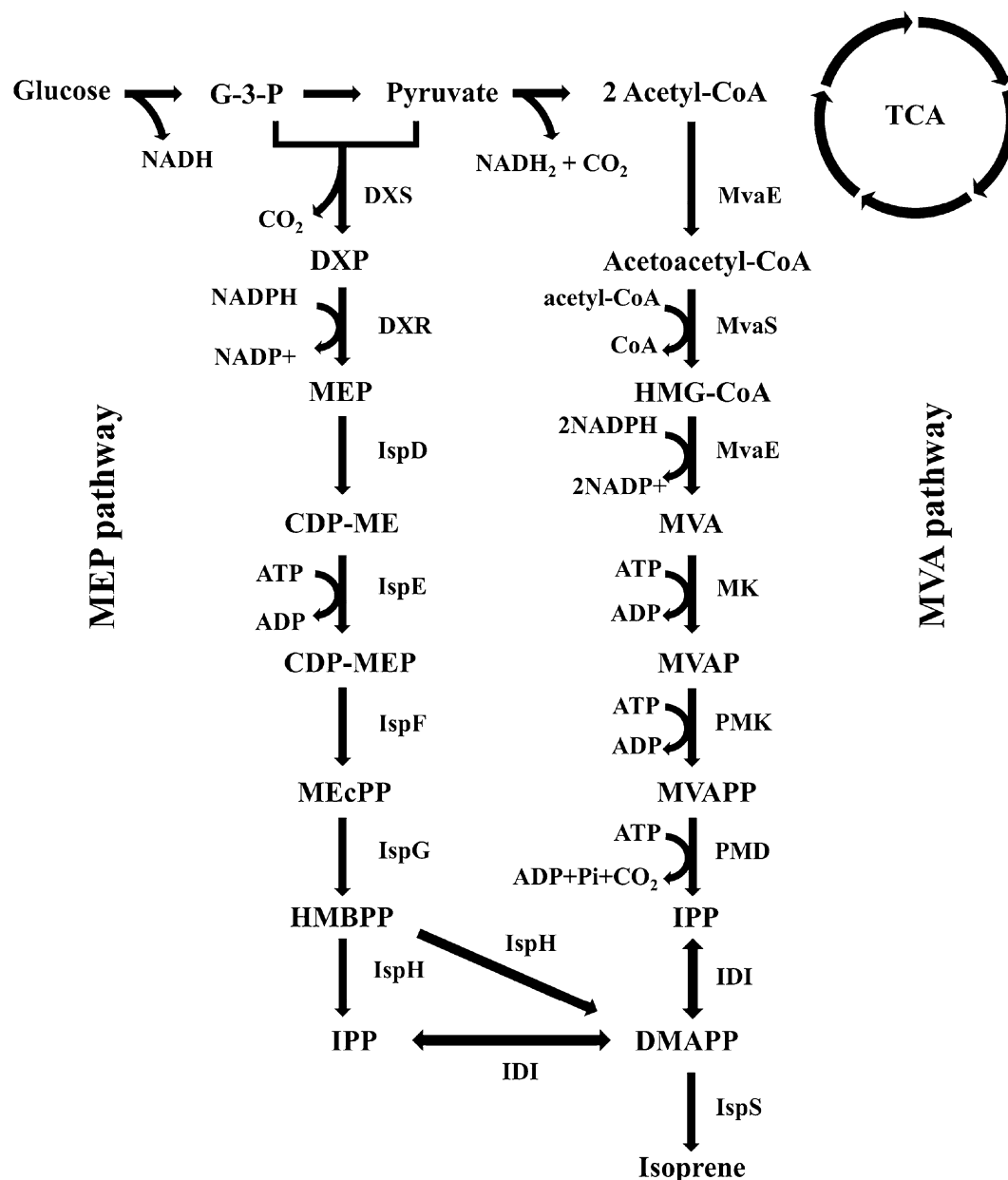


Figure 1. Biosynthetic pathways for isoprenoid precursors. The mevalonic acid (MVA) pathway in animals, plants (cytosol), fungi, and archaea. The methylerythritol phosphate (MEP) pathway in eubacteria, green algae, and the plastids of higher plants. Abbreviations: CDP-ME, methylerythritol cytidyl diphosphate; DXP, 1-deoxy-D-xylulose 5-phosphate; DXR, DXP reductoisomerase; DXS, DXP synthase; HMBPP, 4-hydroxy-3-methylbutenyl-1-diphosphate; IPP, Isopentenyl diphosphate; IDI, IPP:DMAPP isomerase; MEcPP, 2-C-methyl-D-erythritol-2,4-cyclodiphosphate; MK, mevalonic acid kinase; PMD, phospho-mevalonate decarboxylase; PMK, phosphomevalonate kinase; DMAPP, dimethylallyl diphosphate; HMG-CoA, hydroxymethylglutaryl-CoA; MVA, mevalonic acid; MVAP, phosphomevalonic acid; MVAPP, diphosphomevalonic acid.

pathway-specific inhibitor, and analysis of the incorporation of the stable carbon isotope in the natural product. This study suggested that the MVA and MEP pathways co-exist in *Y. lipolytica*.

Results

MEP detection and verification. The annotated MEP peak from the liquid chromatography with tandem mass spectrometry (LC/QqQ/MS) was found only in the sample from the culture extract of *Y. lipolytica* in which the nitrogen source was limited. Interestingly, the chromatographic feature was similar to the previous report on the MEP analysis in *E. coli*, where a larger peak with the same MRM was detected next to the MEP peak²². To confirm that the possible MEP chromatographic peak found in *Y. lipolytica* is comparable to the analytical standard; the spiking analysis of the authentic MEP standard was carried out. The results showed that the annotated

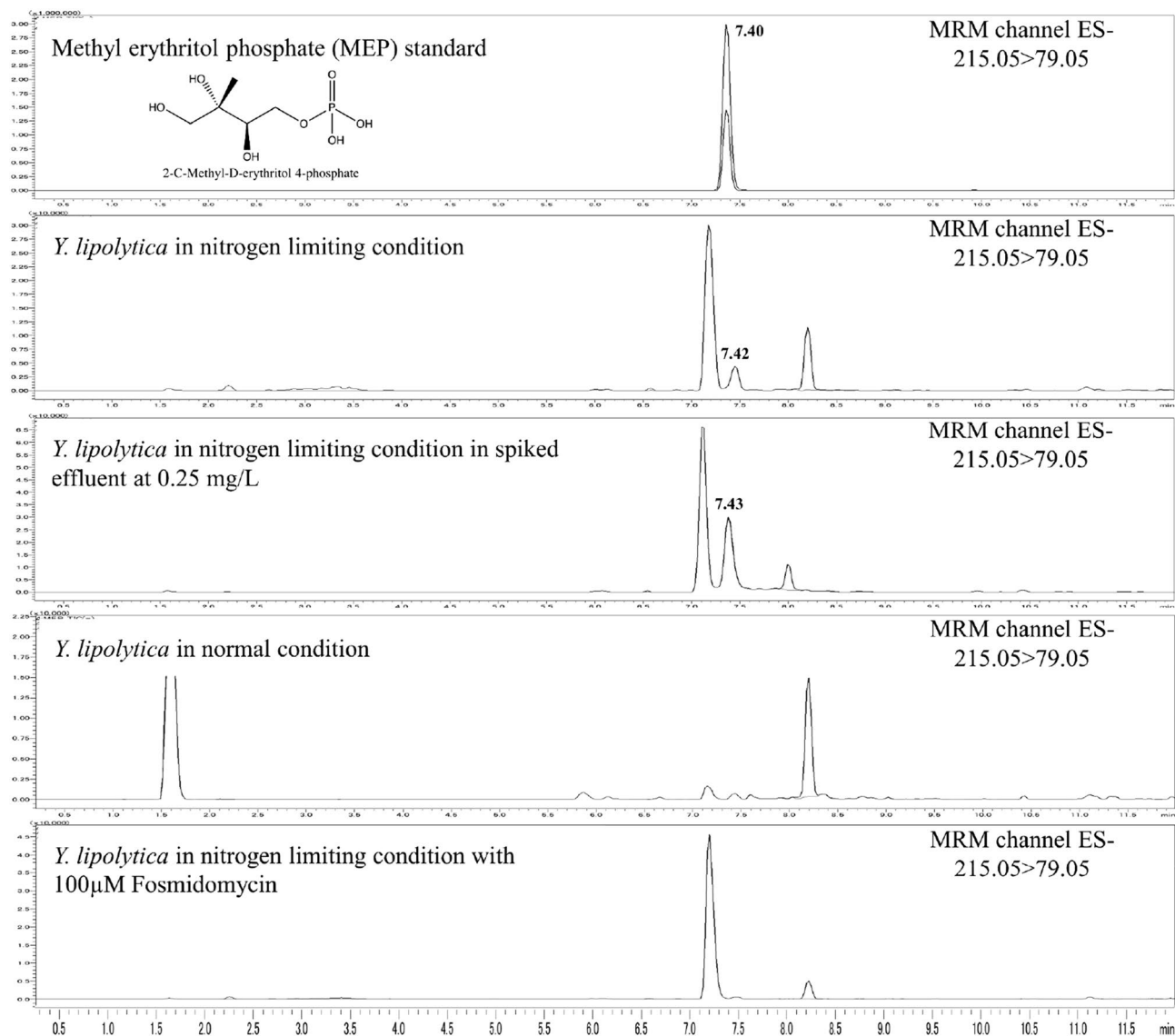


Figure 2. LC/QqQ/MS analysis results; Multiple reaction monitoring (MRM) chromatograms of methyl erythritol phosphate (MEP) standard, *Y. lipolytica* in nitrogen limiting condition, *Y. lipolytica* in nitrogen limiting condition in spiked effluent at 0.25 g/L, *Y. lipolytica* in normal condition and *Y. lipolytica* in nitrogen limiting condition cultivated with 100 μ M fosmidomycin.

MEP peak detected in *Y. lipolytica* was identical to the analytical MEP standard, thereby meeting the criteria for metabolite identification based on The Metabolomics Standards Initiative (MSI) for level 1 identification (Fig. 2). We also analyzed the sample in different LC/QqQ/MS systems (Supplementary Fig. 1).

Effect of MEP pathway inhibitor. The antibiotic fosmidomycin, originally isolated from *Streptomyces lavendulae*, has been shown to inhibit bacterial isoprenoid biosynthesis²³. It was later demonstrated that fosmidomycin specifically inhibits 1-deoxyxylulose 5-phosphate (DXP) reductoisomerase (DXR)^{24,25}, which catalyzes the conversion of the DXP to MEP in the specific step of the MEP pathway. In this study, *Y. lipolytica* cultivated in nitrogen limiting condition was treated with fosmidomycin and analyzed with LC/QqQ/MS. The data show that the MEP peak that was elucidated with the authentic standard spiking earlier was reduced in the presence of fosmidomycin. The result suggested that DXR-like activity was present in *Y. lipolytica* and inhibited by fosmidomycin to have reduced the MEP content (Fig. 2).

¹⁻¹³C carbon isotope glucose labeled experiment. To further assess whether the MEP-like pathway works in *Y. lipolytica*, we examined the natural end product derived from DMAPP, which is the known product from both the MVA pathway and the MEP pathway. Ergosterol, which acts as a membrane stabilizer in yeast, is one of the most abundant natural products derived from IPP and DMAPP^{26,27}. It has been established that incorporation of the ¹⁻¹³C-labeled glucose through the MVA pathway and the MEP pathway resulted in the different

labeling patterns⁴ (Supplementary Fig. 2). With this information, we are able to determine the theoretically labeled carbon position of the ergosterol from the MVA pathway and MEP pathway (Supplementary Fig. 3). In this study, LC/QqQ/MS was utilized to investigate the biological pathway involved in the biosynthesis of the ergosterol from *Y. lipolytica* cultivated in some conditions. All mass spectral data were extracted at 7.7 min, where ergosterol is eluted. Usually, the largest fragment of ergosterol detected in LC/QqQ/MS has a mass to charge ratio (m/z) of 379²⁸. When 1-¹³C-labeled glucose was added to the culture medium of *Y. lipolytica*, the incorporation of the ¹³C carbon isotope increased the m/z of the fragment to the maximum of 383. Thus, this fragment of m/z 383 was selected as the parent ion for the product ion scan (Fig. 3A). Using CFMID 3.0, a mass spectra prediction software²⁹, we were able to computationally assign the chemical structure to the ergosterol product ion generated by fragmentation of the parent ion. The full product ions are listed in Supplementary Table 1. By comparing the neutral fragment m/z and the labeled fragment m/z , it was possible to predict if the ergosterol were synthesized from the MVA pathway or the MEP pathway (Fig. 3B). In the condition where nitrogen source was limited, three fragments mass shift were found to match those of the peaks presumably derived from the MEP pathway; m/z 69 to 70, m/z 121 to 124, and m/z 143 to 146, whereas, in the normal condition, one fragment was found to be theoretically derived from each pathway; m/z 69 to 70 from the MEP pathway and m/z 95 to 98 from the MVA pathway. The predicted m/z and structure of fragments resulted from the MEP pathway, and the MVA pathway could be found in Supplementary Fig. 4. The fragment data show that ergosterol from the two conditions has a different m/z shift; this might be the result of the biosynthesis in different pathways. Combined with other results mentioned above, we concluded that ergosterol in *Y. lipolytica* might be derived from both the MVA pathway and the MEP pathway.

Discussion

It is a common knowledge that altering the carbon to nitrogen ratio in culture medium could drastically change the amount of lipid accumulated in the oleaginous yeasts, and it might have a different effect on different strains of yeast^{30–33}. Substantial work has been done in the past few years to understand and engineer oleaginous yeast³⁴. However, only limited work has been done to characterize the metabolic response of *Y. lipolytica* in nitrogen limiting condition. One of the best methods to investigate the cell's response is by metabolomics approach. Metabolites are end products of a complicated network of reactions in which many regulatory processes (genes, mRNAs, enzymes, metabolites, etc.) are included; these data are known to possess a high correlation to a physical phenomenon³⁵. Upon our data analysis, we stumbled upon a very startling data where one of the chromatographic peaks was annotated as MEP. Although the LC/QqQ/MS annotated data are widely accepted in the field of metabolomics due to its selectivity and sensitivity³⁶, we took extra steps to verify the results by further checked the annotation with the authentic standard spiking technique. The spiking of the authentic standard provided the analytical chemistry evidence of the existence of the MEP pathway enzyme(s) in *Y. lipolytica*. Note that in the nitrogen limiting condition, another peak around 7.40 min that also only occurs in the nitrogen limiting condition, this might be a compound that is important for adapting to the nitrogen limiting condition or related to this MEP-like pathway. It would be interesting for future studies. The next issue we address is the evidence from the biological perspective. One of the best ways to assess the MEP pathway activity is to evaluate the enzyme specific to the MEP pathway; the DXR reductoisomerase³⁷. However, no DXR gene has been annotated in the genome of *Y. lipolytica* and the BLAST homology search^{41,42} returns no significant alignment. We further investigated this issue with an in-house bioinformatics pipeline (Supplementary Fig. 5) and got some gene candidates. Nevertheless, a vital element of the known DXR gene was still lacking (Supplementary Fig. 1). The lack of the DXR gene information might be due to the lack of data on the laboratory-tested gene function as more than half of *Y. lipolytica* gene was not annotated³⁸. We also hypothesized that *Y. lipolytica* might utilize an isozyme that catalyzes the DXR-like activity^{39,40} or that the MEP found in *Y. lipolytica* was synthesized by an enzyme with extremely low or no homology with the known enzyme in the MEP pathway. Additionally, to provide more information regarding the potential MEP pathway gene target in *Y. lipolytica*, the RNA sequencing data from a previous publication⁴⁴ was analyzed (Supplementary Fig. 6) to create a list of candidate MEP pathway enzymes in *Y. lipolytica*. The detailed workflow^{45–49} could be found in Supplementary Fig. 2. The findings that *Y. lipolytica* is able to biosynthesize MEP, and the strain has the DXR-like activity could lead to a hypothesis that a pathway similar to the MEP pathway is present in *Y. lipolytica*. To assess this hypothesis, we performed an incorporation analysis with 1-¹³C-labeled glucose into ergosterol; which acts as a membrane stabilizer in yeast and is a natural product derived from IPP and DMAPP. There are several reasons why we chose ergosterol; 1. ergosterol was found accumulating in the yeast cell membrane with relatively high abundance (1–3% dried cell weight), 2. the ergosterol molecule provide multiple fragments that could be analyzed for the pathway differences, and they provide more mass different; therefore, the effect of the MEP or MVA pathway can be clearly observed, 3. the extraction and purification method for ergosterol was well established. This analysis was grounded on the fact that these building blocks are biosynthesized by completely different routes, the MVA pathway, and the MEP pathway (Supplementary Fig. 2)⁴. Although, this experiment was done with the assumption that the known MEP pathway was utilized in *Y. lipolytica*, the fragments found from the experiment match perfectly with the predicted mass shift. Moreover, the fact that the fragment mass shift from different conditions shifted differently could be an indication that different biosynthesis pathways were utilized. Combined with other results mentioned above, we concluded that ergosterol in *Y. lipolytica* might be derived from both the MVA pathway and the MEP-like pathway. Although more direct evidence such as the identification of all intermediates and discovery of key enzymes are still needed, the observations in this study provide important information for researchers to further verify the existence of the MEP-like pathway.

Altogether, our results suggested that the MVA pathway and the MEP-like pathway co-exist in *Y. lipolytica*. Notably, the nitrogen limiting condition triggered the utilization of the MEP-like pathway. Three types of

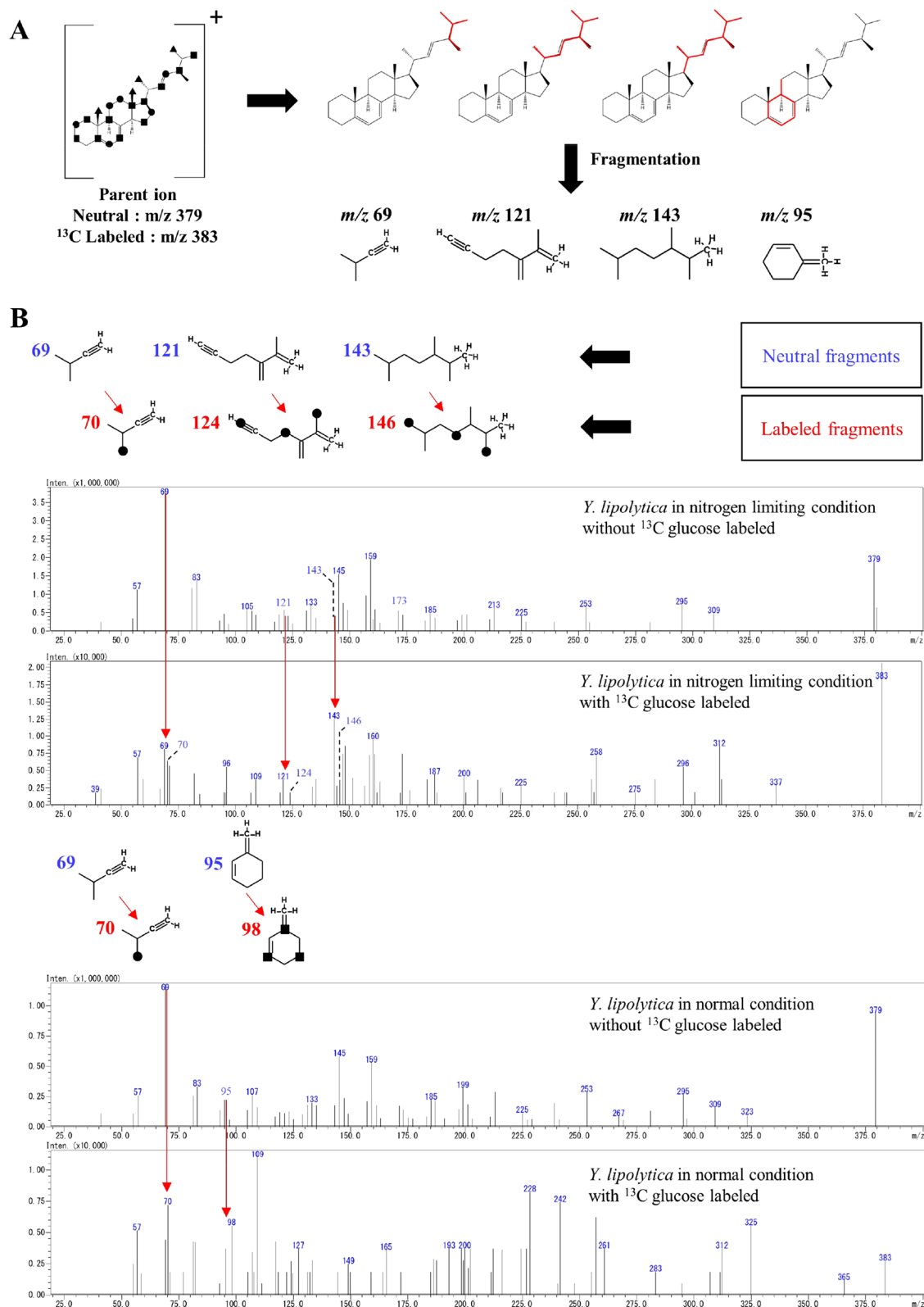


Figure 3. Mass spectroscopic analysis of ^{13}C labeled ergosterol. (A) the predicted fragment from parent ion; (B) the mass spectra comparing the neutral and the labeled ergosterol product ion. The assign fragment structure elucidates the m/z increased specifically to the MVA pathway or the MEP pathway; circles indicate the theoretically labeled position from the MEP pathway, squares indicate the theoretically labeled position from the MVA pathway. All fragment structure assignment was done using CFMID 3.0 software. The predicted m/z and the structure of fragments resulted from the MEP pathway and the MVA pathway are found in Supplementary Fig. 4.

evidence support the conclusion that *Y. lipolytica* might possess an enzyme(s) involved in the MEP-like pathway. Firstly, the authentic standard confirmed that the MEP was detected in *Y. lipolytica*. Secondly, the MEP peak was affected by the specific MEP pathway inhibitor fosmidomycin. Finally, the ^{13}C labeled glucose feeding showed that the ergosterol fragments were matched with the theoretical calculations of the mass increased from both the MVA pathway and the MEP pathway. The genes involved in the MEP synthesis in *Y. lipolytica* and the mechanism on how nitrogen limiting conditions trigger this phenomenon remain unclear. Our findings reported here may spark new investigations on the possibility of the MEP pathway-like existence in yeasts that may be activated in specific environmental conditions. Moreover, this finding might open a new avenue for oleaginous yeast control and modification for further industrial applications.

Methods

Yeast strain, cultivation, and sample collection. *Yarrowia lipolytica* PO1d obtained from the National University of Singapore were pre-cultivated for 17 h in synthetic complete (SC) medium (2%w/v glucose, 0.64%w/v yeast nitrogen-based without amino acid, 0.19%w/v drop-out mix without uracil, 0.00076%w/v uracil) in 100 mL Erlenmeyer flasks at the constant temperature of 30 °C and the shaking speed of 200 rpm. The cells were then inoculated into 20 mL SC medium without ammonium sulfate (nitrogen limiting condition) to obtain the initial optical density at 600 nm of 0.1 in 100 mL Erlenmeyer flasks at the constant temperature of 30 °C and the shaking speed of 200 rpm. For the sample collection, 5 OD₆₀₀ units of cells were collected at 36 h by means of fast filtration using the 0.45 μm pore size, 47 mm diameter nylon membrane (Millipore). The cells were then immersed in liquid nitrogen immediately for metabolism quenching and kept at -80 °C until extraction. For extraction, 1.8 mL of extraction solvent (methanol/water/chloroform = 5:2:2 v/v/v, with 20 μg/L of (+)-10 camphorsulfonic acid as an internal standard) was added to each 2-mL sampling tube with filtered sample and incubated at -30 °C for 1 h. After incubation, 700 μL of the solution was transferred to a new tube containing 350 μL of water. The mixture was mixed using a vortex and centrifuged at 16,000 × g for 3 min at 4 °C to separate polar and non-polar phases. 700 μL of the upper polar phase was transferred to a new tube via syringe filtration (0.2 μm PTFE hydrophilic membrane, Millipore). The sample was centrifugally concentrated for 2 h and freeze-dried overnight. After reconstituting in 100 μL ultra-pure water, the sample was centrifuged at 16,000 × g for 3 min at 4 °C and transferred to an LC glass vial. All experiment was done in triplicates.

LCMS analysis for MEP. The MEP authentic standard was purchased from Sigma-Aldrich (product number 52131). The samples were analyzed based on the method adopted from Dempo et al.⁴³ using a Nexera UHPLC system (Shimadzu, Kyoto, Japan) coupled with LC/QqQ/MS 8030 Plus (Shimadzu). The column used was CERI ODS L-column 2 metal free column (150 mm × 2.1 mm, particle size 3 μm), the mobile phase was (A): 10 mM tributylamine and 15 mM acetate in ultra-pure water, (B): methanol. The flow rate was set to 0.2 mL/min, the column oven temperature was set to 45 °C. The mobile phase (B) was increased from 0 to 15%, 50%, and 100% from 1.0 to 1.5 min, 3.0 to 8.0 min, and 8.0 to 10.0 min, respectively; held until 11.5 min, decreased to 0% from 11.5 min and held at 0% until 20 min. The analysis mode was negative ion detection mode. The injection volume was 3 μL, probe position was +1.5 mm, desolvation line temperature was 250 °C, heat block temperature was 400 °C, nebulizer gas flow was 2 L/min, and drying gas flow was 15 L/min. All analysis was done in triplicates.

Effect of MEP pathway inhibitor analysis. To assess the DXR activity, the enzyme specific to the MEP pathway in *Y. lipolytica*, DXP reductoisomerase inhibitor (Fosmidomycin) was used. Fosmidomycin sodium salt hydrate ≥ 95% (NMR) was purchased from Sigma-Aldrich (product number F8682). *Yarrowia lipolytica* the main culture, was cultivated and collected as mentioned above, using medium with limited nitrogen source with the addition of 100 μM inhibitor. The samples were analyzed using the LCMS method above. All analysis was done in triplicates.

^{1-13}C carbon isotope glucose labeled analysis. To further assess if the MEP pathway was working in *Y. lipolytica*, we analyze ergosterol in *Y. lipolytica*, which is the natural end product derived from DMAPP. The ^{1-13}C D-glucose (98–99%) was purchased from Cambridge Isotope Laboratories (Item Number CLM-420-PK). *Yarrowia lipolytica* PO1d were pre-cultivated overnight in synthetic complete (SC) medium (2%w/v glucose, 0.64%w/v yeast nitrogen-based without amino acid, 0.19%w/v drop-out mix without uracil, 0.00076%w/v uracil) in 100 mL shake flasks at 30 °C and 200 rpm. The pre-cultured cells were inoculated into 20 mL 10% ^{1-13}C D-glucose SC medium without ammonium sulfate to obtain the initial optical density at 600 nm of 0.1 in 100 mL shake flasks at 30 °C and 200 rpm. For sample collection, the cell pellet was collected at 36 h by centrifugation at 4 °C, 10,000 rpm, 10 min. The cell pellet was then submerged in liquid nitrogen and subjected to lyophilization overnight for further use. For extraction, 1 g of lyophilized cell pellet was extracted by 20 mL of extraction solvent (chloroform: methanol = 2:1 v/v, with 20 μg/L) for 2 h with stirring. After incubation, the solution was filtered with filter paper with cut-off diameter of 3 μm (Advantech No.6), the extraction was repeated three times. The solution was evaporated until dryness using a rotary evaporator. The ergosterol was then separated from the crude extract by open column chromatography; the fraction containing ergosterol was confirmed by GCMS (Supplementary Fig. 7). 0.1 mg. of dried ergosterol fraction was dissolved in 1 mL methanol then analyze using a Nexera UHPLC system (Shimadzu, Kyoto, Japan) coupled with LC/QqQ/MS 8050 (Shimadzu) in positive ion detection mode. The column used was inertSustain AQ-C18 3 μm 2.1 × 150 mm (GL science); the mobile phase was methanol: acetonitrile 80:20, flow rate: 0.2 mL/min, oven temperature: 40 °C, injection volume 3 μL, LC program: isocratic flow. The collision energy optimized for ergosterol fragmentation at q2 was -25 eV. All analysis was done in triplicates, for qualitative analysis, the representative sample was selected for discussion.

Received: 28 September 2020; Accepted: 11 January 2021

Published online: 10 March 2021

References

- Ajlikumar, P. K. *et al.* Terpenoids: opportunities for biosynthesis of natural product drugs using engineered microorganisms. *Mol. Pharm.* **5**, 167–190 (2008).
- Mcgarvey, D. J. & Croteau, R. Terpenoid metabolism. *Plant Cell* **7**, 1015–1026 (1995).
- Rohmer, M. Thymalonyl-CoA-independent methylerythritol 4-phosphate (MEP) pathway for isoprenoid biosynthesis, including carotenoids. *Pure Appl. Chem.* **71**, 2279–2284 (1999).
- Rohmer, M. The discovery of a mevalonate-independent pathway for isoprenoid biosynthesis in bacteria, algae and higher plants. *Nat. Prod. Rep.* **16**, 565–574 (1999).
- Vranová, E., Coman, D. & Gruijssem, W. Network analysis of the MVA and MEP pathways for isoprenoid synthesis. *Annu. Rev. Plant Biol.* **64**, 665–700 (2013).
- Kuzuyama, T. & Seto, H. Diversity of the biosynthesis of the isoprene units. *Nat. Prod. Rep.* **20**, 171–183 (2003).
- Fickers, P. *et al.* Hydrophobic substrate utilisation by the yeast *Yarrowia lipolytica*, and its potential applications. *FEMS Yeast Res.* **5**, 527–543 (2005).
- Vasdekis, A. E., Silverman, A. M. & Stephanopoulos, G. Exploiting bioprocessing fluctuations to elicit the mechanistics of de novo lipogenesis in *Yarrowia lipolytica*. *PLoS ONE* **12**, e0168889 (2017).
- Beopoulos, A. *et al.* *Yarrowia lipolytica* as a model for bio-oil production. *Prog. Lipid Res.* **48**, 375–387 (2009).
- Blazek, J. *et al.* Harnessing *Yarrowia lipolytica* lipogenesis to create a platform for lipid and biofuel production. *Nat. Commun.* **5**, 3131 (2014).
- Zhu, Q. & Jackson, E. N. Metabolic engineering of *Yarrowia lipolytica* for industrial applications. *Curr. Opin. Biotechnol.* **36**, 65–72 (2015).
- Xu, P., Qiao, K., Ahn, W. S. & Stephanopoulos, G. Engineering *Yarrowia lipolytica* as a platform for synthesis of drop-in transportation fuels and oleochemicals. *Proc. Natl. Acad. Sci. U.S.A.* **113**, 10848–10853 (2016).
- Sarris, D. *et al.* production of added-value metabolites by *Yarrowia lipolytica* growing in olive mill wastewater-based media under aseptic and non-aseptic conditions. *Eng. Life Sci.* **17**, 695–709 (2017).
- Dujon, B. *et al.* Genome evolution in yeasts. *Nature* **430**, 35–44 (2004).
- Gaillardin, C., Mekouar, M. & Neuvéglise, C. Comparative genomics of *Yarrowia lipolytica*. In *Microbiology Monographs* (ed. Barth, G.) 1–30 (Springer, 2013).
- Neuvéglise, C., Chalvet, F., Wincker, P., Gaillardin, C. & Casaregola, S. Mutator-like element in the yeast *Yarrowia lipolytica* displays multiple alternative splicings. *Eukaryot. Cell* **4**, 615–624 (2005).
- Neuvéglise, C., Feldmann, H., Bon, E., Gaillardin, C. & Casaregola, S. Genomic evolution of the long terminal repeat retrotransposons in hemiascomycetous yeasts. *Genome Res.* **12**, 930–943 (2002).
- Casaregola, S., Neuvéglise, C., Bon, E. & Gaillardin, C. Ylli, a non-LTR retrotransposon L1 family in the dimorphic yeast *Yarrowia lipolytica*. *Mol. Biol. Evol.* **19**, 664–677 (2002).
- Ledesma-Amaro, R. & Nicaud, J.-M. Metabolic engineering for expanding the substrate range of *Yarrowia lipolytica*. *Trends Biotechnol.* **34**, 798–809 (2016).
- Papanikolaou, S. & Aggelis, G. Lipid production by *Yarrowia lipolytica* growing on industrial glycerol in a single stage continuous culture. *Bioresour. Technol.* **82**, 43–49 (2002).
- Ledesma-Amaro, R., Dulermo, T. & Nicaud, J. M. Engineering *Yarrowia lipolytica* to produce biodiesel from raw starch. *Biotechnol. Biofuels* **8**, 148 (2015).
- González-Cabanelas, D., Hammerbacher, A., Raguschke, B., Gershenzon, J. & Wright, L. P. Quantifying the metabolites of the methylerythritol 4-phosphate (MEP) pathway in plants and bacteria by liquid chromatography-triple quadrupole mass spectrometry. *Methods Enzymol.* **576**, 225–249 (2016).
- Dhiman, R. K. *et al.* 1-Deoxy-D-xylulose 5-phosphate reductoisomerase (IspC) from *Mycobacterium tuberculosis*: towards understanding mycobacterial resistance to fosmidomycin. *J. Bacteriol.* **187**, 8395–8402 (2005).
- Shimizu, T. & Takahashi, S. Fosmidomycin, a specific inhibitor of 1-deoxy-D-xylulose 5-phosphate reductoisomerase in the non-mevalonate pathway for terpenoid biosynthesis. *Tetrahedron Lett.* **39**, 7913–7916 (1998).
- Mueller, C., Schwender, J., Zeidler, J. & Lichtenthaler, H. K. Properties and inhibition of the first two enzymes of the non-mevalonate pathway of isoprenoid biosynthesis. *Biochem. Soc. Trans.* **28**, 792–793 (2000).
- Bills, C. E., Massengale, O. N. & Prickett, P. S. Factor determining the ergosterol content of yeast. *J. Biol. Chem.* **87**, 259–264 (1930).
- Fryberg, M., Oehlschlager, A. C. & Unrau, A. M. Biosynthesis of ergosterol in yeast. Evidence for multiple pathways. *J. Am. Chem. Soc.* **95**, 5747–5757 (1973).
- Headley, J. V., Peru, K. M., Verma, B. & Robarts, R. D. Mass spectrometric determination of ergosterol in a prairie natural wetland. *J. Chromatogr. A* **958**, 149–156 (2002).
- Djombou-Feunang, Y. *et al.* CFM-ID 30: Significantly improved ESI-MS/MS prediction and compound identification. *Metabolites* **9**, 1–23 (2019).
- Manikandan, K. & Viruthagiri, T. Optimization of C/N ratio of the medium and fermentation conditions of ethanol production from tapioca starch using co-culture of *Aspergillus niger* and *Sachromyces cerevisiae*. *Int. J. ChemTech Res.* **2**, 947–955 (2010).
- Egli, T. & Quayle, J. R. Influence of the carbon: nitrogen ratio of the growth medium on the cellular composition and the ability of the methylotrophic yeast *Hansenula polymorpha* to utilize mixed carbon sources. *J. Gen. Microbiol.* **132**, 1779–1788 (1986).
- Gao, L., Sun, M. H., Liu, X. Z. & Che, Y. S. Effects of carbon concentration and carbon to nitrogen ratio on the growth and sporulation of several biocontrol fungi. *Mycol. Res.* **111**, 87–92 (2007).
- Jackson, M. A. & Bothast, R. J. Carbon concentration and carbon-to-nitrogen ratio influence submerged-culture conidiation by the potential bioherbicide *Colletotrichum truncatum* NRRL 13737. *Appl. Environ. Microbiol.* **56**, 3435–3438 (1990).
- Sheng, J. & Feng, X. Metabolic engineering of yeast to produce fatty acid-derived biofuels: bottlenecks and solutions. *Front. Microbiol.* **6**, 554 (2015).
- Ryan, D. & Robards, K. Metabolomics: The greatest omics of them all?. *Anal. Chem.* **78**, 7954–7958 (2006).
- Xiao, J. F., Zhou, B. & Ransom, H. W. Metabolite identification and quantitation in LC-MS/MS-based metabolomics. *TrAC Trends Anal. Chem.* **32**, 1–14 (2012).
- Brown, A. C. & Parish, T. Dxr is essential in *Mycobacterium tuberculosis* and fosmidomycin resistance is due to a lack of uptake. *BMC Microbiol.* **8**, 1–9 (2008).
- Magnan, C. *et al.* Sequence assembly of *Yarrowia lipolytica* strain W29/CLIB89 shows transposable element diversity. *PLoS ONE* **11**, 1–28 (2016).
- Soliman, S. S. M., Tsao, R. & Raizada, M. N. Chemical inhibitors suggest endophytic fungal paclitaxel is derived from both mevalonate and non-mevalonate-like pathways. *J. Nat. Prod.* **74**, 2497–2504 (2011).

40. Carretero-Paulet, L. *et al.* Evolutionary diversification and characterization of the eubacterial gene family encoding DXR type II, an alternative isoprenoid biosynthetic enzyme. *BMC Evol.* **13**, 180 (2013).
41. Rost, B. Twilight zone of protein sequence alignments. *Protein Eng. Des. Sel.* **12**, 85–94 (1999).
42. Larkin, M. A. *et al.* Clustal W and Clustal X version 2.0. *Bioinformatics* **23**, 2947–2948 (2007).
43. Dempo, Y., Ohta, E., Nakayama, Y., Bamba, T. & Fukusaki, E. Molar-based targeted metabolic profiling of cyanobacterial strains with potential for biological production. *Metabolites* **4**, 499–516 (2014).
44. Sánchez, B. J. *et al.* Improving the phenotype predictions of a yeast genome-scale metabolic model by incorporating enzymatic constraints. *Mol. Syst. Biol.* **13**, 935 (2017).
45. Kim, D., Paggi, J. M., Park, C., Bennett, C. & Salzberg, S. L. Graph-based genome alignment and genotyping with HISAT2 and HISAT-genotype. *Nat. Biotechnol.* **37**, 907–915 (2019).
46. Pertea, M. *et al.* StringTie enables improved reconstruction of a transcriptome from RNA-seq reads. *Nat. Biotechnol.* **33**, 290–295 (2015).
47. Love, M. I., Huber, W. & Anders, S. Moderated estimation of fold change and dispersion for RNA-seq data with DESeq2. *Genome Biol.* **15**, 550 (2014).
48. Bailey, T. L., Williams, N., Misleh, C. & Li, W. W. MEME: discovering and analyzing DNA and protein sequence motifs. *Nucleic Acids Res.* **34**, 369–373 (2006).
49. Grant, C. E., Bailey, T. L. & Noble, W. S. FIMO: scanning for occurrences of a given motif. *Bioinformatics* **27**, 1017–1018 (2011).

Acknowledgements

This work was supported by the Ministry of Education, Culture, Sports, Science, and Technology (MEXT). This study will be included in a dissertation submitted by Sivamoke Dissook to Osaka University in partial fulfillment of the requirement for his doctoral degree.

Author contributions

S.D., T.K., E.F., and S.P. designed the experiments. S.D., and Y.N. performed the experiments. S.D., T.K., Y.N., S.K., E.F. and S.P. performed data analysis. S.D., T.K., S.K., and S.P. wrote the paper.

Competing interests

The authors declare no competing interests.

Additional information

Supplementary Information The online version contains supplementary material available at <https://doi.org/10.1038/s41598-021-85170-0>.

Correspondence and requests for materials should be addressed to S.P.

Reprints and permissions information is available at www.nature.com/reprints.

Publisher's note Springer Nature remains neutral with regard to jurisdictional claims in published maps and institutional affiliations.



Open Access This article is licensed under a Creative Commons Attribution 4.0 International License, which permits use, sharing, adaptation, distribution and reproduction in any medium or format, as long as you give appropriate credit to the original author(s) and the source, provide a link to the Creative Commons licence, and indicate if changes were made. The images or other third party material in this article are included in the article's Creative Commons licence, unless indicated otherwise in a credit line to the material. If material is not included in the article's Creative Commons licence and your intended use is not permitted by statutory regulation or exceeds the permitted use, you will need to obtain permission directly from the copyright holder. To view a copy of this licence, visit <http://creativecommons.org/licenses/by/4.0/>.

© The Author(s) 2021