

SCIENTIFIC REPORTS



OPEN

Trauma-specific Grey Matter Alterations in PTSD

Linghui Meng^{1,2}, Jing Jiang¹, Changfeng Jin³, Jia Liu¹, Youjin Zhao¹, Weina Wang¹, Kaiming Li¹ & Qiyong Gong¹

Received: 20 May 2016

Accepted: 01 September 2016

Published: 21 September 2016

Previous studies have demonstrated that patients with posttraumatic stress disorder (PTSD) caused by different types of trauma may show divergence in epidemiology, clinical manifestation and treatment outcome. However, it is still unclear whether this divergence has neuroanatomic correlates in PTSD brains. To elucidate the general and trauma-specific cortical morphometric alterations, we performed a meta-analysis of grey matter (GM) changes in PTSD (N = 246) with different traumas and trauma-exposed controls (TECs, N = 347) using anisotropic effect-size signed differential mapping and its subgroup analysis. Our results revealed general GM reduction (GMR) foci in the prefrontal-limbic-striatal system of PTSD brains when compared with those of TECs. Notably, the GMR patterns were trauma-specific. For PTSD by single-incident traumas, GMR foci were found in bilateral medial prefrontal cortex (mPFC), anterior cingulate cortex (ACC), insula, striatum, left hippocampus and amygdala; and for PTSD by prolonged traumas in the left insula, striatum, amygdala and middle temporal gyrus. Moreover, Clinician-Administered PTSD Scale scores were found to be negatively associated with the GM changes in bilateral ACC and mPFC. Our study indicates that the GMR patterns of PTSD are associated with specific traumas, suggesting a stratified diagnosis and treatment for PTSD patients.

Posttraumatic stress disorder (PTSD) is the only major mental disorder with a known cause, i.e., an event that threatens one's physical integrity or that of others¹. Examples of traumatic events are natural disasters, accidents, combats, childhood abuse, sexual abuse and indirect exposure by learning that a close relative or a friend was exposed to trauma². These events can be broadly classified into natural vs. man-made, intentional vs. non-intentional, or single-incident vs. repetitive or prolonged^{3–6}. It has been reported that 60% of men and 50% of women in their lifetime will experience one or other kinds of trauma and approximately 20% of those trauma-exposed individuals will develop PTSD⁷. However, the risk of development of PTSD after trauma is subject to the trauma type. For instance, sexual abuse causes a higher rate of PTSD than other trauma categories⁸. Clinical trials also suggest that different traumatic events may interact with individual factors, leading to different physical and behavioral outcomes as well as different prevalence of PTSD^{3,8–11}. For instance, Husarewycz *et al.* reported that natural disaster/terrorism is associated with cardiovascular disease, gastrointestinal disease and arthritis while combat-related trauma is not positively associated with any physical condition⁹. Moreover, medication and social support have been suggested to differentiate among trauma types^{4,6}. For PTSD patients by prolonged traumas, the treatment of dissociation and interpersonal problems may be the first priority, rather than focusing on the impact of specific past events and the processing of specific traumatic memories in general PTSD patients¹. These accumulated pieces of evidence indicate that there might be different areas of brain alterations or even mechanisms underlying PTSD by different kinds of trauma.

Magnetic resonance imaging (MRI) has proven to be a useful tool for exploration of the neural mechanisms of PTSD. For instance, high-resolution structural MRI combined with voxel-based morphometry (VBM) provides opportunities to investigate subtle structural abnormalities^{12–14}. As a well-established neuroimaging tool, VBM investigates the anatomical focal differences between two groups of brains using voxel-wise statistical parametric mapping. It usually consists of several steps including brain segmentation, registration/normalization, smoothing, statistical inferences and multiple comparison correction¹⁵. The resultant grey matter density reflects the local GM volume at a given voxel, making VBM capable of assessing focal volumetric differences of GM in the whole brain. As such, VBM has been widely used in structural MRI studies of various neuropsychiatric disorders^{16,17}. Among them, quite a few studies are about the investigation of structural alterations in PTSD brains. However,

¹Huaxi MR Research Center (HMRRC), Department of Radiology, West China Hospital of Sichuan University, Chengdu 610041, China. ²Department of Radiology, The Third Hospital of Hebei Medical University, Shijiazhuang 050051, China. ³Zigong Mental Health Center, Zigong 643000, China. Correspondence and requests for materials should be addressed to K.L. (email: kaiming.li@scu.edu.cn) or Q.G. (email: gongqiyong@scu.edu.cn)

Study	Subjects (females, n)		Age (years)		Time since trauma	Severity (scale type)	Comorbidity of other psychiatric disorder	Quality scores (out of 12)	Drug status	Trauma
	PTSD	TEC	PTSD	TEC						
Bryant ²⁵	13(NA)	13(NA)	NA	NA	75.7 m	75.2 (CAPS)	5 patients with depression 1 patient with panic disorder	9	n = 5 SSRIs	Accident
Chao ²⁶	21(0)	20(0)	35.9	35.2	NA	59.1 (CAPS)	18 patients with major depression	11	n = 6 serotonergic antidepressants	Combat
Cortese ²⁷	20(1)	25(1)	30.5	30.6	NA	59.4 (CAPS)	6 patients with depression 3 patients with panic disorder 1 patient with generalized anxiety	11	Drug naive	Combat
Eckart ²⁸	20(0)	19(0)	36.2	34.1	>10y	68.9 (CAPS)	15 patients with major depression	11.5	n = 1 antidepressants	Refugee
Felmingham ²⁹	21(NA)	17(NA)	NA	NA	66 m	78 (CAPS)	11 patients with depression 1 patient with panic disorder	9.5	n = 5 SSRIs	Accident
Hakamata ³⁰	14(14)	100(100)	45.6	47.1	266d*	NA	Negative	10.5	No psychotropic medication during last month	Cancer-related disease
Herringa ¹⁹	13(2)	15(1)	28.9	30.1	NA	47.5 (CAPS)	1 patient with generalized anxiety	10	Drug naive	Combat
Kasai ¹⁴	18(0)	23(0)	52.8	51.8	NA	73.3 (CAPS)	NA	10.5	NA	Combat
Li ¹⁸	12(8)	12(8)	34.56	33.25	6–8 m	43.12 (DEQ)	2 patients with major depression	11	Drug naive	Fire disaster
Nardo ³¹	15(3)	17(6)	43.33	41.59	3 m–6y	14.60 (DES)	Negative	11	n = 1 tricyclic antidepressants	Accident
Nardo ³²	21(6)	22(6)	41.7	40.8	2.5y	67.9 (TAQ)	Negative	11	NA	Accident
Rocha-Rego ³³	16(9)	16(9)	43.3	44.9	3y	NA	16 patients with major depression	10	n = 16 antidepressants	Accident
Sui ³⁶	11(11)	8(8)	25.55	27.50	45 m	74.45 (CAPS)	Negative	10	Drug naive	Rape
Tan ³⁴	12(0)	14(0)	37.6	40.9	2y	58.1 (CAPS)	Negative	10	No psychotropic medication during last two years	Mine disaster
Yamasue ³⁵	9(4)	16(6)	44.6	44.4	5–6y	62.2 (CAPS)	1 patient with major depression 2 patients with panic disorder	10	No psychotropic medication during last two years	Accident
Zhang ¹³	10(0)	10(0)	40.8	34.3	187–190 d	78.72 (CAPS)	Negative	10	Drug naive	Mine disaster

Table 1. Demographic and clinical characteristics of subjects in the included 16 studies. Abbreviations: PTSD, Posttraumatic stress disorder; TEC, Trauma-exposed control without PTSD; CAPS, Clinician-Administered PTSD Scale; DEQ, Distressing Event Questionnaire; DES, Dissociative Experience Scale; TAQ, Trauma Antecedent Questionnaire; NA, not available; SSRIs, selective serotonin reuptake inhibitor medications. *Time since the breast cancer surgery.

partially due to the diversity and complexity of PTSD, their results are not quite consistent. For example, when compared with trauma-exposed controls (TECs), PTSD patients by fire disasters showed GM reductions (GMRs) in the left hippocampus¹⁸, while GMRs were observed in the left middle temporal gyrus (MTG) of PTSD patients by combats¹⁹. The inconsistency raises natural questions such as: “what are the general neuroanatomic alterations of PTSD brains and what are the trauma-specific ones?”

A couple of meta-analysis studies have been performed to address these questions. Boccia *et al.* conducted a functional MRI meta-analysis to assess the role of the traumatic events in PTSD¹¹. Their results demonstrated that specific networks of brain areas underpin PTSD after different traumatic events. Meng *et al.* also reported that different kinds of trauma may have acted as a potential moderator or a source of method variance that contributed to the heterogeneous findings of PTSD studies²⁰. Besides, there are three previously published VBM meta-analyses of grey matter changes in PTSD^{12,20,21}. However, none of the above studies focused on the possible different effects exerted on PTSD brains by different traumas, leaving the trauma-specific morphometric alterations of PTSD a still open question.

We therefore in this study performed a VBM meta-analysis on GM changes of different PTSD subtypes, i.e., single-incident vs. prolonged trauma types^{4–6}. Different from the previous reports^{11,12,20,21}, we aimed to elucidate the trauma-specific GM volumetric alterations and their association with the demographics and clinical characteristics of PTSD patients. In specific, we carefully examined published VBM studies comparing PTSD with TEC and included 16 studies with various kinds of trauma (Table 1). We then used a coordinate-based meta-analytic technique called anisotropic effect-size signed differential mapping (AES-SDM) to explore the consistent GM volumetric alterations in PTSD. Subsequently, subgroup analyses were performed to investigate the trauma-specific GM changes of two trauma types, i.e., single-incident and prolonged trauma. Finally, association between GM alterations and Clinician-Administered PTSD Scale (CAPS) scores were also investigated.

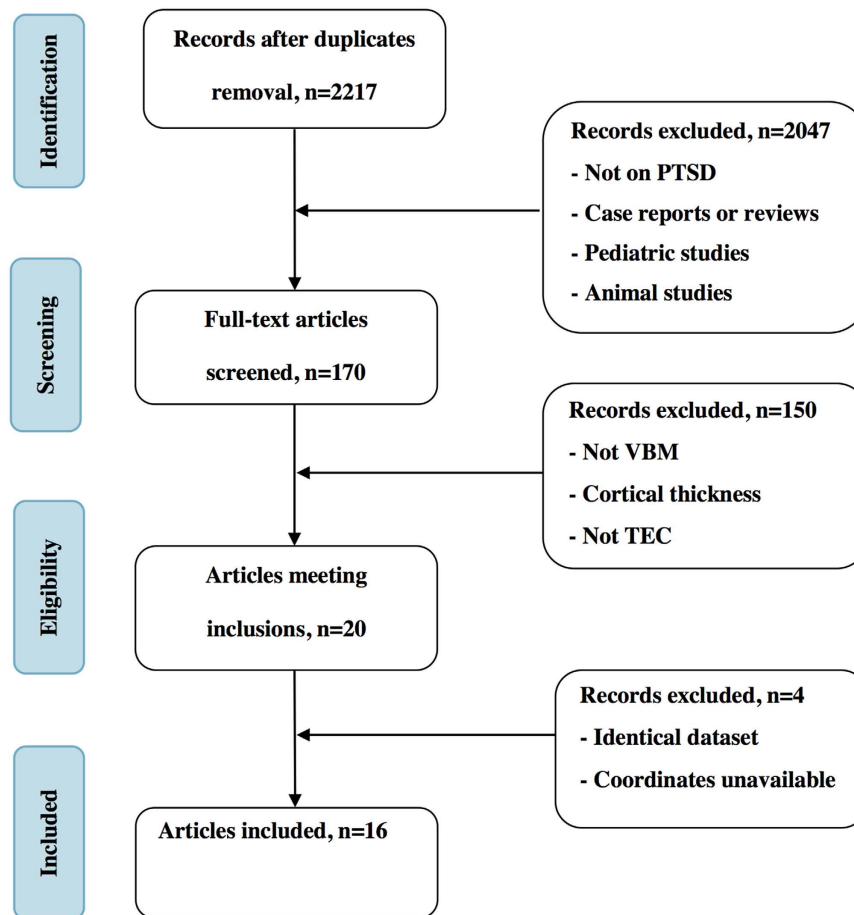


Figure 1. Flowchart of the literature selection in the present study.

Results

Included studies and sample characteristics. Figure 1 shows the flowchart of our study selection procedure and the resultant studies after each step. As shown, our search strategy identified 2217 studies after removal of duplicates. No additional relevant articles were included by inspecting the references of included articles. Most studies (2047 out of 2217) did not meet the inclusion criteria based on inspections of their titles and/or abstracts. Two studies^{22,23} were excluded since they used the same dataset with another study¹⁸, whose statistical analysis, however, was stricter. A similar issue was found for studies by Chen and Zhang^{13,24}, and the latter was also chosen due to stricter statistical analysis. After full-text inspection, 16 studies met our inclusion criteria and were included in our final meta-analysis^{13,14,18,19,25–36}. These studies recruited 246 PTSD patients (mean age: 38.7 years old) and 347 TECs (mean age: 38.3 years old) in total. Their clinical and demographic information is summarized in Table 1. Notably, nine of these studies recruited patients by single-incident traumas including accident and natural disaster, and seven studies by prolonged traumas including combat, disease, rape, and refugee.

Pooled meta-analysis. As shown in Fig. 2a, a group comparison between PTSD and TEC revealed GMRs mostly in the prefrontal-limbic-striatal system, including bilateral anterior cingulate cortex (ACC), medial prefrontal cortex (mPFC), striatum, insula, amygdala, and hippocampus. Detailed information of general GMR regions (the MNI coordinates, SDM effect sizes, and Broadman areas) is summarized in Table 2. No GM increases were found in PTSD brains.

Subgroup meta-analyses of different traumas. Subgroup analysis in PTSD patients by single-incident traumas (9 studies, 129 PTSD patients, and 137 TECs) revealed GMRs in bilateral mPFC, ACC, insula and striatum, left hippocampus and amygdala, as depicted in Fig. 2b. In contrast, subgroup analysis of PTSD patients by prolonged traumas (7 studies, 117 PTSD patients, and 210 TECs) revealed GMRs in the left insula, striatum, amygdala and MTG, (shown in Fig. 2c). For detailed information (e.g., the MNI coordinates, SDM effect sizes and Broadman areas), please refer to Table 2.

Heterogeneity and publication bias analyses. Heterogeneity analysis showed that no regions in our pooled meta-analysis have significant heterogeneity between studies. Analysis of publication bias showed that the Egger test is insignificant for the right ACC ($p = 0.264$), the right mPFC ($p = 0.409$), the right striatum ($p = 0.439$), the right insula ($p = 0.593$), the right hippocampus ($p = 0.957$), the right amygdala ($p = 0.524$), the

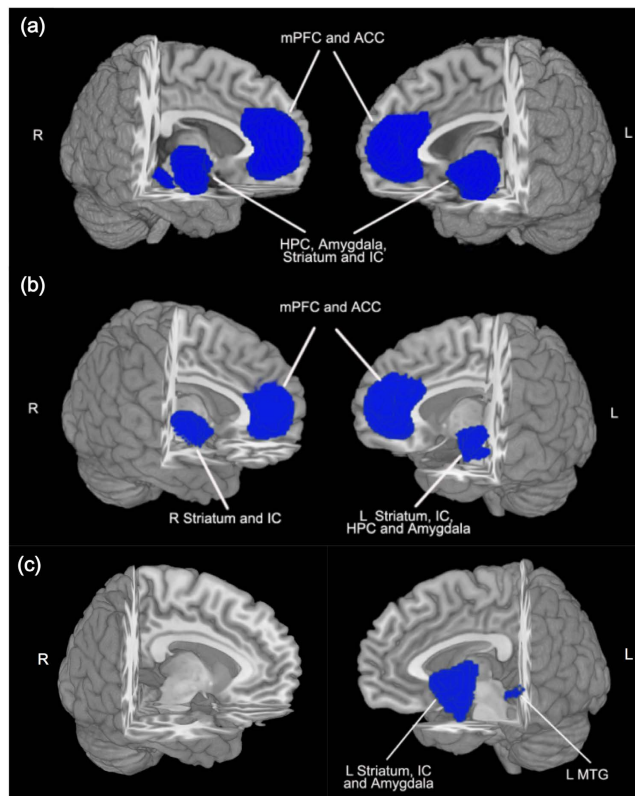


Figure 2. The brain regions exhibiting GM reduction in PTSD compared with TEC in the pooled meta-analysis (a), and subgroup analyses by single-incident (b) and prolonged trauma (c). The regions are displayed in a 3D brain, with part of the left or right hemisphere removed. Blue areas depict significant GMRs by AES-SDM in PTSD compared with TEC. Abbreviations: mPFC, medial prefrontal cortex; ACC, anterior cingulate cortex; HPC, hippocampus; IC, insula cortex; MTG, middle temporal gyrus; L, left; R, right.

left mPFC ($p = 0.083$), the left striatum ($p = 0.894$), the left insula ($p = 0.458$), the left hippocampus ($p = 0.457$), the left amygdala ($p = 0.626$), except for the left ACC ($p = 0.021$).

Sensitivity analysis. Whole-brain jack-knife sensitivity analysis showed that GMRs in bilateral ACC and mPFC were highly replicable and well preserved throughout all combinations. The findings in left striatum, insula, hippocampus, and amygdala remained significant in all but one combination, which is the same for the findings in right striatum, insula, and amygdala. The findings in the right hippocampus remained significant in all but two combinations.

Meta-regression analysis. Symptom severity (CAPS scores) of PTSD patients was negatively associated with GM changes in bilateral ACC and mPFC, as shown in Fig. 3 ($Z = -2.424$, $P < 0.0001$). The percentage of female PTSD patients and the mean age of patients were not significantly associated with PTSD-related GM changes, at least not linearly.

Discussion

In the present study, we conducted a voxel-wise meta-analysis using AES-SDM for general and trauma-specific GM alteration patterns of PTSD brains compared with those of TECs. Our pooled meta-analysis obtained a general pattern of GMR in PTSD compared with TEC, mostly in bilateral mPFC, ACC, striatum, insula, hippocampus, and amygdala. In terms of trauma-specific GM alteration patterns, PTSD patients by single-incident traumas were characterized by GMRs in bilateral mPFC, ACC, striatum, and insula, the left hippocampus, and amygdala. While patients by prolonged traumas demonstrated quite a different pattern of GMR, with most affected regions found in the left striatum, insula, amygdala and MTG. In addition, GM alterations in the bilateral ACC and mPFC were negatively correlated with the severity of PTSD symptoms as measured by CAPS.

General GMRs in PTSD. Our pooled meta-analysis indicates that general brain regions affected by PTSD are mostly located in the prefrontal-limbic-striatal system. The prefrontal-limbic circuit is associated with fear conditioning and has been widely reported to exhibit both anatomical and functional deficits in PTSD patients^{12,37}. These deficits may lead to inability to effectively control attention and respond to trauma-related stimuli. Accompanied with the deficits in top-down inhibitory control of PTSD patients, increased amygdala response promote trauma recollections and hyperarousal, and abnormal hippocampal function in learning and memory³⁸.

Brain regions (PTSD < TEC)	MNI coordinates			SDM z score	P value	Voxels, n	Cluster breakdown (voxels, n)
	X	Y	Z				
Pooled meta-analysis of all included studies							
L anterior cingulate/ paracingulate gyri, BA32	-2	46	12	-2.494	0.000001311	3495	L anterior cingulate/paracingulate gyri, BA10,11, 24, 25, 32(867) L median cingulate/paracingulate gyri, BA24,32(135) L superior frontal gyrus, medial, BA9, 10, 11, 24, 32(676) L superior frontal gyrus, medial orbital, BA10, 11(304) L gyrus rectus, BA11(13) R anterior cingulate/paracingulate gyri, BA10,11, 25, 32(747) R superior frontal gyrus, medial, BA9,10 (369) R superior frontal gyrus, medial orbital, BA10, 11(325) R median cingulate/paracingulate gyri, BA32(53) R gyrus retcus, BA11(6)
L lenticular nucleus, putamen, BA48	-28	-2	-2	-2.427	0.000002563	1701	L lenticular nucleus, putamen, BA48 (849) L insula, BA48 (282) L amygdala, BA20, 28, 34, 36, 48 (227) L hippocampus, BA20, 28, 34, 35(94) L superior temporal gyrus, BA34, 48 (152) L olfactory, BA34, 48 (87) L parahippocampus, BA34,36(10)
R insula, BA48	40	-2	-4	-1.805	0.000422657	1040	R insula, BA48(513) R lenticular nucleus, putamen, BA48 (251) R superior temporal gyrus, BA20, 21 (209) R amygdala, BA34, 36, 48 (67)
R hippocampus, BA20	36	-30	-10	-1.515	0.002690315	68	R hippocampus, BA20 (61) R parahippocampus, BA20,37 (7)
Subgroup meta-analysis of single-incident trauma							
L superior frontal gyrus, medial. BA32	-8	52	18	-2.338	0.000006437	2902	L superior frontal gyrus, medial, BA9, 10, 11,32(830) L anterior cingulate/paracingulate gyri, BA10, 11, 24, 25, 32(756) L superior frontal gyrus, medial orbital, BA10 (119) L cingulum(92) R superior frontal gyrus, medial, BA9,10, 32 (436) R anterior cingulate/paracingulate gyri, BA11, 24, 25, 32(505) R superior frontal gyrus, medial orbital, BA11 (126) R cingulum(38)
R insula, BA48	40	-12	8	-1.487	0.001923442	518	R insula, BA48(200) R lenticular nucleus, putamen, BA48 (267) R striatum(51)
L insula, BA48	-38	-10	-2	-1.614	0.00083065	388	L insula, BA48(133) L lenticular nucleus, putamen, BA48 (105) L striatum, (93) L hippocampus, BA20 (38) L amygdala, BA34 (19)
Subgroup meta-analysis of prolonged trauma							
L lenticular nucleus, putamen, BA48	-32	0	-2	-1.921	0.000012875	1314	L lenticular nucleus, putamen, BA11, 34, 48 (459) L insula, BA38, 47, 48 (470) L striatum, (204) L amygdala, BA20, 34, 36, 38, 48 (114) L olfactory cortex, BA34, 48(48) L temporal pole, superior temporal gyrus, BA34, 38(19)
L middle temporal gyrus, BA21	-62	-32	-4	-1.186	0.003495157	26	L middle temporal gyrus, BA21(26)

Table 2. Regional GM differences between PTSD patients and TEC subjects. Abbreviations: BA, Brodmann area; PTSD, posttraumatic stress disorder; TEC, trauma-exposed control; L, left; R, right; SDM, signed differential mapping.

Meanwhile, striatal regions, playing critical role in behavior reinforcement and punishment, have also been widely reported in both structural and functional PTSD studies^{39,40}. For example, a study of high-risk population

of PTSD showed significantly GM volume alterations in the prefrontal-limbic-striatal circuit⁴¹. Consistent with the structural MRI changes, functional MRI studies in survivors who had recently experienced severe emotional trauma also demonstrated functional alterations in the prefrontal-limbic and striatal areas, and attenuated connectivity among limbic and striatal networks^{42,43}. Our analysis replicates the structural findings and further supports that, deficits in the prefrontal-limbic circuit are the core neural correlates of PTSD.

Specific GMRs by single-incident traumas. Single-incident traumas are acute stressful events, limited in time⁵. For PTSD caused by this type of trauma, our subgroup meta-analysis revealed that GMRs were primarily located in the bilateral mPFC, ACC, striatum, insula, the left hippocampus and amygdala. Both human and animal studies have demonstrated that even mild traumatic stress can rapidly impair the function of mPFC and improve the function of amygdala and hippocampus^{12,44}. When the stress goes to severer, hippocampal functions can also be impaired⁴⁵, accompanied with hyperfunction of amygdala and striatum^{46,47}. In a word, severe acute stressors may impair PFC-mediated cognitive/emotional functions and switch the control of behaviour and emotion to more primitive brain circuits, i.e., the limbic system and striatum⁴⁴. For ACC, a vital brain region associated with fear conditioning, its functional disruption may facilitate the core symptoms of PTSD. As shown in a longitudinal study⁴⁸, PTSD patients with aggravated symptoms showed accelerated atrophy in the ACC, which is consistent with our finding that symptom severity (CAPS scores) of PTSD patients was negatively associated with GM changes in bilateral ACC and mPFC. Taken together, mPFC-limbic-striatal system may be the primary affected brain system associated with acute single-incident traumas.

Specific GMRs by prolonged traumas. In contrast to the above subgroup, PTSD patients having prolonged traumas revealed a different pattern of GMR, which mainly involved left striatum, insula, amygdala and MTG, but not the mPFC structures. This difference may be due to that the long-term fear expression induced by prolonged and repetitive trauma exposure may not be mediated by the mPFC-limbic network⁴⁹, but the striatum and insula instead³⁹. Increased functional connectivity between striatum and insular cortices during repeated exposure to the traumatic memories has been reported³⁹. We believe that these hyper activities are closely related to the GMRs in the striatum and insula, although it is unclear whether the GMRs induced the hyper functional activity or the opposite. In addition, PTSD patients with prolonged traumatic experiences often show a dissociation syndrome, in contrast to PTSD patients by acute or single traumatic events³⁷. Interestingly, this dissociation syndrome is reported to involve striatum, insula and amygdala^{50,51}, which happen to exhibit GMR in our analysis. Finally, the long-term repeated exposure to different kinds of trauma may impair memory processing in the patients, as shown by the GMR in MTG. All these results indicate that PTSD by prolonged traumas exhibits a very different GMR pattern compared with single-incident induced ones, suggesting different neural mechanism may underlie PTSD by prolonged traumas.

Differences between subtypes. Our results demonstrated that for PTSD patients by acute single-incident traumas, GMRs generally appear in the mPFC-limbic-striatal system while for PTSD by prolonged traumas, GMRs are dominant in the limbic-striatal structures. This difference indicates that there may be different brain mechanisms underlying PTSD by different traumas. One hypothesis is that for PTSD by acute single-incident traumas, mPFC is easily impaired due to its susceptibility to uncontrollable stress^{12,44}. Accompanied are hyper-functions of primitive brain structure on emotional regulation, i.e., amygdala, insula and striatum⁴⁴. These primitive regions, however, can also be damaged after longtime exposure to stress, as evidenced by our findings of the GMRs in PTSD by prolonged traumas and some other studies^{39,52}.

Notably, there are some potential confounds that might contribute to the resultant differences in GMRs of the subtypes, such as gender and illness duration. Males with PTSD have been found to exhibit increased activation in left ACC during extinction recall compared with female PTSD patients⁵³. Besides, some studies on GM changes in PTSD have provided evidence that illness duration was significantly associated with right hippocampal volume⁵⁴.

Limitations and future directions. Our results revealed that the regions of GMR in PTSD are subjected to trauma. However, the findings should be interpreted in light of several possible limitations of the present study. First, only sixteen studies are included in this study. This limited number of studies prevents us from more detailed subgroup meta-analyses. It may also affect the generalisation of our results. Second, it should be considered that gender and illness duration differences might confound the between-trauma findings in the PTSD group. Third, whether the GMRs are predispositions or consequences of PTSD is difficult to elucidate. Further studies with longitudinal structural changes may be necessary to disentangle this. Fourth, some original studies included in our meta-analysis did not exclude PTSD with other psychiatric disorders (e.g., major depressive disorder). Finally, publication bias was shown in the left ACC, and relevant findings should be interpreted with caution.

Conclusion

In this study, we performed a quantitative voxel-wise meta-analysis of GM changes in PTSD by different traumas using AES-SDM, and found that GMR regions were generally located in the prefrontal-limbic-striatal system. Notably, subgroup analyses revealed that the GMR patterns were associated with specific trauma categories. This study provides further evidences of different neural correlates underlying PTSD by different traumas, and suggests that stratified diagnosis and treatment of PTSD are necessary in clinics.

Methods

Study inclusion and exclusion. A systematic search strategy¹² was used to identify relevant studies indexed by PubMed, Cochrane Library, EBSCO, Web of Science, and ScienceDirect by November 2015. Keywords were

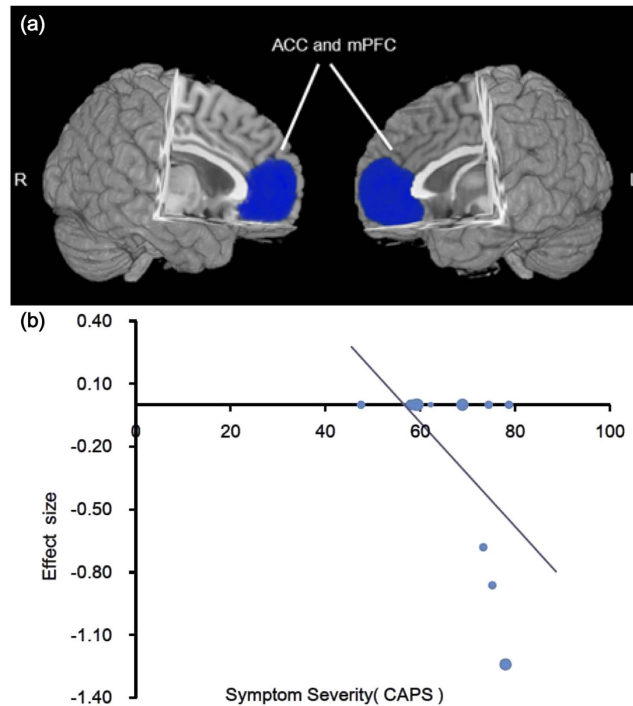


Figure 3. Association between CAPS and GM alterations in PTSD. (a) The brain areas associating with CAPS scores in PTSD patients; (b) relationship between CAPS scores and GM alterations of regions in a. The effect sizes were extracted from the peak of maximum slope significance. Each study is represented by a dot. The dot size reflects the sample size. Large dots are for studies with more than 20 patients; medium dots: 10–20 patients; and small dots: <10 patients. The blue areas depict significant GMRs by AES-SDM in PTSD compared with TEC. Abbreviations: mPFC, medial prefrontal cortex; ACC, anterior cingulate cortex; CAPS, Clinician-Administered PTSD Scale; L, left; R, right.

set as (1): “posttraumatic stress disorder” or “PTSD” or “stress” or “trauma” or “maltreatment” or “assault” or “war” or “combat” or “accident” or “disaster” or “veteran” or “abuse”, crossed with (2): “voxel-based morphometry” or “VBM” or “morphometry” or “volumetric” or “grey matter”. References in resultant PTSD review and meta-analysis articles were manually examined for possible inclusion.

Studies were included according to the following criteria: (1) used VBM to analyze brain GM changes in PTSD patients; (2) compared PTSD patients with TECs; (3) clearly reported traumatic types. For studies reported both corrected and uncorrected results, only the corrected ones were used in the subsequent analyses.

A candidate study was excluded if (1) it belonged to reviews, case reports or meta-analysis studies; (2) full-text record is non-English or unavailable; (3) recruited patients were younger than 18 years old; (4) the included patients had co-morbidity such as headache, traumatic brain injury or other physical diseases; (5) results were based on small volume correction; (6) different thresholds were used for different brain regions, and (7) peak coordinates of reported brain regions or the trauma type could not be determined.

Quality assessment. The quality of an included study was independently assessed by two authors (L., Meng and J., Jiang), using a checklist (See Supplementary Table S1) adapted from previous meta-analytic studies^{55,56}. This 12-item checklist consists of quality assessments for diagnostic procedures, demographic characterization, sample size, imaging and analysis technique, and consistency between conclusions and results. Each item was scored 1, 0.5 or 0 if the corresponding criterion was fully met, partially met or unfulfilled, respectively. Finally, consensus scores were obtained and are summarized in Table 1.

Meta-analysis of regional differences in GM. Regional differences in GM between PTSD patients and TECs were analyzed using AES-SDM (<http://www.sdmproject.com>). This is a well-established meta-analysis toolkit with following features: (1) reconstruction of positive and negative differences in the same signed differential map to avoid any voxel appearing significant in opposite directions; (2) using effect sizes to combine reported peak coordinates with statistical parametric maps; (3) applying complementary analyses such as sensitivity, subgroup and meta-regression analysis to assess the robustness and heterogeneity of the results⁵⁷. In addition, anisotropic kernels were adopted to assign different values to the different neighboring voxels based on the spatial correlation between them, allowing exhaustive and accurate meta-analysis⁵⁸.

A pooled meta-analysis using all included studies was performed first for the general GM alteration of PTSD by various traumas. Then, two subgroup meta-analyses by different trauma types (i.e., single-incident and prolonged trauma) were conducted for the trauma-specific GM alteration. For all meta-analyses, the statistical significance of each voxel was determined using standard randomization tests⁵⁷.

Heterogeneity and publication bias analysis. In the pooled meta-analysis, the statistical heterogeneity of individual clusters between studies was examined using a random effect model with Q statistic⁵⁷. We examined the possibility of publication bias for GM changes using Egger test⁵⁹.

Sensitivity analysis. In order to test the replicability of the results, a systematic whole-brain voxel-wise jack-knife sensitivity analysis was performed⁵⁷. Pooled analysis repeated the main statistical analysis for sixteen times, discarding one different study each time. If a brain region remained significant in all or most of the combinations of studies, it was considered as highly replicable⁶⁰.

Meta-regression analysis. Several relevant socio-demographic and clinical characteristics were listed in Table 1, including the percentage of female PTSD patients in each study, the mean age of patients and the CAPS scores. Their potential effects towards the GM alterations were explored using meta-regression⁵⁷. Notably, the time since trauma could not be explored since only a few studies (less than nine) reported such information⁶⁰. In order to minimize the detection of spurious regions, we reduced the p-value to 0.0005 for abnormality detection in both the slope and one of the extremes of the regressor and discarded findings not from the main analysis⁶⁰.

References

- Pitman, R. K. *et al.* Biological studies of post-traumatic stress disorder. *Nature reviews. Neuroscience* **13**, 769–787 (2012).
- American Psychiatric Association. *Diagnostic And Statistical Manual Of Mental Disorders (5th end)* 274 (2013).
- Santiago, P. N. *et al.* A systematic review of PTSD prevalence and trajectories in DSM-5 defined trauma exposed populations: intentional and non-intentional traumatic events. *Plos one* **8**, e59236 (2013).
- van der Kolk, B. A., Roth, S., Pelcovitz, D., Sunday, S. & Spinazzola, J. Disorders of extreme stress: The empirical foundation of a complex adaptation to trauma. *Journal of traumatic stress* **18**, 389–399 (2005).
- Terr, L. C. Childhood traumas: an outline and overview. *The American journal of psychiatry* **148**, 10–20 (1991).
- Cody, M. W. & Beck, J. G. Physical injury, PTSD symptoms, and medication use: examination in two trauma types. *Journal of traumatic stress* **27**, 74–81 (2014).
- Breslau, N. Epidemiologic studies of trauma, posttraumatic stress disorder, and other psychiatric disorders. *Canadian journal of psychiatry. Revue canadienne de psychiatrie* **47**, 923–929 (2002).
- Perrin, M. *et al.* Determinants of the development of post-traumatic stress disorder, in the general population. *Soc Psychiatry Psychiatr Epidemiol* **49**, 447–457 (2014).
- Husarewycz, M. N., El-Gabalawy, R., Logsetty, S. & Sareen, J. The association between number and type of traumatic life experiences and physical conditions in a nationally representative sample. *General hospital psychiatry* **36**, 26–32 (2014).
- Ditlevsen, D. N. & Elklit, A. Gender, trauma type, and PTSD prevalence: a re-analysis of 18 nordic convenience samples. *Annals of general psychiatry* **11**, 26 (2012).
- Boccia, M. *et al.* Different neural modifications underpin PTSD after different traumatic events: an fMRI meta-analytic study. *Brain imaging and behavior* **10**, 226–237 (2016).
- Li, L. *et al.* Grey matter reduction associated with posttraumatic stress disorder and traumatic stress. *Neuroscience and biobehavioral reviews* **43**, 163–172 (2014).
- Zhang, J. *et al.* Decreased gray matter volume in the left hippocampus and bilateral calcarine cortex in coal mine flood disaster survivors with recent onset PTSD. *Psychiatry Res* **192**, 84–90 (2011).
- Kasai, K. *et al.* Evidence for acquired pregenual anterior cingulate gray matter loss from a twin study of combat-related posttraumatic stress disorder. *Biological psychiatry* **63**, 550–556 (2008).
- Ashburner, J. & Friston, K. J. Voxel-Based Morphometry—The Methods. *NeuroImage* **11**, 805–821 (2000).
- Schmidt-Wilcke, T., Poljansky, S., Hierlmeier, S., Hausner, J. & Ibach, B. Memory performance correlates with gray matter density in the ento-/perirhinal cortex and posterior hippocampus in patients with mild cognitive impairment and healthy controls — A voxel based morphometry study. *NeuroImage* **47**, 1914–1920 (2009).
- Sasaki, H. *et al.* Structural and diffusional brain abnormality related to relatively low level alcohol consumption. *NeuroImage* **46**, 505–510 (2009).
- Li, L. *et al.* Magnetic resonance imaging and magnetic resonance spectroscopy study of deficits in hippocampal structure in fire victims with recent-onset posttraumatic stress disorder. *Can J Psychiatry* **51**, 431–437 (2006).
- Herringa, R., Phillips, M., Almeida, J., Insana, S. & Germain, A. Post-traumatic stress symptoms correlate with smaller subgenual cingulate, caudate, and insula volumes in unmedicated combat veterans. *Psychiatry Res.* **203**, 139–145 (2012).
- Meng, Y. *et al.* Anatomical deficits in adult posttraumatic stress disorder: a meta-analysis of voxel-based morphometry studies. *Behav Brain Res.* **270**, 307–315 (2014).
- Kuhn, S. & Gallinat, J. Gray matter correlates of posttraumatic stress disorder: a quantitative meta-analysis. *Biological psychiatry* **73**, 70–74 (2013).
- Chen, S. *et al.* Gray matter density reduction in the insula in fire survivors with posttraumatic stress disorder: a voxel-based morphometric study. *Psychiatry research* **146**, 65–72 (2006).
- Chen, S., Li, L., Xu, B. & Liu, J. Insular cortex involvement in declarative memory deficits in patients with post-traumatic stress disorder. *BMC psychiatry* **9**, 39 (2009).
- Chen, Y. *et al.* Different regional gray matter loss in recent onset PTSD and non PTSD after a single prolonged trauma exposure. *PLoS One* **7**, e48298 (2012).
- Bryant, R. A. *et al.* Rostral anterior cingulate volume predicts treatment response to cognitive-behavioural therapy for posttraumatic stress disorder. *J Psychiatry Neurosci* **33**, 142–146 (2008).
- Chao, L. L., Lenoci, M. & Neylan, T. C. Effects of post-traumatic stress disorder on occipital lobe function and structure. *Neuroreport* **23**, 412–419 (2012).
- Cortese, B. M., McConnell, P. A., Froeliger, B., Leslie, K. & Uhde, T. W. Burning odor-elicited anxiety in OEF/OIF combat veterans: Inverse relationship to gray matter volume in olfactory cortex. *Journal of psychiatric research* **70**, 58–66 (2015).
- Eckart, C. *et al.* Structural alterations in lateral prefrontal, parietal and posterior midline regions of men with chronic posttraumatic stress disorder. *J Psychiatry Neurosci* **36**, 176–186 (2011).
- Felmingham, K. *et al.* Duration of posttraumatic stress disorder predicts hippocampal grey matter loss. *Neuroreport* **20**, 1402–1406 (2009).
- Hakamata, Y. *et al.* Structure of orbitofrontal cortex and its longitudinal course in cancer-related post-traumatic stress disorder. *Neurosci Res* **59**, 383–389 (2007).
- Nardo, D. *et al.* Gray matter volume alterations related to trait dissociation in PTSD and traumatized controls. *Acta Psychiatr Scand* **128**, 222–233 (2013).
- Nardo, D. *et al.* Gray matter density in limbic and paralimbic cortices is associated with trauma load and EMDR outcome in PTSD patients. *Journal of psychiatric research* **44**, 477–485 (2010).

33. Rocha-Rego, V. *et al.* Decreased premotor cortex volume in victims of urban violence with posttraumatic stress disorder. *PLoS one* **7**, e42560 (2012).
34. Tan, L. *et al.* Brain structure in post-traumatic stress disorder: A voxel-based morphometry analysis. *Neural regeneration research* **8**, 2405–2414 (2013).
35. Yamasue, H. *et al.* Voxel-based analysis of MRI reveals anterior cingulate gray-matter volume reduction in posttraumatic stress disorder due to terrorism. *Proceedings of the National Academy of Sciences of the United States of America* **100**, 9039–9043 (2003).
36. Sui, S. G. *et al.* Abnormal grey matter in victims of rape with PTSD in Mainland China: a voxel-based morphometry study. *Acta neuropsychiatrica* **22**, 118–126 (2010).
37. Lanius, R. A. *et al.* Emotion modulation in PTSD: Clinical and neurobiological evidence for a dissociative subtype. *Am J Psychiatry* **167**, 640–647 (2010).
38. Patel, R., Spreng, R. N., Shin, L. M. & Girard, T. A. Neurocircuitry models of posttraumatic stress disorder and beyond: a meta-analysis of functional neuroimaging studies. *Neuroscience and biobehavioral reviews* **36**, 2130–2142 (2012).
39. Cisler, J. M. *et al.* Functional reorganization of neural networks during repeated exposure to the traumatic memory in posttraumatic stress disorder: an exploratory fMRI study. *Journal of psychiatric research* **48**, 47–55 (2014).
40. Hoexter, M. Q. *et al.* Higher striatal dopamine transporter density in PTSD: an *in vivo* SPECT study with [(99m)Tc]TRODAT-1. *Psychopharmacology* **224**, 337–345 (2012).
41. Lui, S. *et al.* Brain structural plasticity in survivors of a major earthquake. *J Psychiatry Neurosci* **38**, 381–387 (2013).
42. Lui, S. *et al.* High-field MRI reveals an acute impact on brain function in survivors of the magnitude 8.0 earthquake in China. *Proceedings of the National Academy of Sciences of the United States of America* **106**, 15412–15417 (2009).
43. Du, M. Y. *et al.* Altered functional connectivity in the brain default-mode network of earthquake survivors persists after 2 years despite recovery from anxiety symptoms. *Soc Cogn Affect Neurosci* **10**, 1497–1505 (2015).
44. Arnsten, A. F. Stress signalling pathways that impair prefrontal cortex structure and function. *Nature reviews. Neuroscience* **10**, 410–422 (2009).
45. Kim, J. J. & Yoon, K. S. Stress: metaplastic effects in the hippocampus. *Trends in neurosciences* **21**, 505–509 (1998).
46. Elliott, A. E. & Packard, M. G. Intra-amygdala anxiogenic drug infusion prior to retrieval biases rats towards the use of habit memory. *Neurobiology of learning and memory* **90**, 616–623 (2008).
47. Packard, M. G. & Teather, L. A. Amygdala modulation of multiple memory systems: hippocampus and caudate-putamen. *Neurobiology of learning and memory* **69**, 163–203 (1998).
48. Cardenas, V. A. *et al.* Changes in brain anatomy during the course of posttraumatic stress disorder. *Psychiatry research* **193**, 93–100 (2011).
49. Arruda-Carvalho, M. & Clem, R. L. Prefrontal-amygdala fear networks come into focus. *Frontiers in systems neuroscience* **9**, 145 (2015).
50. Mickleborough, M. J. *et al.* Effects of trauma-related cues on pain processing in posttraumatic stress disorder: an fMRI investigation. *J Psychiatry Neurosci* **36**, 6–14 (2011).
51. Nicholson, A. A. *et al.* Unique insula subregion resting-state functional connectivity with amygdala complexes in posttraumatic stress disorder and its dissociative subtype. *Psychiatry Res* **250**, 61–72 (2016).
52. van Wingen, G. A., Geuze, E., Vermetten, E. & Fernandez, G. Perceived threat predicts the neural sequelae of combat stress. *Molecular psychiatry* **16**, 664–671 (2011).
53. Shvil, E. *et al.* Sex differences in extinction recall in posttraumatic stress disorder: a pilot fMRI study. *Neurobiology of learning and memory* **113**, 101–108 (2014).
54. Chao, L. L., Yaffe, K., Samuelson, K. & Neylan, T. C. Hippocampal volume is inversely related to PTSD duration. *Psychiatry research* **222**, 119–123 (2014).
55. Chen, G. *et al.* Disorganization of white matter architecture in major depressive disorder: a meta-analysis of diffusion tensor imaging with tract-based spatial statistics. *Scientific reports* **6**, 21825 (2016).
56. Shepherd, A. M., Matheson, S. L., Laurens, K. R., Carr, V. J. & Green, M. J. Systematic meta-analysis of insula volume in schizophrenia. *Biological psychiatry* **72**, 775–784 (2012).
57. Radua, J. *et al.* A new meta-analytic method for neuroimaging studies that combines reported peak coordinates and statistical parametric maps. *European psychiatry: the journal of the Association of European Psychiatrists* **27**, 605–611 (2012).
58. Radua, J. *et al.* Anisotropic kernels for coordinate-based meta-analyses of neuroimaging studies. *Frontiers in psychiatry* **5**, 13 (2014).
59. Egger, M., Davey Smith, G., Schneider, M. & Minder, C. Bias in meta-analysis detected by a simple, graphical test. *BMJ (Clinical research ed.)* **315**, 629–634 (1997).
60. Radua, J. & Mataix-Cols, D. Voxel-wise meta-analysis of grey matter changes in obsessive-compulsive disorder. *The British journal of psychiatry: the journal of mental science* **195**, 393–402 (2009).

Acknowledgements

This work was supported by the National Natural Science Foundation (Grant Nos 81401477, 81030027, 81227002 and 81220108013), National Key Technologies R&D Program (Program No. 2012BAI01B03) and Program for Changjiang Scholars and Innovative Research Team in University (PCSIRT, Grant No. IRT1272) of China. The authors would like to thank Chandan Shah for proofreading.

Author Contributions

Q.G., K.L. and L.M. conceived the project. L.M. designed the protocol and wrote the main manuscript. L.M. and J.J. obtained the data. J.L., Y.Z. and W.W. analyzed the results. All authors reviewed the manuscript. K.L., J.J. and C.J. revised the manuscript.

Additional Information

Supplementary information accompanies this paper at <http://www.nature.com/srep>

Competing financial interests: The authors declare no competing financial interests.

How to cite this article: Meng, L. *et al.* Trauma-specific Grey Matter Alterations in PTSD. *Sci. Rep.* **6**, 33748; doi: 10.1038/srep33748 (2016).



This work is licensed under a Creative Commons Attribution 4.0 International License. The images or other third party material in this article are included in the article's Creative Commons license, unless indicated otherwise in the credit line; if the material is not included under the Creative Commons license, users will need to obtain permission from the license holder to reproduce the material. To view a copy of this license, visit <http://creativecommons.org/licenses/by/4.0/>