

RESEARCH

Open Access

Evaluation of five different suture materials in the skin of the earthworm (*Lumbricus terrestris*)

Melissa A Salgado¹, Gregory A Lewbart^{2*}, Larry S Christian³, Emily H Griffith⁴ and Jerry McHugh Law²

Abstract

The purpose of this study was to determine which suture material is the most appropriate for dermal closure of terrestrial annelids. This paper describes the tissue reactions of the earthworm, *Lumbricus terrestris*, to five different types of suture materials in order to determine which suture material is the most appropriate for dermal closure. Silk, monofilament nylon, polydioxanone, polyglactin 910, and chromic gut were studied. There was mild to moderate tissue reaction to all five suture materials. In all of the biopsies wound-healing reaction consisted of aggregates of blastemal cells which appeared in various stages of dedifferentiation from the body wall. Inflammatory cells infiltrated the wound sites, reminiscent of the typical foreign body reaction in vertebrates. The results indicate polyglactin 910 would be the best suture material with regards to tissue security and reaction scores. Chromic gut occupies the next position but there were problems with suture security over time. This appears to be the first suture material performance study on a terrestrial invertebrate. The earthworm, *Lumbricus terrestris*, was chosen for its wide availability, size, and the extensive species knowledge base. The earthworm may prove to be a good surgical/suture model for economically important invertebrates such as mollusks, tunicates, and insect larval stages.

Keywords: Earthworm; Healing; Immune response; *Lumbricus terrestris*; Suture material

Introduction

Invertebrate medicine is a relatively new field with little known regarding the medical and surgical aspects of this paraphyletic group. As more veterinarians are confronted with invertebrate clinical and research challenges in laboratory and zoological settings, it will be increasingly important to develop sound surgical principles for these animals. This paper investigates the tissue reactions of a terrestrial invertebrate, *Lumbricus terrestris*, to five different types of suture materials as one step toward refining surgical techniques in invertebrates.

The purpose of this study was to determine which suture material is the most appropriate for dermal closure of terrestrial annelids. The earthworm was chosen for its wide availability, size, and our knowledge base regarding this species (Lewbart 2012). In previous studies regarding transplantation immunity in earthworms, it was demonstrated that earthworms readily accept integument autografts but always reject xenografts (Bailey

et al. 1971; Cooper 1968; Cooper 1969a; Cooper 1969b; Cooper & Roch 1986). Therefore, earthworms have a cell-mediated immune system, and are also capable of adaptive immunity (i.e., specificity and memory).

The following suture materials were investigated: 4–0 silk, monofilament nylon, polydioxanone, polyglactin 910, and chromic gut. An ideal suture material would provide good knot security, resist bacterial growth and infection, and react minimally with tissue (Fossum 2007). Tissues respond to sutures as they would any foreign material. If the inflammatory reaction to a specific suture material is reasonable, then the friability of the suture material increases, which in turn causes the sutures to fall out prematurely and increases the risk of infection and dehiscence (Stashak & Yturraspe 1978). To our knowledge, this is the first suture viability/efficacy study performed on a terrestrial invertebrate. Studies on the tissue reaction of different suture materials have been performed in cats, dogs, birds, koi fish, sea turtles, snakes, frogs, rats, and the sea hare (Anderson et al. 2010; Bellenger 1982; Bennett et al. 1997; DeNardo et al. 1996; Freeman et al. 1987; Govett et al. 2004; Greenwald et al. 1994; Hurty et al. 2002; Mcfadden et al. 2013; Park

* Correspondence: greg_lewbart@ncsu.edu

²North Carolina State University College of Veterinary Medicine, North Carolina 27607, USA

Full list of author information is available at the end of the article

et al. 2013; Postlethwait 1970; Tuttle et al. 2002; Varma et al. 1981; Wood et al. 1984). Some of these studies indicate that suture materials are tolerated similarly among species. However, there are marked anatomical and environmental differences in annelids that may result in distinctive findings. These differences include the fact that an earthworm's immune system and wound healing reaction are unlike that of vertebrate species in which suture studies have been performed. This variation may affect the severity of tissue reaction and absorption of different suture materials. Earthworms move primarily by muscular peristaltic contractions; therefore, suture material may not hold well. Earthworms also move freely through a variety of substrates, including dirt, mud, sand, decaying leaves, and even water. A clean environment may not be achieved after surgery and earthworms could be exposed to many potential pathogens that may invade the surgical site and compromised dermis.

Materials and methods

Ethics statement

This study was not under the prevue of an IACUC. Handling and sampling procedures were consistent with standard vertebrate protocols and veterinary practices.

Animals

Seventy-two earthworms, *Lumbricus terrestris*, were obtained from a commercial vendor for this study. They were randomly assigned to groups of 12, each housed in a dark plastic container with a substrate of damp soil and dead leaves. The enclosure was kept at a temperature of 20°Celsius and at 30% soil moisture content, based upon published accounts (Berry & Jordan 2001; Braun et al. 2006; Cooper 2004). They were allowed to acclimate for 1 week prior to initiating the study.

Anesthesia protocol

Each earthworm was anesthetized by immersion in 5% ethanol solution for 5 minutes (Cooper 1968; Cooper & Roch 1986; Stevenson & Beane 2010). The earthworms were then rinsed off in anesthetic-free, dechlorinated tap water at room temperature. The incision site was prepared by gently wiping the area with a sterile cotton swab.

Suture application

Surgery was performed using aseptic technique. A #15 scalpel blade was used to make a stab incision along the animal's caudal third of the body, full thickness, through the skin. Five of the six groups were assigned to have one of the following sutures (all from the same manufacturer) placed: 4-0 silk, monofilament nylon (Ethilon),

polydioxanone (PDS II), polyglactin 910 (Vicryl), chromic gut (Ethicon, A Johnson & Johnson Company, Somerville New Jersey 08876 USA). A single, simple interrupted suture was placed at the site of the stab incision. One group was assigned as a control, in which a single stab incision was performed, but no suture material was placed and healing was by second intention. The earthworms recovered from anesthesia by placing them in a shallow pool of clean water before return to their respective enclosures. The surgical sites were examined daily for gross signs of dehiscence and inflammation and graded on a scale of 0 to 5 (Table 1).

Biopsy procedures and processing

Three days after surgery, six earthworms were randomly selected from each of the six groups and anesthetized as previously described. A single 3 mm full-thickness punch biopsy of the skin at the incision site was taken, with the sutures in situ. This procedure was repeated 6 days after surgery with the remaining six earthworms from each group. The biopsy sites were left to heal by second intention with no further suture placement.

The tissue samples collected were immediately fixed in 10% neutral buffered formalin, processed routinely, embedded in paraffin, sectioned at 5 µm, and stained with haematoxylin and eosin (H&E) for examination by light microscopy. The tissue samples were randomized and evaluated blindly by a single pathologist, who scored each of the biopsies on a scale of 0 to 5 based on

Table 1 System for scoring gross and histologic tissue reaction to suture

Gross scoring system	
Score	Description
0	No deviation from incised but non-sutured site
1	Minimal edema, inflammation, and epidermal changes
2	Mild edema, inflammation, and epidermal changes
3	Moderate edema and inflammation, +/- scattered areas of necrosis
4	Moderately severe edema and inflammation, with many areas of necrosis
5	Severe edema, inflammation, and epidermal changes
Histologic scoring system	
Score	Description
0	No remarkable microscopic changes
1	Minimal changes, including inflammation and organization of wound reaction
2	Mild inflammation; well-organized wound reaction of blastemal cells
3	Moderate inflammation; more fulminant blastemal cell reaction
4	Moderately severe microscopic changes (as described above)
5	Severe microscopic changes (as described above)

degree of inflammation, epidermal changes, and edema (Table 1). The score for the control was subtracted from each suture material score to obtain the overall reaction score.

Statistical methods

The histological grades (0–5) were analyzed using ordinal logistic regression in SAS (Version 9.3, Cary, NC). The odds of a lower histological score were modeled as a function of both time (day 3 and day 6) and suture material. Exact 95% confidence intervals were calculated and compared for the percentage of sutures retained in each group at both days 3 and 6.

Results

Suture study

There was not a statistically significant time effect in the model ($p = 0.228$), but there were statistically significant differences between suture materials ($p = 0.0344$). Chromic gut, Ethilon, and Vicryl all have higher probabilities of lower histological scores than the control group ($p = 0.003$, 0.008 , and 0.006 , respectively), but do not differ significantly among themselves. PDS and silk sutures did not differ significantly from the control group ($p = 0.064$ and $p = 0.160$, respectively). There were no statistically significant differences in the percentages of sutures retained per group, but that can be attributed to small sample sizes within each group. Chromic gut, Ethilon, and PDS all have statistically significantly less than 100-percent suture retention at day 6.

As evident by the results in Tables 2 and 3, there was mild to moderate gross or microscopic response to all five suture materials. The greatest variability occurred within the gross results with scores ranging from 0.5 (silk Day 3 and Day 6) to 3.5 (polydioxanone Day 6). Polydioxanone also had a high Day 3 gross score of 2.5. Furthermore, in the polydioxanone groups, 2/6 individuals lost sutures at Day 3 and 5/6 lost sutures at Day 6. Silk displayed the most consistent results with identical

Table 2 Median overall gross suture reaction scores associated with five different suture materials in the body wall of earthworms 3 and 6 days after surgery

Suture type	3 days	6 days
	Gross	Gross
Silk	0.5	0.5
Monofilament nylon*	1.5	3
Polydioxanone**	2.5	3.5
Polyglactin 910	1	0
Chromic gut***	1.5	1.5

*Three individuals in the nylon group lost sutures by Day 6.
 **Two individuals in the polydioxanone group lost sutures by Day 3 and five individuals lost sutures by Day 6.
 ***Two individuals in the chromic gut group lost sutures by Day 6.

Table 3 Individual and mean histologic grade reaction scores associated with five different suture materials in the body wall of earthworms 3 and 6 days after surgery

	Suture reaction histologic grades (range = 0–5)						Mean severity grade:	
	*Sample #:	#1	#2	#3	#4	#5		#6
	**Slide #							
Silk	1A	3	2	3	3	3	2	2.67
	1B	4	4	4	2	3	4	3.50
Polydioxanone	2A	2	3	4	4	3	2	3.00
	2B	2	3	4	4	3	2	3.00
Polyglactin 910	3A	3	3	2	2	3	2	2.50
	3B	2	2	2	2	4	3	2.50
Chromic gut	4A	2	2	3	4	2	2	2.50
	4B	2	3	3	4	3	2	2.83
Nylon	5A	2	3	3	4	2	2	2.67
	5B	4	3	3	3	4	2	3.17
Control	6A	2	2	3	2	3	2	2.33
	6B	3	2	2	3	3	2	2.50

*Each slide (1A, 1B, etc.) contained six biopsies = one from each animal.
 **Group A (1A, 2A, etc.) was sampled 3 days after surgery; group B, 6 days after.

gross and microscopic scores for the Day 3 and 6 biopsies (no lost sutures). Polydioxanone and polyglactin 910 displayed consistent Day 3 and 6 histopathology scores of 3.0 and 2.5, respectively. It should be noted that 3/6 individuals in the Day 6 nylon group lost sutures. Polyglactin 910 showed low gross scores of 1.0 and 0 (Day 3 and 6 respectively) and all sutures were retained. The chromic gut sutures produced low gross scores (1.5) with a moderate increase in the microscopic scoring over time (2.50 to 2.83). Two individuals in the chromic gut Day 6 group lost sutures. As shown in Table 3, polyglactin 910 (Vicryl) had the lowest mean histologic severity grades, 2.50 at both time points (Figure 1), which were very close to the histologic grades of the controls. Chromic gut was the next least reactive suture material type, with mean histologic grades of 2.50 at 3 days and 2.83 at 6 days.

The microscopic changes in reaction to wounding consisted of aggregates of pale, basophilic blastemal cells and variable amounts of extracellular matrix that provided the wound closure, along with variable infiltrates of inflammatory cells. Interestingly, edema did not appear to be a prominent feature of the wound reaction (less of a vascular reaction than mammals). The blastemal cells had relatively large, round to oval nuclei and indistinct cell borders (Figure 2), whereas the inflammatory cells were predominantly coelomocytes with brightly eosinophilic cytoplasmic granules (Figure 3); these latter cells appear similar to mammalian and piscine eosinophils on an H&E stain, but were called acidophils

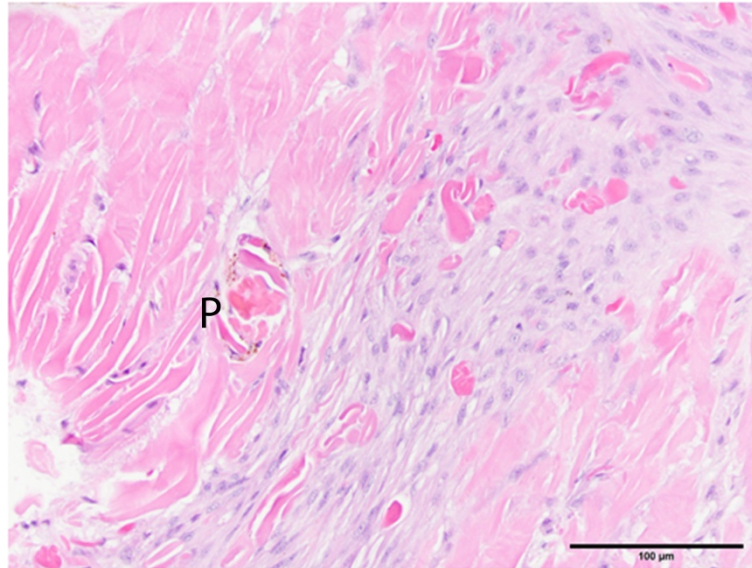


Figure 1 Grade 2 reaction to 4–0 polyglactin 910 suture in the earthworm (*Lumbricus terrestris*) body wall, showing a relatively mild blastema cell reaction with no visible infiltration of inflammatory cells. A small amount of golden brown pigment (P) at one edge indicates wound maturation. Hematoxylin and eosin stain.

by Stein et al. using Wright's stain (Stein et al. 1977). A few tissue sections had small numbers of multinucleated giant cells, similar to suture reactions in vertebrates (Figure 4).

All 72 earthworms survived the study.

Discussion

In all of the earthworm biopsies in our study, the wound healing reaction consisted of aggregates of blastemal cells

that appeared in various stages of transition (dedifferentiation) from the skeletal muscle of the body wall. This is consistent with a recent paper by Park et al. who demonstrated using another annelid (*Eisenia andrei*) that the major origin of blastemal cells is the longitudinal muscle layer of the body wall (Park et al. 2013). Variable numbers of inflammatory cells (coelomocytes), including scattered multinucleate giant cells, infiltrated the wound sites, reminiscent of the typical foreign body reaction in vertebrate

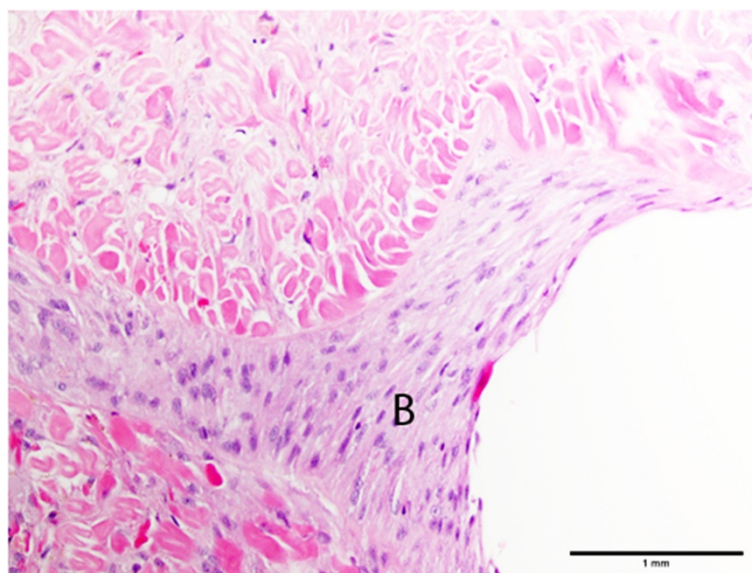


Figure 2 Cellular reaction in the body wall of the earthworm, *Lumbricus terrestris*, to 4–0 silk suture, showing layers of basophilic blastema cells (B) with round to oval to elongated nuclei and indistinct cytoplasmic borders. Hematoxylin and eosin stain.

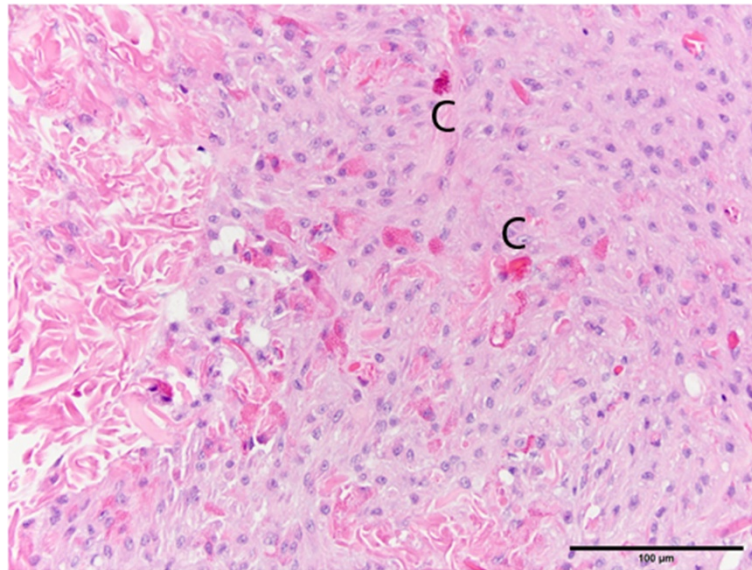


Figure 3 Grade 4 reaction to 4-0 polydioxanone suture in the earthworm (*Lumbricus terrestris*) body wall, showing infiltration of numerous eosinophilic granulocytes (coelomocytes, C) among a background of pale basophilic blastema cells. Hematoxylin and eosin stain.

animals. However, the tissues lacked the neovascularization and accompanying edema that characterizes wound healing in vertebrates. With time, the blastemal cells will redifferentiate into the various mature cell/tissue types, including epidermis (Park et al. 2013).

Our results suggest that polyglactin 910 may be the best choice for terrestrial annelids. Its low gross scores

and relatively mild/bland microscopic changes as compared to controls may indicate it's a good choice for other invertebrates with similar life styles. In addition all sutures were retained. This and monofilament suture materials produce the least amount of tissue reaction in several avian and domestic mammalian species (Bennett et al. 1997; DeNardo et al. 1996; Knowles 1976; Wood

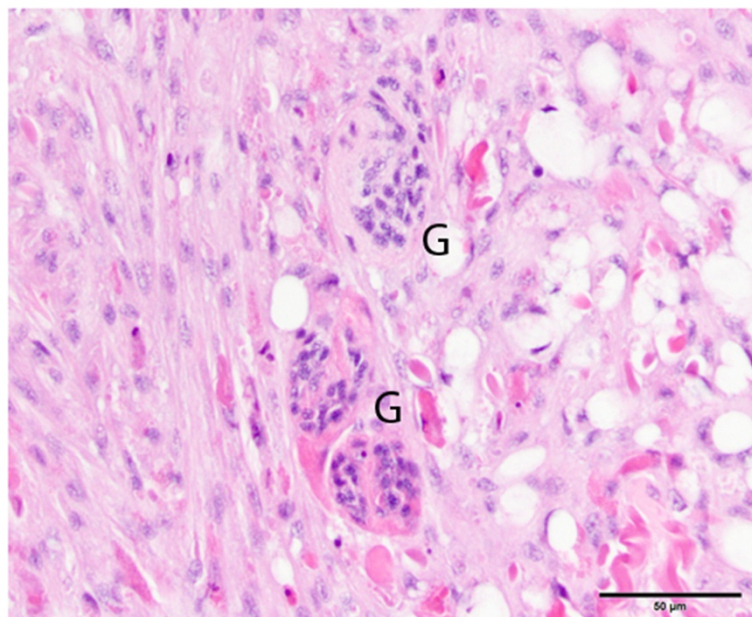


Figure 4 Grade 3 reaction to 4-0 nylon suture in the earthworm (*Lumbricus terrestris*) body wall, showing three multinucleate giant cells (G) at the edge of the blastema cell reaction to the left. Hematoxylin and eosin stain.

et al. 1984). Similar results were reported in fish, amphibians, and reptiles. Polyglyconate, a synthetic, absorbable, monofilament material, produced the least tissue reaction in koi carp (*Cyprinus carpio*), when compared with four other suture materials (Hurty et al. 2002). Consistent with these findings were favorable tissue reactions from monofilament nylon in African clawed frogs (*Xenopus laevis*) (Tuttle et al. 2002) and polyglyconate in juvenile loggerhead turtles (*Caretta caretta*) (Govett et al. 2004). Polyglyconate performed well to close a skin excisional biopsy site in a cuttlefish (*Sepia officinalis*); the sutures dislodged/dissolved on their own (Harms et al. 2006). Interestingly, this was not the case in another invertebrate, *Aplysia californica*, where silk, a braided organic material, was superior to the monofilament sutures examined (Anderson et al. 2010).

In the current study, gross silk scores were acceptable, consistent, and the sutures remained in place, but the mean histologic grade increased to 3.5/5.0 at the longer time point. These findings are in parallel with the aforementioned *A. californica* study with regards to the gross findings. While not a suture material efficacy study per se, a report on anchoring the medicinal leech (*Hirudo medicinalis*) with superficial and deep tissue braided silk found no difference in survival among these two groups and a non-sutured control group (Davila et al. 2009).

The chronic gut gross scores at Days 3 and 6 were identical (1.5) and indicate only moderate inflammation. Two subjects lost suture by Day 6, a possible disadvantage, and a reason to rank silk as a slightly better option.

The nylon gross and microscopic tissue reaction scores were mild to moderate at all time points. The Day 6 gross score of 3.0 was second in severity only to polydioxanone, which had the disadvantage of significant suture loss at both biopsy time points (Table 2). Based on these performance scores nylon and polydioxanone would be ranked in the lower tier of the five suture materials examined.

The findings of this study indicate polyglactin 910 would be the best suture material with regards to tissue security and reaction scores. Chronic gut occupies the next position due to poorer suture security over time.

Competing interests

The authors declare they have no competing interests.

Authors' contributions

MS participated in the study design, carried out the actual work with and sampling of the animals, and wrote the first draft of the paper. GL conceived of the study, participated in its design and coordination, and helped with the various manuscript drafts and revisions. LC contributed to the study design and supervised the biopsy processing and data organization. EG reviewed the data and applied the statistical analysis. JL contributed to the study design, interpreted the microscopic slides, designed the tables, and produced the photomicrographs. All authors read and approved the final manuscript.

Acknowledgements

This work was supported by the Robert J. Koller Aquatic Animal Medicine Research Endowment. We thank Drs. Doug Armstrong and Craig A. Harms for their input and assistance.

Financial support

The Robert J. Koller Aquatic Animal Medicine Research Endowment provided financial support.

Author details

¹Omaha's Henry Doorly Zoo and Aquarium, Nebraska 68107, USA. ²North Carolina State University College of Veterinary Medicine, North Carolina 27607, USA. ³North Carolina Museum of Natural Sciences, Raleigh, North Carolina 27601, USA. ⁴Department of Statistics, North Carolina State University, North Carolina 27695, USA.

Received: 10 March 2014 Accepted: 29 July 2014

Published: 11 August 2014

References

- Anderson ET, Davis AS, Law JM, Lewbart GA, Christian LS, Harms CA (2010) Gross and histological evaluation of five suture materials in the skin and subcutaneous tissue of the California sea hare (*Aplysia californica*). *J Am Assoc Lab Anim Sci* 49(1):1–5
- Bailey S, Miller BJ, Cooper EL (1971) Transplantation immunity in annelids II. Adoptive transfer of the xenograft reaction. *Immunol* 21:81–86
- Bellenger CR (1982) Sutures. Part I. The purpose of sutures and available suture materials. *Compend Contin Educ Pract Vet* 4(6):507–515
- Bennett RA, Yaeger MJ, Trapp A, Cambre RC (1997) Histological evaluation of the tissue reaction to five suture material in the body wall of rock doves (*Columba livia*). *J Avian Med Surg* 11:175–182
- Berry EC, Jordan D (2001) Temperature and soil moisture content effects on the growth of *Lumbricus terrestris* (Oligochaeta: Lumbricidae) under laboratory conditions. *Soil Biol and Biochem* 33:133–136
- Braun ME, Heatley JJ, Chitty J (2006) Clinical techniques of invertebrates. *Vet Clin North Am: Exotic Anim Prac* 9(2):205–221
- Cooper EL (1968) Transplantation immunity in annelids. I. Rejection of xenografts exchanged between *Lumbricus terrestris* and *Eisenia foetida*. *Transplant* 6(3):322–327
- Cooper EL (1969a) Specific tissue graft rejection in earthworms. *Science* 166(3911):1414–1415
- Cooper EL (1969b) Chronic allograft rejection in *Lumbricus terrestris*. *J Exp Zool* 171:69–74
- Cooper JE (2004) Invertebrate care. *Vet Clin North Am: Exotic Anim Prac* 7(2):473–486
- Cooper EL, Roch P (1986) Second-set allograft responses in the earthworm *Lumbricus terrestris*. *Transplant* 41:514–520
- Davila VJ, Hoppe IC, Landi R, Ciminello FS (2009) The effect of anchoring sutures on medicinal leech mortality. *Eplasty* 9:278–281
- DeNardo GA, Brown NO, Trenka-Benthin S, Marretta SM (1996) Comparison of seven different suture materials in the feline oral cavity. *J Am Anim Hosp Assoc* 32:463–478
- Fossum TW (2007) Biomaterials, Suturing, and Hemostasis. In: *Small Animal Surgery*, 3rd edn. Mosby Publishing, St. Louis, pp 57–66
- Freeman LJ, Pettit GD, Robinette JD, Lincoln JD, Person MW (1987) Tissue reaction to suture material in the feline Linea alba: a retrospective, prospective, and histologic study. *Vet Surg* 16(6):440–445
- Govett PD, Harms CA, Linder KE, Marsh JC, Wynneken J (2004) Effect of four different suture materials on the surgical wound healing of loggerhead sea turtles (*Caretta caretta*). *J Herpetol Med Surg* 14:6–11
- Greenwald D, Shumway S, Albear P, Gottlieb L (1994) Mechanical comparison of 10 suture materials before and after *in vivo* incubation. *J Surg Res* 56:372–377
- Harms CA, Lewbart GA, McAlarney R, Christian LS, Geissler K, Lemons C (2006) Surgical excision of mycotic (*Cladosporium* sp.) granulomas from the mantle of a cuttlefish (*Sepia officinalis*). *J Zoo Wild Med* 37:524–530
- Hurty CA, Brazik DC, Law JM, Sakamoto K, Lewbart GA (2002) Evaluation of the tissues reactions in the skin and body wall of koi (*Cyprinus carpio*) to five suture materials. *Vet Rec* 151:324–328
- Knowles RP (1976) Critique of suture materials in small animal surgery. *J Am Anim Hosp Assoc* 12:670–672

- Lewbart GA (2012) Annelids. In: Lewbart GA (ed) *Invertebrate Medicine*, 2nd edn. Wiley-Blackwell Publishing, Oxford, UK, pp 173–185
- Mcfadden MS, Bennett RA, Kinsel MJ, Mitchell MA (2013) Evaluation of the histologic reactions to commonly used suture materials in the skin and musculature of ball pythons (*Python regius*). *Am J Vet Res* 72(10):1397–1406
- Park SK, Cho S-J, Park SC (2013) Histological observations of blastema formation during earthworm tail regeneration. *Invertebr Reprod Dev* 57:165–169
- Postlethwait RW (1970) Long-term comparative study of nonabsorbable sutures. *Ann Surg* 171(6):892–898
- Sanz LE, Patterson JA, Kamath R, Willett G, Ahmed SW, Butterfield AB (1988) Comparison of Maxon suture with vicryl, chromic catgut, and PDS sutures in fascial closure in rats. *Obstet Gynecol* 71(3), Part 1:418–422
- Stashak TS, Yturraspe DJ (1978) Considerations for selection of suture materials. *Vet Surg* 7(1):48–55
- Stein E, Avtalion AR, El C (1977) The coelomocytes of the earthworm *Lumbricus terrestris*: morphology and phagocytic properties. *J Morph* 153(3):467–477
- Stevenson CG, Beane WS (2010) A low percent ethanol method for immobilizing planarians. *PLoS One* 5(12):e15310
- Tuttle AD, Law JM, Harms CA, Lewbart GC, Harvey SB (2002) Evaluation of the gross and histological reactions to five commonly used suture materials in the skin of the African clawed frog (*Xenopus laevis*). *J Am Assoc Lab Anim Sci* 45:22–26
- Varma S, Johnson LW, Ferguson HL, Lumb WW (1981) Tissue reaction to suture materials in infected surgical wounds- a histopathologic evaluation. *Amer J Vet Res* 42(4):563–570
- Wood KM, Collins JE, Walshaw R (1984) Tissue reaction to non-absorbable suture materials in the canine Linea alba: a histological evaluation. *J Am Anim Hosp Assoc* 20:39–44

doi:10.1186/2193-1801-3-423

Cite this article as: Salgado et al.: Evaluation of five different suture materials in the skin of the earthworm (*Lumbricus terrestris*). *SpringerPlus* 2014 **3**:423.

Submit your manuscript to a SpringerOpen[®] journal and benefit from:

- Convenient online submission
- Rigorous peer review
- Immediate publication on acceptance
- Open access: articles freely available online
- High visibility within the field
- Retaining the copyright to your article

Submit your next manuscript at ► springeropen.com
