

Fig. S1. Nanoscale pull down using CIB2 variants and whirlin^{WT} constructs

COS-7 cells were co-transfected with mCherry-myo10-CIB2 variant constructs (Baits, red) and GFP-whirlin truncated constructs (Prey, green). Single channels are shown. mCherry-myo10 construct was used as a negative control. Scale bar = 10 μ m.

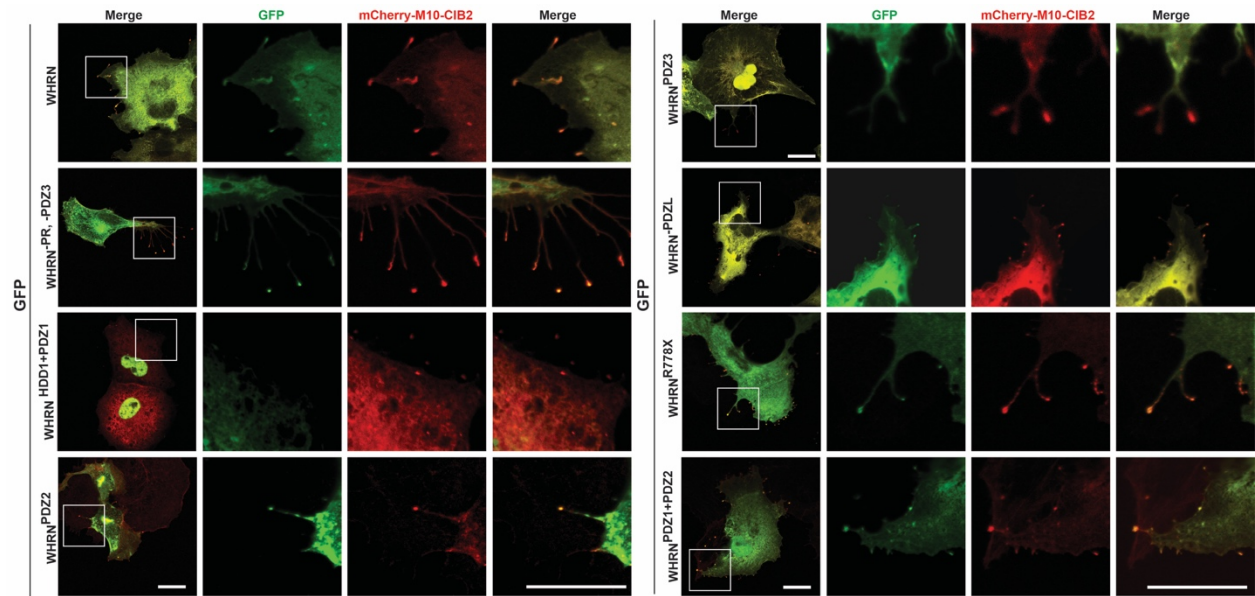


Fig. S2. Nanoscale pull down using CIB2 and truncated whirlin constructs

COS-7 cells were co-transfected with mCherry-myo10-CIB2^{WT} constructs (Baits, red) and GFP-whirlin truncated constructs (Prey, green). Single channels are shown. Scale bar = 10 μ m.

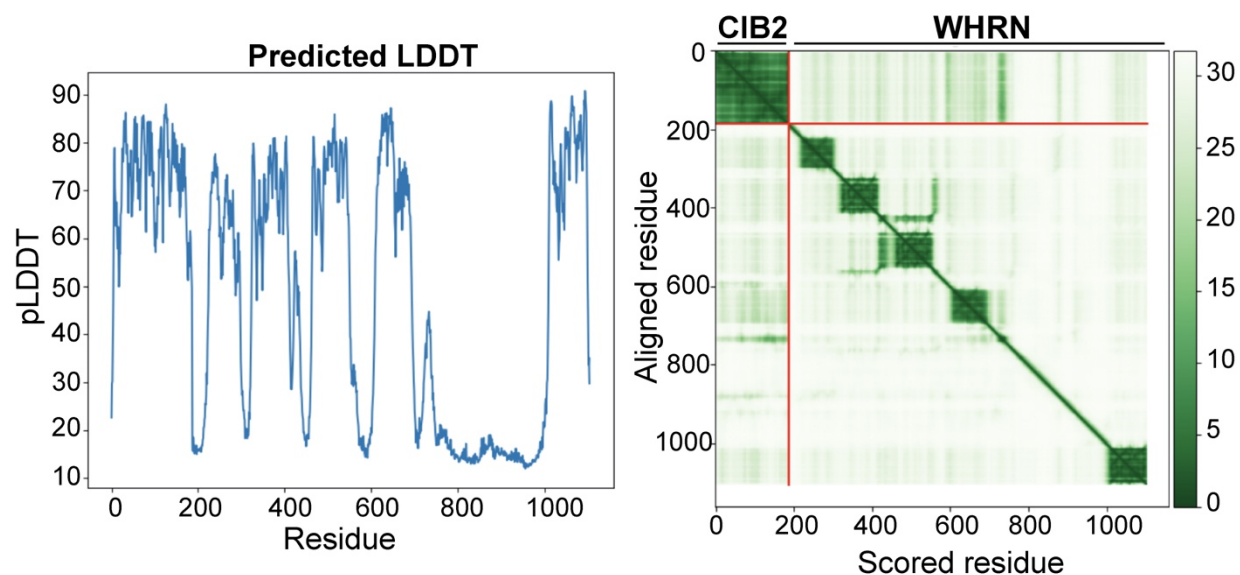


Fig. S3. AlphaFold multimer prediction quality measures for the CIB2-whirlin complex, including predicted Local Distance Difference Test (pLDDT) (left) and Predicted Aligned Error (PAE) (right).