

Neth Heart J (2020) 28:171  
<https://doi.org/10.1007/s12471-019-01338-4>



## A female with five chambers

K. K. Sahu · A. Doshi · A. K. Mishra · M. Kranis

Published online: 25 October 2019  
 © The Author(s) 2019

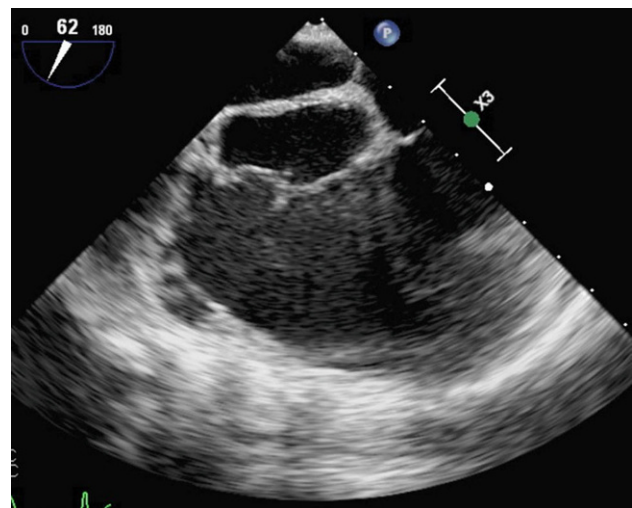
A 29-year-old female with a past medical history significant for intravenous drug abuse (IVDA), presented to the emergency room with complaints of fever, chills and shortness of breath. On initial assessment, patient was febrile (38.3°C/101 F) and tachycardic (110/min). Auscultation revealed a pansystolic murmur most prominent at the right fourth intercostal space. Transoesophageal echocardiography (TEE) was done considering her high-risk behaviour and cardiac findings (Fig. 1). What is the diagnosis?

### Answer

You will find the answer elsewhere in this issue.

**Conflict of interest** K.K. Sahu, A. Doshi, A.K. Mishra and M. Kranis declare that they have no competing interests.

**Open Access** This article is distributed under the terms of the Creative Commons Attribution 4.0 International License (<http://creativecommons.org/licenses/by/4.0/>), which permits unrestricted use, distribution, and reproduction in any medium, provided you give appropriate credit to the original author(s) and the source, provide a link to the Creative Commons license, and indicate if changes were made.



**Fig. 1** TEE (transoesophageal echocardiography) with a 4 chamber view

K. K. Sahu (✉) · A. K. Mishra  
 Department of Internal Medicine, Saint Vincent Hospital,  
 123 Summer Street, Worcester, MA 01608, United States  
[drkksahu85@gmail.com](mailto:drkksahu85@gmail.com)

A. Doshi · M. Kranis  
 Department of Cardiovascular diseases, Saint Vincent  
 Hospital, 123 Summer Street, Worcester, MA 01608, United  
 States

