



Cite this: *RSC Adv.*, 2018, 8, 39913

Protein-induced fluorescence enhancement for a simple and universal detection of protein/small molecule interactions†

Hansol Kim,^a Chang Yeol Lee,^a Jayeon Song,^a Junhyeok Yoon,^a Ki Soo Park ^{*b} and Hyun Gyu Park ^{*a}

We herein describe a novel and efficient method for the detection of protein/small molecule (SM) interactions, which relies on the protein-induced fluorescence enhancement (PIFE). In this method, a duplex probe is designed to position Cy3 and SM at the optimal distance to maximize the effect of PIFE, which is utilized as the key component. In the presence of target proteins that bind to SM, the Cy3 is guided close to the target proteins, which significantly enhances the fluorescence signal through a process of PIFE. With this approach, we successfully analyzed a model target protein, streptavidin (STV) that interacts with biotin (BTN) in less than 10 min without any washing steps. In addition, the practical applicability of this method was demonstrated by reliably determining STV in human serum. Finally, the universal applicability of this method was demonstrated by monitoring the interaction between folate and folate receptors.

Received 15th October 2018
Accepted 19th November 2018

DOI: 10.1039/c8ra08515c

rsc.li/rsc-advances

Introduction

Research on the interaction between proteins and small molecules (SMs) has played important roles in unveiling mechanisms of various biological processes including the cell cycle, cell development and cell signaling.^{1–3} In addition, it has made significant progress in the field of drug discovery, molecular diagnostics, and therapeutics. For example, the investigation of the interaction between folate (FA) and folate receptor (FR) has contributed to the early diagnosis of cancers and the effective monitoring of the drug response.^{4–6} Until now, to monitor the interaction between proteins and small molecules, several analytical methods, such as affinity chromatography,⁷ kinetic capillary electrophoresis,^{8,9} electrochemistry^{10,11} and fluorometry,^{12–16} have been utilized, most of which rely on the terminal protection mechanism in which SM-linked DNA that binds to the target protein is protected from exonuclease-catalyzed degradation.^{17–20}

Notably, fluorescent methods have gained considerable attention due to their intrinsic advantages including simplicity, robustness, and high sensitivity. The representative example in

this type of methods is based on Förster resonance energy transfer (FRET) that exhibits the nanoscale distance-dependent fluorescence properties.^{21–24} Although promising, these methods require target protein labeling, which could cause conformational changes of target protein. Moreover, the requirement of two different fluorophores and either exonuclease-catalyzed digestion or relevant processes to differentiate target protein-bound DNA probe from unbound one, increases the assay complexity, cost, and time (Table S1†). For these reasons, it is highly desirable to devise a simple but efficient detection method for protein/SM interactions.

Protein-induced fluorescence enhancement (PIFE) is a phenomenon in which several organic dyes, especially cyanine dyes, show the increased fluorescence when placed in close proximity to a protein.^{25,26} It is known that PIFE is more flexible than FRET in that PIFE employs only a single fluorophore and it exhibits the higher spatial resolution. Based on this phenomenon, the interaction of nucleic acids with proteins such as polymerase, helicases, and restriction enzymes has been monitored.^{27–29} For instance, Valuchova *et al.* applied PIFE in order to quantify the interaction of nucleic acids with restriction enzyme BamHI, and the DNA repair complexes Ku and XPF/ERCC1.²⁷ In recent years, DNA aptamer has been employed in conjunction with PIFE to devise the sensitive detection methods.³⁰

In this work, we adopted the unique features of PIFE for the detection of protein/SM interactions. As a key component, a duplex probe composed of Cy3 and SM-modified DNAs, respectively, is rationally designed to precisely control the distance between target protein and Cy3. In the presence of

^aDepartment of Chemical and Biomolecular Engineering (BK 21+ Program), KAIST, Daehak-ro 291, Yuseong-gu, Daejeon 305-701, Republic of Korea. E-mail: hgpark@kaist.ac.kr; Fax: +82-42-350-3910; Tel: +82-42-350-3932

^bDepartment of Biological Engineering, College of Engineering, Konkuk University, Seoul 05029, Republic of Korea. E-mail: kskonkuk@gmail.com; Fax: +82-2-450-3742; Tel: +82-2-450-3742

† Electronic supplementary information (ESI) available. See DOI: 10.1039/c8ra08515c



target proteins that bind to SM, Cy3 is placed close to target proteins, which leads to the significant fluorescence enhancement through a process of PIFE. With the developed strategy, we successfully detected two model interactions, streptavidin/biotin (STV/BTN) and FR/FA, verifying its general applicability. In addition, we confirmed that the proposed assay works fine even in human serum.

Experimental

Materials

All oligonucleotides used in this study were synthesized from Bioneer® (Daejeon, Korea) and purified by HPLC. The sequences of oligonucleotides are listed in Table S2.† Lysozyme, papain and human serum were purchased from Sigma-Aldrich (St Louis, MO, USA). STV and exonuclease I (Exo I) were purchased from Thermo Fisher Scientific (Waltham, MA, USA) and New England Biolabs Inc. (Beverly, MA, USA), respectively. All other chemicals were of analytical grade and used without further purification. Ultrapure DNase/RNase-free distilled water (DW) purchased from Bioneer® (Daejeon, Korea) was used throughout all the experiments.

Procedure for the detection of STV/BTN and FR/FA interaction

The duplex probe (CS_3/SS_{BTN} ; 5 μ M) composed of CS_3 (5 μ M) and SS_{BTN} (5 μ M) was first prepared in a 1 \times protein/SM interaction buffer (20 mM Tris-HCl, 50 mM KCl, pH 8.4). Next, 21 μ L of DW, 3 μ L of CS_3/SS_{BTN} (5 μ M), 3 μ L of 10 \times protein/SM interaction buffer, and 3 μ L of STV at varying concentrations or other proteins were mixed in a total volume of 30 μ L, which were then incubated for 10 min at room temperature (RT). The final concentration of duplex probe was 500 nM. Finally, the resulting fluorescence signals were measured at an excitation wavelength of 530 nm. For the detection of FR/FA interaction, the duplex probe (CS_3/SS_{FA} ; Table S2†) was used and subjected to the same procedure as described above.

Gel electrophoresis analysis for the STV/BTN interaction

The electrophoresis analysis on the reaction products was carried out with a 15% polyacrylamide gel in 1 \times TBE for 100 min at 120 V. After staining with GelRed (KOMA BIOTECH, Seoul, Korea), a gel image was acquired with Gel Doc™ EZ manager and Image Lab software (Bio-Rad, Hercules, USA).^{31,32}

Determination of STV in human serum

Varying concentrations of STV were spiked into undiluted human serum. Each sample was then analyzed by following the same procedure to detect the STV/BTN interaction as described above. The final concentration of human serum in the reaction mixture is 10%.

Instrumentation

Fluorescence intensities were measured using a Tecan Infinite M200 pro-microplate reader (Mnenedorf, Switzerland) and black,

384-well Greiner Bio-One microplates (ref: 781077, Courta-boeuf, France).

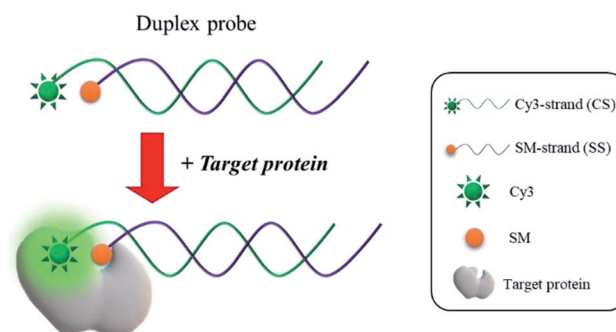
Results and discussion

Principle for the PIFE-based detection of protein/SM interactions

The fundamental principle of a new strategy for the detection of protein/SM interactions is illustrated in Scheme 1. The duplex probe composed of a 3'-Cy3-modified DNA (CS_3) and a 5'-SM-modified complement (SS_{SM}) is rationally designed to have the optimal distance between Cy3 and SM to maximize the effect of PIFE, which is utilized as a key component in the proposed detection system. In the presence of target protein that binds to SM, Cy3 in the duplex probe is guided close to proteins, which significantly enhances the fluorescence of Cy3 *via* a process of PIFE. Based on the fluorescence signal-on response, the protein/SM interaction can be detected in a single step without any washing steps.

Feasibility for the PIFE-based detection of protein/SM interactions

As a model target, STV/BTN interaction, which exhibits the exceptionally high binding affinity ($K_d = 10^{-15}$ M),²³ was selected and the detection feasibility of the proposed method was demonstrated by measuring fluorescence emission spectra. As shown in Fig. 1(a), CS_3 (i) incubated with either STV (ii) or SS_{BTN} (iii) produced the negligible fluorescence enhancement. On the other hand, the addition of STV to the duplex probe composed of CS_3 and SS_{BTN} significantly increased the fluorescence signal (iv) through a process of the PIFE. We also prepared the control duplex probe composed of CS_3 and a 5'-FA-modified DNA (SS_{FA}) instead of SS_{BTN} (Table S2†). As envisioned, PIFE was not observed in the presence of STV since the FA does not bind to STV (v and vi in Fig. 1(a) and (b)). Importantly, STV itself gave no fluorescence (vii) and did not have any interfering effect on the fluorescence of CS_3 (i, ii, v and vi), confirming that this system is not directly interrupted by STV itself. In addition, the fluorescence results were supported by the polyacrylamide gel electrophoresis, which demonstrated the formation of duplex probe and the complexation of BTN with



Scheme 1 Schematic illustration of the PIFE-based detection of protein/SM interactions.

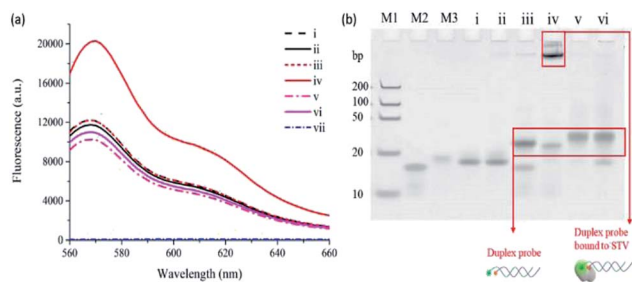


Fig. 1 Feasibility for the PIFE-based detection of STV/BTN interaction. (a) Fluorescence emission spectra and (b) polyacrylamide gel electrophoresis for the STV/BTN interaction under different conditions. (i) CS_3 , (ii) $CS_3 + STV$, (iii) CS_3/SS_{BTN} , (iv) $CS_3/SS_{BTN} + STV$, (v) CS_3/SS_{FA} , (vi) $CS_3/SS_{FA} + STV$. In (a), (vii): STV. In (b), M1, M2, and M3 indicate DNA ladder, SS_{BTN} , and SS_{FA} , respectively.

STV (Fig. 1(b)). Overall, these results confirm that the target protein binds to SM and thus induces the significant increase of fluorescence signal by PIFE, ensuring the detection feasibility of this strategy.

Optimization of reaction conditions

We optimized the reaction conditions required for the efficient analysis of STV/BTN interaction by examining the degree of fluorescence increase ($(F - F_0)/F_0$) under different conditions. First, the distance (d) between BTN and Cy3 in the duplex probe was varied by adjusting d values to find the optimal, spatial proximity for the effective PIFE. As shown in Fig. S1,† the most significant fluorescence increase was observed at $d = -3$, which matched well with the previous reports.³³ Next, the incubation time and temperature for STV/BTN interaction were also optimized. The results in Fig. S2,† show that the developed assay is not very sensitive to the incubation time and temperature, and thus 10 min and room temperature were selected for the further experiments.

Detection sensitivity and selectivity

Under the optimized conditions, the analytical sensitivity of the present system was determined by measuring the fluorescence

intensities at 570 nm (F_{570}), an emission maximum of Cy3, as a function of STV concentration. As shown in Fig. 2, the fluorescence intensities increased with increasing concentrations of STV and an excellent linear relationship ($R^2 = 0.9891$) was established in the range from 0 to 150 nM by the linear equation, $(F - F_0)/F_0 = 0.0007 \times C_{STV}/nM - 0.0045$, where $(F - F_0)/F_0$ is the degree of fluorescence increase and C_{STV} is the concentration of STV. Based on the definition of the limit of detection (LOD),³⁴ $3\sigma/S$, where σ and S are the standard deviation of blank sample and the slope of the linear relationship, respectively, LOD was calculated to be 2.93 nM, which is comparable or higher than those from previous fluorescent methods (Table S1,†). It should be noted that the developed methods do not require the target protein labeling, organic synthesis of probes, and the treatment of additional enzyme reactions (*e.g.*, exonuclease), which significantly decreases the assay time and simplifies the assay procedure. In addition, the proposed approach can be universally applied to the detection of other protein/SM interactions by simply changing the SM that matches the target proteins, which was demonstrated by the detection of FR/FA interactions (Fig. S3,†). The selectivity of this method was then evaluated by testing other proteins such as trypsin, thrombin, papain, lysozyme, and exonuclease I. The results in Fig. 3 show that STV only leads to the significant fluorescence enhancement while no noticeable fluorescence changes are observed in the presence of the other proteins. These results prove that this system is highly selective to STV, indicating that PIFE originates from the specific binding of STV with BTN that places Cy3 in close proximity to STV.

Practical applicability

Finally, the practical applicability of the developed system was verified by determining STV in human serum. As shown in Fig. S4,† an excellent linear relationship is made between $(F - F_0)/F_0$ and C_{STV} in human serum. Based on this calibration curve, we determined the concentrations of STV in human serum with high reproducibility and precision, as evidenced by the coefficients of variation (CV) (3.45–9.39%) and the recovery rates (95.17–103.35%) (Table 1). These results suggest that the

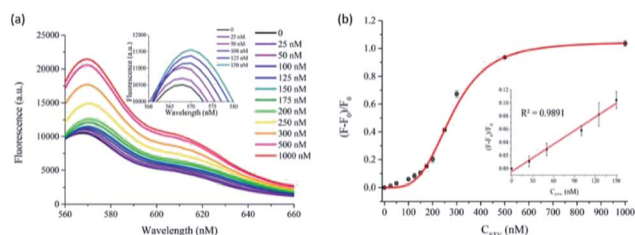


Fig. 2 Sensitivity for the PIFE-based detection of STV/BTN interaction. (a) Fluorescence emission spectra and (b) the degree of fluorescence increase $(F - F_0)/F_0$ in the presence of STV at varying concentrations, where F_0 and F represent the fluorescence intensities at 570 nm in the absence and presence of STV, respectively. Insets in (a) and (b) show the emission spectra and the linear relationship between $(F - F_0)/F_0$ and STV concentration (C_{STV}), respectively, in the range of 0 to 150 nM.

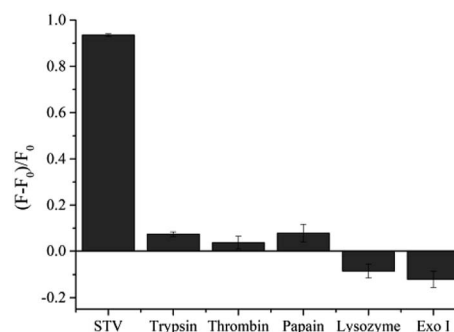


Fig. 3 Specificity for the PIFE-based detection of STV/BTN interaction. The degree of fluorescence increase $(F - F_0)/F_0$ in the presence of STV (500 nM) or other proteins (1 μ M), where F_0 and F represent the fluorescence intensities at 570 nm in the absence and presence of corresponding proteins, respectively.

Table 1 Determination of STV in human serum^a

Added STV (nM)	Measured STV ^b (nM)	SD ^c	CV ^d (%)	Recovery ^e (%)
50	47.58	2.74	5.76	95.17
150	155.03	5.35	3.45	103.36
250	248.54	23.35	9.39	99.42

^a To measure the concentration of STV in human serum, a calibration curve was first created by using standards containing a known concentration of STV spiked in human serum. Based on this calibration curve, the concentration of STV in human serum was determined by measuring the fluorescence at 570 nm from unknown samples. ^b Mean of three measurements. ^c Standard deviation of three measurements. ^d Coefficient of variation = $\frac{SD}{mean} \times 100$.

^e Recovery = $\frac{\text{measured value}}{\text{added value}} \times 100$.

proposed method would enable the reliable determination of STV in real biological samples containing a number of interfering agents.

Conclusions

In this work, we developed a simple and efficient strategy for the detection of protein/SM interactions based on the PIFE. The developed system employs a duplex probe rationally designed to maximize the effect of PIFE in response to the target protein. With this approach, we detected a model interaction, STV/BTN in less than 10 min. In addition, its general and practical applicability were verified by analyzing FR/FA interactions and reliably determining STV in human serum. Importantly, this method does not require the organic synthesis of probes, labeling of target proteins, and additional enzyme treatment, which overcomes the drawbacks such as complexity, high-cost, and long analysis time in the previous ones. To the best of our knowledge, this is the first attempt to adopt the novel phenomenon of PIFE for the analysis of protein/SM interactions, which would pave the way for the simple and efficient detection of various biological entities such as small molecules, proteins, and cells.

Conflicts of interest

There are no conflicts to declare.

Acknowledgements

This work was supported by the Bio-Synergy Research Project (NRF-2015M3A9C4070484) and Advanced Biomass R&D Center (ABC) of Global Frontier Project (ABC-2010-0029728) of the Ministry of Science, ICT and Future Planning through the National Research Foundation.

Notes and references

- L. R. Coney, A. Tomassetti, L. Carayannopoulos, V. Frasca, B. a. Kamen, M. I. Colnaghi and V. R. Zurawski, *Cancer Res.*, 1991, **51**, 6125–6132.
- N. Ohoka, K. Nagai, T. Hattori, K. Okuhira, N. Shibata, N. Cho and M. Naito, *Cell Death Dis.*, 2014, **5**, e1513–10.
- D. Leung, C. Hardouin, D. L. Boger and B. F. Cravatt, *Nat. Biotechnol.*, 2003, **21**, 687–691.
- G. Toffoli, C. Cernigoi, A. Russo, A. Gallo, M. Bagnoli and M. Boiocchi, *Int. J. Cancer*, 1997, **74**, 193–198.
- P. Y. Li, S. Del Vecchio and V. Maria, *J. Nucl. Med.*, 1996, **37**, 665–672.
- P. Garin-Chesa, I. Campbell, P. E. Saigo, J. L. Lewis, L. J. Old and W. J. Rettig, *Am. J. Pathol.*, 1993, **142**, 557–567.
- J. Taumton, C. A. Hassig and S. L. Schreiber, *Science*, 1996, **272**, 408–411.
- A. Petrov, V. Okhonin, M. Berezovski and S. N. Krylov, *J. Am. Chem. Soc.*, 2005, **127**, 17104–17110.
- A. P. Drabovich, M. V. Berezovski, M. U. Musheev and S. N. Krylov, *Anal. Chem.*, 2009, **81**, 490–494.
- Z. Wu, Z. Zhen, J. H. Jiang, G. L. Shen and R. Q. Yu, *J. Am. Chem. Soc.*, 2009, **131**, 12325–12332.
- G. Wang, X. He, L. Wang and X. Zhang, *Biosens. Bioelectron.*, 2013, **42**, 337–341.
- H. B. Wang, H. D. Zhang, Y. Chen and Y. M. Liu, *Biosens. Bioelectron.*, 2015, **74**, 581–586.
- H. Shi, X. Mao, X. Chen, Z. Wang, K. Wang and X. Zhu, *Biosens. Bioelectron.*, 2017, **91**, 136–142.
- X. Zhou, Z. Cui, L. Liu, Z. Sun, M. Lin, Q. Hu, H. Wang and X. Xiao, *Analyst*, 2018, **143**, 2755–2759.
- C. Y. Lee, H. Y. Kim, S. Kim, K. S. Park and H. G. Park, *Analyst*, 2018, **143**, 2023–2028.
- Z. Zhang, C. Hejesen, M. B. Kjelstrup, V. Birkedal and K. V. Gothelf, *J. Am. Chem. Soc.*, 2014, **136**, 11115–11120.
- X. Li, X. Ding, Y. Li, L. Wang and J. Fan, *Nanoscale*, 2016, **8**, 9852–9860.
- G. Zhou, X. Zhang, X. Ji and Z. He, *Chem. Commun.*, 2013, **49**, 8854.
- Y. He and B. Jiao, *Microchim. Acta*, 2016, 3183–3189.
- J. Chen, C. Gao, A. K. Mallik and H. Qiu, *J. Mater. Chem. B*, 2016, **4**, 5161–5166.
- Q. Li and S. Seeger, *J. Phys. Chem. B*, 2011, **115**, 13643–13649.
- N. Lecat-Guillet, C. Monnier, X. Rovira, J. Kniazeff, L. Lamarque, J. M. Zwier, E. Trinquet, J. P. Pin and P. Rondard, *Cell Chem. Biol.*, 2017, **24**, 360–370.
- D. Tu, L. Liu, Q. Ju, Y. Liu, H. Zhu, R. Li and X. Chen, *Angew. Chem., Int. Ed.*, 2011, **50**, 6306–6310.
- S. Zhang, J. Wang, W. Xu, B. Chen, W. Yu, L. Xu and H. Song, *J. Lumin.*, 2014, **147**, 278–283.
- E. M. S. Stennett, M. A. Ciuba, S. Lin and M. Levitus, *J. Phys. Chem. Lett.*, 2015, **6**, 1819–1823.
- G. Luo, M. Wang, W. H. Konigsberg and X. S. Xie, *Proc. Natl. Acad. Sci.*, 2007, **104**, 12610–12615.
- S. Valuchova, J. Fulnecek, A. P. Petrov, K. Tripsianes and K. Riha, *Sci. Rep.*, 2016, **6**, 1–10.

- 28 E. Ploetz, E. Lerner, F. Husada, M. Roelfs, S. Chung, J. Hohlbein, S. Weiss and T. Cordes, *Sci. Rep.*, 2016, **6**, 1–24.
- 29 H. Hwang, H. Kim and S. Myong, *Proc. Natl. Acad. Sci. U. S. A.*, 2011, **108**, 7414–7418.
- 30 S. Umrao, V. Jain, Anusha, B. Chakraborty and R. Roy, *Sens. Actuators, B*, 2018, **267**, 294–301.
- 31 C. Y. Lee, K. S. Park and H. G. Park, *Chem. Commun.*, 2015, **51**, 13744–13747.
- 32 K. S. Park, C. Y. Lee, K. S. Kang and H. G. Park, *Biosens. Bioelectron.*, 2017, **88**, 48–54.
- 33 G. Li, Y. Liu, Y. Liu, L. Chen, S. Wu, Y. Liu and X. Li, *Angew. Chem., Int. Ed.*, 2013, **52**, 9544–9549.
- 34 K. S. Park, M. Il Kim, M. A. Woo and H. G. Park, *Biosens. Bioelectron.*, 2013, **45**, 65–69.