

RESEARCH ARTICLE

# Effect of APOE $\epsilon$ 4 allele on survival and fertility in an adverse environment

Eric van Exel<sup>1,2\*</sup>, Jacob J. E. Koopman<sup>3</sup>, David van Bodegom<sup>3,4</sup>, Johannes J. Meij<sup>5</sup>, Peter de Knijff<sup>6</sup>, Juventus B. Ziem<sup>7</sup>, Caleb E. Finch<sup>8</sup>, Rudi G. J. Westendorp<sup>3,4,9</sup>

**1** Department of Psychiatry, VU University Medical Center/GGZinGeest, Amsterdam, the Netherlands, **2** EMGO Institute for Health and Care Research and Neuroscience Campus Amsterdam, the Netherlands, **3** Department of Gerontology and Geriatrics, Leiden University Medical Center, Leiden, the Netherlands, **4** Leyden Academy on Vitality and Ageing, Leiden, the Netherlands, **5** University of Melbourne, Melbourne Academic Center of Health, Melbourne, Australia, **6** Department of Human Genetics, Leiden University Medical Center, Leiden, the Netherlands, **7** Department of Clinical Laboratory Sciences, School of Medicine and Health Sciences, University for Development Studies, Tamale, Ghana, **8** Davis School of Gerontology and Dornsife College, Dept Biological Sciences, University of Southern California, Los Angeles, United States of America, **9** Department of Public Health, and Center for Healthy Ageing, University of Copenhagen, Copenhagen, Denmark

\* [e.vanexel@ggzingeest.nl](mailto:e.vanexel@ggzingeest.nl).



**OPEN ACCESS**

**Citation:** van Exel E, Koopman JJE, Bodegom Dv, Meij JJ, Knijff Pd, Ziem JB, et al. (2017) Effect of APOE  $\epsilon$ 4 allele on survival and fertility in an adverse environment. PLoS ONE 12(7): e0179497. <https://doi.org/10.1371/journal.pone.0179497>

**Editor:** Ornit Chiba-Falek, Duke University, UNITED STATES

**Received:** May 31, 2016

**Accepted:** May 31, 2017

**Published:** July 6, 2017

**Copyright:** © 2017 van Exel et al. This is an open access article distributed under the terms of the [Creative Commons Attribution License](https://creativecommons.org/licenses/by/4.0/), which permits unrestricted use, distribution, and reproduction in any medium, provided the original author and source are credited.

**Data Availability Statement:** Public data deposition is currently not permitted by the Leiden University Medical Center while legal and ethical aspects are being investigated and policy developed. Data may be requested at the Leyden Academy, Rijnsburgerweg 10, 2333 AA Leiden, the Netherlands Email [leydenacademy@leydenacademy.nl](mailto:leydenacademy@leydenacademy.nl)

**Funding:** This research was supported by the Netherlands Foundation for the Advancements of Tropical Research (WOTRO 93-467), the Netherlands Organization for Scientific Research

## Abstract

### Background

The apolipoprotein- $\epsilon$ 4 allele (*APOE- $\epsilon$ 4*) is strongly associated with detrimental outcomes in affluent populations including atherosclerotic disease, Alzheimer's disease, and reduced lifespan. Despite these detrimental outcomes, population frequencies of *APOE- $\epsilon$ 4* are high. We hypothesize that the high frequency of *APOE- $\epsilon$ 4* was maintained because of beneficial effects during evolution when infectious pathogens were more prevalent and a major cause of mortality. We examined a rural Ghanaian population with a high pathogen exposure for selective advantages of *APOE- $\epsilon$ 4*, to survival and or fertility.

### Methods and findings

This rural Ghanaian population ( $n = 4311$ ) has high levels of mortality from widespread infectious diseases which are the main cause of death. We examined whether *APOE- $\epsilon$ 4* was associated with survival (total follow-up time was 30,262 years) and fertility after stratifying by exposure to high or low pathogen levels. Households drawing water from open wells and rivers were classified as exposed to high pathogen levels while low pathogen exposure was classified as those drawing water from borehole wells. We found a non-significant, but positive survival benefit, i.e. the hazard ratio per *APOE- $\epsilon$ 4* allele was 0.80 (95% confidence interval: 0.69 to 1.05), adjusted for sex, tribe, and socioeconomic status. Among women aged 40 years and older ( $n = 842$ ), *APOE- $\epsilon$ 4* was not associated with the lifetime number of children. However, *APOE- $\epsilon$ 4* was associated with higher fertility in women exposed to high pathogen levels. Compared with women not carrying an *APOE- $\epsilon$ 4* allele, those carrying one *APOE- $\epsilon$ 4* allele had on average one more child and those carrying two *APOE- $\epsilon$ 4* alleles had 3.5 more children ( $p = 0.018$ ).

(NWO 051-14-050), the European Union-funded Network of Excellence LifeSpan (FP6 036894), a grant of the Board of Leiden University Medical Center, Stichting Dioraphte and a grant of the EMGO Institute, VU University Medical Center.

**Competing interests:** The authors have declared that no competing interests exist.

## Conclusions

Contrary to affluent modern-day populations, *APOE- $\epsilon$ 4* did not carry a survival disadvantage in this rural Ghanaian population. Moreover, *APOE- $\epsilon$ 4* promotes fertility in highly infectious environments. Our findings suggest that *APOE- $\epsilon$ 4* may be considered as evolutionarily adaptive. Its adverse associations in affluent modern populations with later onset diseases of aging further characterize *APOE- $\epsilon$ 4* as an example of antagonistic pleiotropy.

## Introduction

The apolipoprotein  $\epsilon$ 4 allele (*APOE  $\epsilon$ 4* allele) it is strongly associated with detrimental outcomes to adult health including high cholesterol [1], atherosclerotic disease [2,3,4], reduced lifespan [5,6] and Alzheimer's disease (AD) [3,7,8]. Nonetheless, *APOE  $\epsilon$ 4* is found globally observed at population frequencies from 5 to 45%, with higher prevalence in African populations [9,10].

We and others have hypothesized that *APOE  $\epsilon$ 4* may have beneficial or detrimental effects depending on environmental factors. Earlier in human evolution [11,12], genes such as *APOE  $\epsilon$ 4* could have conferred a selective advantage when survival was dominated by infections, by either increasing survival, or by increasing fertility. Such adaptive value has diminished with declining infections during the past century resulting in delayed disadvantageous consequences at later ages which were on weaker selection. A prior example of beneficial or detrimental effects on survival is the sporadic Afrikaner-2 mutation in the LDL receptor gene: before 1900, the Afrikaner-2 mutation was associated with increased survival despite considerably elevated cholesterol, whereas, after 1900 as infections declined, carriers had decreased survival [13]. Thus, there can be an adaptive relationship between a genetic predisposition to elevated cholesterol levels, infectious disease, and survival. A classic example of effects of fertility dependent on environmental conditions is an isolated island opossum population which have little predation showing slower reproduction compared to a highly predated mainland population showing high reproduction [14]. Similar studies in codfish and guppies show that an environmental fluctuations causing high mortality, e.g. by overfishing [15], selects for maximization of the number of offspring [15–16].

We examined survival and fertility, and their relationship with *APOE  $\epsilon$ 4* in a large population in rural Ghana, which is characterized by high mortality from infectious diseases [17–19].

## Materials and methods

### Ethics statement

Informed consent was obtained orally because the majority of the study participants did not read or write. A consent form was read out to the participants in their local language, explaining the purpose and procedure of the study. For the verbal autopsies, the consent form from the verbal autopsy protocol of the World Health Organization (WHO) was read out. Consent was registered in the form of a thumb print. Informed consent from children was obtained from their legal guardian, using the same procedure. The entire procedure, including the text of the consent form, was approved by the Ethical Review Committee of the Ghana Health Service, the Medical Ethical Committee of the Leiden University Medical Center in Leiden, the Netherlands, and by the local chiefs and elders in the research area.

## Study population

This study was conducted in the Garu-Tempane District in the Upper East Region of Ghana. This region is remote, rural, and among the least developed in the country. The vast majority of the inhabitants are involved in non-commercial agriculture performed by manual labor without mechanized farming or transportation. Hospital care is absent. Infectious diseases such as malaria, typhoid fever, tuberculosis, meningitis and intestinal helminths are highly endemic, whereas HIV infections range between 2 and 3% [17–24].

From 2003 through 2011, we maintained a demographic registry within a research area of 375 km<sup>2</sup> comprising 32 villages. During yearly visits, we registered the name, age, sex, tribe, and location of each inhabitant. Annual migration into the research area was 2%, mostly from within the Upper East Region and surrounding areas in Togo, and 1% out of the research area. In 2007, we determined an index of socioeconomic status based on the property value of each household according to the Demographic and Health Survey method [21].

We classified inhabitants as exposed to high or low pathogen levels based on the main water source for their households. Those drawing water from open wells and rivers were classified as exposed to high pathogen levels, while those drawing water from borehole wells were classified as exposed to low pathogen levels [17]. Intestinal helminthic infections, assessed by PCR in stool samples of 611 apparently healthy individuals [20], were 1.3 times more prevalent in those drawing water from open wells and rivers (39% vs. 29%,  $p = 0.022$ ). Mortality among the inhabitants of the research area was 17% higher ( $p = 0.003$ ) in those drawing water from open wells and rivers vs. those drawing water from boreholes, adjusted for age, sex, tribe and socioeconomic status. Based on data from verbal autopsy [17], mortality due to infectious diseases was 20% higher in those drawing water from open wells and rivers ( $p = 0.02$ ), while mortality due to non-infectious diseases was similar in both groups ( $p = 0.20$ ), adjusted for age, sex, tribe and socioeconomic status.

Individuals were selected for genotyping to study longevity and fertility. Therefore, we randomly oversampled newborns, middle-aged women, and elderly from the age of 60 years onward. We preferably selected individuals included in prior phenotypic studies, which represented random selections from the population [21–25].

## Genotyping

After collection, mouth swabs were collected and stored in 2.5ml STE buffer (100mM NaCl, 10 mM Tris, 10 mM EDTA) with proteinase K (0.05 mg/ml), pronase (0.1 mg/ml) and sodium dodecylsulphate (0.5%). DNA was isolated from the buccal swabs by the commercial kit Base-Clear (the Netherlands) (swabs collected 2002–2006) and KBioscience (UK) (swabs collected 2007–2010). APOE genotyping used standard TaqMan assays (Applied Biosystems, Foster City, CA, USA) and was done in the Department of Human Genetics, Leiden University Medical Center. 4975 subjects were genotyped; in 1.3% ( $n = 129$ ) data on APOE genotype were incomplete. After genotyping, we rigidly excluded 535 (10.9%) individuals from the analyses. We excluded 341 individuals with a different allele at less than 10% of the loci indicated by an IBS1 (Identity by State) below 10%, which included unintentional duplicates. We excluded 199 individuals with a mismatch between the genotyped and registered sex, Five individuals were excluded because of both reasons. We have described the difficulties of field work in Ghana in a recent study [26], further explaining our exclusions.

## Lipids and inflammatory markers

Venous plasma was sampled from apparently healthy inhabitants of the research area, by random selection across 10-year age groups, except for an oversampling of women for studies on

fertility [19, 24]. In these samples, levels of triglycerides and total cholesterol were measured by colorimetry (Roche Modular P800) and levels of apolipoprotein-B100 (apoB) and apolipoprotein-A1 (apoA1) by high-sensitivity immunoturbidimetry (Roche Cobas Integra). ApoA is associated with HDL cholesterol while apoB is associated with LDL cholesterol and predicts atherosclerotic disease [27]. C-reactive protein was assayed by high-sensitivity immunoturbidimetry (Roche Cobas Integra); interleukin-6 by a sandwich chemiluminescent immunoassay (Randox Evidence Investigator Biochip).

## Survival and fertility

Survival of all inhabitants was registered during the yearly follow-up from 2003 through 2011. Mortality rates were calculated as the number of deaths per 1000 person-years. Fertility was measured in two manners. Reported fertility was retrospectively determined in 2003 by interviewing women aged 40 years and older who were available and willing to participate [24,25]. Reported fertility was expressed as the total number of live births. We made significant efforts to minimize recall bias, to obtain the best estimate of the total number of offspring, by discussing the number of offspring, among all adults present in the household including multiple wives. Use of contraception in this reported cohort is likely to be very low, as reported by the University of Ghana in 1988 as 0.7% for this region [28]. We, therefore, assume that when the women in this cohort were on average 23 years, in 1973, the use of contraception in this region was likely to be lower than 0.7%.

Observed fertility was registered prospectively for women of all ages during the annual follow-up from 2003 through 2011 and was expressed as the number of children that a woman had given birth to per year of follow-up [25]. It is likely that use of contraception in this cohort ranges between 15–42% [29].

## Analyses

First, the Hardy-Weinberg equilibrium of the different APOE alleles was tested by chi-square. Next, the number of APOE  $\epsilon$ 4 were used as the determinants of the levels of lipids and inflammatory markers, mortality, and fertility. Because of skewed distributions, levels of triglycerides, C-reactive protein and interleukin-6 were analyzed after logarithmic transformation and presented as geometric means. Associations of APOE  $\epsilon$ 4 and APOE  $\epsilon$ 2 with levels of lipids and inflammatory markers were assessed with an additive linear regression model, adjusted for age and socioeconomic status as continuous covariates and for sex and tribe as categorical covariates.

Mortality associations with APOE alleles were assessed as Kaplan-Meier survival curves. Mortality rates were assessed by Poisson regression, adjusted for socioeconomic status as a continuous covariate and sex and tribe as categorical covariates. Additionally, hazard ratios were calculated with Cox regression using the longitudinal individual survival data with age as the time variable and with left truncation to account for differences in age during follow-up.

Fertility associations of APOE alleles were assessed using the number of children given birth to during life and the differences in these numbers with Poisson regression, adjusted for socioeconomic status as a continuous covariate and tribe as categorical covariates. Age was included as a categorical covariate divided into 5-year age groups to account for a non-linear age pattern of fertility.

For individuals with different numbers of APOE  $\epsilon$ 4 or APOE  $\epsilon$ 2, we estimated birth rates, expressed as the number of children given birth to per year, and the differences in these rates with Poisson regression, adjusted for socioeconomic status as a continuous covariate and sex and tribe as categorical covariates. Age was again included as a categorical covariate.

All analyses were repeated after stratification of individuals exposed to high and low pathogen levels. To account for shared environmental conditions, all analyses were also clustered per household, but this did not materially change the results. The analyses used IBM SPSS version 23 and Stata/SE version 14.

### Role of the funding source

The sponsors of the study had no role in study design, data collection, primary data analysis, data interpretation, or writing of the report. The corresponding author had full access to all the data in the study and had final responsibility for the final content of the report and the decision to submit for publication.

### Results

Table 1 describes the Ghanaian study population in terms of mortality (n = 4311). Reported fertility is expressed as the number of children that women, 40 years and over had given birth to during life (n = 842). Observed fertility expressed as the number of children that a woman had given birth to per year of follow-up [17] in women aged 15 to 40 years (n = 1243) and lipids and inflammatory markers (n = 413). The frequencies of APOE ε4 was 14.9%. The different APOE alleles were not in Hardy-Weinberg equilibrium in the genotyped population (n = 4311), S1 Table.

**Table 1. Characteristics of the Ghanaian study population.**

	Lipids and inflammatory markers	Mortality	Reported fertility	Observed fertility
<i>n</i>	413	4311	842	1243
Age, years	44 (34–65)	27 (0–51)	53 (44–64)	28 (24–34)
Female sex, <i>n</i> (%)	303 (73.4)	2810 (65.2)	842 (100.0)	1243 (100.0)
Tribe, <i>n</i> (%)				
• Bimoba	312 (75.5)	2940 (68.2)	543 (64.5)	903 (72.6)
• Kusasi	93 (22.5)	1090 (25.3)	237 (28.1)	266 (21.4)
• Other	8 (1.9)	281 (6.5)	62 (7.4)	74 (6.0)
Household property, US\$	1196 (688–2084)	1125 (588–1942)	1102 (515–1963)	1140 (612–2027)
Safe drinking water, <i>n</i> (%)*	308 (74.6)	3492 (81.0)	674 (80.0)	1007 (81.0)
APOE genotype, <i>n</i> (%)				
• ε2/ε2	12 (2.9)	111 (2.6)	20 (2.4)	35 (2.8)
• ε3/ε3	200 (48.4)	2084 (48.3)	424 (50.4)	557 (44.8)
• ε2/ε3	83 (20.1)	851 (19.7)	164 (19.5)	282 (22.7)
• ε2/ε4	26 (6.3)	214 (5.0)	43 (5.1)	63 (5.1)
• ε3/ε4	82 (19.9)	920 (21.3)	172 (20.4)	271 (21.8)
• ε4/ε4	10 (2.4)	131 (3.0)	19 (2.3)	35 (2.8)
Observed years	NA	30262	NA	10072
Deaths	NA	366	NA	NA
Number of children	NA	NA	7 (6–9)	1 (0–2)

Reported fertility was expressed as the number of children that a woman had given birth to during her life. Reported fertility was retrospectively determined in 2003 by interviewing women aged 40 years and older [19,20] Observed fertility was registered prospectively for women of all ages during the annual follow-up from 2003 through 2011 and was expressed as the number of children that a woman had given birth to per year of follow-up [12]. NA: not applicable. \* Safe drinking water, is defined as water obtained from a borehole well vs unsafe drinking water obtained from an open well, i.e. river.

<https://doi.org/10.1371/journal.pone.0179497.t001>

As in affluent populations, *APOE*  $\epsilon 4$  was strongly and positively associated with plasma levels of triglycerides, total cholesterol and apolipoprotein-B100 (apoB), which are closely linked to LDL cholesterol and atherosclerotic disease [27] (Table 2 and Fig 1A). Table 2 shows an allele dose for *APOE*  $\epsilon 4$  and plasma levels of triglycerides, total cholesterol and apoB. However, *APOE*  $\epsilon 4$  (Table 2) was not associated with the inflammatory markers C-reactive protein or interleukin-6.

Contrary to affluent populations, *APOE*  $\epsilon 4$  was not associated with a survival disadvantage.

The total follow-up time in 4311 genotyped subjects was 30.262 years with a mean follow-up of 7 years and observed a non-significant but positive survival trend in those who were carrying one or two *APOE*  $\epsilon 4$  alleles (Table 2,  $p = 0.165$ ). There was no dose-response association between increasing number of *APOE*  $\epsilon 4$  and survival (Fig 1B). The hazard ratio per *APOE*  $\epsilon 4$  allele was 0.80 (95% confidence interval: 0.69 to 1.05),  $p = 0.130$ , adjusted for sex, tribe, and socioeconomic status. The *APOE*  $\epsilon 2$  allele was not associated with survival (S2 Table).

Some Ghanaian villagers used water drawn from relatively unsafe sources with high levels of pathogens, such as rivers and open wells, while others drew water from relatively cleaner borehole wells with low levels of pathogens. These water sources have been located in the area independent of the household characteristics [17], i.e. social economical status or tribe. We repeated our analyses after stratification for this difference in pathogen exposure. There was still no association between *APOE*  $\epsilon 4$  and survival after stratification by water source as a proxy for pathogen exposure (Table 2).

Next, we analyzed the association of *APOE*  $\epsilon 4$  with fertility as reported by women aged 40 years and older. Among all women, *APOE*  $\epsilon 4$  was not associated with the lifetime number of offspring (Table 2). However, when stratified by high and low pathogen exposure, fertility was higher in association with *APOE*  $\epsilon 4$  allele dose. Moreover, the number of offspring increased with an increasing number of *APOE*  $\epsilon 4$  in women exposed to high pathogen levels, in adjusted analysis for maternal age, tribe and socioeconomic status (Table 2 and Fig 1C) and in unadjusted analysis (Panel C in S1 Fig).

Relative to the non-carriers, those carrying one *APOE*  $\epsilon 4$  had on average one more child and those carrying two *APOE*  $\epsilon 4$  had 3.5 more children (Table 2, Fig 1C). In contrast, with low pathogen exposure, *APOE*  $\epsilon 4$  was not associated with the number of offspring (Table 2, Fig 1C). We analyzed the distribution of the number of *APOE*- $\epsilon 4$  alleles in relation to the pathogen exposure, to determine whether our finding on fertility was possibly due to a skewed distribution of *APOE*  $\epsilon 4$ . However, the *APOE*- $\epsilon 4$  allele frequency is similarly distributed in both groups. The *APOE*- $\epsilon 4$  allele frequency is 12.5% in the high pathogen exposure group vs. 15.7% in the lower exposure group (S3 Table). The *APOE*  $\epsilon 2$  allele did not show an association with reported fertility (S2 Table).

We examined the association of *APOE* with fertility as observed during follow-up in women aged 15 through 40 years. Neither the *APOE*  $\epsilon 4$  allele (Table 2) nor the *APOE*  $\epsilon 2$  allele (S2 Table) were associated with birth rates.

Finally, we explored the association of the genotypes of *APOE*  $\epsilon 3/\epsilon 4$  (frequency in the studied population 21.3%),  $\epsilon 2/\epsilon 4$  (frequency of 5.0%),  $\epsilon 2/\epsilon 3$  (19.7%) and those without an *APOE*- $\epsilon 4$  allele to those carrying an *APOE*- $\epsilon 4$  allele, i.e. *APOE*- $\epsilon 4$ , heterozygotes and homozygotes combined with either survival (S4 Table and S5 Table) or fertility (S6 Table). The findings agree with our other findings that showed the *APOE*- $\epsilon 4$  allele did not confer a survival disadvantage in this rural Ghanaian population. Moreover, all analyses revealed a trend with improved survival in *APOE*- $\epsilon 3/\epsilon 4$ ,  $\epsilon 2/\epsilon 4$  and those without an *APOE*- $\epsilon 4$  allele compared to those carrying an *APOE*- $\epsilon 4$  allele, i.e. *APOE*- $\epsilon 4$ , heterozygotes and homozygotes combined carriers. Our additional analysis also confirmed our finding on fertility in those exposed to high pathogen levels, as shown in Table 2 that those without an *APOE*- $\epsilon 4$  allele compared to

**Table 2. Levels of lipids and inflammatory markers, survival, and fertility by number of APOE ε4 alleles.**

	Number of APOE ε4			p value
	0	1	2	
<b>Lipids and inflammatory markers</b>	<i>n</i> = 295	<i>n</i> = 108	<i>n</i> = 10	
Triglycerides, mmol/l	0.90 (0.82 to 0.99)	0.97 (0.87 to 1.09)	1.23 (0.95 to 1.58)	0.008
Total cholesterol, mmol/l	3.00 (2.81 to 3.16)	3.20 (2.99 to 3.41)	3.35 (2.89 to 3.81)	0.002
Apolipoprotein-A1, g/l	1.01 (0.96 to 1.07)	1.00 (0.93 to 1.07)	0.89 (0.74 to 1.04)	0.225
Apolipoprotein-B100, g/l	0.52 (0.48 to 0.56)	0.59 (0.54 to 0.64)	0.60 (0.49 to 0.71)	< 0.001
C-reactive protein, mg/l	1.03 (0.75 to 1.42)	0.93 (0.63 to 1.36)	0.68 (0.29 to 1.59)	0.262
Interleukin-6, ng/l	1.91 (1.67 to 2.19)	1.99 (1.69 to 2.33)	2.10 (1.47 to 3.00)	0.423
<b>Survival</b>				
Mortality rate, deaths per 1000 person-years	<i>n</i> = 3046	<i>n</i> = 1134	<i>n</i> = 131	
• Overall	11.74 (10.34 to 13.15)	9.79 (7.74 to 11.84)	10.37 (3.17 to 17.56)	0.165
• Low pathogen exposure	11.23 (9.69 to 12.76)	9.67 (7.45 to 11.90)	10.17 (2.62 to 17.71)	0.311
• High pathogen exposure	13.96 (10.51 to 17.40)	10.15 (5.01 to 15.29)	10.97 (0.00 to 32.58)	0.285
<b>Reported fertility</b>				
Number of children, <i>n</i>	<i>n</i> = 608	<i>n</i> = 215	<i>n</i> = 19	
• Overall	7.52 (7.30 to 7.74)	7.60 (7.23 to 7.97)	6.85 (5.66 to 8.04)	0.819
• Low pathogen exposure	7.52 (7.27 to 7.76)	7.42 (7.02 to 7.82)	6.28 (5.07 to 7.48)	0.202
• High pathogen exposure	7.53 (7.05 to 8.01)	8.55 (7.56 to 9.53)	11.00 (6.34 to 15.65)	0.018
<b>Observed fertility</b>				
Birth rate, children per person-year	<i>n</i> = 874	<i>n</i> = 334	<i>n</i> = 35	
• Overall	0.96 (0.90 to 1.03)	0.92 (0.82 to 1.02)	0.99 (0.65 to 1.33)	0.641
• Low pathogen exposure	0.97 (0.90 to 1.05)	0.89 (0.78 to 1.00)	0.99 (0.61 to 1.38)	0.371
• High pathogen exposure	0.92 (0.77 to 1.06)	1.04 (0.78 to 1.30)	0.98 (0.25 to 1.72)	0.460

Lipids and inflammatory markers are given as means or geometric means with 95% confidence intervals. Apolipoprotein-A1 is associated with HDL cholesterol, while apolipoprotein-B100 is associated with LDL cholesterol. Low pathogen exposure is defined as water from borehole wells, high pathogen exposure is water from relatively unsafe sources with high levels of pathogens, such as rivers and open wells. Measures of survival and fertility are given with 95% confidence intervals. Lipids, inflammatory markers and mortality measures were adjusted for age, sex, tribe and socioeconomic status. Fertility measures were adjusted for age, tribe and socioeconomic status.

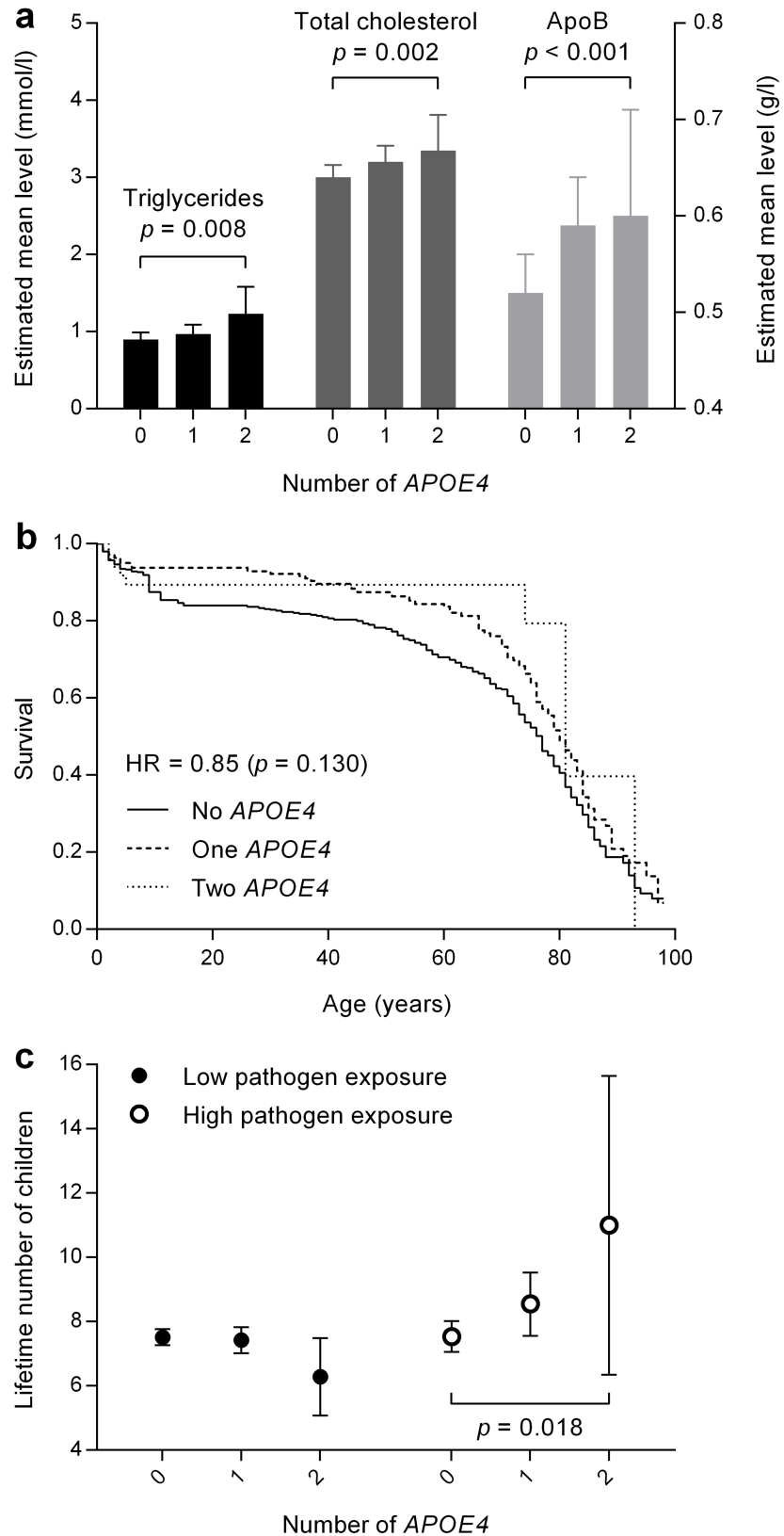
<https://doi.org/10.1371/journal.pone.0179497.t002>

those carrying an APOE -ε4 allele, i.e. one or two APOE ε4, compared with those not carrying APOE- ε4, had on average one more child, *p* = 0.033 (S7 Table). A similar trend was revealed with improved reported fertility in APOE -ε3/ε4 and ε2/ε4 carriers using unsafe drinking water sources.

Moreover, we studied the number of offspring in APOE-ε4 homozygotes compared to APOE ε4 heterozygotes, in environments with high pathogen levels (S8 Table), suggesting that APOE ε4 homozygotes compared to APOE-ε4 heterozygotes, had more offspring.

## Discussion

The effect of the APOE genotype on survival and fertility was studied in a large population in rural Ghana in which mortality across the lifespan is dominated by infectious diseases. We report three novel observations: first, APOE ε4 in populations living in an adverse environment was positively associated with plasma levels of cholesterol and triglycerides, as in affluent populations; second, APOE ε4 did not act a survival disadvantage, in contrast to affluent populations with low pathogen exposure; and third, in women exposed to higher pathogen levels APOE ε4 was associated with greater fertility and survival of offspring.



**Fig 1. Levels of lipids, mortality and fertility per number of APOE ε4.**

<https://doi.org/10.1371/journal.pone.0179497.g001>



## APOE $\epsilon 4$ , lipids, and survival

The observed APOE  $\epsilon 4$ , associations with plasma cholesterol and triglycerides in this Ghanaian study population, is of interest in two regards. First, the association of APOE  $\epsilon 4$  with elevated blood lipids has been documented for affluent populations with low levels of infections only. The association of APOE  $\epsilon 4$  with elevated cholesterol, triglycerides and apoB holds, despite the remarkable low levels of plasma cholesterol, triglycerides and apoB found in the Ghanaian population, where infections are highly prevalent. A similarly low cholesterol level was seen in the Tsimane, indigenous farmer-foragers of Bolivia, who also suffer high mortality from a high pathogen load [30]. Second, while APOE  $\epsilon 4$  was associated with higher levels of triglycerides and cholesterol, in contrast to affluent populations with a low pathogen exposure, APOE  $\epsilon 4$  did not have a detrimental and possibly a beneficial effect on survival in this Ghanaian population with its high pathogen exposure. This is consistent with our earlier findings on the Afrikaaner-2 mutation, which elevated cholesterol, but also conferred a survival benefit in Europe before 1900 in an endemically infected population [13], whereas, after 1900 as infections declined, this mutation decreased survival. We conclude that contemporary observations in affluent societies showing the late life detrimental effects of APOE  $\epsilon 4$  are best considered as an example of specific gene-environmental interaction [1–8].

## APOE $\epsilon 4$ and fertility

In addition to its relative survival benefit, APOE  $\epsilon 4$  was associated with higher fertility. In women exposed to high pathogen levels, APOE  $\epsilon 4$  was associated with an increased number of reported offspring. These findings show the advantage of determining fertility in a population with a low level use of contraception, i.e. women from our reported/retrospective cohort on fertility. Among these women who largely did not use contraception, fertility was associated with APOE  $\epsilon 4$ , in those exposed to high pathogen levels. These differences in fertility in relation to APOE  $\epsilon 4$  however, are not apparent in a population where contraception use is more widespread, i.e. our prospective cohort. The effects of APOE  $\epsilon 4$  on fecundity seem harder to detect where contraception influences fertility.

Our observations on APOE  $\epsilon 4$  and fertility extends findings from rural Ecuador, where APOE  $\epsilon 4$  carrying women had more offspring [31]. Moreover, young regularly menstruating women with APOE  $\epsilon 4$  in rural and urban Poland have higher levels of progesterone in the luteal phase, suggesting a higher fecundability [32]. However, the findings from these two studies are based on relatively small samples.

Finally, the data on fertility could be hampered. One could argue that the data for APOE  $\epsilon 4$  homozygotes is influenced due to the low sample size,  $n = 19$ . We therefore did two additional analysis, first we showed that the APOE  $\epsilon 4$  allele frequency was similar in those exposed to the high pathogen levels vs those exposed to low pathogen levels (S3 Table). Second we showed that our results remained similar when we compared those without APOE  $\epsilon 4$  to those with one or two APOE  $\epsilon 4$ . In subjects in environments with high pathogen exposure, those with one or two APOE  $\epsilon 4$  had more offspring compared to those without an APOE  $\epsilon 4$ . These additional analysis underscore the idea that at least presence of one APOE  $\epsilon 4$ , contributes to increased fertility in environments with high pathogen exposure.

Together, our empirical findings support the hypothesis that APOE  $\epsilon 4$  was maintained by Darwinian adaptive value in environments with a high pathogen exposure, where reproduction has been favoured and where limited survival to later ages would have delayed detrimental effects of APOE  $\epsilon 4$  that include atherosclerotic disease [1–4], Alzheimer's disease [1,3,5,6], and accelerated cognitive decline. Moreover, the detrimental effects of APOE  $\epsilon 4$  may be less apparent in environments with a high pathogen exposure such as rural Ghana, wherein, due to

limited access to nutrition and daily demanding physical activity, ischemic atherosclerotic disease is relatively rare [19]. We and others have hypothesized that the APOE  $\epsilon 4$  allele may have beneficial or detrimental effects depending on environmental factors. According to the antagonistic pleiotropy hypothesis [11,12], earlier in human evolution, the APOE  $\epsilon 4$  allele conferred a selective advantage by increasing pathogen resistance when mortality was dominated by infections, with delayed adverse consequences at later ages which were on weaker selection. Such adaptive value has diminished with declining infections during the past century.

Lastly, we consider the APOE  $\epsilon 2$  allele, which was 1% more common than expected in the Ghanaian study population, consistent with its relatively high prevalence in African populations [9,10]. In contrast to the APOE  $\epsilon 4$  allele, the APOE  $\epsilon 2$  allele did not confer benefits to either survival or fertility. We suggest that the potential effects of the APOE  $\epsilon 2$  allele are smaller than those of the APOE  $\epsilon 4$  allele, which may require a larger population to be detected or could be a result of genetic drift rather than natural selection. Alternatively, that the potential effects of the APOE  $\epsilon 2$  allele may be dependent on environmental conditions other than pathogen exposure.

## Conclusions

We show novel findings that APOE  $\epsilon 4$  did not negatively affect survival in a contemporary environment dominated by infectious diseases. Additionally, APOE  $\epsilon 4$  was associated with a higher number of offspring in women exposed to high pathogen levels. The latter findings suggest the Darwinian selective advantage of APOE  $\epsilon 4$  by enhancing fertility under adverse environmental conditions of a high pathogen exposure. Such prior associations with pathogen resistance may explain its persistence in affluent populations with low pathogen exposure, despite its late life deleterious effects.

## Supporting information

**S1 Fig. Levels of lipids, mortality and fertility per number of APOE  $\epsilon 4$ , unadjusted analysis.**

(TIFF)

**S1 Table. Frequencies of APOE genotypes in the Ghanaian study population.**

(DOCX)

**S2 Table. Frequency of APOE genotypes among individuals exposed to high or low pathogen levels, i.e those having access to unsafe or safe water.**

(DOCX)

**S3 Table. Levels of lipids and inflammatory markers, survival, and fertility by number of APOE  $\epsilon 2$ .**

(DOCX)

**S4 Table. Association of the genotypes of APOE  $\epsilon 3/\epsilon 4, \epsilon 2/\epsilon 4$  and  $\epsilon 2/\epsilon 3$  with survival.**

(DOCX)

**S5 Table. Association of the genotypes of APOE  $\epsilon 3/\epsilon 4, \epsilon 2/\epsilon 4$  and  $\epsilon 2/\epsilon 3$  with survival.**

(DOCX)

**S6 Table. Association of the genotypes of APOE  $\epsilon 3/\epsilon 4, \epsilon 2/\epsilon 4$  and  $\epsilon 2/\epsilon 3$  fertility.**

(DOCX)

**S7 Table. Reported and observed fertility in individuals carrying one or two APOE  $\epsilon$ 4 compared with those not carrying APOE  $\epsilon$ 4.**

(DOCX)

**S8 Table. Comparison of reported and observed fertility in individuals carrying one or two APOE  $\epsilon$ 4.**

(DOCX)

## Acknowledgments

The authors are grateful for the dedicated assistance of the local staff of the research team in the Garu-Tempene District in Ghana.

## Author Contributions

**Conceptualization:** EvE JJEK DvB CEF RGJW.

**Data curation:** EvE JJEK PdK.

**Formal analysis:** EvE JJEK.

**Funding acquisition:** RGJW.

**Investigation:** JJM JBZ.

**Methodology:** EvE JJEK DvB JJM JBZ PdK CEF RGJW.

**Project administration:** EvE JJM JBZ JJEK DvB RGJW.

**Resources:** JJM JBZ DvB RGJW.

**Software:** EvE JJEK.

**Supervision:** JBZ DvB RGJW.

**Validation:** EvE JJEK DvB CEF RGJW.

**Visualization:** EvE JJEK.

**Writing – original draft:** EvE JJEK DvB CEF RGJW.

**Writing – review & editing:** EvE JJEK DvB JJM JBZ PdK CEF RGJW.

## References

1. Mahley RW, Rall SC Jr. Apolipoprotein E: far more than a lipid transport protein. *Annu. Rev. Genomics Hum. Genet.* 2000; 1:507–537. <https://doi.org/10.1146/annurev.genom.1.1.507> PMID: 11701639
2. Franceschini N, Carty C, Bůzková P, Reiner AP, Garrett T, Lin Y, et al. Association of genetic variants and incident coronary heart disease in multiethnic cohorts: the PAGE study. *Circ. Cardiovasc. Genet.* 2011; 4:661–672. <https://doi.org/10.1161/CIRCGENETICS.111.960096> PMID: 22042884
3. Hofman A, Ott A, Breteler MM, Bots ML, Slooter AJ, van Harskamp F, et al. Atherosclerosis, apolipoprotein E, and prevalence of dementia and Alzheimer's disease in the Rotterdam Study. *Lancet.* 1997; 349:151–4. [https://doi.org/10.1016/S0140-6736\(96\)09328-2](https://doi.org/10.1016/S0140-6736(96)09328-2) PMID: 9111537
4. Humphries SE, Morgan L. Genetic risk factors for stroke and carotid atherosclerosis: insights into pathophysiology from candidate gene approaches. *Lancet Neurol.* 2004; 3:227–35. [https://doi.org/10.1016/S1474-4422\(04\)00708-2](https://doi.org/10.1016/S1474-4422(04)00708-2) PMID: 15039035
5. Kulminski AM, Culminskaya I, Ukraintseva SV, Arbeev KG, Arbeeva L, Wu D, et al. Trade-off in the effects of the apolipoprotein E polymorphism on the ages at onset of CVD and cancer influences human lifespan. *Aging Cell* 2011; 10:533–541. <https://doi.org/10.1111/j.1474-9726.2011.00689.x> PMID: 21332925

6. Deelen J, Beekman M, Uh HW, Helmer Q, Kuningas M, Christiansen L, et al. Genome-wide association study identifies a single major locus contributing to survival into old age; the APOE locus revisited. *Aging Cell* 2011; 10:686–698. <https://doi.org/10.1111/j.1474-9726.2011.00705.x> PMID: 21418511
7. Blennow K, de Leon MJ, Zetterberg H. Alzheimer's disease. *Lancet* 2006; 368:387–4038. [https://doi.org/10.1016/S0140-6736\(06\)69113-7](https://doi.org/10.1016/S0140-6736(06)69113-7) PMID: 16876668
8. Genin E, Hannequin D, Wallon D, Slegers K, Hiltunen M, Combarros O, et al. APOE and Alzheimer disease: a major gene with semi-dominant inheritance. *Mol Psychiatry*. 2011; 16:903–7. <https://doi.org/10.1038/mp.2011.52> PMID: 21556001
9. Mastana SS, Calderon R, Pena J, Reddy PH, Papiha SS. Anthropology of the apolipoprotein E (apo E) gene: low frequency of apo E4 allele in Basques and in tribal (Baiga) populations of India. *Ann Hum Biol.* 1998; 25:137–43. PMID: 9533513
10. Singh PP, Singh M, Mastana SS. APOE distribution in world populations with new data from India and the UK. *Ann Hum Biol.* 2006; 33:279–308. <https://doi.org/10.1080/03014460600594513> PMID: 17092867
11. Martin G. M. APOE alleles and lipophylic pathogens. *Neurobiol. Aging* 1999; 20:441–443. PMID: 10604437
12. Finch CE, Morgan TE. Systemic inflammation, infection, ApoE alleles, and Alzheimer disease: a position paper. *Curr. Alzheimer Res.* 2007; 4:185–189. PMID: 17430245
13. Sijbrands EJ, Westendorp RG, Defesche JC, de Meier PH, Smelt AH, Kastelein JJ. Mortality over two centuries in large pedigree with familial hypercholesterolaemia: family tree mortality study. *BMJ.* 2001; 28:322:1019–1023.
14. Austad SN. Retarded senescence in an insular population of Virginia opossums (*Didelphis virginiana*). *J Zool* 229 2009; 4:695–708.
15. Olsen EM, Heino M, Lilly GR, Morgan MJ, Bratley J, Ernande B, Dieckmann U. Maturation trends indicative of rapid evolution preceded the collapse of northern cod. *Nature.* 2004; 428:932–5. <https://doi.org/10.1038/nature02430> PMID: 15118724
16. Reznick D. A., Bryga H. & Endler J. A. Experimentally induced life-history evolution in a natural population. *Nature* 1990; 346: 357–359.
17. Engelaer FM, Koopman JJ, van Bodegom D, Eriksson UK, Westendorp RG. Determinants of epidemiologic transition in rural Africa: the role of socioeconomic status and drinking water source. *Trans. R. Soc. Trop. Med. Hyg.* 2014; 108:372–379. <https://doi.org/10.1093/trstmh/tru053> PMID: 24812066
18. Ghana Health Service 2012 Annual Report: Upper East Region (Ghana Health Service, 2012).
19. Koopman JJ, van Bodegom D, Jukema JW, Westendorp RG. Risk of cardiovascular disease in a traditional African population with a high infectious load: a population-based study. *PLoS One.* 2012; 7: e46855. <https://doi.org/10.1371/journal.pone.0046855> PMID: 23071653
20. Boef AG, May L, van Bodegom D, van Lieshout L, Verweij JJ, Maier AB, et al. Parasitic infections and immune function: effect of helminth infections in a malaria endemic area. *Immunobiology* 2013; 218:706–711. <https://doi.org/10.1016/j.imbio.2012.08.273> PMID: 22999162
21. van Bodegom D, May L, Kuningas M, Kaptijn R, Thomése F, Meij HJ, et al. Socio-economic status by rapid appraisal is highly correlated with mortality risks in rural Africa. *Trans. R. Soc. Trop. Med. Hyg.* 2009; 103:795–800. <https://doi.org/10.1016/j.trstmh.2008.12.003> PMID: 19178922
22. Kuningas M, May L, Tamm R, van Bodegom D, van den Biggelaar AH, Meij JJ, et al. Selection for genetic variation inducing pro-inflammatory responses under adverse environmental conditions in a Ghanaian population. *PLoS One.* 2009; 11, e7795.
23. May L, van den Biggelaar AH, van Bodegom D, Meij HJ, de Craen AJ, Amankwa J, et al. Adverse environmental conditions influence age-related innate immune responsiveness. *Immun. Ageing.* 2009; 6:7. <https://doi.org/10.1186/1742-4933-6-7> PMID: 19480711
24. Meij JJ, van Bodegom D, Ziem JB, Amankwa J, Polderman AM, Kirkwood TB, et al. Quality-quantity trade-off of human offspring under adverse environmental conditions. *J. Evol. Biol.* 2009; 22:1014–1023. <https://doi.org/10.1111/j.1420-9101.2009.01713.x> PMID: 19298492
25. May L, Kuningas M, van Bodegom D, Meij HJ, Frolich M, Slagboom PE, et al. Genetic variation in pentraxin (PTX) 3 gene associates with PTX3 production and fertility in women. *Biol. Reprod.* 2010; 82: 299–304. <https://doi.org/10.1095/biolreprod.109.079111> PMID: 19846603
26. Koopman JJ, Pijpe J, Böhringer S, van Bodegom D, Eriksson UK, Sanchez-Faddeev H, et al. Genetic variants determining survival and fertility in an adverse African environment: a population-based large-scale candidate gene association study. *Aging.* 2016; 8:1364–83 <https://doi.org/10.18632/aging.100986> PMID: 27356285
27. National Cholesterol Education Program (NCEP), National Institutes of Health. Third Report of the National Cholesterol Education Program (NCEP) Expert Panel on Detection, Evaluation, and Treatment

- of High Blood Cholesterol in Adults (Adult Treatment Panel III). Final Report. *Circulation* 2002; 106:3143–3421.
28. International Union for the Scientific Study of Population 2005 <http://iussp2005.princeton.edu/papers/51758>
  29. Ghana Health Service 2003 Annual Report; <http://www.statsghana.gov.gh/nada/index.php/catalog/85>
  30. Vasunilashorn S, Crimmins EM, Kim JK, Winking J, Gurven M, Kaplan H, et al. Blood lipids, infection, and inflammatory markers in the Tsimane of Bolivia. *Am. J. Hum. Biol.* 2010; 22:731–740. <https://doi.org/10.1002/ajhb.21074> PMID: 20721985
  31. Corbo RM, Ulizzi L, Scacchi R, Martínez-Labarga C, De Stefano GF. Apolipoprotein E polymorphism and fertility, a study in pre-industrial populations. *Mol. Hum. Reprod.* 2004; 10:617–620. <https://doi.org/10.1093/molehr/gah082> PMID: 15220465
  32. asienska G, Ellison PT, Galbarczyk A, Jasienski M, Kalemba-Drozd M, Kapiszewska M, et al. Apolipoprotein E (ApoE) polymorphism is related to differences in potential fertility in women: a case of antagonistic pleiotropy? *Proc. Biol. Sci.* 2015; 282: 20142395. <https://doi.org/10.1098/rspb.2014.2395> PMID: 25673673