

Sex in Cheese: Evidence for Sexuality in the Fungus *Penicillium roqueforti*

Jeanne Ropars^{1*}, Joëlle Dupont¹, Eric Fontanillas², Ricardo C. Rodríguez de la Vega², Fabienne Malagnac^{3,5}, Monika Coton⁴, Tatiana Giraud², Manuela López-Villavicencio¹

1 Department Systématique et Evolution, Origine, Structure, Evolution de la Biodiversité, UMR 7205 CNRS-MNHN, Muséum National d'Histoire Naturelle, Paris, France, **2** Ecologie, Systématique et Evolution, Université Paris-Sud, Orsay, France, **3** Université Paris-Sud, Institut de Génétique et Microbiologie, UMR 8621, Orsay, France, **4** Université de Brest, UEB, Laboratoire Universitaire de Biodiversité et d'Ecologie Microbienne EA 3882, IFR148 SFR ScInBioS, ESMISAB, Technopôle Brest-Iroise, Plouzané, France, **5** Université Paris Diderot, Sorbonne Paris Cité, UFR des Sciences du Vivant, Paris, France

Abstract

Although most eukaryotes reproduce sexually at some moment of their life cycle, as much as a fifth of fungal species were thought to reproduce exclusively asexually. Nevertheless, recent studies have revealed the occurrence of sex in some of these supposedly asexual species. For industrially relevant fungi, for which inoculums are produced by clonal-subcultures since decades, the potentiality for sex is of great interest for strain improvement strategies. Here, we investigated the sexual capability of the fungus *Penicillium roqueforti*, used as starter for blue cheese production. We present indirect evidence suggesting that recombination could be occurring in this species. The screening of a large sample of strains isolated from diverse substrates throughout the world revealed the existence of individuals of both mating types, even in the very same cheese. The MAT genes, involved in fungal sexual compatibility, appeared to evolve under purifying selection, suggesting that they are still functional. The examination of the recently sequenced genome of the FM 164 cheese strain enabled the identification of the most important genes known to be involved in meiosis, which were found to be highly conserved. Linkage disequilibria were not significant among three of the six marker pairs and 11 out of the 16 possible allelic combinations were found in the dataset. Finally, the detection of signatures of repeat induced point mutations (RIP) in repeated sequences and transposable elements reinforces the conclusion that *P. roqueforti* underwent more or less recent sex events. In this species of high industrial importance, the induction of a sexual cycle would open the possibility of generating new genotypes that would be extremely useful to diversify cheese products.

Citation: Ropars J, Dupont J, Fontanillas E, Rodríguez de la Vega RC, Malagnac F, et al. (2012) Sex in Cheese: Evidence for Sexuality in the Fungus *Penicillium roqueforti*. PLoS ONE 7(11): e49665. doi:10.1371/journal.pone.0049665

Editor: Nicolas Corradi, University of Ottawa, Canada

Received: June 26, 2012; **Accepted:** October 11, 2012; **Published:** November 21, 2012

Copyright: © 2012 Ropars et al. This is an open-access article distributed under the terms of the Creative Commons Attribution License, which permits unrestricted use, distribution, and reproduction in any medium, provided the original author and source are credited.

Funding: This work was partly supported by the ANR project "Food Microbiomes" (ANR-08-ALIA-007-02) coordinated by Pierre Renault and by the SPPAIL (Syndicat Professionnel des Producteurs d'Auxiliaires pour l'Industrie Laitière). TG acknowledges the grant FungiSex ANR-09-0064-01. RCRDIV research receives funding from the European Union Seventh Framework Programme (FP7/2007–2013) under grant agreement No. 246556. The funders had no role in study design, data collection and analysis, decision to publish, or preparation of the manuscript.

Competing Interests: The authors have declared that no competing interests exist.

* E-mail: jropars@mnhn.fr

Introduction

The maintenance of sex remains one of the most fundamental questions in evolutionary biology. In sexually reproducing organisms, recombination breaks down favourable gene combinations built by past selection. Moreover, when males contribute little or no resources to their progeny, a mutation causing females to reproduce asexually is expected to thrive because its frequency doubles at each generation (which is known as the 'twofold cost of sex') [1]. Various additional costs associated with mating apply to more specific cases, including costs of finding and courting a mate, risks of predation, of contracting sexually transmitted diseases or parasitic genetic elements [2]. Despite these heavy costs, most eukaryotes engage in sexual recombination at least at some point in their life cycle. Sexual reproduction seems essential for the long-term persistence of species [3] and only a few long lived asexual lineages are known to persist on the long-term without sex [4,5]. But even in some of these textbook "evolutionary scandals", such as bdelloid rotifers or Glomeromycota fungi, cryptic sex has been suggested to exist based, for example, on the presence of functional

meiotic genes [6,7]. Sex is indeed considered to provide some advantages that would balance its costs. Empirical studies have shown that sex reduces the accumulation of deleterious mutations compared to asexual reproduction [8]. It can also lead to a more rapid adaptive response by bringing together beneficial mutations, allowing their fixation in the populations, especially in harsh environments where selection is strong [5,9,10].

In most multicellular eukaryotes, sexual reproduction is regulated by strict mechanisms governing which haploids can fuse at syngamy. These mechanisms called mating types, sexes or genders, control and limit the number of compatible mates in a population. Mating compatibility can be controlled for instance by dimorphic sex chromosomes in mammals, or by more polymorphic systems involving dozens to hundreds of alleles determining mating types in other groups, such as the self-incompatibility system in plants and mating types in fungi and protists.

In Ascomycota fungi, mating compatibility is regulated by two highly dissimilar idiomorphs (named as such rather than alleles due to the uncertainty of their origin by common descent) that are

located at the mating type locus [11]. Ascomycota are bipolar, *i.e.* compatibility is determined by idiomorphs at a single locus [12]. MAT genes code for transcription factors that induce the production of pheromones and pheromone receptors [13] and they can also be involved in a number of mating functions related to sexual differentiation and sexual development [13]. Sexual reproduction in heterothallic Ascomycota can only occur between two haploid individuals carrying alternate idiomorphs at the MAT locus. Homothallic fungi do not need a mate being different at the MAT locus to reproduce meiotically, most often because each haploid carries both idiomorphs in its genome. Each haploid is therefore compatible with every other haploid in the population and syngamy is even possible between clonemates in a process called same-clone mating or haploid selfing [14].

Fungi are a group historically considered to present a high proportion of asexual species; a fifth of species were once thought to reproduce exclusively asexually [15]. Sex is considered to have been lost several times independently in groups such as the *Penicillium* subgenus *Biverticillium* [16,17]. However, many of these supposedly asexual species have been found to actually reproduce sexually in nature, as evidenced by population genetics [18–20], or have been shown to reproduce successfully under lab conditions [21]. Other signs of sex in supposedly asexual species include footprints of Repeat Induced Point mutations (RIP), an irreversible similarity-dependent gene mutation mechanism specific to fungi, occurring only during the sexual stages on repeated sequences [22]. Finally, in some species considered to be asexual, the MAT locus has been identified (see [22] for reviews), and in some species, idiomorphs have even been found to evolve under purifying selection, as expected for functional genes [17,23]. Such evidence suggests that sexual reproduction is still occurring in nature, or that it occurred until recently, because constraints on genes involved in sexual reproduction would be expected to be relaxed in asexual species.

Here, we investigated the possibility of sex in the ascomycete fungus *Penicillium roqueforti*. This filamentous Ascomycota is used as a starter culture for the production of most blue veined-cheeses worldwide (Roquefort in France, Danablu in Denmark, Cabrales in Spain or Gorgonzola in Italy). In contrast to other cheese fungi, *P. roqueforti* is not exclusively found in dairy environments. Indeed, its capacity to tolerate cold temperatures, low oxygen concentrations, alkali and weak acid preservatives, makes this species a common spoilage agent in refrigerated stored foods, meat, wheat products, silage and even forest soil and wood [24–26]. This fungus is of great economic importance, as shown by the production of 56,865 tons of blue veined cheeses in France each year [27]. In cheese industries, spores of *P. roqueforti*, bought from starter strain producers who exclusively grow the fungus by clonal subcultures, are introduced into the cheese curd. Thus, as in many biotechnological species, strains used in cheese making are clones maintained by asexual replication. Strain improvement therefore only relies on random mutagenesis, followed by screening for variants exhibiting enhanced properties of interest [11], such as growth, mycelium thickness and colonies colour or lipolytic and proteolytic actions. Creating genetic variation through mating and recombination would be of great interest. Indeed, the emergence of new genotypes is expected to be faster in sexually reproducing clades where recombination bring together new mutations appearing in different individuals [10,28]. Sex is also known to be important for purging faster deleterious mutations that accumulate during clonal propagation [8]. Until recently, the two other species belonging to the same clade as *P. roqueforti* (the *Penicillium* series *roqueforti*), *i.e.* *P. paneum* and *P. carneum*, were also considered asexual [29]. However, a new species producing

cleistothecia was discovered in 2010 and assigned to this clade on the basis of phenotypic characters, sequences and extrolite patterns [30].

We searched for footprints of sex in the species *P. roqueforti* using genomic and molecular approaches. A large collection of *P. roqueforti* strains coming from different geographical locations worldwide was screened in order to assess whether ratios of mating types were balanced, which is an indication of regular sex [31]. We used molecular markers (two microsatellites, the β -tubulin gene and the MAT locus) to look for footprints of recombination. Moreover, we took advantage of the recently sequenced genome of a *P. roqueforti* strain isolated from cheese environment (strain FM 164, Ropars et al., unpublished data) to identify a large set of genes involved in the meiotic machinery and to search for footprints of Repeat Induced Point mutation (RIP) in the genome. Finally, we analysed the selective pressures acting on mating type genes and in a subset of genes essential for meiosis in order to assess if these genes evolved under purifying selection, as expected for functional genes [23].

Materials and Methods

Fungal Isolates

The *P. roqueforti* FM 164 sequenced isolate used as inoculum during cheese production was used (unpublished data). A total of 126 other isolates of *P. roqueforti* coming from 14 different countries were also screened (Table S1): 43 isolates (including the FM 164 sequenced strain) from the cheese environment were provided by French producers of starter cultures and cheeses, and were designated as FM numbers to keep their origin confidential. A total of 16 strains isolated from diverse environments such as silage or the interior of refrigerators were obtained from public collections (CBS, LCP, MUCL), including the type strain (Table S1). Monospore isolation was systematically made when commercial dairy strains were received using a dilution method to guarantee the presence of pure isolated colonies. Finally, 68 other isolates were directly isolated from 38 different cheeses coming from 14 countries throughout the world and were designated as “F” numbers. The number after the “F”, from 1 to 38, corresponds to the individual cheese. These 68 “F” strains were obtained by dilution of spores in order to obtain single colonies and to isolate the different morphotypes grown for 3–5 days at 25°C on Malt Agar. For each of the 38 cheeses, morphologically different strains were selected and treated as different individuals. These individuals are labelled by a number following the one identifying the cheese (e.g. F37.1 and F37.4 are two individuals isolated from the same cheese, labelled 37).

DNA Extraction, PCR Amplification and Sequencing

Genomic DNA was extracted from fresh mycelium of isolates listed in Table S1 grown for 3–5 days on Malt Agar. The Qiagen DNeasy Plant Mini Kit (Qiagen, Ltd. Crawley, UK) was used for extraction and purification. Strains were identified using the 5' end of the β -tubulin gene (oligonucleotide primer set Bt2a/Bt2b [32]) in order to check that they belonged to the *P. roqueforti* species [29]. Sequences of the β -tubulin are identical but three bp localized in a non-coding region, splitting the species into two subclades. The β -tubulin sequences of *P. roqueforti* strains belonging to these two subclades had been deposited in GenBank, for example, accession numbers HQ442359.1 [30] and AY674380 [29] for one clade and AY674383.1 [29] and AY674382.1 [29] for the other.

The mating type oligonucleotide primer sets used in this study were designed in conserved regions of MAT1-1 and MAT1-2,

using Primer3 online (http://www.frodo.wi.mit.edu/cgi-bin/primer3/primer3_www.cgi). In order to obtain the MAT1-1 sequence of *P. roqueforti* (Accession number JX627318 for the FM 317 strain), we used the sequences of the close relatives *P. chrysogenum* Wisconsin [33], *Eupenicillium crustaceum* [34], *P. fuscoglaucum* (Accession number JX627319) and *P. paneum* (Accession number JX627320). For MAT1-2, we used the genomic sequence of *P. roqueforti* FM 164 (Accession number JX627321). Primers sequences used were CTG-GGC-CAC-GTT-TTG-TCT-AT for MAT1-1F, ATT-GGC-CAC-TGA-GGA-ACA-TC for MAT1-1R and CDC-CCA-YCT-TCC-YCA-GAC-T for MAT1-2F, RCG-ACG-AGG-AGC-RTA-YTG-AT for MAT1-2R. All the *P. roqueforti* isolates were screened by PCR for mating type idiomorphs.

The structure of the idiomorph MAT1-2 was recovered using the genomic sequence of *P. roqueforti*.

We genotyped the strains at all available microsatellite markers [35] but only PC4 and PC13 revealed polymorphic.

PCRs were performed in 50 μ l reactions, using 25 μ l of template DNAs, 1.25 U of AmpliTaq DNA polymerase (Roche Molecular Systems, Inc., Branchburg, NJ, USA), 5 μ l of 10X Taq DNA Polymerase buffer, 5 μ l of 50% glycerol, 2 μ l of 5 mM dNTPs (Eurogentec, Seraing, Belgium), 2 μ l of each 10 μ M primer and 50–100 ng template DNA. Amplifications were performed in a BioRad DNA Engine Peltier Thermal cycler with 35 cycles of 30 s at 94°C, 30 s at 56°C and 60 s at 72°C. The PCR program was followed by a final 7 min extension step at 72°C.

Orthology Search of the Meiotic Toolbox

Via a BLASTP search using the best reciprocal hit method (BRH), the genome of *P. roqueforti* (strain FM 164) was screened for a previously described set of 88 *Neurospora crassa* conserved proteins involved in meiosis [36] (Table S2).

Detection of RIP

Using the sequenced genome of *Penicillium roqueforti* FM 164, we searched for RIP-like footprints in both repeated sequences and in some transposable element families. Repeated sequences were obtained by BLASTing all predicted CDS sequences of the *P. roqueforti* genome against each other using MEGABLAST. Sequences were then clustered using the following criteria: the alignment should cover 400 bp of the query protein sequence, the identity must be greater than 80%. To detect the TE families, three known transposable elements families were selected in the *P. chrysogenum* Wisconsin 54–1255 genome available online (Genbank accession NS_000201, newly re-identified as *P. rubens*, [37]): Copia-like LTR retrotransposons belonging to the class I (RNA mediated elements retrotransposons), Tan transposons belonging to the Pogo family in the Tc1/mariner superfamily of class II (DNA mediated elements transposons), and Tc5, also belonging to the class II transposons. The transposable elements were identified in the *P. roqueforti* genome via a BLASTP search. Multiple sequence alignments were then built using ClustalW with default settings [38]. RIP involves transitions from C:G to T:A nucleotides in pairs of duplicated sequences during the dikaryotic phase between mating and meiosis, usually targeting a specific dinucleotide site. These changes in dinucleotide frequencies can be used to identify RIP-affected repeats by measuring the ratios of pre-RIP and post-RIP di-nucleotides within a set of repeated sequences, thus generating so-called RIP indices, or by identifying specific target RIP-site in alignments showing C:G to T:A polymorphism. RIP-like footprints were searched for using the software RIPCAL [39], that uses RIP indices and alignment-based methods.

Assessing Selective Pressures

Patterns of selective pressure can be investigated using molecular evolution codon models and measuring the non-synonymous/synonymous substitution ratio (dN/dS), also referred to as ω . $\omega < 1$ indicates purifying selection, $\omega > 1$ suggests positive selection and $\omega = 1$ relaxed selection or neutral evolution [40–42]. We assessed the type of selective pressures for the following *P. roqueforti* genes: 1) mating type genes, 2) the twelve genes involved almost exclusively in meiosis and 3) the *rid* gene encoding a protein required for RIP.

Codon-based multiple sequence alignments were carried out using PAL2NAL [43] on the basis of protein sequences alignment with MAFFT [44]. Selective pressures were estimated using the web server SELECTON version 2.4 [45,46]. The server was run with the M8 model, assuming that ω values come from a mixture of a discrete beta distribution and an additional category $\omega_s \geq 1$ (positive selection), and compared with the M8a null model, assuming no positive selection [47,48]. Under the “selective” model (M8), the ω ratios (dN/dS) were estimated using a bayesian approach at each site of the protein, reporting either positive selection ($\omega > 1$), neutral evolution ($\omega = 1$) or purifying selection ($\omega < 1$).

1) Selective pressures acting on mating type genes. For assessing the selective pressures acting on mating type idiomorphs two alignments, including respectively the MAT1-1 and MAT1-2 sequences, were constructed. For *P. roqueforti*, we used the entire sequence of the MAT1-2 idiomorph from the sequenced strain FM 164 and the partial sequence of the MAT1-1 idiomorph obtained by PCR from another cheese strain (FM 317 strain). We also included the MAT1-1 and MAT1-2 sequences of the homothallic species *Eupenicillium crustaceum* whose mating type genes have been described [34], of the heterothallic species *P. chrysogenum* [49] and of close relatives of *P. roqueforti* from which genomes are currently being sequenced (*P. paneum*, *P. nalgiovense*, *P. camemberti*, *P. fuscoglaucum* and *P. biforme*) (Table 1). These five latter species appear heterothallic, containing a single MAT idiomorph (either MAT1-1 or MAT1-2) in their genome. Because a single haploid genome was available for each species, they were only represented in one of the two alignments (Table 1 for details). Both alignments contained six species: *E. crustaceum*, *P. roqueforti* and *P. chrysogenum* were represented in both alignments while *P. biforme*, *P. camemberti* and *P. nalgiovense* were only included in the MAT1-1 alignment, and *P. fuscoglaucum*, *P. paneum* and *P. carneum* only in the MAT1-2 alignment (Table 1). In all the cases, intron splicing was inferred manually based on the previously characterized *E. crustaceum* and *P. chrysogenum* sequences.

2) Divergence and selective pressures on meiotic genes. Divergence and selective pressures were investigated in a subset of 12 meiotic genes, selected among all the genes screened (Table S2) as those having a fundamental role in meiosis (“meiosis specific genes”, [50]). These 12 meiotic genes analysed were *spo11* and *ski8*, involved in double-strand breaks formation and processing, *DMC1*, *RAD51* and *RAD54*, involved in single strand invasion, *mutL*, *MSH4* and *MSH5*, involved in the regulation of crossover frequency, *mus50*, involved in DNA repair, *RAD21*, *rec8*, and a protein required for establishment and maintenance of sister chromatid cohesion, these three latter genes being involved in chromosome cohesion. Using a BLASTN search, these genes were extracted from the 6 other sequenced genomes, i.e. *P. rubens* Wisconsin 54–1255 [33], *P. paneum*, *P. nalgiovense*, *P. camemberti*, *P. biforme* and *P. fuscoglaucum*. Each alignment was then constructed using ClustalW [38]. Introns and insertion/deletion events were removed manually. In order to evaluate meiotic genes divergence between *P. roqueforti* and its close relative *P. paneum*, we constructed

Table 1. Strains included in either the MAT1-1 or MAT1-2 alignment for analyzing selection pressures.

Species	Isolate number	Mating type		Reference
		MAT 1-1	MAT 1-2	
<i>Penicillium roqueforti</i>	FM 164		×	Ropars et al., <i>in prep.</i>
<i>Penicillium roqueforti</i>	FM 317	×		This study
<i>Eupenicillium crustaceum</i>	CBS 244.32	×		Pöggeler et al., 2011
<i>Eupenicillium crustaceum</i>	CBS 244.32		×	Pöggeler et al., 2011
<i>Penicillium chrysogenum</i>	Wisconsin 54–1255	×		van den Berg et al., 2005
<i>Penicillium chrysogenum</i>			×	Hoff et al., 2008
<i>Penicillium fuscoglaucum</i>	FM 041	×		This study
<i>Penicillium paneum</i>	FM 227	×		This study
<i>Penicillium bifforme</i>	FM 169		×	This study
<i>Penicillium camemberti</i>	FM 013		×	This study
<i>Penicillium nalgiovense</i>	FM 193		×	This study

doi:10.1371/journal.pone.0049665.t001

gene trees under the maximum likelihood framework using PhymI package [51] with a Gamma distribution with 4 rate categories of across site rate variation. Trees were plotted in Seaview [52].

3) Selective pressure acting on the *rid* gene. The *rid* gene, the only gene known to be required for RIP process, was searched in the *P. roqueforti* genome as well as in the six other genomes used for selection analyses. Alignments were constructed following the same method described above.

Population Genetics Analyses

Linkage disequilibria among the four available polymorphic markers (Table S3) were computed using Genepop on the Web ([53,54], <http://genepop.curtin.edu.au/>).

Results

Analyses of Mating-type Loci

1) Structural organization. As expected for heterothallic species, the sequence of *P. roqueforti* revealed the presence of a single idiomorph in the genome, corresponding to MAT1-2. The flanking regions of MAT1-2, included upstream and downstream respectively the genes *APN2* (Accession number JX627322) and *SLA2* (Accession number JX627323) (Figure 1). This structural organization is similar to that of mating-type loci in many sexually reproducing filamentous ascomycetes, and in particular in *P. chrysogenum* [34,49], a close relative of *P. roqueforti* (Figure 1). In these two *Penicillium* species and other close relatives, such as *Aspergillus* species, the COX13 gene is lacking, while it is present in more distant ascomycete species at the MAT locus [55]. Compared to its homologue in *P. chrysogenum*, the MAT1-2 sequence contained two introns [49] and the protein was shorter by 9 amino-acids. Nucleotide identities of the *APN2*, *MAT1-2* and *SLA2* coding sequences between *P. chrysogenum* and *P. roqueforti* were 85.7%, 87% and 93.2% respectively.

2) Ratio of MAT idiomorphs. The screening of the 127 *P. roqueforti* isolates from diverse origins throughout the world revealed the presence of both idiomorphs in all regions, but indicated an overall significant departure from the 1:1 expected ratio ($\chi^2 = 11.98$; $df = 1$; $P = 0.001$) (frequency of strains detailed in Table S1). This resulted from the higher frequency of MAT1-2 individuals among the strains directly isolated from various kinds of cheeses (“F” strains). MAT1-1 and MAT1-2 frequencies were

indeed balanced in the FM strains used as inoculum during cheese production (23 strains carrying MAT1-1 and 20 MAT1-2) and in those coming from public collections isolated from non-cheese substrates (six strains carrying each MAT idiomorph). Interestingly, strains carrying alternative idiomorphs were isolated from the very same cheese in some cases (Table S1, among “F” strains).

3) Selective pressure on mating type genes. The SELECTION runs did not detect footprints of positive selection in either MAT1-1 or MAT1-2. This result suggests that these genes have evolved under purifying selection or in a nearly-neutral fashion (Figure 2). The log-likelihood values for the models M8 and M8a were almost identical (MAT1-1, $M8 = -3361.6$ and $M8a = -3361.59$; MAT1-2, $M8 = -3178.57$ and $M8a = -3178.59$). The LRT for the models M8 and M8a was consequently not significant. The observation of alignments for both MAT1-1 and MAT1-2 however showed a very low signal of divergence, which could bias the selection tests. The ω values per amino acid position nevertheless suggest that recent evolution of both idiomorphs were shaped by purifying selection as a large proportion of the sites were found to be under strong purifying selection ($\omega < 0.1$) in both idiomorphs (Figure 2), *i.e.* >70% and 50% for MAT1-1 and MAT1-2, respectively.

Meiotic Genes

All the important genes identified in the heterothallic sexually-reproducing fungus *N. crassa* as involved in meiosis were also present in *P. roqueforti* (Table S2). The divergence analysis on the subset of the 12 genes necessary for meiosis (Figure S1a-l) suggests that these genes are evolving more slowly in *P. roqueforti* than in its sister species *P. paneum*, supposedly asexual: nine of the twelve genes accumulated fewer substitutions along the *P. roqueforti* lineage than along the *P. paneum* lineage. This is confirmed by tests of positive selection (Table S4), showing that most of the sites in meiosis-related genes of *P. roqueforti* evolve under purifying selection (Table S4 for details, Figure S2 for an example) according to the site-specific test as incorporated in SELECTON. Interestingly, nine of the twelve genes contain a few sites under positive selection (assessed under the M8 model).

Repeat Induced Point Mutation (RIP) footprints

The only gene known to be necessary for RIP process, *rid*, was identified in the *P. roqueforti* genome. The SELECTION runs did

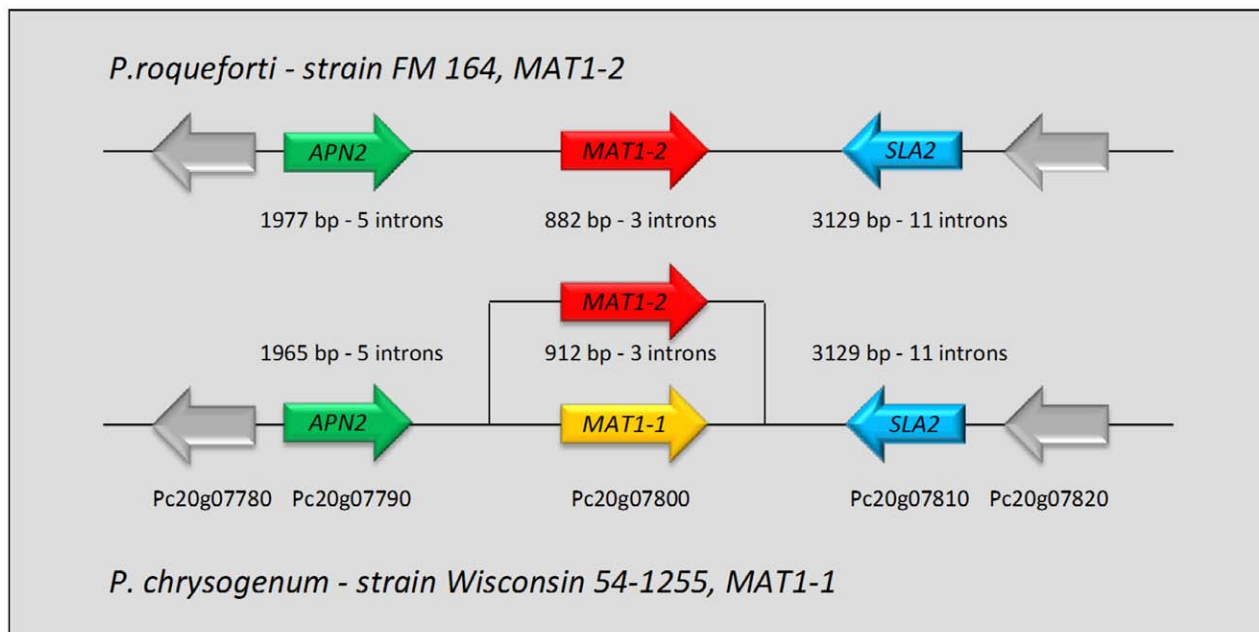


Figure 1. Schematic illustration of the Mating-type locus and the flanking of *Penicillium roqueforti* FM 164 (MAT1-2 strain) and its close relative *P. chrysogenum* Wisconsin 54-1255 (MAT1-1 strain). The transcriptional direction of the genes is indicated by an arrow. As the Wisconsin strain is a MAT1-1 strain, we identified the MAT1-2 gene in another *P. chrysogenum* strain (AM904545). Genes represented in both species by same colors show a nucleotide identity >80%.
doi:10.1371/journal.pone.0049665.g001

not detect any footprints of positive selection in the *rid* gene. The ω values per amino acid position suggest that recent evolution of the *rid* gene was shaped by purifying selection in a large proportion of the sites ($\omega < 0.1$).

RIP footprints were found in some repeated sequences in the genome of *P. roqueforti*. Among 102 clusters of genes sequence repeats showing more than 80% of identity over at least 400 bp, four displayed RIP signatures. When subjected to RIP, repeats show a characteristic substitution bias because RIP-induced mutations happen to be mostly C to T and G to A transitions. Functional gene families may however be protected against RIP. We therefore also examined transposable elements for RIP footprints. In the sequenced *P. roqueforti* strain, RIP-like footprints were detected in the three TE families analyzed for RIP-like signatures, namely Copia-like LTR retrotransposons (Figure 3), Tan transposons belonging to the Pogo family and the DNA transposons Tc5.

Footprints of Recombination

Among all the microsatellite markers typed and the genes sequenced, only four markers revealed polymorphism: the beta-tubulin (three alleles but one was carried by a single strain and was therefore not integrated in the test of recombination), the MAT locus (two alleles) and the microsatellites PC4 and PC13 (two alleles each). Linkage disequilibria were significant among three of the six marker pairs, which was expected given the frequency of

asexual propagation and the likelihood of population structure in our dataset from a worldwide collection. Nevertheless, three pairs of markers were not in significant linkage disequilibria and 11 out of the 16 possible allelic combinations were found in the dataset.

Discussion

In many fungal species, sexual reproduction has not been observed directly in natural populations or in the laboratory because the factors needed to induce sex are unknown. For most species, direct demonstration of sexual reproduction in the lab is very laborious and time consuming because the discovery of the suitable conditions demands numerous attempts [21,31]. Therefore, in many cases, the occurrence of sexual reproduction can only be indirectly inferred, as we do here with *P. roqueforti*.

In a great number of supposedly asexual species, population genetic analyses have nevertheless demonstrated the occurrence of recombination, such as in *Coccidioides immitis* [18,56]. A few species appear to show an extremely clonal population structure, such as the pathogen *Penicillium marneffei* [57] (but see [58] for a recent study showing footprints of occasional sexual reproduction in this species). We did find evidence of the occurrence of recombination as 11 out of the 16 possible allelic combinations were found in our dataset, and three of the six marker pairs did not display significant linkage disequilibria.

Further evidence for the occurrence of recombination was found using the MAT locus. The MAT1-1 and MAT1-2 mating



Figure 2. Color coded Selecton Results for a) MAT1-1 and b) MAT1-2 sequences of *Penicillium roqueforti*. Amino acids sites under purifying selection are colored in purple. Darker purple colors indicate stronger purifying selection and values of ω closer to 0. More than 70% of the sites for MAT1-1 and 50% for MAT1-2 are evolving under strong purifying selection.
doi:10.1371/journal.pone.0049665.g002

type idiomorphs were found in separate individuals of *P. roqueforti* as is generally the case for heterothallic species. The MAT1-1 and MAT1-2 idiomorphs in *P. roqueforti* did not show evidence of loss-of-function mutations and they seemed to evolve under strong purifying selection as expected in sexual species [17,23]. While the ratio of the two MAT idiomorphs was found to be balanced amongst strains belonging to public culture collections and those used as inoculum in cheese production, individuals carrying the MAT1-2 idiomorph were overrepresented in the “F” strains directly isolated from blue cheeses. A 1:1 ratio of mating types is considered as strong evidence that sexual reproduction is occurring in fungal populations, as drift is expected to drive one mating type to extinction in asexual species [59–63]. Balanced frequencies of mating types have been found in populations of species that had long been considered to be asexual before sex was successfully induced in lab conditions, e.g. in *Aspergillus fumigatus* [64]. A strong deviation from this 1:1 ratio has however been observed in some sexual species such as *Cryptococcus neoformans* [65]. Several reasons can account for a skewed mating type ratio in

sexually reproducing species. It may be that mating type genes are involved in other functions than mating regulation, such as in *C. neoformans*, where one of the mating types is associated with virulence [66]. Here, the overrepresentation of MAT1-2 individuals only among “F” strains directly isolated from cheeses could result from a bias in human selection of individuals carrying the MAT1-2 idiomorph. However, MAT1-1 and MAT1-2 were equally represented among the FM strains used as starter culture in cheese production, suggesting that they have been equally selected. Interestingly, we found *P. roqueforti* individuals carrying different idiomorphs in the very same cheese, such as in the French cheese Fourme d’Ambert (F5), in Latvian blue cheese (F28) or in the Spanish Picon Hoja cheese (F16) (see Table S1). Some industrials inoculate several strains having different desired characteristics (personal information). Our results show that both mating types can be found in the same environment, making sexual reproduction feasible and indicating the occurrence of more or less regular sex. Although no sexual structures have been

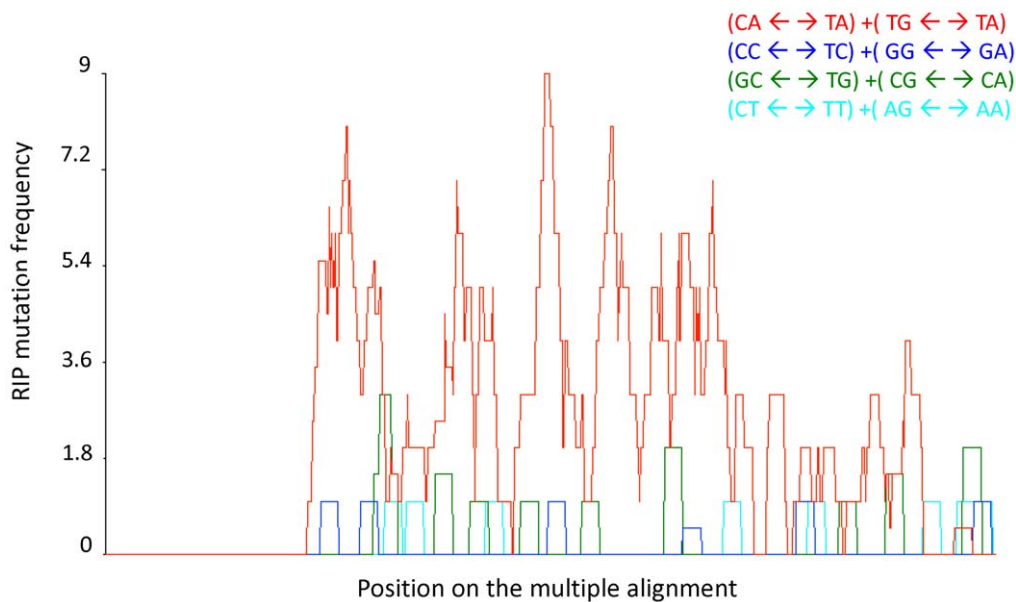


Figure 3. RIP mutation frequency plot over a rolling sequence window, corresponding to the multiple alignment (not shown). Nucleotide polymorphisms (against the alignment consensus, which is also the highest GC-content sequence) mostly correspond to CpA<->TpA or TpG<->TpA (red curve), as expected when RIP is acting.
doi:10.1371/journal.pone.0049665.g003

observed so far for this species, it would be extremely interesting to look for some in all environments linked to cheese production.

The finding of the genes needed for sexual reproduction in the genome suggests that meiosis could be occurring in *P. roqueforti*. The presence of meiotic genes has previously been used to suggest cryptic sex in some ancient asexuals such as the bdelloid rotifers or several species of the fungal genus *Glomus* [6,7], parasitic species in the *Giardia* genus [50] and *Trichomonas vaginalis* [67]. The analyses of divergence and selective pressures of 12 meiotic genes known to be necessary for meiosis [36,50], revealed that these genes are more conserved in *P. roqueforti* than in the other species included in the analyses, all considered asexual, and that they seem to evolve under strong purifying selection. Nevertheless, nine of the twelve genes showed a few sites evolving under positive selection. This could result from the fine-tuning of the meiotic function in *P. roqueforti* species in its new cheese environment. Taken together, the results of the divergence analysis and the test of positive selection strongly suggest that, overall, these genes are highly conserved in order to maintain their function, but that they also continue to adapt or adapted very recently at specific sites.

Finally, evidence for RIP-like footprints was found in the *P. roqueforti* genome (Figure 3). As RIP is a similarity-dependent gene silencing mechanism specific to fungi [68], which specifically operates during the dikaryotic phase [22], RIP signatures are evidence of more or less recent sex events [69]. RIP was experimentally shown to be a currently active process in *Neurospora crassa* [22,70–72], *Podospora anserina* [73], *Magnaporthe grisea* [74], *Leptosphaeria maculans* [75] and *Nectria haematococca* [76], species for which sexual reproduction can be efficiently performed in laboratory conditions. Nevertheless, *in silico* analyses showed RIP-like footprints in a large number of fungal genomes, mostly in Ascomycota, such as in several *Aspergillus* species [77–79], *Tuber melanosporum* [80], but also in Basidiomycota such as *Microbotryum violaceum* [81] and *Puccinia graminis* [82]. More generally these footprints have been observed in numerous species for which sexual reproduction has never been described such as *A. niger* [78], *Colletrichum cereale* [83] or *Coccidioides immitis* and *C. posadasii* [84]. As

RIP has never been shown to occur without sex, RIP-like footprints are evidence for the occurrence of more or less recent sexual reproduction, although the possibility remains that sex has been lost very recently. The RIP-like footprints found in some repeated sequences and three transposable elements families of *P. roqueforti* genome are therefore further evidence suggesting that this species undergoes sexual reproduction or that sex occurred recently.

Conclusion

In conclusion, several lines of indirect evidence suggest that *P. roqueforti* presents a sexual cycle or that it was able to reproduce sexually until recently: the screening of a large set of strains isolated from diverse substrates throughout the world revealed footprints of recombination, the presence of both idiomorphs, even in the very same cheese, and these genes appeared to evolve under purifying selection. Finally, the investigation of the recently sequenced genome FM 164 has allowed for the identification of a set of 88 proteins involved in meiosis and the detection of RIP-like footprints in repeated sequences and transposable elements. The detection of strong purifying selection acting on a subset of 12 genes required for meiosis and on the *rid* gene involved in RIP process indicates that these genes are maintained functional. In *P. roqueforti*, as in other species with economic importance, discovering the environmental conditions that promote or facilitate sexual reproduction would be extremely useful to allow classical strain improvement [11].

Supporting Information

Figure S1 Gene trees reconstructed under a ML framework (see methods) for 12 meiotic genes (a-l). Divergences are indicated on branches. a) DMC1; b) MSH5; c) mus50; d) mutL; e) RAD21; f) RAD51; g) RAD54; h) rec8; i) ski8; j) protein required for establishment and maintenance of sister chromatid cohesion; k) MSH4; l) SPO11. (DOC)

Figure S2 Color coded SELECTON Results for SPO11 sequence of *P. roqueforti*. 60% of the sites are evolving under purifying selection. (DOC)

Table S1 Isolates of *Penicillium roqueforti* used in this study. FM numbers represent isolates provided by French stakeholders and their origin is confidential; LCP, CBS and IMI strains come from public collections; F isolates were obtained from 38 different cheeses coming from 14 diverse countries throughout the world (given as F followed by one to two digit values from A to 38 corresponding to the different cheeses, a dot and a final digit corresponding to the isolate number). (DOC)

Table S2 Proteins of *Penicillium roqueforti* involved in meiosis and their homologs in *Neurospora crassa* as they were used for the BLASTP search. (DOC)

Table S3 Isolates of *Penicillium roqueforti* used for population genetic analyses. FM numbers represent isolates provided by

French stakeholders and their origin is confidential; LCP and IMI strains come from public collections. Four polymorphic markers were used: the MAT locus (MAT), the beta-tubulin (TUB) and the microsatellites PC4 and PC13. Each marker revealed polymorphism with two or three alleles each, coded 1, 2 and 3. (DOCX)

Table S4 Proteins tested under SELECTON runs that are essential for meiosis. The number of sites evolving under purifying and positive selection is indicated as number of sites evolving under purifying or positive selection/total number of sites of the protein – Percentage. Proteins tested under SELECTON runs that are essential for meiosis. (DOC)

Author Contributions

Conceived and designed the experiments: JR MLV. Performed the experiments: JR MC FM. Analyzed the data: JR RCRdIV EF FM. Contributed reagents/materials/analysis tools: RCRdIV EF FM MC JD. Wrote the paper: JR MLV TG.

References

- Maynard Smith J (1978) The Evolution of Sex. Cambridge, UK: Cambridge University Press.
- Lehtonen J, Jennions MD, Kokko H (2012) The many costs of sex. Trends in ecology & evolution 27: 172–178.
- Birky JR C (1999) An even broader perspective on sex and recombination. Journal of Evolutionary Biology 12: 1013–1016.
- Judson OP, Normark BB (1996) Ancient asexual scandals. Trends in Ecology & Evolution 11: 41–46.
- Goddard MR, Godfray H, Burt A (2005) Sex increases the efficacy of natural selection in experimental yeast populations. Nature 434: 636–640.
- Schurko AM, Neiman M, Logsdon JM (2009) Signs of sex: what we know and how we know it. Trends in ecology & evolution 24: 208–217.
- Halary S, Malik S-B, Lildhar L, Slamovits CH, Hijri M, et al. (2011) Conserved meiotic machinery in *Glomus* spp., a putatively ancient asexual fungal lineage. Genome Biology and Evolution 3: 950–958.
- Bruggeman J, Debets AJM, Wijngaarden PJ, de Visser JAGM, Hoekstra RF (2003) Sex slows down the accumulation of deleterious mutations in the homothallic fungus *Aspergillus nidulans*. Genetics 164: 479–485.
- Becks L, Agrawal AF (2012) The evolution of sex is favoured during adaptation to new environments. PLoS Biology 10: e1001317.
- Colegrave N (2002) Sex releases the speed limit on evolution. Nature 420: 664–666.
- Pöggeler S (2001) Mating-type genes for classical strain improvements of ascomycetes. Applied Microbiology and Biotechnology 56: 589–601.
- Bakkeren G, Kronstad J (2007) Bipolar and tetrapolar mating systems in the ustilaginales. In: Heitman J, Kronstad J, Taylor J, Casselton L, editors. Sex in Fungi: molecular determination and evolutionary implications. Washington, DC: ASM Press. 389–404.
- Coppin E, Debuchy R, Arnaise S, Picard M (1997) Mating types and sexual development in filamentous ascomycetes. Microbiology and Molecular Biology Reviews 61: 411–428.
- Billiard S, López-Villavicencio M, Devier B, Hood ME, Fairhead C, et al. (2011) Having sex, yes, but with whom? Inferences from fungi on the evolution of anisogamy and mating types. Biological Reviews 86: 421–442.
- Taylor JW, Jacobson D, Fisher M (1999) The evolution of asexual Fungi: reproduction, speciation and classification. Annual Review of Phytopathology 37: 197–246.
- Lobuglio AKF, Pitt JI, Taylor JW (1993) Phylogenetic Analysis of Two Ribosomal DNA Regions indicates multiple independent losses of a sexual *Talaromyces* state among asexual *Penicillium* species in subgenus Biverticillium. Mycologia 85: 592–604.
- López-Villavicencio M, Aguilera G, Giraud T, de Vienne DM, Lacoste S, et al. (2010) Sex in *Penicillium*: Combined phylogenetic and experimental approaches. Fungal genetics and biology 47: 693–706.
- Burt A, Carter DA, Koenig GL, White TJ, Taylor JW (1996) Molecular markers reveal cryptic sex in the human pathogen *Coccidioides immitis*. Proceedings of the National Academy of Science of the USA 93: 770–773.
- Pringle A, Baker DM, Platt JL, Wares JP, Latgé JP, et al. (2005) Cryptic speciation in the cosmopolitan and clonal human pathogenic fungus *Aspergillus fumigatus*. Evolution 59: 1886.
- Rydholm C, Szakacs G, Lutzoni F (2006) Low genetic variation and no detectable population structure in *Aspergillus fumigatus* compared to closely related *Neosartorya* species. Eukaryotic cell 5: 650–657.
- O’Gorman CM, Fuller HT, Dyer PS (2009) Discovery of a sexual cycle in the opportunistic fungal pathogen *Aspergillus fumigatus*. Nature 457: 471–474.
- Selker E, Cambareri EB, Jensen BC, Haack K (1987) Rearrangement of duplicated DNA in specialized cells of *Neurospora*. Cell 51: 741–752.
- Wik L, Karlsson M, Johannesson H (2008) The evolutionary trajectory of the mating-type (mat) genes in *Neurospora* relates to reproductive behavior of taxa. BMC Evolutionary Biology 8.
- Pitt JI, Hocking AD (2009) Fungi and Food Spoilage. New York: Springer.
- Samson RA (2000) Introduction to food-and airborne fungi. Centraalbureau voor Schimmelcultures, editor.
- Ropars J, Cruaud C, Lacoste S, Dupont J (2012) A taxonomic and ecological overview of cheese fungi. International Journal of Food Microbiology 155: 199–210.
- Agreste (2009) Enquête Annuelle Laitière: Production nationale de l’industrie laitière en 2009.
- Barraclough T, Birky JR C, Burt A (2003) Diversification in sexual and asexual organisms. Evolution 57: 2166–2172.
- Samson RA, Seifert KA, Kuijpers AFA, Houbraken JAMP, Frisvad JC (2004) Phylogenetic analysis of *Penicillium* subgenus *Penicillium* using partial β -tubulin sequences. Studies in Mycology 49: 175–200.
- Houbraken J, Frisvad JC, Samson RA (2010) Sex in *Penicillium* series Roqueforti. IMA Fungus 1: 171–180.
- Dyer PS, O’Gorman CM (2011) A fungal sexual revolution: *Aspergillus* and *Penicillium* show the way. Current Opinion in Microbiology 14: 649–654.
- Glass N, Donaldson G (1995) Development of primer sets designed for use with the PCR to amplify conserved genes from filamentous ascomycetes. Applied and Environmental Microbiology 61: 1323–1330.
- Van den Berg M, Albarg R, Albermann K, Badger JH, Daran J-M, et al. (2008) Genome sequencing and analysis of the filamentous fungus *Penicillium chrysogenum*. Nature Biotechnology 26: 1161–1168.
- Pöggeler S, O’Gorman CM, Hoff B, Kück U (2011) Molecular organization of the mating-type loci in the homothallic Ascomycete *Eupenicillium crustaceum*. Fungal Biology 115: 615–624.
- Giraud F, Giraud T, Aguilera G, Fournier E, Samson RA, et al. (2010) Microsatellite loci to recognize species for the cheese starter and contaminating strains associated with cheese manufacturing. International Journal of Food Microbiology 137: 204–213.
- Borkovich KA, Alex LA, Yarden O, Freitag M, Turner GE, et al. (2004) Lessons from the genome sequence of *Neurospora crassa*: tracing the path from genomic blueprint to multicellular organism. Microbiology and Molecular Biology Reviews 68: 1–108.
- Houbraken J, Frisvad JC, Samson RA (2011) Fleming’s penicillin producing strain is not *Penicillium chrysogenum* but *P. rubens*. IMA Fungus 2: 87–95.
- Thompson JD, Gibson TJ, Higgins DG (2002) Multiple Sequence Alignment Using ClustalW and ClustalX. Current Protocols in Bioinformatics. John Wiley & Sons, Inc.
- Hane JK, Oliver RP (2008) RIPCAL: a tool for alignment-based analysis of repeat-induced point mutations in fungal genomic sequences. BMC Bioinformatics 9: 478.
- Aguilera G, Giraud T (2012) Codon models applied to the study of fungal genomes. In: Cannarozzi G, Schneider A, editors. Codon evolution - Mechanisms and models. New York: Oxford University Press, New York.
- Yang Z, dos Reis M (2011) Statistical properties of the branch-site test of positive selection. Molecular Biology and Evolution 28: 1217–1228.

42. Yang Z, Nielsen R (2002) Codon-substitution models for detecting molecular adaptation at individual sites along specific lineages. *Molecular Biology and Evolution* 19: 908–917.
43. Suyama M, Torrents D, Bork P (2006) PAL2NAL: robust conversion of protein sequence alignments into the corresponding codon alignments. *Nucleic Acids Research* 34: W609–12.
44. Katoh K, Kuma K, Toh H, Miyata T (2005) MAFFT version 5: improvement in accuracy of multiple sequence alignment. *Nucleic Acids Research* 33: 511–518.
45. Stern A, Doron-Faigenboim A, Erez E, Martz E, Bacharach E, et al. (2007) Selecton 2007: advanced models for detecting positive and purifying selection using a Bayesian inference approach. *Nucleic Acids Research* 35: W506–11.
46. Doron-Faigenboim A, Stern A, Mayrose I, Bacharach E, Pupko T (2005) Selecton: a server for detecting evolutionary forces at a single amino-acid site. *Bioinformatics* 21: 2101–2103.
47. Wong WSW, Nielsen R (2004) Detecting selection in noncoding regions of nucleotide sequences. *Genetics* 167: 949–958.
48. Swanson WJ, Nielsen R, Yang Q (2003) Pervasive adaptive evolution in mammalian fertilization proteins. *Molecular Biology and Evolution* 20: 18–20.
49. Hoff B, Pöggeler S, Kück U (2008) Eighty years after its discovery, Fleming's *Penicillium* strain discloses the secret of its sex. *Eukaryotic Cell* 7: 465–470.
50. Ramesh MA, Malik S, Logsdon JM (2005) A phylogenomic inventory of meiotic genes: evidence for sex in *Giardia* and an early eukaryotic origin of meiosis. *Current Biology* 15: 185–191.
51. Guindon S, Dufayard J-F, Lefort V, Anisimova M, Hordijk W, et al. (2010) New algorithms and methods to estimate maximum-likelihood phylogenies: assessing the performance of PhyML 3.0. *Systematic Biology* 59: 307–321.
52. Gouy M, Guindon S, Gascuel O (2010) SeaView version 4: A multiplatform graphical user interface for sequence alignment and phylogenetic tree building. *Molecular Biology and Evolution* 27: 221–224.
53. Raymond M, Rousset F (1995) GENEPOP (version 1.2): Population genetics software for exact tests and ecumenicism. *The Journal of Heredity* 86: 248–249.
54. Rousset F (2008) GENEPOP'007: a complete re-implementation of the genepop software for Windows and Linux. *Molecular Ecology Resources* 8: 103–106.
55. Lee SC, Ni M, Li W, Shertz C, Heitman J (2010) The evolution of sex: a perspective from the fungal kingdom. *Microbiology and Molecular Biology Reviews* 74: 298–340.
56. Koufopanou V, Burt A, Taylor JW (1997) Concordance of gene genealogies reveals reproductive isolation in the pathogenic fungus *Coccidioides immitis*. *Proceedings of the National Academy of Sciences of the USA* 94: 5478–5482.
57. Fisher M (2007) The Evolutionary Implications of an asexual lifestyle manifested by *Penicillium marneffii*. In: Heitman J, Kronstad J, Taylor JW, Casselton LA, editors. *Sex in Fungi: molecular determination and evolutionary implications*. Washington, DC: ASM Press. 201–212.
58. Henk DA, Shahar-Golan R, Devi KR, Boyce KJ, Zhan N, et al. (n.d.) Clonality despite sex; the evolution of host-associated sexual neighborhoods in the pathogenic fungus *Penicillium marneffii*. *PLoS Pathogens*.
59. Linde CC, Zala M, Ceccarelli S, McDonald BA (2003) Further evidence for sexual reproduction in *Rhynchosporium secalis* based on distribution and frequency of mating-type alleles. *Fungal Genetics and Biology* 40: 115–125.
60. Barve MP, Arie T, Salimath SS, Muehlbauer FJ, Peever TL (2003) Cloning and characterization of the mating type (MAT) locus from *Ascochyta rabiei* (teleomorph: *Didymella rabiei*) and a MAT phylogeny of legume-associated *Ascochyta* spp. *Fungal Genetics and Biology* 39: 151–167.
61. Milgroom M (1996) Recombination and the multilocus structure of fungal populations. *Annual Review of Phytopathology* 34: 457–477.
62. Dyer PS, O'Gorman CM (2011) Sexual development and cryptic sexuality in fungi: insights from *Aspergillus* species. *FEMS Microbiology Reviews* 36: 165–192.
63. Sommerhalder R, McDonald B, Zhan J (2006) The frequencies and spatial distribution of mating types in *Stagonospora nodorum* are consistent with recurring sexual reproduction. *Phytopathology* 96: 234–239.
64. Paoletti M, Rydholm C, Schwier EU, Anderson MJ, Szakacs G, et al. (2005) Evidence for sexuality in the opportunistic fungal pathogen *Aspergillus fumigatus*. *Current Biology* 15: 1242–1248.
65. Lengeler KB, Wang P, Cox GM, Perfect JR, Heitman J (2000) Identification of the MATa mating-type locus of *Cryptococcus neoformans* reveals a serotype A MATa strain thought to have been extinct. *Proceedings of the National Academy of Sciences of the USA* 97: 14455–14460.
66. Kwon-Chung KJ, Edman J, Wickes BL (1992) Genetic association of mating types and virulence in *Cryptococcus neoformans*. *Infection and Immunity* 60: 602–605.
67. Malik S-B, Pightling AW, Stefaniak LM, Schurko AM, Logsdon JM (2008) An expanded inventory of conserved meiotic genes provides evidence for sex in *Trichomonas vaginalis*. *PLoS One* 3: e2879.
68. Galagan JE, Selker EU (2004) RIP: the evolutionary cost of genome defense. *Trends in Genetics* 20: 417–423.
69. Clutterbuck AJ (2004) MATE transposable elements in *Aspergillus nidulans*: evidence of repeat-induced point mutation. *Fungal Genetics and Biology* 41: 308–316.
70. Selker E, Garrett P (1988) DNA sequence duplications trigger gene inactivation in *Neurospora crassa*. *Proceedings of the National Academy of Science of the USA* 85: 6870–6874.
71. Cambareri EB, Jensen BC, Schabach E, Selker EU (1989) Repeat-induced G-C to A-T mutations in *Neurospora*. *Science* 244: 1571–1575.
72. Cambareri EB, Singer MJ, Selker EU (1991) Recurrence of Repeat-Induced Point Mutation (RIP) in *Neurospora crassa*. *Genetics* 127: 699–710.
73. Graia F, Lespinet O, Rimbault B, Dequard-Chablat M, Coppin E, et al. (2001) Genome quality control: RIP (repeat-induced point mutation) comes to *Podospira*. *Molecular Microbiology* 40: 586–595.
74. Ikeda K, Nakayashiki H, Kataoka T, Tamba H, Hashimoto Y, et al. (2002) Repeat-induced point mutation (RIP) in *Magnaporthe grisea*: implications for its sexual cycle in the natural field context. *Molecular Microbiology* 45: 1355–1364.
75. Idnurm A, Howlett BJ (2003) Analysis of loss of pathogenicity mutants reveals that repeat-induced point mutations can occur in the Dothideomycete *Leptosphaeria maculans*. *Fungal Genetics and Biology* 39: 31–37.
76. Coleman JJ, Rounsley SD, Rodriguez-Carres M, Kuo A, Wasmann CC, et al. (2009) The genome of *Nectria haematococca*: contribution of supernumerary chromosomes to gene expansion. *PLoS Genetics* 5: e1000618.
77. Montiel MD, Lee H a, Archer DB (2006) Evidence of RIP (repeat-induced point mutation) in transposase sequences of *Aspergillus oryzae*. *Fungal Genetics and Biology* 43: 439–445.
78. Braumann I, van den Berg M, Kempken F (2008) Repeat induced point mutation in two asexual fungi, *Aspergillus niger* and *Penicillium chrysogenum*. *Current Genetics* 53: 287–297.
79. Galagan JE, Calvo SE, Cuomo C, Ma L-J, Wortman JR, et al. (2005) Sequencing of *Aspergillus nidulans* and comparative analysis with *A. fumigatus* and *A. oryzae*. *Nature* 438: 1105–1115.
80. Martin F, Kohler A, Murat C, Balestrini R, Coutinho PM, et al. (2010) Périgord black truffle genome uncovers evolutionary origins and mechanisms of symbiosis. *Nature* 464: 1033–1038.
81. Hood ME, Katawczik M, Giraud T (2005) Repeat-induced point mutation and the population structure of transposable elements in *Microbotryum violaceum*. *Genetics* 170: 1081–1089.
82. Horns F, Petit E, Yockteng R, Hood ME (2012) Patterns of Repeat-Induced Point Mutation in transposable elements of Basidiomycete Fungi. *Genome Biology and Evolution* 4: 240–247.
83. Crouch JA, Glasheen BM, Giunta MA, Clarke BB, Hillman BI (2008) The evolution of transposon repeat-induced point mutation in the genome of *Colletotrichum cereale*: reconciling sex, recombination and homoplasy in an asexual pathogen. *Fungal Genetics and Biology* 45: 190–206.
84. Neafsey DE, Barker BM, Sharpton TJ, Stajich JE, Park DJ, et al. (2010) Population genomic sequencing of *Coccidioides* fungi reveals recent hybridization and transposon control. *Genome Research* 20: 938–946.