

# SUPPLEMENTARY MATERIAL

Supplement to “Global, regional, and national burden of heart failure and its underlying causes, 1990–2021: results from the Global Burden of Disease Study 2021”

## CONTENTS

SUPPLEMENTARY MATERIAL .....	1
Figure S1 .....	2
Figure S2 .....	3
Figure S3 .....	4
Figure S4 .....	5
Figure S5 .....	6
Figure S6 .....	7
Figure S7 .....	8
Figure S8 .....	9
Figure S9 .....	10
Figure S10 .....	11
Figure S11 .....	12
Table S1 .....	13
Table S2 .....	16

**Figure S1**

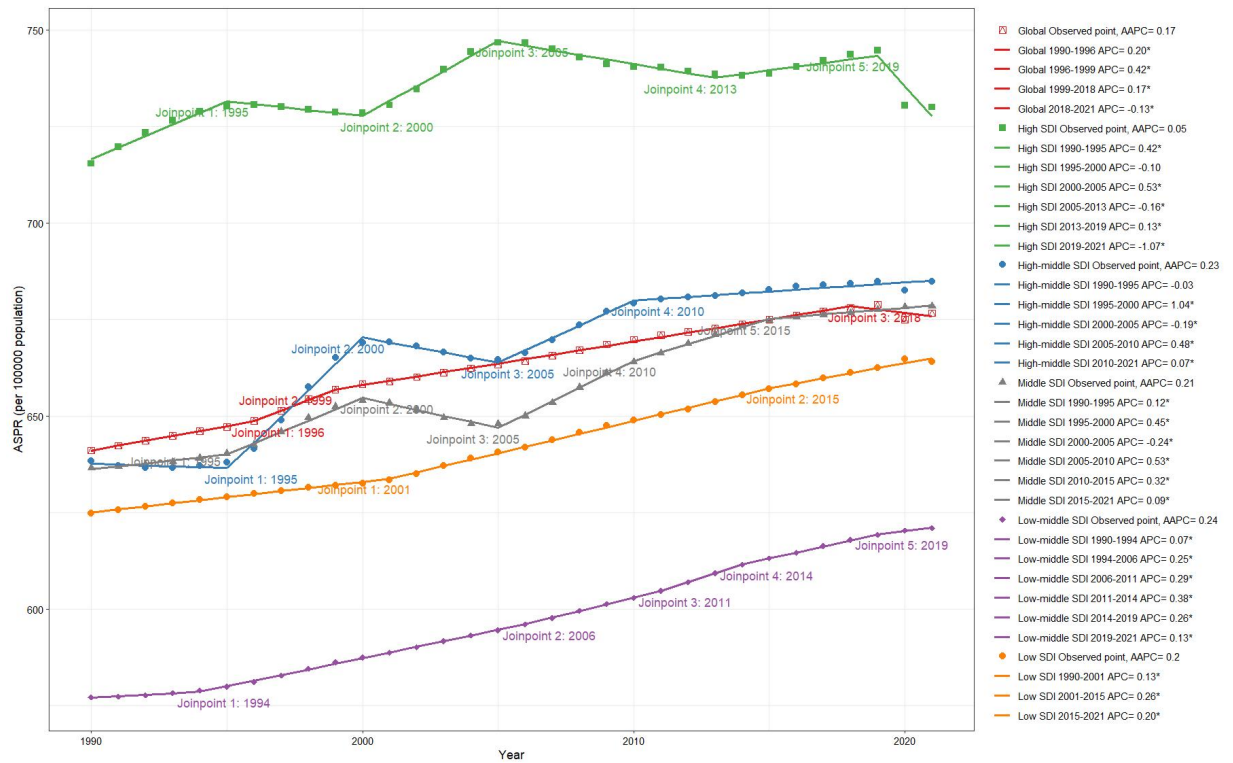


Figure S1: Temporal Trends in ASPR of HF by SDI Regions: A Joinpoint Regression Analysis, 1990-2021

Abbreviations: HF, heart failure; ASPR, age-standardized prevalence rate; SDI, socio-demographic index; APC, annual percent change; AAPC, average annual percent change. \*P<0.05.

**Figure S2**

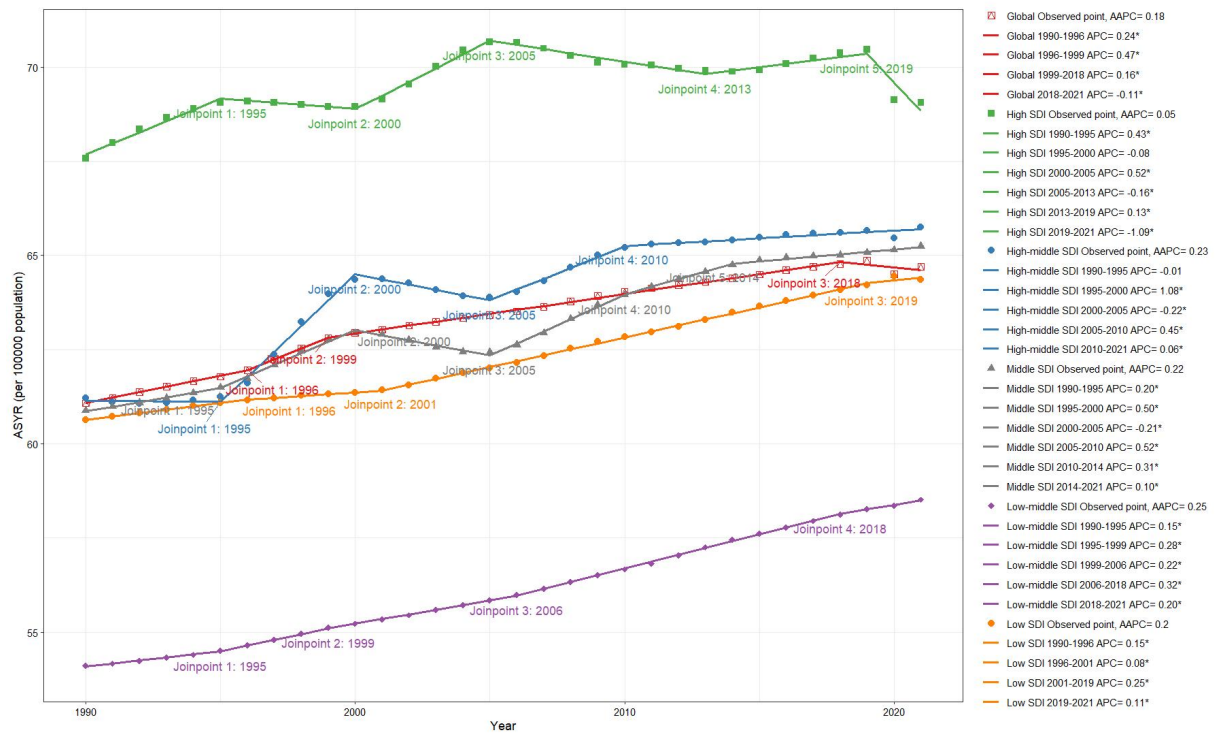
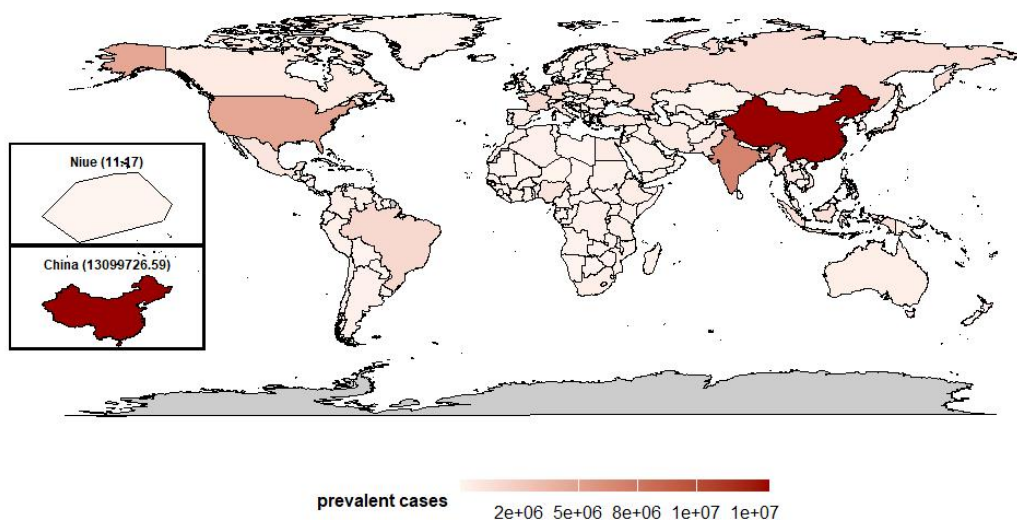


Figure S2: Temporal Trends in ASYR of HF by SDI Regions: A Joinpoint Regression Analysis, 1990-2021

Abbreviations: HF, heart failure; YLDs = years lived with disability; ASYR = age-standardized YLDs rate; SDI, socio-demographic index; APC, annual percent change; AAPC, average annual percent change. \*P<0.05.

**Figure S3**

**A**



**B**

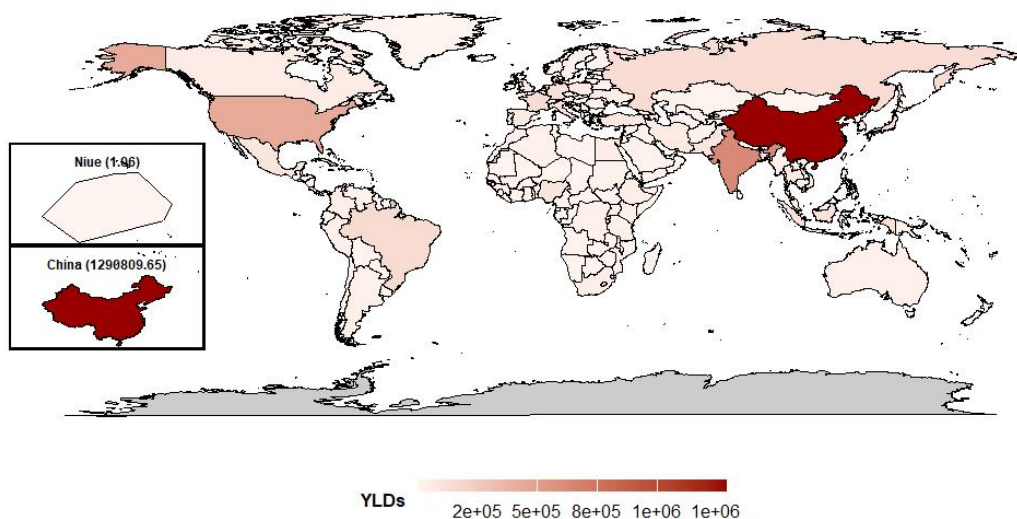


Figure S3: Geographic distributions of heart failure burdens across 204 countries and territories, for both sexes and all ages, 2021

(A) Prevalent cases of heart failure in 2021. Bottom-left small maps display the lowest (Niue) and highest (China) cases. (B) Years Lived with Disability (YLDs) of heart failure in 2021. Bottom-left small maps display the lowest (Niue) and highest (China) YLDs. Note: The legend uses scientific notation, where 'e' represents '10 to the power of'. For example, 2e+06 is equivalent to  $2 \times 10^6$  or 2,000,000.

**Figure S4**

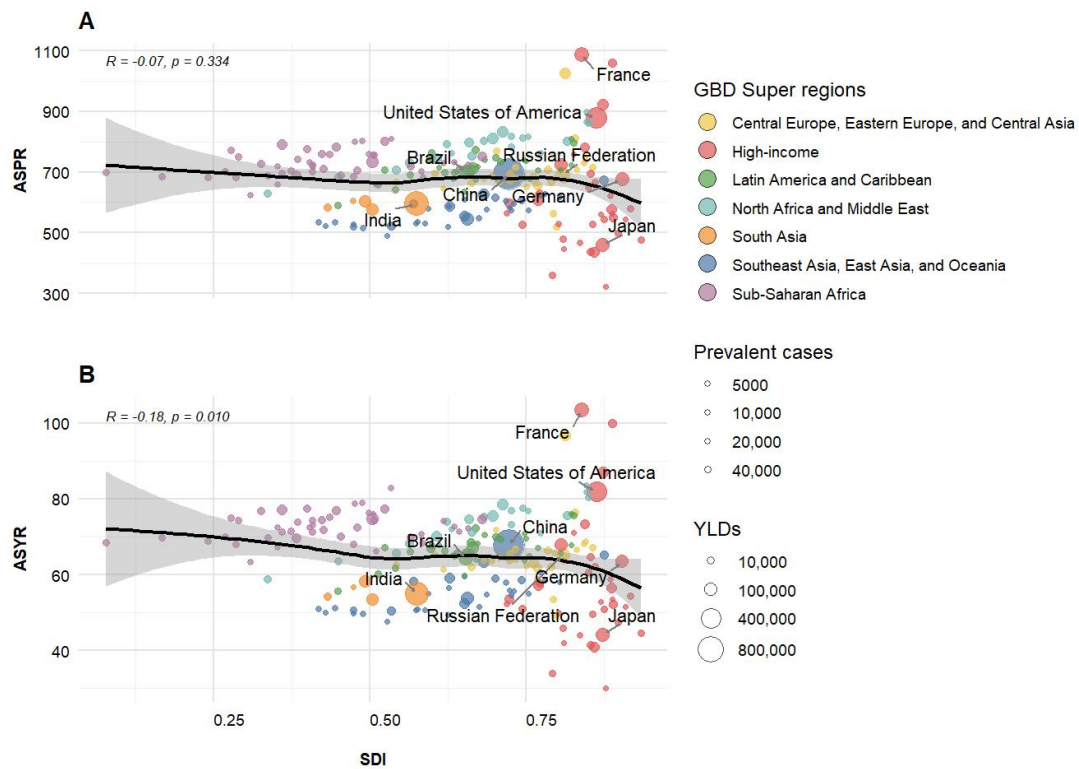


Figure S4: Burdens of heart failure in relation to SDI by 204 countries and territories, for both sexes, 2021

(A) ASPR of heart failure in relation to SDI. (B) ASYR of heart failure in relation to SDI. Note: Each point represents a country. Point size indicates absolute numbers of Prevalence or YLDs as per legend. Colors denote GBD super regions. Labeled countries represent those with the highest disease burden for each metric. Correlation statistics are based on Pearson's correlation test. Abbreviations: SDI = Socio-demographic Index; YLDs = Years Lived with Disability; ASYR = Age-standardized YLDs rate(per 100,000 population); ASPR = age-standardized Prevalence(per 100,000 population); GBD = Global Burden of Disease study.

**Figure S5**

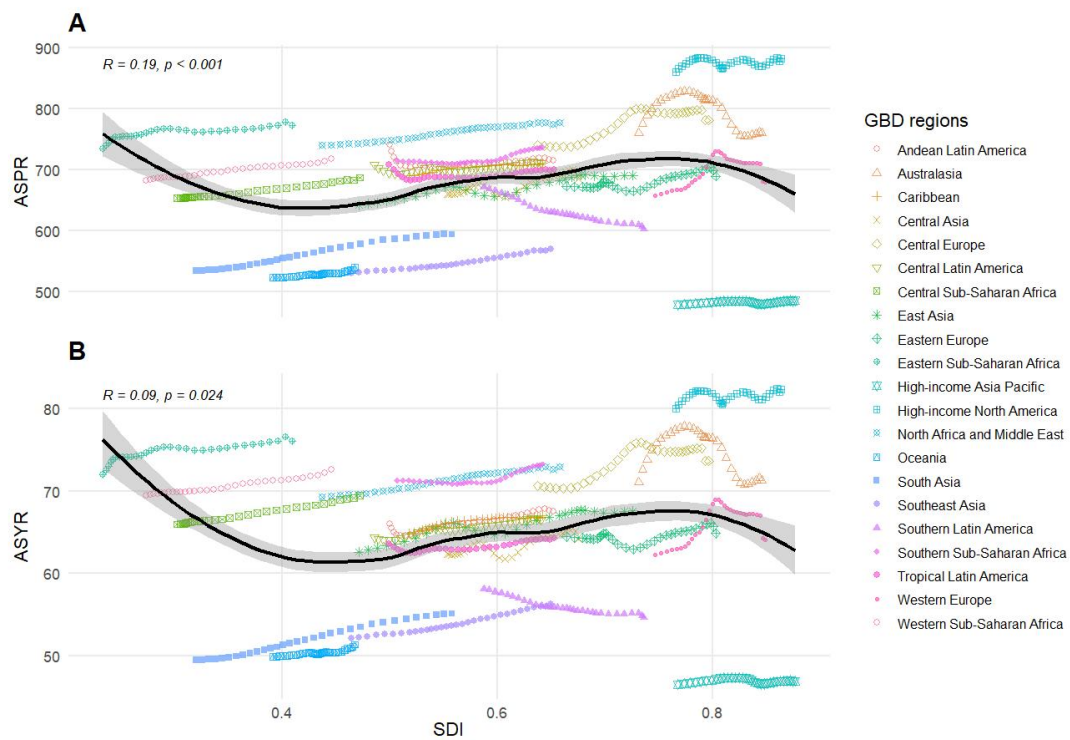


Figure S5: Burdens of heart failure in relation to SDI by 21 GBD regions, for both sexes, 2021

(A) ASPR of heart failure in relation to SDI. (B) ASYR of heart failure in relation to SDI. Note: Each point represents a region-year combination from 1990 to 2021. Colors/shapes denote different GBD regions as per the legend. Black lines represent the overall trend across all data points. R and p values indicate Pearson's correlation coefficients and their statistical significance, respectively. Abbreviations: SDI = Socio-demographic Index; ASPR = age-standardized Prevalence(per 100,000 population); YLDs = Years Lived with Disability; ASYR = age-standardized YLDs rate(per 100,000 population); GBD = Global Burden of Disease study.

**Figure S6**

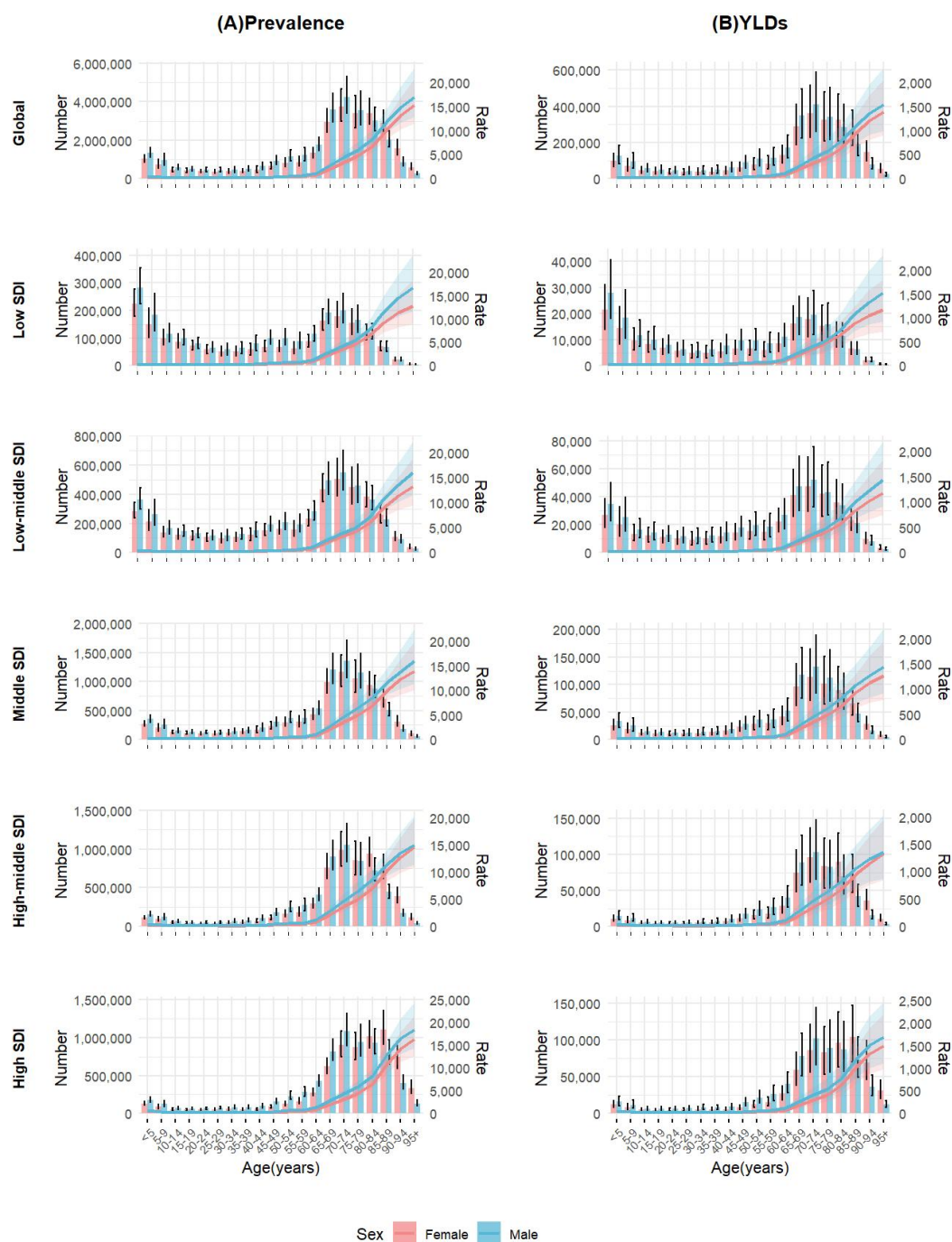


Figure S6: Global and Regional Trends of heart failure Burdens Across Age Groups by Sex, 2021

(A) prevalent cases and prevalence (per 100,000 population) of heart failure across different age groups by sex and SDI region. (B) YLDs and YLDs rate (per 100,000 population) of heart failure across different age groups by sex and SDI region. Note: Bars represent absolute numbers (left y-axis), while lines represent rates per 100,000 population (right y-axis). Vertical black lines indicate 95% uncertainty intervals. Each row represents a different SDI region, from top to bottom: Global, Low SDI, Low-middle SDI, Middle SDI, High-middle SDI, and High SDI. Abbreviations: YLDs = Years Lived with Disability; SDI = Socio-demographic Index.

**Figure S7**

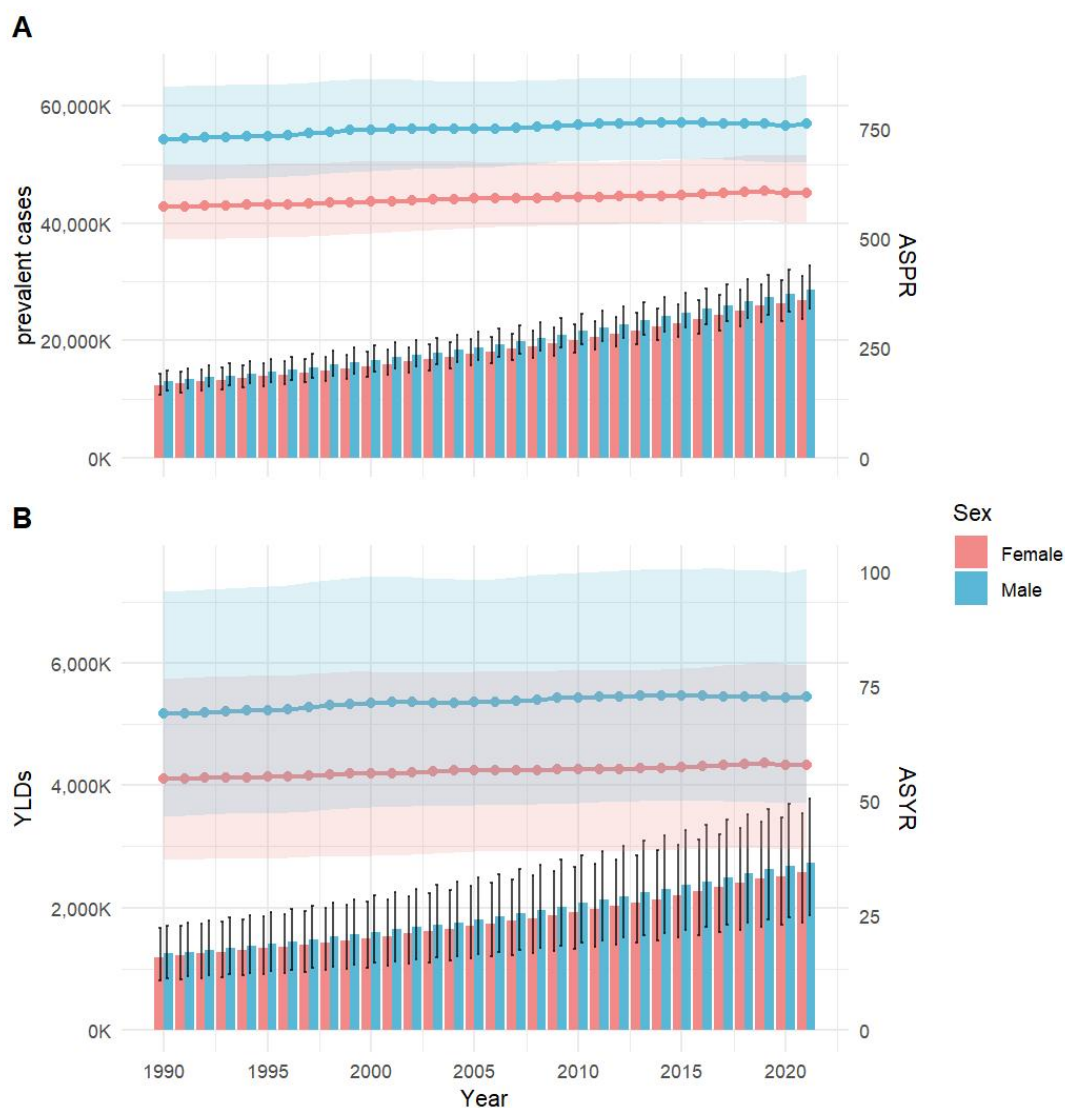


Figure S7: Global Trends of heart failure Burdens by Sex from 1990 to 2020

(A) prevalent cases and ASPR of heart failure by Sex from 1990 to 2020. (B) YLDs and ASYR of heart failure by Sex from 1990 to 2020. Note: Bars represent absolute numbers (left y-axis), while lines represent age-standardized rates per 100,000 population (right y-axis). Pink represents females, blue represents males. Vertical black lines indicate 95% uncertainty intervals. Abbreviations: ASPR = age-standardized Prevalence(per 100,000 population); YLDs = Years Lived with Disability; ASYR = Age-standardised YLDs rate(per 100,000 population).

**Figure S8**

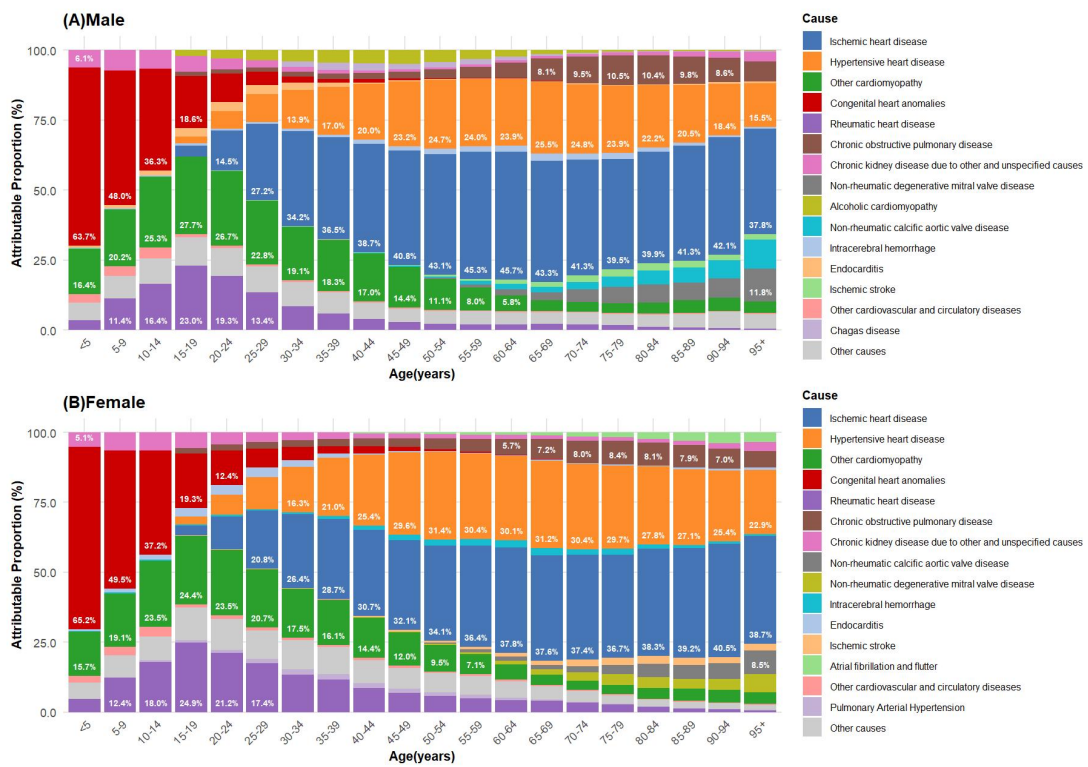


Figure S8: Proportion of heart failure prevalent cases attributable to major underlying causes by sex and age groups globally, 2021

**Figure S9**

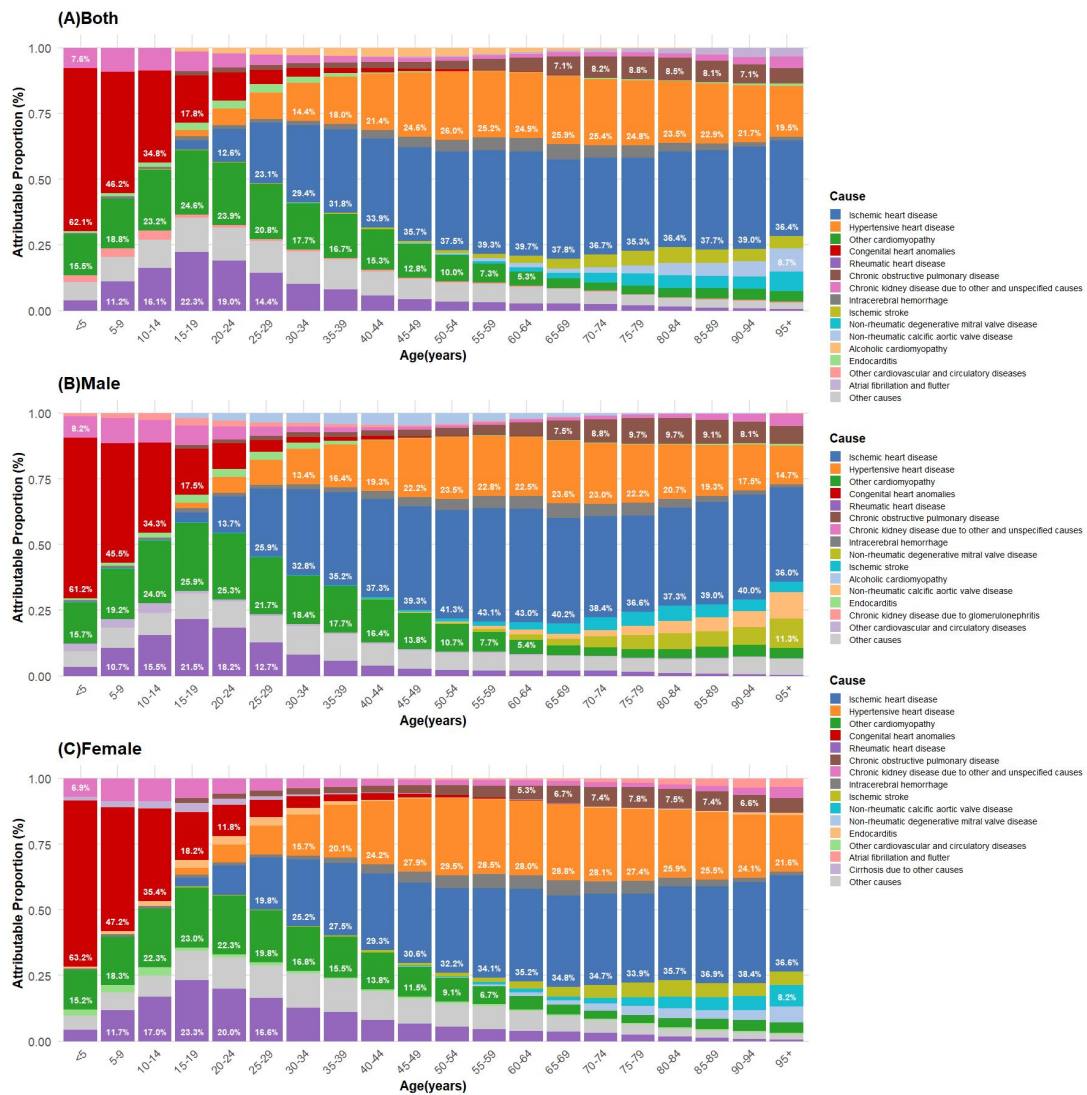


Figure S9: Proportion of YLDs attributable to major underlying causes by sex and age groups globally, 2021

Abbreviations: YLDs = years lived with disability

**Figure S10**

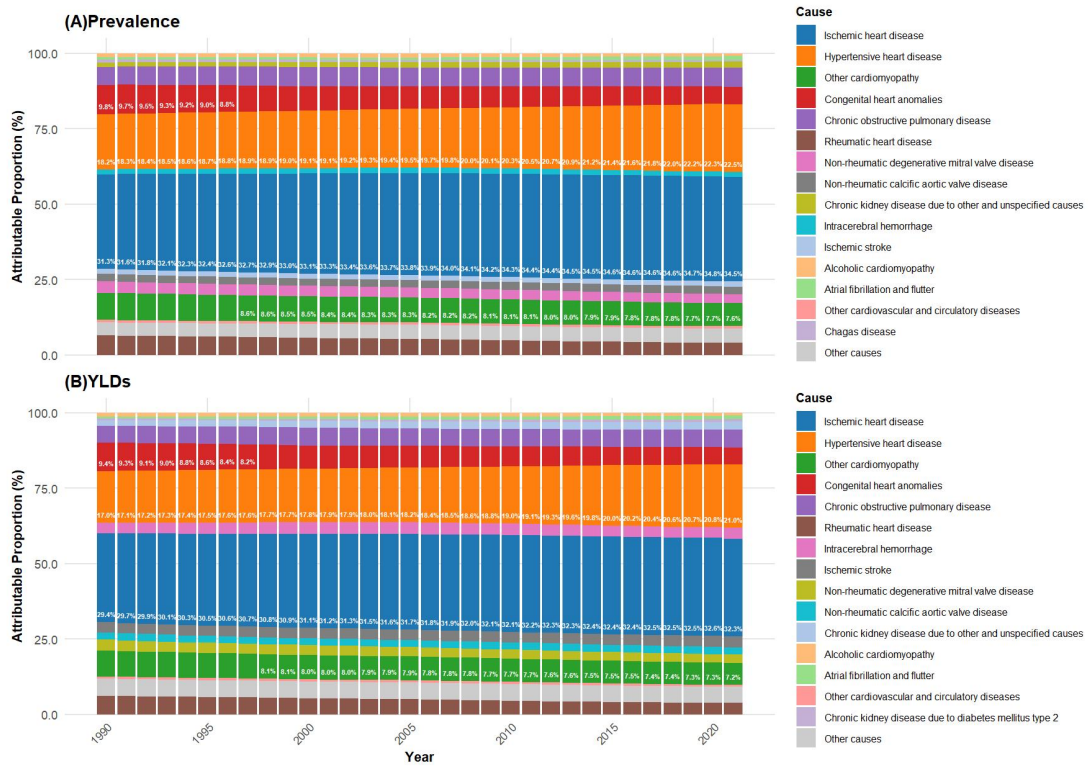


Figure S10: Proportion of heart failure burden attributable to major underlying causes from 1990 to 2020 globally, for both sexes and all ages

Abbreviations: YLDs = years lived with disability

**Figure S11**

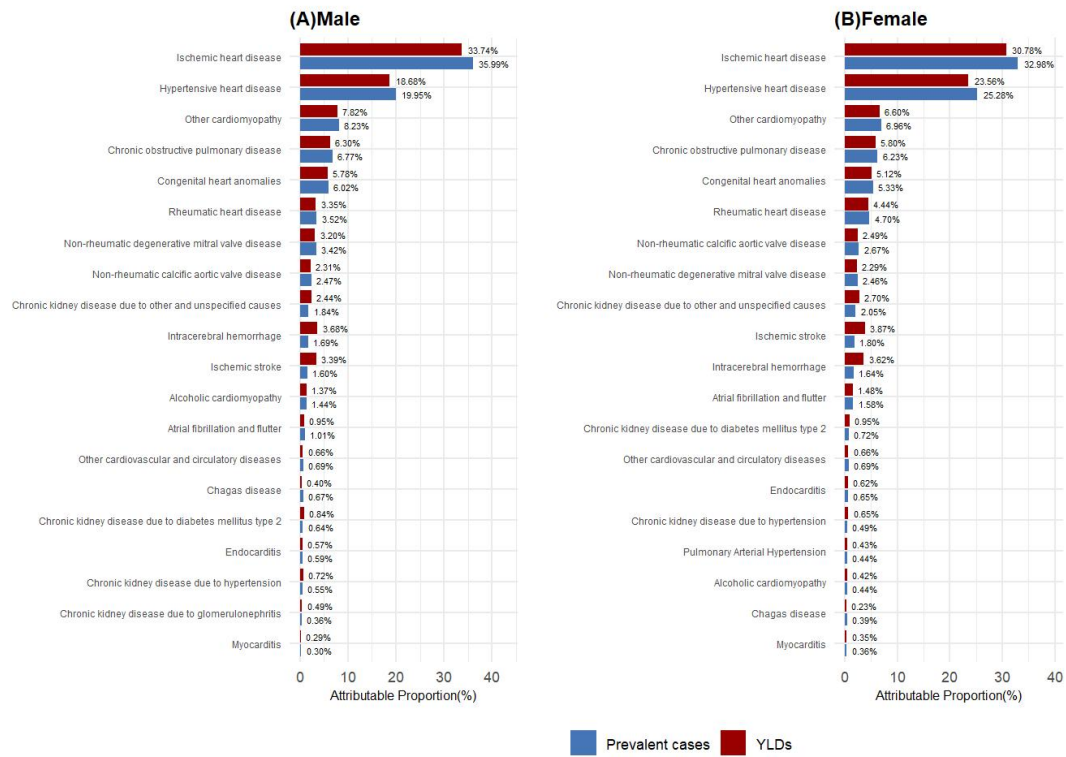


Figure S11: Proportion of heart failure prevalent cases and YLDs attributable to major underlying causes globally by Sex, for all ages, 2021

Abbreviations: YLDs = years lived with disability

# Table S1

Table S1 The prevalence burden of heart failure and its temporal trends by 204 countries and territories, for all ages and both sexes, 1990-2021

	Prevalent cases (95% UI)		ASPR (95% UI)		1990-2021 EAPC (95% CI) <sup>1</sup>
	1990	2021	1990	2021	
<b>Central Asia</b>					
Armenia	18745 (15788-22425)	30353 (25728-36285)	721.25 (591.42-875.25)	769.96 (660.84-902.72)	0.32 (0.26-0.39)
Azerbaijan	33107 (28173-39184)	58117 (49032-69397)	653.75 (542.28-796.41)	685.59 (577.86-828.31)	0.22 (0.18-0.27)
Georgia	40076 (33409-49617)	39968 (33017-49476)	707.12 (590.67-868.02)	714.52 (604.95-864.68)	0.08 (0.03-0.12)
Kazakhstan	80992 (68476-97428)	111376 (94373-134020)	656.78 (545.46-809.9)	694.78 (583.37-840.29)	0.29 (0.24-0.34)
Kyrgyzstan	21626 (18536-25954)	32592 (27674-38597)	675.87 (560.92-839.34)	697.19 (581.54-843.99)	0.16 (0.12-0.2)
Mongolia	7864 (6744-9261)	13717 (11706-16203)	620.9 (518.98-769.35)	645.43 (542.86-787)	0.22 (0.17-0.26)
Tajikistan	21361 (18161-25114)	39081 (33588-45518)	649.9 (532.35-793.54)	666.05 (557.13-818.61)	0.13 (0.08-0.17)
Turkmenistan	14365 (12205-16691)	25147 (21554-29559)	658.47 (541.16-806.95)	676.78 (569.83-817.86)	0.15 (0.11-0.19)
Uzbekistan	87985 (75680-103040)	159100 (135661-187256)	638.54 (530.28-794.02)	663.55 (553.96-813.78)	0.18 (0.14-0.23)
<b>Central Europe</b>					
Albania	14673 (12563-17081)	25637 (21009-31996)	656.48 (546.82-788.62)	664.37 (560.89-803.71)	0.08 (0.06-0.1)
Bosnia and Herzegovina	23884 (20061-28363)	35558 (28957-43739)	662.67 (557.54-797.95)	671.69 (566.32-798.24)	0.1 (0.07-0.12)
Bulgaria	64422 (52440-80347)	79115 (63645-100092)	628.37 (528.4-759.35)	626.81 (532.01-763.07)	-0.01 (-0.02-0)
Croatia	29471 (24337-35791)	39737 (33529-48151)	575.06 (479.94-691.85)	519.54 (448.92-606.08)	-0.57 (-0.76-0.37)
Czechia	98151 (79520-122021)	155040 (125751-192217)	789.03 (649.05-952.24)	809.05 (685.65-975.53)	0.6 (0.34-0.86)
Hungary	83611 (68986-103301)	115490 (93759-142400)	649.04 (547.38-776)	665.07 (566.96-787.8)	0.07 (0.06-0.08)
Montenegro	3980 (3336-4822)	5609 (4556-6940)	681.56 (571.57-829.29)	677.95 (569.52-812.42)	0.02 (0-0.04)
North Macedonia	10997 (9280-13067)	17398 (14001-21769)	637.74 (536.69-764.67)	648.95 (549.07-783.89)	0.08 (0.07-0.09)
Poland	374933 (328504-431527)	673613 (624552-730848)	934.6 (823.47-1064.87)	1025.57 (957.48-1100.75)	0.34 (0.24-0.45)
Romania	157222 (129858-192923)	220940 (180713-275453)	644.02 (539.93-784.05)	655.53 (557.85-788.18)	0.34 (0.23-0.46)
Serbia	51374 (42972-62315)	81228 (66552-100851)	547.29 (461.39-666.58)	563.85 (477.16-670.58)	-0.38 (-0.58-0.18)
Slovakia	37028 (30917-44965)	55371 (45201-69117)	664.7 (563.96-803.22)	673.39 (567.7-809.78)	0.56 (0.39-0.72)
Slovenia	15623 (12835-19161)	28668 (23874-35778)	702.38 (586.56-846.49)	727.67 (623.7-871.85)	0.18 (0.16-0.21)
<b>Eastern Europe</b>					
Belarus	80043 (65044-97268)	98771 (80936-121649)	686.68 (565.86-827)	707.58 (593.36-845.92)	0.18 (0.13-0.22)
Estonia	13195 (10902-16192)	18476 (15227-23098)	709.77 (598.81-855.78)	738.48 (622.99-895.78)	0.21 (0.18-0.24)
Latvia	22555 (18323-28597)	25909 (21142-32064)	694.56 (573.75-853.92)	707.93 (604.75-841.19)	0.13 (0.09-0.16)
Lithuania	29609 (24231-36518)	37798 (30537-47062)	707.18 (588.64-862.2)	715.1 (602.41-857.38)	0.08 (0.05-0.11)
Republic of Moldova	26084 (21641-31519)	35392 (29276-43583)	659.36 (545.73-798.32)	680.69 (584.91-816.33)	0.16 (0.12-0.2)
Russian Federation	1048726 (915634-1211154)	1449979 (1264512-1692548)	665.37 (584.67-758.06)	690.56 (611.84-790.29)	0.19 (0.15-0.23)
Ukraine	428151 (365900-503617)	458711 (395172-543139)	686.59 (599.55-792.24)	679.75 (596.33-782.71)	0.03 (0-0.07)
<b>Australasia</b>					
Australia	144777 (121150-178152)	329434 (284109-388434)	780.58 (661.66-950)	781.35 (684.72-905.11)	-0.21 (-0.35-0.08)
New Zealand	24686 (21086-29276)	49448 (43716-57133)	659.62 (568.98-773.52)	648.97 (577.88-735)	-0.2 (-0.29-0.11)
<b>High-income Asia Pacific</b>					
Brunei Darussalam	686 (598-782)	1439 (1237-1685)	439.6 (374.37-519.2)	446.83 (384.65-525.32)	0.04 (0.03-0.05)
Japan	666093 (584110-768886)	1404841 (1246526-1601283)	472.61 (419.41-535.48)	459.77 (422.32-503.18)	-0.13 (-0.15-0.1)
Republic of Korea	151903 (130701-175362)	433738 (372555-505417)	512.85 (439.07-601.37)	576.44 (507.02-657.16)	0.44 (0.32-0.57)
Singapore	11083 (9611-12734)	37719 (32117-45001)	508.09 (433.41-589.72)	529.3 (460.36-616.31)	0.14 (0.13-0.14)
<b>High-income North America</b>					
Canada	273024 (232426-322633)	593733 (485413-721562)	887.88 (762.35-1038.35)	922.09 (779-1093.16)	0.14 (0.03-0.25)
Greenland	249 (214-290)	417 (348-501)	737.66 (610.22-873.27)	757.37 (644.08-901.24)	0.12 (0.11-0.14)
United States of America	2605839 (2302375-2996268)	4616875 (4290102-4976907)	857.89 (764.58-973.38)	877.27 (820.75-942.99)	-0.01 (-0.04-0.02)
<b>Southern Latin America</b>					
Argentina	215098 (183457-254926)	315729 (267550-373641)	683.09 (586.4-809.52)	595.06 (510.57-699.1)	-0.42 (-0.45-0.39)
Chile	70434 (60047-81923)	146798 (124044-174737)	667.46 (565.91-787.95)	629.29 (538.46-736.29)	-0.12 (-0.15-0.09)
Uruguay	20854 (17564-24979)	29305 (24346-35189)	573.34 (488.97-675.25)	564.22 (483.49-658.69)	-0.04 (-0.05-0.03)
<b>Western Europe</b>					
Andorra	279 (230-338)	757 (617-927)	556.32 (465.09-669.55)	561.35 (475.71-665.2)	0 (-0.02-0.01)
Austria	105813 (87985-119972)	121624 (104383-137200)	933.17 (797.82-1042.92)	694.44 (615.37-768.17)	-1.3 (-1.44-1.16)
Belgium	66932 (54722-83237)	91808 (81989-108223)	485.42 (410.52-583.73)	435.4 (392-499.63)	0.01 (-0.1-0.11)
Cyprus	3219 (2665-3897)	8411 (6891-10315)	439.42 (371-525.02)	465.59 (394.39-554.11)	-0.28 (-0.45-0.1)
Denmark	33608 (27708-41231)	53563 (43756-66672)	458.9 (388.68-547.76)	498.93 (421.36-599.93)	0.4 (0.17-0.62)
Finland	41944 (34533-50065)	78820 (62803-97021)	651.76 (551.43-761.37)	667.2 (560.12-788.78)	0.12 (-0.09-0.33)
France	832153 (681311-1027886)	1505424 (1234606-1840699)	1052.24 (881.14-1271.73)	1085.7 (920.21-1284.19)	0.01 (-0.11-0.14)
Germany	729402 (601508-891774)	1219790 (989142-1489906)	642.98 (542.98-761.84)	675.91 (574.85-799.7)	0.97 (0.68-1.25)
Greece	59375 (48597-72678)	75336 (64320-89209)	449.03 (376.8-532.01)	359.14 (318.53-409.36)	-1.18 (-1.35-1)
Iceland	899 (751-1070)	1678 (1374-2048)	320.44 (268.75-376.57)	322.43 (273.53-384.22)	-0.17 (-0.35-0.01)
Ireland	20258 (16786-24448)	39074 (32348-47555)	519.55 (435.56-618.43)	543.48 (460.97-649.95)	0.15 (0.15-0.16)
Israel	21937 (18257-26503)	58945 (49094-71446)	453.13 (378.74-547.68)	478.23 (403.68-569.75)	0.13 (0.06-0.21)
Italy	549809 (479260-636523)	1015901 (916641-1137019)	703.57 (624.26-797.33)	723.4 (661.02-796.44)	0.25 (0.01-0.5)
Luxembourg	2868 (2367-3541)	5955 (4903-7290)	595.9 (500.71-715.41)	619.03 (526.62-745.52)	-0.1 (-0.45-0.26)
Malta	1984 (1650-2429)	4679 (3795-5782)	515.43 (432.09-623.24)	529.11 (450.23-627.36)	0.55 (0.38-0.73)
Monaco	334 (268-416)	480 (384-597)	531.01 (447.43-638.45)	543.17 (466.55-643.76)	0.05 (0.05-0.06)
Netherlands	93206 (79296-111830)	172714 (138771-211000)	502.65 (435.33-589.98)	548.9 (458.01-645.03)	0.18 (0.08-0.28)
Norway	36089 (31619-41846)	53116 (46224-61799)	565.52 (500.98-640.31)	580.53 (519.04-661.13)	0.1 (0.09-0.11)
Portugal	59923 (48947-73957)	119946 (97771-147918)	490.95 (413.34-589.19)	523.97 (446.43-624.87)	0.07 (0.01-0.13)
San Marino	180 (147-224)	404 (329-507)	557 (469.33-673.49)	562.49 (476.55-682.09)	0 (-0.01-0.02)
Spain	265377 (213848-329168)	558756 (503070-612934)	538.55 (448.49-648.26)	607.61 (549.73-664.94)	0.07 (-0.03-0.18)
Sweden	136679 (118569-159093)	219066 (187827-258314)	1026.82 (910.64-1160.91)	1060.21 (936.14-1219.74)	-0.01 (-0.09-0.07)
Switzerland	44620 (36248-55017)	79865 (65124-98653)	464.47 (388.13-556.71)	477.03 (404.96-569.62)	0.38 (0.1-0.67)
United Kingdom	359495 (308145-427729)	500717 (435455-583119)	436.63 (379.96-504.56)	436.47 (389.38-493.55)	-0.17 (-0.22-0.11)

TableS1(continued)

<b>Andean Latin America</b>					
Bolivia (Plurinational State of)	37109 (30096-46423)	70160 (59358-83240)	1005.64 (798.12-1265.05)	765.32 (645.99-910.43)	-0.65 (-0.75-0.56)
Ecuador	44408 (38044-51050)	113899 (96850-135561)	709.13 (597.52-843.1)	697.09 (590.96-837.76)	0.04 (0-0.08)
Peru	95222 (82643-109062)	239199 (201461-282341)	685.07 (582.4-811.74)	709.27 (594.37-843.34)	0.19 (0.17-0.21)
<b>Caribbean</b>					
Antigua and Barbuda	427 (353-508)	679 (561-826)	726.07 (600.58-858.23)	735.66 (619.48-882.51)	-0.02 (-0.06-0.02)
Bahamas	1141 (974-1340)	2489 (2081-3013)	669.69 (560.46-795.89)	706.84 (594.65-854.22)	0.17 (0.16-0.18)
Barbados	2077 (1708-2580)	3347 (2770-4132)	695.99 (585.12-842.04)	740.14 (630.35-888.58)	0.18 (0.17-0.19)
Belize	829 (715-966)	2145 (1832-2506)	681.47 (575.17-825.67)	715.1 (601.56-862.19)	0.15 (0.15-0.16)
Bermuda	428 (353-515)	976 (791-1204)	744.64 (620.23-887.56)	810.64 (685.09-968.67)	0.27 (0.25-0.29)
Cuba	75035 (61777-91803)	134801 (109120-163808)	740.05 (611.44-900.81)	771.68 (646.94-917.03)	0.14 (0.13-0.14)
Dominica	417 (351-502)	502 (419-606)	647.36 (539.53-783.75)	678.97 (576.65-813.53)	0.13 (0.12-0.14)
Dominican Republic	28969 (24874-33588)	69361 (58703-83822)	672.92 (559.09-805.23)	699.6 (589.97-850.3)	0.1 (0.08-0.13)
Grenada	540 (451-653)	670 (562-817)	638.28 (530.27-774.47)	673.77 (574.41-813.19)	0.12 (0.1-0.14)
Guyana	2754 (2345-3222)	3759 (3184-4514)	604.25 (501.21-745.26)	633.41 (529.89-764.58)	0.13 (0.12-0.14)
Haiti	19302 (16184-22634)	42722 (36545-50129)	553.16 (449.37-681.45)	589.28 (493.53-716)	0.2 (0.18-0.21)
Jamaica	14536 (12353-17474)	22420 (18681-27512)	710.74 (596.82-861.74)	740.26 (622.43-899.43)	0.08 (0.05-0.12)
Puerto Rico	26885 (22119-32340)	54095 (43986-67695)	749.51 (622.33-893.5)	795.44 (666.26-962.81)	0.2 (0.19-0.21)
Saint Kitts and Nevis	253 (210-314)	375 (312-452)	625.8 (522.46-770.65)	677.48 (571.26-808.86)	0.25 (0.23-0.27)
Saint Lucia	684 (574-810)	1519 (1269-1852)	671.1 (566.58-804.57)	716.73 (606.05-861.36)	0.2 (0.19-0.22)
Saint Vincent and the Grenadines	542 (456-644)	900 (739-1096)	655.47 (540.81-795.79)	701 (586.54-843.08)	0.21 (0.2-0.21)
Suriname	1778 (1499-2083)	3915 (3271-4701)	657.38 (545.55-789.73)	677.08 (569.47-815.55)	0.08 (0.07-0.09)
Trinidad and Tobago	6072 (5109-7199)	12129 (9932-14708)	666.94 (556.41-808.86)	705.6 (587.67-842.52)	0.19 (0.18-0.2)
United States Virgin Islands	551 (461-654)	1165 (945-1459)	680.29 (569.46-821.53)	724.2 (614.06-867.03)	0.17 (0.16-0.18)
<b>Central Latin America</b>					
Colombia	135194 (116775-155292)	375912 (315705-457086)	671.91 (563.74-803.2)	706.42 (598.72-853.71)	0.19 (0.18-0.2)
Costa Rica	15564 (13454-17943)	38732 (32509-46528)	741.29 (629.6-878.04)	747.41 (632.96-887.34)	0.07 (0.06-0.09)
El Salvador	24134 (20882-27738)	45087 (37828-54705)	681.01 (577.14-807.43)	691.73 (578.98-839.97)	0.12 (0.11-0.14)
Guatemala	28662 (24586-33293)	74786 (63935-88169)	652.76 (552.87-786.42)	643.15 (545.44-773.02)	0.04 (0.01-0.08)
Honduras	17806 (15447-20364)	44256 (37681-51988)	672.1 (560.58-800.75)	657.44 (551.11-788.78)	0.01 (-0.02-0.03)
Mexico	366966 (328042-407908)	853851 (758489-969748)	717.65 (636.15-814.22)	712.68 (634.91-808.15)	0.01 (-0.02-0.05)
Nicaragua	15013 (13081-17111)	35630 (30371-41783)	710.1 (605.05-851.66)	705.89 (597.59-841.38)	0.05 (0.02-0.07)
Panama	12187 (10388-14362)	32356 (27691-38417)	728.81 (608.02-883.98)	733.93 (626-870.33)	0.06 (0.04-0.07)
Venezuela (Bolivarian Republic of)	87502 (75855-100532)	207335 (174793-246713)	762.46 (651.38-898.45)	744.74 (631.2-885.39)	0.02 (-0.01-0.04)
<b>Tropical Latin America</b>					
Brazil	685835 (606232-767559)	1633957 (1448187-1850611)	707.61 (622.15-805.29)	700.1 (620.96-789.68)	0.04 (0.01-0.07)
Paraguay	18951 (16256-21560)	41055 (35144-48142)	702.67 (592.52-827.65)	698.21 (592.13-829.96)	0.04 (0.02-0.07)
<b>North Africa and Middle East</b>					
Afghanistan	43545 (36512-51688)	94872 (82454-108120)	623.74 (516.69-761.11)	628.56 (527.04-759.26)	0.03 (0.02-0.05)
Algeria	115156 (98196-133677)	282530 (240467-332317)	768.09 (642.28-912.32)	797.23 (678.17-959.48)	0.14 (0.13-0.15)
Bahrain	1932 (1678-2209)	7969 (6691-9424)	751.16 (633.17-903.24)	814.75 (692.47-970.29)	0.29 (0.28-0.3)
Egypt	220848 (191953-253024)	492104 (423228-569916)	697.87 (581.02-828)	744.85 (631.37-898.99)	0.2 (0.19-0.21)
Iran (Islamic Republic of)	254231 (229906-282073)	600289 (533023-675048)	774.54 (683.84-877.14)	809.51 (717.15-921.19)	0.13 (0.12-0.14)
Iraq	80024 (69020-91700)	198110 (170051-229127)	723.18 (599.87-868.82)	752.72 (640.94-906.68)	0.15 (0.14-0.16)
Jordan	15221 (13307-17374)	65574 (56005-75716)	777.02 (653.37-937.85)	816.99 (695.06-962.64)	0.18 (0.17-0.2)
Kuwait	7378 (6409-8416)	27741 (23425-32271)	862.52 (721.11-1036.07)	896.16 (753.32-1079.93)	0.13 (0.11-0.16)
Lebanon	17183 (14706-20264)	48762 (40823-58604)	769.58 (647.08-928.21)	812.75 (685.34-966.24)	0.19 (0.18-0.21)
Libya	19325 (16817-22154)	39796 (34166-46585)	777.67 (655.26-924.49)	782.54 (657.92-931.93)	0.05 (0.03-0.07)
Morocco	116759 (100121-135569)	237333 (198818-283263)	705.18 (585.55-842.85)	731.94 (615.95-884.83)	0.12 (0.12-0.12)
Oman	7432 (6578-8376)	20008 (17167-23303)	692.49 (594.04-807.42)	762.38 (641.21-921.08)	0.31 (0.29-0.33)
Palestine	9130 (7925-10504)	23904 (20804-27495)	729.86 (611.57-865.47)	760.54 (641.97-905.18)	0.12 (0.11-0.13)
Qatar	1664 (1437-1918)	12773 (10821-15135)	801.89 (673.05-959.72)	864.94 (734.12-1017.07)	0.29 (0.27-0.31)
Saudi Arabia	62838 (54831-71282)	166148 (143791-193176)	742.1 (621.9-893.67)	802.96 (678.58-961.03)	0.27 (0.26-0.28)
Sudan	76840 (64619-88886)	171230 (147765-196204)	674.78 (545.79-814.43)	706.62 (596.92-851.83)	0.16 (0.15-0.16)
Syrian Arab Republic	54080 (46645-61927)	93998 (78984-113264)	750.52 (620.4-893.95)	791.02 (664.75-960.92)	0.18 (0.15-0.22)
Tunisia	43016 (36618-50468)	97595 (82241-117308)	775.23 (647.57-941.65)	801.81 (674.93-959.44)	0.1 (0.1-0.11)
Türkiye	301041 (258654-350058)	717157 (600899-859863)	788.67 (665.15-942.32)	831.38 (702.62-996.93)	0.21 (0.18-0.23)
United Arab Emirates	6774 (5906-7728)	45606 (37436-54719)	795.56 (676.99-937.9)	861.26 (719.42-1024.69)	0.26 (0.24-0.29)
Yemen	46403 (40057-53629)	125563 (108472-143824)	657.75 (550.11-789.27)	683.02 (579.74-818.08)	0.14 (0.13-0.16)
<b>South Asia</b>					
Bangladesh	336392 (291091-390595)	809358 (685010-963194)	540.54 (453.9-648.21)	602.95 (510.28-719.33)	0.38 (0.37-0.4)
Bhutan	1736 (1494-1988)	3674 (3127-4299)	535.92 (452.04-639.88)	604.69 (515.63-713.75)	0.43 (0.41-0.44)
India	2715763 (2448379-3016349)	6722228 (5937217-7631762)	532.4 (471.71-605.64)	595.16 (526.69-677.85)	0.42 (0.41-0.44)
Nepal	57371 (49168-66047)	134577 (112915-158904)	519.93 (429.23-618.35)	583.58 (487.67-696.96)	0.4 (0.39-0.4)
Pakistan	374279 (332523-416454)	803962 (719443-893678)	543.29 (479.67-620.59)	577.37 (507.37-661.31)	0.21 (0.2-0.23)
<b>East Asia</b>					
China	4683303 (4036499-5435212)	13099727 (11320895-15376467)	644.58 (558.65-751.14)	692.5 (607.26-802)	0.23 (0.2-0.27)
Democratic People's Republic of Korea	75073 (62108-91698)	171489 (140046-214280)	542.33 (440.94-677.83)	595.34 (492.56-731.51)	0.31 (0.29-0.32)
Taiwan (Province of China)	89537 (73424-109883)	263229 (213899-327993)	625.66 (511.59-783.68)	672.69 (558.99-823.74)	0.24 (0.14-0.34)
<b>Oceania</b>					
American Samoa	143 (123-165)	243 (202-291)	561.39 (464.19-683.8)	582.34 (487-703.97)	0.1 (0.09-0.11)
Cook Islands	74 (62-88)	149 (123-185)	589.31 (479.78-724.57)	629.67 (528.69-767.12)	0.21 (0.21-0.21)
Fiji	2028 (1722-2370)	3654 (3042-4378)	528.63 (435.8-645.22)	547.66 (459.28-667.43)	0.08 (0.07-0.09)
Guam	451 (384-530)	1242 (1021-1525)	600.71 (496.67-735.5)	616.53 (517.91-750.57)	0.09 (0.07-0.1)
Kiribati	183 (155-213)	327 (277-384)	472.75 (386.94-582.31)	491.29 (408.82-597.63)	0.11 (0.1-0.11)
Marshall Islands	110 (94-128)	163 (139-193)	503.62 (420.37-623.99)	531.65 (441.9-657.76)	0.18 (0.17-0.19)
Micronesia (Federated States of)	292 (246-343)	337 (285-399)	503.2 (416.94-619.1)	530.85 (441.82-642.77)	0.16 (0.15-0.17)

TableS1(continued)

Nauru	25 (21–29)	30 (26–36)	511.06 (417.7–634.11)	520.27 (433.88–634.68)	0.05 (0.01–0.09)
Niue	13 (11–16)	11 (9–14)	542.27 (447.95–664.44)	573.55 (479.31–704.95)	0.16 (0.15–0.16)
Northern Mariana Islands	115 (99–131)	252 (212–304)	606.85 (498.52–738.44)	623.15 (521.72–749.39)	0.04 (0.02–0.06)
Palau	52 (44–63)	97 (80–120)	543.1 (443.81–671.52)	574.81 (480.41–706.22)	0.15 (0.14–0.17)
Papua New Guinea	9679 (8266–11305)	26968 (23004–31318)	516.17 (427.52–631.93)	533.99 (449.15–646.06)	0.08 (0.07–0.09)
Samoa	534 (456–626)	847 (725–1011)	554.06 (456.73–678.06)	578.18 (484.9–709.87)	0.11 (0.1–0.12)
Solomon Islands	807 (691–932)	1876 (1608–2171)	507.49 (417.56–630.58)	522.92 (436.89–635.65)	0.06 (0.05–0.08)
Tokelau	7 (6–9)	8 (7–10)	545.44 (453.47–677.11)	578.04 (481.18–706.97)	0.17 (0.16–0.18)
Tonga	347 (296–408)	497 (419–591)	569.96 (469.71–693.32)	587.01 (489.95–711.26)	0.07 (0.07–0.08)
Tuvalu	31 (26–37)	51 (43–62)	499.61 (407.52–610.66)	534.8 (449.39–652.75)	0.2 (0.19–0.21)
Vanuatu	379 (321–442)	919 (785–1079)	516.36 (425.14–631.16)	527.04 (438.44–637.51)	0.05 (0.05–0.06)
<b>Southeast Asia</b>					
Cambodia	24706 (20940–28769)	58857 (49295–70911)	480.76 (391.12–599.51)	520.24 (430.79–644.82)	0.27 (0.25–0.29)
Indonesia	506390 (450318–568265)	1099460 (963117–1264038)	512.47 (445.76–591.2)	543.69 (475.8–623.55)	0.17 (0.16–0.19)
Lao People's Democratic Republic	10363 (8714–12175)	22534 (19057–26892)	473.84 (389.84–585.4)	513.59 (425.69–630.29)	0.27 (0.25–0.29)
Malaysia	60614 (52350–69864)	157561 (132837–187768)	562.22 (467.68–680.71)	607.56 (512.28–729.19)	0.26 (0.25–0.27)
Maldives	594 (512–686)	1975 (1698–2308)	556.77 (463.16–683.24)	610.49 (513.09–738.67)	0.31 (0.3–0.33)
Mauritius	4084 (3473–4888)	9549 (7781–11679)	568.03 (470.28–685.29)	604.18 (502.21–729.63)	0.17 (0.16–0.18)
Myanmar	109861 (91666–131882)	229237 (191128–279783)	488.89 (403–600.89)	523.75 (431.84–642.52)	0.25 (0.23–0.26)
Philippines	180441 (161393–202033)	429779 (382305–488255)	541.36 (472.74–624.76)	554.2 (488.33–636.83)	0.06 (0.05–0.07)
Seychelles	340 (286–408)	598 (501–722)	556.34 (463.23–673.02)	594.98 (498.36–716.76)	0.21 (0.2–0.22)
Sri Lanka	61489 (52410–72628)	148885 (124476–184153)	569.7 (471.53–690.28)	613.63 (515.76–742.3)	0.24 (0.23–0.26)
Thailand	198340 (167076–235407)	608167 (495442–751305)	577.62 (471.84–702.42)	625.22 (524.14–761.67)	0.25 (0.25–0.26)
Timor-Leste	1670 (1439–1915)	4782 (4054–5714)	505.35 (417.54–620.91)	533.05 (445.12–657.9)	0.18 (0.17–0.19)
Viet Nam	235316 (199947–280329)	513272 (430942–627684)	533.71 (440.32–655.49)	586.76 (487.87–718.85)	0.3 (0.29–0.31)
<b>Central Sub-Saharan Africa</b>					
Angola	30756 (26160–35826)	104717 (89723–120843)	649.24 (537.21–790.68)	689.2 (573.42–828.3)	0.2 (0.19–0.22)
Central African Republic	7686 (6530–8927)	15685 (13338–18105)	597.23 (502.36–734.55)	622.89 (523.4–761.35)	0.13 (0.13–0.14)
Congo	8119 (6928–9435)	20413 (17392–23728)	646.09 (537.71–786.42)	701.99 (593.22–845.67)	0.28 (0.26–0.3)
Democratic Republic of the Congo	121672 (103945–141943)	303504 (261015–353103)	657.72 (539.21–793.78)	687.15 (573.81–838.12)	0.14 (0.11–0.16)
Equatorial Guinea	1433 (1227–1676)	4936 (4245–5675)	645.89 (533.58–776.35)	722.77 (609.26–879.24)	0.42 (0.4–0.45)
Gabon	4359 (3681–5165)	8075 (6916–9521)	679.64 (568.22–819.17)	730.51 (614.62–885.41)	0.24 (0.23–0.25)
<b>Eastern Sub-Saharan Africa</b>					
Burundi	20189 (17104–23952)	45788 (39460–52975)	709.55 (579.51–865.7)	749.88 (628.32–908.12)	0.18 (0.17–0.19)
Comoros	1837 (1561–2158)	4012 (3418–4708)	769.09 (630.44–930.51)	799.17 (671.77–959.74)	0.11 (0.1–0.13)
Djibouti	1365 (1171–1565)	5440 (4677–6350)	764.24 (627.21–928.74)	802.11 (671.39–965.04)	0.15 (0.13–0.17)
Eritrea	10031 (8650–11519)	23542 (20220–27217)	696.54 (580.4–856.38)	730.68 (614.13–887.12)	0.13 (0.11–0.14)
Ethiopia	172786 (153559–193722)	434236 (385261–484800)	717.64 (623.87–826.73)	791.88 (691.7–919.32)	0.31 (0.3–0.32)
Kenya	90526 (80972–100756)	215835 (193000–240565)	787.08 (689.69–901.48)	801.74 (706.67–918.3)	-0.39 (-0.55–0.23)
Madagascar	45670 (38834–53096)	103465 (89248–119948)	752 (624.46–912.4)	774.23 (641.38–951.55)	0.07 (0.06–0.08)
Malawi	33130 (28271–38352)	68387 (58916–79690)	710.8 (585.23–857.74)	743.39 (622.97–895.11)	0.11 (0.09–0.13)
Mozambique	48118 (40994–56213)	104040 (89305–121427)	703.01 (579.07–852.01)	727.19 (597.43–883.63)	0.06 (0.05–0.08)
Rwanda	24627 (20815–28906)	53608 (45321–63361)	711.48 (583.6–865.63)	757.36 (628.84–928.62)	0.2 (0.19–0.22)
Somalia	22108 (19088–25336)	60944 (52370–70089)	691.75 (576.84–845.46)	699.75 (579.82–851.57)	0.01 (0–0.02)
South Sudan	22779 (19502–26761)	35385 (30491–40896)	744.26 (617.53–908.99)	770.88 (646.07–928.48)	0.1 (0.09–0.1)
Uganda	60984 (52300–70864)	151152 (129502–175167)	728.9 (604.67–881.31)	758.14 (624.83–922.41)	0.11 (0.1–0.13)
United Republic of Tanzania	99251 (84228–116496)	241417 (206890–279163)	751.41 (619.33–912.66)	783.06 (655.3–940.15)	0.33 (0.25–0.41)
Zambia	26083 (22290–30278)	67047 (57951–77171)	718.5 (594.29–886.05)	754.87 (632.48–909.43)	0.13 (0.11–0.16)
<b>Southern Sub-Saharan Africa</b>					
Botswana	4713 (4036–5551)	10576 (9088–12402)	680.94 (570.85–830.88)	711.58 (594.71–853.38)	0.13 (0.1–0.16)
Eswatini	2598 (2224–3008)	4251 (3620–4994)	656.84 (543.32–800.74)	681.67 (568.95–835.8)	0.11 (0.08–0.14)
Lesotho	6198 (5248–7342)	7397 (6272–8748)	639.34 (533.56–776.52)	657.19 (552.81–796.39)	0.07 (0.04–0.1)
Namibia	5384 (4625–6293)	10792 (9226–12626)	697.43 (578.37–841.76)	729.24 (612.08–877.39)	0.14 (0.12–0.16)
South Africa	169981 (151116–191718)	332364 (294880–375401)	726.24 (634.24–830.93)	749.82 (665.03–852.66)	0.13 (0.1–0.16)
Zimbabwe	36465 (31010–42476)	55998 (47752–64402)	681.11 (561.12–828.09)	684.67 (571.73–826.78)	-0.04 (-0.07–0.01)
<b>Western Sub-Saharan Africa</b>					
Benin	17862 (15227–20952)	48182 (41398–55238)	673.86 (561.25–820.03)	705.53 (589.26–850.61)	0.14 (0.13–0.14)
Burkina Faso	33547 (28475–39595)	80048 (69323–93161)	656.11 (546.02–799.74)	683.91 (569.14–834.84)	0.14 (0.13–0.15)
Cabo Verde	2147 (1834–2534)	3603 (3059–4237)	764.11 (643.22–921.11)	811.49 (682.4–970.55)	0.21 (0.19–0.22)
Cameroon	36130 (30875–42231)	110737 (95664–129381)	666.67 (554.33–815.57)	704.1 (590.86–860.6)	0.16 (0.14–0.18)
Chad	22380 (19013–26484)	55583 (48125–64020)	648.58 (539.18–795.97)	681.67 (568.39–832.45)	0.16 (0.15–0.18)
Côte d'Ivoire	36346 (31496–41876)	97588 (83781–113070)	669.61 (549.91–817.58)	708.63 (599.3–863.92)	0.19 (0.17–0.21)
Gambia	3340 (2865–3850)	9106 (7843–10476)	686.44 (569.31–827.44)	717.83 (598.87–865.58)	0.14 (0.13–0.15)
Ghana	53258 (45449–61406)	137281 (117985–161017)	683.99 (562.23–824.68)	718.01 (596.18–873.81)	0.13 (0.12–0.14)
Guinea	24591 (20916–29373)	48454 (41935–55863)	657.7 (543.13–811.52)	687.58 (576.02–829.46)	0.13 (0.12–0.14)
Guinea-Bissau	3084 (2650–3616)	6165 (5345–7052)	626.16 (515.48–761.5)	657.6 (555.46–792.3)	0.16 (0.15–0.17)
Liberia	9377 (8013–10980)	18937 (16364–21799)	675.13 (560.18–824.89)	717.41 (601.33–864.68)	0.21 (0.2–0.21)
Mali	29967 (25593–35235)	80152 (68905–93183)	660.36 (548.16–798.97)	700.37 (585.75–848.61)	0.18 (0.17–0.19)
Mauritania	8574 (7348–10037)	19635 (16942–22906)	700.17 (584.57–843.18)	757.41 (635.8–918.67)	0.26 (0.25–0.27)
Niger	23822 (20542–27475)	77428 (67323–89776)	655.73 (546.11–802.03)	684.97 (571.97–831.32)	0.15 (0.14–0.17)
Nigeria	361171 (321773–403574)	851401 (758670–947878)	696.19 (609.13–794.96)	733.28 (645.9–841.95)	0.16 (0.15–0.17)
Sao Tome and Principe	554 (476–648)	958 (819–1111)	707.17 (595.53–849.07)	759.89 (630.05–910.26)	0.23 (0.22–0.23)
Senegal	28724 (24546–33435)	66088 (57357–76570)	691.45 (573.22–835.49)	724.6 (612.13–868.16)	0.13 (0.12–0.14)
Sierra Leone	16061 (13591–18894)	31960 (27543–36904)	663.05 (548.33–808.26)	696.16 (580.85–837.14)	0.14 (0.13–0.16)
Togo	11513 (9899–13285)	30616 (26514–35269)	670.05 (555.78–813.89)	700.37 (588.56–847.75)	0.13 (0.11–0.14)

<sup>†</sup> Color intensity represents value magnitude. Red indicates positive values, darker for larger. Blue indicates negative values, darker for more negative.

**Abbreviations:** ASPR, age-standardized Prevalence per 100,000 population; UI, uncertainty interval; EAPC, estimated annual percentage change; CI, confidence interval; SDI, Socio-demographic Index.

# Table S2

Table S2 The YLDs burden of heart failure and its temporal trends by 204 countries and territories, for all ages and both sexes, 1990–2021

	YLDs (95% UI)		ASyr (95% UI)		1990–2021 EAPC (95% CI) <sup>1</sup>
	1990	2021	1990	2021	
<b>Central Asia</b>					
Armenia	1750 (1152–2434)	2819 (1820–3919)	67.11 (43.15–93.96)	71.62 (47.43–98.98)	0.32 (0.26–0.38)
Azerbaijan	3092 (2048–4417)	5426 (3538–7677)	60.79 (39.52–86.93)	63.81 (41.77–91.03)	0.23 (0.18–0.27)
Georgia	3798 (2430–5390)	3719 (2389–5320)	66.91 (42.99–94.72)	66.79 (42.98–95.17)	0.02 (-0.02–0.07)
Kazakhstan	7670 (5058–10847)	10489 (6811–14791)	62.08 (40.84–88.71)	65.35 (42.18–92.74)	0.28 (0.22–0.34)
Kyrgyzstan	2080 (1377–2936)	3077 (2020–4342)	64.85 (42.93–91.72)	65.31 (42.44–93.25)	0.07 (0.03–0.11)
Mongolia	753 (506–1064)	1308 (861–1870)	58.82 (38.27–83.99)	61.22 (39.76–87.86)	0.22 (0.18–0.27)
Tajikistan	2034 (1352–2860)	3726 (2484–5209)	61.12 (39.34–86.08)	62.61 (40.89–89.04)	0.12 (0.08–0.17)
Turkmenistan	1347 (913–1886)	2380 (1553–3358)	61.18 (40.06–86.41)	63.69 (41.37–90.22)	0.2 (0.16–0.24)
Uzbekistan	8403 (5526–11654)	14975 (9913–21423)	60.41 (39.4–87.1)	61.99 (40.12–88.87)	0.12 (0.08–0.16)
<b>Central Europe</b>					
Albania	1424 (943–1984)	2490 (1576–3587)	63.8 (41.52–89.65)	64.32 (41.56–91.51)	0.06 (0.04–0.08)
Bosnia and Herzegovina	2285 (1505–3207)	3374 (2160–4773)	63.3 (41.45–89.2)	63.69 (41.91–87.62)	0.07 (0.05–0.1)
Bulgaria	6199 (3972–9018)	7399 (4591–10840)	60.13 (39.3–85.95)	58.76 (37.97–83.42)	-0.07 (-0.09–0.05)
Croatia	2824 (1823–4015)	3743 (2433–5325)	54.95 (36.11–77.5)	49.12 (32.28–69.46)	-0.62 (-0.82–0.43)
Czechia	9488 (5915–13754)	14533 (9258–20725)	76.07 (48.55–109.44)	76.3 (50.55–108.33)	0.51 (0.25–0.76)
Hungary	7901 (5094–11386)	10714 (6752–15463)	61.23 (40.39–87.47)	61.96 (40.28–87.89)	0.02 (0–0.03)
Montenegro	387 (252–553)	545 (343–781)	66.25 (43.1–94.85)	65.62 (42.45–92.5)	0 (-0.02–0.01)
North Macedonia	1058 (689–1476)	1678 (1073–2392)	61.37 (39.68–86.79)	62.25 (40.21–87.21)	0.07 (0.06–0.09)
Poland	35897 (24215–49523)	63408 (43324–87949)	89.35 (60.11–123.73)	96.71 (66.12–134.5)	0.29 (0.18–0.39)
Romania	14886 (9426–21109)	20719 (13269–29970)	60.82 (39.45–84.66)	61.65 (40.82–87.41)	0.32 (0.21–0.44)
Serbia	4924 (3160–7004)	7706 (4959–10992)	52.31 (33.58–74.37)	53.44 (35.34–74.63)	-0.43 (-0.64–0.22)
Slovakia	3519 (2242–5113)	5229 (3319–7622)	63.09 (40.55–90.63)	63.72 (41.29–90.58)	0.53 (0.37–0.7)
Slovenia	1463 (932–2082)	2685 (1761–3848)	65.72 (42.69–93.13)	67.95 (45.49–95.61)	0.18 (0.15–0.21)
<b>Eastern Europe</b>					
Belarus	7498 (4802–10582)	9236 (5883–13359)	64.2 (41.3–90.68)	66.22 (42.94–94.18)	0.17 (0.13–0.22)
Estonia	1254 (809–1783)	1704 (1082–2466)	67.32 (44.22–94.98)	68.74 (44.95–97.51)	0.12 (0.09–0.15)
Latvia	2156 (1352–3060)	2438 (1558–3475)	66.16 (42.68–93.34)	66.58 (42.95–93.75)	0.06 (0.02–0.11)
Lithuania	2759 (1743–3929)	3534 (2262–5038)	65.87 (41.77–92.69)	67.07 (44.27–94.19)	0.09 (0.06–0.13)
Republic of Moldova	2483 (1595–3562)	3317 (2148–4754)	62.43 (40.36–88.97)	64.1 (41.81–90.72)	0.13 (0.1–0.17)
Russian Federation	101673 (68937–140926)	137331 (92158–191646)	64.33 (43.63–89.8)	65.3 (44.39–90.42)	0.09 (0.05–0.14)
Ukraine	40653 (27062–56798)	42572 (28472–60134)	64.93 (43.75–89.95)	63.14 (42.75–88.14)	-0.03 (-0.06–0)
<b>Australasia</b>					
Australia	13565 (8834–19136)	30868 (20747–43692)	73.06 (48.12–102.75)	73.26 (49.82–101.97)	-0.21 (-0.34–0.07)
New Zealand	2309 (1542–3239)	4614 (3095–6384)	61.64 (41.61–86.13)	60.66 (41.22–83.46)	-0.19 (-0.28–0.1)
<b>High-income Asia Pacific</b>					
Brunei Darussalam	65 (44–90)	136 (90–186)	41.41 (27.78–57.33)	42.06 (28.52–58.05)	0.04 (0.03–0.04)
Japan	64572 (43657–89456)	135402 (92601–188307)	45.56 (31.22–62.76)	44.2 (30.13–60.91)	-0.14 (-0.17–0.11)
Republic of Korea	15361 (10422–21058)	42961 (29227–58567)	51.79 (35.26–72.02)	56.59 (38.21–77.32)	0.33 (0.21–0.46)
Singapore	1038 (689–1422)	3539 (2378–4927)	47.48 (31.54–66.55)	49.66 (33.36–68.87)	0.14 (0.13–0.15)
<b>High-income North America</b>					
Canada	25577 (16973–36333)	55866 (35937–78749)	83.14 (55.69–116.96)	86.81 (57.2–120.29)	0.16 (0.05–0.27)
Greenland	23 (15–32)	39 (25–55)	69.51 (45.43–97.96)	71.09 (46.46–99.28)	0.11 (0.1–0.12)
United States of America	241867 (163090–334578)	429830 (296095–594497)	79.69 (53.99–109.91)	81.83 (55.92–113.19)	0 (-0.03–0.04)
<b>Southern Latin America</b>					
Argentina	18377 (12217–25711)	28362 (18724–39621)	58.34 (38.72–81.52)	53.53 (35.64–74.27)	-0.27 (-0.29–0.25)
Chile	6241 (4185–8624)	13401 (8869–18767)	59.03 (39.53–81.86)	57.66 (38.1–80)	-0.02 (-0.04–0)
Uruguay	1925 (1264–2738)	2709 (1785–3812)	52.88 (34.7–74.08)	52.29 (34.69–73.29)	-0.03 (-0.04–0.02)
<b>Western Europe</b>					
Andorra	26 (17–37)	71 (45–102)	52.33 (33.76–73.52)	52.79 (34.51–74.52)	0 (-0.02–0.01)
Austria	9909 (6678–13891)	11274 (7643–15706)	87.31 (59.77–121.81)	64.64 (44.42–89.14)	-1.33 (-1.47–1.18)
Belgium	6369 (4108–9344)	8702 (5867–12120)	46.09 (30.08–65.93)	41.3 (28.24–57.15)	0.02 (-0.09–0.13)
Cyprus	305 (194–431)	794 (498–1137)	41.48 (27.1–58.96)	43.91 (28.59–61.18)	-0.27 (-0.45–0.1)
Denmark	3165 (2035–4555)	5098 (3257–7367)	43.23 (28.98–61.3)	47.45 (30.81–66.25)	0.45 (0.22–0.68)
Finland	3913 (2591–5529)	7319 (4742–10496)	60.76 (40.7–84.36)	62.18 (41.31–87.73)	0.12 (-0.09–0.33)
France	79329 (52134–111723)	142990 (94952–204933)	100.11 (67.19–141.38)	103.29 (67.32–143.42)	0.04 (-0.09–0.16)
Germany	68522 (44459–99326)	113978 (72794–161491)	60.36 (39.98–85.38)	63.39 (40.85–88.58)	0.97 (0.68–1.25)
Greece	5824 (3730–8183)	7132 (4732–10055)	43.77 (28.86–61.06)	34.03 (23.41–47.98)	-1.28 (-1.46–1.1)
Iceland	84 (55–118)	156 (101–223)	29.91 (19.66–41.51)	30.07 (20.07–42.24)	-0.18 (-0.36–0.01)
Ireland	1898 (1214–2721)	3666 (2335–5197)	48.61 (31.56–68.52)	50.99 (33.07–71.31)	0.18 (0.16–0.19)
Israel	2072 (1357–2963)	5662 (3643–7980)	42.72 (28.43–60.89)	45.98 (30.21–63.89)	0.21 (0.13–0.29)
Italy	51778 (34883–72091)	94755 (65487–131070)	66.25 (44.99–92.12)	67.84 (46.6–93.66)	0.25 (-0.01–0.5)
Luxembourg	275 (176–391)	564 (362–794)	56.92 (37.47–80.16)	58.69 (38.47–81.78)	-0.12 (-0.47–0.24)
Malta	187 (121–269)	439 (280–636)	48.52 (32.3–68.67)	49.79 (32.02–69.11)	0.56 (0.38–0.74)
Monaco	32 (21–47)	46 (29–65)	51.04 (33.8–72.58)	51.63 (33.23–72.17)	0.02 (0.02–0.03)
Netherlands	8835 (5863–12618)	16451 (10362–23701)	47.53 (31.95–66.92)	52.2 (33.68–73.77)	0.21 (0.11–0.32)
Norway	3389 (2296–4704)	4968 (3327–7036)	53.11 (35.95–73.84)	54.4 (36.79–75.28)	0.11 (0.09–0.12)
Portugal	6139 (3866–8838)	11679 (7377–16355)	49.88 (32.21–70.84)	50.87 (33.28–71.08)	-0.08 (-0.14–0.02)
San Marino	17 (11–25)	38 (25–56)	53.17 (34.63–75.44)	53.58 (34.54–76.11)	0 (-0.02–0.01)
Spain	25507 (16097–36430)	52502 (35385–72461)	51.58 (32.98–72.33)	57.26 (38.57–78.68)	0.02 (-0.09–0.13)
Sweden	12998 (8801–18202)	20625 (13617–29278)	97.27 (66.13–134.57)	99.87 (66.88–137.67)	-0.03 (-0.11–0.05)
Switzerland	4184 (2692–5921)	7464 (4738–10523)	43.53 (28.24–61.13)	44.7 (28.94–61.74)	0.39 (0.11–0.68)
United Kingdom	33844 (22402–47730)	46882 (31821–66296)	41.06 (27.74–57.53)	40.97 (27.87–57.04)	-0.17 (-0.22–0.11)

TableS2(continued)

<b>Andean Latin America</b>					
Bolivia (Plurinational State of)	2940 (1923–4220)	6174 (4095–8624)	78.39 (50.94–111.34)	67.5 (44.82–92.91)	-0.32 (-0.38–0.25)
Ecuador	4053 (2739–5674)	10728 (6970–15064)	63.81 (41.86–90.53)	65.55 (42.55–92.06)	0.13 (0.12–0.15)
Peru	8934 (6051–12378)	23060 (15137–32041)	63.58 (42.15–88.41)	68.4 (44.64–95.68)	0.29 (0.28–0.31)
<b>Caribbean</b>					
Antigua and Barbuda	41 (27–58)	64 (41–90)	69.04 (45.99–97.96)	69.53 (45.4–97.57)	-0.04 (-0.08–0)
Bahamas	107 (71–150)	232 (151–326)	62.35 (40.67–88.45)	65.74 (42.26–93.41)	0.17 (0.16–0.18)
Barbados	199 (129–287)	321 (208–459)	66.56 (43.89–94.43)	70.82 (46.94–101.37)	0.18 (0.17–0.19)
Belize	79 (53–111)	204 (135–282)	64.34 (42.62–90.43)	67.75 (44.11–95.54)	0.16 (0.15–0.17)
Bermuda	40 (26–57)	91 (58–131)	69.58 (45.98–97.97)	76.16 (49.52–107.89)	0.29 (0.27–0.31)
Cuba	7007 (4513–9925)	12588 (8051–18050)	68.96 (44.41–96.96)	72.25 (47.2–102.58)	0.15 (0.13–0.16)
Dominica	39 (26–56)	47 (30–67)	60.52 (39.66–86.63)	63.7 (41.53–89.59)	0.15 (0.14–0.16)
Dominican Republic	2763 (1817–3864)	6585 (4299–9187)	63.64 (41.5–89.83)	66.35 (43.11–92.64)	0.1 (0.08–0.13)
Grenada	52 (34–72)	64 (41–91)	60.95 (39.82–85.8)	63.87 (42.55–90.34)	0.09 (0.07–0.11)
Guyana	261 (171–374)	356 (235–501)	56.93 (36.86–82.3)	59.77 (39.22–84.69)	0.13 (0.12–0.14)
Haiti	1835 (1206–2553)	4060 (2686–5594)	52.33 (34.24–73.73)	55.7 (35.15–78.43)	0.19 (0.17–0.21)
Jamaica	1382 (918–1963)	2125 (1408–3004)	67.57 (44.37–95.64)	70.36 (46.34–99.06)	0.07 (0.03–0.11)
Puerto Rico	2532 (1615–3607)	5096 (3272–7146)	70.5 (45.15–99.12)	75.57 (49.51–106.63)	0.23 (0.22–0.24)
Saint Kitts and Nevis	24 (16–35)	36 (23–51)	60.12 (39.06–85.35)	64.89 (41.64–91.12)	0.23 (0.2–0.26)
Saint Lucia	65 (43–91)	144 (94–202)	64 (41.36–89.2)	68.18 (45.21–95.62)	0.19 (0.17–0.21)
Saint Vincent and the Grenadines	51 (33–72)	85 (54–119)	61.64 (39.31–87.03)	65.85 (42.41–92.85)	0.2 (0.19–0.21)
Suriname	170 (111–238)	376 (245–533)	62.47 (40.37–87.94)	64.9 (42.56–91.81)	0.11 (0.1–0.13)
Trinidad and Tobago	571 (377–805)	1150 (751–1641)	62.5 (40.33–88.64)	66.91 (43.74–94.43)	0.24 (0.23–0.25)
United States Virgin Islands	52 (33–71)	109 (69–157)	63.39 (40.53–89.24)	67.75 (44.23–96.18)	0.18 (0.17–0.19)
<b>Central Latin America</b>					
Colombia	12493 (8319–17168)	34848 (22649–49084)	61.47 (40.65–85.82)	65.61 (42.97–91.96)	0.22 (0.21–0.24)
Costa Rica	1420 (962–2001)	3624 (2347–5110)	67.09 (44.61–94.29)	70.01 (45.31–98.05)	0.17 (0.16–0.17)
El Salvador	2236 (1505–3132)	4299 (2862–6063)	62.33 (41.18–87.69)	66.09 (43.73–92.62)	0.25 (0.23–0.26)
Guatemala	2690 (1790–3745)	7241 (4800–9991)	59.21 (39.25–83.73)	61.78 (40.39–86.56)	0.18 (0.16–0.19)
Honduras	1619 (1081–2268)	4093 (2724–5686)	59.74 (39.39–83.96)	60.34 (38.81–84.71)	0.07 (0.06–0.09)
Mexico	34258 (23123–47222)	80781 (54609–112072)	65.8 (44.41–90.4)	67.27 (45.71–93.34)	0.08 (0.06–0.09)
Nicaragua	1400 (940–1955)	3411 (2280–4683)	64.67 (42.32–90.17)	67.09 (43.96–92.21)	0.16 (0.14–0.17)
Panama	1121 (749–1579)	3054 (2018–4231)	66.77 (43.64–93.74)	69.33 (45.88–96.15)	0.13 (0.11–0.14)
Venezuela (Bolivarian Republic of)	7673 (5200–10621)	18590 (12163–25795)	65.88 (43.53–92.43)	67.03 (43.98–92.84)	0.13 (0.11–0.14)
<b>Tropical Latin America</b>					
Brazil	61956 (41667–84916)	149769 (101823–206747)	63.53 (42.85–87.35)	64.27 (43.7–88.49)	0.08 (0.06–0.1)
Paraguay	1749 (1195–2463)	3834 (2503–5376)	64.33 (42.78–91.06)	65.11 (42.05–91.13)	0.07 (0.06–0.09)
<b>North Africa and Middle East</b>					
Afghanistan	4085 (2693–5659)	8982 (6059–12609)	58.02 (38.22–82.01)	58.67 (38.33–81.89)	0.04 (0.03–0.06)
Algeria	10807 (7217–15285)	26494 (17287–36700)	71.41 (46.88–99.43)	74.46 (48.94–104.45)	0.15 (0.14–0.16)
Bahrain	182 (121–254)	755 (515–1050)	70.06 (46.08–98.37)	76.67 (51.13–106.72)	0.32 (0.31–0.33)
Egypt	21225 (14318–29489)	46901 (31527–64712)	66.29 (43.93–93.46)	70.27 (46.58–97.06)	0.18 (0.17–0.19)
Iran (Islamic Republic of)	23919 (16351–33261)	56127 (38639–76381)	72.21 (49.55–99.83)	75.52 (52.12–103.73)	0.13 (0.12–0.14)
Iraq	7583 (5050–10638)	18820 (12468–26162)	68.28 (44.53–96.4)	71.18 (47.42–99.06)	0.15 (0.14–0.16)
Jordan	1451 (990–2011)	6235 (4153–8628)	73.27 (48.53–102.95)	77.04 (51.06–106.42)	0.18 (0.17–0.2)
Kuwait	692 (461–963)	2594 (1717–3624)	79.9 (52.3–112.22)	83.49 (54.67–114.95)	0.16 (0.12–0.2)
Lebanon	1636 (1079–2272)	4643 (3039–6488)	72.94 (47.78–102.72)	77.52 (50.67–108.24)	0.21 (0.19–0.23)
Libya	1819 (1233–2546)	3736 (2491–5228)	72.71 (47.63–102.05)	73.18 (48.42–102.61)	0.06 (0.04–0.07)
Morocco	10936 (7286–15200)	22184 (14780–30928)	65.3 (42.9–91.26)	68.2 (44.87–94.87)	0.14 (0.14–0.14)
Oman	695 (476–970)	1877 (1262–2593)	64.01 (43.09–88.67)	70.77 (47.45–99.42)	0.32 (0.3–0.34)
Palestine	866 (582–1216)	2274 (1511–3178)	68.73 (44.92–95.76)	71.91 (46.87–99.46)	0.14 (0.13–0.15)
Qatar	157 (105–218)	1215 (817–1752)	75 (49.15–104.12)	81.69 (53.93–113.65)	0.33 (0.31–0.36)
Saudi Arabia	5940 (4003–8304)	15778 (10324–21884)	69.35 (45.61–96.85)	75.63 (49.48–105.87)	0.3 (0.29–0.31)
Sudan	7209 (4733–10144)	16080 (10763–22378)	62.67 (40.76–89.17)	65.69 (43.61–91.43)	0.16 (0.15–0.16)
Syrian Arab Republic	5124 (3497–7119)	8830 (5770–12367)	70.01 (45.96–97.97)	73.88 (48.77–103.31)	0.18 (0.15–0.21)
Tunisia	4048 (2639–5722)	9153 (5950–12692)	72.42 (46.84–101.56)	75.17 (48.95–103.97)	0.11 (0.11–0.12)
Türkiye	28524 (19025–39825)	67825 (44361–93133)	74.41 (49.54–103.65)	78.52 (51.49–107.12)	0.21 (0.19–0.23)
United Arab Emirates	634 (421–885)	4287 (2844–6069)	74.11 (48–103.23)	80.44 (53.54–112.46)	0.27 (0.25–0.29)
Yemen	4351 (2937–6115)	11752 (7896–16362)	61.16 (40.16–85.72)	63.55 (41.08–88.99)	0.14 (0.12–0.16)
<b>South Asia</b>					
Bangladesh	32618 (22500–45337)	78325 (51079–107523)	52.04 (34.45–72.68)	58.2 (38.28–79.97)	0.38 (0.36–0.39)
Bhutan	164 (113–231)	346 (227–484)	50.2 (32.93–70.78)	56.74 (37.13–78.96)	0.43 (0.42–0.44)
India	253150 (172880–347081)	624997 (425464–854741)	48.98 (33.5–66.79)	54.96 (37.44–75.83)	0.43 (0.41–0.45)
Nepal	5390 (3591–7544)	12587 (8316–17420)	48.26 (31.56–67.86)	54.22 (35.98–74.81)	0.39 (0.38–0.4)
Pakistan	35086 (23542–48300)	75369 (51162–103772)	50.42 (34.16–69.94)	53.49 (36.24–74.1)	0.21 (0.19–0.22)
<b>East Asia</b>					
China	459520 (313552–630785)	1290810 (865894–1775731)	62.83 (42.81–87.18)	67.79 (45.92–93.34)	0.24 (0.2–0.28)
Democratic People's Republic of Korea	7358 (4781–10363)	16854 (10924–23869)	52.96 (34.41–75.6)	58.18 (37.92–82.88)	0.3 (0.29–0.32)
Taiwan (Province of China)	8942 (5809–12903)	25555 (16386–36588)	62.15 (40.41–88.83)	65.23 (42.19–92.48)	0.12 (0.03–0.22)
<b>Oceania</b>					
American Samoa	14 (9–19)	23 (15–33)	53.84 (34.52–76.82)	55.99 (36.66–78.83)	0.1 (0.09–0.11)
Cook Islands	7 (5–10)	14 (9–20)	54.69 (36.07–77.59)	58.49 (37.89–85.02)	0.21 (0.21–0.21)
Fiji	192 (122–269)	346 (227–485)	49.72 (31.96–70.51)	51.59 (34.18–72.37)	0.08 (0.07–0.1)
Guam	42 (28–59)	116 (76–165)	56.07 (36.48–80.07)	57.99 (37.52–82.28)	0.1 (0.08–0.13)
Kiribati	18 (11–25)	32 (21–44)	45.75 (29.64–64.84)	47.64 (31.23–66.72)	0.11 (0.1–0.12)
Marshall Islands	11 (7–15)	16 (10–22)	48.1 (31.84–68.02)	50.7 (33.43–71.45)	0.18 (0.17–0.19)
Micronesia (Federated States of)	28 (18–39)	32 (21–45)	48.11 (30.89–68.48)	50.7 (32.22–71.59)	0.16 (0.14–0.17)

TableS2(continued)

Nauru	2 (2-3)	3 (2-4)	48.52 (31.53-69.67)	49.34 (32.03-69.23)	0.05 (0.01-0.09)
Niue	1 (1-2)	1 (1-1)	51.61 (33.5-72.91)	54.53 (35.8-76.11)	0.15 (0.15-0.16)
Northern Mariana Islands	11 (8-16)	25 (16-35)	60 (39.07-85.1)	60.69 (39.98-86.18)	-0.03 (-0.05-0.01)
Palau	5 (3-7)	9 (6-14)	52.12 (33.53-75.33)	55.02 (36.11-79.58)	0.15 (0.14-0.16)
Papua New Guinea	923 (607-1277)	2565 (1705-3581)	49.44 (32.16-69.44)	50.96 (32.9-71.66)	0.06 (0.05-0.08)
Samoa	51 (34-72)	81 (54-113)	52.82 (33.92-75.5)	55.04 (36.6-78.23)	0.1 (0.09-0.11)
Solomon Islands	77 (51-109)	179 (119-254)	48.47 (31.14-68.69)	49.98 (32.93-69.83)	0.07 (0.06-0.09)
Tokelau	1 (0-1)	1 (1-1)	51.9 (33.15-72.74)	54.86 (35.4-78.42)	0.16 (0.15-0.17)
Tonga	33 (22-47)	48 (31-66)	54.9 (35.8-77.94)	56.47 (35.87-78.23)	0.07 (0.06-0.08)
Tuvalu	3 (2-4)	5 (3-7)	47.66 (31.07-68.31)	50.84 (33.35-72.49)	0.18 (0.17-0.2)
Vanuatu	36 (24-52)	87 (57-122)	49.08 (32.16-70.51)	49.88 (32.39-70.62)	0.04 (0.03-0.04)
<b>Southeast Asia</b>					
Cambodia	2408 (1610-3402)	5769 (3752-8123)	46.69 (30.29-66.12)	50.75 (33.28-73.13)	0.28 (0.27-0.3)
Indonesia	50573 (34714-69097)	109258 (73519-150497)	50.66 (34.73-71.12)	53.75 (36.33-74.86)	0.17 (0.16-0.19)
Lao People's Democratic Republic	999 (652-1402)	2180 (1428-3086)	45.48 (29.22-64.37)	49.49 (32.29-70.8)	0.28 (0.26-0.3)
Malaysia	5791 (3850-8053)	15209 (9873-21403)	53.73 (34.86-76.41)	58.43 (38.27-81.69)	0.28 (0.27-0.29)
Maldives	58 (39-81)	193 (130-269)	54.45 (35.37-78.06)	59.6 (39.12-83.63)	0.3 (0.29-0.31)
Mauritius	395 (260-555)	916 (602-1306)	54.56 (35.14-76.14)	57.89 (38.22-81.49)	0.15 (0.14-0.17)
Myanmar	10602 (6944-14862)	22169 (14210-31775)	46.78 (30.53-65.93)	50.4 (32.59-72.5)	0.27 (0.25-0.29)
Philippines	17243 (11773-23739)	40972 (28166-56498)	51.23 (34.83-71.41)	52.5 (35.78-73.6)	0.06 (0.05-0.07)
Seychelles	32 (21-45)	56 (36-80)	51.61 (33.34-73.11)	55.65 (35.86-78.46)	0.25 (0.24-0.26)
Sri Lanka	5876 (3864-8223)	14326 (9256-20507)	54.4 (35.28-76.19)	59 (38.34-84.77)	0.29 (0.27-0.3)
Thailand	20029 (13117-28446)	61732 (39162-87420)	58.1 (37.5-83.28)	63.29 (40.54-89.51)	0.28 (0.27-0.28)
Timor-Leste	160 (108-224)	460 (303-639)	48.18 (30.99-67.14)	51.05 (33.31-71.79)	0.19 (0.18-0.2)
Viet Nam	23668 (15934-32904)	51877 (33818-72986)	53.61 (35.68-75.73)	59.17 (37.96-82.5)	0.32 (0.31-0.32)
<b>Central Sub-Saharan Africa</b>					
Angola	3122 (2056-4371)	10586 (7118-14845)	65.76 (43.07-93.73)	70.06 (45.67-98.39)	0.22 (0.2-0.23)
Central African Republic	781 (528-1085)	1581 (1057-2228)	60.68 (39.13-85.59)	63.19 (41.23-89.56)	0.13 (0.13-0.14)
Congo	824 (541-1153)	2044 (1365-2853)	65.48 (42.97-94.43)	70.66 (46.14-100.33)	0.26 (0.24-0.27)
Democratic Republic of the Congo	12307 (8081-17197)	30523 (20788-43185)	66.39 (42.68-95.53)	69.49 (44.06-98.88)	0.14 (0.12-0.17)
Equatorial Guinea	145 (95-204)	494 (333-698)	64.91 (42.5-90.83)	72.22 (46.31-100.76)	0.39 (0.37-0.4)
Gabon	439 (288-612)	802 (531-1128)	68.32 (44.36-96.51)	72.57 (47.29-101.37)	0.2 (0.19-0.21)
<b>Eastern Sub-Saharan Africa</b>					
Burundi	2005 (1317-2848)	4513 (2975-6331)	70.58 (47.23-101.32)	74.4 (48.6-104.92)	0.17 (0.16-0.18)
Comoros	181 (119-253)	394 (262-550)	75.87 (49.4-108.61)	78.59 (51.77-109.65)	0.1 (0.09-0.12)
Djibouti	134 (90-187)	533 (356-731)	75.51 (48.2-106.89)	78.86 (51.13-109.85)	0.14 (0.12-0.16)
Eritrea	987 (656-1376)	2320 (1546-3210)	69 (44.92-99.54)	72.43 (46.3-101.43)	0.12 (0.11-0.14)
Ethiopia	16798 (11246-23376)	42424 (28657-58906)	69.13 (46.58-95.61)	77.13 (51.8-106.96)	0.36 (0.35-0.37)
Kenya	8720 (5882-12097)	20829 (14064-28439)	75.76 (51.65-104.26)	77.4 (52.93-107.27)	-0.38 (-0.55-0.22)
Madagascar	4519 (2996-6240)	10246 (6835-14214)	74.55 (47.76-105.03)	77.29 (49.57-111.78)	0.1 (0.09-0.1)
Malawi	3278 (2130-4585)	6779 (4604-9614)	70.13 (45.6-98.91)	73.9 (48.4-104.69)	0.14 (0.12-0.15)
Mozambique	4991 (3268-6882)	10780 (7211-15093)	73.54 (47.91-104.68)	76.72 (49.58-107.8)	0.09 (0.07-0.1)
Rwanda	2442 (1622-3420)	5292 (3510-7320)	70.85 (46.15-101.05)	75.17 (48.92-105.18)	0.19 (0.17-0.21)
Somalia	2161 (1423-3012)	5960 (3957-8352)	67.66 (43.68-96.11)	68.44 (45.57-96.13)	0.02 (0-0.03)
South Sudan	2232 (1461-3160)	3458 (2325-4806)	72.53 (47.46-102.95)	75.08 (48.25-104.72)	0.09 (0.09-0.1)
Uganda	5998 (3965-8418)	14800 (9929-20712)	71.75 (45.87-100.76)	74.35 (48.25-104.31)	0.08 (0.06-0.1)
United Republic of Tanzania	9719 (6247-13498)	23751 (16069-33439)	73.22 (47.03-104.07)	77.02 (50.74-107.85)	0.37 (0.29-0.45)
Zambia	2564 (1681-3559)	6584 (4437-9320)	70.25 (45.44-99.5)	74.28 (47.9-104.77)	0.16 (0.14-0.19)
<b>Southern Sub-Saharan Africa</b>					
Botswana	474 (311-670)	1052 (710-1468)	69.42 (45.15-97.97)	71.4 (46.2-100.7)	0.08 (0.05-0.11)
Eswatini	258 (172-364)	421 (282-591)	66.23 (42.78-94.59)	68.35 (44.38-96.31)	0.09 (0.06-0.12)
Lesotho	623 (416-871)	738 (489-1038)	64.91 (42.17-93.72)	66.19 (42.96-92.8)	0.04 (0.01-0.07)
Namibia	541 (359-770)	1083 (716-1540)	71.05 (46.26-101.91)	74.15 (48.65-104.65)	0.13 (0.11-0.15)
South Africa	16957 (11405-23430)	32973 (22175-45725)	72.53 (49.32-101.55)	74.51 (50.7-104)	0.1 (0.07-0.13)
Zimbabwe	3553 (2341-5014)	5481 (3711-7762)	67.51 (43.54-97.02)	68.09 (44.59-96.88)	-0.03 (-0.05-0)
<b>Western Sub-Saharan Africa</b>					
Benin	1799 (1170-2544)	4827 (3299-6612)	68.25 (44.55-96.88)	71.57 (46.93-100.05)	0.14 (0.13-0.15)
Burkina Faso	3338 (2214-4741)	7934 (5329-11145)	65.31 (42.85-93.47)	67.99 (44.23-95.99)	0.14 (0.12-0.15)
Cabo Verde	219 (145-308)	365 (242-512)	78.1 (51.43-111.42)	82.84 (54.27-117.43)	0.2 (0.18-0.22)
Cameroon	3645 (2450-5122)	11276 (7547-15760)	67.47 (43.67-96.82)	72.42 (47.33-102.2)	0.21 (0.19-0.22)
Chad	2256 (1492-3185)	5565 (3747-7787)	65.54 (43.1-93.59)	68.89 (45.23-96.67)	0.17 (0.15-0.18)
Côte d'Ivoire	3637 (2446-5060)	9782 (6641-13706)	67.77 (43.77-97.12)	71.82 (46.82-99.94)	0.19 (0.17-0.21)
Gambia	334 (221-468)	914 (609-1266)	69.53 (45.89-99.5)	72.96 (47.71-102.64)	0.16 (0.15-0.17)
Ghana	5110 (3398-7044)	13246 (8773-18468)	66.32 (42.91-93.47)	69.84 (44.56-98.15)	0.15 (0.14-0.16)
Guinea	2479 (1629-3463)	4883 (3187-6757)	66.39 (43-94.38)	69.8 (45.17-97.12)	0.15 (0.14-0.16)
Guinea-Bissau	310 (205-428)	618 (418-875)	63.47 (41.17-89.92)	67.28 (44.55-96.65)	0.2 (0.18-0.21)
Liberia	937 (614-1315)	1890 (1245-2623)	67.56 (43.78-96.39)	72.38 (47.23-101.79)	0.22 (0.22-0.23)
Mali	2989 (1985-4167)	7970 (5366-11354)	66 (41.99-93.82)	70.04 (46.14-99.45)	0.18 (0.17-0.19)
Mauritania	863 (579-1233)	1966 (1311-2751)	70.81 (46.78-99.58)	76.3 (49.65-107.17)	0.25 (0.23-0.26)
Niger	2395 (1627-3347)	7813 (5310-11067)	66.35 (43.38-94.84)	69.82 (45.84-98.36)	0.18 (0.16-0.19)
Nigeria	37265 (25062-51438)	87006 (58958-120221)	71.76 (48.87-99.94)	74.68 (50.5-103.7)	0.1 (0.08-0.12)
Sao Tome and Principe	55 (37-78)	95 (64-135)	70.87 (45.84-101.35)	76.16 (49.32-106.7)	0.23 (0.22-0.24)
Senegal	2897 (1919-4109)	6698 (4450-9333)	70.41 (46.34-99.02)	74.26 (48.14-104.01)	0.15 (0.14-0.16)
Sierra Leone	1628 (1084-2330)	3243 (2171-4526)	67.27 (44.13-96.95)	71.3 (47.28-99.77)	0.17 (0.16-0.18)
Togo	1156 (780-1609)	3076 (2068-4240)	68.03 (43.93-96.22)	71.36 (46.58-99.2)	0.14 (0.13-0.15)

<sup>1</sup> Color intensity represents value magnitude. Red indicates positive values, darker for larger. Blue indicates negative values, darker for more negative.

**Abbreviations:** YLDs, years lived with disability; ASYR, Age-standardised YLDs rate(per 100,000 population); UI, uncertainty interval; EAPC, estimated annual percentage change; CI, confidence interval; SDI, Socio-demographic Index.

