



OPEN

Association of SGLT2 inhibitors with lower incidence of death in type 2 diabetes mellitus and causes of death analysis

Mu-Chi Chung^{1,2,3,4}, Hui-Tsung Hsu⁵, Chao-Hsiang Chang⁶, Peir-Haur Hung^{7,8}, Po-Jen Hsiao⁶, Laing-You Wu⁵, Ming-Ju Wu¹, Jeng-Jer Shieh^{3,9,10} & Chi-Jung Chung^{5,11}✉

Sodium-glucose cotransporter 2 inhibitor (SGLT2i) potentially decrease all-cause and cardiovascular death, however, associations with non-cardiovascular death remain unclear. Therefore, we investigated SGLT2i associations with death and the cause of death. We used the Taiwanese National Health Institutes Research database linked to the National Register of Deaths (NRD). Incident type 2 diabetes mellitus (T2DM) patients and propensity score matched T2DM SGLT2i and Dipeptidyl peptidase 4 inhibitor (DPP4i) users were investigated. The index year was the SGLT2i or DPP4i prescription date from May 2016. Patients were followed-up until death or December 2018. Deaths verified by the NRD and grouped accordingly. Multiple Cox proportional hazards models were used. In total, 261,211 patients were included in the population; 47% of the patients were female and the average age was 62 years. The overall incidence of all-cause death was 8.67/1000 patient-years for SGLT2i and 12.41 for DPP4i users during follow-up. After adjusting for potential risk factors in the propensity score matched population, SGLT2i users were associated with lower risks of all-cause death, cardiovascular death, cancer death, and non-cancer, non-vascular death compared with DPP4i-users. For specific death causes, significantly lower death risks from heart disease, cerebrovascular disease, and accidents were associated with SGLT2i-use. SGLT2i benefits for T2DM patients were not different across subgroups. Compared with DPP4i-use, SGLT2i-use for T2DM was associated with lower disease and death risk.

Abbreviations

SGLT2i	Sodium-glucose co-transporter 2 inhibitors
T2DM	Type 2 diabetes mellitus
DPP4i	Dipeptidyl peptidase 4 inhibitors
NHRI	National Health Research Institute
GLP-1	Glucagon-like peptide-1
NHIRD	National Health Insurance Research Database

Diabetes mellitus (DM) complications pose a major global health threat¹. DM patients have a twofold risk of all-cause death when compared with other non-DM patients². The trend in all-cause death has declined considerably

¹Division of Nephrology, Department of Medicine, Taichung Veterans General Hospital, Taichung, Taiwan. ²Ph.D. Program in Translational Medicine, National Chung Hsing University, Taichung, Taiwan. ³Rong Hsing Research Center for Translational Medicine, National Chung Hsing University, Taichung, Taiwan. ⁴Department of Biotechnology, Asia University, Taichung, Taiwan. ⁵Department of Public Health, College of Public Health, China Medical University, No. 100, Sec. 1, Jingmao Rd., Beitun Dist., Taichung City 406040, Taiwan. ⁶Department of Urology, China Medical University and Hospital, Taichung, Taiwan. ⁷Department of Internal Medicine, Ditmanson Medical Foundation Chiayi Christian Hospital, Chiayi, Taiwan. ⁸Department of Applied Life Science and Health, Chia-Nan University of Pharmacy and Science, Tainan, Taiwan. ⁹Institute of Biomedical Sciences, National Chung Hsing University, Taichung, Taiwan. ¹⁰Department of Education and Research, Taichung Veterans General Hospital, Taichung, Taiwan. ¹¹Department of Medical Research, China Medical University Hospital, Taichung, Taiwan. ✉email: cjchung@mail.cmu.edu.tw

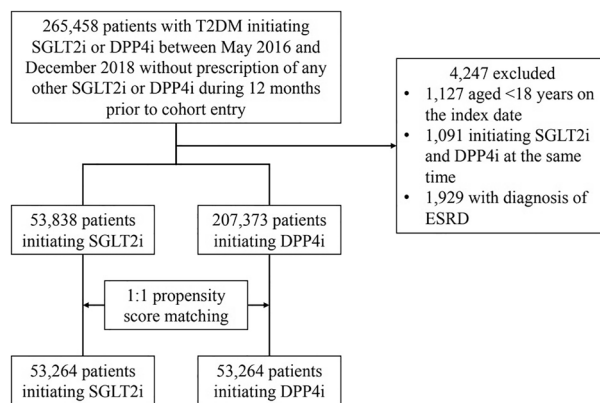


Figure 1. Flow diagram showing patient selection.

in recent decades^{3,4}, particularly for cardiovascular death. Notably, cancer and non-vascular death have accounted for the larger proportion of total deaths in DM patients in recent years^{3–5}.

Currently, Sodium-glucose Cotransporter 2 Inhibitor (SGLT2i), which reduce blood sugar levels, are highly effective in preventing diabetic kidney disease progression and cardiovascular diseases in type 2 DM (T2DM) patients. Predominantly due to cardiovascular mechanisms beyond glycemic control, SGLT2i-use facilitates significant risk reductions^{6–8} in all-cause death and cardiovascular death for patients already receiving secondary preventative medication for heart disease in large randomized clinical trials (RCTs). Survival is the primary standard end-point when investigating SGLT2i effects, however, deaths may be too low to show statistically significant effects or identify specific causes of death other than cardiovascular death in these trials. The Dapagliflozin and Prevention of Adverse Outcomes in Chronic Kidney Disease trial⁹ reported that dapagliflozin was associated with reduced non-cardiovascular death, including cancer death. Thus, large database analyses should be encouraged.

In this study, we used Taiwan's National Health Insurance (NHI) database to determine associations between SGLT2i-use and deaths when compared with Dipeptidyl peptidase 4 inhibitor (DPP4i)-use for T2DM. We further identified the causes of death using the linked National Register of Deaths. Furthermore, we investigated which patient groups could benefit from SGLT2i-use in terms of lowering death risk.

Methods

Database information. We used data from the Taiwan National Health Insurance Research Database (NHIRD). In 1995, comprehensive coverage of medical information from approximately 23 million citizens in Taiwan was established by the NHI program. All records, including outpatient care, hospital care, laboratory tests, drug prescriptions, and interventional procedures were collected for medical expense declarations. Also, Taiwan's National Health Research Institutes provided access to these databases for research purposes. Furthermore, databases were linked to the National Death Registry, where causes of death were coded according to the International Classification of Diseases, 10th Revision, Clinical Modification (ICD-10-CM). This research was approved by the China Medical University Hospital ethics committee and performed in agreement with World Medical Association Declaration of Helsinki guidelines.

Study design and participants. We established a nationwide retrospective cohort study and used de-identified secondary data from the NHIRD. All incident patients with T2DM were defined using diagnosis codes from the International Statistical Classification of Diseases, 9th and 10th Revision, Clinical Modification (ICD-9-CM and ICD-10-CM) (Supplementary Table 1). T2DM had to be diagnosed at least three times in outpatient clinics or once during hospitalization, within one year. Importantly, diagnostic accuracy was previously verified using this database¹⁰. We identified 265,458 patients with T2DM who were initially administered SGLT2i or DPP4i between May 2016 (SGLT2i release date in Taiwan) and December 2018. The index study date was defined as the first day of SGLT2i- or DPP4i-use. After excluding individuals < 18 years old and those simultaneously receiving SGLT2i and DPP4i before study entry and undergoing end stage renal disease (ESRD), 53,838 and 207,373 patients were identified as filling SGLT2i or DPP4i prescriptions, respectively, and enrolled. ESRD patients were excluded because SGLT2i is contraindicated in these patients. Furthermore, to avoid the confounding effects of baseline comorbidities and medicine-use, we performed a 1:1 propensity score matching on 53,264 pairs receiving SGLT2i or DPP4i in T2DM patients, based on age, gender, index year, comorbidities, and other medicines. A detailed study flow chart is shown (Fig. 1).

SGLT2i or DPP4i administration. SGLT2i medicines included dapagliflozin, empagliflozin, and canagliflozin. DPP4i medicines included alogliptin, linagliptin, sitagliptin, saxagliptin, and vildagliptin alone, or metformin combined pills. We collected detailed information on drug type, quantity, dose, dispensing date, and days of drug supply for both SGLT2i and/or DPP4i.

Definition of outcomes and other covariates. The incidence of overall cause of death in the propensity score matched population was a primary outcome. Deaths were verified by the National Register of Deaths. Further causes of death were determined from death certificates according to ICD-10-CM codes. Causes of death were grouped based on definitions from the U.S. National Center for Health Statistics³. All underlying causes of death were grouped into four general categories: all-cause death, cardiovascular death, cancer death, and non-cancer, non-vascular death. In addition, we also assessed death rates for the leading causes of death, including heart diseases, cerebrovascular disease, hypertension and hypertensive renal disease, DM, chronic lower respiratory diseases, nephritis, nephrotic syndrome and nephrosis, chronic liver disease, septicemia, Alzheimer's disease and Parkinson's disease, accidents, and intentional self-harm. Specific codes for causes of death are shown (Supplementary Table 2).

We compared the distribution of baseline comorbidities, and medicine prescription history between groups receiving SGLT2i or DPP4i. Comorbidities included hypertension, hyperlipidemia, cerebral vascular disease, coronary artery disease, chronic kidney disease, cancer, chronic lower respiratory diseases, chronic liver disease, Alzheimer's disease and Parkinson's disease, and mental disorders which had occurred in at least three ambulatory care visits or one inpatient care visit within one year of the index date. Except for SGLT2i or DPP4i-use, other medicines such as Glucagon-like peptide-1 (GLP-1) agonists, insulin, metformin, aspirin, angiotensin converting enzyme inhibitor/angiotensin II receptor blockers (ACEI/ARB), and statins used before the index date were adjusted in our models. All T2DM patients were followed-up until death or study end, December 31st 2018, or whichever occurred first.

Statistical analysis. Patient descriptive data were presented according to SGLT2i or DPP4i groups, and included the mean and standard deviation for continuous as well as number and frequency of categorical variables. Standardized mean differences (SMD) were calculated to compare mean differences between two groups. For propensity score matching, propensity scores were determined by multiple logistic regression analysis after adjusting for baseline covariates. SMDs with a cut-off of 0.10 were used to assess the balance of covariates between two groups in the propensity score matched population. We used Kaplan–Meier curves to plot survival curves for SGLT2i and DPP4i users. In addition, we evaluated hazard ratios (HRs) and 95% confidence intervals (CIs) of all-cause death, cardiovascular death, cancer death, and non-cancer, non-vascular death using univariate and multiple Cox proportional hazard regression models. We also performed stratification analyses by SGLT2i type, including, dapagliflozin, empagliflozin, and canagliflozin. Finally, we performed post hoc subgroup analyses using baseline comorbidities and other medication-use using multiple Cox proportional hazard regression models. Multiplicative interactions between SGLT2i-use and baseline comorbidities and other medications on all-cause death were calculated by adding cross-product terms in multiple Cox proportional hazard regression models. All other statistical analyses were conducted using SAS statistical software (SAS Institute, Cary, NC, USA). Statistical significance was defined as a two-sided $p < 0.05$ value.

Ethics approval and consent to participate. This study was approved by the Research Ethics Committee of China Medical University Hospital (CRREC-109-018). All methods were performed in accordance with World Medical Association Declaration of Helsinki guidelines.

Results

Comorbidity and medicine-use characteristics between SGLT2i and DPP4i users. In the overall population, we identified 53,838 and 207,373 patients with T2DM who had received SGLT2i and DPP4i prescriptions. SGLT2i users were younger with less female numbers when compared with DPP4i users (Table 1). Furthermore, T2DM patients receiving SGLT2i displayed higher hyperlipidemia, coronary artery disease, and were taking more GLP-1 agonists, insulin, metformin, statins, aspirin, and ACEI/ARB medications.

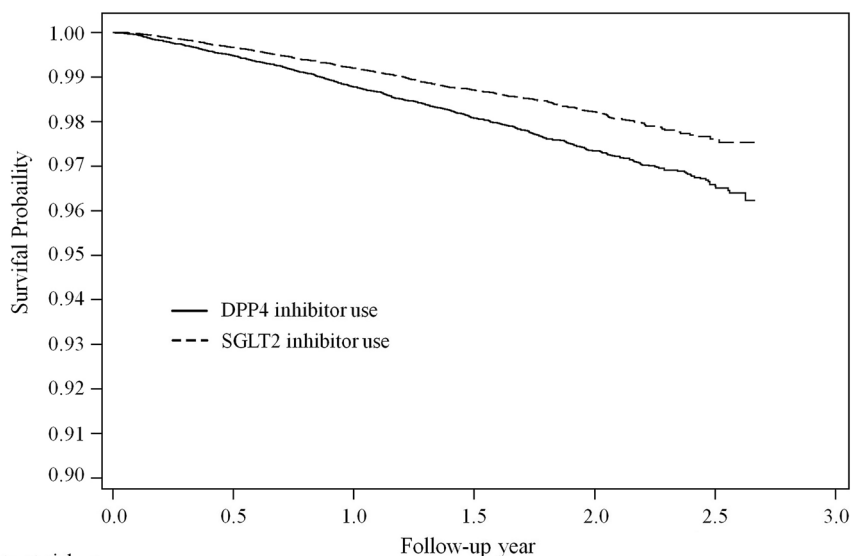
To avoid confounding issues with baseline comorbidities and medicine-use, we identified 53,264 matched pairs of SGLT2i and DPP4i users in the propensity score matched population. The mean (SD) duration from T2DM diagnosis to index date was 7.83 (5.60) years in DPP4i and 8.71 (5.64) years in SGLT2i in these population. We observed a similar distribution of age, gender, baseline comorbidities, and medication-use in both groups, as indicated by an SMD cut-off value of 0.10.

Associations between SGLT2i-use and death risk. Survival analyses during the follow-up period indicated significant differences in the all-cause death rate between SGLT2i and DPP4i users in the propensity score matched population (Fig. 2, Log-rank test p value < 0.01). The all-cause death rate in SGLT2i and DPP4i users was 8.67 and 12.41 per 1000 person-years, respectively.

From univariate Cox regression models, we observed a significant 0.70-fold (95% CI 0.63–0.78), 0.72-fold (95% CI 0.58–0.89), 0.78-fold (95% CI 0.63–0.96), and 0.66-fold (95% CI 0.57–0.77) of all-cause death, cardiovascular death, cancer death, and non-cancer, non-vascular death, respectively, in patients receiving SGLT2i compared to DPP4i (Table 2). When further adjusted by age, gender, hypertension, hyperlipidemia, cerebral vascular disease, coronary artery disease, chronic kidney disease, diabetes medications usage (GLP-1 agonist, insulin, and metformin), and other medication usages (aspirin, ACEI/ARB and statin), SGLT2i users were similarly associated with a lower risk of all-cause death, cardiovascular death, cancer death, and non-cancer, non-vascular death (HR = 0.66 for all-cause death, HR = 0.68 for cardiovascular death, HR = 0.73 for cancer death, and HR = 0.62 for non-cancer, non-vascular death). In addition, we analyzed associations between different SGLT2i medications (dapagliflozin, empagliflozin, and canagliflozin) and the risk of various death causes. Approximately 55% and 43% of SGLT2i users were receiving dapagliflozin or empagliflozin, respectively. Our data showed that SGLT2i users taking dapagliflozin or empagliflozin had significantly lower associations with the risk of all-cause death,

	All population			Propensity score matching		
	DPP4i	SGLT2i	SMD	DPP4i	SGLT2i	SMD
	N = 207,373	N = 53,838		N = 53,264	N = 53,264	
Age, Mean ± Std	62.77 ± 12.88	57.75 ± 12.27	-0.40	57.76 ± 12.43	57.87 ± 12.22	0.01
Gender (Women), N (%)	99,445 (47.95%)	23,626 (43.88%)	0.08	23,614 (44.33%)	23,396 (43.92%)	0.01
Comorbidity, N (%)						
Hypertension	24,627 (11.88%)	5076 (9.43%)	0.08	4198 (7.88%)	5013 (9.41%)	-0.05
Hyperlipidemia	136,356 (65.75%)	38,378 (71.28%)	-0.12	38,653 (72.57%)	37,951 (71.25%)	0.03
Cerebral vascular disease	4407 (2.13%)	545 (1.01%)	0.09	378 (0.71%)	544 (1.02%)	-0.03
Coronary artery disease	34,712 (16.74%)	10,823 (20.10%)	-0.09	10,034 (18.84%)	10,651 (20.00%)	-0.03
Chronic kidney disease	27,670 (13.34%)	6101 (11.33%)	0.06	5697 (10.70%)	6019 (11.30%)	-0.02
Cancer	2529 (1.22%)	347 (0.64%)	-0.06	257 (0.48%)	346 (0.65%)	0.02
Chronic lower respiratory diseases	24,323 (11.73%)	5505 (10.23%)	-0.05	5075 (9.53%)	5442 (10.22%)	0.02
Chronic liver disease	20,369 (9.82%)	5304 (9.85%)	0.00	5384 (10.11%)	5255 (9.87%)	-0.01
Alzheimer's Disease and Parkinson's disease	4546 (2.19%)	462 (0.86%)	-0.11	370 (0.69%)	461 (0.87%)	0.02
Mental disorders	41,375 (19.95%)	8797 (16.34%)	-0.09	8432 (15.83%)	8712 (16.36%)	0.01
Diabetes medications, N (%)						
GLP-1 agonist	400 (0.19%)	908 (1.69%)	-0.16	371 (0.70%)	531 (1.00%)	-0.03
Insulin	22,002 (10.61%)	10,817 (20.09%)	-0.27	9877 (18.54%)	10,392 (19.51%)	-0.02
Metformin	143,510 (69.20%)	48,260 (89.64%)	-0.52	48,052 (90.21%)	47,691 (89.54%)	0.02
Other medications, N (%)						
Statin	109,579 (52.84%)	33,274 (61.80%)	-0.18	33,155 (62.25%)	32,844 (61.66%)	0.01
Aspirin	44,784 (21.60%)	13,456 (24.99%)	-0.08	12,954 (24.32%)	13,251 (24.88%)	-0.01
ACEI/ARB	103,341 (49.83%)	29,374 (54.56%)	-0.09	28,958 (54.37%)	28,995 (54.44%)	0.00

Table 1. Clinical information of T2DM patients taking DPP4i and SGLT2i in the full cohort and the matched cohort.



Patients at risk, <i>n</i>		Follow-up year					
	0.0	0.5	1.0	1.5	2.0	2.5	3.0
DPP4i	53291	42581	30470	20355	9999	2516	0
SGLT2i	53291	42052	30801	19808	9927	1445	0

Figure 2. Survival curves for overall mortality in type 2 diabetes mellitus patients using DPP4i and SGLT2i in the propensity score matched population.

cardiovascular death, cancer death, and non-cancer, non-vascular death (all *p* values < 0.05 from multiple Cox regression models).

We also performed an association analysis for specific causes of death risk (Fig. 3). We observed a significantly lower death risk for heart diseases (HR = 0.72; 95% CI 0.56–0.92), cerebrovascular diseases (HR = 0.48;

	Events, n	Person-years	Mortality rate per 100 person-years	Crude HR (95% CI)	p value	Adjusted HR (95% CI)	p value
Deaths from all causes							
DPP4i (N = 53,264)	820	66,101.22	12.41	REF		REF	
SGLT2i (N = 53,264)	563	64,908.64	8.67	0.70 (0.63–0.78)	< 0.001	0.66 (0.59–0.74)	< 0.001
Dapagliflozin (N = 29,834)	284	36,357.31	7.81	0.63 (0.55–0.72)	< 0.001	0.65 (0.57–0.75)	< 0.001
Empagliflozin (N = 23,403)	278	28,374.46	9.8	0.80 (0.69–0.91)	< 0.001	0.67 (0.58–0.76)	< 0.001
Canagliflozin (N = 601)	1	176.87	5.65	0.62 (0.09–4.42)	0.63	0.62 (0.09–4.41)	0.63
Cardiovascular deaths							
DPP4i (N = 53,264)	205	66,101.22	3.1	REF		REF	
SGLT2i (N = 53,264)	144	64,908.64	2.22	0.72 (0.58–0.89)	0.003	0.68 (0.55–0.84)	< 0.001
Dapagliflozin (N = 29,533)	68	36,357.31	1.87	0.61 (0.46–0.80)	< 0.001	0.63 (0.48–0.84)	0.001
Empagliflozin (N = 23,136)	76	28,374.46	2.68	0.87 (0.67–1.13)	0.30	0.73 (0.56–0.95)	0.02
Canagliflozin (N = 595)	0	176.87	0	–		–	
Cancer deaths							
DPP4i (N = 53,264)	199	66,101.22	3.01	REF		REF	
SGLT2i (N = 53,264)	151	64,908.64	2.33	0.78 (0.63–0.96)	0.02	0.73 (0.59–0.90)	0.003
Dapagliflozin (N = 29,533)	81	36,357.31	2.23	0.75 (0.58–0.97)	0.03	0.76 (0.59–0.99)	0.04
Empagliflozin (N = 23,136)	69	28,374.46	2.43	0.82 (0.62–1.07)	0.15	0.68 (0.52–0.90)	0.007
Canagliflozin (N = 595)	1	176.87	5.65	3.18 (0.44–22.76)	0.25	3.24 (0.45–23.38)	0.24
Non-cancer, non-vascular deaths							
DPP4i (N = 53,264)	416	66,101.22	6.29	REF		REF	
SGLT2i (N = 53,264)	268	64,908.64	4.13	0.66 (0.57–0.77)	< 0.001	0.62 (0.53–0.72)	< 0.001
Dapagliflozin (N = 29,533)	135	36,357.31	3.71	0.59 (0.49–0.72)	< 0.001	0.61 (0.50–0.74)	< 0.001
Empagliflozin (N = 23,136)	133	28,374.46	4.69	0.75 (0.62–0.91)	0.004	0.63 (0.52–0.76)	< 0.001
Canagliflozin (N = 595)	0	176.87	0	–		–	

Table 2. Different causes of mortality risks between patients with DPP4i and with SGLT2i use in the propensity score matched population. Adjusted models were adjusted by age, gender, hypertension, hyperlipidemia, cerebral vascular disease, coronary artery disease, chronic kidney disease, diabetes medications usage (GLP-1 agonist, insulin, and metformin), and other medication usages (aspirin, ACEI/ARB and statin).

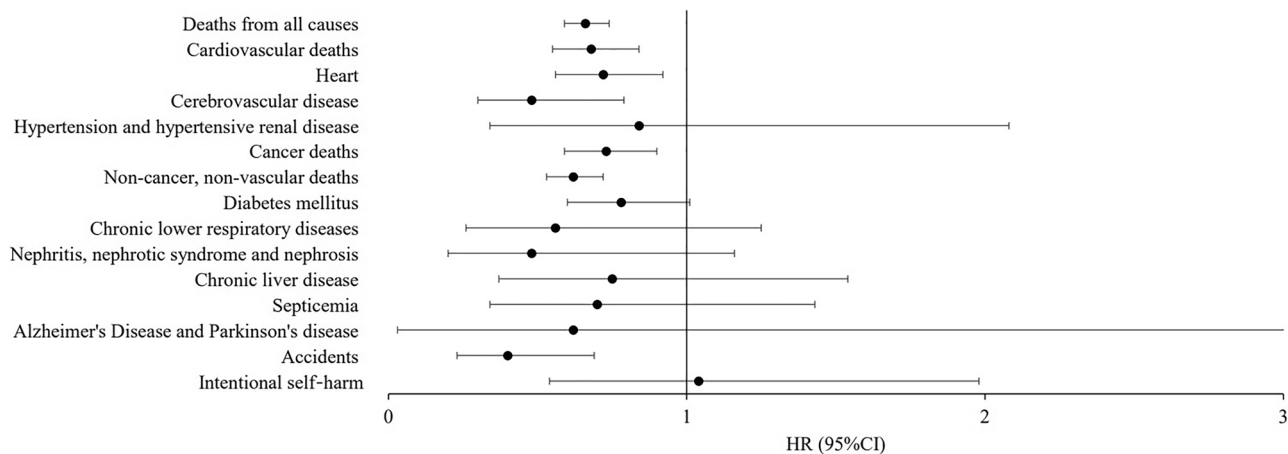


Figure 3. Death risks in type 2 diabetes mellitus patients prescribed SGLT2i versus DPP4i, according to specific causes of death.

95% CI 0.30–0.79), and accidents (HR = 0.40; 95% CI 0.23–0.69) with SGLT2i in the propensity score matched population.

Finally, post hoc subgroup analyses and interaction analyses of various comorbidities and other medicines and SGLT2i-use on death risk were performed (Supplementary Fig. 1). SGLT2i users were mostly associated with a lower risk of all-cause death in post hoc subgroup analyses for age, sex, baseline comorbidities, and medication use. Among characteristics, statistical interactions were identified between SGLT2i-use and patients receiving ACEI/ARB for all-cause death risk (interaction $p = 0.02$). This suggested that associations between SGLT2i-use with overall death risk were affected by ACEI/ARB-use. SGLT2i was associated with lower death risk in non-users of ACEI/ARB-based treatments at baseline than ACEI/ARB users. Other comorbidities and medicine-use did not statistically interact with SGLT2i-use for all-cause death risk (all $p > 0.05$). Thus, SGLT2i benefits in T2DM patients in terms of lowered death risks were not different across subgroups. We did not perform other subgroup analyses for specific causes of death risk because of the limited number of deaths.

Discussion

In this study, SGLT2i-use in T2DM was significantly associated with a decreased risk of death when compared with DPP4i-use in a national cohort in Taiwan. After adjusting for potential confounders using propensity score matching, a significantly lower risk for all-cause death of 34% with SGLT2i-use was identified. In addition to cardiovascular death, SGLT2i-use was also associated with a lower risk for cancer death and non-cancer, non-vascular death. The benefits of SGLT2i-use for a lower death risk were not different across subgroups.

Our study indicated an association between SGLT2i-use and a lower risk of all-cause death in a real-world database, in agreement with data from RCTs^{6–8}. Other population-based studies^{11,12} also showed a reduced risk of all-cause death for SGLT2i therapy when compared with other glucose-lowering drugs. Here, we chose DPP4i as a comparator because all DPP4i-types displayed neutral effects toward all-cause death or cardiovascular death¹³. Survival is the most important clinical endpoint when conducting a new medicine trial¹⁴. Similarly, death prevention is one of the most important public health outcomes of any treatment or preventative intervention type. Therefore, the association of SGLT2i-use with decreased risk of death should be emphasized in clinical settings.

Several factors likely accounted for the low death incidence rate during SGLT2i-use. SGLT2i-use was previously shown to exert beneficial effects toward cardiovascular death¹³. From a previous meta-analysis, SGLT2i appeared to mitigate 15% of cardiovascular death and 11% of myocardial infarctions¹³. In our study, we observed a 32% lower risk of cardiovascular death with SGLT2i-use, including a 28% lower risk of death from heart disease and 52% lower risk from cerebrovascular disease. SGLT2i heart benefits may be due to multiple mechanisms beyond glycemic control¹⁵. A recent study reported that SGLT2i was associated with a significant reduction in hemorrhagic stroke¹⁶. Furthermore, an animal study indicated that SGLT2i generated protective effects after acute ischemic stroke by suppressing inflammation and oxidative stress¹⁷.

We observed a 0.73-fold decreased risk of cancer death in patients receiving SGLT2i. In a previous study, the relative risk reduction for cancer death was 58% with dapagliflozin⁹. Diabetes is associated with an increased risk of cancer incidence and death¹⁸, and cancer deaths become as the leading cause of diabetes-related deaths in recent years⁴. In a previous RCT, SGLT2i was not associated with risk of all-cancer incidence¹⁹. However, a recent study indicated a benefit of SGLT2i in suppressing cell growth²⁰. SGLT2i was also added to standard cancer therapies in human studies^{21,22}, and currently, clinical trials investigating SGLT2i safety and efficacy in cancer treatment are underway²⁰. These informative studies suggest SGLT2i antitumor abilities should be thoroughly investigated in further comprehensive studies.

Our study is the first to indicate associations between SGLT2i-use and a lower risk of non-cancer, non-vascular death. It was surprising that SGLT2i-use was associated with decreased death from accidents. In previous work, SGLT2i improved life quality, including pain, mental health, and general health perceptions²³. Because poor functional status was considered a predictor of future-fall risk²⁴, SGLT2i possibly reduced accidents by improving life quality and functional status. We observed the tendency that SGLT2i-use benefits for a lower death risk from multiple diseases, despite insignificance. Increasing evidence has indicated that SGLT2i exerts protective effects on nephritis, nephrotic syndrome and nephrosis²⁵, chronic liver disease²⁶, and septicemia survival²⁷. SGLT2i-use also demonstrated consistent heart and kidney protective effects in patients with obstructive sleep apnea²⁸ and chronic obstructive pulmonary disease²⁹.

Subgroup analyses of baseline characteristics suggested SGLT2i protective effects were not different across subgroups. Our findings agreed with previous studies showing that dapagliflozin reduced the risk of death across a broad spectrum of age³⁰, heart failure³¹, and metformin-use³². The reduction of all-cause death was considered a class effect between different SGLT2i types in previous research³³, and we demonstrated consistent protective effects of empagliflozin and dapagliflozin toward cancer death and non-cancer, non-vascular death. One exception was that this study indicated protection effect of SGLT2i was less in ACEI/ARB users than non-users (interaction $p < 0.05$). Fortunately, a beneficial association between SGLT2i-use and a lower risk of death was significant in ACEI/ARB users.

Our study data were strengthened by the large sample size and nationwide scope covering >99% of 23 million Taiwanese citizens. By using a national cohort study linked to the National Register of Deaths, we precisely studied death in SGLT2i-users, and causes of death based on ICD-10-CM codes. Furthermore, we grouped specific causes of death based on clear definitions from the National Center for Health Statistics³. However, our study was also limited in some respects. Firstly, the finding that fewer deaths due to cancer had occurred in SGLT2i-users should be cautiously interpreted; our study was not primarily designed to survey cancer deaths, and many potential confounding factors were not considered. Secondly, a cause of death report is formulated by medical opinion and subjective judgment; thus, potential misclassifications cannot be ruled out. Thirdly, SGLT2i-use was approved in 2016 in Taiwan; therefore, the outcome observation period was short. In addition, the decreased

sample size and event rate were in the analysis of specific cause of death, which would not have had much power to detect differences. Next, it is unclear what the accident specifically indicates and its association with SGLT2i needed further study to explore it. Lastly, detailed laboratory values (e.g. HbA1C levels) were not included in the NHI database, potentially influencing study outcomes. Further studies with longer follow-up times and higher patient numbers are warranted.

Conclusions

In T2DM patients, we identified an association between SGLT2i and a lower risk of death when compared with DPP4i-use. The potential beneficial effects of SGLT2i on cancer death and non-cancer, non-vascular death must be comprehensively investigated in future studies.

Data availability

The data that support the findings of this study are available from the Taiwan National Health Insurance Research Database (NHIRD) but restrictions apply to the availability of these data, which were used under license for the current study, and so are not publicly available. Any detail for data requests can be through the NHIRD (<http://nhird.nhri.org.tw>).

Received: 25 March 2022; Accepted: 27 May 2022

Published online: 16 June 2022

References

- Zheng, Y., Ley, S. H. & Hu, F. B. Global aetiology and epidemiology of type 2 diabetes mellitus and its complications. *Nat. Rev. Endocrinol.* **14**, 88–98 (2018).
- Yang, J. J. *et al.* Association of diabetes with all-cause and cause-specific mortality in asia: A pooled analysis of more than 1 million participants. *JAMA Netw. Open* **2**, e192696 (2019).
- Gregg, E. W. *et al.* Trends in cause-specific mortality among adults with and without diagnosed diabetes in the USA: An epidemiological analysis of linked national survey and vital statistics data. *Lancet* **391**, 2430–2440 (2018).
- Pearson-Stuttard, J. *et al.* Trends in predominant causes of death in individuals with and without diabetes in England from 2001 to 2018: An epidemiological analysis of linked primary care records. *Lancet Diabetes Endocrinol.* **9**, 165–173 (2021).
- Tsunekawa, S., Kamiya, H. & Nakamura, J. Different trends in causes of death in patients with diabetes between Japan and the USA. *J. Diabetes Investig.* **10**, 571–573 (2019).
- Heerspink, H. J. L. *et al.* Dapagliflozin in patients with chronic kidney disease. *N. Engl. J. Med.* **383**, 1436–1446 (2020).
- McMurray, J. J. V. *et al.* Dapagliflozin in patients with heart failure and reduced ejection fraction. *N. Engl. J. Med.* **381**, 1995–2008 (2019).
- Zinman, B. *et al.* Empagliflozin, cardiovascular outcomes, and mortality in type 2 diabetes. *N. Engl. J. Med.* **373**, 2117–2128 (2015).
- Heerspink, H. J. L. *et al.* Effects of dapagliflozin on mortality in patients with chronic kidney disease: A pre-specified analysis from the DAPA-CKD randomized controlled trial. *Eur. Heart J.* **42**, 1216–1227 (2021).
- Lin, C. C., Lai, M. S., Syu, C. Y., Chang, S. C. & Tseng, F. Y. Accuracy of diabetes diagnosis in health insurance claims data in Taiwan. *J. Formos Med. Assoc.* **104**, 157–163 (2005).
- Kosiborod, M. *et al.* Lower risk of heart failure and death in patients initiated on sodium-glucose cotransporter-2 inhibitors versus other glucose-lowering drugs: The CVD-REAL Study (comparative effectiveness of cardiovascular outcomes in new users of sodium-glucose cotransporter-2 inhibitors). *Circulation* **136**, 249–259 (2017).
- Koh, E. S. *et al.* Renal outcomes and all-cause death associated with sodium-glucose co-transporter-2 inhibitors versus other glucose-lowering drugs (CVD-REAL 3 Korea). *Diabetes Obes. Metab.* **23**, 455–466 (2021).
- Schubert, M., Hansen, S., Leefmann, J. & Guan, K. Repurposing antidiabetic drugs for cardiovascular disease. *Front. Physiol.* **11**, 1168 (2020).
- Sherman, M. Design and endpoints of clinical trials. *Curr. Future Dig. Dis. Sci.* **64**, 1050–1057 (2019).
- Inzucchi, S. E. *et al.* How does empagliflozin reduce cardiovascular mortality? Insights from a mediation analysis of the EMPA-REG OUTCOME trial. *Diabetes Care* **41**, 356–363 (2018).
- Tsai, W. H. *et al.* Effects of SGLT2 inhibitors on stroke and its subtypes in patients with type 2 diabetes: A systematic review and meta-analysis. *Sci. Rep.* **11**, 15364 (2021).
- Al Hamed, F. A. & Elewa, H. Potential therapeutic effects of sodium glucose-linked cotransporter 2 inhibitors in stroke. *Clin. Ther.* **42**, e242–e249 (2020).
- Ling, S. *et al.* Association of type 2 diabetes with cancer: A meta-analysis with bias analysis for unmeasured confounding in 151 cohorts comprising 32 million people. *Diabetes Care* **43**, 2313–2322 (2020).
- Dicembrini, I., Nreu, B., Mannucci, E. & Monami, M. Sodium-glucose co-transporter-2 (SGLT-2) inhibitors and cancer: A meta-analysis of randomized controlled trials. *Diabetes Obes. Metab.* **21**, 1871–1877 (2019).
- K. T. K. Lau *et al.* Repurposing sodium-glucose co-transporter 2 inhibitors (SGLT2i) for cancer treatment—A review. *Rev. Endocr. Metab. Disord.* (2021).
- Kawaguchi, T. *et al.* Spontaneous regression of hepatocellular carcinoma with reduction in angiogenesis-related cytokines after treatment with sodium-glucose cotransporter 2 inhibitor in a cirrhotic patient with diabetes mellitus. *Hepatol Res.* **49**, 479–486 (2019).
- Okada, J. *et al.* Sodium glucose cotransporter 2 inhibition combined with cetuximab significantly reduced tumor size and carcinoembryonic antigen level in colon cancer metastatic to liver. *Clin. Colorectal. Cancer* **17**, e45–e48 (2018).
- Sahin, S. *et al.* Does treatment with sodium-glucose co-transporter-2 inhibitors have an effect on sleep quality, quality of life, and anxiety levels in people with type 2 diabetes mellitus?. *Turk. J. Med. Sci.* **51**, 735–742 (2020).
- Lusardi, M. M. *et al.* Determining risk of falls in community dwelling older adults: A systematic review and meta-analysis using posttest probability. *J. Geriatr. Phys. Ther.* **40**, 1–36 (2017).
- Tuttle, K. R. *et al.* SGLT2 inhibition for CKD and cardiovascular disease in type 2 diabetes: Report of a scientific workshop sponsored by the National Kidney Foundation. *Am. J. Kidney Dis.* **77**, 94–109 (2021).
- Yanai, H., Hakoshima, M., Adachi, H. & Katsuyama, H. Multi-organ protective effects of sodium glucose cotransporter 2 inhibitors. *Int. J. Mol. Sci.* **22**, 4416 (2021).
- Maayah, Z. H., Ferdaoussi, M., Takahara, S., Soni, S. & Dyck, J. R. B. Empagliflozin suppresses inflammation and protects against acute septal renal injury. *Inflammopharmacology* **29**, 269–279 (2021).
- Neeland, I. J. *et al.* The impact of empagliflozin on obstructive sleep apnea and cardiovascular and renal outcomes: An exploratory analysis of the EMPA-REG OUTCOME trial. *Diabetes Care* **43**, 3007–3015 (2020).

29. Dewan, P. *et al.* Effects of dapagliflozin in heart failure with reduced ejection fraction and chronic obstructive pulmonary disease: An analysis of DAPA-HF. *Eur. J. Heart Fail.* **23**, 632–643 (2021).
30. Monteiro, P. *et al.* Efficacy and safety of empagliflozin in older patients in the EMPA-REG OUTCOME(R) trial. *Age Ageing* **48**, 859–866 (2019).
31. Salah, H. M. *et al.* Effects of sodium-glucose cotransporter 1 and 2 inhibitors on cardiovascular and kidney outcomes in type 2 diabetes: A meta-analysis update. *Am. Heart J.* **233**, 86–91 (2021).
32. Neuen, B. L. *et al.* Sodium-glucose co-transporter-2 inhibitors with and without metformin: A meta-analysis of cardiovascular, kidney and mortality outcomes. *Diabetes Obes. Metab.* **23**, 382–390 (2021).
33. Silverii, G. A., Monami, M. & Mannucci, E. Sodium-glucose co-transporter-2 inhibitors and all-cause mortality: A meta-analysis of randomized controlled trials. *Diabetes Obes. Metab.* **23**, 1052–1056 (2021).

Author contributions

M.C.C., H.T.H., C.H.C., P.H.H., P.J.H., L.Y.W., M.J.W., J.J.S., and C.J.C. designed the research. M.C.C., L.Y.W., and C.J.C. analyzed and interpreted the data. M.C.C. and C.J.C. wrote the first draft of the paper. All authors participated in revising the paper.

Funding

This study was partly supported by grants from China Medical University Hospital (CMU108-MF-94), Ditman-son Medical Foundation Chiayi Christian Hospital (R110-029) and the Ministry of Science and Technology of Taiwan under grant no. MOST 108-2221-E-039-009-MY3. Funders had no role in the design and conduct of this study; collection, management, analysis, and interpretation of data; preparation, review, or approval of the manuscript; and the decision to submit the manuscript for publication.

Competing interests

The authors declare no competing interests.

Additional information

Supplementary Information The online version contains supplementary material available at <https://doi.org/10.1038/s41598-022-13760-7>.

Correspondence and requests for materials should be addressed to C.-J.C.

Reprints and permissions information is available at www.nature.com/reprints.

Publisher's note Springer Nature remains neutral with regard to jurisdictional claims in published maps and institutional affiliations.



Open Access This article is licensed under a Creative Commons Attribution 4.0 International License, which permits use, sharing, adaptation, distribution and reproduction in any medium or format, as long as you give appropriate credit to the original author(s) and the source, provide a link to the Creative Commons licence, and indicate if changes were made. The images or other third party material in this article are included in the article's Creative Commons licence, unless indicated otherwise in a credit line to the material. If material is not included in the article's Creative Commons licence and your intended use is not permitted by statutory regulation or exceeds the permitted use, you will need to obtain permission directly from the copyright holder. To view a copy of this licence, visit <http://creativecommons.org/licenses/by/4.0/>.

© The Author(s) 2022