

**ARTICLE**

# Antihypertensive Effect of Milk Fermented by *Lactiplantibacillus plantarum* K79 on Spontaneously Hypertensive Rats

 Sang-Dong Lim<sup>1,\*</sup>, Kyungwon Lee<sup>1</sup>, Taewon Han<sup>1</sup>, Hyunjhong Jhun<sup>1</sup>, Ah-Ram Han<sup>1</sup>, Yongjin Hwang<sup>2</sup>, and Sangpil Hong<sup>1</sup>
<sup>1</sup>Korea Food Research Institute, Wanju 55365, Korea

<sup>2</sup>Novalacto Co., Ltd., Daejeon 34016, Korea

 OPEN ACCESS

**Received** September 6, 2023

**Revised** October 16, 2023

**Accepted** October 17, 2023

\*Corresponding author : Sang-Dong Lim  
 Korea Food Research Institute, Wanju 55365,  
 Korea  
 Tel: +82-63-219-9082  
 Fax: +82-63-219-9288  
 E-mail: [limsd@kfri.re.kr](mailto:limsd@kfri.re.kr)

**\*ORCID**

Sang-Dong Lim  
<https://orcid.org/0000-0002-1500-4413>  
 Kyungwon Lee  
<https://orcid.org/0009-0007-9404-4811>  
 Taewon Han  
<https://orcid.org/0009-0002-7700-1960>  
 Hyunjhong Jhun  
<https://orcid.org/0000-0002-3694-9715>  
 Ah-Ram Han  
<https://orcid.org/0000-0001-7111-7095>  
 Yongjin Hwang  
<https://orcid.org/0009-0001-3168-8587>  
 Sangpil Hong  
<https://orcid.org/0000-0002-4060-0129>

**Abstract** The aim of this study is to investigate whether milk fermented by *Lactiplantibacillus plantarum* K79, which exhibits angiotensin-converting enzyme inhibitory activity, has an effect on lowering the blood pressure of hypertensive rats and to investigate biomarker changes in their blood. Experimental group: normal group (NG, Wistar-Kyoto rats): distilled water, control group [NCG, spontaneously hypertensive rats (SHR)]: distilled water, high treatment group (HTG, SHR): 500 mg/kg/day, medium treatment group (SHR): 335 mg/kg/day, low treatment group (SHR): 170 mg/kg/day, positive control group (PCG, SHR): Enalapril, 10 mg/kg/day. The experimental animals used in this study were divided into groups composed of 8 animals. In terms of weight change, a significant difference was observed between the NG and the SHR group, but there was no significant difference between the SHR group. After 8 wk of feeding, blood pressure was lowered more significantly in the HTG (209.9±13.3 mmHg) than in the NCG (230.8±7.3 mmHg). The treatment group has an effect of lowering blood pressure by significantly suppressing blood pressure-related biomarker protein expression than NG. The results obtained can be used as an antihypertensive material in a variety of food raw materials.

**Keywords** fermented milk, hypertension, *Lactiplantibacillus plantarum*, spontaneously hypertensive rats, angiotensin converting enzyme

## Introduction

Hypertension is a risk factor in the development of cardiovascular diseases such as coronary artery disease, left ventricular hypertrophy, valvular heart disease, atrial fibrillation, stroke, and arrhythmias such as renal failure. Without timely diagnosis and appropriate treatment, it can cause illness or death (Farooq and Ray, 2015; Kjeldsen, 2018). It is estimated that 1.4 billion people worldwide suffer from hypertension, but only 14% have it under control (WHO, 2021). Angiotensin I converting enzyme plays an important physiological role in regulating blood pressure through the renin-

angiotensin system (RAS; Lee et al., 2004). It can convert angiotensin I to angiotensin II, and can also inactivate the vasodilator bradykinin (Yang et al., 1970; Yang et al., 1971). Therefore, inhibiting the angiotensin-converting enzyme (ACE) reduces the activity of angiotensin II, although it can also lower blood pressure by increasing bradykinin levels (Pyo and Lee, 2007).

ACE inhibitory activity is considered an effective way to treat hypertension. Synthetic ACE inhibitors such as Captopril, Alacepril, Lisinopril, and Enalapril are currently being used to treat hypertension, but they have undesirable side effects such as dysgeusia, rash, coughing, hypotension, renal failure, and hyperkalemia (Brown and Vaughan, 1998; Chakraborty and Roy, 2021; Xia et al., 2020). In contrast, naturally occurring ACE inhibitors are considered safe (Chen et al., 2022). To date, ACE inhibitors have been found in fermented milk (Rendón-Rosales et al., 2022), fish surimi (Oh et al., 2020), rabbit meat (Chen et al., 2022), and abalone viscera (Iwamoto et al., 2023), and ACE inhibitory peptides have been isolated from these foods and other sources. ACE inhibitory peptides derived from milk proteins are produced by enzymatic hydrolysis, microbial fermentation or genetic engineering (Castellano et al., 2013). In particular, many lactic acid bacteria produce ACE inhibitory peptides, such as Val-Pro-Pro- and Ile-Pro-Pro, from fermented milk (Hirota et al., 2007; Mizushima et al., 2004). Bioactive peptides derived from fermented milk by *Lactobacillus helveticus* have been reported to decrease the blood pressure of spontaneously hypertensive rats (SHR; Narva et al., 2004). In addition, ACE inhibitory peptides derived from the enzymatic hydrolysis of milk protein have been observed to decrease blood pressure in hypertensive mice (Ramchandran and Shah, 2011; Wang et al., 2012). The aim of this study was to investigate whether pasteurized fermented milk by *Lactiplantibacillus plantarum* K79, which exhibits ACE inhibitory activity, has an effect on lowering blood pressure in hypertensive rats and to investigate biomarker changes in their blood.

## Materials and Methods

### Lactic acid bacteria

*L. plantarum* K79 was isolated from kimchi. This strain was selected after screening it for probiotic properties such as acid and bile tolerance, antibacterial activity, antibiotic tolerance and ACE inhibitory activity. The culture was maintained in an MRS broth (Difco, New York, NY, USA), and the patent accession number is KACC 81222BP.

### Sample preparation

Skim milk powder (13.5%) and 1% glucose were mixed, sterilized at 90°C for 5 min, and then cooled to 37°C. At this time, lyophilized *L. plantarum* K79 strain activated for 1 h was inoculated and cultured with stirring at 37°C until the pH reached 4.2. The culture was heat-treated by stirring at 85°C for 20 min, cooled to below 50°C, and then spray-dried and powdered. The powdered raw materials were suspended and used for testing.

### Animals and treatment

The experiment included control groups composed of 5-wk-old SHR (SLC, Tokyo, Japan) male rats, and normal groups (NGs) composed of Wistar-Kyoto rats (WKY), which were used after 1 wk of acclimatization. The experimental animals were fed with the AIN-93G diet, and during the acclimatization period the filtered drinking water was changed every day so that it could be consumed freely. During the breeding period, the temperature was 23±1°C, humidity was 50±5%, noise was less than 60 phones, lighting time was 08:00–20:00 (12 h a day), illuminance was 150–300 Lux, ventilation was 10–12 times

per hour. This experiment was conducted with the approval of the Korea Food Research Institute (KFRI-M-22024) in compliance with the regulations on animal experimentation ethics. During the breeding period, the experimental animals were fed with regular solid feed (Samtako, Osan, Korea), and their blood pressure was measured at the end of the acclimatization period. Individual identification was indicated.

Experimental group: NG (WKY): distilled water, control group (SHR): distilled water, high treatment group (HTG; SHR): 500 mg/kg/day, medium treatment group (SHR): 335 mg/kg/day, low treatment group (SHR): 170 mg/kg/day, positive control group (PCG; SHR): Enalapril, 10 mg/kg/day. Each group used in the experiment consisted of 8 animals. At this time, the oral administration method, which is the clinical application route of this formulation, was selected and each sample was directly administered into the stomach of each experimental animal.

### **Measurement of body weight, feed intake, and blood pressure**

All the experimental animals were weighed once per week before the start of administration, after the start of administration, and until the end of the test. For each breeding box, the total amount of feeding and watering on the day and the remaining amount the next day were measured once per week for 4 wk after the start of administration, and the amount of daily consumption was indicated for each group. The systolic pressure of each rat was measured with a tail cuff blood pressure meter (INDIR, Model LE5002, Panlab, Barcelona, Spain), and was maintained at 32°C for 30 min to detect the pulse of each rat's tail artery before measurement.

### **Analysis of blood serum and organ weight**

At the end of the 10-wk experimental period, blood samples were collected from all the rats and immediately placed in sterile tubes. Serum was collected by centrifugation at 2,000×g for 15 min at 4°C. The serum samples were then analyzed for total cholesterol (TC), triglyceride (TG) concentration, high density lipoprotein (HDL) cholesterol, and low density lipoprotein (LDL) cholesterol by GCCL (Yongin, Korea). Also, the liver, kidneys, lungs, heart and testes of the rats were quickly isolated after sacrifice and weighed.

### **Blood pressure-related biomarkers**

The angiotensinogen (AGT) protein expression, angiotensin II protein, and renin protein content in the plasma were measured using a Rat AGT ELISA kit, a Rat Angiotensin II ELISA kit, and a Rat Renin ELISA kit (MyBioSource, San Diego, CA, USA), respectively.

### **Protein expression in the kidney**

According to the method of Averill et al. (2003), kidney tissue was left in 4% formalin for 48 h before being transferred to 70% ethanol. Blocks of cardiac tissue were imbedded in paraffin; 5 µm sections were transferred to slides and the paraffin was removed by sequential washes with xylene, 100% ethanol, 95% ethanol, 75% ethanol, and double-distilled water. Sections of tissue were incubated with 3% hydrogen peroxide for 5 min, washed with PBS (pH 7.2), dried, and then incubated with 5% normal goat serum for 1 h at room temperature. The sections were washed with PBS and incubated overnight at 4°C with an affinity-purified rabbit polyclonal antibody to angiotensin-1 at 1:25 dilution of the antibody in 1% BSA. The Angiotensin-1 antibody was purified. The next day, the tissues were washed with PBS and incubated for 3 h at 4°C

with a biotinylated anti-rabbit antibody at a dilution of 1:400 in 1% BSA. The slides were rinsed with PBS, blotted dry, and reacted immunocytochemically by avidin-biotin solution and stained brown with 3,3'-diaminobenzidine (Sigma-Aldrich, St. Louis, MO, USA) in Tris buffered saline (0.05 mol/L, pH 7.6 to 7.7). The reaction was stopped in PBS, and the sections were rinsed in double-distilled water before being counterstained with hematoxylin (Sigma-Aldrich). The tissue sections were dehydrated in ethanol (70% to 100%) and then HistoClear (National Diagnostics, Atlanta, GA, USA). Finally, they were mounted under coverslips with Histomount.

### Statistical analysis

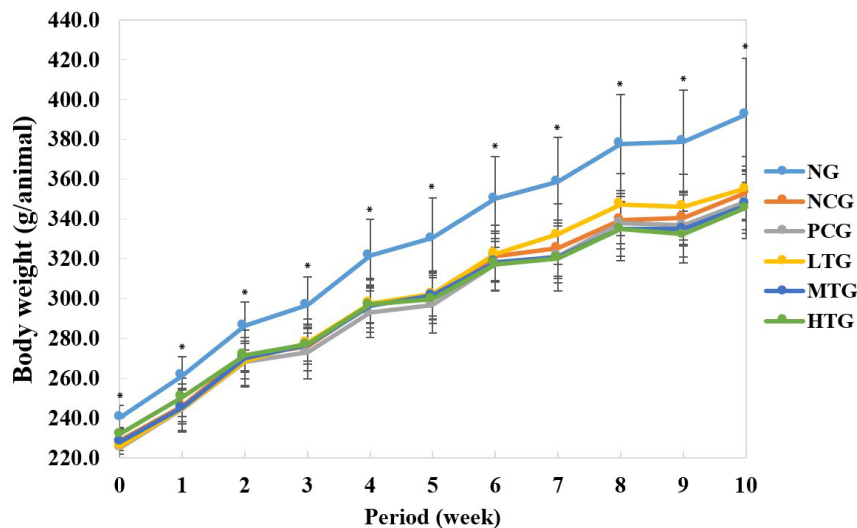
The results are expressed as the mean $\pm$ SD per experimental group using SPSS version 23 (IBM, Armonk, NY, USA). The significance of the differences was analyzed by conducting a one-way analysis of variance (ANOVA) using Duncan's multiple range tests. Significance was considered at  $p < 0.05$ .

## Results and Discussion

### Change of body weight, feed intake, and blood pressure

Looking at the change in weight according to the experimental period, there was a significant difference between the NG (WKY), which was fed with distilled water, and the hypertensive rat (SHR) group within the same period (Fig. 1). This was found to be consistent with Gattone's (1986) report that WKY had a similar weight to SHR at birth, but that its weight became greater than that of SHR over time. However, there was no significant difference in average body weight between the treatment group and the control group, indicating that milk fermented by *L. plantarum* K79 used in the experiment did not have a significant effect on the weight of the rats.

There was a slight difference in intake, but no significant change was observed, indicating that the fermented milk



**Fig. 1.** Change in body weight of SHR fed with experimental diet (g/rat) for 10 wk. All values are the mean $\pm$ SD (n=8). \* In the same column are significantly different from NG and the other group ( $p < 0.05$ ). NG, normal group (WKY) with distilled water; NCG, negative control group (SHR) with distilled water; PCG, positive control group (SHR) with Enalapril; LTG, low treatment group (SHR); MTG, medium treatment group (SHR); HTG, high treatment group (SHR); WKY, Wistar-Kyoto rats; SHR, spontaneously hypertensive rats.

containing *L. plantarum* K79 had nothing to do with the weight gain of the rats. However, at 7 wk of feeding, the low-treatment group showed a significant increase compared to the normal and medium, high-treatment groups (Table 1).

The results of measuring the blood pressure according to the experimental period showed that there was a significant change in blood pressure in the NG, followed by the PCG, treatment group, and negative control group (NCG), until 10 wk. When comparing the treatment group and the NCG, the treatment group showed a tendency to lower blood pressure until 6 wk, but it was found that there was no significance (Table 2). However, after 8 wk, blood pressure was lowered more significantly in the HTG (209.9±13.3 mmHg) than in the NCG (230.8±7.3 mmHg). Ishiguro et al. (2012) reported that systolic blood pressure (SBP) and diastolic blood pressure were reduced by more than 30 mmHg and 20 mmHg, respectively, after oral administration of purified sweet potato protein hydrolyses to SHR. Tsai et al. (2006) found that the SBP of SHR decreased by 19 mmHg after 8 wk of oral administration of fermented soymilk with lactic acid bacteria. These results were similar to the results obtained in this study. According to Alshuniaber et al. (2021) and Yuan et al. (2022), this drop of blood pressure in rats is related to inflammation and could be obtained by inhibiting the ACE activity of the RAS.

**Table 1. Change of feed intake in SHR fed with experimental diets (g/rat) for 10 wk**

Variable	1	2	3	4	5	6	7	8	9	10
NG	38.8±2.5 <sup>NSa</sup>	36.5±2.3 <sup>NSa</sup>	36.4±2.4 <sup>NSa</sup>	37.3±2.9 <sup>NSa</sup>	38.4±1.9 <sup>NSa</sup>	38.2±2.3 <sup>NSa</sup>	38.5±2.0 <sup>Ba</sup>	38.9±2.1 <sup>NSa</sup>	38.3±2.3 <sup>NSa</sup>	39.0±3.5 <sup>NSa</sup>
NCG	39.0±1.2 <sup>abc</sup>	38.6±1.0 <sup>abc</sup>	37.5±1.1 <sup>c</sup>	38.0±0.8 <sup>bc</sup>	39.6±1.3 <sup>ab</sup>	40.1±2.0 <sup>a</sup>	40.7±1.7 <sup>ABa</sup>	38.8±1.1 <sup>abc</sup>	40.6±1.2 <sup>a</sup>	39.3±0.9 <sup>abc</sup>
PCG	40.2±1.4 <sup>a</sup>	37.0±1.8 <sup>b</sup>	38.0±1.6 <sup>ab</sup>	37.7±1.0 <sup>ab</sup>	38.9±1.7 <sup>ab</sup>	38.7±1.1 <sup>ab</sup>	39.9±1.9 <sup>ABab</sup>	39.1±2.2 <sup>ab</sup>	40.1±2.2 <sup>a</sup>	39.0±2.1 <sup>ab</sup>
LTG	40.7±1.9 <sup>ab</sup>	38.6±2.5 <sup>b</sup>	37.6±2.5 <sup>b</sup>	38.2±1.8 <sup>b</sup>	38.7±1.9 <sup>b</sup>	40.3±2.2 <sup>ab</sup>	42.8±2.9 <sup>Aa</sup>	39.6±2.1 <sup>ab</sup>	40.8±1.9 <sup>ab</sup>	39.0±1.8 <sup>b</sup>
MTG	39.6±2.1 <sup>a</sup>	38.6±2.2 <sup>a</sup>	37.6±1.6 <sup>a</sup>	38.2±0.7 <sup>a</sup>	38.2±0.9 <sup>a</sup>	38.5±1.4 <sup>a</sup>	39.2±1.7 <sup>Ba</sup>	38.3±2.5 <sup>a</sup>	39.5±2.8 <sup>a</sup>	39.4±2.6 <sup>a</sup>
HTG	40.2±1.4 <sup>a</sup>	37.5±0.8 <sup>b</sup>	37.5±0.9 <sup>b</sup>	38.1±1.6 <sup>ab</sup>	38.3±1.0 <sup>ab</sup>	38.0±1.4 <sup>b</sup>	37.9±1.0 <sup>Bb</sup>	37.8±1.5 <sup>b</sup>	38.8±0.7 <sup>ab</sup>	38.1±2.3 <sup>ab</sup>

All values are the mean±SD (n=4).

<sup>NS</sup> Values in the column are not significantly different (p<0.05).

<sup>A,B</sup> In the same column are significantly different (p<0.05).

<sup>a-c</sup> In the same row are significantly different (p<0.05).

SHR, spontaneously hypertensive rats; NG, normal group (WKY) with distilled water; NCG, negative control group (SHR) with distilled water; PCG, positive control group (SHR) with Enalapril; LTG, low treatment group (SHR); MTG, medium treatment group (SHR); HTG, high treatment group (SHR); WKY, Wistar-Kyoto rats.

**Table 2. Changes in the systolic blood pressure of rats for 10 wk (unit: mmHg)**

Variable	0	2	4	6	8	10
NG	138.0±16.9 <sup>a</sup>	143.3±12.7 <sup>a</sup>	144.1±9.2 <sup>a</sup>	143.0±9.7 <sup>a</sup>	153.0±10.0 <sup>a</sup>	152.0±6.1 <sup>a</sup>
NCG	179.8±16.9 <sup>b</sup>	203.6±6.7 <sup>d</sup>	214.0±10.8 <sup>c</sup>	222.5±6.4 <sup>c</sup>	230.8±7.3 <sup>d</sup>	240.6±4.0 <sup>d</sup>
PCG	179.8±19.0 <sup>b</sup>	174.8±11.9 <sup>b</sup>	184.0±20.6 <sup>b</sup>	181.0±13.1 <sup>b</sup>	183.1±23.5 <sup>b</sup>	187.6±12.8 <sup>b</sup>
LTG	181.0±9.0 <sup>b</sup>	190.1±18.2 <sup>c</sup>	204.0±13.5 <sup>c</sup>	212.3±11.1 <sup>c</sup>	214.6±16.0 <sup>cd</sup>	230.0±13.4 <sup>cd</sup>
MTG	183.5±17.3 <sup>b</sup>	193.5±7.3 <sup>cd</sup>	203.6±12.1 <sup>c</sup>	216.3±9.6 <sup>c</sup>	216.8±8.8 <sup>cd</sup>	227.0±15.5 <sup>cd</sup>
HTG	182.9±13.1 <sup>b</sup>	192.8±10.1 <sup>cd</sup>	211.3±8.3 <sup>c</sup>	212.5±11.3 <sup>c</sup>	209.9±13.3 <sup>c</sup>	222.7±10.1 <sup>c</sup>

All values are the mean±SD (n=8).

<sup>a-d</sup> The same column are significantly different (p<0.05).

NG, normal group (WKY) with distilled water; NCG, negative control group (SHR) with distilled water; PCG, positive control group (SHR) with Enalapril; LTG, low treatment group (SHR); MTG, medium treatment group (SHR); HTG, high treatment group (SHR); WKY, Wistar-Kyoto rats; SHR, spontaneously hypertensive rats.

### Change of blood serum and organ weight

Regarding blood lipids, TC, HDL cholesterol and LDL cholesterol were all significantly higher in the NG than in the hypertensive rat group, while TG was significantly lower in the NG (Table 3). This finding was consistent with the report of Cho et al. (2018), who observed that the SHR group had lower TC and HDL-C levels than the WKY group. Among the blood pressure rat groups, TC and LDL cholesterol were slightly higher in the medium-dose treatment group, but the levels of HDL cholesterol and TG were insignificant.

When examining the weight of each organ of the SHR euthanized 10 wk after administration of the fermented product, the weight of the liver in the PCG was found to be significantly higher than that in the NG, while the weight of the kidneys was significantly lower in the NG than in the other groups (Table 4). There was no significant change in the weight in the lungs of all groups, and the weight of the heart was significantly higher in the NCG and the treatment group than in the PCG and the NG. The organs of the NG weigh less than those of the other groups, but the testes weigh significantly more. This was consistent with the report by Walter and Hamet (1986) that the heart, kidneys and liver weighed less in WKY than in SHR.

### Change of blood pressure-related biomarkers

As is well known, Ang II is produced systematically. AGT, a substrate of RAS, is released by the liver and broken down in

**Table 3. Blood serum levels in rats after 10 wk**

Variable	TC (mg/dL)	HDL (mg/dL)	LDL (mg/dL)	TG (mg/dL)
NG	144.4±4.8 <sup>a</sup>	101.5±7.8 <sup>a</sup>	22.8±2.1 <sup>a</sup>	54.9±12.2 <sup>b</sup>
NCG	90.8±5.1 <sup>bc</sup>	59.5±3.8 <sup>b</sup>	13.0±0.5 <sup>c</sup>	119.4±19.1 <sup>a</sup>
PCG	88.1±5.6 <sup>c</sup>	59.1±4.4 <sup>b</sup>	12.9±1.8 <sup>c</sup>	122.0±15.6 <sup>a</sup>
LTG	89.9±5.5 <sup>bc</sup>	60.1±4.2 <sup>b</sup>	12.9±0.6 <sup>c</sup>	134.1±25.1 <sup>a</sup>
MTG	94.1±4.3 <sup>b</sup>	60.9±4.1 <sup>b</sup>	15.0±2.7 <sup>b</sup>	104.8±47.3 <sup>a</sup>
HTG	88.1±5.7 <sup>c</sup>	58.4±4.7 <sup>b</sup>	13.4±1.3 <sup>bc</sup>	105.5±24.3 <sup>a</sup>

All values are the mean±SD (n=8).

<sup>a-c</sup> In the same column are significantly different (p<0.05).

TC, total cholesterol; HDL, high-density lipoprotein; LDL, low-density lipoprotein; TG, triglyceride; NG, normal group (WKY) with distilled water; NCG, negative control group (SHR) with distilled water; PCG, positive control group (SHR) with Enalapril; LTG, low treatment group (SHR); MTG, medium treatment group (SHR); HTG, high treatment group (SHR); WKY, Wistar-Kyoto rats; SHR, spontaneously hypertensive rats.

**Table 4. Organ weight in rat after 10 wk (g/rat)**

Variable	Liver	Kidneys	Lungs	Heart	Testes
NG	11.80±1.13 <sup>b</sup>	2.37±0.17 <sup>b</sup>	1.36±0.14 <sup>a</sup>	1.07±0.09 <sup>c</sup>	3.27±0.21 <sup>a</sup>
NCG	13.03±0.29 <sup>ab</sup>	2.58±0.08 <sup>a</sup>	1.52±0.20 <sup>a</sup>	1.39±0.04 <sup>a</sup>	2.93±0.13 <sup>b</sup>
PCG	13.15±0.59 <sup>a</sup>	2.58±0.08 <sup>a</sup>	1.39±0.11 <sup>a</sup>	1.26±0.04 <sup>b</sup>	2.96±0.09 <sup>b</sup>
LTG	12.97±1.10 <sup>ab</sup>	2.59±0.15 <sup>a</sup>	1.43±0.08 <sup>a</sup>	1.40±0.08 <sup>a</sup>	2.90±0.15 <sup>b</sup>
MTG	12.34±1.02 <sup>ab</sup>	2.56±0.16 <sup>a</sup>	1.55±0.23 <sup>a</sup>	1.35±0.06 <sup>a</sup>	2.84±0.09 <sup>b</sup>
HTG	12.43±0.86 <sup>ab</sup>	2.54±0.13 <sup>a</sup>	1.38±0.09 <sup>a</sup>	1.37±0.05 <sup>a</sup>	2.89±0.18 <sup>b</sup>

All values are the mean±SD (n=8).

<sup>a-c</sup> In the same column are significantly different (p<0.05).

NG, normal group (WKY) with distilled water; NCG, negative control group (SHR) with distilled water; PCG, positive control group (SHR) with Enalapril; LTG, low treatment group (SHR); MTG, medium treatment group (SHR); HTG, high treatment group (SHR); WKY, Wistar-Kyoto rats; SHR, spontaneously hypertensive rats.

the circulation to form Ang I by renin secreted by the proximal glomerular apparatus of the kidneys. Vasodilator I (Ang I) is then readily activated, and Ang II is caused by ACE, which is expressed at high levels primarily on the surface of endothelial cells in the pulmonary circulation. When the concentration of these biomarkers increases, it affects the increase in blood pressure (Ichihara et al., 2004; Yim and Yoo, 2008). Table 5 shows changes in blood pressure-related biomarkers in the plasma of rats after 10 wk. It was confirmed that the NG, PCG, and HTG had significantly lower AGT protein expression than the NCG. Angiotensin-II showed significantly lower expression in the NG, PCG, and treated groups than in the NCG. Renin also was expressed the least in NG compared to NCG, followed by PCG and HTG. Therefore, it is judged that significantly suppressing blood pressure-related biomarker protein expression had the effect of lowering the blood pressure of the treatment group.

### Angiotensin-I protein expression in the kidney

Human angiotensin is expressed in the tissues of diverse organs including those of the liver, heart, blood vessel walls, brain, and kidneys, and in adipose tissue. Although all organ systems have certain components of the RAS, the kidneys have all the components of the RAS, and also show compartmentalization and intracellular accumulation of tubular and interstitial networks (Kobori et al., 2007)

Fig. 2 shows the results of an experiment confirming the expression of angiotensin-I using immunohistochemistry. Looking at the intrarenal glomeruli, it was found that the protein expression of angiotensin-I in the hypertensive rats fed only with distilled water, i.e. the NCG, was increased to a visually observable level compared to the normal rats, the PCG, and the treatment group. Therefore, it was observed that suppressing the protein expression of angiotensin-I had an antihypertensive effect on the treated group.

## Conclusion

The aim of this study was to investigate whether pasteurized milk fermented by *L. plantarum* K79, which exhibited ACE inhibitory activity, has the effect on lowering the blood pressure of hypertensive rats and to investigate biomarker changes in their blood. The reduction in blood pressure was significant up to 10 wk in the following order: NG, PCG, treatment group, and NCG. After 8 wk, the blood pressure of HTG was significantly lower than that of NCG. The treatment group has an

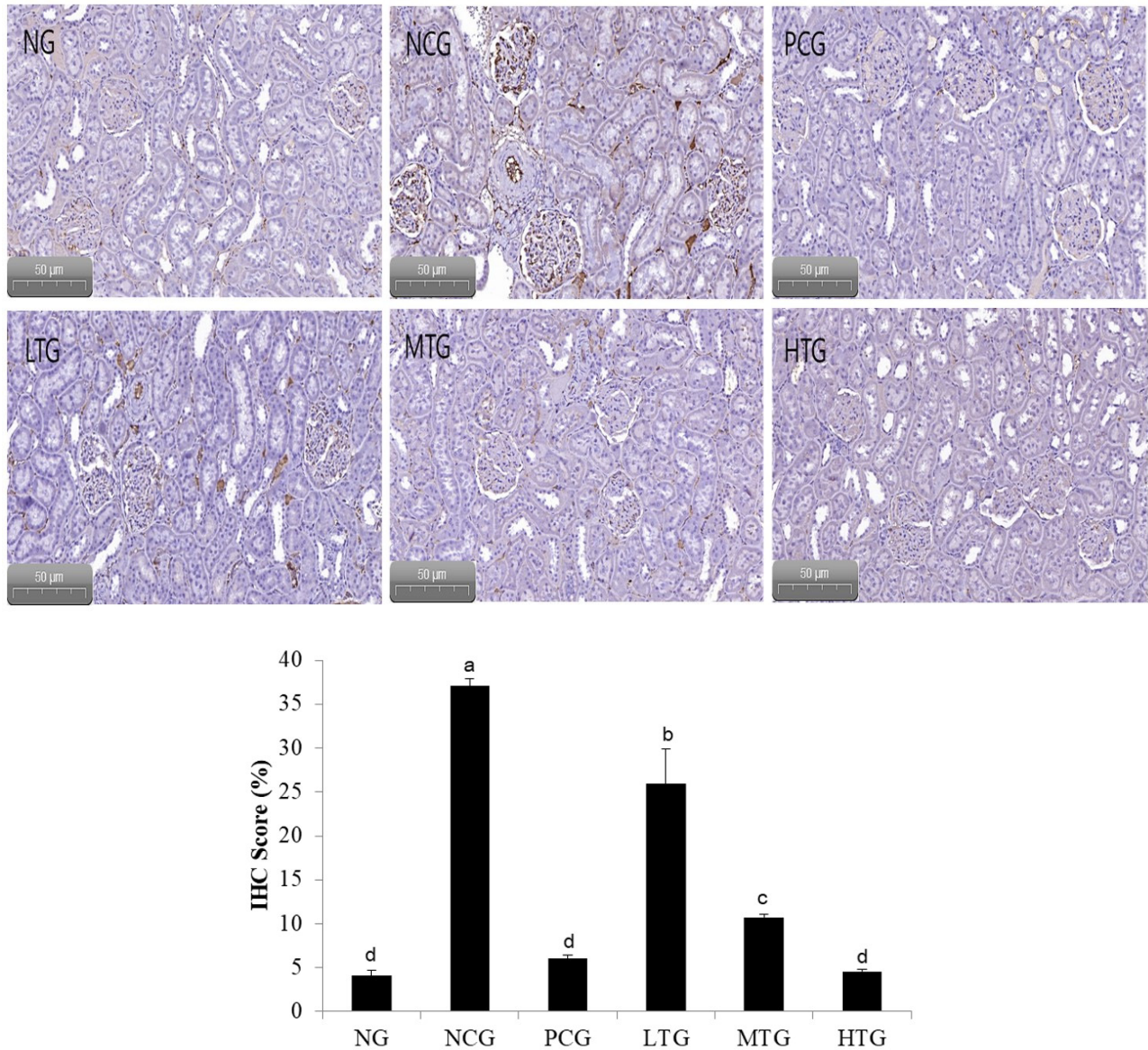
**Table 5.** Change of blood pressure-related biomarkers in the blood plasma of rats after 10 wk

Variable	Angiotensinogen (ng/mL)	Angiotensin-II (pg/mL)	Renin (pg/mL)
NG	18.3±1.7 <sup>a</sup>	5.8±1.5 <sup>a</sup>	153.6±23.7 <sup>a</sup>
NCG	28.1±2.3 <sup>c</sup>	13.4±1.0 <sup>c</sup>	204.8±15.5 <sup>d</sup>
PCG	21.6±1.9 <sup>ab</sup>	8.4±1.9 <sup>b</sup>	175.2±12.0 <sup>b</sup>
LTG	24.6±3.8 <sup>bc</sup>	10.0±0.7 <sup>b</sup>	194.7±18.0 <sup>cd</sup>
MTG	23.9±3.3 <sup>bc</sup>	9.1±1.7 <sup>b</sup>	180.4±11.5 <sup>bc</sup>
HTG	21.7±1.7 <sup>ab</sup>	8.7±1.7 <sup>b</sup>	177.5±11.4 <sup>b</sup>

All values are the mean±SD (n=8).

<sup>a-d</sup> In the same column are significantly different (p<0.05).

NG, normal group (WKY) with distilled water; NCG, negative control group (SHR) with distilled water; PCG, positive control group (SHR) with Enalapril; LTG, low treatment group (SHR); MTG, medium treatment group (SHR); HTG, high treatment group (SHR); WKY, Wistar-Kyoto rats; SHR, spontaneously hypertensive rats.



**Fig. 2.** Experiment to confirm the expression of angiotensin-1 protein stained brown with 3,3'-diaminobenzidine in rat kidneys. Data are expressed as mean $\pm$ SD. <sup>a-d</sup> In the same column are significantly different ( $p < 0.05$ ). Tissue sections were selected for the measurement of staining areas using ImageJ (bar=50  $\mu$ m). NG, normal group (WKY) with distilled water; NCG, negative control group (SHR) with distilled water; PCG, positive control group (SHR) with Enalapril; LTG, low treatment group (SHR); MTG, medium treatment group (SHR); HTG, high treatment group (SHR); IHC, immunohistochemistry; WKY, Wistar-Kyoto rats; SHR, spontaneously hypertensive rats.

effect of lowering blood pressure by significantly suppressing blood pressure-related biomarker protein expression than NG. The protein expression of angiotensin-I in the kidney of hypertensive rats fed only with distilled water, i.e. the NCG, was increased to a visually observable level compared to the other groups. Therefore, the results of this study suggest that the fermented product by *L. plantarum* K79 can be applied as an antihypertensive material.

## Conflicts of Interest

The authors declare no potential conflicts of interest.



## Acknowledgements

This work was supported by the Korea Institute of Planning and Evaluation for Technology in Food, Agriculture, and Forestry (IPET) through the Technology Commercialization Support Program (No. 821028-03) funded by the Ministry of Agriculture, Food and Rural Affairs (MAFRA).

## Author Contributions

Conceptualization: Lim SD. Data curation: Jhun H, Hong S. Formal analysis: Lee K, Han T, Han AR. Methodology: Jhun H. Software: Han AR. Hong S. Validation: Hong S. Investigation: Hwang Y. Writing - original draft: Lim SD. Writing - review & editing: Lim SD, Lee K, Han T, Jhun H, Han AR, Hwang Y, Hong S.

## Ethics Approval

The Committee on the Ethics of Animal Experiments of the Korea Food Research Institute has approved the animal experiments undertaken for the purposes of this study (KFRI-M-22024).

## References

- Alshuniaber M, Alhaj O, Abdallah Q, Jahrami H. 2021. Effects of camel milk hydrolysate on blood pressure and biochemical parameters in fructose-induced hypertensive rats. *Nutr Food Sci* 52:292-307.
- Averill DB, Ishiyama Y, Chappell MC, Ferrario CM. 2003. Cardiac angiotensin-(1-7) in ischemic cardiomyopathy. *Circulation* 108:2141-2146.
- Brown NJ, Vaughan DE. 1998. Angiotensin-converting enzyme inhibitors. *Circulation* 97:1411-1420.
- Castellano P, Aristoy MC, Sentandreu MÁ, Vignolo G, Toldrá F. 2013. Peptides with angiotensin I converting enzyme (ACE) inhibitory activity generated from porcine skeletal muscle proteins by the action of meat-borne *Lactobacillus*. *J Proteomics* 89:183-190.
- Chakraborty R, Roy S. 2021. Angiotensin-converting enzyme inhibitors from plants: A review of their diversity, modes of action, prospects, and concerns in the management of diabetes-centric complications. *J Integr Med* 19:478-492.
- Chen J, Yu X, Chen Q, Wu Q, He Q. 2022. Screening and mechanisms of novel angiotensin-I-converting enzyme inhibitory peptides from rabbit meat proteins: A combined *in silico* and *in vitro* study. *Food Chem* 370:131070.
- Cho KH, Yadav D, Kim SJ, Kim JR. 2018. Blood pressure lowering effect of Cuban policosanol is accompanied by improvement of hepatic inflammation, lipoprotein profile, and HDL quality in spontaneously hypertensive rats. *Molecules* 23:1080.
- Farooq U, Ray SG. 2015. 2014 Guideline for the management of high blood pressure (eighth joint national committee): Take-home messages. *Med Clin N Am* 99:733-738.
- Gattone VH II. 1986. Body weight of the spontaneously hypertensive rat during the suckling and weanling period. *Jpn Heart J* 27:881-884.
- Hirota T, Ohki K, Kawagishi R, Kajimoto Y, Mizuno S, Nakamura Y, Kitakaze M. 2007. Casein hydrolysate containing the antihypertensive tripeptides Val-Pro-Pro and Ile-Pro-Pro improves vascular endothelial function independent of blood

- pressure-lowering effects: Contribution of the inhibitory action of angiotensin-converting enzyme. *Hypertens Res* 30: 489-496.
- Ichihara A, Kobori H, Nishiyama A, Navar LG. 2004. Renal renin-angiotensin system. *Contrib Nephrol* 143:117-130.
- Ishiguro K, Sameshima Y, Kume T, Ikeda K, Matsumoto J, Yoshimoto M. 2012. Hypotensive effect of a sweetpotato protein digest in spontaneously hypertensive rats and purification of angiotensin I-converting enzyme inhibitory peptides. *Food Chem* 3:774-779.
- Iwamoto N, Sasaki A, Maizawa T, Hamada-Sato N. 2023. Abalone viscera fermented with *Aspergillus oryzae* 001 prevents pressure elevation by inhibiting angiotensin converting enzyme. *Nutrients* 15:947.
- Kjeldsen SE. 2018. Hypertension and cardiovascular risk: General aspects. *Pharmacol Res* 129:95-99.
- Kobori H, Nangaku M, Navar LG, Nishiyama A. 2007. The intrarenal renin-angiotensin system: From physiology to the pathobiology of hypertension and kidney disease. *Pharmacol Rev* 59:251-287.
- Lee DH, Kim JH, Park JS, Choi YJ, Lee JS. 2004. Isolation and characterization of a novel angiotensin I-converting enzyme inhibitory peptide derived from the edible mushroom *Tricholoma giganteum*. *Peptides* 25:621-627.
- Mizushima S, Ohshige K, Watanabe J, Kimura M, Kadowaki T, Nakamura Y, Tochikubo O, Ueshima H. 2004. Randomized controlled trial of sour milk on blood pressure in borderline hypertensive men. *Am J Hypertens* 17:701-706.
- Narva M, Collin M, Jauhiainen T, Vapaatalo H, Korpela R. 2004. Effects of *Lactobacillus helveticus* fermented milk and its bioactive peptides on bone parameters in spontaneously hypertensive rats. *Milchwissenschaft* 59:359-363.
- Oh JY, Je JG, Lee HG, Kim EA, Kang SI, Lee JS, Jeon YJ. 2020. Anti-hypertensive activity of novel peptides identified from olive flounder (*Paralichthys olivaceus*) surimi. *Foods* 9:647.
- Pyo YH, Lee TC. 2007. The potential antioxidant capacity and angiotensin I-converting enzyme inhibitory activity of monascus-fermented soybean extracts: Evaluation of monascus-fermented soybean extracts as multifunctional food additives. *J Food Sci* 72:S218-S223.
- Ramchandran L, Shah NP. 2011. Yogurt can beneficially affect blood contributors of cardiovascular health status in hypertensive rats. *J Food Sci* 76:H131-H136.
- Rendón-Rosales MÁ, Torres-Llanez MJ, Mazorra-Manzano MA, González-Córdova AF, Hernández-Mendoza A, Vallejo-Cordoba B. 2022. *In vitro* and *in silico* evaluation of multifunctional properties of bioactive synthetic peptides identified in milk fermented with *Lactococcus lactis* NRRL B-50571 and NRRL B-50572. *LWT-Food Sci Technol* 154:112581.
- Tsai JS, Lin YS, Pan BS, Chen TJ. 2006. Antihypertensive peptide and  $\gamma$ -aminobutyric acid from prozyme 6 facilitated lactic acid bacteria fermentation of soymilk. *Process Biochem* 41:1282-1288.
- Walter SV, Hamet P. 1986. Enhanced DNA synthesis in heart and kidney of newborn spontaneously hypertensive rats. *Hypertension* 8:520-525.
- Wang X, Wang L, Cheng X, Zhou J, Tang X, Mao XY. 2012. Hypertension-attenuating effect of whey protein hydrolysate on spontaneously hypertensive rats. *Food Chem* 134:122-126.
- World Health Organization [WHO]. 2021. Guideline for the pharmacological treatment of hypertension in adults. WHO, Geneva, Switzerland. p 1.
- Xia Y, Yu J, Xu W, Shuang Q. 2020. Purification and characterization of angiotensin-I-converting enzyme inhibitory peptides isolated from whey proteins of milk fermented with *Lactobacillus plantarum* QS670. *J Dairy Sci* 103:4919-4928.
- Yang HYT, Erdös EG, Levin Y. 1970. A dipeptidyl carboxypeptidase that converts angiotensin I and inactivates bradykinin. *Biochim Biophys Acta* 214:374-376.

- Yang HYT, Erdős EO, Levin Y. 1971. Characterization of a dipeptide hydrolase (kininase II: angiotensin I converting enzyme). *J Pharmacol Exp Ther* 177:291-300.
- Yim HE, Yoo KH. 2008. Renin-angiotensin system: Considerations for hypertension and kidney. *Electrolyte Blood Press* 6:42-50.
- Yuan L, Li Y, Chen M, Xue L, Wang J, Ding Y, Zhang J, Wu S, Ye Q, Zhang S, Yang R, Zhao H, Wu L, Liang T, Xie X, Wu Q. 2022. Antihypertensive activity of milk fermented by *Lactiplantibacillus plantarum* SR37-3 and SR61-2 in L-NAME-induced hypertensive rats. *Foods* 11:2332.