


RESEARCH ARTICLE

A seasonal pulse of ungulate neonates influences space use by carnivores in a multi-predator, multi-prey system

Joel Ruprecht¹  | Tavis D. Forrester² | Nathan J. Jackson³ | Darren A. Clark² | Michael J. Wisdom⁴ | Mary M. Rowland⁴ | Joshua B. Smith² | Kelley M. Stewart³ | Taal Levi¹

¹Department of Fisheries, Wildlife, and Conservation Sciences, Oregon State University, Corvallis, Oregon, USA

²Oregon Department of Fish and Wildlife, La Grande, Oregon, USA

³Department of Natural Resources and Environmental Science, University of Nevada, Reno, Reno, Nevada, USA

⁴US Department of Agriculture Forest Service Pacific Northwest Research Station, La Grande, Oregon, USA

Correspondence

Joel Ruprecht, Department of Fisheries, Wildlife, and Conservation Sciences, Oregon State University, Corvallis, OR, USA.

Email: ruprechtjoel@gmail.com

Funding information

The Wildlife and Sport Fish Restoration Act

Abstract

The behavioral mechanisms by which predators encounter prey are poorly resolved. In particular, the extent to which predators engage in active search for prey versus incidentally encountering them has not been well studied in many systems and particularly not for neonate prey during the birth pulse. Parturition of many large herbivores occurs during a short and predictable temporal window in which young are highly vulnerable to predation. Our study aims to determine how a suite of carnivores responds to the seasonal pulse of newborn ungulates using contemporaneous global positioning system (GPS) locations of four species of predators and two species of prey. We used step-selection functions to assess whether coyotes, cougars, black bears, and bobcats encountered parturient adult female ungulates more often than expected by chance in a low-density population of mule deer and a high-density population of elk. We then assessed whether the carnivore species that encountered parturient prey more often than expected by chance did so by shifting their habitat use toward areas with a high probability of encountering neonates. None of the four carnivore species encountered GPS-collared parturient mule deer more often than expected by chance. By contrast, we determined that cougar and male bear movements positioned them in the proximity of GPS-collared parturient elk more often than expected by chance which may provide evidence of searching behavior. Although both male bears and cougars exhibited behavior consistent with active search for neonates, only male bears used elk parturition habitat in a way that dynamically tracked the phenology of the elk birth pulse suggesting that maximizing encounters with juvenile elk was a motivation when selecting resources. Our results suggest that there is high interspecific and intersexual variability in foraging strategies among large mammalian predators and their prey.

KEYWORDS

carnivore, large herbivore, opportunistic encounter, parturition, prey, resource pulse, search behavior, step selection function

This is an open access article under the terms of the [Creative Commons Attribution](https://creativecommons.org/licenses/by/4.0/) License, which permits use, distribution and reproduction in any medium, provided the original work is properly cited.

© 2022 The Authors. *Ecology and Evolution* published by John Wiley & Sons Ltd.

1 | INTRODUCTION

Although the distinction between active search and incidental encounter of prey is key to understanding predator–prey dynamics, whether, and under what conditions predators actively search for particular prey species has not been described in many systems. Diet breadth theory suggests that predators seeking to maximize their rate of energy acquisition should have a more generalist prey profile until the encounter rate with the most profitable prey item crosses a critical threshold that makes it suboptimal to include less profitable prey in their diet (MacArthur & Pianka, 1966; Figure 1; Text S1). Diet specialization on abundant prey is necessarily associated with active search for that prey, but as the density of the focal prey species declines, additional species enter the diet which reduces the rate of acquisition of the focal prey. A switch from active search for a prey species at high density to incidental encounter of the same species at low density can have stabilizing effects on prey population dynamics (Murdoch, 1969) and results in the canonical sigmoid Type

III functional response that is associated with many of the most interesting dynamics in predator–prey systems including alternative stable states, bifurcations, and predator pits (Holling, 1959; Levi et al., 2015; Messier, 1994).

The density-dependent response of predators that is evidence for active search can be found by observing disproportionate predation relative to availability. Seminal works on search behavior using direct observations of predators and prey indicated that encounter rates and prey selection did not occur proportional to availability of prey for African lions (*Panthera leo*; Scheel, 1993) and wild dogs (*Lycaon pictus*; Creel & Creel, 2002) suggesting some prey species were searched for and others were not. Further, rate-maximizing models of energetic intake explained prey selection in these studies reasonably well, although the risk of injury from prey somewhat confounded predictions (Creel & Creel, 2002; Scheel, 1993). However, in many systems, prey densities vary predictably within a year due to a birth pulse that provides a uniquely vulnerable life stage for predators that would not subject predators to the same risk of injury as

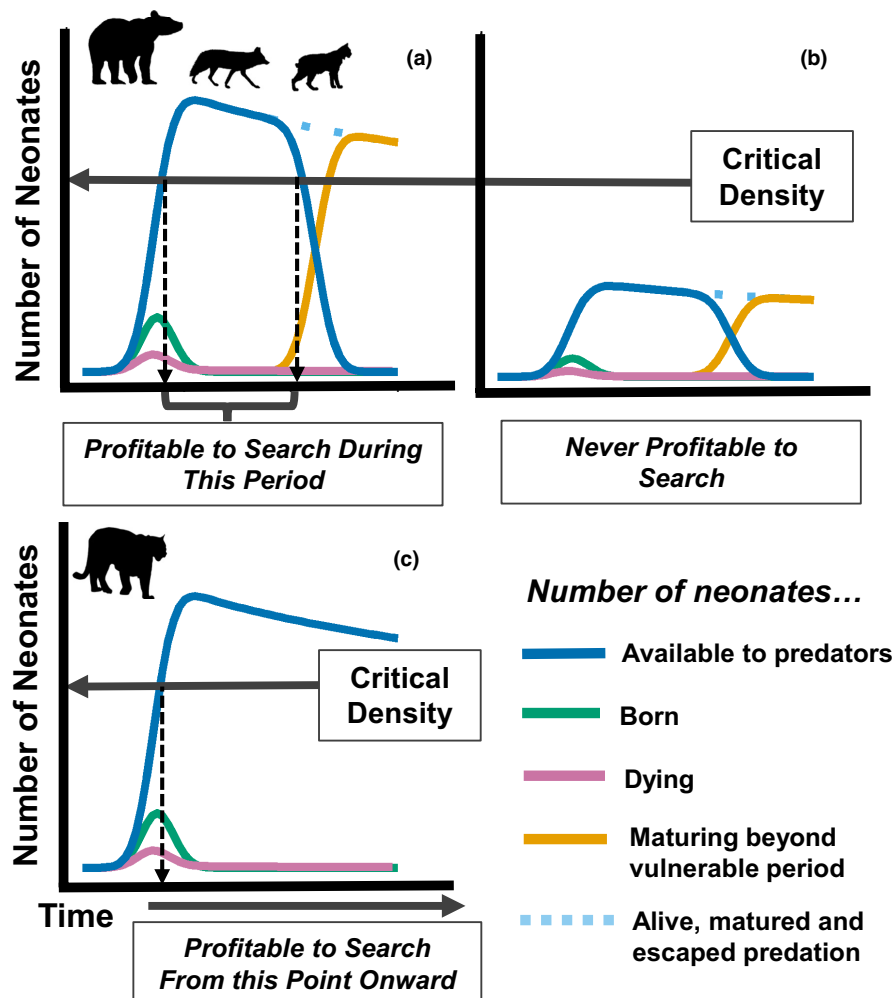


FIGURE 1 Conceptual diagram showing birth pulse phenology and the profitability of predator search behavior. Panels (a) and (b) are representative of species that can only successfully capture neonates during a limited time period (e.g., bears, coyotes, bobcats), beyond which neonates mature to the point where they have escaped the majority of predation. Panel (a) represents a population with a high density of neonates; the period in which the number of neonates available (blue line) exceeds the critical density is the period when active search is profitable. Panel (b) represents a population with a low density of neonates that never exceeds the critical density such that actively searching is never the optimal strategy. Panel (c) represents species that can capture juvenile ungulates throughout their entire first year of life (and beyond; e.g., cougars), such that it is profitable to search as soon as the critical density has been exceeded.

larger prey. A classic case of this phenomenon is the seasonal pulse of songbird nests (Schmidt et al., 2001; Vigallon & Marzluff, 2005), and both active search (Pelech et al., 2010) and incidental encounter (Schmidt, 2004) strategies have been documented and vary as a function of nest density, vulnerability, and maternal vigilance (Schmidt, 1999). In addition to songbirds, large herbivore systems worldwide feature a predictable birth pulse of neonates that are vulnerable to predators across a wide body size gradient. Although mortality of ungulate neonates has been studied extensively (Linnell et al., 1995), and predatory search behavior has been well addressed with respect to adult prey (Creel & Creel, 2002; Scheel, 1993), it is still largely unknown whether, and under what conditions predators engage in active search behavior of neonate young during the birth pulse, which has important implications for prey population dynamics.

The propensity of carnivores to target neonates likely depends on factors intrinsic to both the predator and prey. For predators, this may vary by body size, hunting proficiency or mode, and ability to cope with maternal defense by the large herbivore. For example, ungulate neonates are highly vulnerable to predation immediately following parturition from a suite of carnivores, but quickly become sufficiently vagile to elude those that are less predaceous or of smaller body size. Thus, species such as bears and many meso-predators experience a particularly short resource pulse of neonates (Griffin et al., 2011; Linnell et al., 1995; Zager & Beecham, 2006; Figure 1a,b). In contrast, the birth pulse may be less consequential to the largest felids and canids that can efficiently capture large-bodied ungulates throughout the first year of life and beyond (Figure 1c). Even within a species, the response of predators to the ungulate birth pulse may vary by individual or sex as has been shown in bears (Jacoby et al., 1999; Rayl et al., 2015; Zager & Beecham, 2006).

Because predatory behavior during the ungulate birth pulse is influenced by idiosyncratic combinations of factors intrinsic to both predators and prey, studies involving multiple carnivore and multiple ungulate species will be needed to elucidate the generality of search behavior. Previous research has largely focused on identifying spatial shifts in habitat use by bears (but see Bastille-Rousseau et al., 2016; Svoboda et al., 2019) toward birthing grounds or areas on the landscape more likely to contain neonates, which has resulted in different conclusions wherein both active search (Rayl et al., 2018) and incidental encounter (Bastille-Rousseau et al., 2011; Bowersock et al., 2021) were inferred. Much stronger inference is possible using analytical methods that utilize spatiotemporal encounters between individual predators and individual prey from contemporaneous global positioning system (GPS) telemetry data. Further, identifying general conditions associated with incidental encounter and active search requires relocation data on multiple species of predators and prey across gradients in body size, abundance, and life histories.

Here we use contemporaneous GPS tracking data at the level of encounters between individual predators and individual prey to assess whether carnivores exhibit behavior suggestive of active search of ungulate neonates in a multi-predator, multi-prey system. Each carnivore species (cougar [*Puma concolor*], coyote [*Canis*

latrans], black bear [*Ursus americanus*], bobcat [*Lynx rufus*]) varied in size, life history, and predatory ability, ranging from large-bodied obligate predators to smaller-bodied omnivores, while prey species (mule deer [*Odocoileus hemionus*] and elk [*Cervus canadensis*]) varied dramatically in abundance. Our primary objective was to determine whether predators encountered GPS-collared parturient female ungulates more often than expected by chance (even after controlling for habitat preferences) which would suggest active search for neonates. If predators did indeed exhibit behavior consistent with searching, a secondary objective was to determine whether a shift in space use toward parturition habitat tracked the phenology of the birth pulse consistent with an effort to maximize detections of neonates. We hypothesized that the magnitude of response by predators to the birth pulse would generally be greater toward elk than mule deer for because elk were approximately five times more abundant than mule deer and could thus cross the profitability threshold associated with specialization under diet-breadth theory. We expected the carnivore species with a more generalist diet profile (bears and coyotes) would alter their foraging behaviors more strongly than cougars or bobcats because generalist consumers are more fluid in their response to changing resources (Ostfeld & Keesing, 2000; Yang et al., 2008). Bears are the least carnivorous of these taxa, and previous research suggests that male bears are disproportionately predaceous (Boertje et al., 1988; Jacoby et al., 1999; Rode et al., 2001), so we additionally hypothesized that male bears would be more likely to exhibit active search behavior. Further, cougars kill mule deer and elk of all age classes year-round (Clark et al., 2014), so we expected that the ungulate birth pulse may be less consequential to cougars given their adeptness at killing larger prey such that they may not exhibit a change in behavior during the earliest neonatal period. Finally, we hypothesized that bobcats would show the weakest response, since they rarely consume elk and mule deer in our study area (Ruprecht et al. 2021b).

2 | MATERIALS AND METHODS

2.1 | Study area

Our study was conducted in the Blue Mountains of northeastern Oregon centered at the Starkey Experimental Forest and Range between 2016 and 2019 (Figure 2). The major habitat types in the study area include grasslands, riparian areas, open forest dominated by ponderosa pine (*Pinus ponderosa*), and closed forest consisting of a mixture of Douglas fir (*Pseudotsuga menziesii*), grand fir (*Abies grandis*), larch (*Larix occidentalis*), ponderosa pine and lodgepole pine (*Pinus contorta*). Riparian areas sustain willows (*Salix* spp.), hawthorn (*Crataegus* spp.), Rocky Mountain maple (*Acer glabrum*), and other shrub species in low quantities. Starkey Experimental Forest and Range and adjacent public lands support an assemblage of native and domestic large herbivores including mule deer, white-tailed deer (*Odocoileus virginianus*), elk, and seasonally grazed domestic cattle (*Bos taurus*; Rowland et al., 1997). Carnivore species include black

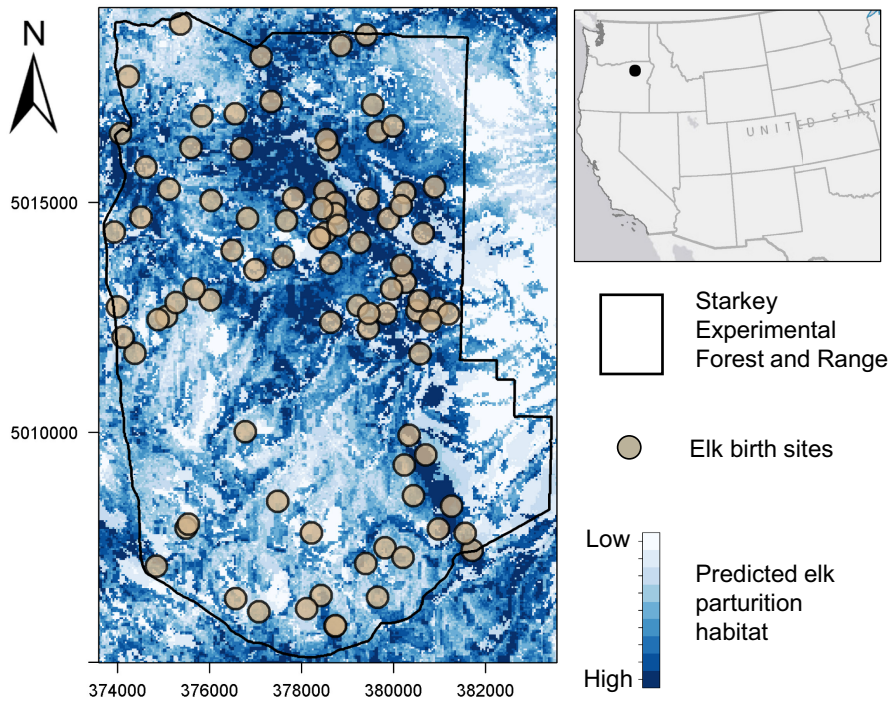


FIGURE 2 Upper right panel: the general location of study area in northeast Oregon, USA, is indicated by the black dot. Left panel: Starkey Experimental Forest and Range boundary (black polygon) overlaid on the elk parturition habitat RSF (white areas indicate areas with low probability of selection, dark blue areas indicate high probability of selection). Tan points represent elk birth sites.

bears, coyotes, cougars, and bobcats. Gray wolves (*Canis lupus*) are colonizing the area but currently occur only occasionally and unpredictably in the study area.

We used GPS telemetry data from nine cougars (representing 11 animal years), 17 coyotes (21 animal years), 11 black bears (18 animal years), six bobcats (seven animal years), 25 adult female mule deer (45 animal years), and 59 adult female elk (89 animal years). All carnivores had home ranges overlapping the area in which deer and elk were monitored during ungulate parturition (Figure S1). GPS positions were recorded every 2 or 3 h for carnivores, every 30 min for elk, and every 60 or 90 min for deer. Details on capture and handling of carnivores, elk, and mule deer can be found in Ruprecht et al. (2021a), Wisdom et al. (1993), and Jackson et al. (2021), respectively. All animal capture and handling adhered to protocols approved by the USDA Forest Service, Starkey Experimental Forest Institutional Animal Care and Use Committee (IACUC No. 92-F-0004; protocol #STKY-16-01) and followed the guidelines of the American Society of Mammalogists for the use of wild mammals in research (Sikes & Animal Care and Use Committee of the American Society of Mammalogists, 2016).

2.2 | Identifying elk and mule deer parturition events

We inferred elk parturition events ($N = 89$) from GPS-collared elk between 2016 and 2019 using the rolling minimum convex polygon (MCP) method described by Nicholson et al. (2019) to estimate large herbivore parturition events based on localized movements. We assigned a parturition event for elk as the first day a rolling MCP (based on a 24-h window) decreased to 30 hectares or less for a minimum

of 120h. If these conditions were not met, we assumed the elk did not give birth. We validated the method using independent elk GPS locations with known birth dates and locations ($N = 30$) from a previous study in the same area (Long et al., 2016). The rolling MCP method successfully predicted all known parturition events with a mean discrepancy of 18h compared to the field investigations by Long et al. (2016).

Parturition events of mule deer ($N = 45$) were determined either by (1) monitoring GPS-collared adult females for localized movement and then searching the area for neonates where a cluster of GPS locations had formed, sometimes aided by the use of vaginal implant transmitters (details in Jackson et al. (2021), $N = 14$), or (2) using the rolling MCP inference method (Nicholson et al., 2019, $N = 31$). For the rolling MCP method, we assigned a parturition event for deer as the first day a rolling MCP (based on a 24-h window) was <15 hectares or less for a minimum of 120h. We validated the rolling MCP method for 14 deer parturition events determined from field investigations and found that the method successfully detected all births, with a mean discrepancy of 33h.

2.3 | Analysis and inference

The cryptic nature of carnivores, hiding ability of prey, and forested landscapes that were characteristic in our study area precluded the type of direct observation of encounters between predators and prey that was possible in seminal works of predator searching behavior in more open landscapes (Creel & Creel, 2002; Scheel, 1993). Thus, we utilized contemporaneous GPS collar data from predators and prey to indirectly make inference on predatory behavior in response to the ungulate birth pulse. Our analyses utilized the following logic:

(1) movements of GPS-collared carnivores positioning them in the proximity of GPS-collared parturient prey more often than expected by chance, even after controlling for landscape and habitat attributes that could also influence predator movements, suggests that encounters between individual predators and individual prey are nonrandom, and thus provides evidence of searching behavior, and (2) predators using (i.e., spending time in) predicted elk parturition habitat more during the time with the greatest availability of neonates on the landscape (relative to periods before or after peak parturition) is consistent with behavior indicating a shift in habitat use by predators to maximize encounters with neonates.

This logic inspired two complementary analyses. The first assessed whether predator movements were consistent with searching behavior as evidenced by higher selection of areas near GPS-collared parturient prey relative to random locations. Next, building on the results from the previous analysis by considering only predator-prey pairs in which a carnivore species was determined to encounter a given prey species more often than expected by chance, we assessed whether carnivores shifted their habitat use coincident with the peak availability of neonates on the landscape. Considering *use*, and not *selection*, in the second analysis allowed us to determine whether the carnivore species that encountered prey more often than expected by chance did so by spending more time in parturition habitat.

2.3.1 | Determining whether predator movements are consistent with searching behavior

Our first analysis assessed whether the actual movements (hereafter “steps,” or the Euclidean distance between subsequent GPS relocations) of predators led to encounters with GPS-collared parturient females more often than hypothetical steps that they could have taken but did not. To do so, we fit step-selection functions (Avgar et al., 2016; Fortin et al., 2005) for each carnivore species to estimate the relative probability of selecting a location on the landscape, given its previous location and a suite of covariates at the ending locations of both real and hypothetical (hereafter, “random”) steps. We excluded data from individuals whose home ranges did not overlap deer and elk relocations in Starkey Experimental Forest and Range. The covariate of primary interest was whether the endpoint of each observed or random step was within a 200-m proximity of a GPS-collared parturient female ungulate at the time simultaneous predator and prey GPS positions were recorded. The use of a threshold of 200m to define an encounter between GPS-collared individuals at the time simultaneous GPS collar readings were recorded is consistent with guidelines established for detecting contact between large mammals: this buffer distance has been used by López-Bao et al. (2014), Elbroch et al. (2015), Elbroch and Quigley (2017), Rafiq, Hayward, et al. (2020), and Rafiq et al. (2020b). By comparing whether the observed steps were more often within close proximity of a GPS-collared parturient ungulate than were random steps, we could assess whether predators detected neonates more often than

expected by incidental encounter, which provides evidence of active search behavior. We restricted the analysis to include location data of each female ungulate in the 30 days after a parturition event was predicted to occur and fit separate models for deer and elk for each of the four carnivore species (eight models total). We compared each real step with 20 random steps (Latombe et al., 2014) and fit models using conditional logistic regression. The random locations were generated by taking random draws from the fitted distributions of step lengths and turning angles (Gamma and von Mises distributions, respectively; Avgar et al., 2016) constructed from GPS data for each predator species and projecting the random locations for each GPS position onto the landscape given the previous location. To control for the possibility that observed steps landed in close proximity to an ungulate simply because of the predator's preference for certain landscape or vegetative features, we included additional covariates known to influence carnivore movements (Ruprecht et al. 2021b): canopy cover (derived from LEMMA's generalized nearest neighbor model; Ohmann et al., 2011), potential vegetation type (Halofsky et al., 2014; a factor variable describing vegetation associations with classes for open forest, closed forest, grassland, and other), ruggedness (using the vector ruggedness measure, a composite index of terrain encompassing both slope and aspect; Sappington et al., 2007), the distance to nearest open road (natural log transformed), and distance to nearest perennial water source (natural log transformed). All continuous variables were centered to have a mean of 0 and scaled to have a standard deviation of 1. The step-selection function took the form $w(x) \sim \exp(\beta_1 \times \text{parturient deer or elk presence} + \beta_2 \times \text{canopy cover} + \beta_3 \times \text{potential vegetation type} + \beta_4 \times \text{ruggedness} + \beta_5 \times \ln(\text{distance to road}) + \beta_6 \times \ln(\text{distance to perennial water source}) + \beta_7 \times \ln(\text{step length}) + \beta_8 \times \cos(\text{turning angle}))$. Because the response to neonates can differ by sex of bears (Rayl et al., 2015), we fit additional models for male and female bears separately. We did not fit additional sex-specific models for cougars, coyotes, or bobcats, however, because we had no evidence a priori that predation of neonates would differ between the sexes for those species.

2.3.2 | Shift in carnivore use of parturition habitat

For the carnivore species that we determined to encounter prey more often than expected by chance, we next assessed whether they did so by shifting their space use to areas with a high probability of selection by parturient female ungulates. To this end, we constructed a resource selection function (RSF; Manly et al., 2007) using GPS locations of adult female elk in the 7 days immediately following a parturition event with landscape and vegetative characteristics hypothesized to influence location of parturition sites in our area based on previous research (Johnson et al., 2000; Long et al., 2008; Stewart et al., 2002). The RSF for elk parturition habitat took the form $w(x) \sim \exp(\beta_1 \times \text{canopy cover} + \beta_2 \times \ln(\text{distance to open road}) + \beta_3 \times \ln(\text{distance to perennial water source}) + \beta_4 \times \text{ruggedness} + \beta_5 \times \text{shrub cover} + \beta_6 \times \text{forb cover} + \beta_7 \times \text{slope} + \beta_8 \times \text{aspect} + \beta_9 \times \text{elevation} + \beta_{10} \times \text{potential vegetation type})$, where $w(x)$

is the relative probability of selection for adult female elk during the first 7 days following parturition. Percent shrub and forb cover variables were derived from LEMMA's generalized nearest neighbor model (Ohmann et al., 2011); slope, aspect, and elevation were drawn from a digital elevation model; and other covariates are as described above. For each used elk location (coded as 1) we generated 10 random locations within the entire area used by elk representing locations available to but not used by elk (coded as 0), and used this as the response variable in a generalized linear model with a binomial error distribution and logit link to model the relative probability of selection given the predictor variables described above. Given that our objective was to create a spatially explicit map of the study area predicting the areas with a high probability of selection by parturient ungulates and not make inference on the specific resources that they selected for, we did not conduct model selection and instead used the global model for predictions. Each 30×30m pixel in the resulting predictive map projected onto the study area represented $w(x)$, or the RSF score for parturition habitat. We then calculated the mean value of the RSF scores across all GPS locations for each carnivore species that exhibited active search behavior (determined from the previous analysis) on a weekly basis from 15 April to 31 July to determine whether predators shifted habitat use toward places likely to be inhabited by ungulate neonates. Weekly mean RSF scores represented each predator's use of predicted parturition habitat with higher values indicating higher use of parturition habitat, where "use" is a measure of the investment in a set of resource units by an animal during a sampling period (Lele et al., 2013).

We used the weekly average elk parturition RSF score at carnivore GPS relocations as the response variable in a generalized linear mixed model and used Julian week (i.e., the number of weeks elapsing since January 1) as a predictor to assess how carnivore use of elk parturition habitat changed throughout the time period encompassing ungulate parturition (15 April to 31 July). We included a random intercept for animal ID to control for differences in the mean elk parturition RSF score available within individual predator home ranges. We fit models with both linear and quadratic effects of Julian week as predictors. We hypothesized that if a quadratic effect of Julian week on use of parturition habitat tracked the phenology of the birth pulse such that use was highest at the time of peak availability of neonates, it would be indicative of an effort of predators to alter habitat use to maximize encounters with neonates immediately following parturition. Alternatively, lack of a quadratic relationship between predator use of parturition habitat and Julian week could indicate the predator does not spend time in areas where neonates are likely to be immediately following parturition, or that the predator may actively hunt older, more mobile neonates or other age classes of prey. We used likelihood ratio tests to compare whether the quadratic effect of Julian week was supported over a linear effect.

Despite the uniqueness of having contemporaneous GPS collar data from four species of carnivores and two species of prey, we caution the strength of the results from the step selection analysis is likely underestimated due to the fact that not all predators or prey in

the study area were GPS monitored, and because intervals between GPS collar relocations up to 3 h meant that not all predator-prey encounters were detected (Creel et al., 2013). This means that in the step selection analysis, our inference is limited to behavior occurring between individual GPS-collared carnivores responding to individual GPS-collared prey occurring in their home ranges. The strength of our results will also be underestimated because we could only monitor parturient adult female ungulates with GPS collars and not their young. This required the assumption that the location of the adult female is a reasonable proxy for the location of the neonate but due to discrepancies between adult female foraging locations and neonate hiding locations, this assumption may not always hold. Further, we could not infer if or when neonates died, so adult females that lost their young were considered parturient for the whole parturition period. Finally, in most cases we did not field confirm neonate births but instead determined their existence and timing using established methods for detecting parturition from localized movements indicated by GPS data. These data limitations introduce noise into our analyses and will act to dilute true signals. Therefore, we caution that our findings may underestimate the strength of the response of predators to prey and that results should be considered in light of potential for Type II error. But the responses we did document should not be considered spurious given they could be observed despite considerable noise in the dataset.

3 | RESULTS

We identified 45 parturition events for deer (14 determined from field investigations and 31 determined using the rolling MCP method) and 89 parturition sites for elk (all determined using the rolling MCP method) between 2016 and 2019 (Figures 2 and S1). We estimated 27 May (range: 10 May to 25 June) as the mean parturition date for elk and 02 June (range: 21 May to 28 June) as the mean parturition date for deer across all 4 years in our study.

3.1 | Determining whether predator movements are consistent with searching behavior

Of the four carnivore species, none made movements such that they encountered GPS-collared parturient mule deer (within a 200-m proximity) in the first 30 days post parturition more often than the random movements generated in the step-selection function (Figures 3a and 4a; Tables S1–S2) suggesting they were not actively searching for neonates of GPS-collared mule deer. We documented only one GPS-collared cougar and bobcat within 200m of a GPS-collared mule deer at the time a simultaneous fix was taken during the 30 days following parturition (Figure S2) so models could not be fit for these species. Only two carnivore species exhibited movements that positioned them in the proximity of GPS-collared elk post-parturition more often than did hypothetical movements, cougars ($\beta_{\text{elk presence}} = 0.94$, $p = 0.001$; Figure 3b; Table S3)

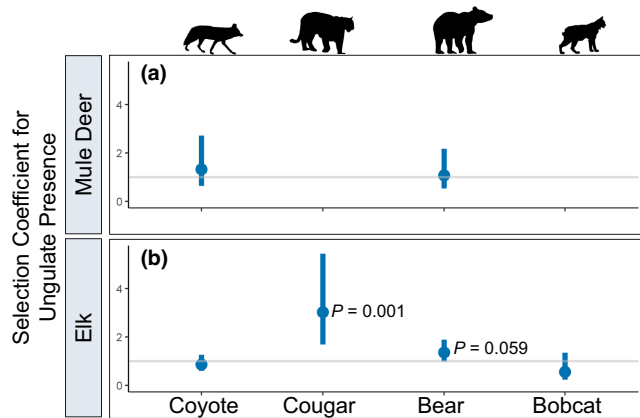


FIGURE 3 Selection coefficients ($\exp[\beta_{\text{ungulate presence}}]$) from step-selection functions assessing whether carnivores (coyotes, cougars, black bears, and bobcats) made movements that placed them in the proximity of (a) mule deer and (b) elk more often than expected by chance in northeastern Oregon, 2016–2019. Dots represent point estimates for the selection coefficient for ungulate presence and bars represent 95% confidence intervals. The gray horizontal line at $y = 1$ indicates indifference toward parturient ungulates; values above this line indicate selection and values below the line indicate avoidance. p -values indicate whether the parameter differed significantly from zero. Cougars and bobcats did not encounter mule deer often enough for models to converge.

and bears, although for bears the result was marginally significant ($\beta_{\text{elk presence}} = 0.30$, $p = 0.059$; Figure 3b; Table S3). Sex-specific analysis revealed that male bears were more likely to encounter elk than expected by chance ($\beta_{\text{elk presence}} = 0.56$, $p = 0.004$, $N = 7$ bears; Figure 4b; Table S4) while there was no evidence supporting this effect for female bears ($\beta_{\text{elk presence}} = -0.45$, $p = 0.24$, $N = 4$ bears; Figure 4b; Table S4). Projecting model predictions onto the landscape spatially and overlaying GPS locations of post-parturient female elk in the 30 days post birth further revealed similarities between areas used by neonatal elk and areas selected for by male bears and cougars as documented by the high degree of spatial overlap (Figure 5a,c). Female bears, however, generally did not select for areas that overlapped with elk neonates (Figure 5b), suggesting their space use decisions were driven more heavily by other resources that were unrelated to elk.

3.2 | Shift in carnivore use of parturition habitat

We hypothesized that use of predicted parturition habitat by actively searching predators would track the phenology of the birth pulse such that they would use areas that maximized encounters with neonates when they were most available. Of the species concluded to encounter parturient GPS-collared elk more often than expected by chance (cougars and bears responding to elk calves), linear mixed models suggested that only male bears followed the expected quadratic pattern for use of parturition habitat coincident with peak parturition date ($\beta_{\text{Julian week}} = 0.027$, $p = .03$; $\beta_{\text{Julian week}^2} = -0.028$, $p = .03$; Figure 6b) wherein the quadratic terms were supported over

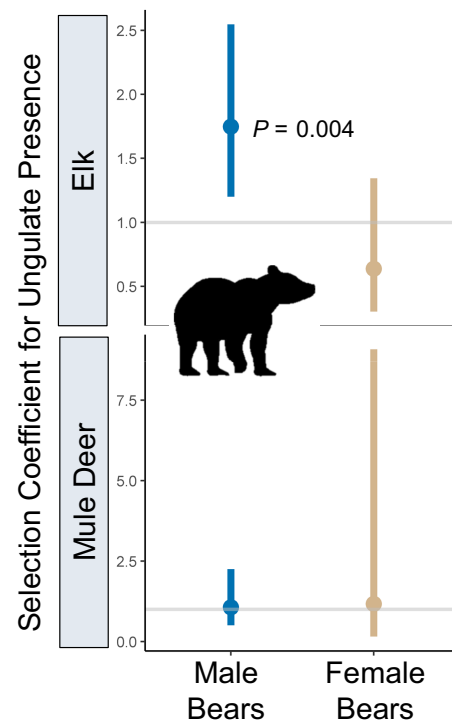


FIGURE 4 Selection coefficients ($\exp[\beta_{\text{ungulate presence}}]$) from step-selection functions assessing whether male and female black bears made movements that placed them in a 200-m proximity of parturient mule deer or elk more often than expected by chance in northeastern Oregon, 2016–2019. Dots represent point estimates for the selection coefficient for mule deer or elk presence and bars represent 95% confidence intervals. The gray horizontal line at $y = 1$ indicates indifference toward parturient elk; values above this line indicate selection and values below the line indicate avoidance. p -values indicate whether the parameter differed significantly from zero.

a linear term (likelihood ratio test, $p = 0.03$) for the effect of Julian week on use of calving habitat. To assess whether this result could be spuriously driven by bears selecting for parturition habitat for other reasons such as bottom-up forage acquisition, we tested whether female bears with similar vegetation requirements as male bears also responded to parturition habitat but found no support for a quadratic response (likelihood ratio test, $p = 0.62$; Figure 6c). For cougars, use of predicted parturition habitat was also better explained by a linear term for Julian week (likelihood ratio test $p = 0.32$; Figure 6d).

4 | DISCUSSION

We found that of four carnivore species, only two exhibited behavior suggestive of active search for GPS-collared elk but none exhibited such behavior for GPS-collared mule deer. The fact that no carnivores encountered parturient mule deer more often than expected by chance was consistent with our predictions that the young of less abundant species would not be targeted (Figure 1b); mule deer are at least five times less abundant than elk in this system (Oregon Department of Fish and Wildlife, unpublished data).

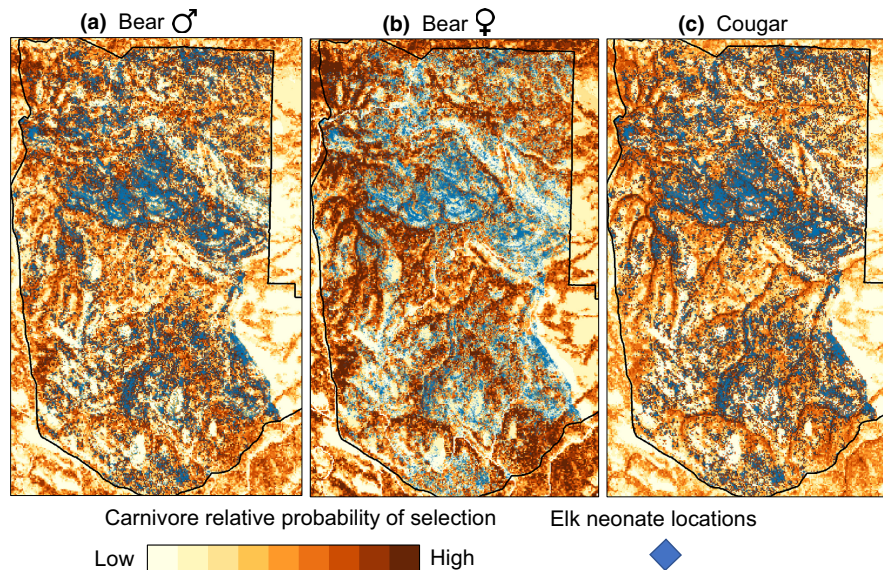


FIGURE 5 Relative probability of selection for (a) male black bears, (b) female black bears, and (c) cougars in northeastern OR (2016–2019) predicted from step-selection functions (darker shades of brown indicating higher relative probability of selection for each carnivore). In each panel, the GPS locations of telemetered adult female elk in the 30 days post-parturition (blue points) are overlaid on the relative probability of selection maps. The elk locations are displayed identically in each panel but appear darker when they overlap pixels with higher (i.e., darker shades of) relative probabilities of selection for carnivores. The maps are presented as a visual aid to portray how male bears and cougars, but not female bears, select for features of the landscape that overlap with areas used by post-parturient elk. Maps for all species can be found in the Supporting Information (Figures S3–S12).

This result suggests that mule deer fawn mortalities in this study area (Jackson et al., 2021) are likely the result of fortuitous encounters (from the perspective of the predator) and that risk to mule deer from incidental predation may thus depend on the amount of overlap between deer and elk parturition habitat for predators that are primarily searching for elk calves. Our finding that two of the four carnivore species encountered GPS-collared elk (the more abundant species) more often than expected by chance partially aligned with our expectations that a predatory response would be greater toward the more abundant prey species. We also expected the more generalist carnivores (bears and coyotes, which are highly omnivorous) would exhibit a more fluid response to an ephemeral prey source. This hypothesis was supported for bears but not coyotes. The lack of response of bobcats and coyotes to both elk and deer may be explained for several reasons. First, elk calves are large prey items for mesopredators such as coyotes and bobcats particularly when subject to maternal defense from elk. While mule deer young are much smaller, their rarity on the landscape may not have warranted search behavior. Nonetheless, we can speculate that had mule deer been the more abundant species in this area, or if we had a larger sample of collared mule deer, we may have observed some level of search behavior by coyotes and/or bobcats. Second, bobcats are efficient predators of small prey while coyotes in this system gain a substantial amount of protein via scavenging (Ruprecht et al. 2021b), both of which potentially reduce the need to pursue neonates. Finally, our sample size of collared bobcats was small ($N = 6$) so results may have been subject to Type II error for that species.

Our analyses to evaluate whether carnivores' use of elk parturition habitat tracked the phenology of the birth pulse revealed further contrasting behaviors among the predators in our study. Use of elk parturition habitat by male bears was best explained by a model with a quadratic effect of Julian week, with its maximum aligning almost perfectly with the peak of the birth pulse (Figure 6b). This result suggests that male bears exhibited a spatial shift in habitat consistent with an effort to maximize encounters with elk neonates immediately following parturition, which is logical given that bears are limited by a short window in which they can efficiently hunt neonates. This idea is further supported in that the number of encounters between GPS-collared bears and parturient elk in the 30 days post-parturition peaked around 10 days after an elk gave birth (Figure S2). By contrast, the quadratic effect was not supported for cougars (Figure 6d). Although previous research has shown that juvenile elk constitute a large fraction of the diets of cougars (Clark et al., 2014), several aspects of cougar predatory behavior may explain why cougars did not exhibit a quadratic effect indicative of increased use of areas used by neonates. First, because elk become solitary to give birth before rejoining the herd several weeks later (Paquet & Brook, 2004), it may be inefficient for cougars to target solitary mother-young pairs when they would have access to more individuals by pursuing larger herds of mixed age classes. Such "nursery herds" (Paquet & Brook, 2004) would present naïve prey such as yearling elk that may have recently lost maternal guidance, or vulnerable young of the year after the mother-young pair rejoined the herd after parturition. The number of encounters between GPS-collared cougars and parturient elk in the 30 days post birth was greatest around 20–30 days after an elk

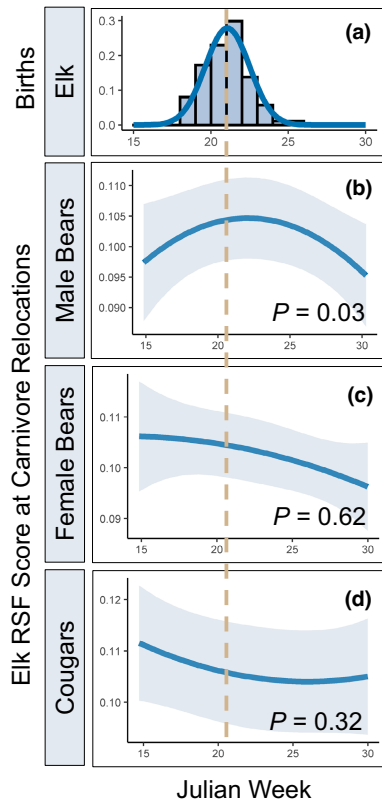


FIGURE 6 Elk births and carnivore use of predicted elk parturition habitat as a function of Julian week in northeastern Oregon, 2016–2019. (a) The density of elk births as a function of Julian week. Bars indicate counts of births per week and the blue curve is a normal distribution fit to the data. The dashed tan line indicates the mean birth date. Predictions from linear mixed models relating the weekly average RSF score for parturient elk at carnivore GPS relocations for male bears (b), female bears (c), and cougars (d) as a quadratic function of Julian week. The solid blue lines display the model predictions for carnivore use of elk parturition habitat and the gray shading represents its 95% confidence interval. p -values correspond to the outcome of likelihood ratio tests assessing whether the models containing quadratic terms for Julian week were supported over models with only a linear term for Julian week.

gave birth which further supports the idea that cougars pursued calves only after they had matured for several weeks, or that the ambush predation mode of cougars required calves to be more mobile before they were detected. We were initially concerned that the apparent use of parturition habitat by bears coinciding with the birth pulse could be driven by selection for other dynamic resources such as green vegetation that was correlated with elk parturition habitat, causing a spurious result. However, only male bears exhibited this pattern, and we would expect females to exhibit the same response to bottom-up resources.

Although we are unaware of previous research on search behavior of cougars toward ungulate neonates, our work both aligns and contrasts with patterns described for black bears and coyotes elsewhere. The density of elk neonates in our study area was closer in magnitude to the number of caribou calves in the study by Rayl

et al. (2018) that determined bears actively searched for neonates than it was to the study by Bastille-Rousseau et al. (2011), in which bears opportunistically encountered neonates. Our finding that male bears were much more likely to encounter neonates than were females also aligns with Rayl et al. (2015) who found that male bears were more likely to visit caribou calving grounds than were females. Further, several other studies have documented higher predation or meat consumption by male black bears than females (Boertje et al., 1988; Jacoby et al., 1999), which should be expected given that previous research has shown that larger, male bears require more animal-borne protein to gain weight than do smaller, female bears (Rode et al., 2001). Our results did not suggest that coyotes encountered GPS-collared parturient elk more than expected by chance which accords with a cause-specific mortality study of elk calves in this region that found coyote predation to be minor (Johnson et al., 2019). In other ecosystems, however, coyotes have been implicated as nontrivial sources of mortality for elk calves (Barber-Meyer et al., 2008) although there is mounting evidence that coyote predation on neonates occurs largely only when small mammal populations are low (Hamlin et al., 1984; Hurley et al., 2011). We unfortunately did not have sufficient data on occurrence and abundance of alternative prey to assess whether this occurred in our study.

It is important to view the distinction between active search and incidental encounter in light of the effects that predator population dynamics may have on prey. If predators employ active search behavior, then a reduction in predator density may not yield increased neonate survival because neonates spared by that individual become targets for the remaining pool of searching predators (unless prey density is such that predation is limited by handling time or satiation). But if neonate predation occurs because of incidental encounters, then a reduction in predator density benefits a focal prey species by reducing encounter rates both because each prey is less likely to be incidentally encountered per unit time and because predators spend time handling other species. Although population growth rates of ungulates are most sensitive to survival of adult females, this demographic rate is consistently high and stable (Gaillard et al., 1998) and many ungulate populations are instead limited by insufficient recruitment due to low neonate survival (Raithel et al., 2007). Thus, knowledge of how different species of carnivores search or encounter different species of prey will be needed to determine the extent to which predator control would be an effective strategy for managing ungulate populations.

A necessary assumption in our study was that predator and adult female ungulate locations within a 200-m proximity at the time of simultaneous GPS recordings constituted an encounter with an ungulate neonate in the weeks after birth. This assumption was required because we did not have GPS transmitters on neonates and thus assumed the location of the adult female was a reasonable proxy for the location of the neonate. This assumption certainly introduced some amount of data contamination that may have obscured a stronger signal than what we observed. Although our dataset was unique in that it included contemporaneous GPS recordings on four species of carnivores and two species of ungulates, with fix intervals up to 3h

on predator GPS collars, we are certain to have missed additional encounters with GPS-collared prey as well as encounters with prey that were not GPS-collared. Another limitation in our study was that we were required to use inference methods to predict some of the parturition events for deer and all parturition events for elk which are subject to error in the exact timing of births. Further, some number of neonates likely died in the days following birth which our analysis could not consider. These factors should only have acted to dilute any potential signals in the data and not cause spurious correlations. Nonetheless, we caution that our results are conservative and should be interpreted with the possibility that Type II error may be present.

An emerging frontier in animal ecology is understanding if and how behavior influences population dynamics. Consequently, elucidating how predatory tactics (e.g., active search vs. incidental encounters) affect prey populations should feature prominently in future research. Our results suggest there was a behavioral response by two of the four carnivores toward GPS-collared parturient elk, but no response by any of the carnivores toward GPS-collared parturient mule deer. This result combined with previous research suggests that the foraging tactics by predators in response to a pulsed resource differ by both predator and prey species, are likely ecosystem-specific, and may change dynamically through time as the availability of vulnerable neonates fluctuates.

AUTHOR CONTRIBUTIONS

Joel Ruprecht: Conceptualization (equal); formal analysis (lead); methodology (equal); writing – original draft (lead). **Tavis D. Forrester:** Conceptualization (equal); data curation (equal); project administration (equal); writing – review and editing (equal). **Nathan J. Jackson:** Conceptualization (equal); data curation (equal); writing – review and editing (equal). **Darren A. Clark:** Conceptualization (equal); data curation (equal); project administration (equal); writing – original draft (equal). **Michael J. Wisdom:** Conceptualization (equal); data curation (equal); project administration (equal); writing – review and editing (equal). **Mary M. Rowland:** Conceptualization (equal); data curation (equal); writing – review and editing (equal). **Joshua B. Smith:** Conceptualization (equal); data curation (equal); writing – review and editing (equal). **Kelley M. Stewart:** Conceptualization (equal); data curation (equal); writing – review and editing (equal). **Taal Levi:** Conceptualization (equal); formal analysis (equal); project administration (equal); writing – original draft (equal).

ACKNOWLEDGMENTS

We thank R. Long and M. Bianco for data assistance. We are grateful to the Oregon Department of Fish and Wildlife, the USDA Forest Service Pacific Northwest Research Station, Oregon State University, and the Wildlife Restoration Act for funding and/or logistical support. We thank research technicians and volunteers who assisted with fieldwork.

CONFLICT OF INTEREST

We declare no conflict of interest.

FUNDING INFORMATION

Financial support was provided by the Oregon Department of Fish and Wildlife and the Wildlife and Sport Fish Restoration Act.

DATA AVAILABILITY STATEMENT

Data associated with this manuscript can be accessed at the Dryad data repository (<https://doi.org/10.5061/dryad.rv15dv49x>).

ORCID

Joel Ruprecht  <https://orcid.org/0000-0002-9443-7582>

REFERENCES

- Avgar, T., Potts, J. R., Lewis, M. A., & Boyce, M. S. (2016). Integrated step selection analysis: Bridging the gap between resource selection and animal movement. *Methods in Ecology and Evolution*, 7, 619–630.
- Barber-Meyer, S. M., Mech, L. D., & White, P. (2008). Elk calf survival and mortality following wolf restoration to Yellowstone National Park. *Wildlife Monographs*, 169, 1–30.
- Bastille-Rousseau, G., Fortin, D., Dussault, C., Courtois, R., & Ouellet, J. P. (2011). Foraging strategies by omnivores: Are black bears actively searching for ungulate neonates or are they simply opportunistic predators? *Ecography*, 34, 588–596.
- Bastille-Rousseau, G., Rayl, N. D., Ellington, E. H., Schaefer, J. A., Peers, M. J., Mumma, M. A., Mahoney, S. P., & Murray, D. L. (2016). Temporal variation in habitat use, co-occurrence, and risk among generalist predators and a shared prey. *Canadian Journal of Zoology*, 94, 191–198.
- Boertje, R., Gasaway, W., Grangaard, D., & Kelleyhouse, D. (1988). Predation on moose and caribou by radio-collared grizzly bears in east central Alaska. *Canadian Journal of Zoology*, 66, 2492–2499.
- Bowersock, N. R., Litt, A. R., Merkle, J. A., Gunther, K. A., & van Manen, F. T. (2021). Responses of American black bears to spring resources. *Ecosphere*, 12, e03773.
- Clark, D. A., Davidson, G. A., Johnson, B. K., & Anthony, R. G. (2014). Cougar kill rates and prey selection in a multiple-prey system in northeast Oregon. *The Journal of Wildlife Management*, 78, 1161–1176.
- Creel, S., & Creel, N. M. (2002). Chapter 5: Prey selection. In *The African wild dog* (pp. 103–123). Princeton University Press.
- Creel, S., Winnie, J. A., Jr., & Christianson, D. (2013). Underestimating the frequency, strength and cost of antipredator responses with data from GPS collars: an example with wolves and elk. *Ecology and Evolution*, 3, 5189–5200.
- Elbroch, L. M., & Quigley, H. (2017). Social interactions in a solitary carnivore. *Current Zoology*, 63, 357–362.
- Elbroch, L. M., Quigley, H. B., & Caragiulo, A. (2015). Spatial associations in a solitary predator: Using genetic tools and GPS technology to assess cougar social organization in the Southern Yellowstone Ecosystem. *Acta Ethologica*, 18, 127–136.
- Fortin, D., Beyer, H. L., Boyce, M. S., Smith, D. W., Duchesne, T., & Mao, J. S. (2005). Wolves influence elk movements: Behavior shapes a trophic cascade in Yellowstone National Park. *Ecology*, 86, 1320–1330.
- Gaillard, J.-M., Festa-Bianchet, M., & Yoccoz, N. G. (1998). Population dynamics of large herbivores: Variable recruitment with constant adult survival. *Trends in Ecology & Evolution*, 13, 58–63.
- Griffin, K. A., Hebblewhite, M., Robinson, H. S., Zager, P., Barber-Meyer, S. M., Christianson, D., Creel, S., Harris, N. C., Hurley, M. A., Jackson, D. H., Johnson, B. K., Myers, W. L., Raithe, J. D., Schlegel, M., Smith, B. L., White, C., & White, P. J. (2011). Neonatal mortality of elk driven by climate, predator phenology

- and predator community composition. *Journal of Animal Ecology*, 80, 1246–1257.
- Halofsky, J. E., Creutzburg, M. K., & Hemstrom, M. A. (2014). *Integrating social, economic, and ecological values across large landscapes*. Gen. Tech. Rep. PNW-GTR-896. US Department of Agriculture, Forest Service, Pacific Northwest Research Station, 206.
- Hamlin, K. L., Riley, S. J., Pyrah, D., Dood, A. R., & Mackie, R. J. (1984). Relationships among mule deer fawn mortality, coyotes, and alternate prey species during summer. *The Journal of Wildlife Management*, 48, 489–499.
- Holling, C. S. (1959). The components of predation as revealed by a study of small-mammal predation of the European Pine Sawfly. *The Canadian Entomologist*, 91, 293–320.
- Hurley, M. A., Unsworth, J. W., Zager, P., Hebblewhite, M., Garton, E. O., Montgomery, D. M., Skalski, J. R., & Maycock, C. L. (2011). Demographic response of mule deer to experimental reduction of coyotes and mountain lions in Southeastern Idaho. *Wildlife Monographs*, 178, 1–33.
- Jackson, N. J., Stewart, K. M., Wisdom, M. J., Clark, D. A., & Rowland, M. M. (2021). Demographic performance of a large herbivore: Effects of winter nutrition and weather. *Ecosphere*, 12, e03328.
- Jacoby, M. E., Hilderbrand, G. V., Servheen, C., Schwartz, C. C., Arthur, S. M., Hanley, T. A., Robbins, C. T., & Michener, R. (1999). Trophic relations of brown and black bears in several western North American ecosystems. *The Journal of Wildlife Management*, 63, 921–929.
- Johnson, B. K., Jackson, D. H., Cook, R. C., Clark, D. A., Coe, P. K., Cook, J. G., Rearden, S. N., Findholt, S. L., & Noyes, J. H. (2019). Roles of maternal condition and predation in survival of juvenile elk in Oregon. *Wildlife Monographs*, 201, 3–60.
- Johnson, B. K., Kern, J. W., Wisdom, M. J., Findholt, S. L., & Kie, J. G. (2000). Resource selection and spatial separation of mule deer and elk during spring. *The Journal of Wildlife Management*, 64, 685–697.
- Latombe, G., Fortin, D., & Parrott, L. (2014). Spatio-temporal dynamics in the response of woodland caribou and moose to the passage of grey wolf. *Journal of Animal Ecology*, 83, 185–198.
- Lele, S. R., Merrill, E. H., Keim, J., & Boyce, M. S. (2013). Selection, use, choice and occupancy: Clarifying concepts in resource selection studies. *Journal of Animal Ecology*, 82, 1183–1191.
- Levi, T., Kilpatrick, A. M., Barfield, M., Holt, R. D., Mangel, M., & Wilmers, C. C. (2015). Threshold levels of generalist predation determine consumer response to resource pulses. *Oikos*, 124, 1436–1443.
- Linnell, J. D., Aanes, R., & Andersen, R. (1995). Who killed Bambi? The role of predation in the neonatal mortality of temperate ungulates. *Wildlife Biology*, 1, 209–223.
- Long, R. A., Bowyer, R. T., Porter, W. P., Mathewson, P., Monteith, K. L., Findholt, S. L., Dick, B. L., & Kie, J. G. (2016). Linking habitat selection to fitness-related traits in herbivores: The role of the energy landscape. *Oecologia*, 181, 709–720.
- Long, R. A., Rachlow, J. L., & Kie, J. G. (2008). Effects of season and scale on response of elk and mule deer to habitat manipulation. *The Journal of Wildlife Management*, 72, 1133–1142.
- López-Bao, J. V., Rodríguez, A., Delibes, M., Fedriani, J. M., Calzada, J., Ferreras, P., & Palomares, F. (2014). Revisiting food-based models of territoriality in solitary predators. *Journal of Animal Ecology*, 83, 934–942.
- MacArthur, R. H., & Pianka, E. R. (1966). On optimal use of a patchy environment. *The American Naturalist*, 100, 603–609.
- Manly, B., McDonald, L., Thomas, D. L., McDonald, T. L., & Erickson, W. P. (2007). *Resource selection by animals: Statistical design and analysis for field studies*. Springer Science & Business Media.
- Messier, F. (1994). Ungulate population models with predation: A case study with the North American moose. *Ecology*, 75, 478–488.
- Murdoch, W. W. (1969). Switching in general predators: Experiments on predator specificity and stability of prey populations. *Ecological Monographs*, 39, 335–354.
- Nicholson, K. L., Warren, M. J., Rostan, C., Månsson, J., Paragi, T. F., & Sand, H. (2019). Using fine-scale movement patterns to infer ungulate parturition. *Ecological Indicators*, 101, 22–30.
- Ohmann, J. L., Gregory, M. J., Henderson, E. B., & Roberts, H. M. (2011). Mapping gradients of community composition with nearest-neighbour imputation: Extending plot data for landscape analysis. *Journal of Vegetation Science*, 22, 660–676.
- Ostfeld, R., & Keesing, F. (2000). Pulsed resources and community dynamics of consumers in terrestrial ecosystems. *Trends in Ecology & Evolution*, 15, 232–237.
- Paquet, P. C., & Brook, R. K. (2004). From the field: Island use as an anti-predator tactic by parturient elk and nursery herds in Riding Mountain National Park, Manitoba. *Wildlife Society Bulletin*, 32, 1321–1324.
- Pelech, S. A., Smith, J. N., & Boutin, S. (2010). A predator's perspective of nest predation: Predation by red squirrels is learned, not incidental. *Oikos*, 119, 841–851.
- Rafiq, K., Hayward, M., Wilson, A., Meloro, C., Jordan, N., Wich, S., McNutt, J., & Golabek, K. (2020). Spatial and temporal overlaps between leopards (*Panthera pardus*) and their competitors in the African large predator guild. *Journal of Zoology*, 311, 246–259.
- Rafiq, K., Jordan, N., Wilson, A., McNutt, J., Hayward, M., Meloro, C., Wich, S., & Golabek, K. (2020). Spatio-temporal factors impacting encounter occurrences between leopards and other large African predators. *Journal of Zoology*, 310, 191–200.
- Raithel, J. D., Kauffman, M. J., & Pletscher, D. H. (2007). Impact of spatial and temporal variation in calf survival on the growth of elk populations. *The Journal of Wildlife Management*, 71, 795–803.
- Rayl, N. D., Bastille-Rousseau, G., Organ, J. F., Mumma, M. A., Mahoney, S. P., Soulliere, C. E., Lewis, K. P., Otto, R. D., Murray, D. L., & Waits, L. P. (2018). Spatiotemporal heterogeneity in prey abundance and vulnerability shapes the foraging tactics of an omnivore. *The Journal of Animal Ecology*, 87, 874–887.
- Rayl, N. D., Fuller, T. K., Organ, J. F., McDonald, J. E., Jr., Otto, R. D., Bastille-Rousseau, G., Soulliere, C. E., & Mahoney, S. P. (2015). Spatiotemporal variation in the distribution of potential predators of a resource pulse: Black bears and caribou calves in Newfoundland. *The Journal of Wildlife Management*, 79, 1041–1050.
- Rode, K. D., Robbins, C. T., & Shipley, L. A. (2001). Constraints on herbivory by grizzly bears. *Oecologia*, 128, 62–71.
- Rowland, M. M., Bryant, L. D., Johnson, B. K., Noyes, J. H., Wisdom, M. J., & Thomas, J. W. (1997). *The Starkey project: History, facilities, and data collection methods for ungulate research*. USDA Forest Service General Technical Report PNW-GTR-396.
- Ruprecht, J., Eriksson, C., Forrester, T. D., Clark, D. A., Wisdom, M., Rowland, M. M., Johnson, B. K., & Levi, T. (2021). Integrating spatial capture-recapture models with variable individual identifiability. *Ecological Applications*, 31, e02405.
- Ruprecht, J., Eriksson, C. E., Forrester, T. D., Spitz, D. B., Clark, D. A., Wisdom, M. J., Bianco, M., Rowland, M. M., Smith, J. B., Johnson, B. K., & Levi, T. (2021). Variable strategies to solve risk-reward tradeoffs in carnivore communities. *Proceedings of the National Academy of Sciences*, 118, e2101614118.
- Sappington, J. M., Longshore, K. M., & Thompson, D. B. (2007). Quantifying landscape ruggedness for animal habitat analysis: A case study using bighorn sheep in the Mojave Desert. *The Journal of Wildlife Management*, 71, 1419–1426.
- Scheel, D. (1993). Profitability, encounter rates, and prey choice of African lions. *Behavioral Ecology*, 4, 90–97.
- Schmidt, K. A. (1999). Foraging theory as a conceptual framework for studying nest predation. *Oikos*, 85, 151–160.
- Schmidt, K. A. (2004). Incidental predation, enemy-free space and the coexistence of incidental prey. *Oikos*, 106, 335–343.
- Schmidt, K. A., Goheen, J. R., & Naumann, R. (2001). Incidental nest predation in songbirds: Behavioral indicators detect ecological scales and processes. *Ecology*, 82, 2937–2947.

- Sikes, R. S., & Animal Care and Use Committee of the American Society of Mammalogists. (2016). 2016 Guidelines of the American Society of Mammalogists for the use of wild mammals in research and education. *Journal of Mammalogy*, 97, 663–688.
- Stewart, K. M., Bowyer, R. T., Kie, J. G., Cimon, N. J., & Johnson, B. K. (2002). Temporospatial distributions of elk, mule deer, and cattle: Resource partitioning and competitive displacement. *Journal of Mammalogy*, 83, 229–244.
- Svoboda, N. J., Belant, J. L., Beyer, D. E., Duquette, J. F., & Lederle, P. E. (2019). Carnivore space use shifts in response to seasonal resource availability. *Ecosphere*, 10, e02817.
- Vigallon, S. M., & Marzluff, J. M. (2005). Is nest predation by Steller's Jays (*Cyanocitta stelleri*) incidental or the result of a specialized search strategy? *The Auk*, 122, 36–49.
- Wisdom, M. J., Cook, J. G., Rowland, M. M., & Noyes, J. H. (1993). *Protocols for care and handling of deer and elk at the Starkey Experimental Forest and Range*. USDA Forest Service General Technical Report PNW-GTR-311.
- Yang, L. H., Bastow, J. L., Spence, K. O., & Wright, A. N. (2008). What can we learn from resource pulses. *Ecology*, 89, 621–634.
- Zager, P., & Beecham, J. (2006). The role of American black bears and brown bears as predators on ungulates in North America. *Ursus*, 17, 95–108.

SUPPORTING INFORMATION

Additional supporting information can be found online in the Supporting Information section at the end of this article.

How to cite this article: Ruprecht, J., Forrester, T. D., Jackson, N. J., Clark, D. A., Wisdom, M. J., Rowland, M. M., Smith, J. B., Stewart, K. M., & Levi, T. (2022). A seasonal pulse of ungulate neonates influences space use by carnivores in a multi-predator, multi-prey system. *Ecology and Evolution*, 12, e9389. <https://doi.org/10.1002/ece3.9389>