

Research article

Open Access

Altered serotonin physiology in human breast cancers favors paradoxical growth and cell survivalVaibhav P Pai^{1,2,4}, Aaron M Marshall^{1,2}, Laura L Hernandez¹, Arthur R Buckley³ and Nelson D Horseman^{1,2}¹Department of Molecular and Cellular Physiology, University of Cincinnati, 231 Albert Sabin Way, Cincinnati, OH, 45267-0576, USA²Systems Biology and Physiology Program, University of Cincinnati, 231 Albert Sabin Way, Cincinnati, OH, 45267-0576, USA³James L. Winkle College of Pharmacy, University of Cincinnati, 3225 Eden Ave, Cincinnati, OH, 45267-0004, USA⁴Current address: Tufts Center for Regenerative and Developmental Biology and Biology Department, Tufts University, 200 Boston Ave, Medford, MA, 02155, USACorresponding author: Nelson D Horseman, nelson.horseman@uc.edu

Received: 20 Jul 2009 Revisions requested: 21 Sep 2009 Revisions received: 25 Oct 2009 Accepted: 10 Nov 2009 Published: 10 Nov 2009

Breast Cancer Research 2009, **11**:R81 (doi:10.1186/bcr2448)This article is online at: <http://breast-cancer-research.com/content/11/6/R81>© 2009 Pai *et al*; licensee BioMed Central Ltd.This is an open access article distributed under the terms of the Creative Commons Attribution License (<http://creativecommons.org/licenses/by/2.0>), which permits unrestricted use, distribution, and reproduction in any medium provided the original work is properly cited.**Abstract**

Introduction The breast microenvironment can either retard or accelerate the events associated with progression of latent cancers. However, the actions of local physiological mediators in the context of breast cancers are poorly understood. Serotonin (5-HT) is a critical local regulator of epithelial homeostasis in the breast and other organs. Herein, we report complex alterations in the intrinsic mammary gland serotonin system of human breast cancers.

Methods Serotonin biosynthetic capacity was analyzed in human breast tumor tissue microarrays using immunohistochemistry for tryptophan hydroxylase 1 (TPH1). Serotonin receptors (5-HT₁₋₇) were analyzed in human breast tumors using the Oncomine database. Serotonin receptor expression, signal transduction, and 5-HT effects on breast cancer cell phenotype were compared in non-transformed and transformed human breast cells.

Results In the context of the normal mammary gland, 5-HT acts as a physiological regulator of lactation and involution, in part by favoring growth arrest and cell death. This tightly regulated 5-HT system is subverted in multiple ways in human breast cancers.

Specifically, TPH1 expression undergoes a non-linear change during progression, with increased expression during malignant progression. Correspondingly, the tightly regulated pattern of 5-HT receptors becomes dysregulated in human breast cancer cells, resulting in both ectopic expression of some isoforms and suppression of others. The receptor expression change is accompanied by altered downstream signaling of 5-HT receptors in human breast cancer cells, resulting in resistance to 5-HT-induced apoptosis, and stimulated proliferation.

Conclusions Our data constitutes the first report of direct involvement of 5-HT in human breast cancer. Increased 5-HT biosynthetic capacity accompanied by multiple changes in 5-HT receptor expression and signaling favor malignant progression of human breast cancer cells (for example, stimulated proliferation, inappropriate cell survival). This occurs through uncoupling of serotonin from the homeostatic regulatory mechanisms of the normal mammary epithelium. The findings open a new avenue for identification of diagnostic and prognostic markers, and valuable new therapeutic targets for managing breast cancer.

Introduction

Evolution in cancers is a convergent phenomenon, during which heterogeneous genetic and epigenetic changes lead to similar ultimate tumor phenotypes. The essential phenotype of

epithelial cancers (e.g., breast, liver, pancreas, prostate, and so on) includes: self-sufficiency for growth signals, insensitivity to growth inhibition, evasion of programmed cell death, apparently limitless replicative potential, sustained angiogenesis,

5-HT: 5-hydroxytryptamine, serotonin; 5-HT₇: type 7 serotonin receptor protein; ATCC: American Type Culture Collection; BSA: Bovine Serum Albumin; DMEM: Dulbecco's Modified Eagle Medium; EGF: Epidermal Growth Factor; ER: Estrogen Receptor; FBS: Fetal Bovine Serum; HRP: Horseradish peroxidase; HTR: gene or mRNA encoding serotonin receptor; PBS: Phosphate buffered saline; pHMEC: primary Human Mammary Epithelial Cells; PR: Progesterone Receptor; RT-PCR reverse-transcriptase-couple polymerase chain reaction; SERT: serotonin transporter protein; TPH1: tryptophan hydroxylase 1.

and tissue invasion [1-4]. The convergent evolution of cancer phenotypes presents numerous prevention and treatment challenges because of the ability of cancer cells to exploit a variety of normal physiological processes out of context. In this study, we report extensive modifications of the recently-discovered mammary serotonin (5-hydroxytryptamine, 5-HT) system [5-9] in human breast cancers. This is the first account illustrating direct involvement of 5-HT in breast cancers, and shows that an important homeostatic signal is subverted by cancer cells, yielding paradoxical effects on growth and apoptosis.

Serotonin is a monoamine hormone and neurotransmitter that has been evolutionarily conserved, with functions stretching across the animal and plant phyla [10]. Although parochially known and studied as a neurotransmitter, with critical cognitive and behavioral functions in humans, 5-HT has numerous important peripheral functions in the gut, vasculature, immune system, and at wound sites [11-16]. Serotonin is synthesized in a two-step reaction from the amino acid L-tryptophan. The first and rate-limiting step in 5-HT synthesis is catalyzed by tryptophan hydroxylase (TPH), which is represented by neuronal (TPH2) and non-neuronal (TPH1) isoforms. Serotonin exerts its actions through a repertoire of greater than 15 different receptor proteins, belonging to seven discreet families. Six of the families of 5-HT receptors are G-protein-coupled, including G_i : 5-HT₁, G_s : 5-HT_{4,6,7}, and $G_{q/11}$: 5-HT_{2,5}. 5-HT₃ is uniquely a ligand-gated cation channel, related to the nicotinic acetylcholine receptor. Another major player within the 5-HT system is the 5-HT reuptake transporter (SERT), which is involved in the uptake and clearance of extracellular 5-HT.

Mammary epithelial homeostatic mechanisms ensure normal tissue function during dramatic changes associated with pregnancy, lactation and involution. Serotonin is an integral part of this epithelial homeostatic system. In part, breast cancers arise through dysregulation of epithelial homeostatic systems [17,18].

Regulation of epithelial homeostasis by 5-HT is not exclusive to the mammary epithelium. Serotonin has been implicated in epithelial homeostasis of the lung, pancreas, liver and prostate. Moreover, dysregulation of 5-HT systems in these epithelia are associated with various pathologies, including cancer progression [19-29]. Consequently, alteration of local 5-HT signaling may be a common feature of cancer progression in epithelial tumors.

In these studies, we present the first analysis of the mammary 5-HT system in human breast cancer. Our results show extensive 5-HT signal modifications contributing to the cancer phenotype. These results provide a new theoretical framework for studying 5-HT signaling in a variety of epithelial cancers.

Materials and methods

Subjects

Primary human mammary epithelial cells (pHMEC), obtained from reduction mammoplasty under Institutional Review Board approval, were a generous gift from Eric R. Hugo at The University of Cincinnati; cell lines and anonymous tissue microarray specimens purchased from the National Cancer Institute were considered to be exempt. The research carried out in this article is in compliance with the Declaration of Helsinki.

Cells and media

Primary human mammary epithelial cells (pHMEC) were prepared using a modification of previously described protocol [30]. Briefly, excised human mammary tissue was finely minced, transferred to conical tubes, and digested overnight at 37°C in M199 media containing 2.5 mg/ml BSA (Sigma-Aldrich, St. Louis, MO, USA), 0.1% collagenase type III (Worthington Biochemical Corporation, Lakewood, NJ, USA) and antibiotic-antimycotic (Invitrogen, Carlsbad, CA, USA). Digested tissue was pelleted by centrifugation, washed in phosphate buffered saline (PBS), and either plated in the pHMEC media (see below) or frozen back for later use.

All the cell lines used in the aforementioned studies were procured from the American Type Culture Collection (ATCC), and used within 10 passages after acquisition. MCF10A media consisted of the following: DMEM-F12 50:50 (Invitrogen) supplemented with 5% horse serum, 2 mM L-glutamine, 10 µg/ml insulin (Sigma-Aldrich), 20 ng/ml EGF (Upstate Biotechnology, Waltham, MA, USA) 0.5 µg/ml hydrocortisone and antibiotic/antimycotic (Invitrogen). pHMEC media contained DMEM-F12 50:50, 5% FBS (Hyclone, Logan, UT, USA), insulin (Sigma-Aldrich), hydrocortisone (Sigma-Aldrich), EGF (Upstate), 1 ng/ml cholera toxin (Sigma-Aldrich) (except where noted) and antibiotic-antimycotic (Invitrogen). MDA-MB-231 cells were cultured in DMEM (Invitrogen) supplemented with 10% FBS, L-glutamine and antibiotic-antimycotic (Invitrogen). T47D cells were grown in same media as MDA-MB-231 with the addition of 5 µg/ml of insulin. MCF7 cells were grown in media consisting of DMEM-F12 50:50 (Invitrogen) supplemented with 10% FBS, L-glutamine, 1 mM sodium pyruvate (Invitrogen), 1× concentration of non-essential amino acids (Invitrogen), and antibiotic-antimycotic (Invitrogen).

Immunohistochemistry and immunofluorescence

Paraformaldehyde fixed paraffin embedded mouse mammary gland sections and tissue microarray sections were deparaffinized in xylene and rehydrated in decreasing concentrations of ethanol from 100% to 50%. Endogenous peroxidases were blocked by incubation in 3% H₂O₂ at room temperature for 30 min. Antigen retrieval was performed using borate buffer pH = 8.5 (80 mM boric acid, 20 mM sodium borate) in a microwave (60% power) twice for 5 min. Sections were then permeabilized using 0.2% Triton X-100 (Sigma-Aldrich) in PBS for 30 min followed by normal serum blocking for 1 h at room temper-

ature and incubation in primary antibody (sheep anti-TPH 1:100 Abcam, Cambridge, MA, USA) overnight at 4°C in a humid chamber. The immune reaction was visualized using HRP-conjugated secondary antibody (Sigma-Aldrich) and ABC-DAB system (Zymed, S. San Francisco, CA, USA; and Vector Labs, Burlingame, CA, USA, respectively).

Cells grown on coverslips were fixed in 4% paraformaldehyde. Cells were permeabilized in 0.1% Triton X-100, incubated in borate buffer overnight at 75°C and incubated in primary antibodies overnight at 4°C. Images were collected using a Zeiss LSM510 Confocal Microscope, Göttingen, Germany) using the Zeiss LSM Image Software version 3.5, Munich, Germany)

RT-PCR and Western blot

Total cellular RNA was extracted using TRI-REAGENT (Molecular Research Center, Inc., Cincinnati, OH, USA) according to the manufacturer's instructions. Two µg of RNA was subjected to reverse transcription by standard methods. One µl cDNA was used for 25 µl PCR reactions. For primer information, please see Table S1 in Additional data file 1.

Cellular protein extracts were prepared using the Cell Lysis kit (Cell Signaling Technology, Boston, MA, USA) as per the manufacturer's instructions. Proteins were quantified using Lowry assay and equal amounts were separated on SDS-PAGE gel. After transferring the proteins to nitrocellulose membrane, the specific proteins were visualized using specific antibodies and detected using HRP tagged secondary antibodies.

Proliferation assay and Trypan blue assay

After experimental treatments, cell proliferation was measured by colorimetric assay based on cleavage of a tetrazolium salt 3-(4,5-dimethylthiazol-2-yl)-5-(3-carboxymethoxyphenyl)-2-(4-sulfophenyl)-2H-tetrazolium (MTS) by mitochondrial dehydrogenase enzyme present in proliferating cells (Cell titer 96 - Promega, Madison, WI, USA). For trypan blue experimental procedures, the cells were gently trypsinized and re-suspended in 0.2% trypan blue solution and counted using a hemocytometer.

Tissue microarray

Human breast cancer tissue microarrays were purchased from The National Cancer Institute (Bethesda, MD, USA [31]. The array has 288 cores in quadruplicate with tissue matched controls. A modified histochemical-score (H-score) [32,33] system was used to evaluate the breast cancer tissue microarrays. An H-score comprises of a semi-quantitative assessment of both the intensity of staining and percentage of positive mammary epithelial cells. For intensity, a score of 0 to 3, corresponding to negative, weak, positive and strong positive was recorded blindly by two independent observers with final scores resulting in an average. It was not necessary to correct the staining intensities to account for the percentage

of positive cells because of uniform epithelial staining within given specimens.

Statistics

Each experiment in cultured cells and tissues was replicated three or four times, and representative results are shown in figures. Differences in means were tested by ANOVA with Tukey's post-hoc test for multiple groups, and Student's T-test or an equivalent non parametric test (Mann-Whitney U test) for comparisons of two means. Significance was accepted for $P < 0.05$.

Results

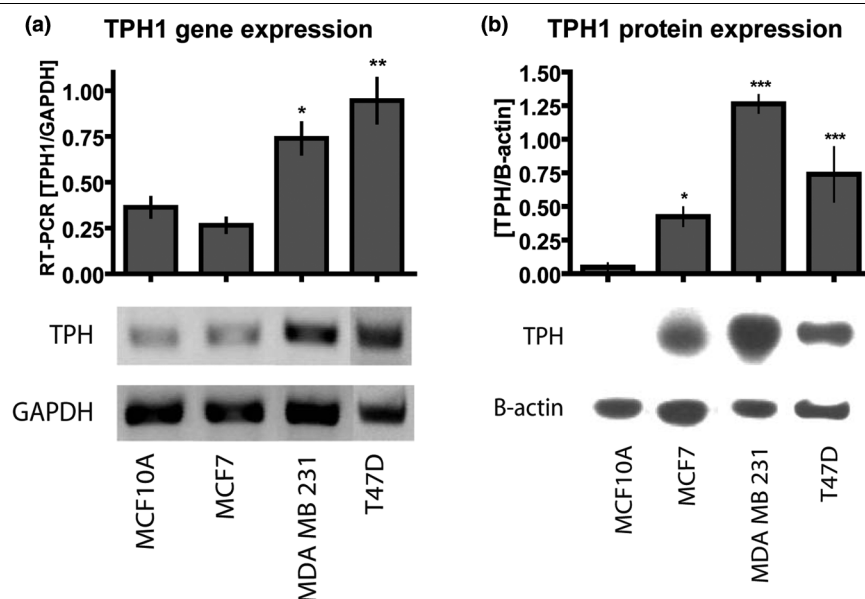
Elevated TPH1 in human breast cancer cells

TPH1 catalyzes the first and the rate-limiting step in 5-HT biosynthesis. We have previously shown that TPH1 is expressed in the mammary gland and TPH1 expression directly correlates with 5-HT production [5,6]. We therefore addressed the question of whether there were any changes in 5-HT synthetic capacity of breast cancer cells. Toward this end, we analyzed TPH1 mRNA levels by reverse-transcriptase-couple polymerase chain reaction (RT-PCR) in different human breast cancer cells (MCF7, MDA-MB-231 and T47D), and compared them to that of non-transformed human mammary epithelial cells (MCF10A). The mRNA levels of TPH1 were elevated more than two-fold in MDA-MB-231 and T47D cells compared to that of MCF10A cells (Figure 1A). The TPH1 protein was analyzed by western blot in extracts of these cells and was significantly elevated not only in MDA-MB-231 and T47D, but also in MCF7 cells, demonstrating that 5-HT biosynthetic capacity was increased in all breast cancer cell lines tested, with the highest level of expression occurring in MDA-MB-231 cells (Figure 1B). This was contrary to what occurred in MCF10A cells, where TPH1 protein was near the lower limit of detection by western blotting (Figure 1B). An additional factor that regulates cellular exposure to 5-HT is SERT, which pumps 5-HT back into the cells contributing to the recycling and controlling the extracellular concentration of 5-HT. We assessed SERT protein levels and found them to be similar among these cell lines [see Figure S1 in Additional data file 1].

Nonlinear association of TPH1 with breast cancer progression

To gain insight into the possible association between altered 5-HT synthesis and breast cancer progression in actual human tumors, we analyzed TPH1 in histological specimens. The specimens used were human breast cancer tissue microarrays acquired from The National Cancer Institute Cooperative Breast Cancer Tissue Resource [31]. Quadruplicate samples of 288 cores comprised the array, which included both tissue-matched non-cancer and non-diseased controls, along with cell line controls. Figure 2A shows a representative section of normal human breast tissue from an array at two different magnifications, stained for TPH1. In normal breast tissue the epithelium was dispersed in an orderly fashion within the stroma,

Figure 1



TPH1 expression in non-transformed and breast cancer cells. **(A)** Bar graphs representing TPH1 mRNA levels in indicated cell lines as detected by semi-quantitative RT - PCR reactions and normalized to GAPDH. Shown below is a representative picture of resulting PCR reactions. **(B)** Bar graphs and electrophoretic bands showing TPH1 protein levels in the extracts of indicated cells normalized to β -actin. Error bars in (A) and (B) represent \pm SEM. * $P < 0.05$, ** $P < 0.01$ and *** $P < 0.001$ (one-way ANOVA) in comparison to MCF10A cells.

and the epithelium stained distinctly for TPH1. Scattered blood vessel-associated cells were also positive for TPH1 within the stroma. A modified H-score [34,35] was used by blinded examiners to score the stained tissues. Sections were scored on a scale of 0 to 3 with respect to TPH1 staining separately within epithelia and stroma, using a key generated from among the array sections [see Figure S2 in Additional data file 1]. Cores of cell lines on the array (MCF7 and T47D) validated the scoring for TPH1. Similar to the expression pattern we had seen previously in the cell lines (Figure 1), TPH1 staining intensity was significantly elevated in the cancer cell lines, compared with normal breast tissue (Figure 2B).

The tissue specimens on the array were all from primary tumor sites, and were scored based on a variety of pathological criteria. An obvious and clinically meaningful characterization is reproductive steroid receptor (estrogen receptor (ER) and progesterone receptor (PR)) status. Levels of TPH1 were lower in ER negative cases, compared with ER positive cases. There was no difference in TPH1 levels associated with PR status of the breast cancers (Figure 2C and 2D, respectively).

Segregating the cases crudely according to tumor size and according to T-stage (another size-based classification) showed an inverse relationship between tumor size (>20 mm) and TPH1 staining [see Figure S3 in Additional data file 1]. When the breast cancer cases were sorted according to invasion and progression criteria, TPH1 staining showed a set of nonlinear relationships (Figure 3). Staining for TPH1 was lower in locally-invasive (IN+) cases compared with non-inva-

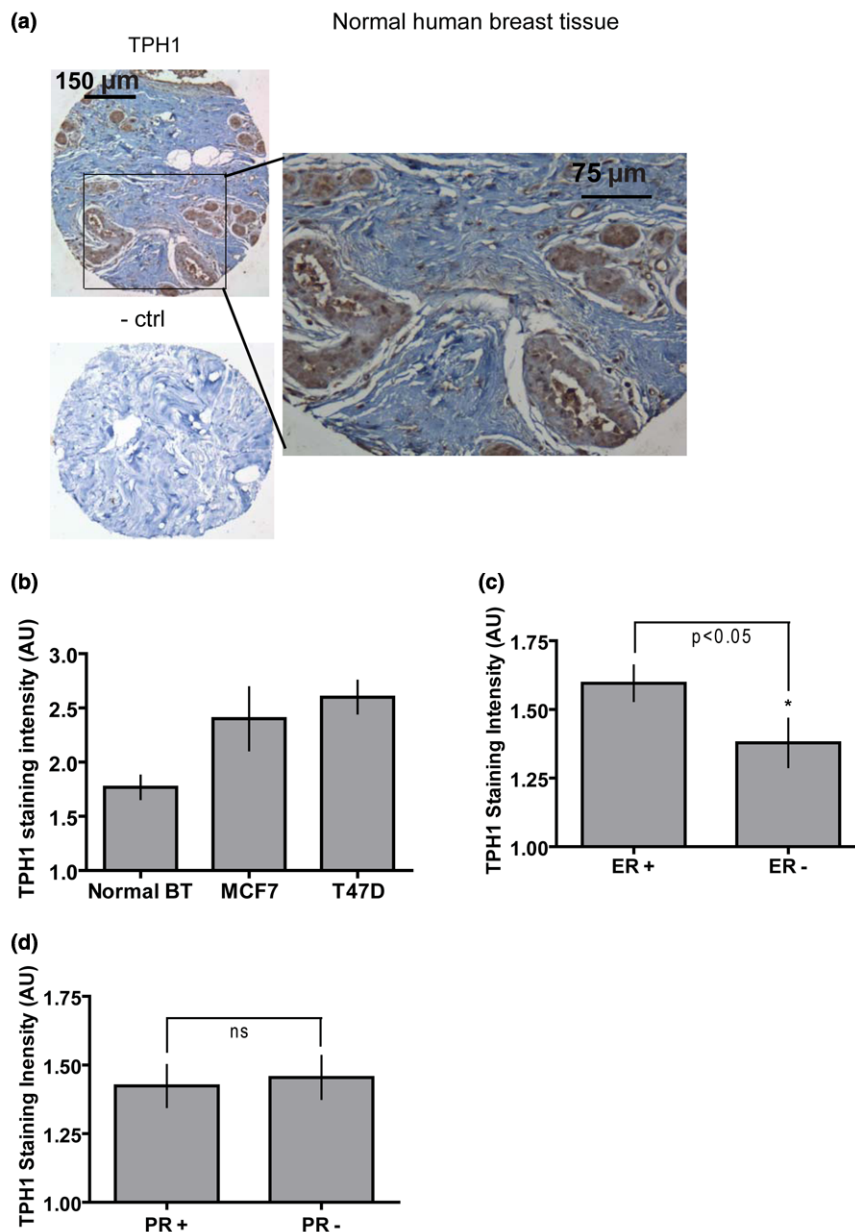
sive samples (NI), which included both normal tissue and ductal carcinoma *in situ* (DCIS). However, TPH1 was high in cases of tumors with distant metastases (IN-Mets) (Figure 3A). The relationship of TPH1 staining to progression was clearest among samples sorted according to N-stage (extent of lymph node involvement) (Figure 3B). Staining for TPH1 was significantly decreased in the N1 staged tumors (one to three ipsilateral nodes). However, with progression to N1a/b stage (micrometastases to four or more nodes, including extension beyond the node capsule) and higher stages (N2/3), the TPH1 staining was elevated. Representative core sections from each sorted category are depicted in Figure 3C.

5-HT receptor expression in association with breast cancer progression

To determine the expression of 5-HT receptor mRNA profiles, we performed a comprehensive analysis by RT-PCR (Figure 4). In addition to HTR7, which has been studied in detail in the breast [6,7], we report for the first time the expression of HTR1D, 2B and 3A in an untransformed cell line and primary human mammary epithelial cells (MCF10A and pHMEC) (Figure 4). The HTR1D and 2B were also present in all breast cancer cells tested and, using human hypothalamus as the reference level, expression in the cancer cells was elevated compared to the untransformed cells (Figure 4Bi and 4Biv).

Among the receptor isoforms that were expressed differentially in breast cancer cell lines, HTR3A was markedly down-regulated in all of the cancer lines (Figure 4A and 4Bvi). Three receptor types were upregulated in MCF7 to levels that were

Figure 2



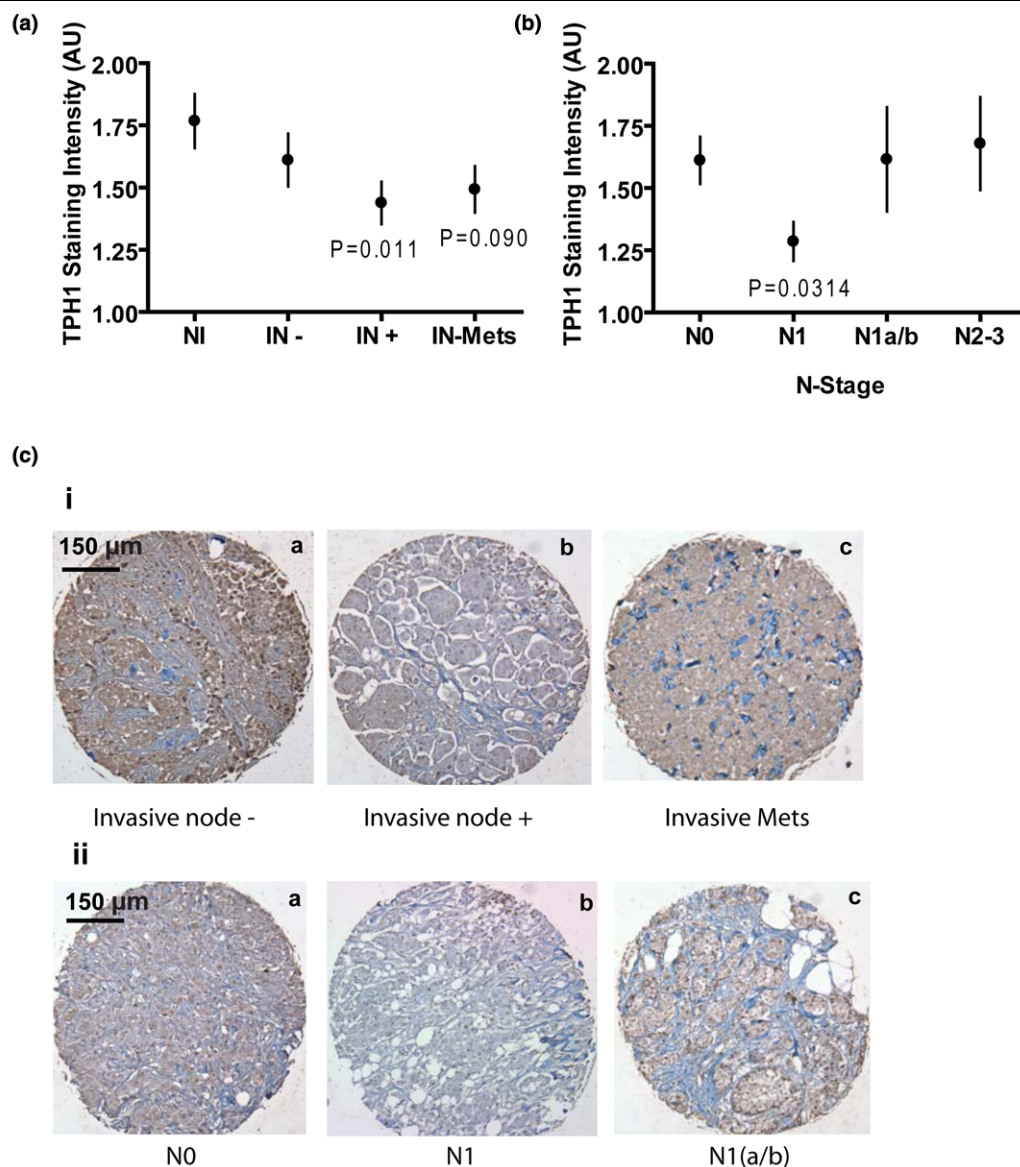
Changes in TPH1 signal in human breast tumors. **(A)** Representative image of normal human breast tissue (BT) from the tissue microarray stained for TPH1 (brown) and counterstained with hematoxylin. A corresponding no primary antibody control section is depicted on the bottom left. Magnified image shows details of epithelial staining and occasional positive cells in stroma. **(B-D)** Results depicting quantification of TPH1 immunostaining from blindly scored tissue microarray sections. The section scores for TPH1 were sorted as per human cancer cell line core **(B)**, estrogen receptor (ER) status **(C)** and progesterone receptor (PR) status **(D)**. TPH1 staining was reduced in ER negative tumors, but unaffected by PR status. Error bars represent \pm SEM. * $P < 0.05$ in comparison with normal BT for **(A)**.

at least 40% of the brain (1E, 1F, 2C) (Figure 4A, Bii, iii and 4Bv). MDA-MB-231 expressed 1F, and T-47D expressed both 1F and 2C at modest levels relative to the brain (Figure 4B). No detectable transcripts for HTR1A, 1B, 2A, 4, 5A and 6 were found in the untransformed (MCF10A and pHMECs) or breast cancer cells (MCF7, T47D and MDA-MB-231) (Figure 4A) and [see Figure S4 in Additional data file 1]. HTR7 was

expressed in MCF10A [6,7], pHMEC and MDA-MB-231 cells. In contrast, MCF7 and T47D, both of which are ER positive cancer cells, lacked any detectable HTR7 transcript (Figure 4A).

To address the question of 5-HT receptor profiles in breast cancers, we examined expression using the *Oncomine* data-

Figure 3



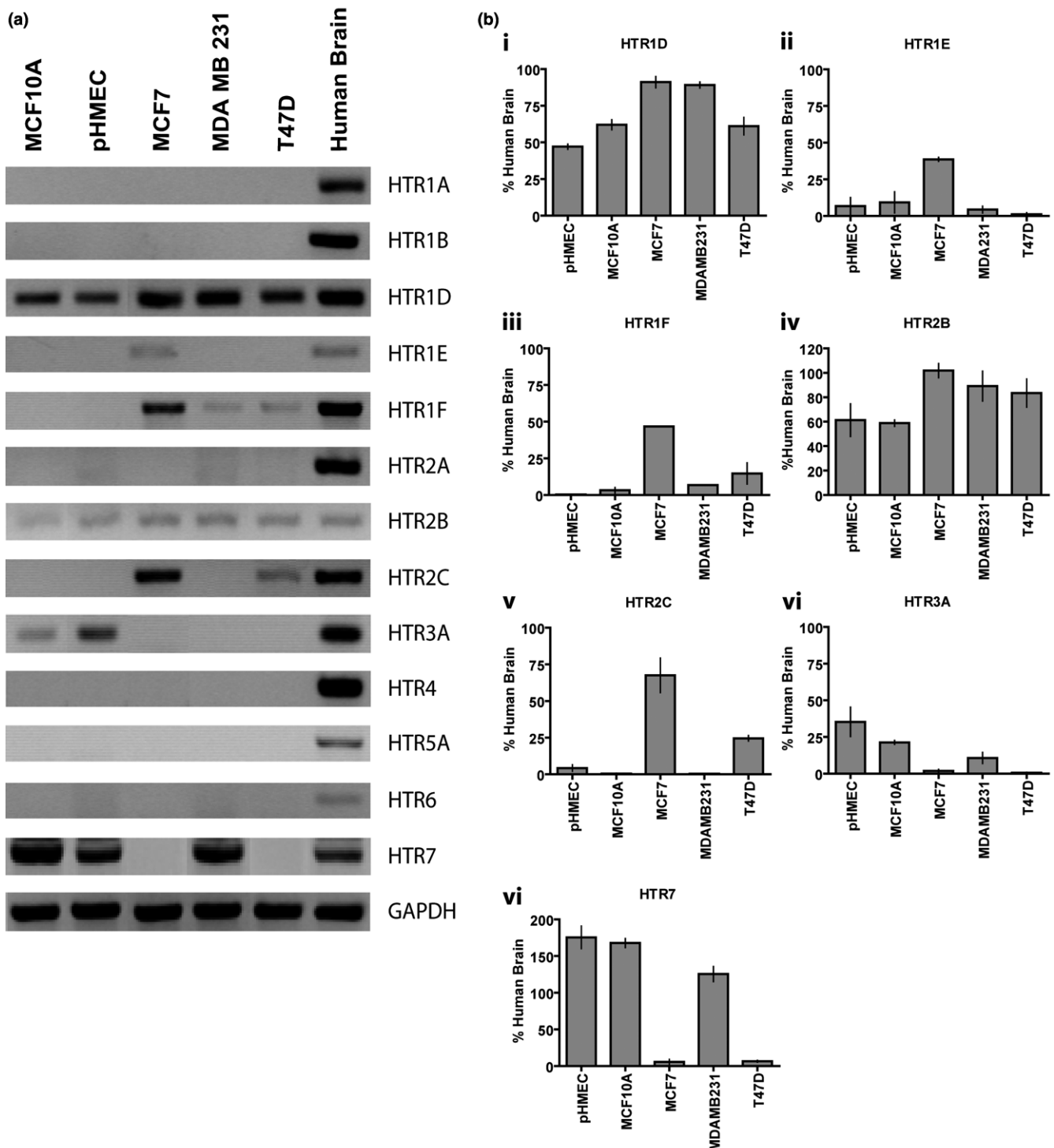
Nonlinear association between TPH1 and cancer progression. **(A-B)** Results depicting quantification of TPH1 immunostaining from blindly scored tissue microarray sections. Data were sorted based on the indicated criteria. Data were analyzed by one-way ANOVA with *P*-values as noted in comparison with NI for (A) and N0 for (B). Error bars represent \pm SEM. (A) TPH1 scores in samples identified as non-invasive (NI); invasive, node-negative (IN-); invasive, node-positive (IN+); and invasive with distant metastases (IN-Mets). (B) Human breast cancer tissue sections scored for TPH1 were sorted as per different stages of nodal metastasis (N-stage: N0, no regional lymph node involvement; N1, Mets to movable ipsilateral nodes; N1a/b, Mets up to 20 mm to 4 or more nodes with extension beyond node capsule; N2-3, Mets to ipsilateral nodes that are fixed to one another or to other structures and to internal mammary lymph nodes). **(C)** Representative microarray sections stained for TPH1 from sorted groups as indicated below each image. Brown/red dye indicates TPH1 stain, blue is hematoxylin.

base [36,37] to search preliminarily for patterns of 5-HT receptor gene expression (Table 1). Among all of the receptor isoforms, HTR1B, 1D, 1F, 2A, 2B, 2C, 3, 4, 5A, 7 were found to be expressed in breast tissues (cancer and other). Of these receptors, the expression levels of HTR1D, 2A and 3 were unchanged in the archived studies (data not shown). The HTR1D pattern was in accord with the breast cancer cell lines (Table 1). HTR1B and 2A were not expressed in either

pHMEC or established breast cell lines (Figure 4), which implies that expression in tumor specimens represents the presence of stromal or vascular elements, which typically express HTR1B and 2A in smooth muscle cells [38,39].

A significant subset of 5-HT receptor mRNAs (HTR1F, 2B, 4 and 7), were significantly decreased in ER negative tumors, relative to ER positive tumors (Table 1). These observations

Figure 4



Difference in 5-HT receptor isoform gene expression between non-transformed (pHMECs and MCF10A) and breast cancer cells (MCF7, MDA-MB-231 and T47D). **(A)** Representative RT-PCR reactions (mRNA transcripts) for indicated 5-HT receptors, in cells as indicated at the top. Human brain (hypothalamus) is used as a reference sample for each receptor. For primer information please see Table S1 in Additional data file 1. **(B)** Densitometric quantification (semi-quantitative) of transcript levels relative to human brain reference samples (100%). Each column represents average with error bars representing \pm SEM of at least three independent reactions.

Table 1

Modification of 5-HT receptor expression with human breast cancer status - Oncomine study

Study Type	Receptor Type	Variable	Direction of Change	P-value (T-test)	Oncomine data source
Tumor grade/stage	HTR2B	Normal vs Breast Carcinoma	Higher in Cancer	0.002	Richardson et al. [77]
		Tumor stage N0-N3	Increase with stage	0.006	Bittner et al. [78]
	HTR2C	Tumor stage N0-N3	Increase with stage	0.009	Yu et al. [79]
	HTR7	Grade I to III	Increase with grade	<0.0001	Ivshina et al. [80]
				0.0001	Miller et al. [81]
<0.01	Genestier C et al. [82]				
More aggressive vs Less aggressive breast cancers	HTR1F	5 yrs recurrence- vs 5 yrs recurrence+	Higher in recurring tumors	0.005	VantVeer et al. [83]
	HTR2B	Lymph node- vs Lymph node+	Higher in lymph node +	0.006	Chin et al. [84]
	HTR2C	Primary vs Metastatic tumors	Higher in metastatic	0.001	Bittner et al. [78]
		Her2/neu- vs Her2/neu+	Higher in Her2/neu+	0.00057	Minn et al. [85]
				0.002	Hess KR et al. [86]
	HTR5A	P53-mutant vs p53-WT	Higher in p53-mutant	<0.0001	Miller et al. [81]
HTR7	P53-mutant vs p53-WT	Higher in p53-mutant	0.008	Miller et al. [81]	
Steroid receptor status	HTR1F	ER+ vs ER-	Higher in ER+	0.0001	Sotiriou et al. [87]
	HTR2B	ER+ vs ER-	Higher in ER+	0.00014	Wang et al. [88]
				0.0004	Sotitiou et al. [87]
				0.00014	Desmedt et al. [89]
		Luminal vs Basal Tumors	Lower in Basal (ER-)	<0.0001	Farmer et al. [90]
	HTR4	ER+ vs ER-	Higher in ER+	0.001	Chi et al. [84]
	HTR7	ER+ vs ER-	Higher in ER+	<0.0001	VanderVijer et al. [91]
0.00087				Bittner et al. [78]	
Human Mammary Cell lines	HTR2B	HMEC-Normal (GFP) vs c-Myc transformation	Higher in c-Myc transformed cells	0.001	Bild AH et al. [92]
	HTR7	HMEC-Normal (GFP) vs activated H-Ras	Higher in H-Ras cells	0.00028	Bild AH et al. [92]

Receptor mRNAs encoding 5-HT_{1F} (HTR1F), 5-HT_{2B} (HTR2B), 5-HT_{2C} (HTR2C), 5-HT₄ (HTR4), 5-HT_{5A} (HTR5A) and 5-HT₇ (HTR7) sorted as per tumor stage/grade, ER status, tumor aggressiveness and human mammary cell line transformation. Abbreviations: (ER+) - Estrogen Receptor Positive, (ER-) - Estrogen Receptor Negative. (HMEC) - human mammary epithelial cells.

were confirmed by multiple independent studies. HTR2B expression was also lower in basal tumors (ER negative), compared with luminal tumors, which are most commonly ER positive (Table 1).

Expression levels for HTR1F, 2B, 2C, 5A and 7 showed overall increases in breast cancers. HTR2B, which is expressed in untransformed human mammary epithelium (Figure 4), was elevated in carcinomas and was found to increase with tumor stage, and concomitantly was higher in lymph node-positive tumors as compared to node-negative tumors (Table 1). This observation was supported by a study of HMECs, showing c-

Myc transformation induced an increase in HTR2B expression (Table 1). Similar to HTR2B, HTR2C showed an increase in expression with tumor stage. The HTR2C pattern was in accord with the increased expression observed in human breast cancer cell lines (Figure 4). Analogously, HTR2C expression was found to be higher in metastatic and Her2/neu-overexpressing tumors. The expression of HTR7 increased with tumor grade, and was higher in p53-mutated tumors (Table 1). This observation also was supported by a study of HMECs, showing H-Ras transformation induced increases in HTR7 expression. Other 5-HT receptor expression changes in breast cancers included HTR1F (higher in

recurring tumors) and HTR5A (higher in p53-mutant) (Table 1).

The variety of examples showing aberrant expression of 5-HT receptors in breast cancers suggests that multiple modifications of 5-HT signaling can contribute to the loss of tissue homeostasis during tumor progression.

5-HT-induced apoptosis and morphological transition

Our previous studies on 5-HT physiology in mammary gland cells revealed the critical roles of 5-HT in regulating epithelial homeostasis during involution, which is characterized by epithelial tissue regression [5-7,40,41]. One expected effect of elevated 5-HT activity in the normal breast is widespread apoptotic cell death. Hence, we tested the effects of 5-HT on apoptosis in mammary epithelial cells. The pHMEC and MCF10A cells, as expected, showed significant increases in active caspase 3 staining when treated with 5-HT, as compared to untreated controls (Figure 5A). In contrast, all of the breast cancer cell lines were highly resistant to 5-HT-induced apoptosis under similar experimental conditions.

In response to 5-HT, MDA-MB-231 cells underwent dramatic changes in their morphological phenotype, assuming exaggerated fibroblastic spindle morphologies (Figure 5B). In the presence of 5-HT, the MDA-MB-231 cells projected long axial appendages, which inconsistently contacted neighboring cells, sometimes crossing cells without apparent interactions. Previously, similar changes in morphology of MDA-MB-231 cells have been associated with exaggerated motility and invasiveness [42,43]. No similarly obvious phenotypic effects of 5-HT treatment were observed in MCF10A, pHMEC, T47D or MCF7 cells, suggesting that this response to 5-HT may be limited to the most aggressively-transformed breast cancer cells, which have undergone an epithelial-mesenchymal transition (Figure 5B).

Serotonin inhibits growth of untransformed human mammary epithelial cells via the 5-HT₇ receptor

Because breast cancer cells were resistant to 5-HT-induced apoptosis, we decided to explore its impact on proliferation in these cells. Treatment with 5-HT for 36 h (in serum-containing medium) resulted in significant inhibition of proliferation in both pHMECs (approximately 55%) and MCF10A (approximately 37%), compared to untreated controls (Figure 6Ai and 6ii). This observation was verified by a standard trypan blue assay under similar experimental conditions [see Figure S5 in Additional data file 1]. Methysergide (MS), a broad spectrum 5-HT receptor antagonist, attenuated growth inhibition by 5-HT in pHMECs and MCF10A (Figure 6Ai and 6ii). Our previous study showed that mammary epithelial cells express the 5-HT₇ receptor [6] and stimulation of this receptor results in cyclic AMP (cAMP)-mediated activation of both protein kinase A (PKA) and p38 mitogen activated protein kinase (p38 MAPK) [7]. Treatment of MCF10A cells with a 5-HT₇ antagonist

(SB269970 [SB]) resulted in near complete extinction of 5-HT inhibition of proliferation (Figure 6Aiii). In addition, specific inhibition of p38 MAPK blocked the inhibition of proliferation (Figure 6Aiv), however PKA inhibition had no significant effect on proliferation. These data suggest that 5-HT₇-mediated p38 MAPK activation may, in part, be responsible for growth inhibitory actions of 5-HT in mammary epithelial cells.

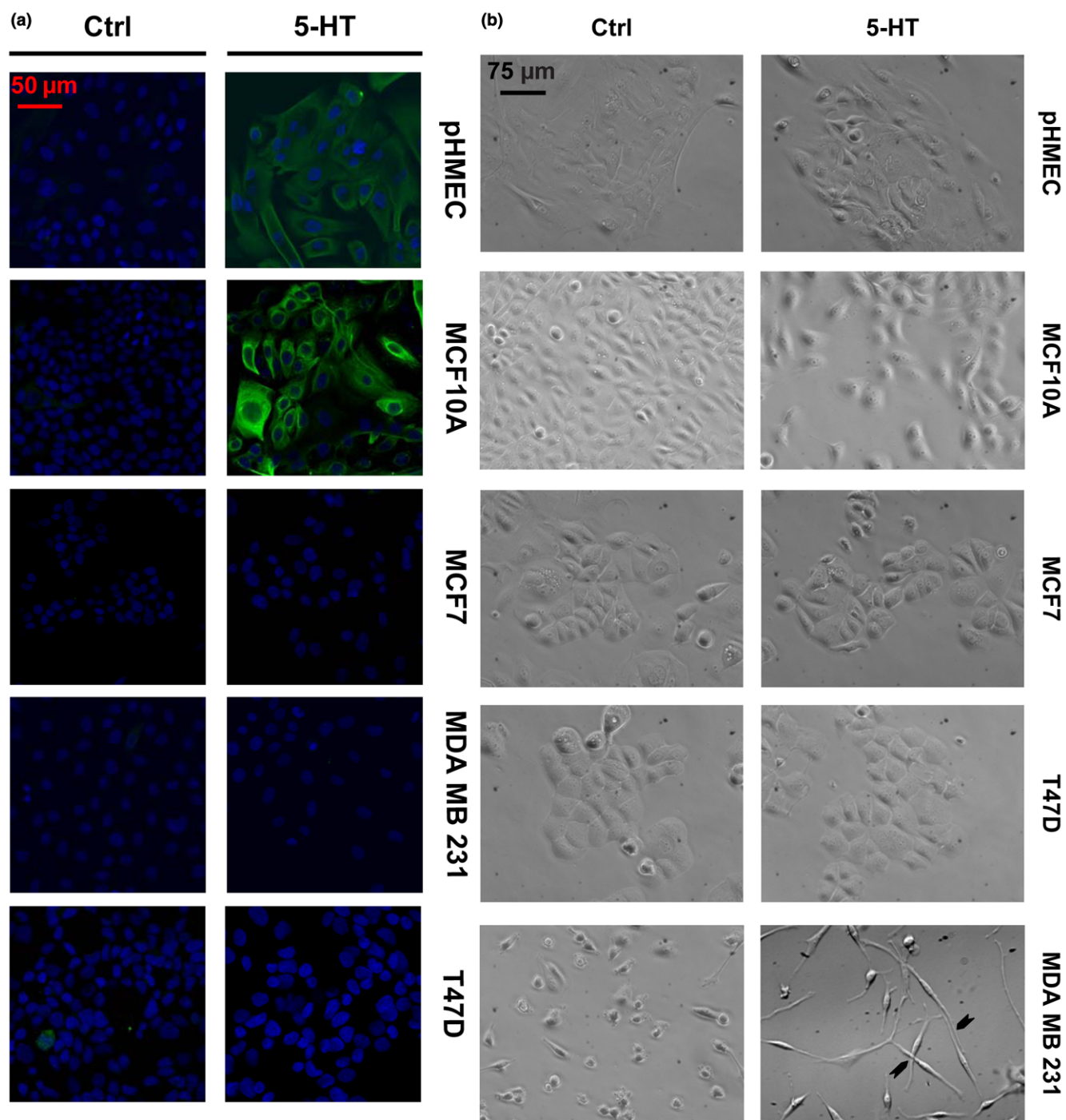
Breast cancer cells are refractory to the growth inhibitory response to 5-HT

It seemed paradoxical that breast cancer cell lines had an increased capacity for 5-HT biosynthesis (Figure 1), while 5-HT acted as a growth-inhibitor in mammary epithelial cells (Figure 6A). The juxtaposition of these findings suggested that the breast cancer cells might be resistant to growth inhibition by 5-HT. Hence, we tested the effect of 5-HT on proliferation of breast cancer cells. Confirming the previous result, 5-HT, in a concentration dependent manner, inhibited proliferation of mammary epithelial cells (pHMECs and MCF10A) (Figure 6B). However, breast cancer cells (T47D and MDA-MB-231) responded differently to 5-HT. The T47D cells were resistant to 5-HT, which required five- to ten-fold higher concentrations to show growth inhibition (Figure 6Bi). However, MDA-MB-231 cells were not only resistant to growth inhibition, but also, were significantly stimulated by 5-HT at low concentrations (Figure 6Aii). The altered response of MDA-MB-231 cells to 5-HT was seen in spite of the presence of strong expression of the HTR7 (Figure 4A and 4Bvi). To determine whether differences in cell death could account for the effects of 5-HT on proliferation, we measured lactate dehydrogenase (LDH) levels in the media, which is indicative of lysed/dead cells. In both the MCF10A and MDA-MB-231 cells, the LDH levels in the media remained unchanged by 36 h after 5-HT treatment [see Figure S6 in Additional data file 1]. At later time points (72 h, see Figure 5), there was substantial apoptosis in the untransformed (i.e., MCF10A) cells and pHMECs, which implied that these cells underwent growth arrest early, followed by apoptosis if 5-HT signaling was sustained.

Altered 5-HT₇ signaling in human breast cancer cells

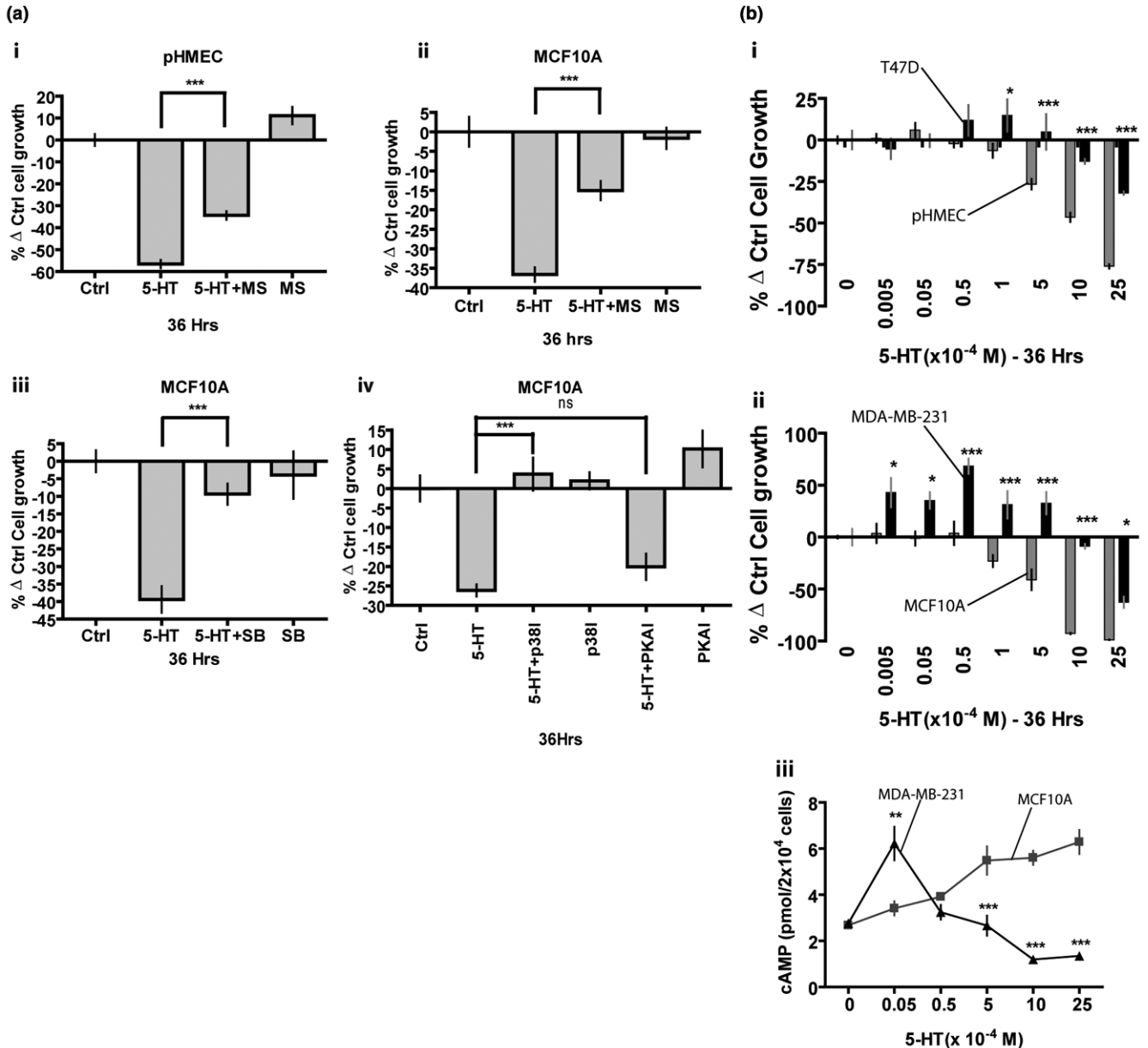
Given that growth inhibition by 5-HT occurs through the 5-HT₇ receptor, resistance to growth inhibition in breast cancer cells could be explained by: 1] a loss of 5-HT₇ receptor expression (Figure 4A and 4Bvi), 2] expression of 5-HT receptors that counteract 5-HT₇ (that is, G_i-coupled), (Figure 4A, Bii and 6Biii) or 3] changes in signaling downstream of 5-HT₇; and these possibilities are not mutually exclusive. Expression of HTR7 in MDA-MB-231 cells was greater than in pHMEC and MCF10A, yet MDA-MB-231 cells showed significant differences in their response to 5-HT (Figure 6Bii). Therefore, we sought to determine whether G_s-coupled signaling, which is downstream of 5-HT₇, was altered in MDA-MB-231. As previously described [6], MCF10A cells showed a 5-HT concentration-dependent increase in cAMP accumulation (Figure 6Biii). In MDA-MB-231 cells, the maximum cAMP activation was

Figure 5



5-HT influence on apoptosis and morphological transition in breast cells. **(A)** Staining for apoptosis marker cleaved caspase-3 (green), counter-stained for nuclei (blue) for the indicated cells with or without 5-HT (7.5×10^{-4} M) treatment for 72 h in serum free media. **(B)** Phase-contrast images of the indicated cells with or without 5-HT (7.5×10^{-4} M) treatment for 72 h. Arrowheads point to appendages at intersections between adjacent cells.

Figure 6



Growth inhibition by 5-HT in non-transformed human mammary epithelial cells is via 5-HT₇ receptor, and breast cancer cells are refractory to growth inhibition by 5-HT. **(Ai-iv)** Proliferation assay (MTT) for detecting growth of primary human mammary epithelial cells (pHMECs) **(Ai)** and MCF10A **(Aii-iv)** after a period of 36 h following indicated treatments. Graphs are plotted as percent change from control (Ctrl - untreated) group. Error bars represent \pm SEM. $***P < 0.001$ (one-way ANOVA). **(Ai and Aii)**, depict indicated cells treated with 5-HT (7.5×10^{-4} M) in presence or absence of broad-spectrum 5-HT receptor antagonist methysergide (MS) ($60 \mu\text{M}$). **(Aiii)** depicts MCF10A cells treated with 5-HT (7.5×10^{-4} M) in presence or absence of specific 5-HT₇ receptor antagonist SB 269970 (SB) ($80 \mu\text{M}$). **(Aiv)** depicts MCF10A cells treated with 5-HT (7.5×10^{-4} M) in presence or absence of specific inhibitors of signaling proteins p38 MAPK (SB203580 [p38I]) ($20 \mu\text{M}$) and PKA (H89 [PKAI]) ($10 \mu\text{M}$). **(Bi-ii)** depict a proliferation assay (MTT-viable count) for detecting cell growth after 36 h of treatment with indicated 5-HT concentrations. Graphs are plotted as percent change from respective controls (untreated group). Error bars represent \pm SEM. $*P < 0.05$, $**P < 0.01$, $***P < 0.001$ (Two-way ANOVA). **(Bi)** depicts comparison of pHMECs (grey bars) and T47D (black bars) cells response to indicated 5-HT concentrations. **(Bii)** depicts comparison of MCF10A (grey bars) and MDA-MB-231 (black bars) cells response to indicated 5-HT concentrations. **(Biii)** depicts measurements of intracellular cAMP accumulation in MCF10A (grey squares and line) and MDA-MB-231 (black triangle and line) cells in response to 5-HT stimulation as indicated. Error bars in Biii represent \pm SEM. $**P < 0.01$, $***P < 0.001$ (Two way ANOVA).

observed at low concentrations of 5-HT, followed by a progressive decline in cAMP to levels below that of controls. Peak cAMP accumulation was identical in both cells (Figure 6Biii). These data imply altered signaling events associated with 5-HT₇.

Discussion

Regulation of mammary epithelium involves processes such as epithelial proliferation, invasion of stroma and epithelial regression accompanied by extracellular matrix remodeling. Dysregulation of such epithelial regulatory mechanisms are critically involved in the progression of breast cancers [17,18,42,44-46]. The series of studies reported here were undertaken to establish whether there are functionally-relevant associations between local mammary 5-HT signaling and breast cancers. The simple expedient of identifying serotonergic elements by profiling of either mutations or gene expression was not applicable to this problem because of the complexity of the 5-HT receptor systems. This receptor complexity, and the multiple mechanisms by which the ligand concentration is regulated, make it possible for either normal or cancer cells to evolve completely different sets of signaling interactions to achieve common ends. This characteristic amounts to *convergent evolution* of signaling among cancers, and it required us to use a hypothesis-driven set of approaches, combined with hypothesis-driven data mining.

In our previous studies, we showed that the mammary epithelium expresses the TPH1 gene, which is induced during pregnancy, lactation and milk stasis at the onset of involution [5]. Here we have shown by immunostaining that TPH1 is present primarily in the epithelial tissue of mammary glands. An early finding that piqued our interest in the 5-HT system in human breast cancer was the observation that representative breast cancer cell lines showed significantly elevated TPH1 transcript and protein levels. These results were confirmed by staining for TPH1 protein, which showed uniform and elevated TPH1 expression among cancer cell lines. The shift of TPH1 gene expression from the normal tightly-regulated *in vivo* pattern to a state of homogeneous overexpression in breast cancer cells was reminiscent of the general up-regulation of ER in estrogen-sensitive breast cancer cells [47,48]. Whereas ER and PR expression are positively correlated in breast cancers an interesting observation was no effect of PR status on TPH1 levels. However, it has been reported that PR can be independently regulated in breast cancers [49,50]. Hence, it is likely that TPH1 is regulated by ER independent of PR status. Since TPH1 is rate limiting for 5-HT synthesis in mammary epithelial cells, as in other systems [6], breast cancer cells synthesize excess 5-HT, which they may use to support their growth advantages.

To gain insights into the nature of the 5-HT system in human breast tumors, we used tissue microarray and data-mining approaches. Increased TPH1 expression in cancer cell lines

was confirmed on the microarray specimens. An important insight was the observation that there was not a simple linear association between TPH1 expression and cancer stage. Although TPH1 expression was suppressed in primary tumors at early stages, it was increased later in progression. Correspondingly, all of the tissue microarray specimens were harvested from the primary tumor sites of cancers at different stages, but the breast cancer cell lines, which expressed elevated TPH1, were all established from metastasized cells. Therefore, the rebound of TPH1 expression associated with progression may result in metastatic cells that express the highest levels of TPH1.

Carcinogenesis is a complex multistep process, occurring hand-in-hand with metastatic progression. For a normal epithelial cell, there are many internal and external checks and balances that guard against transformation and progression, including cell senescence, apoptosis, appropriate stress responses, and dependence on growth factors and differentiating agents [3,51]. The growth inhibitory effect of 5-HT in the non-transformed mammary epithelium is mediated, in part, through 5-HT₇ receptor signaling. The growth suppression response to 5-HT is supported by our previous observations in TPH1^{-/-} mice, which showed accelerated mammary growth upon prolactin stimulation, and impaired regression during milk stasis [5].

There was a wide variety of changes in 5-HT receptor expression among the cancer specimens and database results. The convergent nature of cancer evolution, in which there are several routes for cancer cells to take while they accumulate advantageous physiological alterations, provides a context for understanding the diversity of these changes. Down-regulation of 5-HT₇ (G_s-coupled), which mediates growth inhibition in untransformed cells, is one route to gain a growth advantage. This particular alteration was seen in MCF7 and T47D cells, and in ER negative and p53-wildtype tumor specimens. Other routes to achieve growth advantage include a) suppression of 5-HT₇ action through induction of G_i-coupled receptors, such as 5-HT_{1E} and _{1F}; b) induction of growth stimulatory 5-HT_{2C} (G_{q/11}-coupled) [52,53] (observed in MCF7, T47D and in human breast tumors); and c) downregulation of 5-HT synthesis itself, as observed in early stages of primary tumor growth. An important observation was the identical 5-HT receptor expression pattern in both examples of untransformed cells (MCF10A and pHMECs). This indicates that in untransformed mammary epithelial cells, 5-HT receptor expression is under tight control, whereas the control of 5-HT receptor expression was aberrant in all breast cancer cells. Sonier *et al.*, [54] previously reported expression of 5-HT_{2A} in MCF7 cells, but we did not observe expression of this receptor in either MCF7 or other breast cancer cells. Given the degree to which receptor expression is labile in breast cancer cells, it is conceivable that the subline in their lab is different from the cells we received from ATCC.

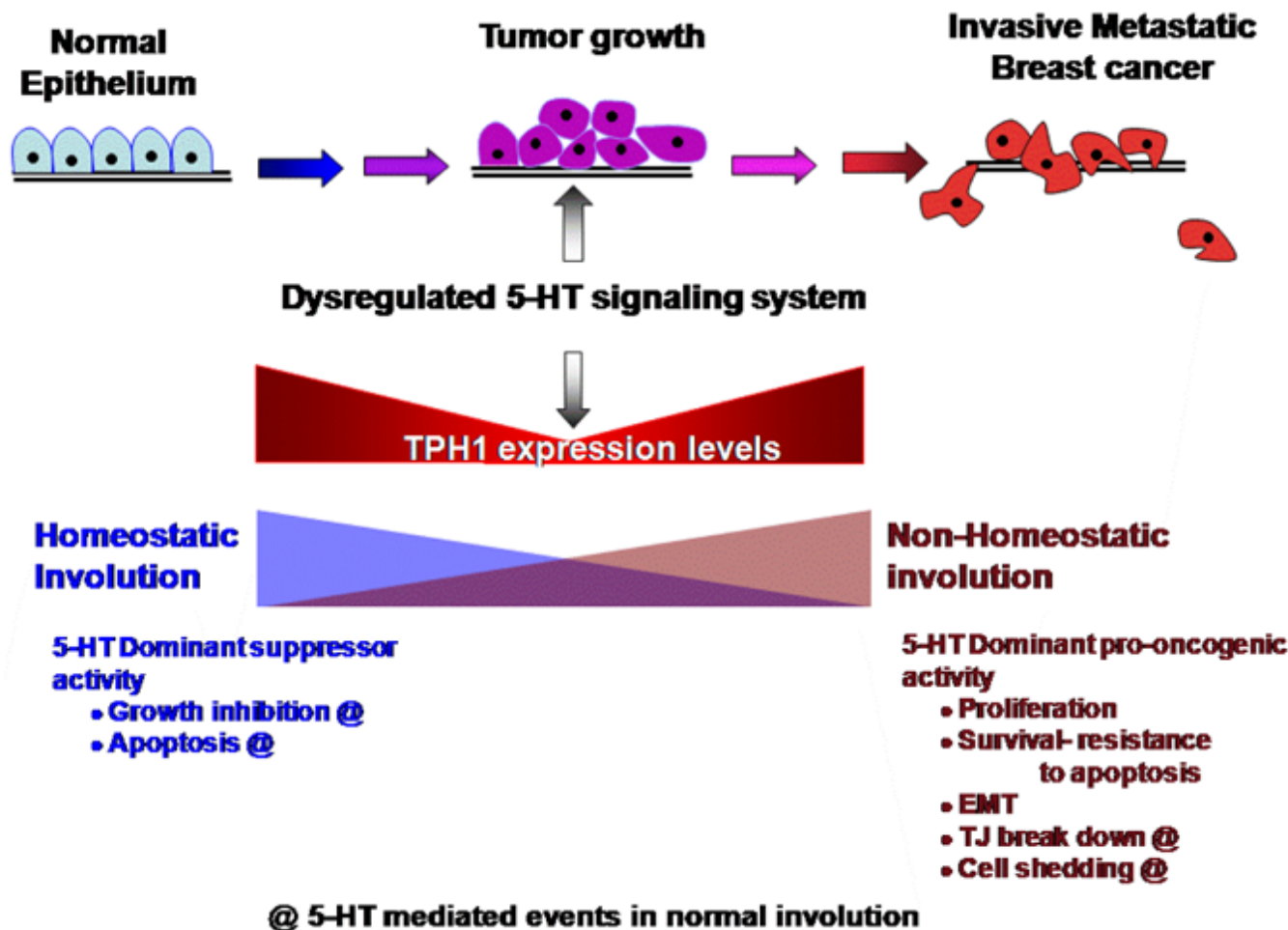
One intriguing finding was that 5-HT stimulated higher proliferation rates in MDA-MB-231 cells and promoted obvious morphological changes. Similar phenotypic changes have been correlated with induction of a highly invasive behavior in these cells [42,43].

Proliferative actions of 5-HT are not unprecedented and have been reported to be crucial for liver regeneration [55]. Considering that sustained exposure to 5-HT induces quiescence and apoptosis in untransformed mammary epithelial cells, the response of MDA-MB-231 cells represents a major change in the way these cells interpret the 5-HT signal. This proliferative effect of 5-HT occurs in spite of the continued expression of the 5-HT₇ receptor, but we have not yet been able to attribute the growth-stimulatory effect to a single 5-HT receptor. The failure of 5-HT to cause growth inhibition and cell death in MDA-MB-231 cells may be attributable to altered downstream

5-HT₇ signaling. Changes in cAMP dynamics similar to those we observed in MDA-MB-231 cells have been linked to a switch from growth inhibition to growth stimulation in other cells [56-61].

Although some of the normal physiological actions mediated by 5-HT₇ such as anti-proliferation and pro-apoptosis would inhibit tumor progression, it is not a simple matter that 5-HT₇ is uniformly tumor-suppressing. Other actions mediated by 5-HT₇ can enhance tumor progression. Among these is the disruption of cell-to-cell junctions [6,7], which provides an important physiological advantage during invasion and metastasis. Tight junctions have been shown to restrain tumorigenesis, and disrupting tight junctions and other static cell junctions is imperative for tumor growth and invasion [62,62-67].

Figure 7



Model of a working hypothesis for 5-HT influences on breast cancer progression. 5-HT is a tumor-suppressing signal in non-transformed breast cells and early stage breast cancers, so early tumor growth relies on reductions in TPH1 expression. During tumor progression, cells acquire genetic or epigenetic alterations in 5-HT signaling which then make them resistant to suppressive 5-HT actions and favor tumor-promoting actions (e.g., dynamic cell junctions and cell shedding), as well as acquisition of new receptors and functions (e.g., stimulated proliferation and epithelial-mesenchymal transition). The figure is inspired by the image in [69].

Although 5-HT signaling can expose cancer cells to a mixture of positive and negative consequences, cancer cells cannot simplify their environment by avoiding 5-HT signaling completely. Apart from the fact of endogenous epithelial 5-HT biosynthesis, cancer cells receive 5-HT signaling from at least three outside sources: neighboring normal breast tissue, normal blood circulation, and hemostatic plaques within tumors (platelet activation and 5-HT release - an essential part of stabilizing the tumor vasculature) [68]. Consequently, there are advantages for breast cancer cells to be gained from altering, rather than avoiding, 5-HT signaling. Presumably, these advantages explain why TPH1 expression does not simply continue to decline to zero in advanced cancers, and is commonly elevated in the most highly-transformed cancer cells. Analogous nonlinear associations with breast cancer progression have been reported in the TGF- β system, which is also generally cytostatic in normal cells but advantageous in advanced cancers [69,70].

While the epithelial cells of breast cancer may be important targets of 5-HT, it is also likely that stromal elements, including connective tissue, adipose, infiltrating blood cells, and vascular elements, are regulated by 5-HT synthesized in breast cancers. The discrepancy between the 5-HT receptor expression profiles of primary mammary epithelial cells (5-HT_{1D,2B,3} and γ) and in normal whole gland tissue (5-HT_{1B,1D,1F, 2A, 2B,3,5A} and γ , Oncomine database) suggests that a subset of 5-HT receptors (5-HT_{1F,2A,5A}) are expressed in non-epithelial elements (connective tissue, myoepithelium, blood cells, adipose tissue, vasculature). Some of these extra-epithelial tissues are well known targets of 5-HT (blood vessels and adipose), and others, such as the connective tissue stroma, have not yet been studied. A new study [71] has shown that 5-HT is an important physiological suppressor of osteoblast growth and bone mineralization. Therefore, bone, to which breast cancers preferentially metastasize, may use breast cell-derived 5-HT as an important extra-epithelial target tissue.

Our previous [5-7] and current results are summarized (Figure 7) as follows: a) physiological responses to 5-HT include some that are tumor-suppressing (growth inhibition and apoptosis) and others that are tumor-promoting (junctional breakdown, cell shedding) and because of the growth suppression actions, early tumor growth relies on reductions in TPH1 expression and 5-HT synthesis, and b) as the tumors progress, cells acquire alterations in the 5-HT signal, thus developing resistance to the tumor-suppressive aspects of 5-HT (growth inhibition and apoptosis), while retaining and favoring tumor-promoting actions. These effects are further enhanced by increasing TPH1 levels and acquisition of new tumor promoting-activities (cell proliferation, survival, epithelial-mesenchymal transition phenotype). Fully optimized 5-HT signaling in cancers results in tumors in which 5-HT is used to promote growth, invasiveness, angiogenesis and other patho-physiological effects. While this understanding may need many

refinements, it is further supported by the overall trend toward increased complexity of 5-HT receptor expression in association with aggressive tumors, which suggests beneficial influences of 5-HT on tumor progression.

Importantly, we believe the implications of understanding 5-HT physiology extend beyond breast cancers. This is based on reports indicating important roles of 5-HT in the cancers of skin, gut, brain, lung, prostate, liver, and pancreas [20-23,27,28]. Duct systems that are lined by epithelia and require homeostatic regulation represents a common denominator among these organ systems. In some of these organs, like breast and liver, 5-HT has been implicated in homeostatic regulation of secretory ducts [19,29,72].

Conclusions

Although cancers generally are clonal and may rely on self-renewing stem cells over the long term [3,45,73-76], any given tumor must become heterotypic if it is to reach a substantial size and pathophysiologic complexity. The cancer consists of a community of cells that contribute different pathophysiological properties. The heterotypic nature of a cancer is responsible for its ability to adapt to a changing microenvironment during progression through invasiveness and metastasis. Among the different cell types within a cancer, there are presumably differences in the components and functionality of the 5-HT system. Such differences include cells with a greater or lesser ability to synthesize 5-HT, and cells with different complements of receptors. While this heterotypic 5-HT physiology in breast tumors may create a great deal of complexity, it is possible that future studies will identify common features or weak links in the 5-HT system of breast cancers, which can be exploited therapeutically. The inherent druggability of 5-HT systems makes it reasonable to assume that treatments targeting these systems could achieve sufficiently positive therapeutic indices to justify their uses in cancer.

It would be premature to suggest that studies reported here are sufficient to establish the prognostic or therapeutic value of the breast cancer TPH1/5-HT system. However, an early prediction from our studies is that tumors in which TPH1 is significantly downregulated will have not yet gained resistance to 5-HT or reached metastatic stages. Therefore, TPH1 downregulation may indicate a better prognosis. Through further studies on the breast 5-HT system we expect to improve our understating of its role in breast cancer.

Competing interests

The authors declare that they have no competing interests.

Authors' contributions

VPP and NDH designed research, VPP performed research, AMM, LLH. and ARB provided analytical and technical support. NDH and VPP wrote the paper. All authors read and approved the manuscript.

Additional files

The following Additional files are available online:

Additional file 1

PDF document containing Table S1, primers used for detecting 5-HT receptors; Figure S1, which compares SERT protein levels between non-transformed and breast cancer cells; Figure S2 is TPH1 staining intensity key for scoring tissue microarray sections; Figure S3 represents changes in TPH1 signal in human breast tumors; Figure S4 represents differences in 5-HT receptor isoform gene expression between non-transformed (pHMECs and MCF10A) and breast cancer cells (MCF7, MDA-MB-231 and T47D); Figure S5 depicts 5-HT inhibition of cell growth in non-transformed mammary epithelial cells; and Figure S6 shows that the 5-HT effect on cell proliferation at 36 h is not influenced by cell death.

See <http://www.biomedcentral.com/content/supplementary/bcr2448-S1.PDF>

Acknowledgements

The work was supported by grants from the National Institutes of Health (DK52134) and Department of the Army (BC052576) (NDH) and Post-doctoral fellowship (T32-CA059268) to L.L.H. This project was supported by National Research Initiative Competitive Grant no: 2007-35206-17898 from the USDA Cooperative State Research, Education and Extension Service. The authors declare no conflict of interest. The authors would like to thank Elise Demitrack for help preparing the manuscript.

References

- Polyak K: **Breast cancer: origins and evolution.** *J Clin Invest* 2007, **117**:3155-3163.
- Polyak K, Haviv I, Campbell IG: **Co-evolution of tumor cells and their microenvironment.** *Trends Genet* 2009, **25**:30-38.
- Hanahan D, Weinberg RA: **The hallmarks of cancer.** *Cell* 2000, **100**:57-70.
- Paez-Ribes M, Allen E, Hudock J, Takeda T, Okuyama H, Vinals F, Inoue M, Bergers G, Hanahan D, Casanovas O: **Antiangiogenic therapy elicits malignant progression of tumors to increased local invasion and distant metastasis.** *Cancer Cell* 2009, **15**:220-231.
- Matsuda M, Imaoka T, Vomachka AJ, Gudelsky GA, Hou Z, Mistry M, Bailey JP, Nieport KM, Walther DJ, Bader M, Horseman ND: **Serotonin regulates mammary gland development via an autocrine-paracrine loop.** *Dev Cell* 2004, **6**:193-203.
- Stull MA, Pai V, Vomachka AJ, Marshall AM, Jacob GA, Horseman ND: **Mammary gland homeostasis employs serotonergic regulation of epithelial tight junctions.** *Proc Natl Acad Sci USA* 2007, **104**:16708-16713.
- Pai VP, Horseman ND: **Biphasic Regulation of Mammary Epithelial Resistance by Serotonin through Activation of Multiple Pathways.** *J Biol Chem* 2008, **283**:30901-30910.
- Hernandez LL, Stiening CM, Wheelock JB, Baumgard LH, Parkhurst AM, Collier RJ: **Evaluation of serotonin as a feedback inhibitor of lactation in the bovine.** *J Dairy Sci* 2008, **91**:1834-1844.
- Hadsell DL, Parlow AF, Torres D, George J, Olea W: **Enhancement of maternal lactation performance during prolonged lactation in the mouse by mouse GH and long-R3-IGF-I is linked to changes in mammary signaling and gene expression.** *J Endocrinol* 2008, **198**:61-70.
- Park M, Kang K, Park S, Back K: **Conversion of 5-hydroxytryptophan into serotonin by tryptophan decarboxylase in plants, Escherichia coli, and yeast.** *Biosci Biotechnol Biochem* 2008, **72**:2456-2458.
- Callera G, Tostes R, Savoia C, Muscara MN, Touyz RM: **Vasoactive peptides in cardiovascular (patho)physiology.** *Expert Rev Cardiovasc Ther* 2007, **5**:531-552.
- Mohammad-Zadeh LF, Moses L, Gwaltney-Brant SM: **Serotonin: a review.** *J Vet Pharmacol Ther* 2008, **31**:187-199.
- Crowell MD, Wessinger SB: **5-HT and the brain-gut axis: opportunities for pharmacologic intervention.** *Expert Opin Investig Drugs* 2007, **16**:761-765.
- Dale GL: **Coated-platelets: an emerging component of the pro-coagulant response.** *J Thromb Haemost* 2005, **3**:2185-2192.
- Cote F, Thevenot E, Fligny C, Fromes Y, Darmon M, Ripoché MA, Bayard E, Hanoun N, Saurini F, Lechat P, Dandolo L, Hamon M, Mallet J, Vodjdani G: **Disruption of the nonneuronal tph1 gene demonstrates the importance of peripheral serotonin in cardiac function.** *Proc Natl Acad Sci USA* 2003, **100**:13525-13530.
- Lesurtel M, Soll C, Graf R, Clavien PA: **Role of serotonin in the hepato-gastrointestinal tract: an old molecule for new perspectives.** *Cell Mol Life Sci* 2008, **65**:940-952.
- Russo J, Russo IH: **Toward a physiological approach to breast cancer prevention.** *Cancer Epidemiol Biomarkers Prev* 1994, **3**:353-364.
- Mallon E, Osin P, Nasiri N, Blain I, Howard B, Gusterson B: **The basic pathology of human breast cancer.** *J Mammary Gland Biol Neoplasia* 2000, **5**:139-163.
- Marzioni M, Glaser S, Francis H, Marucci L, Benedetti A, Alvaro D, Taffetani S, Ueno Y, Roskams T, Phinizy JL, Venter J, Fava G, Lesage GD, Alpini G: **Autocrine/paracrine regulation of the growth of the biliary tree by the neuroendocrine hormone serotonin.** *Gastroenterology* 2005, **128**:121-137.
- Alpini G, Invernizzi P, Gaudio E, Venter J, Kopriva S, Bernuzzi F, Onori P, Franchitto A, Coufal M, Frampton G, Alvaro D, Lee SP, Marzioni M, Benedetti A, DeMorrow S: **Serotonin metabolism is dysregulated in cholangiocarcinoma, which has implications for tumor growth.** *Cancer Res* 2008, **68**:9184-9193.
- Vicentini LM, Cattaneo MG, Fesce R: **Evidence for receptor sub-type cross-talk in the mitogenic action of serotonin on human small-cell lung carcinoma cells.** *Eur J Pharmacol* 1996, **318**:497-504.
- Siddiqui EJ, Shabbir M, Mikhailidis DP, Thompson CS, Mumtaz FH: **The role of serotonin (5-hydroxytryptamine1A and 1B) receptors in prostate cancer cell proliferation.** *J Urol* 2006, **176**:1648-1653.
- Sreevidya CS, Khaskhely NM, Fukunaga A, Khaskina P, Ullrich SE: **Inhibition of photocarcinogenesis by platelet-activating factor or serotonin receptor antagonists.** *Cancer Res* 2008, **68**:3978-3984.
- Suzuki A, Naruse S, Kitagawa M, Ishiguro H, Yoshikawa T, Ko SB, Yamamoto A, Hamada H, Hayakawa T: **5-Hydroxytryptamine Strongly Inhibits Fluid Secretion in Guinea Pig Pancreatic Duct Cells.** *J Clin Invest* 2001, **108**:749-756.
- Nathan JD, Liddle RA: **Neurohormonal control of pancreatic exocrine secretion.** *Curr Opin Gastroenterol* 2002, **18**:536-544.
- Russo F, Vittoria A: **Neuroendocrine cells in the vestibular glands of the genital tract of cows and pigs.** *Acta Histochem* 2006, **108**:351-355.
- Ogawa T, Sugidachi A, Tanaka N, Fujimoto K, Fukushige J, Tani Y, Asai F: **Effects of R-102444 and its active metabolite R-96544, selective 5-HT2A receptor antagonists, on experimental acute and chronic pancreatitis: Additional evidence for possible involvement of 5-HT2A receptors in the development of experimental pancreatitis.** *Eur J Pharmacol* 6544, **521**:156-163.
- Siddiqui EJ, Thompson CS, Mikhailidis DP, Mumtaz FH: **The role of serotonin in tumour growth (review).** *Oncol Rep* 2005, **14**:1593-1597.
- Van Lommel A: **Pulmonary neuroendocrine cells (PNEC) and neuroepithelial bodies (NEB): chemoreceptors and regulators of lung development.** *Paediatr Respir Rev* 2001, **2**:171-176.
- Ethier SP, Summerfelt RM, Cundiff KC, Asch BB: **The influence of growth factors on the proliferative potential of normal and**

- primary breast cancer-derived human breast epithelial cells. *Breast Cancer Res Treat* 1991, **17**:221-230.
31. **The National Cancer Institute-Cooperative Breast Cancer Tissue** [<http://cbctr.nci.nih.gov/>]
 32. Huang Y, Li X, Jiang J, Frank SJ: **Prolactin modulates phosphorylation, signaling and trafficking of epidermal growth factor receptor in human T47D breast cancer cells.** *Oncogene* 2006, **25**:7565-7576.
 33. Tonner E, Barber MC, Travers MT, Logan A, Flint DJ: **Hormonal control of insulin-like growth factor-binding protein-5 production in the involuting mammary gland of the rat.** *Endocrinology* 1997, **138**:5101-5107.
 34. McCarty KS Jr, Miller LS, Cox EB, Konrath J, McCarty KS Sr: **Estrogen receptor analyses. Correlation of biochemical and immunohistochemical methods using monoclonal antireceptor antibodies.** *Arch Pathol Lab Med* 1985, **109**:716-721.
 35. Abd El-Rehim DM, Ball G, Pinder SE, Rakha E, Paish C, Robertson JF, Macmillan D, Blamey RW, Ellis IO: **High-throughput protein expression analysis using tissue microarray technology of a large well-characterised series identifies biologically distinct classes of breast cancer confirming recent cDNA expression analyses.** *Int J Cancer* 2005, **116**:340-350.
 36. Rhodes DR, Kalyana-Sundaram S, Mahavisno V, Varambally R, Yu J, Briggs BB, Barrette TR, Anstet MJ, Kincead-Beal C, Kulkarni P, Varambally S, Ghosh D, Chinnaiyan AM: **Oncomine 3.0: genes, pathways, and networks in a collection of 18,000 cancer gene expression profiles.** *Neoplasia* 2007, **9**:166-180.
 37. **Oncomine database** [<http://www.oncomine.org>]
 38. Nilsson T, Longmore J, Shaw D, Pantev E, Bard JA, Branchek T, Edvinsson L: **Characterisation of 5-HT receptors in human coronary arteries by molecular and pharmacological techniques.** *Eur J Pharmacol* 1999, **372**:49-56.
 39. Kato S, Kumamoto H, Hirano M, Akiyama H, Kaneko N: **Expression of 5-HT2A and 5-HT1B receptor mRNA in blood vessels.** *Mol Cell Biochem* 1999, **199**:57-61.
 40. Motyl T, Gajkowska B, Zarzynska J, Gajewska M, Lamparska-Przybysz M: **Apoptosis and autophagy in mammary gland remodeling and breast cancer chemotherapy.** *J Physiol Pharmacol* 2006, **57**(Suppl 7):17-32.
 41. Stein T, Salomonis N, Gusterson BA: **Mammary gland involution as a multi-step process.** *J Mammary Gland Biol Neoplasia* 2007, **12**:25-35.
 42. Bemis LT, Schedin P: **Reproductive state of rat mammary gland stroma modulates human breast cancer cell migration and invasion.** *Cancer Res* 2000, **60**:3414-3418.
 43. McDaniel SM, Rumer KK, Biroc SL, Metz RP, Singh M, Porter W, Schedin P: **Remodeling of the mammary microenvironment after lactation promotes breast tumor cell metastasis.** *Am J Pathol* 2006, **168**:608-620.
 44. Schedin P, O'Brien J, Rudolph M, Stein T, Borges V: **Microenvironment of the involuting mammary gland mediates mammary cancer progression.** *J Mammary Gland Biol Neoplasia* 2007, **12**:71-82.
 45. Polyak K: **Breast cancer: origins and evolution.** *J Clin Invest* 2007, **117**:3155-3163.
 46. Howard BA, Gusterson BA: **Human breast development.** *J Mammary Gland Biol Neoplasia* 2000, **5**:119-137.
 47. Clarke RB, Howell A, Potten CS, Anderson E: **Dissociation between steroid receptor expression and cell proliferation in the human breast.** *Cancer Res* 1997, **57**:4987-4991.
 48. Jarzabek K, Koda M, Kozlowski L, Mittre H, Sulkowski S, Kottler ML, Wolczynski S: **Distinct mRNA, protein expression patterns and distribution of oestrogen receptors alpha and beta in human primary breast cancer: correlation with proliferation marker Ki-67 and clinicopathological factors.** *Eur J Cancer* 2005, **41**:2924-2934.
 49. Hewitt SC, Korach KS: **Progesterone action and responses in the alphaERKO mouse.** *Steroids* 2000, **65**:551-557.
 50. Lange CA: **Challenges to defining a role for progesterone in breast cancer.** *Steroids* 2008, **73**:914-921.
 51. Paez-Ribes M, Allen E, Hudock J, Takeda T, Okuyama H, Vinals F, Inoue M, Bergers G, Hanahan D, Casanovas O: **Antiangiogenic therapy elicits malignant progression of tumors to increased local invasion and distant metastasis.** *Cancer Cell* 2009, **15**:220-231.
 52. Westphal RS, Sanders-Bush E: **Differences in agonist-independent and -dependent 5-hydroxytryptamine2C receptor-mediated cell division.** *Mol Pharmacol* 1996, **49**:474-480.
 53. De Lucchini S, Ori M, Nardini M, Marracci S, Nardi I: **Expression of 5-HT2B and 5-HT2C receptor genes is associated with proliferative regions of Xenopus developing brain and eye.** *Brain Res Mol Brain Res* 2003, **115**:196-201.
 54. Sonier B, Arseneault M, Lavigne C, Ouellette RJ, Vaillancourt C: **The 5-HT2A serotonergic receptor is expressed in the MCF-7 human breast cancer cell line and reveals a mitogenic effect of serotonin.** *Biochem Biophys Res Commun* 2006, **343**:1053-1059.
 55. Lesurtel M, Graf R, Aleil B, Walther DJ, Tian Y, Jochum W, Gachet C, Bader M, Clavien PA: **Platelet-derived serotonin mediates liver regeneration.** *Science* 2006, **312**:104-107.
 56. Bombik BM, Burger MM: **c-AMP and the cell cycle: inhibition of growth stimulation.** *Exp Cell Res* 1973, **80**:88-94.
 57. Burger MM, Bombik BM, Breckenridge BM, Sheppard JR: **Growth control and cyclic alterations of cyclic AMP in the cell cycle.** *Nat New Biol* 1972, **239**:161-163.
 58. Sheppard JR: **Difference in the cyclic adenosine 3',5'-monophosphate levels in normal and transformed cells.** *Nat New Biol* 1972, **236**:14-16.
 59. Ryan WL, Heidrick ML: **Inhibition of cell growth in vitro by adenosine 3',5'-monophosphate.** *Science* 1968, **162**:1484-1485.
 60. Ryan WL, Heidrick ML: **Role of cyclic nucleotides in cancer.** *Adv Cyclic Nucleotide Res* 1974, **4**:81-116.
 61. Heidrick ML, Ryan WL: **Adenosine 3',5'-cyclic monophosphate and contact inhibition.** *Cancer Res* 1971, **31**:1313-1315.
 62. Birchmeier W: **E-cadherin as a tumor (invasion) suppressor gene.** *Bioessays* 1995, **17**:97-99.
 63. Itoh M, Bissell MJ: **The organization of tight junctions in epithelia: implications for mammary gland biology and breast tumorigenesis.** *J Mammary Gland Biol Neoplasia* 2003, **8**:449-462.
 64. Hoevel T, Macek R, Mundigl O, Swisshelm K, Kubbies M: **Expression and targeting of the tight junction protein CLDN1 in CLDN1-negative human breast tumor cells.** *J Cell Physiol* 2002, **191**:60-68.
 65. Swisshelm K, Machl A, Planitzer S, Robertson R, Kubbies M, Hosier S: **SEMP1, a senescence-associated cDNA isolated from human mammary epithelial cells, is a member of an epithelial membrane protein superfamily.** *Gene* 1999, **226**:285-295.
 66. Hoover KB, Liao SY, Bryant PJ: **Loss of the tight junction MAGUK ZO-1 in breast cancer: relationship to glandular differentiation and loss of heterozygosity.** *Am J Pathol* 1998, **153**:1767-1773.
 67. Chlenski A, Ketels KV, Korovaitseva GI, Talamonti MS, Oyasu R, Scarpelli DG: **Organization and expression of the human zo-2 gene (tip-2) in normal and neoplastic tissues.** *Biochim Biophys Acta* 2000, **1493**:319-324.
 68. Ho-Tin-Noe B, Goerge T, Cifuni SM, Duerschmied D, Wagner DD: **Platelet granule secretion continuously prevents intratumor hemorrhage.** *Cancer Res* 2008, **68**:6851-6858.
 69. Roberts AB, Wakefield LM: **The two faces of transforming growth factor beta in carcinogenesis.** *Proc Natl Acad Sci USA* 2003, **100**:8621-8623.
 70. Bakin AV, Rinehart C, Tomlinson AK, Arteaga CL: **p38 mitogen-activated protein kinase is required for TGFbeta-mediated fibroblastic transdifferentiation and cell migration.** *J Cell Sci* 2002, **115**:3193-3206.
 71. Yadav VK, Ryu JH, Suda N, Tanaka KF, Gingrich JA, Schutz G, Glorieux FH, Chiang CY, Zajac JD, Insogna KL, Mann JJ, Hen R, Ducy P, Karsenty G: **Lrp5 controls bone formation by inhibiting serotonin synthesis in the duodenum.** *Cell* 2008, **135**:825-837.
 72. Bayer H, Muller T, Myrtek D, Sorichter S, Ziegenhagen M, Norgauer J, Zissel G, Idzko M: **Serotonergic receptors on human airway epithelial cells.** *Am J Respir Cell Mol Biol* 2007, **36**:85-93.
 73. Polyak K: **Is breast tumor progression really linear?** *Clin Cancer Res* 2008, **14**:339-341.
 74. Nowell PC: **The clonal evolution of tumor cell populations.** *Science* 1976, **194**:23-28.
 75. Ginstier C, Wicha MS: **Mammary stem cell number as a determinant of breast cancer risk.** *Breast Cancer Res* 2007, **9**:109.

76. Chang CC: **Recent translational research: stem cells as the roots of breast cancer.** *Breast Cancer Res* 2006, **8**:103.
77. Richardson AL, Wang ZC, De Nicolo A, Lu X, Brown M, Miron A, Liao X, Iglehart JD, Livingston DM, Ganesan S: **X chromosomal abnormalities in basal-like human breast cancer.** *Cancer Cell* 2006, **9**:121-132.
78. **Expression Project for Oncology - Breast Samples** [<http://www.ncbi.nlm.nih.gov/geo/query/acc.cgi?acc=GSE2109>]
79. Yu K, Ganesan K, Miller LD, Tan P: **A modular analysis of breast cancer reveals a novel low-grade molecular signature in estrogen receptor-positive tumors.** *Clin Cancer Res* 2006, **12**:3288-3296.
80. Ivshina AV, George J, Senko O, Mow B, Putti TC, Smeds J, Lindahl T, Pawitan Y, Hall P, Nordgren H, Wong JE, Liu ET, Bergh J, Kuznetsov VA, Miller LD: **Genetic reclassification of histologic grade delineates new clinical subtypes of breast cancer.** *Cancer Res* 2006, **66**:10292-10301.
81. Miller WR, Larionov AA, Renshaw L, Anderson TJ, White S, Murray J, Murray E, Hampton G, Walker JR, Ho S, Krause A, Evans DB, Dixon JM: **Changes in breast cancer transcriptional profiles after treatment with the aromatase inhibitor, letrozole.** *Pharmacogenet Genomics* 2007, **17**:813-826.
82. Ginestier C, Cervera N, Finetti P, Esteyries S, Esterni B, Adelaide J, Xerri L, Viens P, Jacquemier J, Charafe-Jauffret E, Chaffanet M, Birnbaum D, Bertucci F: **Prognosis and gene expression profiling of 20q13-amplified breast cancers.** *Clin Cancer Res* 2006, **12**:4533-4544.
83. van 't Veer LJ, Dai H, Vijver MJ van de, He YD, Hart AA, Mao M, Peterse HL, Kooy K van der, Marton MJ, Witteveen AT, Schreiber GJ, Kerkhoven RM, Roberts C, Linsley PS, Bernards R, Friend SH: **Gene expression profiling predicts clinical outcome of breast cancer.** *Nature* 2002, **415**:530-536.
84. Chin SF, Teschendorff AE, Marioni JC, Wang Y, Barbosa-Morais NL, Thorne NP, Costa JL, Pinder SE, Wiel MA van de, Green AR, Ellis IO, Porter PL, Tavare S, Brenton JD, Ylstra B, Caldas C: **High-resolution aCGH and expression profiling identifies a novel genomic subtype of ER negative breast cancer.** *Genome Biol* 2007, **8**:R215.
85. Minn AJ, Gupta GP, Siegel PM, Bos PD, Shu W, Giri DD, Viale A, Olshen AB, Gerald WL, Massague J: **Genes that mediate breast cancer metastasis to lung.** *Nature* 2005, **436**:518-524.
86. Hess KR, Anderson K, Symmans WF, Valero V, Ibrahim N, Meija JA, Booser D, Theriault RL, Buzdar AU, Dempsey PJ, Rouzier R, Sneige N, Ross JS, Vidaurre T, Gomez HL, Hortobagyi GN, Puztai L: **Pharmacogenomic predictor of sensitivity to preoperative chemotherapy with paclitaxel and fluorouracil, doxorubicin, and cyclophosphamide in breast cancer.** *J Clin Oncol* 2006, **24**:4236-4244.
87. Sotiriou C, Wirapati P, Loi S, Harris A, Fox S, Smeds J, Nordgren H, Farmer P, Praz V, Haibe-Kains B, Desmedt C, Larsimont D, Cardoso F, Peterse H, Nuyten D, Buyse M, Vijver MJ Van de, Bergh J, Piccart M, Delorenzi M: **Gene expression profiling in breast cancer: understanding the molecular basis of histologic grade to improve prognosis.** *J Natl Cancer Inst* 2006, **98**:262-272.
88. Wang Y, Klijn JG, Zhang Y, Sieuwerts AM, Look MP, Yang F, Talantov D, Timmermans M, Meijer-van Gelder ME, Yu J, Jatke T, Berns EM, Atkins D, Foekens JA: **Gene-expression profiles to predict distant metastasis of lymph-node-negative primary breast cancer.** *Lancet* 2005, **365**:671-679.
89. Desmedt C, Piette F, Loi S, Wang Y, Lallemand F, Haibe-Kains B, Viale G, Delorenzi M, Zhang Y, d'Assignies MS, Bergh J, Lidereau R, Ellis P, Harris AL, Klijn JG, Foekens JA, Cardoso F, Piccart MJ, Buyse M, Sotiriou C, TRANSBIG Consortium: **Strong time dependence of the 76-gene prognostic signature for node-negative breast cancer patients in the TRANSBIG multicenter independent validation series.** *Clin Cancer Res* 2007, **13**:3207-3214.
90. Farmer P, Bonnefoi H, Becette V, Tubiana-Hulin M, Fumoleau P, Larsimont D, Macgrogan G, Bergh J, Cameron D, Goldstein D, Duss S, Nicolouaz AL, Brisken C, Fiche M, Delorenzi M, Iggo R: **Identification of molecular apocrine breast tumours by microarray analysis.** *Oncogene* 2005, **24**:4660-4671.
91. Vijver MJ van de, He YD, van't Veer LJ, Dai H, Hart AA, Voskuil DW, Schreiber GJ, Peterse JL, Roberts C, Marton MJ, Parrish M, Atsma D, Witteveen A, Glas A, Delahaye L, Velde T van der, Bartelink H, Rodenhuis S, Rutgers ET, Friend SH, Bernards R: **A gene expression signature as a predictor of survival in breast cancer.** *N Engl J Med* 2002, **347**:1999-2009.
92. Bild AH, Yao G, Chang JT, Wang Q, Potti A, Chasse D, Joshi MB, Harpole D, Lancaster JM, Berchuck A, Olson JA Jr, Marks JR, Dressman HK, West M, Nevins JR: **Oncogenic pathway signatures in human cancers as a guide to targeted therapies.** *Nature* 2006, **439**:353-357.