

Long intergenic non-coding RNA *APOC1P1-3* inhibits apoptosis by decreasing α -tubulin acetylation in breast cancer

X-H Liao^{1,6}, J-G Wang^{2,6}, L-Y Li¹, D-M Zhou², K-H Ren², Y-T Jin³, L Lv¹, J-G Yu¹, J-Y Yang¹, Q Lu¹, Q Zou³, J Yu⁴, X-P Liu^{*,2,5} and P Zhou^{*,1}

Increasing evidence indicates that long non-coding RNAs (lncRNAs) act as important regulatory factors in tumor progression. However, their roles in breast cancer remain largely unknown. In present studies, we identified aberrantly expressed long intergenic non-coding RNA *APOC1P1-3* (*lincRNA-APOC1P1-3*) in breast cancer by microarray, verified it by quantitative real-time PCR, and assessed methylation status in the promoter region by pyrosequencing. We also investigated the biological functions with plasmid transfection and siRNA silencing experiments, and further explored their mechanisms by RNA pull-down and RNA immunoprecipitation to identify binding proteins. We found that 224 lncRNAs were upregulated in breast cancer, whereas 324 were downregulated. The *lincRNA-APOC1P1-3* was overexpressed in breast cancer, which was related to tumor size and hypomethylation in its promoter region. We also found that *APOC1P1-3* could directly bind to tubulin to decrease α -tubulin acetylation, to inactivate caspase-3, and to inhibit apoptosis. This study demonstrates that overexpression of *APOC1P1-3* can inhibit breast cancer apoptosis.

Cell Death and Disease (2016) 7, e2236; doi:10.1038/cddis.2016.142; published online 26 May 2016

Long non-coding RNAs (lncRNAs) are a group of non-protein-coding transcripts longer than 200 nucleotides. They are found in sense or antisense orientation to protein-coding genes, within introns of protein-coding genes or in intergenic regions of the genome. Although significant numbers of lncRNAs have been identified, most of them remain largely uncharacterized and little is known about their functions.¹ There are reports that they not only interact directly with DNA, mRNAs or proteins (such as transcription factors), but also with other regulatory non-coding RNAs.² By binding to regulatory components and forming lncRNA–gene complexes, they cause genetic regulations or epigenetic modifications.³

Recently, lncRNAs draw attention on their potential contribution towards disease etiology. Accumulating findings implicate that lncRNAs are expressed aberrantly in the cancer development process, including proliferation, metastasis, and apoptosis. For example, *lncRNA-GAS5* expression is significantly downregulated in breast cancer cells, promoting apoptosis.⁴ The long intergenic non-coding RNA (lincRNA) *p21*, which contains p53-binding sites for activation during DNA damage, is regarded as an important repressor in the p53-mediated pathway and apoptosis.⁵ The lncRNAs involved in breast carcinogenesis are still in need of further exploring.

Apolipoprotein C-I pseudogene 1 (*APOC1P1*) is a pseudogene located in 19q13.2 between apolipoprotein C-I and apolipoprotein C-IV. It encodes three RNA transcript variants that belong to lincRNA family. The variant 3 (*lincRNA-APOC1P1-3*), which is shorter than the variant 1 and 2, lacks an alternate internal segment and uses an alternate internal splice site. Its expression and function in human diseases are unknown. In present studies, we tested the hypothesis that *APOC1P1-3* overexpression involved in breast cancer progression. Using the microarray, we confirmed that *lincRNA-APOC1P1-3* is highly expressed in breast cancer tissues. Microarray results were validated with quantitative real-time PCR in breast cancer cell lines and tissues. Biological functions of *lincRNA-APOC1P1-3* were assessed by gain *versus* loss function studies and regulatory mechanisms were investigated by RNA pull-down, RNA immunoprecipitation (RIP), and pyrosequencing. Our data support this hypothesis.

Results

***lincRNA-APOC1P1-3* is overexpressed in breast cancers.** Our microarray results (NCBI GEO accession: GSE80266) showed that 224 lncRNAs increased and 324

¹Department of Physiology and Pathophysiology, School of Basic Medical Sciences, Fudan University, No. 138 Yixueyuan Road, Shanghai, China.; ²Department of Pathology, School of Basic Medical Sciences, Fudan University, No. 138 Yixueyuan Road, Shanghai, China.; ³Department of Breast Surgery, Huashan Hospital, Fudan University, No. 12 Urumqi Middle Road, Shanghai, China.; ⁴Department of Medicine, University of Louisville, Louisville, KY 40292, USA and ⁵Department of Pathology, The Fifth People's Hospital of Shanghai, Fudan University, No. 128 Ruli Road, Shanghai, China

*Corresponding author: P Zhou, Department of Physiology and Pathophysiology, School of Basic Medical Sciences, Fudan University, No. 138 Yixueyuan Road, Shanghai 200032, China. Tel/Fax: +86 21 54237392; E-mail: zping@shmu.edu.cn or X-P Liu, Department of Pathology, School of Basic Medical Sciences, Fudan University, No. 138 Yixueyuan Road, Shanghai 200032, China. Tel/Fax: +86 21 54237528; E-mail: xpliu1228@fudan.edu.cn

⁶The two authors contributed equally to this work and are co-first authors.

Abbreviations: lncRNA, long non-coding RNA; lincRNA, long intergenic non-coding RNA; *APOC1P1*, Apolipoprotein C-I pseudogene 1; *APOC1*, Apolipoprotein C-1; RIP, RNA immunoprecipitation; ER, estrogen receptor; PgR, progesterone receptor; EGFR, epithelial growth factor receptor

Received 03.12.15; revised 16.4.16; accepted 27.4.16; Edited by G Calin

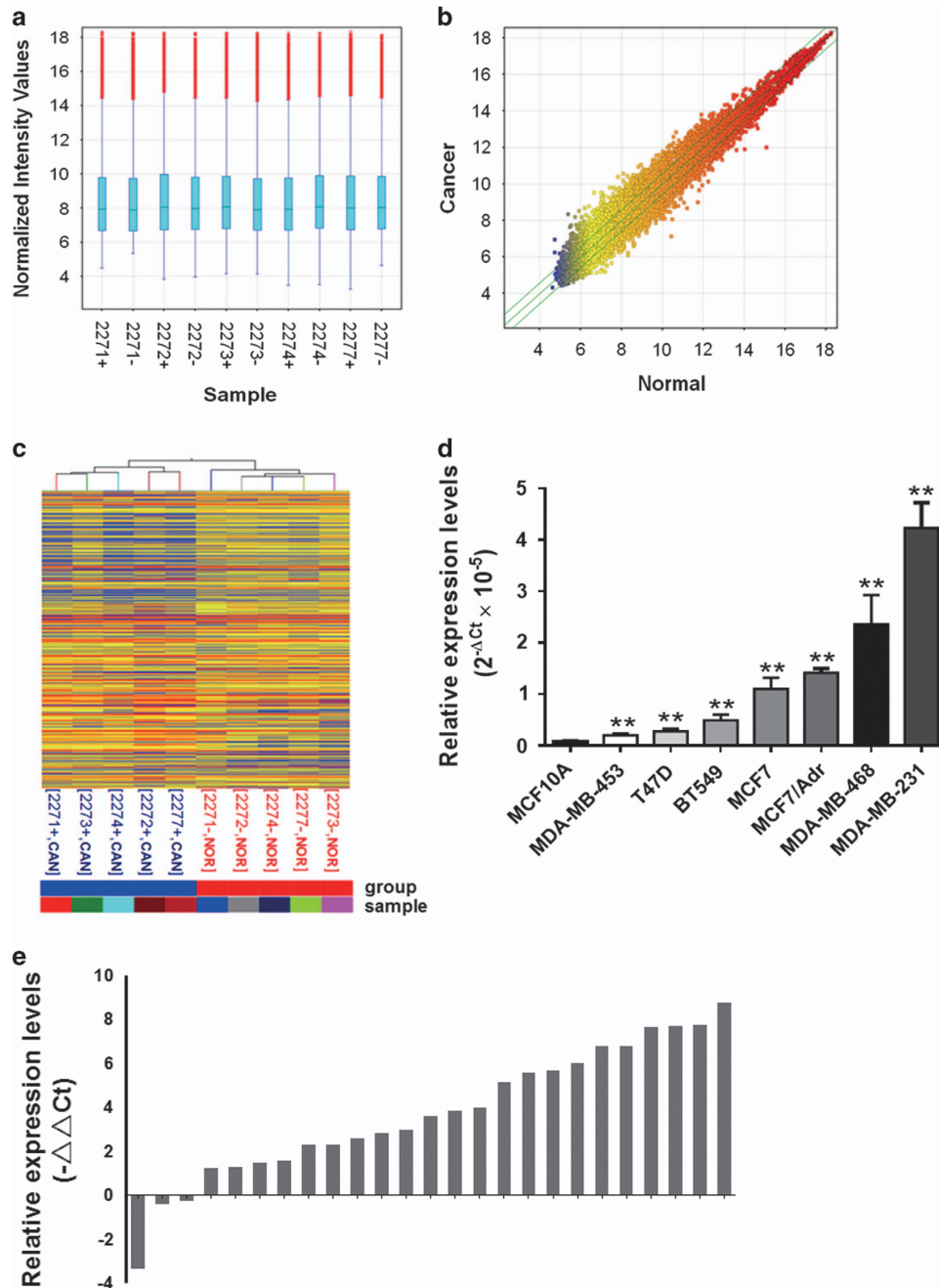


Figure 1 LincRNA microarray screening and qPCR validation for differentially expressed lincRNAs in breast cancer. The microarray results in five pairs of fresh breast cancer tissues and corresponding para-cancer normal tissues were shown in (a, b, and c). (a) Quality assessment of lincRNA data after filtering using box plot. The box plot is a convenient way to quickly visualize the distributions of a data set. It is commonly used for comparing the distributions of the intensities from all samples. After normalization, the distributions of log₂ ratios among all tested samples are nearly the same. Red bars indicate abnormal values. Blue boxes, the bottom and top of the box are the first and third quartiles, and the band inside the box is the median. (b) The scatter plot for assessing the lincRNA expression variation between cancer and para-cancer tissues. The values of X and Y axes in the scatter plot are the normalized signal values of the samples (log₂ scaled) or the averaged normalized signal values of groups of samples (log₂ scaled). The green lines are fold change lines (the default fold change value given is 1.5). The lincRNAs above the top green line and below the bottom green line indicated > 1.5-fold change of lincRNAs between the two compared samples or the two compared groups of samples. (c) Hierarchical clustering for 'differentially expressed lincRNAs for cancer versus para-cancer'. 'Red' indicates high relative expression, and 'blue' indicates low relative expression. The result from hierarchical clustering shows a distinguishable lincRNA expression profiling among samples. (d) qPCR detection showed all breast cancer cell lines bear higher expression level of *APOC1P1-3* than non-tumoral mammary epithelial cell line MCF10A. Data are shown as the mean ± S.D. Error bars indicate S.D. ***P* < 0.01 versus control (MCF10A). (e) qPCR detection in 25 pairs of fresh tissues showed *APOC1P1-3* was highly expressed in breast cancer tissues. $\Delta\Delta Ct = \Delta Ct$ (cancer) - ΔCt (normal), $\Delta Ct = Ct$ (*APOC1P1-3*) - Ct (*GAPDH*)

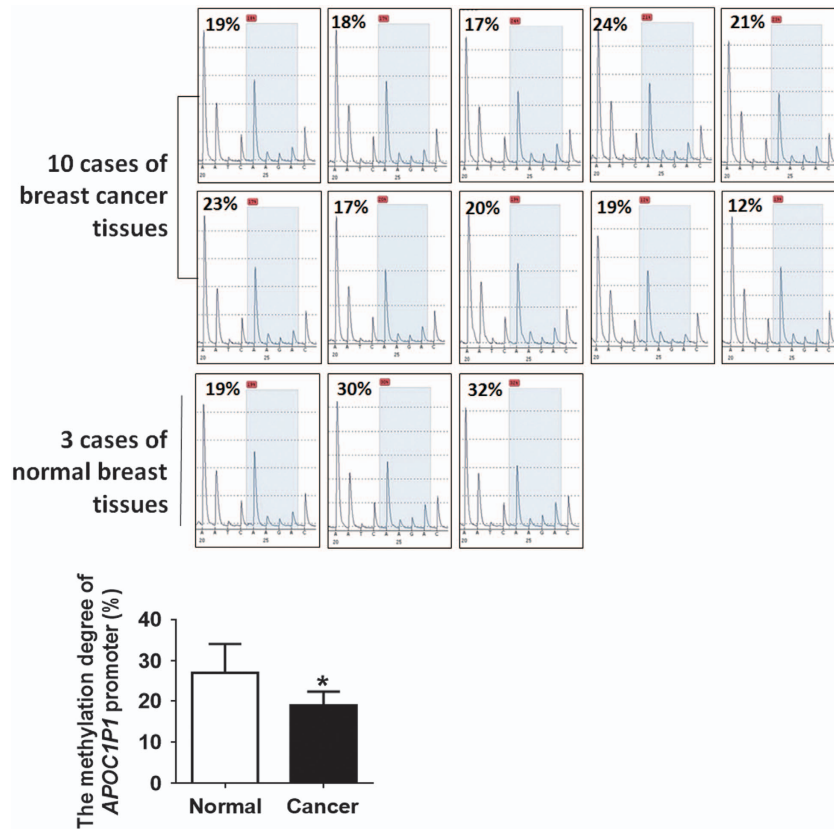


Figure 2 The methylation degree of *APOC1P1-3* promoter region. The methylation degree of breast cancer is lower than the normal mammary tissues (* $P < 0.05$). Images are the representation of statistically different site. Data are shown as the mean \pm S.D. Error bars indicate S.D.

decreased in breast cancer tissues (fold change ≥ 1.5 , Supplementary Table S4). Hierarchical clustering showed systematic variations in expression of lncRNAs in normal versus cancer tissues (Figures 1a–c). We found that *lincRNA-APOC1P1-3* (fold change = 2.02, P -value = 0.02, and full length = 631 bp) met the selection criteria and then was taken into further validation. To investigate the role of *APOC1P1-3*, we compared its expression profiles in cultured cells (MCF10A versus BT549, MCF7, MDA-MB-231, MDA-MB-453, MDA-MB-468, MCF7/Adr, and T47D) and 25 pairs fresh tissues (cancer versus matched normal tissues) with qPCR. Again, our data showed *lincRNA-APOC1P1-3* was overexpressed in both breast cancer cell lines and tissues (Figures 1d and e).

Hypomethylation in *APOC1P1* promoter region. Methylation of gene promoter has been proved to be eventful in gene epigenetic regulation. To determine whether methylation modifications exist in *APOC1P1* gene promoter region, we quantified C/G methylation levels in the first exon of *APOC1P1* with its upstream 1000-bp region using pyrosequencing in 3 normal and 10 breast tissues to quantify the degree of methylation at each CG site. All 16 C/G sites of the designated region were subjected to pyrosequencing. The pyrosequencing results showed that one of the 16 C/G methylation sites was significantly hypomethylated in breast cancer tissues when compared with normal tissues

(Figure 2), whereas the other fifteen sites showed no differences. These results indicate that the hypomethylation of the C/G site may contribute to the upregulation of *APOC1P1* in breast cancer.

LincRNA-APOC1P1-3 is related to the tumor size. To characterize the role of *APOC1P1-3* overexpression in breast cancers, we examined the relationship between expression of *APOC1P1-3* and clinicopathologic parameters (age, molecular subtypes (luminal A like, luminal B like, HER2 positive, and triple negative),⁷ breast cancer biomarkers (estrogen receptor (ER), progesterone receptor (PgR), and HER2), lymph node status, distant metastasis, and pTNM stage). We found that *APOC1P1-3* expression was positively associated with tumor size ($P = 0.0142$). Tumors with a larger volume (≥ 2.5 cm) tended to exhibit higher *APOC1P1-3* expression. However, there was no significant relationship between *APOC1P1-3* expression and other parameters (Table 1).

LincRNA-APOC1P1-3 regulates early apoptosis in breast cancer cells. To determine the biological function of *lincRNA-APOC1P1-3*, we performed gain/loss function studies. We found that MCF7 and MDA-MB-231 cells can be effectively upregulated and downregulated by *pcDNA3.1* and *siRNA* transfection, respectively (Figure 3a). The CCK8 proliferation assay showed that viable cells in *siRNA/Control*

Table 1 Relationship between *APOC1P1-3* expressions in cancer tissues and clinicopathologic parameters (n=90)

	n	<i>APOC1P1-3</i> expression ^a		P-value
		High	Low	
<i>Menopause</i>				0.8324
No	41	21	20	
Yes	49	24	25	
<i>Tumor size (cm)</i>				0.0142 ^b
≥ 2.5	22	16	6	
< 2.5	68	29	39	
<i>Distant metastasis</i>				0.5023
Yes	10	6	4	
No	80	39	41	
<i>Lymph node metastasis</i>				0.2049
Yes	42	24	18	
No	48	21	27	
<i>Nottingham grade</i>				0.5923
Grade I	24	12	12	
Grade II	42	23	19	
Grade III	24	10	14	
<i>St Gallen subtype</i>				0.5257
Luminal A	29	17	12	
Luminal B	29	12	17	
HER2 positive	18	8	10	
Basal like	14	8	6	
<i>ER</i>				0.8269
≥ 1%	57	28	29	
< 1%	33	17	16	
<i>PgR</i>				0.8324
≥ 1%	49	24	25	
< 1%	41	21	20	
<i>HER2^c</i>				0.5165
Overexpression	35	19	16	
Negative	55	26	29	
<i>ki67</i>				0.3404
≥ 20%	66	35	31	
< 20%	24	10	14	

^aThe cutoff value is the median expression level of *APOC1P1-3* (the value ≥ 0.1856 is considered high expression)

^bThe *APOC1P1-3* expression is related to the tumor size

^cHER2 status was validated by fluorescence *in situ* hybridization

group and *pcDNA3.1/APOC1P1-3* (*APOC1P1-3* overexpression) group were more than those in *siRNA/APOC1P1-3* (*APOC1P1-3* knockdown) group and *pcDNA3.1/Control* group, respectively (Figure 3b). Further, flow cytometry (for early apoptosis) demonstrated that the upregulation of *APOC1P1-3* inhibited, whereas downregulation induced cell apoptosis (Figure 3c). However, cell cycles were not affected (Figure 3d). Furthermore, we found that alterations of *APOC1P1-3* affected caspase-3 activation, whereas did not affect ER, PgR, HER2, and epithelial growth factor receptor (EGFR) expressions (Figure 4).

LincRNA-APOC1P1-3 can bind α -tubulin and modify its acetylation. To investigate the mechanism of *APOC1P1-3*-

induced early apoptosis, we determined whether *APOC1P1-3* could bind and interact with apoptosis-related proteins. Therefore, we first conducted RNA pull-down assay in MCF7 cells to determine binding proteins (Figure 5a). The mass spectrometry analysis for the specific band revealed that tubulin was a potential binding protein (Supplementary Table S5). To validate the mass spectrometry result, we performed a western blot using the captured protein from RNA pull-down assays in MDA-MB-231 and MCF7 cells (including α -tubulin and β -tubulin; Figure 5b). Furthermore, we performed a RIP assay with antibodies for α -tubulin and β -tubulin, and detected a significant enrichment of *APOC1P1-3* by further qPCR study (Figure 5c).

Suppressed tubulin polymerization and increased α -tubulin acetylation contribute to apoptosis of cancer cells.^{8,9} To further confirm effects of *APOC1P1-3* on acetylation levels of α -tubulin and attenuation of apoptosis, we examined acetylated α -tubulin levels in MCF7 and found that exogenous expression of *APOC1P1-3* significantly reduced acetylated α -tubulin (Figure 5d), although the total protein content of α/β -tubulin were unchanged. Furthermore, acetyltransferase inhibition with Trichostatin A demonstrated that the increasing acetylation of α -tubulin induced cell apoptosis (Figure 5e).

Discussion

Identification of lncRNA is one of the most significant discoveries in contemporary science. LncRNAs have an essential role in epigenetics,¹⁰ transcriptional regulation, growth and development,¹¹ and constitute part of the nucleus.¹² LncRNAs also function in tumor cell proliferation, apoptosis, invasion, and metastasis.¹³ In current studies, we found *lincRNA-APOC1P1-3* was overexpressed in breast cancer and the promoter region was hypomethylated. *APOC1P1-3* could bind to α -tubulin and affect its acetylation, leading to cell apoptosis inhibition. On the basis of these findings, we propose a regulatory mechanism for *APOC1P1-3* in breast cancer (Figure 6).

Methylation of gene promoter is important in gene epigenetic regulation. Hypomethylation of lncRNA has been found in cancers.^{14,15} Some breast cancer related genes, such as *BRCA1*,¹⁶ are known to be regulated by methylation modification. Recently, the methylation of lncRNA was also reported.¹⁷ As expression of *APOC1P1-3* is high in breast cancer, using pyrosequencing to detect the CpG methylation levels, we examined whether the promoter region was hypomethylated. Cross talk occurs between lncRNAs and methylation regulatory network. Presence of CpG island demethylation in the lncRNA promoter leads to overexpression of lncRNA transcription.¹⁸ Our study suggests that the hypomethylation of lncRNA promoter regulates expression of lncRNA. We have predicted binding proteins of the hypomethylation region using AliBaba 2.1, which suggests transcription factor Sp1 is a potential binding protein (Figure 7). In view of the important regulatory role of Sp1 in gene expression, we consider overexpression of *APOC1P1-3* may be due to the promoter hypomethylation followed by Sp1 activation. Further investigation on involvements of histone demethylases and Sp1 is needed.

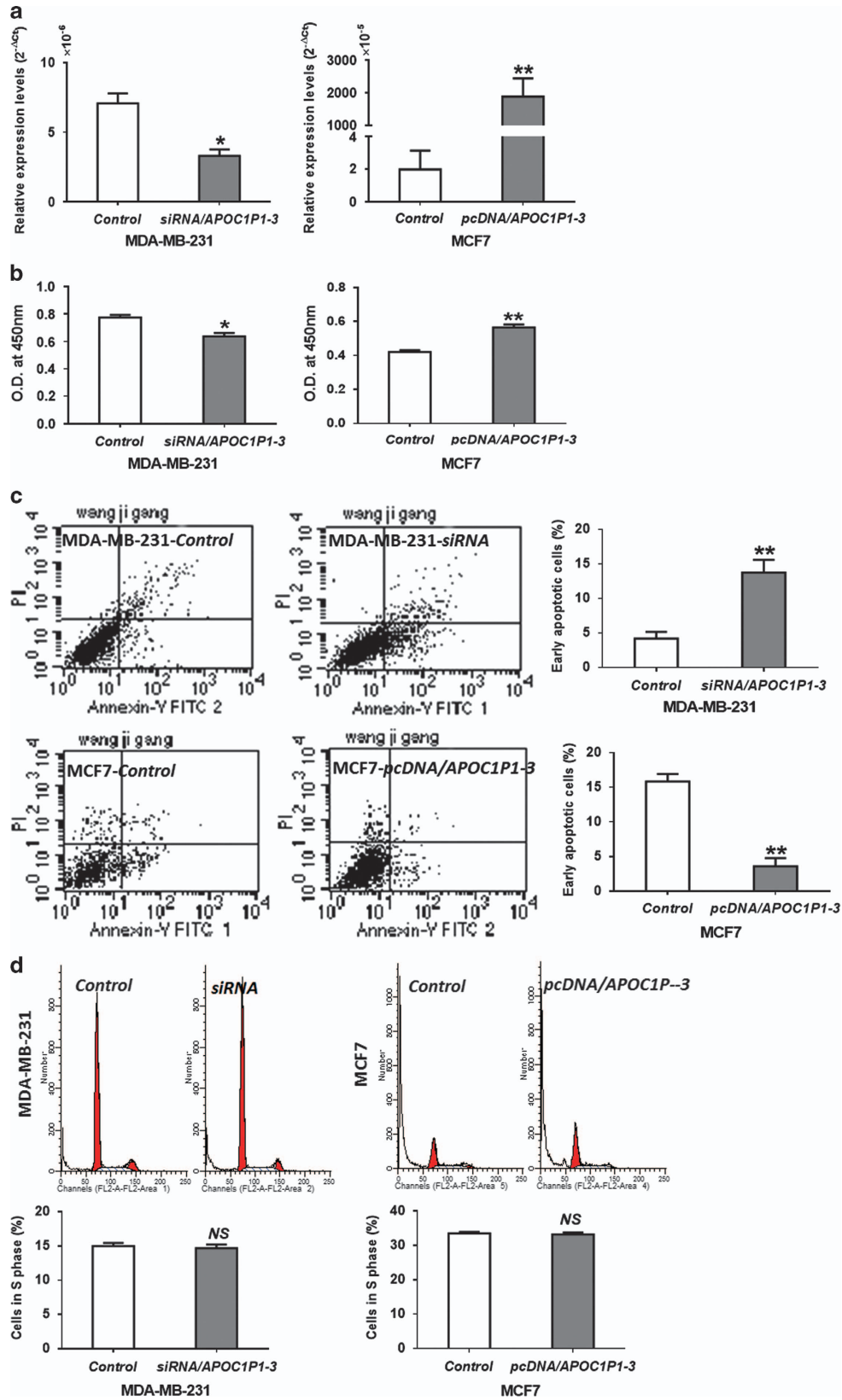


Figure 3 APOC1P1-3 can affect apoptosis of breast cancer cells. (a) qPCR to detect transfection efficiency. (b–d) After transfection for 24 h, CCK8 assay and flow cytometry were carried out to detect cell proliferation (b), early apoptosis (c), and cell cycle (d). MCF7 cells were cultured in serum-free medium. Data are shown as the mean \pm S.D. based on at least three independent experiments. Error bars indicate S.D. * $P < 0.05$ versus control; ** $P < 0.01$ versus control; NS, no significant versus control

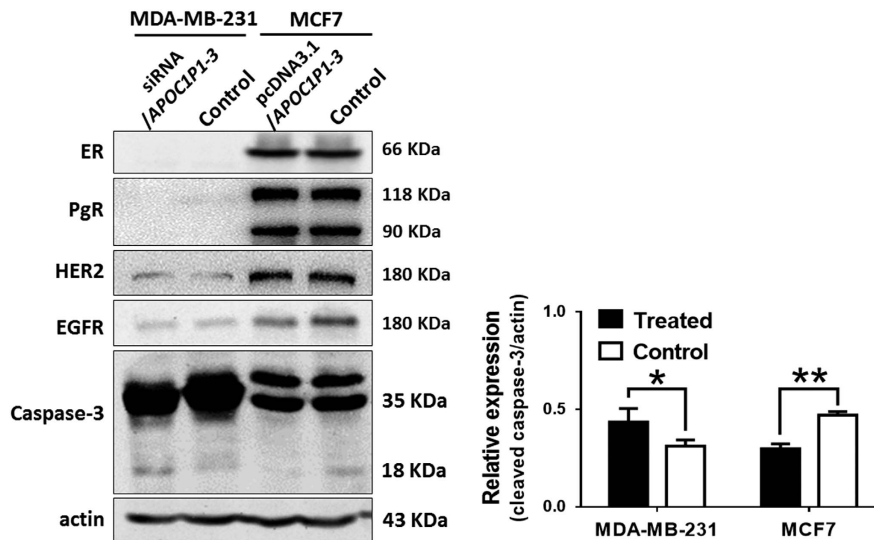


Figure 4 *APOC1P1-3* can affect caspase-3 activation, but can not affect expressions of ER, PgR, HER2, and EGFR. MDA-MB-231 cells were transfected with *siRNA/APOC1P1-3*, and MCF7 cells were transfected with *pcDNA3.1/APOC1P1-3*. MDA-MB-231 cells were negative for ER and PgR, and weakly positive for HER2 and EGFR. MCF7 cells were positive for ER, PgR, HER2, and EGFR. The downregulation of *APOC1P1-3* by siRNA can induce activation of caspase-3, and the upregulation of *APOC1P1-3* by pcDNA can inhibit that. However, the alteration of *APOC1P1-3* expression cannot affect ER, PgR, HER2, and EGFR. SiRNA, *APOC1P1-3* knockdown by siRNA transfection; pcDNA, *APOC1P1-3* overexpression by transfection with pcDNA3.1 plasmid encoding *APOC1P1-3*. * $P < 0.05$ versus control; ** $P < 0.01$ versus control

LncRNAs affect tumor proliferation via cell cycle and apoptosis.¹³ Caspase-3 is the main executor of apoptosis. Expression levels of cleaved caspase-3 reflect caspase-3 activities and degrees of apoptosis. Thus, we assessed early apoptosis and caspase-3 activation (CCK8 assay, flow cytometry, and western blot analysis) during *APOC1P1-3* silencing and overexpression. We found that *APOC1P1-3* repressed apoptosis of breast cancer to facilitate its proliferation through altering the apoptotic protein levels. These results support that *APOC1P1-3* regulates the breast cancer development by regulating apoptosis.

In spite of the complexity and diversity of mechanisms, most studies report that lncRNAs exert effects by directly binding to chromatin modification complexes (*HOTAIR*, *Xist*, and *Tsil*)^{19–21} or non-chromatin modification proteins (Dreh).²² We used an RNA pull-down assay to identify binding proteins. Mass spectrometry, western blots, and RIP identified tubulin as a specific binding protein. Tubulin is the major constituent of microtubules and cytoskeletal structure, and has critical role in cell mitosis and chromosome segregation, as well as cell proliferation and migration.²³ Post-translational modifications of α - and β -tubulin are key in regulation.^{24–26} α -Tubulin acetylation (transfer of the acetyl group from acetyl-coenzyme A to Lys-40) regulates the structure and function of microtubules.²⁷ Inhibition of tubulin polymerization and increased acetylation of α -tubulin contribute to cancer cell apoptosis.^{8,9} We found that *APOC1P1-3* bound to tubulin, and *APOC1P1-3* overexpression decreased α -tubulin acetylation, supporting that tubulin may be a target of *APOC1P1-3*. However, the effects of *APOC1P1-3* on acetylation of α -tubulin remains unknown.

Apolipoprotein C-1 (APOC1) protein is highly expressed in pancreatic cancer. It stimulates cell proliferation and prevents cell apoptosis.²⁸ However, APOC1 protein was found to be

downregulated in breast cancer patients.²⁹ *APOC1P1* is the pseudogene of *APOC1*. Generally, the antisense transcripts produced from pseudogenes can hybridize to corresponding mRNAs, forming dsRNAs cleaved by Dicer to endogenous siRNAs.³⁰ Our findings provide an explanation for low expression levels of APOC1 in breast cancer patients. Further study is clearly needed to investigate the interaction between the two genes.

In summary, our study demonstrates that *lincRNA-APOC1P1-3* is overexpressed in breast cancer, and its upregulation promotes cell proliferation by suppressing cell apoptosis. *APOC1P1-3* can bind to tubulin, and then increase α -tubulin acetylation and inhibit apoptosis. In addition, the promoter region of *APOC1P1* is hypomethylated, which contributes to the transcription activation and *APOC1P1-3* overexpression. We conclude that *lincRNA-APOC1P1-3* is involved in the breast cancer development.

Materials and Methods

The information for tumor tissues, cell lines, PCR, western blot, immunohistochemistry, proliferation assay, and cell cycle assay were provided in the Supplementary Materials.

LncRNA expression microarray analysis. Five matched breast cancer and normal tissues were used for microarray (Table S1). Total RNA was extracted using TRIzol (Ambion, Carlsbad, CA, USA), and transcribed into fluorescent cDNA using Quick Amp Labeling kit (Agilent, Palo Alto, CA, USA). After hybridization, using Human LncRNA Microarray v2.0 (Arraystar, Rockville, MD, USA), slides were scanned with the Agilent DNA Microarray Scanner (Agilent p/n G2565BA) and analyzed with Agilent Feature Extraction software v. 11.5.1.1. Quantile normalization and subsequent data processing were performed using the Agilent GeneSpring GX v11.5.1. Differentially expressed lncRNAs with statistical significance were identified through volcano plot filtering (threshold: P -value ≤ 0.05 , fold change ≥ 1.5 , and false discovery rate ≤ 0.05). Microarray array data analysis was completed by Shanghai KangChen bio-tech (Shanghai, China). The

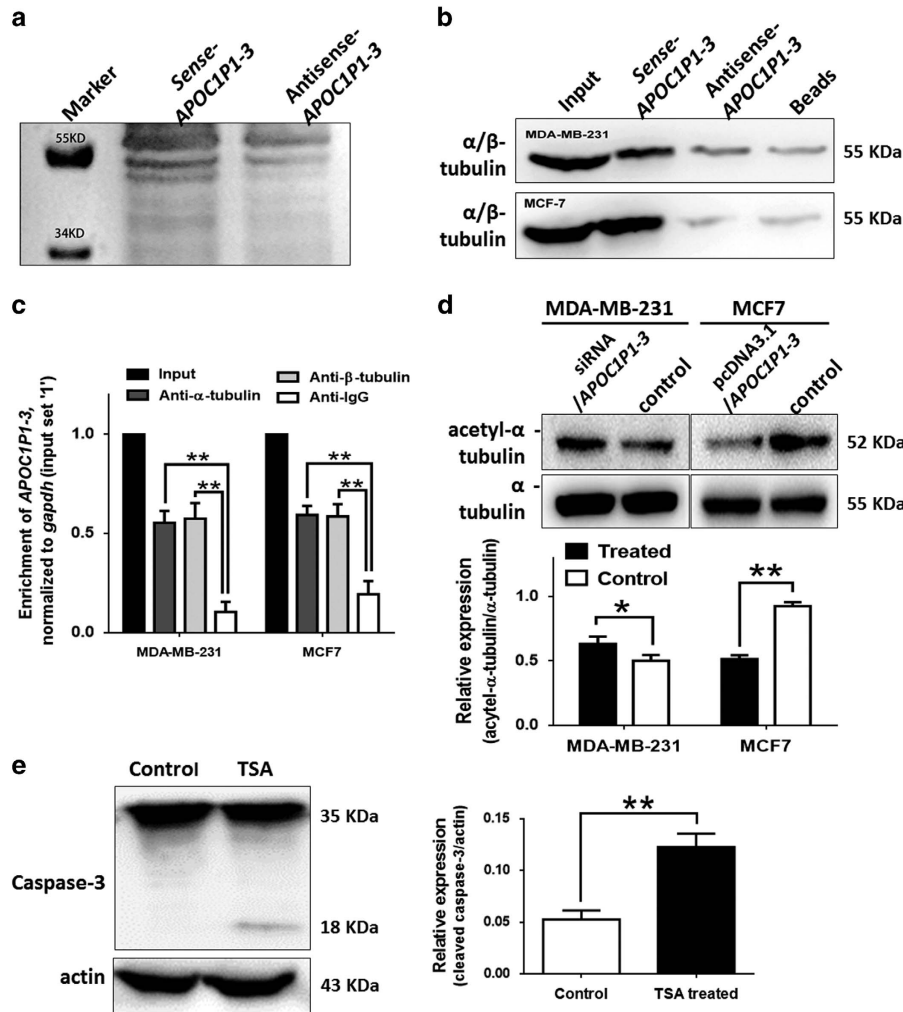


Figure 5 *APOC1P1-3* can bind to tubulin and modify its acetylation levels. (a) RNA pull-down to detect the specific combining proteins of *APOC1P1-3*, silver stain of the SDS-PAGE gel showed that there was a specific bond between 34 and 55 kDa. The bond was cut to mass spectrometry analysis and was identified as tubulin. (b) Western blot to validate the mass spectrometry results in MDA-MB-231 and MCF7 cell lines. (c) Relative RIP experiments were performed with anti-tubulin antibodies on extracts from MDA-MB-231 and MCF7 cells, respectively, with IgG as a negative control. The purified RNA was used for qPCR analysis, and the enrichment of *APOC1P1-3* was normalized to input. $*P < 0.05$ versus control. (d) The α/β -tubulin and acetylated α -tubulin were detected using western blot. The total proteins of both α -tubulin and β -tubulin were not changed, and the acetylated α -tubulin was decreased in *APOC1P1-3* overexpressed groups. (e) Trichostatin A TSA induced caspase-3 activation in MDA-MB-231 cells. Data are shown as the mean \pm S.D. based on at least three independent experiments. Error bars indicate S.D. $*P < 0.05$ versus control; $**P < 0.01$ versus control

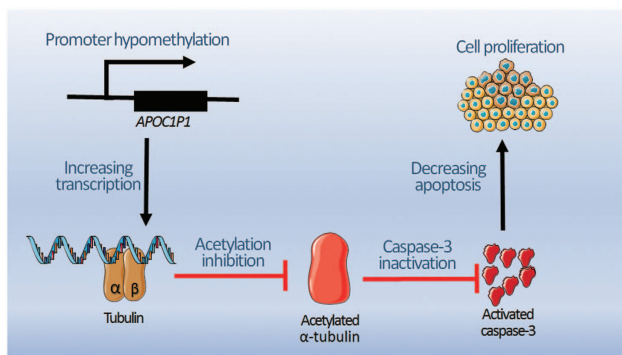


Figure 6 The regulating mechanism of *APOC1P1-3* in breast cancer. Our study demonstrates that *lincRNA-APOC1P1-3* is overexpressed in breast cancer. The promoter region of *APOC1P1* is hypomethylated, which contributes to transcription activation and *APOC1P1-3* overexpression. *LincRNA-APOC1P1-3* can bind to tubulin, and then increase α -tubulin acetylation and inhibit apoptosis

candidate lncRNAs should meet the following criteria: (1) RNA length < 3 kb; (2) negative X-hybridization (cross-hybridization) result: the probe can not be hybridized with other lncRNAs or mRNAs; (3) sequences do not overlap with nearby mRNAs; (4) P -value, as small as possible; fold change, as big as possible; and raw intensity, as high as possible; and (5) comparable with the latest version of the relative database (NCBI Reference Sequence, UCSC Knowngenes, and Ensembl Genome).

Pyrosequencing. The pyrosequencing work was accomplished by the cpqbiotech company (Shanghai, China). Three normal breast tissues and 10 breast cancer tissues were obtained from Huashan Hospital, Fudan University. Primers were designed by PyroMark Assay Design Software 2.0 (Qiagen, Hilden, Germany). Amplification primers sequences (in 5'–3' orientation) and the sequencing primers are listed in the Supplementary Table S2. One of the primers must be biotinylated, which enables conversion of the PCR product to a single-stranded DNA template for pyrosequencing. The technological processes were: (1) bisulfite treatment and elution of genomic DNA (C \rightarrow U and mC \rightarrow mC; Qiagen); (2) PCR amplification (U \rightarrow T and mC \rightarrow C; PyroMark PCR kit, Qiagen, Hilden, Germany). Both methylated and unmethylated DNA sequences of the designated regions were amplified with its specific primers; (3) streptavidin-coated beads separated specific PCR products into single strand; (4) sequencing primer was

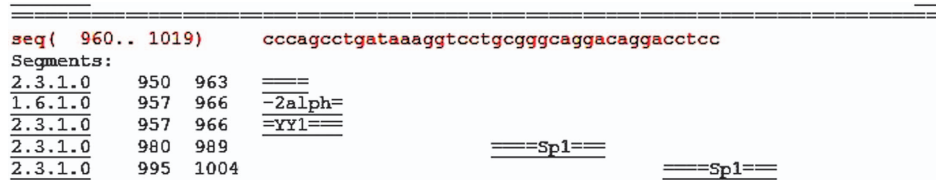


Figure 7 Transcription factor Sp1 is a potential binding protein of the hypomethylation region of *APOC1P1*. AliBaba 2.1 (<http://www.gene-regulation.com/pub/programs/alibaba2/index.html>) was used to predict the binding proteins. The promoter sequence and the binding segments of Sp1 are shown

added, which annealed to a fixed single-stranded DNA template; and (5) quantitative methylation detection by pyrosequencing was completed with Biotage PyroMark Q24 system (Qiagen, Hilden, Germany) according to manufacturer's instructions, and data were analyzed with PyroMark software (Qiagen). Calculation of C:T peaks represent the methylation.⁶

Plasmid and siRNA transfection. The cDNA encoded full-length *lincRNA-APOC1P1-3* was PCR-amplified using primers (5'-CAACCAAGCCCTCCAGCAA G-3' and 5'-GCCTCAGCCTCCGAATAG-3'), amplification was performed for 35 cycles at 95 °C for 45 s, at 60 °C for 45 s, and at 72 °C for 1 min, and subcloned into *Bam* *Hl* and *Xho* *I* sites of a pcDNA3.1 vector (Invitrogen, Carlsbad, CA, USA), named *pcDNA3.1/APOC1P1-3*. Transfections for *pcDNA3.1/APOC1P1-3* and *siRNA/APOC1P1-3* (Supplementary Table S3) were performed using the lipofectamine 2000 (Invitrogen) with Opti-MEM (Gibco, Grand Island, NY, USA) according to the manufacturer's instructions. Total RNA and protein were collected after 24 and 48 h, respectively.

Apoptosis detection. Flow cytometry was used to detect the apoptotic cells. After transfection with lipofectamine 2000 and Opti-MEM for 6 h, cells were maintained in fresh medium supplemented with 1% FBS for 24 h. Thereafter, cells were collected and washed with phosphate-buffered saline. Finally, cell apoptosis was detected by flow cytometry (BD Bioscience, Franklin Lakes, NJ, USA) after incubation with annexin V-FITC and propidium iodide for 15 min. Data were acquired with a BD FACSVerser system and BD FACSuite software. (San Jose, CA, USA)

RNA pull-down. Biotin-labeled, full-length *APOC1P1-3* RNA and antisense *APOC1P1-3* were prepared with Biotin RNA Labeling Mix (Roche, Indianapolis, IN, USA) and T7 RNA polymerase (Roche). Biotinylated RNAs were treated with RNase-free DNase I (Roche) and purified with the RNeasy Mini kit (Qiagen, Valencia, CA, USA). Cell proteins were extracted with the ProteoJETTM Cytoplasmic and Nuclear Protein Extraction kit (Fermentas, St. Leon-Rot, Germany), and then mixed with biotin-labeled RNAs. Washed streptavidin agarose beads (Invitrogen) were added to each binding reaction, incubated at room temperature for 1 h, washed five times and boiled in SDS buffer. Retrieved protein was detected by SDS gel electrophoresis.

RNA immunoprecipitation. The RIP test was performed with the Magna RIP RNA-Binding Protein Immunoprecipitation kit (Millipore, Bedford, MA, USA) and α -tubulin (cat.# 2144, Cell Signaling Technology, Beverly, MA, USA) according to manufacturer's instructions. In brief, beads were mixed with tubulin antibody or IgG and cell lysate, and rotated at room temperature for 4 h. The co-precipitated RNAs were detected by RT-PCR. Total RNAs (input controls) and isotype controls were assayed simultaneously to demonstrate that detected signals were from RNAs, specifically bound to α -tubulin.

Statistical analysis. Data were analyzed using SPSS 17.0 (Chicago, IL, USA). For comparisons, one-way analyses of variance, Fisher's exact tests, χ^2 -tests, and two-tailed student's *t*-tests were performed. $P < 0.05$ was considered to be statistically significant. The diagrams were completed with Prism 5.0 (GraphPad Software, La Jolla, CA, USA).

Conflict of Interest

The authors declare no conflict of interest.

Acknowledgements. This research was supported by grants from the Natural Science Foundation of China (81372849, 81172507, 81272387, and 81470857), Shanghai Municipal Commission of Health (2012-433) and Natural Science

Foundation of Science and Technology Commission of Shanghai Municipality (16ZR1403300).

- Li X, Wu Z, Fu X, Han W. lncRNAs: insights into their function and mechanics in underlying disorders. *Mutat Res Rev Mutat Res* 2014; **762**: 1–21.
- Wang KC, Chang HY. Molecular mechanisms of long noncoding RNAs. *Mol Cell* 2011; **43**: 904–914.
- Lee JT, Bartolomei MS. X-inactivation, imprinting, and long noncoding RNAs in health and disease. *Cell* 2013; **152**: 1308–1323.
- Mourtada-Maarabouni M, Pickard MR, Hedge VL, Farzaneh F, Williams GT. GAS5, a non-protein-coding RNA, controls apoptosis and is downregulated in breast cancer. *Oncogene* 2009; **28**: 195–208.
- Huarte M, Guttman M, Feldser D, Garber M, Koziol MJ, Kenzelmann-Broz D *et al*. A large intergenic noncoding RNA induced by p53 mediates global gene repression in the p53 response. *Cell* 2010; **142**: 409–419.
- Wong CM, Anderton DL, Smith-Schneider S, Wing MA, Greven MC, Arcaro KF. Quantitative analysis of promoter methylation in exfoliated epithelial cells isolated from breast milk of healthy women. *Epigenetics* 2010; **5**: 645–655.
- Goldhirsch A, Winer EP, Coates AS, Gelber RD, Piccart-Gebhart M, Thurlimann B *et al*. Personalizing the treatment of women with early breast cancer: highlights of the St Gallen International Expert Consensus on the Primary Therapy of Early Breast Cancer 2013. *Ann Oncol* 2013 **24**: 2206–2223.
- Zhu QY, Wang Z, Ji C, Cheng L, Yang YL, Ren J *et al*. C6-ceramide synergistically potentiates the anti-tumor effects of histone deacetylase inhibitors via AKT dephosphorylation and alpha-tubulin hyperacetylation both *in vitro* and *in vivo*. *Cell Death Dis* 2011; **2**: e117.
- Howes SC, Alushin GM, Shida T, Nachury MV, Nogales E. Effects of tubulin acetylation and tubulin acetyltransferase binding on microtubule structure. *Mol Biol Cell* 2014; **25**: 257–266.
- Benetatos L, Hatzimichael E, Dasoula A, Dranitsaris G, Tsiara S, Syrrou M *et al*. CpG methylation analysis of the MEG3 and SNRPN imprinted genes in acute myeloid leukemia and myelodysplastic syndromes. *Leuk Res* 2010; **34**: 148–153.
- Wang P, Xue Y, Han Y, Lin L, Wu C, Xu S *et al*. The STAT3-binding long noncoding RNA lnc-DC controls human dendritic cell differentiation. *Science* 2014; **344**: 310–313.
- Souquere S, Beauclair G, Harper F, Fox A, Pierron G. Highly ordered spatial organization of the structural long noncoding NEAT1 RNAs within paraspeckle nuclear bodies. *Mol Biol Cell* 2010; **21**: 4020–4027.
- Yang G, Lu X, Yuan L. lncRNA: a link between RNA and cancer. *Biochim Biophys Acta* 2014; **1839**: 1097–1109.
- Dammann RH, Kirsch S, Schagdarsurengin U, Dansranjav T, Gradhand E, Schmitt WD *et al*. Frequent aberrant methylation of the imprinted IGF2/H19 locus and LINE1 hypomethylation in ovarian carcinoma. *Int J Oncol* 2010; **36**: 171–179.
- Tian F, Tang Z, Song G, Pan Y, He B, Bao Q *et al*. Loss of imprinting of IGF2 correlates with hypomethylation of the H19 differentially methylated region in the tumor tissue of colorectal cancer patients. *Mol Med Rep* 2012; **5**: 1536–1540.
- Gupta S, Jaworska-Bieniek K, Narod SA, Lubinski J, Wojdacz TK, Jakubowska A. Methylation of the BRCA1 promoter in peripheral blood DNA is associated with triple-negative and medullary breast cancer. *Breast Cancer Res Treat* 2014; **148**: 615–622.
- Shen Y, Wang Z, Loo LW, Ni Y, Jia W, Fei P *et al*. LINC00472 expression is regulated by promoter methylation and associated with disease-free survival in patients with grade 2 breast cancer. *Breast Cancer Res Treat* 2015; **154**: 473–482.
- Yuan SX, Zhang J, Xu QG, Yang Y, Zhou WP. Long noncoding RNA, the methylation of genomic elements and their emerging crosstalk in hepatocellular carcinoma. *Cancer Lett* 2015 (doi:10.1016/j.canlet.2015.08.008; e-pub ahead of print).
- Yang F, Zhang L, Huo XS, Yuan JH, Xu D, Yuan SX *et al*. Long noncoding RNA high expression in hepatocellular carcinoma facilitates tumor growth through enhancer of zeste homolog 2 in humans. *Hepatology* 2011; **54**: 1679–1689.
- Khalil AM, Guttman M, Huarte M, Garber M, Raj A, Rivea Morales D *et al*. Many human large intergenic noncoding RNAs associate with chromatin-modifying complexes and affect gene expression. *Proc Natl Acad Sci USA* 2009; **106**: 11667–11672.
- Tsai MC, Manor O, Wan Y, Mosammamaparast N, Wang JK, Lan F *et al*. Long noncoding RNA as modular scaffold of histone modification complexes. *Science* 2010; **329**: 689–693.
- Huang JF, Guo YJ, Zhao CX, Yuan SX, Wang Y, Tang GN *et al*. Hepatitis B virus X protein (HBx)-related long noncoding RNA (lncRNA) down-regulated expression by HBx (Dreh)

- inhibits hepatocellular carcinoma metastasis by targeting the intermediate filament protein vimentin. *Hepatology* 2013; **57**: 1882–1892.
23. Nogales E. Structural insights into microtubule function. *Annu Rev Biochem* 2000; **69**: 277–302.
24. Janke C. The tubulin code: molecular components, readout mechanisms, and functions. *J Cell Biol* 2014; **206**: 461–472.
25. Wloga D, Gaertig J. Post-translational modifications of microtubules. *J Cell Sci* 2010; **123**: 3447–3455.
26. Westermann S, Weber K. Post-translational modifications regulate microtubule function. *Nat Rev Mol Cell Biol* 2003; **4**: 938–947.
27. Li L, Yang XJ. Tubulin acetylation: responsible enzymes, biological functions and human diseases. *Cell Mol Life Sci* 2015; **72**: 4237–4255.
28. Takano S, Yoshitomi H, Togawa A, Sogawa K, Shida T, Kimura F et al. Apolipoprotein C-1 maintains cell survival by preventing from apoptosis in pancreatic cancer cells. *Oncogene* 2008; **27**: 2810–2822.
29. Fan Y, Wang J, Yang Y, Liu Q, Fan Y, Yu J et al. Detection and identification of potential biomarkers of breast cancer. *J Cancer Res Clin Oncol* 2010; **136**: 1243–1254.
30. Vikram R, Ramachandran R, Abdul KS. Functional significance of long non-coding RNAs in breast cancer. *Breast Cancer* 2014; **21**: 515–521.



Cell Death and Disease is an open-access journal published by *Nature Publishing Group*. This work is licensed under a **Creative Commons Attribution 4.0 International License**. The images or other third party material in this article are included in the article's Creative Commons license, unless indicated otherwise in the credit line; if the material is not included under the Creative Commons license, users will need to obtain permission from the license holder to reproduce the material. To view a copy of this license, visit <http://creativecommons.org/licenses/by/4.0/>

Supplementary Information accompanies this paper on *Cell Death and Disease* website (<http://www.nature.com/cddis>)