

Five additions to the list of Sepsidae (Diptera) for Vietnam: *Perochaeta cuirassa* sp. n., *Perochaeta lobo* sp. n., *Sepsis spura* sp. n., *Sepsis sepsi* Ozerov, 2003 and *Sepsis monostigma* Thompson, 1869

Yuchen Ang[†], Rudolf Meier[‡]

Evolutionary Biology Laboratory, Department of Biological Sciences, National University of Singapore, Singapore 117543, Republic of Singapore

[†] [urn:lsid:zoobank.org:author:6DB33151-6995-4462-8AF9-470E5E8784C7](https://doi.org/urn:lsid:zoobank.org:author:6DB33151-6995-4462-8AF9-470E5E8784C7)

[‡] [urn:lsid:zoobank.org:author:854F05EB-7323-496B-8F20-AD6ACFECC1EB](https://doi.org/urn:lsid:zoobank.org:author:854F05EB-7323-496B-8F20-AD6ACFECC1EB)

Corresponding author: Yuchen Ang (yuchen@nus.edu.sg)

Academic editor: Martin Hauser | Received 4 September 2010 | Accepted 15 November 2010 | Published 29 November 2010

[urn:lsid:zoobank.org:pub:327B3E99-46C3-4D1E-9B74-5C3369F8969F](https://doi.org/urn:lsid:zoobank.org:pub:327B3E99-46C3-4D1E-9B74-5C3369F8969F)

Citation: Ang Y, Meier R (2010) Five additions to the list of Sepsidae (Diptera) for Vietnam: *Perochaeta cuirassa* sp. n., *Perochaeta lobo* sp. n., *Sepsis spura* sp. n., *Sepsis sepsi* Ozerov, 2003 and *Sepsis monostigma* Thompson, 1869. ZooKeys 70: 41–56. doi: 10.3897/zookeys.70.766

Abstract

A recent collecting trip to Vietnam yielded three new species and two new records of Sepsidae (Diptera) for the country. Here we describe two new species in the species-poor genus *Perochaeta* (*Perochaeta cuirassa* sp. n. and *P. lobo* sp. n.) and one to the largest sepsid genus *Sepsis* (*Sepsis spura* sp. n.) which is also found in Sumatra and Sulawesi. Two additional *Sepsis* species are new records for Vietnam (*Sepsis sepsi* Ozerov, 2003; *Sepsis monostigma* Thompson, 1869). We conclude with a discussion of the distribution of *Perochaeta* and the three *Sepsis* species.

Keywords

Sepsidae, *Perochaeta*, *Sepsis*, new species, new records, Vietnam

Introduction

The Sepsidae are a moderately large, cosmopolitan family of saprophagous flies, with over 300 extant species recorded from all zoogeographic regions (Ozerov 2005). Most species are attracted to dung, carrion, and other malodorous, decaying organic substrates (Pont and Meier 2002); i.e., by using different substrates in different microhabitats, the sepsid fauna from a specific locality can be quickly explored. Separating sepsids from the remaining saprophagous insects is also relatively straightforward because most sepsids can be easily recognized based on the constriction of the first two abdominal segments which gives the flies a wasp- or ant-like habitus.

Here we update an existing species list for Vietnam by adding five species: three are new to science while two others are new records. The relatively large number of additions is due to the fact that the Vietnamese sepsid fauna remains poorly studied (e.g. Ozerov 1993, Iwasa and Thinh 2008). The current species list comprises 21 species in six genera and is based on the sepsid world catalogue (Ozerov 2005) and subsequent taxonomic research by Iwasa and Thinh (2008). We complement this list by adding five species that were collected during a brief collecting trip in July 2010: *Perochaeta cuirassa* sp. n., *P. lobo* sp. n., *Sepsis spura* sp. n., *S. sepsi* and *S. monostigma*.

Materials and methods

All five species were collected between 11–16 July 2010 from Northern Vietnam (Ba Vi National Park and Sa Pa Valley). Cow dung was placed in various habitats for at least a few hours to attract sepsids, which were then caught by sweep-netting. Additional material for *Sepsis sepsi* and *S. spura* were also collected previously in Indonesia (Sulawesi and Sumatra) in 2007 and 2009.

Specimens were photographed using a Leica Z16 APO-A stereomicroscope fitted with a DFC425 digital microscope camera, and then digitally traced to illustrations using a Wacom® PTZ 630 tablet. We also amplified and sequenced a 544-bp fragment of cytochrome oxidase c subunit I (COI) within the DNA barcoding region for the two new *Perochaeta* species based on the methods described in Tan et al. (2010). All type specimens and additional material are vouchered in 95% ethanol and kept in the Cryogenic Collection of the Raffles Museum of Biodiversity and Research (RMBR), National University of Singapore, Singapore. We adopt the taxonomic terminology as described by Merz and Haenni (2000) for adult morphology (excluding terminalia) and Sinclair (2000) for male genitalia.

Taxonomy

Describing new species in genera that have not been revised recently requires extra care and justification, because the risk of creating new synonyms based on overlooked or misinterpreted species in the literature is high. Fortunately, this is not the case for *Pero-*

et al. (in press), in such cases descriptions should only be prepared if the species are unusually distinct. This is the case here, whereby the two new species can be clearly distinguished based on both morphology [cf. sternites and hypopygia of *P. cuirassa* (Figs 1–4) and *P. lobo* (Figs 6–9)] and DNA sequence data (Table 1). When the distributional and morphological data are applied to the remaining species concepts in Wheeler and Meier (2000), most support the same species boundaries. The only exception is Mishler and Theriot's (2000) phylogenetic species concept that requires a phylogenetic analysis before species can be delimited. However, such analyses are currently unavailable. We now describe the new *Perochaeta* and *Sepsis* species and state the new records for the two *Sepsis* species.

***Perochaeta cuirassa* Ang 2010, sp. n.**

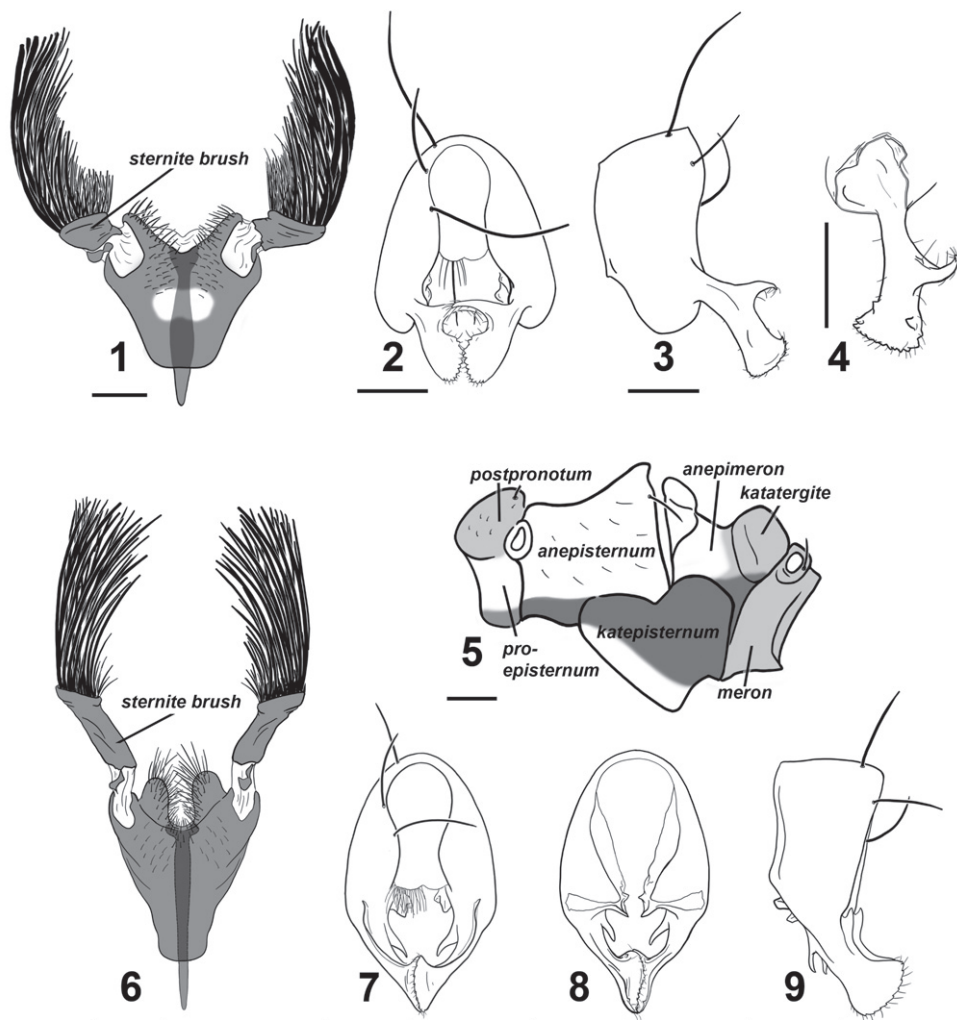
urn:lsid:zoobank.org:act:76BA1CDF-D467-45D0-9898-305C21045C6D

Figs 1–5

Material. *Holotype*. ♂ (RMBR), **Vietnam**, Lào Cai Province, Sa Pa Valley. Baited with cow dung at forest edge next to a small cascade alongside highway, ca. 850m along the road westward of the Thác bạc (Silver Waterfall) tourist attraction [22°23'23.90"N 103°44'50.32"E, elevation 2600m above sea level, ASL]. Collected 16.VII.2010 (Ang Y). *Paratypes*. 2 ♂ (RMBR), collected from same locality and time as holotype.

Etymology. The specific epithet refers to the shape of the main scleral plate for the 4th sternite, which resembles a cuirass or breastplate armor.

Diagnosis. Adult male *Perochaeta cuirassa* is very similar to *Perochaeta lobo* and can only be reliably distinguished from the latter based on the 4th sternite [cf. *P. cuirassa* (Fig. 1) and *P. lobo* (Fig. 6)]: The sternite in *P. cuirassa* lacks distinct lobes on the posterior end of the 4th sternite, while the sternite brush is thick and squat (as opposed to long and thin in *P. lobo*), and the main scleral plate is much broader (long as wide) than in *P. lobo* (twice long as wide). The hypopygium [cf. *P. cuirassa* (Figs 2–4) and *P. lobo* (Figs 7–9)] is also distinct, with *P. cuirassa* bearing a large median, decussating protrusion on the dorsal side of the surstylus, while *P. lobo* has a sub-median protrusion on the ventral side of the surstylus. *Perochaeta cuirassa* is also readily distinguished from all other *Perochaeta* species based on the morphology of the 4th sternite and hypopygium: The sternites brush of *P. cuirassa* (Fig. 1) has significantly more bristles (>40 per brush) than either *P. hennigi* Ozerov, 1992 (Fig. 10) or *P. dikowi* (Fig. 12), both of which have only 5–6 large bristles in addition to a few weaker bristles. *Perochaeta cuirassa* also has strong bristles lining the distal margin of the sternite, which are not found in *P. dikowi* or *P. hennigi*. The surstylus of *P. cuirassa* (Fig. 2) resembles that of *P. hennigi* (Fig. 11), but can be distinguished by the large median surstylus projection, which is long and curved in *P. cuirassa* but short and broadly triangular in *P. hennigi*. Both *P. dikowi* (Fig. 13) and *P. orientalis* (De Meijere, 1913) (Fig. 14) lack large median projections. *Perochaeta cuirassa* can further be distinguished by the radial-medial cross-vein dividing the discal-medial cell which is in a ratio of 3 : 1 in *P. cuirassa*, 2.5 : 1 in *P. dikowi*, 2 : 1 in *P. hennigi* and 1 : 1 in *P. orientalis*.



Figures 1–9. *Perochaeta cuirassa* and *Perochaeta lobo* ♂. *Perochaeta cuirassa*: **1** 4th sternite, ventral **2** hypopygium, dorsal **3** hypopygium, lateral **4** surstylus, lateral (inward facing) **5** pleural pruinosity pattern, lateral. *Perochaeta lobo*: **6** 4th sternite, ventral **7** hypopygium, dorsal **8** hypopygium, ventral **9** hypopygium, lateral. Scale bars: 0.5mm.

Description (male). *Colour.* Head capsule mostly black except for thin yellow strip along subgena and parafacial area. Lunule, facial carina and antennae light brown; antennal groove dark brown. Proboscis brown. Thorax, scutellum and abdomen wholly black. Legs largely yellow except for the following: basal regions of fore coxa brown, mid and rear femora with a dark half-ring subapically (edges of which are diffuse on the apical edge), basal half of mid and rear tibiae dark brown. All tarsi with tarsomeres 3–5 brown; tarsomeres 1–2 yellow with brown region apically. Wing clear except for basicostal cell and basal third of costal cell, which is brown. Veins

dark brown. Calypter creamy, margin and fringe-hairs yellowish. Haltere milky yellow with brown base.

Head. Roundish, facial carina short and shallow, facial area receding. Gena and parafacial region narrow. Ocellar prominence and occipital region lightly microtomentose. Chaetotaxy: 1 *ocellar*, 1 divergent *postocellar*, 1 *outer vertical*; *inner vertical* absent. *Orbital* very reduced to absent. 2 *vibrissae*. 3–4 *postocular*. Lower fascial margin lined with setulae.

Thorax. Scutum, postpronotum, scutellum and subscutellum wholly microtomentose. Mediotergite microtomentose but glossy in the medial region. Scutellum twice wide as long. Pleural pruinosity pattern (Fig. 5): Proepisternum glossy with ventral region microtomentose. Anepisternum largely glossy with anteroventral region densely microtomentose. Katepisternum largely with dense tomentosity except for glossy anteroventral region. Anterior side of anepimeron glossy while posterior side lightly microtomentose and posteroventral region densely microtomentose. Postpronotum, katatergite, meron and metepimeron lightly-dusted. Chaetotaxy: 1 *apical scutellar*, 1 reduced, setulae-like *basal scutellar*, 1 *dorsocentral*, 1 *postalar*, 1 *supraalar*, 2 *notopleural*, 1 *postpronotal*, 1 *anepisternal* and 1 *posterior spiracular*. Postpronotum, prescutum and anepisternum with few, sporadic setulae.

Legs. Forelegs unmodified in males; all femora and tibiae without posteriodorsal or anteriodorsal setae. Mid tibia with row of short setae on anterior apex. Rear tibia with barely-visible osomoterial patch on medial posteriodorsal side. Rear basitarsus with three ventral dark spines basally.

Wings. Without pterostigma. Veins bare. Covered with microtrichiae except for costal, subcostal, basal-medial and posterior-cubital cells, as well as base of cells r1 and r2+3. Microtrichiae sparse on basal region of basal-radial and discal-medial cells. Radial-medial cross-vein divides discal-medial cell by ratio of 3 : 1. Length: 4.6–4.9 mm.

Abdomen. Glossy black; syntergite 1+2 – tergite 5 normal, tergite 6 missing, syntergite 7+8 present and extending ventrad as a narrow sclerite. Spiracles 1–4 on intersegmental membrane, spiracle 5 on ventral margin of tergite 5, spiracle 7 and 8 adjacent on margin of syntergite 7+8. Sternite 1 broadly rectangular while sternite 2 is triangular, tapering posteriorly; sternite 3 is oblong. 4th sternite heavily modified (Fig. 1); greatly expanded, long as is wide, and in the shape of a breastplate. Two stout moveable appendages (= sternite brushes) branch off laterally; each appendage resembles a painter's brush, with large, thick bristles on the outer side and shorter, thinner bristles on the inner side. Posterior edge of 4th sternite invaginated with strong setae lining the outer discal margin as well as submedially. A Y-shaped apodeme extends underneath and anterior to the 4th sternite.

Hypopygium (Figs 2–4). Cercal plate with two very weak lobes; distal margin of each lobe covered with numerous setae. Hypopygium triangular with a two tooth-like projections on the inner side basal to where the surstylus branches off (Fig. 4). Surstylus itself fused to hypopygium, angled dorsally, and branches off subterminally (Fig. 3). Each surstylus has a large hook-like median projection that curves dorsally and decussates. Terminal section of surstylus shaped like a scapula, with cuticular “teeth” and

setulae on distal margin, and a small inward-facing “tooth” on both the ventral and dorsal region subterminally pointing towards the median.

Distribution. Vietnam (Lào Cai).

***Perochaeta lobo* Ang 2010, sp. n.**

urn:lsid:zoobank.org:act:5B7C6CFA-9DCC-4377-9893-CBD789E333E9

Figs 6–9

Material. *Holotype*. ♂ (RMBR), **Vietnam**, Lào Cai Province, Sa Pa Valley. Baited with cow dung at forest edge next to a small cascade alongside highway, ca. 850m along the road westward of the Thác bạc (Silver Waterfall) tourist attraction [22°23'23.90N 103°44'50.32E, elevation 2600m above sea level, ASL]. Collected 16.VII.2010 (Ang Y).

Etymology. The specific epithet is a phonetic translation of Greek “λοβό”, which refers to the large, distinct lobe found on each lateral half on the posterior margin of the 4th sternite.

Diagnosis. The adult male is very similar to *P. cuirassa* and can only be reliably distinguished based on the 4th sternite and hypopygium. The 4th sternite [cf. *P. lobo* (Fig. 6) and *P. cuirassa* (Fig. 1)] can be distinguished to species by the presence of distinct lobes on the posterior end, the long, thin sternite brush (as opposed to short and squat in *P. cuirassa*), and the sternite itself being narrower (half wide as long). The structure of the hypopygium (Figs 7–9) is also diagnostic given that it is the only *Perochaeta* with a surstylus that has a dorsal flap along its length and a long distal-pointing projection sub-basally. Other diagnostic characters that distinguish *P. lobo* from *P. dikowi*, *P. hen-nigi* and *P. orientalis* as described in diagnosis for *P. cuirassa*.

Description (male). *Colour.* As described in *P. cuirassa* except for fore and rear basitarsi, which are brown with yellow base, mid basitarsus yellow with slight brown region apically.

Head. As described in *P. cuirassa*.

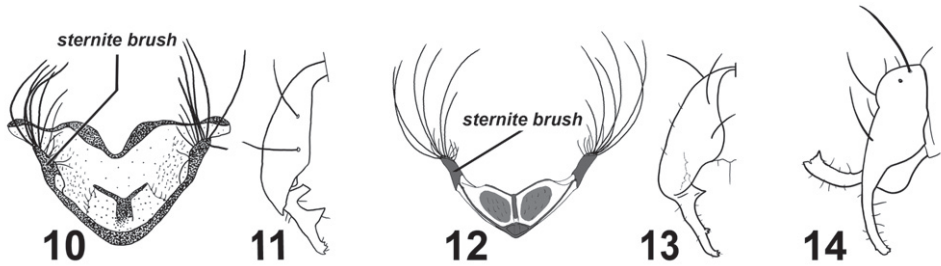
Thorax. As described in *P. cuirassa*; pleural pruinosity pattern as in Fig. 5.

Legs. Forelegs unmodified; as described in *P. cuirassa*.

Wings. Coloration, venation and microtrichia distribution as described in *P. cuirassa*. Length: 4.2 mm.

Abdomen. Tergites and sternites 1–3 as described in *P. cuirassa*. Sternite 4 heavily modified (Fig. 6); almost twice long as wide and raised from the abdomen. Posterior edge of 4th sternite deeply invaginated and raised to form two large distinct lobes densely populated with strong bristles, mainly lining the outer discal margin. Two long, thin moveable appendages (= sternite brushes) branch off laterally on the posterior end of the sclerite, each with large, thick bristles on the outer region and some shorter, thinner bristles closer to the inside. A Y-shaped apodeme extends underneath and anterior to the 4th sternite.

Hypopygium (Figs 7–9). Cercal plate with two very weak lobes; distal margin covered with numerous setae. Hypopygium triangular with bicuspid projection before the



Figures 10–14. Various *Perochaeta* 4th sternites and hypopygia. *Perochaeta hennigi* ♂ redrawn from Ozerov (1992): **10** 4th sternite, ventral **11** hypopygium (half), dorsal. *Perochaeta dikowi* ♂ redrawn from Ang et al. (2008): **12** 4th sternite, ventral **13** hypopygium (half), dorsal. *Perochaeta orientalis* ♂ redrawn from Duda (1926): **14** hypopygium, lateral.

base of the surstylus. Surstylus itself fused to hypopygium and branches off terminally, with a dorsal flap along its length and a longish distal-pointing projection sub-basally. Terminal section of surstylus shaped like a scapula, with distal-pointing cuticular “teeth” and setulae on distal margin, and a very small inward-facing “tooth” on both the ventral and dorsal region subterminally pointing towards the median.

Distribution. Vietnam (Lào Cai).

Sepsis monostigma Thompson, 1869

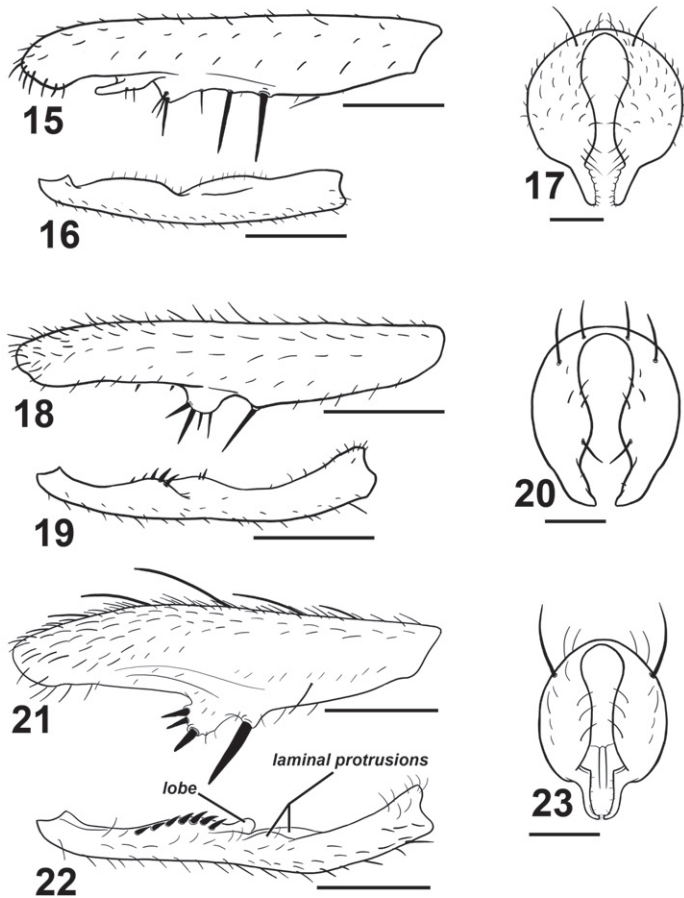
Figs 15–17

Sepsis monostigma Thompson, 1869. Kongliga svenska fregatten Eugénies resa omkring Jorden, 2(1): 443.

Material. ♂♂♀♀ (RMBR), **Vietnam**, Lào Cai Province, Sa Pa Valley. From ex culture established from ♀ collected from dung on cow farm, 4km NE of Sa Pa town [22°21'28.19"N 103°51'53.35"E, elevation 1250m ASL]. Collected 15.VII.2010 (Ang Y).

Taxonomic remarks. *Sepsis monostigma* is an Oriental species that resembles *Sepsis pseudomonostigma* Ursu, 1969 but is geographically exclusive from *S. pseudomonostigma* (which has only been recorded in South and South-east Europe and Central Asia). *Sepsis monostigma* can be differentiated by the two long medioventral spines (one short spine in *S. pseudomonostigma*) on the fore femur (Fig. 15), lack of ventromedial spinules on the fore tibia (Fig. 16) and surstylus (Fig. 17) being much thinner than that in *S. pseudomonostigma*.

Distribution. China (Guandong), Taiwan, India (Jammu and Kashmir, Uttar Pradesh, West Bengal), Japan (Hokkaido Is., Honshu Is., Kyushu Is.), Korea, Philippines (Luzon Is.), Sri Lanka, South Russia (Amurskaya Oblast', Irkutskaya Oblast', Khabarovskiy Kray, Krasnoyarskiy Kray, Novosibirskaya Oblast', Primorskiy Kray, Sakhalinskaya Oblast'), Vietnam (Lào Cai).



Figures 15–23. Various *Sepsis* forelegs and hypopygia. *Sepsis monostigma*: **15** fore femur, posterior **16** fore tibia, posterior **17** hypopygium, dorsal. *Sepsis sepsi*: **18** fore femur, posterior **19** fore tibia, posterior **20** hypopygium, dorsal. *Sepsis nitens*: **21** fore femur, posterior **22** fore tibia, posterior **23** hypopygium, dorsal. Scale bars: 0.5mm.

***Sepsis sepsi* Ozerov, 2003**

Figs 18–20

Sepsis sepsi Ozerov 2003. Zoologicheskii zhurnal, 82, 10: 1276.

Material. ♂♂♀♀ (RMBR), **Vietnam**, Ha Tay Province, Ba Vi National Park. From ex culture established from ♀ collected from rubbish dump near temple at summit of mountain [21°3'45.84"N 105°21'57.63"E, elevation 800m ASL]. Collected 11.VII.2010 (Ang Y). 2 ♂ (RMBR), **Indonesia**, West Sumatra, Bukit Tingei Regency, Tanjung Mutiara Dist., Bantar Gadang Beach, [0°24.792"S 99°56.307"E 0m ASL]. Collected 6.VII.2007 (Lohman D).

Taxonomic remarks. *Sepsis sepsi* bears some resemblance to *S. nitens* and was initially thought to be such by Hennig but later identified it as a ‘*Sepsis* n. sp.’ (1941), and was formally described by Ozerov (2003). *Sepsis sepsi* can be distinguished from *S. nitens* based on the row of four large spines on a large rounded ventromedial bump of the fore femur (Fig. 18) as opposed to three spines arranged triangularly on a slightly proclinate bump in *S. nitens* (Fig. 21). The fore tibia (Fig. 19) lacks a rounded lobe present in *S. nitens* (Fig. 22), and the surstylus differs in structure [cf. *S. sepsi* (Fig. 20) and *S. nitens* (Fig. 23)].

Distribution. Indonesia (Sumatra, Sumbawa), Vietnam (Ha Tay).

***Sepsis spura* Ang 2010, sp. n.**

urn:lsid:zoobank.org:act:581DEFE8-8274-4365-BCDF-7F34BB59A258

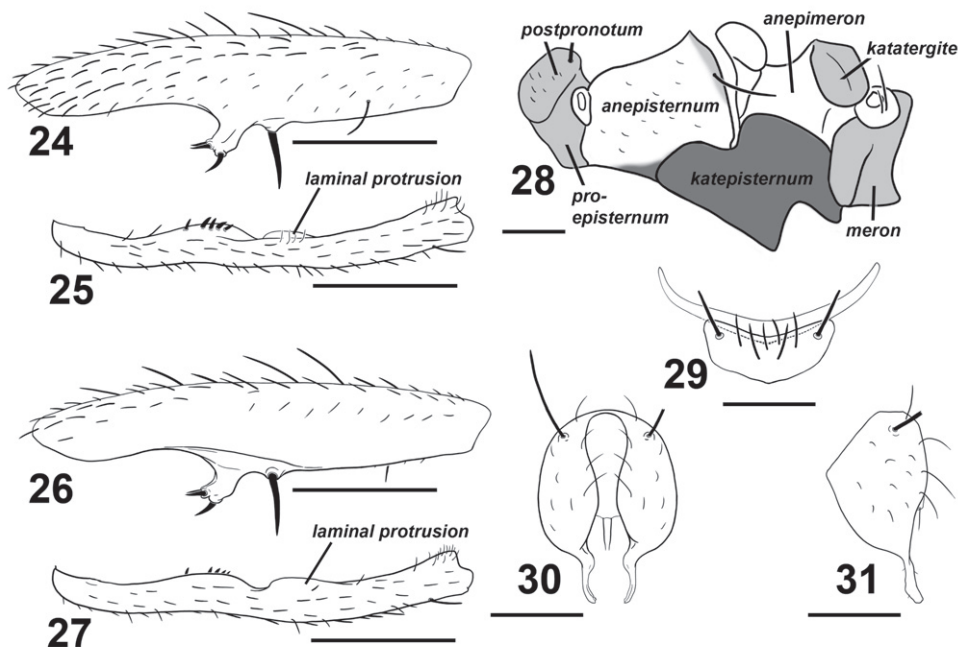
Figs 24–31

Material. *Holotype*. ♂ (RMBR), **Vietnam**, Lào Cai Province, Sa Pa Valley. Collected from dung on cow farm, 4km NE of Sa Pa town [22°21'28.19"N 103°51'53.35"E, elevation 1250m ASL]. Collected 15.VII.2010 (Ang Y). *Paratypes*. 2 ♂ (RMBR), **Indonesia**, West Sumatra, Bukit Tingei Regency, Tanjung Mutiara Dist., Bantar Gadang Beach, [0°24.792"S 99°56.307"E 0m ASL]. Collected 6.VII.2007 (Lohman D). ♂ (RMBR), **Indonesia**, N. Sulawesi, Tondano Province, Kampung Jawa [1°17'18.11"N, 124°52'30.05"E, elevation 650m ASL]. Collected 12.V.2009 (Ang Y).

Etymology. The specific epithet old English for “spur”, and refers to the distinct spur-like medioventral tubercle found on the male fore femur.

Diagnosis. Adult males of *Sepsis spura* closely resemble *Sepsis nitens* but can be distinguished by the following characters: (1) Medioventral tubercle on male fore femur of *S. spura* is spur-like and bent at a forward angle with two smaller adjacent spines dorsally positioned at the end of the tubercle and one larger spine at the ventral end (Figs 24, 26), while the tubercle in *S. nitens* is thicker on the base and has its three spines positioned more in a antero-posterior fashion (Fig. 21). (2) The basal lamina-like projection on the fore tibia of *S. spura* (Figs 25, 27) merges back with the tibia gently, but ends off with a distinct lobe in *S. nitens* (Fig. 22). The short spines found posteriorly on the projection are also much weaker than those found in *S. nitens*. (3) *Sepsis spura* (Figs 25, 27) has only one anterior lamina-like protrusion on the distal portion of the fore tibia, while *S. nitens* (Fig. 22) has such protrusions on both anterior and posterior sides. (4) The surstylus of *S. nitens* (Fig. 23) has a rather angular basal swelling and is relatively straight, curved only at the terminus, while the surstyli of *S. spura* (Figs 30, 31) has a rounded basal swelling and is medially curved for the entirety of the surstylus. *Sepsis spura* can be distinguished from other *Sepsis*, also based on the specific structure of the male fore leg ornamentation and the shape of the surstylus.

Description (male). *Colour.* Head capsule mostly brown with a thin light brown strip on gena; fascial margin black. Vertex dark brown. Facial carina and lunule light grey-brown. Pedicel dark brown, 1st flagellomere yellowish, arista brown. Proboscis whit-



Figures 24–31. *Sepsis spura*. **24** fore femur, posterior **25** fore tibia, posterior **26** fore femur, anterior **27** fore tibia, anterior **28** pleural pruinosity pattern, lateral **29** 4th and 5th sternites, ventral **30** hypopygium, dorsal **31** hypopygium, lateral. Scale bars: 0.5mm.

ish yellow. Forelegs wholly yellow. Mid and rear coxa yellow with brown base. Mid femur brown but yellow on basal and distal tips; mid tibia brown on basal half and diffuses to yellow on apical half. Rear femur yellow but brown on dorsal region, while rear tibia wholly brown. Fore tarsus with tarsomeres 3–5 brown, mid tarsus with tarsomeres 3–5 very lightly brown, rear tarsus with tarsomeres 4 and 5 brown. Wing clear except for basicostal cell and basal region of costal cell, which is light brown. Veins dark brown. Calypter clear, margin and fringe-hairs yellowish. Haltere white. Thorax mostly dark brown, but pronotopleuron is yellow. Abdominal tergites and sternites glossy dark brown.

Head. Roundish, facial carina short and shallow, facial area receding. Gena and parafacial region narrow. Largely glossy except for lightly microtomentose occipital region. Chaetotaxy: 1 *ocellar*, 1 divergent *postocellar* (*ocellar* longer than *postocellar*), 1 *inner vertical*, 1 *outer vertical* (*outer* subequal to *inner*). *Orbital* very reduced to absent. 3–4 *vibrissae*. 3–4 *postocular*. Lower fascial margin lined with setulae.

Thorax. Scutum, postpronotum and scutellum wholly microtomentose. Subscutellum microtomentose with a small glossy spot ventromedially. Mediotergite microtomentose on margins and glossy in the medial region. Scutellum twice wide as long. Pleural pruinosity pattern (Fig. 28): Proepisternum lightly microtomentose. Anepisternum largely glossy with a small strip on the anteroventral and posteriodorsal margins very lightly dusted. Balsare glossy. Katepisternum densely microtomentose.

Anepimeron glossy. Katatergite, meron and metepimeron microtomentose. Chaetotaxy: 1 *apical scutellar*, 1 reduced *basal scutellar*, 1 row *dorsocentral* with posterior-most two setae as bristles, 1 row *acrostichial* and 1 *postalar*, 1 *supraalar*, 1 *notopleural*, 1 *postpronotal*, 1 *anepisternal* and 2 *posterior spiracular*.

Legs. Forelegs modified; fore femur (Figs 24, 26) with large submedian ventral spine and robust, forward curving spur-like protrusion at the median. This protrusion terminates with three short stout spines, with two adjacently positioned dorsally and one positioned ventrally. Fore tibia (Figs 25, 27) with a submedial and medial cuticular laminar extension; submedial extension with row of short spines. Additional chaetotaxy: Fore tibia with apical *anteriodorsal*. Mid femur with 1 *anterior*. Mid tibia with 2 *posterior* on median and subapex, 2 *dorsal* on basal 2/3 and apex, 1 *anterior* on apex, 1 *anterioventral* on basal 2/3 and 1 *ventral* on apex. Hind femur with 1 *anteriodorsal* on basal 2/3 and 1 *posterioventral* subapically. Hind tibia with 2 *dorsal* at median and subapically, 1 *anterior* at median and 2 *anterioventral* medially and subapically. Rear basitarsus with 2 ventral dark spines basally.

Wings. Without pterostigma. Veins bare. Covered with microtrichiae except for basal half of basal-medial cell. Anterior region of r2+3 cell with sparse microtrichiae. Radial-medial cross-vein divides discal-medial cell by ratio of slightly less than 2 : 1. Length: 2.9–3.5mm.

Abdomen. Tergites glossy black, syntergite 1+2 – tergite 5 normal, tergite 6 missing, syntergite 7+8 present and extending ventrad as a narrow sclerite. Spiracles 1–3 on intersegmental membrane close to tergite, spiracles 4 and 5 within respective tergites near margin. Spiracles 7 and 8 adjacent on margin of syntergite 7+8. Sternite 1 a broad rectangle with posterior invaginations while sternite 2 is triangular, tapering posteriorly; sternite 3 is oblong. Sternite 4 is V-shaped with setae and one stout discal bristle on each lateral margin; sternite 5 reduced to a thin lateral crescent (Fig. 29).

Hypopygium. Cercal plate with two very weak lobes, each with single distal setae. Hypopygium and surstylus relatively setaeless. Surstylus fused to hypopygium; bulging medially at base but thin and curved medially, slightly dentate terminally (Figs 30, 31).

Distribution. Indonesia (Sulawesi, Sumatra), Vietnam (Lào Cai).

Key to species of the genus *Perochaeta* Duda, 1926 (males)

- | | | |
|---|---|---|
| 1 | Ratio of radial-medial cross-vein dividing discal-medial cell is 1:1..... | 2 |
| – | 1:2 to 1:3..... | 3 |
| 2 | Surstylus without large medial protrusions; with small dentate terminus | <i>Perochaeta orientalis</i> Duda, 1926 |
| – | Sternite brush embedded in membrane..... | 4 |
| 3 | Sternite brush as a free sclerotized lobe..... | 5 |
| – | Sternite brush with few bristles (ca. 5 short and 5 long bristles); surstylus with large, squat triangular protrusion on inward median..... | <i>Perochaeta hennigi</i> Ozerov, 1992 |

- 4 Surstylus without any large medial protrusions 6
 – Surstylus with large medial protrusions 7
 5 Sternite brush with few bristles (ca. 5 short bristles and 5 long bristles); surstylus without large median protrusions *Perochaeta dikowi* Ang et al., 2008
 – Medial protrusion emerges dorsally on surstylus; posterior margin of 4th sternite V-shaped with many bristles *Perochaeta cuirassa* Ang, 2010
 6 Medial protrusion emerges ventrally on surstylus; posterior margin of 4th sternite as two distinct lobes with many bristles..... *Perochaeta lobo* Ang, 2010

Discussion

Notes on *Perochaeta*

Perochaeta cuirassa and *P. lobo* are the first *Perochaeta* species from Vietnam. That they are found in the same locality is surprising, given that *Perochaeta* is a small Oriental genus with only three described species. As discussed in Ang et al. (2008), the species in this genus appear to be only found in mid- and high-elevation localities in Asia above 650m ASL: *Perochaeta dikowi* was found on Fraser's Hill, Malaysia (1300m ASL; Ang et al. 2008), *P. hennigi* is only known from Thawalammenne, Sri Lanka (670m ASL; Ozerov 1992) and Tamil Nadu, India (1200m and 1400m ASL; Iwasa and Tewari 1994). The type locality of *P. orientalis* is the Jiji Township in Taiwan ("Chip-chip" as designated by de Meijere; Duda 1926) which is within the Chung Yang mountain range that has an average elevation >1000m ASL, and can also be found in regions such as Indonesia (Seram Is., 750m; Iwasa 2001). The new species *P. cuirassa* and *P. lobo* were found at 2600m ASL. A male *Perochaeta* specimen from Flores Island, Indonesia, examined by Hennig (1941) was also collected from a mid elevation site (1200m ASL). Unfortunately, the latter was poorly preserved and could not be described, but based on Hennig's illustration, it likely constitutes a new species. Given that *Perochaeta* species are restricted to elevated sites, we predict that the number of species will rapidly grow as more mid and high elevation localities are sampled.

Adding two new species to *Perochaeta* is also of interest, because this (small) genus is very atypical for sepsids. Males of most sepsids have modified forelegs (e.g., cuticular tubercles and stout, enlarged spines; see Figs 15–16, 18–19, 21–22, 24–27) which are used to grab the base of female wings during mating (Pont and Meier 2002, Ingram et al. 2008, Puniamoorthy et al. 2008, 2009). However, *Perochaeta* has secondarily reduced foreleg armature, and at least *P. dikowi* has evolved a novel mounting behavior that does not involve the foreleg grasp (Ang et al. 2008). This has made *Perochaeta* a model for testing the correlation between the evolution of behavior and morphology (see Puniamoorthy et al. 2008, 2009).

Notes on *Sepsis*

Sepsis spura appears to be a relatively widespread species ranging between Indonesia and Vietnam, and it can be found across all elevations, ranging from highlands (Sa Pa Valley, Vietnam; 1250m ASL) through mid elevation areas (Kampung Jawa, Indonesia; 650m ASL) to sea level (Bandar Gadang Beach, Indonesia). Such widespread species of insects are relatively common in Southeast Asia and are increasingly attracting attention because they can give rise to new species (see Balke et al. 2009). At all localities the *S. spura* is found in low numbers on bovine dung while other *Sepsis* species can be very abundant. This, along with its morphological resemblance to *S. nitens*, may explain why *S. spura* is only described now. It is likely to belong to a clade of *Sepsis* species without wingspots (see Su et al. 2008).

Sepsis sepsi was first described from Sumbawa Is., Indonesia at 450m ASL (Ozerov 2003), but has subsequently been collected at low elevation sites in Sumatra as well as now at mid-elevation sites (800m ASL) in Ba Vi, Vietnam. This suggests that *Sepsis sepsi* is a relatively widespread species able to live in low to mid elevation habitats. We predict that it is also likely to be found in other areas between Indonesia and Vietnam. The record of the widely distributed *Sepsis monostigma* in Vietnam is not unexpected given that it falls within the recorded range from India to the far east of Russia.

Acknowledgements

The authors would like to thank Dr. Tran AD of Hanoi University of Science for the kind arrangement of the collection trip in North Vietnam, Dr. Iwasa M for his input on *S. spura*, Annie Ang for DNA sequence data on *P. cuirassa* and *P. lobo*, and Rachel Lin for translating Russian texts of the descriptions for *P. hennigi* and *S. sepsi*. This study was funded by the Singapore Ministry of Education grant R377-000-040-112.

References

- Ang Y, Puniamoorthy N, Meier R (2008) Secondarily reduced foreleg armature in *Perochaeta dikowi* sp.n. (Diptera : Cyclorrhapha : Sepsidae) due to a novel mounting technique. Systematic Entomology 33: 552–559.
- Balke M, Ribera I, Miller MA, Sagata K, Posman A, Vogler AP, Meier R (2009) New Guinea highland origin of a widespread arthropod supertramp. Proceedings of the Royal Society London 276: 2359–2367.
- Brunetti E (1910) New Oriental Sepsinae. Records of the Indian Museum 3: 343–372.
- Duda O (1926) Monographie der Sepsiden (Dipt.), II. Annalen des Naturhistorischen Museums in Wien 40: 1–110.

- Hennig W (1941) Dipteren von den kleinen Sunda-Inseln. Aus der Ausbeute der Sunda-Expedition Rensch. III. Piophilidae und Sepsidae. In Arbeiten über morphologische und taxonomische Entomologie aus Berlin-Dahlem 8: 145–149.
- Ingram KK, Laamanen T, Puniamoorthy N, Meier R (2008) Lack of morphological coevolution between male forelegs and female wings in *Themira* (Sepsidae: Diptera: Insecta). *Biological Journal of the Linnean Society* 93: 227–238.
- Iwasa M, Tewari RR (1994) Notes on the Sepsidae (Diptera) from India, with description of a new species. In: Shinonaga S et al. (Eds) Studies on the taxonomy, ecology and control of the medically important flies in India and Nepal. *Japanese Journal of Sanitary Zoology* 45(Suppl.): 23–29.
- Iwasa M (2001) Taxonomic and faunistic notes on the Sepsidae (Diptera) in Seram, Indonesia. *Entomological Science* 4: 533–538.
- Iwasa M, Thanh TH (2008) Six new species of the genus *Dicranosepsis* Duda (Diptera, Sepsidae) from Vietnam, with a revised key to the species. *Entomological Science* 11: 65–73.
- Laamanen TR, Petersen JFT, Meier R (2003) Kelp Flies and Species Concepts - The Case of *Coelopa frigida* and *C. nebularum*. *Journal of Zoological Systematics and Evolutionary Research* 41: 127–136.
- Lim GS, Balke M, Meier R (In press) Determining species boundaries in a world full of rarity: singletons and species delimitation methods. *Systematic Biology*.
- Meier R, Willmann R (2000) The Hennigian species concept. In Wheeler, QD, Meier, R (Eds) *Species Concepts and Phylogenetic Theory: a Debate*. Columbia University Press, New York, 30–43.
- Merz B, Haenni J-P (2000) Morphology and terminology of adult Diptera (excluding terminalia). In Papp L, Darvas B (Eds) *Contributions to a Manual of Palaearctic Diptera 1: General and Applied Dipterology*. Science Herald, Budapest, 21–52.
- Mishler B, Theriot E (2000) The phylogenetic species concept sensu Mishler and Theriot: monophyly, apomorphy, and phylogenetic species concepts. In Wheeler QD, Meier R (Eds) *Species Concepts and Phylogenetic Theory: A Debate*. Columbia University Press, New York, 44–54.
- Ozerov AL (1992) On the taxonomy of flies of the family Sepsidae (Diptera). *Byulleten' Moskovskogo obshchestva ispytateley prirody, Otd. Biol.* 97(4): 44–47 [In Russian].
- Ozerov AL (1993) A New Genus and Three New Species of Sepsidae (Diptera) from Vietnam. *Entomol. Rev.* 71(6): 123–127.
- Ozerov AL (2003) On three species of the genus *Sepsis* Fallén (Diptera, Sepsidae). *Zoologicheskii zhurnal.* 82(10): 1276–1280 [In Russian].
- Ozerov AL (2005) World catalogue of the family Sepsidae (Insecta: Diptera). *Zoologicheskie Issledovania* 8, 74 pp.
- Pont AC, Meier R (2002) *The Sepsidae (Diptera) of Europe*. Brill, 188 pp.
- Puniamoorthy N, Su KF-Y, Meier R (2008) Bending for love: losses and gains of sexual dimorphisms are strictly correlated with changes in the mounting position of sepsid flies (Sepsidae: Diptera). *BMC Evol Biol.* 8:155. doi: 10.1186/1471-2148-8-155.
- Puniamoorthy N, Ismail MR, Tan DSH, Meier R (2009) From kissing to belly stridulation: comparative analysis reveals surprising diversity, rapid evolution, and much homoplasy in

- the mating behaviour of 27 species of sepsid flies (Diptera: Sepsidae). *Journal of Evolutionary Biology* 22(11): 2146–56.
- Sinclair BJ (2000) Morphology and terminology of Diptera male genitalia. In Papp L, Darvas B (Eds) *Contributions to a Manual of Palaearctic Diptera 1: General and Applied Dipterology*. Science Herald, Budapest, 53–74.
- Su KF-Y, Kutty SN, Meier R (2008) Morphology versus Molecules: The phylogenetic relationships of Sepsidae (Diptera: Cyclorrhapha) based on morphology and DNA sequence data from ten genes. *Cladistics* 24: 902–916.
- Tan DSH, Ali F, Kutty SN, Meier R (2008) The need for specifying species concepts: how many species of silvered langurs (*Trachypithecus cristatus* group) should be recognized? *Molecular Phylogenetics and Evolution* 49: 688–689.
- Tan DSH, Ang Y, Lim GS, Ismail MR, Meier R (2010) From ‘cryptic species’ to integrative taxonomy: an iterative process involving DNA sequences, morphology, and behaviour leads to the resurrection of *Sepsis pyrrhosoma* (Sepsidae: Diptera). *Zoologica Scripta* 39: 51–61.
- Thomson CG (1869) 6. Diptera. Species nova descripsit. In: *Kongliga svenska fregatten Eugénies resa omkring Jorden*. Stockholm, 2(1): 443–614.
- Wheeler QD, Meier R (Eds) (2000) *Species Concepts and Phylogenetic Theory: a Debate*. Columbia University Press, New York, 230 pp.