



**Original Article**

**Prevalence of Sickle Cell Trait in the Southern Suburb of Beirut, Lebanon**

Abdel Badih El Ariss<sup>1</sup>, Mohamad Younes<sup>2</sup>, Jad Matar<sup>3</sup> and Zeina Berjaoui<sup>4</sup>

<sup>1</sup> Faculty of Medicine. Balamand University, Beirut, Lebanon

<sup>2</sup> Faculty of Sciences. Haigazian University, Beirut, Lebanon

<sup>3</sup> Faculty of Sciences. American University of Beirut, Beirut, Lebanon

<sup>4</sup> Faculty of Health Sciences – American University of Science and Technology, Beirut, Lebanon

**Competing interests:** The authors have declared that no competing interests exist.

**Abstract. Objective:** The objective of this study was to assess the prevalence, gender differences, and time trends of Sickle Cell Trait in the Southern Suburb of Beirut, Lebanon, as well as to highlight the importance of screening for Sickle Cell Trait carriers in this population. Another objective was to describe a new screening technique for Sickle Cell Trait carriers.

**Methods:** This was a retrospective cohort study carried out at a private laboratory in the Southern Suburb of Beirut, Lebanon between 2002 and 2014. The sickling test was carried out for each patient using two methods: the classical “sodium metabisulfite sickling test”, and the new “sickling test method” used in the private lab. As a confirmatory test, hemoglobin electrophoresis was run on a random sample of 223 cases which were found to be positive using the two sickling tests.

**Results:** A total of 899 cases were found to be positive for the sickle cell trait out of 184,105 subjects screened during the 12-year period, prevalence = 0.49% (95% CI: 0.46 – 0.52). Among the total sample, females were found to have higher prevalence, where no time trend over the studied period was noted. The haemoglobin electrophoresis method confirmed the results of this new sickling test technique among the random sample of the 223 cases.

**Conclusion:** We found that the prevalence of sickle cell trait is lower as compared to other Arab countries, higher in females, with no significant time trend. The sickle cell test was found to be an accurate, simple and cheap test that could be easily added as a requirement for the pre-marital testing to screen for Sickle Cell Trait carriers.

**Citation:** El Ariss A.B., Younes M., Matar J., Berjaoui Z. Prevalence of Sickle Cell Trait in the Southern Suburb of Beirut, Lebanon. *Mediterr J Hematol Infect Dis* 2016, 8(1): e2016015, DOI: <http://dx.doi.org/10.4084/MJHID.2016.015>

**Published:** February 20, 2016

**Received:** September 22, 2015

**Accepted:** January 11, 2016

This is an Open Access article distributed under the terms of the Creative Commons Attribution License (<http://creativecommons.org/licenses/by/2.0>), which permits unrestricted use, distribution, and reproduction in any medium, provided the original work is properly cited.

Correspondence to: Dr. Zeina Berjaoui, DP. Faculty of health sciences. American University of Science and Technology. Beirut – Lebanon. E-mail: [Berjaoui.lab@gmail.com](mailto:Berjaoui.lab@gmail.com)

**Introduction.** Sickle syndromes include several inherited diseases that cause red blood cells to sickle in vivo, where the most recognized ones are Sickle Cell Disease (SCD), Sickle Cell Trait (SCT), and Sickle Cell/Thalassemia (S/ $\beta$  thalassemia)<sup>1</sup> Phenotypically, only persons with double recessive genes of sickle cell homozygotes (SS) do manifest disease, while the heterozygotes (AS) are being referred to as Sickle Cell Trait carriers.<sup>2</sup> It is estimated that each year more than

330,000 children are born worldwide with haemoglobinopathies, 83% of which are sickle cell disorders.<sup>3</sup>

Sickle Cell Disease is a disorder of haemoglobin synthesis that results from the substitution of glutamic acid at the sixth position of its  $\beta$ -globin chain by valine (HbS).<sup>4</sup> It is also known as sickle-cell anemia (SCA) and is characterized by an abnormality in the oxygen-carrying haemoglobin molecule in red blood cells.<sup>5</sup> It is

one of the most common haemoglobinopathies in Africa, the Middle East and India. Sickle cell disease is now found throughout the world, and its incidence has increased in Europe and North America because of the high rate of migration from areas in which the disease is prevalent.<sup>3,6</sup> In 2006, the World Health Organization (WHO) recognized sickle cell disease as a global public health problem.<sup>7</sup> According to Diallo et al., Africa is the most highly affected continent with 200,000 newborn affected by sickle cell disease per year.<sup>2</sup> In the United States, sickle cell disease affects about 72,000 people.<sup>8</sup> Moreover, Piel et al. expected that the annual global number of newborns with sickle cell disease will increase from 305,800 patients in 2010 to 404,200 patients in 2050 (about one-third increase).<sup>9</sup> The clinical manifestations of the sickle cell disease are diverse where any organ system may be affected. These signs are commonly divided into vaso-occlusive (where the episodes of pain, acute chest syndrome, splenic infarction, stroke, and avascular necrosis of joints predominate) and hematologic (where severe anemia, leg ulcers, and pulmonary hypertension predominate).<sup>10,11</sup> Early diagnosis and treatment can ameliorate the course of these diseases and improve survival. More specifically, prophylactic penicillin, immunizations, comprehensive care, and parental education about serious sickle cell disease complications has been shown to significantly give a better survival rate and quality of life for sickle cell disease patients.<sup>12,13</sup>

Sickle Cell Trait is present in approximately 300 million people worldwide, with the highest prevalence of approximately 30% to 40% in sub-Saharan Africa.<sup>11</sup>

Despite the benign nature of the Sickle Cell Trait, several potentially serious complications have been described with it including, gross hematuria, increased urinary tract infection in women, complications of hyphema, splenic infarction with altitude hypoxia or exercise, and life-threatening complications of exercise.<sup>14</sup> Hematuria is the most common manifestation of sickle cell trait.<sup>15</sup> Spontaneous sickling can occur in the renal papilla (normally under low oxygen pressure) in patients with renal papillary necrosis; therefore, 5% of patients with sickle cell trait can suffer episodes of hematuria at some point during their lives.<sup>16,17</sup> Studies in America, England and Jamaica reported that the rates of urinary tract infection are higher for women with sickle cell trait in comparison to racially matched controls.<sup>14</sup> This finding is well established for asymptomatic bacteriuria of pregnancy, in which the rate is approximately doubled with sickle cell trait.<sup>18</sup> People with sickle cell trait are more susceptible to complications following treatment of hyphema. The slow flow of relatively hypoxic fluid in the chamber of the eye out of the filtration apparatus is a location in which both polymerization of hemoglobin S and obstruction of flow by rigid

erythrocytes is likely. All this can result in glaucoma and secondary hemorrhage.<sup>14</sup> Splenic Infarction from sickle cell trait is favoured by exercise at high altitude but has occurred with altitude exposure at rest or during exercise at sea level.<sup>11</sup> The spleen is susceptible to vaso-occlusion related to hemoglobin S polymerization and red cell deformation. When subjects with hemoglobin S are exposed acutely to high altitude hypoxia, the spleen is the organ most consistently injured by microvascular obstruction.<sup>19</sup> Moreover, there has been growing concern about the possible association of Sickle Cell Trait and exercise-related morbidity and mortality in healthy young college athletes due to the effects of extreme physical exertion, dehydration and relative hypoxia (typically at high altitudes).<sup>1</sup> The risks of microvascular complications in Sickle Cell Trait carriers in response to exercise are dependent on alterations in blood rheology and vascular adhesion processes. These abnormalities include higher red blood cell rigidity and higher blood viscosity in the sickle cell trait carriers compared with the non-carriers, particularly 24 and 48 hours after exercise.<sup>20</sup>

Pre-marital screening to identify carriers of genetic disorders, especially those with recessively inherited diseases, has been shown to decrease the incidence of inherited Sickle Cell Disease.<sup>21</sup> This approach is more needed for countries with high prevalence of carriers, such as the Mediterranean region. Various diagnostic tests are available to differentiate between blood samples from normal healthy individuals, Sickle Cell Trait carriers and Sickle Cell Disease patients. Examples of screening tests include sickling test, solubility test, and alkaline haemoglobin electrophoresis on agarose gel.<sup>22,23</sup> On the other hand, high specific diagnostic tests include isoelectric focusing, citrate agar electrophoresis, and high-performance liquid chromatography, as well as the capillary method.<sup>22,24</sup>

A study carried out by Khoriaty et al. screened Lebanese neonates for Sickle Cell Disease and other Hemoglobin variants in all public hospitals in Lebanon, between 2010 and 2013. Among newborns, 0.1% were found to have Sickle Cell Disease, and 2.1% were found to have an abnormal Hb variant with HbS being the most common (84.4% corresponding to 1.77% of the studied population) which were distributed in all the regions. The carrier rate of Hb variant varied amongst regions, between 5.7 and 50.2%, being the highest in Northern Lebanon, whereas it is 13.2% (0.27% of the studied population) in Beirut.<sup>25</sup>

This study was conducted to assess the prevalence of Sickle Cell Trait among a sample from a private laboratory (Modern Medical Center / Modern Laboratory) in the Southern Suburb of Beirut, as well as to assess any time trends over a 12-year period, and any differences in gender. Moreover, the importance of

screening for Sickle Cell Trait carriers in this population is also highlighted. Another objective was to describe a new “sickling test method” for the screening of Sickle Cell Trait carriers, as well as to assess the correlation of the results with them of the “sodium metabisulfite sickling test”, and to confirm findings with the hemoglobin electrophoresis technique (Sebia Capillars).

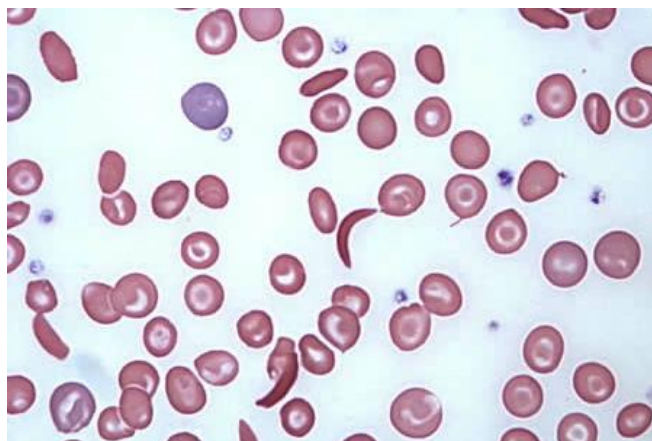
## Methods.

*Study design and setting:* This research was a retrospective cohort study using data from a private laboratory (Modern Medical Center / Modern Laboratory, established in 1963) in the Southern Suburb of Beirut, Lebanon from 2002 till 2014. Population served by this laboratory includes mainly subjects from a Southern suburb of Beirut, irrespective of their socio-economic status. All patients coming for a complete blood count with differential (CBCD) underwent a free-of-charge sickling test.

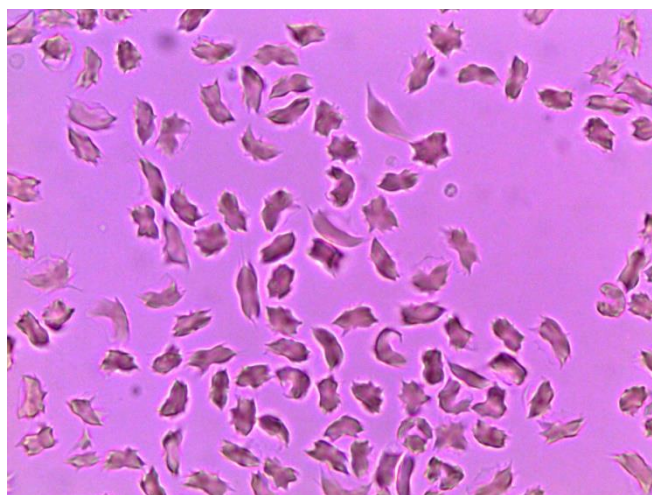
*Inclusion and exclusion criteria:* Eligible for this study were all subjects referred to our laboratory for CBCD testing, without any exclusion based on age, gender, socioeconomic status or MCV findings. The sample included in our analyses comprised all eligible subjects, where no sampling was applied. Moreover, repetitive results for same patients were excluded.

*Blood testing method:* Blood samples (3 ml) were drawn from patients using EDTA (Ethylenediaminetetraacetic acid) tubes. As a primary screening procedure, the sickling test was carried out for each patient using two methods. In the first method (the new “sickling test method”), one drop of blood was placed on a slide and a cover slide which was sealed using nitrocellulose dissolved in butyl acetate usually found in nail varnish. The slides were incubated at 37°C for 24 hours. As for the second method (“sodium metabisulfite sickling test”), one drop of 2% Sodium metabisulfite was added to a drop of blood between a slide and a cover slide, sealed using the same sealing method and incubated at 37°C for 10 minutes or at room temperature for one hour. For both sets, the slides were inspected under the microscope (Olympus, dry objective 40), and the red blood cells found to be sickling in shape were indicative of a positive sickling test (**Figure 1-2**). Patients found to be positive were notified of their condition and advised to confirm their results by haemoglobin electrophoresis.

As a confirmatory test, haemoglobin electrophoresis was run on a random sample of 223 subjects who were found to be positive using the sickling test. Another sample of whole blood was drawn from these patients in EDTA tube, and then the red cells were separated from plasma by centrifugation. The Capillars, an



**Figure 1.** Blood smear of a patient with Sickle Cell Disease.



**Figure 2.** Sickling test of a patient with Sickle Cell Trait.

automated capillary electrophoresis by Sebia (Sebia, Surrey, UK), was used in the separation of haemoglobins. The sample was placed in a precise position required by the machine, as well as a red blood cell (RBC) lysis solution at position 27 of the machine and control run simultaneously. Capillars uses buffer-filled, narrow bore capillaries and detects haemoglobin fractions using UV-visible at 200 nm. Separation occurs according to the electrolyte pH and electroosmotic flow. The test can detect abnormal levels of HbS, the form associated with Sickle Cell Trait and Sickle Cell Disease, as well as other abnormal hemoglobin-related blood disorders.

*Data Collection:* Data were collected by extracting the information from the electronic and paper files. For the analysis of the prevalence, information available were a date, age, gender, and MCV. On the other hand, for the confirmatory analysis, information collected included age, gender, and the hematologic parameters such as RBC, Hb (haemoglobin), Hct (hematocrit), MCV (mean corpuscular volume), MCH (mean cell hemoglobin), and MCHC (mean corpuscular hemoglobin concentration). Moreover, information about different types of haemoglobin: HbA1 (haemoglobin, alpha 1), HbA2 (haemoglobin, alpha 2),

HbF (fetal hemoglobin) and HbS (hemoglobin S) were included.

**Ethical Considerations:** Patients enrolled in our study provided oral consent for the tests to be performed, as well as to be included in the study. The sickling tests were carried out free of charge. Moreover, institutional review board (IRB) of the American University of Science and Technology (AUST) in Lebanon was obtained. Data collected were kept confidential at the principal investigator's office.

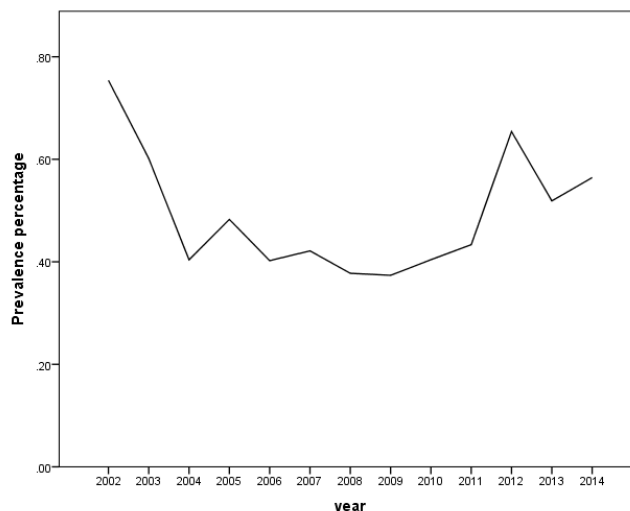
**Statistical analyses:** Data entered into a Microsoft Excel spreadsheet and then transferred into the Statistical Package for Social Sciences (SPSS) version 21, which was used for data cleaning, management and analyses. Descriptive analyses were carried out by presenting the number and percent for categorical variables, whereas mean and standard deviation were performed for continuous ones. The prevalence of the sickle cell trait was calculated along with the 95% confidence interval (95% CI). The difference in the prevalence of sickle cell trait, as well as the other hematological parameters between males and females, were assessed by using the students t-test. Statistical significance was identified at 0.05 level.

**Results.** During the 12-year period between January 2002 and December 2014, a total of 184,105 subjects were screened for sickle cell trait. Over this period, 899 patients were found to be positive for the sickle cell trait, which yielded an overall 12-year sickle cell prevalence of 0.49% (95% CI: 0.46 – 0.52). There was a decrease in prevalence between 2002 from 0.75% (95% CI: 0.61- 0.90) to 0.37% (95% CI: 0.28 - 0.47) in 2009 and then an increase was found from 0.40% (95% CI: 0.30 - 0.51) in 2010 to 0.56% (95% CI: 0.43 - 0.70) in 2014 (**Table 1** and **Figure 3**). Moreover, it was found that 325 males were positive for the sickle cell

**Table 1.** Distribution of Sickle Cell Trait carriers.

|                   |                         | Total number of sickle cell trait carriers | Base    | Prevalence of sickle cell trait carriers | 95% confidence interval |
|-------------------|-------------------------|--|---------|--|-------------------------|
| <b>Overall</b>    | <b>Overall 12 years</b> | 899  | 184,105 | 0.49%                                    | 0.46% - 0.52%           |
| <b>By years</b>   | <b>Year 2002</b>        | 108  | 14,320  | 0.75%                                    | 0.61% - 0.90%           |
|                   | <b>Year 2003</b>        | 87   | 14,460  | 0.60%                                    | 0.48% - 0.73%           |
|                   | <b>Year 2004</b>        | 60   | 14,855  | 0.40%                                    | 0.30% - 0.51%           |
|                   | <b>Year 2005</b>        | 70   | 14,500  | 0.48%                                    | 0.37% - 0.60%           |
|                   | <b>Year 2006</b>        | 54   | 13,426  | 0.40%                                    | 0.30% - 0.51%           |
|                   | <b>Year 2007</b>        | 65   | 15,425  | 0.42%                                    | 0.32% - 0.52%           |
|                   | <b>Year 2008</b>        | 55   | 14,565  | 0.38%                                    | 0.28% - 0.48%           |
|                   | <b>Year 2009</b>        | 58   | 15,526  | 0.37%                                    | 0.28% - 0.47%           |
|                   | <b>Year 2010</b>        | 61   | 15,096  | 0.40%                                    | 0.30% - 0.51%           |
|                   | <b>Year 2011</b>        | 62   | 14,304  | 0.43%                                    | 0.33% - 0.54%           |
|                   | <b>Year 2012</b>        | 90   | 13,760  | 0.65%                                    | 0.52% - 0.79%           |
|                   | <b>Year 2013</b>        | 65   | 12,526  | 0.52%                                    | 0.39% - 0.65%           |
| <b>Year 2014</b>  | 64                      | 11,342                                     | 0.56%   | 0.43% - 0.70%                            |                         |
| <b>By gender*</b> | <b>Male</b>             | 325  | 92,053  | 0.35%                                    | 0.32% - 0.39%           |
|                   | <b>Female</b>           | 574  | 92,053  | 0.62%                                    | 0.57% - 0.67%           |

\* The base was divided by 2 to get the estimate for both males and females and the numbers were rounded up.



**Figure 3.** Prevalence of Sickle Cell Trait carriers per year.

trait, out of 92,053 subjects yielding a prevalence of 0.35% (95% CI: 0.32 - 0.39), whereas, 574 out of 92,053 were females yielding a prevalence of 0.62% (95% CI: 0.57 - 0.67). **Table 2** presents the distribution of sickle cell trait by gender and year. Among males, there was a decrease in prevalence of sickle cell trait between 2002 (0.54%, 95% CI: 0.37 - 0.72) and 2009 (0.15%, 95% CI: 0.07 - 0.24). On the other hand, the sickle cell trait prevalence increased during the period between 2010 and 2014, where the highest prevalence was found to be in 2012 (0.55%, 95% CI: 0.38 - 0.72).. As for females, there was a decrease in prevalence of sickle cell trait from 0.96% in 2002 (95% CI: 0.73 - 1.12) to 0.46% in 2004 (95% CI: 0.30 - 0.61). We did not find any changes in the trends of sickle cell trait prevalence between the years 2005 and 2014. The highest prevalence during this period was found to be in 2012 (0.76%, 95% CI: 0.55 - 0.96), and the lowest was found to be in 2008 (0.45%, 95% CI: 0.30 - 0.61). Worth noting is the finding that the prevalence of sickle cell in each year was lower among males compared to that among females. In some years this

**Table 2:** Distribution of Sickle Cell Trait carriers by gender and year.

| Variables           | Male                                       |      |  |                         | Female                                     |      |  |                         | p value       |         |
|---------------------|--|------|--|-------------------------|--|------|--|-------------------------|---------------|---------|
|                     | Total number of sickle cell trait carriers | Base | Prevalence of sickle cell trait carriers | 95% confidence interval | Total number of sickle cell trait carriers | Base | Percentage of sickle cell trait carriers | 95% confidence interval |               |         |
| <b>Total sample</b> | <b>n=325</b>                               |      |  |                         | <b>n=574</b>                               |      |  |                         |               |         |
| <b>Year</b>         | 2002                                       | 39   | 7,160                                    | 0.54%                   | 0.37% - 0.72%                              | 69   | 7,160                                    | 0.96%                   | 0.73% - 1.12% | 0.004   |
|                     | 2003                                       | 32   | 7,230                                    | 0.44%                   | 0.29% - 0.60%                              | 55   | 7,230                                    | 0.76%                   | 0.56% - 0.96% | 0.01    |
|                     | 2004*                                      | 26   | 7,428                                    | 0.35%                   | 0.22% - 0.48%                              | 34   | 7,428                                    | 0.46%                   | 0.30% - 0.61% | 0.30    |
|                     | 2005                                       | 23   | 7,250                                    | 0.32%                   | 0.19% - 0.45%                              | 47   | 7,250                                    | 0.65%                   | 0.46% - 0.83% | 0.004   |
|                     | 2006                                       | 20   | 6,713                                    | 0.30%                   | 0.17% - 0.43%                              | 34   | 6,713                                    | 0.51%                   | 0.34% - 0.68% | 0.06    |
|                     | 2007*                                      | 20   | 7,713                                    | 0.26%                   | 0.15% - 0.37%                              | 45   | 7,713                                    | 0.58%                   | 0.41% - 0.75% | 0.002   |
|                     | 2008*                                      | 22   | 7,283                                    | 0.30%                   | 0.18% - 0.43%                              | 33   | 7,283                                    | 0.45%                   | 0.30% - 0.61% | 0.14    |
|                     | 2009                                       | 12   | 7,763                                    | 0.15%                   | 0.07% - 0.24%                              | 46   | 7,763                                    | 0.59%                   | 0.42% - 0.76% | <0.0001 |
|                     | 2010                                       | 24   | 7,548                                    | 0.32%                   | 0.19% - 0.45%                              | 37   | 7,548                                    | 0.49%                   | 0.33% - 0.65% | 0.09    |
|                     | 2011                                       | 23   | 7,152                                    | 0.32%                   | 0.19% - 0.45%                              | 39   | 7,152                                    | 0.55%                   | 0.38% - 0.72% | 0.04    |
|                     | 2012                                       | 38   | 6,880                                    | 0.55%                   | 0.38% - 0.72%                              | 52   | 6,880                                    | 0.76%                   | 0.55% - 0.96% | 0.14    |
|                     | 2013                                       | 22   | 6,263                                    | 0.35%                   | 0.21% - 0.50%                              | 43   | 6,263                                    | 0.69%                   | 0.48% - 0.89% | 0.009   |
|                     | 2014                                       | 24   | 5,671                                    | 0.42%                   | 0.25% - 0.59%                              | 40   | 5,671                                    | 0.71%                   | 0.49% - 0.92% | 0.04    |

\* The base was divided by 2 to get the estimate for both males and females and the numbers were rounded up.

difference was statistically significant: p-values of 0.004, 0.01, 0.004, 0.0002, <0.0001, 0.04, 0.009, and 0.04 for the years 2002, 2003, 2005, 2007, 2009, 2011, 2013, and 2014, respectively. These trends are presented in **figure 4**.

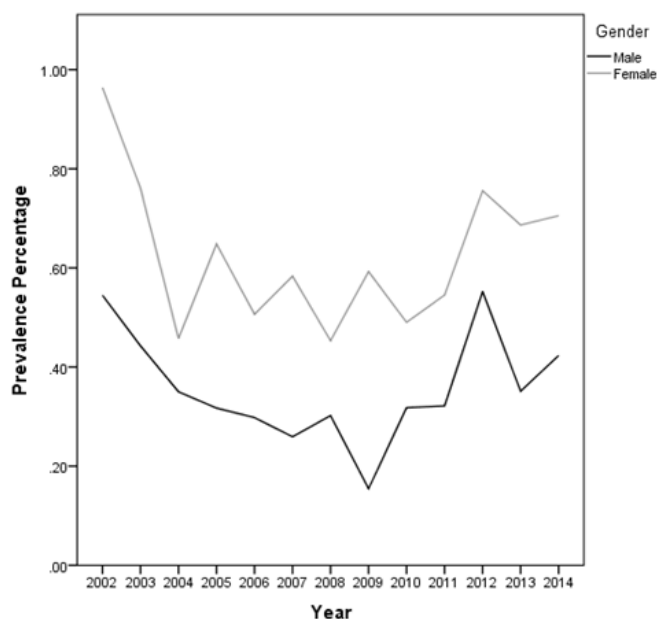
**Table 3** presents the average MCV by year and gender. The overall average MCV was found to be 84.3 (±7.6). Stratified by gender, the average MCV for males and females were found to be 84.7(±7.4) and 84.1 (±7.8), respectively, for which the difference was not statistically significant (p-value = 0.24). The average MCV for the different years ranged between 81.8 (±8.3) in 2006 and 86.9 (±9.2) in 2011. The differences in MCV between the genders in the years 2002 and 2004 were found to be statistically

significant with p-values of 0.01 and 0.02, respectively.

The demographic and hematological characteristics of the 223 cases of positive sickle cell trait which were confirmed by the Hb electrophoresis are summarized in **Table 4**. The average age of patients was found to be 24.9 years (±15.6) with 40.8% being males. The values of the laboratory results were as follows: RBC = 4.7 million/ul (±0.6), Hb = 12.9 g/dl (±7.6), Hct = 38.1% (±5.1), MCV = 80.6 fL (±9.1), MCH = 26.3 pg (±3.1), MCHC = 32.5 g/dl (±1.1), HbA1 = 57.3% (±7.6), HbA2 = 2.8% (±0.5), HbF = 0.6% (±1.8), and HbS = 38.8% (±5.3).

Finally, **Table 5** presents the differences in age and the different hematological parameters between males and females, for the 223 cases with positive HbS screening. Females were older than males with the average age being 26.9 years (±14.3) and 22.1 years (±17.0) for females and males, respectively, p-value = 0.03. A statistically significant difference between males and females was found in the RBC, Hct, and HbA2, the males having highest levels. The p-values were <0.0001 for each of the parameters.

**Discussion.** In this retrospective cohort study, that was carried out in a private laboratory in the Sowthern Suburb of Beirut between 2002 and 2014, we assessed the prevalence of Sickle Cell Trait, and time trends over a 12-year period, and any differences in prevalence between the two genders. Moreover, we described a new technique for screening of sickle cell trait carriers, assessing the correlation of the results with those of the known sickling test, and confirmed the findings with the haemoglobin electrophoresis technique (Capillarys). We found the prevalence of Sickle Cell Trait to be 0.49% (95% CI: 0.46-0.52). No



**Figure 4.** Distribution of Sickle Cell Trait carriers by sex and year.

**Table 3.** Average of MCV per year and gender.

|                  | MCV<br>(mean ±sd) | Males MCV<br>(mean ± sd) | Females MCV<br>(mean ± sd) | P value |
|------------------|-------------------|--------------------------|----------------------------|---------|
| <b>All years</b> | 84.3 (±7.6)       | 84.7(±7.4)               | 84.1 (±7.8)                | 0.24    |
| <b>2002</b>      | 82.6 (±8.3)       | 85.4 (±8.0)              | 81.1 (±8.1)                | 0.01    |
| <b>2003</b>      | 81.9 (±6.6)       | 81.2 (±8.4)              | 82.3 (±5.4)                | 0.45    |
| <b>2004</b>      | 83.5 (±8.0)       | 86.3 (±8.5)              | 81.4 (±7.0)                | 0.02    |
| <b>2005</b>      | 82.9 (±7.3)       | 83.5 (±9.2)              | 82.7 (±6.3)                | 0.69    |
| <b>2006</b>      | 81.8 (±8.3)       | 83.6 (±6.4)              | 80.7 (±9.1)                | 0.22    |
| <b>2007</b>      | 83.7 (±7.2)       | 83.7 (±5.6)              | 83.7 (±7.9)                | 0.99    |
| <b>2008</b>      | 85.3 (±5.7)       | 86.3 (±6.6)              | 84.6 (±5.1)                | 0.28    |
| <b>2009</b>      | 85.7 (±7.4)       | 86.8 (±4.4)              | 85.4 (±8.0)                | 0.56    |
| <b>2010</b>      | 84.7 (±7.8)       | 83.6 (±7.9)              | 85.4 (±7.8)                | 0.39    |
| <b>2011</b>      | 86.9 (±9.2)       | 84.7 (±7.9)              | 88.3 (±9.7)                | 0.14    |
| <b>2012</b>      | 86.2 (±6.5)       | 86.1 (±5.9)              | 86.3 (±7.0)                | 0.84    |
| <b>2013</b>      | 85.2 (±8.2)       | 84.2 (±6.0)              | 85.7 (±9.1)                | 0.50    |
| <b>2014</b>      | 86.9 (±6.1)       | 86.7 (±7.5)              | 87.0 (±5.2)                | 0.87    |

**Table 4.** Demographic and hematological parameters for 223 cases with positive HbS screening.

| Variables   |                |                           |
|---|----------------|---------------------------|
| <b>Total sample</b>                               |                | <b>n=223</b>              |
| <b>Gender</b>                                     | Male<br>Female | 91 (40.8%)<br>132 (59.2%) |
| <b>Age (years)</b>                                | Mean (±sd)     | 24.9 (±15.6)              |
| <b>RBC (million/ul)</b>                           | Mean (±sd)     | 4.7 (±0.6)                |
| <b>Hb (g/dl)</b>                                  | Mean (±sd)     | 12.9 (±7.6)               |
| <b>Hct (%)</b>                                    | Mean (±sd)     | 38.1 (±5.1)               |
| <b>MCV (fL)</b>                                   | Mean (±sd)     | 80.6 (±9.1)               |
| <b>MCH (pg)</b>                                   | Mean (±sd)     | 26.3 (±3.1)               |
| <b>MCHC (g/dl)</b>                                | Mean (±sd)     | 32.5 (±1.1)               |
| <b>HbA1 (%)</b>                                   | Mean (±sd)     | 57.3 (±7.6)               |
| <b>HbA2 (%)</b>                                   | Mean (±sd)     | 2.8 (±0.5)                |
| <b>HbF (%)</b>                                    | Mean (±sd)     | 0.6 (±1.8)                |
| <b>HbS (%) by Hb electrophoresis on capillars</b> | Mean (±sd)     | 38.8 (±5.3)               |

**Table 5.** Demographic and hematological parameters for 223 cases with positive HbS screening, stratified by gender.

| Variables   |            | Male<br>n=91 | Female<br>n=132 | p value |
|---|------------|--------------|-----------------|---------|
| <b>Total sample</b>                               |            |              |                 |         |
| <b>Age (years)</b>                                | Mean (±sd) | 22.1 (17.0)  | 26.9 (14.3)     | 0.03    |
| <b>RBC (million/ul)</b>                           | Mean (±sd) | 5.0 (±0.6)   | 4.6 (±0.5)      | <0.0001 |
| <b>Hb (g/dl)</b>                                  | Mean (±sd) | 13.1 (±2.0)  | 12.7 (±9.7)     | 0.75    |
| <b>Hct (%)</b>                                    | Mean (±sd) | 40.2 (±5.7)  | 36.6 (±4.0)     | <0.0001 |
| <b>MCV (fL)</b>                                   | Mean (±sd) | 81.1 (±9.1)  | 80.2 (±9.0)     | 0.45    |
| <b>MCH (pg)</b>                                   | Mean (±sd) | 26.5 (±3.5)  | 26.2 (±2.8)     | 0.42    |
| <b>MCHC (g/dl)</b>                                | Mean (±sd) | 32.6 (±1.2)  | 32.5 (±1.0)     | 0.34    |
| <b>HbA1 (%)</b>                                   | Mean (±sd) | 56.9 (±8.1)  | 57.6 (±7.2)     | 0.50    |
| <b>HbA2 (%)</b>                                   | Mean (±sd) | 2.9 (±0.5)   | 2.7 (±0.5)      | <0.0001 |
| <b>HbF (%)</b>                                    | Mean (±sd) | 0.5 (±1.5)   | 0.6 (±2.1)      | 0.72    |
| <b>HbS (%) by Hb electrophoresis on capillars</b> | Mean (±sd) | 39.2 (±6.8)  | 38.6 (±3.9)     | 0.44    |

major differences in trends were found over the 12-year period. We also found that the prevalence of Sick Cell Trait was higher in females as compared to males, consistently over the years. The average MCV value among carriers of the sickle cell haemoglobin. Were not different from normal controls. Therefore, the sickling test was found to be a good diagnostic test for Sick Cell Trait. The prevalence of Sick Cell Trait in our study was found to be 0.49% (95% CI: 0.46-0.52). Our results were higher than that reported in Khoriaty

et al. study in Beirut (0.27% of all Hb variants) but lower than that in all regions of Lebanon (2.1% for all Hb variants and 1.77% for HbS). This difference could be due to the change in the demographics of the Lebanese population, mainly due to emigration and immigration. Another factor that could have affected our results could be due to the change in the ethnic background, as reported by Khoriaty et al.<sup>25</sup> Also our results were lower than some of the reported prevalence of Sick Cell Trait internationally. In a

study conducted by Ojudu et al., it was reported that in 44 states of the United States for which data were available, of all infants screened for the Sick Cell Trait in 2010, 1.5% tested positive. These states represent approximately 88% of the U.S. population.<sup>26</sup> Moreover, a systematic review carried out by Lervolino et al. reported a prevalence ranging from 1.1 % to 9.8% for the Sick Cell Trait in different Brazilian regions,<sup>27</sup> and Ballardini et al. reported a 0.7% prevalence of Sick Cell Trait in a single center in Italy.<sup>28</sup> On the other hand, Guler et al. assessed the prevalence of sickle cell trait in Konya, the urban area of Turkey, in a study carried out in 2007, where they reported a prevalence of 0.05%, which is lower than that reported in our study.<sup>29</sup> Compared to other Arab countries, Jastaniah et al. reported in a survey carried out in 2011 that the prevalence of sickle-cell trait in Saudi Arabia varies significantly in different parts of the country and ranges from 2% to 27%.<sup>30</sup> This rate is higher than that shown in our study. Similarly, some surveys performed in Middle Eastern countries show that our carrier rate is lower than that reported in many other Arab countries like Bahrain (11.2–16.4%),<sup>31</sup> Iraq (6.5%),<sup>32</sup> Jordan (4% among females and 6% among males),<sup>33</sup> Libya (4.5%),<sup>34</sup> Tunisia (1.9%),<sup>35</sup> UAE (1.1%)<sup>36</sup> and Yemen (2.2%).<sup>37</sup> This difference could be explained in part by the lower rate of consanguineous marriages among the Lebanese population compared to other Arab countries.

The results of the present study showed some gender differences, where the prevalence of Sick Cell Trait in females (0.62%, 95% CI: 0.57 - 0.67) was higher than that of males (0.35%, 95% CI: 0.32 - 0.39), consistently over the years. Similarly, significant gender differences have been also reported in adults with Sick Cell Trait carriers. For instance, In a study carried out by Kamble et al. in India, it was reported that male: female ratio was 1.71:1 in HbAS cases.<sup>38</sup>

We did not find any significant differences in the trends of the Sick Cell Trait over the 12-year period. No studies have been found in the literature reporting on the trends of the Sick Cell Trait prevalence over time. Nevertheless, our findings indicate a relatively stable prevalence of Sick Cell Trait over time probably because our studied subjects were born in Lebanon and of Lebanese ancestry. Accordingly, no crucial demographic changes or marital habits (consanguineous) were observed in the past 12 years.

In our study, the overall average MCV was found to be 84.3 fl ( $\pm$ 7.6). Similarly, a comparable standard

MCV value has been reported among sickle cell trait carriers in France by Tripette et al. in 2009.<sup>39</sup>

On the other hand, in a study done in India, Dangi, et al. in 2010 reported an MCV value of 73.4 fl among the sickle cell trait carriers, which was lower than that reported in our study.<sup>40</sup> However, this study was performed in an anemic population, and most of these subjects were affected by sickle anemia with beta thalassaemia trait,<sup>40</sup> and also the iron deficiency cannot be excluded in this setting of patients. We found that the MCV level of the 223 cases of positive sickle cell trait, which were confirmed by the Hb electrophoresis, to be 80.6 ( $\pm$ 9.1). MCV levels among the whole sample, as well as the 223 cases, that were tested carrying the Sick Cell Trait, were within the normal range. Thus, MCV is not useful for screening sickle cell trait, and the microcytosis does not exclude the presence of Sick Cell Trait as reported by Dangi, [40] and an accurate screening test, like the sickling test, should also be made in patients with microcytosis (microdrepanocytosis according to Silvestroni).<sup>41</sup> Of course, the results should be confirmed by Hb electrophoresis (100% accuracy).

The present study had several limitations. First, it was an observational study without a control group. Another limitation is that the sample was collected from a single center that might not be representative of the whole Lebanese population. As such, the results of the study should be interpreted with these limitations in mind. On the other hand, the study had several strengths, such as the large sample size, the extended period, the prospective data collection, as well as being among the few studies carried out in Lebanon and the region assessing the prevalence of Sick Cell Trait.

**Conclusion.** In this study, we found that the prevalence of Sick Cell Trait is lower as compared to other Arab countries, higher in females, and with no significant trend over the 12-year period. Moreover, we showed that the MCV, though was not a screening test for Sick Cell Trait carriers, was useful. In fact, subjects with microcytosis should not be excluded from the selection and could have a contemporaneously thalassaemic trait, or sideropenia. On the other hand, the sickle cell test was found to be an accurate, simple and cheap test (It costs approximately two US dollars for both sickling tests) which could be easily added as a requirement for the pre-marital testing to screen for Sick Cell Trait carriers.

## References:

- Mitchell, B.L., Sick cell trait and sudden death--bringing it home. *J Natl Med Assoc*, 2007. 99(3): p. 300-5. PMID:17393956 PMCID:PMC2569637
- Diallo, D. and G. Tcherna, Sick cell disease in Africa. *Curr Opin Hematol*, 2002. 9(2): p. 111-6. <http://dx.doi.org/10.1097/00062752-200203000-00005>
- Modell, B. and M. Darlison, Global epidemiology of haemoglobin disorders and derived service indicators. *Bull World Health Organ*, 2008. 86(6): p. 480-7. <http://dx.doi.org/10.2471/BLT.06.036673> PMID:18568278 PMCID:PMC2647473
- Okwi, A.L., W. Byarugaba, C.M. Ndugwa, et al., An up-date on

- the prevalence of sickle cell trait in Eastern and Western Uganda. *BMC Blood Disord*, 2010. 10: p. 5. <http://dx.doi.org/10.1186/1471-2326-10-5> PMID:20569434 PMCid:PMC2905339
5. Bowers, A.S., D.J. Pepple, and H.L. Reid. Oxygen delivery index in subjects with normal haemoglobin (HbAA), sickle cell trait (HbAS) and homozygous sickle cell disease (HbSS). *Clin Hemorheol Microcirc*, 2008. 40(4): p. 303-9. PMID:19126993
  6. Stuart, M.J. and R.L. Nagel. Sickle-cell disease. *Lancet*, 2004. 364(9442): p. 1343-60. [http://dx.doi.org/10.1016/S0140-6736\(04\)17192-4](http://dx.doi.org/10.1016/S0140-6736(04)17192-4)
  7. World Health Organization. Fifty-ninth World Health Assembly: resolutions and decisions, annexes. [http://apps.who.int/gb/ebwha/pdf\\_files/WHA59-REC1/e/WHA59\\_2006\\_REC1-en.pdf](http://apps.who.int/gb/ebwha/pdf_files/WHA59-REC1/e/WHA59_2006_REC1-en.pdf)
  8. Creary, M., D. Williamson, and R. Kulkarni. Sickle cell disease: current activities, public health implications, and future directions. *J Womens Health (Larchmt)*, 2007. 16(5): p. 575-82. <http://dx.doi.org/10.1089/jwh.2007.CDC4> PMID:17627395
  9. Piel, F.B., S.I. Hay, S. Gupta, et al. Global burden of sickle cell anaemia in children under five, 2010-2050: modelling based on demographics, excess mortality, and interventions. *PLoS Med*, 2013. 10(7): p. e1001484.
  10. Ansong, D., A.O. Akoto, D. Ocloo, et al. Sickle cell disease: management options and challenges in developing countries. *Mediterr J Hematol Infect Dis*, 2013. 5(1): p. e2013062. <http://dx.doi.org/10.4084/mjihid.2013.062> PMID:24363877 PMCid:PMC3867228
  11. Kato, G.J., M.T. Gladwin, and M.H. Steinberg. Deconstructing sickle cell disease: reappraisal of the role of hemolysis in the development of clinical subphenotypes. *Blood Rev*, 2007. 21(1): p. 37-47. <http://dx.doi.org/10.1016/j.blre.2006.07.001> PMID:17084951 PMCid:PMC2048670
  12. Tsaras, G., A. Owusu-Ansah, F.O. Boateng, et al. Complications associated with sickle cell trait: a brief narrative review. *Am J Med*, 2009. 122(6): p. 507-12. <http://dx.doi.org/10.1016/j.amjmed.2008.12.020> PMID:19393983
  13. Ndefo, U.A., A.E. Maxwell, H. Nguyen, et al. Pharmacological management of sickle cell disease. *P T*, 2008. 33(4): p. 238-43.
  14. Eichner, E.R., Sickle cell trait. *J Sport Rehabil*, 2007. 16(3): p. 197-203. PMID:17923725
  15. Ahmed, S.G. and U.A. Ibrahim. Haemoglobin-S in sickle cell trait with papillary necrosis. *Br J Haematol*, 2006. 135(3): p. 415-6. <http://dx.doi.org/10.1111/j.1365-2141.2006.06318.x> PMID:16984389
  16. Lopez Revuelta, K. and M.P. Ricard Andres. Kidney abnormalities in sickle cell disease. *Nefrologia*, 2011. 31(5): p. 591-601. PMID:21959727
  17. Li, E.J. and V.G. Carroll. Sickle cell trait and renal papillary necrosis. *Clin Pediatr (Phila)*, 2014. 53(10): p. 1013-5. <http://dx.doi.org/10.1177/0009922814533418> PMID:24807983
  18. Bencaiova, G., A. Krafft, and C. Breyman. Sickle cell trait and urinary tract infection in pregnancy. *Int J Gynaecol Obstet*, 2006. 92(2): p. 128-9. <http://dx.doi.org/10.1016/j.ijgo.2005.10.009> PMID:16343499
  19. Goodman, J., K. Hassell, D. Irwin, et al. The splenic syndrome in individuals with sickle cell trait. *High Alt Med Biol*, 2014. 15(4): p. 468-71. <http://dx.doi.org/10.1089/ham.2014.1034> PMID:25361178 PMCid:PMC4273194
  20. Connes, P., O. Hue, J. Tripette, et al. Blood rheology abnormalities and vascular cell adhesion mechanisms in sickle cell trait carriers during exercise. *Clin Hemorheol Microcirc*, 2008. 39(1-4): p. 179-84. PMID:18503123
  21. Humphreys, J.V., The management of sickle cell disease in a primary care setting. *J Family Med Prim Care*, 2012. 1(1): p. 56-8. <http://dx.doi.org/10.4103/2249-4863.94454> PMID:24479003 PMCid:PMC3893939
  22. Kotila, T.R., Guidelines for the diagnosis of the haemoglobinopathies in Nigeria. *Ann Ib Postgrad Med*, 2010. 8(1): p. 25-9. PMID:25161471 PMCid:PMC4138768
  23. Y. Daniel, Practical Management of Haemoglobinopathies. Haemoglobinopathy diagnostic tests: blood counts, sickle solubility test, haemoglobin electrophoresis and high-performance liquid chromatography 2004: Blackwell Publishing.
  24. Johns Hopkins Medicine. Sickle Cell Disease. 2014; Available from: [http://m.hopkinsmedicine.org/healthlibrary/conditions/hematology\\_and\\_blood\\_disorders/sickle\\_cell\\_disease\\_85%2cP00101/](http://m.hopkinsmedicine.org/healthlibrary/conditions/hematology_and_blood_disorders/sickle_cell_disease_85%2cP00101/)
  25. Khoriaty, E., R. Halaby, M. Berro, et al., Incidence of sickle cell disease and other hemoglobin variants in 10,095 lebanese neonates. *PLoS One*, 2014. 9(9): p. e105109. <http://dx.doi.org/10.1371/journal.pone.0105109> PMID:25180595 PMCid:PMC4152148
  26. Ojodu, J., M.M. Hulihan, S.N. Pope, et al., Incidence of sickle cell trait--United States, 2010. *MMWR Morb Mortal Wkly Rep*, 2014. 63(49): p. 1155-8. PMID:25503918
  27. Lervolino, L.G., P.E. Baldin, S.M. Picado, et al., Prevalence of sickle cell disease and sickle cell trait in national neonatal screening studies. *Rev Bras Hematol Hemoter*, 2011. 33(1): p. 49-54. <http://dx.doi.org/10.5581/1516-8484.20110015> PMID:23284244 PMCid:PMC3521436
  28. Ballardini, E., A. Tarocco, M. Marsella, et al., Universal neonatal screening for sickle cell disease and other haemoglobinopathies in Ferrara, Italy. *Blood Transfus*, 2013. 11(2): p. 245-9. PMID:23058858 PMCid:PMC3626476
  29. Guler, E., U. Caliskan, C. UcarAlbayrak, et al., Prevalence of beta-thalassemia and sickle cell anemia trait in premarital screening in Konya urban area, Turkey. *J Pediatr Hematol Oncol*, 2007. 29(11): p. 783-5. <http://dx.doi.org/10.1097/MPH.0b013e318159a570> PMID:17984699
  30. Jastaniah, W., Epidemiology of sickle cell disease in Saudi Arabia. *Ann Saudi Med*, 2011. 31(3): p. 289-93. <http://dx.doi.org/10.4103/0256-4947.81540> PMID:21623060 PMCid:PMC3119971
  31. FJ, A., Prevalence of hemoglobinopathies among candidates attending premarital counseling in Bahrain. *J of Bahrain Med Soc*, 2008. 20: 145-149.
  32. Hassan, M.K., J.Y. Taha, L.M. Al-Naama, et al., Frequency of haemoglobinopathies and glucose-6-phosphate dehydrogenase deficiency in Basra. *East Mediterr Health J*, 2003. 9(1-2): p. 45-54. PMID:15562732
  33. Talafih, K., A.A. Hunaiti, N. Gharaibeh, et al., The prevalence of hemoglobin S and glucose-6-phosphate dehydrogenase deficiency in Jordanian newborn. *J Obstet Gynaecol Res*, 1996. 22(5): p. 417-20. <http://dx.doi.org/10.1111/j.1447-0756.1996.tb01050.x> PMID:8987321
  34. Jain, R.C., Sickle cell and thalassaemic genes in Libya. *Trans R Soc Trop Med Hyg*, 1985. 79(1): p. 132-3. [http://dx.doi.org/10.1016/0035-9203\(85\)90257-3](http://dx.doi.org/10.1016/0035-9203(85)90257-3)
  35. Fattoum, S., [Hemoglobinopathies in Tunisia. An updated review of the epidemiologic and molecular data]. *Tunis Med*, 2006. 84(11): p. 687-96. PMID:17294892
  36. Al Hosani, H., M. Salah, H.M. Osman, et al., Incidence of haemoglobinopathies detected through neonatal screening in the United Arab Emirates. *East Mediterr Health J*, 2005. 11(3): p. 300-7. PMID:16602448
  37. Al-Nood, H., S. Al-Ismael, L. King, et al., Prevalence of the sickle cell gene in Yemen: a pilot study. *Hemoglobin*, 2004. 28(4): p. 305-15. <http://dx.doi.org/10.1081/HEM-200037708> PMID:15658186
  38. Kamble, M. and P. Chatruvedi, Epidemiology of sickle cell disease in a rural hospital of central India. *Indian Pediatr*, 2000. 37(4): p. 391-6. PMID:10781232
  39. Tripette, J., T. Alexy, M.D. Hardy-Dessources, et al., Red blood cell aggregation, aggregate strength and oxygen transport potential of blood are abnormal in both homozygous sickle cell anemia and sickle-hemoglobin C disease. *Haematologica*, 2009. 94(8): p. 1060-5. <http://dx.doi.org/10.3324/haematol.2008.005371> PMID:19644138 PMCid:PMC2719028
  40. Dangi, C.B., M. Sajid, G.K. Sawke, et al., Sickle cell hemoglobinopathies in district Bhopal. *Indian J Hum Genet*, 2010. 16(2): p. 100-2. <http://dx.doi.org/10.4103/0971-6866.69373> PMID:21031060 PMCid:PMC2955948
  41. Silvestroni E, Bianco I. New data on microdrepanocytic disease. *Blood*. 1955. Jun;10(6):623-32. PubMed PMID: 14378282.