

# Incidence of utilization- and symptom-defined COPD exacerbations in hospital- and population-recruited patients

Marta Erdal<sup>1,2</sup>  
Ane Johannessen<sup>3</sup>  
Tomas Mikal Eagan<sup>1,2</sup>  
Per Bakke<sup>2</sup>  
Amund Gulsvik<sup>2</sup>  
Rune Grønseth<sup>1,2</sup>

<sup>1</sup>Department of Thoracic Medicine, Haukeland University Hospital, <sup>2</sup>Department of Clinical Science, University of Bergen, <sup>3</sup>Department of Global Public Health and Primary Care, University of Bergen, Bergen, Norway

**Objectives:** The objectives of this study were to estimate the impact of recruitment source and outcome definition on the incidence of acute exacerbations of COPD (AECOPD) and explore possible predictors of AECOPD.

**Patients and methods:** During a 1-year follow-up, we performed a baseline visit and four telephone interviews of 81 COPD patients and 132 controls recruited from a population-based survey and 205 hospital-recruited COPD patients. Both a definition based on health care utilization and a symptom-based definition of AECOPD were applied. For multivariate analyses, we chose a negative binomial regression model.

**Results:** COPD patients from the population- and hospital-based samples experienced on average 0.4 utilization-defined and 2.9 symptom-defined versus 1.0 and 5.9 annual exacerbations, respectively. The incidence rate ratios for utilization-defined AECOPD were 2.45 (95% CI 1.22–4.95), 3.43 (95% CI 1.59–7.38), and 5.67 (95% CI 2.58–12.48) with Global Initiative on Obstructive Lung Disease spirometric stages II, III, and IV, respectively. The corresponding incidence rate ratios for the symptom-based definition were 3.08 (95% CI 1.96–4.84), 3.45 (95% CI 1.92–6.18), and 4.00 (95% CI 2.09–7.66). Maintenance therapy (regular long-acting muscarinic antagonists, long-acting beta-2 agonists, inhaled corticosteroids, or theophylline) also increased the risk of AECOPD with both exacerbation definitions (incidence rate ratios 1.65 and 1.73, respectively). The risk of AECOPD was 59%–78% higher in the hospital sample than in the population sample.

**Conclusion:** If externally valid conclusions are to be made regarding incidence and predictors of AECOPD, studies should be based on general population samples or adjustments should be made on account of a likely higher incidence in other samples. Likewise, the effect of different AECOPD definitions should be taken into consideration.

**Keywords:** COPD, exacerbations, general population, predictors

## Introduction

Acute exacerbations of COPD (AECOPD) are associated with mortality and poorer quality of life, leading to higher consumption of health resources, and a more rapid decline in lung function compared to COPD patients without frequent exacerbations.<sup>1–3</sup> AECOPD pose a great burden to both patients and society.<sup>4</sup>

There is scarce knowledge on the incidence and predictors of COPD exacerbations in COPD patients from the general population. Estimates from previous studies have shown an AECOPD rate per person per year from 0.65 to 1.40.<sup>5–7</sup> These estimates vary by exacerbation definitions. A study comparing health care utilization and symptom-defined AECOPD observed higher incidence using the symptom-based definition.<sup>8</sup> The symptoms defining AECOPD are common, and even healthy individuals

Correspondence: Marta Erdal  
Department of Clinical Science,  
University of Bergen, Postboks 7804,  
N-5020, Bergen, Norway  
Tel +47 41 12 6320  
Email [marta.erdal@uib.no](mailto:marta.erdal@uib.no)

experience them at times.<sup>5,9</sup> Hence, if the symptom-based definition is to be used, inclusion of a control group is necessary for adjustment of the baseline burden of these symptoms in the healthy population.

Most previous studies are done on selected populations without a plausible control group.<sup>1,3–6,8,10–13</sup> Nevertheless, studies have indicated that exacerbation risk increases with higher age,<sup>6,7,10–13</sup> a history of previous exacerbations,<sup>5–7,10,13,14</sup> increasing airflow obstruction,<sup>5,6,10–16</sup> inflammatory biomarkers,<sup>13,17–20</sup> gastroesophageal reflux,<sup>16,21,22</sup> depression,<sup>23,24</sup> reduced quality of life,<sup>5,8,13</sup> low body mass index (BMI), or weight loss,<sup>6,8,25</sup> in addition to chronic respiratory symptoms.<sup>7,11,15,26</sup>

Only two previous studies have genuine population-based study samples. The PLATINO study used a symptom-based definition of AECOPD in a general population,<sup>15</sup> but it was retrospective, did not define a control group, and did not report utilization-based exacerbations. Based on the COPDGene sample, Bowler et al<sup>5</sup> reported utilization-defined exacerbations gathered by six-monthly telephone interviews, but they did not include a control group without airflow obstruction. Thus, to our knowledge, there is no study where two exacerbation definitions were applied to the same study population and where a control group was included.

Important treatment-related decisions are currently made based on studies using different definitions of AECOPD and based on samples that are not population based;<sup>3,6,14</sup> thus, the effect of these choices needs to be estimated and the impact on predictors of exacerbations needs to be examined. The aims of this study were to estimate the incidence of AECOPD in the general population with two different exacerbation definitions, compare the results to a hospital-based COPD study sample, and explore predictors of AECOPD in both COPD study samples. We hypothesized that the population sample exacerbated less often than the hospital sample and that the symptom-based exacerbation definition resulted in a higher exacerbation rate compared to the health care utilization-based definition.

## Methods

Our data were from the EconCOPD study, a 1-year prospective observational study conducted between March 2005 and August 2006 at Haukeland University Hospital, Bergen, Norway. The study was approved by the Regional Committee for Medical and Health Research Ethics in Western Norway (REK Vest case number 252.04), and all participants provided written informed consent. Details on sampling procedures and data collection have previously been published.<sup>27</sup>

## Study population and design

EconCOPD recruited three groups of participants who went through the same study during the same time frame: COPD patients from Haukeland University Hospital's COPD register and COPD cases and control subjects from a general population cohort. The population-based cases and controls were recruited from a follow-up examination of the Hordaland County Respiratory Health Survey in 2003–2004, a random and representative sample of the population in Hordaland County in 1985.<sup>28</sup> COPD patients from the general population sample who had received treatment at the University Hospital were only registered as participants in the population-based sample.

Participants were all current or former smokers of  $\geq 2.5$  pack-years and were at least 40 years old. The choice of using 2.5 pack-years as the lower limit for smoking exposure was made to exclude nontobacco-associated COPD cases.<sup>29</sup> COPD was defined as a post-bronchodilator ratio of the forced expiratory volume in 1 second ( $FEV_1$ ) to the forced vital capacity  $< 0.70$  and  $FEV_1 < 80\%$  predicted according to age, sex, and height.<sup>30</sup> Postbronchodilator spirometry was performed according to American Thoracic Society standards.<sup>31</sup> The control subjects had an  $FEV_1$ /forced vital capacity ratio  $> 0.70$  and  $FEV_1 > 80\%$  predicted. The latter group was included to be able to adjust for a baseline risk of having exacerbation-like symptoms or events in a general population without respiratory disease.

All included participants were interviewed at baseline concerning smoking habits, education and employment status, and comorbidities. They were all clinically assessed by the project physician (RG). At 12 weeks, 24 weeks, 36 weeks, and 52 weeks, a follow-up interview was conducted by telephone, gathering information on productivity losses, health care utilization, and exacerbations of respiratory symptoms. Follow-up by telephone was considered satisfactory as no biological measurements were needed, the interval between interviews was short, and telephone coverage was reliable in the area.<sup>32,33</sup> Information on comorbidities was gathered by asking for conditions listed in the Charlson Comorbidity Index.<sup>34</sup>

## Exacerbation definition

We defined a symptom-based AECOPD as an increase in two major symptoms (dyspnea, sputum volume, or sputum color) or one major and one minor symptom (cough, sore throat, nasal secretion, wheezing, or asthenia) for at least two consecutive days (modified Anthonisen criteria).<sup>35,36</sup> A health care utilization-defined exacerbation was defined by use of

antibiotics or corticosteroids due to respiratory disease or by hospitalization due to respiratory disease.

## Statistical analyses

To test the distribution of characteristics across participant groups, we used parametric (*t*-test, analysis of variance) or nonparametric ( $\chi^2$ , Kruskal–Wallis) tests.

The frequency of exacerbations was skewed. Thus, we chose Kruskal–Wallis tests with ties and negative binomial regression for bivariate and multivariate analyses, respectively.<sup>37</sup> For the latter, we first performed bivariate analyses of each possible predictor and included those that were significant with a *P*-value of <0.10 in the final multivariate model. To estimate the effect of sampled population, we pooled the population-based and hospital-recruited participants and adjusted for participant group as well as COPD severity (Global Initiative on Obstructive Lung Disease [GOLD]-defined FEV<sub>1</sub> categories). We estimated regression models both for symptom-defined exacerbations and exacerbations identified by health care utilization. The models included age, sex, smoking status, pack-years, educational level, FEV<sub>1</sub>% predicted, number of comorbid conditions, maintenance therapy (defined as regular use of long-acting muscarinic antagonists, long-acting beta-2 agonists, inhaled corticosteroids, or theophylline), influenza vaccination, pneumococcal vaccination, oxygen therapy, and BMI. The incidence rate ratio for each predictor gives their associated relative risk of exacerbation, adjusting for the other predictors.

All analyses were performed using Stata SE 13.1 (Stata-Corp LP, College Station, TX, USA).

## Results

### Characteristics

The characteristics and unadjusted exacerbation rates of each study group are shown in Table 1. Sex and smoking status did not vary between the participant groups, but differences were found for age, education, lung function, comorbidities, and being underweight (*P*<0.001). Nearly all hospital-recruited COPD patients received maintenance therapy for their COPD (80%), whereas a significantly lower percentage used maintenance therapy in both the population-based COPD sample and the control group (*P*<0.001). A similar pattern applied to vaccination status.

A population-recruited COPD patient had an average of 0.4 utilization-defined exacerbations per year and 2.9 symptom-defined exacerbations per year. The respective numbers for COPD patients from the hospital register were 1.0

utilization-defined exacerbations per year and 5.9 symptom-defined exacerbations per year, while the participants in the control group had 0.1 and 0.7 exacerbations per year with the respective exacerbation definitions (Table 1). For all three groups, the resulting exacerbation rates were skewed, with a total of 349 (83%) and 264 (63%) participants having zero or one exacerbation per year with the utilization-based and the symptom-based definitions, respectively.

### Bivariate analyses

In bivariate analyses, we found that receiving maintenance therapy was associated with a higher exacerbation rate. With the utilization-based definition, increased GOLD stage was related to increased exacerbation rate. We found no consistent pattern for age, sex, education, smoking status, BMI, or vaccination (Tables S1 and S2).

### Multivariate analyses

Tables S3 and S4 show the results from the bivariate and multivariate negative binomial regression analyses, including all COPD patients defined by either of the two study samples, and the results are illustrated in Figure 1.

Applying the utilization-based exacerbation definition (Table S3), we found that the incidence rate ratio for COPD exacerbations was significantly higher in the hospital sample compared to the population sample, even after extensive adjustment for potential confounders. There were increasingly higher exacerbation risks with increasing severity of COPD. Female sex and receiving maintenance therapy were also significantly associated with higher risk of exacerbation in the multivariate model. Applying the symptom-based exacerbation definition (Table S4), we found, with three exceptions, the same main predictors as with the utilization-based definition. The exceptions were female sex that was not significantly associated with exacerbation risk, increasing age that was significantly associated with a lower exacerbation risk, and having undergone influenza vaccination that was significantly associated with a lower risk of exacerbation.

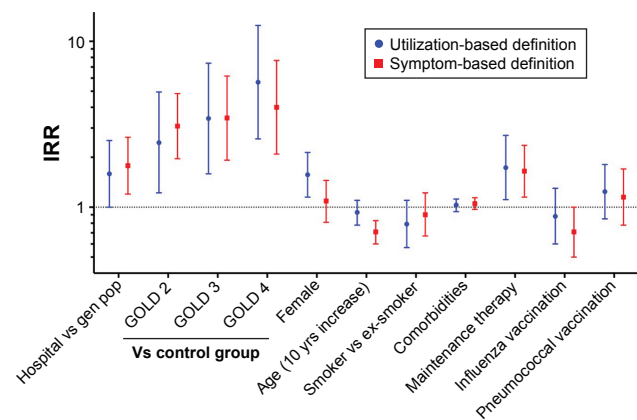
## Discussion

We have shown that on average, a community-dwelling COPD patient had 0.4 utilization-based exacerbations per year, while COPD patients selected from a hospital register had one exacerbation per year (2.5 times more). The results for the symptom-based definition were 2.9 and 5.9 exacerbations per year (2.0 times more), respectively, for the two groups. In multivariate regression analysis, belonging to the hospital sample corresponded with a 59%–78%

**Table 1** Characteristics of hospital- and population-recruited COPD cases and population-recruited control subjects in the EconCOPD study

Variable	Hospital-recruited COPD cases	Population-recruited COPD cases	Population-recruited controls	P-value
n	205	81	132	–
Male, n (%)	123 (60)	53 (65)	69 (52)	0.142
Age (yrs), mean (SD)	67 (9.2)	63 (10.0)	57 (10.6)	<0.001
Smoking status, n (%)				
Current smoker	68 (33)	38 (47)	63 (48)	0.012
Former smoker	137 (67)	43 (53)	69 (52)	–
Pack-years, mean (SD)	32.7 (31.0)	32.3 (35.6)	15.5 (12.3)	<0.001
Educational level, n (%)				
Primary	75 (37)	32 (40)	27 (20)	<0.001
Secondary	100 (49)	30 (37)	63 (48)	–
University	30 (15)	19 (23)	42 (32)	–
FEV <sub>1</sub> % predicted, n (%)				
≥80	–	–	132 (100)	<0.001
≥50–<80	103 (50)	69 (85)	–	–
≥30–<50	68 (33)	8 (10)	–	–
<30	34 (17)	4 (5)	–	–
Mean FEV <sub>1</sub> % predicted (SD)	47.7 (16.7)	64.9 (14.2)	95.4 (8.8)	<0.001
Median FEV <sub>1</sub> % predicted (IQR)	50.4 (26.8)	68.7 (16.7)	94.2 (10.1)	<0.001
Comorbid conditions				
Mean (SD)	1.9 (1.8)	1.2 (1.5)	0.8 (1.0)	<0.001
Median (IQR)	1 (3)	1 (2)	0 (1.5)	<0.001
Resource-defined exacerbations				
Mean (SD)	1.0 (1.2)	0.4 (0.9)	0.1 (0.4)	<0.001
Median (IQR)	1 (2)	0 (0)	0 (0)	<0.001
Symptom-defined exacerbations				
Mean (SD)	5.9 (6.1)	2.9 (6.2)	0.7 (1.5)	<0.001
Median (IQR)	4 (8)	1 (3)	0 (1)	<0.001
Maintenance therapy, n (%)	164 (80)	31 (38)	2 (2)	<0.001
Undergone vaccination, n (%)				
Influenza	146 (71)	28 (35)	15 (11)	<0.001
Pneumococcus	97 (47)	4 (5)	2 (2)	<0.001
Oxygen therapy, n (%)	19 (9)	0	0	<0.001
BMI (m/kg <sup>2</sup> ), n (%)				
Underweight	14 (7)	3 (4)	1 (1)	0.026
Normal range	80 (39)	30 (37)	58 (44)	0.543
Overweight	111 (54)	48 (59)	73 (55)	0.734

**Abbreviations:** yrs, years; SD, standard deviation; FEV<sub>1</sub>, forced expiratory volume in 1 second; IQR, interquartile range; BMI, body mass index.



**Figure 1** IRRs for COPD exacerbations when using a utilization-based and symptom-based definition.

**Note:** Results from multivariate negative binomial regression models.

**Abbreviations:** IRR, incidence rate ratio; gen pop, general population; GOLD, Global Initiative on Obstructive Lung Disease; yrs, years.

increased relative risk of experiencing an exacerbation compared to the population sample. In both groups, there were increasingly higher exacerbation rates with increasing COPD severity. By including control subjects, we have adjusted for the incidence of exacerbation-like events in subjects without respiratory disease.

This confirmed our hypothesis that COPD patients from a hospital register have more exacerbations than COPD patients found in the general population and, furthermore, that using a symptom-based definition results in a higher exacerbation rate than with a utilization-based definition.

The only population-based study that provides comparable data is the PLATINO study. It estimated an exacerbation-rate of 0.58/person/yr with a symptom-based exacerbation definition.<sup>15</sup> The study was retrospective with a longer

recollection period, and the subjects might have been more prone to recall bias. Bowler et al<sup>5</sup> found an exacerbation rate of 0.65/person/yr for COPD patients using a utilization-based definition. They included all GOLD stages, including stage I. The results from the TORCH study, where the sample was from outpatient clinics and a utilization-based definition was applied, showed an annual exacerbation rate between 0.85 and 1.13.<sup>6</sup> In the study performed by Husebø et al,<sup>7</sup> they used a utilization-based definition and found an annual exacerbation rate per person to be 1.40 for their outpatient sample of COPD patients. Our results are in line with the results from the PLATINO study, but extend the previous knowledge on exacerbation rates and give enhanced understanding of the implications of how the selection of study samples and exacerbation definitions affect the results.

The independent predictors of increased exacerbation rates were belonging to the hospital sample, decreasing FEV<sub>1</sub>/increasing airflow limitation, female sex, and receiving maintenance therapy for the utilization-based definition. For the symptom definition, the same predictors were significantly associated with higher exacerbation risk apart from female sex, which did not prove significant, and adding increasing age and influenza vaccination, which were associated with a lower risk if present.

It is a novel, but not surprising, finding that hospital samples gave higher exacerbation rates than population-based samples. The participants recruited from the hospital register can be expected to have more severe disease as seen in the newly published study by Müllerova et al<sup>13</sup> and therefore to exacerbate more often. Müllerova et al found a hazard ratio for hospitalization due to AECOPD at 1.12 per 5% drop of FEV<sub>1</sub>% predicted, and those who did not exacerbate had a significantly lower BODE (Body mass index, airflow Obstruction, Dyspnea and Exercise capacity) index. We think our analyses demonstrated that studies on AECOPD recruiting from outpatient or hospital samples are biased toward higher exacerbation rates as compared with a general population. This might be not only due to differences in airflow limitation but also due to unidentified factors associated with the so-called frequent exacerbator phenotype.

The observed exacerbation risk associated with decreasing FEV<sub>1</sub> has previously been seen by various authors.<sup>1,3,7,10,11,15,38</sup> As the airflow limitation increases, even minor influences from exacerbation-causing agents may lead to a worsening where a change in medication or even hospitalization is needed.

Whether female sex is truly associated with a greater risk of COPD exacerbations is an ongoing debate. It is not known if females perceive their symptoms differently,

seek medical aid more frequently, or are genuinely more prone to exacerbations than men.<sup>39,40</sup> Studies have shown both biological and cultural associations between sex and respiratory disease.<sup>41</sup> We found that female sex was only significantly associated with exacerbation risk with the utilization-based exacerbation definition. One explanation for this finding might be that women have more severe COPD exacerbations requiring medical care, as recently found by Kilic et al.<sup>42</sup> The alternative would be that men seek medical advice less frequently than women (a cultural explanation). In addition, the doctor's response to their patients' symptoms might differ by the patient sex.

In the multivariate analysis, receiving maintenance therapy was independently and significantly associated with elevated risk of exacerbation. We interpret this association as an expression of disease severity. The patients with the most impairing disease are also probably those advised to use medication and hence more prone to exacerbation due to their grade of disease and not due to the medication itself. This view is strengthened by the fact that 80% of the hospital samples used maintenance therapy (the group with the lowest FEV<sub>1</sub> and most comorbidities in our dataset) and as few as 38% of the population-based COPD cases used such medication.

Having undergone influenza vaccination was significantly associated with a lower exacerbation risk. This confirms previous results from large datasets where prophylactic vaccination is proven to reduce acute exacerbations and does not provoke exacerbations when administered.<sup>43</sup> We could not find an association between pneumococcal vaccination and exacerbation risk. We believe this is due to the fact that as few as 47% of the hospital-based COPD patients and 5% of the population-based COPD cases had taken this vaccine, and hence, we had no power to evaluate this effect.<sup>43</sup>

The main strength of our study is that we included both a population-based and a hospital-based group of COPD patients and that the analyses were performed on both groups highlighting the importance of source origin. We included two much-used definitions of an exacerbation and performed our analyses for these definitions separately on the same dataset. To our best knowledge, this has not been done before including a population-based sample. The Hokkaido cohort included several exacerbation definitions, but no population sample nor a control group.<sup>8</sup> Additionally, our project was prospective and had trained health personnel doing telephone interviews at intervals minimizing recall bias.<sup>44</sup> The overall response rate was high (79%), which enabled us to generalize our results to the Norwegian population.



Some possible weaknesses deserve mentioning. First, never-smoking subjects and subjects younger than 40 years were excluded. This was to avoid confounding with asthma patients and to ensure that potential differences between COPD cases and controls could not be explained by distinct smoking history. Second, the number of population-recruited COPD cases was lower than the number of participants from the other two groups and there were fewer with severe and very severe airflow limitation in this group. Yet, even in this group, there was a significantly increasing exacerbation risk with worsening grade of COPD, suggesting sufficient power. Third, participants of the current study were recruited from the city of Bergen, Western Norway, and eleven surrounding municipalities. However, a comparison between national Norwegian survey data for individuals older than 40 years with patients from the original cohort study that EconCOPD recruited from showed no discrepancy.<sup>45</sup> Finally, with our given sample size, the current analyses might have been prone to type II errors. Nevertheless, we were able to demonstrate a clear effect of the main explanatory variable (population) on the outcome.

Our results can help clinicians in identifying groups of patients at high risk of exacerbation who can benefit from better prevention of modifiable predictors and early onset of treatment, which may reduce morbidity and mortality.

We have found that COPD patients from a population sample exacerbate 2.0–2.5 times less frequently than hospital-based COPD patients, depending on the definition used. Apart from belonging to the hospital sample, increasing COPD severity gives significantly higher risk of exacerbation.

## Conclusion

Our results, combined with previous findings,<sup>46,47</sup> demonstrate that several studies on exacerbation rate use selected populations<sup>6,14,38</sup> and hence suggest exaggerated rates of exacerbation, which in turn overstate the effect of medication. Thus, our finding implies that any study with AECOPD as the primary outcome should recruit from population-based samples and, if not possible, explicitly state from which population patients are recruited. Furthermore, implications of the chosen definition of AECOPD should be discussed.

## Acknowledgments

The authors are indebted to Margrete Klemmetsby, Hege Marie Schnelle, Idunn Riisnes, Jan Egil Romestrand, Erik Helgeland, Jan Schille, Lene Svendsen, Tonje Lauvaasvaag, Heike Wiegmann, and Lene Kvamsdal for their contribution in collecting the data for EconCOPD. ME has recently

received a research grant from AstraZeneca. Within the last 3 years, TME has received travel grants from InterMune for the AIR conferences, a grant for the MicroILD study from Boehringer Ingelheim, and speaker fees from AstraZeneca and Boehringer Ingelheim. RG reports grants from the Norwegian Association of Heart and Lung Patients and EXTRA funds from the Norwegian Foundation for Health and Rehabilitation as well as YaraPraxair during the conduct of the study, grants and personal fees from Boehringer Ingelheim, personal fees from AstraZeneca, and personal fees from GlaxoSmithKline outside the submitted work. AG has during the last 3 years participated in the advisory boards of Chesi Pharma AS, Sverige, Novartis Norge AS, Takeda Nycomed Norge, AstraZeneca Norge, and Boehringer Ingelheim, Norway. The Norway GenKOLS study, where he was the principal investigator, was supported by GlaxoSmithKline Research & Development Limited, UK.

## Author contributions

Design, planning, and data collection were carried out by RG, AG, and AJ. Data management and quality control was performed by ME and RG. Statistical analyses were carried out by ME, RG, AJ, and TME. Analysis planning was done by RG, AJ, and ME. Drafting was carried out by ME. Revision and approval of drafts were performed by RG, TME, AJ, AG, PB, and ME. All authors contributed toward data analysis, drafting and critically revising the paper and agree to be accountable for all aspects of the work.

## Disclosure

The authors report no conflicts of interest in this work.

## References

1. Donaldson GC, Seemungal TA, Bhowmik A, Wedzicha JA. Relationship between exacerbation frequency and lung function decline in chronic obstructive pulmonary disease. *Thorax*. 2002;57(10):847–852.
2. Sullivan SD, Ramsey SD, Lee TA. The economic burden of COPD. *Chest*. 2000;117(2 suppl):5S–9S.
3. Halpin DM, Decramer M, Celli B, Kesten S, Liu D, Tashkin DP. Exacerbation frequency and course of COPD. *Int J Chron Obstruct Pulmon Dis*. 2012;7:653–661.
4. Seemungal TA, Donaldson GC, Paul EA, Bestall JC, Jeffries DJ, Wedzicha JA. Effect of exacerbation on quality of life in patients with chronic obstructive pulmonary disease. *Am J Respir Crit Care Med*. 1998;157(5 pt 1):1418–1422.
5. Bowler RP, Kim V, Regan E, et al; COPDGene Investigators. Prediction of acute respiratory disease in current and former smokers with and without COPD. *Chest*. 2014;146(4):941–950.
6. Jenkins CR, Celli B, Anderson JA, et al. Seasonality and determinants of moderate and severe COPD exacerbations in the TORCH study. *Eur Respir J*. 2012;39(1):38–45.
7. Husebø GR, Bakke PS, Aanerud M, et al. Predictors of exacerbations in chronic obstructive pulmonary disease – results from the Bergen COPD cohort study. *PLoS One*. 2014;9(10):e109721.

8. Suzuki M, Makita H, Ito YM, et al; Hokkaido COPD Cohort Study Investigators. Clinical features and determinants of COPD exacerbation in the Hokkaido COPD cohort study. *Eur Respir J*. 2014;43(5):1289–1297.
9. Tan WC, Bourbeau J, Hernandez P, et al; CanCOLD Collaborative Research Group. Exacerbation-like respiratory symptoms in individuals without chronic obstructive pulmonary disease: results from a population-based study. *Thorax*. 2014;69(8):709–717.
10. Niewoehner DE, Lokhygina Y, Rice K, et al. Risk indexes for exacerbations and hospitalizations due to COPD. *Chest*. 2007;131(1):20–28.
11. Miravittles M, Guerrero T, Mayordomo C, et al. Factors associated with increased risk of exacerbation and hospital admission in a cohort of ambulatory COPD patients: a multiple logistic regression analysis. The EOLO Study Group. *Respiration*. 2000;67(5):495–501.
12. Beeh KM, Glaab T, Stowasser S, et al. Characterisation of exacerbation risk and exacerbator phenotypes in the POET-COPD trial. *Respir Res*. 2013;14:116.
13. Müllerova H, Maselli DJ, Locantore N, et al; ECLIPSE Investigators. Hospitalized exacerbations of COPD: risk factors and outcomes in the ECLIPSE cohort. *Chest*. 2015;147(4):999–1007.
14. Hurst JR, Vestbo J, Anzueto A, et al; Evaluation of COPD Longitudinally to Identify Predictive Surrogate Endpoints (ECLIPSE) Investigators. Susceptibility to exacerbation in chronic obstructive pulmonary disease. *N Engl J Med*. 2010;363(12):1128–1138.
15. de Oca MM, Tálamo C, Halbert RJ, et al. Frequency of self-reported COPD exacerbation and airflow obstruction in five Latin American cities: the Proyecto Latinoamericano de Investigación en Obstrucción Pulmonar (PLATINO) study. *Chest*. 2009;136(1):71–78.
16. Ozyilmaz E, Kokturk N, Teksut G, Tatlicioglu T. Unsuspected risk factors of frequent exacerbations requiring hospital admission in chronic obstructive pulmonary disease. *Int J Clin Pract*. 2013;67(7):691–697.
17. Groenewegen KH, Postma DS, Hop WC, et al; COSMIC Study Group. Increased systemic inflammation is a risk factor for COPD exacerbations. *Chest*. 2008;133(2):350–357.
18. Eagan TM, Ueland T, Wagner PD, et al. Systemic inflammatory markers in COPD: results from the Bergen COPD Cohort Study. *Eur Respir J*. 2010;35(3):540–548.
19. Thomsen M, Ingebrigtsen TS, Marott JL, et al. Inflammatory biomarkers and exacerbations in chronic obstructive pulmonary disease. *JAMA*. 2013;309(22):2353–2361.
20. Tufvesson E, Ekberg M, Bjerner L. Inflammatory biomarkers in sputum predict COPD exacerbations. *Lung*. 2013;191(4):413–416.
21. Sakae TM, Pizzichini MM, Teixeira PJ, Silva RM, Trevisol DJ, Pizzichini E. Exacerbations of COPD and symptoms of gastroesophageal reflux: a systematic review and meta-analysis. *J Bras Pneumol*. 2013;39(3):259–271.
22. Terada K, Muro S, Sato S, et al. Impact of gastro-oesophageal reflux disease symptoms on COPD exacerbation. *Thorax*. 2008;63(11):951–955.
23. Quint JK, Baghai-Ravary R, Donaldson GC, Wedzicha JA. Relationship between depression and exacerbations in COPD. *Eur Respir J*. 2008;32(1):53–60.
24. Laurin C, Moullec G, Bacon SL, Lavoie KL. Impact of anxiety and depression on chronic obstructive pulmonary disease exacerbation risk. *Am J Respir Crit Care Med*. 2012;185(9):918–923.
25. Hallin R, Koivisto-Hursti UK, Lindberg E, Janson C. Nutritional status, dietary energy intake and the risk of exacerbations in patients with chronic obstructive pulmonary disease (COPD). *Respir Med*. 2006;100(3):561–567.
26. Corhay JL, Vincken W, Schlessers M, Bossuyt P, Imschoot J. Chronic bronchitis in COPD patients is associated with increased risk of exacerbations: a cross-sectional multicentre study. *Int J Clin Pract*. 2013;67(12):1294–1301.
27. Nielsen R, Klemmetsby M, Gulsvik A. Economics of COPD: literature review and experiences from field work. *Clin Respir J*. 2008;2(suppl 1):104–110.
28. Johannessen A, Omenaas ER, Bakke PS, Gulsvik A. Implications of reversibility testing on prevalence and risk factors for chronic obstructive pulmonary disease: a community study. *Thorax*. 2005;60(10):842–847.
29. Lamprecht B, McBurnie MA, Vollmer WM, et al; BOLD Collaborative Research Group. COPD in never smokers: results from the population-based burden of obstructive lung disease study. *Chest*. 2011;139(4):752–763.
30. Gulsvik A, Tosteson T, Bakke P, Humerfelt S, Weiss ST, Speizer FE. Expiratory and inspiratory forced vital capacity and one-second forced volume in asymptomatic never-smokers in Norway. *Clin Physiol*. 2001;21(6):648–660.
31. ATS. Standardization of spirometry. *Am J Respir Crit Care Med*. 1995;152(11):1107–1136.
32. Landis SH, Muellerova H, Mannino DM, et al. Continuing to Confront COPD International Patient Survey: methods, COPD prevalence, and disease burden in 2012–2013. *Int J Chron Obstruct Pulmon Dis*. 2014;9:597–611.
33. Jansson SA, Backman H, Stenling A, Lindberg A, Rönmark E, Lundbäck B. Health economic costs of COPD in Sweden by disease severity – has it changed during a ten years period? *Respir Med*. 2013;107(12):1931–1938.
34. Charlson ME, Pompei P, Ales KL, MacKenzie CR. A new method of classifying prognostic comorbidity in longitudinal studies: development and validation. *J Chronic Dis*. 1987;40(5):373–383.
35. Anthonisen NR, Manfreda J, Warren CP, Hershfield ES, Harding GK, Nelson NA. Antibiotic therapy in exacerbations of chronic obstructive pulmonary disease. *Ann Intern Med*. 1987;106(2):196–204.
36. Donaldson GC, Wedzicha JA. COPD exacerbations. 1: epidemiology. *Thorax*. 2006;61(2):164–168.
37. Keene ON, Calverley PM, Jones PW, Vestbo J, Anderson JA. Statistical analysis of exacerbation rates in COPD: TRISTAN and ISOLDE revisited. *Eur Respir J*. 2008;32(1):17–24.
38. Spencer S, Calverley PM, Burge PS, Jones PW. Impact of preventing exacerbations on deterioration of health status in COPD. *Eur Respir J*. 2004;23(5):698–702.
39. Camp PG, Goring SM. Gender and the diagnosis, management, and surveillance of chronic obstructive pulmonary disease. *Proc Am Thorac Soc*. 2007;4(8):686–691.
40. Aryal S, Diaz-Guzman E, Mannino DM. COPD and gender differences: an update. *Transl Res*. 2013;162(4):208–218.
41. Becklake MR, Kauffmann F. Gender differences in airway behaviour over the human life span. *Thorax*. 1999;54(12):1119–1138.
42. Kilic H, Kokturk N, Sari G, Cakir M. Do females behave differently in COPD exacerbation? *Int J Chron Obstruct Pulmon Dis*. 2015;10:823–830.
43. Varkey JB, Varkey AB, Varkey B. Prophylactic vaccinations in chronic obstructive pulmonary disease: current status. *Curr Opin Pulm Med*. 2009;15(2):90–99.
44. Evans C, Crawford B. Patient self-reports in pharmaco-economic studies. Their use and impact on study validity. *Pharmacoeconomics*. 1999;15(3):241–256.
45. Nielsen R. Costs of Chronic Obstructive Pulmonary Disease in a General Population. Methodological Aspects and Longitudinal Perspectives (dissertation). Bergen: University of Bergen; 2011.
46. Nielsen R, Johannessen A, Omenaas ER, Bakke PS, Askildsen JE, Gulsvik A. Excessive costs of COPD in ever-smokers. A longitudinal community study. *Respir Med*. 2011;105(3):485–493.
47. Erdal M, Johannessen A, Askildsen JE, Eagan T, Gulsvik A, Grønseth R. Productivity losses in chronic obstructive pulmonary disease: a population-based survey. *BMJ Open Respir Res*. 2014;1(1):e000049.

## Supplementary materials

**Table S1** Number of events of exacerbations of respiratory symptoms in population-recruited cases by sex, age, smoking status, education, and FEV<sub>1</sub>% predicted

Variable	Resource-defined exacerbations	Kwallis with ties, P-values	Symptom-defined exacerbations	Kwallis with ties, P-values
Age (yrs), mean (SD)		0.0085		0.3965
<50	1.3 (1.5)		2.3 (2.9)	
50–65	0.2 (0.6)		3.9 (7.8)	
>65	0.5 (1.1)		1.5 (2.9)	
Sex, mean (SD)		0.1015		0.0910
Female	0.6 (1.2)		4.0 (5.4)	
Male	0.2 (0.8)		2.3 (6.5)	
Smoking status, mean (SD)		0.2638		0.0939
Current	0.4 (0.7)		3.3 (8.1)	
Ex-smoker	0.4 (1.1)		2.4 (3.9)	
Pack-years, mean (SD)		0.7691		0.0959
<20	0.3 (0.6)		1.8 (3.4)	
20–40	0.4 (1.0)		4.1 (8.2)	
>40	0.5 (1.3)		2.2 (5.0)	
Education, mean (SD)		0.0254		0.8132
Primary	0.2 (0.5)		3.2 (8.3)	
Secondary	0.8 (1.4)		2.9 (4.8)	
University	0.1 (0.2)		2.3 (3.7)	
FEV <sub>1</sub> % predicted, mean (SD)		0.0437		0.7227
50–80	0.2 (0.6)		2.9 (6.6)	
30–50	0.8 (1.2)		2.4 (3.2)	
<30	2.3 (2.6)		2.5 (3.1)	
Number of comorbid conditions, mean (SD)		0.4162		0.2860
0	0.3 (0.6)		3.9 (9.2)	
1	0.4 (1.1)		2.0 (3.7)	
2	0.2 (0.4)		1.2 (1.8)	
≥3	0.9 (1.4)		4.3 (5.0)	
Maintenance therapy, mean (SD)		0.0008		0.0008
Yes	0.7 (1.2)		4.6 (8.0)	
No	0.1 (0.2)		1.1 (2.4)	
Influenza vaccination, mean (SD)		0.7422		0.2584
Yes	0.5 (1.2)		2.3 (3.4)	
No	0.3 (0.8)		3.2 (7.3)	
Pneumococcal vaccination, mean (SD)		0.8876		0.0457
Yes	0.3 (0.5)		5.3 (4.3)	
No	0.4 (1.0)		2.7 (6.3)	
BMI, mean (SD)		0.0007		0.1241
Underweight	2.7 (1.5)		8.7 (8.6)	
Normal range	0.3 (0.8)		4.1 (8.9)	
Overweight	0.3 (0.8)		1.7 (2.9)	

**Notes:** Exacerbations are defined by increased consumption of resources or by symptoms (Anthonisen criteria). The number of events is given as mean (SD).

**Abbreviations:** FEV<sub>1</sub>, forced expiratory volume in 1 second; SD, standard deviation; Kwallis, Kruskal–Wallis; yrs, years; BMI, body mass index.



**Table S2** Number of events of exacerbations of respiratory symptoms in hospital-recruited cases by sex, age, smoking status, education, and FEV<sub>1</sub>% predicted

Variable	Resource-defined exacerbations	Kwallis with ties, P-values	Symptom-defined exacerbations	Kwallis with ties, P-values
Age (yrs), mean (SD)		0.3343		0.0370
<50	1.3 (1.3)		6.5 (5.1)	
50–65	1.1 (1.2)		7.1 (6.4)	
>65	0.9 (1.2)		5.0 (5.9)	
Sex, mean (SD)		0.0537		0.0920
Female	1.2 (1.3)		6.4 (6.0)	
Male	0.8 (1.0)		5.5 (6.3)	
Smoking status, mean (SD)		0.0539		0.0489
Current	0.8 (1.0)		4.9 (5.7)	
Ex-smoker	1.1 (1.2)		6.4 (6.3)	
Pack-years, mean (SD)		0.8827		0.8142
<20	1.0 (1.3)		5.8 (6.3)	
20–40	1.0 (1.2)		5.9 (5.9)	
>40	1.0 (1.1)		5.8 (6.5)	
Education, mean (SD)		0.2856		0.3174
Primary	1.0 (1.3)		5.5 (5.9)	
Secondary	1.0 (1.1)		5.9 (6.5)	
University	1.2 (1.1)		6.8 (5.7)	
FEV <sub>1</sub> % predicted, mean (SD)		0.001		0.1161
50–80	0.7 (1.1)		5.2 (6.0)	
30–50	1.1 (1.1)		6.2 (5.5)	
<30	1.7 (1.2)		7.1 (7.7)	
Number of comorbid conditions, mean (SD)		0.8516		0.7727
0	0.9 (1.0)		6.0 (6.3)	
1	1.1 (1.1)		5.7 (6.4)	
2	1.1 (1.5)		5.4 (6.3)	
≥3	1.0 (1.1)		6.1 (5.8)	
Maintenance therapy, mean (SD)		0.0006		0.0006
Yes	1.1 (1.2)		6.2 (6.2)	
No	0.3 (0.4)		3.1 (5.5)	
Influenza vaccination, mean (SD)		0.2728		0.7331
Yes	1.0 (1.1)		5.5 (8.6)	
No	0.9 (1.3)		6.7 (7.4)	
Pneumococcal vaccination, mean (SD)		0.0002		0.1613
Yes	1.3 (1.2)		6.0 (5.8)	
No	0.7 (1.1)		5.7 (6.5)	
O <sub>2</sub> therapy, mean (SD)		0.0025		0.5706
Yes	1.8 (1.3)		6.2 (6.0)	
No	0.9 (1.1)		5.8 (6.2)	
BMI, mean (SD)		0.1172		0.8479
Underweight	1.6 (1.3)		5.4 (4.3)	
Normal range	0.9 (1.2)		5.4 (5.7)	
Overweight	1.0 (1.2)		6.2 (6.7)	

**Notes:** Exacerbations are defined by increased consumption of resources or by symptoms (Anthonisen criteria). The number of events are given as mean (SD).

**Abbreviations:** FEV<sub>1</sub>, forced expiratory volume in 1 second; SD, standard deviation; Kwallis, Kruskal–Wallis; yrs, years; BMI, body mass index.

**Table S3** IRRs (95% CI) for AECOPD with a resource-based exacerbation definition

Variable	Bivariate	Multivariate
Population		
General	Ref	Ref
Hospital	4.58 (3.19–6.60)*	1.59 (1.00–2.52)
Sex		
Male	Ref	Ref
Female	1.45 (1.02–2.05)*	1.57 (1.15–2.14)
Age, per 10-year increase	1.18 (1.00–1.39)*	0.93 (0.78–1.10)
Smoking status		
Former	Ref	Ref
Current	0.60 (0.42–0.86)*	0.79 (0.57–1.10)
Pack-years, per increase of 10	1.06 (0.98–1.14)	–
Educational level		
Primary	Ref	–
Secondary	1.06 (0.71–1.57)	–
University	0.75 (0.46–1.25)	–
COPD grade		
Control	Ref	Ref
GOLD II	4.55 (2.57–8.07)*	2.45 (1.22–4.95)
GOLD III	9.03 (5.00–16.31)*	3.43 (1.59–7.38)
GOLD IV	15.52 (8.34–28.86)*	5.67 (2.58–12.48)
Comorbidities, continuous	1.16 (1.04–1.28)*	1.03 (0.94–1.12)
Maintenance therapy		
No	Ref	Ref
Yes	4.95 (3.45–7.09)*	1.73 (1.11–2.71)
Influenza vaccination		
No	Ref	Ref
Yes	2.38 (1.69–3.35)*	0.88 (0.60–1.30)
Pneumococcal vaccination		
No	Ref	Ref
Yes	3.03 (2.17–4.25)*	1.24 (0.85–1.81)
BMI		
Underweight and normal weight	Ref	–
Overweight	0.90 (0.64–1.28)	–

**Notes:** \* $P < 0.10$ . The results are from negative binomial regression models.

**Abbreviations:** IRR, incidence rate ratio; CI, confidence interval; AECOPD, acute exacerbations of COPD; Ref, reference; GOLD, Global Initiative on Obstructive Lung Disease; BMI, body mass index.

**Table S4** IRRs (95% CI) for AECOPD with a symptom-based exacerbation definition

Variable	Bivariate	Multivariate
Population		
General	Ref	Ref
Hospital	3.81 (2.86–5.07)*	1.78 (1.20–2.64)
Sex		
Male	Ref	Ref
Female	1.15 (0.84–1.57)	1.09 (0.81–1.45)
Age, per 10-year increase	1.02 (0.87–1.21)	0.71 (0.60–0.83)
Smoking status		
Former	Ref	Ref
Current	0.74 (0.54–1.02)	0.90 (0.67–1.22)
Pack-years, per increase of 10	1.07 (0.99–1.16)	–
Educational level		
Primary	Ref	–
Secondary	0.94 (0.66–1.34)	–
University	0.78 (0.51–1.21)	–
COPD grade		
Control	Ref	Ref
GOLD II	5.91 (4.12–8.47)*	3.08 (1.96–4.84)
GOLD III	8.00 (5.23–12.22)*	3.45 (1.92–6.18)
GOLD IV	9.15 (5.45–15.38)*	4.00 (2.09–7.66)
Comorbidities, continuous	1.13 (1.03–1.24)*	1.05 (0.97–1.14)
Maintenance therapy		
No	Ref	Ref
Yes	3.49 (2.62–4.65)*	1.65 (1.15–2.36)
Influenza vaccination		
No	Ref	Ref
Yes	1.65 (1.21–2.25)*	0.71 (0.50–1.00)
Pneumococcal vaccination		
No	Ref	Ref
Yes	2.03 (1.43–2.87)*	1.15 (0.78–1.70)
BMI		
Underweight and normal weight	Ref	–
Overweight	0.96 (0.70–1.31)	–

**Notes:** \* $P < 0.10$ . The results are from negative binomial regression models.

**Abbreviations:** IRR, incidence rate ratio; CI, confidence interval; AECOPD, acute exacerbations of COPD; Ref, reference; GOLD, Global Initiative on Obstructive Lung Disease; BMI, body mass index.

## International Journal of COPD

### Publish your work in this journal

The International Journal of COPD is an international, peer-reviewed journal of therapeutics and pharmacology focusing on concise rapid reporting of clinical studies and reviews in COPD. Special focus is given to the pathophysiological processes underlying the disease, intervention programs, patient focused education, and self management protocols.

Submit your manuscript here: <http://www.dovepress.com/international-journal-of-chronic-obstructive-pulmonary-disease-journal>

## Dovepress

This journal is indexed on PubMed Central, MedLine and CAS. The manuscript management system is completely online and includes a very quick and fair peer-review system, which is all easy to use. Visit <http://www.dovepress.com/testimonials.php> to read real quotes from published authors.