

Life-saving urgent intervention in a low-birth-weight newborn with obstructed supracardiac total anomalous pulmonary venous connection: Stenting the vertical vein

Alper Güzeltaş, İbrahim Cansaran Tanıdır, Taner Kasar
Department of Pediatric Cardiology, İstanbul Mehmet Akif Ersoy
Thoracic and Cardiovascular Surgery Center and Research Hospital;
İstanbul-Turkey

Introduction

In total anomalous pulmonary venous connection (TAPVC), pulmonary venous blood flow abnormally returns to join the systemic venous tributary or right atrium, and the pulmonary vascular resistance may be elevated if a form of obstruction occurs in this circuit (1). Neonates and infants with obstructed TAPVC can present with severe cyanosis, pulmonary hypertension, and low cardiac output, requiring emergency surgical intervention (2). The most common site of obstruction is the

vertical vein at the level of the left pulmonary artery and the left main bronchus in patients with supracardiac TAPVC (1, 3). Immediate relief of the obstruction is required in these patients (3). Because surgical-intervention mortality is high, particularly in patients with obstructed TAPVC, preoperative stabilization by temporarily relieving the obstruction may improve outcomes in this population (3, 4). This case report describes stent implantation as a short-term palliative treatment for obstructed supracardiac TAPVC.

Case Report

A 3-day-old boy weighing 2.4 kg was referred to our clinic because of central cyanosis, respiratory distress, and hypoxia. Upon admission, he was gasping, with bradycardia and severe metabolic acidosis. The patient was immediately admitted to the pediatric cardiac intensive care, and endotracheal intubation and inotropic support were started. Chest X-ray showed severe pulmonary venous congestion. Echocardiogram revealed that the pulmonary veins were draining into a collector sac posteriorly, the junction of the collector sac and the vertical vein narrowed as it coursed behind the left pulmonary artery, and the vertical vein drained into the innominate vein, causing pulmonary hypertension (70 mm Hg) (Fig. 1a-c). The peak Doppler velocity in the

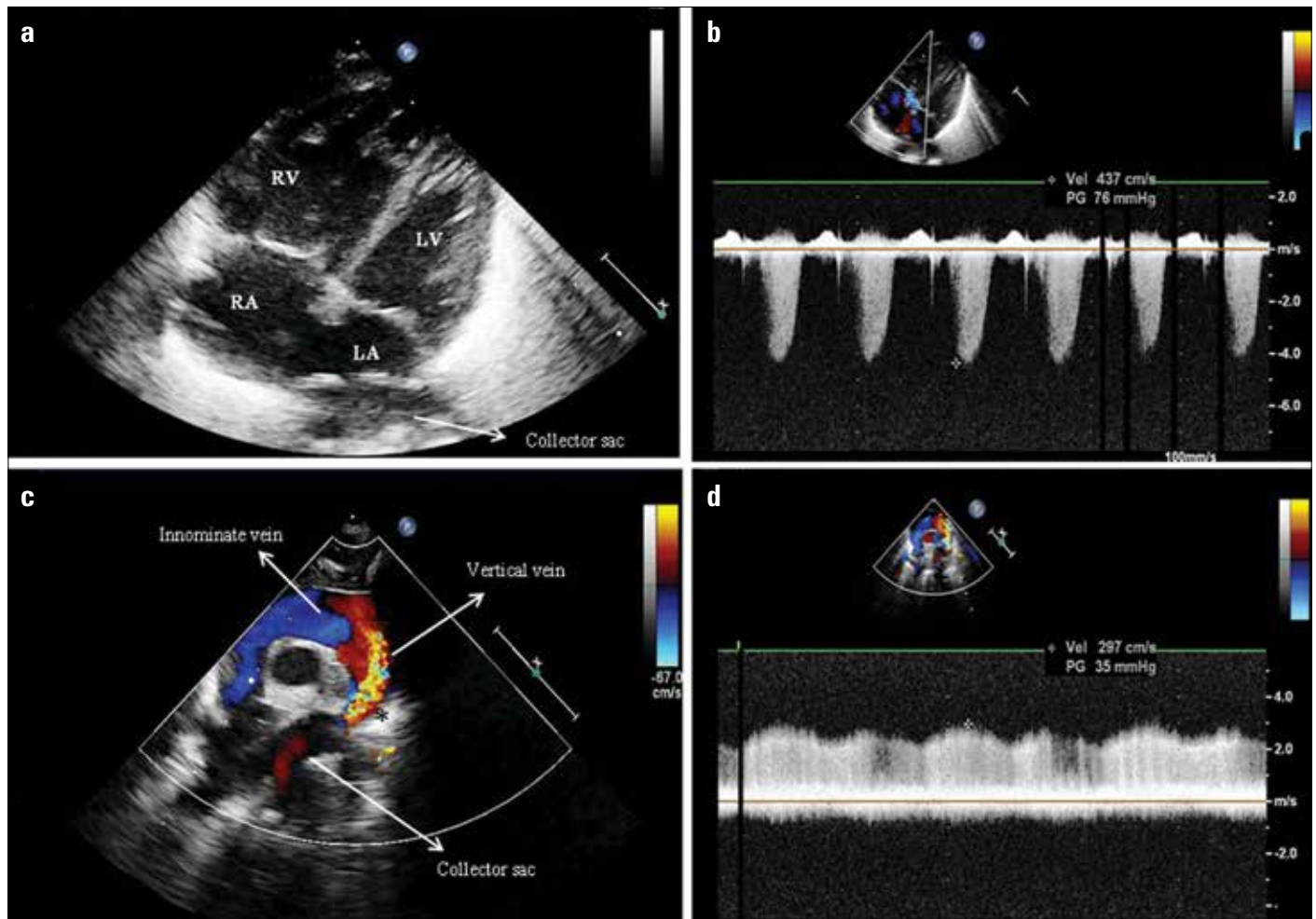


Figure 1. a-d. Echocardiographic views. (a) Four-chamber view, with emphasis on right ventricular enlargement. (b) Continuous wave Doppler of the tricuspid regurgitation. (c) Colour Doppler view of the vertical vein, with emphasis on the narrowed part. (d) Continuous wave Doppler of the narrowed part of the vertical vein

LA - left atrium; LV - left ventricle; RA - right atrium; RV - right ventricle, *shows narrowed part of the vertical vein

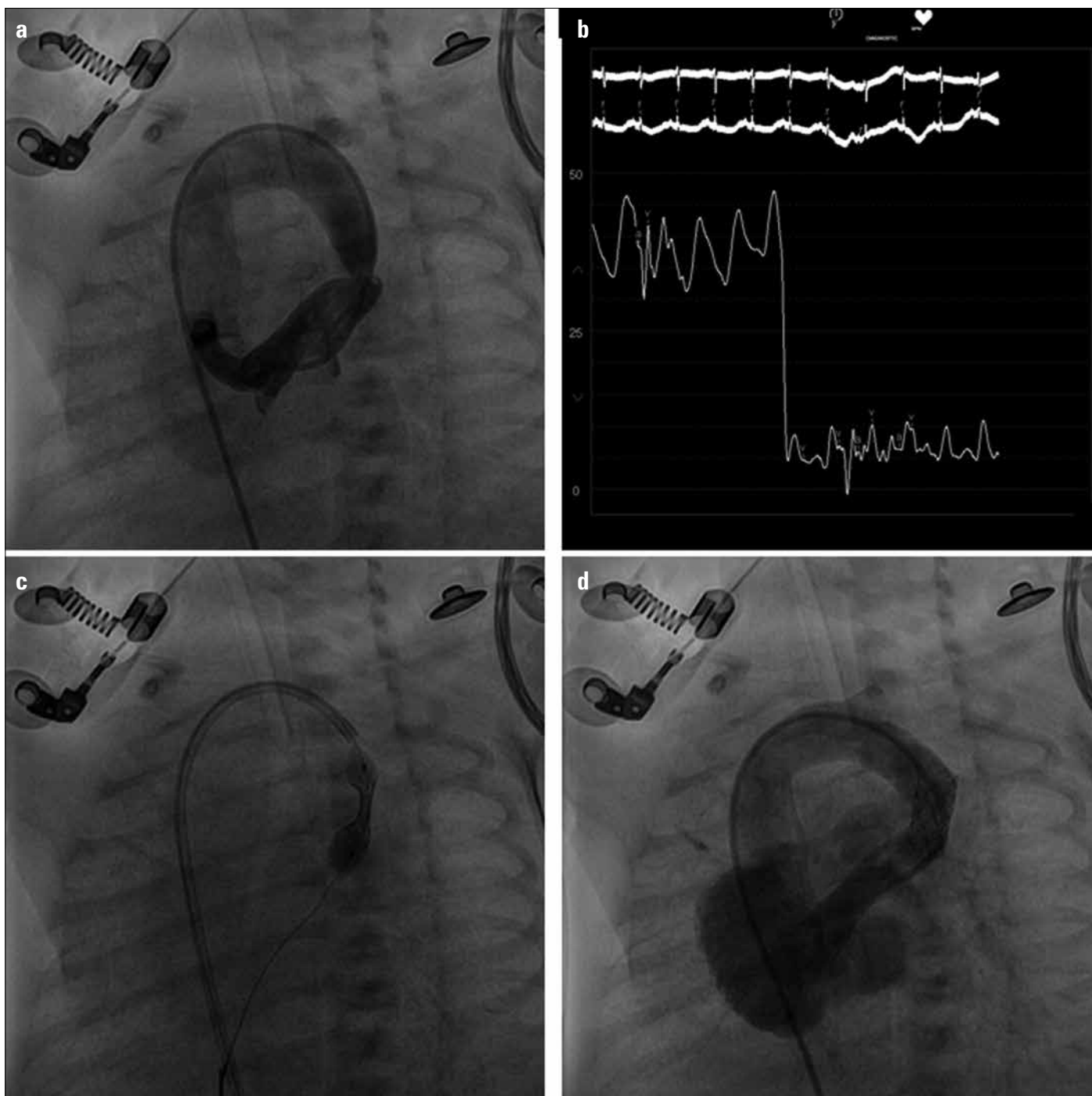


Figure 2. a-d. Angiographic evaluation. (a) Contrast injection into the collector sac, with emphasis on the narrowed part. (b) Pull-back pressure recording from the collector sac to the vertical vein. (c) Opening the stent, with emphasis on the stent waist. (d) Contrast injection into the collector sac after stenting the vertical vein

vertical vein was 3 m/s (Fig. 1d). The saturation was 70% on 100% oxygen.

During cardiac catheterization, selective right and left pulmonary angiography and direct injection of contrast into the proximal segment of the vertical vein showed narrowing in the mid-portion of the vertical vein, with a length of 6 mm and a minimum diameter of 3.6 mm (Fig. 2a). A 4F JR4 catheter was advanced into the collector sac through the femoral vein, inferior vena cava, right atrium, superior vena cava, left innominate vein, and vertical vein. The baseline pres-

ures were as follows: left innominate vein, 8 mm Hg; right and left atrial, 8 mm Hg; right ventricle, 60/9 mm Hg; pulmonary artery, 58/32 (mean: 44) mm Hg; and pulmonary venous confluence mean, 29 mm Hg. The patient was hypotensive from a low cardiac output despite inotropic support (Fig. 2b).

The 4F JR4 was exchanged for a 6F MPA 3.5 guiding catheter. The wire was then exchanged for an extra-support 0.014-inch coronary guidewire to enable the advancement of a 7-mm \times 15-mm Palmaz Blue balloon-expandable peripheral stent (Cordis Endovascular, Warren,

NJ). The stent was placed across the stenosis and dilated until the waist completely disappeared (Fig. 2c-d, Video 1). After stent implantation, the pressure gradient across the stent dropped from 21 mm Hg to zero. Echocardiographic and angiographic evaluation of the left pulmonary artery revealed no signs of obstruction. The saturation increased to 80% after the procedure. The patient was extubated soon after the procedure and discharged 4 days later with 85%-90% saturation in the room air. He had a surgical TAPVC repair at the age of 2.5 months (weight 5 kg). He was discharged from the hospital 12 days after the surgery.

Discussion

In patients with TAPVC, the most common drainage site is to the left innominate vein through the left vertical vein. The vertical vein courses posterior to the left pulmonary artery and anterior to the left main bronchus; it then ascends to the anterior mediastinum where it joins the left innominate vein. Obstructed TAPVC can cause severe hypoxia and acidosis because of pulmonary venous congestion (1, 3). Although surgical repair is the primary treatment modality for TAPVC patients, in critically ill patients, pulmonary vein obstruction or low body weight at the time of operation are potential risk factors for hospital mortality (3-6). The operative mortality is up to 7% for isolated TAPVC; this rate is higher in obstructed patients (5). Several previous cases have reported transcatheter interventional procedures as alternative therapeutic options for relief of obstruction and stabilizing clinical status before surgery (1, 3-4).

Conclusion

Stenting of the vertical vein is an effective therapy to acutely stabilize a sick neonate with obstructed supracardiac TAPVC. Catheter intervention should be considered as part of the preoperative cardiovascular stabilization strategy for high-risk infants with obstructed supracardiac TAPVC.

Video 1. Angiographic views.

References

1. Kilgore A, Lucas V, Collins T, Snyder CS. Stent implantation as a stabilization technique in supracardiac total anomalous pulmonary venous connection. *Catheter Cardiovasc Interv* 2006; 68: 629-31. [\[CrossRef\]](#)
2. Lo ANSM, Blom NA, Bokenkamp R, Ottenkamp J. Stenting of the vertical vein in obstructed total anomalous pulmonary venous return as rescue procedure in a neonate. *Catheter Cardiovasc Interv* 2006; 67: 668-70. [\[CrossRef\]](#)
3. Kobayashi D, Forbes TJ, Aggarwal S. Palliative stent placement in vertical vein in a 1.4 kg infant with obstructed supracardiac total anomalous pulmonary venous connection. *Catheter Cardiovasc Interv* 2013; 82: 574-80. [\[CrossRef\]](#)
4. Kyser JP, Bengur AR, Siwik ES. Preoperative palliation of newborn obstructed total anomalous pulmonary venous connection by endovascular stent placement. *Catheter Cardiovasc Interv* 2006; 67: 473-6. [\[CrossRef\]](#)
5. Padalino MA, Cavalli G, De Franceschi M, Mancuso D, Maschietto N, Vida V, et al. Surgical outcomes of total anomalous pulmonary venous connection repair: A 22-Year Experience. *J Card Surg* 2014; 29: 678-85. [\[CrossRef\]](#)
6. Yoshimura N, Fukahara K, Yamashita A, Doki Y, Takeuchi K, Higuma T, et al. Current topics in surgery for isolated total anomalous pulmonary venous connection. *Surg Today* 2014; 44: 2221-6. [\[CrossRef\]](#)

Address for Correspondence: Dr. İ. Cansaran Tanıdır,
İstanbul Mehmet Akif Ersoy Eğitim Araştırma Hastanesi
İstasyon Mah. Turgut Özal Bulvarı No:11
Küçükçekmece, İstanbul-Türkiye
Phone: +90 212 692 20 00
Fax: +90 212 471 94 94
E-mail: cansaran@yahoo.com



©Copyright 2015 by Turkish Society of Cardiology - Available online at www.anakarder.com
DOI:10.5152/akd.2015.5938