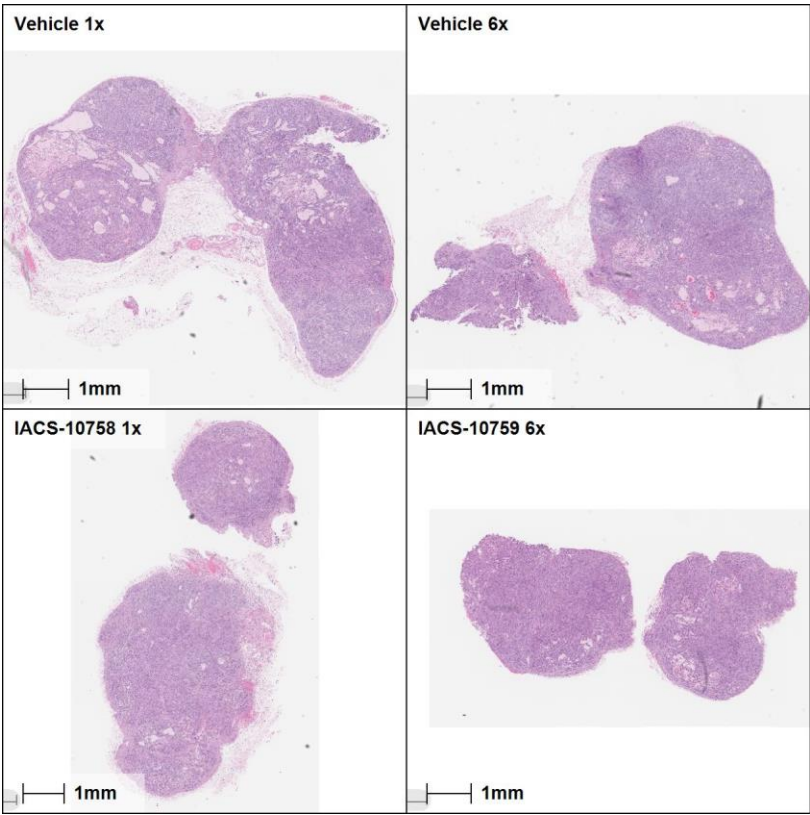


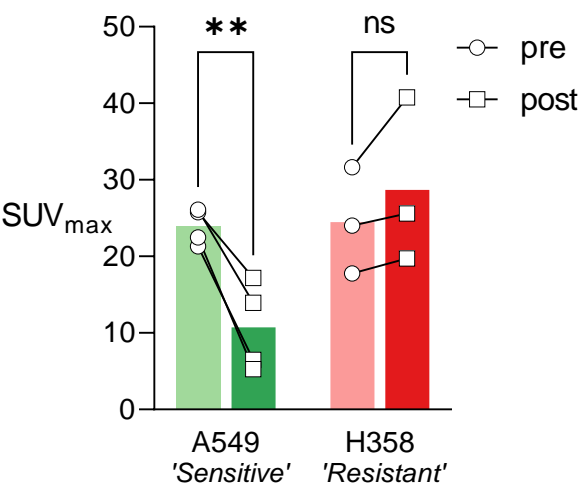
Supplementary Figure 1



Supplementary Figure 1.

Illustrative images showing H&E staining of tumour tissue fixed shortly after the completion of vehicle or IACS-10759 treatment, as stated on the label in the left-hand corner of the image (Vehicle_{1x}, IACS_{1x}: fixed 2 hours from the administration of a single dose; Vehicle_{6x}, IACS_{6x}: fixed 24 hours from the administration of the last one of six, once-daily doses).

Supplementary Figure 2



Supplementary Figure 2.

[¹⁸F]TFB PET imaging of sodium iodide symporter (NIS) expressing sensitive (A549-LN; n = 4) and resistant (H358-LN; n = 3) tumours at baseline and 24 hours later, immediately after oral administration of a single dose of 20mg/kg IACS-10759. Two-way, repeated measures ANOVA with Šídák's multiple comparisons analysis was performed to test statistical significance of the results. P value classifications are summarized as follows: **, P<(0.001–0.01). Each data point represents SUV_{max} calculated for a single tumour/animal and time-point.