

Spatial and temporal variations of nitrous oxide flux between coastal marsh and the atmosphere in the Yellow River estuary of China

Zhigao Sun · Lingling Wang · Xiaojie Mou ·
Huanhuan Jiang · Wanlong Sun

Received: 14 March 2013 / Accepted: 29 May 2013 / Published online: 21 June 2013
© The Author(s) 2013. This article is published with open access at Springerlink.com

Abstract To investigate the spatial and seasonal variations of nitrous oxide (N_2O) fluxes and understand the key controlling factors, we explored N_2O fluxes and environmental variables in high marsh (HM), middle marsh (MM), low marsh (LM), and mudflat (MF) in the Yellow River estuary throughout a year. Fluxes of N_2O differed significantly between sampling periods as well as between sampling positions. During all times of day and the seasons measured, N_2O fluxes ranged from -0.0051 to $0.0805 \text{ mg N}_2\text{O m}^{-2} \text{ h}^{-1}$, and high N_2O emissions occurred during spring ($0.0278 \text{ mg N}_2\text{O m}^{-2} \text{ h}^{-1}$) and winter ($0.0139 \text{ mg N}_2\text{O m}^{-2} \text{ h}^{-1}$) while low fluxes were observed during summer ($0.0065 \text{ mg N}_2\text{O m}^{-2} \text{ h}^{-1}$) and autumn ($0.0060 \text{ mg N}_2\text{O m}^{-2} \text{ h}^{-1}$). The annual average N_2O flux from the intertidal zone was $0.0117 \text{ mg N}_2\text{O m}^{-2} \text{ h}^{-1}$, and the cumulative N_2O emission throughout a year was $113.03 \text{ mg N}_2\text{O m}^{-2}$, indicating that coastal marsh acted as N_2O source. Over all seasons, N_2O fluxes from the four marshes were significantly different ($p < 0.05$), in the order of HM ($0.0256 \pm 0.0040 \text{ mg N}_2\text{O m}^{-2} \text{ h}^{-1}$) > MF

($0.0107 \pm 0.0027 \text{ mg N}_2\text{O m}^{-2} \text{ h}^{-1}$) > LM ($0.0073 \pm 0.0020 \text{ mg N}_2\text{O m}^{-2} \text{ h}^{-1}$) > MM ($0.0026 \pm 0.0011 \text{ mg N}_2\text{O m}^{-2} \text{ h}^{-1}$). Temporal variations of N_2O emissions were related to the vegetations (*Suaeda salsa*, *Phragmites australis*, and *Tamarix chinensis*) and the limited C and mineral N in soils during summer and autumn and the frequent freeze/thaw cycles in soils during spring and winter, while spatial variations were mainly affected by tidal fluctuation and plant composition at spatial scale. This study indicated the importance of seasonal N_2O contributions (particularly during non-growing season) to the estimation of local N_2O inventory, and highlighted both the large spatial variation of N_2O fluxes across the coastal marsh ($\text{CV} = 158.31\%$) and the potential effect of exogenous nitrogen loading to the Yellow River estuary on N_2O emission should be considered before the annual or local N_2O inventory was evaluated accurately.

Keywords Nitrous oxide (N_2O) · Spatial and temporal variations · Coastal marsh · Yellow River estuary

Responsible editor: Gerhard Lammel

Z. Sun (✉) · L. Wang · X. Mou · W. Sun
Key Laboratory of Coastal Zone Environmental Processes and Ecological Remediation, Yantai Institute of Coastal Zone Research (YIC), Chinese Academy of Sciences (CAS), Yantai, Shandong 264003, People's Republic of China
e-mail: zgsun@yic.ac.cn

Z. Sun · L. Wang · X. Mou · W. Sun
Shandong Provincial Key Laboratory of Coastal Zone Environmental Processes, YIC-CAS, Yantai, Shandong 264003, People's Republic of China

H. Jiang
Policy Research Center for Environment and Economy,
Ministry of Environmental Protection,
Beijing 100029, People's Republic of China

X. Mou · W. Sun
University of Chinese Academy of Sciences, Beijing 100049,
People's Republic of China

Introduction

Nitrous oxide (N_2O) is an important greenhouse gas (GHG) that has 298 times the global warming potential of CO_2 over a 100-year time period and has been recognized to contribute global warming by 5 % (Mosier 1998). N_2O has an atmospheric lifetime of 114 years (Mosier 1998) and also contribute to the depletion of ozone in the stratosphere (Crutzen and Ehhalt 1977). The globally averaged atmospheric N_2O concentration increased from 270 ± 7 ppb in pre-industrial times (before 1750) to 319 ± 0.12 ppb in 2005, and is increasing approximately 0.26 % per year (IPCC 2007). In 2010, the globally averaged N_2O concentration reached 323.2 ppb, which exceeded the highest annual mean abundance so far (World Meteorological Organization 2011). Emission of N_2O from various natural ecosystems has significant influences on global climate change since they account for 44–54 % of the

total N₂O emissions (9.6–10.8 Tg N₂O year⁻¹) (IPCC 2007). Tropical soil and wetlands play an important role in the global nitrogen (N) biogeochemical cycles and are considered significant natural sources of N₂O, contributing approximately 22–27 % towards this inventory (Whalen 2005).

Coastal marsh is characterized by high temporal and spatial variation involved with topographic feature, environmental factors, and astronomic tidal fluctuation, and is very sensitive to global climate changes and human activities. The intertidal zone between terrestrial and coastal ecosystems may represent a high dynamic interface of intense material processing and transport, with potentially high GHG emission (Hirota et al. 2007). Considerable efforts have been made in the past two decades to quantify the N₂O fluxes in different coastal ecosystems, especially in estuarine salt marshes (Shingo et al. 2000; Magalhães et al. 2007), mangrove swamps (Muñoz-Hincapié et al. 2002; Allen et al. 2007; Ganguly et al. 2008), coastal lagoons (Gregorich et al. 2006; Hirota et al. 2007), and coastal marshes (Amouroux et al. 2002; Moseman-Valtierra et al. 2011). In China, the studies on N₂O emission from coastal marshes started quite late and the related research mainly focused on the coastal tundra marshes in Antarctica (Sun et al. 2002; Zhu et al. 2008) and the coastal marshes in the Yangtze River estuary (Yang et al. 2006; Wang et al. 2006, 2007a,b; Wang et al. 2010a) and the Min River estuary (Yang et al. 2012; Mou et al. 2012; Zhang et al. 2012, 2013), while information on the coastal marshes in northern estuaries (such as Liao River estuary and Yellow River estuary) was scarce.

The Yellow River is well-known as a sediment-laden river. Every year, approximately 1.05×10^7 tons of sediment is carried to the estuary and deposited in the slow flowing landform, resulting in vast floodplain and special marsh landscape (Xu et al. 2002; Cui et al. 2009). Sediment deposition is an important process for the formation and development of coastal marshes in the Yellow River Delta. The deposition rate of sediment in the Yellow River not only affects the formation rate of coastal marsh, but also, to some extent, influences the water or salinity gradient and the succession of vegetation from the land to the sea. In recent years, the N and organic matter (OM) loadings of the Yellow River estuary have significantly increased due to the effects of human activities, and approximately 4.22×10^4 tons of nutrients and 4.39×10^5 tons of OM were discharged into Bohai Sea every year (State Oceanic Administration of China 2013). Increases in N and OM loadings to estuarine and coastal marshes can stimulate microbial processes and associated GHGs emission (Seitzinger and Kroeze 1998; Purvaja and Ramesh 2001). However, information on N₂O emission from the coastal marsh in the Yellow River estuary is very limited, and the potential effects of exogenous N loading on N₂O emission remains poorly discussed.

In this paper, we investigated N₂O fluxes and environmental variables in the coastal marsh of the Yellow River

estuary throughout a year (during 2010/2011). The aims of this study are: (1) to determine the spatial and temporal variations of N₂O fluxes and the annual average N₂O emission from the coastal marsh, and (2) to investigate the key factors influencing N₂O variations and assess the potential effects of exogenous N loading on N₂O emission.

Materials and methods

Study site

The study was carried out in the coastal marsh of the Yellow River estuary, which is located in the Nature Reserve of Yellow River Delta (37°35'N–38°12'N, 118°33'E–119°20'E) in Dongying City, Shandong Province, China. The nature reserve is of typical continental monsoon climate with distinctive seasons. The annual average temperature is 12.1 °C, and the average temperatures in spring, summer, autumn, and winter are 10.7, 27.3, 13.1, and –5.2 °C, respectively. The temperature changes significantly during early spring and winter, and the freeze/thaw cycles frequently occur in topsoil in majority days, with the frozen depth ranged from 0 to 15 cm. The annual evaporation is 1,962 mm, the annual precipitation is 551.6 mm, with about 70 % of precipitation occurring between June and August.

With an area of 964.8 km², coastal marsh is the main type of marsh in the Yellow River Delta and accounts for 63.06 % of total area (Cui et al. 2009). In the intertidal zone, natural geomorphology and depositing zones are distinct, and high marsh (HM), middle marsh (MM), low marsh (LM), and mudflat (MF) develop from the land to the sea. The soil in the intertidal zone is dominated by salt soil. *Suaeda salsa*, an annual C₃ plant, is the most prevalent halophytes in the coastal marshes of the Yellow River estuary (Tian et al. 2005). Due to the differences of water and salinity conditions, three *S. salsa* phenotypes are generally formed in HM, MM, and LM, respectively. The HM is predominated by *S. salsa* (>90%) and *Phragmites australis* (<10%), MM is predominated by *S. salsa* (>95%) and *Tamarix chinensis* (<5%), while LM is pure *S. salsa* community (100%) (Mou 2010). The tide in the intertidal zone of the Yellow River estuary is irregular semidiurnal tide (twice a day) and the mean tidal range is 0.73–1.77 m (Li et al. 1991).

Experimental design

Four sampling positrons were laid in HM, MM, LM, and MF in the intertidal zone of the Yellow River estuary. N₂O fluxes across the sediment–atmosphere interface were measured by using opaque, static, manual stainless steel chambers, and gas chromatography techniques. The chamber (50×50×50 cm) and its base (50×50×20 cm) were made from 0.4-mm thickness stainless steel. Inside the chamber, an electric fan was fixed to stir the air, a thermometer sensor was installed to

measure temperature, a trinal-venthole was fixed to collect gas sample, and a balance pipe was used to equalize the air pressure between the inside and the outside of the chamber. Outside of the chamber was covered with 2 cm thickness white foam to reduce the impact of direct radiative heating during sampling, which generally caused very little change in temperature between the inside and the outside of the chamber (Teiter and Mander 2005; SØvik and KlØve 2007; Song et al. 2008; Jiang et al. 2010). All the connections were made “air tight” and sealed by silicon rubber. The stainless steel bases enclosed an area of 0.25 m² and were inserted into the ground to a depth of 20 cm below the soil on August 2010. During observations, the chamber was placed over the base filled with water in the groove to prevent leakage, and the plant was covered within the chamber.

Sampling campaigns were undertaken in September, October, November, and December in 2010, and April, May, June, and July in 2011 (the sampling in January, February, and March were canceled due to the frequent effects of storm tide and bad weather and that in August was canceled due to the damage of most chambers and instruments). Each measurement campaign consisted of 12 chambers set up at above-mentioned four positions (three chambers per site). On each sampling date, measurements were conducted at 0700, 0930, 1200, 1430, and 1700 hours (represented different times of day). About 60 ml gas sample inside the chamber was collected every 20 min over a 60-min period by using 100-ml syringe (total of four samples), and then stored in pre-evacuated gas sampling bags (100 ml). Since the tide in the Yellow River estuary is irregular semi-diurnal tide, the sampling campaigns in the LM and MF were sometimes affected by tidal inundation. The sampling campaigns in the LM and MF in May and the MF in June were not carried out due to the great influence of tide.

N₂O concentrations of gas samples were analyzed within 36 h using gas chromatography (Agilent 7890A) equipped with ECD. The N₂O portion was separated using a 1-m stainless steel column with an inner diameter 2-mm Porapak Q (80/100 mesh), and was measured using the ECD, which was set at 330 °C. The ECD also used high-pure nitrogen as a carrier gas, a flow rate of 35 ml min⁻¹. The column temperatures were maintained at 55 °C for all separations. Gas concentrations were quantified by comparing peak areas of samples against standards run every eight samples, ensuring each sample run maintained RSD below 6 %.

N₂O fluxes were calculated according to the following equation:

$$J = \frac{dc}{dt} \times \frac{M}{V_0} \times \frac{P}{P_0} \times \frac{T_0}{T} \times H$$

where dc/dt is the slope of the gas concentration curve variation along with time. M is the mole mass of each gas.

P is the atmospheric pressure in the sampling site. T is the absolute temperature during sampling. V_0 , T_0 , P_0 are the gas mole volume, air absolute temperature, and atmospheric pressure under standard conditions, respectively. H is the height of chamber above the ground/water surface.

The annual average N₂O flux was calculated by the data determined in the eight sampling months (covered four seasons). The N₂O emission/absorption (milligram of N₂O per meter squared) per sampling month was calculated by the average value (milligram of N₂O per meter squared per hour) of all sampling data and the time (hour) in each month. The N₂O emissions/absorptions in January and February were estimated by the average value in winter (December), and those in March and August were estimated by the average values determined in spring (April and May) and summer (June and July), respectively. The cumulative N₂O emission/absorption throughout a year was estimated by the values in 12 months.

Environmental measurements

Air temperature and soil temperatures (0, 5, 10, and 15 cm) were measured in each position during gas sampling. Soil volumetric moisture and electrical conductivity (EC) in 0–5 and 5–10 cm depths were determined in situ by high-precision moisture measuring instrument (AZS-2) and soil and solution EC meter (Field Scout), respectively. Soil moisture and EC were not determined in December 2010 since the topsoil was frozen. Because the measurements in LM and MF in September 2010 were partly and slightly affected by tide (from 1200 to 1700 hours), the flooding depths were measured to discuss the effects of tidal inundation on N₂O emission. On each sampling date, two soil samples per layer (0–10, 10–20 cm) were taken in each site for analyzing TC and TN contents by element analyzer (Elementar Vario Micro, German) and NH₄⁺-N and NO₃⁻-N contents by sequence flow analyzer (San⁺⁺ SKALAR, Netherlands).

Statistical analysis

The Shapiro–Wilk test was applied to identify the normality of data before the related statistical analyses were conducted. The results were presented as means of the replications, with standard error. Statistical significance of differences at $p < 0.05$ between samples was analyzed using analysis of variance (ANOVA). Multiple comparison of samples was undertaken by Tukey’s test with a significance level of $p = 0.05$. Correlation analyses and stepwise linear regression analyses were used to examine the relationship between fluxes and the measured environmental variables. In all tests, differences were considered significantly only if $p < 0.05$.

Results

Environmental variables in coastal marsh

Similar variations of air temperature and ground temperature in the four marshes were observed over all sampling period (Fig. 1a). Air temperature did not show significant difference among the four marshes ($p > 0.05$) and the means were 19.69, 17.90, 15.74, and 15.00 °C, respectively. Ground temperatures generally decreased with increasing soil depth, but no significant differences were found within the four marshes ($p > 0.05$). Dissimilar variations of soil moisture and EC in the four marshes were observed (Fig. 1b, c). With increasing depth, soil moisture increased while EC generally decreased. Soil moisture did not show significant differences among the four marshes ($p > 0.05$), while significant differences of EC were observed ($p < 0.05$). Seasonal dynamics of soil substrate in the four marshes were observed over all sampling period (Fig. 2). TC, TN, and $\text{NH}_4^+\text{-N}$ in the surface and subsurface soil of MF were generally higher than those in other marshes (Fig. 2a–c). Both TC in surface and subsurface soil had significant differences within the four marshes ($p < 0.05$), while only TN in subsurface soil showed significant difference ($p < 0.01$). Both $\text{NH}_4^+\text{-N}$ and $\text{NO}_3^-\text{-N}$ in soil were not significantly different among the four marshes ($p > 0.05$).

Spatial variations of N_2O fluxes

Variation of N_2O fluxes in spring

N_2O fluxes in spring averaged between -0.0102 and $0.0982 \text{ mg N}_2\text{O m}^{-2} \text{ h}^{-1}$ and differed significantly among the four marshes ($p < 0.01$) (Fig. 3). With the exception of MM, the other sites were found to release N_2O during all times of day sampled. In HM, N_2O fluxes in April and May were similar except for 1700 hours sampling, and significantly higher emission occurred in April compared to May ($p < 0.01$). N_2O fluxes from MM in April and May were opposite except for 1200 hours sampling, and the ranges were -0.0065 – 0.0131 and -0.0102 – $0.0081 \text{ mg N}_2\text{O m}^{-2} \text{ h}^{-1}$, respectively. N_2O fluxes from LM in April had no significant variation before 1430 hours and a significant peak occurred in 1700 hours. In MF, N_2O fluxes in April ranged from 0.0285 to $0.0512 \text{ mg N}_2\text{O m}^{-2} \text{ h}^{-1}$ and the maximum occurred in 1200 hours. The mean N_2O fluxes from HM, MM, LM, and MF in spring were 0.0582 , 0.0026 , 0.0069 , and $0.0384 \text{ mg N}_2\text{O m}^{-2} \text{ h}^{-1}$, and the cumulative N_2O emissions were 128.02 , 5.75 , 15.19 , and $84.74 \text{ mg N}_2\text{O m}^{-2}$, respectively, indicating that coastal marsh represented N_2O source.

Variation of N_2O fluxes in summer

N_2O fluxes in summer ranged from -0.0147 to $0.0262 \text{ mg N}_2\text{O m}^{-2} \text{ h}^{-1}$ and differed significantly among the four marshes in June ($p < 0.05$) (Fig. 3). With the exception of HM that were found to release N_2O during all times of day sampled, the other sites showed consumptions in some sampling times. N_2O fluxes from HM in June and July were 0.0085 – 0.0262 and 0.0117 – $0.0206 \text{ mg N}_2\text{O m}^{-2} \text{ h}^{-1}$, respectively, and no significant difference was found between them ($p > 0.05$). In MM, N_2O fluxes in June and July were significantly different ($p < 0.05$) and the means were -0.0051 and $0.0052 \text{ mg N}_2\text{O m}^{-2} \text{ h}^{-1}$, respectively. Although N_2O fluxes from LM in June and July were opposite except for 1430-hours sampling, they had no significant difference ($p > 0.05$). The MF was found to release N_2O before July 1430 hours sampling and significant consumption occurred in 1700-hours. The average N_2O fluxes from HM, MM, LM, and MF in summer were 0.0165 , 0.00002 , 0.0035 , and $0.0055 \text{ mg N}_2\text{O m}^{-2} \text{ h}^{-1}$, and the cumulative N_2O emissions were 36.54 , 0.17 , 7.92 , and $12.14 \text{ mg N}_2\text{O m}^{-2}$, respectively, indicating that coastal marsh acted as weak N_2O source.

Variation of N_2O fluxes in autumn

N_2O fluxes in autumn averaged between -0.0092 and $0.0312 \text{ mg N}_2\text{O m}^{-2} \text{ h}^{-1}$ and differed significantly among the four marshes in October ($p < 0.01$) (Fig. 3). In HM, with the exception of September 0700 hours sampling, the other times were found to release N_2O . Significantly higher emission occurred in October compared to September and November ($p < 0.01$). N_2O fluxes from MM in autumn showed both emission and consumption, but no significant difference was found among sampling periods ($p > 0.05$). N_2O fluxes from LM in September and October were opposite except for 0700 and 0930 hours sampling. N_2O fluxes from MF in September and November were similar, but they had significant difference ($p < 0.01$). The LM in November and MF in October were found to release N_2O over all sampling times, with the maximums occurred in 1200 and 0700 hours, respectively. The mean N_2O fluxes from HM, MM, LM, and MF in autumn were 0.0118 , 0.0031 , 0.0038 , and $0.0053 \text{ mg N}_2\text{O m}^{-2} \text{ h}^{-1}$, and the cumulative N_2O emissions were 26.01 , 6.90 , 8.16 , and $11.70 \text{ mg N}_2\text{O m}^{-2}$, respectively, indicating that coastal marsh represented weak N_2O source.

Variation of N_2O fluxes in winter

N_2O fluxes in winter ranged from -0.0114 to $0.0442 \text{ mg N}_2\text{O m}^{-2} \text{ h}^{-1}$ and differed significantly among the four marshes ($p < 0.01$) (Fig. 3). The average N_2O fluxes from HM, MM, LM, and MF were 0.0195 , 0.0059 , 0.0257 , and

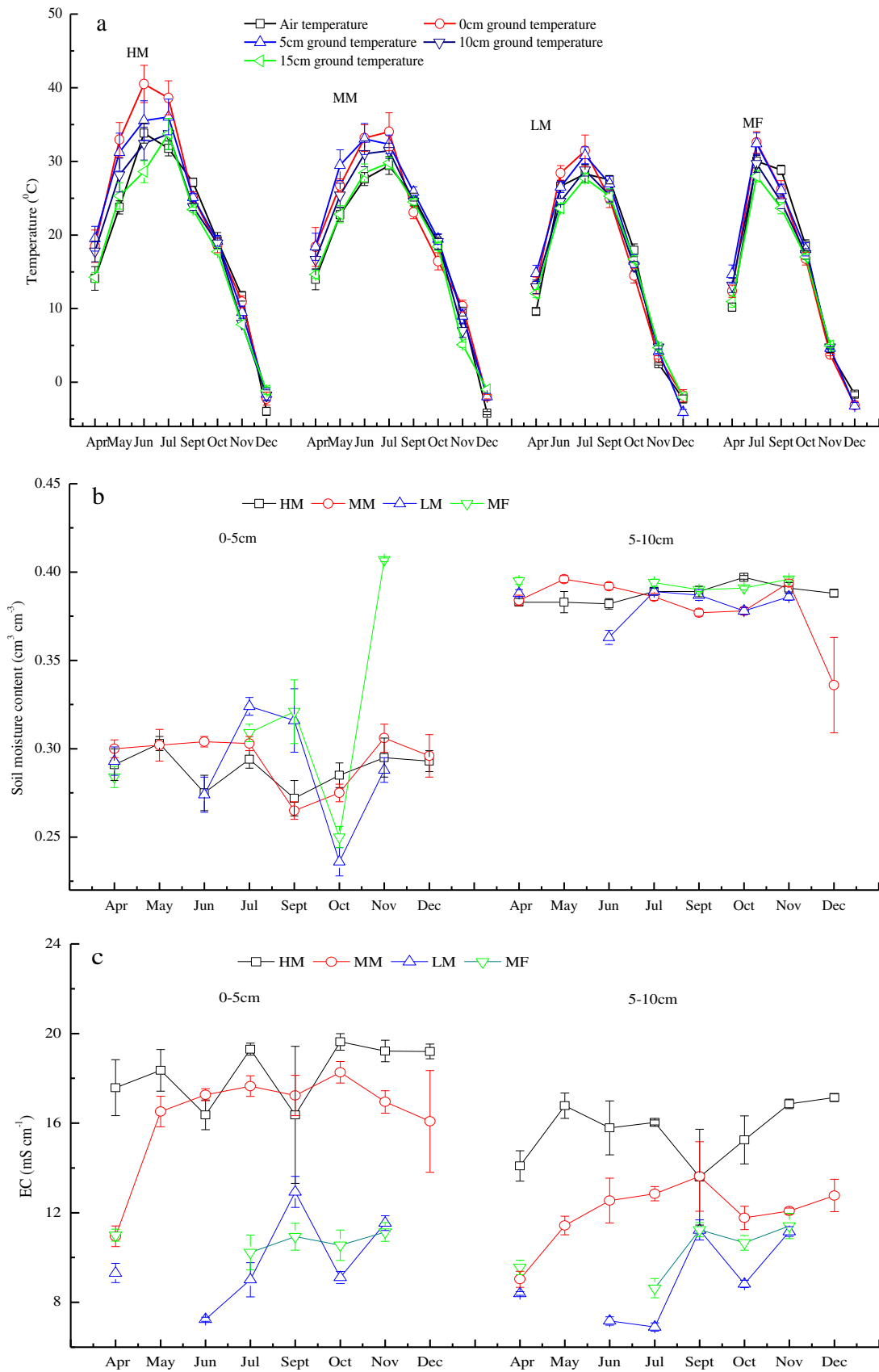


Fig. 1 Variations of environmental temperatures (a), soil moisture content (b), and electrical conductivity (EC) (c) in high marsh (HM), middle marsh (MM), low marsh (LM), and mudflat (MF)

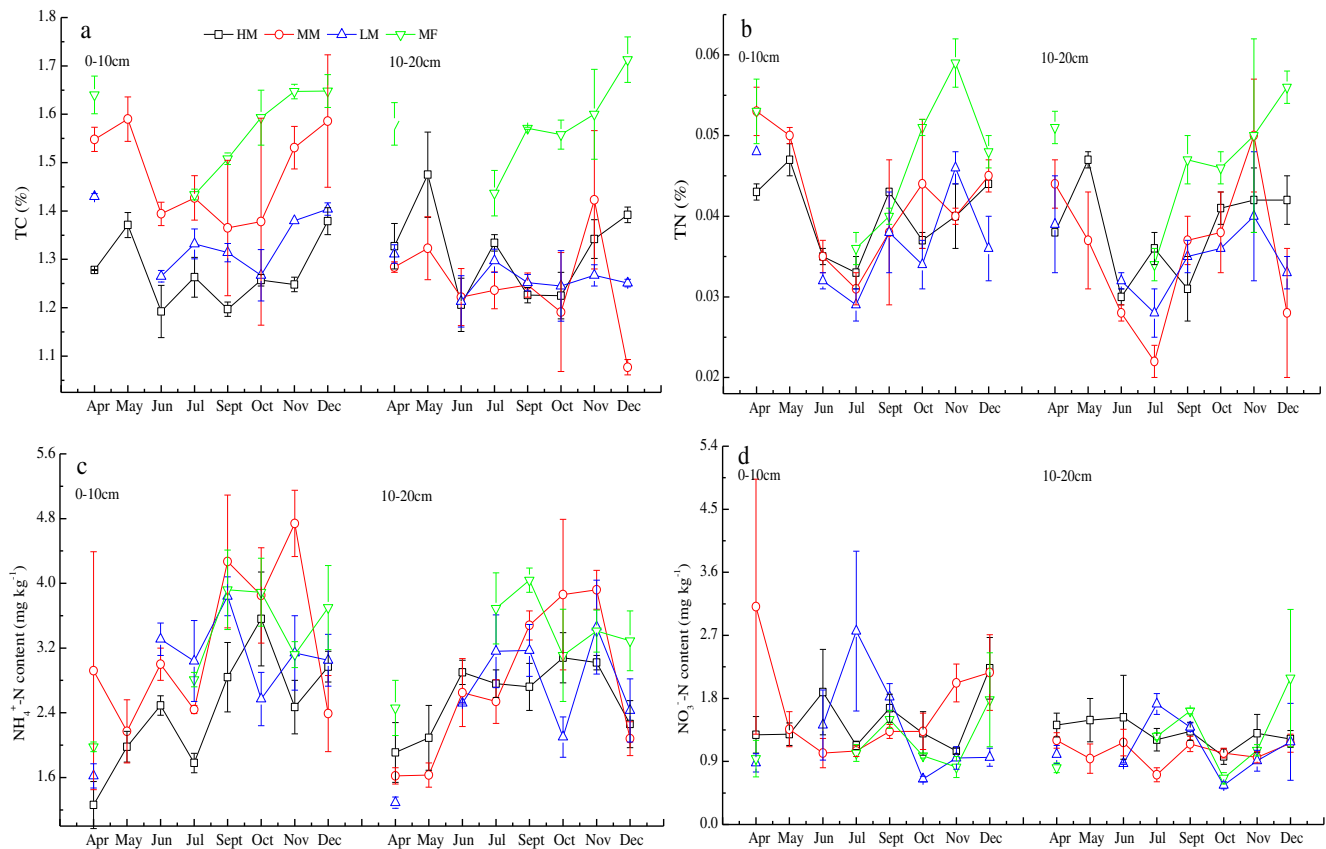


Fig. 2 Variations of TC (a), TN (b), $\text{NH}_4^+\text{-N}$ (c), and $\text{NO}_3^-\text{-N}$ (d) contents in high marsh (HM), middle marsh (MM), low marsh (LM), and mudflat (MF) soils

$0.0047 \text{ mg N}_2\text{O m}^{-2} \text{ h}^{-1}$, and the cumulative N_2O emissions were 42.12, 12.79, 55.47, and $10.11 \text{ mg N}_2\text{O m}^{-2}$, respectively, indicating that coastal marsh acted as N_2O source. Significantly higher emissions were observed in HM and LM compared to MM and MF during all times of day sampled ($p < 0.05$).

Temporal variations of N_2O fluxes

Significant temporal variations of N_2O fluxes throughout a year were observed in HM, LM, and MF ($p < 0.01$) (Fig. 4). During

all times of day and the seasons measured, N_2O fluxes from the intertidal zone averaged between -0.0051 and $0.0805 \text{ mg N}_2\text{O m}^{-2} \text{ h}^{-1}$, and the annual average N_2O flux was $0.0117 \text{ mg N}_2\text{O m}^{-2} \text{ h}^{-1}$. The maximum and minimum were observed in April (in HM) and June (in MM), respectively. High N_2O emissions generally occurred during spring ($0.0278 \text{ mg N}_2\text{O m}^{-2} \text{ h}^{-1}$) and winter ($0.0139 \text{ mg N}_2\text{O m}^{-2} \text{ h}^{-1}$) while low fluxes were observed during summer ($0.0065 \text{ mg N}_2\text{O m}^{-2} \text{ h}^{-1}$) and autumn ($0.0060 \text{ mg N}_2\text{O m}^{-2} \text{ h}^{-1}$) (Fig. 4). Over all seasons, N_2O fluxes from the four marshes were significantly different ($p < 0.05$), in the order of HM ($0.0256 \pm 0.0040 \text{ mg N}_2\text{O}$

Fig. 3 Spatial variations of N_2O fluxes (milligram of N_2O per meter squared per hour) from high marsh (HM), middle marsh (MM), low marsh (LM), and mudflat (MF) in spring (April and May), summer (June and July), autumn (September, October, and November), and winter (December)

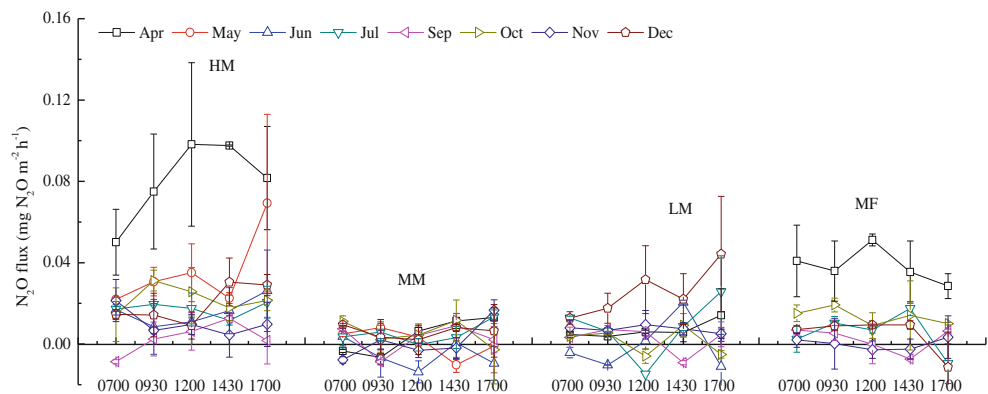
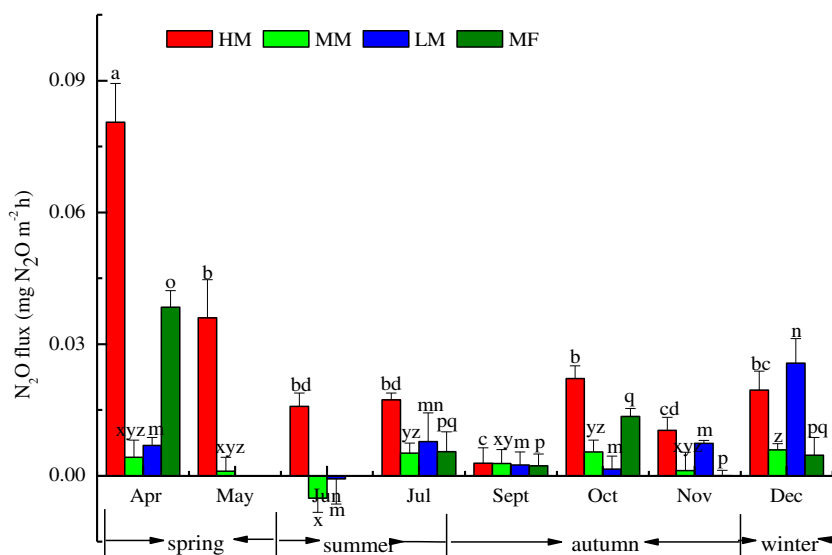


Fig. 4 Temporal variations of N₂O fluxes (milligram of N₂O per meter squared per hour) from high marsh (HM), middle marsh (MM), low marsh (LM), and mudflat (MF). Bars with different letters (a, b, c, d for HM; x, y for MM; m, n for LM; o, p, q for MF) are significantly different at the level of $p < 0.05$; bars with same letters are not significantly different at the level of $p < 0.05$



$\text{m}^{-2} \text{h}^{-1}$) > MF ($0.0107 \pm 0.0027 \text{ mg N}_2\text{O m}^{-2} \text{h}^{-1}$) > LM ($0.0073 \pm 0.0020 \text{ mg N}_2\text{O m}^{-2} \text{h}^{-1}$) > MM ($0.0026 \pm 0.0011 \text{ mg N}_2\text{O m}^{-2} \text{h}^{-1}$). The cumulative N₂O emission from the intertidal zone throughout a year was $113.03 \text{ mg N}_2\text{O m}^{-2}$, indicating that coastal marsh acted as N₂O source. Comparatively, the N₂O emissions measured during spring and winter contributed 49.65 and 26.65 % of the total emission, respectively, which were higher than the contributions measured during summer (12.03 %) and autumn (11.67 %).

Relationships between environmental variables and N₂O fluxes

Most correlations between N₂O fluxes and temperatures in different marshes were not significant ($p > 0.05$; Table 1). Although both positive and negative impacts of soil moisture (or EC) on N₂O emissions were observed within the four marshes, only the correlation between soil moisture (5–10 cm) and N₂O fluxes in LM was significant ($p < 0.05$; Table 2). Lacks of correlations between N₂O fluxes and substrate variables were observed ($p > 0.05$) except the correlations occurred in subsurface soil of HM and MF ($p < 0.05$; Table 3). The environmental variables determined in the four coastal marshes were all excluded in the stepwise liner regression. $\text{NH}_4^+\text{-N}$ content (X_1) and TC content (X_2) were the dominant factors that controlled the N₂O emissions (Y) in HM ($Y = 0.129 - 0.040X_1$, $R^2 = 0.539$, $p = 0.038$) and LM ($Y = -0.109 + 0.090X_2$, $R^2 = 0.798$, $p = 0.016$), respectively, while in MM and MF, the environmental variables determined during sampling periods were all excluded, indicating that N₂O fluxes were controlled by multiple site-specific factors.

Discussion

Temporal variations of N₂O fluxes

Many studies have demonstrated that the seasonal patterns of N₂O fluxes were generally governed by seasonal variability in temperatures since it influenced water availability, production of substrate precursors, and microbial activity (Whalen 2005; Zhu et al. 2008). However, we have drawn a different result. Although significant temporal variations in N₂O fluxes from the coastal marshes in the Yellow River estuary were observed, the influence of seasonal variability in temperatures on N₂O emissions seemed not significant (Figs. 1a and 4). Moreover, most correlations between N₂O fluxes and temperatures in different marshes were not significant ($p > 0.05$) (Table 1). These indicated that the influences of temperatures on N₂O emissions might be covered by other biotic/abiotic parameters (such as vegetation, soil moisture, and substrate) in most sampling periods. Because the environmental variables determined in coastal marsh were all excluded in the stepwise liner regression, we considered that N₂O emissions in different seasons might be controlled by the interactions of multiple controlling factors.

In this paper, we observed that N₂O emissions in spring, summer, autumn, and winter were 0.0278 , 0.0065 , 0.0060 , and $0.0139 \text{ mg N}_2\text{O m}^{-2} \text{h}^{-1}$, respectively (Fig. 4), and low values occurred during summer and autumn. The result was similar with Allen et al. (2007) but was different with Wang et al. (2007a) and Søvik and Kløve (2007). There were two possible reasons. Firstly, the presence of vegetations (*P. australis*, *S. salsa*, and *T. chinensis*) across the coastal marsh might have significant effects on the low N₂O emissions during the growing season. Many studies have demonstrated that, under flooding or anaerobic conditions, the three marsh

Table 1 Pearson correlation analysis between N₂O fluxes and temperatures

Month	Air temperature				0-cm ground temperature				5-cm ground temperature				10-cm ground temperature				15-cm ground temperature			
	HM	MM	LM	MF	HM	MM	LM	MF	HM	MM	LM	MF	HM	MM	LM	MF	HM	MM	LM	MF
April	0.598	-0.062	0.035	0.529	0.783	0.345	-0.288	0.131	0.936*	0.743	0.292	-0.101	0.800	0.885*	0.548	-0.232	0.719	0.927*	0.587	-0.318
May	0.118	-0.179	-	0.329	0.251	-	0.462	-	0.469	-0.632	-	-	0.461	-0.762	-	0.573	-0.783	-	-	-
June	0.285	-0.562	0.396	-	-0.100	-0.503	0.480	-	0.336	-0.492	0.530	-	0.461	-0.441	0.333	-	0.619	-0.400	0.456	-
July	-0.554	-0.626	-0.848	0.218	-0.453	-0.534	-0.826	0.354	-0.287	-0.545	-0.915*	0.116	-0.214	-0.297	-0.506	-0.066	-0.214	0.090	-0.184	-0.228
September	0.948*	0.062	0.040	-0.014	0.785*	0.016	0.387	0.363	0.878*	0.094	-0.209	-0.449	0.723	0.238	-0.573	-0.629	0.616	0.372	-0.705	-0.813
October	0.314	0.391	0.385	-0.176	0.514	0.350	0.185	-0.079	0.530	-0.153	0.255	-0.295	0.474	-0.238	0.002	-0.351	0.559	-0.448	-0.076	-0.192
November	-0.103	0.181	-0.435	-0.682	0.048	-0.180	0.367	-0.364	0.204	0.385	-0.047	-0.776	0.496	0.605	-0.173	-0.791	0.583	0.731	-0.173	-0.061
December	0.343	0.165	0.290	0.444	-0.108	-0.209	0.488	0.344	0.413	-0.554	0.721	-0.468	0.733	-	-	-	0.808	-	-	-

Pair sample size, $n=8$ for air temperature and ground temperatures (0, 5, 10, and 15 cm) in HM; $n=8$ for air temperature and 0-, 5-, and 15-cm ground temperatures, and $n=7$ for 10-cm ground temperature in MM; $n=7$ for air temperature and ground temperatures (0, 5, 10, and 15 cm) in LM; $n=6$ for air temperature and 0- and 5-cm ground temperatures, and $n=5$ for 10- and 15-cm ground temperatures in MF

HM high marsh, MM middle marsh, LM low marsh, MF mudflat

* $p=0.05$ correlations are significant

Table 2 Pearson correlation analysis between N₂O fluxes and soil moisture or electrical conductivity (EC)

Sites	Soil moisture		Electrical conductivity (EC)	
	0–5 cm	5–10 cm	0–5 cm	5–10 cm
HM	0.296	-0.419	-0.053	-0.321
MM	-0.382	-0.532	-0.192	-0.049
LM	0.577	0.839*	0.329	0.135
MF	-0.605	0.165	0.153	-0.407

Pair sample size, $n=8$ for soil moisture and EC in 0–5 and 5–10 cm depths in HM and MM; $n=6$ for soil moisture and EC in 0–5 and 5–10 cm depths in LM; $n=5$ for soil moisture and EC in 0–5 and 5–10 cm depths in MF

HM high marsh, MM middle marsh, LM low marsh, MF mudflat

* $p=0.05$ correlations are significant

plants could transport oxygen from aboveground parts to roots by aerenchyma (Han et al. 2005; Ling et al. 2008; Kong et al. 2008; Ge and Zhang 2011), which generally formed oxidizing microenvironment around rhizosphere soil (Kong et al. 2008). Moreover, the roots of the three plants could excrete some small molecular compounds (glucide, organic acid, and amino acid), which caused the microorganism amount and microbial activity in rhizosphere soil to be much higher than those in non-rhizosphere soil (Ling et al. 2008; Cheng 2009; Wang et al. 2010b; Ge and Zhang 2011). These indicated that although the coastal marshes were frequently influenced by tidal inundation, the nitrification–denitrification rate still could be accelerated by the three plants since the soil microbes in rhizosphere were generally supplied with available C and N and proper amount of oxygen. Thus, N₂O, to a great extent, was reduced to N₂ by denitrification regardless of whether N₂O was produced by nitrification or denitrification or both, which resulted in the great decrease of N₂O emissions. Secondly, as mentioned before, N₂O production was through nitrification and denitrification, in which microorganism used the C and mineral N (NH₄⁺-N and NO₃⁻-N) as substrates (Conrad 1996). The low N₂O emissions in summer might also be due to the limited C and mineral N in the soils caused by low mineralization rates of organic C and N. As shown in Fig. 2, compared to other seasons, TC and TN in different coastal marsh soils (0–10, 10–20 cm) were lower in summer and NH₄⁺-N were lower during spring and summer, indicating that the shortage of C and mineral N during summer was unfavorable for N₂O production. Chapuis-lardy et al. (2007) also pointed out that N₂O production seemed to be suppressed by low mineral N and high moisture contents in soil from analysis of a large number of literatures. The weak N₂O emissions in summer were probably because that the mineral N was almost used up by plants. This speculation could be supported by the evidence that the biggest biomass

Table 3 Pearson correlation analysis between N₂O fluxes and soil substrate

Sites	TC		TN		NH ₄ ⁺ -N		NO ₃ ⁻ -N	
	0–10 cm	10–20 cm	0–10 cm	10–20 cm	0–10 cm	10–20 cm	0–10 cm	10–20 cm
HM	0.292	0.250	0.317	0.232	-0.611	-0.734*	-0.211	0.219
MM	0.198	-0.310	0.230	-0.020	-0.079	-0.059	0.369	-0.194
LM	0.673	0.194	0.078	-0.120	-0.056	-0.028	-0.125	0.281
MF	0.298	-0.293	0.251	0.019	-0.700	-0.851*	-0.316	-0.515

Pair sample size, *n*=8 for TC, TN, NH₄-N, and NO₃⁻-N in 0–10 and 10–20 depths in HM and MM; *n*=7 for TC, TN, NH₄-N, and NO₃⁻-N in 0–10 and 10–20 depths in LM; *n*=6 for TC, TN, NH₄-N, and NO₃⁻-N in 0–10 and 10–20 depths in MF

HM high marsh, MM middle marsh, LM low marsh, MF mudflat

**p*=0.05 correlations are significant

accumulation rate (Mou et al. 2010) coincided with the lowest level of C and mineral N in the soils (Fig. 2) at this period. This study also showed that high N₂O emissions occurred during spring and winter (Fig. 4). Many studies have demonstrated that, in the mid-high latitude and high altitude regions, freeze/thaw cycle occurred in late autumn, winter, or early spring was a very important process to increase N₂O production and emission since it could affect soil physical and biological properties greatly (Teepe et al. 2001; Song et al. 2008). Because the coastal marsh of the Yellow River estuary located in the mid-latitude region (37°35'N~38°12'N) and the freeze/thaw cycles frequently occurred in topsoil in majority days during spring and winter (frozen depth, 0~15 cm), high N₂O emissions might be attributed to the frequent freeze/thaw cycles. For one thing, frequent freeze/thaw cycles destroyed the size and stability of soil aggregate (van Bochove et al. 2000), released abundant bioavailable C and N (Ludwig et al. 2006), and altered the course and intensity of soil N transformation (Jarvis et al. 1996), which enhanced the denitrification and N₂O emission (Priemé and Christensen 2001). For another, since the frozen water film on the soil matrix represented a diffusion barrier which reduced oxygen supply to the microorganisms and partly prevented the release of the N₂O (Teepe et al. 2001), high emissions occurred due to the quick release of N₂O trapped by ice layer and/or denitrification during frequent freeze/thaw cycles (Goodroad and Keeney 1984; Teepe et al. 2001). Similar results were drawn by Zhang et al. (2005) and Jiang et al. (2010) who found significant N₂O emissions from freshwater marsh in the Sanjiang Plain and Alpine meadow in the Qinghai–Tibetan Plateau during the freeze/thaw cycle as the temperature increased.

In this study, the N₂O emission per sampling month was calculated by the average value and the time in each month and the emissions in absent months were estimated by the average values in the corresponding seasons. Similar method was adopted in some studies to estimate the N₂O emissions in absent months. Hao et al. (2007) studied the effects of freshwater marshes (*Carex lasiocapa* marsh and *Deyeuxia*

angustifolia marsh) reclamation on N₂O fluxes and estimated the emission in absent month (February) by the average value in winter (December and January). Sun et al. (2009) investigated the N₂O fluxes from *Calamagrostis angustifolia* marsh in the Sanjiang Plain and estimated the emissions in absent months (February and October) by the average values in winter (December and January) and autumn (September and November), respectively. Since the measurements in this study covered four seasons [spring (April and May), summer (June and July), autumn (September, October, and November), and winter (December)], we considered that based on the average values in the corresponding seasons, the extrapolation of N₂O emissions in absent months, to a great extent, was valid as the local N₂O inventory throughout a year was assessed roughly. Although only the roughly accumulated N₂O emission was given in our study, considering it was estimated for the first time, it still would provide valuable information on understanding the N₂O inventory in the coastal marsh of the Yellow River estuary. Overall, across all the seasons sampled, the coastal marsh was a net source of N₂O (113.03 mg N₂O m⁻² year⁻¹) and the N₂O emissions measured during non-growing season (spring and winter) comprised the principal part to the total emission (76.30 %), indicated that the importance of seasonal N₂O contributions (particularly during non-growing season) to the estimation of local N₂O inventory should be paid more attentions. In the following studies, in order to assess the regional budget of N₂O emissions precisely, measurements should be conducted at all months and the sampling frequency should be increased.

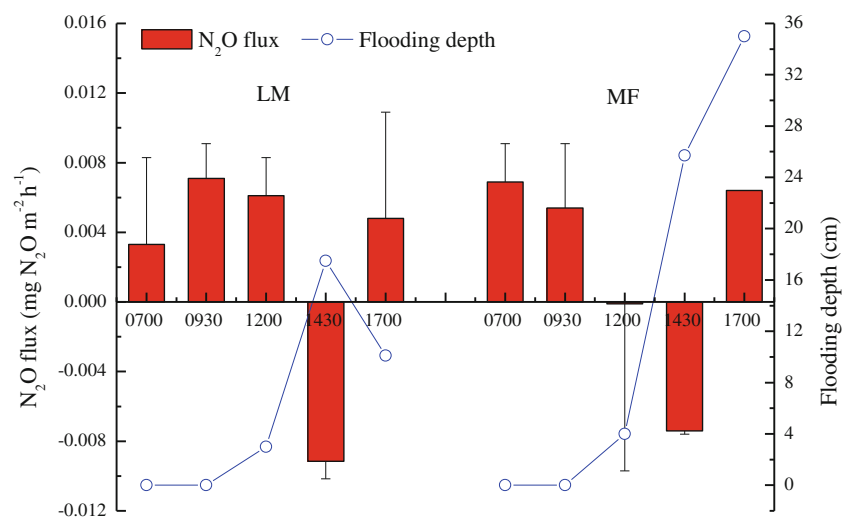
Spatial variations of N₂O fluxes

During all times of day and the seasons measured, we found that the physical and chemical parameters of soil differed in their magnitude among the four marshes, and significant differences in TC, TN, and EC in soil were observed (*p*<0.05). Such differences within the four marshes would be due to the site-specific conditions (such as topography, slope, hydrology, and species composition) which influence the magnitudes and

variations of N_2O at spatial scale (Allen et al. 2007; Hirota et al. 2007). Over all sampling seasons, we observed that N_2O fluxes from the four marshes were significantly different ($p < 0.05$), in the order of $HM > MF > LM > MM$ (Fig. 4). Also, a large spatial variation of N_2O fluxes in the coastal marsh of the Yellow River estuary was observed. The coefficient of variations (CVs) of N_2O fluxes in the four marshes were 98.47, 278.29, 164.56, and 138.12 %, respectively, while the value across the coastal marsh was 158.31 %, indicating that to assess the regional budget of N_2O emissions precisely, measurements should be designed at fine scales and the number of spatial replicates should be increased. Previous studies have indicated that temperatures had great influences on N_2O emissions at spatial scale (Alongi et al. 2005; Gregorich et al. 2006), but this study has drawn a different result. During all the seasons measured, air temperature and ground temperatures did not show significant difference among the four marshes ($p > 0.05$), most correlations between N_2O fluxes and temperatures in different marshes were not significant ($p > 0.05$) and only few significant positive or negative correlations were found in HM or MM (Table 1). This indicated that the function of thermal condition might be covered by the interactions of other biotic or abiotic factors (such as moisture, salinity, sediment substrate, and vegetation) though it was considered an important factor affecting N_2O emission. Although EC showed significant differences within the four marshes ($p < 0.05$), the correlations between EC and N_2O emission were not significant ($p > 0.05$) (Table 2). By comparison, soil moisture did not show significant differences among the four marshes ($p > 0.05$), but significant positive correlation between soil moisture (5–10 cm) and N_2O emission was found in LM ($p < 0.05$) (Table 2). Generally, both positive and negative impacts of soil moisture (or EC) on N_2O emissions were observed in coastal marshes (Table 2), which were different with mostly previous studies that N_2O emissions had negative correlation with moisture (Regina et al. 1996; Wang et al. 2005) or EC (Law

et al. 1991; Dalal et al. 2003; Chen et al. 2010). One possible explanation for the positive correlations between EC and N_2O emissions was that the salinity in LM and MF was much lower than that in HM and MM (Fig. 1c), which might not completely inhibit the activities of nitrifiers and denitrifiers in soil (Lv et al. 2008). The positive correlations between soil moisture and N_2O emissions might be partly dependent on the fluctuation of soil moisture (or water level) by astronomic tide. As shown in Fig. 5, dissimilar variations of N_2O emissions and flooding depths in LM and MF were observed. Both LM and MF were found to release N_2O at 0700 and 0930 hours sampling (before flood), indicating that the proper soil moisture might contribute to a favorable aerobic–anaerobic status for N_2O production. As the flood began at 1200 hours sampling, the N_2O flux in LM decreased and the value in MF became negative, indicating that the soil moisture in LM and MF might be greatly changed due to the different flooding depths, which produced different impacts on N_2O emission. When the flooding was deeper at 1430 hours sampling, both LM and MF showed great consumptions, indicating that the tidal inundation produced an unfavorable anaerobic status for N_2O production and the limited N_2O emission might be severely prevented by flooding seawater. Similar result was drawn by Zhang et al. (2013) who found that tidal inundation significantly decreased the N_2O emission in the coastal marsh of the Min River estuary. Although the flooding depth in LM decreased and that in MF increased greatly at 1700 hours sampling, both LM and MF were found to release N_2O greatly, which was mainly dependent on the N_2O transportation from surface seawater to the two marshes by tidal fluctuation (Senga et al. 2001; Hirota et al. 2007). In addition, the decrease of flooding depth in LM might cause the dissolved N_2O in seawater to be released, which partly contributed to the significant N_2O emission. Similar result was drawn by Hirota et al. (2007) who found that in coastal ecosystems subjected to such short-term fluctuation of water level (or soil moisture) by astronomic tide, the

Fig. 5 Variations of N_2O flux and flooding depth in low marsh (LM) and mudflat (MF) in September 2010



spatial variations in N_2O flux was controlled by fluctuation of water level ($r=0.58$, $p<0.05$).

Site-level control of N_2O emission was also attributed to the effects of vegetation and nutrient status. In this study, the plant distributed continuously across the coastal marsh and the plant compositions in the four marshes were different. The coverage and maximum biomass of *S. salsa*–*P. australis* community (HM) were 1.19- and 1.90-folds and 1.60- and 3.57-folds of *S. salsa*–*T. chinensis* community (MM) and *S. salsa* community (LM), respectively (Mou 2010; Dong et al. 2010). Also, the presence of *P. australis*, *T. chinensis*, and *S. salsa* had great impacts on N_2O emission as mentioned previously. These indicated that the vegetations across the coastal marsh might play an important role in controlling the N_2O emissions at spatial scale. Although both TC and TN in soils showed significant differences among the four marshes ($p<0.05$), lacks of correlations between N_2O fluxes and TC (or TN) were observed ($p>0.05$) (Table 3). By comparison, although both NH_4^+ -N and NO_3^- -N had no significant differences within the four marshes ($p>0.05$), significant correlations between N_2O fluxes and NH_4^+ -N could be observed in subsurface soil of HM and MF ($p<0.05$) (Table 3). C and N were very important substrates for N_2O production (participated in nitrification and denitrification processes) (Tauchnitz et al. 2008) and they generally influenced N_2O emissions by C/N regulations and interactions with other abiotic variables (Blackwell et al. 2010). In this study, negative correlations between N_2O emissions and nutrient variables were generally observed in the four marshes (Table 3), which was different with mostly previous studies (Aelion et al. 1997; Muñoz-Hincapié et al. 2002; Chen et al. 2010). One possible reason was related to the interaction of vegetation and microorganism (nitrifiers and denitrifiers) during N_2O production (Li et al. 2002). N_2O production might be greatly inhibited as the available N was significantly competed by both vegetations and microorganisms in *S. salsa*–*P. australis* community, *S. salsa*–*T. chinensis* community, and *S. salsa* community, which partly contributed to the difference of N_2O emissions at spatial scale. Since there was no vegetation in MF, the negative correlations between N_2O emissions and nutrient variables were possibly correlated with the high soil moisture (Fig. 1b). Under high moisture condition, the NO_3^- -N in topsoil could be easily transferred to the deep soil layer, which decreased the chance to participate in nitrification and denitrification processes. As shown in Fig. 2d, the NO_3^- -N in topsoil of MF was very low, which could partly explain the negative influences on N_2O production and emission.

Comparisons with other measurements and potential of N loading on N_2O emissions

Previous studies that have examined the release of N_2O from different coastal marshes and mangrove swamps reported

about the fluxes in the range of -0.1298 to 0.1953 $mg\ N_2O\ m^{-2}\ h^{-1}$ (Alongi et al. 2005; Xie et al. 2011) (Table 4). The magnitudes of N_2O fluxes determined in this study (-0.0051 – 0.0805 $mg\ N_2O\ m^{-2}\ h^{-1}$) were in the range, which were higher than those from coastal marshes in the Yangtze River estuary (-0.0096 – 0.0079 $mg\ N_2O\ m^{-2}\ h^{-1}$) and the Min River estuary (0.0037 – 0.0157 $mg\ N_2O\ m^{-2}\ h^{-1}$), and mangrove swamps in the Moreton Bay (-0.002 – 0.014 $mg\ N_2O\ m^{-2}\ h^{-1}$), but matched emissions recorded at coastal tundra marshes in the eastern Antarctica (-0.0206 – 0.0856 $mg\ N_2O\ m^{-2}\ h^{-1}$), coastal marshes in the coastal lagoon of Lake Nakaumi (-0.01 – 0.06 $mg\ N_2O\ m^{-2}\ h^{-1}$) and mangrove swamps in the Brisbane River (-0.004 – 0.065 $mg\ N_2O\ m^{-2}\ h^{-1}$) and Magueyes Island (0.0022 – 0.0616 $mg\ N_2O\ m^{-2}\ h^{-1}$) (Table 4).

In this paper, we found that the coastal marsh acted as a N_2O source (cumulative N_2O emission throughout a year was 113.03 $mg\ N_2O\ m^{-2}$) in the present N loading of the Yellow River estuary. Numerous studies have demonstrated that exogenous N generally had great stimulatory effects on the production and emission of N_2O (Lee et al. 1997; Muñoz-Hincapié et al. 2002; Liikanen et al. 2003; Song et al. 2006; Zhang et al. 2007; Stadmark and Leonardson 2007; Li et al. 2009, 2010; Zhang et al. 2012, 2013), but the promoted magnitude of N_2O flux to N enrichment varied due to the N addition level (Song et al. 2006; Zhang et al. 2007; Li et al. 2009, 2010; Zhang et al. 2012; Mou et al. 2012) and N forms (NH_4^+ -N and NO_3^- -N) (Smith et al. 1983; Lindau and DeLaune 1991; Cartaxana and Lloyd 1999; Muñoz-Hincapié et al. 2002; Wan et al. 2009). Wang (2011) studied the responses of N enrichment (NH_4^+ -N) on the N_2O production of coastal marsh soil in the Yellow River estuary, and found that the additions of NH_4^+ -N had great stimulation on N_2O production, with approximately 1.93–3.71-folds of N_2O production being observed with increasing NH_4^+ -N addition. Denitrification was the most important process for N_2O production and its contribution to total N_2O production would also be elevated with increasing NH_4^+ -N addition (Wang 2011). The increase in N_2O emission under N addition was probably caused by the enhancement of both nitrifiers and denitrifiers activities (Wrage et al. 2004). At present, the exogenous N loading (NH_4^+ -N is dominated) of the Yellow River estuary is increasing due to human activities (State Oceanic Administration of China 2013). Since N is a very limited nutrient in the coastal marshes of the Yellow River estuary (Mou 2010), increases in exogenous N loading to estuarine and coastal marshes will stimulate microbial processes and N_2O emission. As shown in Table 4, the mean N_2O flux from Futian mangrove (0.7572 $mg\ N_2O\ m^{-2}\ h^{-1}$) and the maximum N_2O emission from Mai Po mangrove (0.4176 $mg\ N_2O\ m^{-2}\ h^{-1}$) in the Deep Bay region of South China recorded by Chen et al. (2010) were 9.41 and 5.19 times greater than the maximum N_2O emission reported by our study, and the reason

Table 4 Literature data of N₂O emissions from different marshes

Marsh types	Location	Vegetations	N ₂ O fluxes ^a (mg m ⁻² h ⁻¹)	Observation period	References
Coastal marsh	Yellow River estuary, China	<i>Phragmites australis</i> , <i>Suaeda salsa</i> , <i>Tamarix chinensis</i>	0.0117 (−0.0051–0.0805) ^b	September 2010–July 2011	This study
	Yangtze River estuary, China	<i>Scirpus mariqueter</i> Mudflat	0.0699 −0.0276	July–August 2004	Wang et al. (2007)
	Min River estuary, China	<i>P. australis</i> , <i>S. mariqueter</i> <i>Cyperus malaccensis</i> <i>Spartina alterniflora</i>	(−0.0096–0.0079) ^b (0.0195–0.0514) ^b 0.0108 (−0.0230–0.0466) ^b 0.0092 (0.0037–0.0157) ^b	April–November 2005 September–October 2011 September–October 2011 March 2012	Wang et al. (2010a) Zhang et al. (2012) Zhang et al. (2013)
	Dagu estuary (Jiaozhou Gulf), China	<i>P. australis</i>	(−0.1289–0.1511) ^b	September 2009–February 2010	Xie et al. (2011)
	Eastern Antarctica (coastal tundra marsh)	<i>Wolong</i>	0.0069 (−0.0206–0.0856) ^b	December 2005–February 2006	Zhu et al. (2008)
		Mesic tundra	0.0018 (−0.0053–0.0508) ^b		
		Dry tundra	0.0198 (0.0064–0.0271) ^b		
		Ponds	0.0041 (−0.0059–0.0126) ^b		
		Shallow fens	0.0105 (−0.0036–0.0121) ^b		
		Dry tundra	0.0248 (0.0128–0.0398) ^b		
	Lake Nakaumi (coastal lagoon), Japan	<i>Carex rugulosa</i> , <i>P. australis</i> , <i>Solidago altissima</i> Sand shore	0.02 (−0.01–0.06) ^b	August 2003	Hirota et al. (2007)
	Fildes Peninsula, Maritime Antarctica	<i>Adenocystis utricularis</i>	0.03 (0.02–0.05) ^b	January–March 2000	Sun et al. (2002)
Mangrove swamp	Jiulongjiang estuary, China	<i>Kandelia candel</i>	(0.0029–0.1953) ^b	July and September 2002	Alongi et al. (2005)
	Brisbane River, Queensland, Australia	<i>Avocennia marina</i> , <i>Aegiceras corniculatum</i>	(−0.004–0.065) ^b	April 2004; February and July 2005	Allen et al. (2007)
	Deep Bay region, South China	Futian <i>Kandelia obovata</i> , <i>Acanthus ilicifolius</i> , <i>Bruguiera gymnorhiza</i>	0.7572	July and August 2000	Chen et al. (2010)
	Mai Po		(0.1509–0.4176) ^b		
	Magueyes Island, Puerto Rico	<i>Rhizophora mangle</i>	0.022 (0.0022–0.0616) ^b	2000	Bauza et al. (2002)
	Moreton Bay, Queensland, Australia	<i>A. marina</i>	(−0.002–0.014) ^b	July and August 1998; September and October 1999	Kreuzwieser et al. (2003)

^a Means in different observation periods^b Values in bracket are the range of N₂O fluxes

was probably dependent on the higher nutrient loadings of the Deep Bay region compared to the Yellow River estuary. According to the Ocean Environmental Quality Communiqué of China in 2012, approximately 4.22×10^4 tons of nutrients and 4.39×10^5 tons of OM were discharged into Bohai Sea by Yellow River, while approximately 6.42×10^5 tons of nutrients and 4.65×10^5 tons of OM were imported into Deep Bay region by Pearl River (State Oceanic Administration of China 2013). Because the Futian and Mai Po mangroves were located in inner Deep Bay receiving discharges from the Pearl River Delta and nearby polluted rivers in Shenzhen and Hong Kong (Ong Che 1999), significantly higher fluxes of N_2O were mainly related to the high nutrient inputs from the polluted rivers that flooded into Deep Bay, such as Pearl River (Chen et al. 2010).

Based on the above analysis, we concluded that the N_2O emission in the future will be enhanced with increasing N loading to the Yellow River estuary (especially NH_4^+-N is the major pollutant) and denitrification will play a very important role in contributing the total N_2O emission. With increasing N loading, the magnitude of N_2O emission in the Yellow River estuary should be paid more attention as the annual or local N_2O inventory was assessed accurately.

Acknowledgments The authors would like to acknowledge the two anonymous reviewers for their constructive comments on this paper. This study was financially supported by the Strategy Guidance Program of the Chinese Academy of Sciences (no. XD05030404), the “1-3-5” Strategy Plan Program of the Yantai Institute of Coastal Zone Research of the Chinese Academy of Sciences (no. Y254021031), the National Nature Science Foundation of China (no. 41171424), the Key Program of Natural Science Foundation of Shandong Province (no. ZR2010DZ001), the Talents Program of the Youth Innovation Promotion Association, Chinese Academy of Sciences (no. Y129091041), and the Ocean Public Welfare Scientific Research Project, State Oceanic Administration, People's Republic of China (no. 2012418008-3).

Open Access This article is distributed under the terms of the Creative Commons Attribution License which permits any use, distribution, and reproduction in any medium, provided the original author(s) and the source are credited.

References

Aelion CM, Shaw JN, Wahl M (1997) Impact of suburbanization on ground water quality and denitrification in coastal aquifer sediments. *J Exp Mar Biol Ecol* 213:31–51
 Allen DE, Dalal RC, Rennenberg H, Meyer RL, Reeves S, Schmidt S (2007) Spatial and temporal variation of nitrous oxide and methane flux between subtropical mangrove sediments and the atmosphere. *Soil Biol Biochem* 39:622–631
 Alongi DM, Pfitzner J, Trott LA, Tirendi F, Dixon P, Klumpp DW (2005) Rapid sediment accumulation and microbial mineralization in forests of the mangrove *Kandelia candel* in the Jiulongjiang Estuary, China. *Estuar Coast Shelf S* 63:605–618
 Amouroux D, Roberts G, Rapsomanikis S, Andreae MO (2002) Biogenic gas (CH_4 , N_2O , DMS) emission to the atmosphere from

near-shore and shelf waters of the North-western Black Sea. *Estuar Coast Shelf S* 54(3):575–587
 Bauza JF, Morell JM, Corredor JE (2002) Biogeochemistry of nitrous oxide production in the red mangrove (*Rhizophora mangle*) forest sediments. *Estuar Coast Shelf S* 55:697–704
 Blackwell MSA, Yamulki S, Bol R (2010) Nitrous oxide production and denitrification rates in estuarine intertidal saltmarsh and managed realignment zones. *Estuar Coast Shelf S* 87:591–600
 Cartaxana P, Lloyd D (1999) N_2 , N_2O and O_2 profiles in a tagus estuary salt marsh. *Estuar Coast Shelf S* 48(6):751–756
 Chapuis-Lardy L, Wrage N, Metay A, Chotte JL, Bernoux M (2007) Soils, a sink for N_2O ? A review. *Global Change Biol* 13:1–177
 Chen GC, Tam NFY, Ye Y (2010) Summer fluxes of atmospheric greenhouse gases N_2O , CH_4 and CO_2 from mangrove soil in South China. *Sci Total Environ* 408:2761–2767
 Cheng WX (2009) Rhizosphere priming effect: its functional relationships with microbial turnover, evapotranspiration, and C-N budgets. *Soil Biol Biochem* 41:1795–1801
 Conrad R (1996) Soil microorganisms as controllers of atmospheric trace gases (H_2 , CO , CH_4 , OCS , N_2O , and NO). *Microbiol Rev* 60:609–640
 Crutzen PJ, Ehhalt DH (1977) Effects of nitrogen fertilizers and combustion on the stratospheric ozone layer. *Ambio* 6:112–117
 Cui BS, Yang QC, Yang ZF, Zhang KJ (2009) Evaluating the ecological performance of wetland restoration in the Yellow River Delta, China. *Ecol Eng* 35:1090–1103
 Dalal RC, Wang WJ, Robertson GP, Parton WJ (2003) Nitrous oxide emission from Australian agricultural lands and mitigation options: a review. *Aust J Soil Res* 41:165–195
 Dong HF, Yu JB, Sun ZG, Mou XJ, Chen XB, Mao PL, Wu CF, Guan B (2010) Spatial distribution characteristics of organic carbon in the soil-plant systems in the Yellow River estuary tidal flat wetland. *Environ Sci* 31(6):1594–1599
 Ganguly D, Dey M, Mandal SK, De TK, Jana TK (2008) Energy dynamics and its implication to biosphere–atmosphere exchange of CO_2 , H_2O and CH_4 in a tropical mangrove forest canopy. *Atmos Environ* 42:4172–4184
 Ge LP, Zhang H (2011) Characteristics of soil enzymatic activities and relationship with the main nutrient in the rhizosphere of four littoral halophytes. *Ecol Environ Sci* 20(2):270–275
 Goodroad LL, Keeney DR (1984) Nitrous oxide emissions from soils during thawing. *Can J Soil Sci* 64:187–194
 Gregorich EG, Hopkins DW, Elberling B, Sparrow AD, Novis P, Greefield LG, Rochette P (2006) Emission of CO_2 , CH_4 and N_2O from lakeshore soils in an Antarctic dry valley. *Soil Biol Biochem* 38:3120–3129
 Han N, Shao Q, Lu CM, Wang BS (2005) The leaf tonoplast V-H⁺-ATPase activity of a C_3 halophyte *Suaeda salsa* is enhanced by salt stress in a Ca-dependent mode. *J Plant Physiol* 162:267–274
 Hao QJ, Wang YS, Song CC, Jiang CS (2007) Effects of marsh reclamation on methane and nitrous oxide emissions. *Acta Ecol Sin* 27(8):3417–3426
 Hirota M, Senga Y, Seike Y, Nohara S, Kunii H (2007) Fluxes of carbon dioxide, methane and nitrous oxide in two contrastive fringing zones of coastal lagoon, Lake Nakaumi, Japan. *Chemosphere* 68:597–603
 IPCC (2007) Changes in atmospheric constituents and in radioactive forcing. In: Climate change: the physical science basis. Contribution of Working Group I to the Fourth Assessment Report of the Intergovernmental Panel on Climate Change. Cambridge University Press, Cambridge
 Jarvis SC, Stockdale EA, Shepherd MA, Powlson DS (1996) Nitrogen mineralization in temperate agricultural soils: processes and measurement. *Adv Agron* 57:187–235
 Jiang CM, Yu GY, Fang HJ, Cao GM, Li YN (2010) Short-term effect of increasing nitrogen deposition on CO_2 , CH_4 and N_2O fluxes in an alpine meadow on the Qinghai-Tibetan Plateau, China. *Atmos Environ* 44:2920–2926

- Kong Y, Wang Z, Gu YJ, Wang YX (2008) Research progress on aerenchyma formation in plant roots. *Chin Bull Bot* 25(2):248–253
- Kreuzwieser J, Buchholz J, Rennenberg H (2003) Emission of methane and nitrous oxide by Australian mangrove ecosystems. *Plant Biol* 5:423–431
- Law CS, Rees AP, Owens NJP (1991) Temporal variability of denitrification in estuarine sediments. *Estuar Coast Shelf S* 33:37–56
- Lee RY, Joye SB, Roberts BJ, Valiela I (1997) Release of N₂ and N₂O from salt-marsh sediments subject to different land-derived nitrogen loads. *Biol Bull* 193(2):292–293
- Li J, Yu Q, Tong XJ (2002) Vegetation—an important source of atmospheric N₂O. *Earth Sci Front* 9(1):112
- Li YC, Song CC, Hou CC, Song YY (2010) Dynamics of N₂O emission and carbon mineralization to exogenous nitrogen input in meadow marsh soil. *J Soil Water Conserv* 24(4):140–147
- Li YC, Song CC, Liu DY, Wang L (2009) Denitrification loss and N₂O emissions from different nitrogen inputs in meadow marsh soil. *Res Environ Sci* 22(9):1103–1107
- Li YF, Huang YL, Li SK (1991) A preliminary analysis on the coastal physiognomy and deposition of the modern Yellow River Delta. *Acta Oceanol Sin* 13(5):662–671
- Liikanen A, Ratilainen E, Saarnio S, Alm J, Martikainen PJ, Silvola J (2003) Greenhouse gas dynamics in boreal, littoral sediments under raised CO₂ and nitrogen supply. *Freshwater Biol* 48(3):500–511
- Lindau CW, DeLaune RD (1991) Dinitrogen and nitrous oxide emission and entrapment in *Spartina alterniflora* saltmarsh soils following addition of N-15 labelled ammonium and nitrate. *Estuar Coast Shelf S* 32(2):161–172
- Ling Y, Ding H, Xu YT (2008) Effects of reed roots on rhizosphere microbes in constructed wetland. *Syst Sci Compr Stud Agr* 24(2):214–216
- Ludwig B, Teepe R, Lopes de Gerenyu V, Flessa H (2006) CO₂ and N₂O emissions from gleyic soils in the Russian tundra and a German forest during freeze-thaw periods—a microcosm study. *Soil Biol Biochem* 38:3516–3519
- Lv YH, Bai H, Jiang Y, Yu JH (2008) Study of nitrification activity and impact factors of wetland in Yellow River Delta. *Transaction of Oceanol Limno* 2:61–66
- Magalhães C, Costa J, Teixeira C, Bordalo AA (2007) Impact of trace metals on denitrification in estuarine sediments of the Douro River estuary, Portugal. *Mar Chem* 107:332–341
- Moseman-Valtierra S, Gonzalez R, Kroeger KD, Tang JW, Chao WC, Crusius J, Bratton J, Green A, Shelton J (2011) Short-term nitrogen additions can shift a coastal wetland from a sink to a source of N₂O. *Atmos Environ* 45:4390–4397
- Mosier AR (1998) Soil processes and global change. *Biol Fert Soils* 27:221–229
- Mou XJ (2010) Study on the nitrogen biological cycling characteristics and cycling model of tidal wetland ecosystem in Yellow River estuary. Masters Degree Dissertation, Yantai Institute of Coastal Zone Research, Chinese Academy of Sciences, Yantai
- Mou XJ, Liu XT, Tong C, Sun ZG (2012) Short-term effects of exogenous nitrogen on CH₄ and N₂O effluxes from *Cyperus malaccensis* marsh in the Min River estuary. *Environ Sci* 33(7):2482–2489
- Mou XJ, Sun ZG, Wang LL, Dong HF (2010) Characteristics of nitrogen accumulation and allocation of *Suaeda salsa* in different growth conditions of intertidal zone in Yellow River estuary. *Wetland Sci* 8(1):57–66
- Muñoz-Hincapié M, Morell JM, Corredor JE (2002) Increase of nitrous oxide flux to the atmosphere upon nitrogen addition to red mangroves sediments. *Mar Pollut Bull* 44:992–996
- Ong Che RG (1999) Concentration of seven heavy metals in soils and mangrove root samples from Mai Po, Hong Kong. *Mar Pollut Bull* 39:269–79
- Priemé A, Christensen S (2001) Natural perturbations, drying-wetting and freezing-thawing cycles, and the emission of nitrous oxide, carbon dioxide and methane from farmed organic soils. *Soil Biol Biochem* 33:2083–2091
- Purvaja R, Ramesh R (2001) Natural and anthropogenic methane emission from coastal wetlands of South India. *Environ Manage* 27:547–557
- Regina K, Nykänen H, Silvola J, Martikainen PJ (1996) Fluxes of nitrous oxide from boreal peatlands as affected by peatland type, water table level and nitrification capacity. *Biogeochemistry* 35:401–418
- Seitzinger SP, Kroeze C (1998) Global distribution of nitrous oxide production and N inputs in freshwater and coastal marine ecosystems. *Global Biogeochem Cy* 12:93–113
- Senga Y, Seike Y, Mchida K, Fujianaga K, Okumura M (2001) Nitrous oxide in Lake Shinji and Nakaumi, Japan. *Limnology* 2:129–136
- Shingo U, Chun-sim UG, Takahito Y (2000) Dynamics of dissolved O₂, CO₂, CH₄ and N₂O in a tropical coastal swamp in southern Thailand. *Biogeochemistry* 49:191–215
- Smith CJ, DeLaune RD, Patrick WH Jr (1983) Nitrous oxide emission from Gulf Coast wetlands. *Geochim Cosmochim Acta* 47(10):1805–1814
- Song CC, Zhang JB, Wang YY, Wang YS, Zhao ZC (2008) Emission of CO₂, CH₄ and N₂O from freshwater marsh in Northeast of China. *J Environ Manage* 88:428–436
- Song CC, Zhang LH, Wang YY, Zhao ZC (2006) Annual dynamics of CO₂, CH₄, N₂O emissions from freshwater marshes and affected by nitrogen fertilization. *Environ Sci* 27(12):2369–2375
- Søvik AK, Kløve B (2007) Emission of N₂O and CH₄ from a constructed wetland in southeastern Norway. *Sci Total Environ* 380:28–37
- Stadmark J, Leonardson L (2007) Greenhouse gas production in a pond sediment: Effects of temperature, nitrate, acetate and season. *Sci Total Environ* 387(1–3):194–205
- State Oceanic Administration of China (2013) Ocean Environmental Quality Communique of China in 2012. (http://www.coi.gov.cn/gongbao/nrhuanjing/nr2012/201304/t20130401_26413.html). Accessed 10 February 2013
- Sun LG, Zhu RB, Xie ZQ, Xing GX (2002) Emissions of nitrous oxide and methane from Antarctic Tundra: role of penguin dropping deposition. *Atmos Environ* 36:4977–4982
- Sun ZG, Liu JS, Yang JS, Mou XJ, Wang LL (2009) N₂O flux characteristics and emission contributions of *Calamagrostis angustifolia* wetland during growth and non-growth seasons. *Acta Pratacul Sin* 18(6):241–247
- Tauchnitz N, Brumme R, Bernsdorf S, Meissner R (2008) Nitrous oxide and methane fluxes of a pristine slope mire in the German National Park Harz Mountains. *Plant Soil* 303:131–138
- Teepe R, Brumme R, Beese F (2001) Nitrous oxide emissions from soil during freezing and thawing periods. *Soil Biol Biochem* 33:1269–1275
- Teiter S, Mander Ü (2005) Emission of N₂O, N₂, CH₄, and CO₂ from constructed wetlands from wastewater treatment and from riparian buffer zones. *Ecol Eng* 25:528–542
- Tian JY, Wang XF, Cai XJ (2005) Protection and restoration technique of wetland ecosystem in Yellow River Delta. China Ocean University Press, Qingdao
- van Bochove E, Prévost D, Pelletier F (2000) Effects of freeze-thaw and soil structure on nitrous oxide produced in a clay soil. *Soil Sci Soc Am J* 64:1638–1643
- Wan XH, Kuang SF, Zhou HD (2009) Research of exogenous nitrogen input on N₂O fluxes in constructed wetland. *J China Inst Water Resour Hydropower Res* 7(4):264–269
- Wang DQ, Chen ZL, Wang J, Xu SY, Yang HX, Chen H, Yang LY, Hu LZ (2007a) Summer-time denitrification and nitrous oxide exchange in the intertidal zone of the Yangtze Estuary. *Estuar Coast Shelf S* 73:43–53
- Wang DQ, Chen ZL, Wang J, Xu SY, Yang HX, Chen H, Yang YL (2007b) Fluxes of CH₄, CO₂ and N₂O fluxes from Yangtze estuary intertidal flat in summer season. *Geochimica* 36(1):78–88

- Wang DQ, Chen ZL, Wang J, Xu SY, Yang HX, Chen H, Yang LY, Hu LZ (2006) Denitrification, nitrous oxide emission and adsorption in intertidal flat, Yangtze estuary, in summer. *Geochimica* 35(3):271–279
- Wang LF, Cai ZC, Yang LF, Meng L (2005) Effect of disturbance and glucose addition on nitrous oxide and carbon dioxide emissions from a paddy soil. *Soil Till Res* 82:185–194
- Wang LL (2011) Study on the nitrous oxide emission rule and influence mechanism of tidal wetland ecosystem in the Yellow River estuary. Masters Degree Dissertation, Yantai Institute of Coastal Zone Research, Chinese Academy of Sciences, Yantai
- Wang Q, Liu M, Hou LJ, Cheng SB (2010a) Characteristics and influencing factors of CO₂, CH₄ and N₂O emissions from Chongming eastern tidal flat wetland. *Geogr Res* 29(5):935–946
- Wang ZY, Zhao FF, Zhang BG, Zhang L, Li FM, Gao DM, Luo XX (2010b) Rhizosphere effect of three halophytes in the Yellow River Delta on nitrogen and phosphorus. *Environ Sci Technol* 33(10):33–38
- Whalen SC (2005) Biogeochemistry of methane exchange between natural wetlands and the atmosphere. *Environ Eng Sci* 22:73–94
- World Meteorological Organization (2011) WMO Greenhouse Gas Bulletin No.7 (21 November 2011). http://www.wmo.int/pages/prog/arep/gaw/ghg/documents/GHGbulletin_7_en.pdf. Accessed 15 January 2013
- Wrage N, Velthof GL, Laanbroek HJ, Oenema O (2004) Nitrous oxide production in grassland soils: assessing the contribution of nitrifier denitrification. *Soil Biol Biochem* 36(2):229–236
- Xie WX, Zhao QS, Zhang F, Ma XF (2011) Characteristics of N₂O flux in estuary wetland of Jiaozhou Bay in autumn and winter. *Sci Geogra Sin* 31(4):464–469
- Xu XG, Guo HH, Chen XL, Lin HP, Du QL (2002) A multi-scale study on land use and land cover quality change: the case of the Yellow River Delta in China. *GeoJournal* 56:177–183
- Yang HX, Wang DQ, Chen ZL, Xu SY (2006) Elementary research on green-house gas emissions in Chongming east intertidal flat of the Changjiang estuary. *Mar Environ Sci* 25:20–23
- Yang P, Tong C, He QH, Huang JF (2012) Diurnal variations of greenhouse gas fluxes at the water-air interface of aquaculture ponds in the Min River estuary. *Environ Sci* 33(12):4194–4204
- Zhang JB, Song CC, Yang WY (2005) Cold season CH₄, CO₂ and N₂O fluxes from freshwater marshes in northeast China. *Chemosphere* 59(11):1703–1705
- Zhang LH, Song CC, Wang DX, Wang YY (2007) Effects of exogenous nitrogen on freshwater marsh plant growth and N₂O fluxes in Sanjiang Plain, Northeast China. *Atmos Environ* 41(5):1080–1090
- Zhang YX, Zeng CS, Huang JF, Wang WQ, Tong C (2013) Effects of human-caused disturbance on nitrous oxide flux from *Cyperus malaccensis* marsh in the Minjiang River estuary. *China Environ Sci* 33(1):138–146
- Zhang YX, Zeng CS, Tong C, Wang WQ, Huang JF, He QH (2012) Tidal action and tread affecting nitrous oxide fluxes in intertidal *Cyperus malaccensis* var. *brevifolius* marsh. *Ecol Environ Sci* 21(4):641–646
- Zhu RB, Liu YS, Ma J, Xu H, Sun LG (2008) Nitrous oxide flux to the atmosphere from two coastal tundra wetlands in eastern Antarctica. *Atmos Environ* 42:2437–2447